

# V&V Reference Report

## L2 ASCDS Version : 8.5.1

Observation 5627 - L2 Version 3  
Chandra X-Ray Center

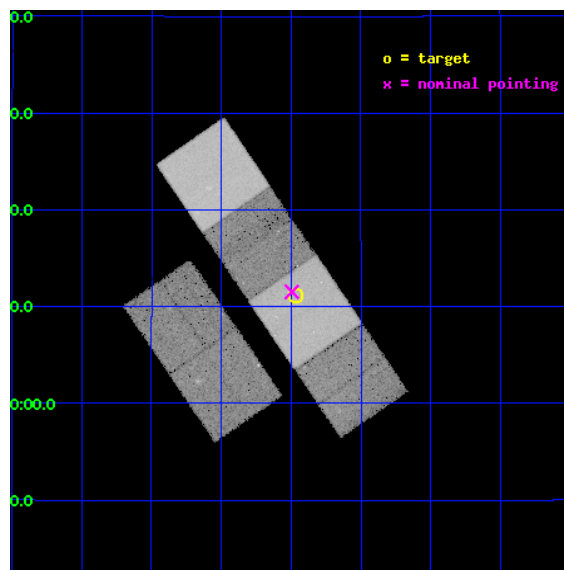
L2 Processing Date : Dec 16 2012

## Contents

<b>1</b>	<b>Front</b>	<b>2</b>
<b>2</b>	<b>OBI</b>	<b>3</b>
2.1	OBI . . . . .	3
2.1.1	Images . . . . .	3
2.1.2	Bias . . . . .	3
2.1.3	Parameters . . . . .	4
2.1.4	Events . . . . .	4
2.2	Compared Parameters . . . . .	5
2.3	Aspect . . . . .	6
2.4	Star Slots . . . . .	9
2.4.1	Slot 3 . . . . .	9
2.4.2	Slot 4 . . . . .	10
2.4.3	Slot 5 . . . . .	11
2.4.4	Slot 6 . . . . .	12
2.4.5	Slot 7 . . . . .	13
2.5	FID Slots . . . . .	14
2.5.1	Slot 0 . . . . .	14
2.5.2	Slot 1 . . . . .	15
2.5.3	Slot 2 . . . . .	16
<b>A</b>	<b>Summary</b>	<b>17</b>
A.1	Status . . . . .	17
A.2	Comments . . . . .	17

# 1 Front

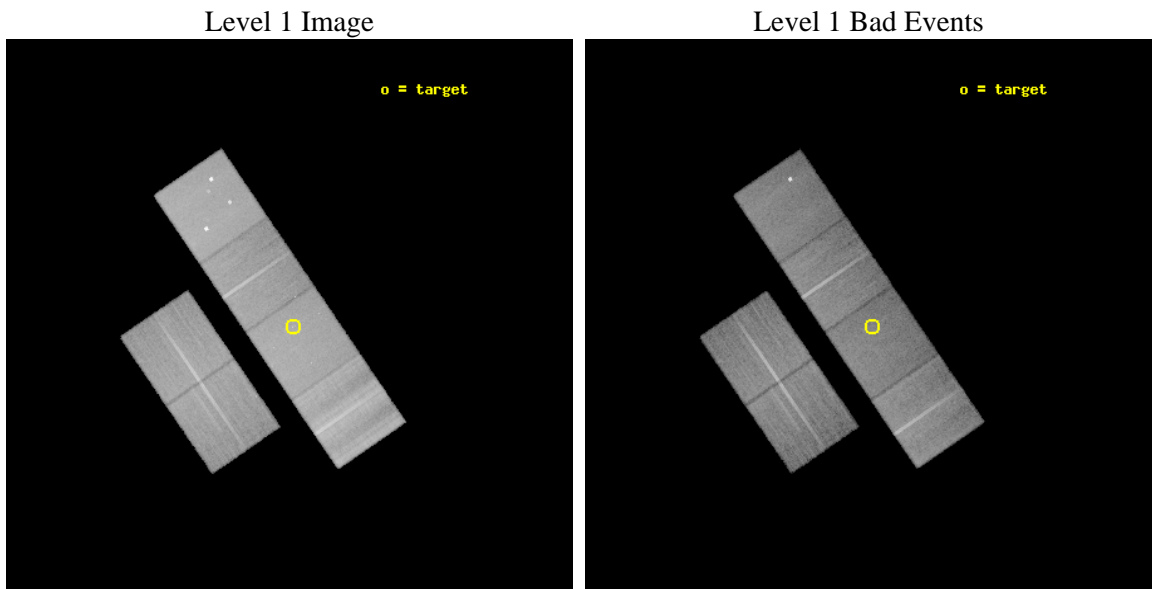
seq_num	701050	Sequence number
obs_id	5627	Observation id
title	The Jet-Like X-ray Structure at the High Redshift Quasar J0841+1311	&#160
observer	Dr. Daniel Schwartz	Principal investigator
object	CXOMP J084128.3+131107	Source name
dtcycle	0	&#160
cycle	P	events from which exps? Prim/Second/Both
ra_targ	130.366667	Observer's specified target RA [deg]
dec_targ	13.185278	Observer's specified target Dec [deg]
ra_nom	130.3736288691	Nominal RA [deg]
dec_nom	13.192206429521	Nominal Dec [deg]
roll_nom	55.68660263276	Nominal Roll [deg]
revision	3	Processing version of data
ontime	27180.799898744	Sum of GTIs [s]
livetime	26836.620244113	Livetime [s]
ontime2	27180.799898744	Sum of GTIs [s]
ontime3	27180.799898744	Sum of GTIs [s]
ontime5	27180.799898744	Sum of GTIs [s]
ontime6	27180.799898744	Sum of GTIs [s]
ontime7	27180.799898744	Sum of GTIs [s]
ontime8	27180.799898744	Sum of GTIs [s]
l2events	339148	Number of level 2 events



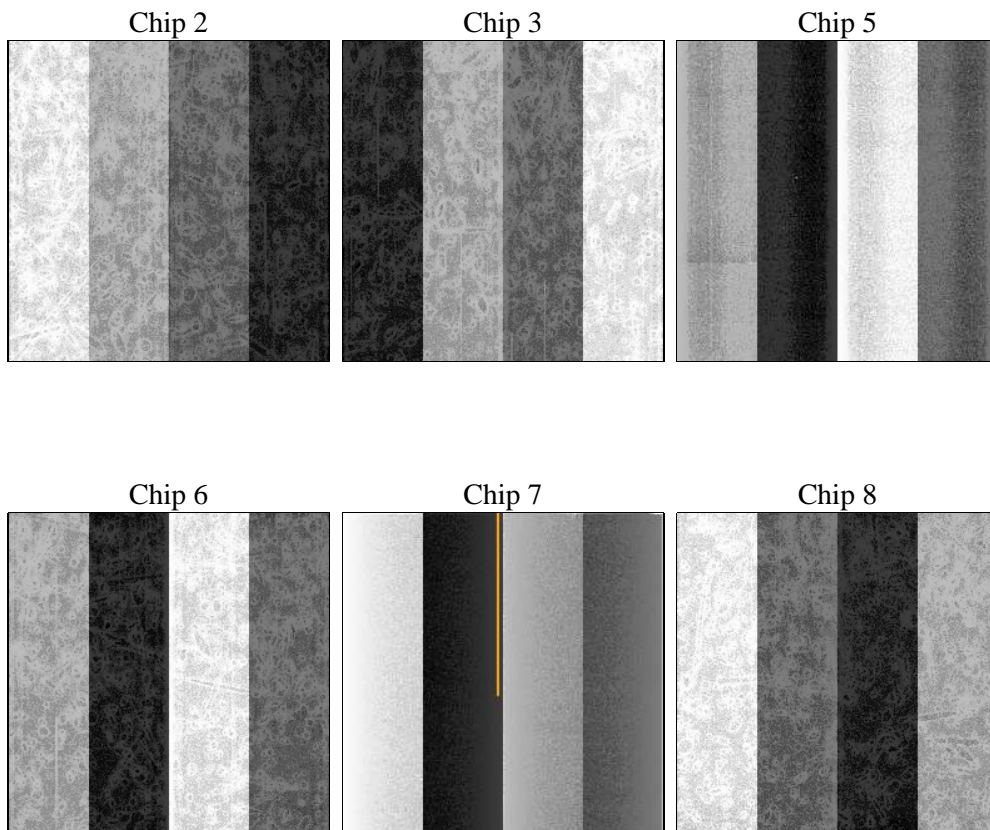
## 2 OBI

### 2.1 OBI

#### 2.1.1 Images



#### 2.1.2 Bias



### 2.1.3 Parameters

obi_num	1	Obi number	sched_exp_time	27000.000000	[s] Scheduled observation exposure time
ascdsver	8.5.1	Processing system revision	ontime	27180.799898744	Sum of GTIs [s]
caldbver	4.5.5	&#160	ontime2	27180.799898744	Sum of GTIs [s]
date	2012-12-16T10:56:10	Date and time of file creation	ontime3	27180.799898744	Sum of GTIs [s]
revision	3	Processing version of data	ontime5	27180.799898744	Sum of GTIs [s]
			ontime6	27180.799898744	Sum of GTIs [s]
			ontime7	27180.799898744	Sum of GTIs [s]
			ontime8	27180.799898744	Sum of GTIs [s]
			l1events	1674286	Number of level 1 events

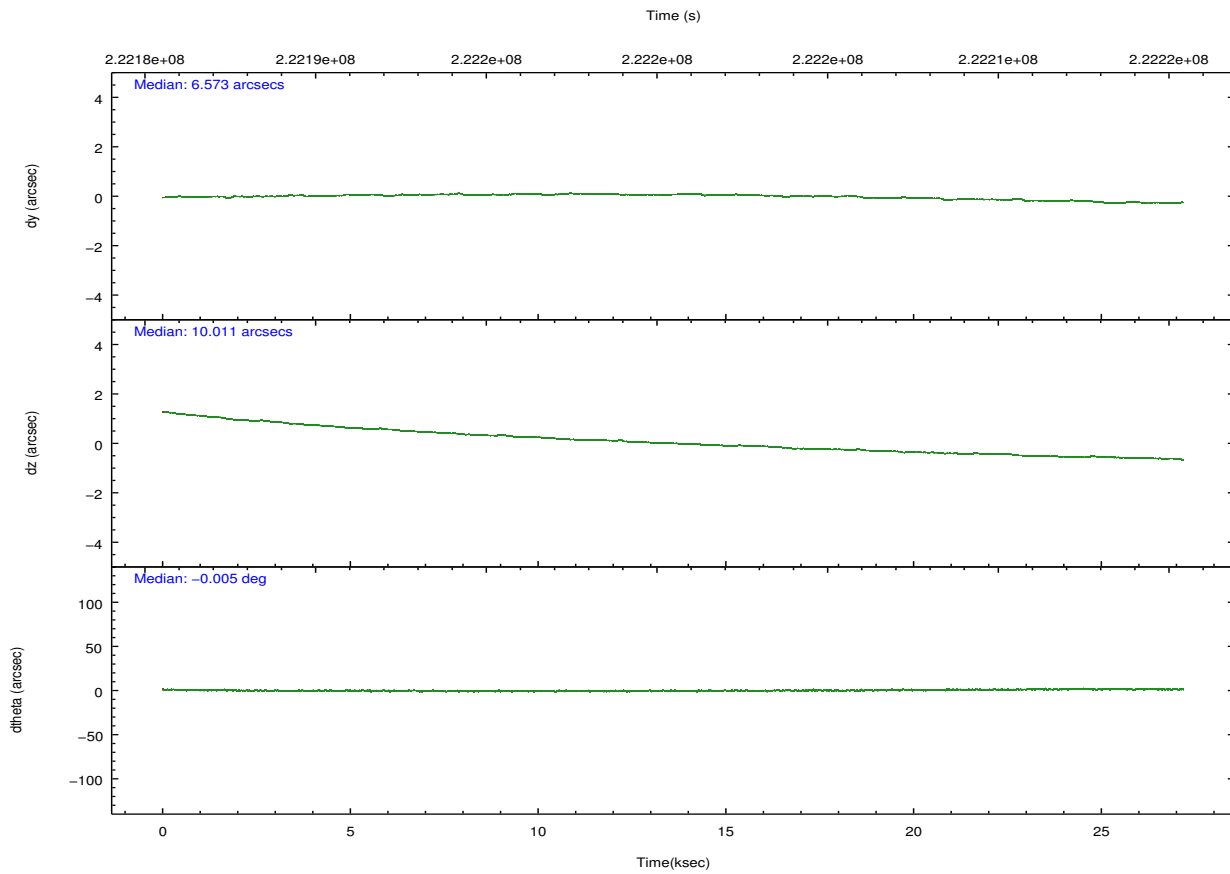
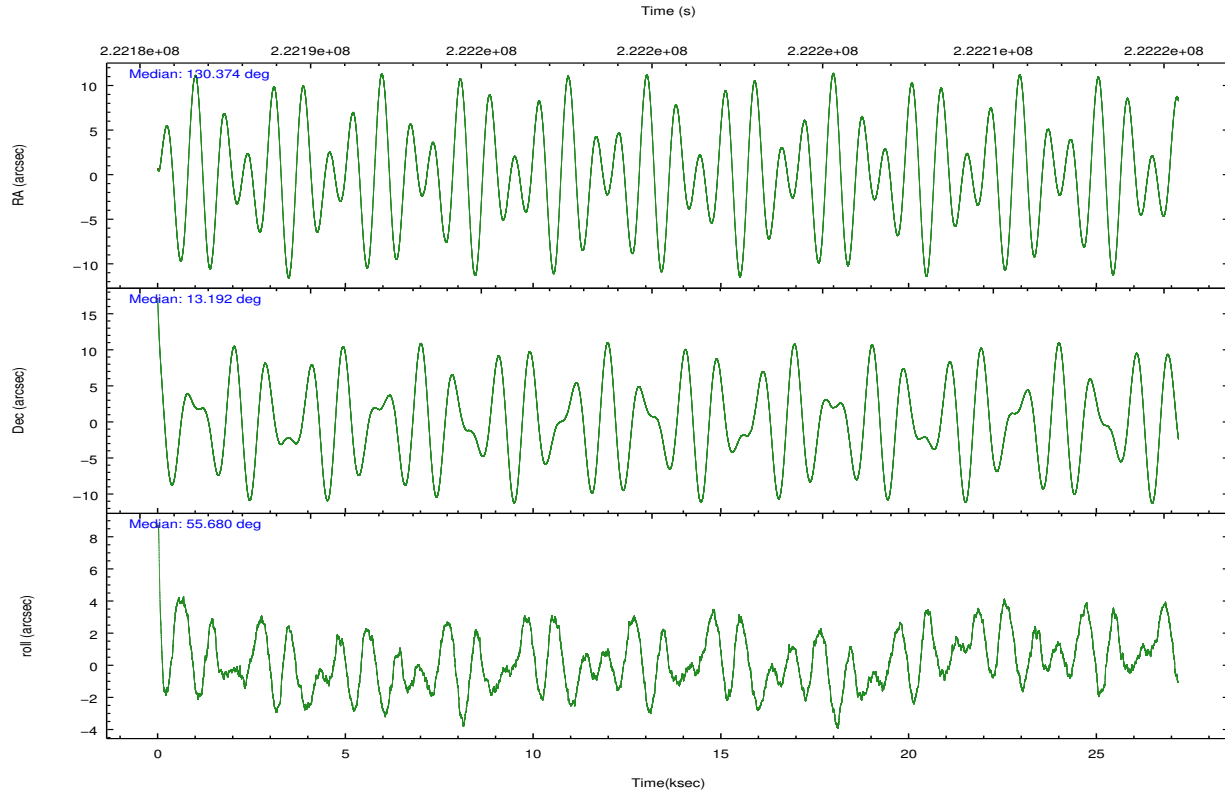
### 2.1.4 Events

	ccd 2	ccd 3	ccd 5	ccd 6	ccd 7	ccd 8		ccd 2	ccd 3	ccd 5	ccd 6	ccd 7	ccd 8
level 1 events	238361	220588	336214	232519	289825	356779	grade 0 events	13247	11728	21787	11268	10839	39894
rejected events	209957	194357	185935	205314	174741	233679		5%	5%	6%	4%	3%	11%
rejected %	88%	88%	55%	88%	60%	65%	grade 1 events	165	160	505	125	325	364
								0%	0%	0%	0%	0%	0%
							grade 2 events	6526	5551	46587	6379	24378	21116
								2%	2%	13%	2%	8%	5%
							grade 3 events	2343	2572	6399	2490	10592	19976
								0%	1%	1%	1%	3%	5%
							grade 4 events	2640	2421	5930	2540	10553	17707
								1%	1%	1%	1%	3%	4%
							grade 5 events	8443	9195	24706	9705	27634	13621
								3%	4%	7%	4%	9%	3%
							grade 6 events	4837	5041	76372	5668	63826	28574
								2%	2%	22%	2%	22%	8%
							grade 7 events	200160	183920	153928	194344	141678	215527
								83%	83%	45%	83%	48%	60%

## 2.2 Compared Parameters

Parameter	Planned	Actual	Parameter	Planned	Actual
Instrument	ACIS	ACIS	Obspar format version number	7	7
Detector	ACIS-235678	ACIS-235678	Obspar file type	PREDICTED	ACTUAL
Grating	NONE	NONE	Obspar update status	NONE	UPDATED
Data mode	VFAINT	VFAINT	Number of optional ACIS chips dropped	0	0
Observation mode	POINTING	POINTING	On-chip summing requested	N	N
[deg] Pointing RA	130.371898	130.3736288690962	Subarray requested	NONE	NONE
[deg] Pointing Dec	13.165006	13.19220642952085	Alternating exposures requested	N	N
[deg] Pointing Roll	55.530363	55.68660263276048	[s] Primary exposure time	0.000000	3.2
[mm] SIM focus pos	-0.684267	-0.6828225247311905			
[mm] SIM defocus	0	0.001444936568705701			
[mm] SIM translation stage pos	-190.132523	-190.1400660498719			
[mm] SIM translation stage offset	0	0.00754346686406393			
[s] Observation start time (MET)	222187067.184000	222185395.38133			
Observation start date	2005-01-15T14:36:43	2005-01-15T14:09:55			
[s] Observation end time (MET)	222214067.184000	222215081.94517			
Observation end date	2005-01-15T22:06:43	2005-01-15T22:24:41			
Read mode	TIMED	TIMED			

## 2.3 Aspect

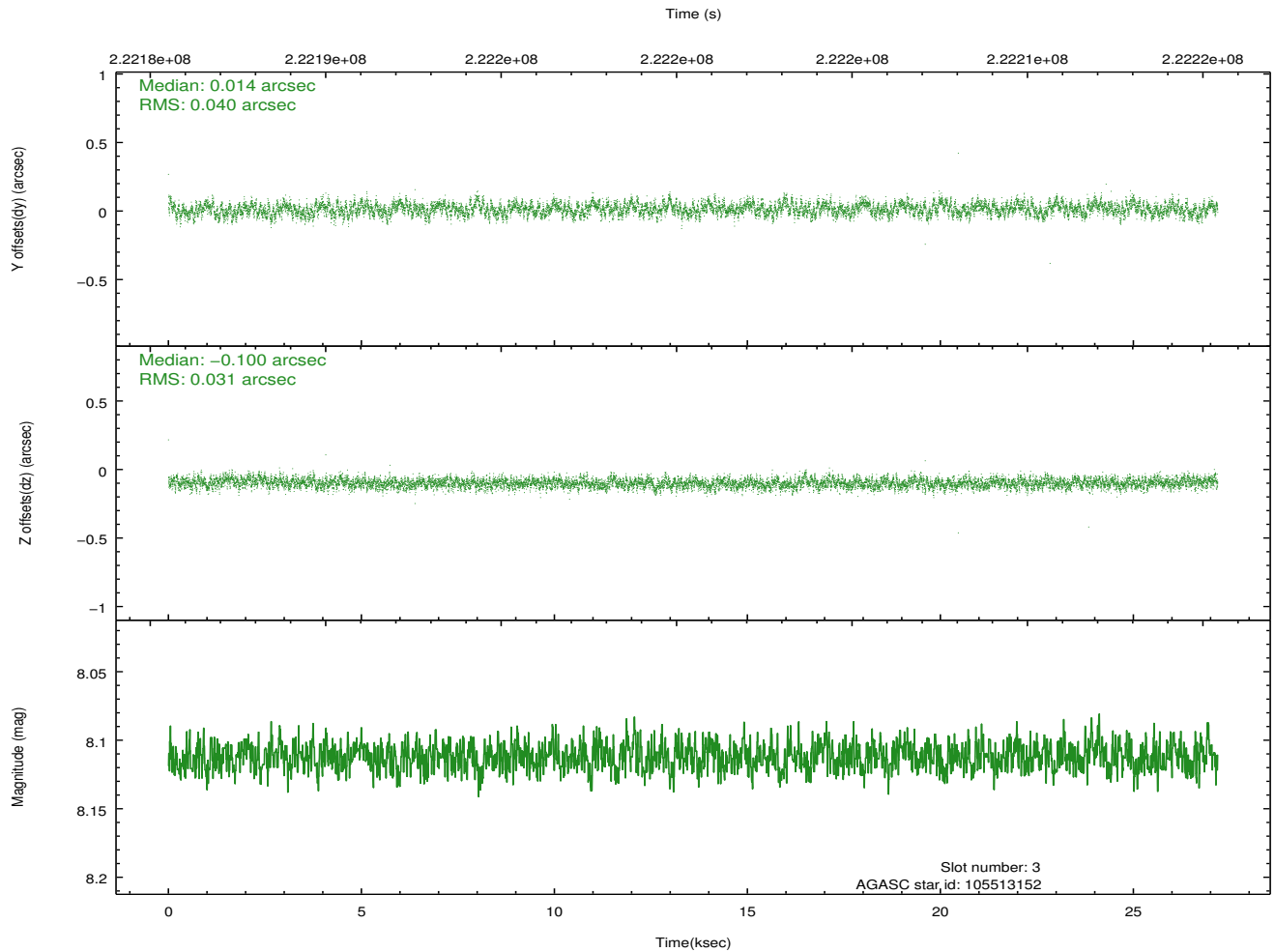
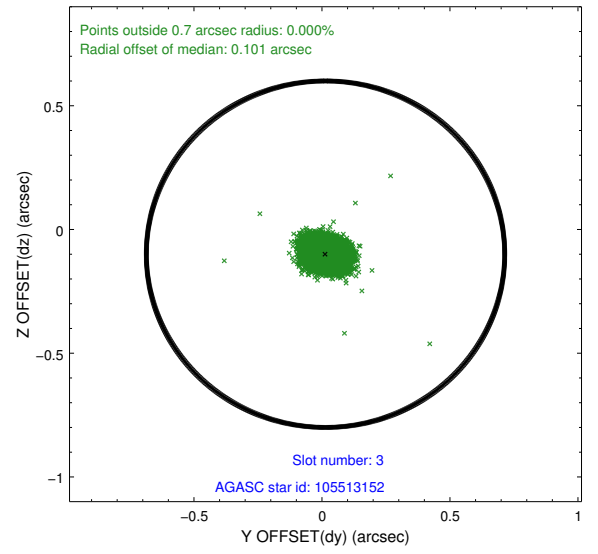
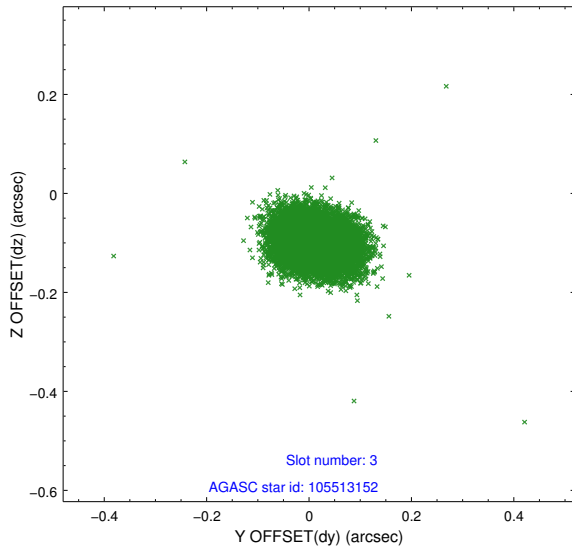


### Slot Statistics

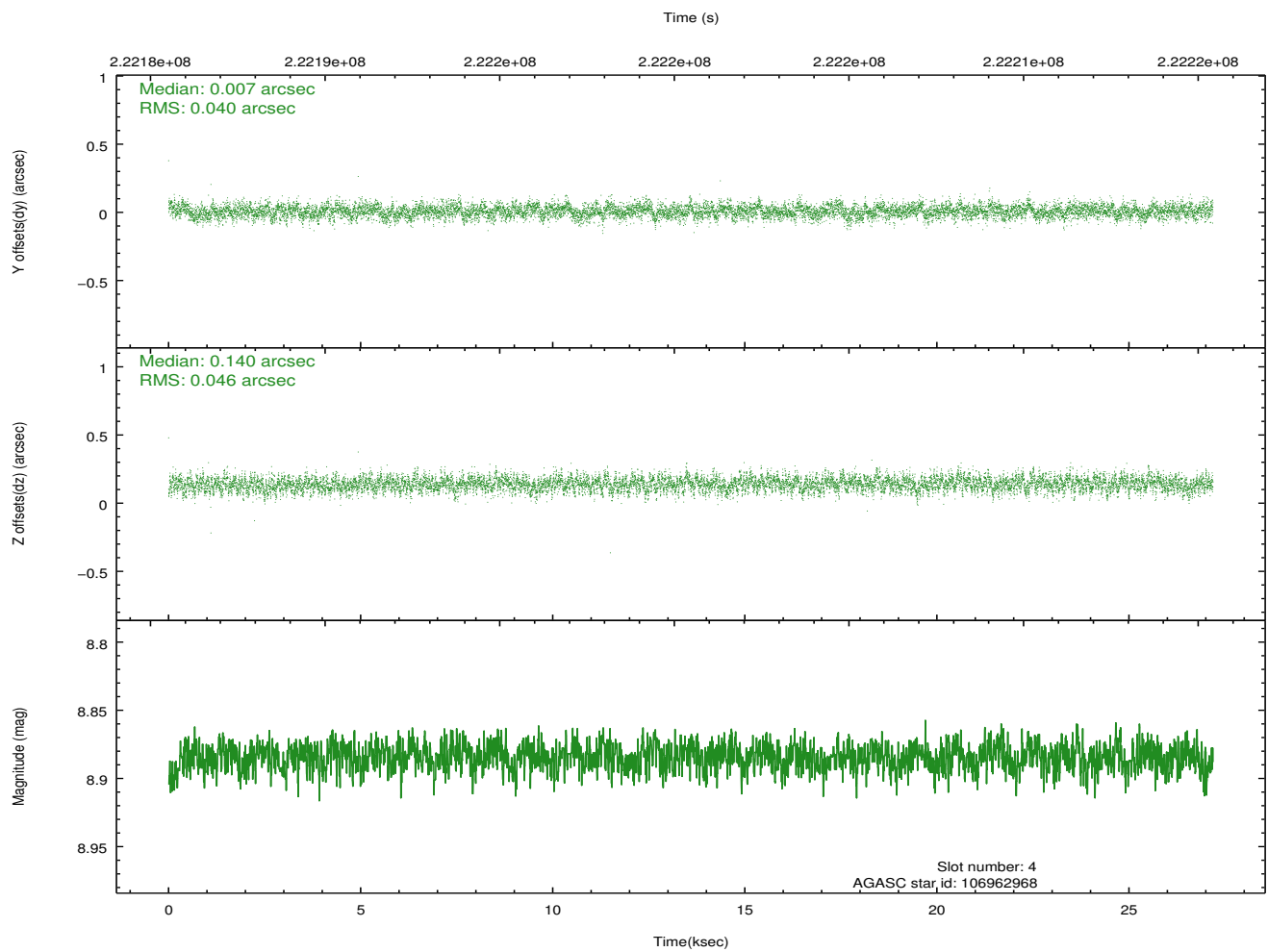
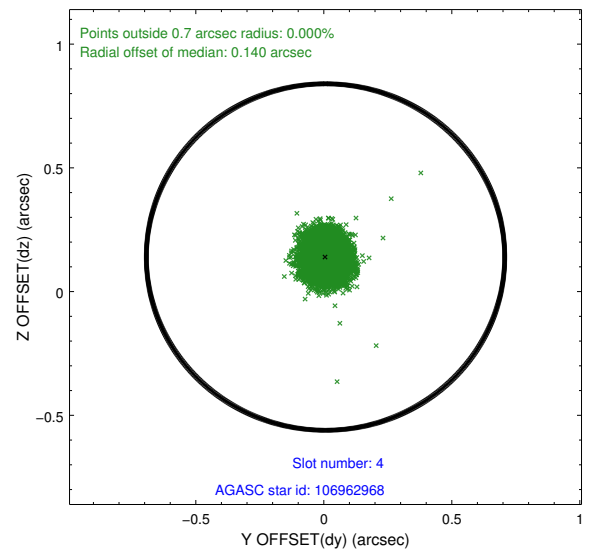
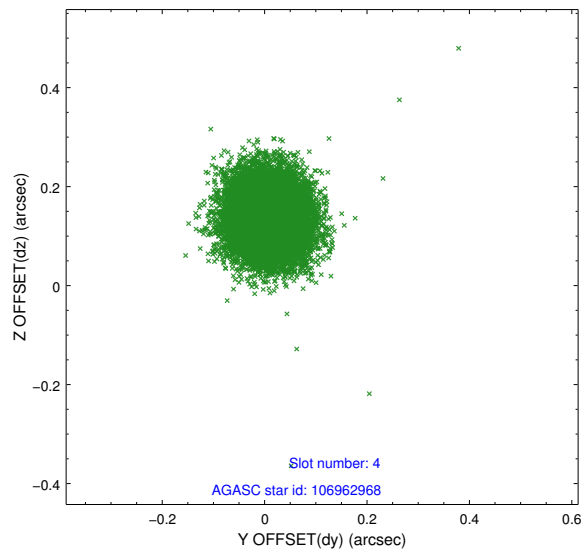
slot	status	id	mag	n_pts	med_dy	med_dz	dr1	dr2	ra	dec	mean_y	mean_z
0	FID	ACIS-S-2	7.10	6631	-0.059	-0.023	0.011	0.021	0.000000	0.000000	-759.31	-1731.38
1	FID	ACIS-S-4	7.21	6631	0.082	0.034	0.009	0.022	0.000000	0.000000	2154.03	177.11
2	FID	ACIS-S-5	7.23	6631	-0.055	-0.003	0.011	0.021	0.000000	0.000000	-1812.06	170.78
3	GUIDE	105513152	8.11	13258	0.014	-0.100	0.054	0.087	129.815846	12.960374	-1710.32	1192.66
4	GUIDE	106962968	8.88	13257	0.007	0.140	0.064	0.105	130.463087	13.055809	-142.91	-485.72
5	GUIDE	106964424	9.27	13232	0.036	0.068	0.086	0.139	130.578066	13.374693	1031.15	-167.55
6	GUIDE	106965360	8.74	13260	-0.013	0.105	0.088	0.140	130.587812	12.638213	-1133.50	-1698.36
7	GUIDE	106043672	9.03	13252	-0.039	-0.210	0.107	0.166	129.948191	13.729914	838.78	2373.32

## 2.4 Star Slots

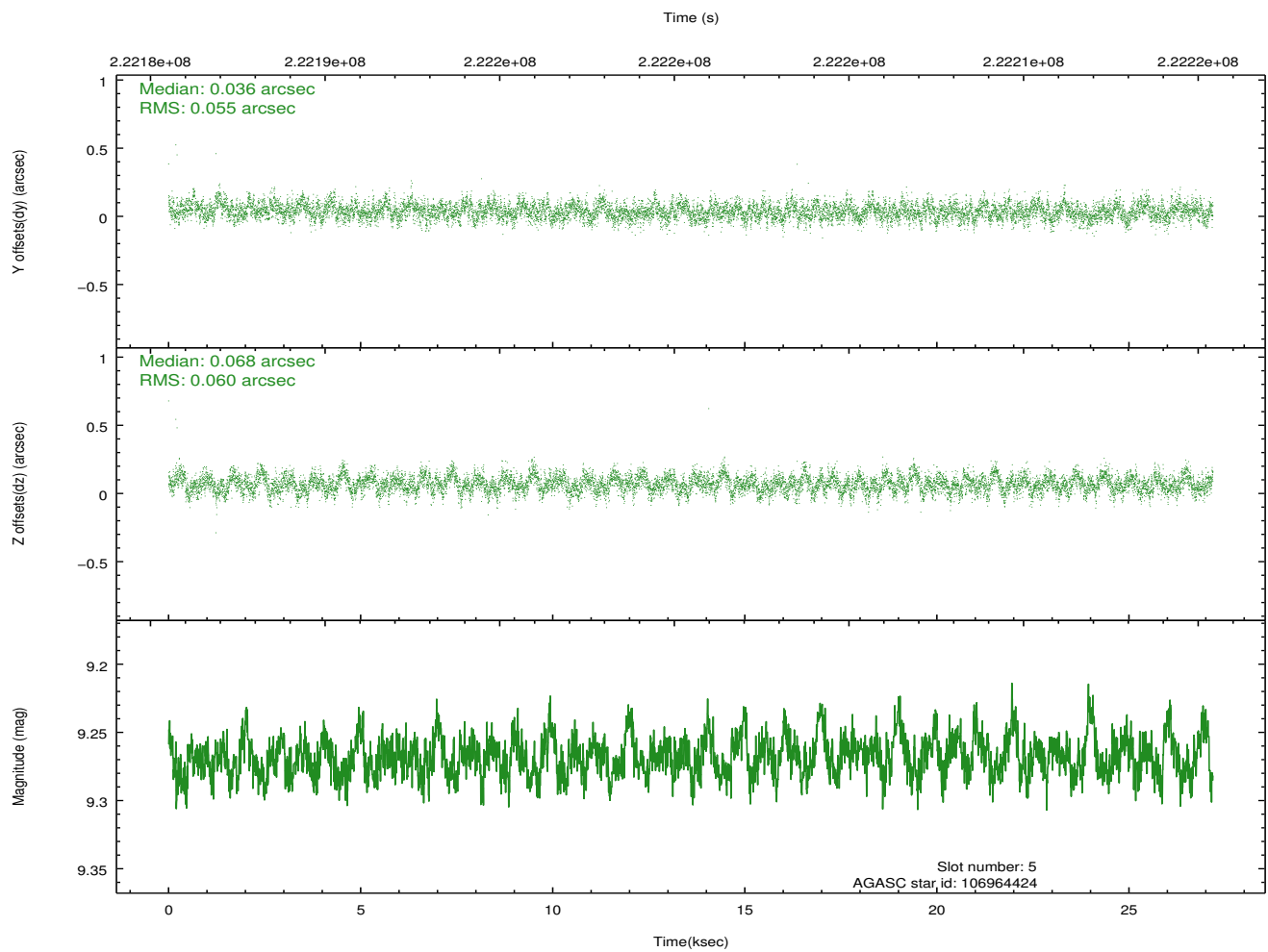
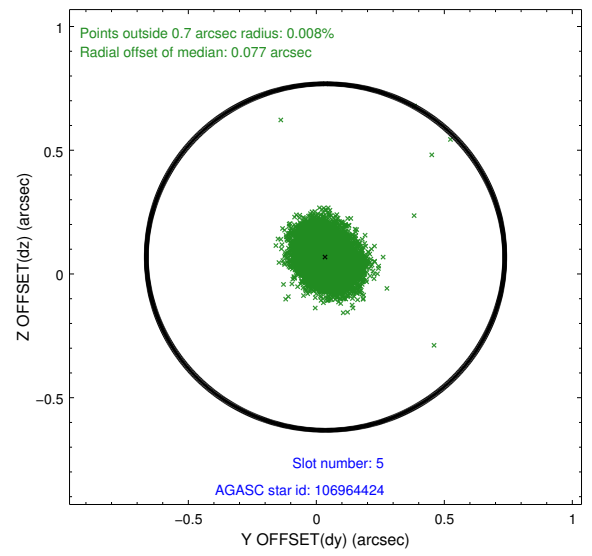
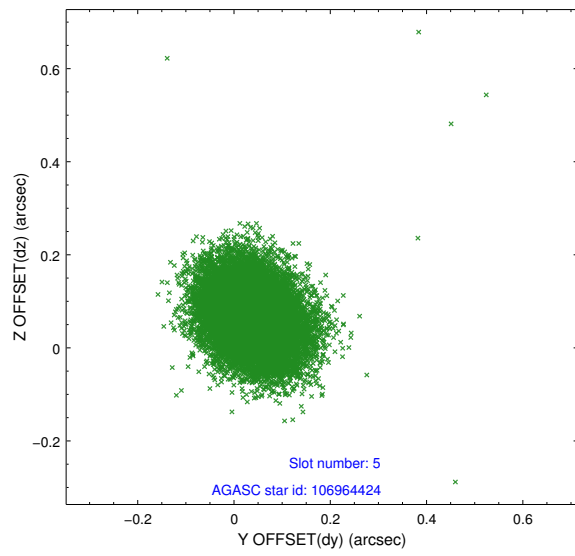
### 2.4.1 Slot 3



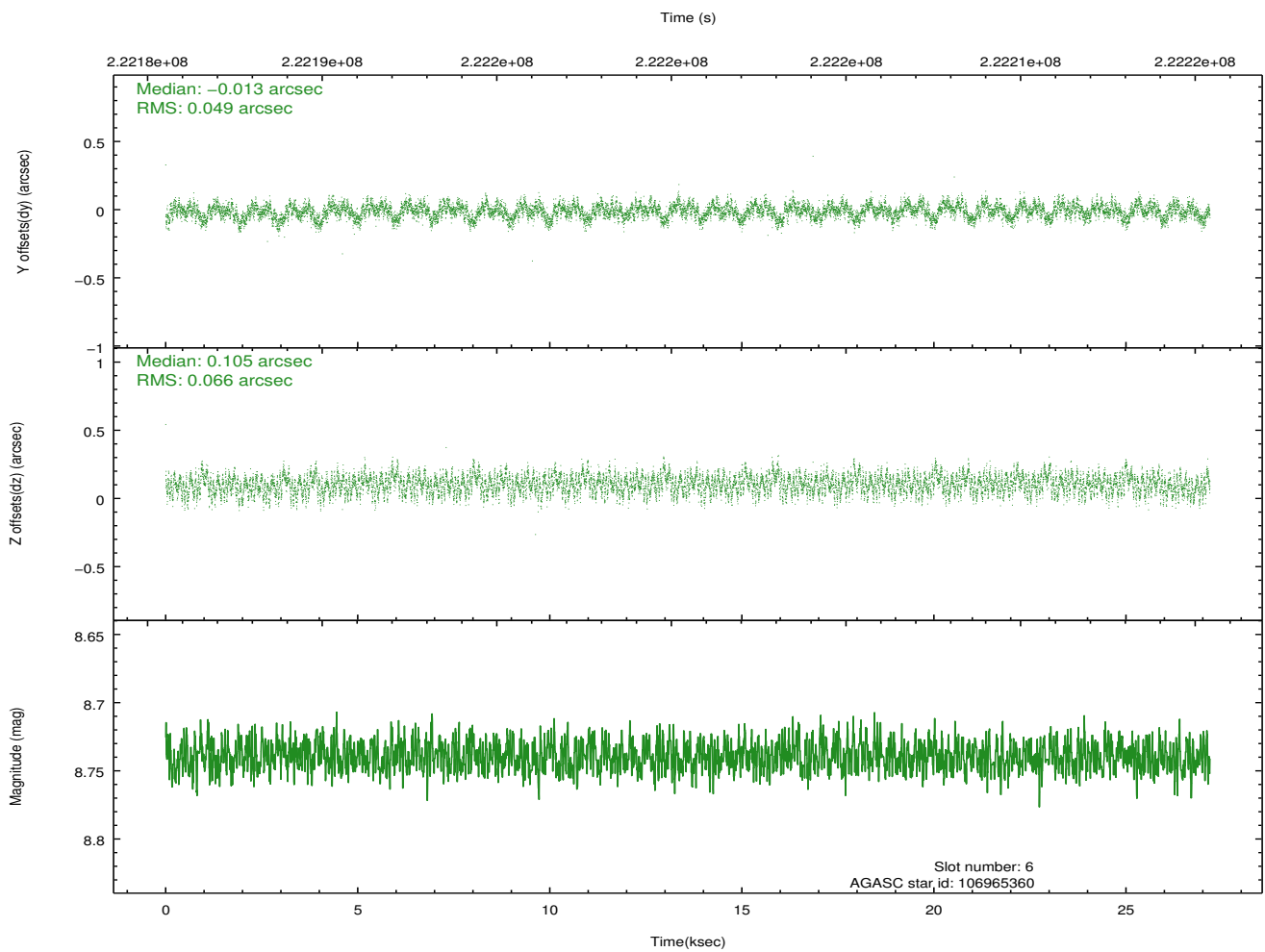
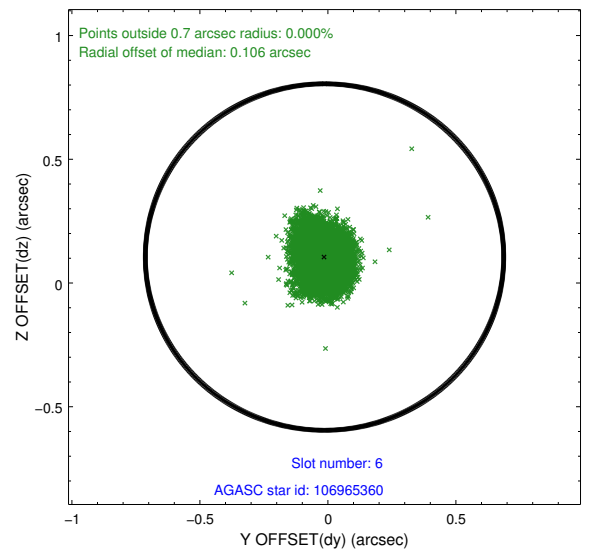
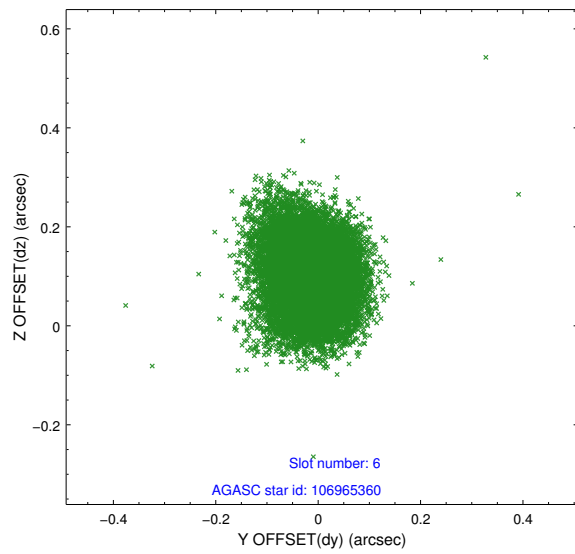
## 2.4.2 Slot 4



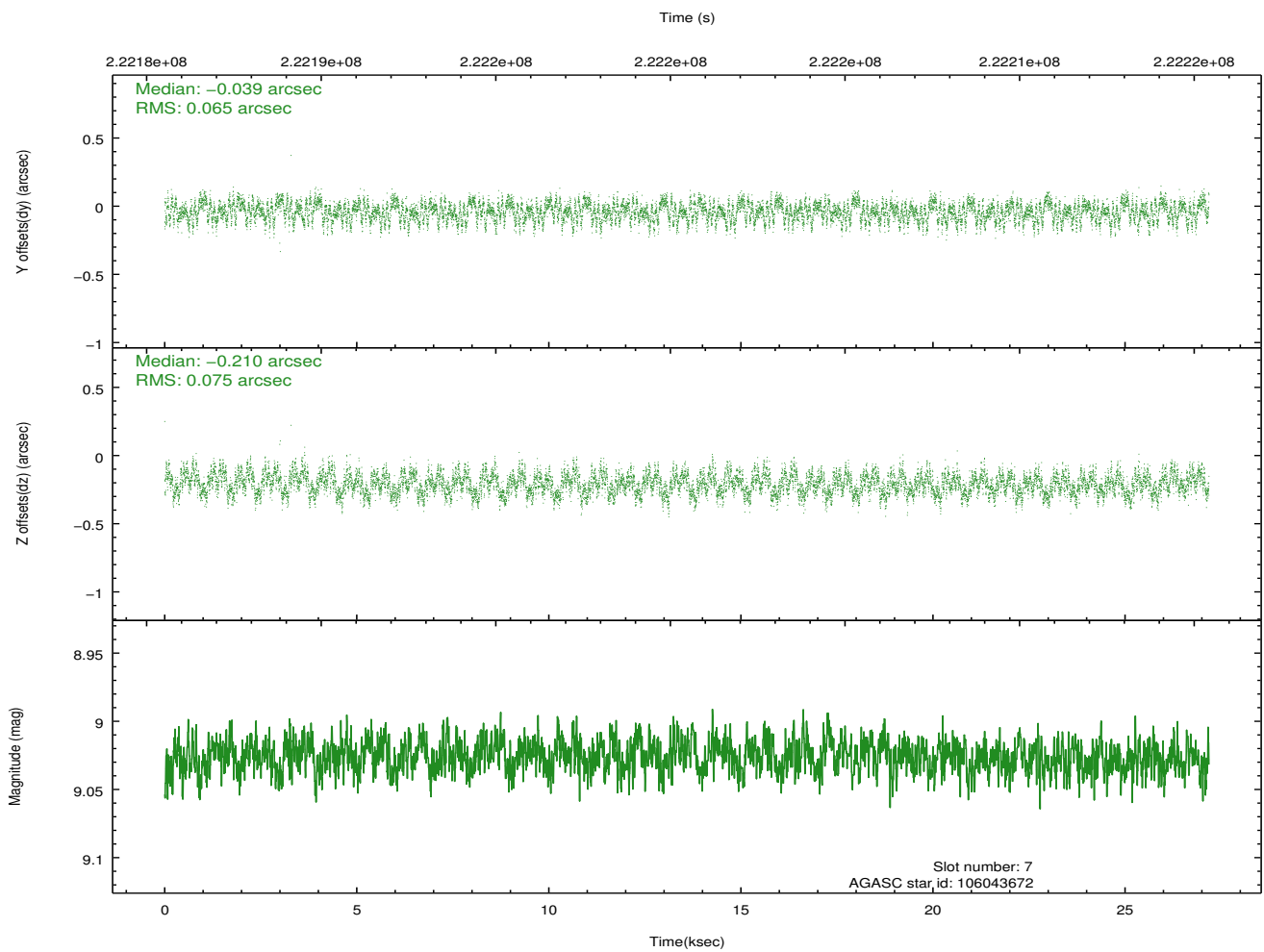
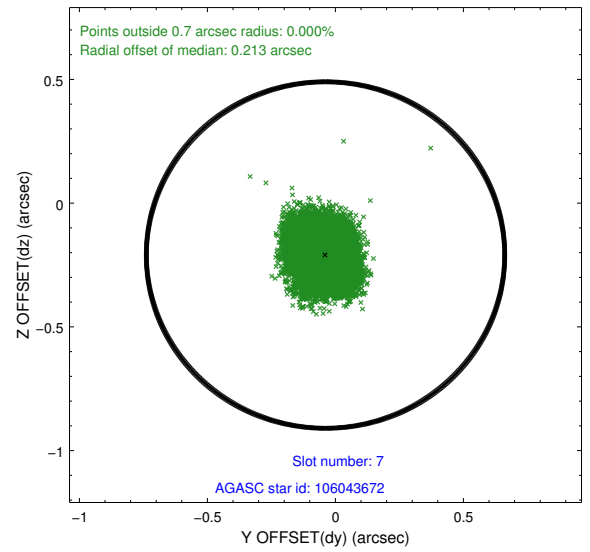
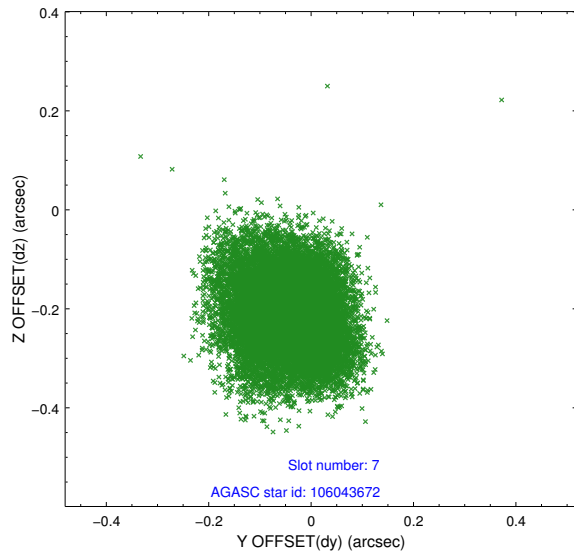
### 2.4.3 Slot 5



## 2.4.4 Slot 6

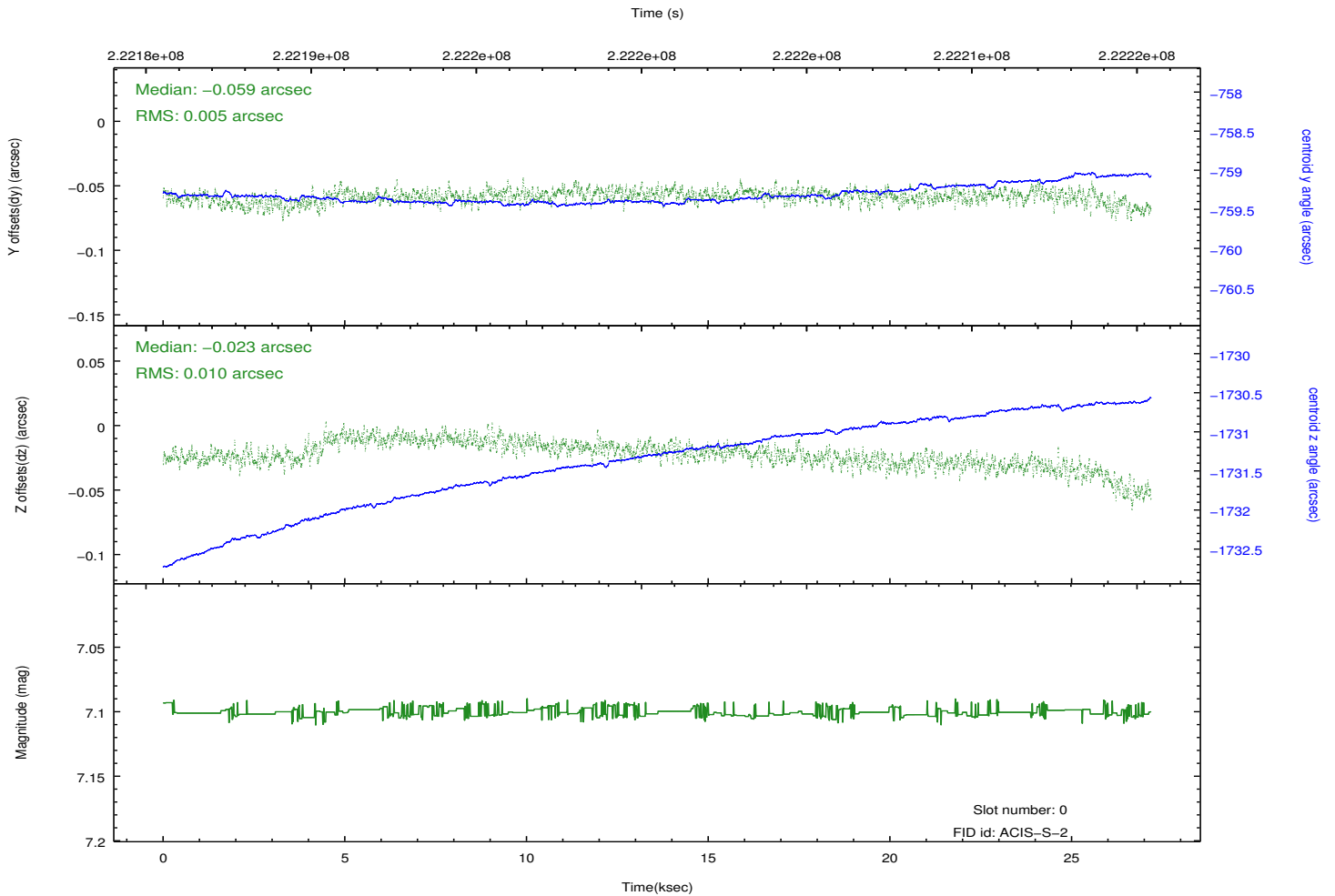
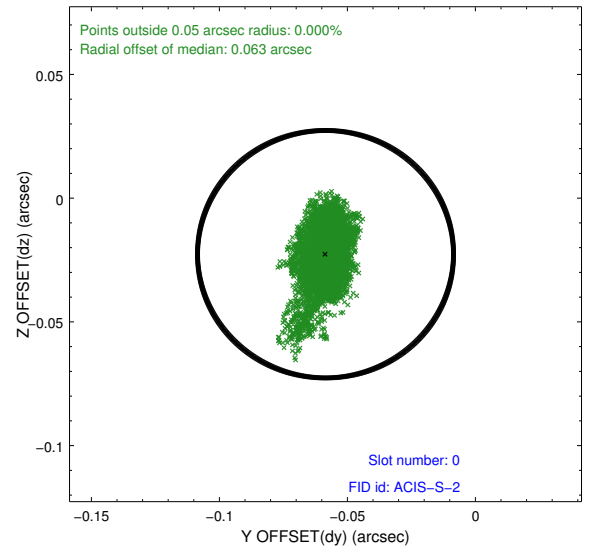
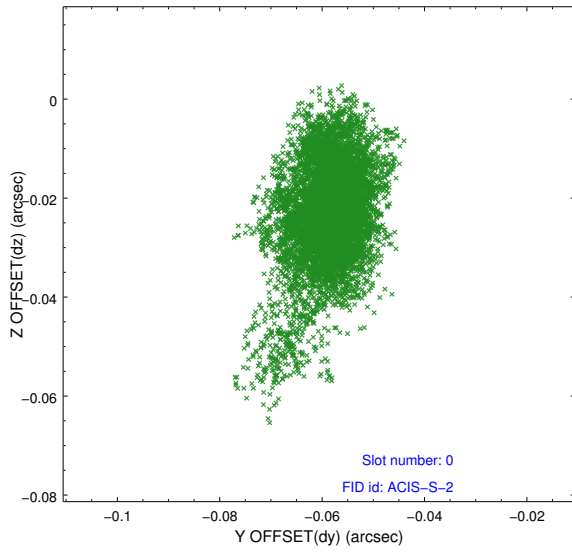


## 2.4.5 Slot 7

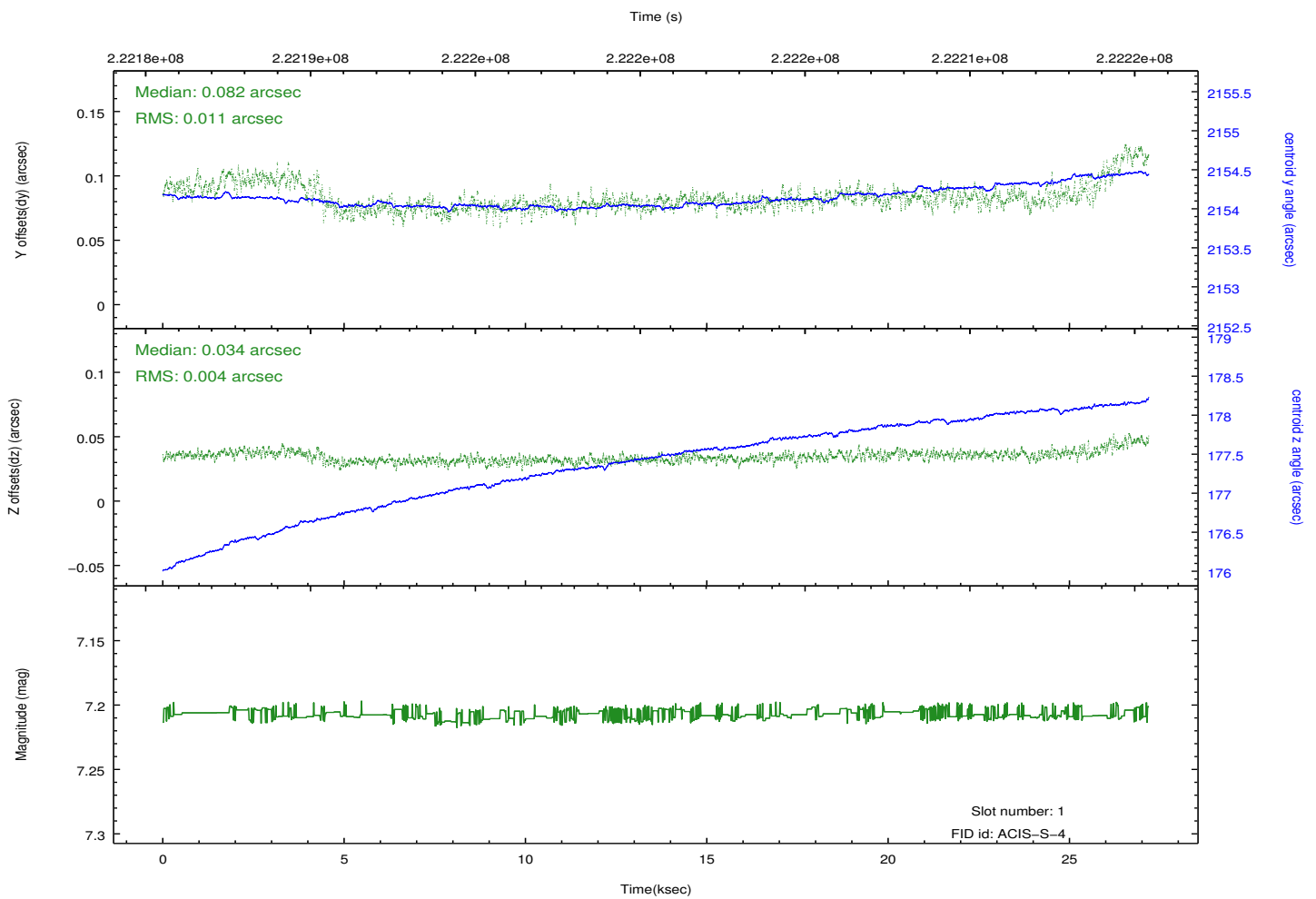
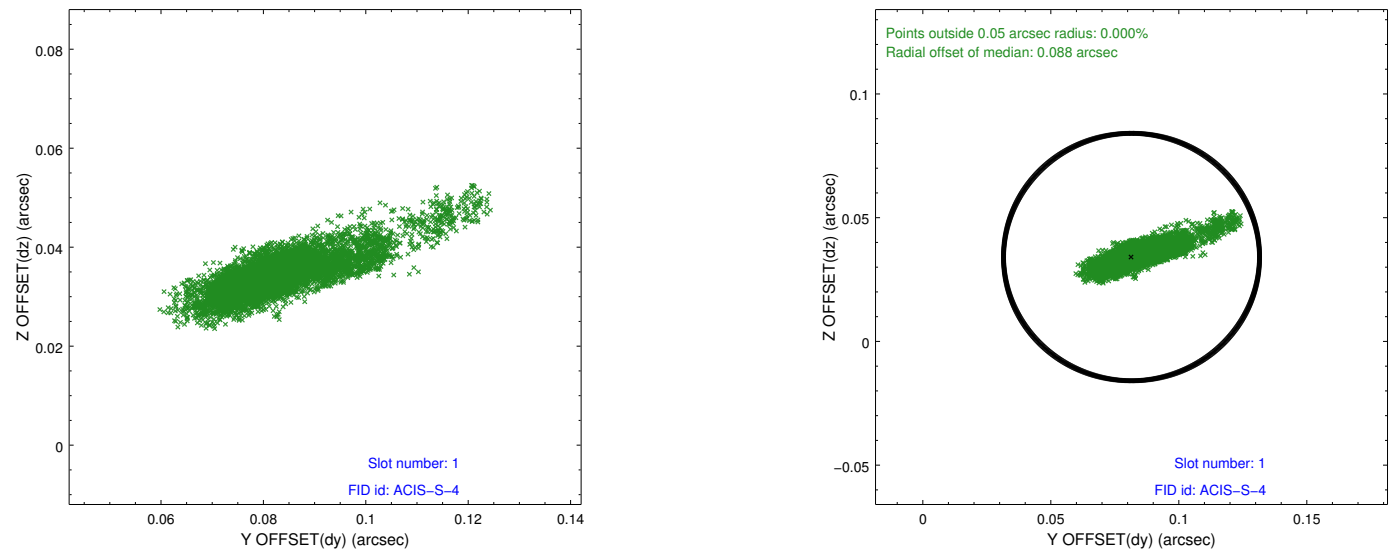


## 2.5 FID Slots

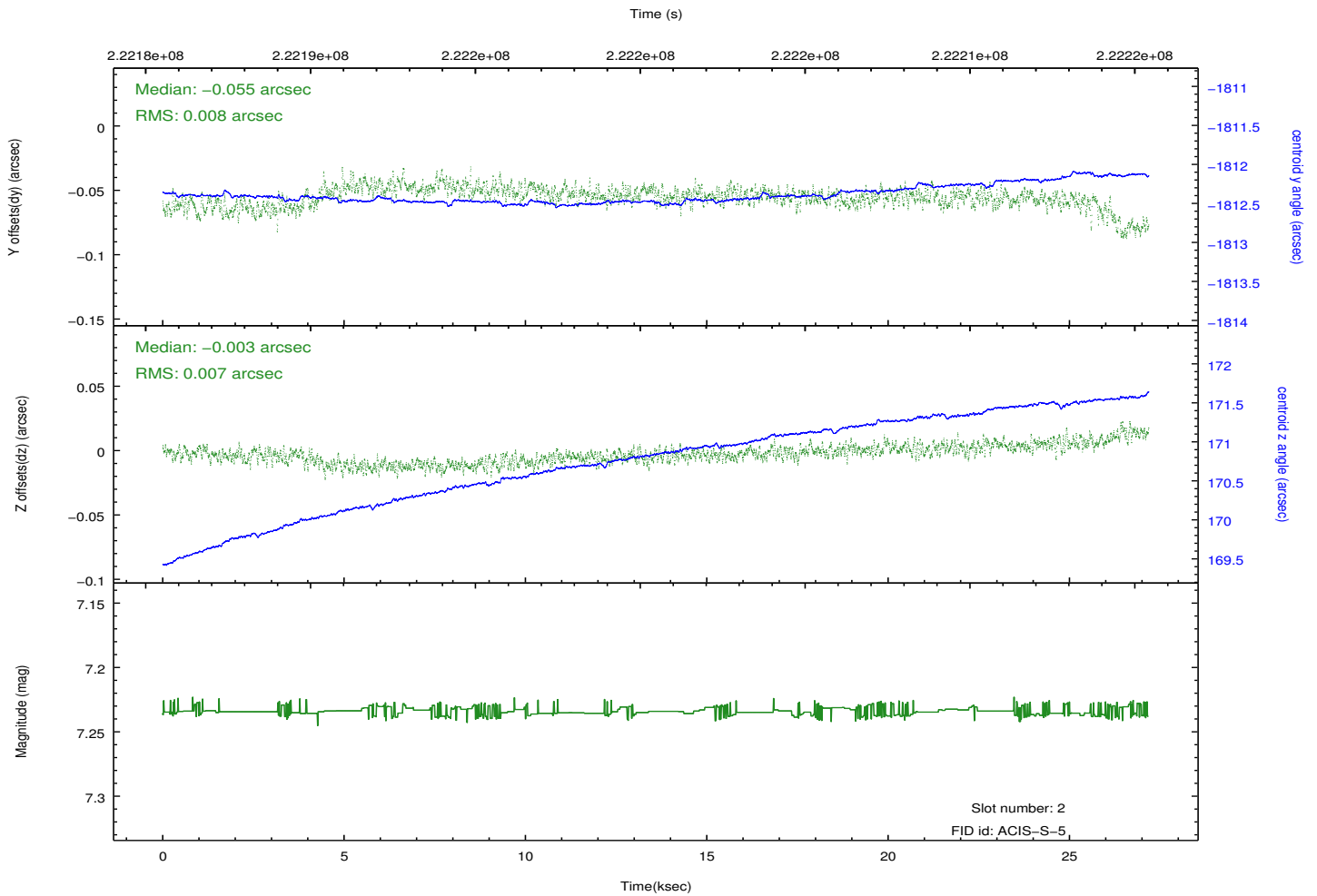
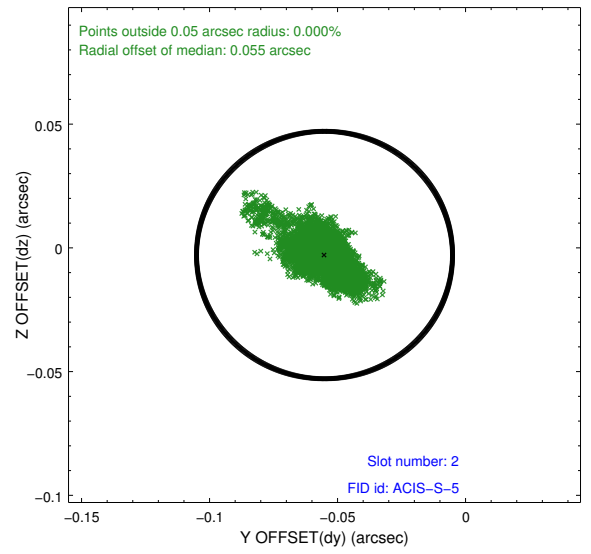
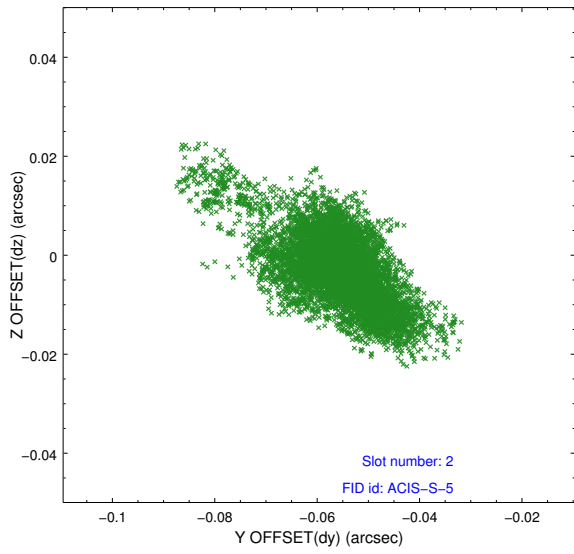
### 2.5.1 Slot 0



## 2.5.2 Slot 1



### 2.5.3 Slot 2



# A Summary

## A.1 Status

V&V Scientist	Jen Lauer
V&V Date (YYYY-MM-DD)	2013.01.08
V&V Edition	1
V&V Disposition and Status	OK
V&V Charge Time	27.18079

## A.2 Comments