

V&V Reference Report

L2 ASCDS Version : 8.5.1.1

Observation 5767 - L2 Version 3
Chandra X-Ray Center

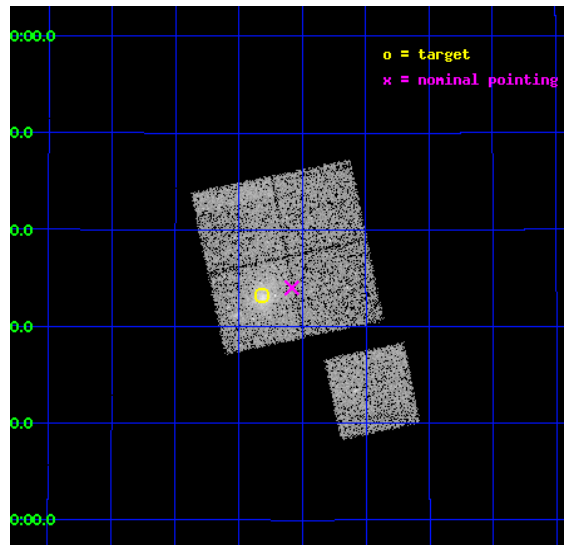
L2 Processing Date : Dec 20 2012

Contents

1	Front	2
2	OBI	3
2.1	OBI	3
2.1.1	Images	3
2.1.2	Bias	3
2.1.3	Parameters	4
2.1.4	Events	4
2.2	Compared Parameters	5
2.3	Aspect	6
2.4	Star Slots	9
2.4.1	Slot 3	9
2.4.2	Slot 4	10
2.4.3	Slot 5	11
2.4.4	Slot 6	12
2.4.5	Slot 7	13
2.5	FID Slots	14
2.5.1	Slot 0	14
2.5.2	Slot 1	15
2.5.3	Slot 2	16
A	Summary	17
A.1	Status	17
A.2	Comments	17

1 Front

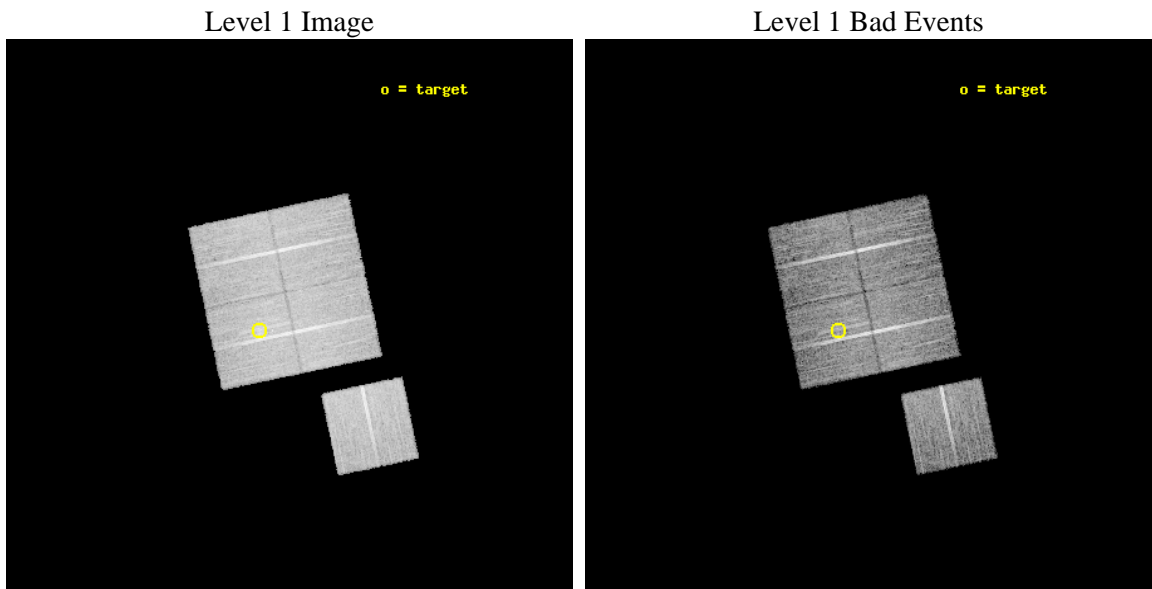
seq_num	800480	Sequence number
obs_id	5767	Observation id
title	DARK ENERGY WITH X-RAY CLUSTERS: CHANDRA OBSERVATIONS OF 41 HIGH-REDSHIFT CLUSTERS FROM THE 400 deg^2 ROSAT PSPC SURVEY	Proposal titl
observer	Dr. Alexey Vikhlinin	Principal investigator
object	cl1212+2733	Source name
dtcycle	0	
cycle	P	events from which exps? Prim/Second/Both
ra_targ	183.08	Observer's specified target RA [deg]
dec_targ	27.553611	Observer's specified target Dec [deg]
ra_nom	183.02054442604	Nominal RA [deg]
dec_nom	27.566777169781	Nominal Dec [deg]
roll_nom	168.09668126163	Nominal Roll [deg]
revision	3	Processing version of data
ontime	14774.41464299	Sum of GTIs [s]
livetime	14581.376038913	Livetime [s]
ontime0	14774.291503042	Sum of GTIs [s]
ontime1	14774.332543045	Sum of GTIs [s]
ontime2	14774.373602986	Sum of GTIs [s]
ontime3	14774.41464299	Sum of GTIs [s]
ontime6	14774.250463039	Sum of GTIs [s]
l2events	42616	Number of level 2 events



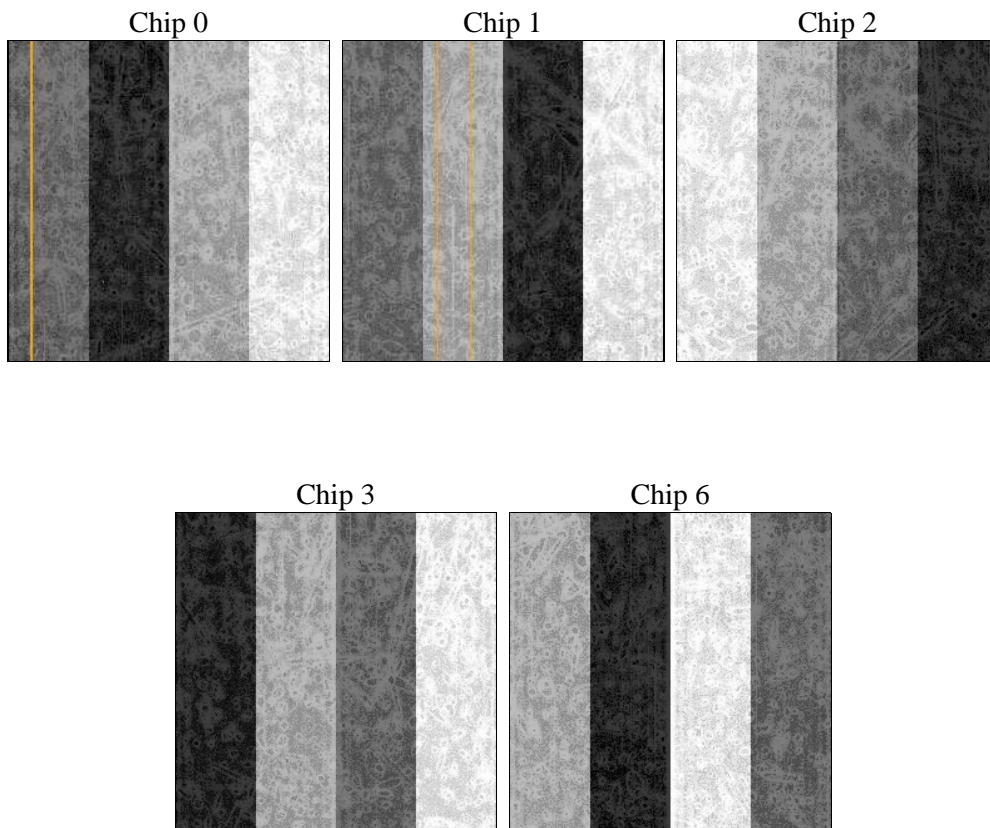
2 OBI

2.1 OBI

2.1.1 Images



2.1.2 Bias



2.1.3 Parameters

obi_num	0	Obi number	sched_exp_time	15000.000000	[s] Scheduled observation exposure time
ascdsver	8.5.1.1	Processing system revision	ontime	14774.41464299	Sum of GTIs [s]
caldbver	4.5.5	 	ontime0	14774.291503042	Sum of GTIs [s]
date	2012-12-20T15:49:51	Date and time of file creation	ontime1	14774.332543045	Sum of GTIs [s]
revision	3	Processing version of data	ontime2	14774.373602986	Sum of GTIs [s]
			ontime3	14774.41464299	Sum of GTIs [s]
			ontime6	14774.250463039	Sum of GTIs [s]
			l1events	459286	Number of level 1 events

2.1.4 Events

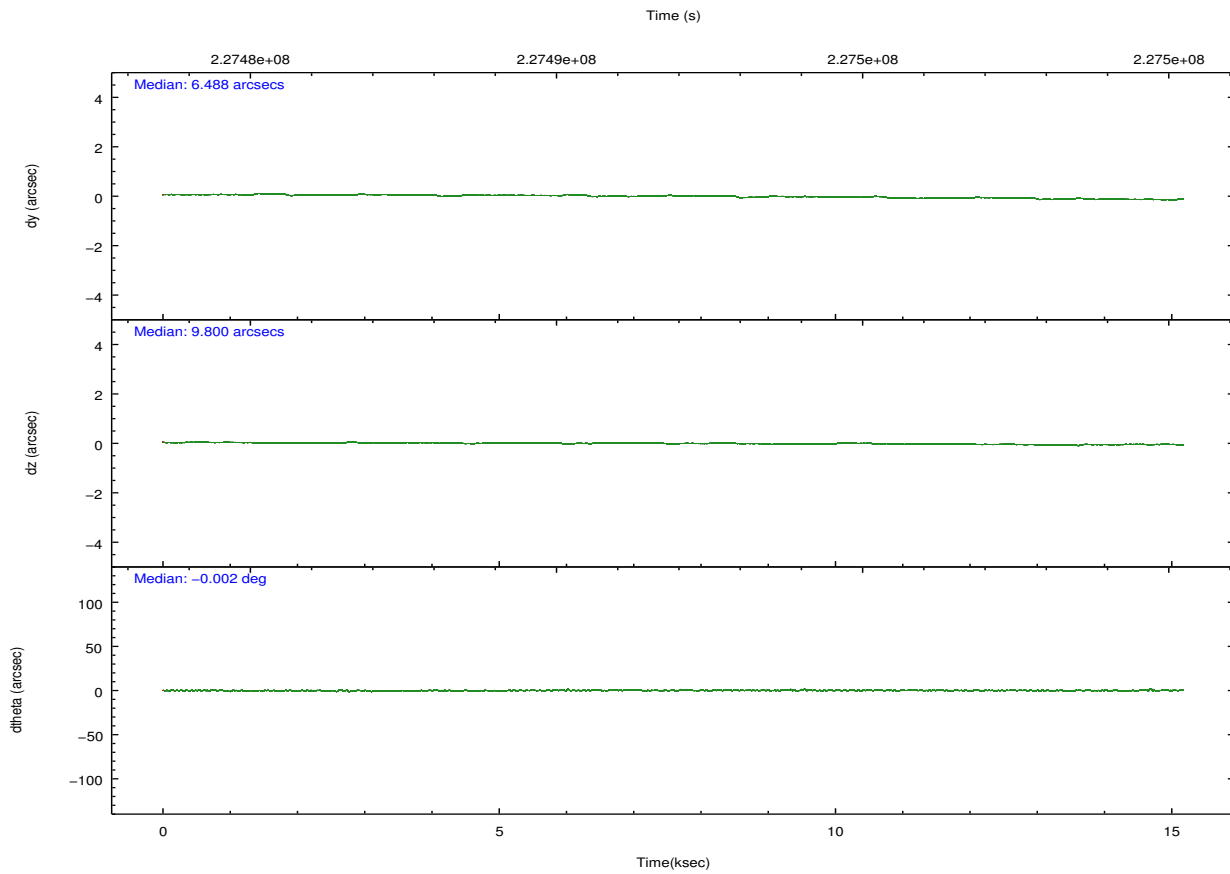
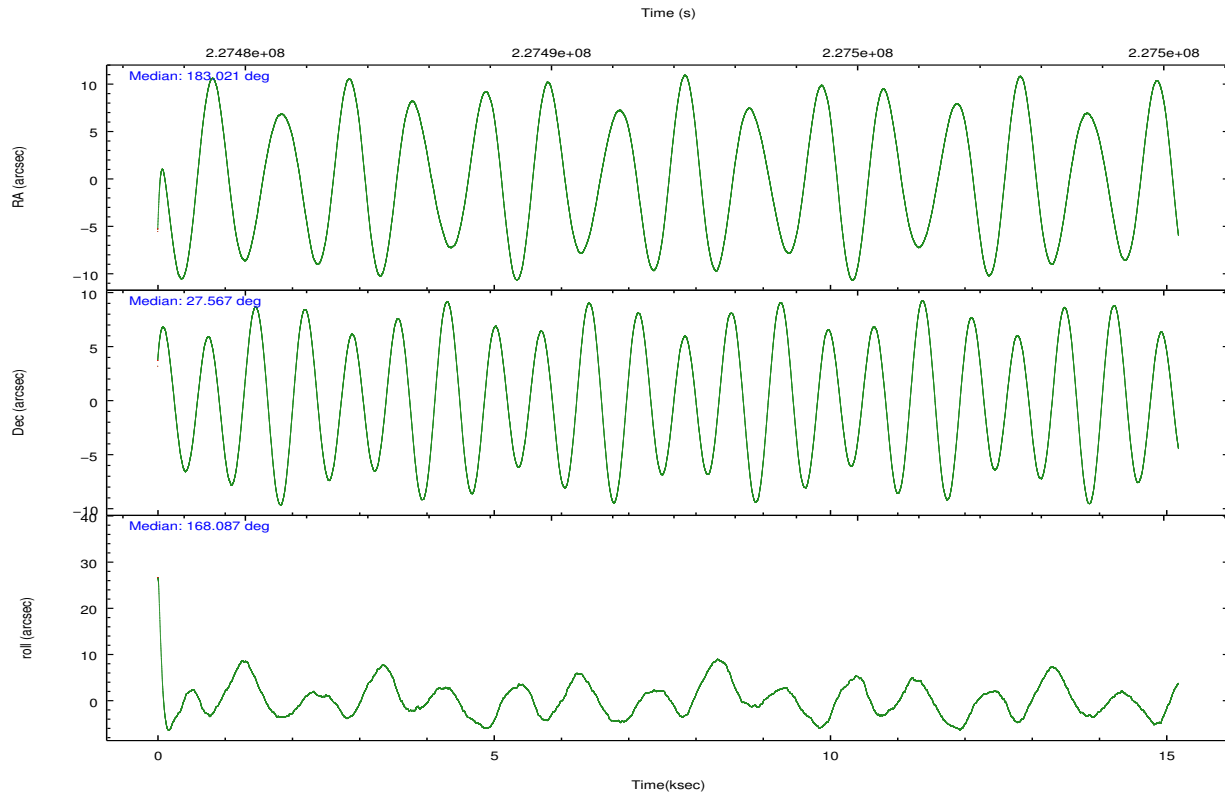
	ccd 0	ccd 1	ccd 2	ccd 3	ccd 6
level 1 events	85657	87186	97104	95861	93478
rejected events	76382	76807	88048	83255	83966
rejected %	89%	88%	90%	86%	89%

	ccd 0	ccd 1	ccd 2	ccd 3	ccd 6
grade 0 events	3154	3710	3251	6285	3387
	3%	4%	3%	6%	3%
grade 1 events	53	44	61	74	48
	0%	0%	0%	0%	0%
grade 2 events	2248	2268	2120	2281	1939
	2%	2%	2%	2%	2%
grade 3 events	1029	1156	1019	1061	1148
	1%	1%	1%	1%	1%
grade 4 events	1040	1183	1040	1136	1033
	1%	1%	1%	1%	1%
grade 5 events	3186	3494	3038	3627	3567
	3%	4%	3%	3%	3%
grade 6 events	1807	2064	1627	1843	2007
	2%	2%	1%	1%	2%
grade 7 events	73140	73267	84948	79554	80349
	85%	84%	87%	82%	85%

2.2 Compared Parameters

Parameter	Planned	Actual	Parameter	Planned	Actual
Instrument	ACIS	ACIS	Obspar format version number	7	7
Detector	ACIS-01236	ACIS-01236	Obspar file type	PREDICTED	ACTUAL
Grating	NONE	NONE	Obspar update status	NONE	UPDATED
Data mode	VFAINT	VFAINT	Number of optional ACIS chips dropped	0	0
Observation mode	POINTING	POINTING	On-chip summing requested	N	N
[deg] Pointing RA	183.049893	183.0205444260394	Subarray requested	NONE	NONE
[deg] Pointing Dec	27.575367	27.56677716978054	Alternating exposures requested	N	N
[deg] Pointing Roll	167.874379	168.096681261628	[s] Primary exposure time	0.000000	3.1
[mm] SIM focus pos	-0.782348	-0.7809083437167272			
[mm] SIM defocus	0	0.001439871863259334			
[mm] SIM translation stage pos	-225.840463	-225.8458576473255			
[mm] SIM translation stage offset	-7.752	-7.746595355604228			
[s] Observation start time (MET)	227484494.184000	227483145.53351			
Observation start date	2005-03-17T22:07:10	2005-03-17T21:45:45			
[s] Observation end time (MET)	227499494.184000	227500440.8718			
Observation end date	2005-03-18T02:17:10	2005-03-18T02:34:00			
Read mode	TIMED	TIMED			

2.3 Aspect

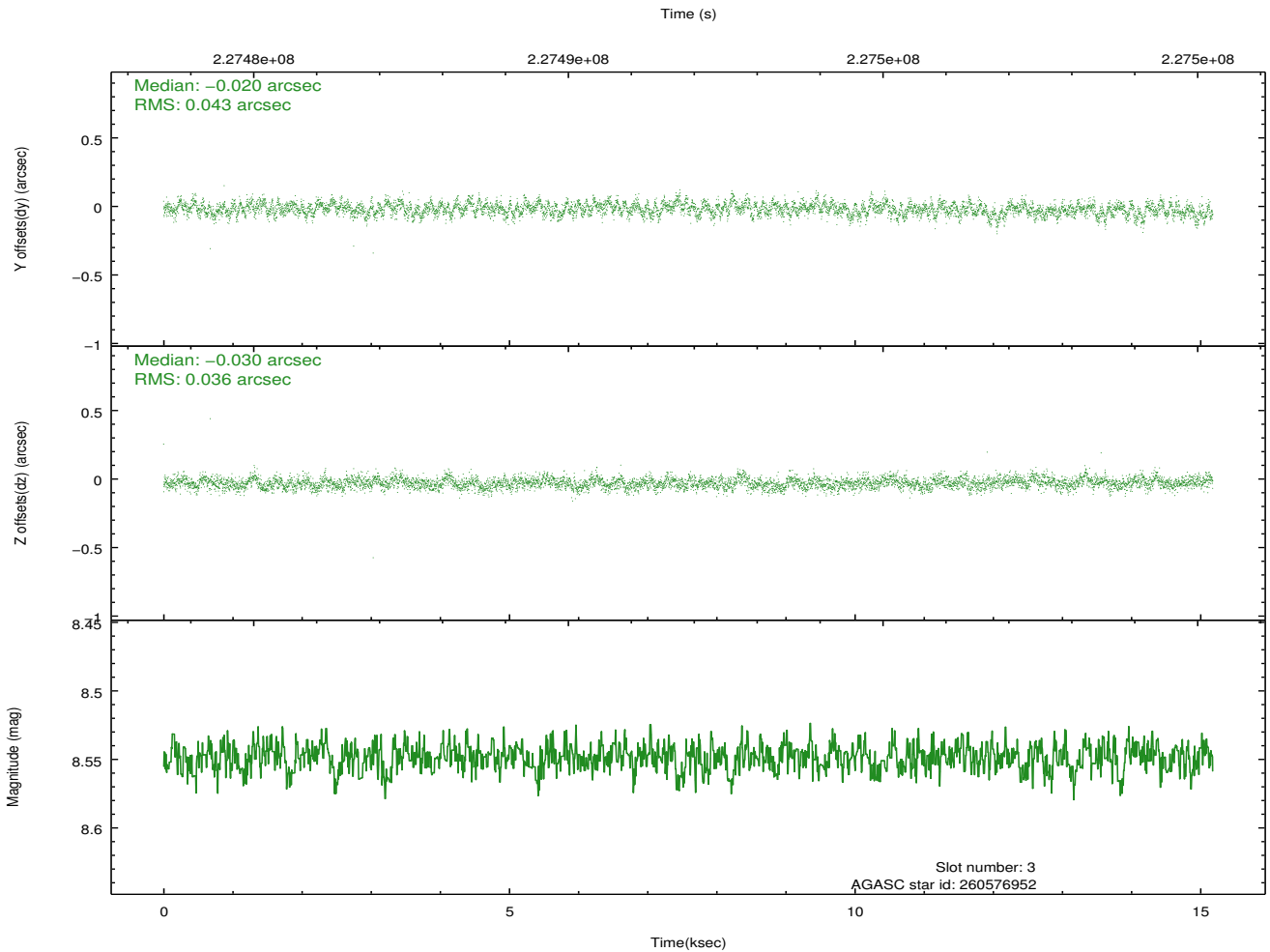
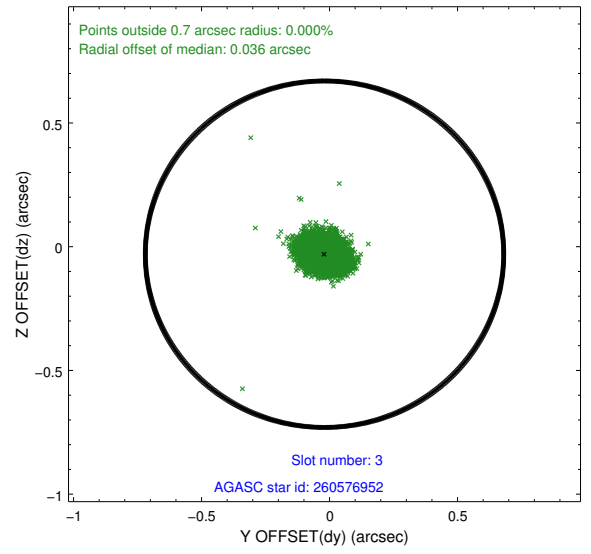
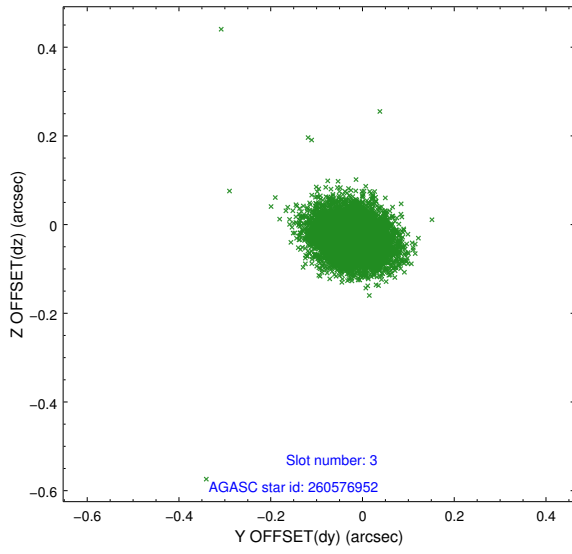


Slot Statistics

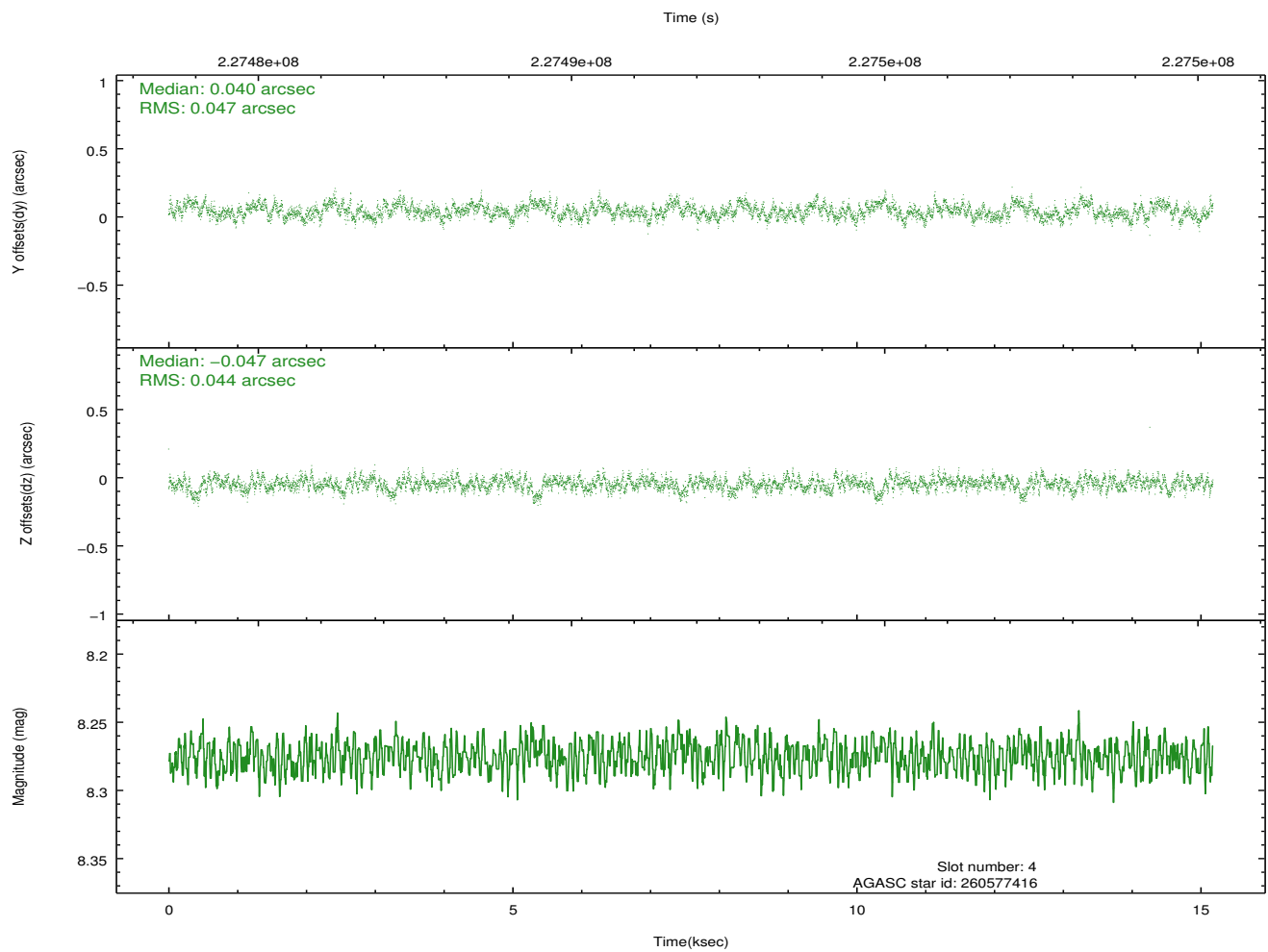
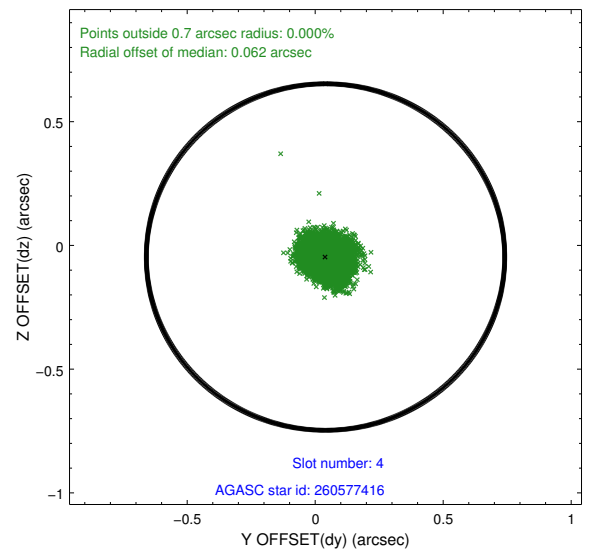
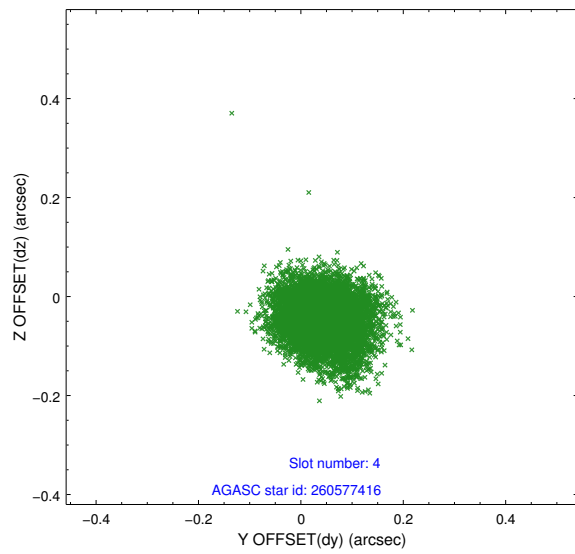
slot	status	id	mag	n_pts	med_dy	med_dz	dr1	dr2	ra	dec	mean_y	mean_z
0	FID	ACIS-I-1	7.24	3703	0.092	-0.086	0.010	0.022	0.000000	0.000000	933.17	-992.37
1	FID	ACIS-I-5	7.22	3702	-0.224	0.082	0.011	0.026	0.000000	0.000000	-1815.10	905.09
2	FID	ACIS-I-6	7.25	3703	0.042	0.076	0.010	0.021	0.000000	0.000000	398.34	1549.93
3	GUIDE	260576952	8.55	7399	-0.020	-0.030	0.058	0.096	183.404142	27.131507	-1445.03	1322.21
4	GUIDE	260577416	8.28	7403	0.040	-0.047	0.069	0.111	183.103729	27.380091	-316.02	651.42
5	GUIDE	260578328	9.90	7394	0.038	0.042	0.124	0.202	183.377446	27.043485	-1428.65	1650.17
6	GUIDE	260580128	8.53	7405	-0.050	0.121	0.084	0.138	182.584429	28.318514	2005.17	-2307.74
7	GUIDE	260583352	6.40	7404	-0.008	-0.089	0.084	0.133	182.692069	27.281504	897.67	1273.16

2.4 Star Slots

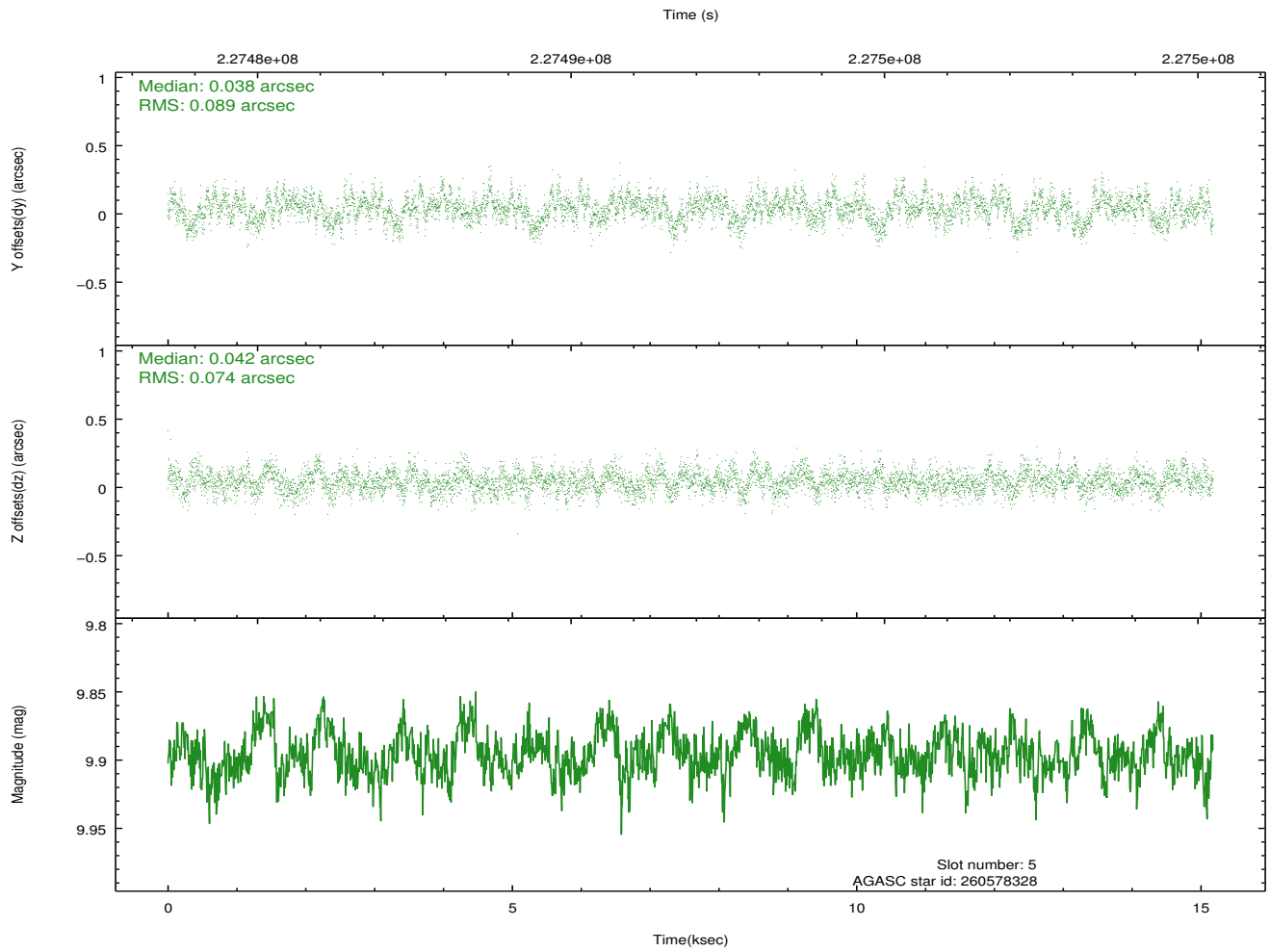
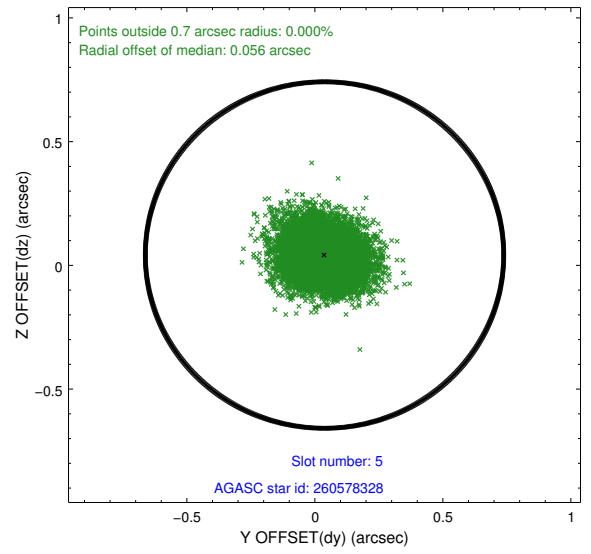
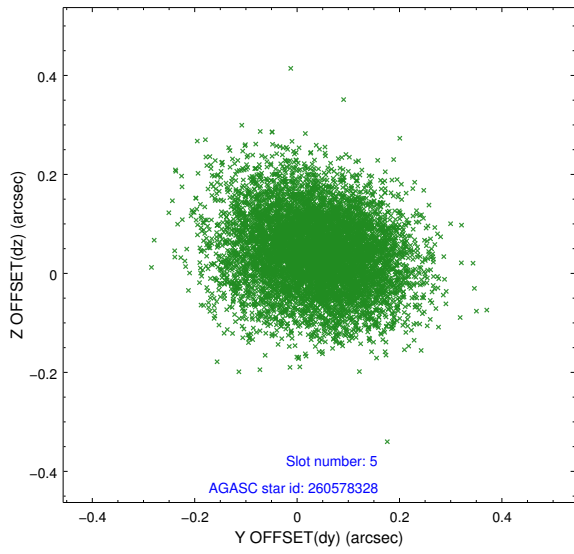
2.4.1 Slot 3



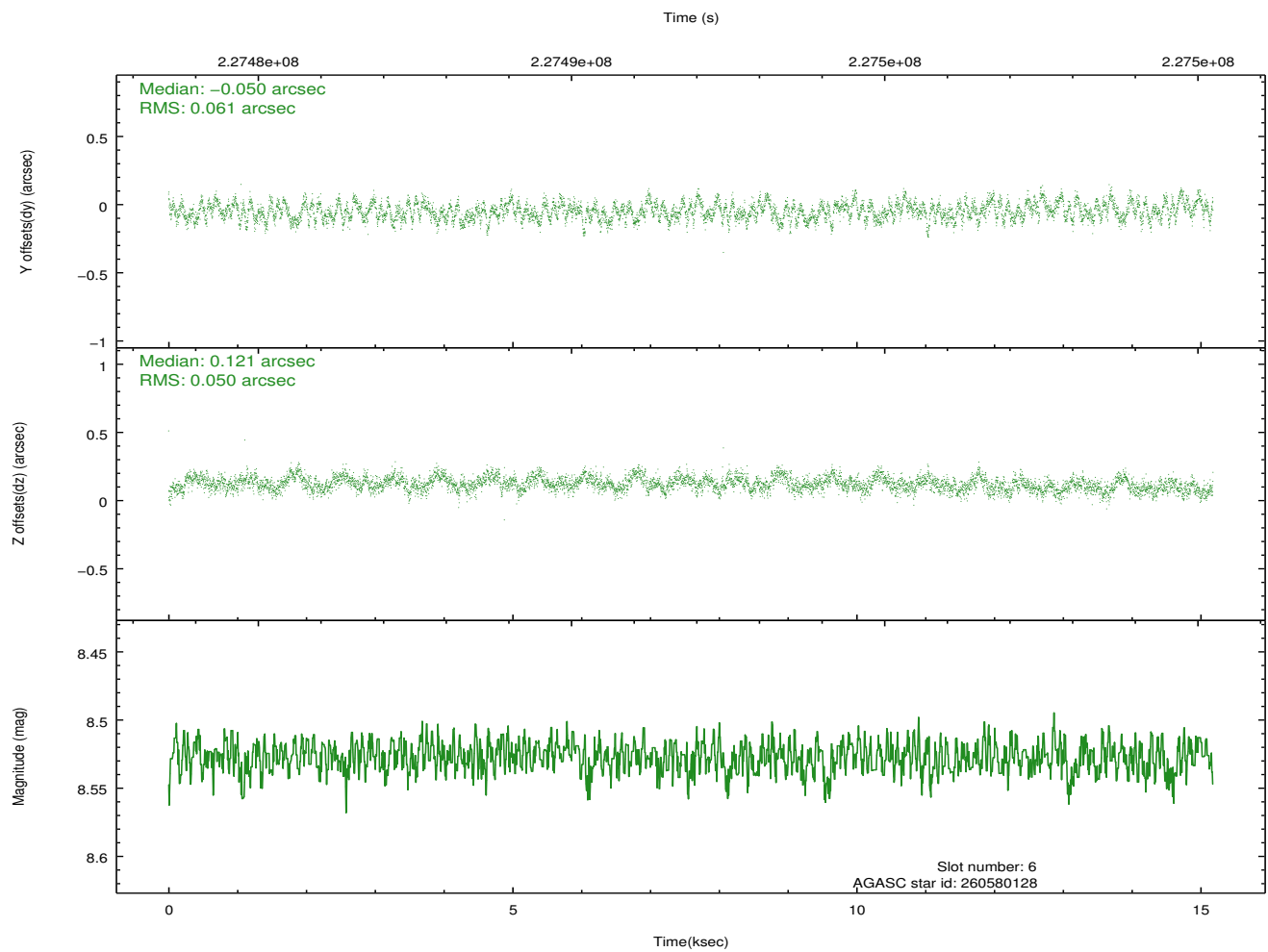
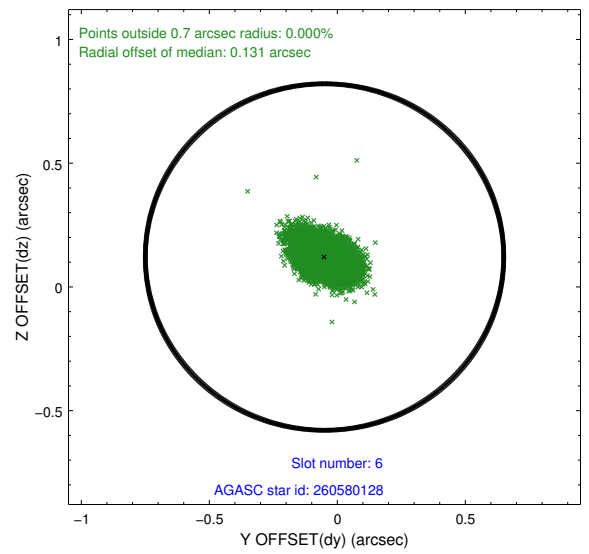
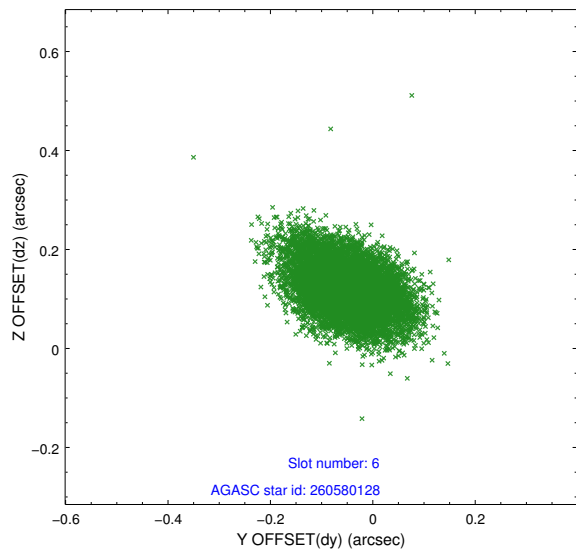
2.4.2 Slot 4



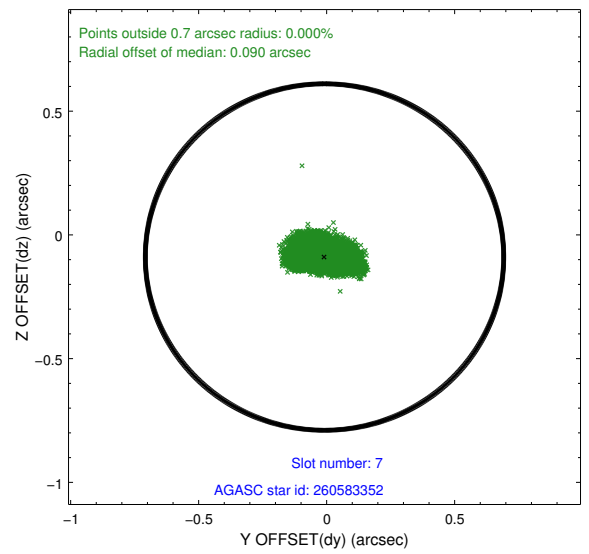
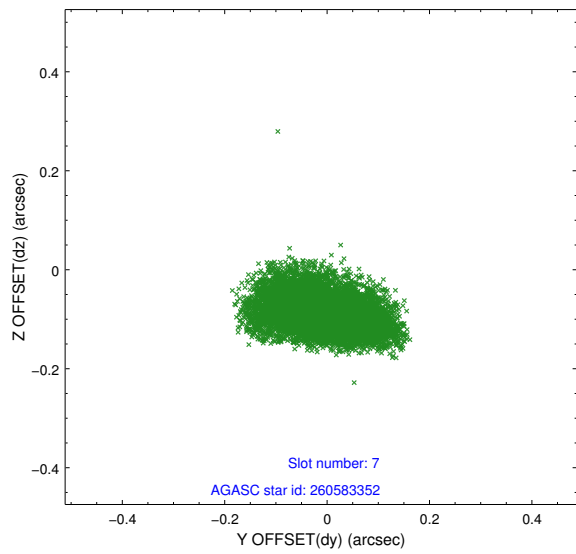
2.4.3 Slot 5



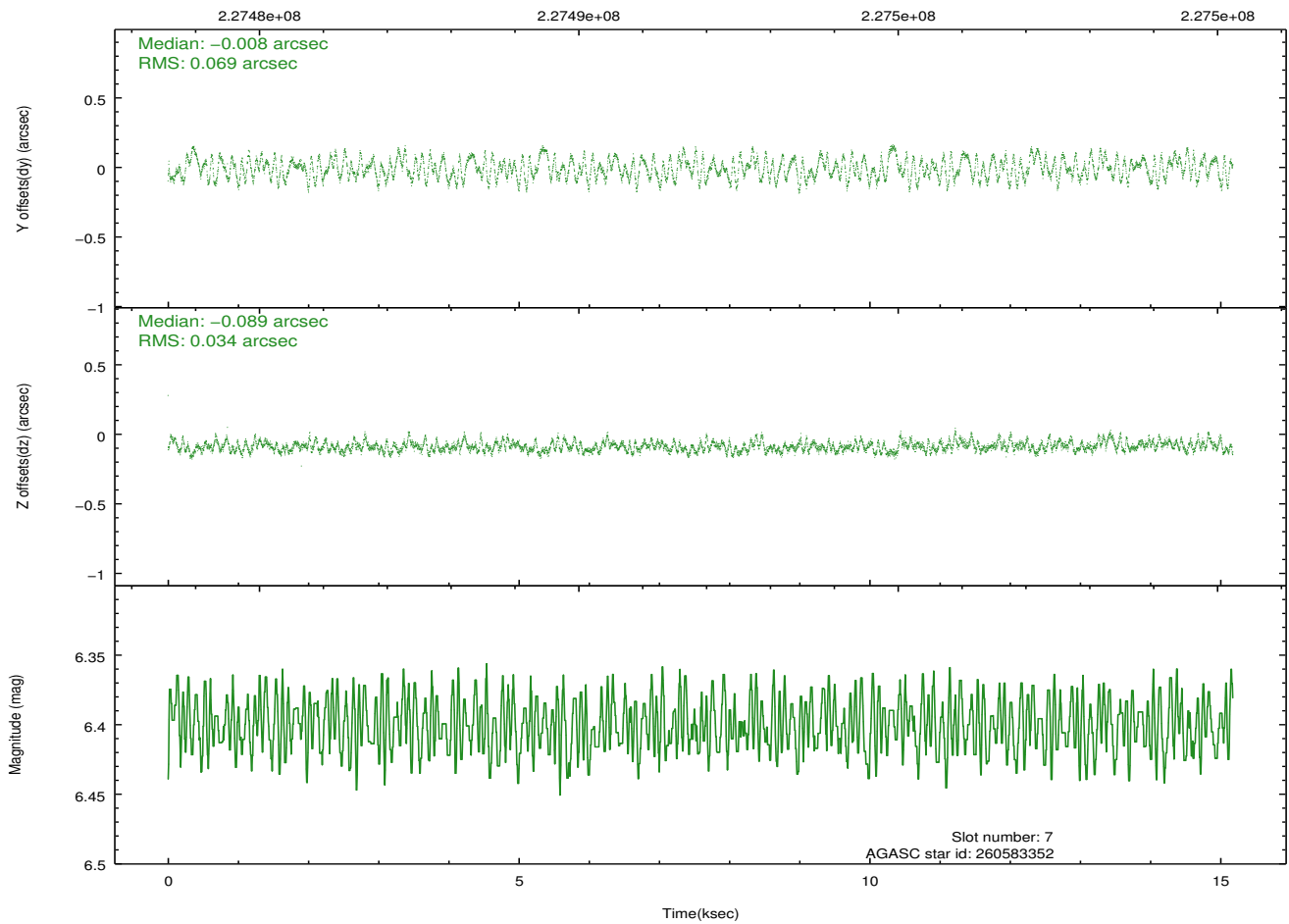
2.4.4 Slot 6



2.4.5 Slot 7

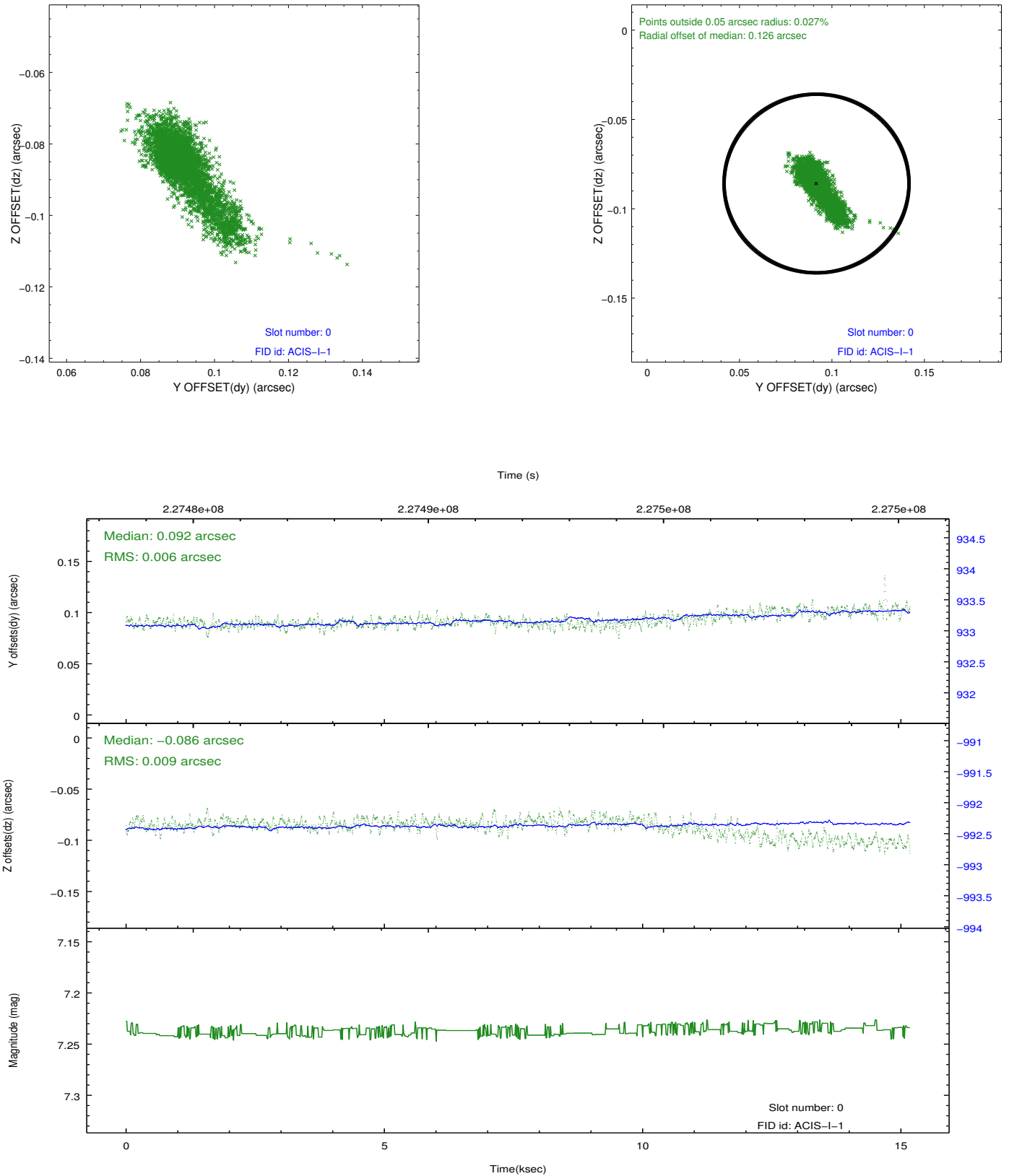


Time (s)

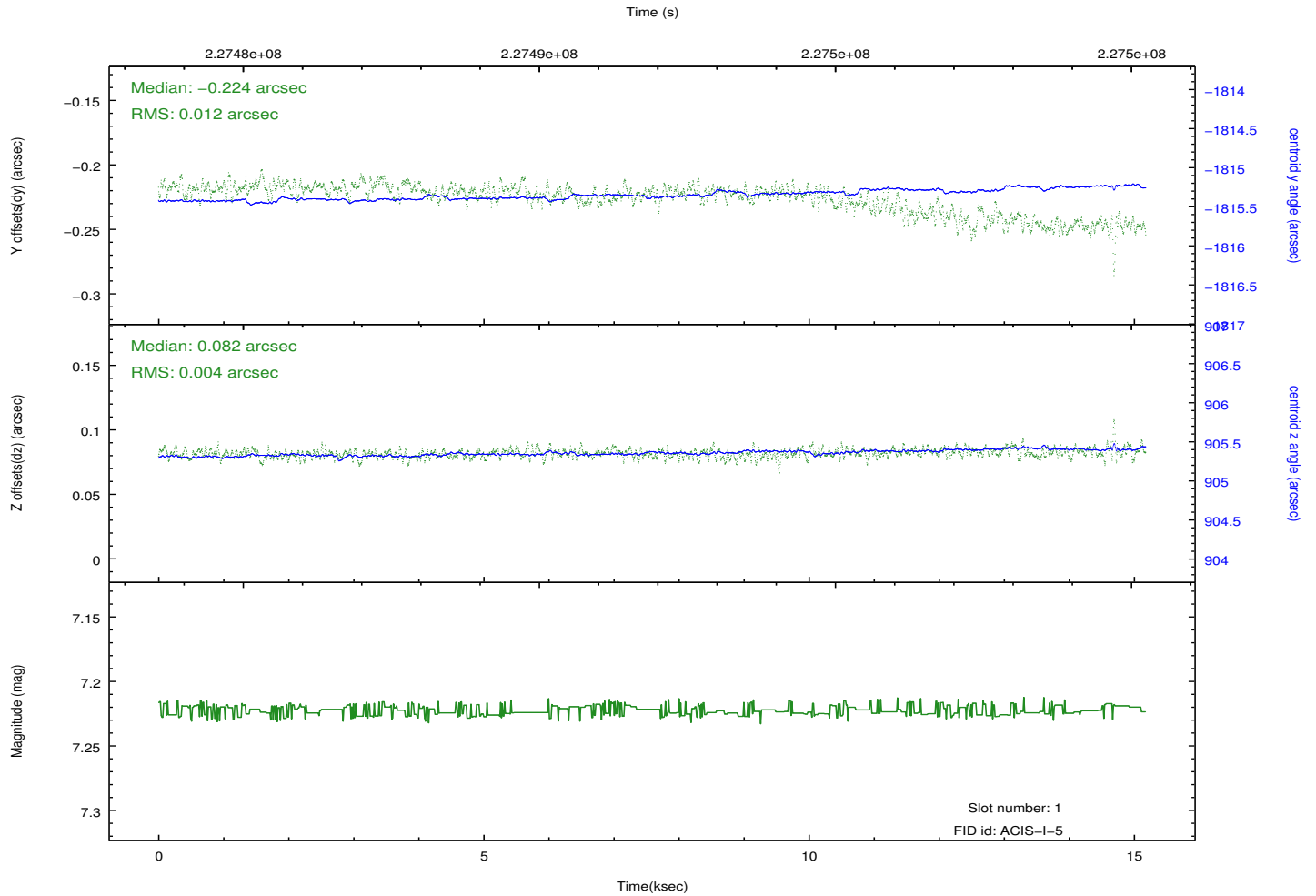
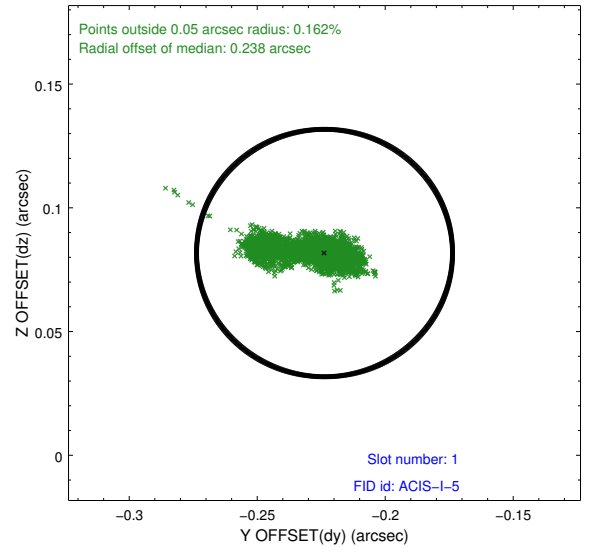
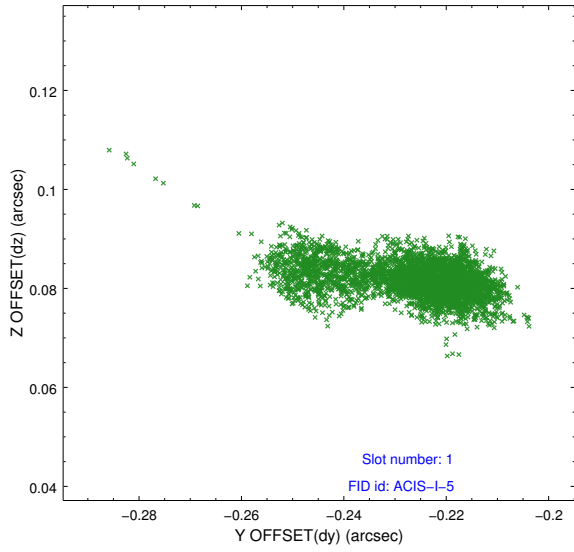


2.5 FID Slots

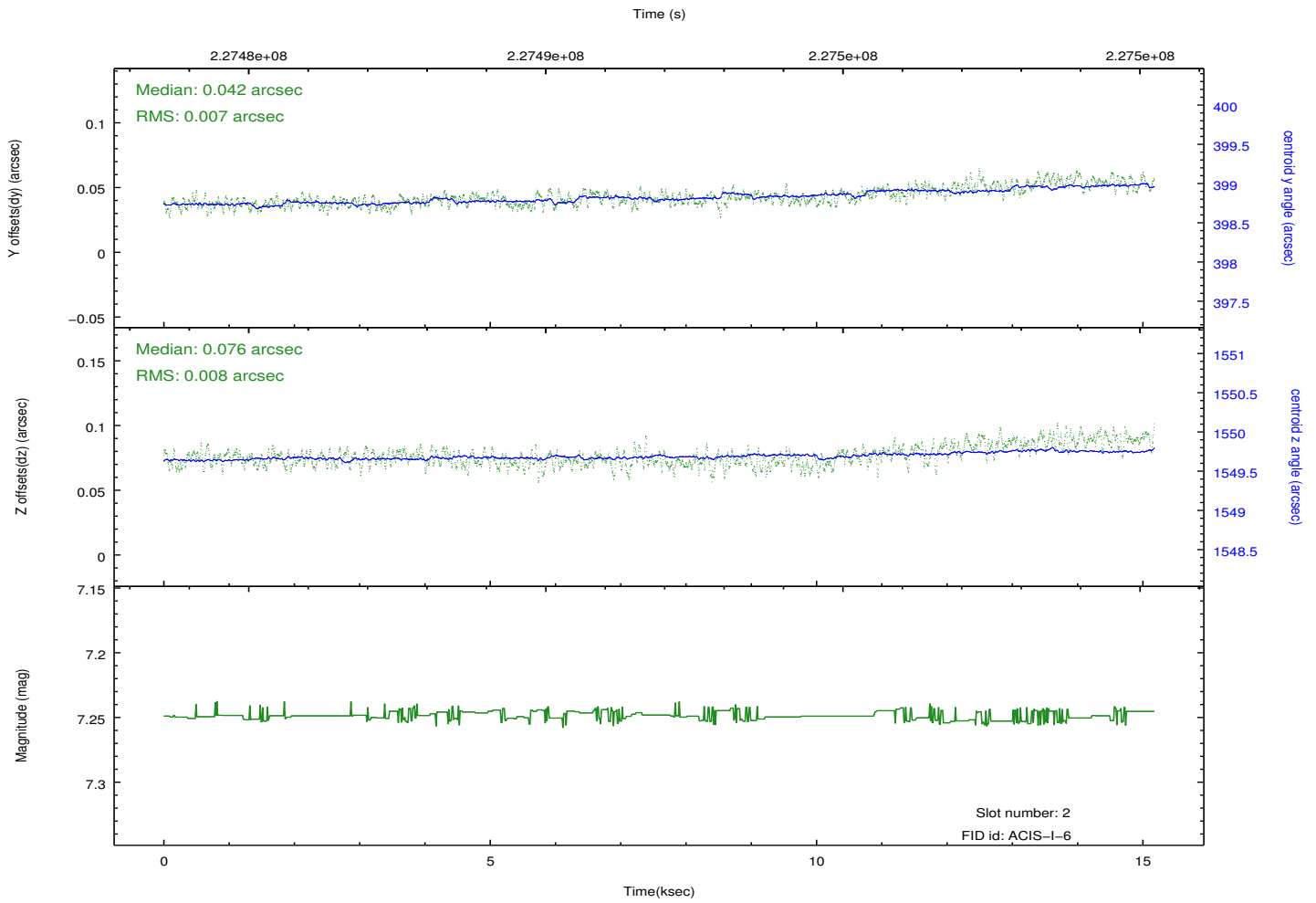
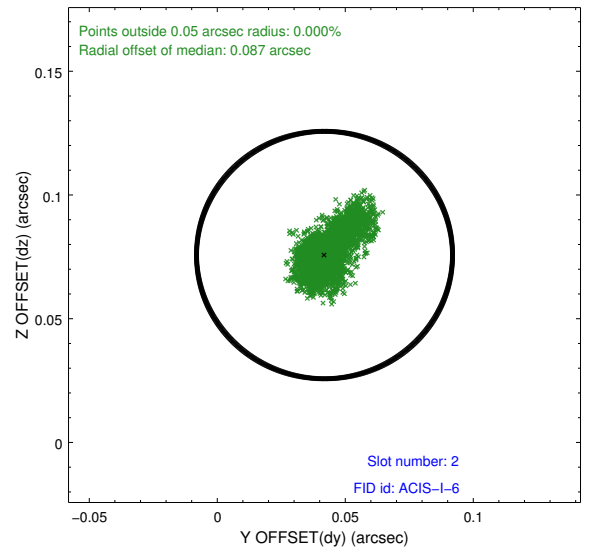
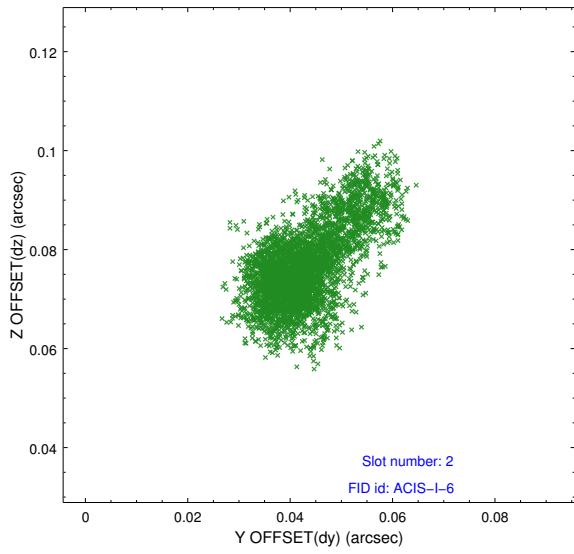
2.5.1 Slot 0



2.5.2 Slot 1



2.5.3 Slot 2



A Summary

A.1 Status

V&V Scientist	Jen Lauer
V&V Date (YYYY-MM-DD)	2013.01.11
V&V Edition	1
V&V Disposition and Status	OK
V&V Charge Time	14.77459

A.2 Comments