

# V&V Reference Report

## L2 ASCDS Version : 8.4.4

Observation 57687 - L2 Version 2  
Chandra X-Ray Center

L2 Processing Date : May 18 2012

## Contents

<b>1</b>	<b>Front</b>	<b>2</b>
<b>2</b>	<b>OBI</b>	<b>3</b>
2.1	OBI . . . . .	3
2.1.1	Images . . . . .	3
2.1.2	Bias . . . . .	3
2.1.3	Parameters . . . . .	4
2.1.4	Events . . . . .	4
2.2	Compared Parameters . . . . .	5
2.3	Star Slots . . . . .	6
2.4	FID Slots . . . . .	6
<b>A</b>	<b>Summary</b>	<b>7</b>
A.1	Status . . . . .	7
A.2	Comments . . . . .	7

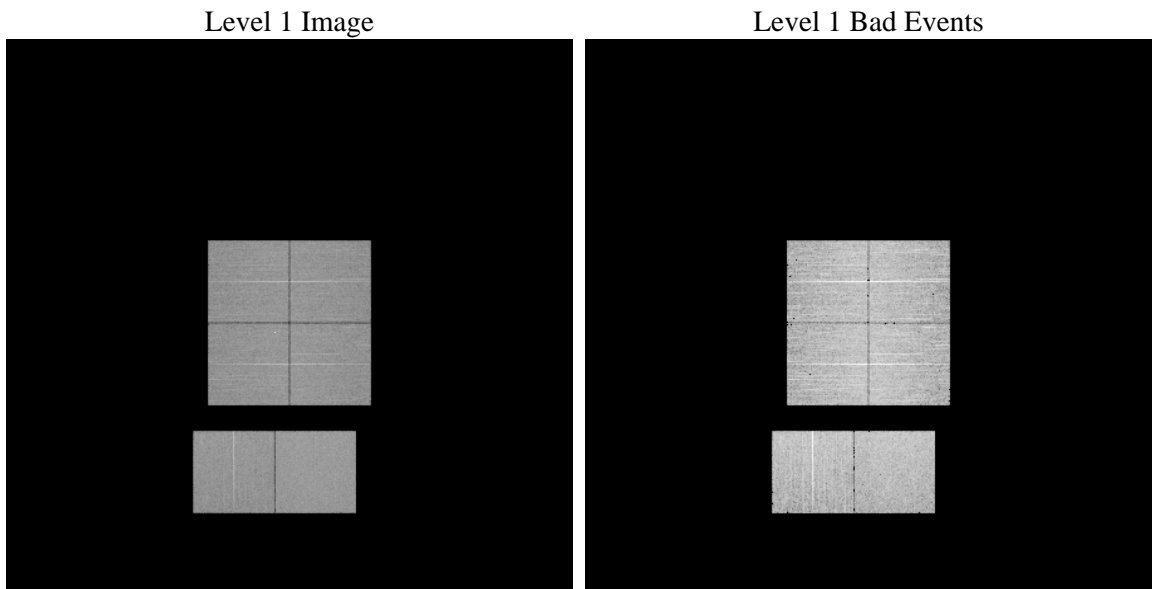
# 1 Front

seq_num	&#160	Sequence number
obs_id	57687	Observation id
title	ACIS-012367 diagnostics	Proposal title
observer	CHANDRA engineering request/realtime commanding	Principal investig
object	&#160	Source name
dtycycle	0	&#160
cycle	P	events from which exps? Prim/Second/Both
ra_targ	0.0	Observer's specified target RA [deg]
dec_targ	0.0	Observer's specified target Dec [deg]
ra_nom	318.99774682085	Nominal RA [deg]
dec_nom	-37.971222930068	Nominal Dec [deg]
roll_nom	55.470912418606	Nominal Roll [deg]
revision	2	Processing version of data
ontime	7318.3999727964	Sum of GTIs [s]
livetime	7225.7299857295	Livetime [s]
ontime0	7315.1589725018	Sum of GTIs [s]
ontime1	7318.3999727964	Sum of GTIs [s]
ontime2	7318.3999727964	Sum of GTIs [s]
ontime3	7318.3999727964	Sum of GTIs [s]
ontime6	7318.3999727964	Sum of GTIs [s]
ontime7	7318.3999727964	Sum of GTIs [s]
l2events	508301	Number of level 2 events

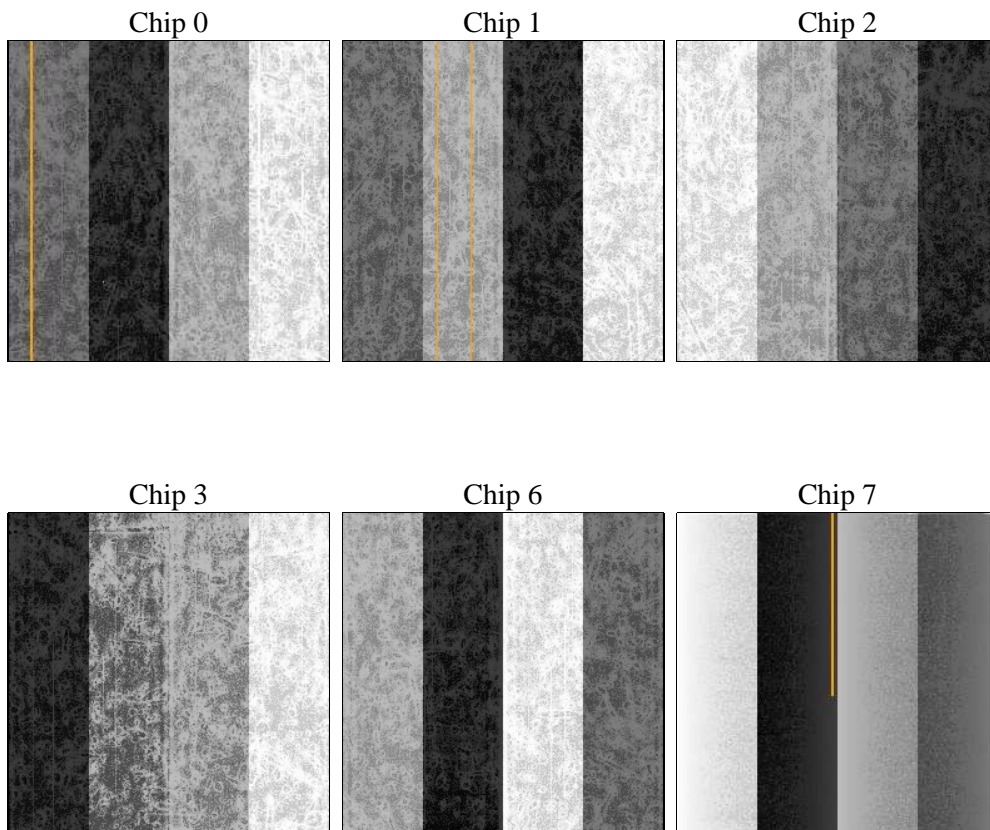
## 2 OBI

### 2.1 OBI

#### 2.1.1 Images



#### 2.1.2 Bias



### 2.1.3 Parameters

obi_num	0	Obi number	sched_exp_time	0.0	[s] Scheduled observation exposure time
ascdsver	8.4.4	Processing system revision	ontime	7318.3999727964	Sum of GTIs [s]
caldbver	4.4.9	&#160	ontime0	7315.1589725018	Sum of GTIs [s]
date	2012-05-18T06:43:31	Date and time of file creation	ontime1	7318.3999727964	Sum of GTIs [s]
revision	2	Processing version of data	ontime2	7318.3999727964	Sum of GTIs [s]
			ontime3	7318.3999727964	Sum of GTIs [s]
			ontime6	7318.3999727964	Sum of GTIs [s]
			ontime7	7318.3999727964	Sum of GTIs [s]
			l1events	904081	Number of level 1 events

### 2.1.4 Events

	ccd 0	ccd 1	ccd 2	ccd 3	ccd 6	ccd 7		ccd 0	ccd 1	ccd 2	ccd 3	ccd 6	ccd 7
level 1 events	143244	142631	147969	149005	149242	171990	grade 0 events	44927	44471	47137	46414	46199	23054
rejected events	59957	59011	63118	64505	62019	57585		31%	31%	31%	31%	30%	13%
rejected %	41%	41%	42%	43%	41%	33%	grade 1 events	329	279	367	334	282	149
								0%	0%	0%	0%	0%	0%
							grade 2 events	14945	15556	14391	14686	15202	24892
								10%	10%	9%	9%	10%	14%
							grade 3 events	5469	5560	5683	5597	5563	10799
								3%	3%	3%	3%	3%	6%
							grade 4 events	5564	5419	5590	5726	5748	11018
								3%	3%	3%	3%	3%	6%
							grade 5 events	3441	3614	3249	3852	3800	9686
								2%	2%	2%	2%	2%	5%
							grade 6 events	12419	12645	12088	12112	14557	44688
								8%	8%	8%	8%	9%	25%
							grade 7 events	56150	55087	59464	60284	57891	47704
								39%	38%	40%	40%	38%	27%

## 2.2 Compared Parameters

Parameter	Planned	Actual	Parameter	Planned	Actual
Instrument	ACIS	ACIS	Obspar format version number	7	7
Detector	ACIS-012367	ACIS-012367	Obspar file type	PREDICTED	ACTUAL
Grating	NONE	NONE	Obspar update status	NONE	UPDATED
Data mode	FAINT	FAINT	On-chip summing requested	N	N
Observation mode	SECONDARY	SECONDARY	Subarray requested	NONE	NONE
[deg] Pointing RA	0	318.9977468208516	Alternating exposures requested	N	N
[deg] Pointing Dec	0	-37.97122293006758	[s] Primary exposure time	3.2	3.2
[deg] Pointing Roll	0.0	55.47091241860571			
[mm] SIM focus pos	-1.429586	-0.7809083437167272			
[mm] SIM defocus	0.1037507710433287	0.7524282956875696			
[mm] SIM translation stage pos	250.455976	250.466033080201			
[mm] SIM translation stage offset	0	-0.01005468664627074			
[s] Observation start time (MET)	332636403.998104	332636402.97309			
Observation start date	2008-07-16T23:00:04	2008-07-16T23:00:02			
[s] Observation end time (MET)	332654929.849011	332654928.824			
Observation end date	2008-07-17T04:08:50	2008-07-17T04:08:48			
Read mode	TIMED	TIMED			

**2.3 Star Slots**

**2.4 FID Slots**

# A Summary

## A.1 Status

V&V Scientist	Beth Sundheim
V&V Date (YYYY-MM-DD)	2012.05.25
V&V Edition	1
V&V Disposition and Status	OK
V&V Charge Time	7.3183999727964

## A.2 Comments