

V&V Reference Report

L2 ASCDS Version : 8.5.1.1

Observation 5827 - L2 Version 3
Chandra X-Ray Center

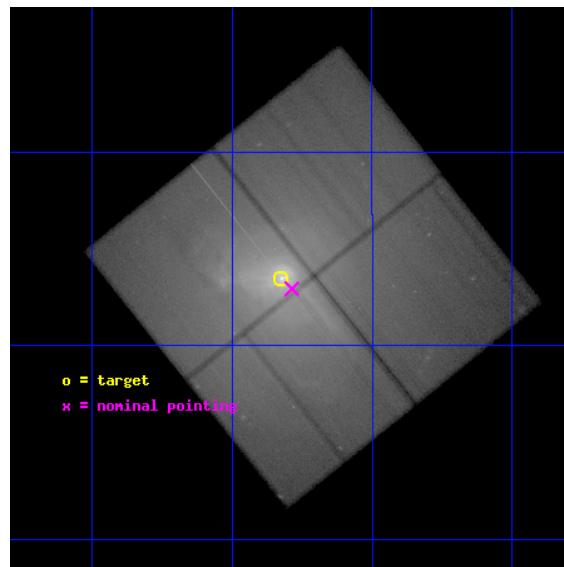
L2 Processing Date : Dec 24 2012

Contents

1	Front	2
2	OBI	3
2.1	OBI	3
2.1.1	Images	3
2.1.2	Bias	3
2.1.3	Parameters	4
2.1.4	Events	4
2.2	Compared Parameters	5
2.3	Aspect	6
2.4	Star Slots	9
2.4.1	Slot 3	9
2.4.2	Slot 4	10
2.4.3	Slot 5	11
2.4.4	Slot 6	12
2.4.5	Slot 7	13
2.5	FID Slots	14
2.5.1	Slot 0	14
2.5.2	Slot 1	15
2.5.3	Slot 2	16
A	Summary	17
A.1	Status	17
A.2	Comments	17

1 Front

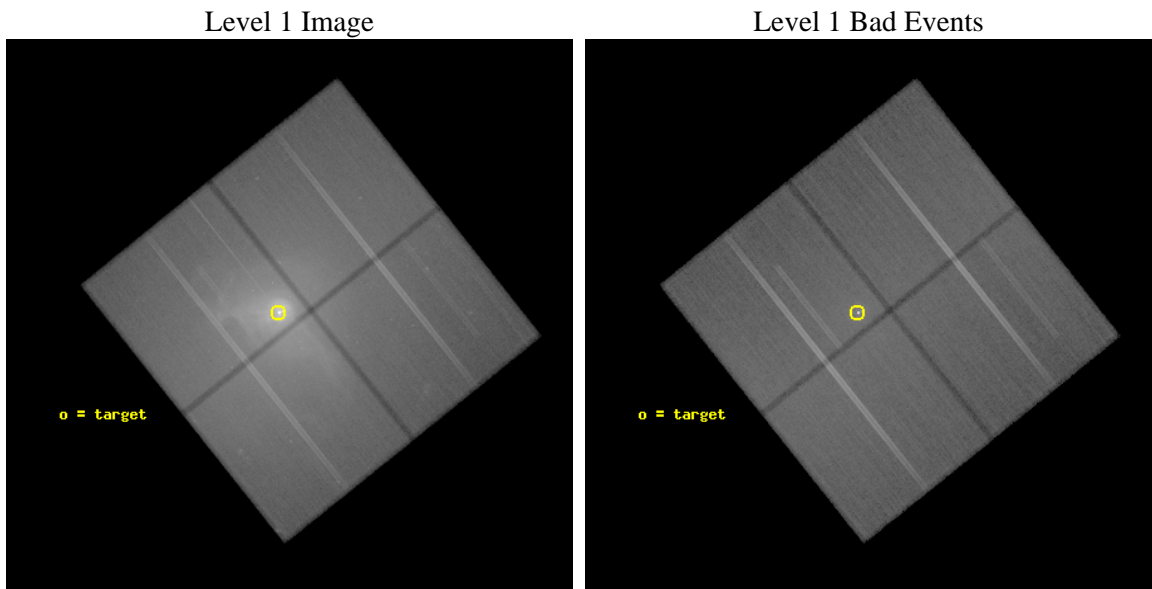
seq_num	800538	Sequence number
obs_id	5827	Observation id
title	The History of AGN Activity in M87 and the Interaction of Nuclear Outbursts with the Surrounding Atmosphere	Proposal title
observer	Dr. william forman	Principal investigator
object	M87	Source name
dtcycle	0	
cycle	P	events from which exps? Prim/Second/Both
ra_targ	187.70625	Observer's specified target RA [deg]
dec_targ	12.391111	Observer's specified target Dec [deg]
ra_nom	187.69671955021	Nominal RA [deg]
dec_nom	12.382401108742	Nominal Dec [deg]
roll_nom	231.39567733106	Nominal Roll [deg]
revision	3	Processing version of data
ontime	158270.21275413	Sum of GTIs [s]
livetime	156202.29590766	Livetime [s]
ontime0	158267.07175383	Sum of GTIs [s]
ontime1	158276.49483407	Sum of GTIs [s]
ontime2	158260.78982329	Sum of GTIs [s]
ontime3	158270.21275413	Sum of GTIs [s]
l2events	5842946	Number of level 2 events



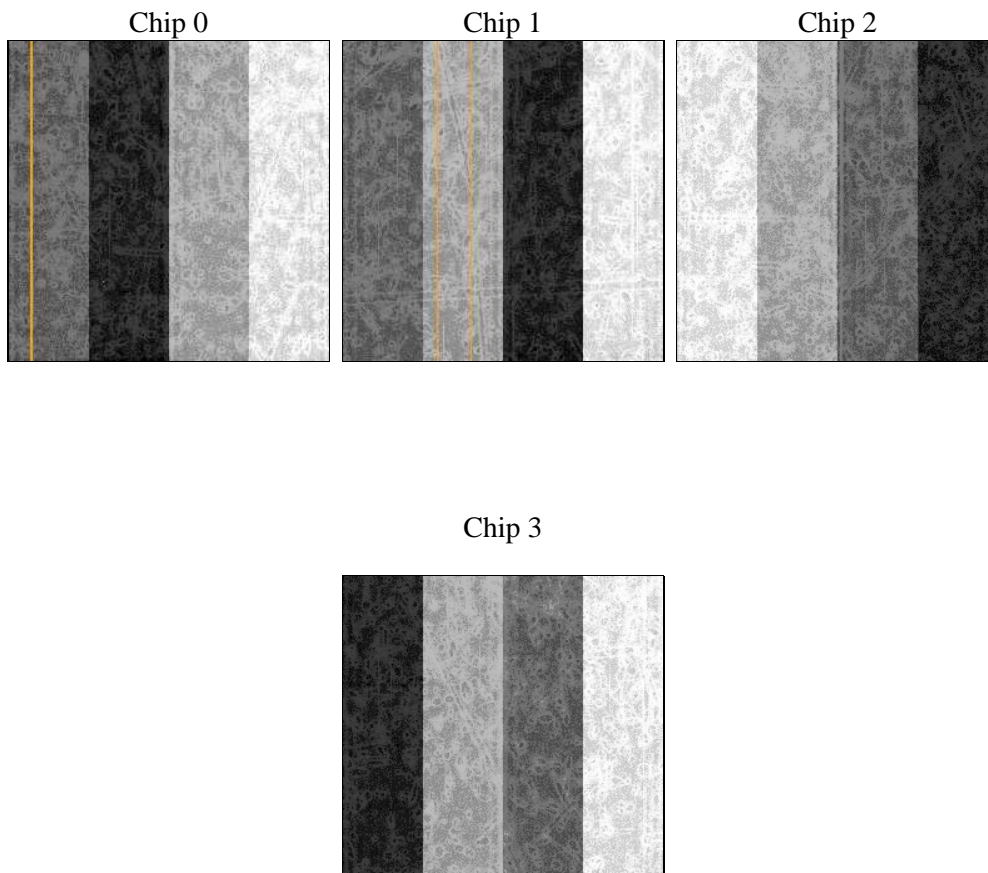
2 OBI

2.1 OBI

2.1.1 Images



2.1.2 Bias



2.1.3 Parameters

obi_num	0	Obi number	sched_exp_time	158116.189000	[s] Scheduled observation exposure time
ascdsver	8.5.1.1	Processing system revision	ontime	158270.21275413	Sum of GTIs [s]
caldbver	4.5.5	 	ontime0	158267.07175383	Sum of GTIs [s]
date	2012-12-23T13:09:30	Date and time of file creation	ontime1	158276.49483407	Sum of GTIs [s]
revision	3	Processing version of data	ontime2	158260.78982329	Sum of GTIs [s]
			ontime3	158270.21275413	Sum of GTIs [s]
			l1events	10051961	Number of level 1 events

2.1.4 Events

	ccd 0	ccd 1	ccd 2	ccd 3
level 1 events	1736075	2051442	2568117	3696327
rejected events	879911	889775	1042581	1038117
rejected %	50%	43%	40%	28%

	ccd 0	ccd 1	ccd 2	ccd 3
grade 0 events	666143	916908	1244020	2214549
	38%	44%	48%	59%
grade 1 events	3439	4213	7427	20858
	0%	0%	0%	0%
grade 2 events	95890	124139	149116	240909
	5%	6%	5%	6%
grade 3 events	32056	40927	46935	73520
	1%	1%	1%	1%
grade 4 events	30825	39712	48017	74780
	1%	1%	1%	2%
grade 5 events	38421	41890	38456	55757
	2%	2%	1%	1%
grade 6 events	32848	41635	40231	57205
	1%	2%	1%	1%
grade 7 events	836453	842018	993915	958749
	48%	41%	38%	25%

2.2 Compared Parameters

Parameter	Planned	Actual	Parameter	Planned	Actual
Instrument	ACIS	ACIS	Obspar format version number	7	7
Detector	ACIS-0123	ACIS-0123	Obspar file type	PREDICTED	ACTUAL
Grating	NONE	NONE	Obspar update status	NONE	UPDATED
Data mode	VFAINT	VFAINT	Number of optional ACIS chips dropped	0	0
Observation mode	POINTING	POINTING	On-chip summing requested	N	N
[deg] Pointing RA	187.700809	187.696719550207	Subarray requested	NONE	NONE
[deg] Pointing Dec	12.409503	12.38240110874158	Alternating exposures requested	N	N
[deg] Pointing Roll	231.186118	231.3956773310643	[s] Primary exposure time	0.000000	3.1
[mm] SIM focus pos	-0.782348	-0.7809083437167272			
[mm] SIM defocus	0	0.001439871863259334			
[mm] SIM translation stage pos	-231.592463	-231.5960967419932			
[mm] SIM translation stage offset	-2	-1.996356260936523			
[s] Observation start time (MET)	231716194.184000	231714855.66333			
Observation start date	2005-05-05T21:35:30	2005-05-05T21:14:15			
[s] Observation end time (MET)	231874310.184000	231874535.2956			
Observation end date	2005-05-07T17:30:46	2005-05-07T17:35:35			
Read mode	TIMED	TIMED			

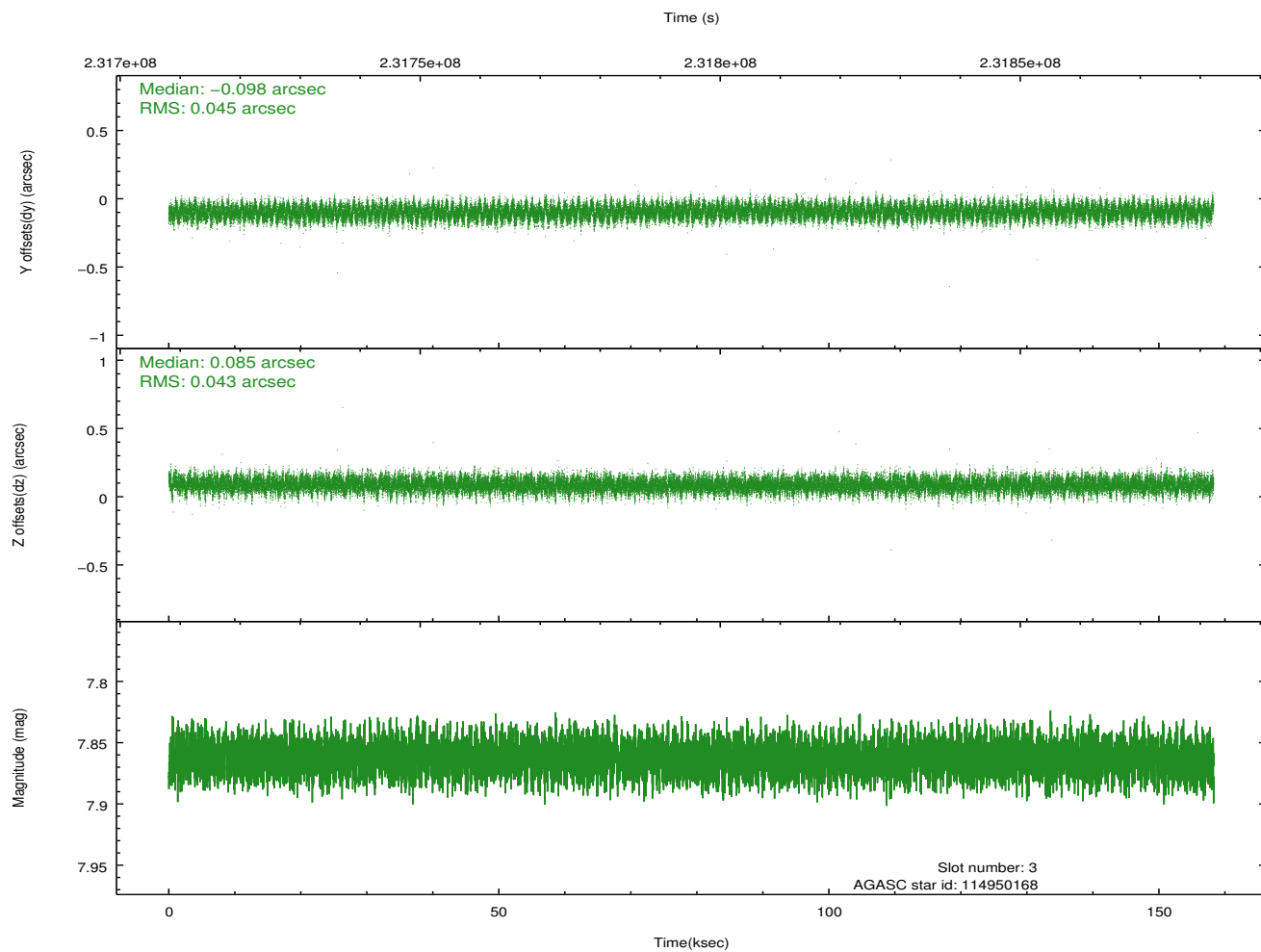
2.3 Aspect

Slot Statistics

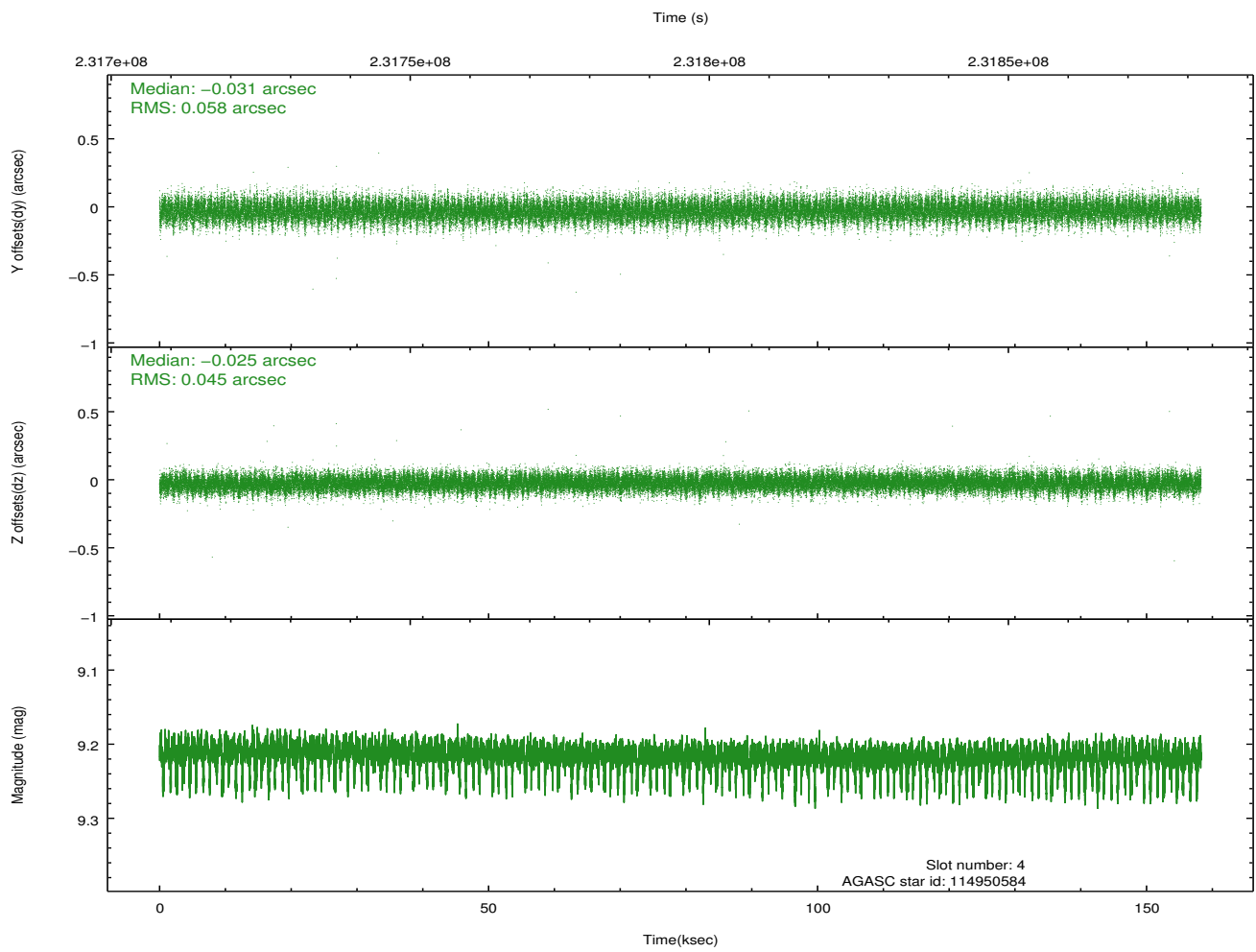
slot	status	id	mag	n_pts	med_dy	med_dz	dr1	dr2	ra	dec	mean_y	mean_z
0	FID	ACIS-I-1	7.24	38608	0.046	-0.026	0.007	0.011	0.000000	0.000000	932.18	-874.73
1	FID	ACIS-I-5	7.23	38610	-0.203	0.050	0.006	0.011	0.000000	0.000000	-1816.18	1022.97
2	FID	ACIS-I-6	7.25	38609	0.066	0.047	0.007	0.013	0.000000	0.000000	397.94	1667.28
3	GUIDE	114950168	7.86	77205	-0.098	0.085	0.067	0.106	187.143398	12.117441	2047.89	-870.59
4	GUIDE	114950584	9.21	77161	-0.031	-0.025	0.078	0.128	187.487323	11.827248	2104.96	727.66
5	GUIDE	114952824	8.57	77191	-0.017	0.109	0.064	0.103	187.703904	12.486727	-222.88	-165.84
6	GUIDE	114954440	9.20	77174	0.120	-0.072	0.103	0.167	186.915066	12.219118	2264.27	-1726.46
7	GUIDE	114955056	8.32	77203	0.030	-0.095	0.065	0.105	187.914001	12.127854	319.80	1219.87

2.4 Star Slots

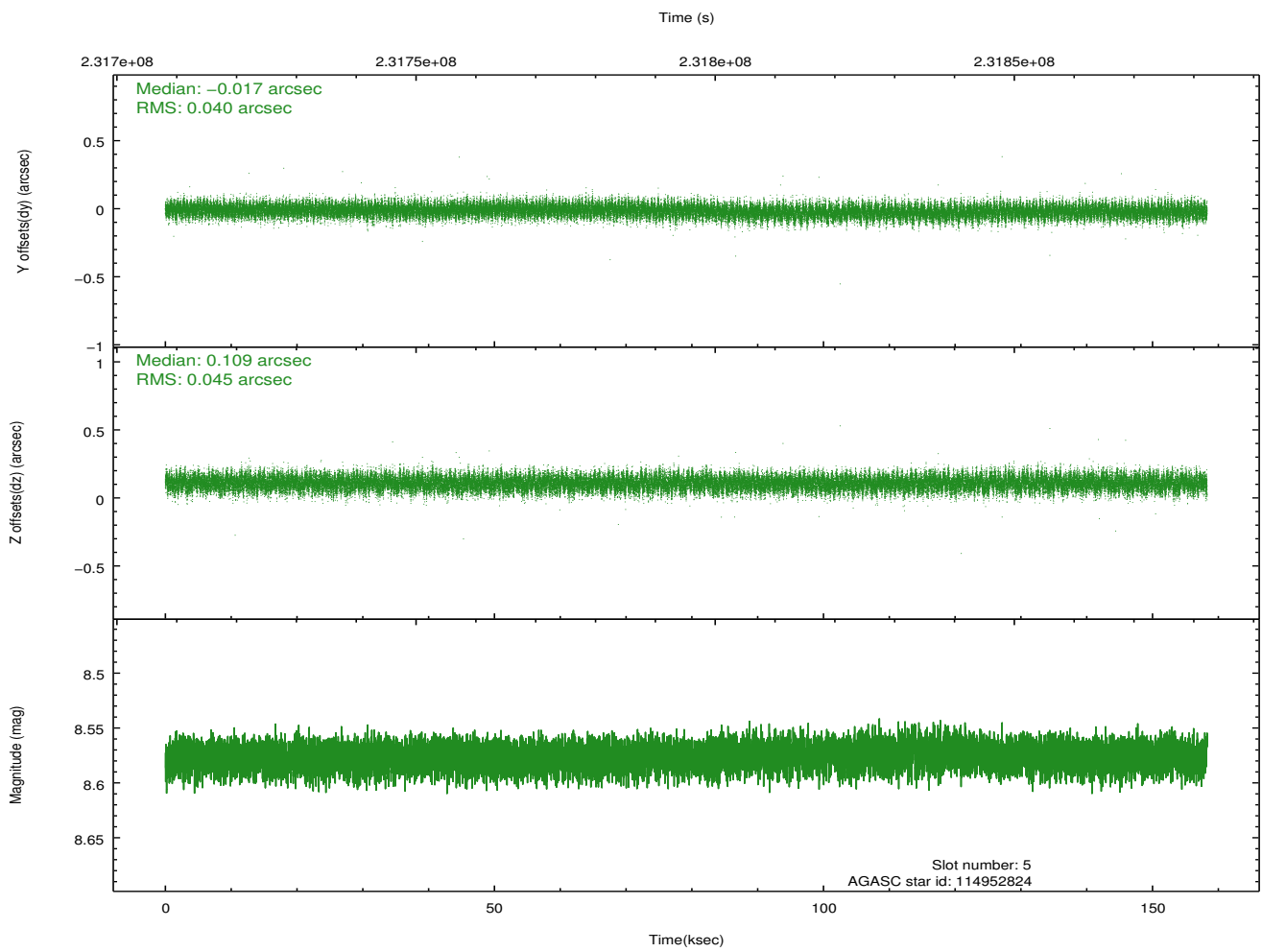
2.4.1 Slot 3



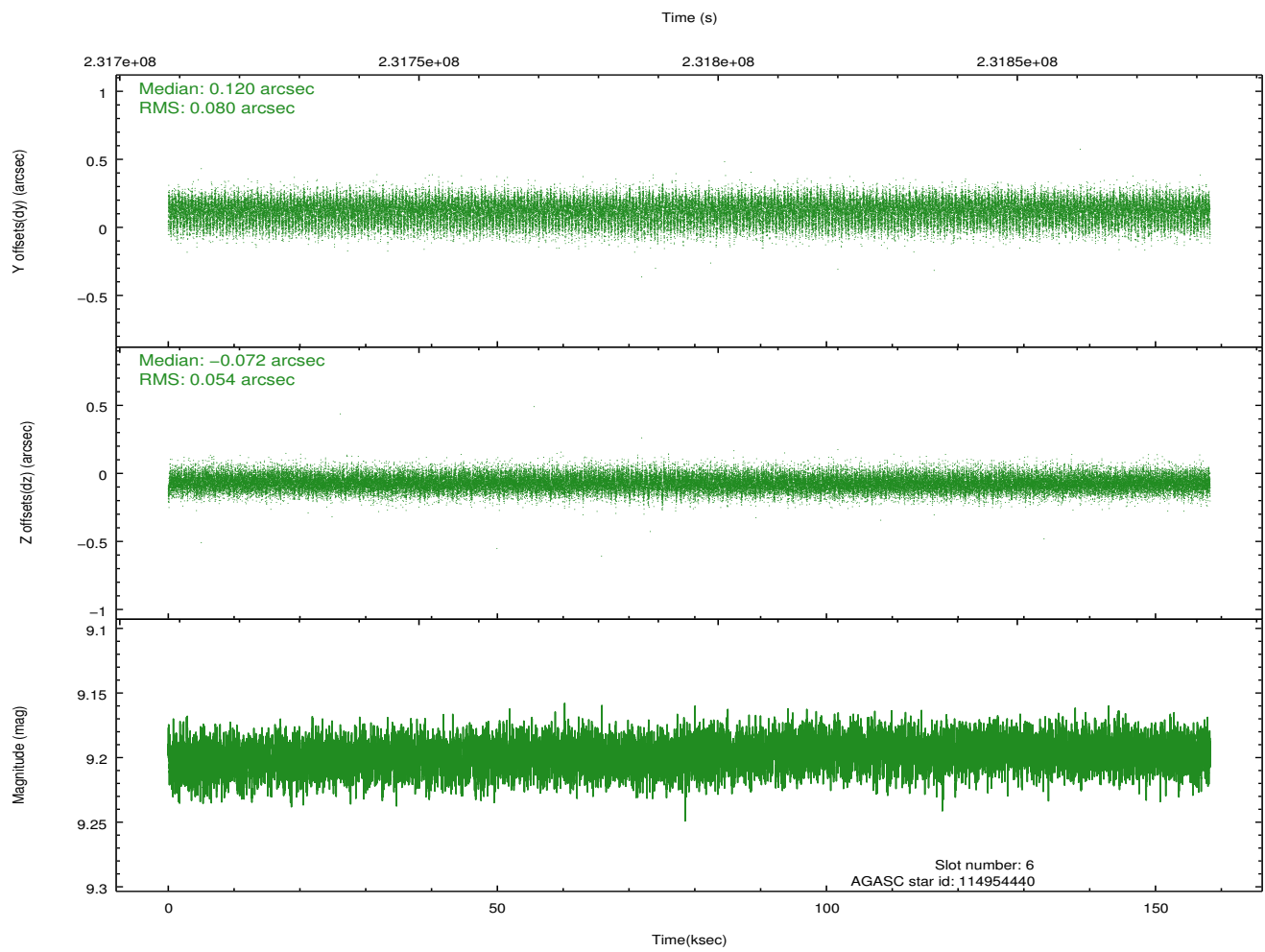
2.4.2 Slot 4



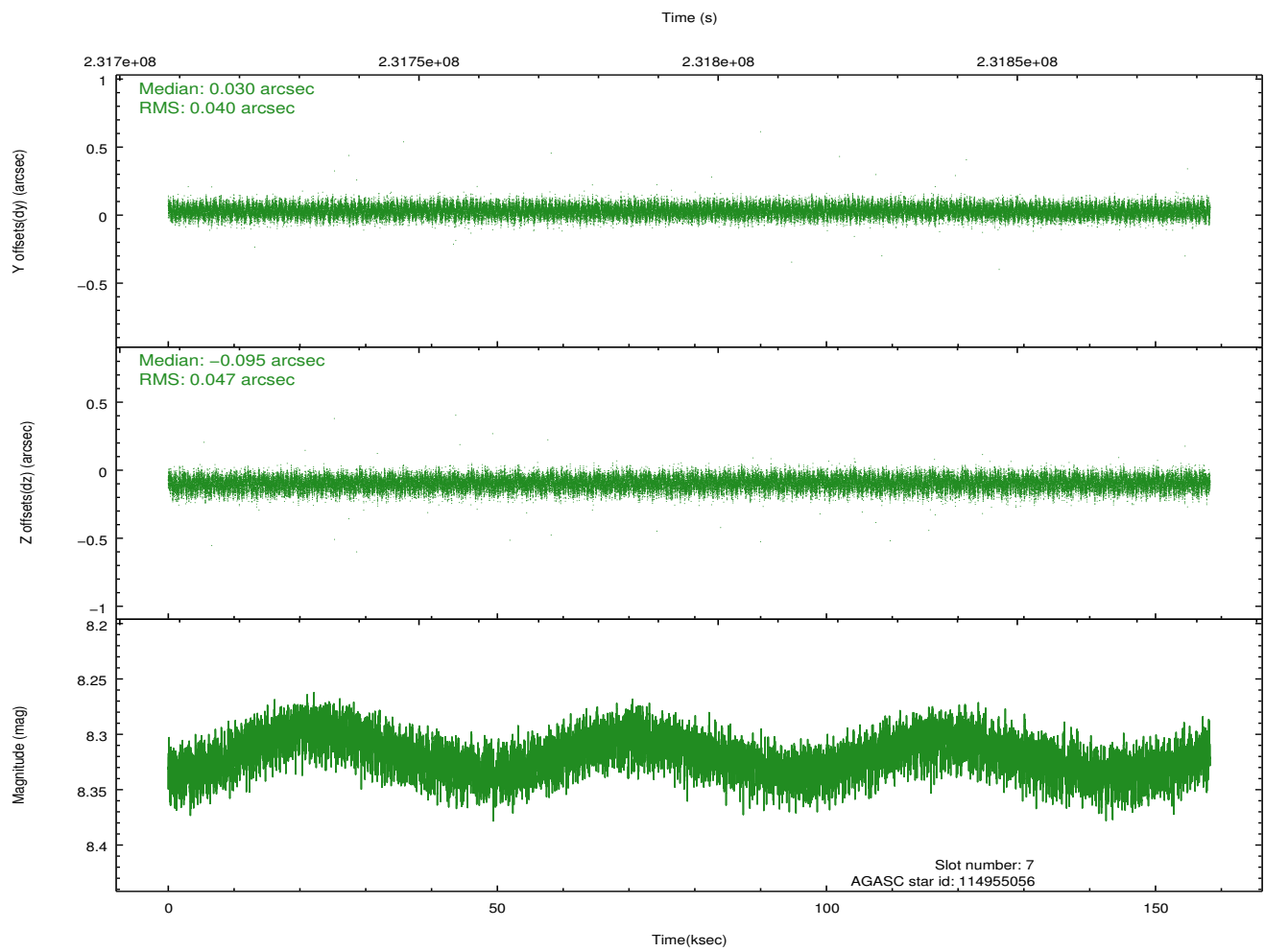
2.4.3 Slot 5



2.4.4 Slot 6

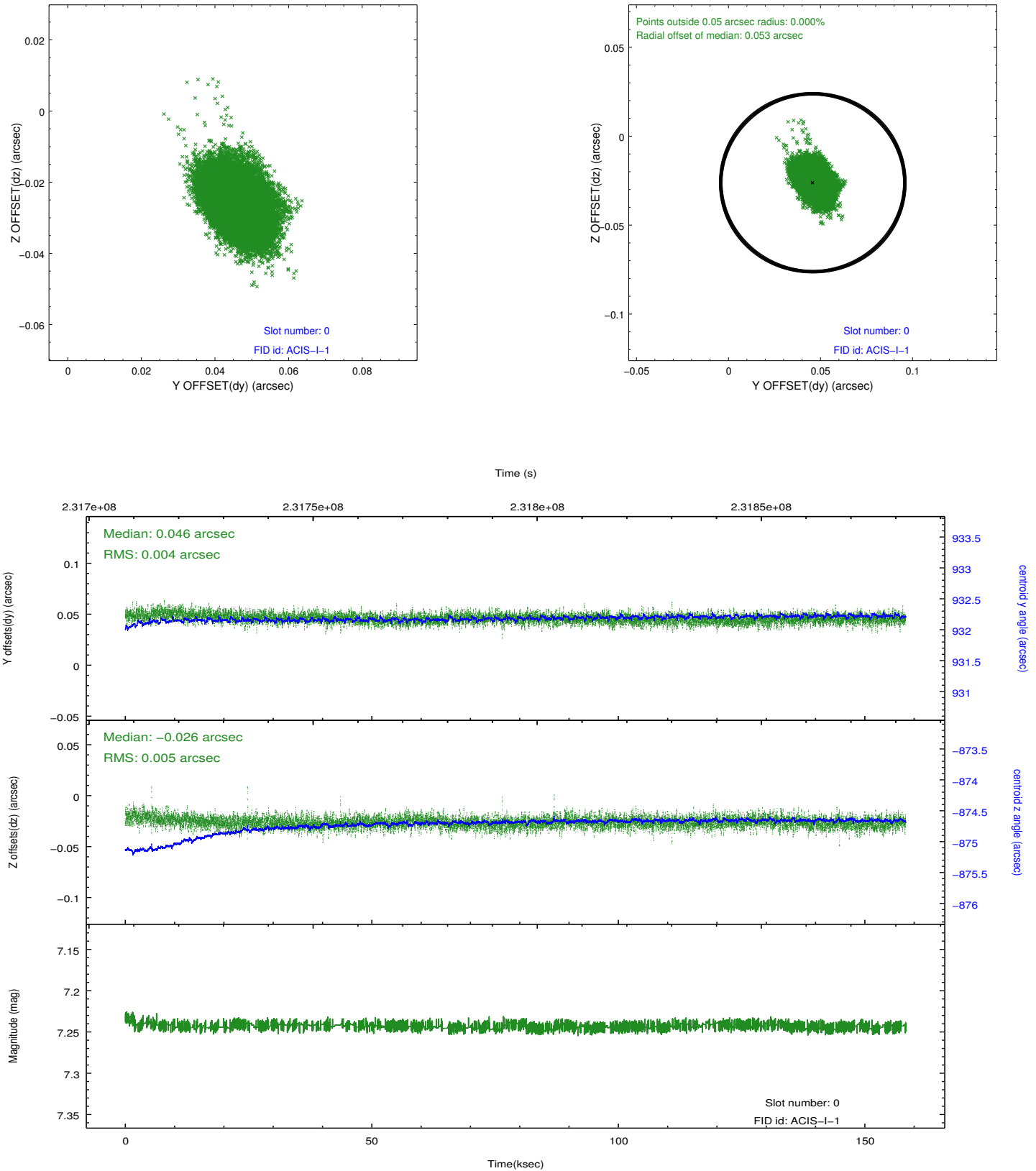


2.4.5 Slot 7

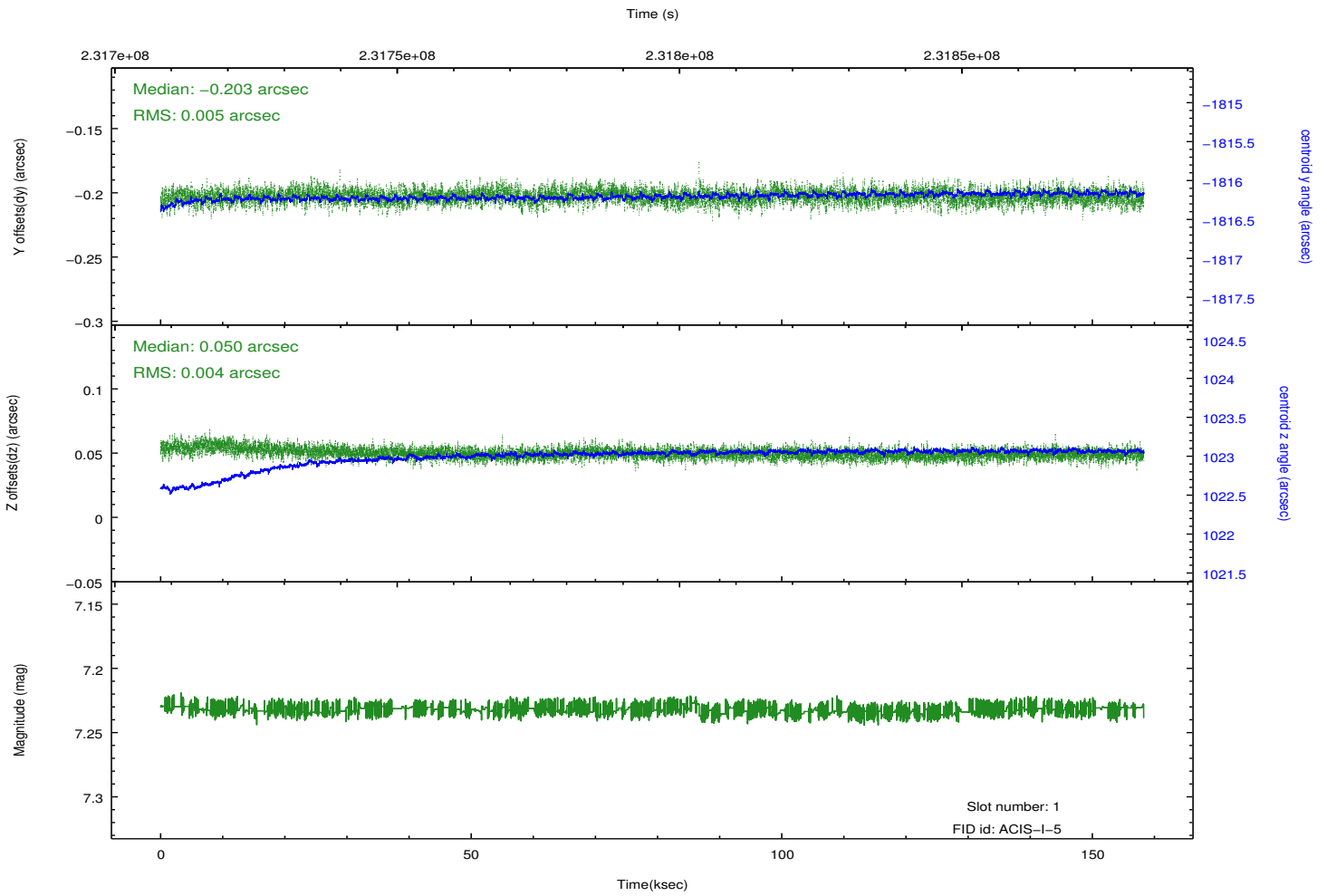
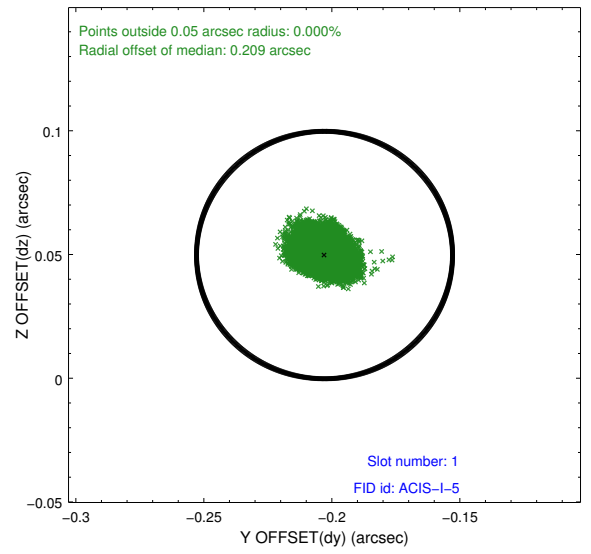
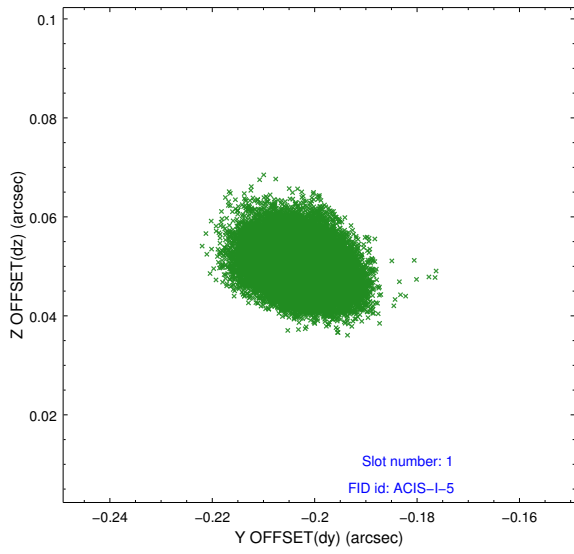


2.5 FID Slots

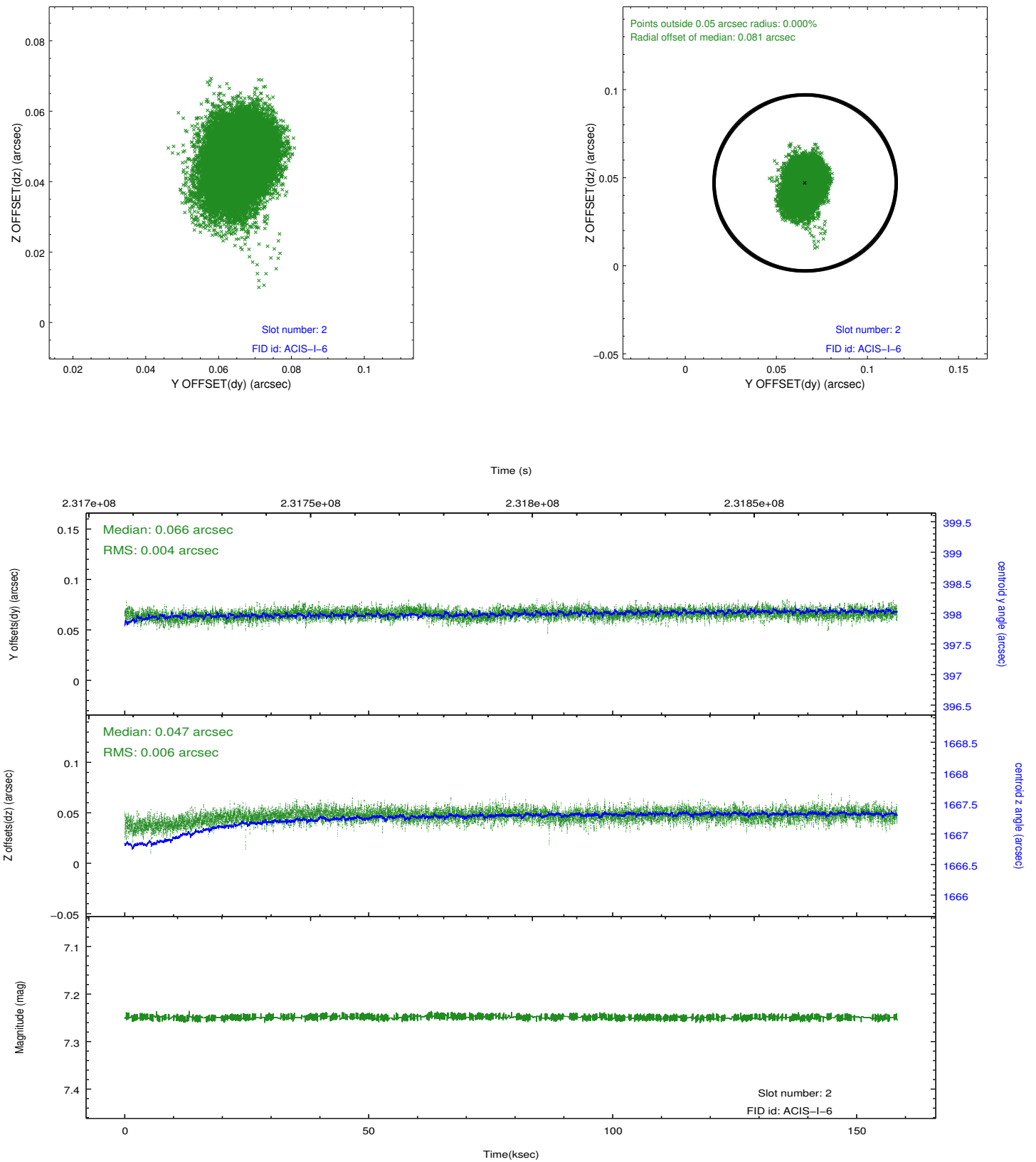
2.5.1 Slot 0



2.5.2 Slot 1



2.5.3 Slot 2



A Summary

A.1 Status

V&V Scientist	Jen Lauer
V&V Date (YYYY-MM-DD)	2013.01.16
V&V Edition	1
V&V Disposition and Status	OK
V&V Charge Time	158.2702

A.2 Comments