

V&V Reference Report

L2 ASCDS Version : 8.4.3

Observation 5837 - L2 Version 2
Chandra X-Ray Center

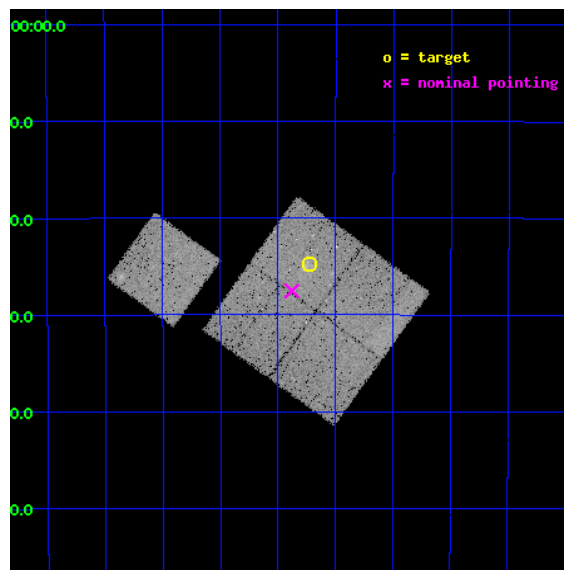
L2 Processing Date : Mar 24 2012

Contents

1	Front	2
2	OBI	3
2.1	OBI	3
2.1.1	Images	3
2.1.2	Bias	3
2.1.3	Parameters	4
2.1.4	Events	4
2.2	Compared Parameters	5
2.3	Aspect	6
2.4	Star Slots	9
2.4.1	Slot 3	9
2.4.2	Slot 4	10
2.4.3	Slot 5	11
2.4.4	Slot 6	12
2.4.5	Slot 7	13
2.5	FID Slots	14
2.5.1	Slot 0	14
2.5.2	Slot 1	15
2.5.3	Slot 2	16
A	Summary	17
A.1	Status	17
A.2	Comments	17

1 Front

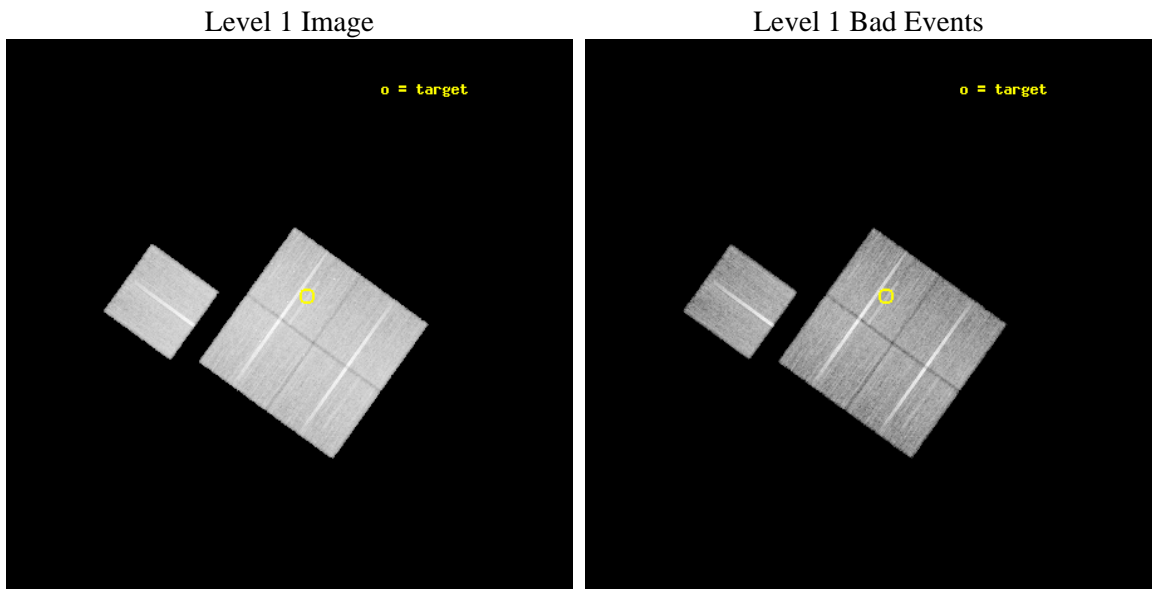
seq_num	800546	Sequence number
obs_id	5837	Observation id
title	Supplement to Chandra observations of high-redshift clusters of galaxies from the 400 Square Degree ROSAT PSPC survey	Proposal title
observer	Dr Stephen Murray	Principal investigator
object	cl0522-3624	Source name
dtcycle	0	
cycle	P	events from which exps? Prim/Second/Both
ra_targ	80.5575	Observer's specified target RA [deg]
dec_targ	-36.413611	Observer's specified target Dec [deg]
ra_nom	80.594891882888	Nominal RA [deg]
dec_nom	-36.458863865996	Nominal Dec [deg]
roll_nom	305.72061921446	Nominal Roll [deg]
revision	2	Processing version of data
ontime	28045.58748734	Sum of GTIs [s]
livetime	27679.151239957	Livetime [s]
ontime0	28045.464347392	Sum of GTIs [s]
ontime1	28042.364397258	Sum of GTIs [s]
ontime2	28045.546437413	Sum of GTIs [s]
ontime3	28045.58748734	Sum of GTIs [s]
ontime6	28045.423327267	Sum of GTIs [s]
l2events	83835	Number of level 2 events



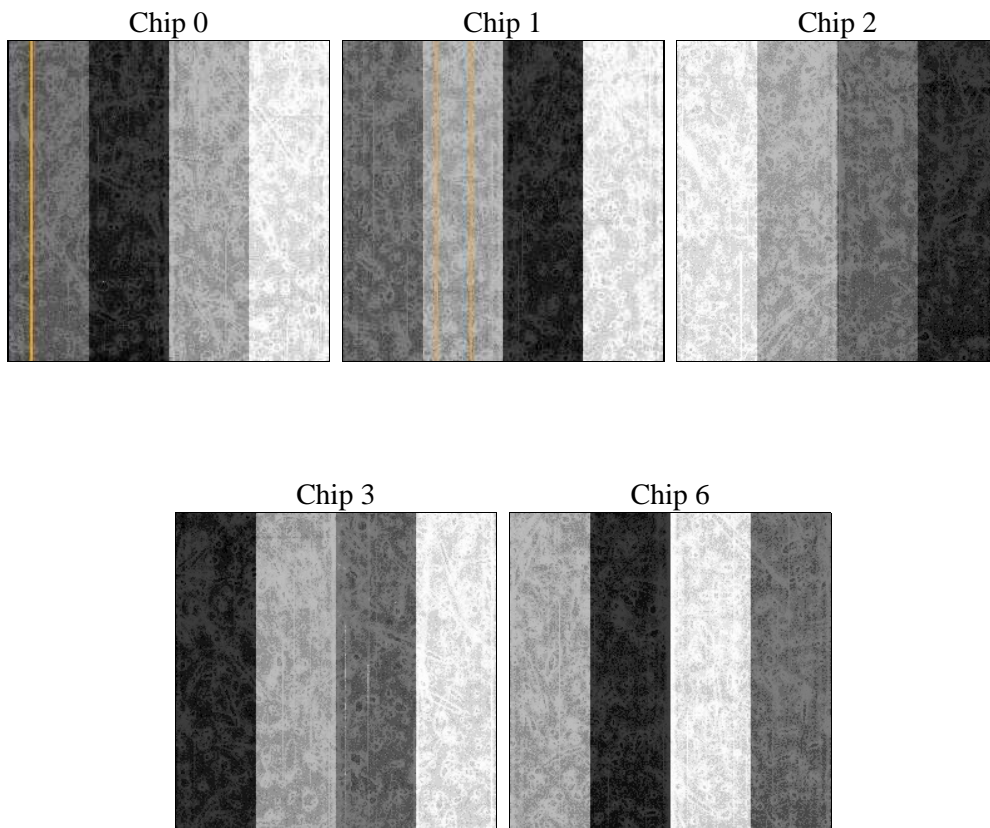
2 OBI

2.1 OBI

2.1.1 Images



2.1.2 Bias



2.1.3 Parameters

obi_num	0	Obi number	sched_exp_time	28000.000000	[s] Scheduled observation exposure time
ascdsver	8.4.3.1	Processing system revision	ontime	28045.58748734	Sum of GTIs [s]
caldsver	4.4.8	 	ontime0	28045.464347392	Sum of GTIs [s]
date	2012-03-25T00:17:49	Date and time of file creation	ontime1	28042.364397258	Sum of GTIs [s]
revision	2	Processing version of data	ontime2	28045.546437413	Sum of GTIs [s]
			ontime3	28045.58748734	Sum of GTIs [s]
			ontime6	28045.423327267	Sum of GTIs [s]
			l1events	975966	Number of level 1 events

2.1.4 Events

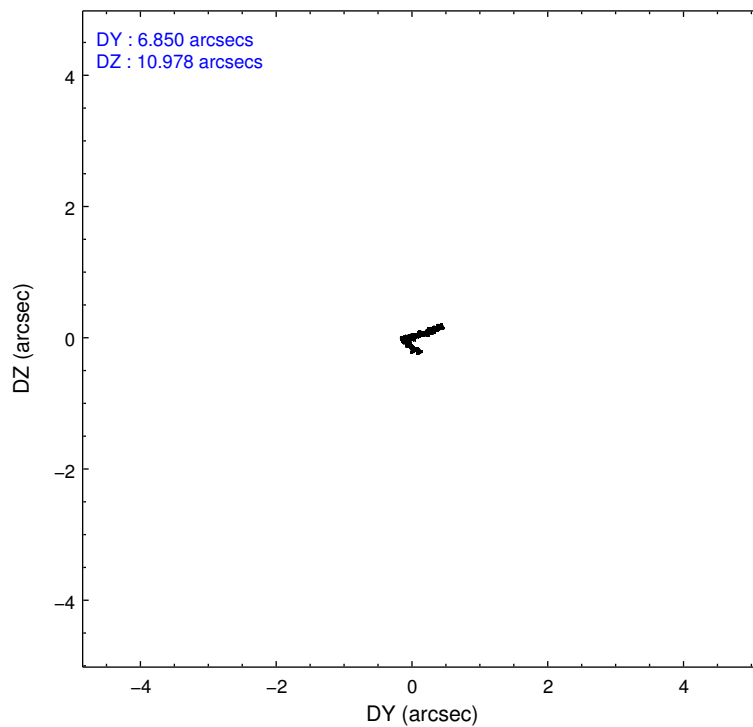
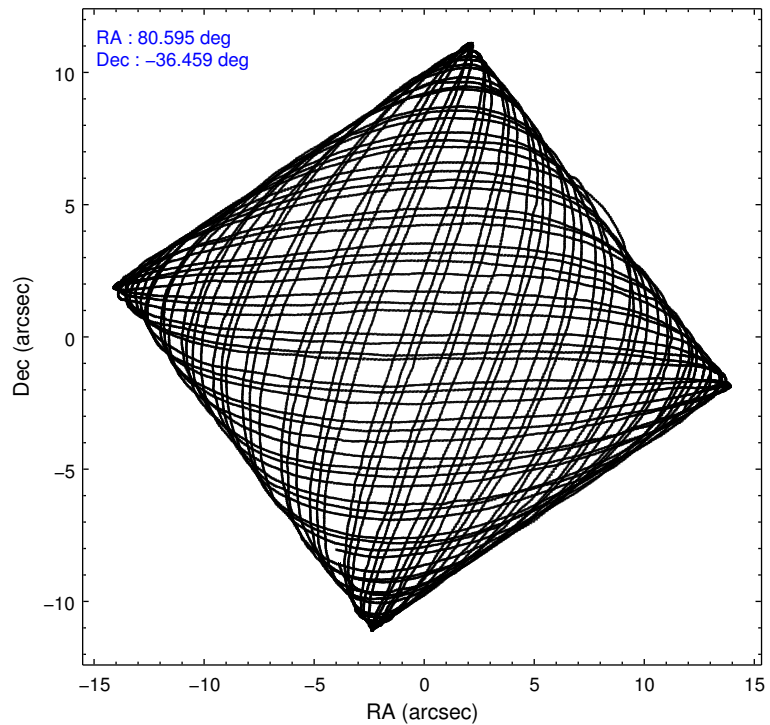
	ccd 0	ccd 1	ccd 2	ccd 3	ccd 6
level 1 events	187653	184634	206221	197493	199965
rejected events	168275	162919	186686	177347	179685
rejected %	89%	88%	90%	89%	89%

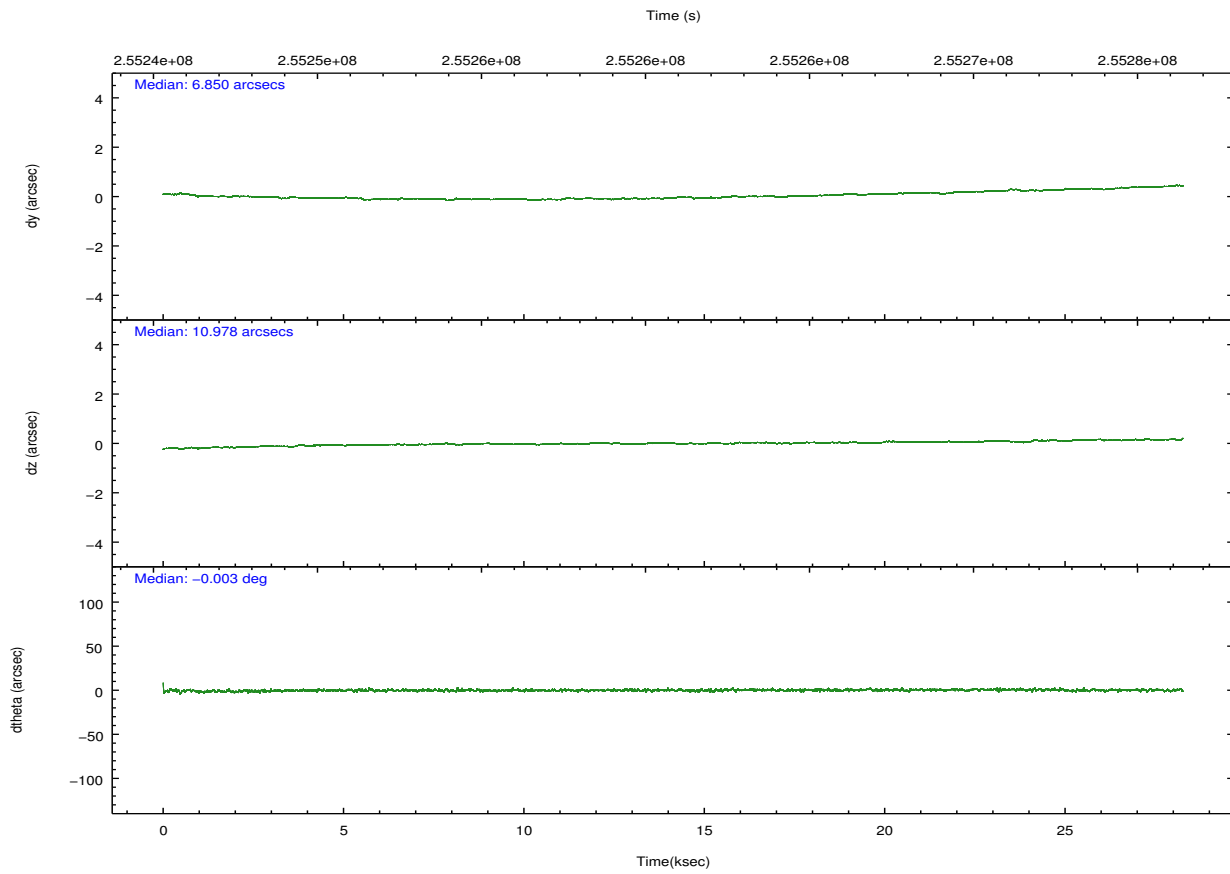
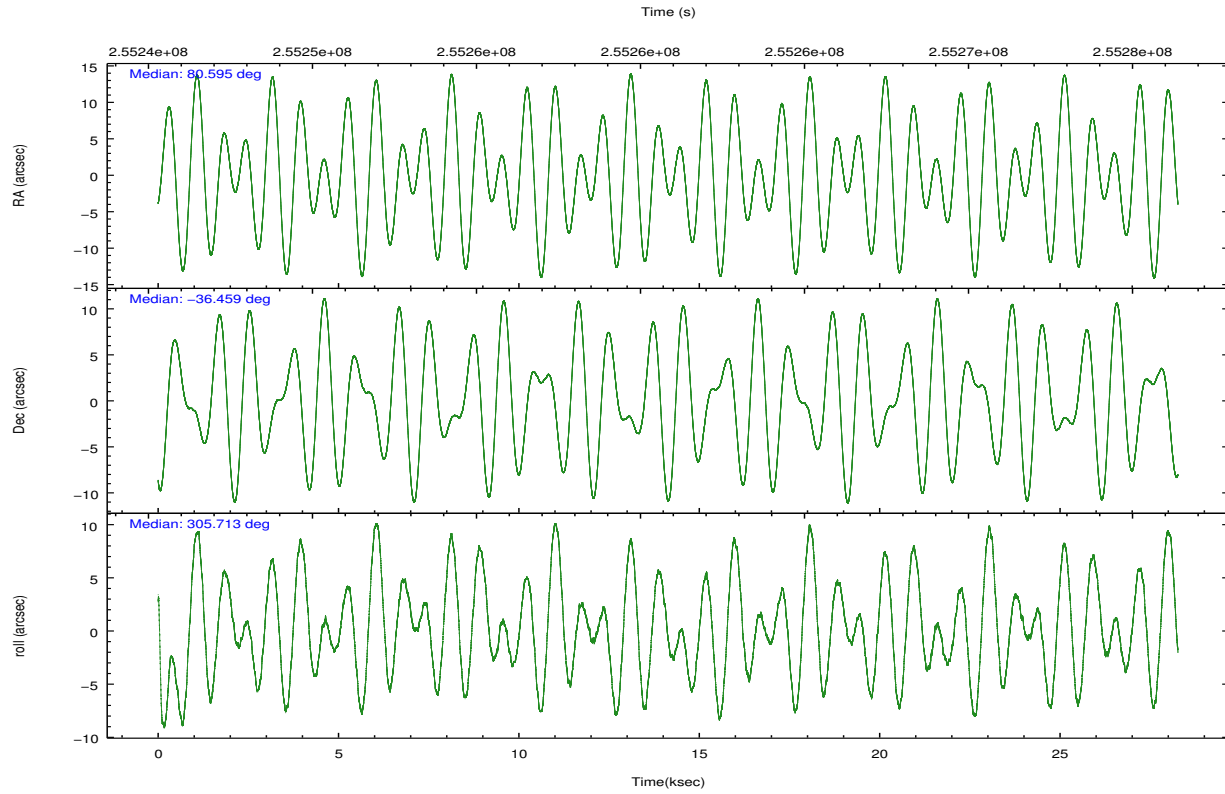
	ccd 0	ccd 1	ccd 2	ccd 3	ccd 6
grade 0 events	6650	7631	7197	7867	7174
	3%	4%	3%	3%	3%
grade 1 events	116	99	101	103	75
	0%	0%	0%	0%	0%
grade 2 events	4617	4744	4551	4165	4304
	2%	2%	2%	2%	2%
grade 3 events	2223	2449	2131	2180	2273
	1%	1%	1%	1%	1%
grade 4 events	2184	2418	2207	2161	2211
	1%	1%	1%	1%	1%
grade 5 events	6637	7320	6334	7797	7705
	3%	3%	3%	3%	3%
grade 6 events	3707	4479	3451	3777	4320
	1%	2%	1%	1%	2%
grade 7 events	161519	155494	180249	169443	171903
	86%	84%	87%	85%	85%

2.2 Compared Parameters

Parameter	Planned	Actual	Parameter	Planned	Actual
Instrument	ACIS	ACIS	Obspar format version number	7	7
Detector	ACIS-01236	ACIS-01236	Obspar file type	PREDICTED	ACTUAL
Grating	NONE	NONE	Obspar update status	NONE	UPDATED
Data mode	VFAINT	VFAINT	Number of optional ACIS chips dropped	0	0
Observation mode	POINTING	POINTING	On-chip summing requested	N	N
[deg] Pointing RA	80.563768	80.59489188288778	Subarray requested	NONE	NONE
[deg] Pointing Dec	-36.447680	-36.45886386599603	Alternating exposures requested	N	N
[deg] Pointing Roll	305.493443	305.7206192144581	[s] Primary exposure time	0.000000	3.1
[mm] SIM focus pos	-0.782348	-0.7809083437167272			
[mm] SIM defocus	0	0.001439871863259334			
[mm] SIM translation stage pos	-225.840463	-225.8433433320239			
[mm] SIM translation stage offset	-7.752	-7.749109670905796			
[s] Observation start time (MET)	255246971.184000	255246001.09505			
Observation start date	2006-02-02T05:55:06	2006-02-02T05:40:01			
[s] Observation end time (MET)	255274971.184000	255275838.84644			
Observation end date	2006-02-02T13:41:46	2006-02-02T13:57:18			
Read mode	TIMED	TIMED			

2.3 Aspect



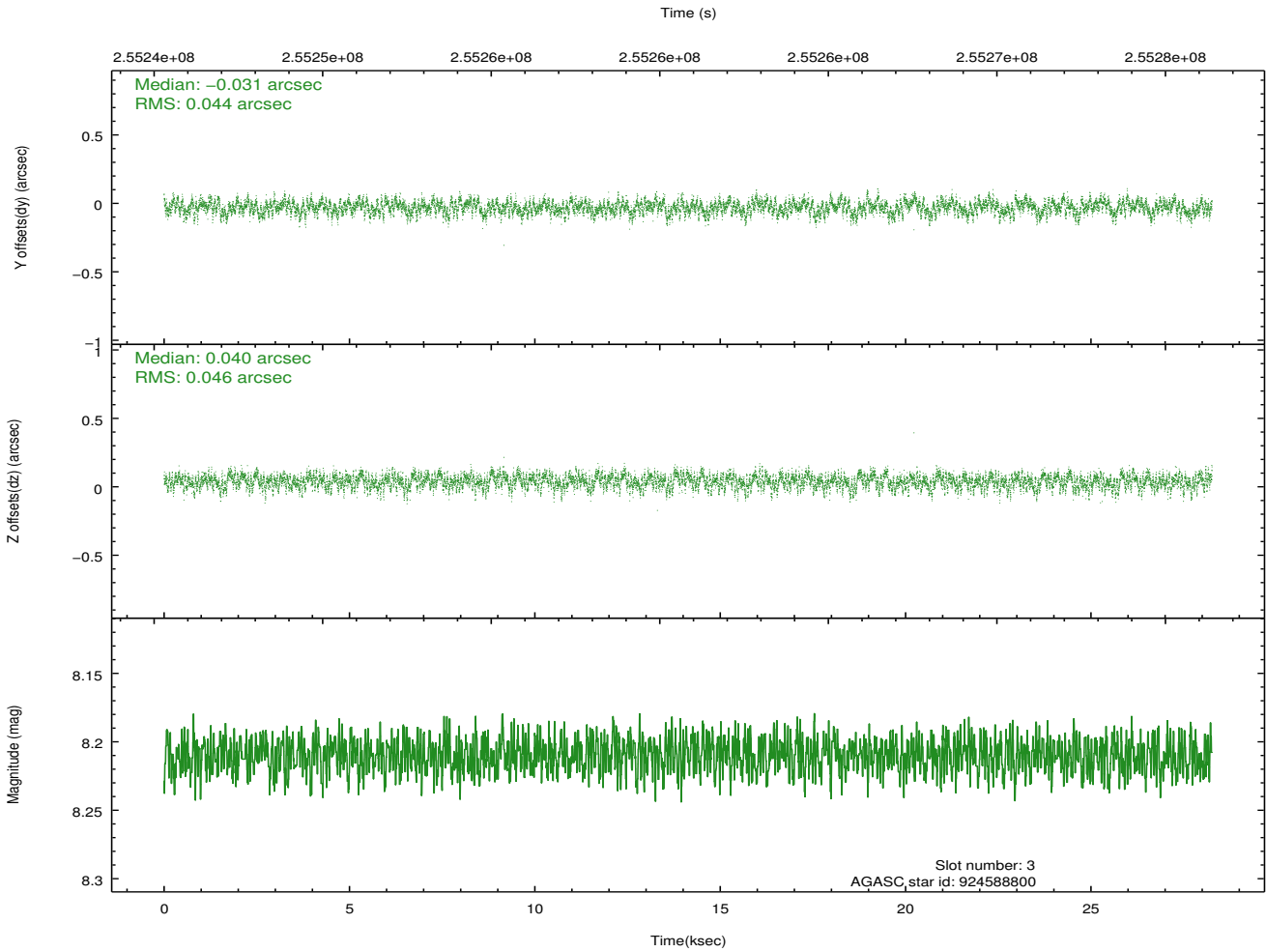
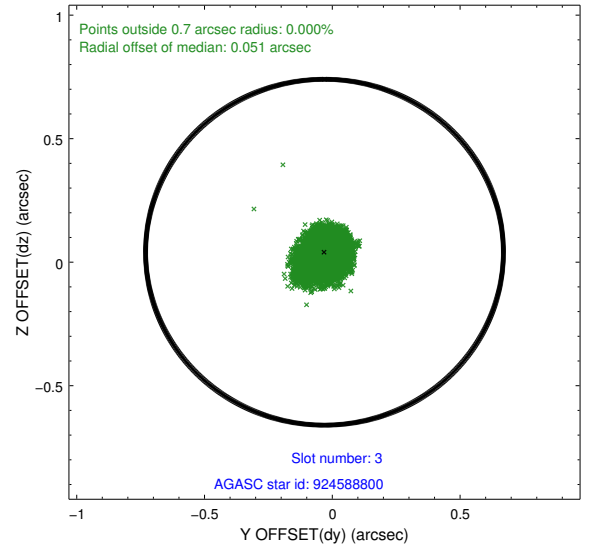
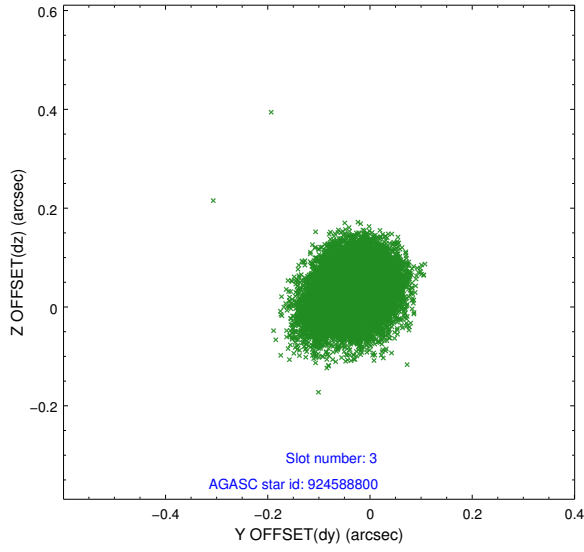


Slot Statistics

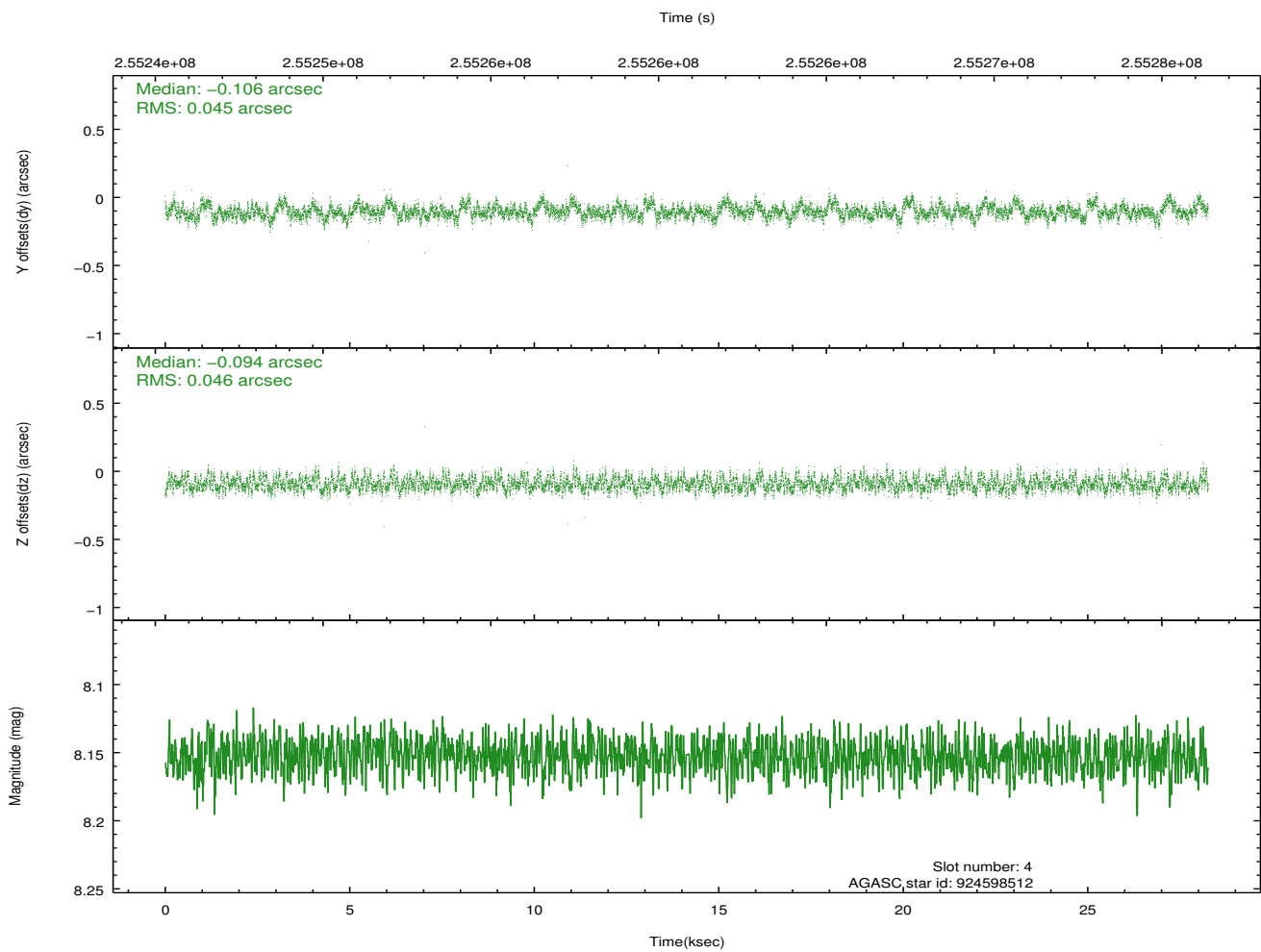
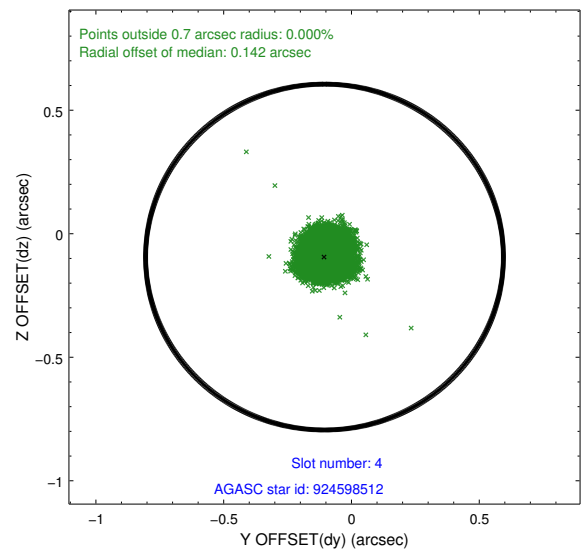
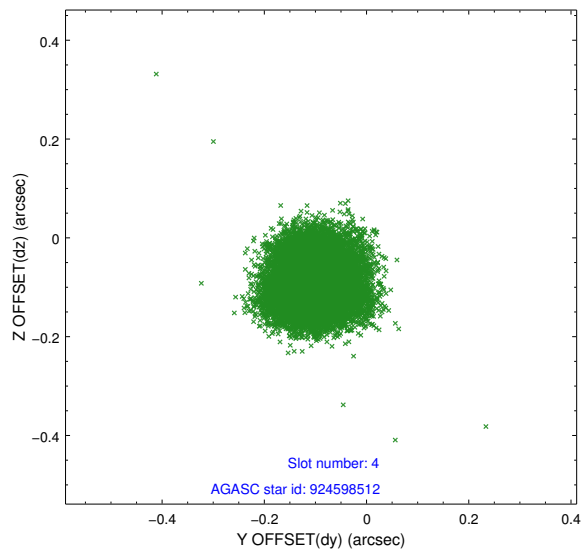
slot	status	id	mag	n_pts	med_dy	med_dz	dr1	dr2	ra	dec	mean_y	mean_z
0	FID	ACIS-I-1	7.23	6892	0.080	-0.146	0.010	0.017	0.000000	0.000000	932.74	-993.68
1	FID	ACIS-I-2	7.18	6893	-0.170	0.073	0.008	0.015	0.000000	0.000000	-761.95	-998.97
2	FID	ACIS-I-4	7.13	6894	-0.008	0.139	0.010	0.025	0.000000	0.000000	2152.03	907.34
3	GUIDE	924588800	8.21	13784	-0.031	0.040	0.067	0.109	79.855531	-36.745092	-307.86	-2289.43
4	GUIDE	924598512	8.15	13783	-0.106	-0.094	0.069	0.110	80.814637	-36.371896	200.84	749.74
5	GUIDE	926286400	9.65	13782	-0.185	-0.037	0.110	0.177	81.130407	-36.186437	193.93	1883.76
6	GUIDE	926287064	10.03	13773	0.030	-0.077	0.119	0.196	81.023237	-36.003845	-521.41	2015.33
7	GUIDE	926294712	7.70	13783	0.286	0.168	0.054	0.102	81.686793	-36.584850	2302.43	2346.11

2.4 Star Slots

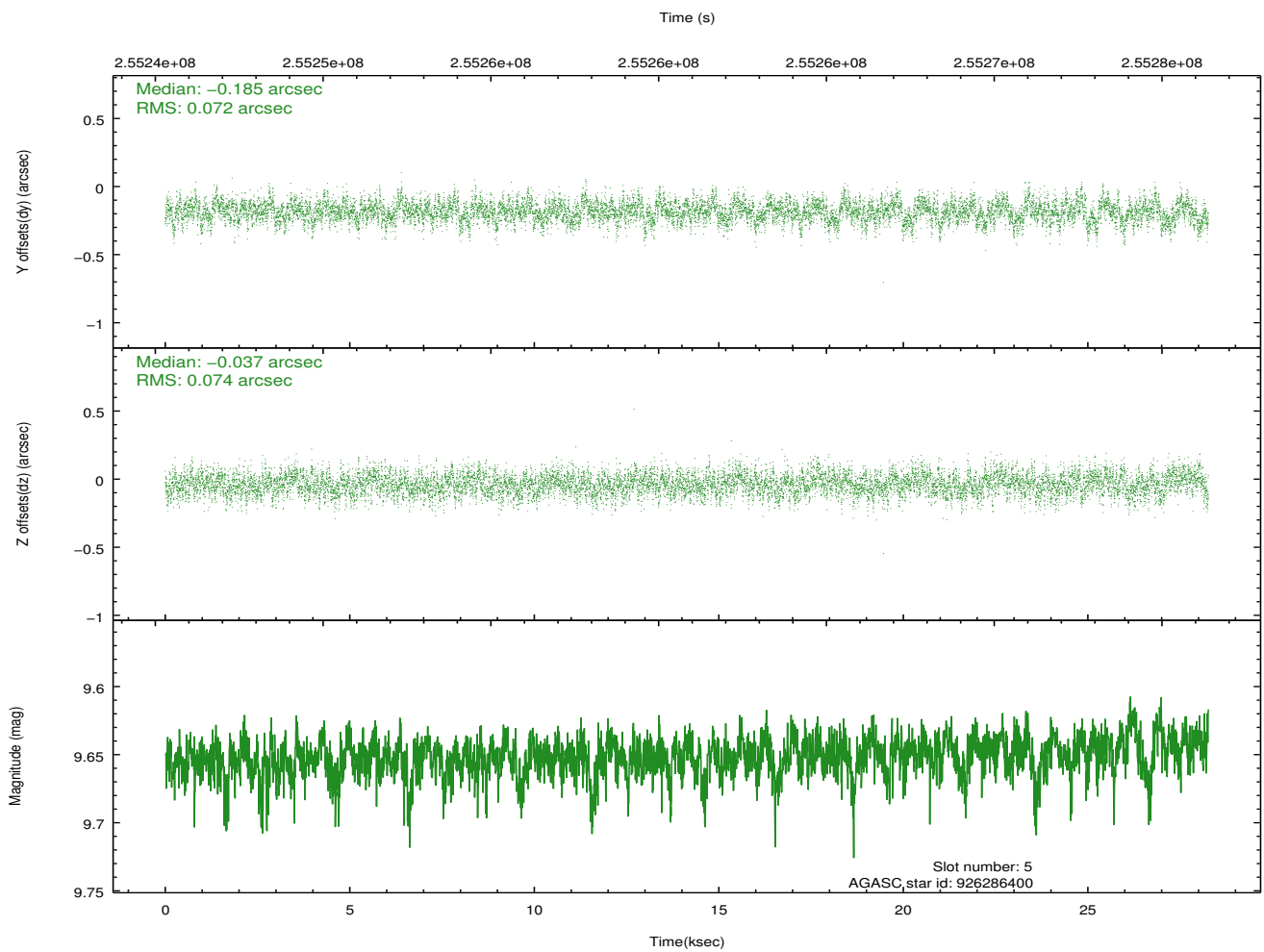
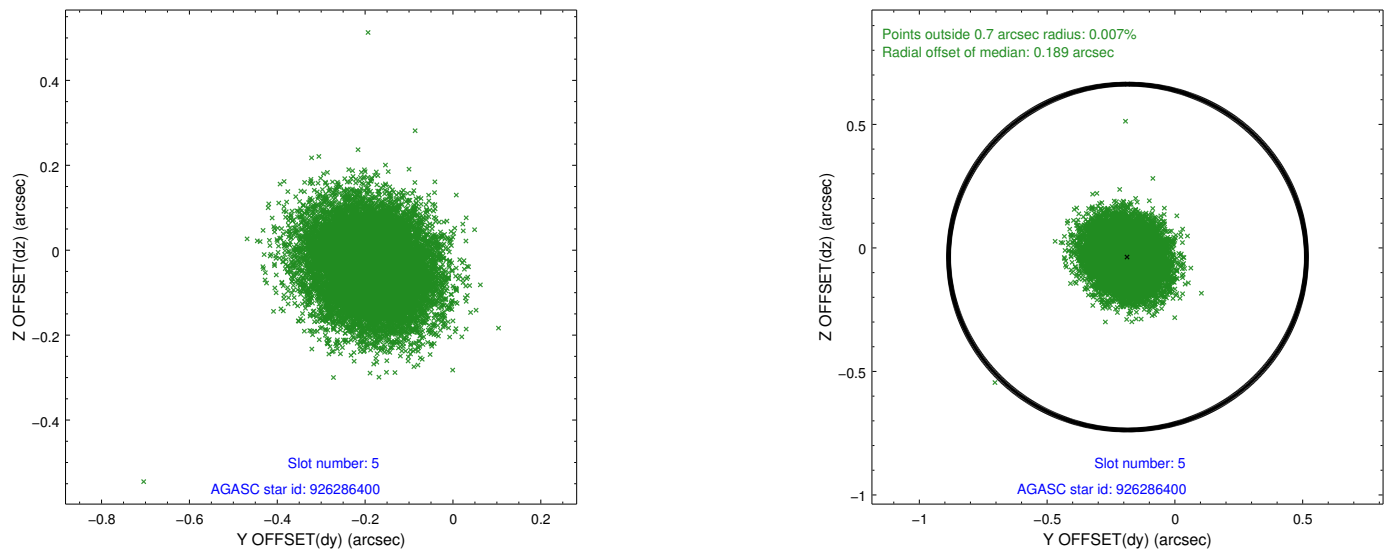
2.4.1 Slot 3



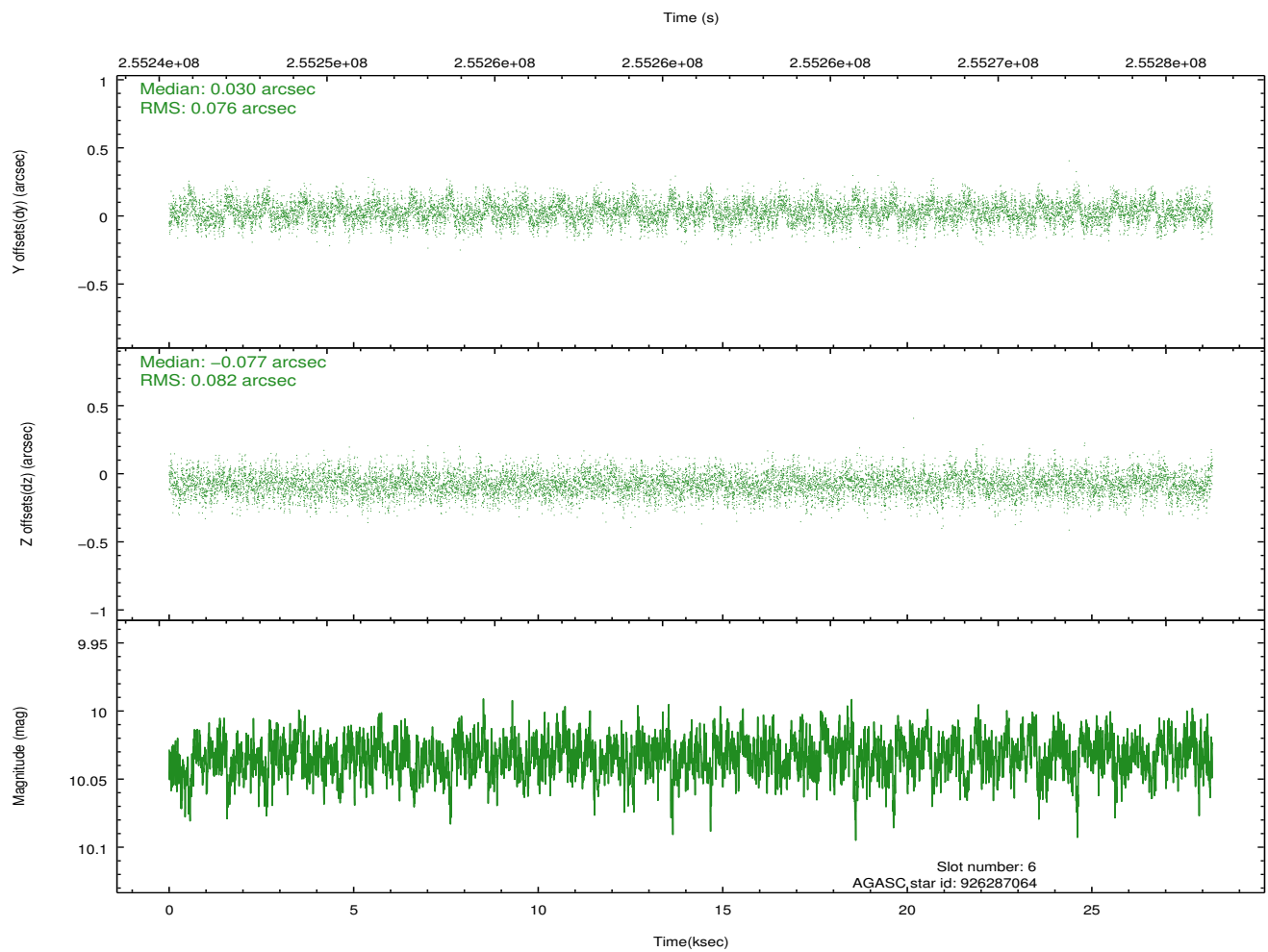
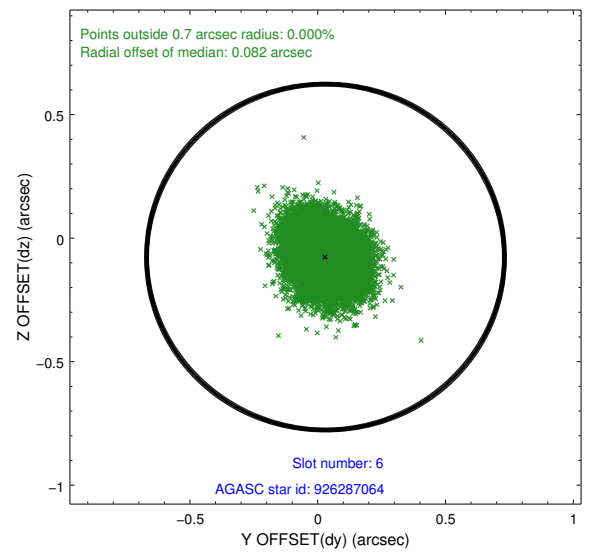
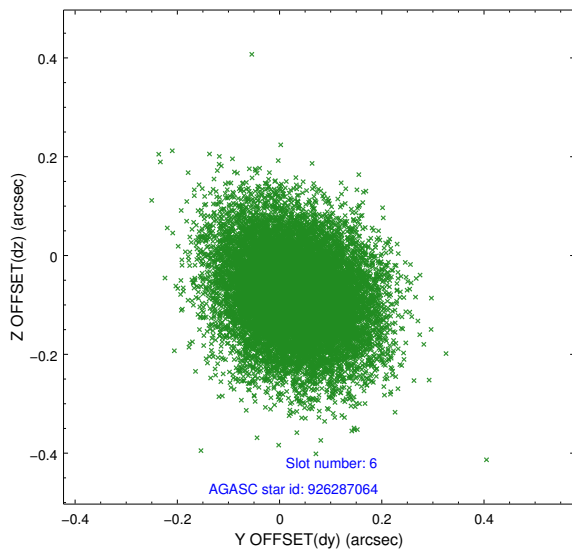
2.4.2 Slot 4



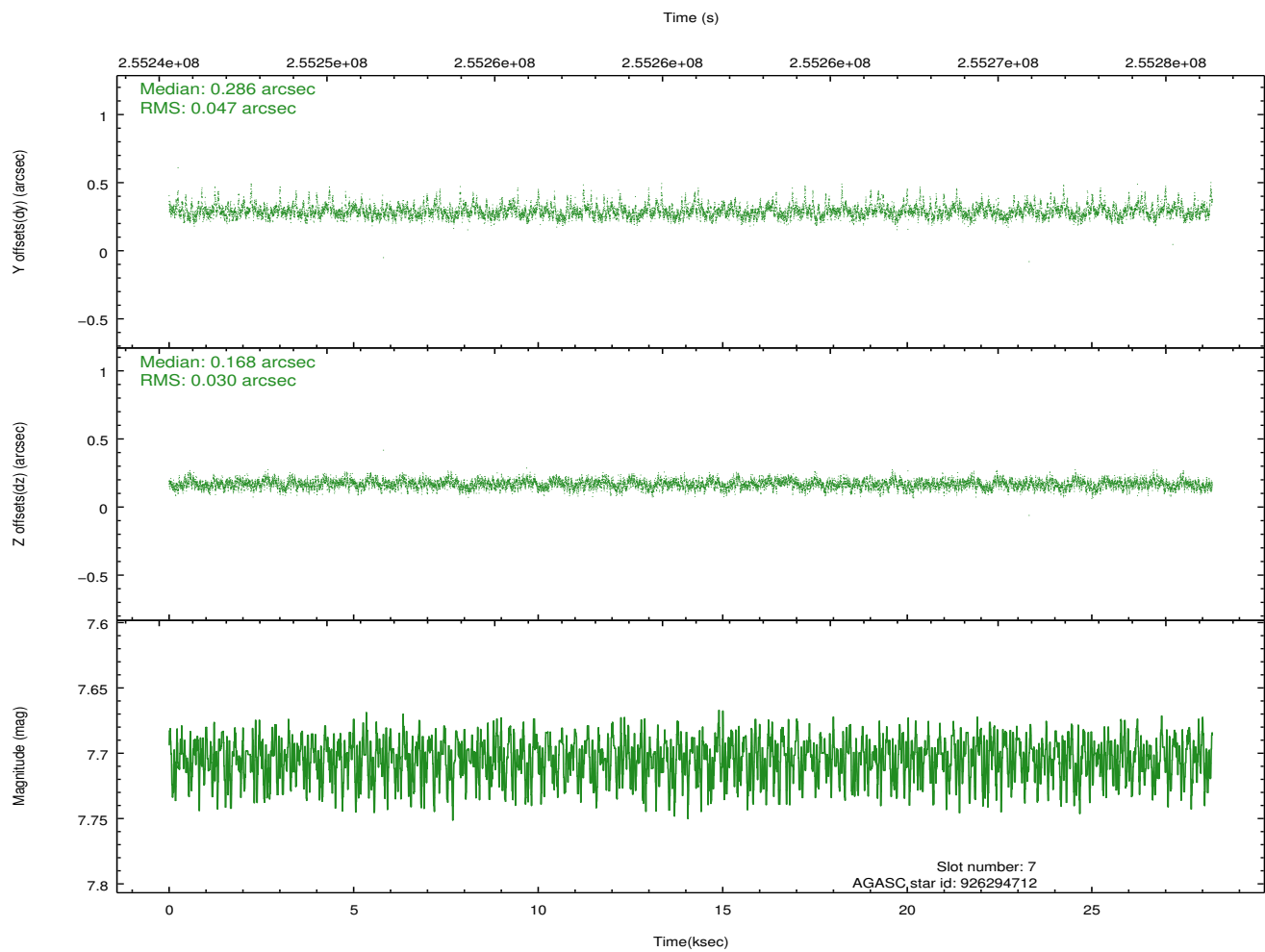
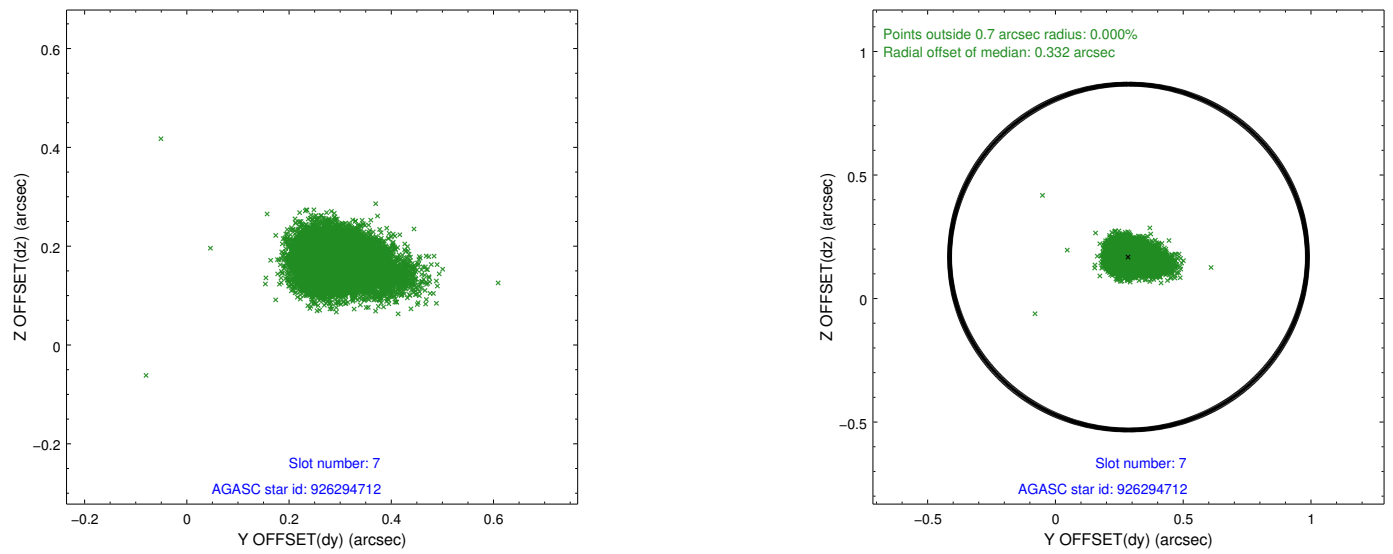
2.4.3 Slot 5



2.4.4 Slot 6

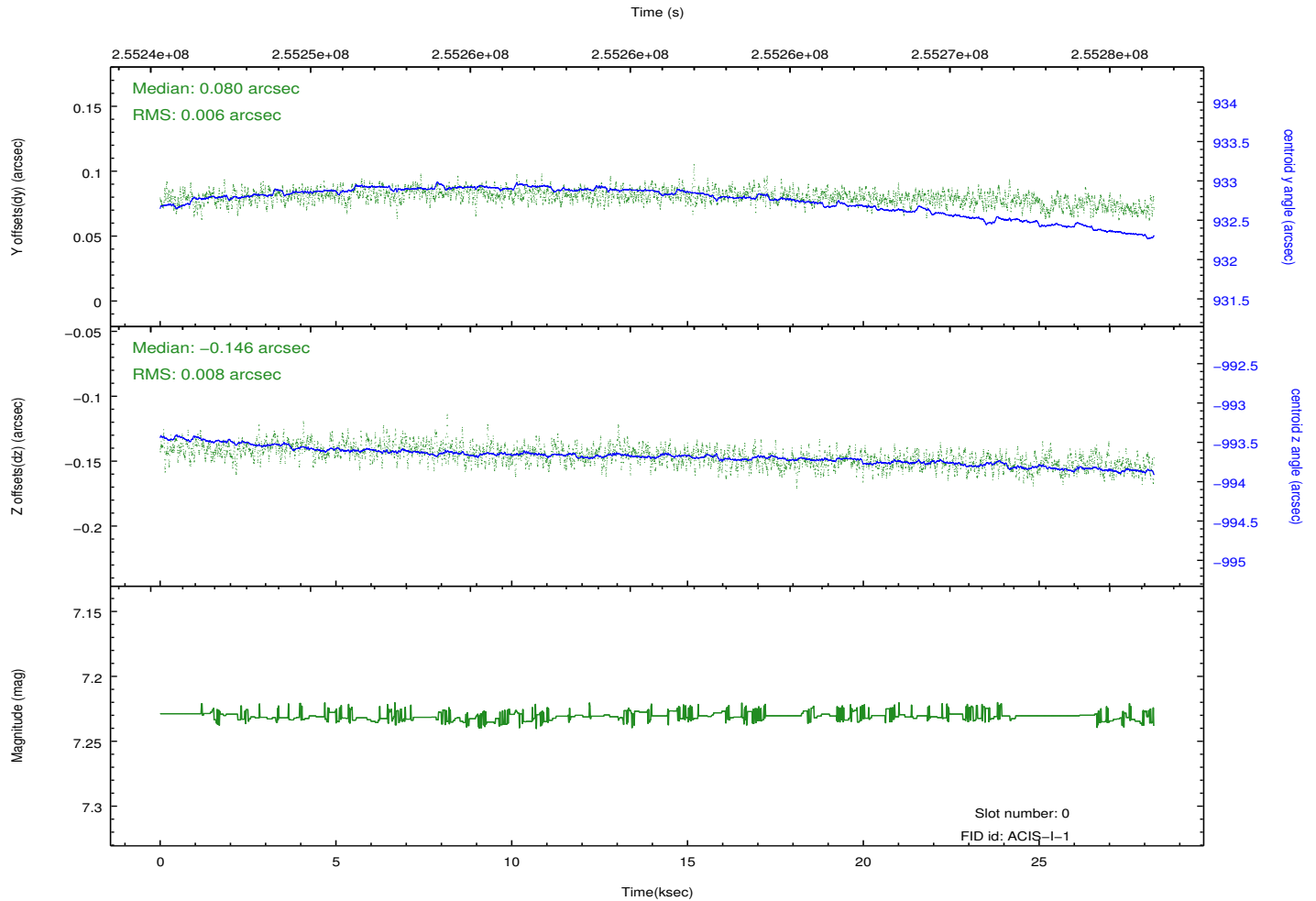
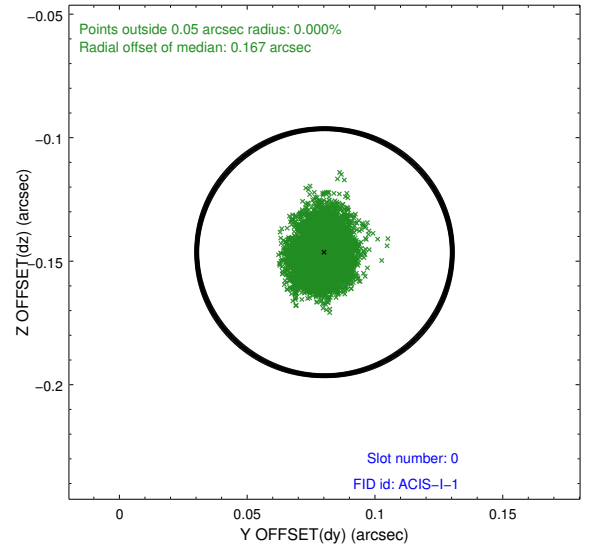
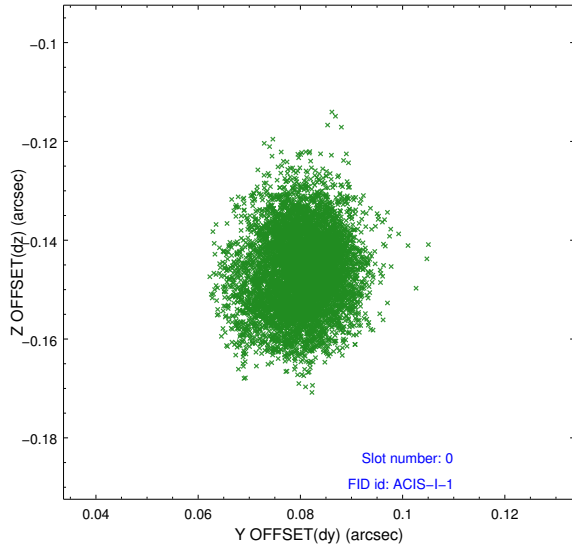


2.4.5 Slot 7

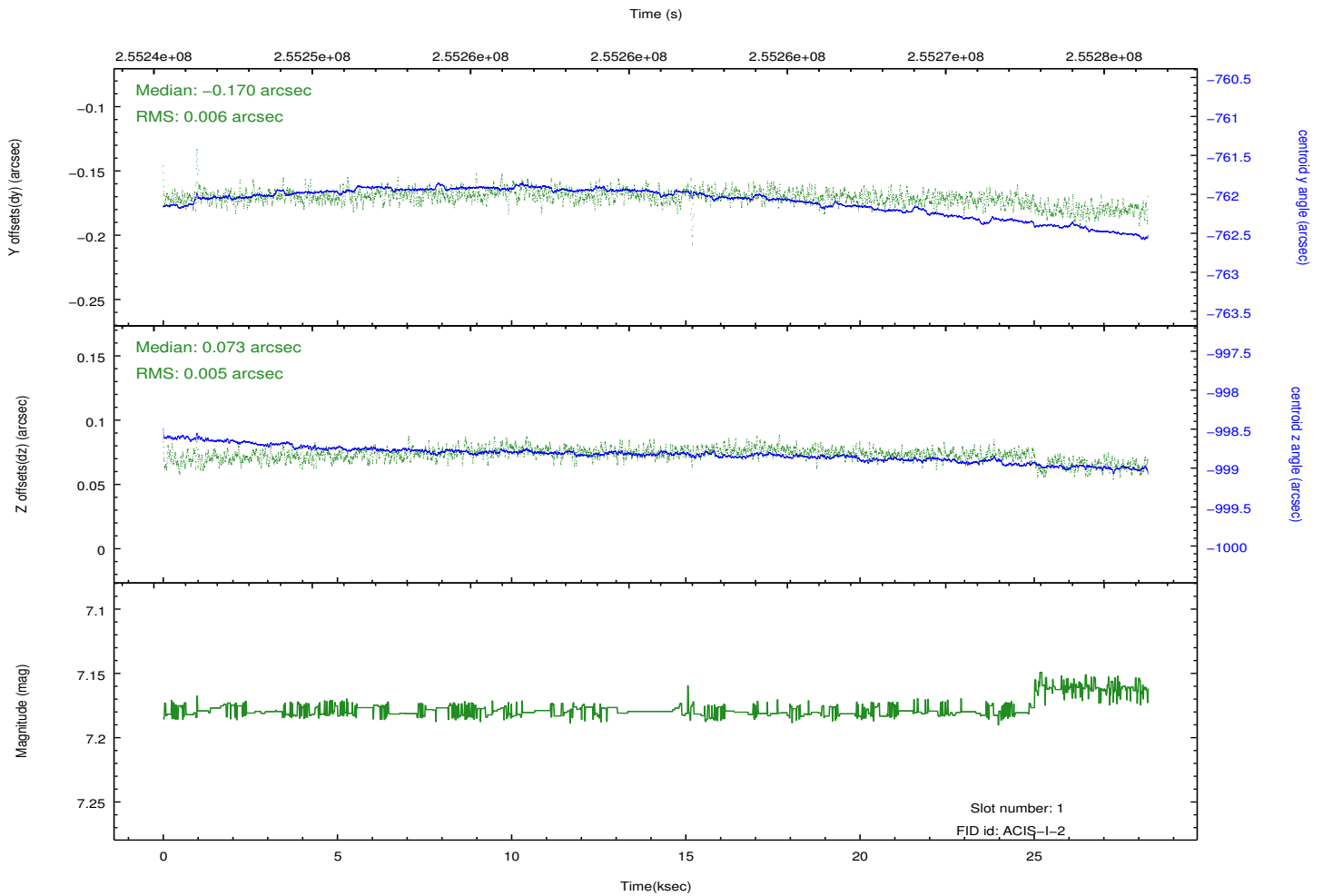
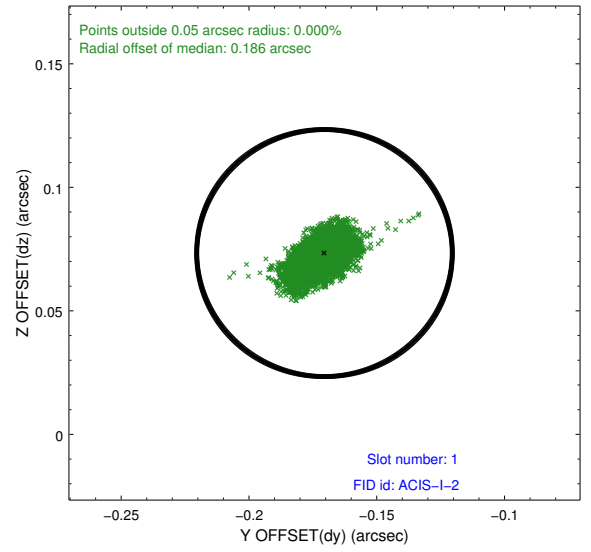
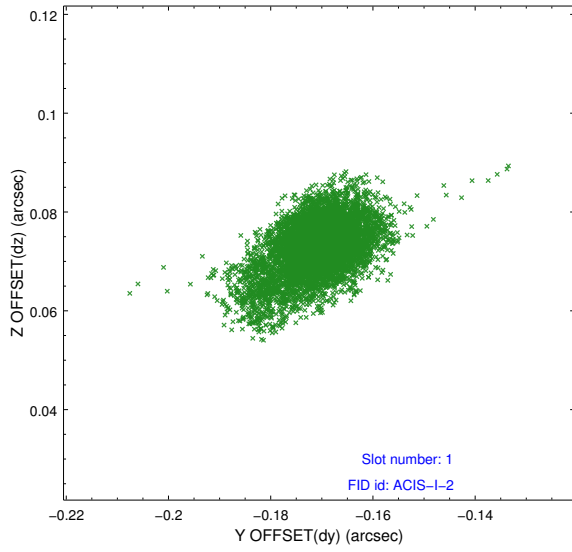


2.5 FID Slots

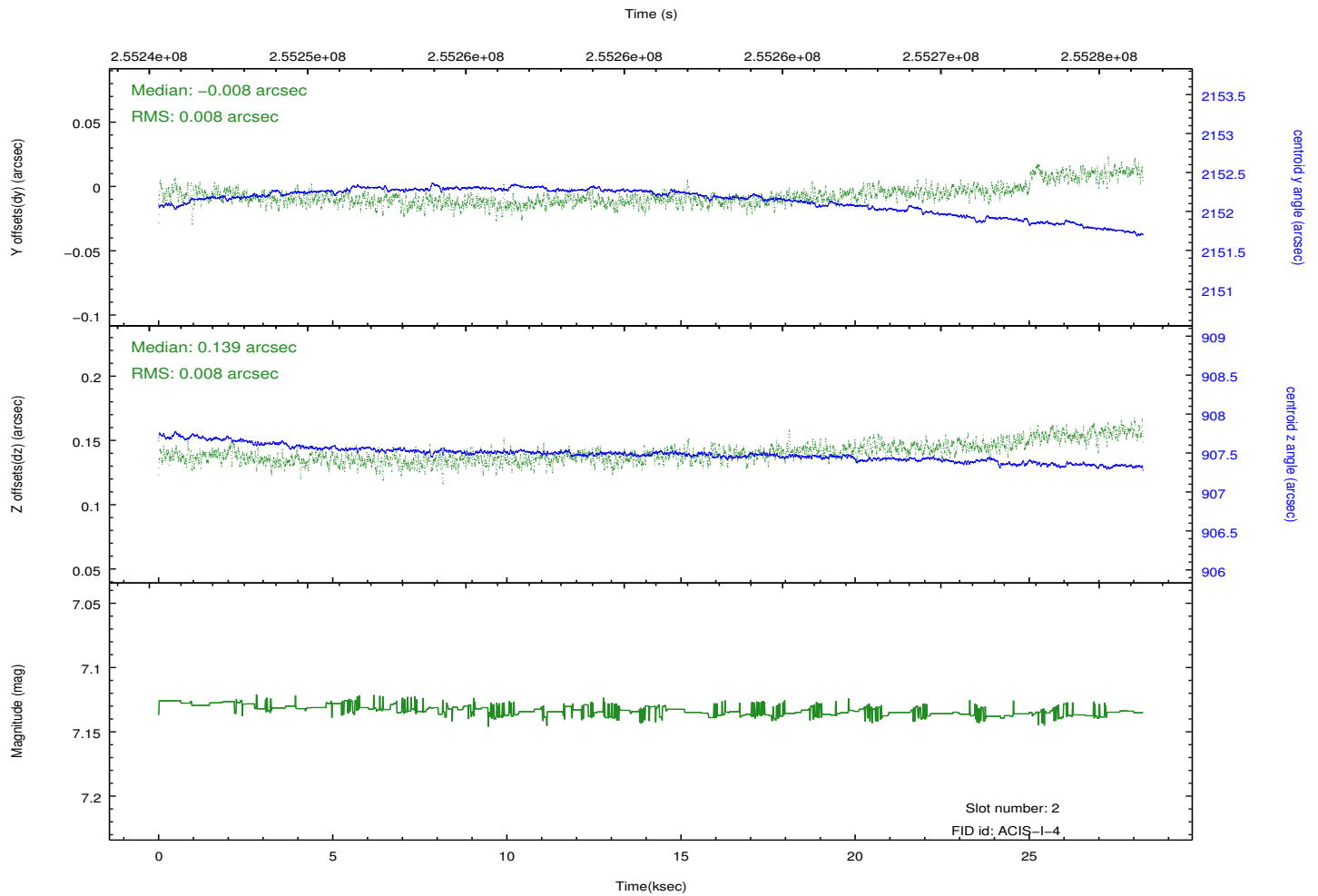
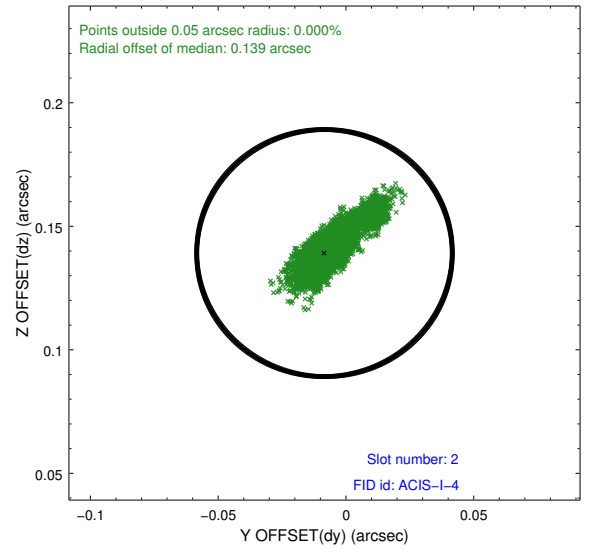
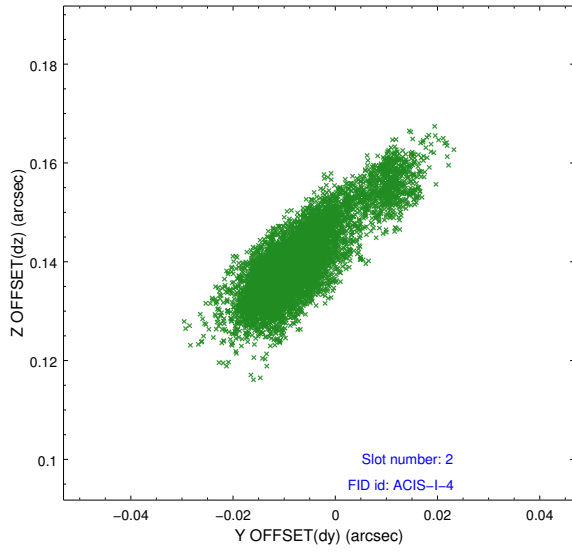
2.5.1 Slot 0



2.5.2 Slot 1



2.5.3 Slot 2



A Summary

A.1 Status

V&V Scientist	Jen Lauer
V&V Date (YYYY-MM-DD)	2012.03.27
V&V Edition	1
V&V Disposition and Status	OK
V&V Charge Time	28.0456589

A.2 Comments