

V&V Reference Report

L2 ASCDS Version : 8.4.5

Observation 587 - L2 Version 4
Chandra X-Ray Center

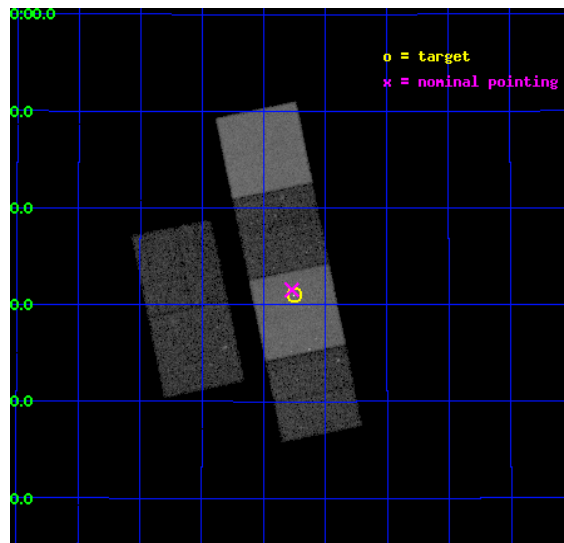
L2 Processing Date : Aug 24 2012

Contents

1	Front	2
2	OBI	3
2.1	OBI	3
2.1.1	Images	3
2.1.2	Bias	3
2.1.3	Parameters	4
2.1.4	Events	4
2.2	Compared Parameters	5
2.3	Aspect	6
2.4	Star Slots	9
2.4.1	Slot 3	9
2.4.2	Slot 4	10
2.4.3	Slot 5	11
2.4.4	Slot 6	12
2.4.5	Slot 7	13
2.5	FID Slots	14
2.5.1	Slot 0	14
2.5.2	Slot 1	15
2.5.3	Slot 2	16
A	Summary	17
A.1	Status	17
A.2	Comments	17

1 Front

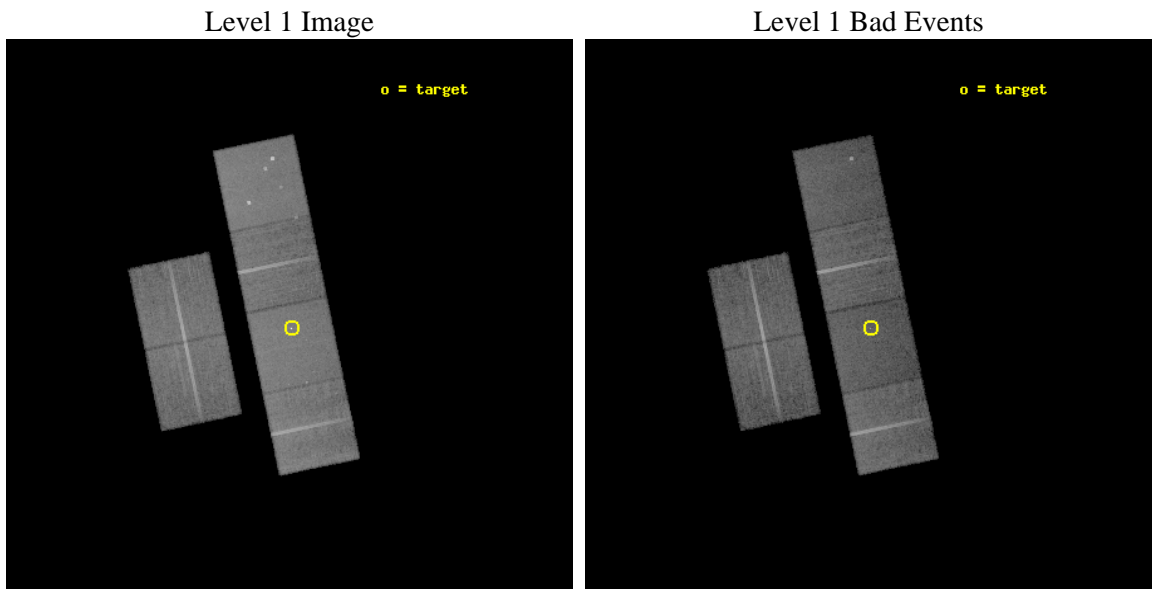
seq_num	200068	Sequence number
obs_id	587	Observation id
title	X-RAY IMAGING OF THE INTERACTING WINDS OF PLANETARY NEBULAE	Propos
observer	Dr. Joel Kastner	Principal investigator
object	BD+303639	Source name
dtycle	0	
cycle	P	events from which exps? Prim/Second/Both
ra_targ	293.688333	Observer's specified target RA [deg]
dec_targ	30.516417	Observer's specified target Dec [deg]
ra_nom	293.69277836254	Nominal RA [deg]
dec_nom	30.525728068435	Nominal Dec [deg]
roll_nom	78.267017926084	Nominal Roll [deg]
revision	4	Processing version of data
ontime	19215.590106547	Sum of GTIs [s]
livetime	18972.270734379	Livetime [s]
ontime2	19212.349096462	Sum of GTIs [s]
ontime3	19212.349096462	Sum of GTIs [s]
ontime5	19215.590086639	Sum of GTIs [s]
ontime6	19211.83858715	Sum of GTIs [s]
ontime7	19215.590106547	Sum of GTIs [s]
ontime8	19209.108166158	Sum of GTIs [s]
l2events	220371	Number of level 2 events



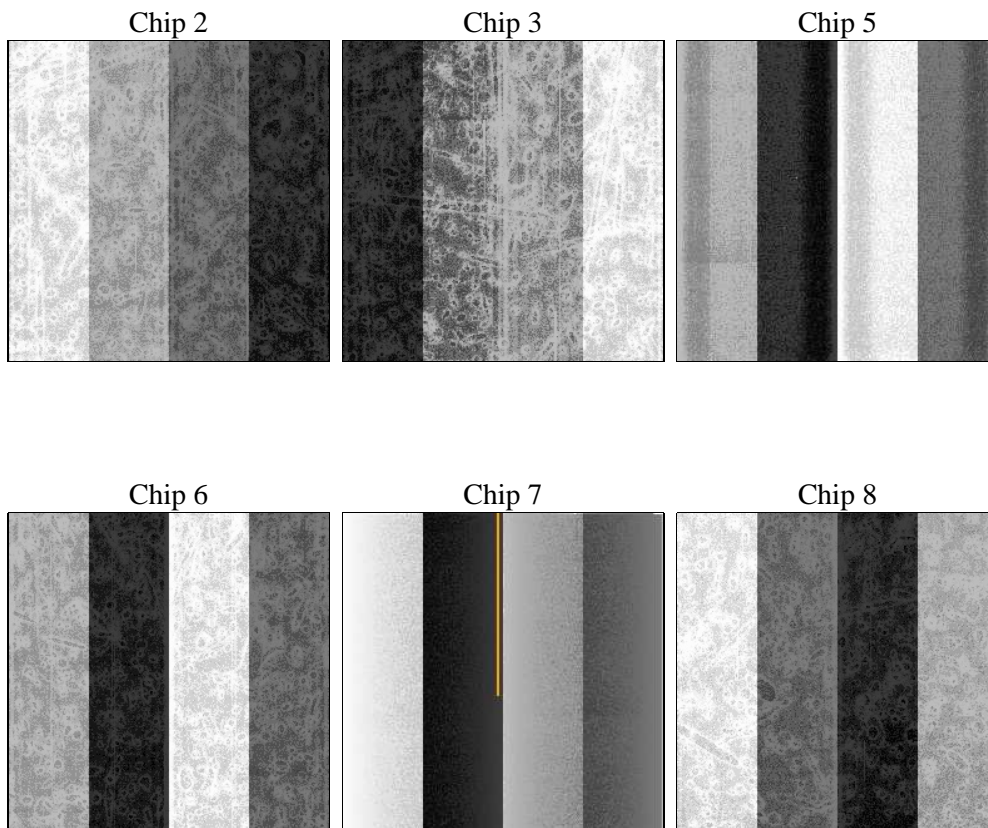
2 OBI

2.1 OBI

2.1.1 Images



2.1.2 Bias



2.1.3 Parameters

obi_num	0	Obi number	sched_exp_time	19500.000000	[s] Scheduled observation exposure time
ascdsver	8.4.5	Processing system revision	ontime	19215.590106547	Sum of GTIs [s]
caldbver	4.5.1.1	 	ontime2	19212.349096462	Sum of GTIs [s]
date	2012-08-24T13:49:27	Date and time of file creation	ontime3	19212.349096462	Sum of GTIs [s]
revision	4	Processing version of data	ontime5	19215.590086639	Sum of GTIs [s]
			ontime6	19211.83858715	Sum of GTIs [s]
			ontime7	19215.590106547	Sum of GTIs [s]
			ontime8	19209.108166158	Sum of GTIs [s]
			l1events	969425	Number of level 1 events

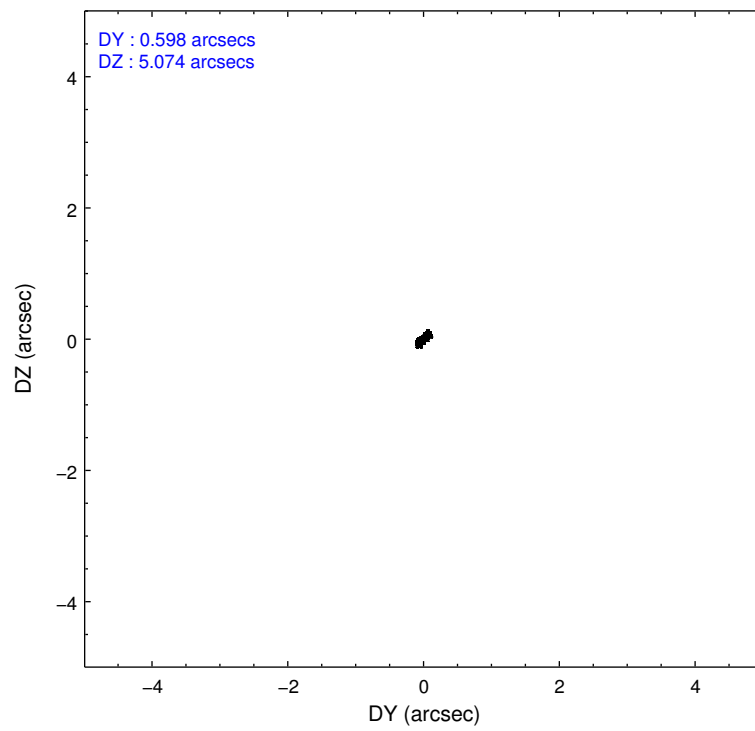
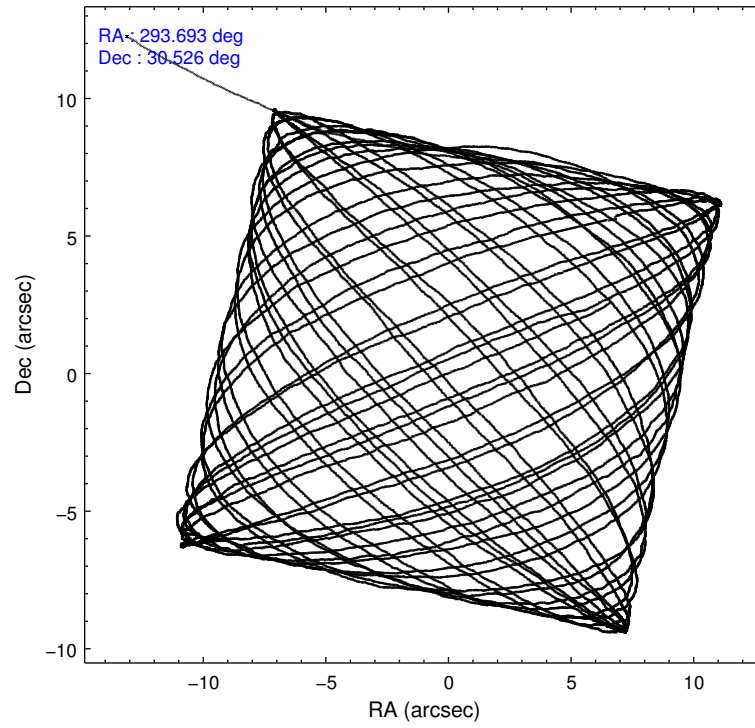
2.1.4 Events

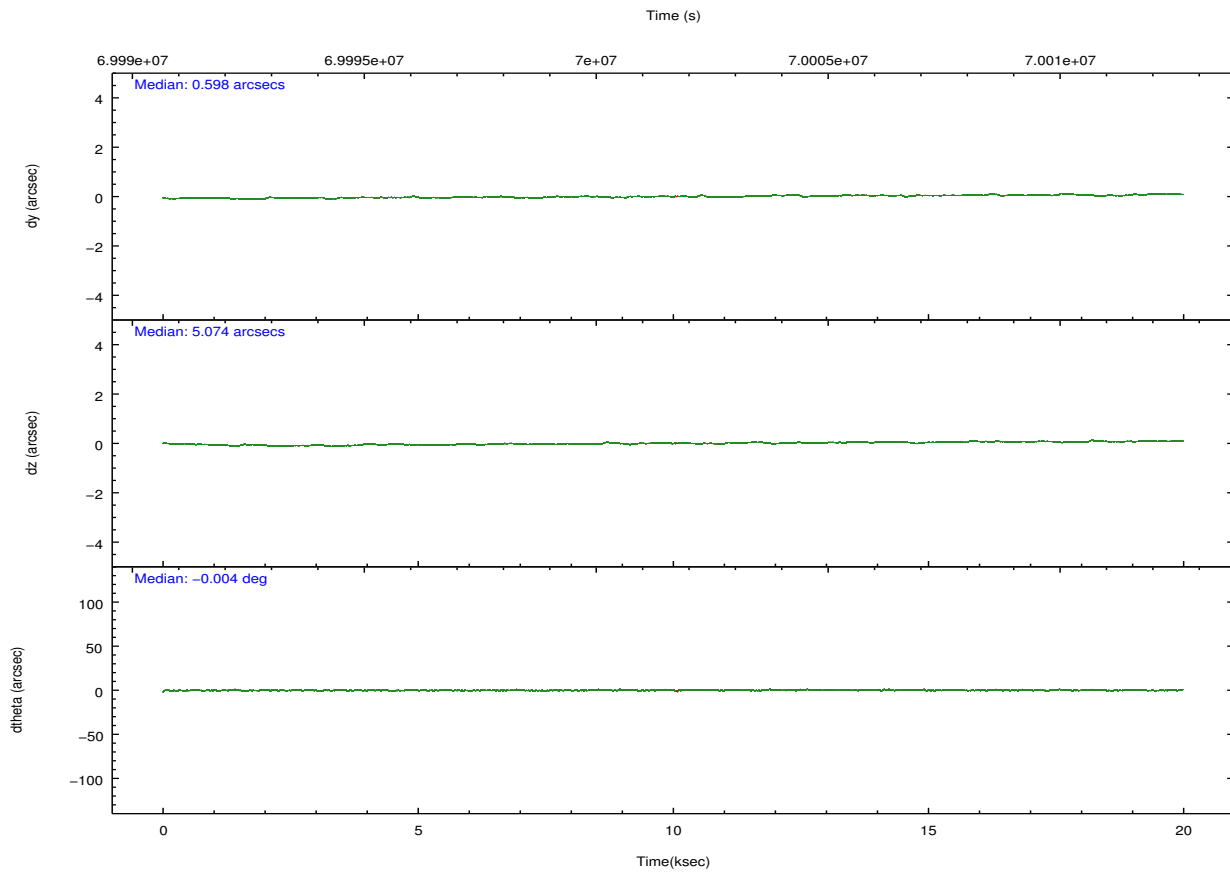
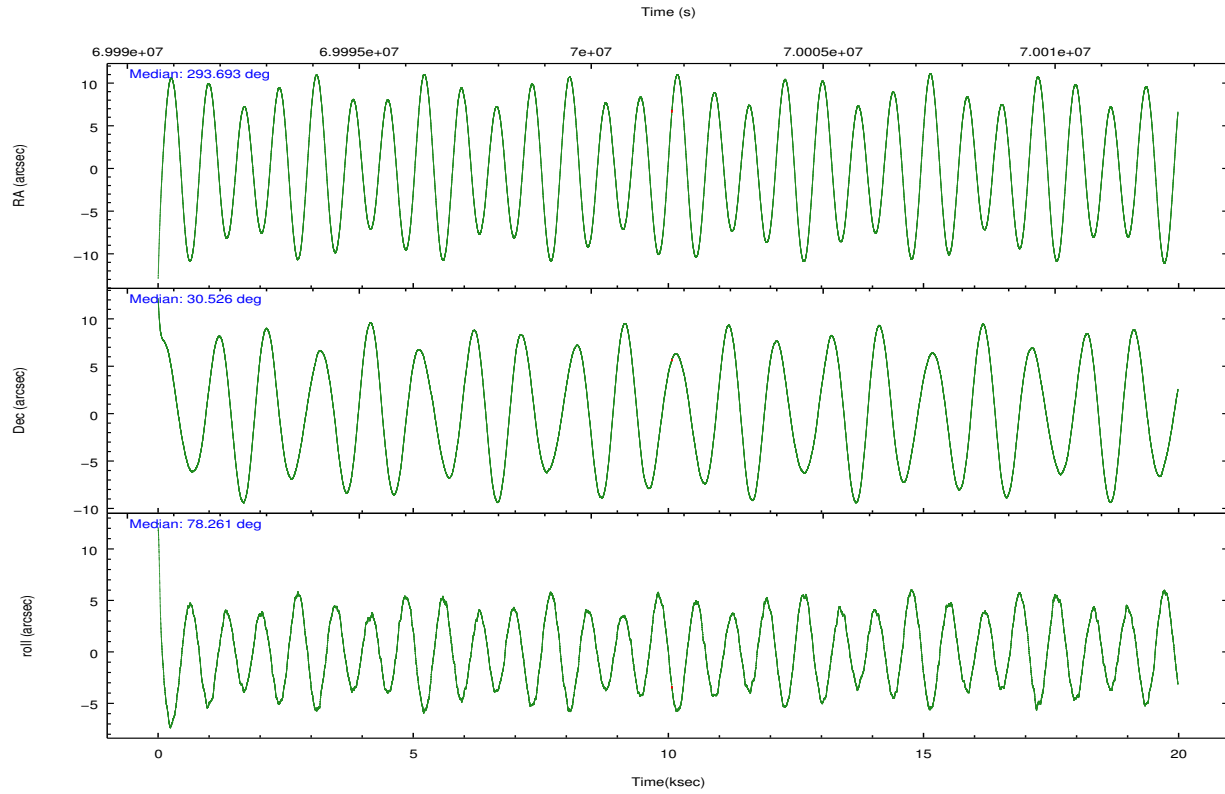
	ccd 2	ccd 3	ccd 5	ccd 6	ccd 7	ccd 8		ccd 2	ccd 3	ccd 5	ccd 6	ccd 7	ccd 8
level 1 events	145024	136848	189612	144785	173923	179233	grade 0 events	7500	7795	13918	8519	11660	12425
rejected events	129004	120739	96902	127431	93410	144594		5%	5%	7%	5%	6%	6%
rejected %	88%	88%	51%	88%	53%	80%	grade 1 events	54	73	240	62	228	121
								0%	0%	0%	0%	0%	0%
							grade 2 events	3104	2856	27417	3063	16544	6936
								2%	2%	14%	2%	9%	3%
							grade 3 events	1485	1531	4160	1594	7690	3572
								1%	1%	2%	1%	4%	1%
							grade 4 events	1499	1465	3958	1509	7579	3322
								1%	1%	2%	1%	4%	1%
							grade 5 events	4171	4581	14547	5177	15712	6491
								2%	3%	7%	3%	9%	3%
							grade 6 events	2441	2471	43296	2685	37072	8408
								1%	1%	22%	1%	21%	4%
							grade 7 events	124770	116076	82076	122176	77438	137958
								86%	84%	43%	84%	44%	76%

2.2 Compared Parameters

Parameter	Planned	Actual	Parameter	Planned	Actual
Instrument	ACIS	ACIS	Obspar format version number	7	7
Detector	ACIS-235678	ACIS-235678	Obspar file type	PREDICTED	ACTUAL
Grating	NONE	NONE	Obspar update status	NONE	UPDATED
Data mode	FAINT	FAINT	Number of optional ACIS chips dropped	0	0
Observation mode	POINTING	POINTING	On-chip summing requested	N	N
[deg] Pointing RA	293.702821	293.6927783625421	Subarray requested	NONE	NONE
[deg] Pointing Dec	30.499651	30.52572806843533	Alternating exposures requested	N	N
[deg] Pointing Roll	78.105289	78.26701792608371	[s] Primary exposure time	0.000000	3.2
[mm] SIM focus pos	-0.684267	-0.6828225247311905			
[mm] SIM defocus	0	0.001444936568705701			
[mm] SIM translation stage pos	-190.132523	-190.1425803651734			
[mm] SIM translation stage offset	0	0.01005778216563158			
[s] Observation start time (MET)	69992150.184000	69990760.003804			
Observation start date	2000-03-21T02:14:46	2000-03-21T01:52:40			
[s] Observation end time (MET)	70011650.184000	70012489.492098			
Observation end date	2000-03-21T07:39:46	2000-03-21T07:54:49			
Read mode	TIMED	TIMED			

2.3 Aspect



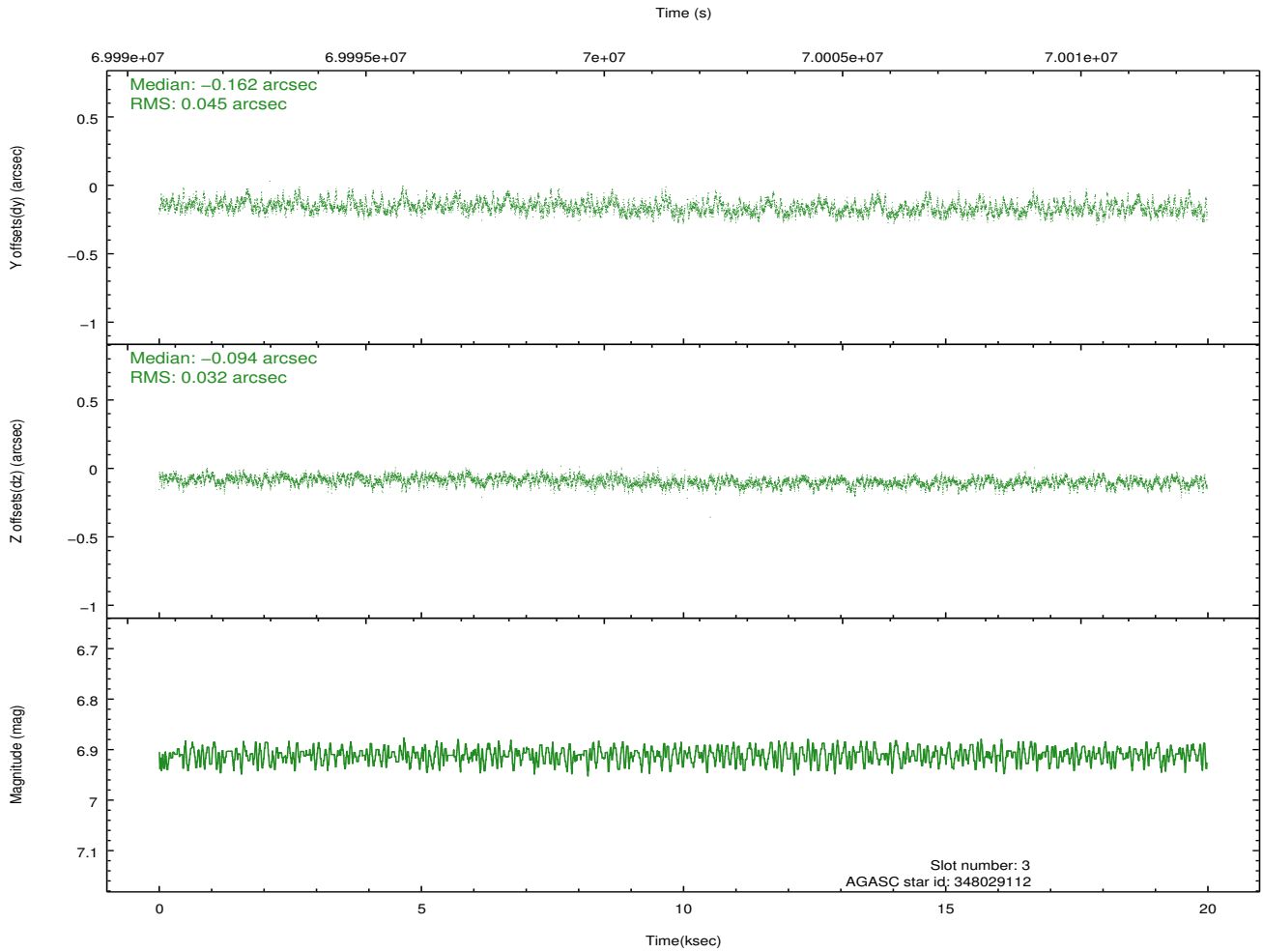
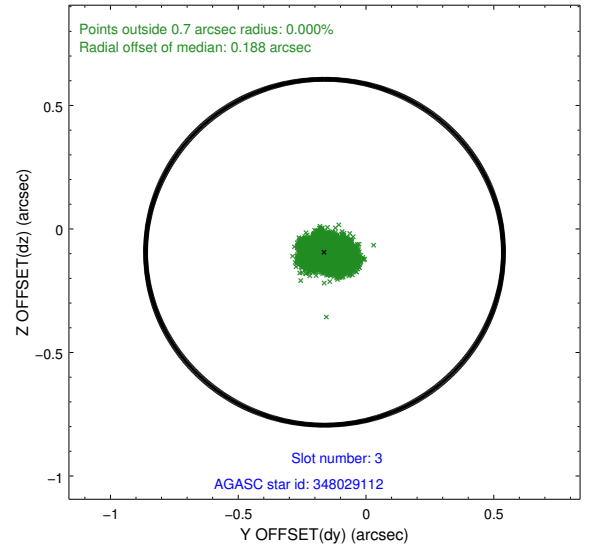
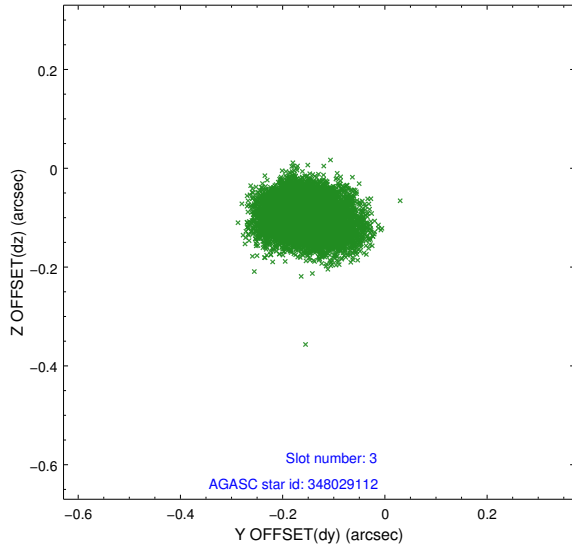


Slot Statistics

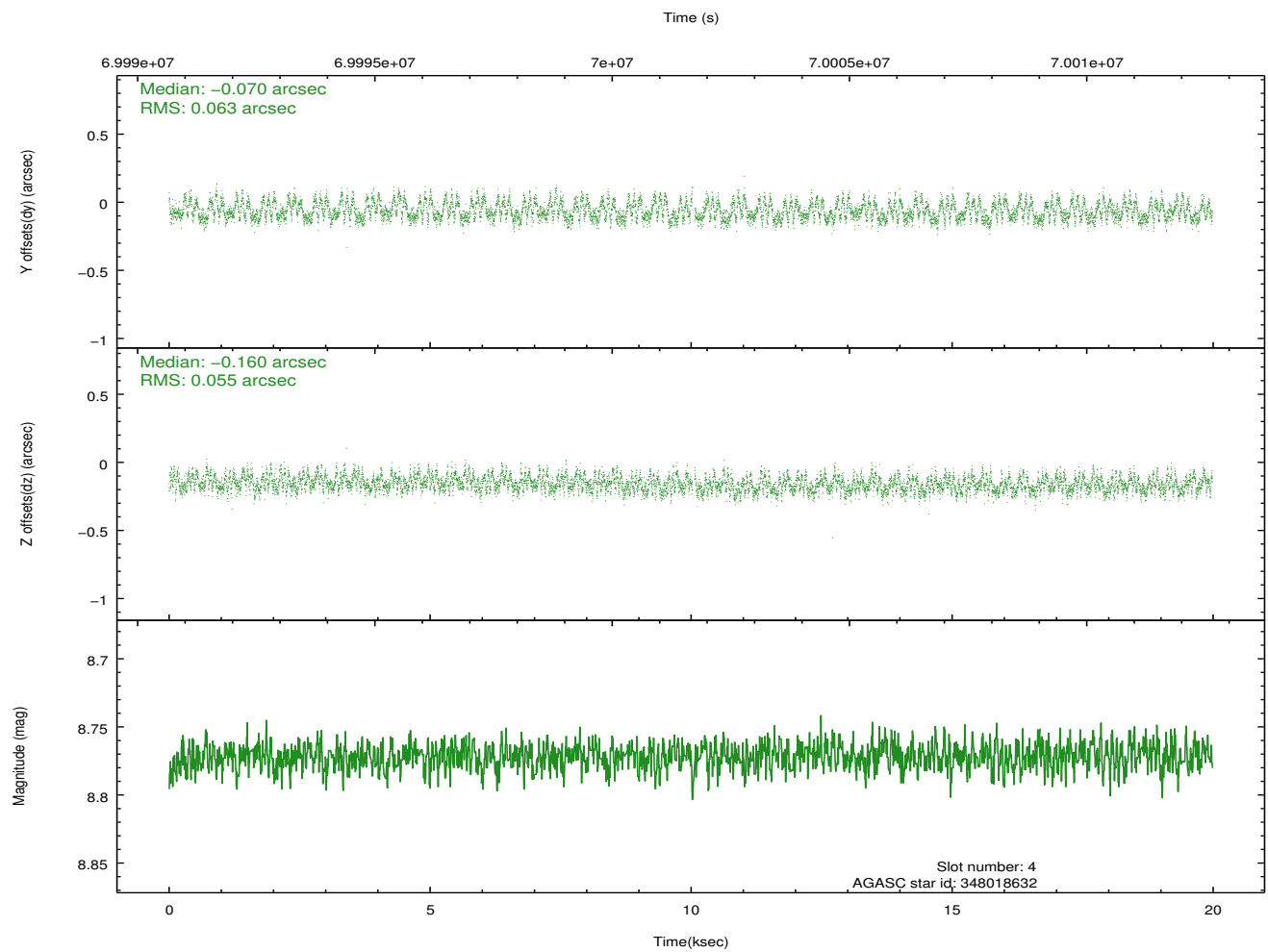
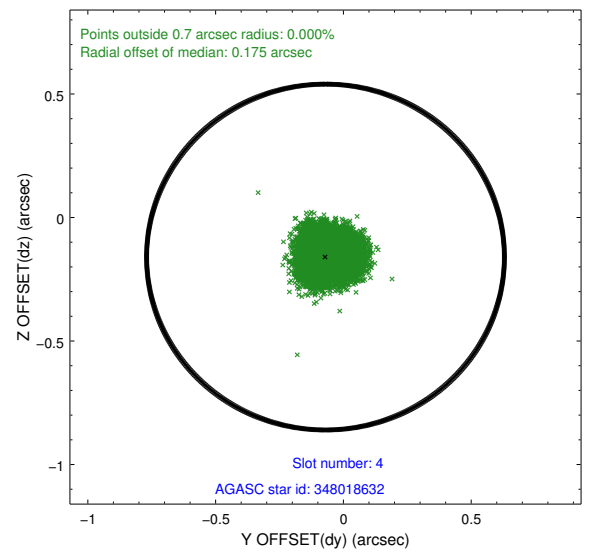
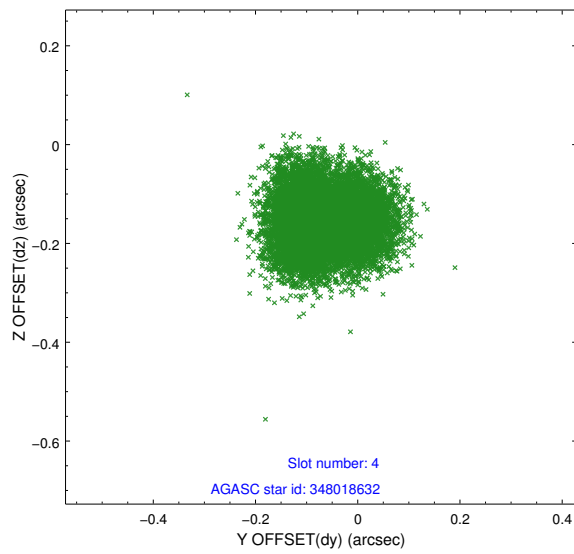
slot	status	id	mag	n_pts	med_dy	med_dz	dr1	dr2	ra	dec	mean_y	mean_z
0	FID	ACIS-S-2	7.11	4866	-0.033	-0.010	0.014	0.021	0.000000	0.000000	-753.21	-1726.15
1	FID	ACIS-S-4	7.21	4866	0.020	0.018	0.024	0.035	0.000000	0.000000	2160.04	182.17
2	FID	ACIS-S-5	7.23	4866	-0.021	0.001	0.016	0.027	0.000000	0.000000	-1805.80	176.04
3	GUIDE	348029112	6.91	9730	-0.162	-0.094	0.058	0.098	293.228734	31.236085	2296.24	1974.95
4	GUIDE	348018632	8.77	9725	-0.070	-0.160	0.091	0.138	293.088798	30.882026	961.09	2140.97
5	GUIDE	348027440	8.10	9727	0.065	0.072	0.063	0.103	294.217472	30.325018	-281.62	-1693.81
6	GUIDE	347998528	9.27	9727	0.021	-0.005	0.076	0.123	294.052060	30.163784	-957.31	-1313.18
7	GUIDE	281819336	9.62	9720	0.137	0.188	0.089	0.143	294.043843	29.821272	-2168.42	-1545.86

2.4 Star Slots

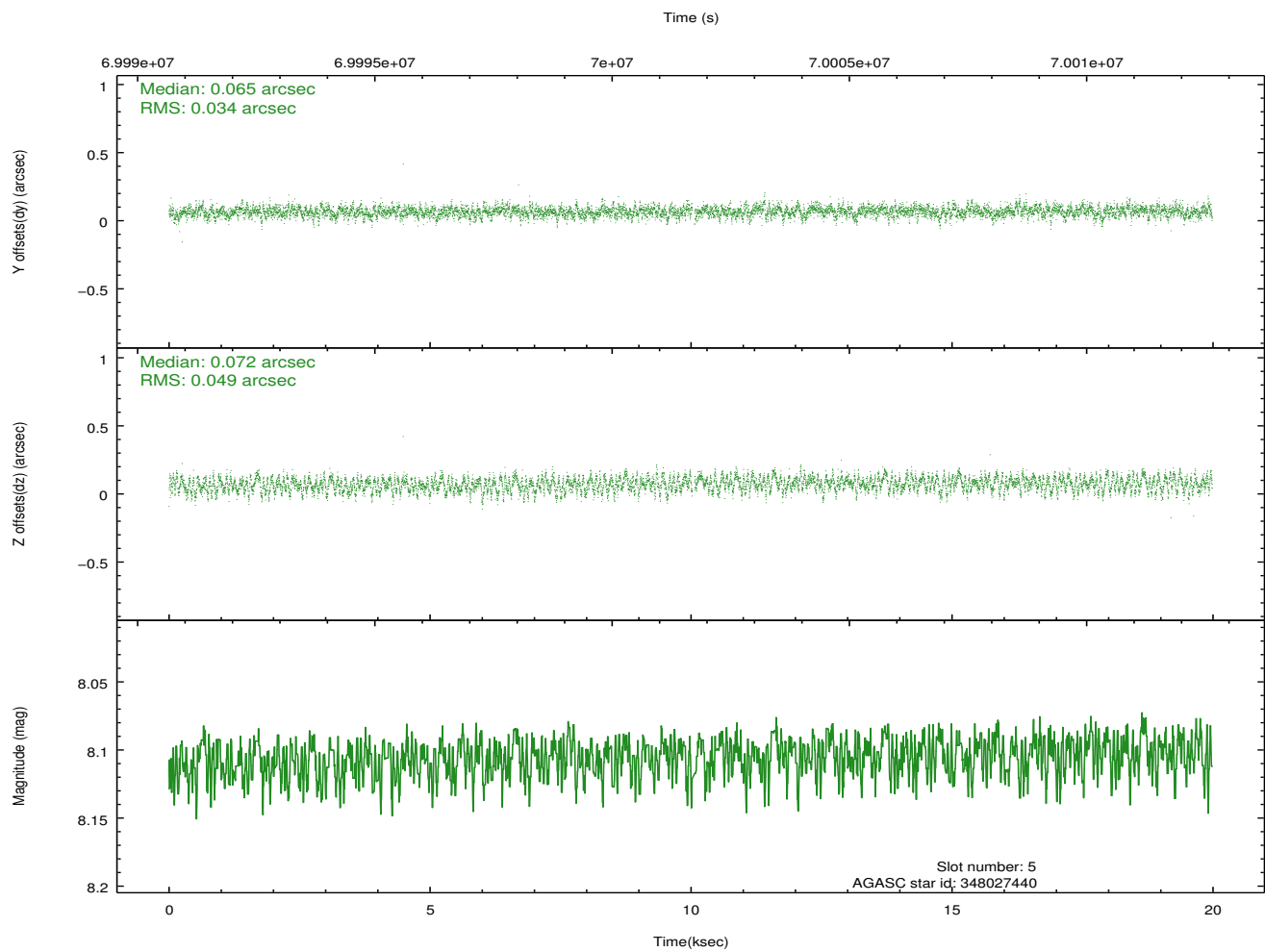
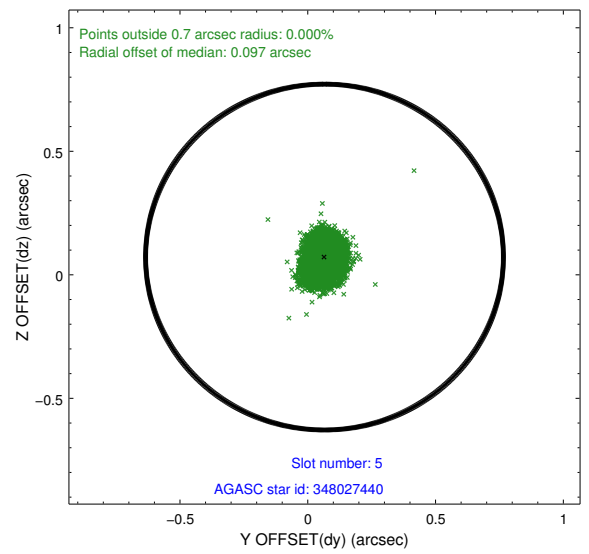
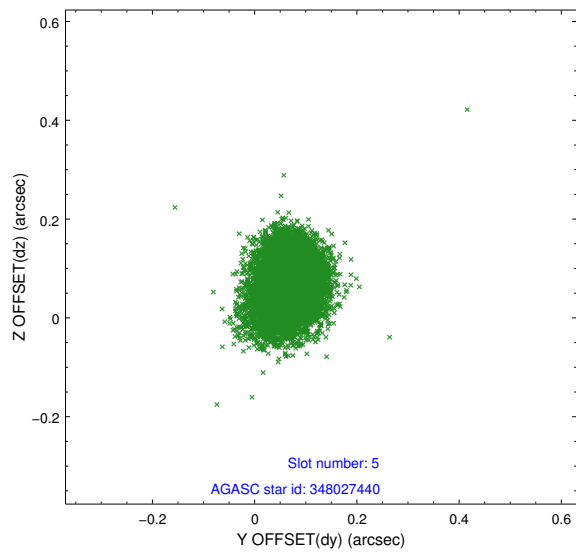
2.4.1 Slot 3



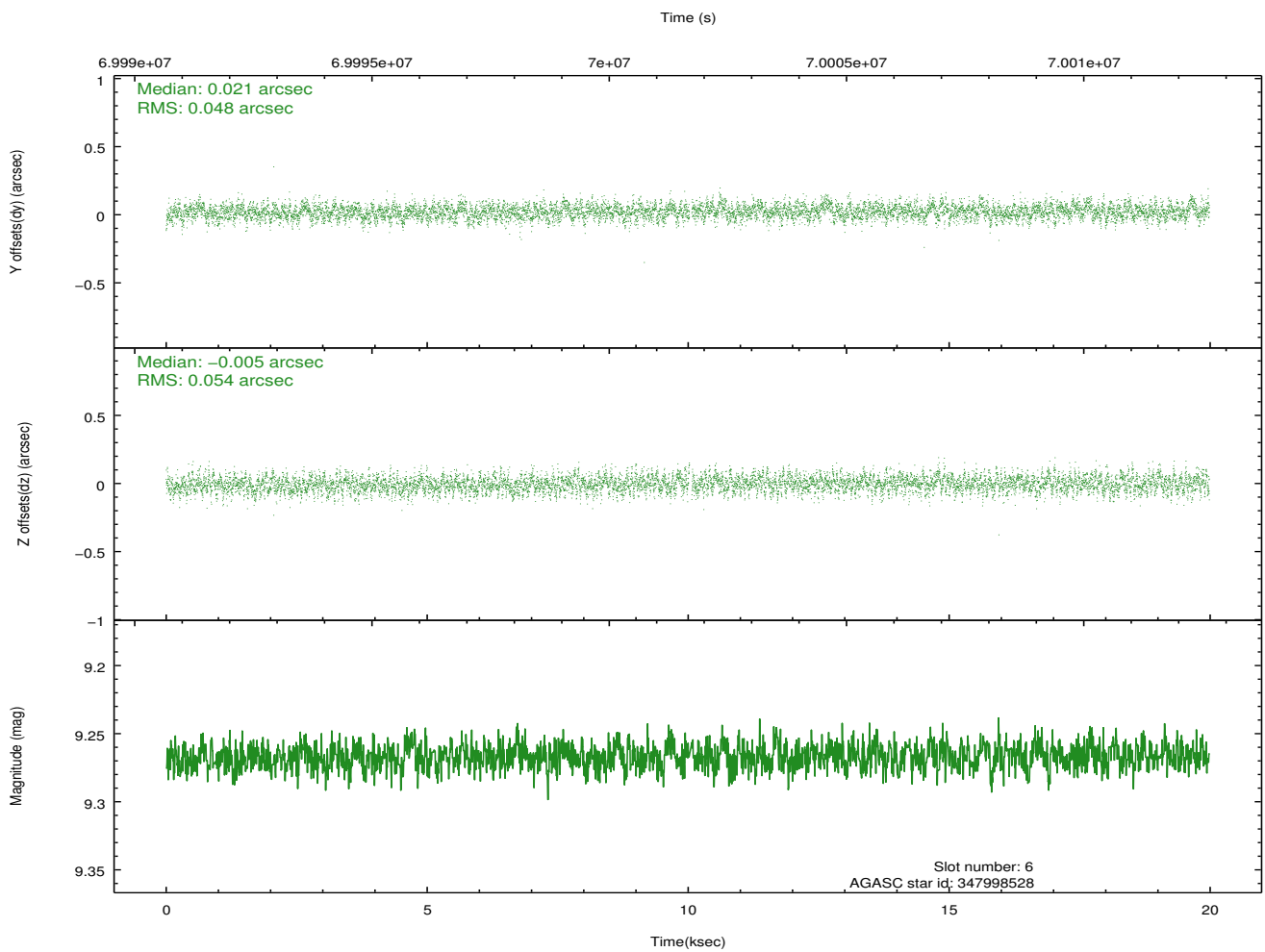
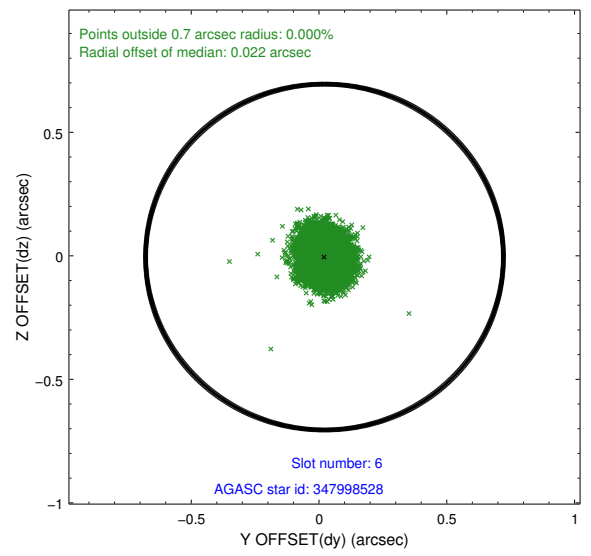
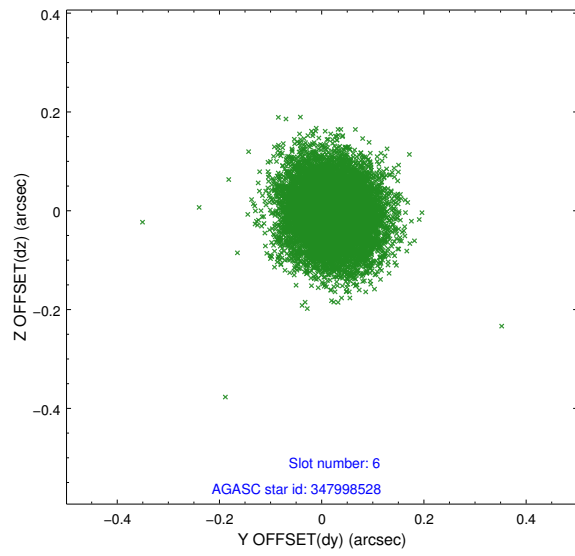
2.4.2 Slot 4



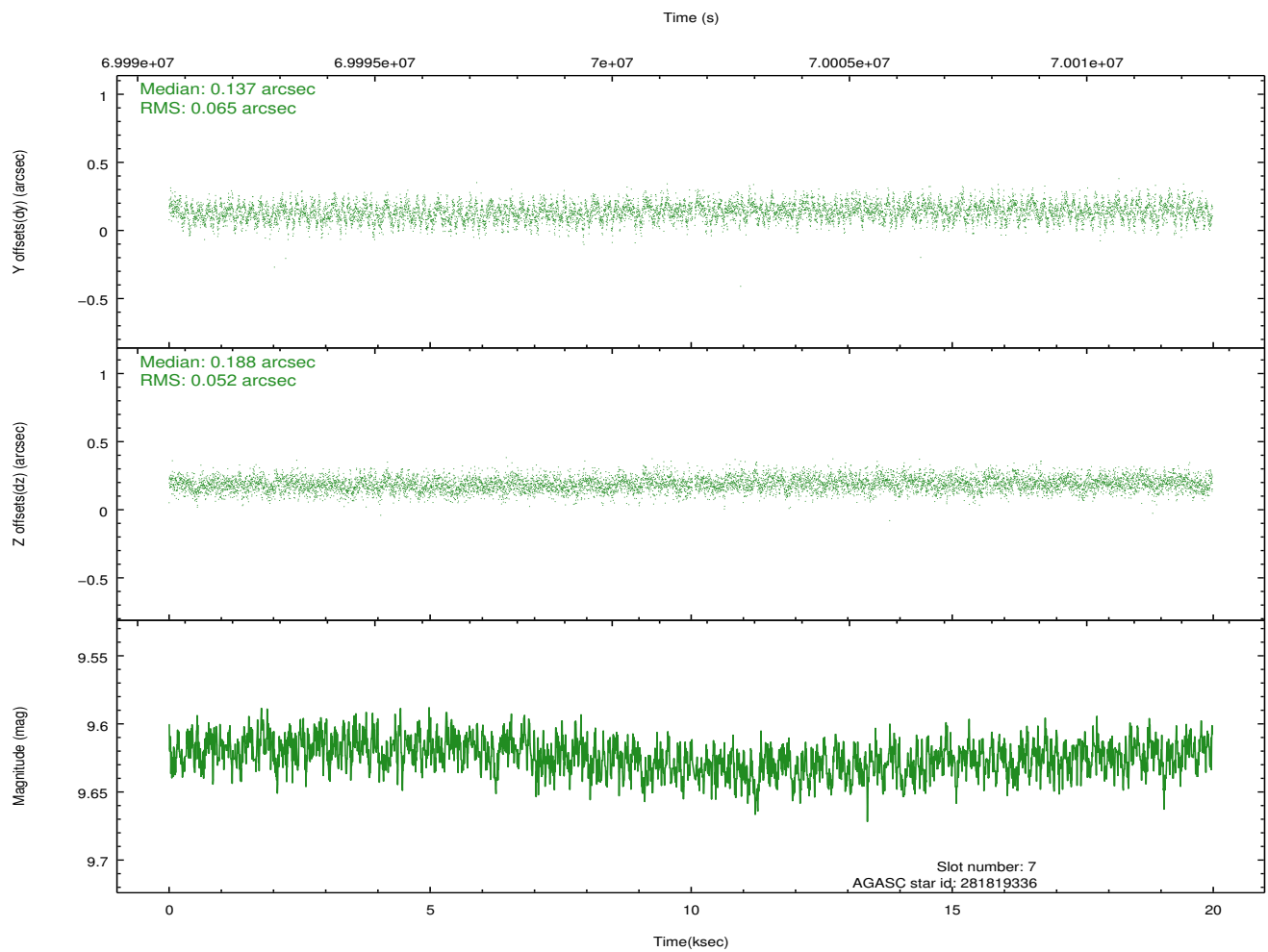
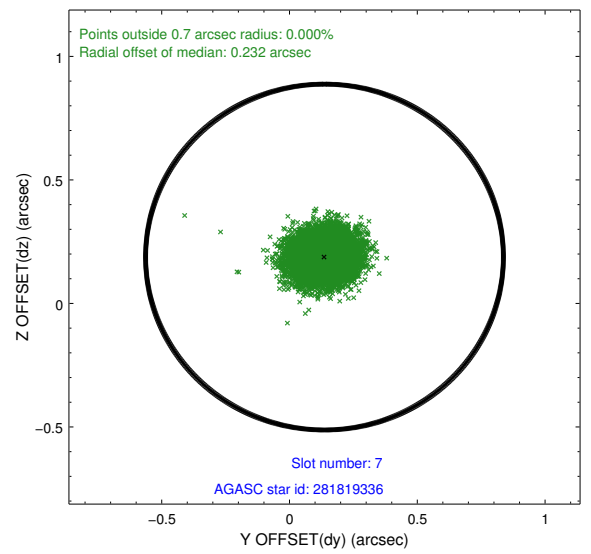
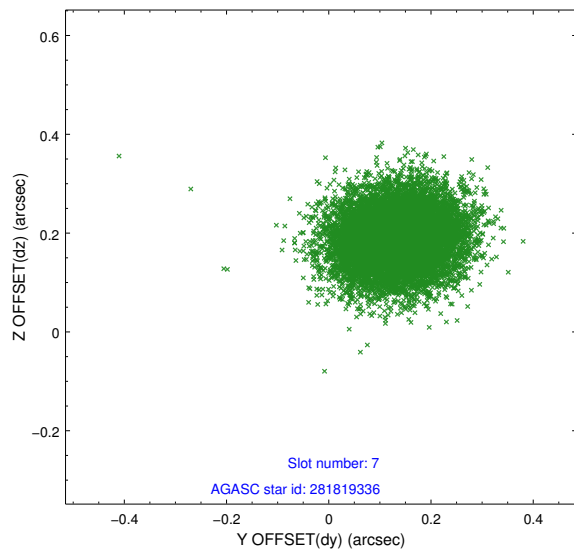
2.4.3 Slot 5



2.4.4 Slot 6

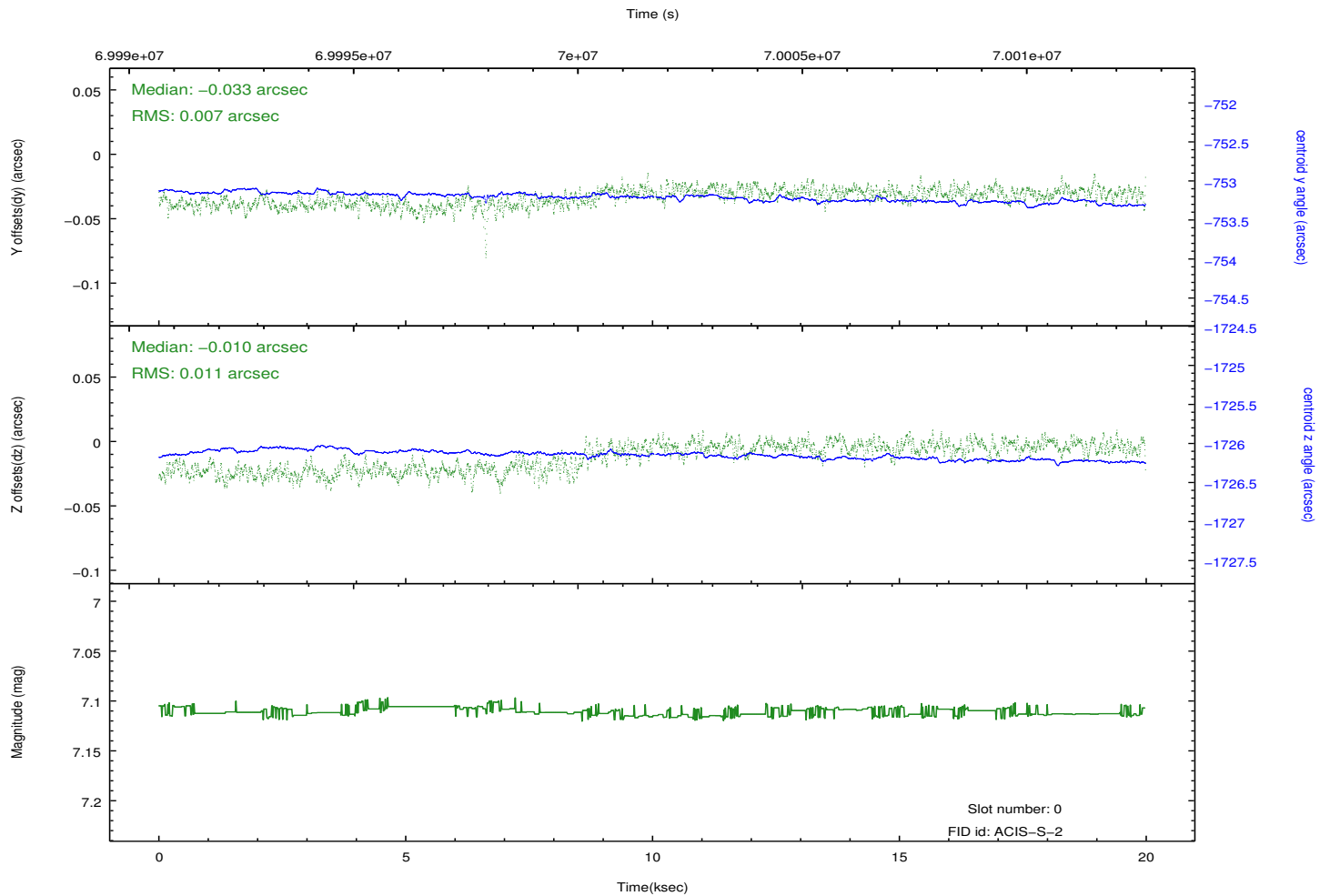
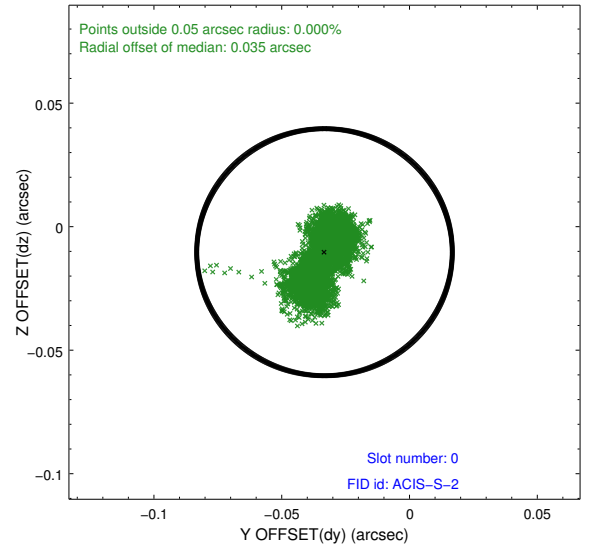
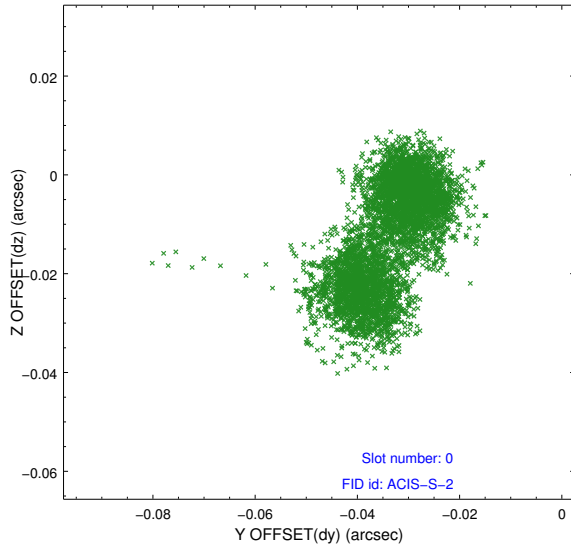


2.4.5 Slot 7

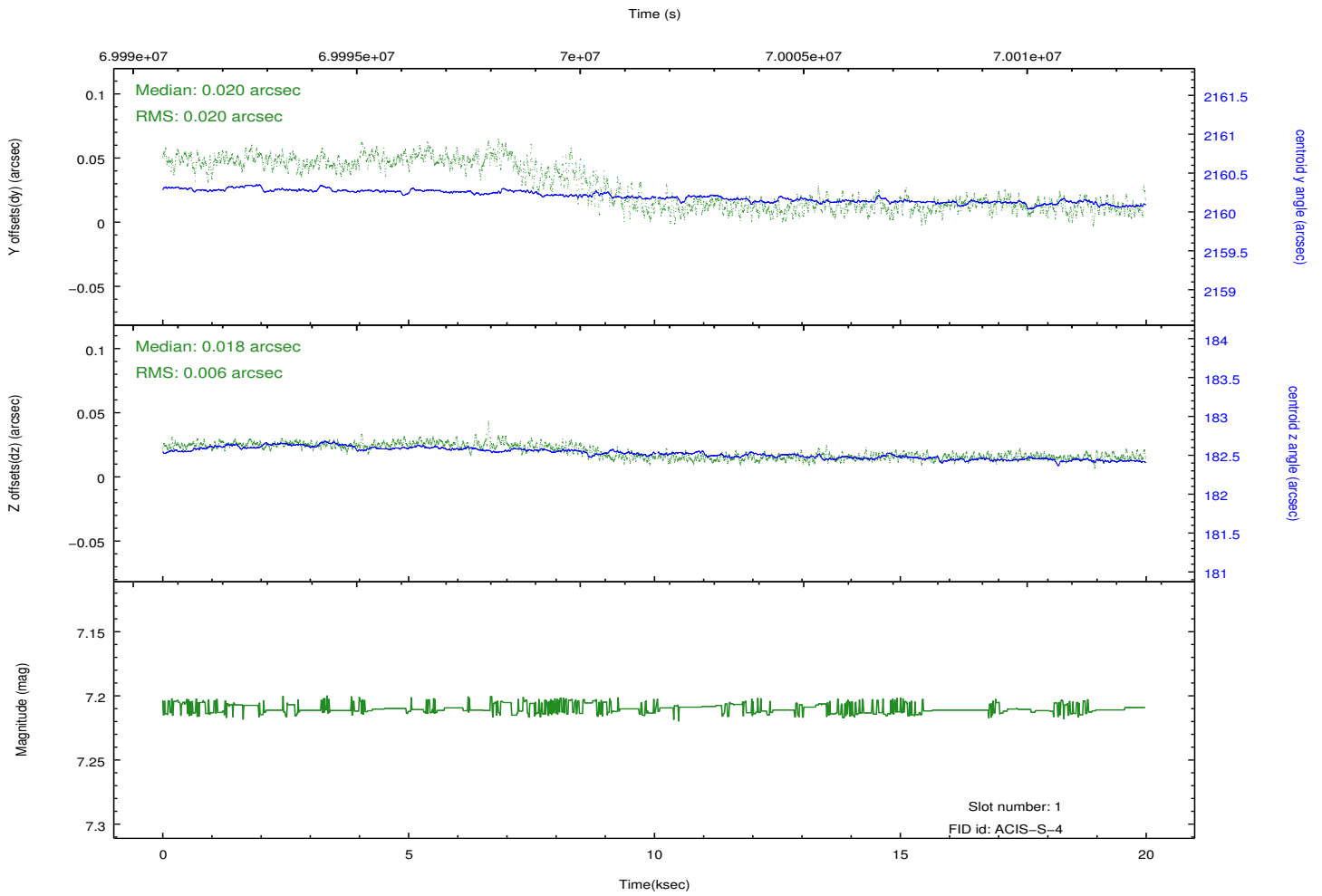
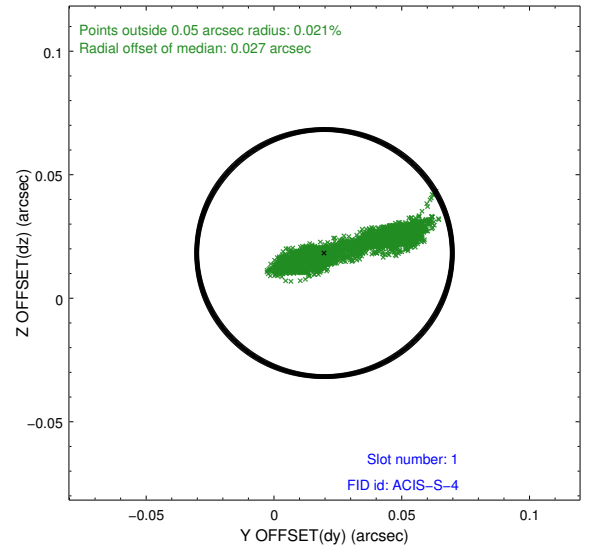
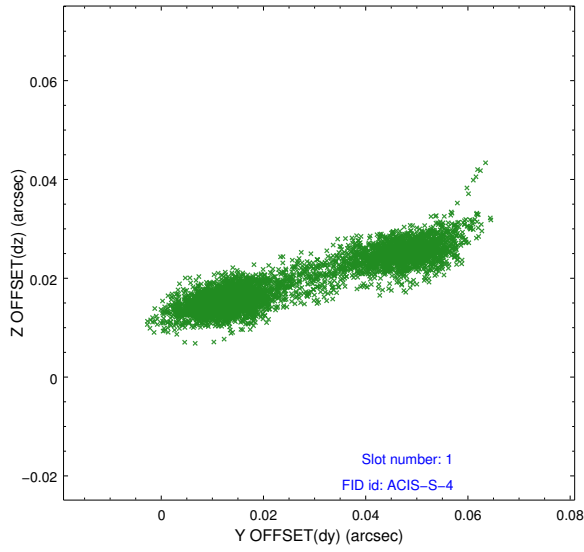


2.5 FID Slots

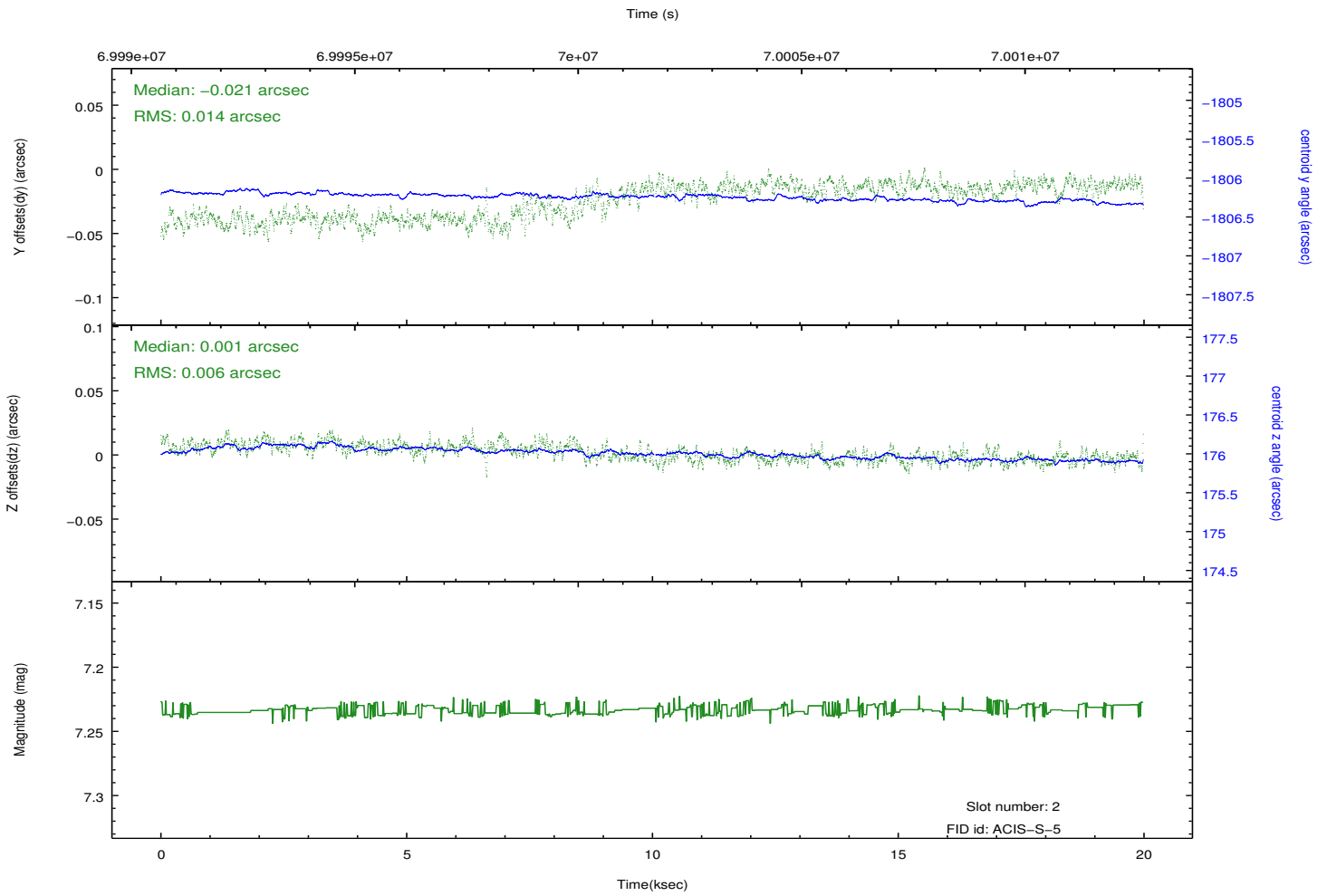
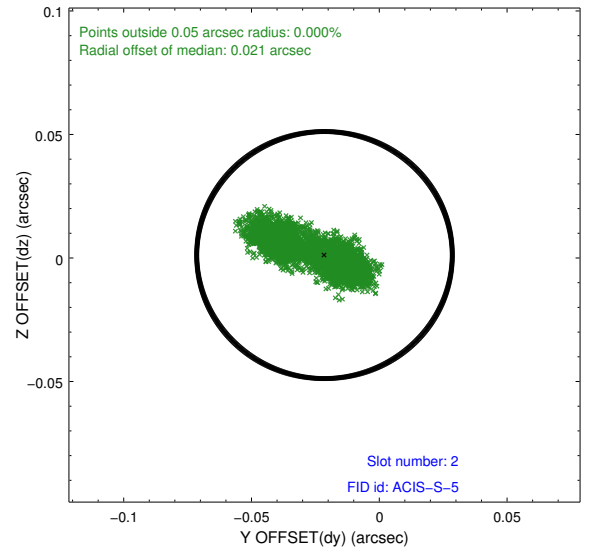
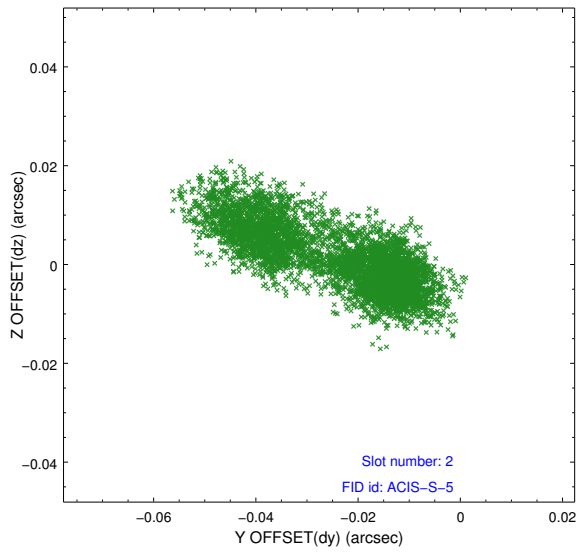
2.5.1 Slot 0



2.5.2 Slot 1



2.5.3 Slot 2



A Summary

A.1 Status

V&V Scientist	Jen Lauer
V&V Date (YYYY-MM-DD)	2012.08.27
V&V Edition	1
V&V Disposition and Status	OK
V&V Charge Time	19.216

A.2 Comments