

V&V Reference Report

L2 ASCDS Version : 8.5.1.1

Observation 5947 - L2 Version 3
Chandra X-Ray Center

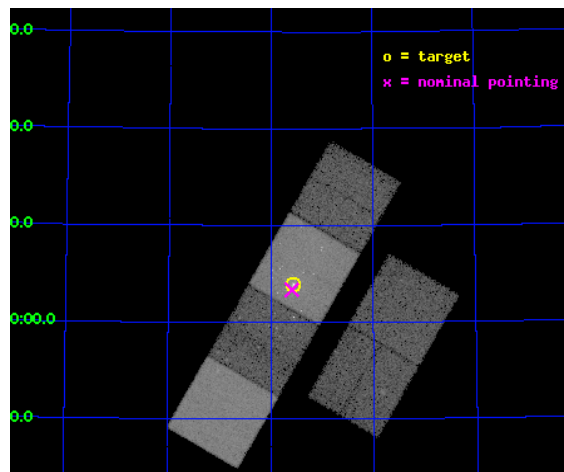
L2 Processing Date : Dec 25 2012

Contents

1	Front	2
2	OBI	3
2.1	OBI	3
2.1.1	Images	3
2.1.2	Bias	3
2.1.3	Parameters	4
2.1.4	Events	4
2.2	Compared Parameters	5
2.3	Aspect	6
2.4	Star Slots	9
2.4.1	Slot 3	9
2.4.2	Slot 4	10
2.4.3	Slot 5	11
2.4.4	Slot 6	12
2.4.5	Slot 7	13
2.5	FID Slots	14
2.5.1	Slot 0	14
2.5.2	Slot 1	15
2.5.3	Slot 2	16
A	Summary	17
A.1	Status	17
A.2	Comments	17

1 Front

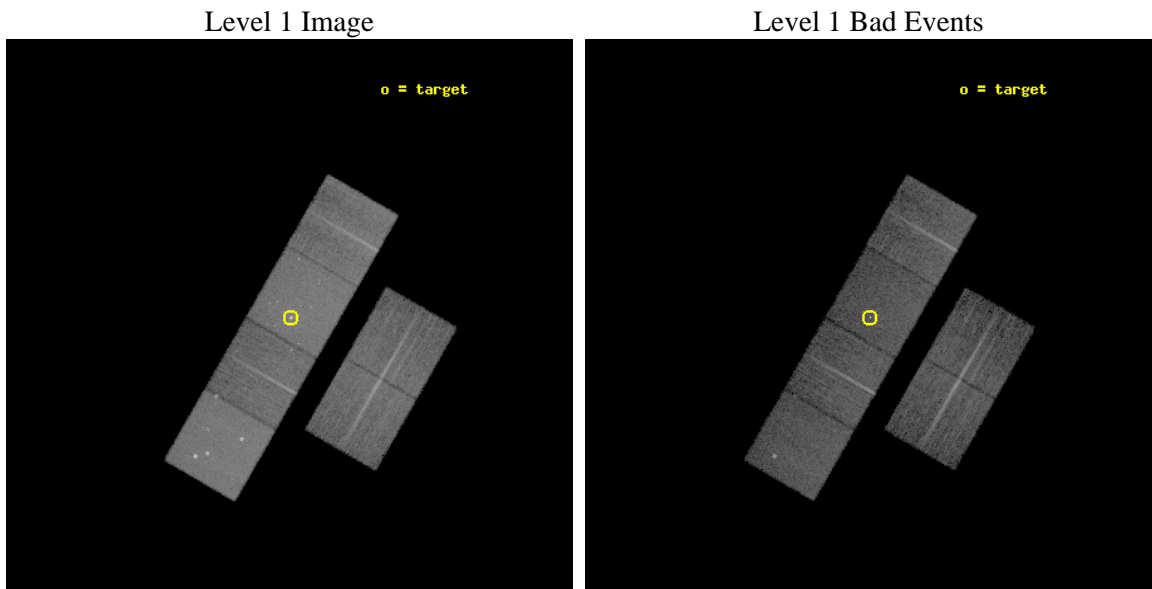
seq_num	600466	Sequence number
obs_id	5947	Observation id
title	An Unprecedented View of a Galaxy's Dynamic X-ray Source Population	
observer	Prof. David Pooley	Principal investigator
object	M81	Source name
dtcycle	0	
cycle	P	events from which exps? Prim/Second/Both
ra_targ	148.888333	Observer's specified target RA [deg]
dec_targ	69.065306	Observer's specified target Dec [deg]
ra_nom	148.89761856673	Nominal RA [deg]
dec_nom	69.05617782477	Nominal Dec [deg]
roll_nom	300.03654164603	Nominal Roll [deg]
revision	3	Processing version of data
ontime	10835.192171872	Sum of GTIs [s]
livetime	10697.990444422	Livetime [s]
ontime2	10835.199959636	Sum of GTIs [s]
ontime3	10835.06907177	Sum of GTIs [s]
ontime5	10835.151131868	Sum of GTIs [s]
ontime6	10835.110111773	Sum of GTIs [s]
ontime7	10835.192171872	Sum of GTIs [s]
ontime8	10831.786951989	Sum of GTIs [s]
l2events	216490	Number of level 2 events



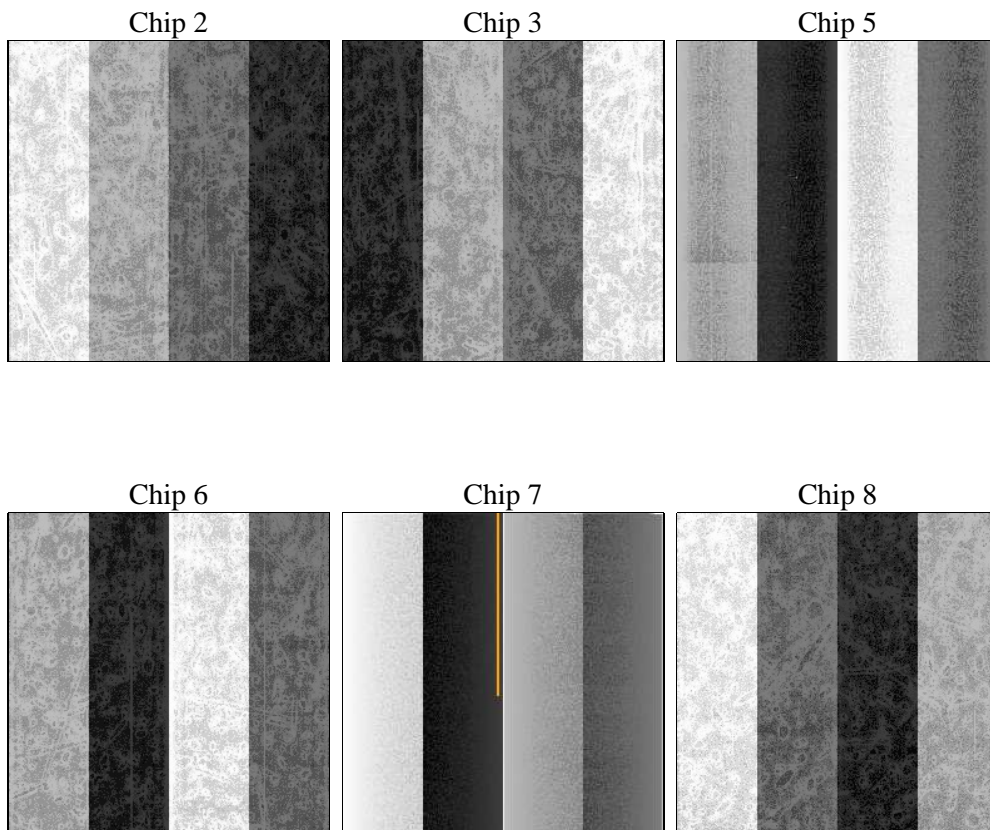
2 OBI

2.1 OBI

2.1.1 Images



2.1.2 Bias



2.1.3 Parameters

obi_num	0	Obi number	sched_exp_time	11081.997000	[s] Scheduled observation exposure time
ascdsver	8.5.1.1	Processing system revision	ontime	10835.192171872	Sum of GTIs [s]
caldbver	4.5.5	 	ontime2	10835.199959636	Sum of GTIs [s]
date	2012-12-25T06:45:28	Date and time of file creation	ontime3	10835.06907177	Sum of GTIs [s]
revision	3	Processing version of data	ontime5	10835.151131868	Sum of GTIs [s]
			ontime6	10835.110111773	Sum of GTIs [s]
			ontime7	10835.192171872	Sum of GTIs [s]
			ontime8	10831.786951989	Sum of GTIs [s]
			l1events	705593	Number of level 1 events

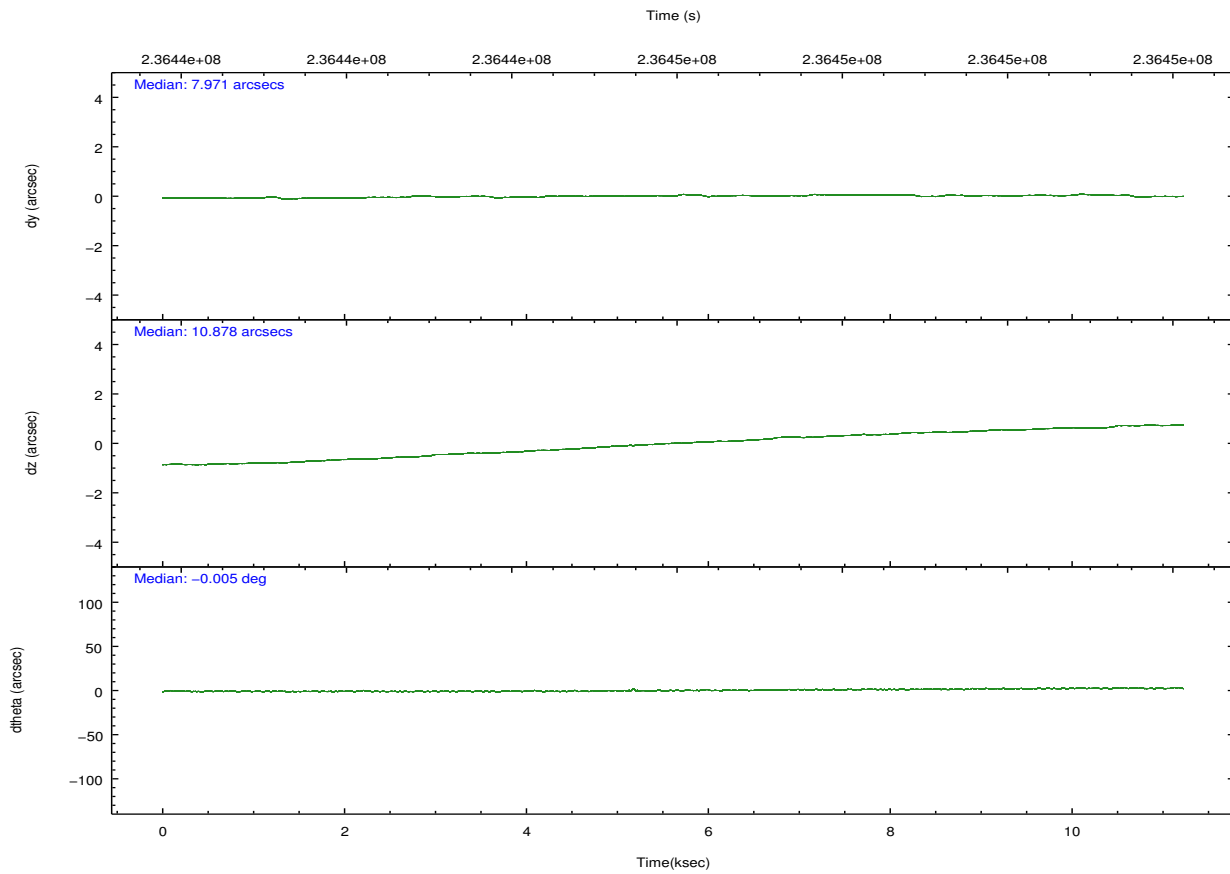
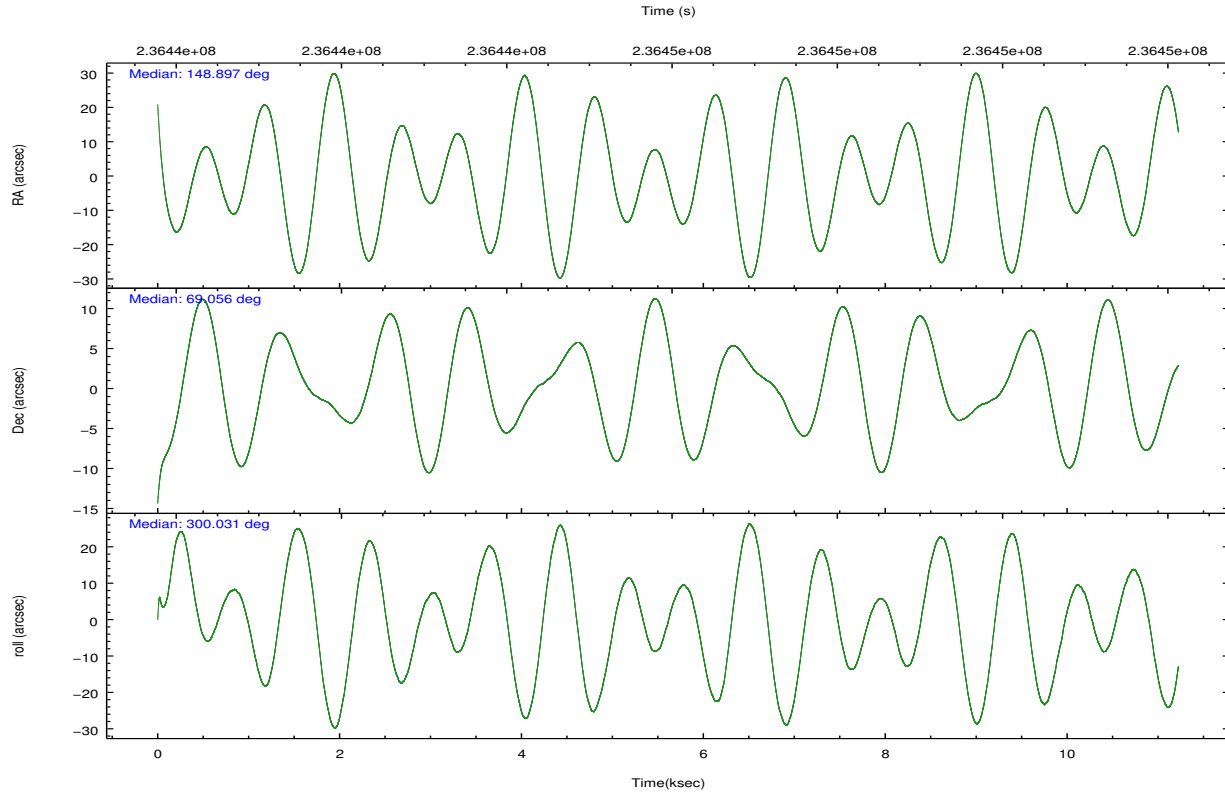
2.1.4 Events

	ccd 2	ccd 3	ccd 5	ccd 6	ccd 7	ccd 8		ccd 2	ccd 3	ccd 5	ccd 6	ccd 7	ccd 8
level 1 events	95960	90082	152022	98946	147962	120621	grade 0 events	11463	11113	11153	12593	8170	14879
rejected events	77277	71807	72554	77874	72509	88060		11%	12%	7%	12%	5%	12%
rejected %	80%	79%	47%	78%	49%	73%	grade 1 events	106	111	299	92	184	113
								0%	0%	0%	0%	0%	0%
							grade 2 events	2912	2717	23214	3347	14574	5861
								3%	3%	15%	3%	9%	4%
							grade 3 events	1186	1208	3191	1364	6233	2851
								1%	1%	2%	1%	4%	2%
							grade 4 events	1210	1216	3026	1330	6233	2727
								1%	1%	1%	1%	4%	2%
							grade 5 events	3449	3798	9806	4091	11470	5138
								3%	4%	6%	4%	7%	4%
							grade 6 events	1927	2029	38930	2450	40281	6259
								2%	2%	25%	2%	27%	5%
							grade 7 events	73707	67890	62403	73679	60817	82793
								76%	75%	41%	74%	41%	68%

2.2 Compared Parameters

Parameter	Planned	Actual	Parameter	Planned	Actual
Instrument	ACIS	ACIS	Obspar format version number	7	7
Detector	ACIS-235678	ACIS-235678	Obspar file type	PREDICTED	ACTUAL
Grating	NONE	NONE	Obspar update status	NONE	UPDATED
Data mode	FAINT	FAINT	Number of optional ACIS chips dropped	0	0
Observation mode	POINTING	POINTING	On-chip summing requested	N	N
[deg] Pointing RA	148.831014	148.8976185667287	Subarray requested	NONE	NONE
[deg] Pointing Dec	69.069461	69.05617782477024	Alternating exposures requested	N	N
[deg] Pointing Roll	299.942099	300.0365416460301	[s] Primary exposure time	0.000000	3.2
[mm] SIM focus pos	-0.684267	-0.6828225247311905			
[mm] SIM defocus	0	0.001444936568705701			
[mm] SIM translation stage pos	-190.132523	-190.1425803651734			
[mm] SIM translation stage offset	0	0.01005778216563158			
[s] Observation start time (MET)	236440480.184000	236439281.2663			
Observation start date	2005-06-29T13:53:36	2005-06-29T13:34:41			
[s] Observation end time (MET)	236451562.184000	236451788.82937			
Observation end date	2005-06-29T16:58:18	2005-06-29T17:03:08			
Read mode	TIMED	TIMED			

2.3 Aspect

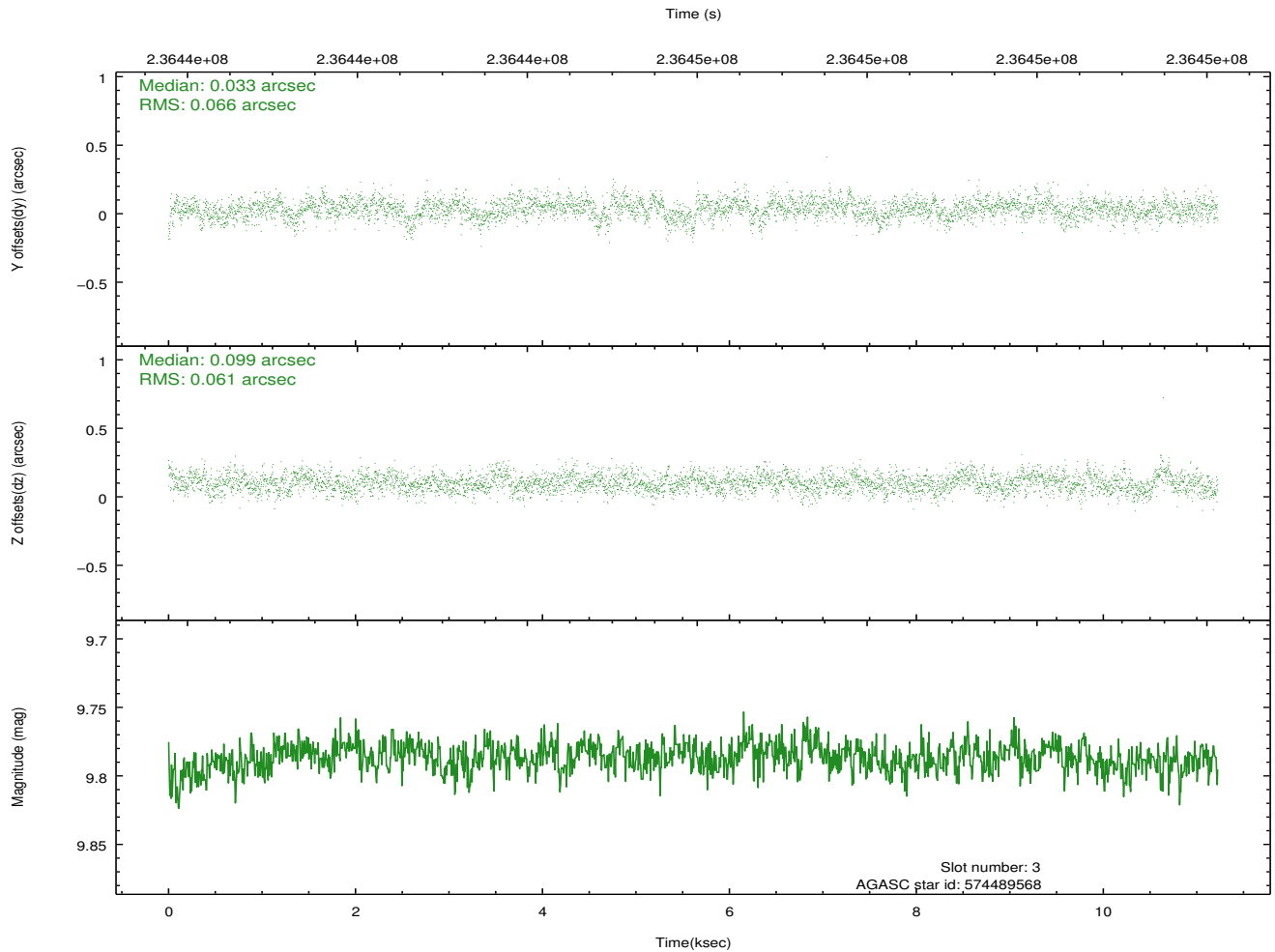
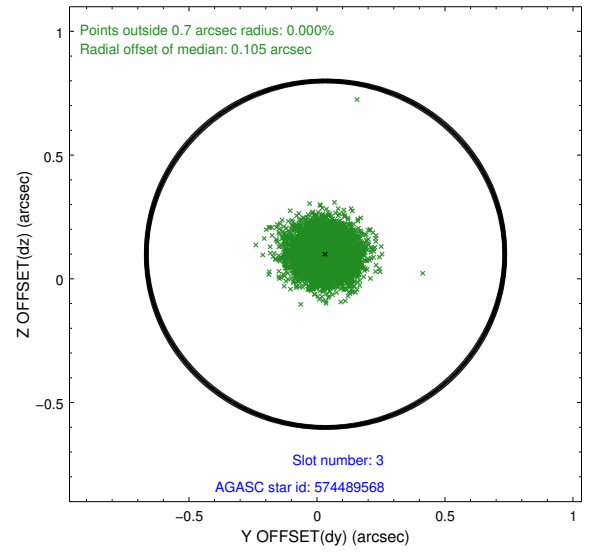
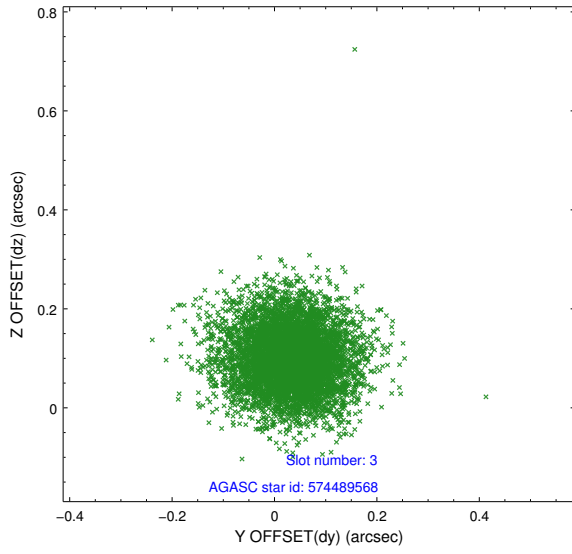


Slot Statistics

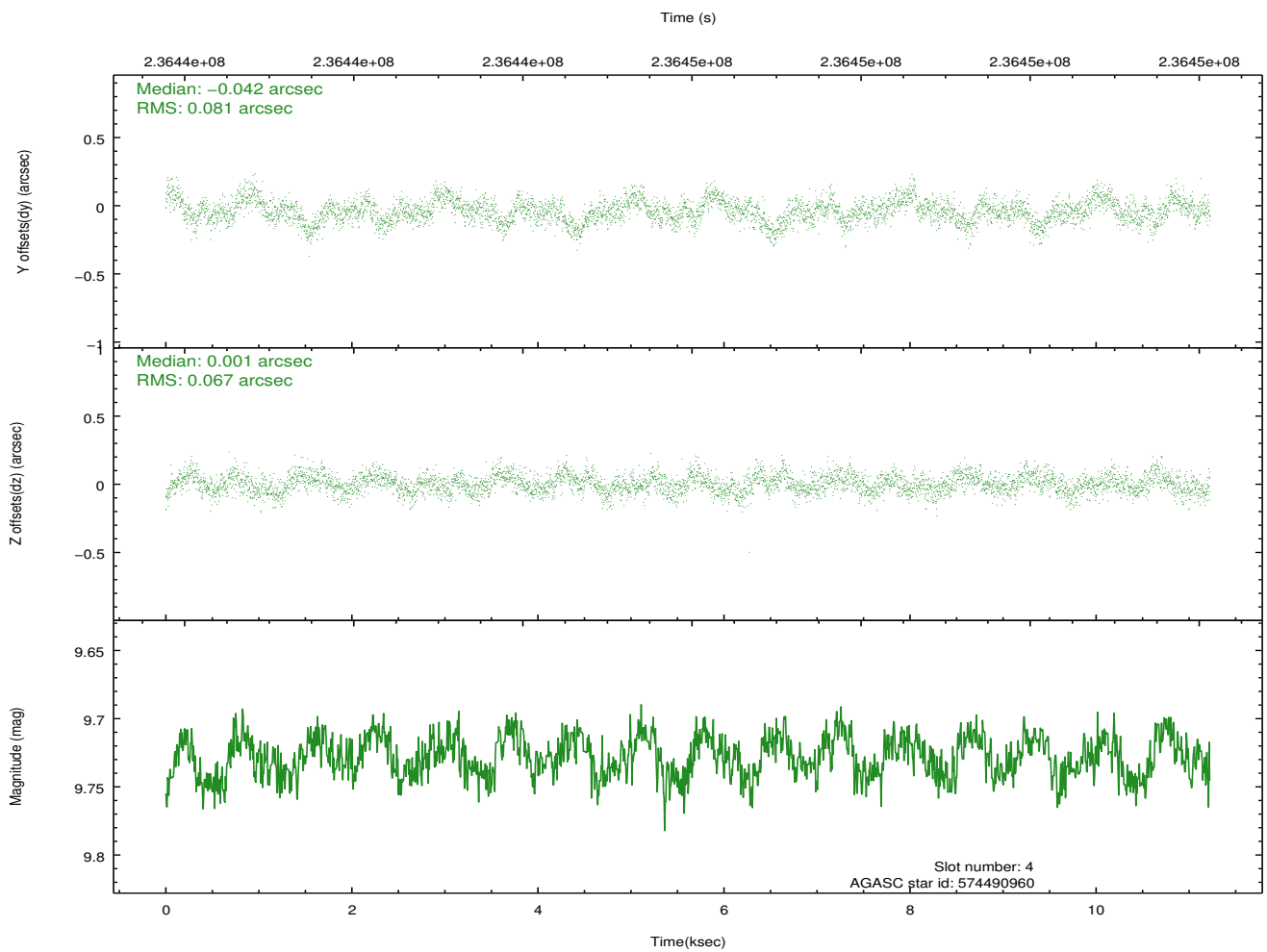
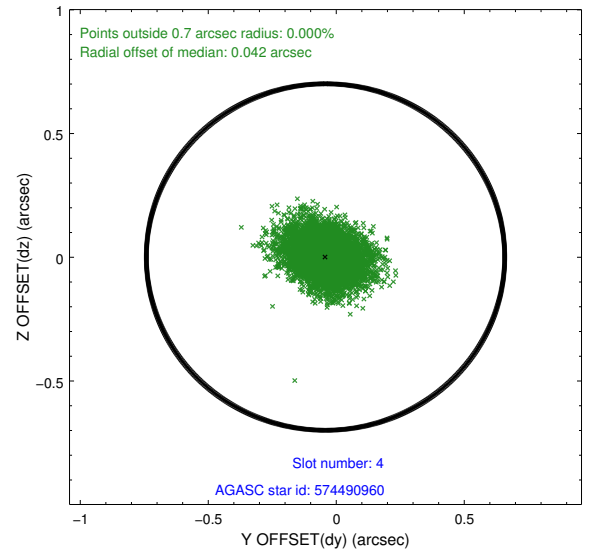
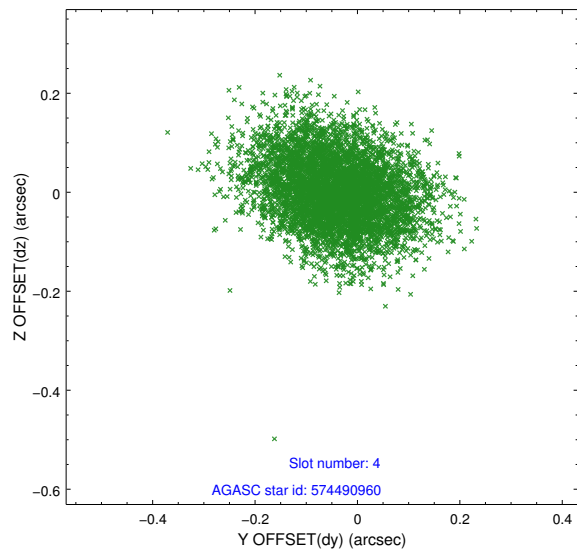
slot	status	id	mag	n_pts	med_dy	med_dz	dr1	dr2	ra	dec	mean_y	mean_z
0	FID	ACIS-S-1	7.19	2738	0.020	-0.073	0.024	0.041	0.000000	0.000000	935.31	-1727.75
1	FID	ACIS-S-4	7.21	2738	0.084	0.045	0.015	0.027	0.000000	0.000000	2153.03	176.05
2	FID	ACIS-S-5	7.23	2738	-0.131	0.040	0.012	0.018	0.000000	0.000000	-1813.13	170.14
3	GUIDE	574489568	9.79	5468	0.033	0.099	0.095	0.156	147.223974	69.438157	-2186.84	-1084.37
4	GUIDE	574490960	9.73	5470	-0.042	0.001	0.112	0.184	148.185918	69.658768	-2245.04	361.43
5	GUIDE	574491280	9.34	5406	-0.021	-0.045	0.096	0.153	148.611567	69.450135	-1326.37	443.46
6	GUIDE	574497600	10.45	5470	0.093	-0.085	0.161	0.265	147.824120	68.451903	1252.99	-2257.33
7	GUIDE	574491184	9.06	5474	-0.066	0.026	0.085	0.135	148.582453	69.768699	-2335.94	988.54

2.4 Star Slots

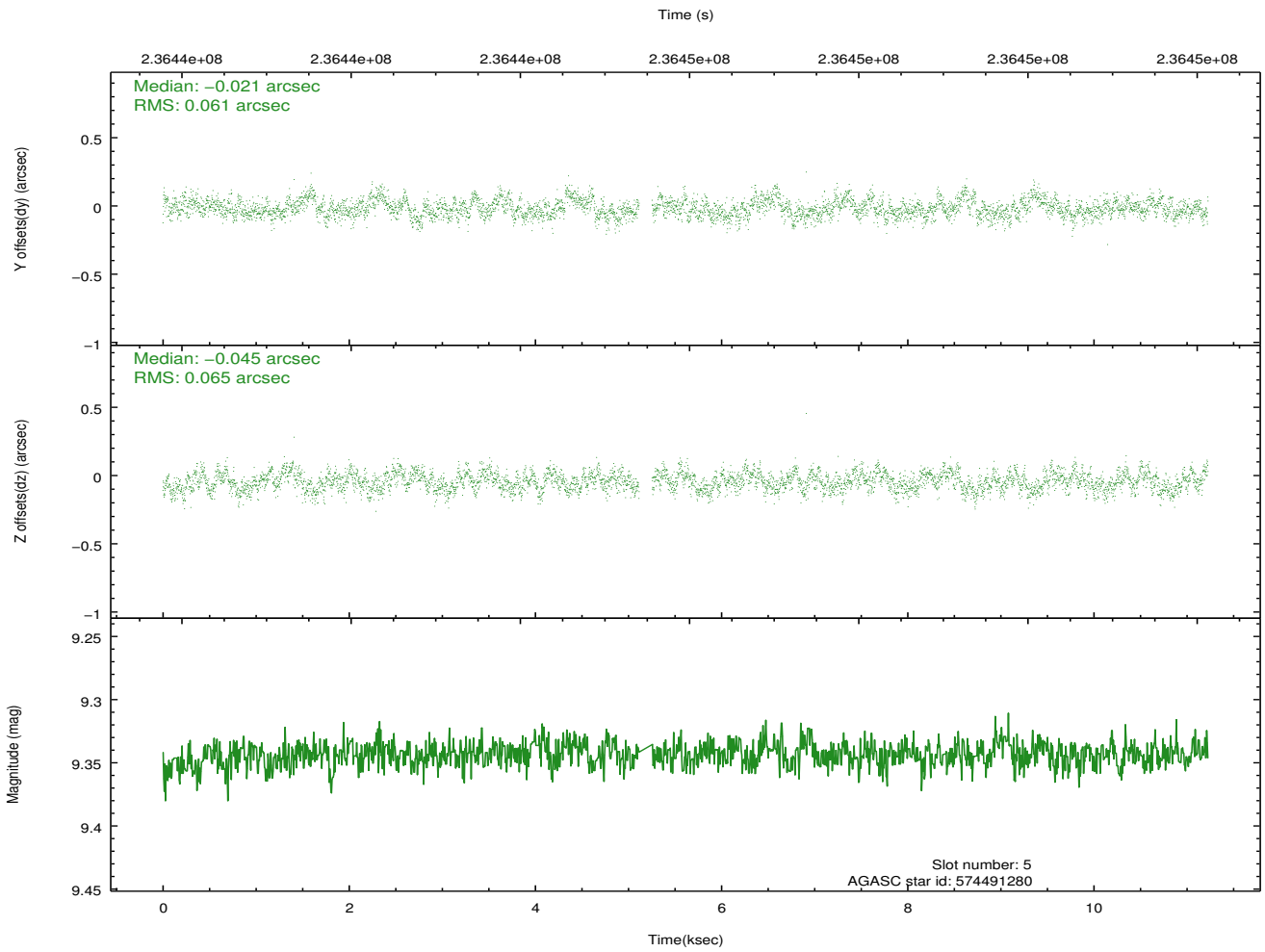
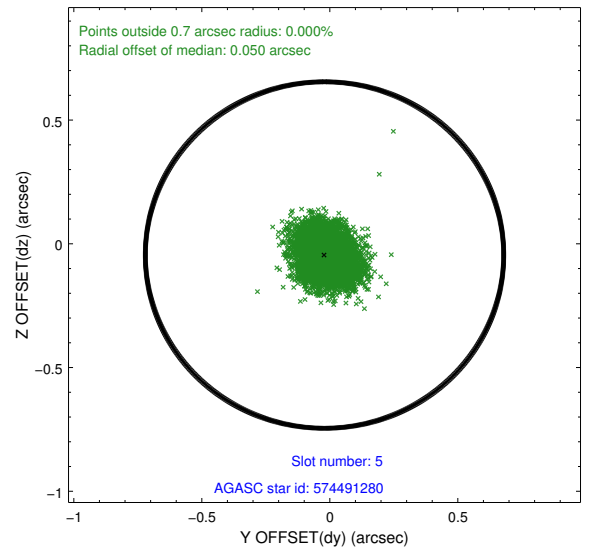
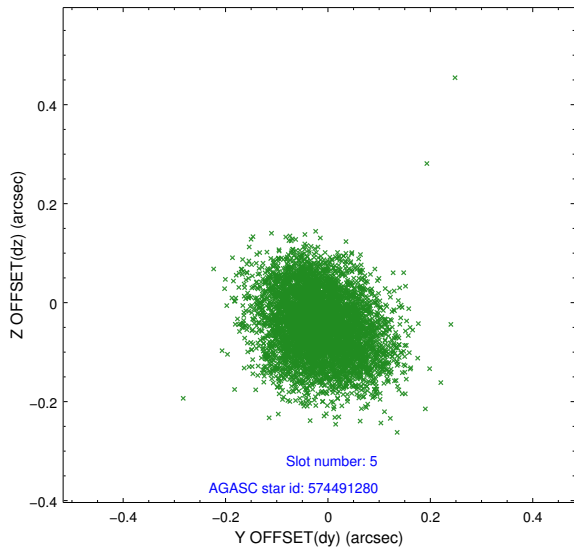
2.4.1 Slot 3



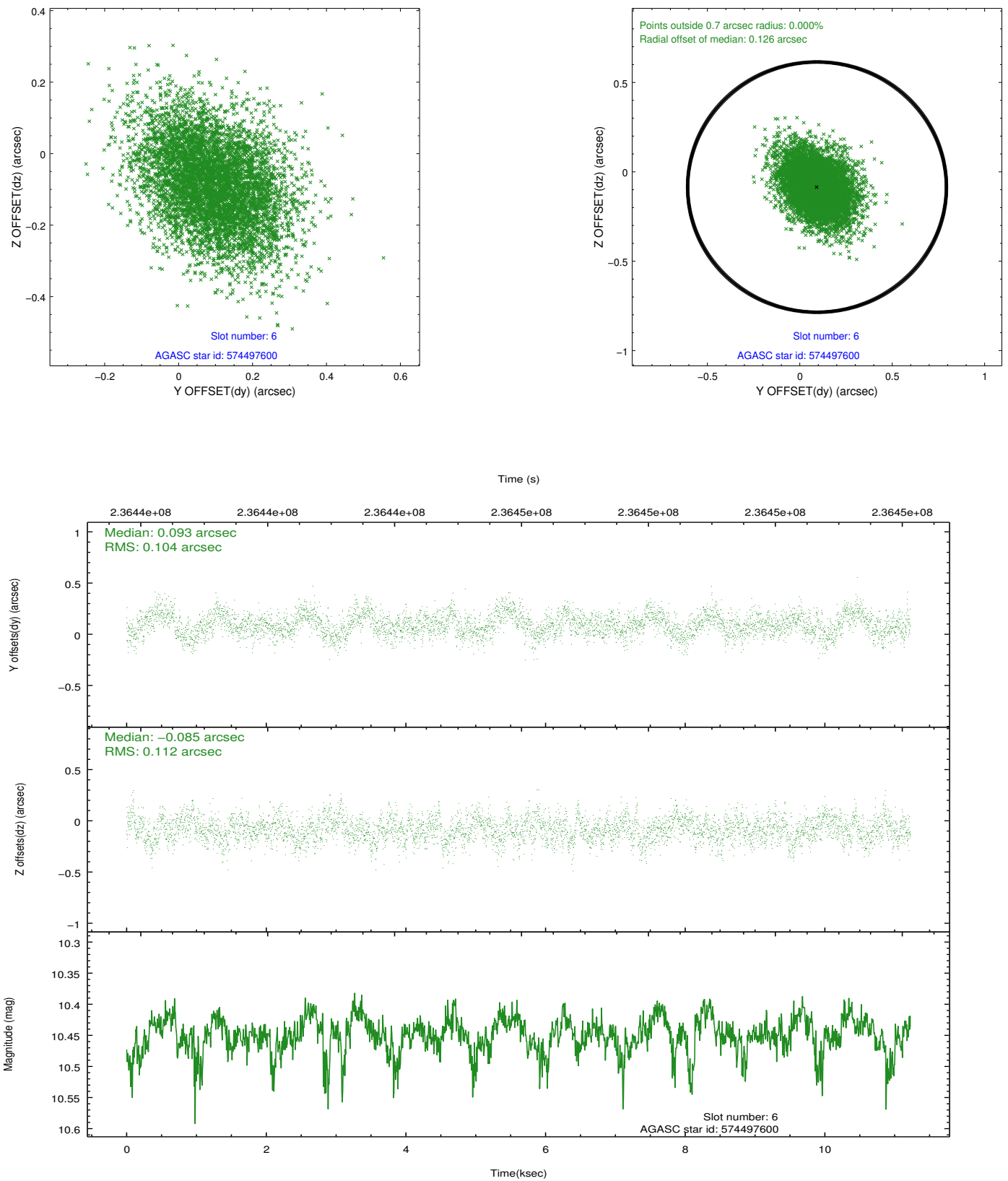
2.4.2 Slot 4



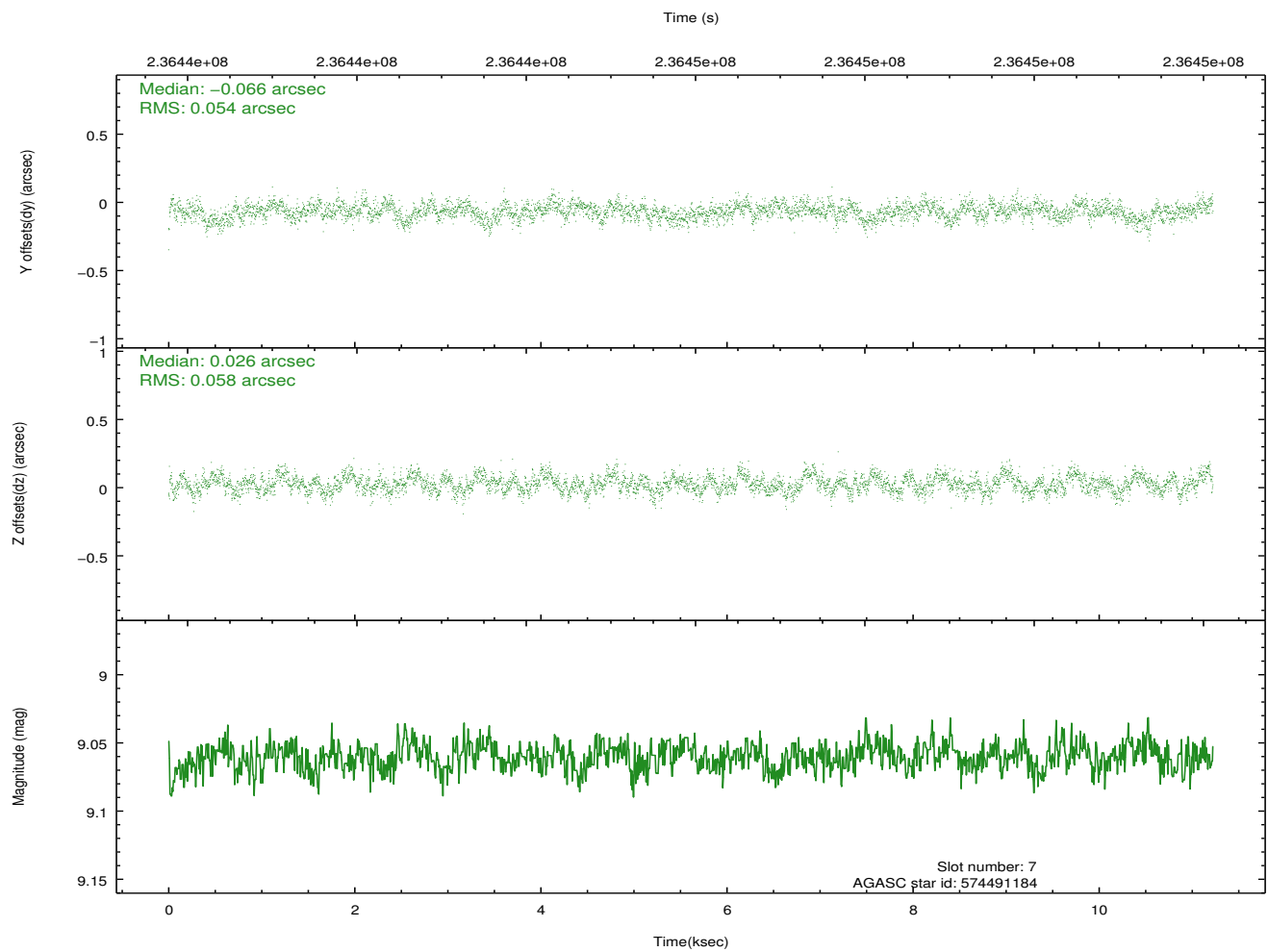
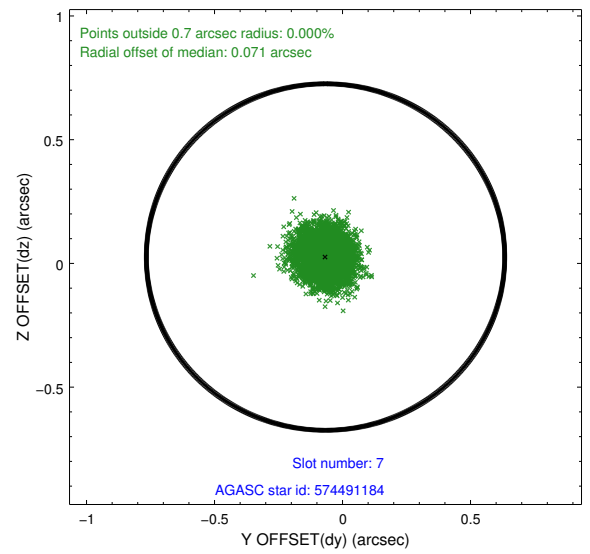
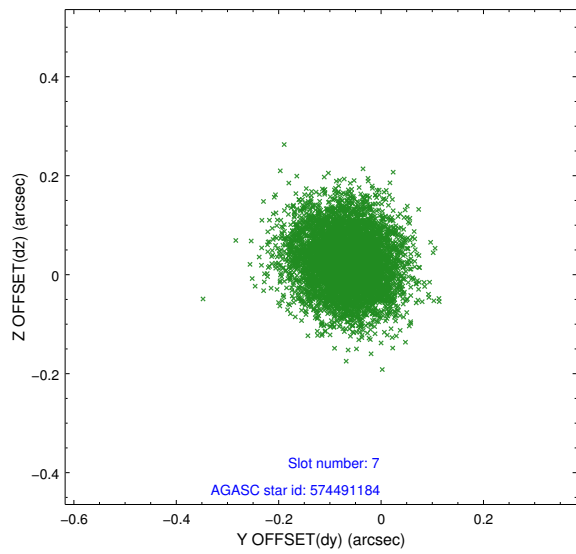
2.4.3 Slot 5



2.4.4 Slot 6

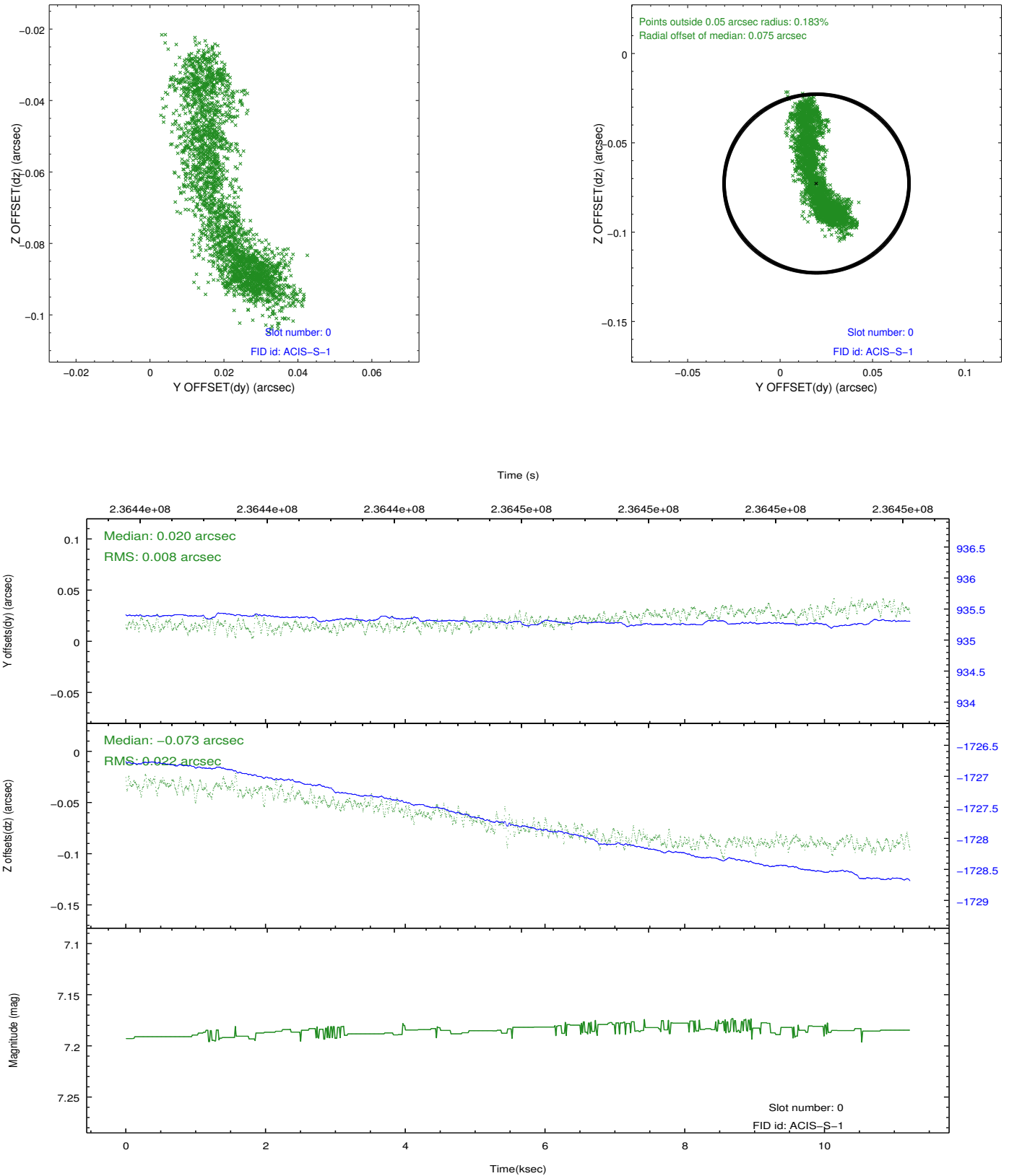


2.4.5 Slot 7

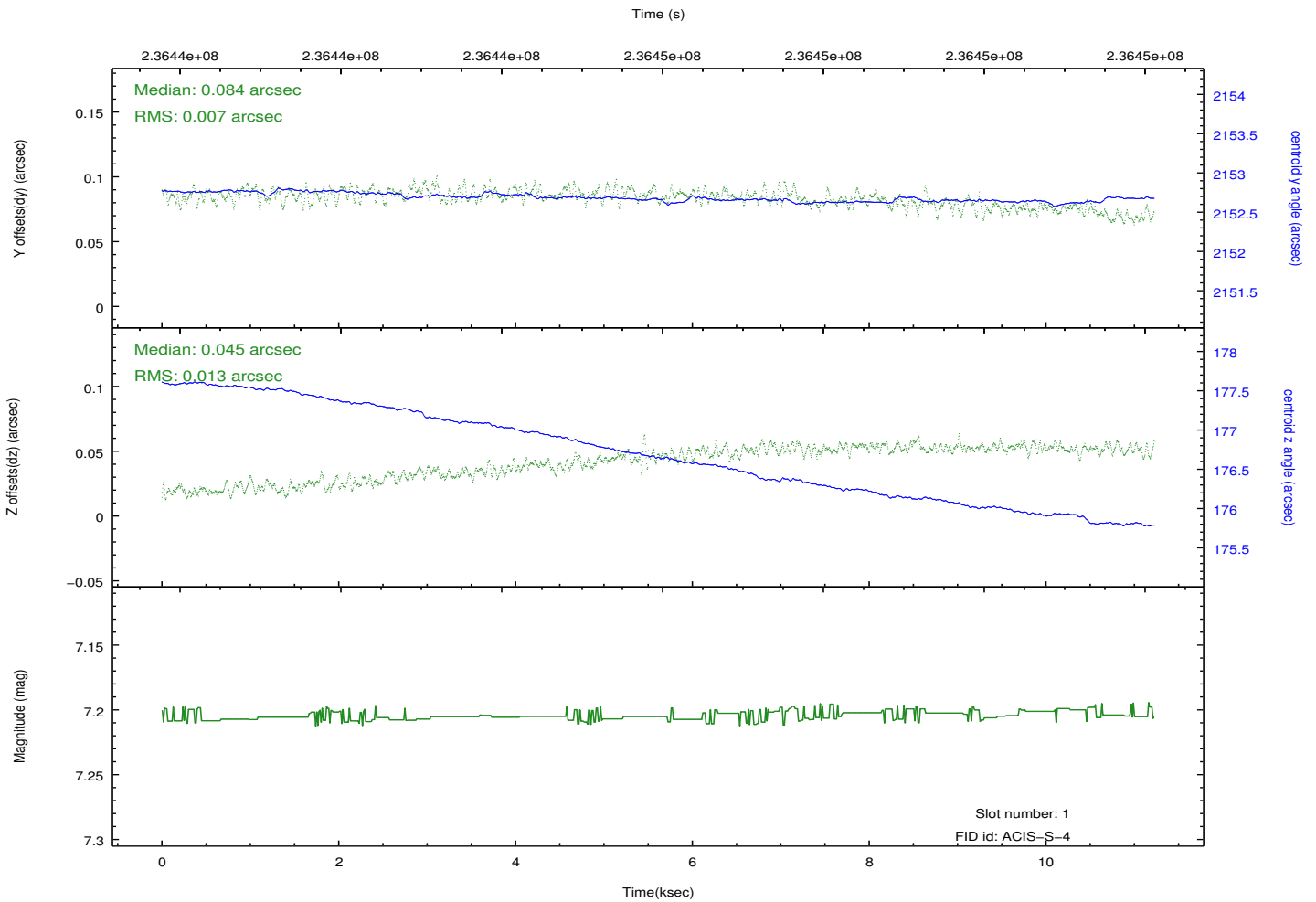
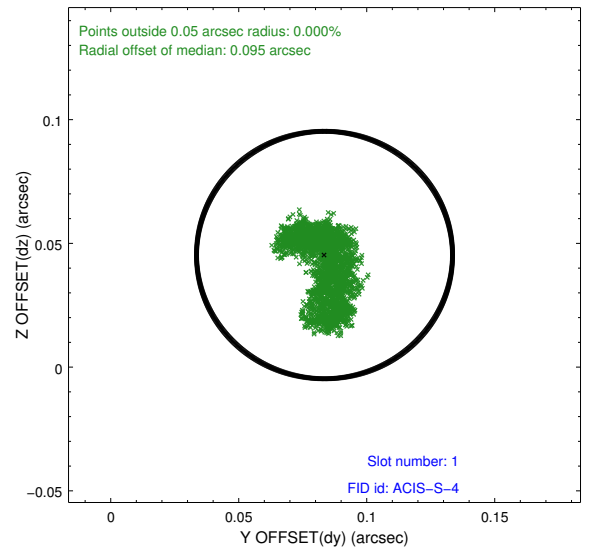
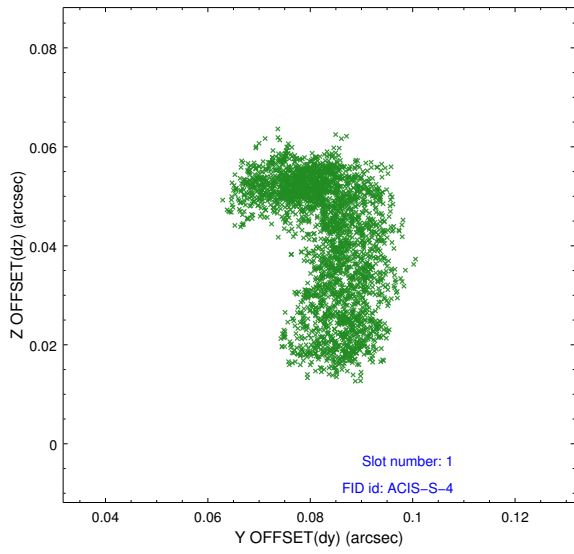


2.5 FID Slots

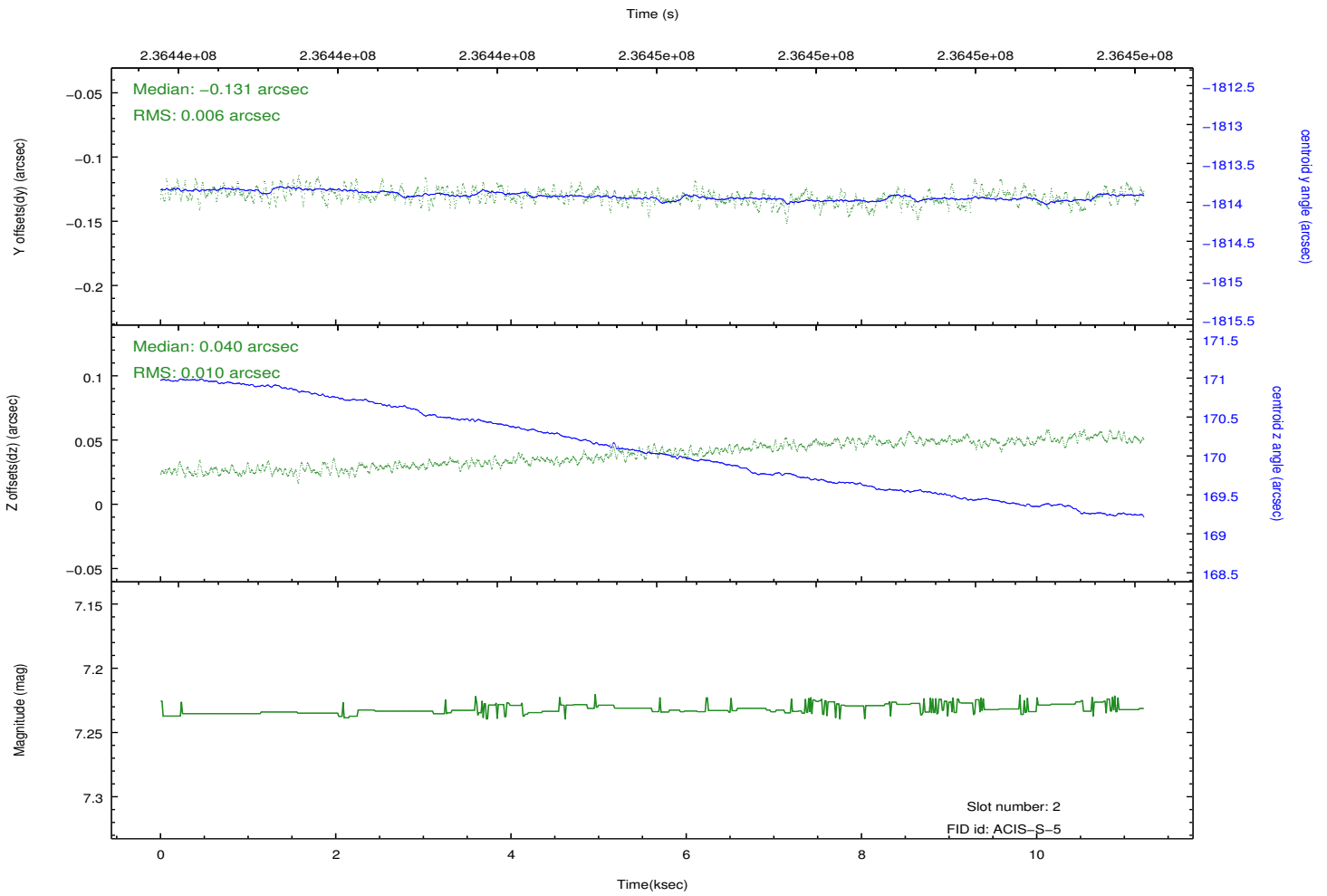
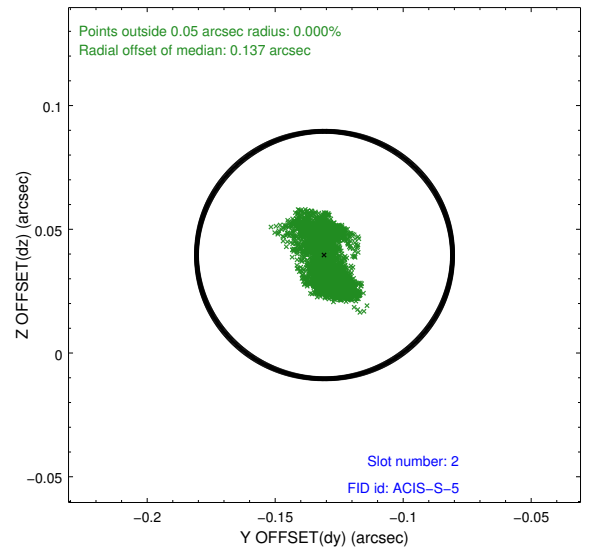
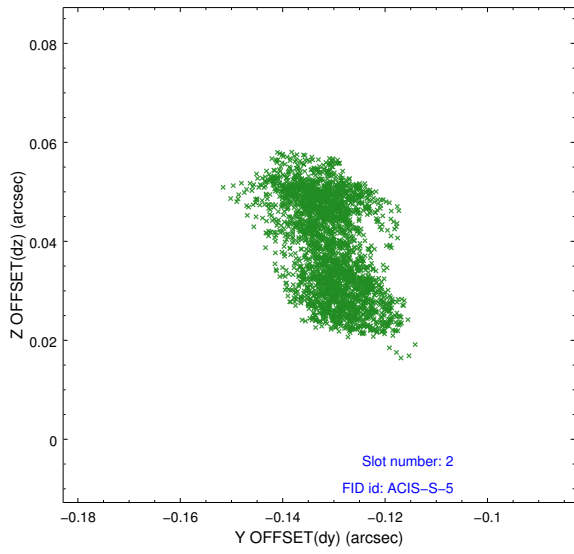
2.5.1 Slot 0



2.5.2 Slot 1



2.5.3 Slot 2



A Summary

A.1 Status

V&V Scientist	Jen Lauer
V&V Date (YYYY-MM-DD)	2013.01.17
V&V Edition	1
V&V Disposition and Status	OK
V&V Charge Time	10.83519

A.2 Comments

Roll preference not met by a fraction of a degree. Monitor constraint met.