

V&V Reference Report

L2 ASCDS Version : 8.5.1.1

Observation 597 - L2 Version 4
Chandra X-Ray Center

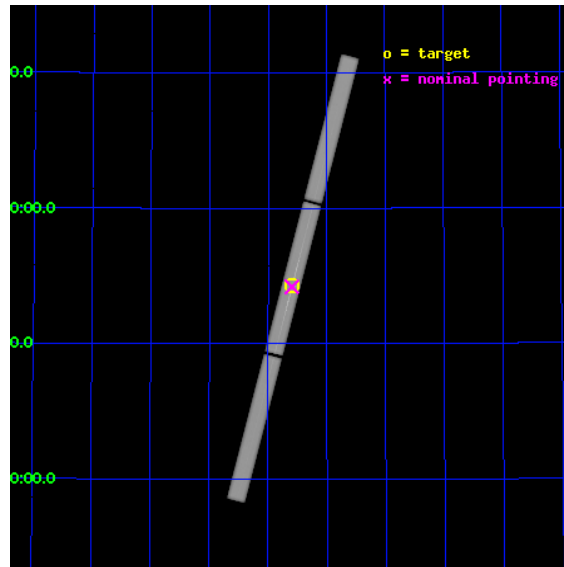
L2 Processing Date : Jan 30 2013

Contents

1	Front	2
2	OBI	3
2.1	OBI	3
2.1.1	Images	3
2.1.2	Parameters	4
2.1.3	Events	4
2.2	Compared Parameters	5
2.3	Aspect	6
2.4	Star Slots	9
2.4.1	Slot 3	9
2.4.2	Slot 4	10
2.4.3	Slot 5	11
2.4.4	Slot 6	12
2.4.5	Slot 7	13
2.5	FID Slots	14
2.5.1	Slot 0	14
2.5.2	Slot 1	15
3	Gratings	16
3.1	LETG Arm	16
A	Summary	18
A.1	Status	18
A.2	Comments	18

1 Front

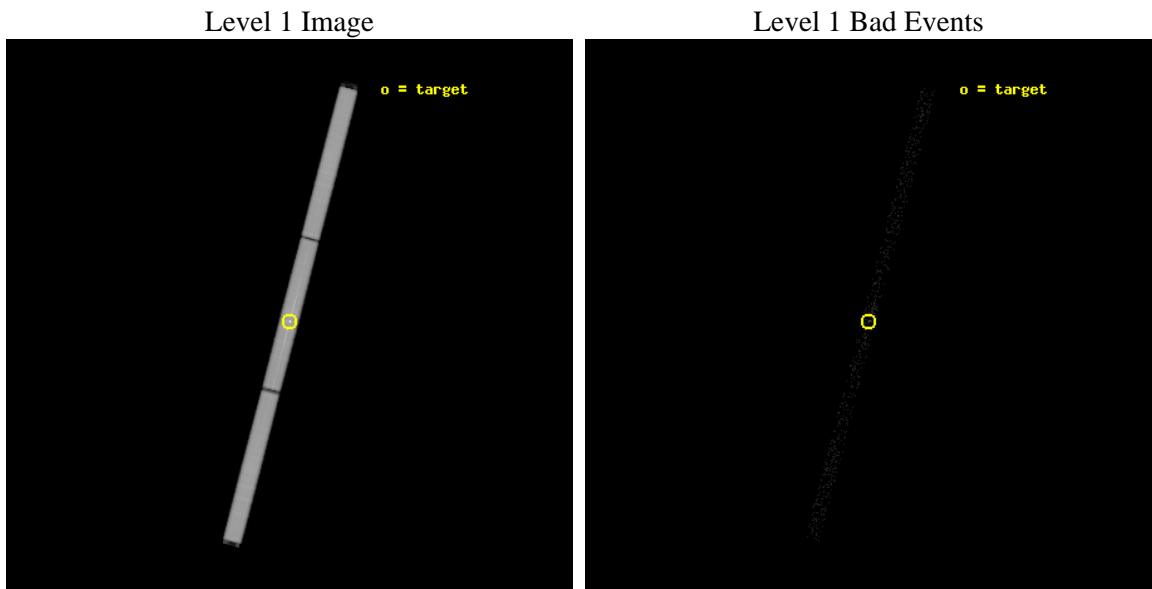
seq_num	200074	Sequence number
obs_id	597	Observation id
title	HIGH-RESOLUTION SPECTRUM OF UX ARI	Proposal title
observer	DR. ALBERT BRINKMAN	Principal investigator
object	UX ARI	Source name
ra_targ	51.6475	Observer's specified target RA [deg]
dec_targ	28.715139	Observer's specified target Dec [deg]
ra_nom	51.648675184585	Nominal RA [deg]
dec_nom	28.71043879187	Nominal Dec [deg]
roll_nom	284.55383871242	Nominal Roll [deg]
revision	4	Processing version of data
ontime	116909.71075316	[s]
livetime	116235.15939676	Ontime multiplied by DTCOR
l2events	5446781	Number of level 2 events



2 OBI

2.1 OBI

2.1.1 Images



2.1.2 Parameters

obi_num	0	Obi number	sched_exp_time	116455.282000	[s] Scheduled observation exposure time
ascdsver	8.5.1.1	Processing system revision	ontime	116909.71075615	[s]
caldbver	4.5.5	 	l1events	7547192	Number of level 1 events
date	2013-01-29T21:26:21	Date and time of file creation			
revision	4	Processing version of data			

2.1.3 Events

Level 1 Events

	segment 1	segment 2	segment 3
level 1 events	2499467	2587977	2459748
rejected events	12783	12495	12883
rejected %	0%	0%	0%

2.2 Compared Parameters

Parameter	Planned	Actual	Parameter	Planned	Actual
Instrument	HRC	HRC	Obspar format		
Detector	HRC-S	HRC-S	version number	7	7
Grating	LETG	LETG	Obspar file type	PREDICTED	ACTUAL
Data mode	OBSERVING	OBSERVING	Obspar update status	NONE	UPDATED
Observation mode	POINTING	POINTING			
[deg] Pointing RA	51.624686	51.6486751845847			
[deg] Pointing Dec	28.729937	28.71043879186984			
[deg] Pointing Roll	284.498027	284.5538387124165			
[s] Window start time (MET)	97718464.184000	97718464.184000			
[s] Window stop time (MET)	98582464.184000	98582464.184000			
[mm] SIM focus pos	-1.429586	-1.428180813131781			
[mm] SIM defocus	0.1037507710433287	0.1051558262725154			
[mm] SIM translation stage pos	250.455976	250.466033080201			
[mm] SIM translation stage offset	0	-0.01005468664627074			
[s] Observation start time (MET)	98566823.184000	98566064.700121			
Observation start date	2001-02-14T19:39:19	2001-02-14T19:27:44			
[s] Observation end time (MET)	98683279.184000	98684905.254701			
Observation end date	2001-02-16T04:00:15	2001-02-16T04:28:25			

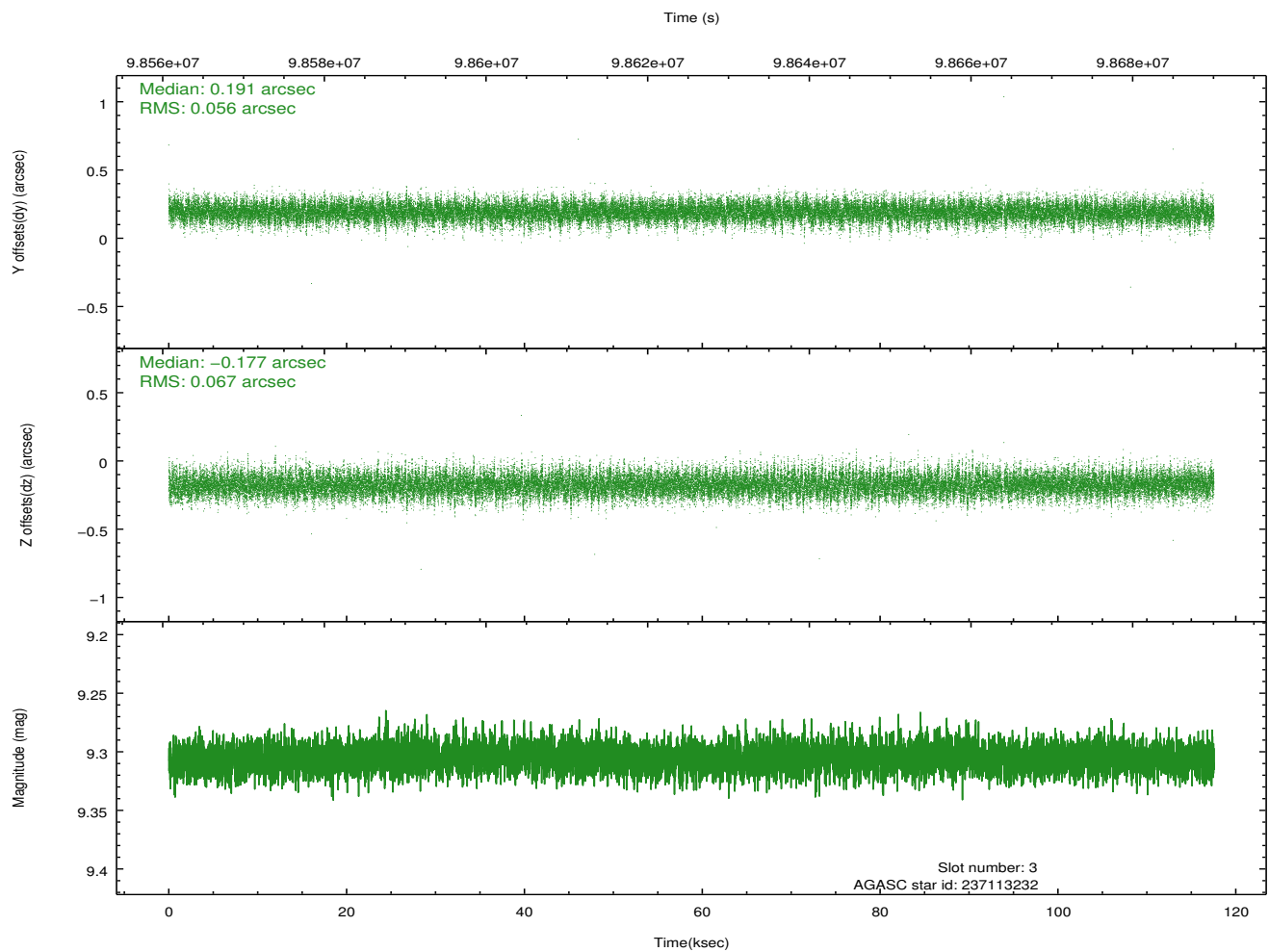
2.3 Aspect

Slot Statistics

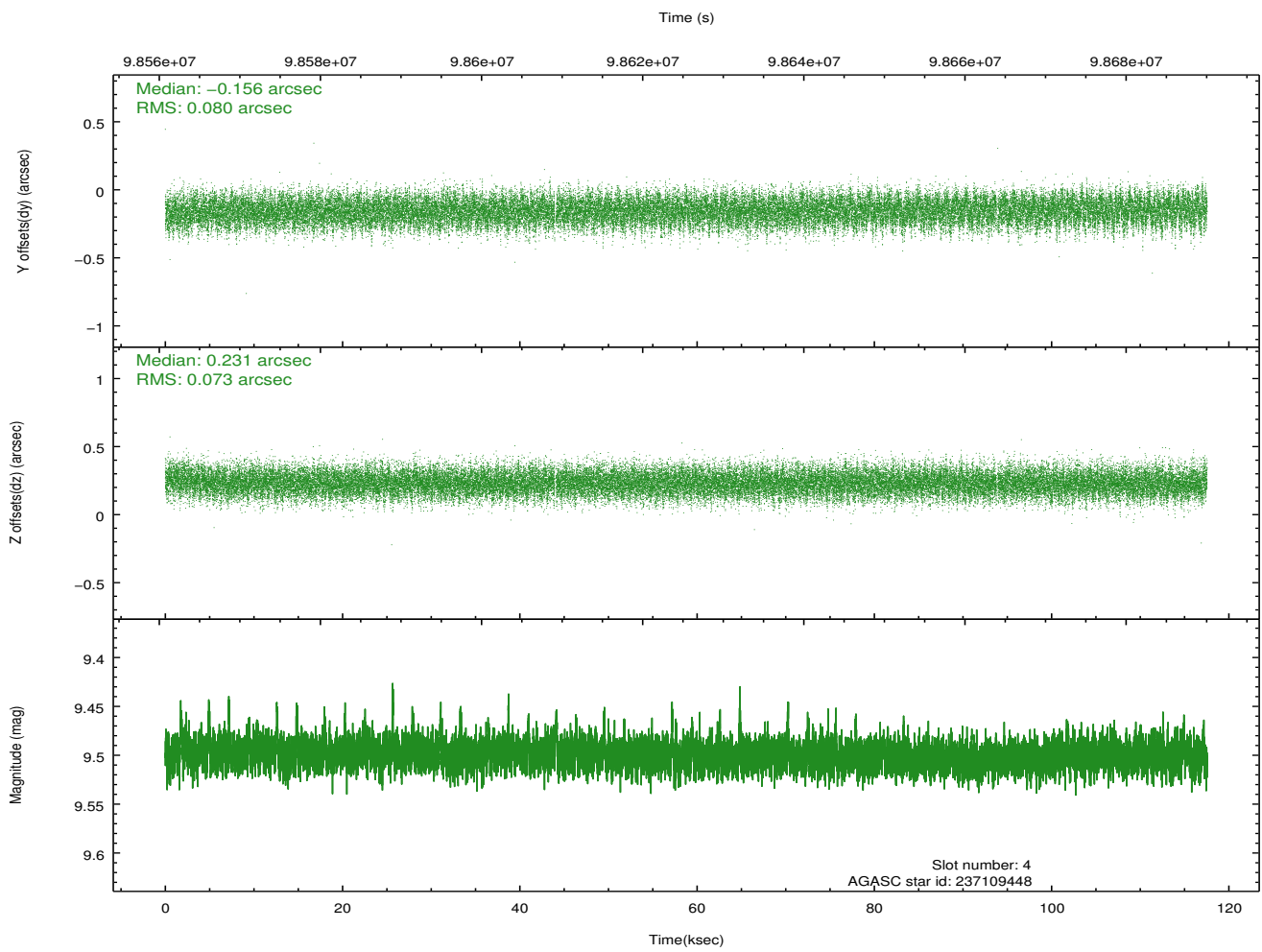
slot	status	id	mag	n_pts	med_dy	med_dz	dr1	dr2	ra	dec	mean_y	mean_z
0	FID	HRC-S-1	6.97	28536	0.124	-0.154	0.005	0.010	0.000000	0.000000	-1157.22	-453.85
1	FID	HRC-S-3	6.99	28535	0.125	-0.046	0.005	0.010	0.000000	0.000000	-1159.97	575.78
2	OMITTED		0.00	0	0.000	0.000	0.000	0.000	0.000000	0.000000	0.00	0.00
3	GUIDE	237113232	9.31	57229	0.191	-0.177	0.091	0.151	51.256732	28.716913	-246.12	-1136.18
4	GUIDE	237109448	9.50	57111	-0.156	0.231	0.116	0.183	52.023333	29.446877	-2187.62	1856.72
5	GUIDE	237115456	8.63	57255	-0.010	-0.087	0.075	0.119	51.067324	28.429895	600.98	-1977.67
6	GUIDE	237117144	9.85	57223	0.004	0.059	0.118	0.201	52.009286	28.685079	459.16	1136.12
7	GUIDE	237113488	9.96	57134	-0.030	-0.026	0.116	0.197	51.190590	29.012326	-1327.89	-1068.12

2.4 Star Slots

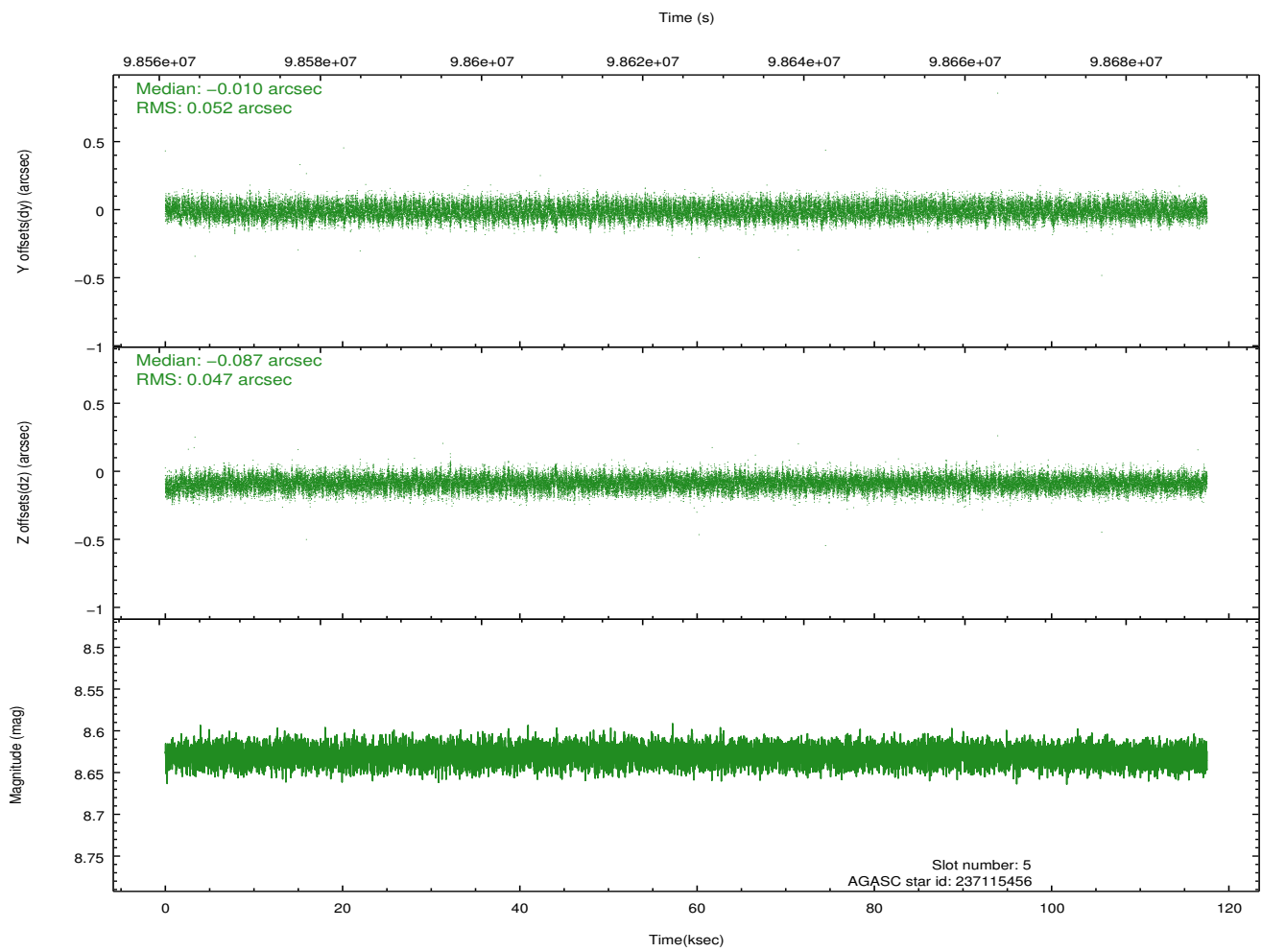
2.4.1 Slot 3



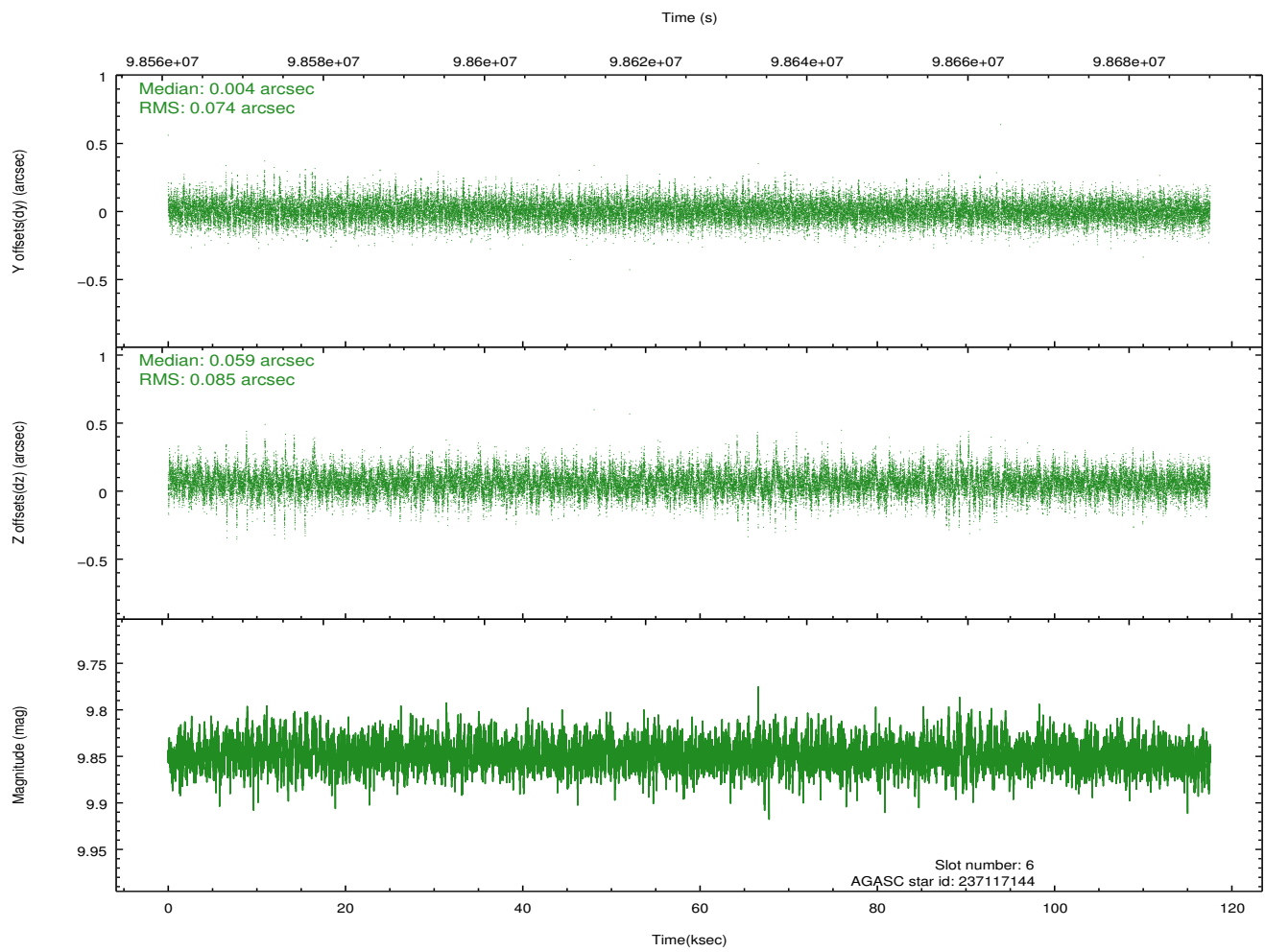
2.4.2 Slot 4



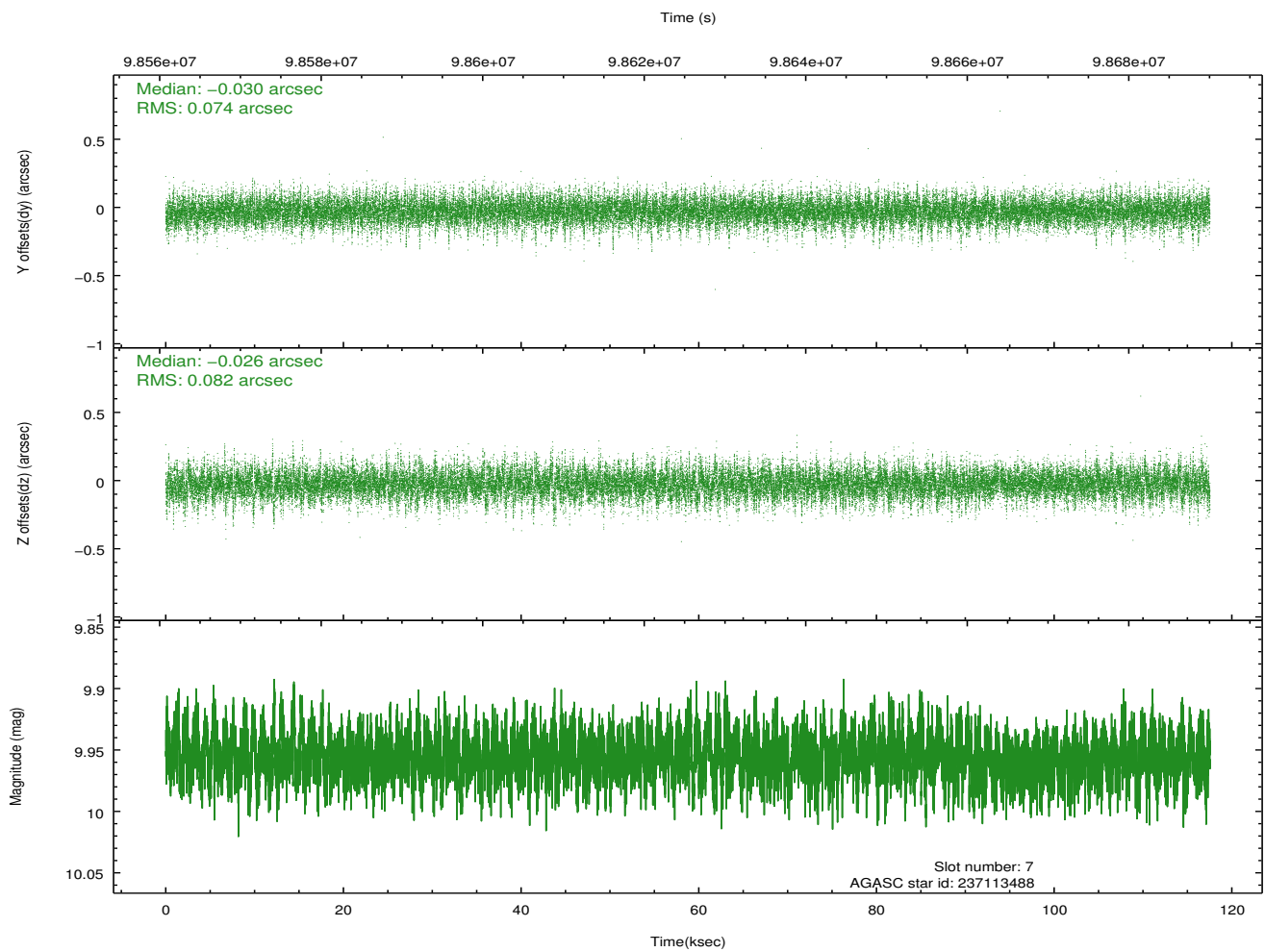
2.4.3 Slot 5



2.4.4 Slot 6

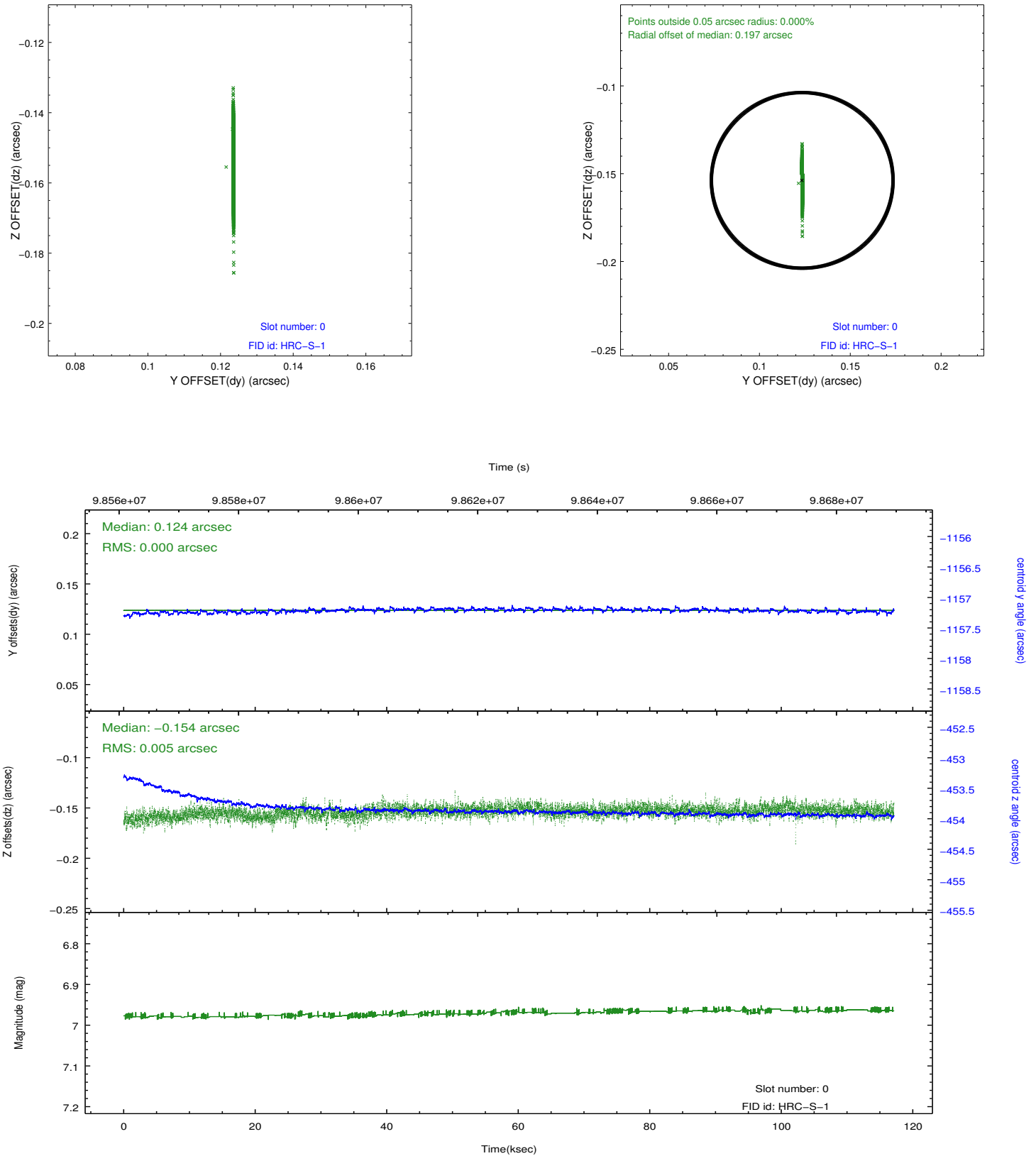


2.4.5 Slot 7

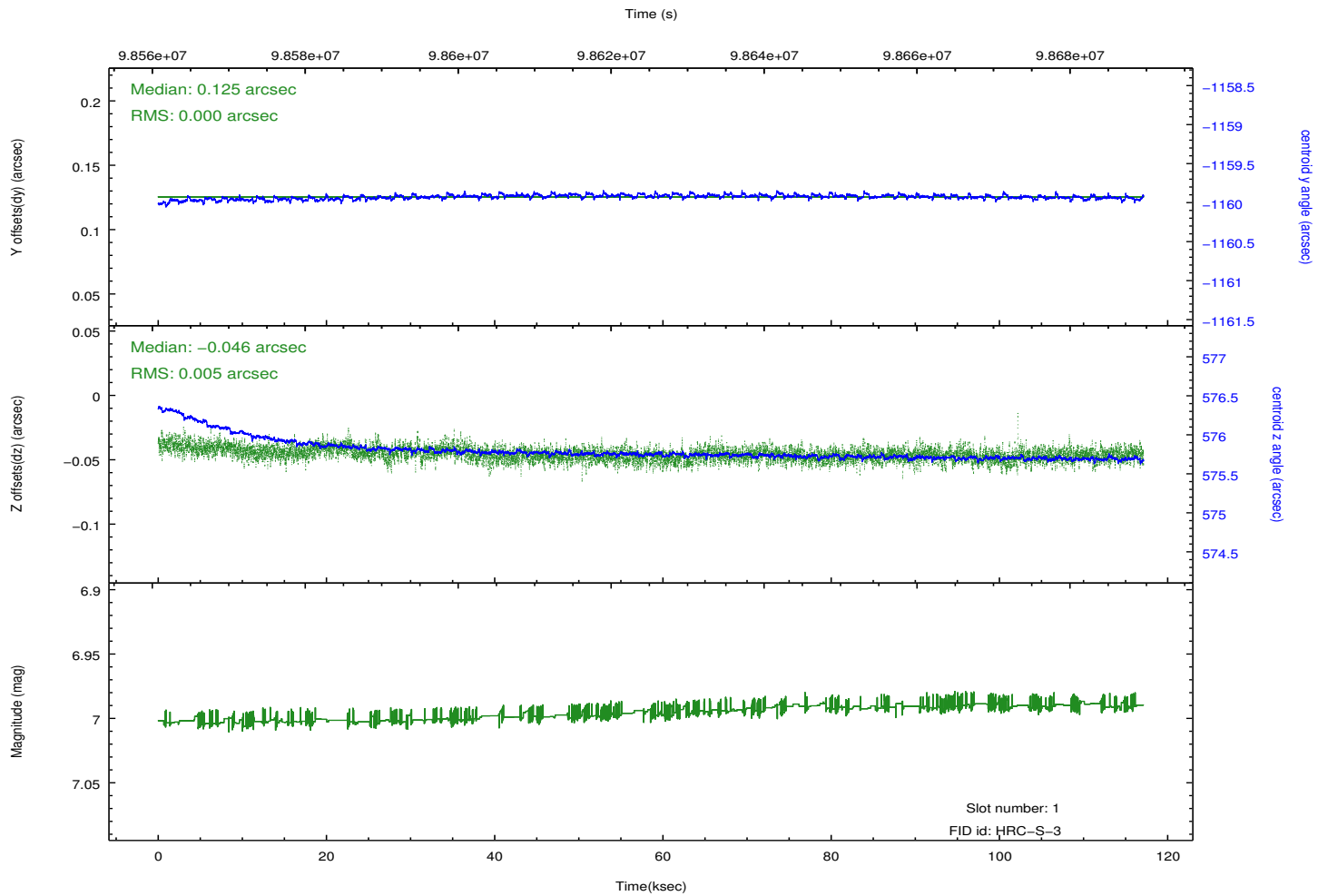
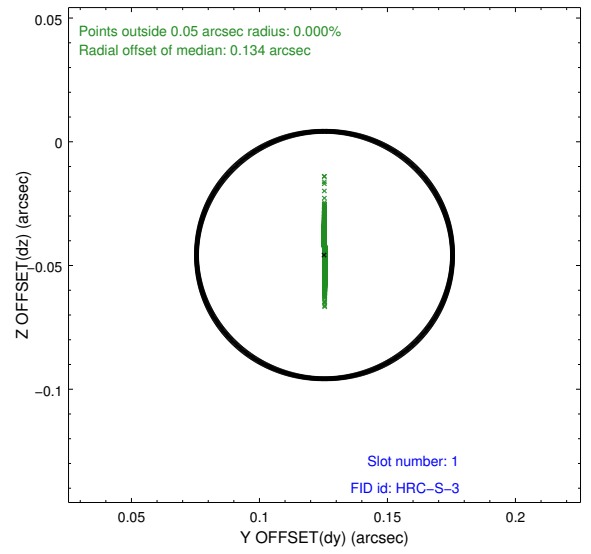
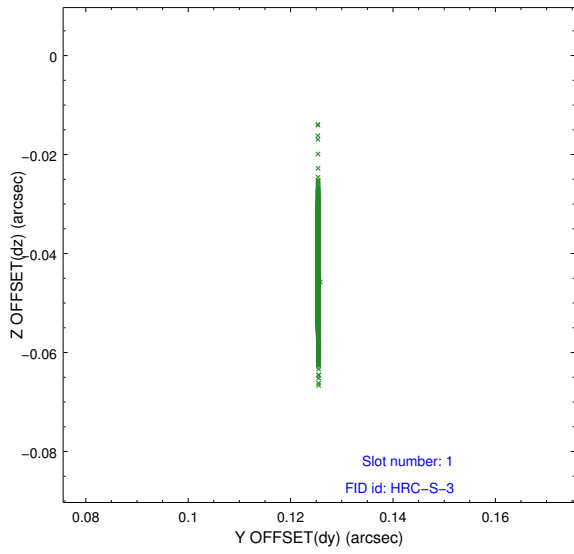


2.5 FID Slots

2.5.1 Slot 0

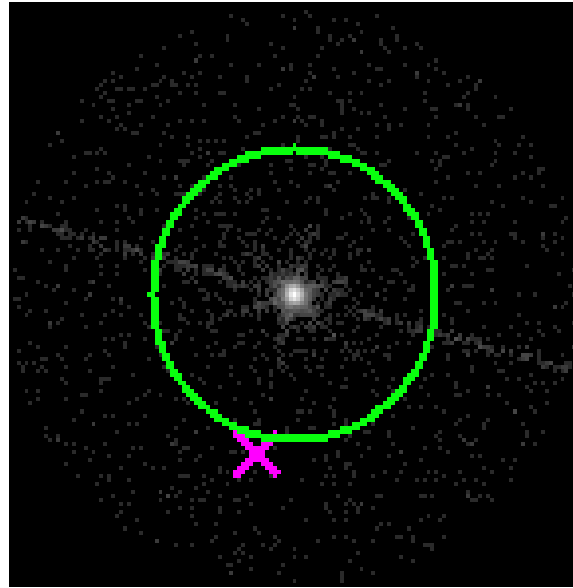


2.5.2 Slot 1

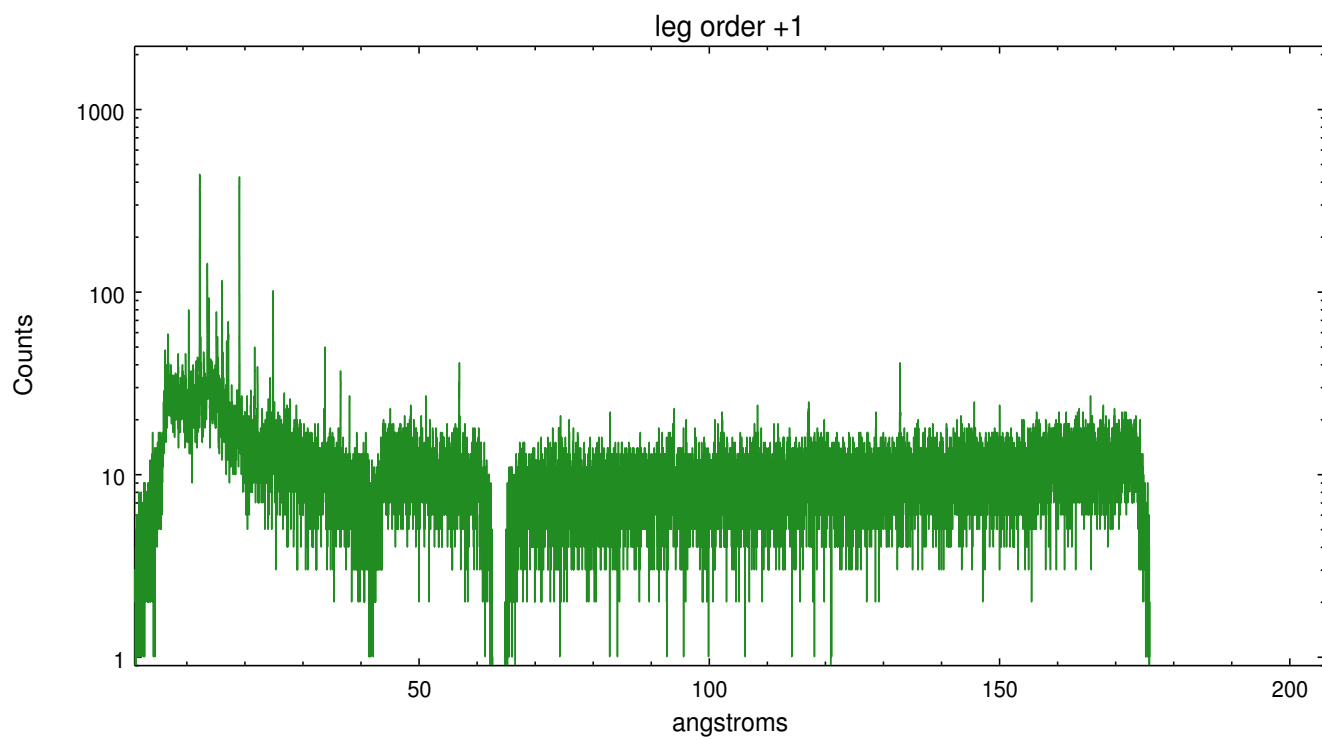
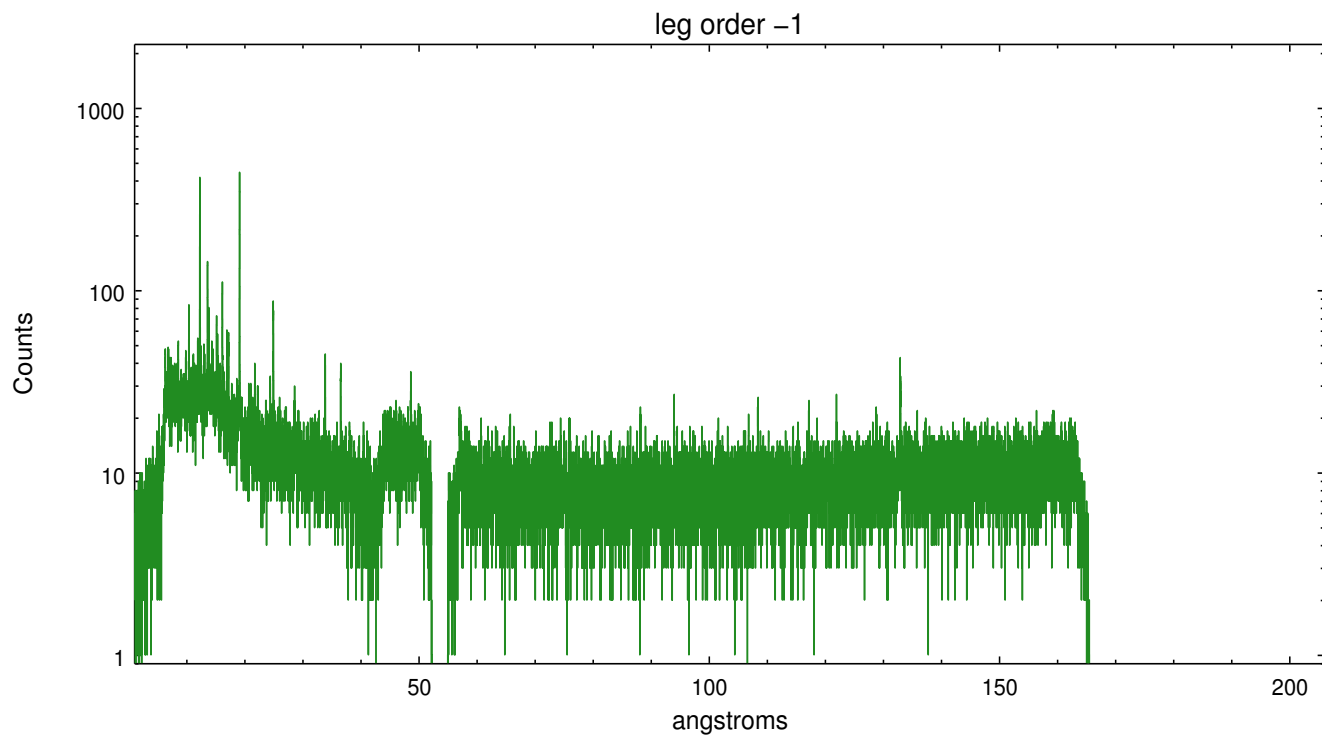


3 Gratings

3.1 LETG Arm



LETG Zero Order



A Summary

A.1 Status

V&V Scientist	Joy Nichols
V&V Date (YYYY-MM-DD)	2013.01.31
V&V Edition	1
V&V Disposition and Status	OK
V&V Charge Time	113.227

A.2 Comments

The fid light in slot 2 was not tracked during most of the observation. The aspect solution is not expected to be degraded by removing one fid light from the solution.===

Charge time for this ObsId remains at previous value of 113.227 ks, although with the current processing the charge time would be 116.9097 ks.