

V&V Reference Report

L2 ASCDS Version : 8.4.5

Observation 60487 - L2 Version 3
Chandra X-Ray Center

L2 Processing Date : Nov 7 2012

Contents

1	Front	2
2	OBI	3
2.1	OBI	3
2.1.1	Images	3
2.1.2	Bias	3
2.1.3	Parameters	4
2.1.4	Events	4
2.2	Compared Parameters	5
2.3	Star Slots	6
2.4	FID Slots	6
A	Summary	7
A.1	Status	7
A.2	Comments	7

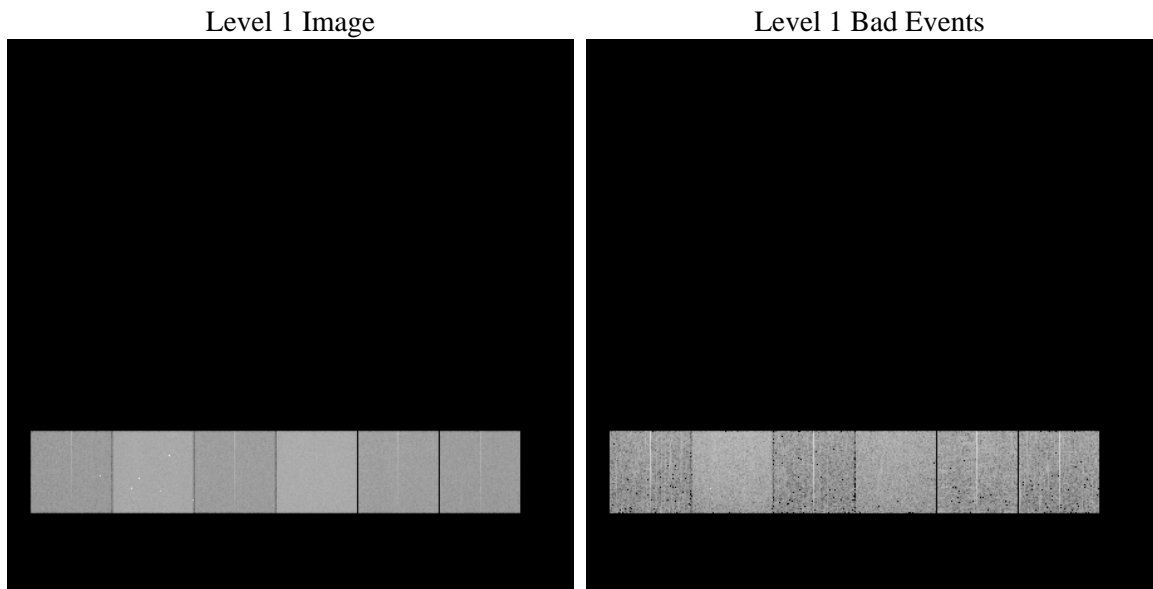
1 Front

seq_num	 	Sequence number
obs_id	60487	Observation id
title	ACIS-456789 diagnostics	Proposal title
observer	CHANDRA engineering request/realtime commanding	Principal investig
object	 	Source name
dtycle	0	
cycle	P	events from which exps? Prim/Second/Both
ra_targ	0.0	Observer's specified target RA [deg]
dec_targ	0.0	Observer's specified target Dec [deg]
ra_nom	0.023844562078235	Nominal RA [deg]
dec_nom	-0.01584339385594	Nominal Dec [deg]
roll_nom	293.49604203003	Nominal Roll [deg]
revision	3	Processing version of data
ontime	8463.5182905793	Sum of GTIs [s]
livetime	8356.3481258651	Livetime [s]
ontime4	4755.7134108841	Sum of GTIs [s]
ontime5	8463.477250576	Sum of GTIs [s]
ontime6	5121.9862455428	Sum of GTIs [s]
ontime7	8463.5182905793	Sum of GTIs [s]
ontime8	5248.30305323	Sum of GTIs [s]
ontime9	4947.0965115726	Sum of GTIs [s]
l2events	1243340	Number of level 2 events

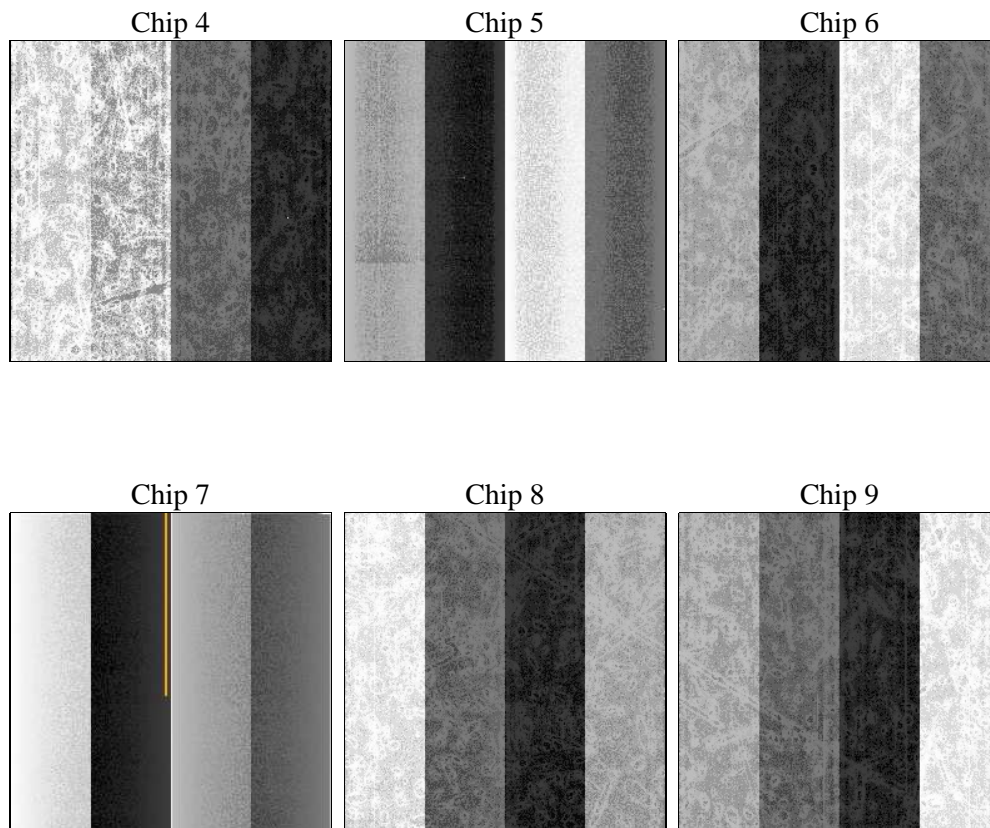
2 OBI

2.1 OBI

2.1.1 Images



2.1.2 Bias



2.1.3 Parameters

obi_num	1	Obi number	sched_exp_time	0.0	[s] Scheduled observation exposure time
ascdsver	8.4.5	Processing system revision	ontime	8463.5182905793	Sum of GTIs [s]
caldbver	4.5.2	 	ontime4	4755.7134108841	Sum of GTIs [s]
date	2012-11-07T23:34:53	Date and time of file creation	ontime5	8463.477250576	Sum of GTIs [s]
revision	3	Processing version of data	ontime6	5121.9862455428	Sum of GTIs [s]
			ontime7	8463.5182905793	Sum of GTIs [s]
			ontime8	5248.30305323	Sum of GTIs [s]
			ontime9	4947.0965115726	Sum of GTIs [s]
			l1events	1535592	Number of level 1 events

2.1.4 Events

	ccd 4	ccd 5	ccd 6	ccd 7	ccd 8	ccd 9		ccd 4	ccd 5	ccd 6	ccd 7	ccd 8	ccd 9
level 1 events	194421	330229	217132	354832	232288	206690	grade 0 events	95098	65520	102025	78075	107527	96450
rejected events	31346	51895	29915	41084	36780	32162		48%	19%	46%	22%	46%	46%
rejected %	16%	15%	13%	11%	15%	15%	grade 1 events	612	419	428	207	483	483
								0%	0%	0%	0%	0%	0%
							grade 2 events	25894	100158	32266	69061	34153	30044
								13%	30%	14%	19%	14%	14%
							grade 3 events	10788	16830	11676	31726	12497	11107
								5%	5%	5%	8%	5%	5%
							grade 4 events	10694	16544	11768	31668	12660	11208
								5%	5%	5%	8%	5%	5%
							grade 5 events	2011	8922	2210	7793	2637	2278
								1%	2%	1%	2%	1%	1%
							grade 6 events	20715	79393	29602	103322	28785	25844
								10%	24%	13%	29%	12%	12%
							grade 7 events	28609	42443	27157	32980	33546	29276
								14%	12%	12%	9%	14%	14%

2.2 Compared Parameters

Parameter	Planned	Actual	Parameter	Planned	Actual
Instrument	ACIS	ACIS	Obspar format version number	7	7
Detector	ACIS-456789	ACIS-456789	Obspar file type	PREDICTED	ACTUAL
Grating	NONE	NONE	Obspar update status	NONE	UPDATED
Data mode	FAINT	FAINT	On-chip summing requested	N	N
Observation mode	SECONDARY	SECONDARY	Subarray requested	NONE	NONE
[deg] Pointing RA	0	0.02384456207823535	Alternating exposures requested	N	N
[deg] Pointing Dec	0	-0.01584339385594005	[s] Primary exposure time	0.000000	3.2
[deg] Pointing Roll	0.0	293.4960420300296			
[mm] SIM focus pos	-0.684267	-1.428180813131781			
[mm] SIM defocus	0	0.1051558262725154			
[mm] SIM translation stage pos	-190.132523	250.466033080201			
[mm] SIM translation stage offset	0	-0.01005468664627074			
[s] Observation start time (MET)	184855794.192245	184855793.16749			
Observation start date	2003-11-10T12:49:54	2003-11-10T12:49:53			
[s] Observation end time (MET)	184877103.943173	184877102.91842			
Observation end date	2003-11-10T18:45:04	2003-11-10T18:45:02			
Read mode	TIMED	TIMED			

2.3 Star Slots

2.4 FID Slots

A Summary

A.1 Status

V&V Scientist	Beth Sundheim
V&V Date (YYYY-MM-DD)	2012.12.07
V&V Edition	1
V&V Disposition and Status	OK
V&V Charge Time	8.4635182905793

A.2 Comments