

V&V Reference Report

L2 ASCDS Version : 8.4.5

Observation 61027 - L2 Version 3
Chandra X-Ray Center

L2 Processing Date : Oct 14 2012

Contents

1	Front	2
2	OBI	3
2.1	OBI	3
2.1.1	Images	3
2.1.2	Bias	3
2.1.3	Parameters	4
2.1.4	Events	4
2.2	Compared Parameters	5
2.3	Star Slots	6
2.4	FID Slots	6
A	Summary	7
A.1	Status	7
A.2	Comments	7

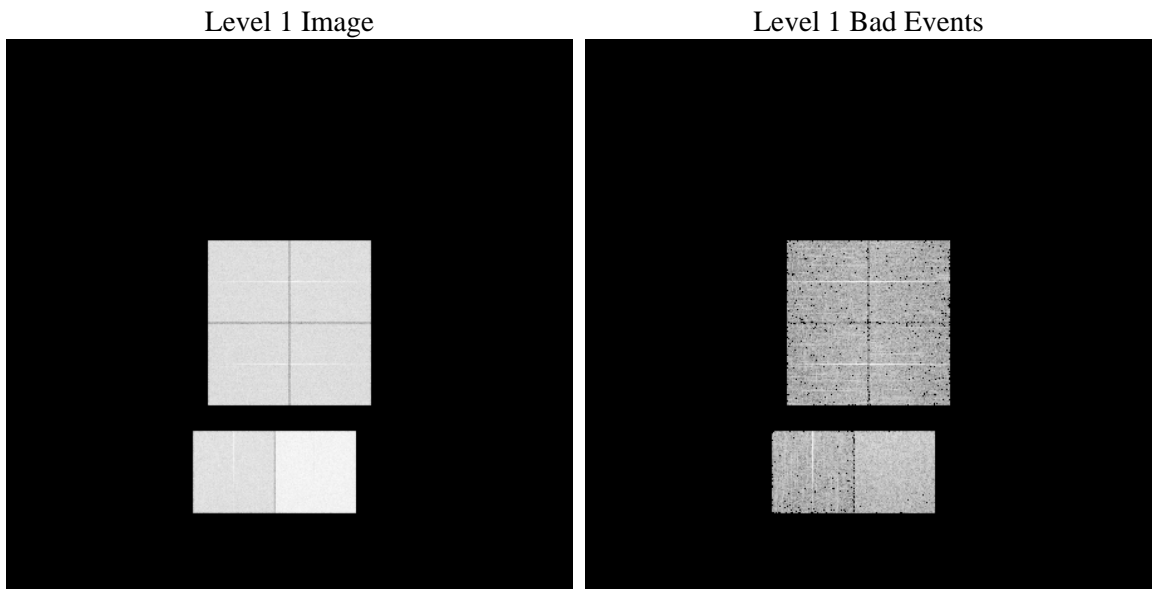
1 Front

seq_num	 	Sequence number
obs_id	61027	Observation id
title	ACIS-012367 diagnostics	Proposal title
observer	CHANDRA engineering request/realtime commanding	Principal investig
object	 	Source name
dtycle	0	
cycle	P	events from which exps? Prim/Second/Both
ra_targ	0.0	Observer's specified target RA [deg]
dec_targ	0.0	Observer's specified target Dec [deg]
ra_nom	348.09999560776	Nominal RA [deg]
dec_nom	5.47138917808	Nominal Dec [deg]
roll_nom	237.16711664181	Nominal Roll [deg]
revision	3	Processing version of data
ontime	7797.2041674256	Sum of GTIs [s]
livetime	7698.471273345	Livetime [s]
ontime0	3788.7655497491	Sum of GTIs [s]
ontime1	3849.6137175858	Sum of GTIs [s]
ontime2	3612.9795578122	Sum of GTIs [s]
ontime3	3642.3116629124	Sum of GTIs [s]
ontime6	4005.100143224	Sum of GTIs [s]
ontime7	7797.2041674256	Sum of GTIs [s]
l2events	1212334	Number of level 2 events

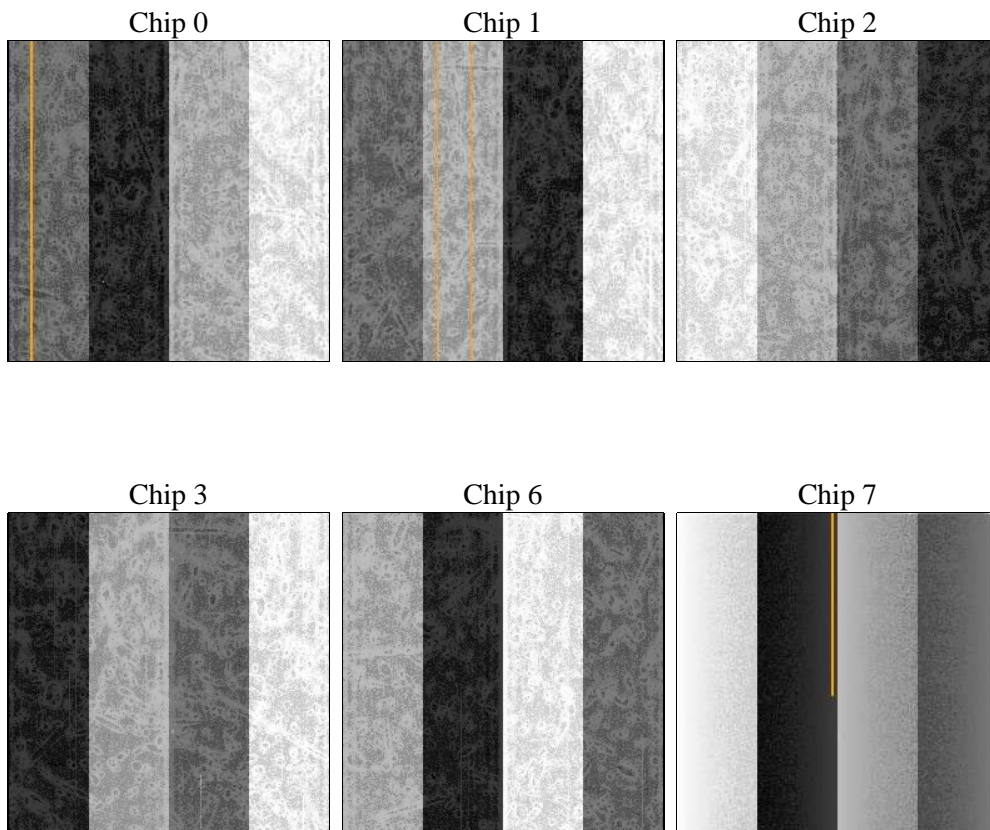
2 OBI

2.1 OBI

2.1.1 Images



2.1.2 Bias



2.1.3 Parameters

obi_num	0	Obi number	sched_exp_time	0.0	[s] Scheduled observation exposure time
ascdsver	8.4.5	Processing system revision	ontime	7797.2041674256	Sum of GTIs [s]
caldbver	4.5.2	 	ontime0	3788.7655497491	Sum of GTIs [s]
date	2012-10-14T23:56:49	Date and time of file creation	ontime1	3849.6137175858	Sum of GTIs [s]
revision	3	Processing version of data	ontime2	3612.9795578122	Sum of GTIs [s]
			ontime3	3642.3116629124	Sum of GTIs [s]
			ontime6	4005.100143224	Sum of GTIs [s]
			ontime7	7797.2041674256	Sum of GTIs [s]
			l1events	1434020	Number of level 1 events

2.1.4 Events

	ccd 0	ccd 1	ccd 2	ccd 3	ccd 6	ccd 7		ccd 0	ccd 1	ccd 2	ccd 3	ccd 6	ccd 7
level 1 events	199207	203164	194419	196217	221565	419448	grade 0 events	96947	98720	94716	96093	105913	95935
rejected events	24128	24564	25629	25729	27296	40936		48%	48%	48%	48%	47%	22%
rejected %	12%	12%	13%	13%	12%	9%	grade 1 events	508	479	549	538	509	243
								0%	0%	0%	0%	0%	0%
							grade 2 events	30225	31625	28832	29029	33353	84140
								15%	15%	14%	14%	15%	20%
							grade 3 events	11225	11167	11057	11020	11986	38268
								5%	5%	5%	5%	5%	9%
							grade 4 events	11451	11370	10948	11096	12174	38033
								5%	5%	5%	5%	5%	9%
							grade 5 events	1769	1861	1671	1748	1950	8124
								0%	0%	0%	0%	0%	1%
							grade 6 events	25231	25718	23237	23250	30843	122136
								12%	12%	11%	11%	13%	29%
							grade 7 events	21851	22224	23409	23443	24837	32569
								10%	10%	12%	11%	11%	7%

2.2 Compared Parameters

Parameter	Planned	Actual	Parameter	Planned	Actual
Instrument	ACIS	ACIS	Obspar format version number	7	7
Detector	ACIS-012367	ACIS-012367	Obspar file type	PREDICTED	ACTUAL
Grating	NONE	NONE	Obspar update status	NONE	UPDATED
Data mode	FAINT	FAINT	On-chip summing requested	N	N
Observation mode	SECONDARY	SECONDARY	Subarray requested	NONE	NONE
[deg] Pointing RA	0	348.0999956077594	Alternating exposures requested	N	N
[deg] Pointing Dec	0	5.471389178079994	[s] Primary exposure time	0.000000	3.2
[deg] Pointing Roll	0.0	237.1671166418138			
[mm] SIM focus pos	-0.782348	-0.7809083437167272			
[mm] SIM defocus	0	0.7524282956875696			
[mm] SIM translation stage pos	-233.592463	250.466033080201			
[mm] SIM translation stage offset	0	-0.01005468664627074			
[s] Observation start time (MET)	148946756.525153	148946755.50045			
Observation start date	2002-09-20T22:05:57	2002-09-20T22:05:55			
[s] Observation end time (MET)	148984507.276713	148984506.25202			
Observation end date	2002-09-21T08:35:07	2002-09-21T08:35:06			
Read mode	TIMED	TIMED			

2.3 Star Slots

2.4 FID Slots

A Summary

A.1 Status

V&V Scientist	Beth Sundheim
V&V Date (YYYY-MM-DD)	2012.10.24
V&V Edition	1
V&V Disposition and Status	OK
V&V Charge Time	7.7972041674256

A.2 Comments