

V&V Reference Report

L2 ASCDS Version : 8.4.3

Observation 6107 - L2 Version 2
Chandra X-Ray Center

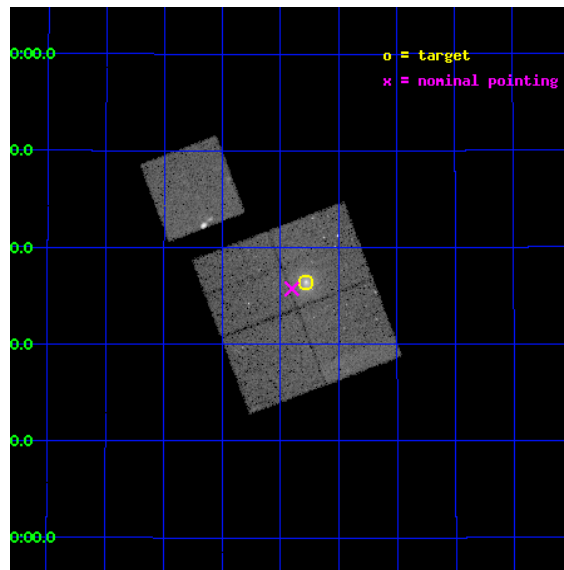
L2 Processing Date : Mar 17 2012

Contents

1	Front	2
2	OBI	3
2.1	OBI	3
2.1.1	Images	3
2.1.2	Bias	3
2.1.3	Parameters	4
2.1.4	Events	4
2.2	Compared Parameters	5
2.3	Aspect	6
2.4	Star Slots	9
2.4.1	Slot 3	9
2.4.2	Slot 4	10
2.4.3	Slot 5	11
2.4.4	Slot 6	12
2.4.5	Slot 7	13
2.5	FID Slots	14
2.5.1	Slot 0	14
2.5.2	Slot 1	15
2.5.3	Slot 2	16
A	Summary	17
A.1	Status	17
A.2	Comments	17

1 Front

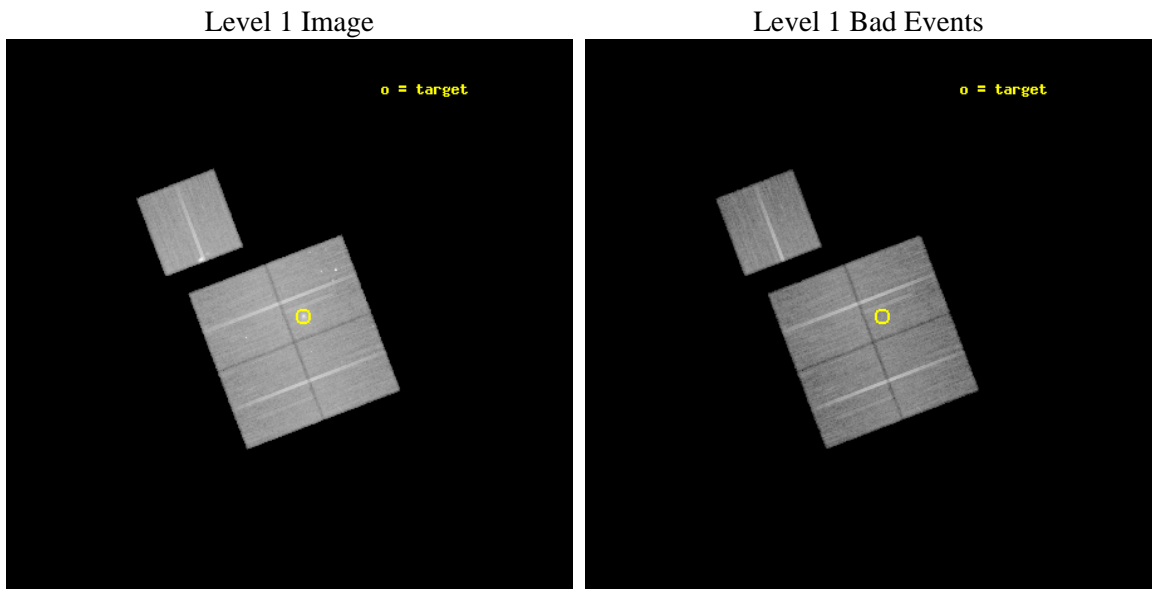
seq_num	800555	Sequence number
obs_id	6107	Observation id
title	Probing dark energy using the X-ray gas mass fraction in dynamically relaxed galaxy clusters	Proposal title
observer	Dr Steven Allen	Principal investigator
object	MACS1720.3+3536	Source name
dtcycle	0	
cycle	P	events from which exps? Prim/Second/Both
ra_targ	260.069583	Observer's specified target RA [deg]
dec_targ	35.607222	Observer's specified target Dec [deg]
ra_nom	260.10049089833	Nominal RA [deg]
dec_nom	35.595651430655	Nominal Dec [deg]
roll_nom	339.19070338656	Nominal Roll [deg]
revision	2	Processing version of data
ontime	34332.41800344	Sum of GTIs [s]
livetime	33883.839687067	Livetime [s]
ontime0	34329.277023137	Sum of GTIs [s]
ontime1	34332.417973489	Sum of GTIs [s]
ontime2	34338.699933946	Sum of GTIs [s]
ontime3	34332.41800344	Sum of GTIs [s]
ontime6	34338.699933946	Sum of GTIs [s]
l2events	123860	Number of level 2 events



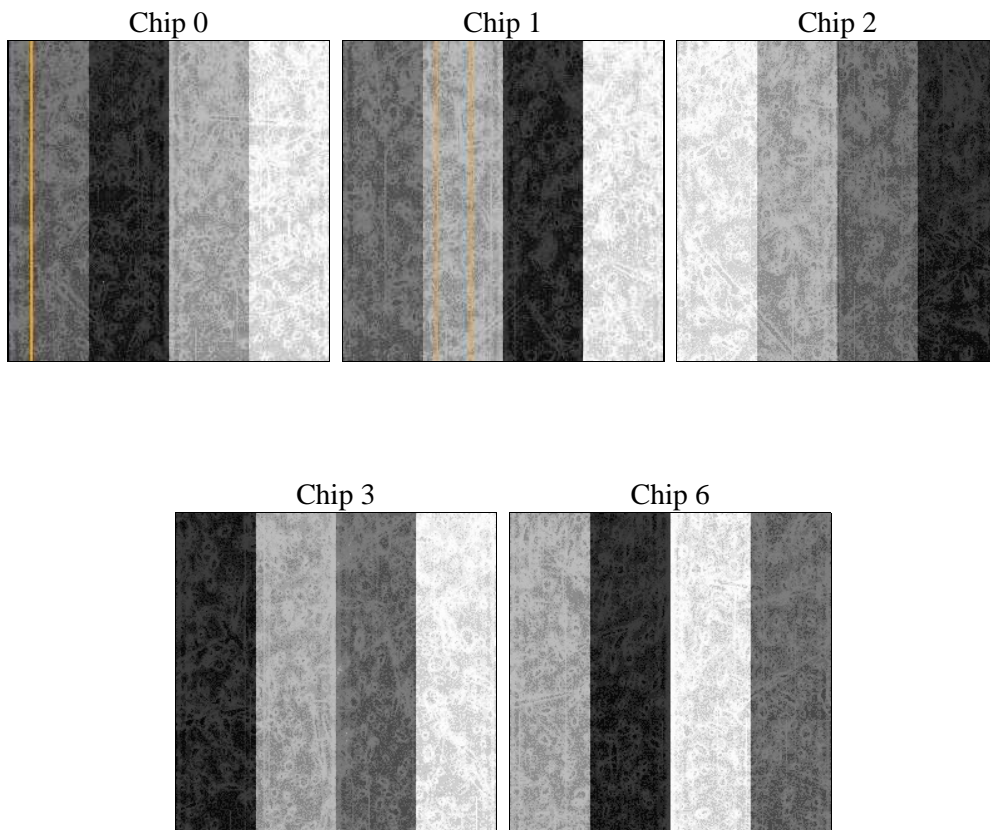
2 OBI

2.1 OBI

2.1.1 Images



2.1.2 Bias



2.1.3 Parameters

obi_num	2	Obi number	sched_exp_time	34200.000000	[s] Scheduled observation exposure time
ascdsver	8.4.3	Processing system revision	ontime	34332.41800344	Sum of GTIs [s]
caldsver	4.4.8	 	ontime0	34329.277023137	Sum of GTIs [s]
date	2012-03-17T16:06:34	Date and time of file creation	ontime1	34332.417973489	Sum of GTIs [s]
revision	2	Processing version of data	ontime2	34338.699933946	Sum of GTIs [s]
			ontime3	34332.41800344	Sum of GTIs [s]
			ontime6	34338.699933946	Sum of GTIs [s]
			l1events	1191767	Number of level 1 events

2.1.4 Events

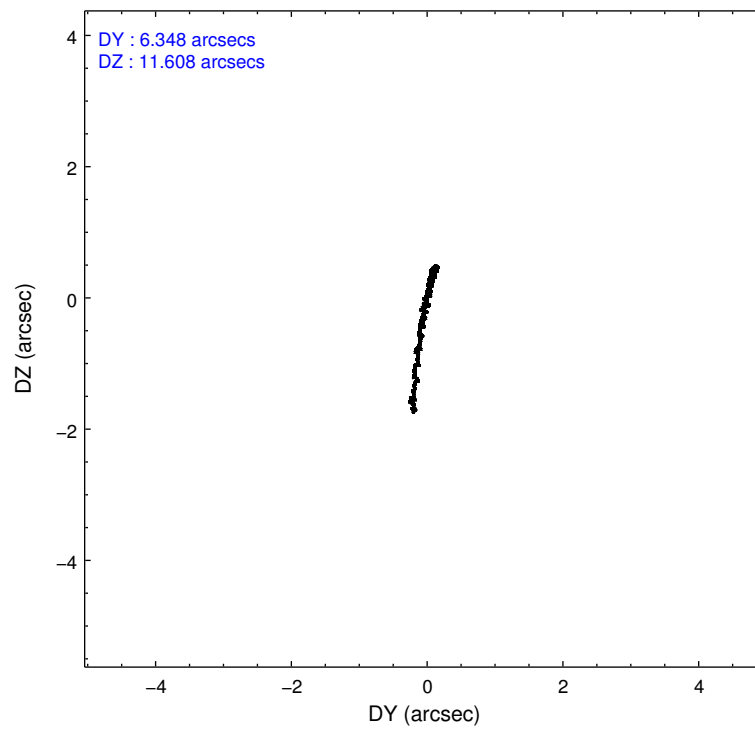
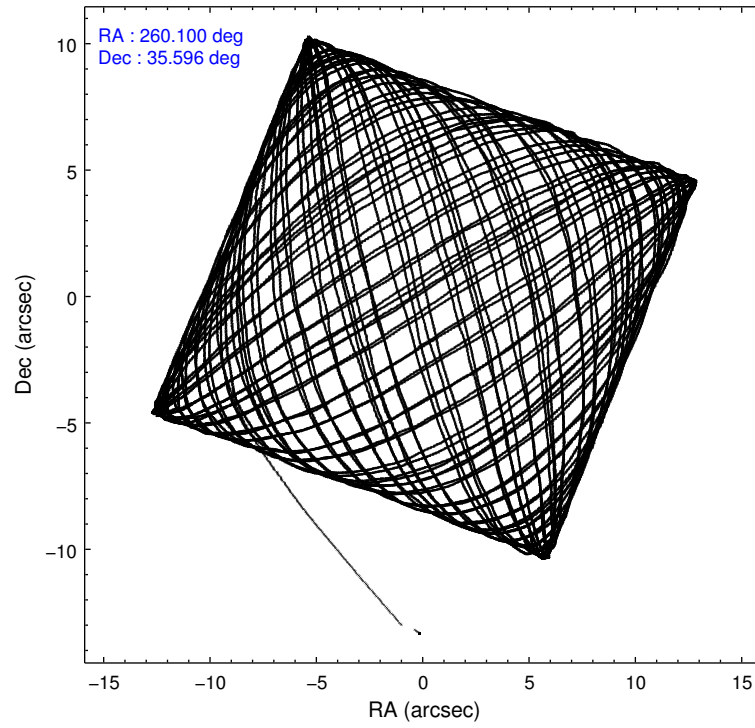
	ccd 0	ccd 1	ccd 2	ccd 3	ccd 6
level 1 events	221260	223359	253876	254211	239061
rejected events	197675	195821	229679	216651	207293
rejected %	89%	87%	90%	85%	86%

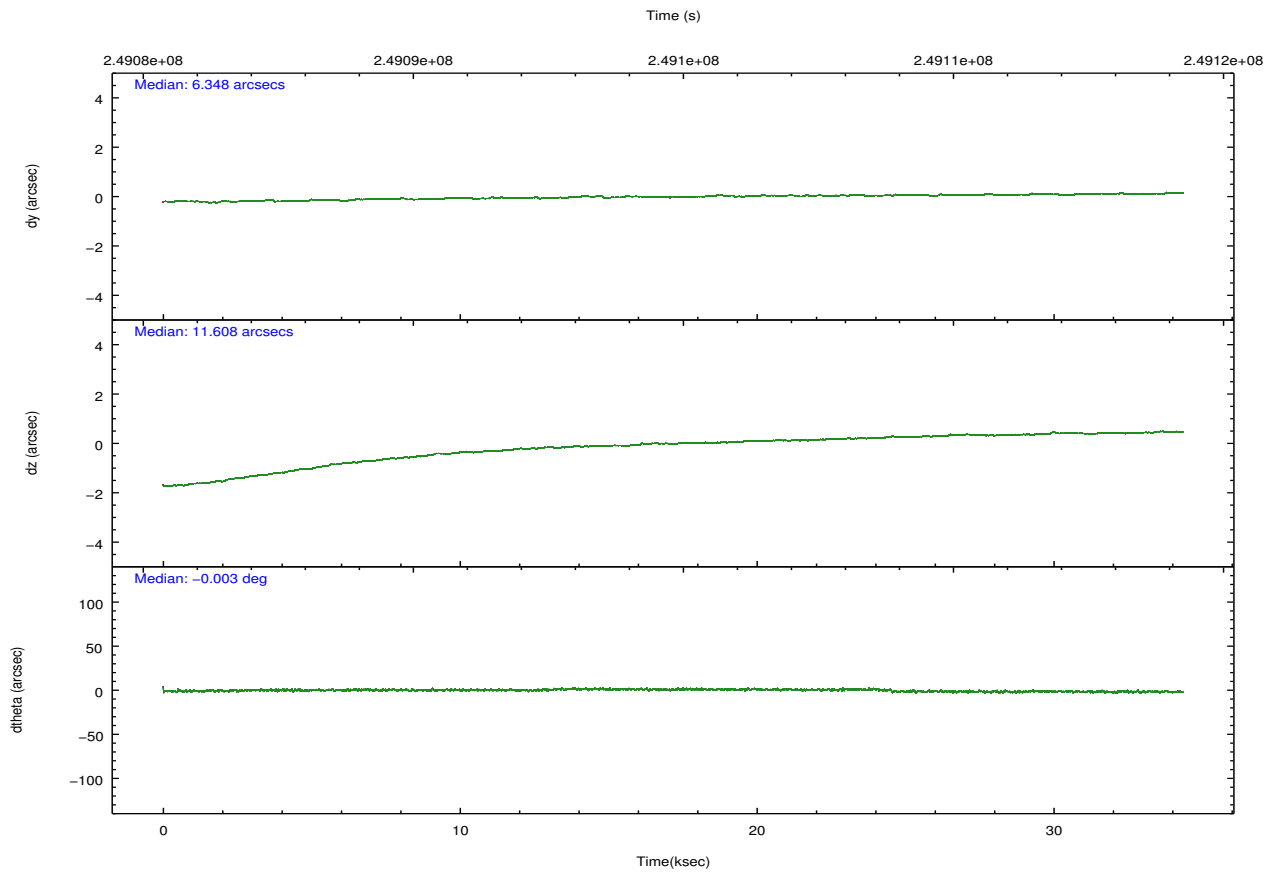
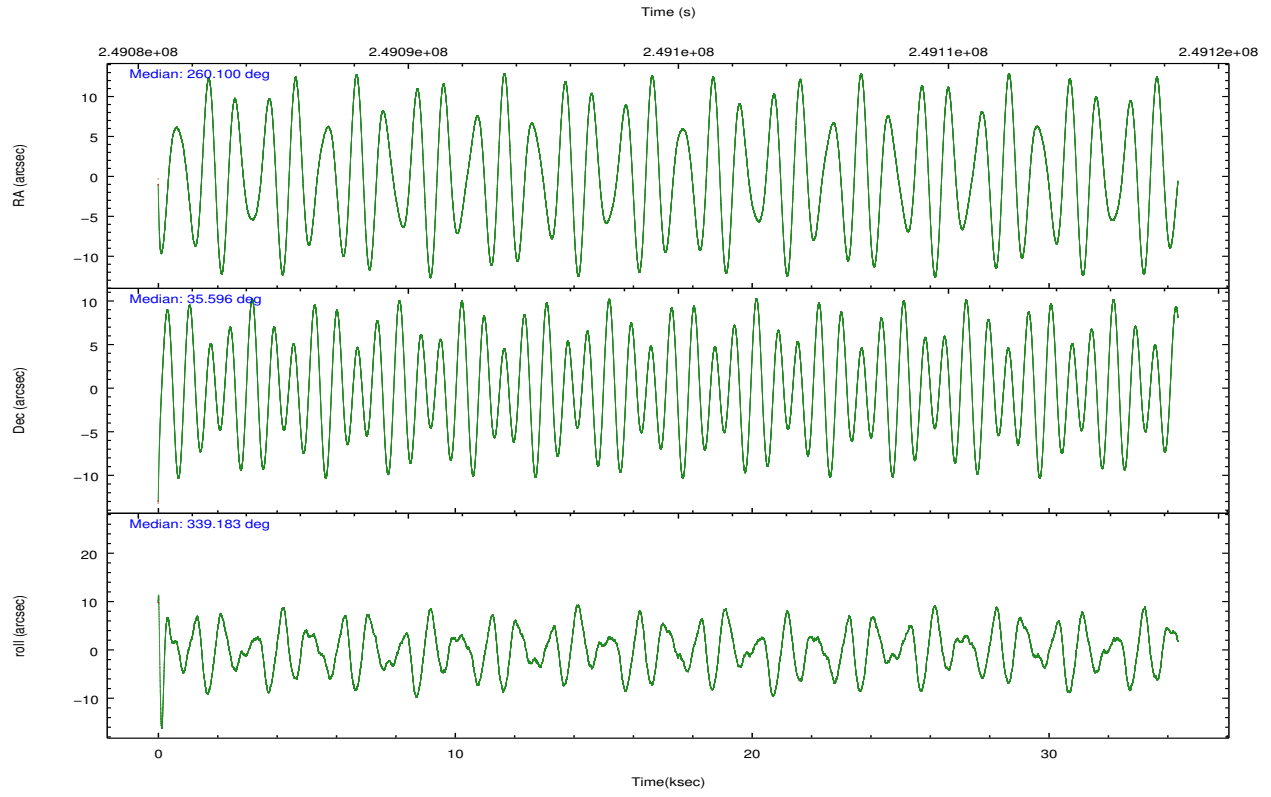
	ccd 0	ccd 1	ccd 2	ccd 3	ccd 6
grade 0 events	8904	10852	9453	21014	15217
	4%	4%	3%	8%	6%
grade 1 events	106	133	138	198	139
	0%	0%	0%	0%	0%
grade 2 events	5481	5987	5567	6254	5970
	2%	2%	2%	2%	2%
grade 3 events	2741	2931	2573	2932	2879
	1%	1%	1%	1%	1%
grade 4 events	2476	2935	2620	3024	2720
	1%	1%	1%	1%	1%
grade 5 events	7938	8991	7570	9523	9349
	3%	4%	2%	3%	3%
grade 6 events	4302	5236	4359	4752	5362
	1%	2%	1%	1%	2%
grade 7 events	189312	186294	221596	206514	197425
	85%	83%	87%	81%	82%

2.2 Compared Parameters

Parameter	Planned	Actual	Parameter	Planned	Actual
Instrument	ACIS	ACIS	Obspar format version number	7	7
Detector	ACIS-01236	ACIS-01236	Obspar file type	PREDICTED	ACTUAL
Grating	NONE	NONE	Obspar update status	NONE	UPDATED
Data mode	VFAINT	VFAINT	Number of optional ACIS chips dropped	0	0
Observation mode	POINTING	POINTING	On-chip summing requested	N	N
[deg] Pointing RA	260.067269	260.1004908983336	Subarray requested	NONE	NONE
[deg] Pointing Dec	35.591168	35.59565143065495	Alternating exposures requested	N	N
[deg] Pointing Roll	339.001347	339.1907033865591	[s] Primary exposure time	0.000000	3.1
[mm] SIM focus pos	-0.782348	-0.7809083437167272			
[mm] SIM defocus	0	0.001439871863259334			
[mm] SIM translation stage pos	-229.442463	-229.4438428438578			
[mm] SIM translation stage offset	-4.15	-4.148610159071865			
[s] Observation start time (MET)	249082588.184000	249081384.30963			
Observation start date	2005-11-22T21:35:24	2005-11-22T21:16:24			
[s] Observation end time (MET)	249116788.184000	249117771.81131			
Observation end date	2005-11-23T07:05:24	2005-11-23T07:22:51			
Read mode	TIMED	TIMED			

2.3 Aspect



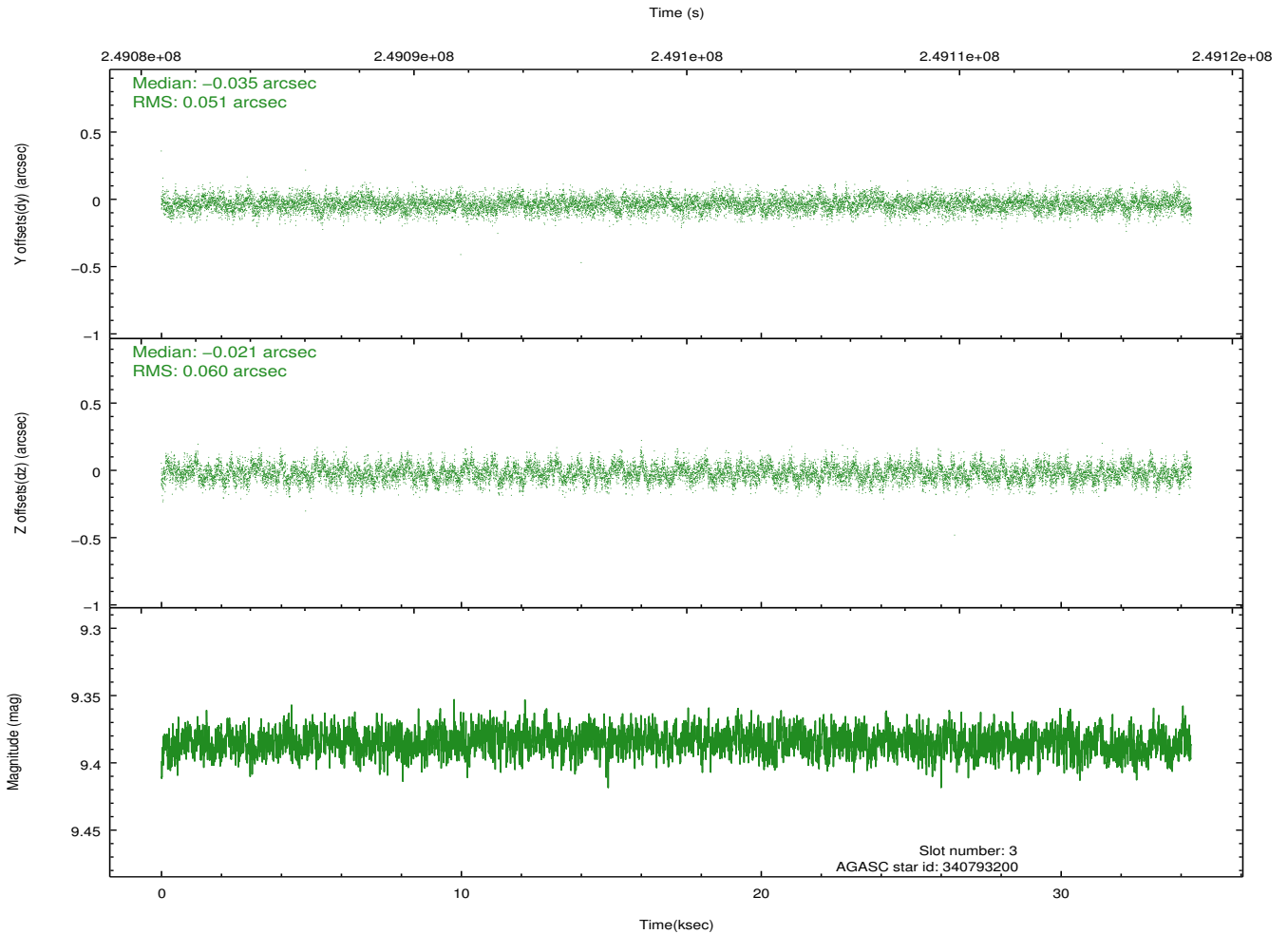
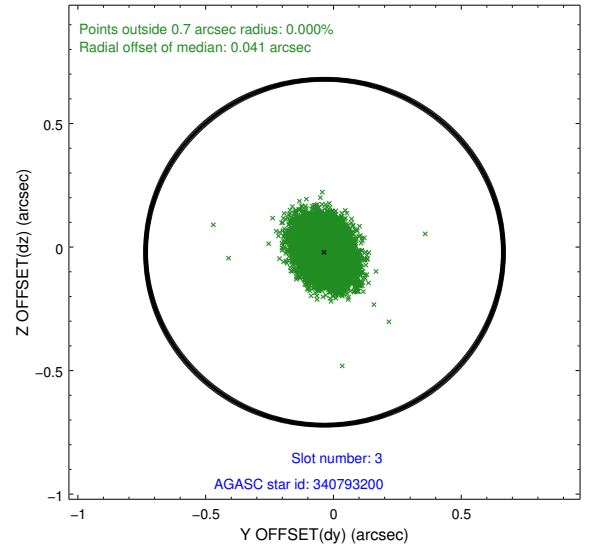
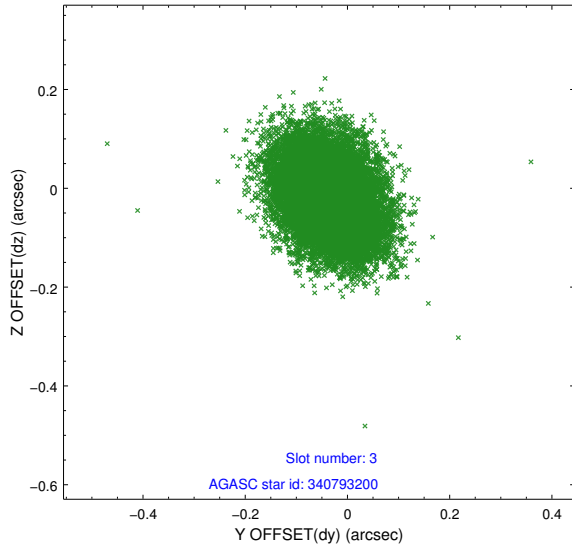


Slot Statistics

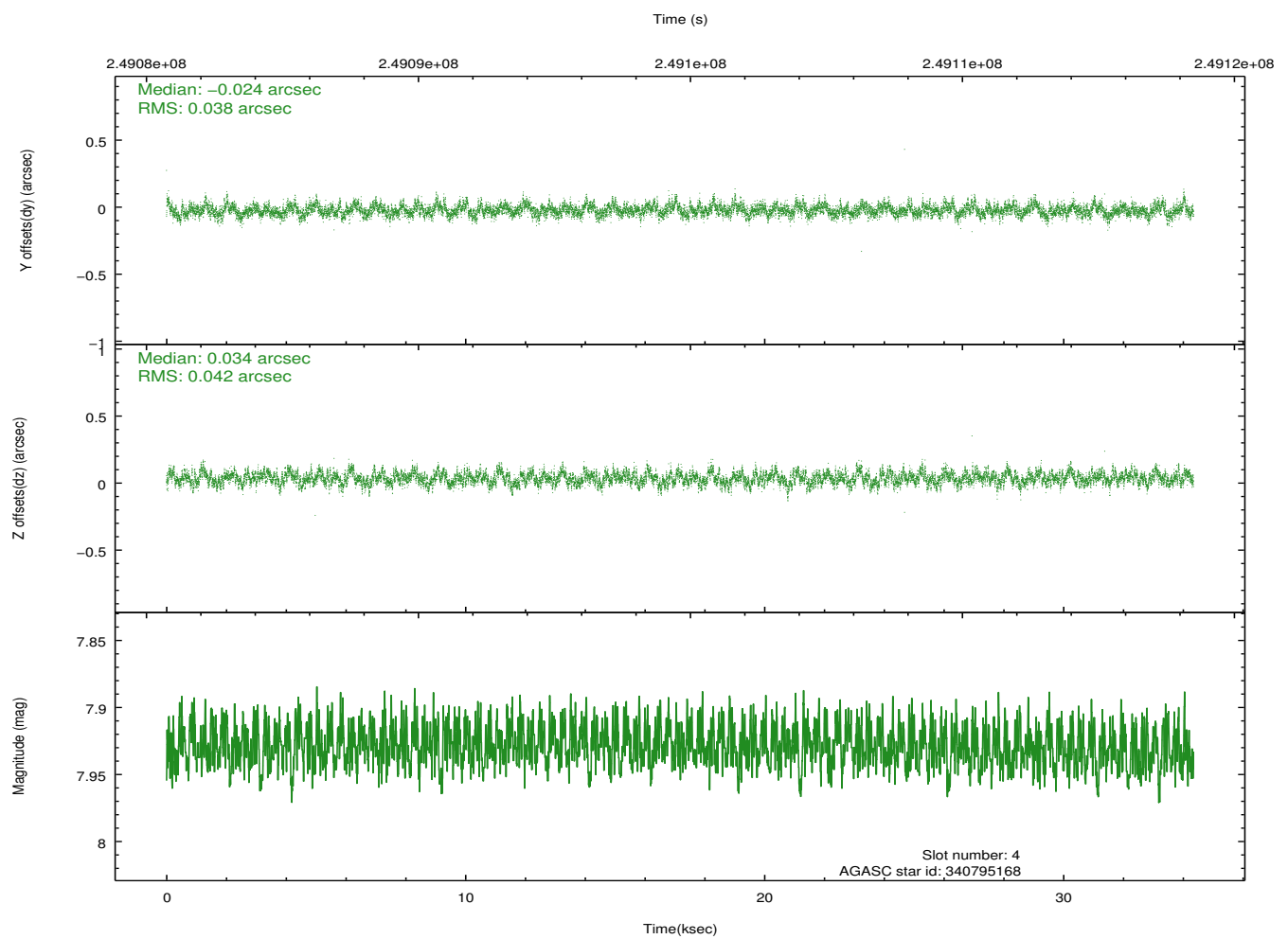
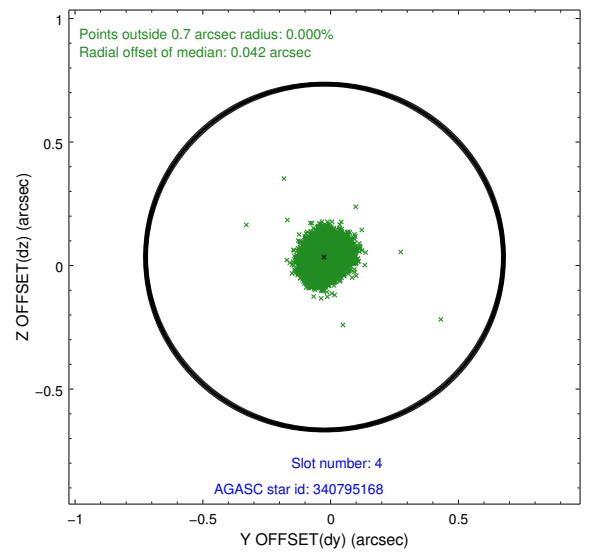
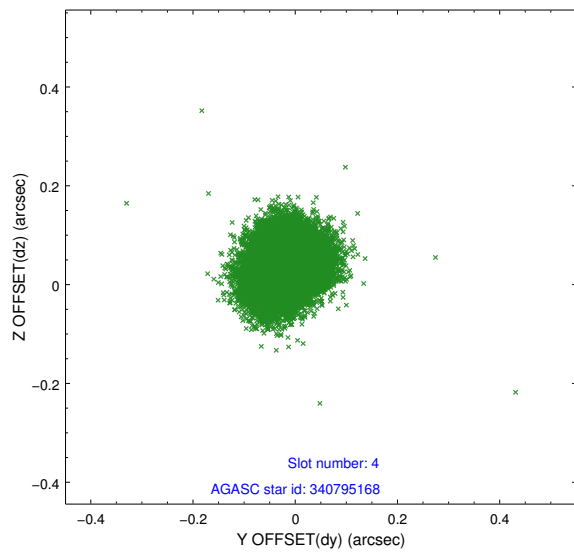
slot	status	id	mag	n_pts	med_dy	med_dz	dr1	dr2	ra	dec	mean_y	mean_z
0	FID	ACIS-I-2	7.16	8375	-0.077	-0.116	0.032	0.052	0.000000	0.000000	-761.16	-925.97
1	FID	ACIS-I-4	7.15	8378	0.110	0.077	0.010	0.014	0.000000	0.000000	2153.02	980.38
2	FID	ACIS-I-5	7.22	8378	-0.135	0.108	0.027	0.045	0.000000	0.000000	-1814.80	977.71
3	GUIDE	340793200	9.38	16741	-0.035	-0.021	0.083	0.138	260.300981	35.203623	1141.92	-1054.99
4	GUIDE	340795168	7.93	16753	-0.024	0.034	0.060	0.097	260.116328	35.370994	419.07	-688.21
5	GUIDE	341325128	8.48	16747	0.028	-0.036	0.067	0.110	260.031346	35.684277	-217.68	275.46
6	GUIDE	341321368	9.25	16743	0.049	-0.029	0.093	0.152	260.000972	35.687029	-304.15	252.97
7	GUIDE	341325224	8.86	16716	-0.022	0.052	0.078	0.124	260.448683	35.800602	769.18	1105.13

2.4 Star Slots

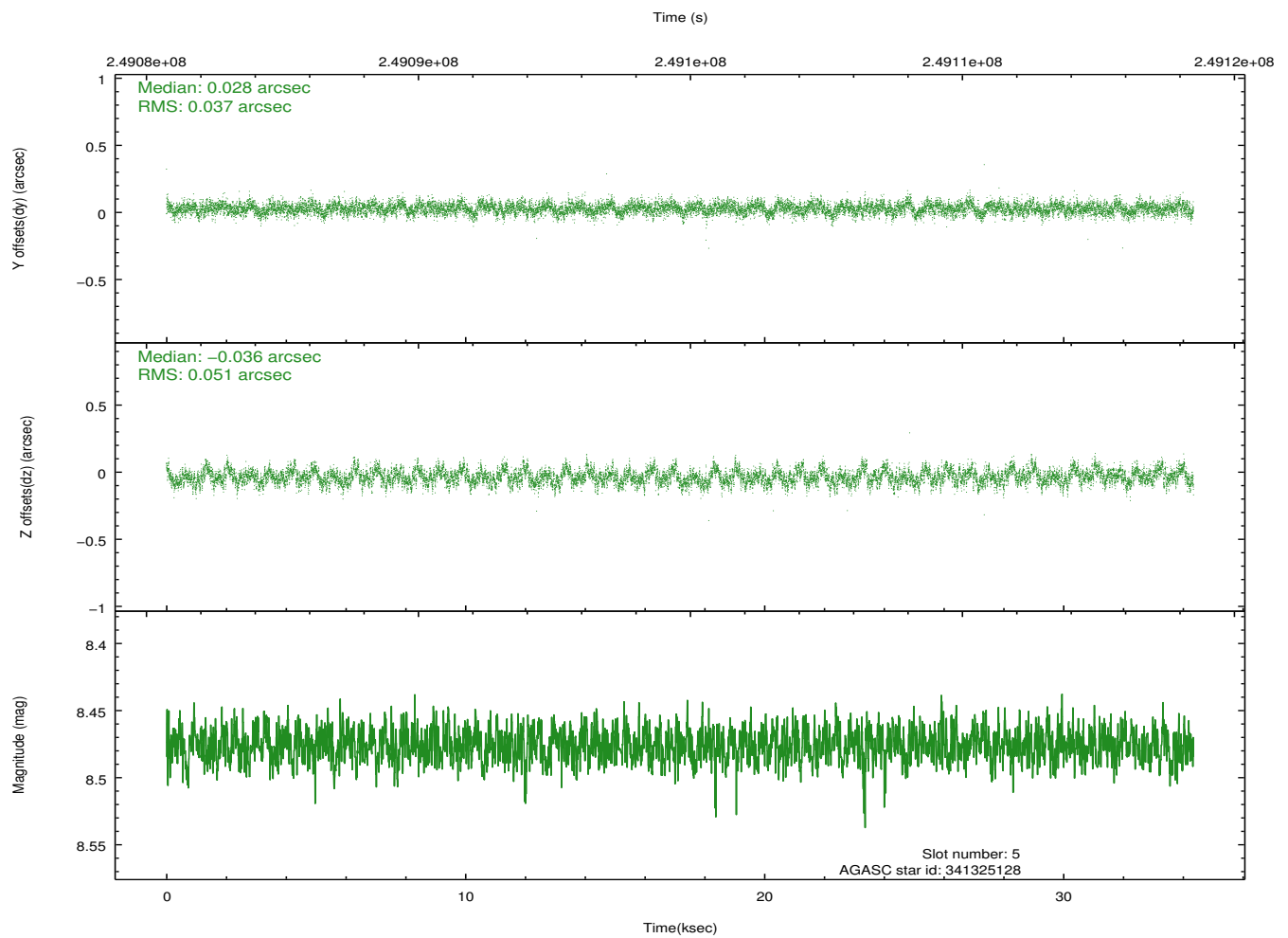
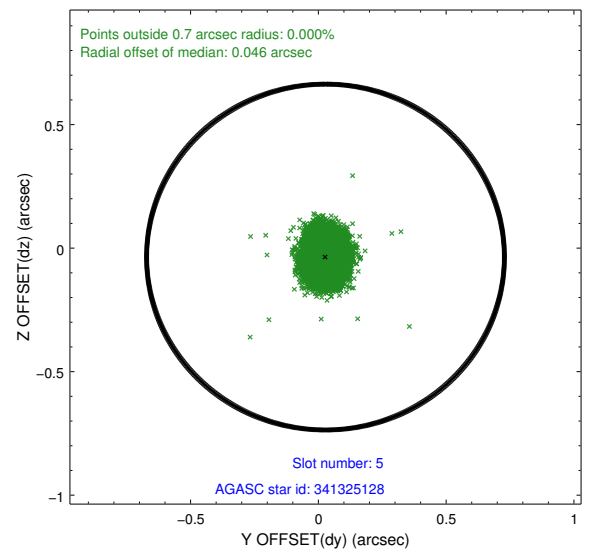
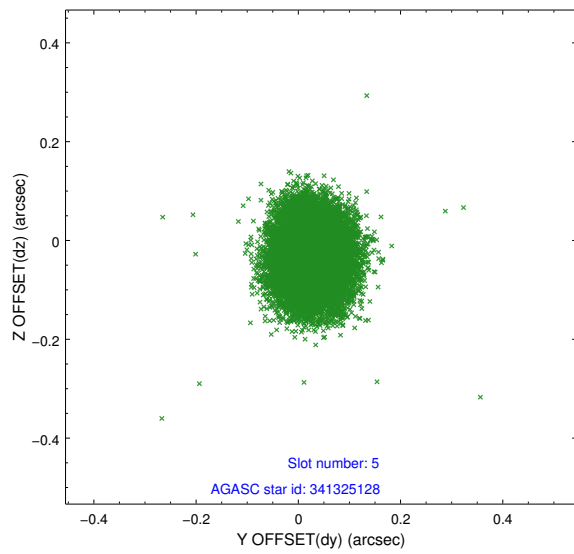
2.4.1 Slot 3



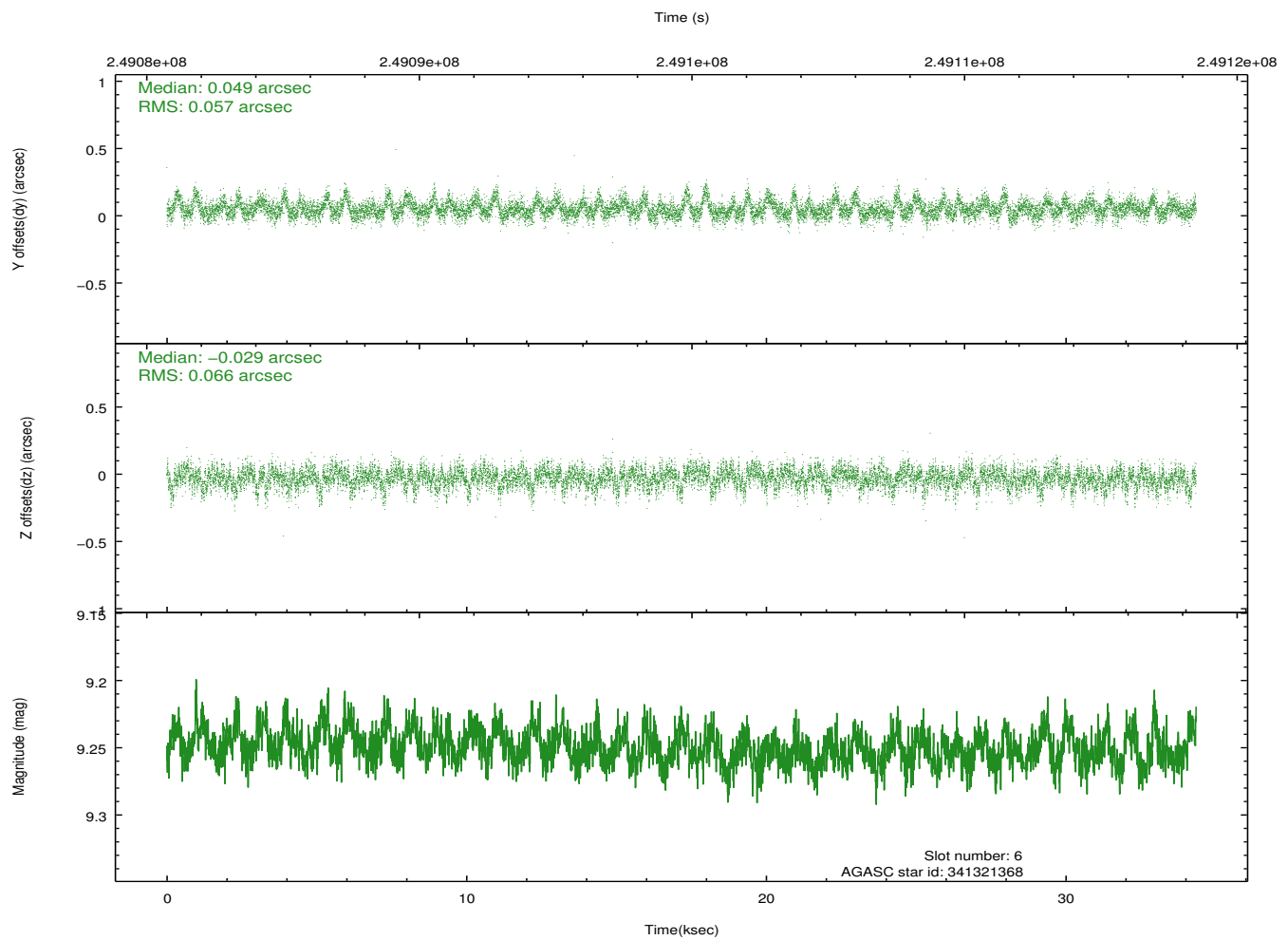
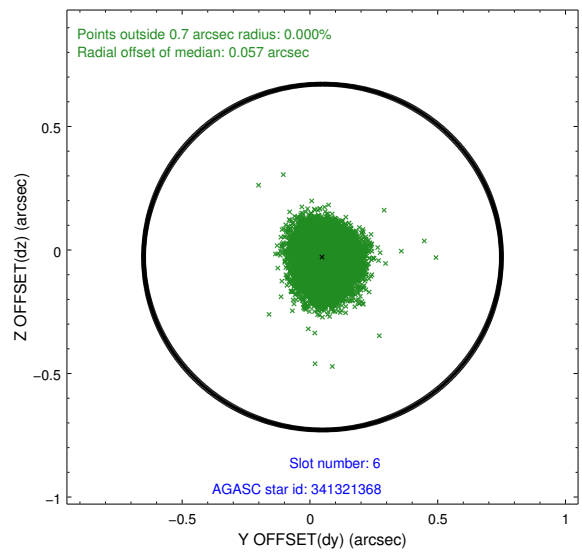
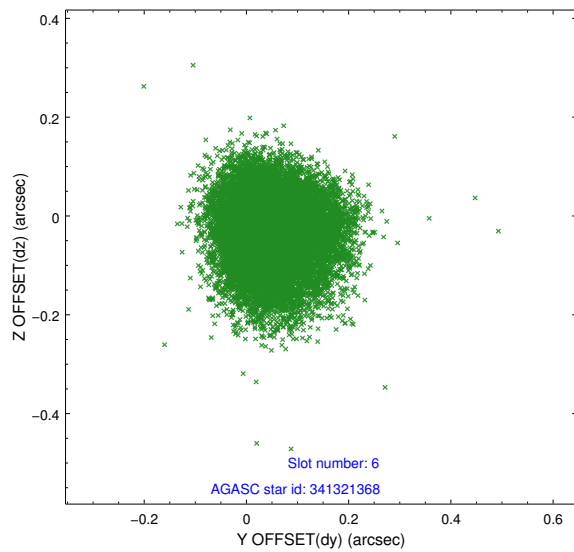
2.4.2 Slot 4



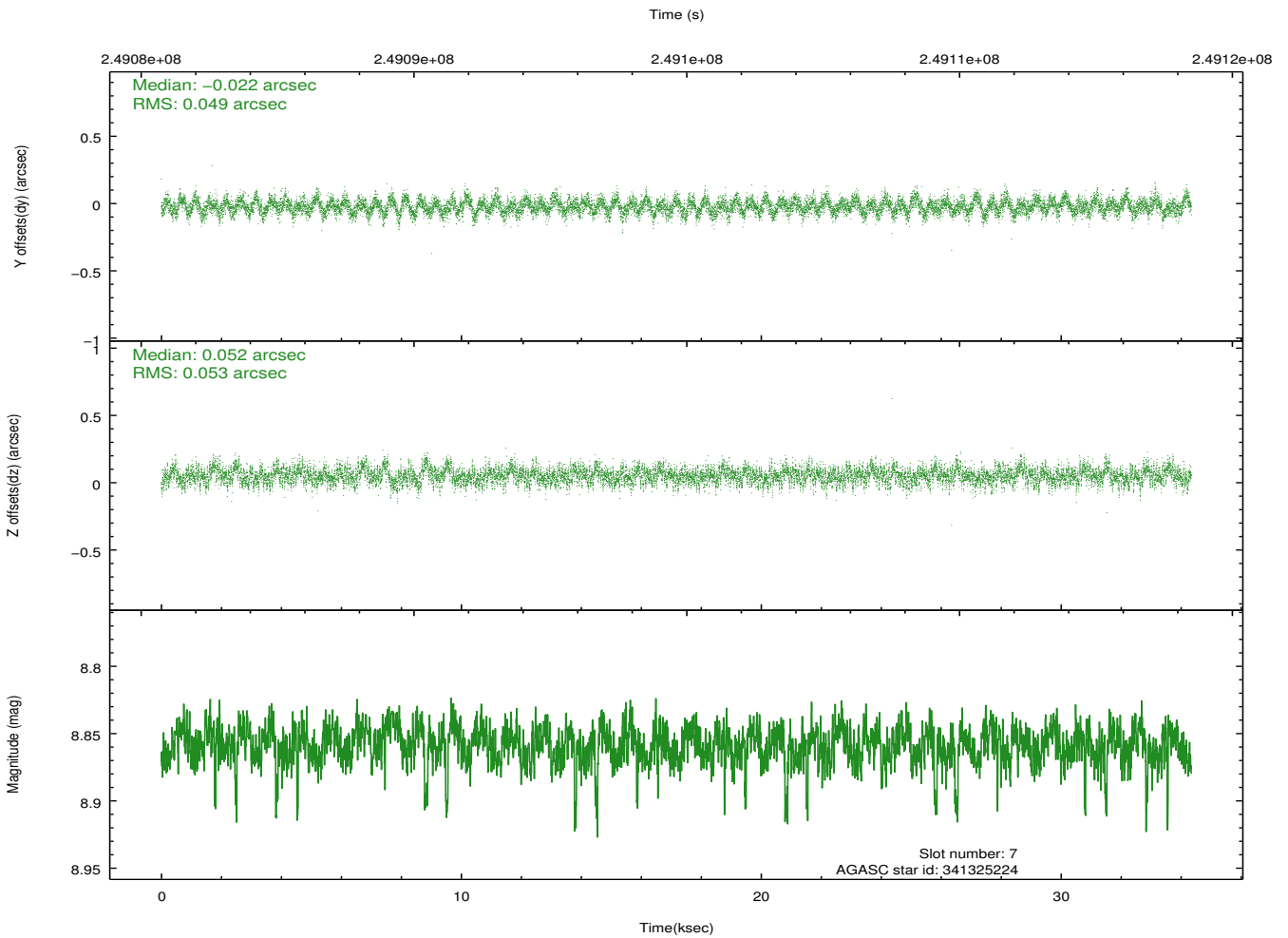
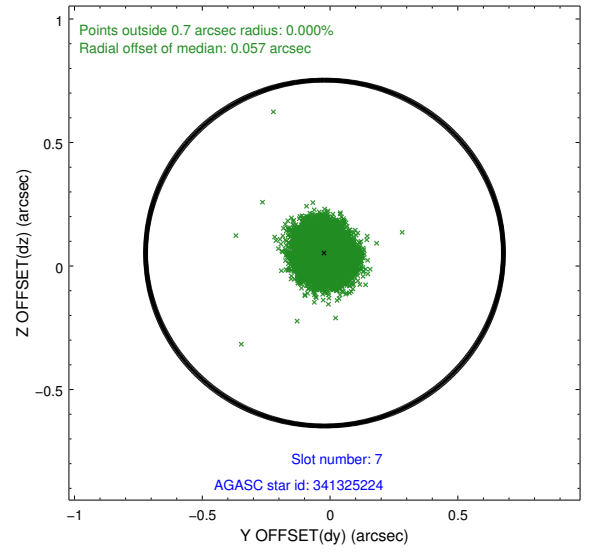
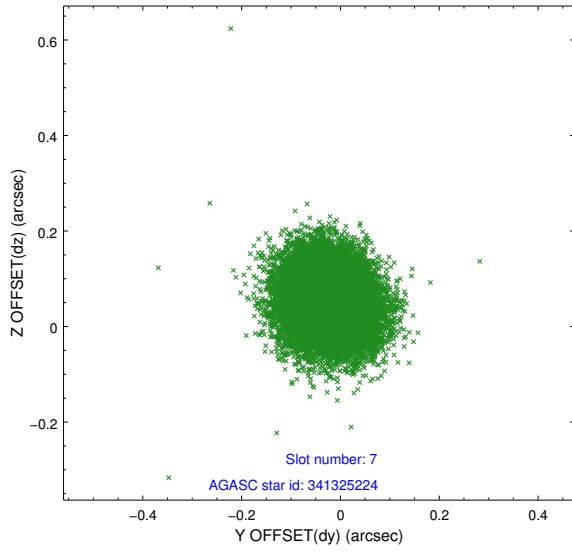
2.4.3 Slot 5



2.4.4 Slot 6

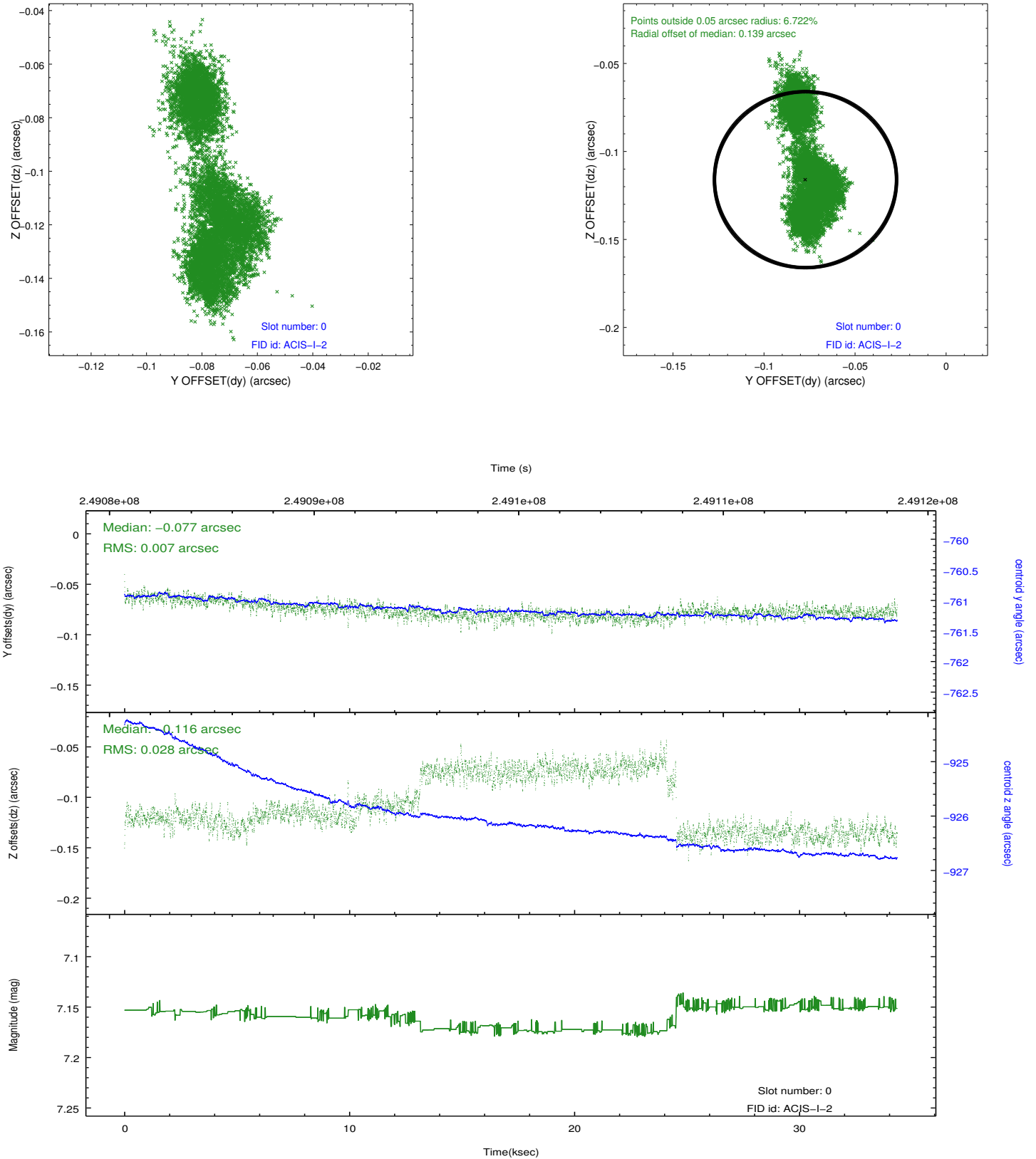


2.4.5 Slot 7

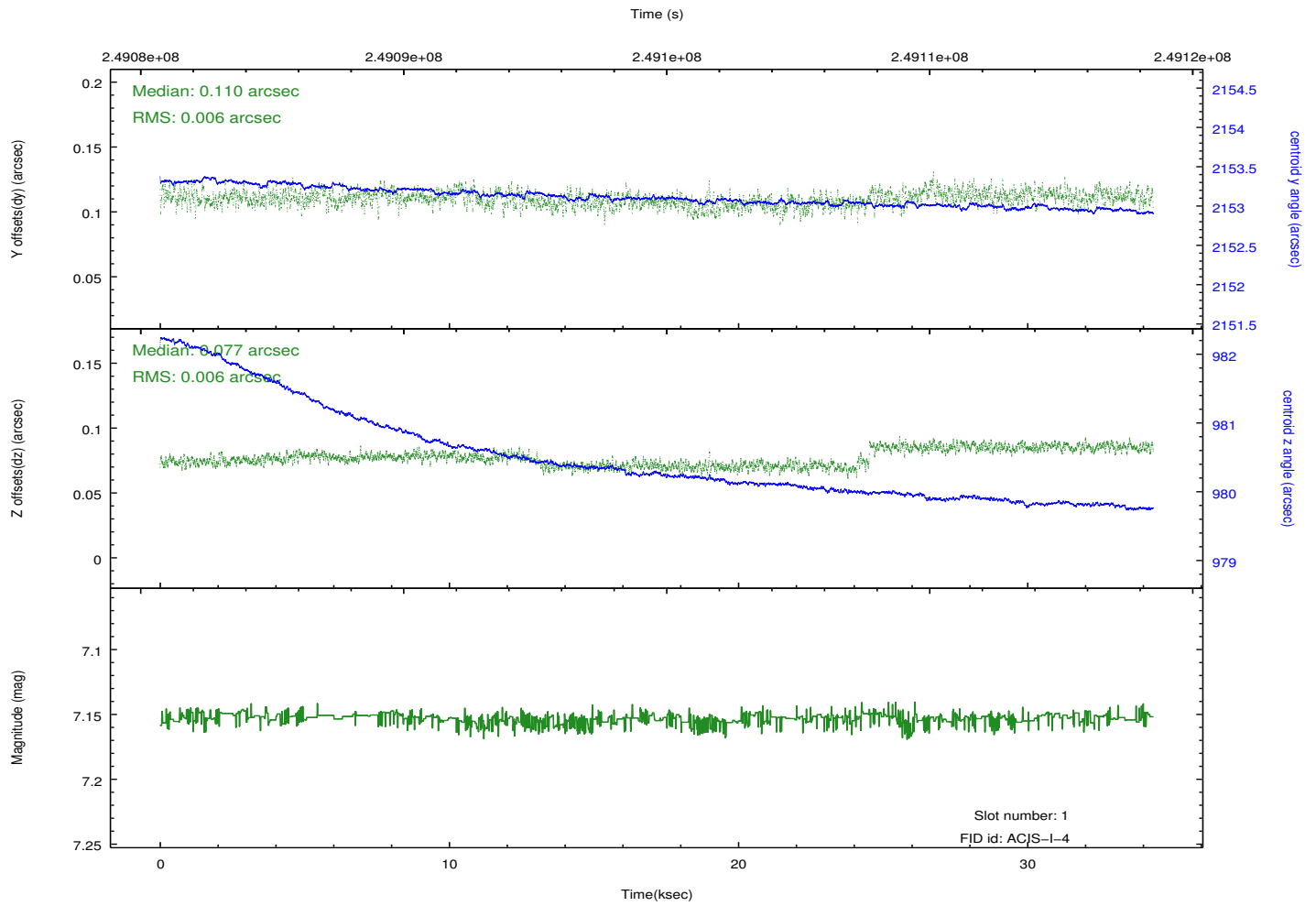
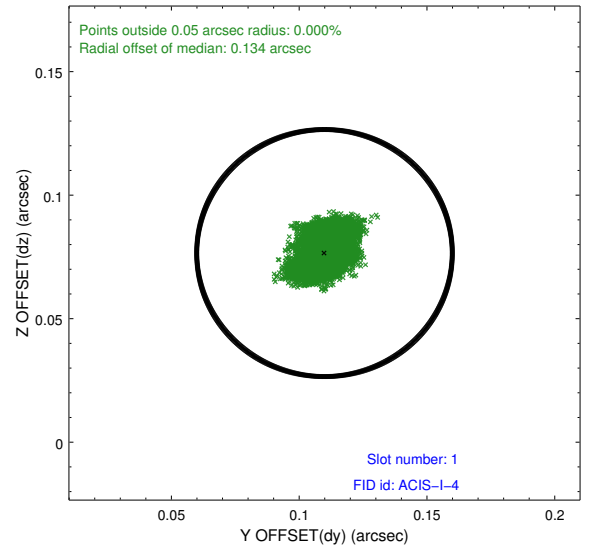
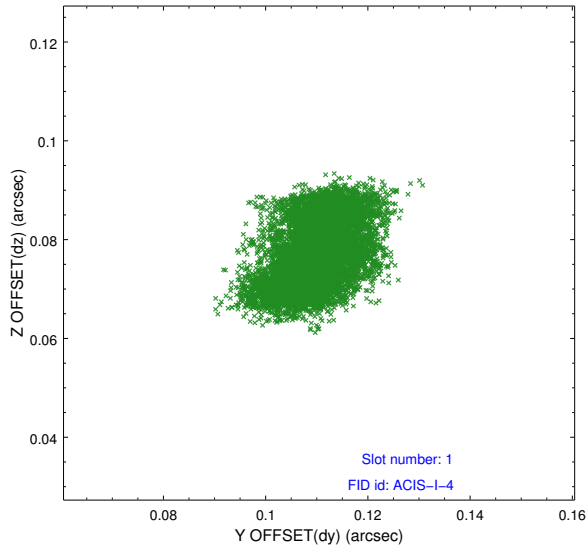


2.5 FID Slots

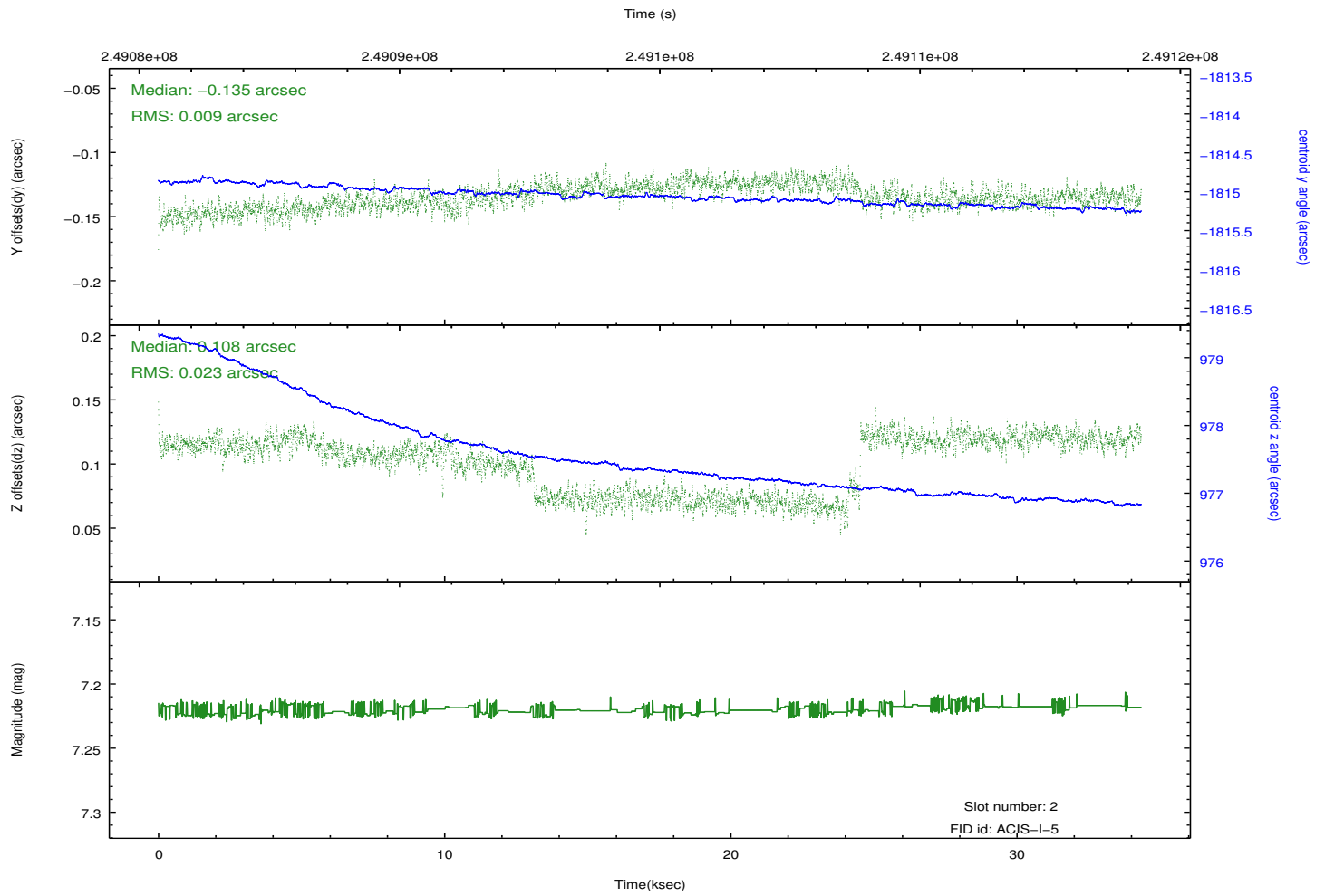
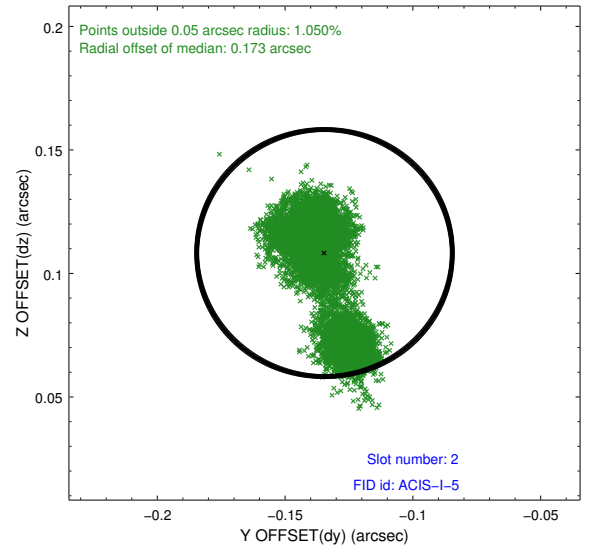
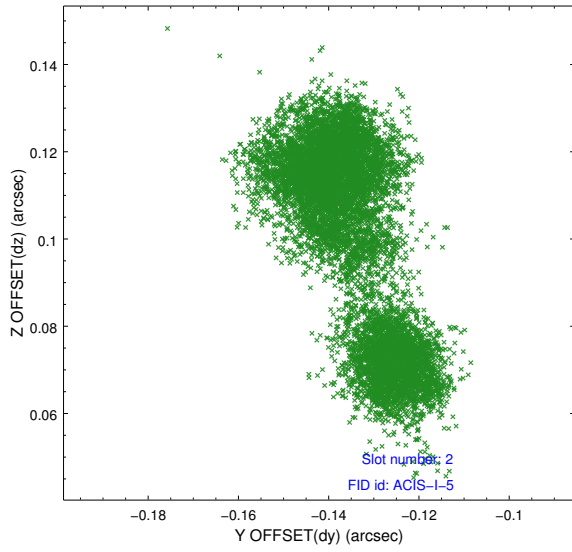
2.5.1 Slot 0



2.5.2 Slot 1



2.5.3 Slot 2



A Summary

A.1 Status

V&V Scientist	Jen Lauer
V&V Date (YYYY-MM-DD)	2012.03.19
V&V Edition	1
V&V Disposition and Status	OK
V&V Charge Time	34.33241

A.2 Comments