

# V&V Reference Report

## L2 ASCDS Version : 7.6.9

Observation 61127 - L2 Version 001  
Chandra X-Ray Center

L2 Processing Date : Sep 23 2006

## Contents

<b>1</b>	<b>Front</b>	<b>2</b>
<b>2</b>	<b>OBI</b>	<b>3</b>
2.1	OBI . . . . .	3
2.1.1	Images . . . . .	3
2.1.2	Bias . . . . .	3
2.1.3	Parameters . . . . .	4
2.1.4	Events . . . . .	4
2.2	Compared Parameters . . . . .	5
2.3	Aspect . . . . .	6
2.4	Star Slots . . . . .	8
2.5	FID Slots . . . . .	8
<b>A</b>	<b>Summary</b>	<b>9</b>
A.1	Status . . . . .	9
A.2	Comments . . . . .	9

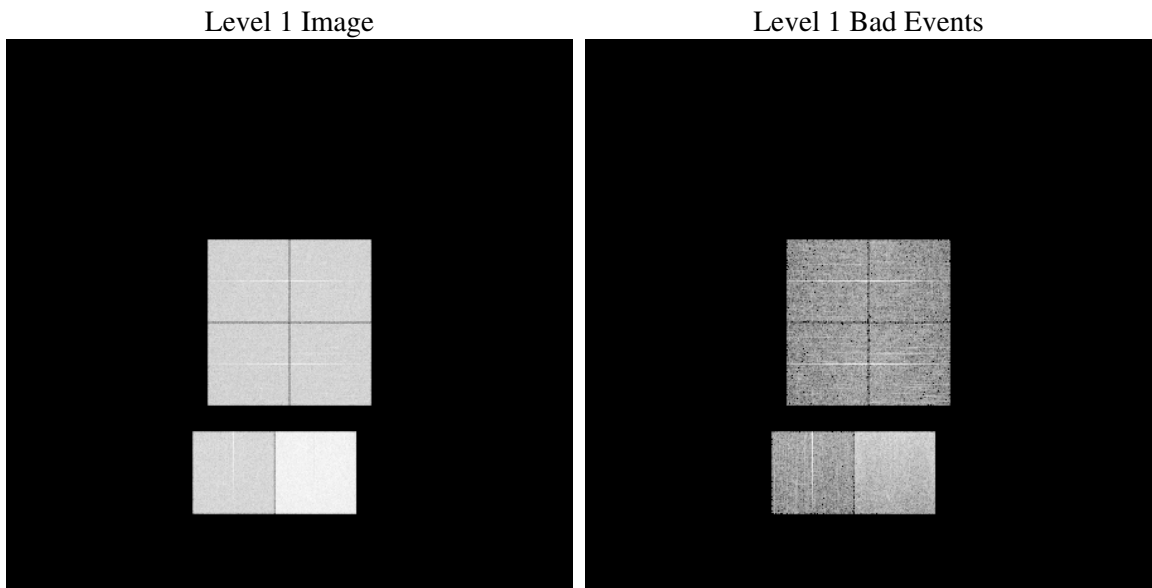
# 1 Front

seq_num	&#160
obs_id	61127
title	ACIS-012367 diagnostics
observer	CHANDRA engineering request/realtime commanding
object	&#160
dtcycle	0
cycle	P
ra_targ	0.0
dec_targ	0.0
ra_nom	163.69725612749
dec_nom	-20.828503794466
roll_nom	232.01528889942
revision	2
ontime	8351.9999688864
livetime	8246.2419163097
ontime0	3759.5450494587
ontime1	3894.5725849867
ontime2	3683.9478502274
ontime3	3735.6397721171
ontime6	4018.8253390491
ontime7	8351.9999688864
l2events	1274818

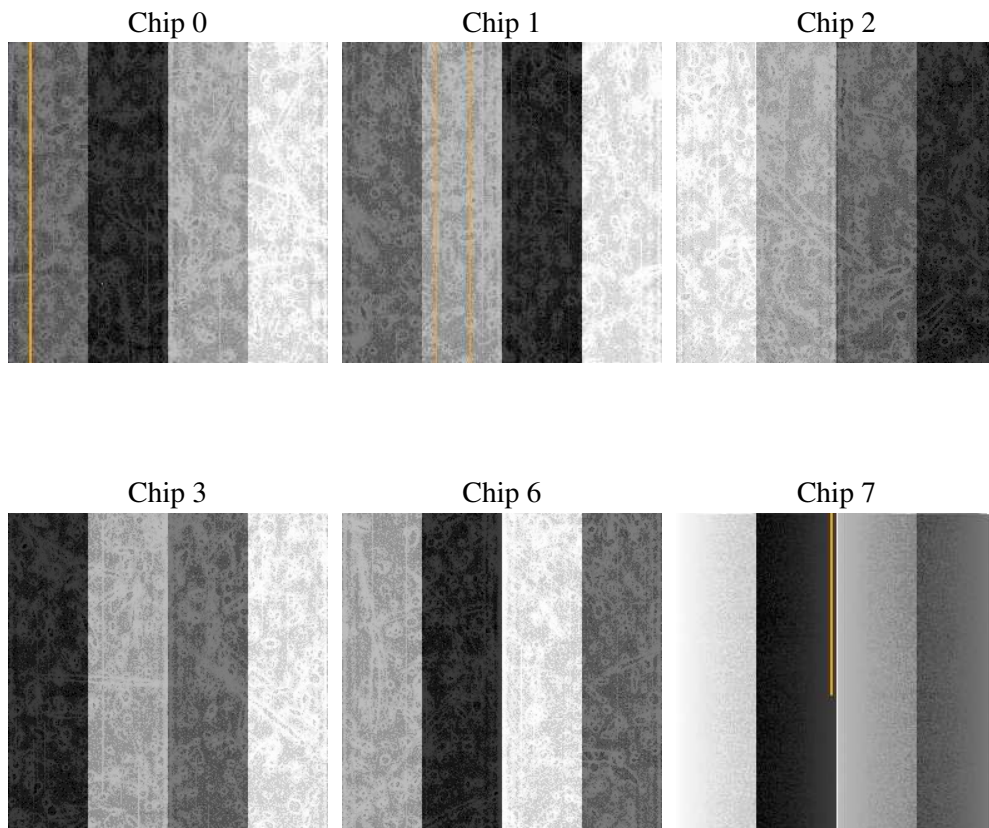
## 2 OBI

### 2.1 OBI

#### 2.1.1 Images



#### 2.1.2 Bias



### 2.1.3 Parameters

obi_num	0
ascdsver	7.6.9
caldbver	3.2.3
date	2006-09-23T03:54:41
revision	2

sched_exp_time	0.0
ontime	8465.4860675335
ontime0	3811.4527336955
ontime1	3937.8530743122
ontime2	3733.6693297327
ontime3	3788.7663818598
ontime6	4070.7330631912
ontime7	8465.4860675335
l1events	1556761

### 2.1.4 Events

	ccd 0	ccd 1	ccd 2	ccd 3	ccd 6	ccd 7
level 1 events	210480	216289	207915	213565	234721	473791
rejected events	30462	29716	30083	32180	33388	69853
rejected %	14%	13%	14%	15%	14%	14%

	ccd 0	ccd 1	ccd 2	ccd 3	ccd 6	ccd 7
grade 0 events	100287	104046	99468	102610	110594	71217
	47%	48%	47%	48%	47%	15%
grade 1 events	489	461	498	509	539	148
	0%	0%	0%	0%	0%	0%
grade 2 events	32696	33536	32457	32344	36101	126192
	15%	15%	15%	15%	15%	26%
grade 3 events	11558	11724	11072	11547	12256	29277
	5%	5%	5%	5%	5%	6%
grade 4 events	11379	11646	11123	11602	12342	28846
	5%	5%	5%	5%	5%	6%
grade 5 events	1854	1944	1762	1824	2246	8262
	0%	0%	0%	0%	0%	1%
grade 6 events	26619	27629	26148	25850	32748	153807
	12%	12%	12%	12%	13%	32%
grade 7 events	25598	25303	25387	27279	27895	56042
	12%	11%	12%	12%	11%	11%

## 2.2 Compared Parameters

Parameter	Planned	Actual	Parameter	Planned	Actual
Instrument	ACIS	ACIS	Obspar format version number	6	6
Detector	ACIS-012367	ACIS-012367	Obspar file type	PREDICTED	ACTUAL
Grating	NONE	NONE	Obspar update status	NONE	UPDATED
Data mode	FAINT	FAINT	On-chip summing requested	N	N
Observation mode	SECONDARY	SECONDARY	Subarray requested	NONE	NONE
Pointing RA	0	163.6972561274853	Alternating exposures requested	N	N
Pointing Dec	0	-20.82850379446582	Primary exposure time	3.2	3.2
Pointing Roll	0.0	232.0152888994247			
SIM focus pos (mm)	-0.782348	-0.6828225247311905			
SIM defocus (mm)	0	0.8505141146731063			
SIM translation stage pos (mm)	-233.592463	250.466033080201			
SIM translation stage offset (mm)	0	-0.01005468664627074			
Observation start time	143043285.181886	143043284.15716			
Observation start date	2002-07-14T14:14:45	2002-07-14T14:14:44			
Observation end time	143064594.932762	143064593.90804			
Observation end date	2002-07-14T20:09:55	2002-07-14T20:09:53			
Read mode	TIMED	TIMED			

## 2.3 Aspect



**2.4 Star Slots**

**2.5 FID Slots**

# A Summary

## A.1 Status

V&V Scientist	Beth Sundheim
V&V Date (YYYY-MM-DD)	2006.09.24
V&V Edition	1
V&V Disposition and Status	OK
V&V Charge Time	8.35199996

## A.2 Comments

Focal plane temperature is warmer than -118 degrees during most of observation. The ACIS calibrations are not verified or necessarily applicable for focal plane temperatures warmer than -118 degrees.