

V&V Reference Report

L2 ASCDS Version : 7.6.9

Observation 61447 - L2 Version 001
Chandra X-Ray Center

L2 Processing Date : Jan 5 2007

Contents

1	Front	2
2	OBI	3
2.1	OBI	3
2.1.1	Images	3
2.1.2	Bias	3
2.1.3	Parameters	4
2.1.4	Events	4
2.2	Compared Parameters	5
2.3	Aspect	6
2.4	Star Slots	8
2.5	FID Slots	8
A	Summary	9
A.1	Status	9
A.2	Comments	9

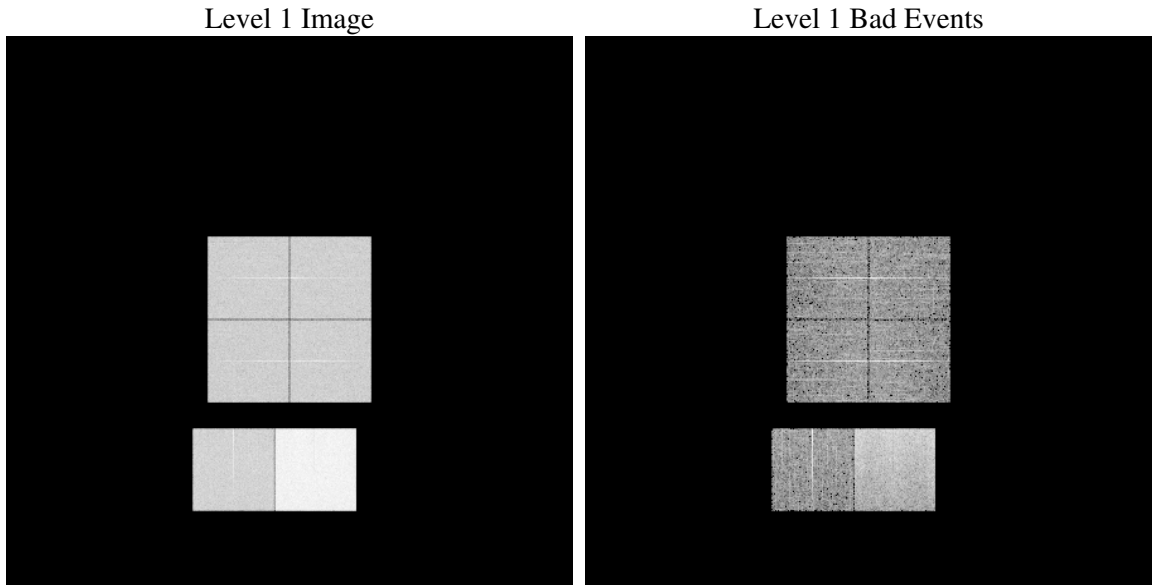
1 Front

seq_num	
obs_id	61447
title	ACIS-012367 diagnostics
observer	CHANDRA engineering request/realtime commanding
object	
dtcycle	0
cycle	P
ra_targ	0.0
dec_targ	0.0
ra_nom	310.03050598327
dec_nom	-40.016547067906
roll_nom	291.97392567529
revision	2
ontime	7634.9237046093
livetime	7538.2457034624
ontime0	3048.9379881322
ontime1	3062.8376630098
ontime2	2925.7791560441
ontime3	2991.4124604911
ontime6	3224.9716329128
ontime7	7634.9237046093
l2events	1298587

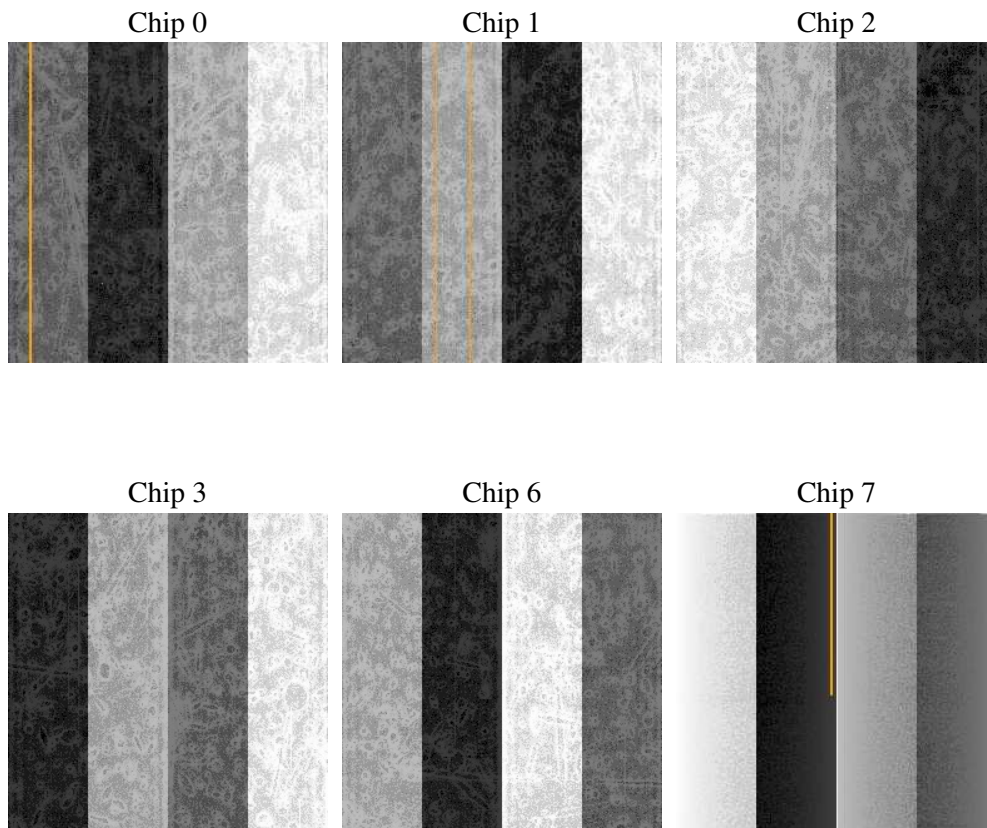
2 OBI

2.1 OBI

2.1.1 Images



2.1.2 Bias



2.1.3 Parameters

obi_num	0
ascdsver	7.6.9
caldbver	3.2.4
date	2007-01-05T18:36:14
revision	2

sched_exp_time	0.0
ontime	7752.476655364
ontime0	3088.7074142396
ontime1	3111.3941660821
ontime2	2972.0306123048
ontime3	3036.8510435969
ontime6	3270.2050160021
ontime7	7752.476655364
l1events	1543543

2.1.4 Events

	ccd 0	ccd 1	ccd 2	ccd 3	ccd 6	ccd 7
level 1 events	202783	204434	198094	203729	225013	509490
rejected events	24119	24850	25099	25787	26931	63581
rejected %	11%	12%	12%	12%	11%	12%

	ccd 0	ccd 1	ccd 2	ccd 3	ccd 6	ccd 7
grade 0 events	99276	100371	97775	100814	109494	82152
	48%	49%	49%	49%	48%	16%
grade 1 events	460	461	487	516	484	183
	0%	0%	0%	0%	0%	0%
grade 2 events	32531	32748	31140	31873	34767	138229
	16%	16%	15%	15%	15%	27%
grade 3 events	11321	11375	10907	11497	12236	33679
	5%	5%	5%	5%	5%	6%
grade 4 events	11186	11508	10999	11347	12341	32742
	5%	5%	5%	5%	5%	6%
grade 5 events	1555	1555	1534	1559	1862	7810
	0%	0%	0%	0%	0%	1%
grade 6 events	26553	26436	24874	25101	32064	165801
	13%	12%	12%	12%	14%	32%
grade 7 events	19901	19980	20378	21022	21765	48894
	9%	9%	10%	10%	9%	9%

2.2 Compared Parameters

Parameter	Planned	Actual	Parameter	Planned	Actual
Instrument	ACIS	ACIS	Obspar format version number	6	6
Detector	ACIS-012367	ACIS-012367	Obspar file type	PREDICTED	ACTUAL
Grating	NONE	NONE	Obspar update status	NONE	UPDATED
Data mode	FAINT	FAINT	On-chip summing requested	N	N
Observation mode	SECONDARY	SECONDARY	Subarray requested	NONE	NONE
Pointing RA	0	310.0305059832746	Alternating exposures requested	N	N
Pointing Dec	0	-40.01654706790607	Primary exposure time	0.000000	3.2
Pointing Roll	0.0	291.9739256752939			
SIM focus pos (mm)	-0.782348	-0.6828225247311905			
SIM defocus (mm)	0	0.8505141146731063			
SIM translation stage pos (mm)	-233.592463	250.466033080201			
SIM translation stage offset (mm)	0	-0.01005468664627074			
Observation start time	118825787.297	118825786.5288			
Observation start date	2001-10-07T07:09:47	2001-10-07T07:09:46			
Observation end time	118847097.048	118847096.27964			
Observation end date	2001-10-07T13:04:57	2001-10-07T13:04:56			
Read mode	TIMED	TIMED			

2.3 Aspect

2.4 Star Slots

2.5 FID Slots

A Summary

A.1 Status

V&V Scientist	Beth Sundheim
V&V Date (YYYY-MM-DD)	2007.01.05
V&V Edition	1
V&V Disposition and Status	OK
V&V Charge Time	7.6349237

A.2 Comments

Focal plane temperature is warmer than -118.7 C degrees during the entire observation. This temperature is the upper limit of the verified ACIS calibration for the front-illuminated chips.