

V&V Reference Report

L2 ASCDS Version : 8.5

Observation 6167 - L2 Version 3
Chandra X-Ray Center

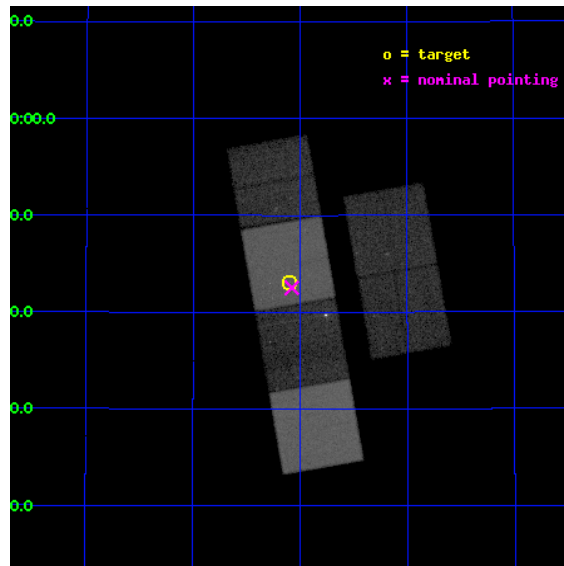
L2 Processing Date : Dec 12 2012

Contents

1	Front	2
2	OBI	3
2.1	OBI	3
2.1.1	Images	3
2.1.2	Bias	3
2.1.3	Parameters	4
2.1.4	Events	4
2.2	Compared Parameters	5
2.3	Aspect	6
2.4	Star Slots	9
2.4.1	Slot 3	9
2.4.2	Slot 4	10
2.4.3	Slot 5	11
2.4.4	Slot 6	12
2.4.5	Slot 7	13
2.5	FID Slots	14
2.5.1	Slot 0	14
2.5.2	Slot 1	15
2.5.3	Slot 2	16
A	Summary	17
A.1	Status	17
A.2	Comments	17

1 Front

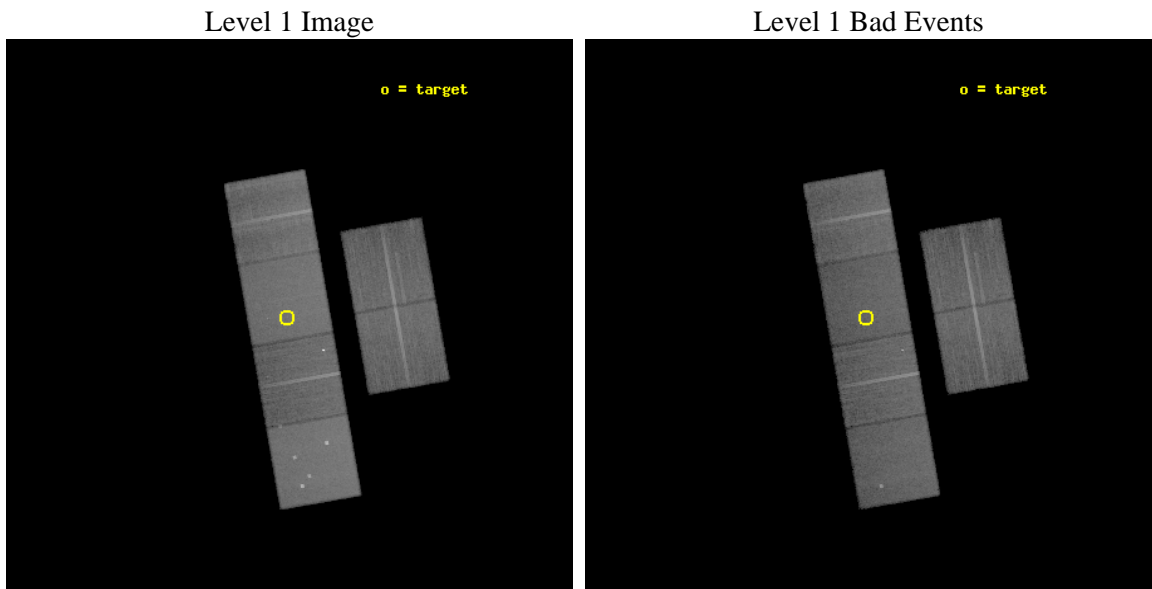
seq_num	300135	Sequence number
obs_id	6167	Observation id
title	Understanding the nature of supersoft X-ray sources	Proposal title
observer	Dr. Jochen Greiner	Principal investigator
object	M31-0046.0+4143	Source name
dtycycle	0	
cycle	P	events from which exps? Prim/Second/Both
ra_targ	11.52375	Observer's specified target RA [deg]
dec_targ	41.717778	Observer's specified target Dec [deg]
ra_nom	11.519299851696	Nominal RA [deg]
dec_nom	41.708682434151	Nominal Dec [deg]
roll_nom	260.01958480711	Nominal Roll [deg]
revision	3	Processing version of data
ontime	24534.399908602	Sum of GTIs [s]
livetime	24223.730564117	Livetime [s]
ontime2	24534.399908602	Sum of GTIs [s]
ontime3	24534.399908602	Sum of GTIs [s]
ontime5	24534.399908602	Sum of GTIs [s]
ontime6	24534.399908602	Sum of GTIs [s]
ontime7	24534.399908602	Sum of GTIs [s]
ontime8	24534.399908602	Sum of GTIs [s]
l2events	322214	Number of level 2 events



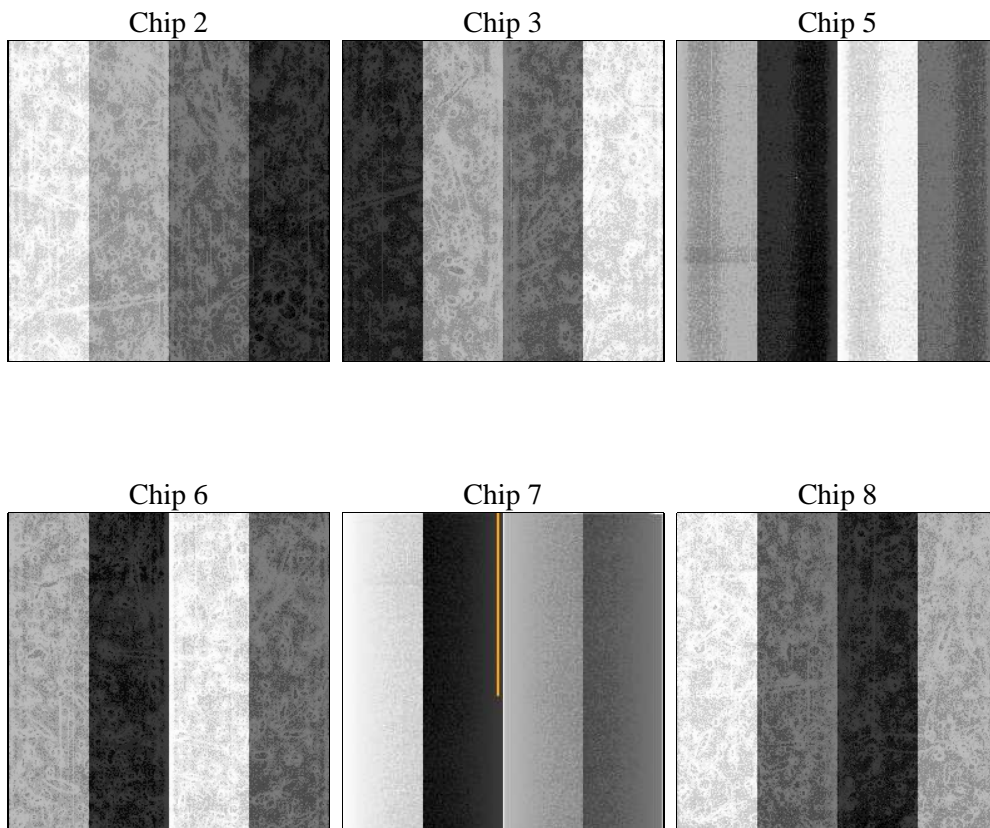
2 OBI

2.1 OBI

2.1.1 Images



2.1.2 Bias



2.1.3 Parameters

obi_num	0	Obi number	sched_exp_time	24500.000000	[s] Scheduled observation exposure time
ascdsver	8.5	Processing system revision	ontime	24534.399908602	Sum of GTIs [s]
caldbver	4.5.4	 	ontime2	24534.399908602	Sum of GTIs [s]
date	2012-12-12T01:56:37	Date and time of file creation	ontime3	24534.399908602	Sum of GTIs [s]
revision	3	Processing version of data	ontime5	24534.399908602	Sum of GTIs [s]
			ontime6	24534.399908602	Sum of GTIs [s]
			ontime7	24534.399908602	Sum of GTIs [s]
			ontime8	24534.399908602	Sum of GTIs [s]
			l1events	1386010	Number of level 1 events

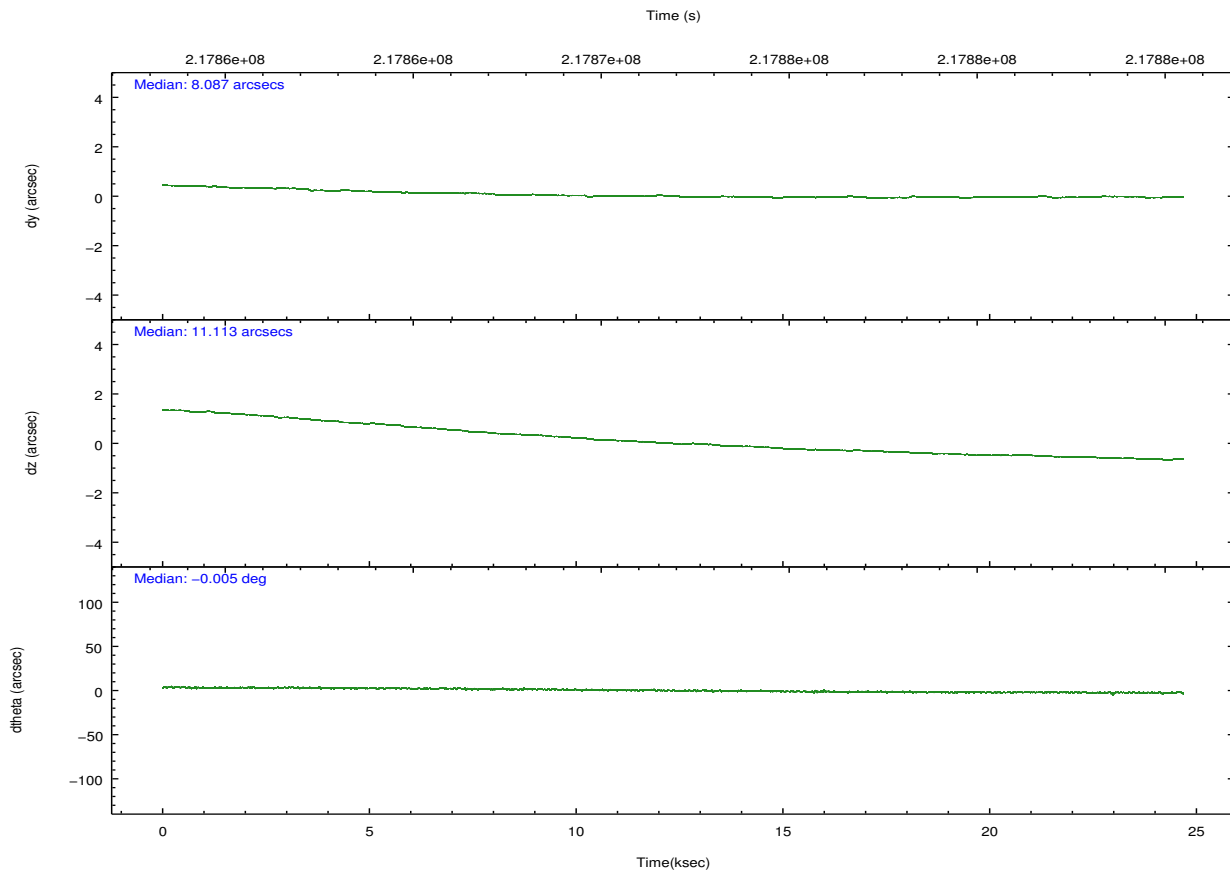
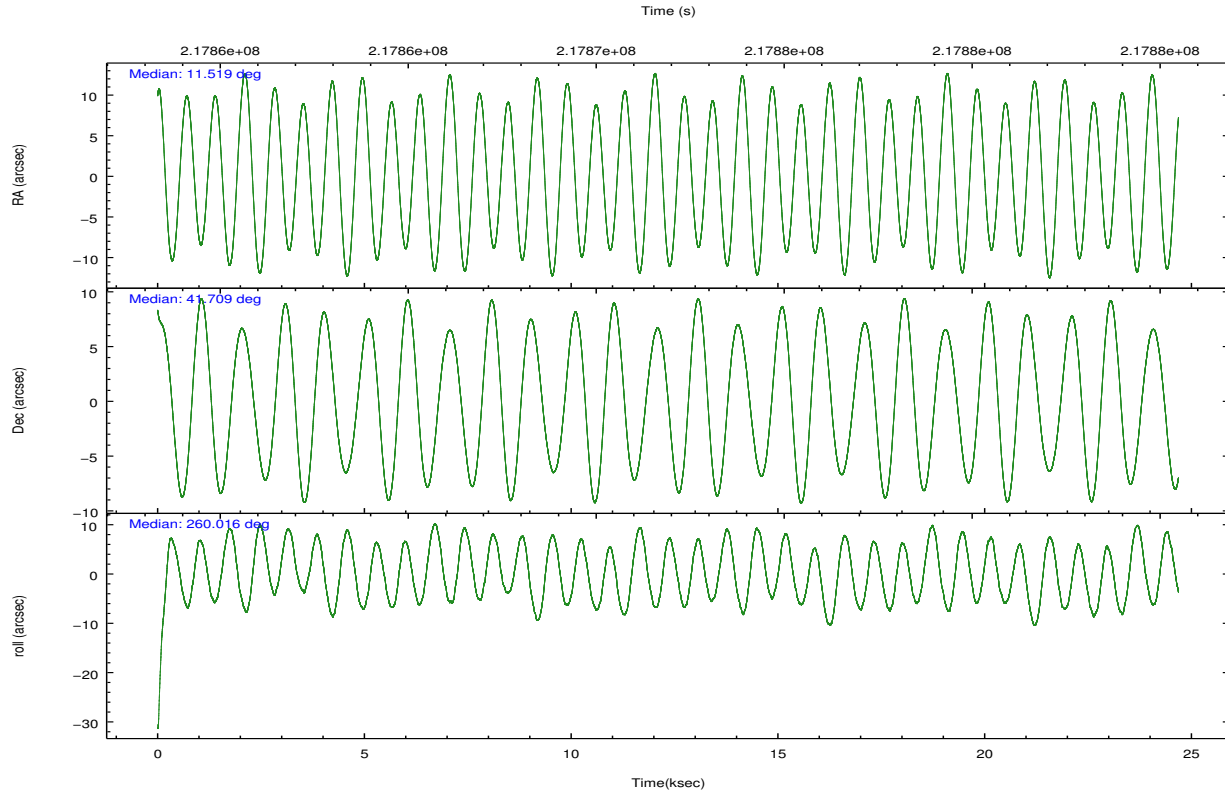
2.1.4 Events

	ccd 2	ccd 3	ccd 5	ccd 6	ccd 7	ccd 8		ccd 2	ccd 3	ccd 5	ccd 6	ccd 7	ccd 8
level 1 events	198358	187350	291805	207633	257382	243482	grade 0 events	10037	9937	17911	19588	9488	16129
rejected events	175710	165022	155180	170840	150470	192018		5%	5%	6%	9%	3%	6%
rejected %	88%	88%	53%	82%	58%	78%	grade 1 events	124	119	393	739	220	162
								0%	0%	0%	0%	0%	0%
							grade 2 events	4646	4194	39612	6556	21071	11668
								2%	2%	13%	3%	8%	4%
							grade 3 events	2132	2067	5254	2823	9471	5286
								1%	1%	1%	1%	3%	2%
							grade 4 events	2059	2156	5014	2722	9276	4962
								1%	1%	1%	1%	3%	2%
							grade 5 events	7543	8405	21450	9040	24698	11741
								3%	4%	7%	4%	9%	4%
							grade 6 events	3781	3979	68874	5116	57636	13460
								1%	2%	23%	2%	22%	5%
							grade 7 events	168036	156493	133297	161049	125522	180074
								84%	83%	45%	77%	48%	73%

2.2 Compared Parameters

Parameter	Planned	Actual	Parameter	Planned	Actual
Instrument	ACIS	ACIS	Obspar format version number	7	7
Detector	ACIS-235678	ACIS-235678	Obspar file type	PREDICTED	ACTUAL
Grating	NONE	NONE	Obspar update status	NONE	UPDATED
Data mode	FAINT	FAINT	Number of optional ACIS chips dropped	0	0
Observation mode	POINTING	POINTING	On-chip summing requested	N	N
[deg] Pointing RA	11.506348	11.51929985169613	Subarray requested	NONE	NONE
[deg] Pointing Dec	41.734153	41.70868243415144	Alternating exposures requested	N	N
[deg] Pointing Roll	259.871585	260.019584807114	[s] Primary exposure time	0.000000	3.2
[mm] SIM focus pos	-0.684267	-0.6828225247311905			
[mm] SIM defocus	0	0.001444936568705701			
[mm] SIM translation stage pos	-190.132523	-190.1400660498719			
[mm] SIM translation stage offset	0	0.00754346686406393			
[s] Observation start time (MET)	217859754.184000	217858609.324			
Observation start date	2004-11-26T12:34:50	2004-11-26T12:16:49			
[s] Observation end time (MET)	217884254.184000	217885393.6002			
Observation end date	2004-11-26T19:23:10	2004-11-26T19:43:13			
Read mode	TIMED	TIMED			

2.3 Aspect

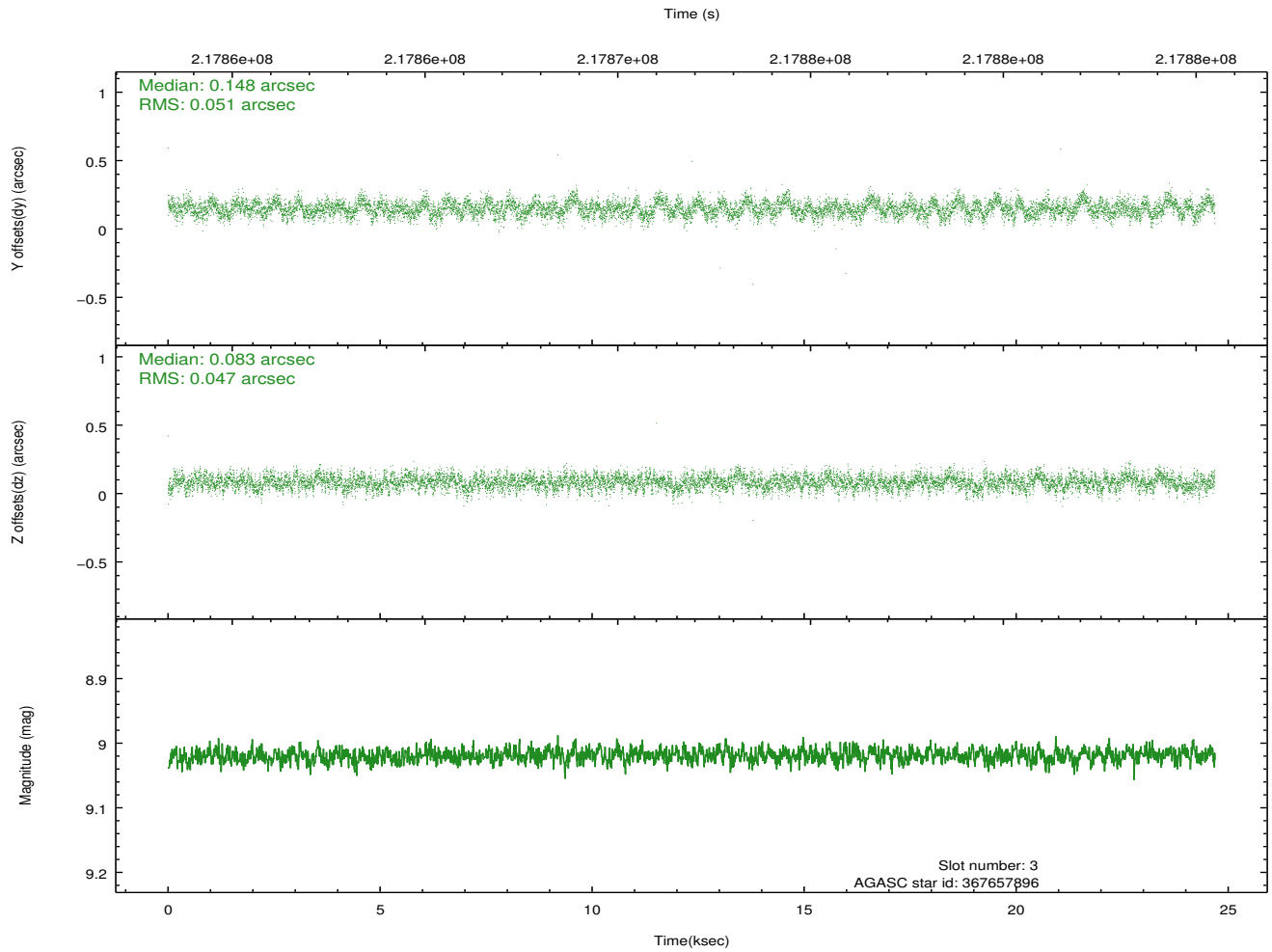
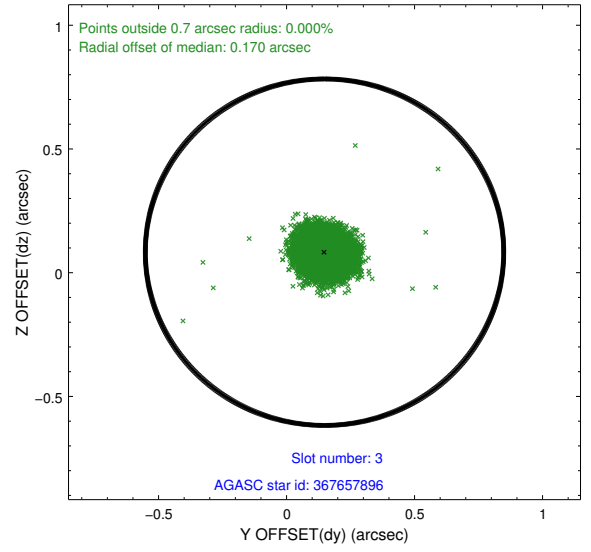
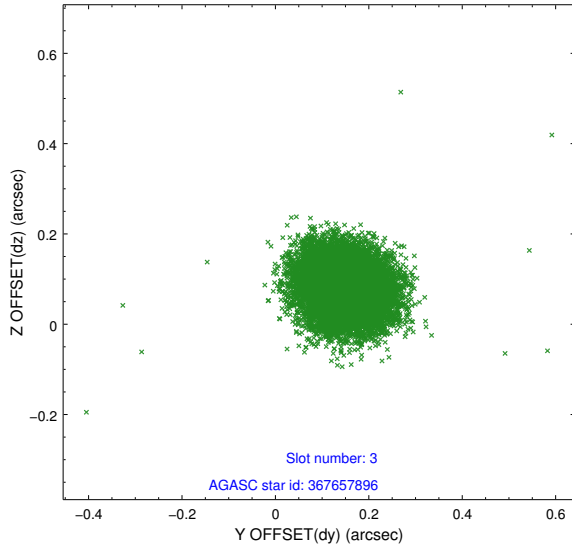


Slot Statistics

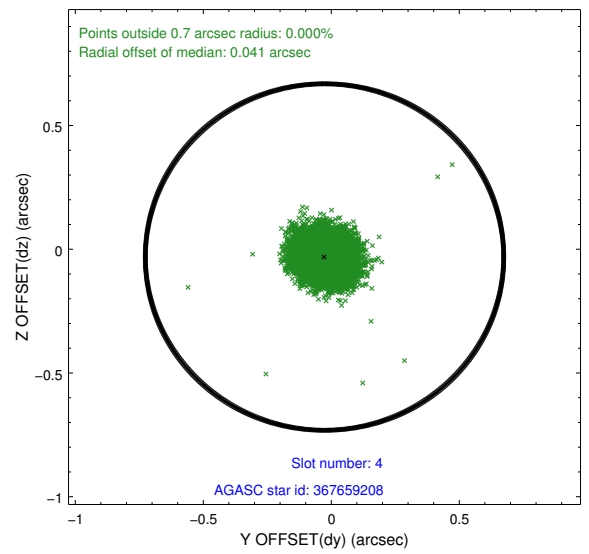
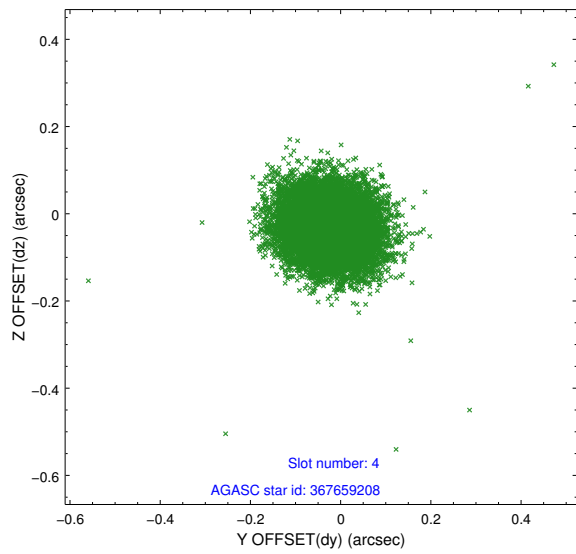
slot	status	id	mag	n_pts	med_dy	med_dz	dr1	dr2	ra	dec	mean_y	mean_z
0	FID	ACIS-S-1	7.19	6021	0.054	-0.077	0.022	0.030	0.000000	0.000000	935.14	-1728.25
1	FID	ACIS-S-5	7.24	6021	-0.087	0.030	0.014	0.033	0.000000	0.000000	-1813.92	169.31
2	FID	ACIS-S-6	7.35	6020	0.011	0.056	0.015	0.034	0.000000	0.000000	400.54	813.41
3	GUIDE	367657896	9.02	12035	0.148	0.083	0.073	0.117	11.197765	41.313576	1636.12	-555.02
4	GUIDE	367659208	9.29	12035	-0.026	-0.032	0.080	0.130	11.848231	42.124331	-1545.00	651.44
5	GUIDE	367663272	9.28	12041	-0.082	-0.031	0.096	0.162	10.656279	41.699429	514.15	-2229.36
6	GUIDE	367670520	9.24	12040	-0.020	0.019	0.088	0.142	11.265516	42.371946	-2148.19	-1034.56
7	GUIDE	367145056	7.41	12040	-0.022	-0.044	0.072	0.109	12.259409	41.132018	1766.07	2390.24

2.4 Star Slots

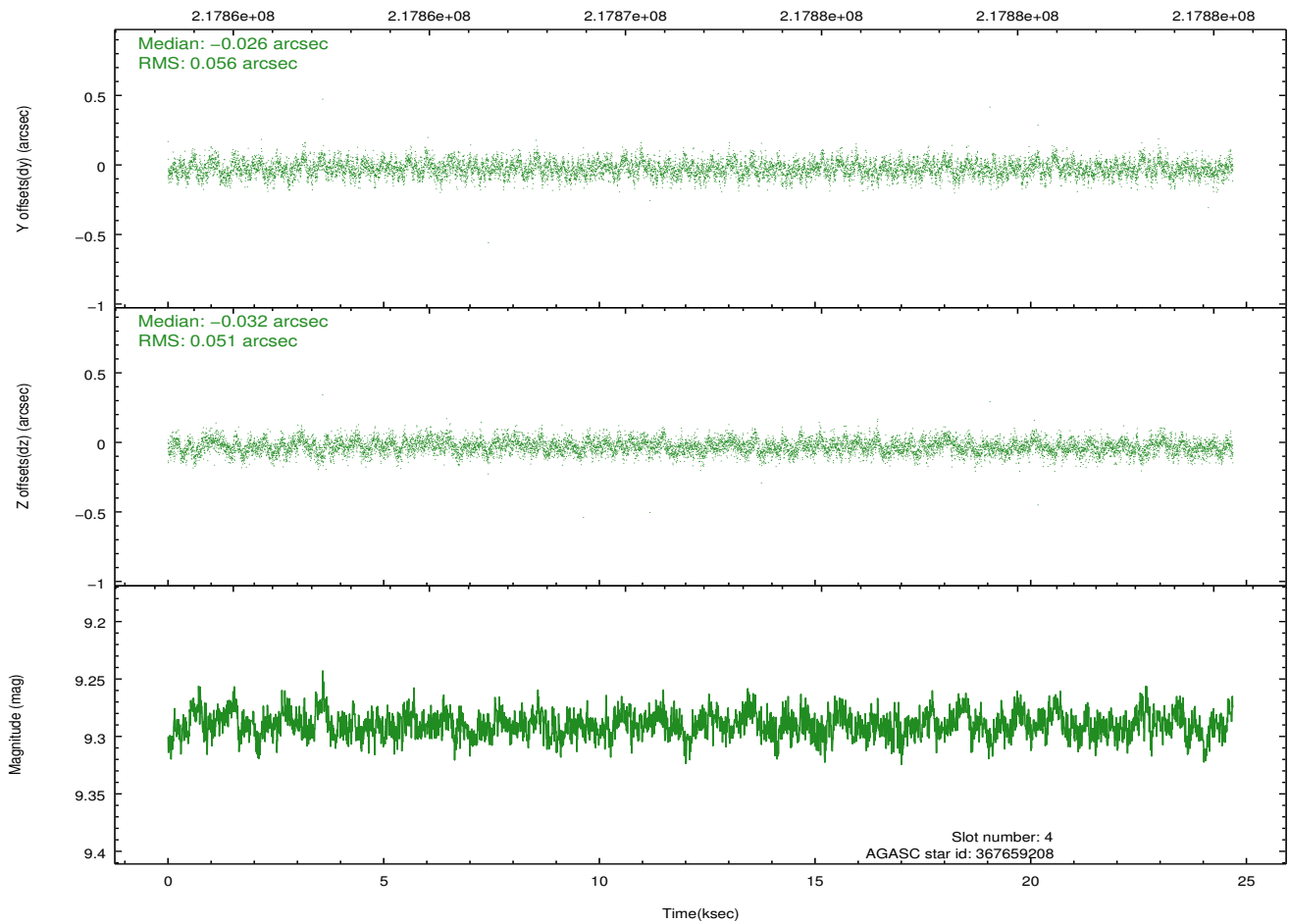
2.4.1 Slot 3



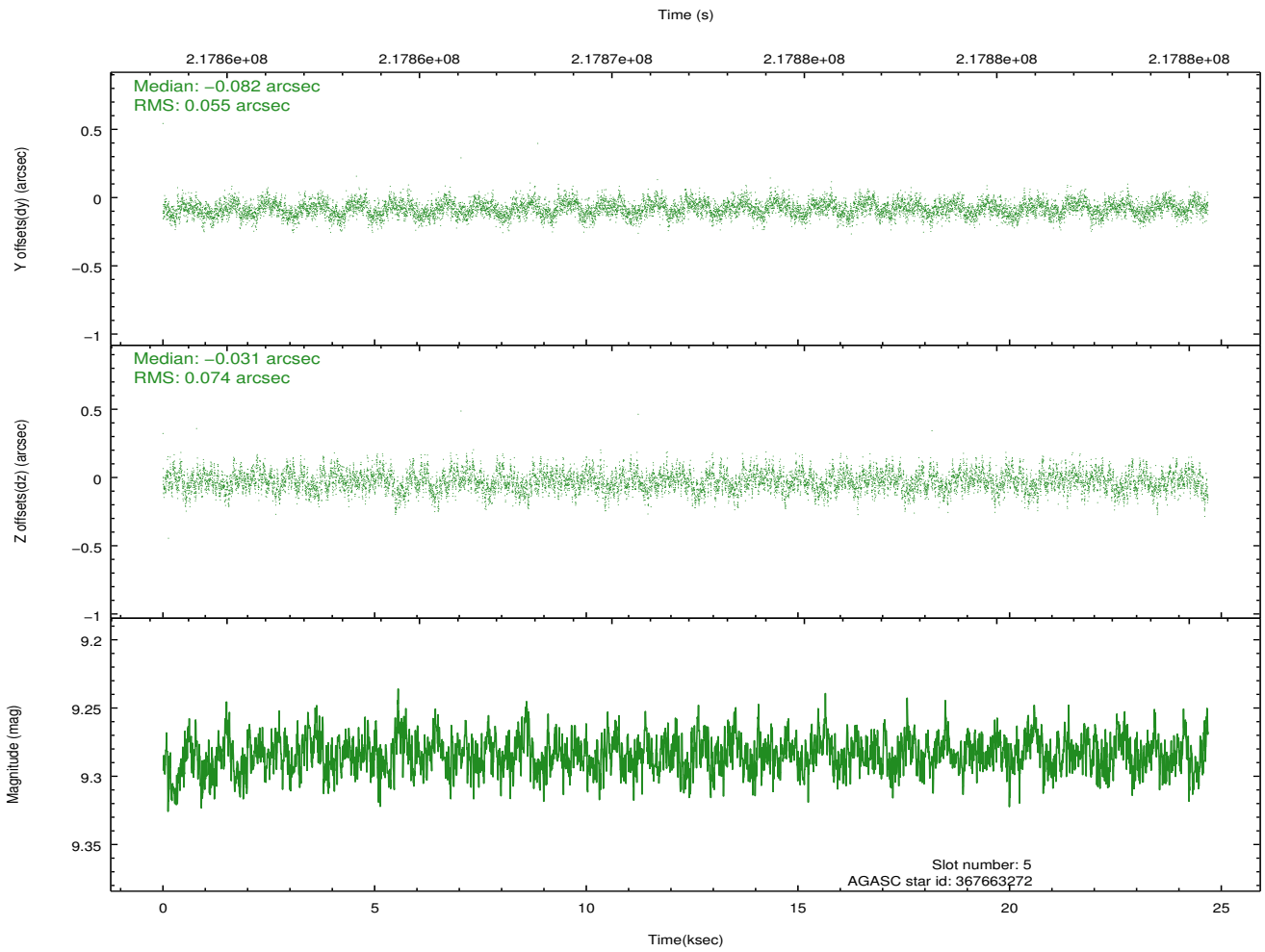
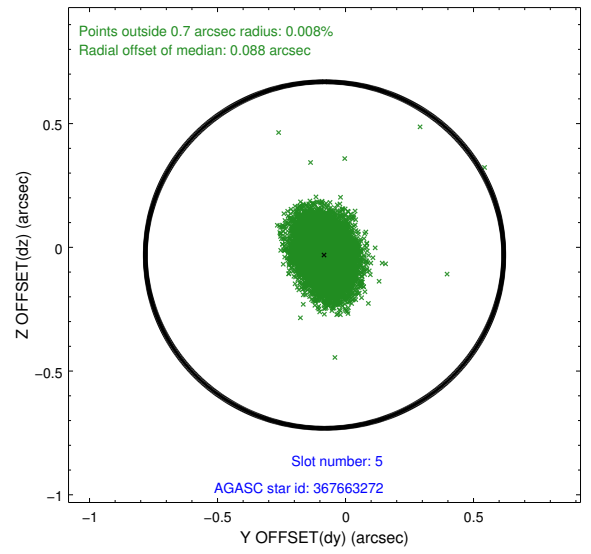
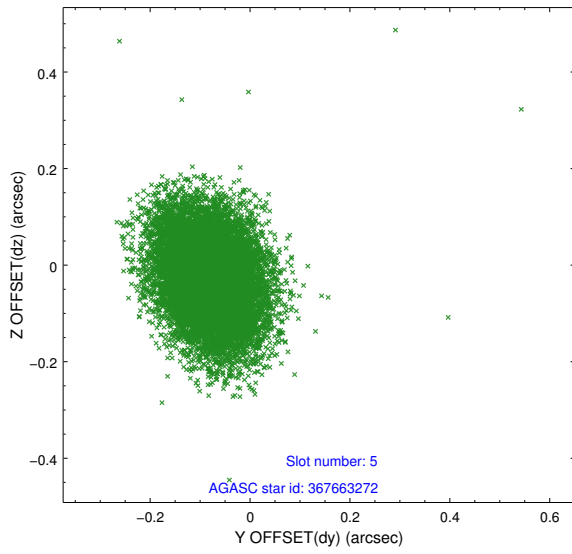
2.4.2 Slot 4



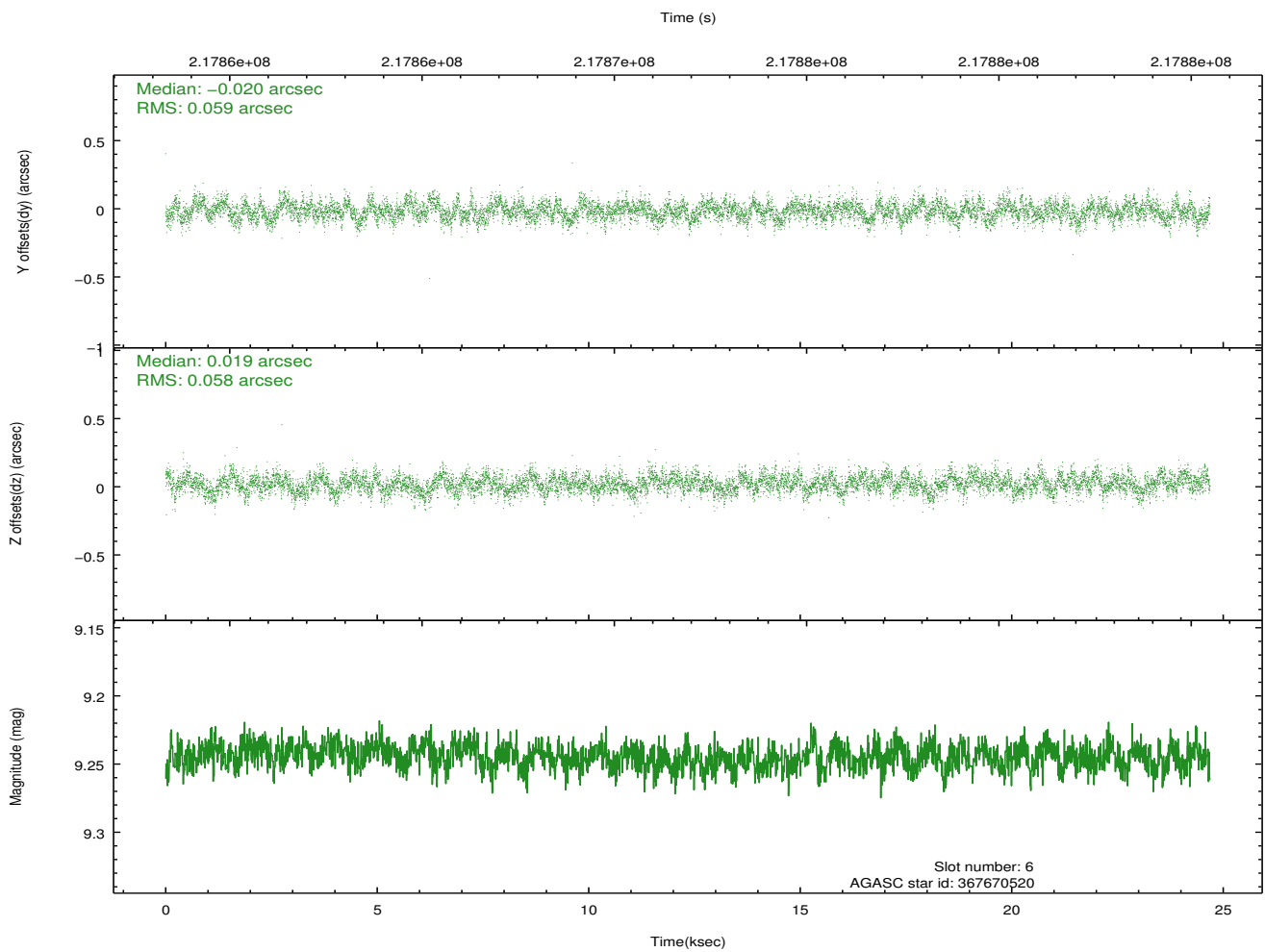
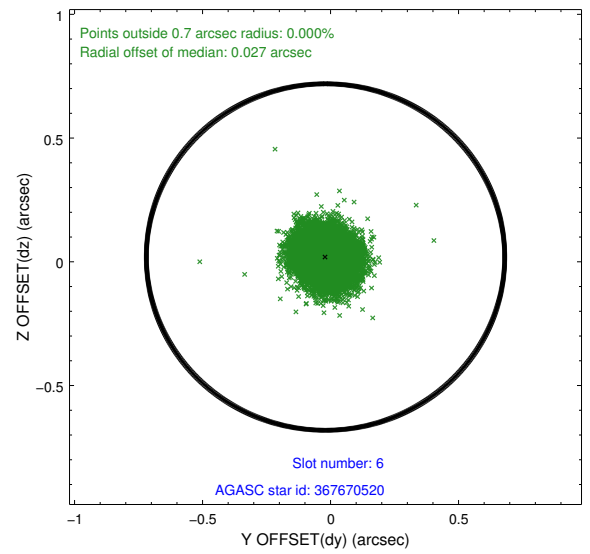
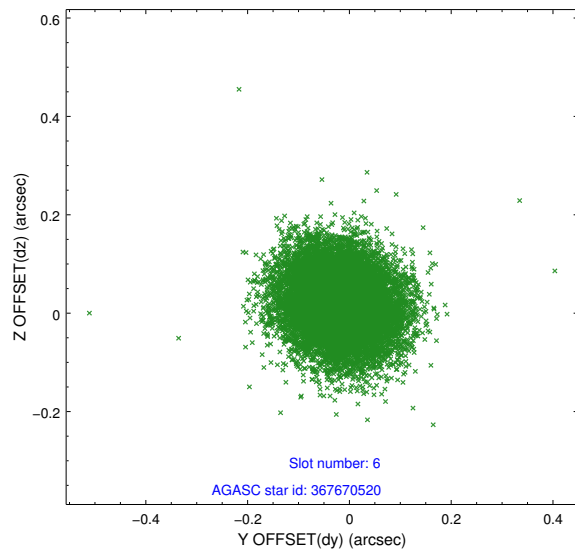
Time (s)



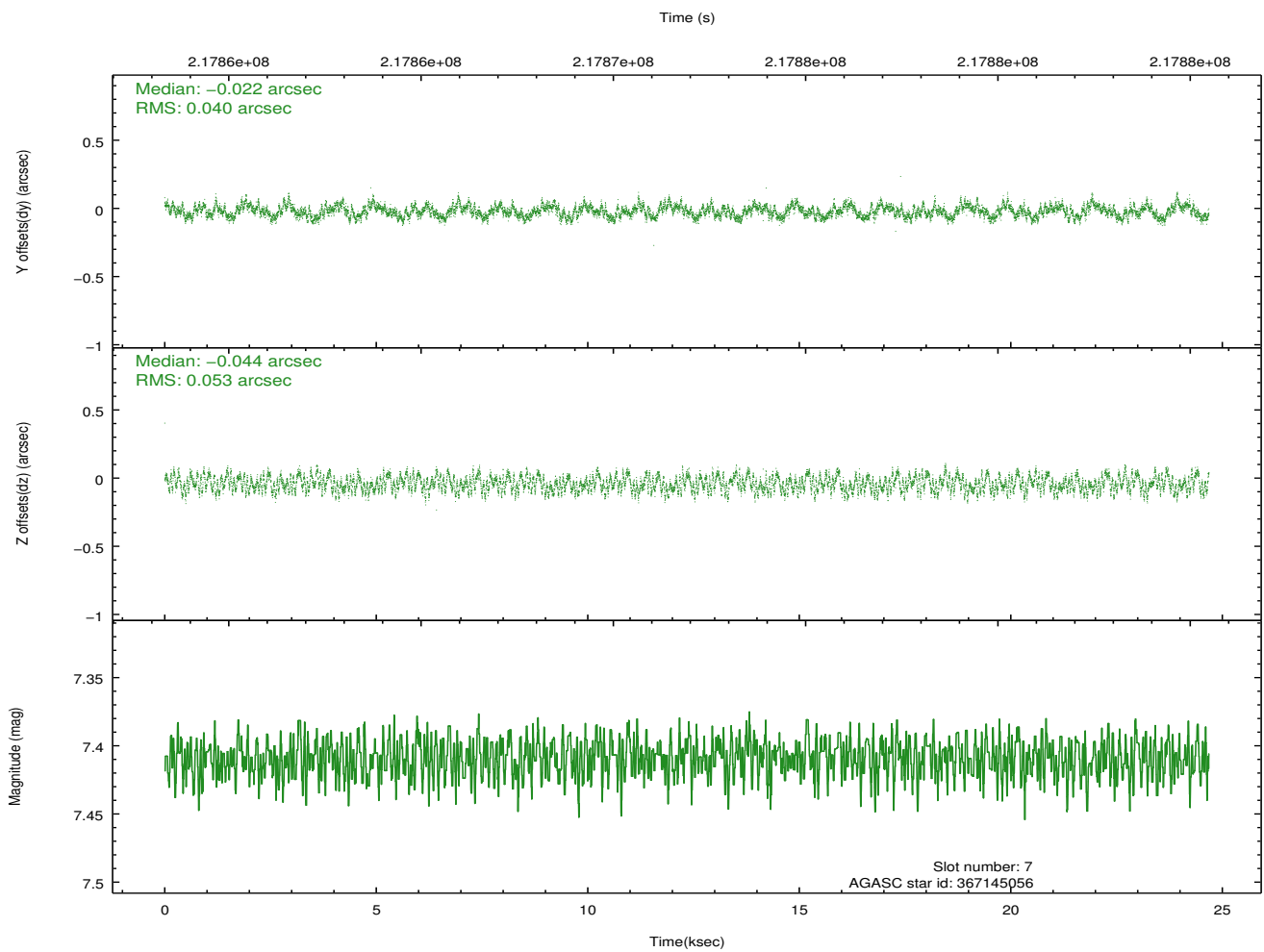
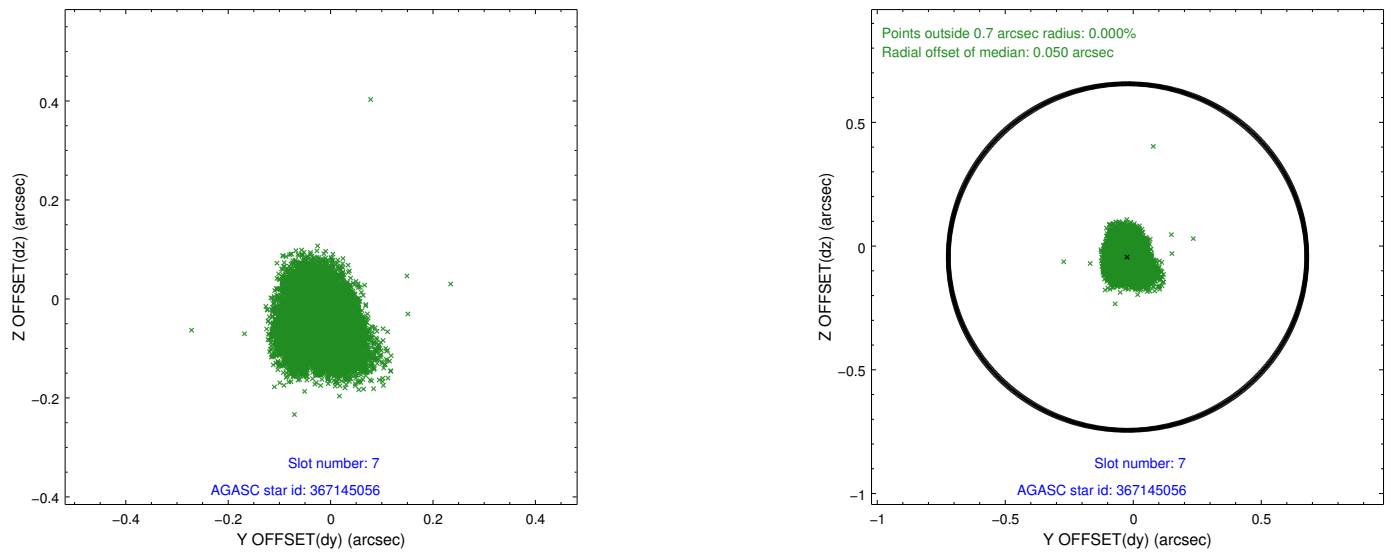
2.4.3 Slot 5



2.4.4 Slot 6

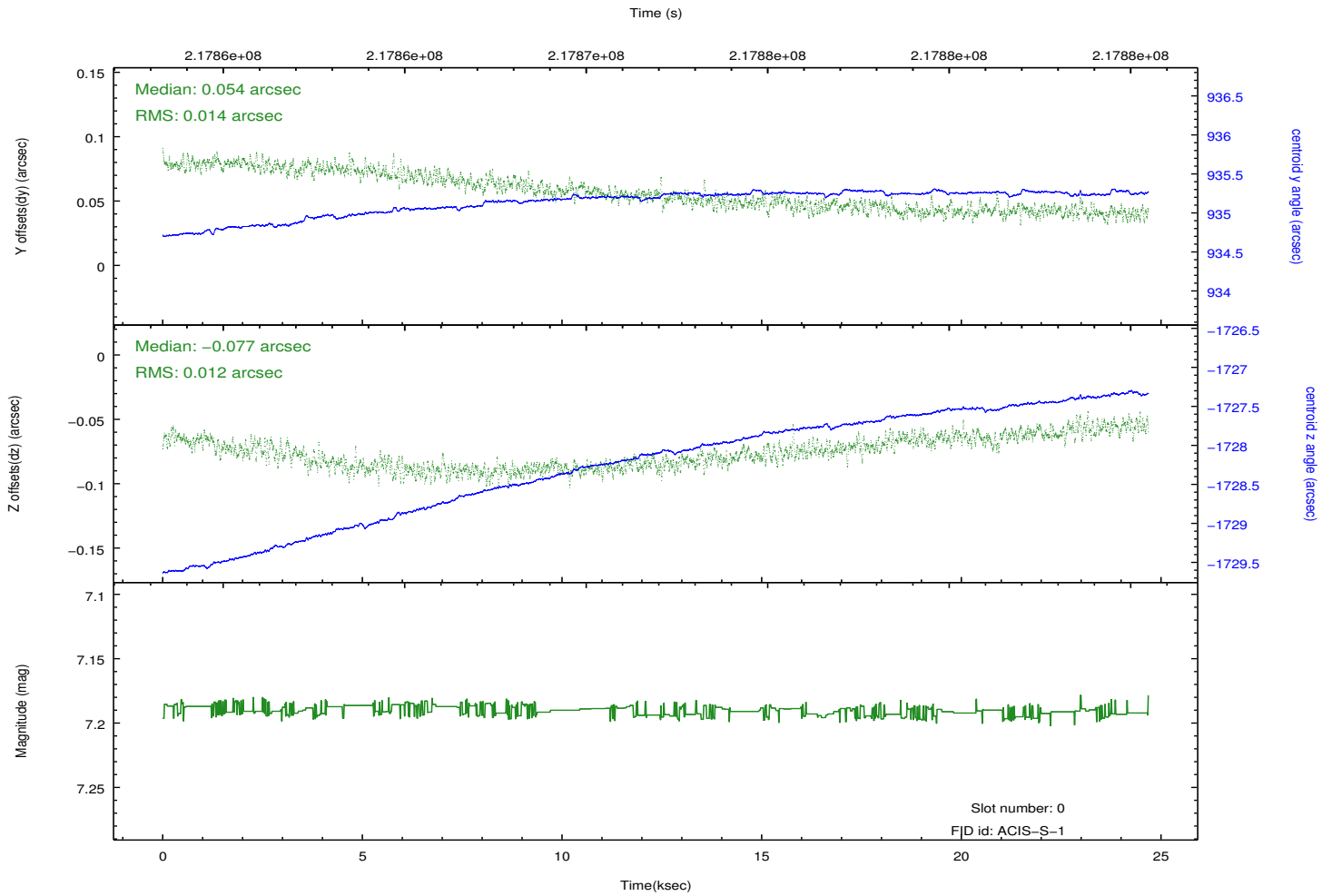
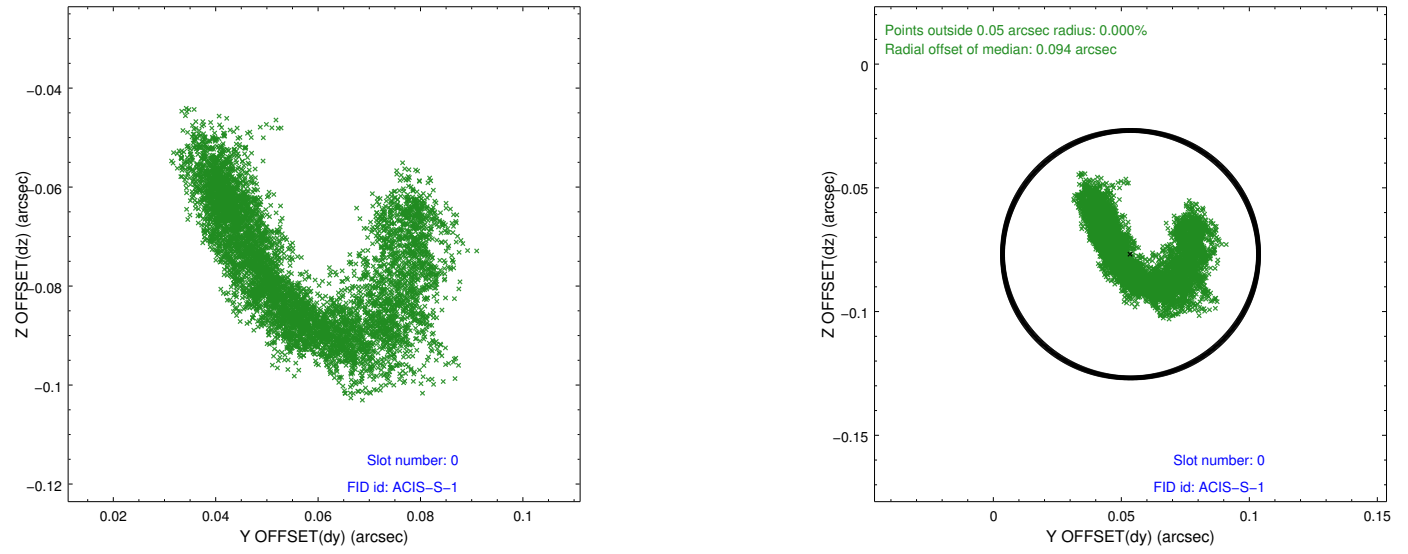


2.4.5 Slot 7

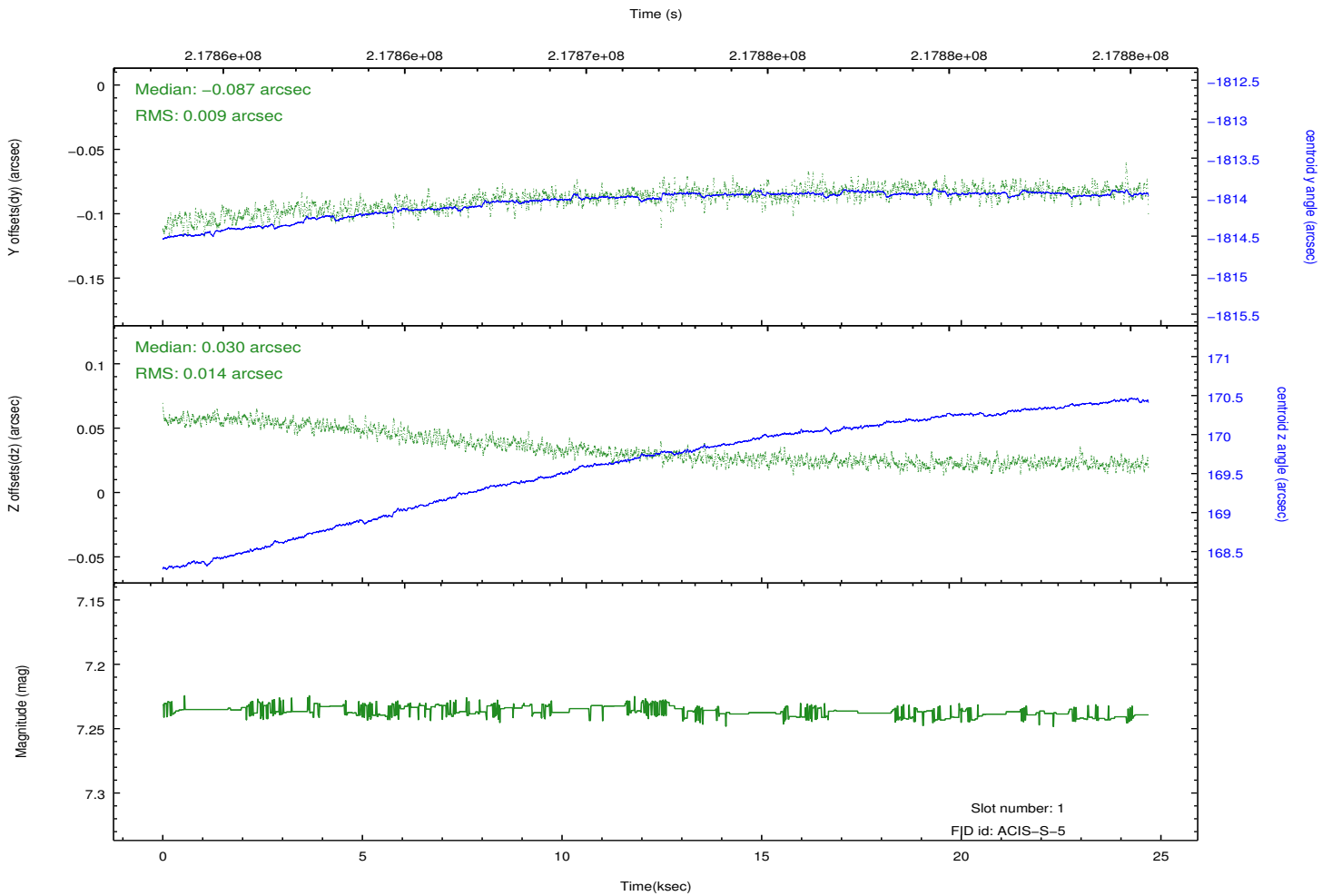
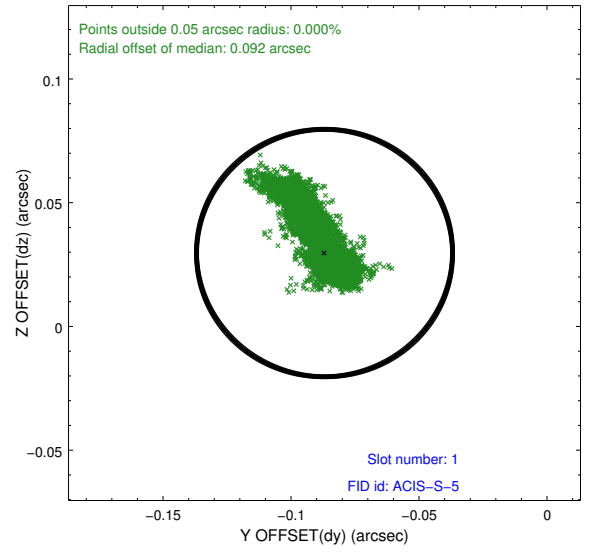
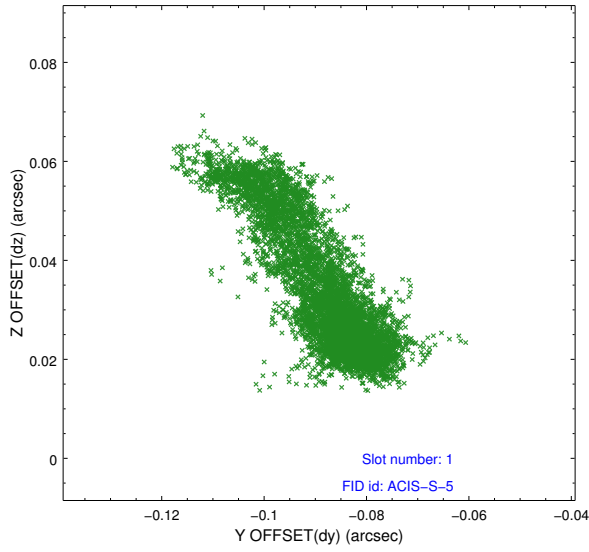


2.5 FID Slots

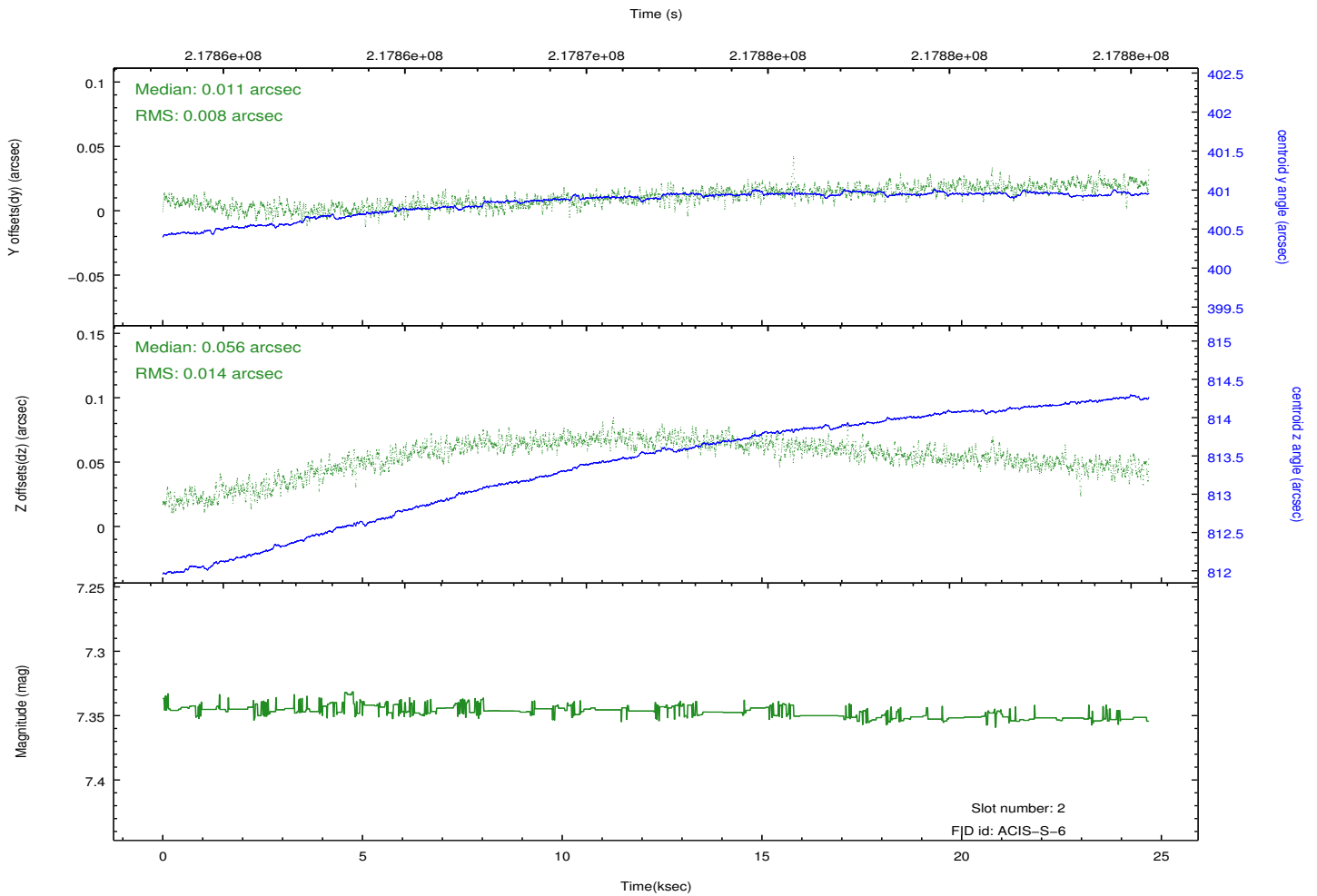
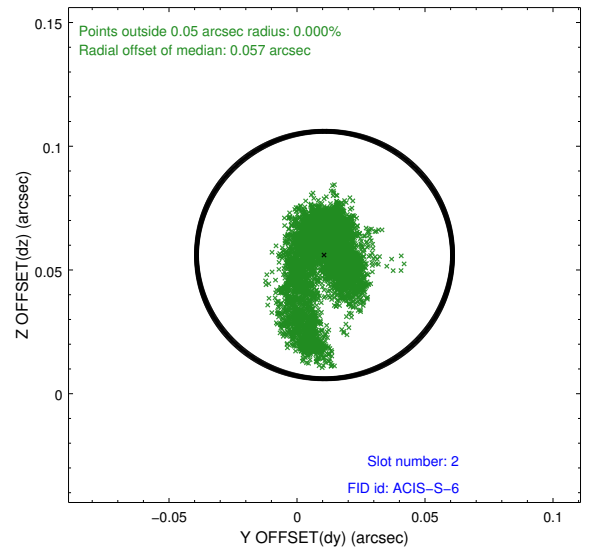
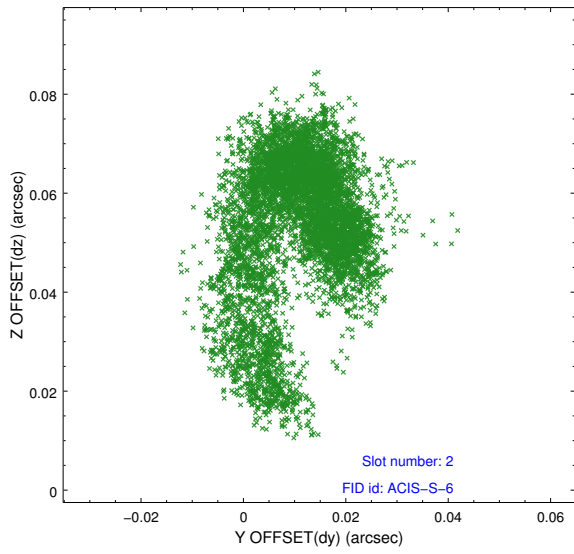
2.5.1 Slot 0



2.5.2 Slot 1



2.5.3 Slot 2



A Summary

A.1 Status

V&V Scientist	Jen Lauer
V&V Date (YYYY-MM-DD)	2013.01.02
V&V Edition	1
V&V Disposition and Status	OK
V&V Charge Time	24.53439

A.2 Comments