

V&V Reference Report

L2 ASCDS Version : 8.4.5

Observation 61897 - L2 Version 4
Chandra X-Ray Center

L2 Processing Date : Sep 5 2012

Contents

1	Front	2
2	OBI	3
2.1	OBI	3
2.1.1	Images	3
2.1.2	Bias	3
2.1.3	Parameters	4
2.1.4	Events	4
2.2	Compared Parameters	5
2.3	Star Slots	6
2.4	FID Slots	6
A	Summary	7
A.1	Status	7
A.2	Comments	7

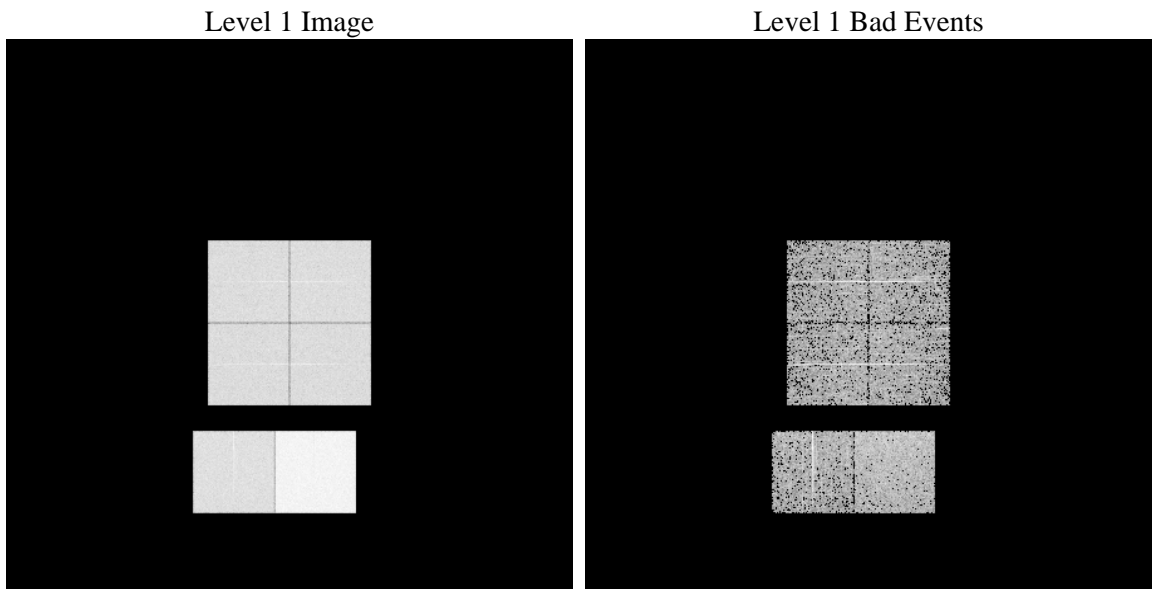
1 Front

seq_num	 	Sequence number
obs_id	61897	Observation id
title	ACIS-012367 diagnostics	Proposal title
observer	CHANDRA engineering request/realtime commanding	Principal investig
object	 	Source name
dtycycle	0	
cycle	P	events from which exps? Prim/Second/Both
ra_targ	0.0	Observer's specified target RA [deg]
dec_targ	0.0	Observer's specified target Dec [deg]
ra_nom	330.44913706249	Nominal RA [deg]
dec_nom	-44.376467668142	Nominal Dec [deg]
roll_nom	314.45882885112	Nominal Roll [deg]
revision	4	Processing version of data
ontime	4083.6791065484	Sum of GTIs [s]
livetime	4031.969102805	Livetime [s]
ontime0	1798.7753111124	Sum of GTIs [s]
ontime1	1811.7395208776	Sum of GTIs [s]
ontime2	1708.0261016488	Sum of GTIs [s]
ontime3	1708.026350826	Sum of GTIs [s]
ontime6	1883.1731556952	Sum of GTIs [s]
ontime7	4083.6791065484	Sum of GTIs [s]
l2events	967284	Number of level 2 events

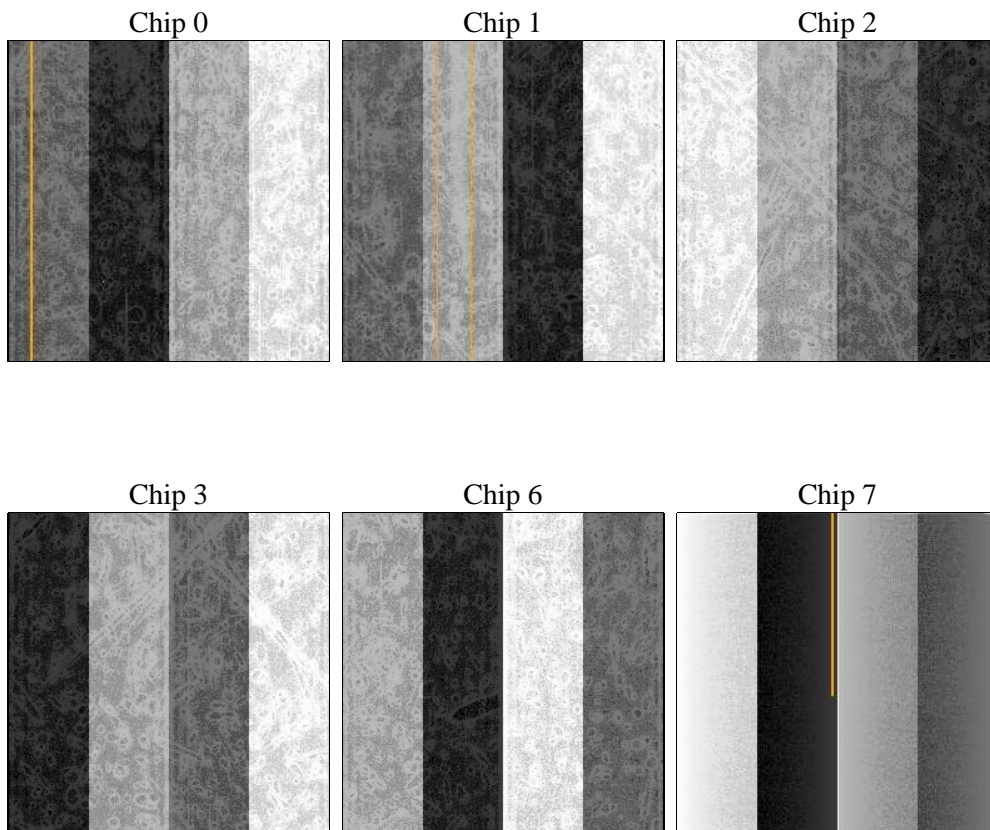
2 OBI

2.1 OBI

2.1.1 Images



2.1.2 Bias



2.1.3 Parameters

obi_num	1	Obi number	sched_exp_time	0.0	[s] Scheduled observation exposure time
ascdsver	8.4.5	Processing system revision	ontime	4083.6791065484	Sum of GTIs [s]
caldsver	4.5.1.1	 	ontime0	1798.7753111124	Sum of GTIs [s]
date	2012-09-05T19:47:05	Date and time of file creation	ontime1	1811.7395208776	Sum of GTIs [s]
revision	4	Processing version of data	ontime2	1708.0261016488	Sum of GTIs [s]
			ontime3	1708.026350826	Sum of GTIs [s]
			ontime6	1883.1731556952	Sum of GTIs [s]
			ontime7	4083.6791065484	Sum of GTIs [s]
			l1events	1098809	Number of level 1 events

2.1.4 Events

	ccd 0	ccd 1	ccd 2	ccd 3	ccd 6	ccd 7		ccd 0	ccd 1	ccd 2	ccd 3	ccd 6	ccd 7
level 1 events	149840	151936	145398	145265	166208	340162	grade 0 events	75326	76383	73289	73241	82401	82282
rejected events	13443	13767	14051	13925	15280	20332		50%	50%	50%	50%	49%	24%
rejected %	8%	9%	9%	9%	9%	5%	grade 1 events	395	425	385	400	391	228
								0%	0%	0%	0%	0%	0%
							grade 2 events	23999	24180	22860	23031	26117	70827
								16%	15%	15%	15%	15%	20%
							grade 3 events	8602	8706	8265	8268	9243	32962
								5%	5%	5%	5%	5%	9%
							grade 4 events	8656	8776	8235	8366	9251	32413
								5%	5%	5%	5%	5%	9%
							grade 5 events	1076	1023	1063	1032	1236	4494
								0%	0%	0%	0%	0%	1%
							grade 6 events	19814	20124	18698	18434	24144	101346
								13%	13%	12%	12%	14%	29%
							grade 7 events	11972	12319	12603	12493	13425	15610
								7%	8%	8%	8%	8%	4%

2.2 Compared Parameters

Parameter	Planned	Actual	Parameter	Planned	Actual
Instrument	ACIS	ACIS	Obspar format version number	7	7
Detector	ACIS-012367	ACIS-012367	Obspar file type	PREDICTED	ACTUAL
Grating	NONE	NONE	Obspar update status	NONE	UPDATED
Data mode	FAINT	FAINT	On-chip summing requested	N	N
Observation mode	SECONDARY	SECONDARY	Subarray requested	NONE	NONE
[deg] Pointing RA	0	330.4491370624879	Alternating exposures requested	N	N
[deg] Pointing Dec	0	-44.37646766814233	[s] Primary exposure time	0.000000	3.2
[deg] Pointing Roll	0.0	314.45882885112			
[mm] SIM focus pos	-0.782348	-1.428180813131781			
[mm] SIM defocus	0	0.1051558262725154			
[mm] SIM translation stage pos	-233.592463	250.466033080201			
[mm] SIM translation stage offset	0	-0.01005468664627074			
[s] Observation start time (MET)	86804386.307	86804385.53878801			
Observation start date	2000-10-01T16:19:46	2000-10-01T16:19:45			
[s] Observation end time (MET)	86851964.759	86851963.990583			
Observation end date	2000-10-02T05:32:45	2000-10-02T05:32:43			
Read mode	TIMED	TIMED			

2.3 Star Slots

2.4 FID Slots

A Summary

A.1 Status

V&V Scientist	Jen Lauer
V&V Date (YYYY-MM-DD)	2012.09.14
V&V Edition	1
V&V Disposition and Status	OK
V&V Charge Time	4.0836791065484

A.2 Comments