

V&V Reference Report

L2 ASCDS Version : 8.5.1.1

Observation 6367 - L2 Version 3
Chandra X-Ray Center

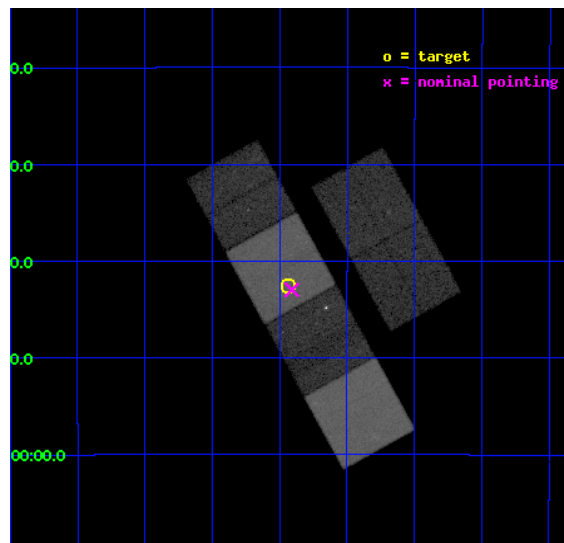
L2 Processing Date : Dec 28 2012

Contents

1	Front	2
2	OBI	3
2.1	OBI	3
2.1.1	Images	3
2.1.2	Bias	3
2.1.3	Parameters	4
2.1.4	Events	4
2.2	Compared Parameters	5
2.3	Aspect	6
2.4	Star Slots	9
2.4.1	Slot 3	9
2.4.2	Slot 4	10
2.4.3	Slot 5	11
2.4.4	Slot 6	12
2.4.5	Slot 7	13
2.5	FID Slots	14
2.5.1	Slot 0	14
2.5.2	Slot 1	15
2.5.3	Slot 2	16
A	Summary	17
A.1	Status	17
A.2	Comments	17

1 Front

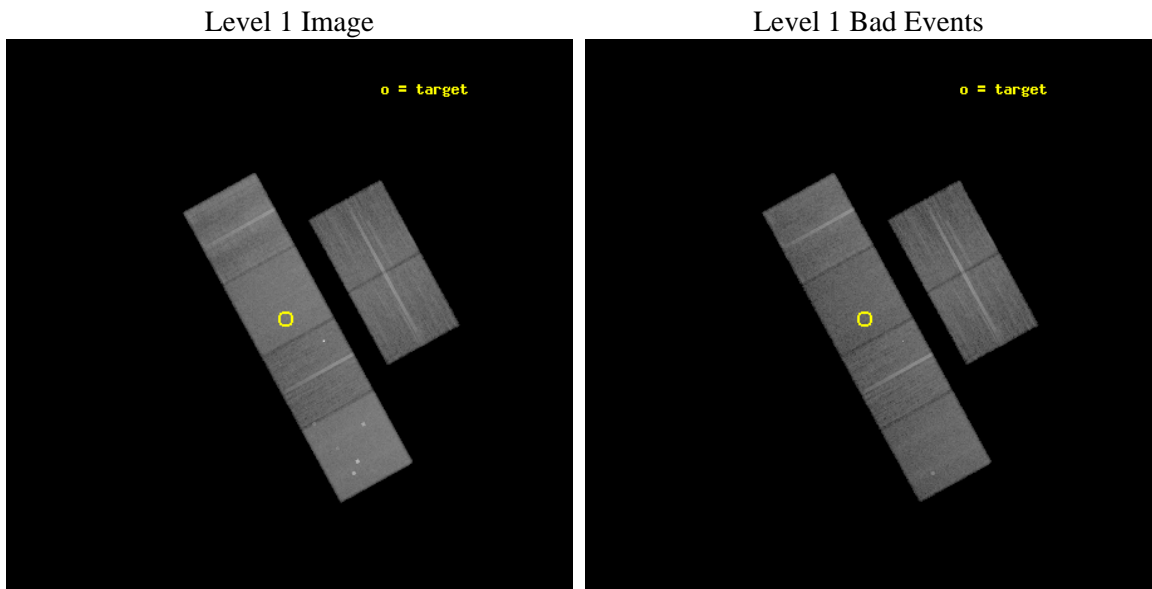
seq_num	701157	Sequence number
obs_id	6367	Observation id
title	The evolution of AGN: Chandra Imaging of protoclusters associated with high redshift radio galaxies	Proposal title
observer	Dr Laura Pentericci	Principal investigator
object	tnj1338-194	Source name
dtcycle	0	
cycle	P	events from which exps? Prim/Second/Both
ra_targ	204.60875	Observer's specified target RA [deg]
dec_targ	-19.708639	Observer's specified target Dec [deg]
ra_nom	204.60228219022	Nominal RA [deg]
dec_nom	-19.716164460209	Nominal Dec [deg]
roll_nom	241.1544362173	Nominal Roll [deg]
revision	3	Processing version of data
ontime	23948.799910784	Sum of GTIs [s]
livetime	23645.545786077	Livetime [s]
ontime2	23948.799910784	Sum of GTIs [s]
ontime3	23948.799910784	Sum of GTIs [s]
ontime5	23948.799910784	Sum of GTIs [s]
ontime6	23948.799910784	Sum of GTIs [s]
ontime7	23948.799910784	Sum of GTIs [s]
ontime8	23948.799910784	Sum of GTIs [s]
l2events	313378	Number of level 2 events



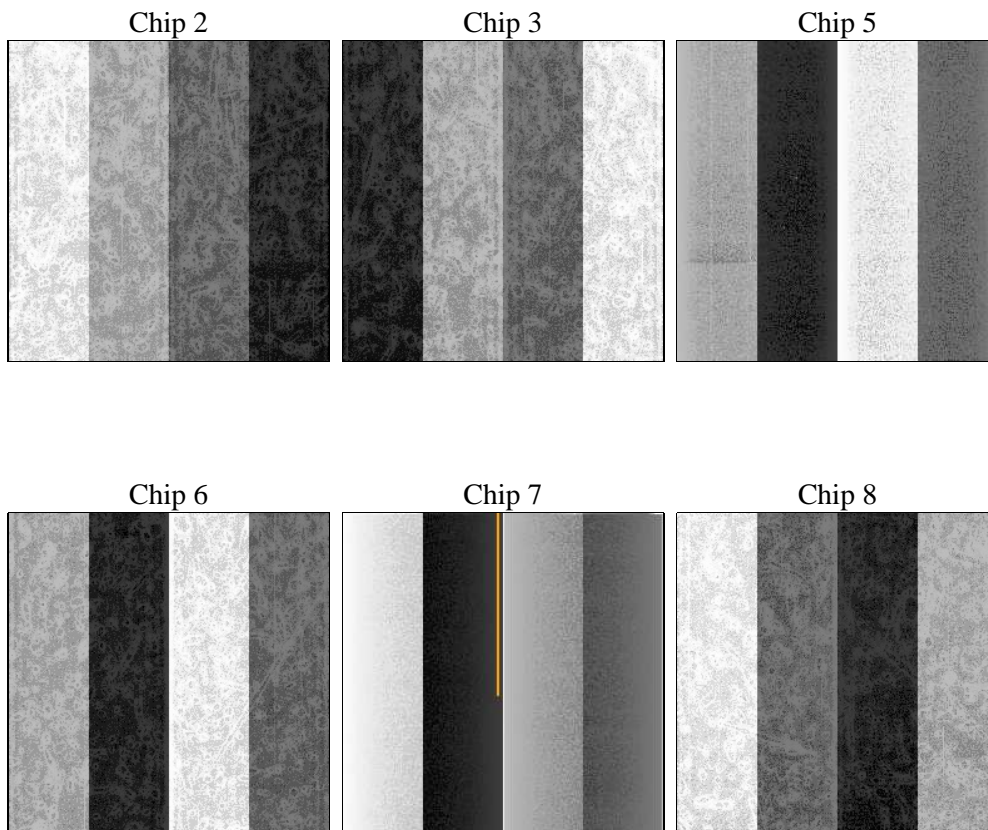
2 OBI

2.1 OBI

2.1.1 Images



2.1.2 Bias



2.1.3 Parameters

obi_num	0	Obi number	sched_exp_time	23765.497000	[s] Scheduled observation exposure time
ascdsver	8.5.1.1	Processing system revision	ontime	23948.799910784	Sum of GTIs [s]
caldbver	4.5.5	 	ontime2	23948.799910784	Sum of GTIs [s]
date	2012-12-28T19:46:26	Date and time of file creation	ontime3	23948.799910784	Sum of GTIs [s]
revision	3	Processing version of data	ontime5	23948.799910784	Sum of GTIs [s]
			ontime6	23948.799910784	Sum of GTIs [s]
			ontime7	23948.799910784	Sum of GTIs [s]
			ontime8	23948.799910784	Sum of GTIs [s]
			l1events	1338797	Number of level 1 events

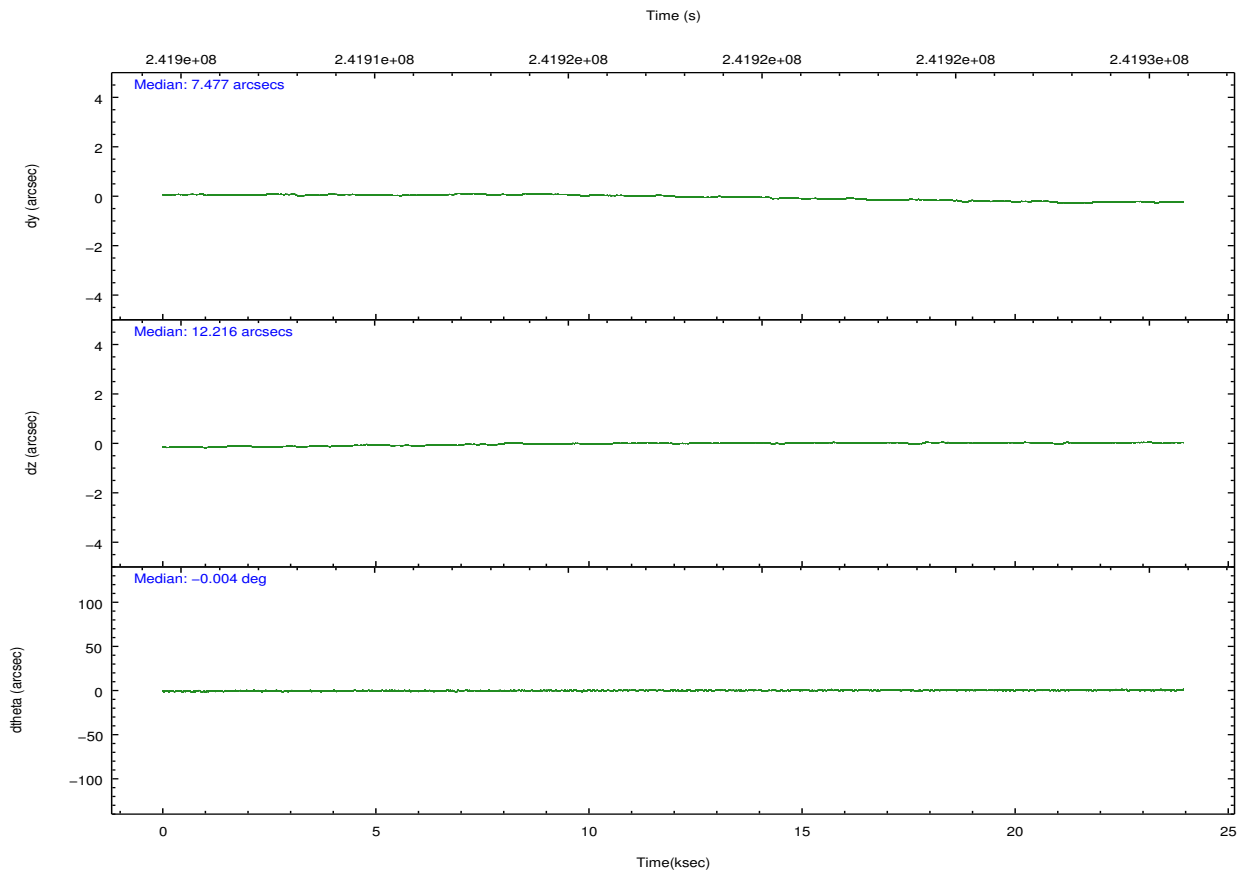
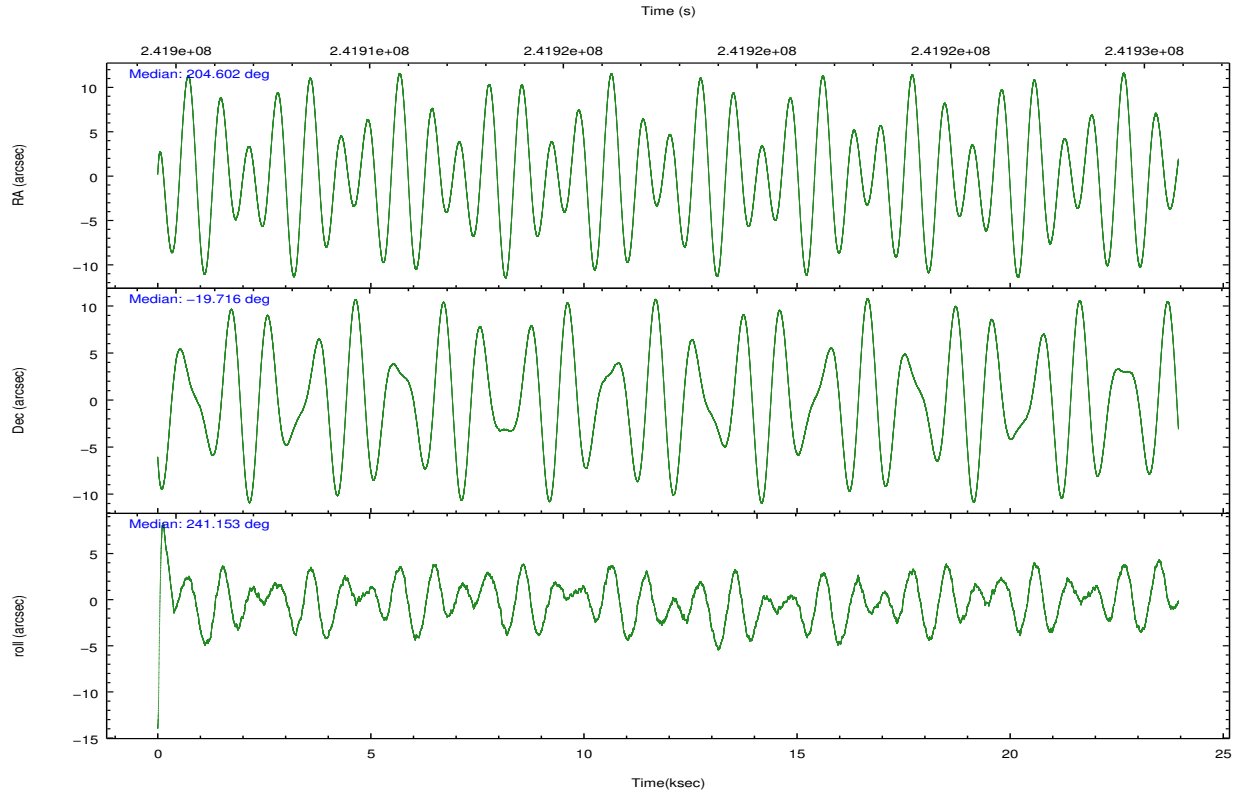
2.1.4 Events

	ccd 2	ccd 3	ccd 5	ccd 6	ccd 7	ccd 8		ccd 2	ccd 3	ccd 5	ccd 6	ccd 7	ccd 8
level 1 events	185765	178452	283451	197328	251744	242057	grade 0 events	10490	9739	16634	17252	9501	20420
rejected events	162873	156338	151220	164518	146288	181793		5%	5%	5%	8%	3%	8%
rejected %	87%	87%	53%	83%	58%	75%	grade 1 events	127	118	408	420	243	203
								0%	0%	0%	0%	0%	0%
							grade 2 events	4811	4513	39370	6162	21377	12086
								2%	2%	13%	3%	8%	4%
							grade 3 events	2036	2089	5181	2414	9224	7495
								1%	1%	1%	1%	3%	3%
							grade 4 events	2092	2126	4887	2400	9040	6910
								1%	1%	1%	1%	3%	2%
							grade 5 events	7284	8087	19992	8531	23446	11246
								3%	4%	7%	4%	9%	4%
							grade 6 events	3725	3901	67627	4881	57486	13816
								2%	2%	23%	2%	22%	5%
							grade 7 events	155200	147879	129352	155268	121427	169881
								83%	82%	45%	78%	48%	70%

2.2 Compared Parameters

Parameter	Planned	Actual	Parameter	Planned	Actual
Instrument	ACIS	ACIS	Obspar format version number	7	7
Detector	ACIS-235678	ACIS-235678	Obspar file type	PREDICTED	ACTUAL
Grating	NONE	NONE	Obspar update status	NONE	UPDATED
Data mode	FAINT	FAINT	Number of optional ACIS chips dropped	0	0
Observation mode	POINTING	POINTING	On-chip summing requested	N	N
[deg] Pointing RA	204.601322	204.6022821902237	Subarray requested	NONE	NONE
[deg] Pointing Dec	-19.688941	-19.71616446020869	Alternating exposures requested	N	N
[deg] Pointing Roll	240.997497	241.1544362173029	[s] Primary exposure time	0.000000	3.2
[mm] SIM focus pos	-0.684267	-0.6828225247311905			
[mm] SIM defocus	0	0.001444936568705701			
[mm] SIM translation stage pos	-190.132523	-190.1425803651734			
[mm] SIM translation stage offset	0	0.01005778216563158			
[s] Observation start time (MET)	241905911.184000	241904706.05416			
Observation start date	2005-08-31T20:04:07	2005-08-31T19:45:06			
[s] Observation end time (MET)	241929677.184000	241929901.06781			
Observation end date	2005-09-01T02:40:13	2005-09-01T02:45:01			
Read mode	TIMED	TIMED			

2.3 Aspect

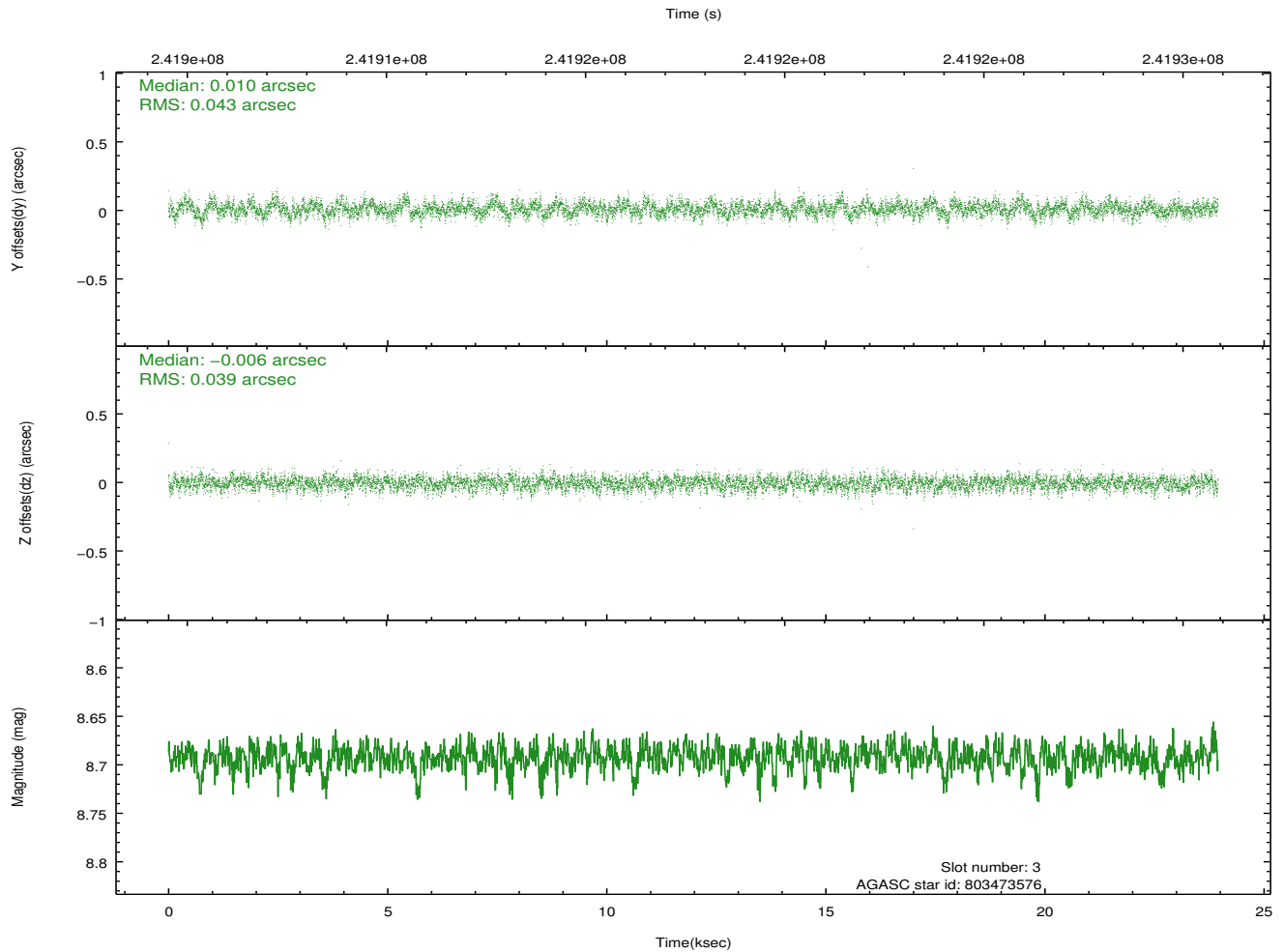
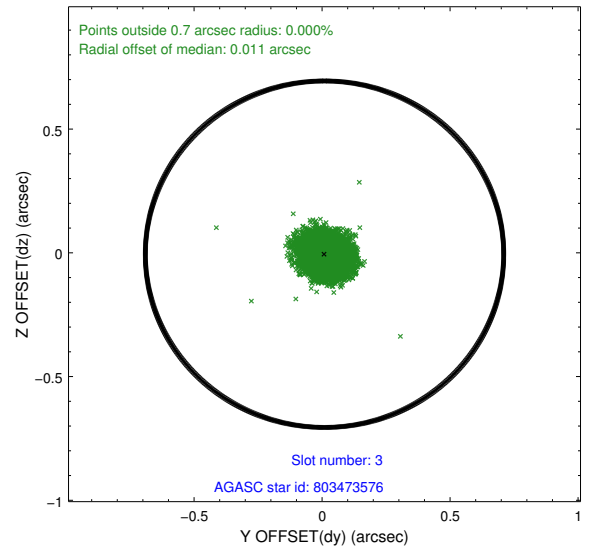
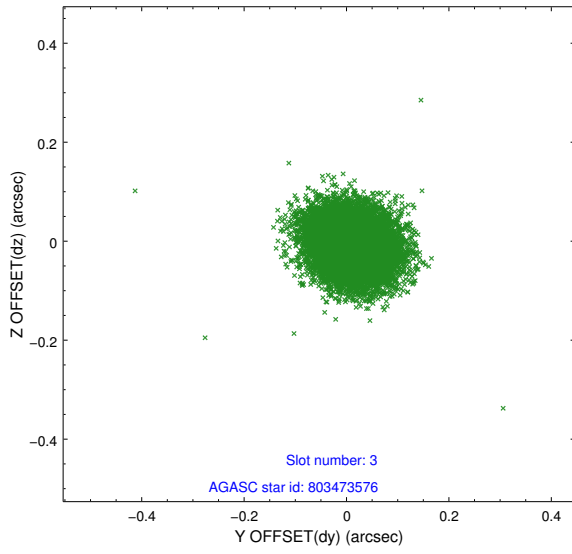


Slot Statistics

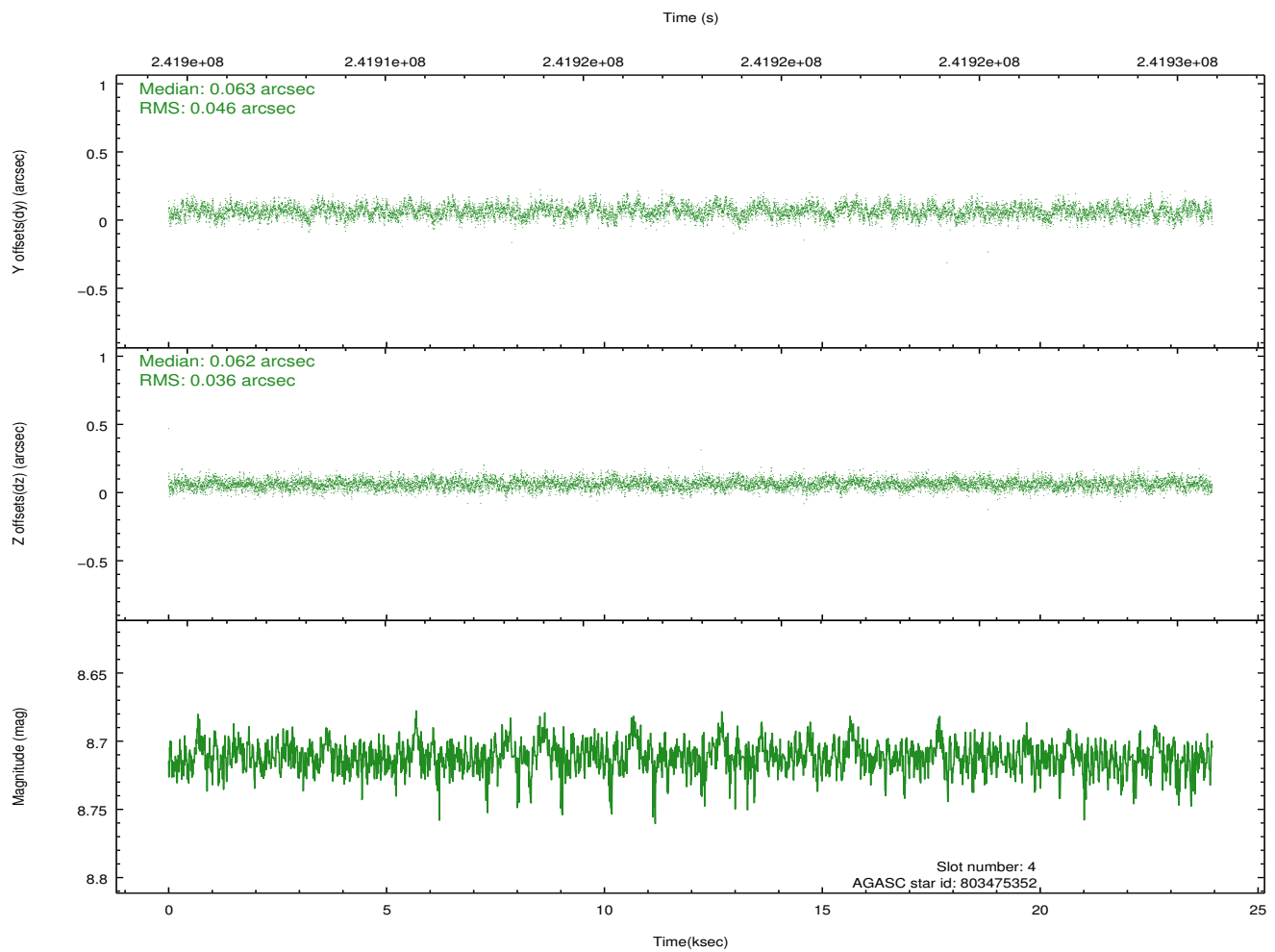
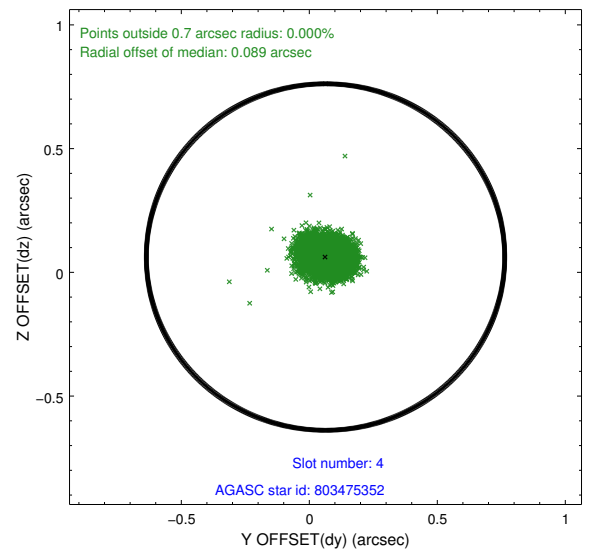
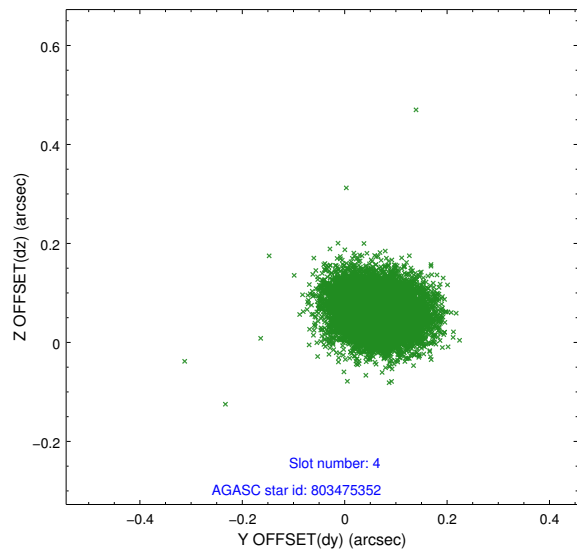
slot	status	id	mag	n_pts	med_dy	med_dz	dr1	dr2	ra	dec	mean_y	mean_z
0	FID	ACIS-S-2	7.10	5842	-0.021	-0.034	0.007	0.011	0.000000	0.000000	-760.21	-1733.47
1	FID	ACIS-S-4	7.20	5840	0.078	0.019	0.006	0.012	0.000000	0.000000	2153.10	174.92
2	FID	ACIS-S-5	7.23	5842	-0.088	0.023	0.008	0.014	0.000000	0.000000	-1812.95	168.75
3	GUIDE	803473576	8.69	11680	0.010	-0.006	0.062	0.100	204.786653	-19.629287	-491.82	445.63
4	GUIDE	803475352	8.71	11681	0.063	0.062	0.061	0.101	204.581068	-20.424462	2349.23	1224.43
5	GUIDE	803478152	9.27	11676	0.051	-0.022	0.098	0.152	204.365662	-19.814132	782.16	-479.02
6	GUIDE	803479488	8.80	11680	-0.136	-0.057	0.078	0.122	204.540045	-19.188743	-1473.53	-1055.36
7	GUIDE	803476576	8.70	11682	0.012	0.022	0.065	0.103	204.800868	-19.708520	-265.74	625.71

2.4 Star Slots

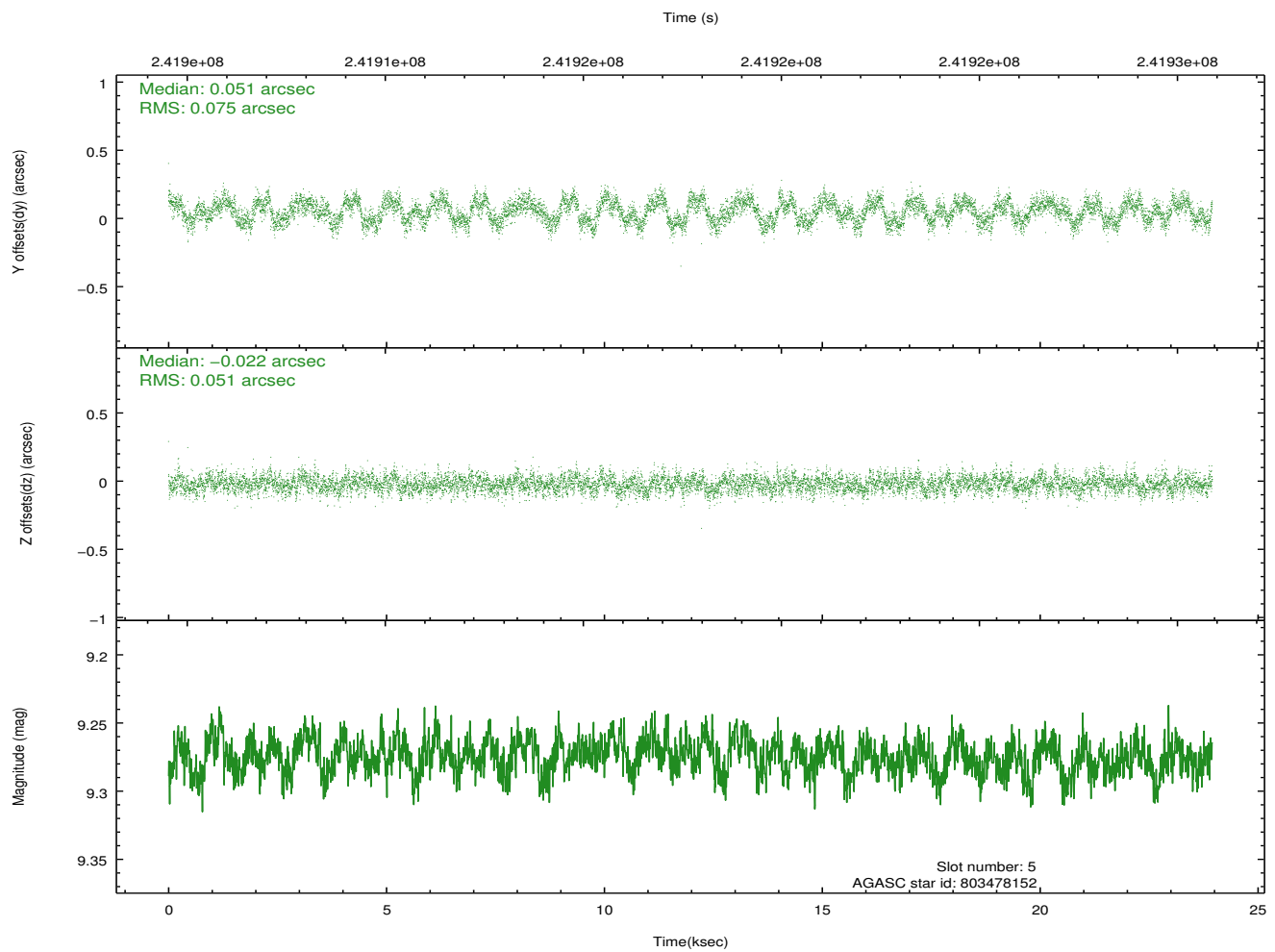
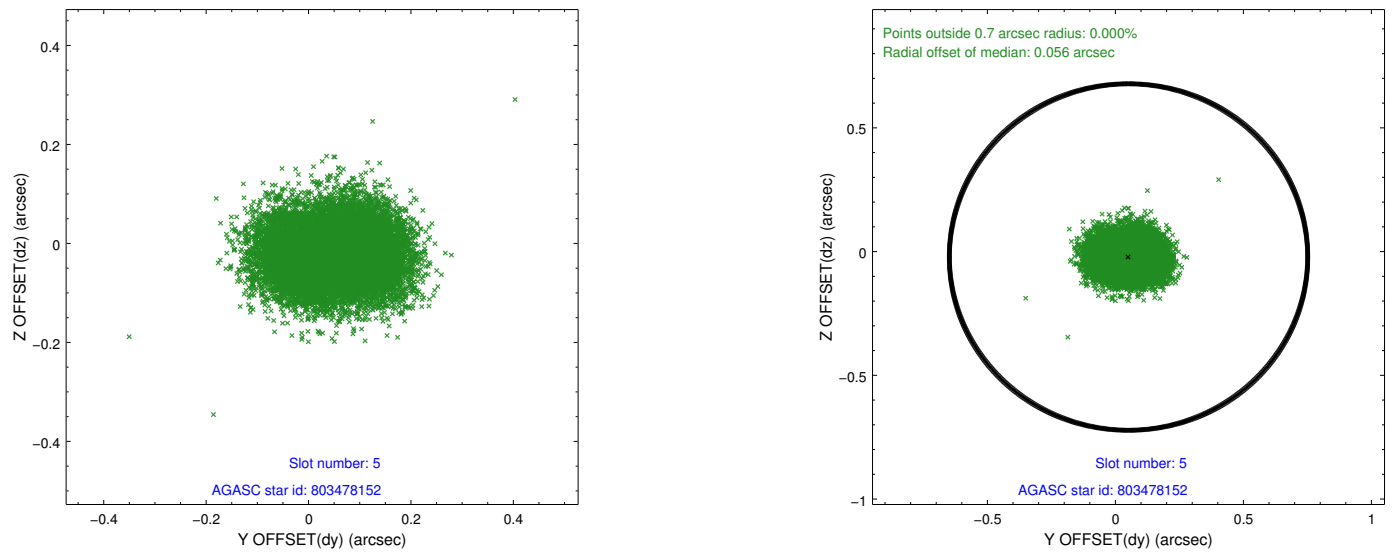
2.4.1 Slot 3



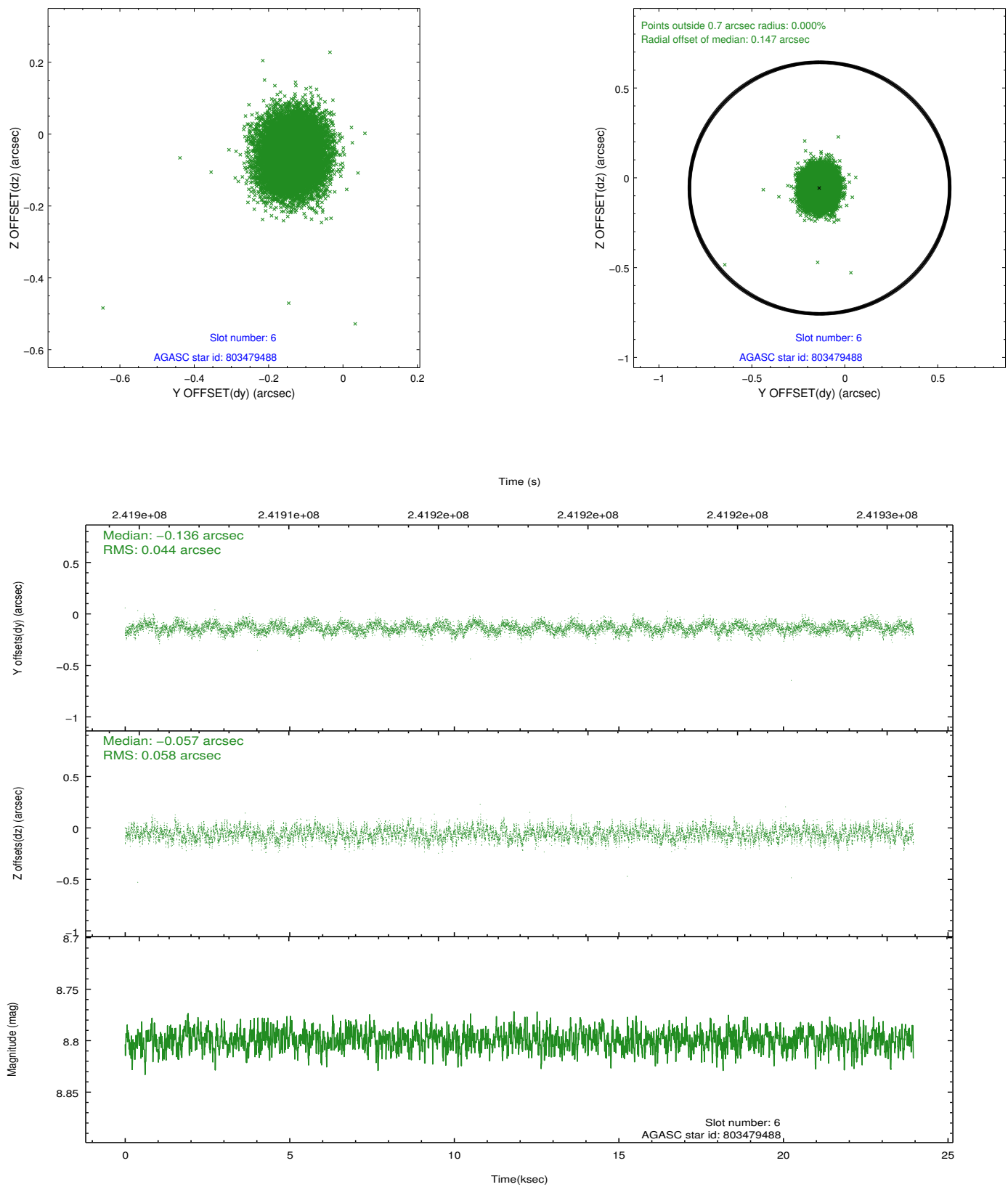
2.4.2 Slot 4



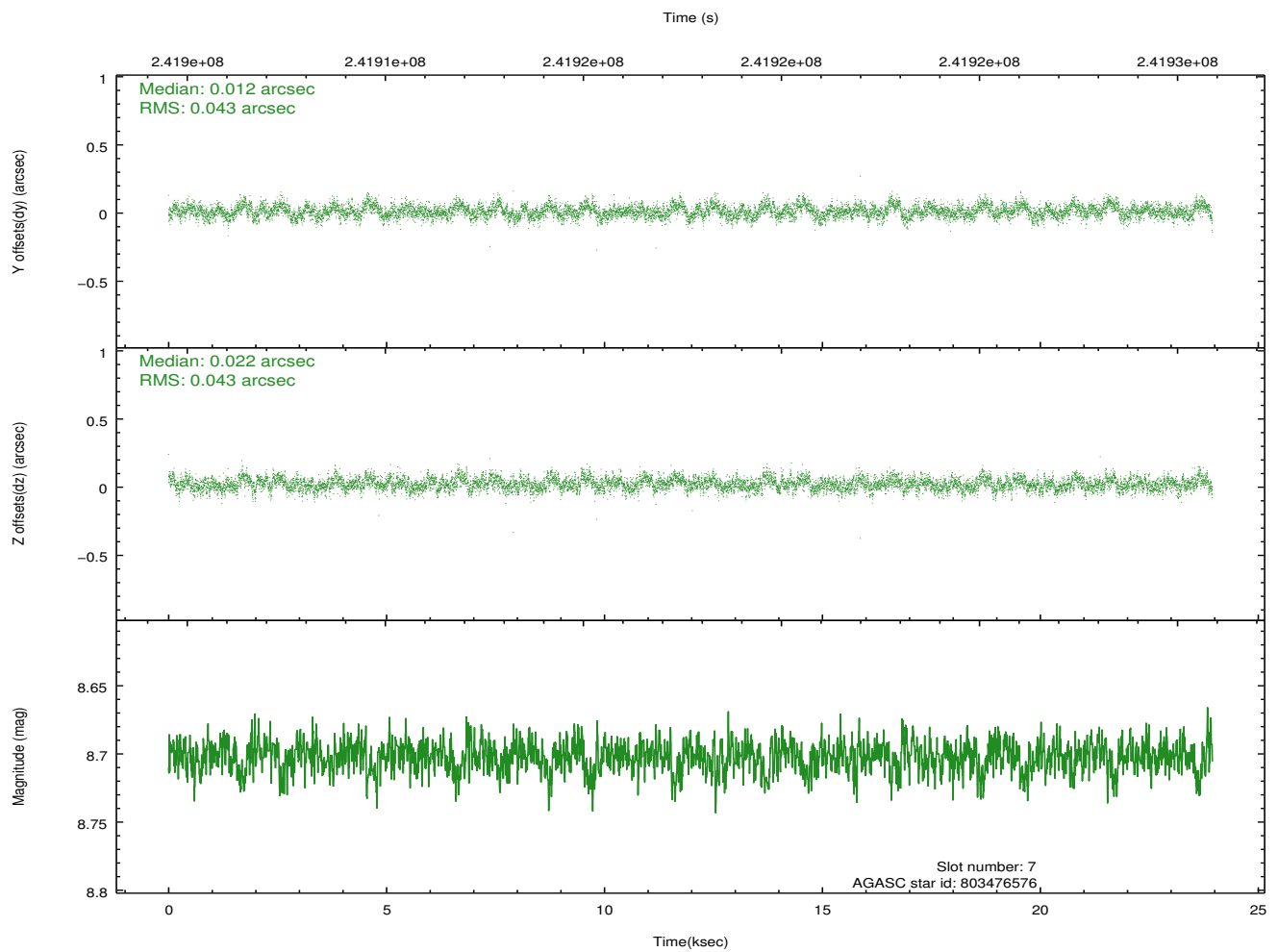
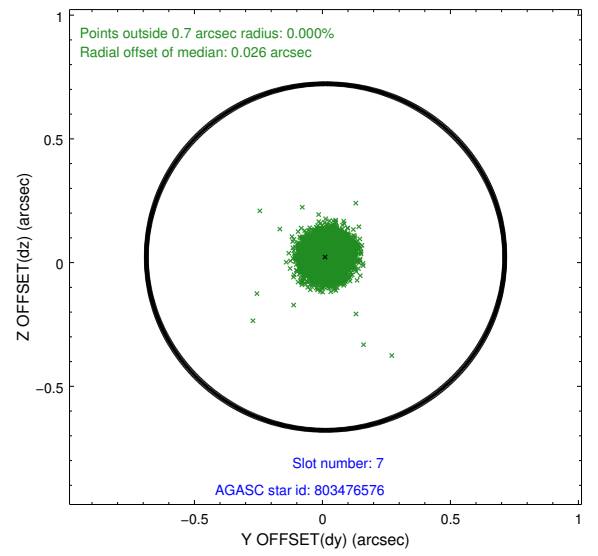
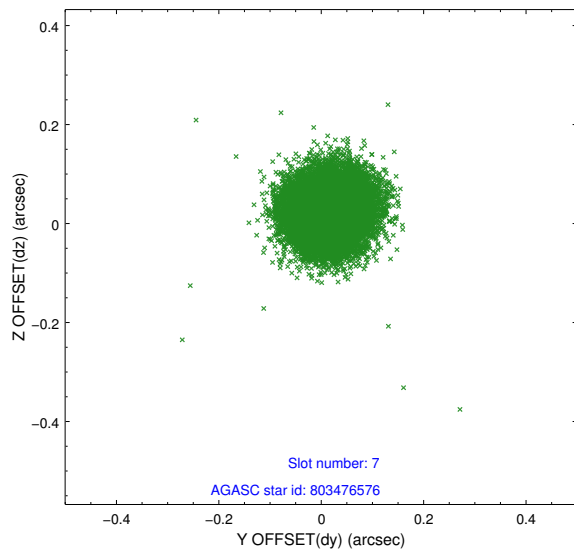
2.4.3 Slot 5



2.4.4 Slot 6

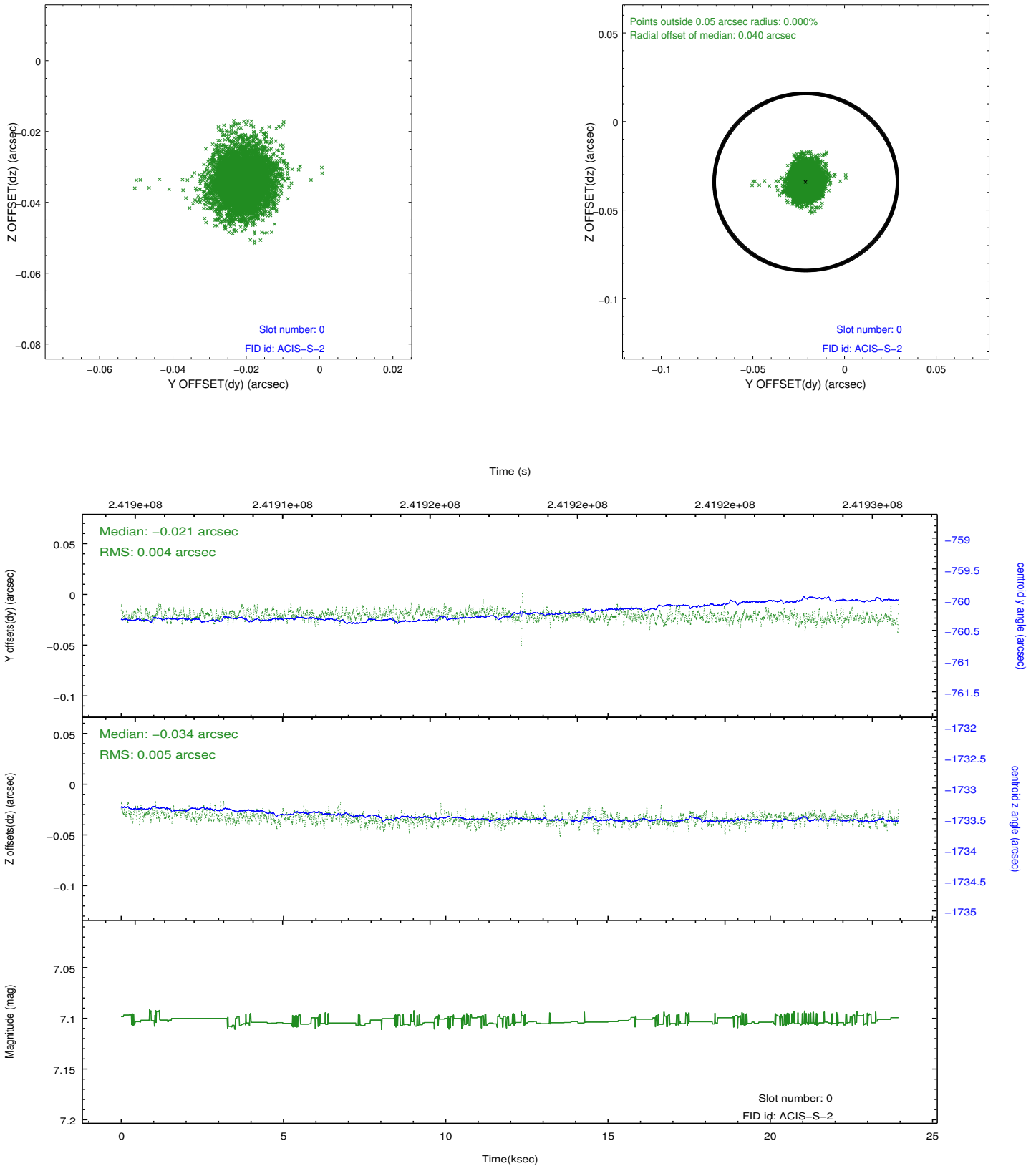


2.4.5 Slot 7

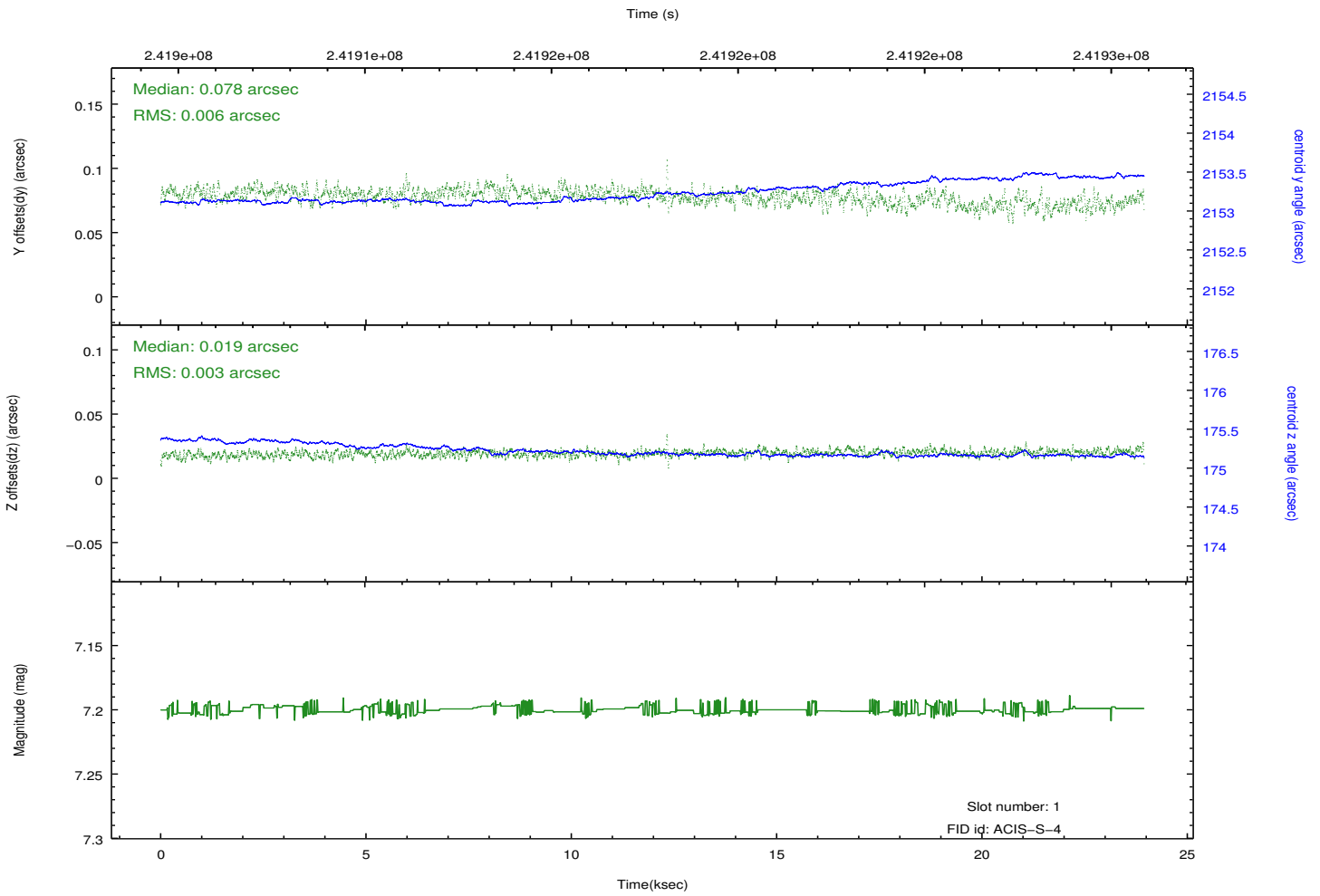
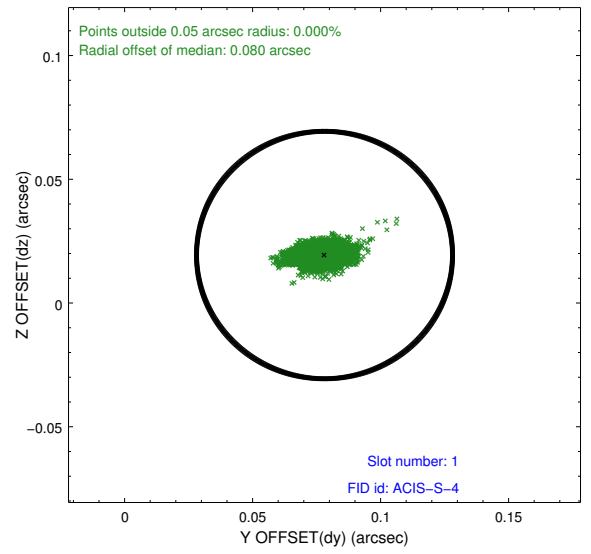
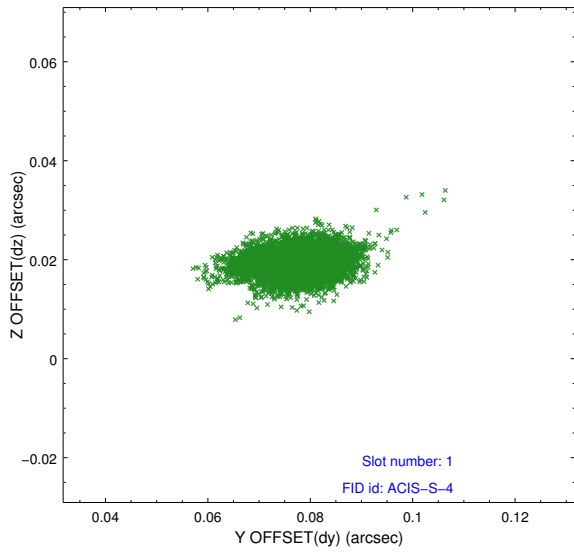


2.5 FID Slots

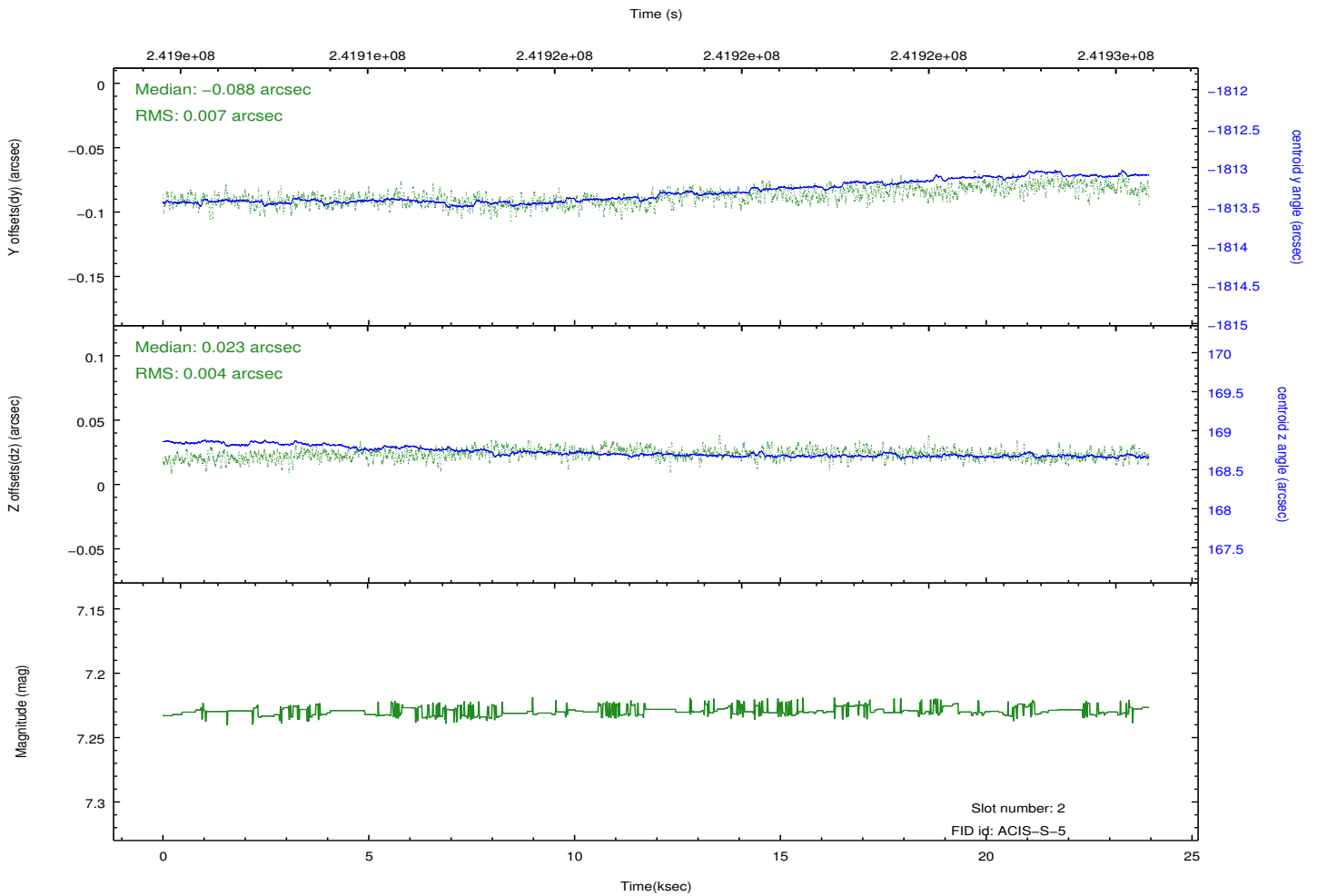
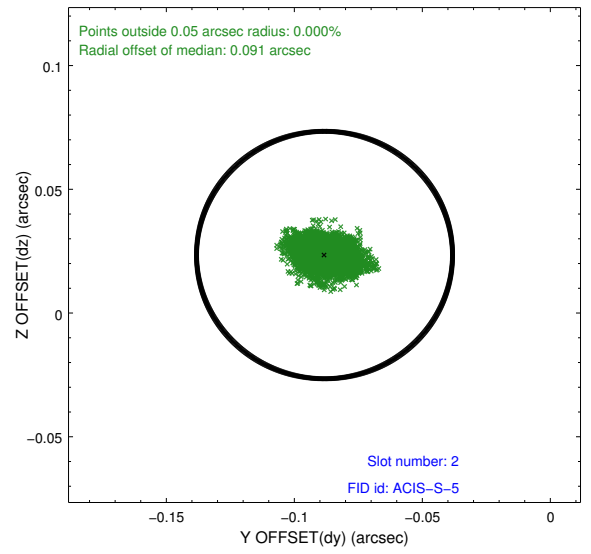
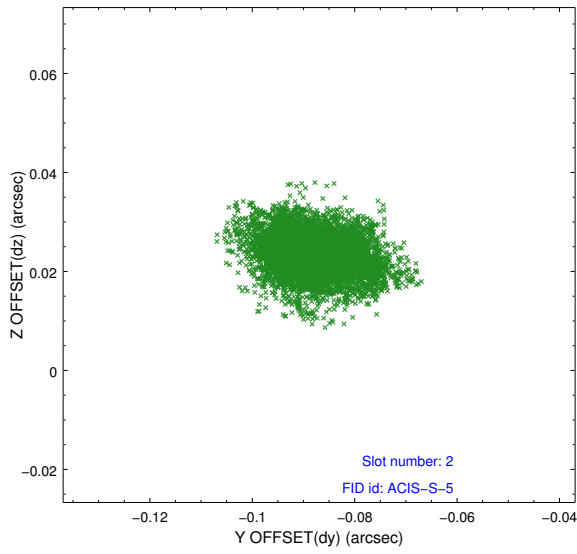
2.5.1 Slot 0



2.5.2 Slot 1



2.5.3 Slot 2



A Summary

A.1 Status

V&V Scientist	Beth Sundheim
V&V Date (YYYY-MM-DD)	2013.01.25
V&V Edition	1
V&V Disposition and Status	OK
V&V Charge Time	23.94879

A.2 Comments