

V&V Reference Report

L2 ASCDS Version : 8.4.3

Observation 6427 - L2 Version 3
Chandra X-Ray Center

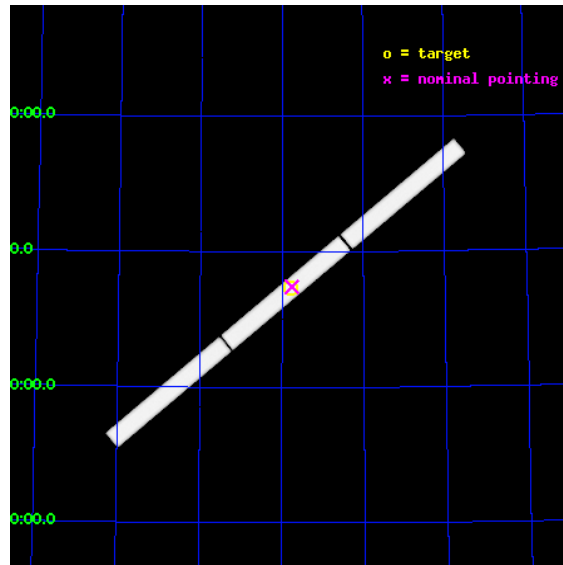
L2 Processing Date : Aug 11 2012

Contents

1	Front	2
2	OBI	3
2.1	OBI	3
2.1.1	Images	3
2.1.2	Parameters	4
2.1.3	Events	4
2.2	Compared Parameters	5
2.3	Aspect	6
2.4	Star Slots	9
2.4.1	Slot 3	9
2.4.2	Slot 4	10
2.4.3	Slot 5	11
2.4.4	Slot 6	12
2.4.5	Slot 7	13
2.5	FID Slots	14
2.5.1	Slot 0	14
2.5.2	Slot 1	15
2.5.3	Slot 2	16
3	Gratings	17
3.1	LETG Arm	17
A	Summary	19
A.1	Status	19
A.2	Comments	19

1 Front

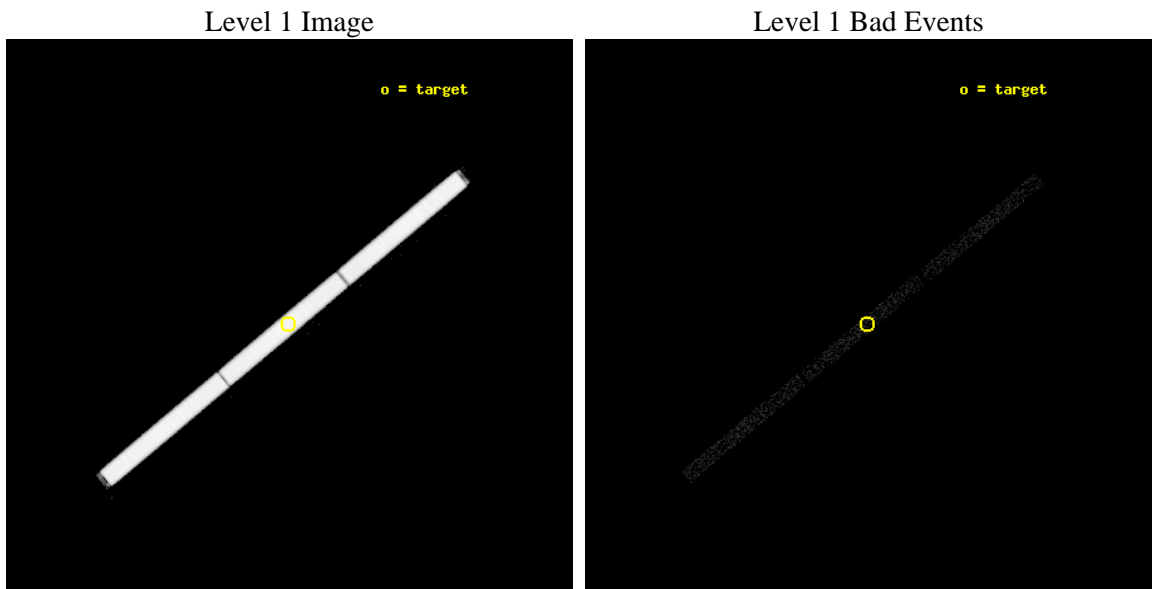
seq_num	200401	Sequence number
obs_id	6427	Observation id
title	What is the origin of H-deficient post-AGB stars?	Proposal title
observer	Prof. Klaus Werner	Principal investigator
object	PG1520+525	Source name
ra_targ	230.445	Observer's specified target RA [deg]
dec_targ	52.367917	Observer's specified target Dec [deg]
ra_nom	230.43922477725	Nominal RA [deg]
dec_nom	52.371005702627	Nominal Dec [deg]
roll_nom	140.07191148217	Nominal Roll [deg]
revision	3	Processing version of data
ontime	47882.877229452	[s]
livetime	47472.747922356	Ontime multiplied by DTCOR
l2events	3358424	Number of level 2 events



2 OBI

2.1 OBI

2.1.1 Images



2.1.2 Parameters

obi_num	0	Obi number	sched_exp_time	47700.000000	[s] Scheduled observation exposure time
ascdsver	8.4.5	Processing system revision	ontime	47882.877229452	[s]
caldbver	4.5.1.1	 	l1events	4566391	Number of level 1 events
date	2012-08-11T06:35:38	Date and time of file creation			
revision	3	Processing version of data			

2.1.3 Events

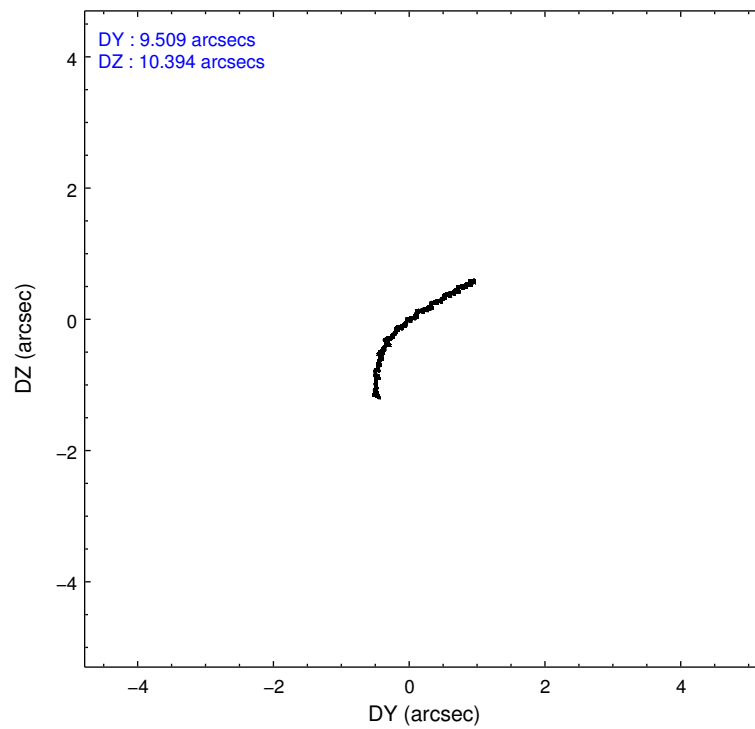
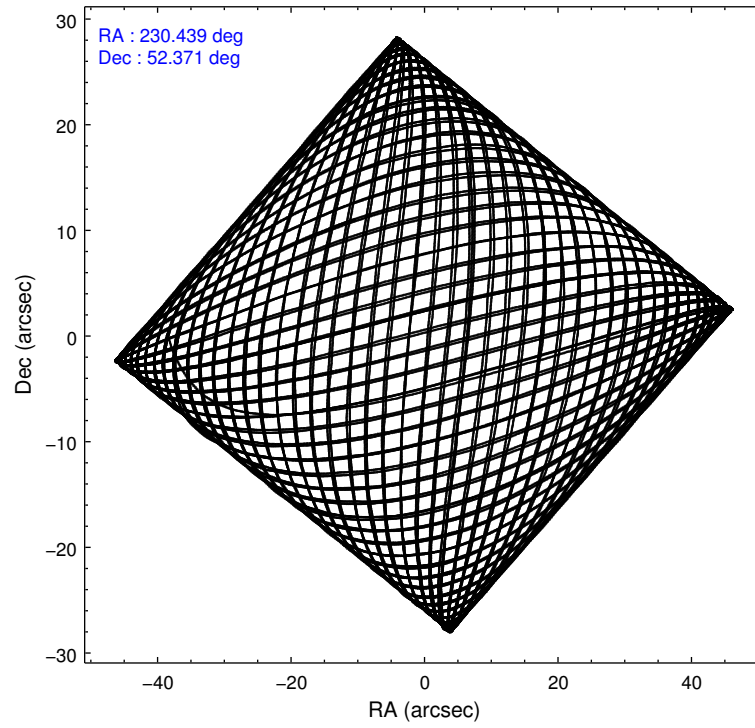
Level 1 Events

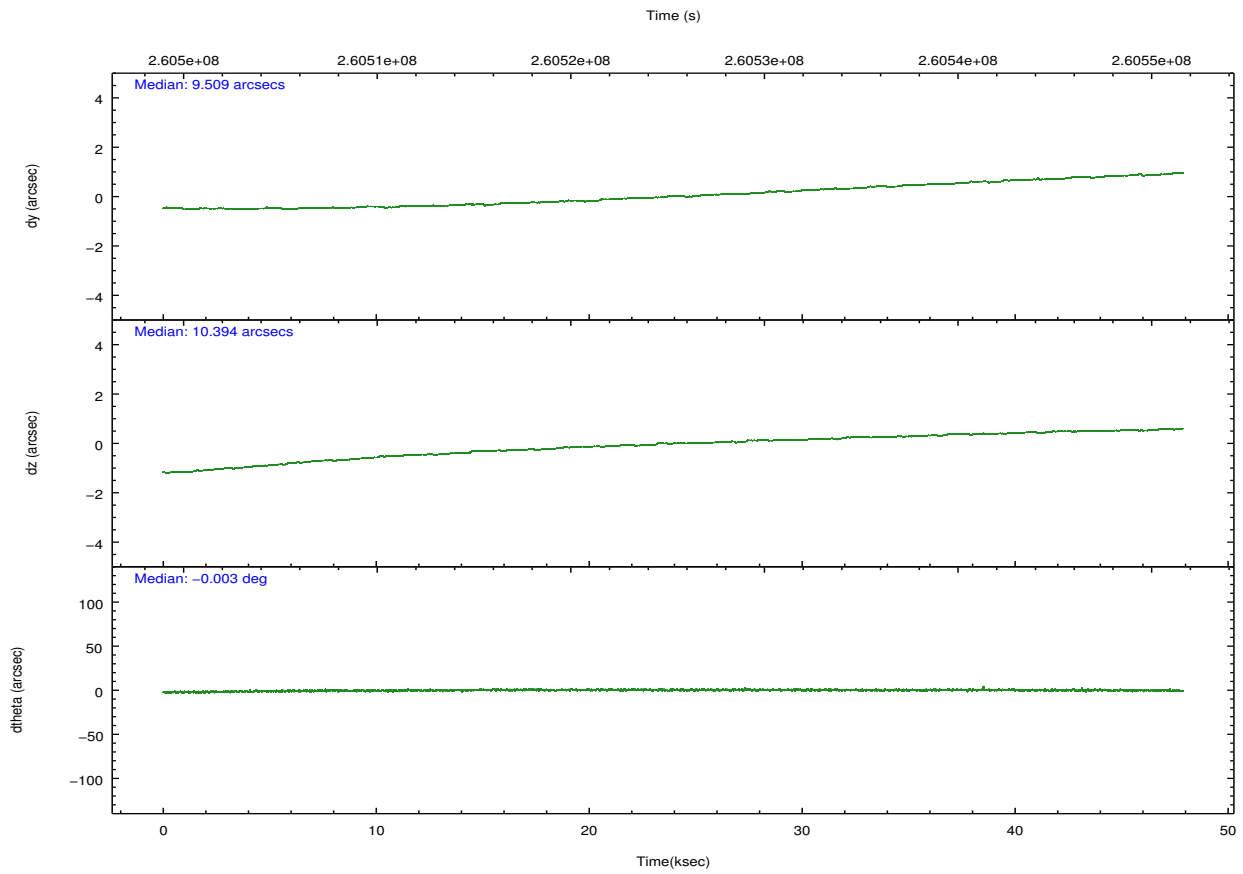
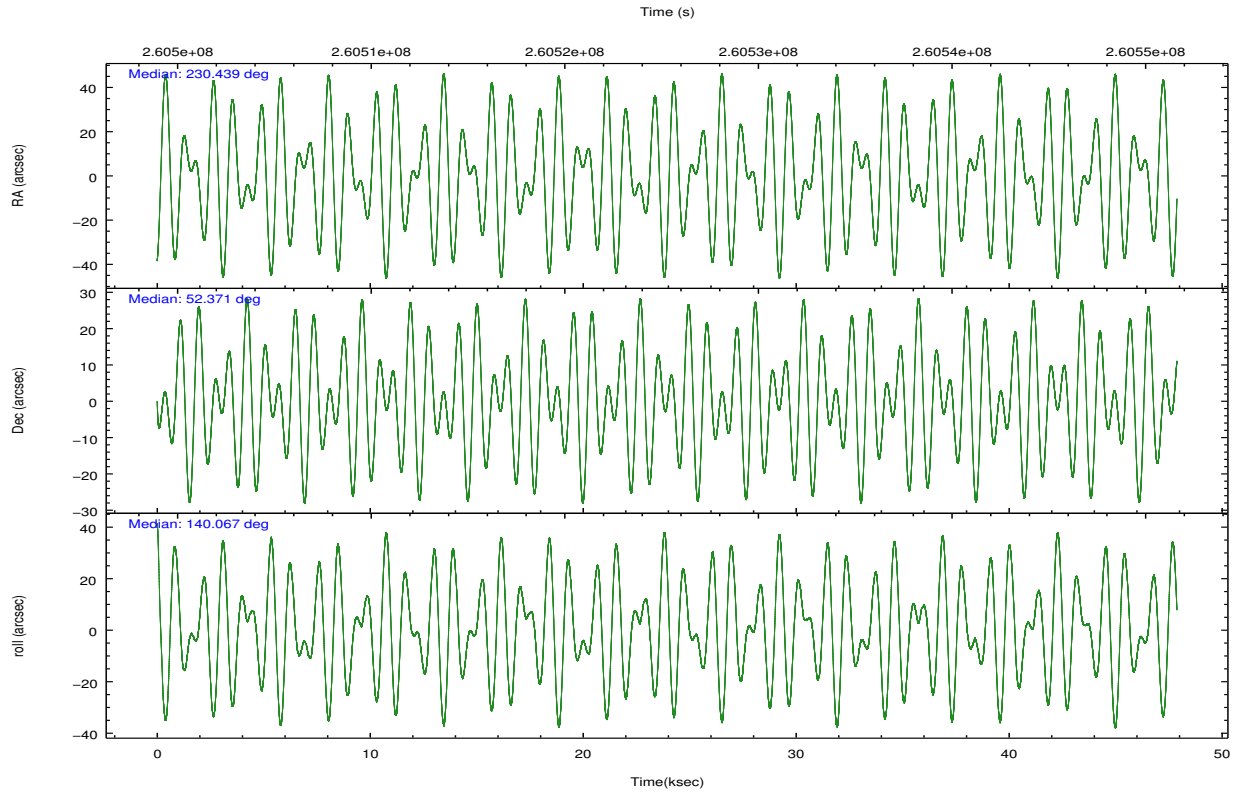
	segment 1	segment 2	segment 3
level 1 events	1530398	1501346	1534647
rejected events	21973	21302	21911
rejected %	1%	1%	1%

2.2 Compared Parameters

Parameter	Planned	Actual	Parameter	Planned	Actual
Instrument	HRC	HRC	Obspar format version number	7	7
Detector	HRC-S	HRC-S	Obspar file type	PREDICTED	ACTUAL
Grating	LETG	LETG	Obspar update status	NONE	UPDATED
Data mode	OBSERVING	OBSERVING			
Observation mode	POINTING	POINTING			
[deg] Pointing RA	230.485740	230.4392247772526			
[deg] Pointing Dec	52.367484	52.37100570262687			
[deg] Pointing Roll	139.967733	140.0719114821736			
[mm] SIM focus pos	-1.429586	-1.428180813131781			
[mm] SIM defocus	0.1037507710433287	0.1051558262725154			
[mm] SIM translation stage pos	250.455976	250.466033080201			
[mm] SIM translation stage offset	0	-0.01005468664627074			
[s] Observation start time (MET)	260501521.184000	260500697.66433			
Observation start date	2006-04-04T01:30:56	2006-04-04T01:18:17			
[s] Observation end time (MET)	260549221.184000	260550550.59166			
Observation end date	2006-04-04T14:45:56	2006-04-04T15:09:10			

2.3 Aspect



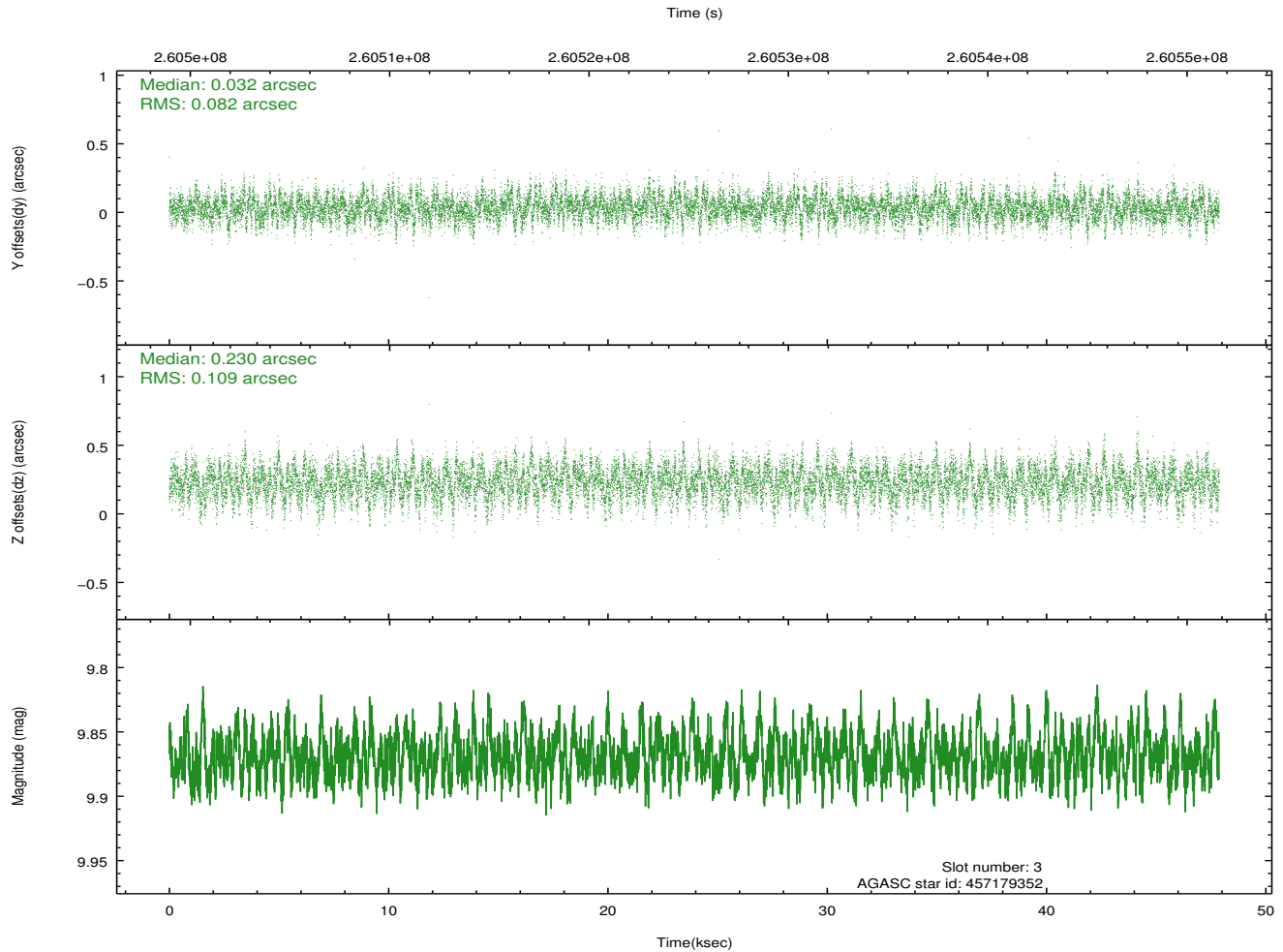
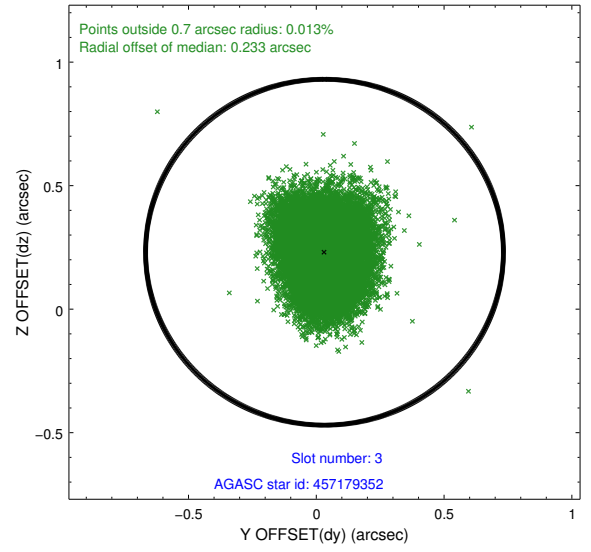
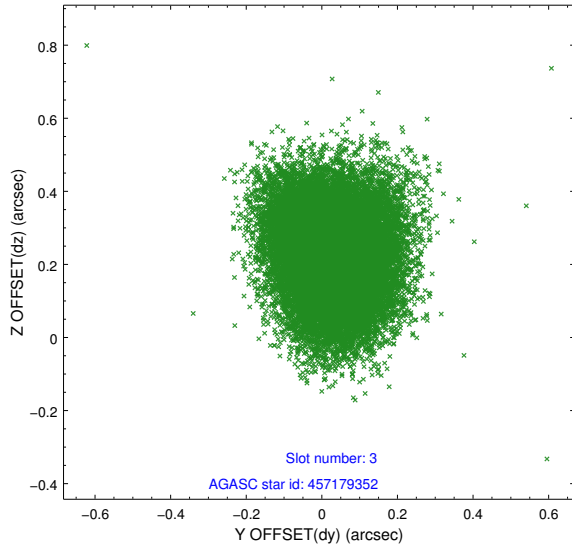


Slot Statistics

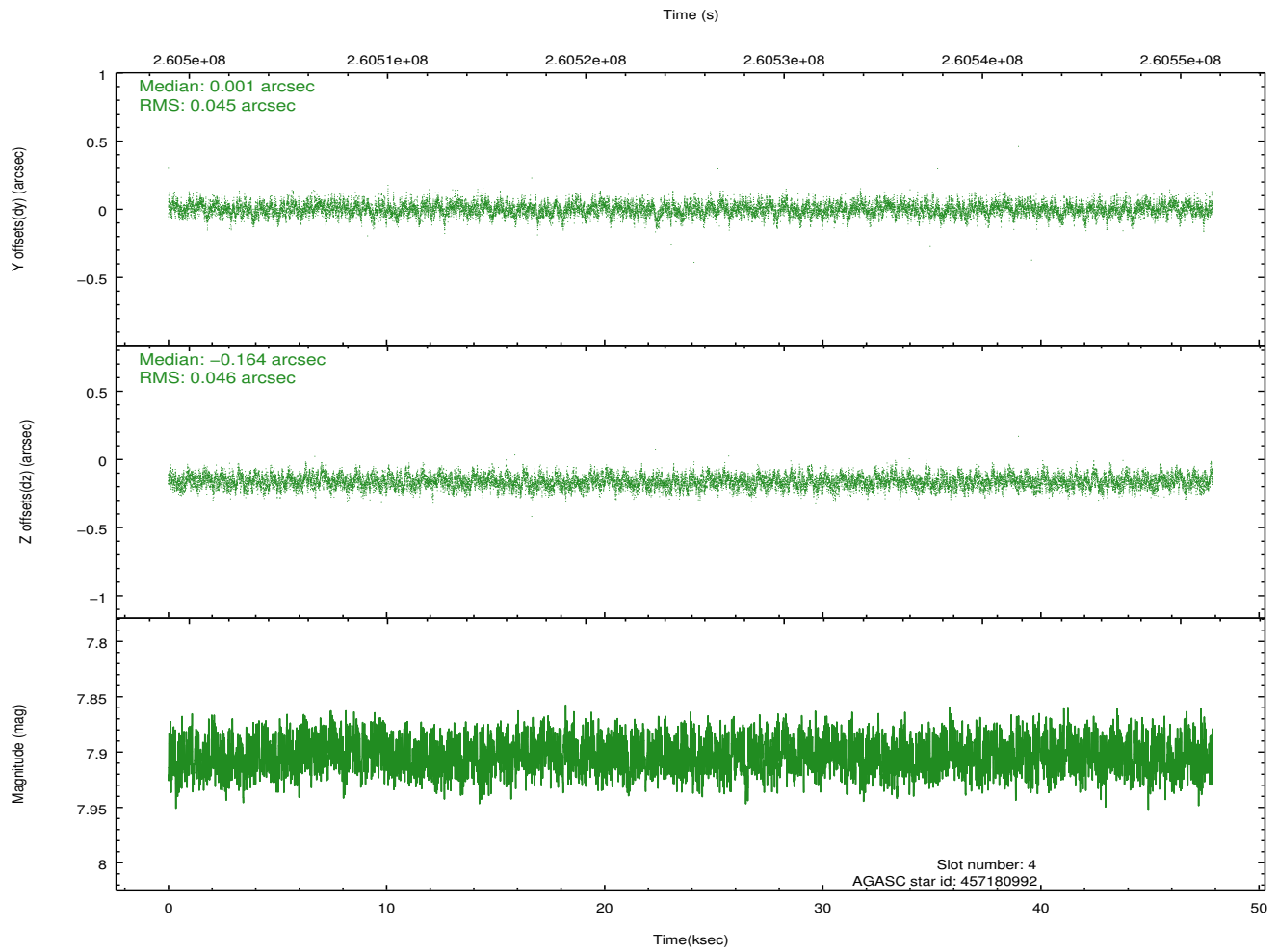
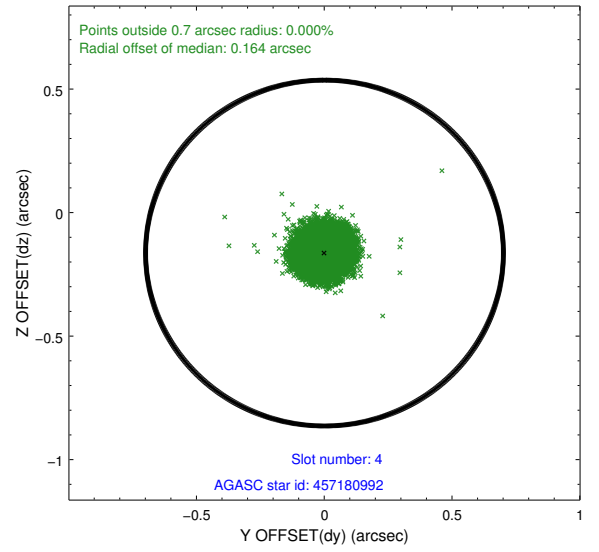
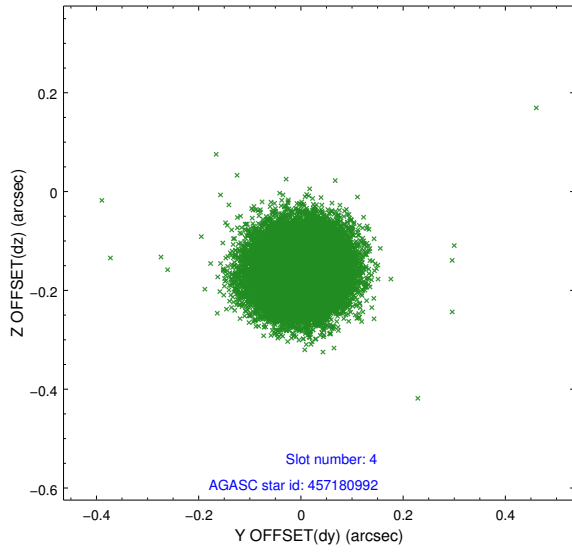
slot	status	id	mag	n_pts	med_dy	med_dz	dr1	dr2	ra	dec	mean_y	mean_z
0	FID	HRC-S-1	7.03	11677	0.138	-0.197	0.015	0.037	0.000000	0.000000	-1163.80	-459.01
1	FID	HRC-S-2	7.02	11679	0.147	-0.110	0.014	0.028	0.000000	0.000000	1235.80	-451.63
2	FID	HRC-S-3	7.04	11679	0.107	0.004	0.012	0.023	0.000000	0.000000	-1166.43	570.67
3	GUIDE	457179352	9.87	23325	0.032	0.230	0.144	0.238	231.588393	52.490307	-1553.89	-1906.97
4	GUIDE	457180992	7.90	23354	0.001	-0.164	0.069	0.109	230.362137	52.344454	155.41	238.28
5	GUIDE	457181616	8.82	23350	-0.041	-0.048	0.080	0.130	229.954323	52.287535	713.97	969.41
6	GUIDE	457182176	8.44	23354	0.008	-0.130	0.072	0.114	230.710636	52.153119	-875.80	270.70
7	GUIDE	506994248	8.29	23354	0.002	0.110	0.075	0.122	230.374449	53.063992	1797.77	-1764.72

2.4 Star Slots

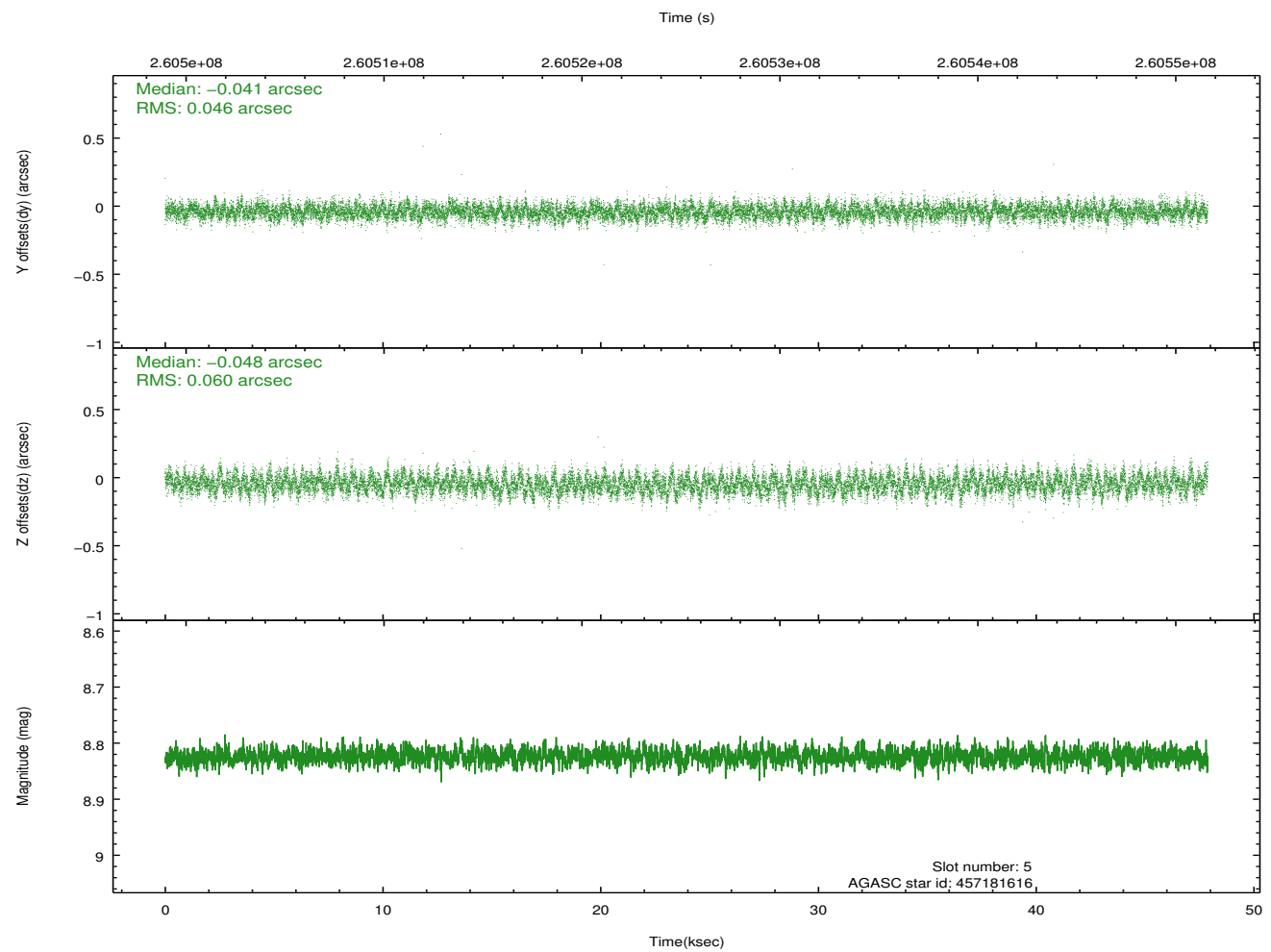
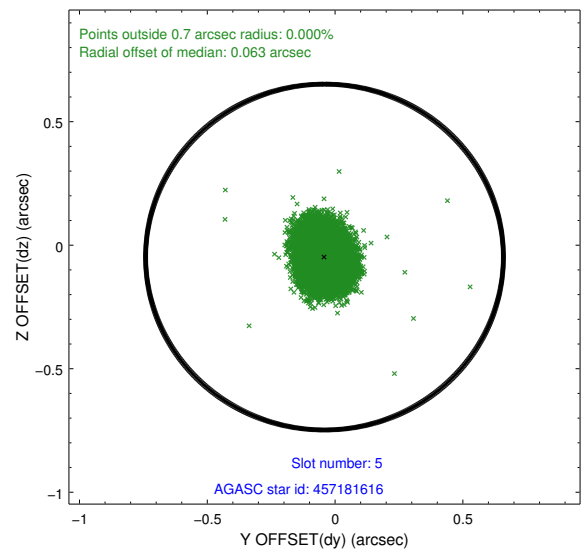
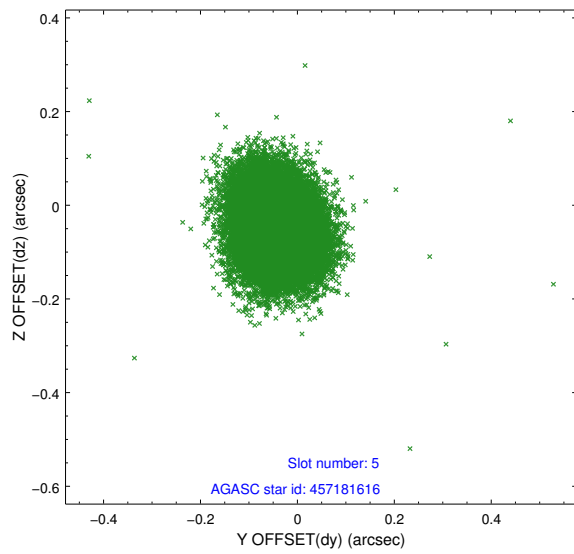
2.4.1 Slot 3



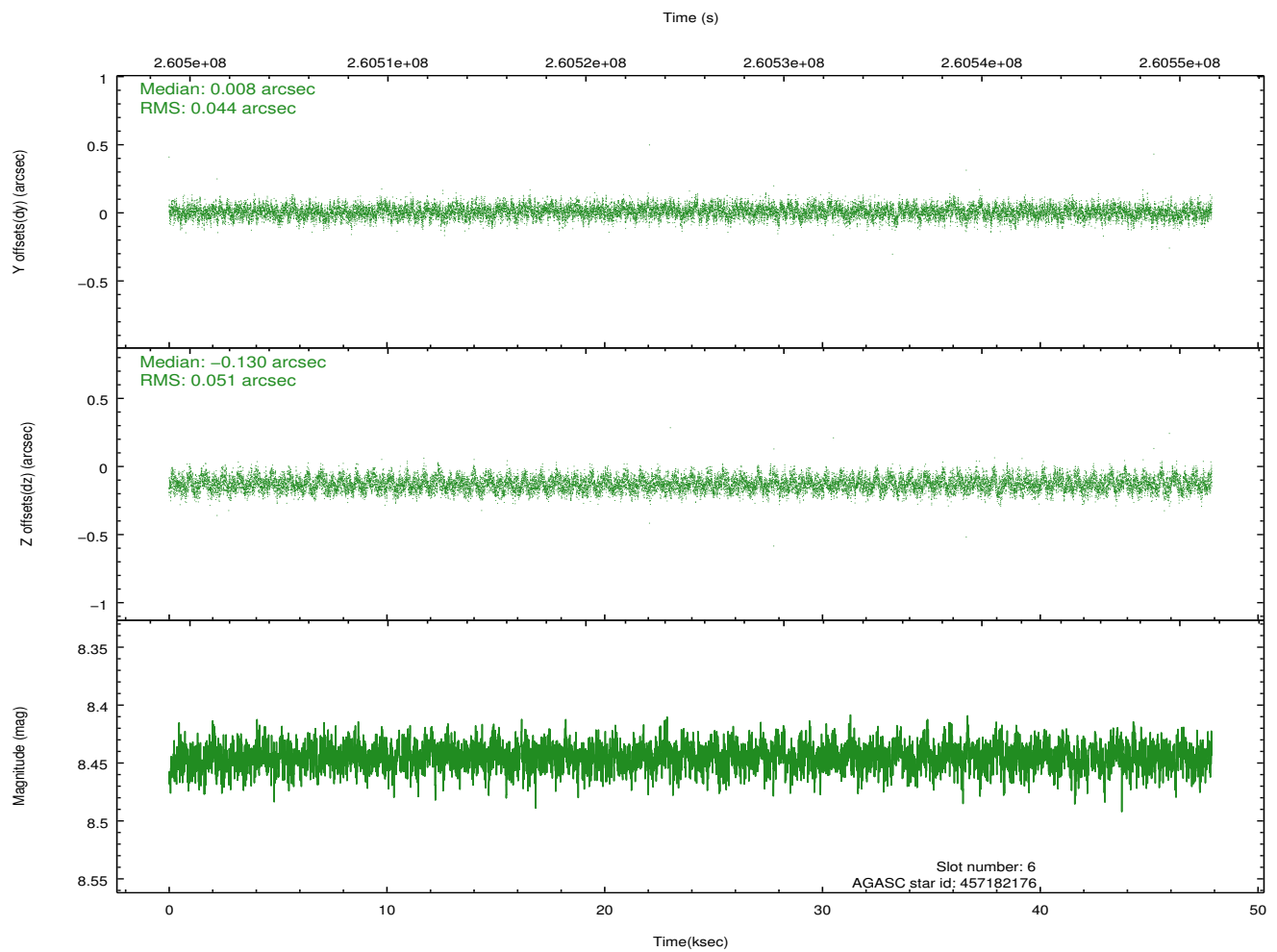
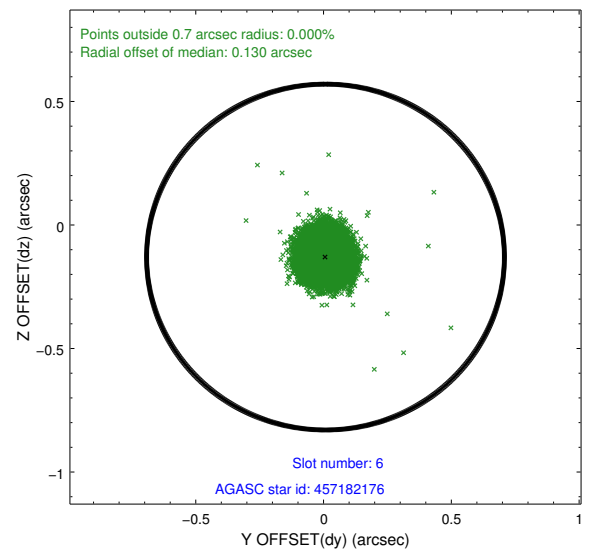
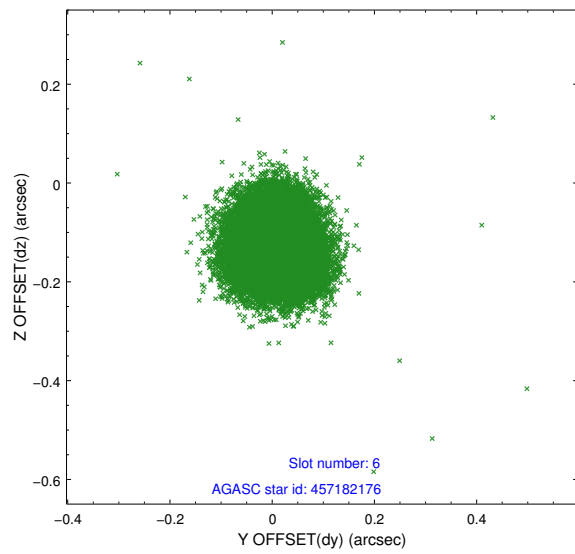
2.4.2 Slot 4



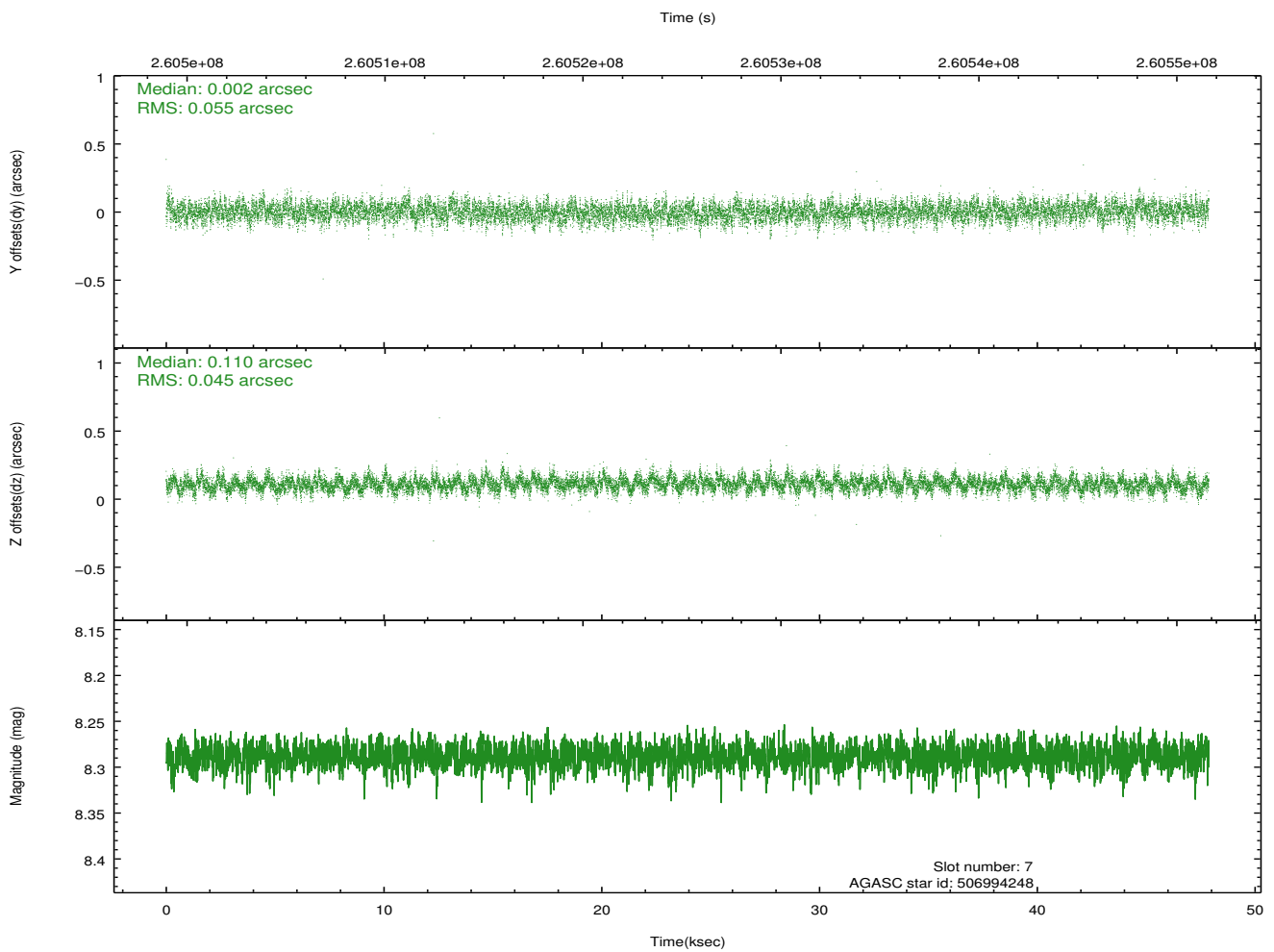
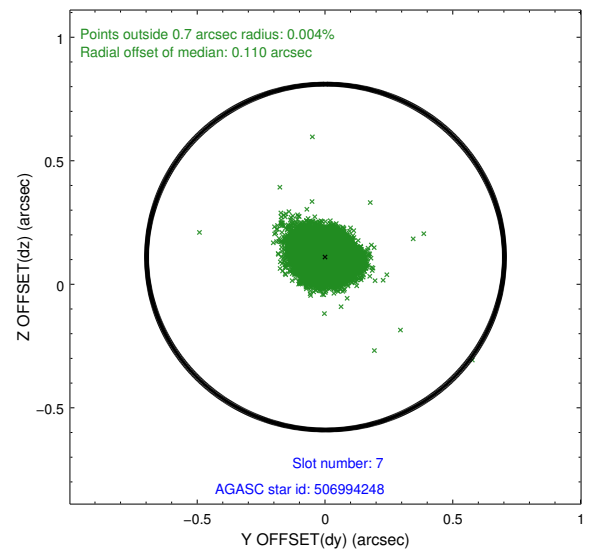
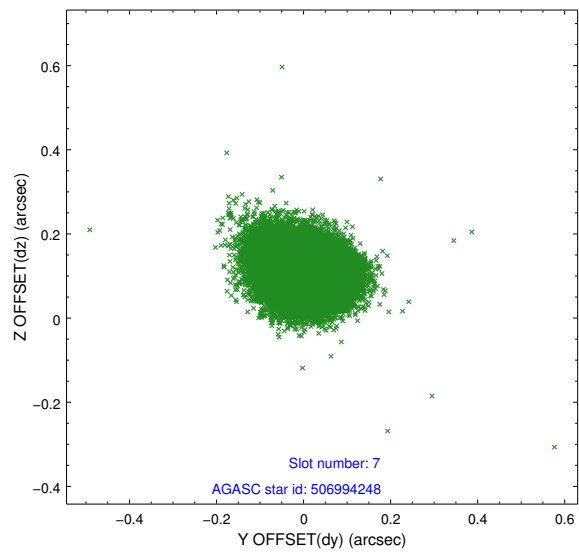
2.4.3 Slot 5



2.4.4 Slot 6

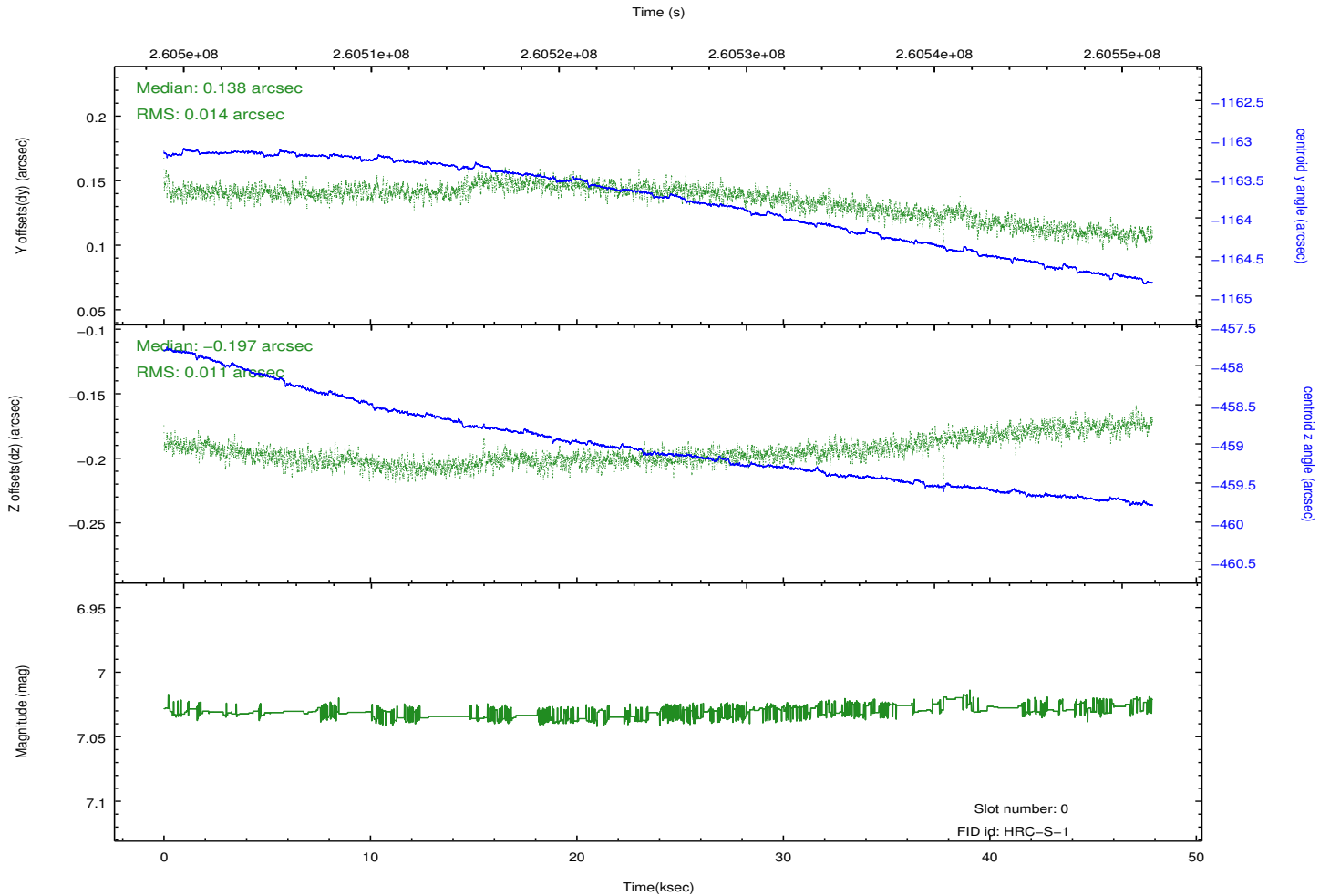
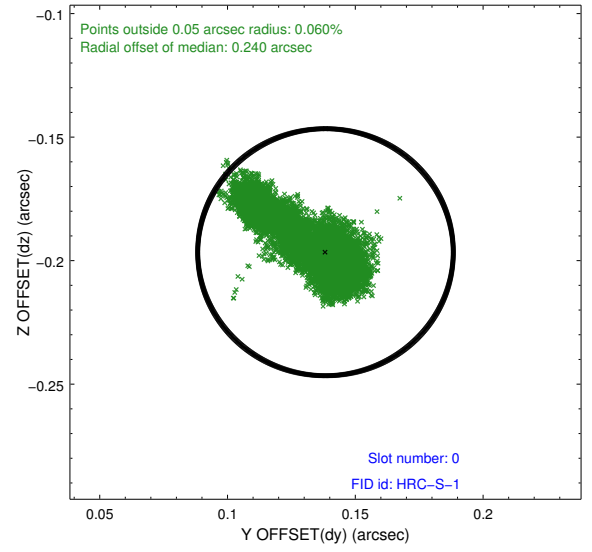
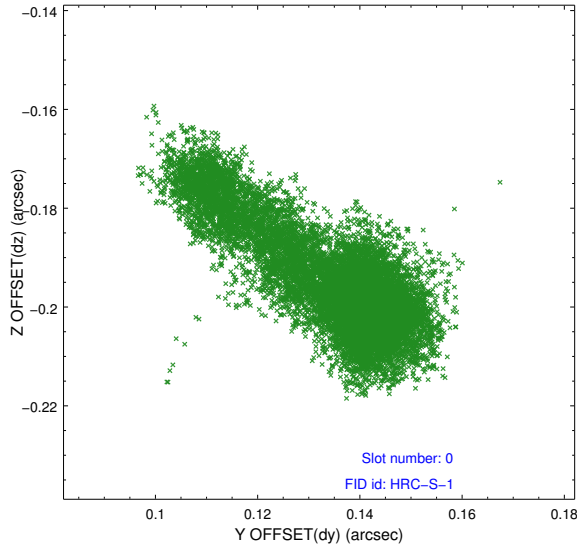


2.4.5 Slot 7

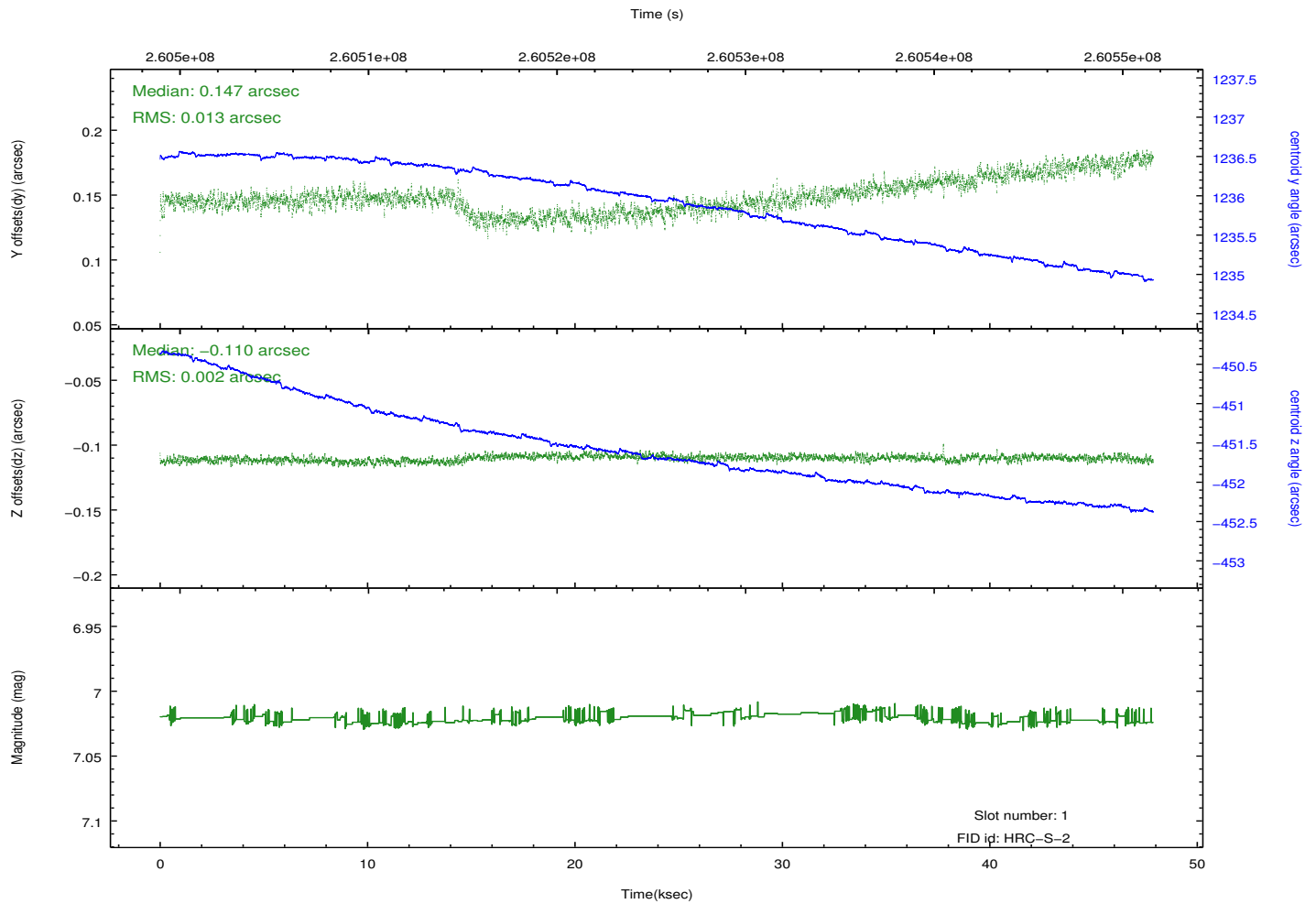
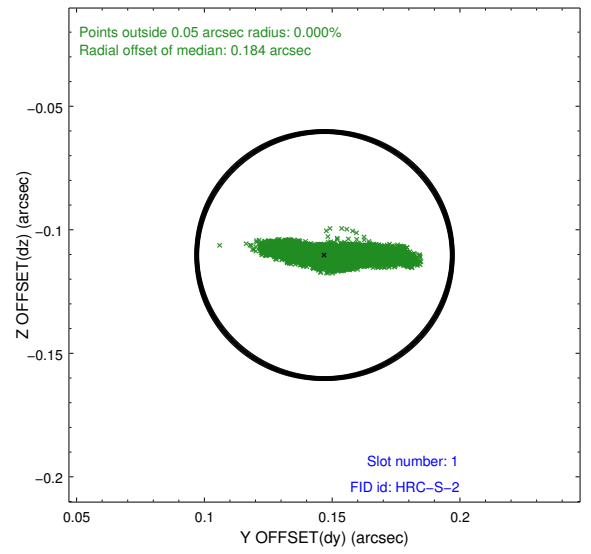
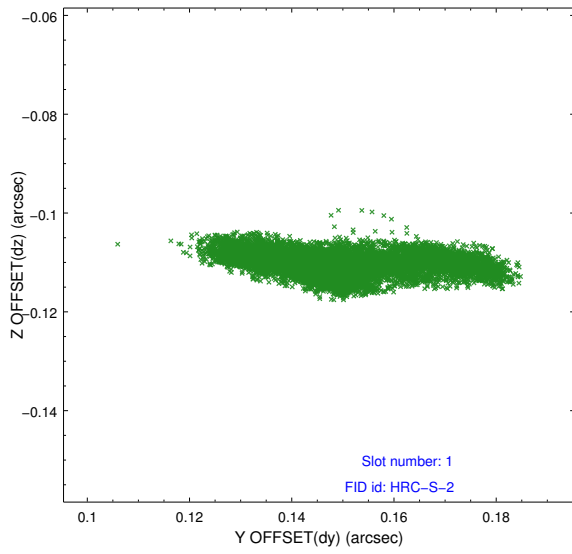


2.5 FID Slots

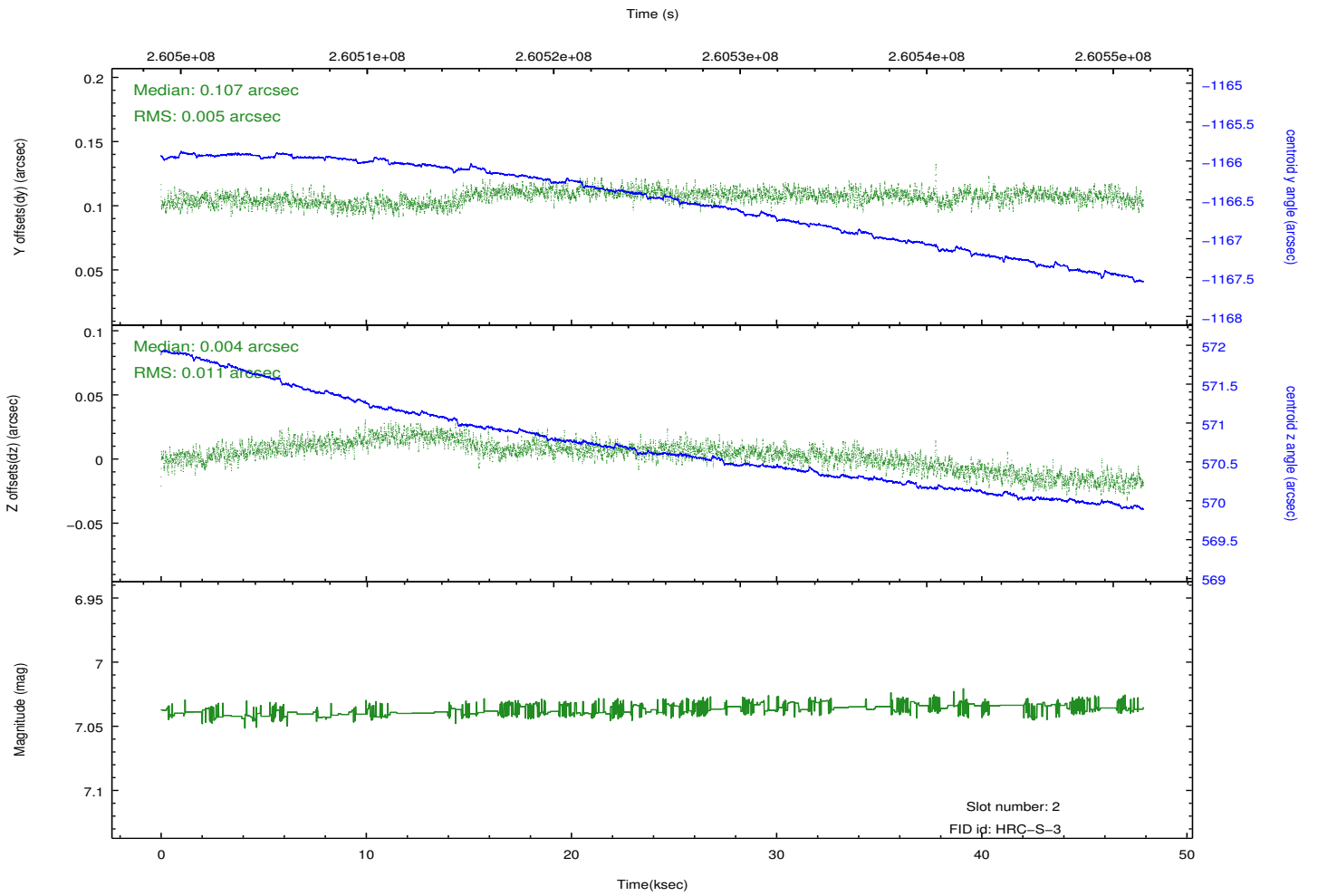
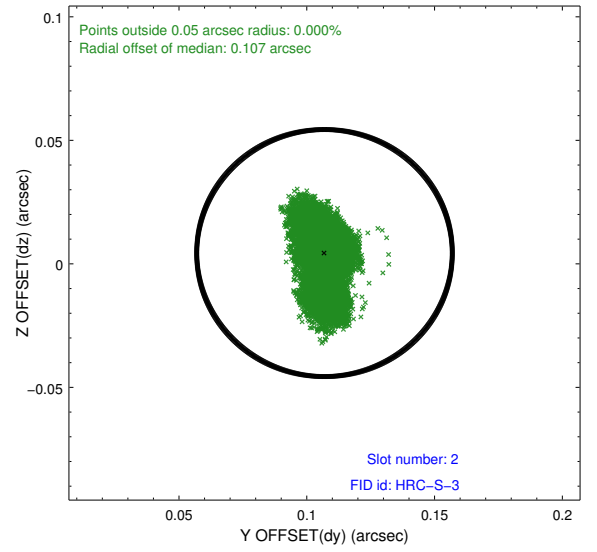
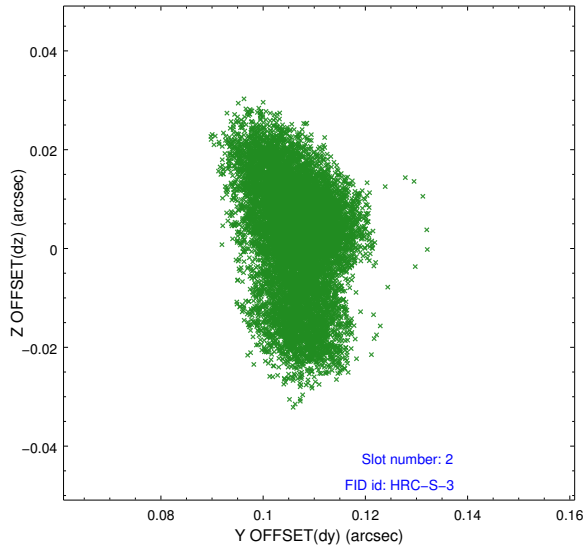
2.5.1 Slot 0



2.5.2 Slot 1

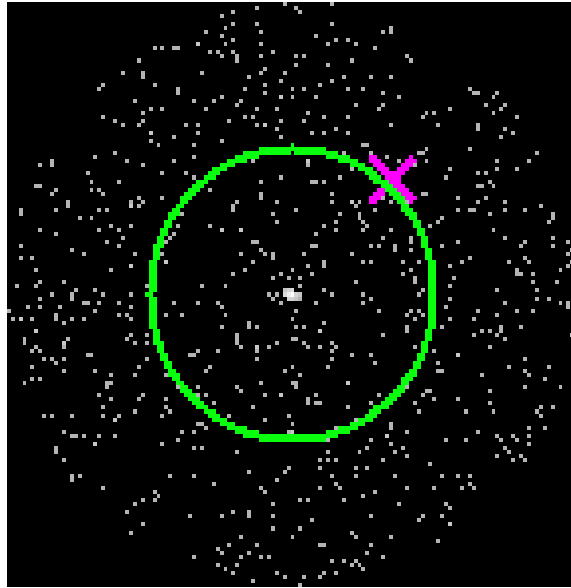


2.5.3 Slot 2



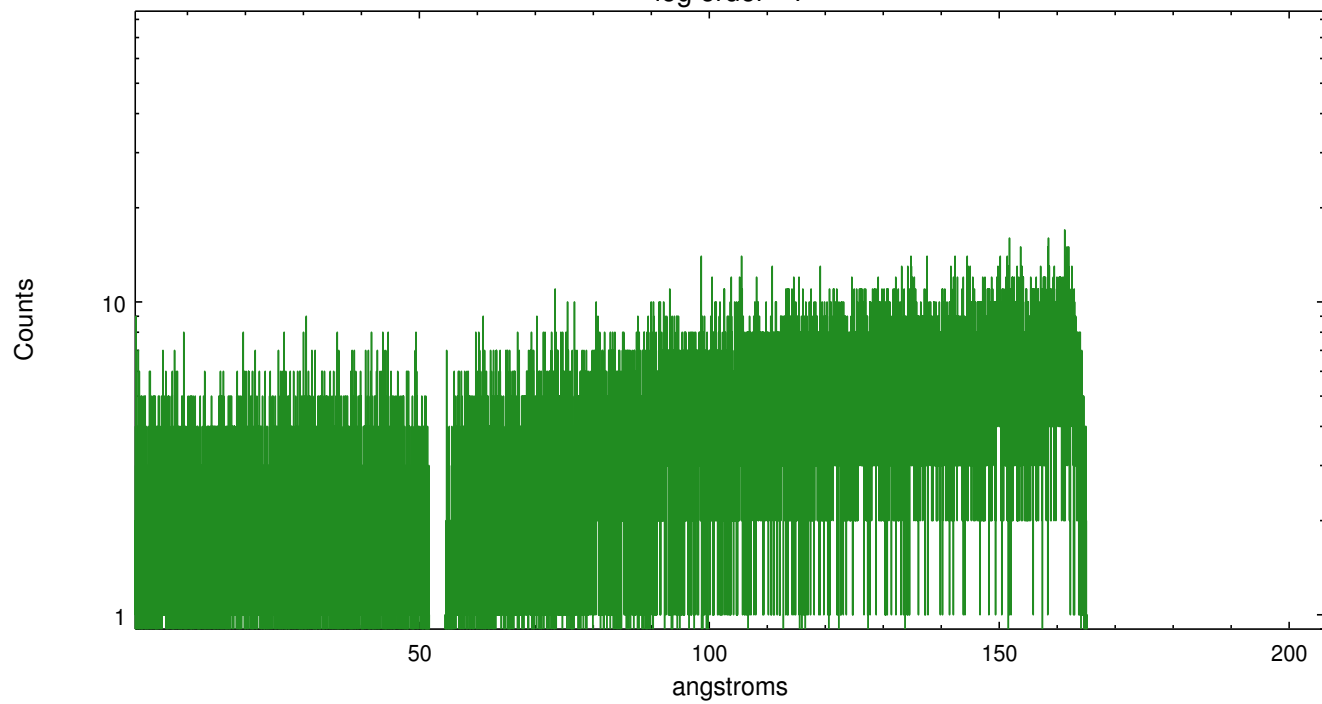
3 Gratings

3.1 LETG Arm

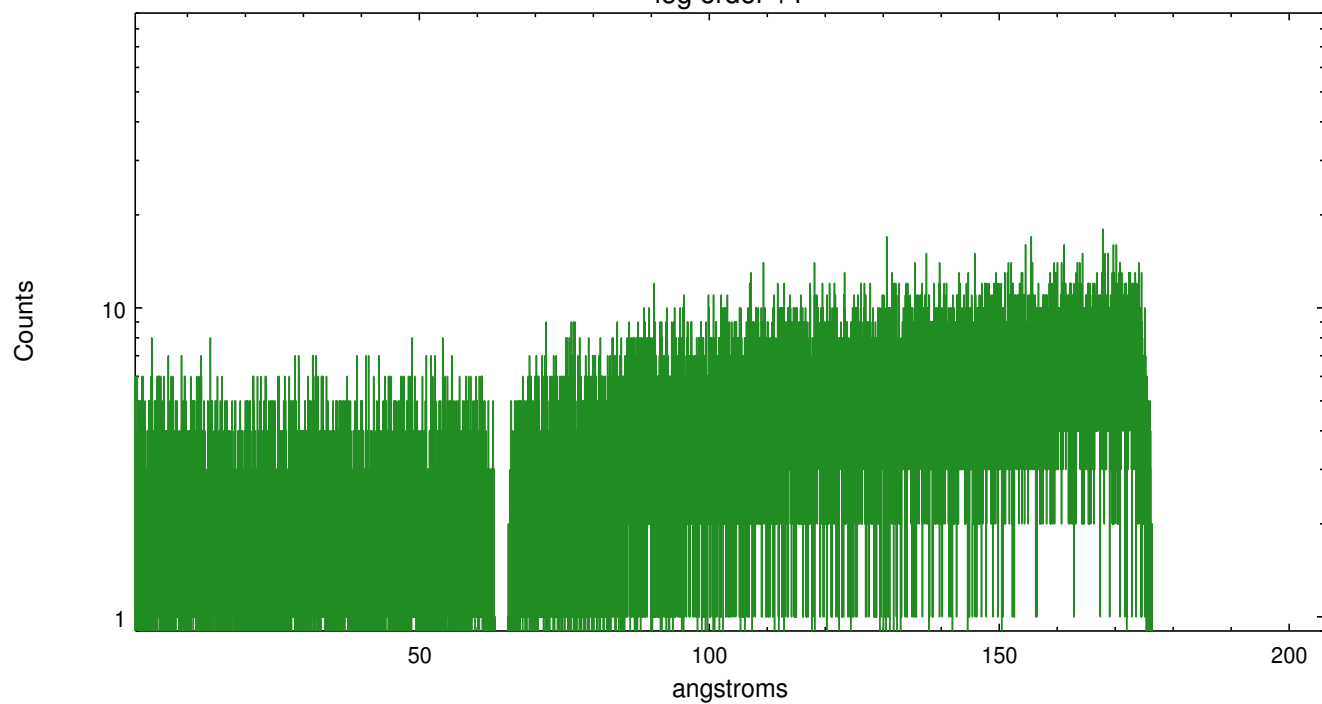


LETG Zero Order

leg order -1



leg order +1



A Summary

A.1 Status

V&V Scientist	Joy Nichols
V&V Date (YYYY-MM-DD)	2012.08.14
V&V Edition	1
V&V Disposition and Status	OK
V&V Charge Time	47.8828772

A.2 Comments