

V&V Reference Report

L2 ASCDS Version : 8.4.3.1

Observation 6587 - L2 Version 2
Chandra X-Ray Center

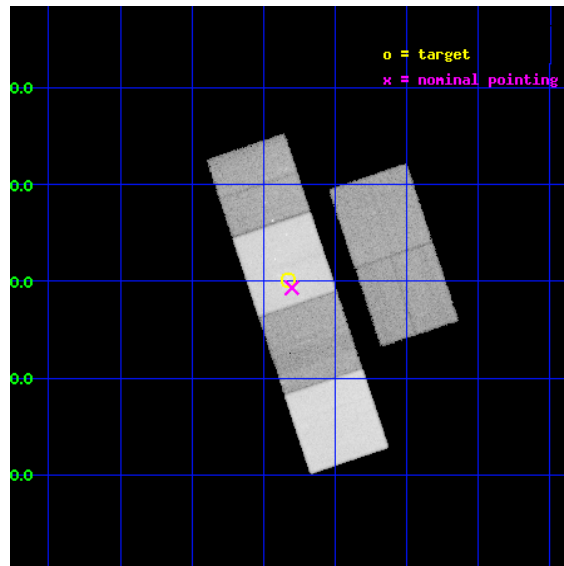
L2 Processing Date : Apr 7 2012

Contents

1	Front	2
2	OBI	3
2.1	OBI	3
2.1.1	Images	3
2.1.2	Bias	3
2.1.3	Parameters	4
2.1.4	Events	4
2.2	Compared Parameters	5
2.3	Aspect	6
2.4	Star Slots	9
2.4.1	Slot 3	9
2.4.2	Slot 4	10
2.4.3	Slot 5	11
2.4.4	Slot 6	12
2.4.5	Slot 7	13
2.5	FID Slots	14
2.5.1	Slot 0	14
2.5.2	Slot 1	15
2.5.3	Slot 2	16
A	Summary	17
A.1	Status	17
A.2	Comments	17

1 Front

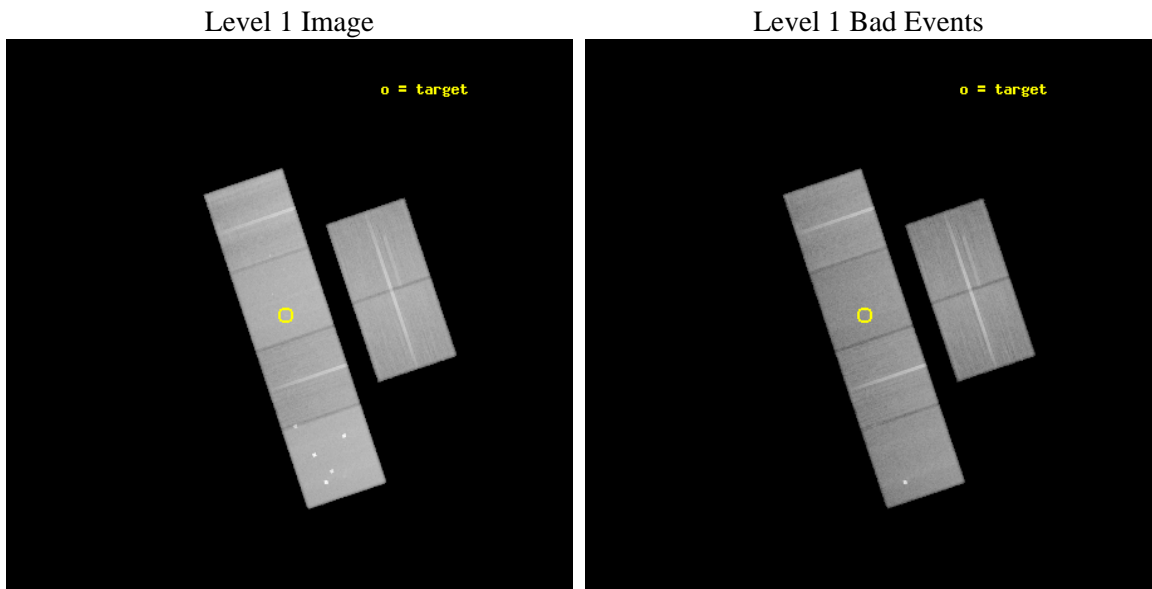
seq_num	400492	Sequence number
obs_id	6587	Observation id
title	X-Ray Observations of a New Rich Galactic Globular Cluster	Proposa
observer	Prof. Saul Rappaport	Principal investigator
object	GLIMPSE-C01	Source name
dtycycle	0	
cycle	P	events from which exps? Prim/Second/Both
ra_targ	282.207083	Observer's specified target RA [deg]
dec_targ	-1.497222	Observer's specified target Dec [deg]
ra_nom	282.20059830328	Nominal RA [deg]
dec_nom	-1.5112134538582	Nominal Dec [deg]
roll_nom	251.43719901514	Nominal Roll [deg]
revision	2	Processing version of data
ontime	46502.399826825	Sum of GTIs [s]
livetime	45913.558439834	Livetime [s]
ontime2	46502.399826825	Sum of GTIs [s]
ontime3	46502.399826825	Sum of GTIs [s]
ontime5	46502.399826825	Sum of GTIs [s]
ontime6	46502.399826825	Sum of GTIs [s]
ontime7	46502.399826825	Sum of GTIs [s]
ontime8	46499.158836544	Sum of GTIs [s]
l2events	696970	Number of level 2 events



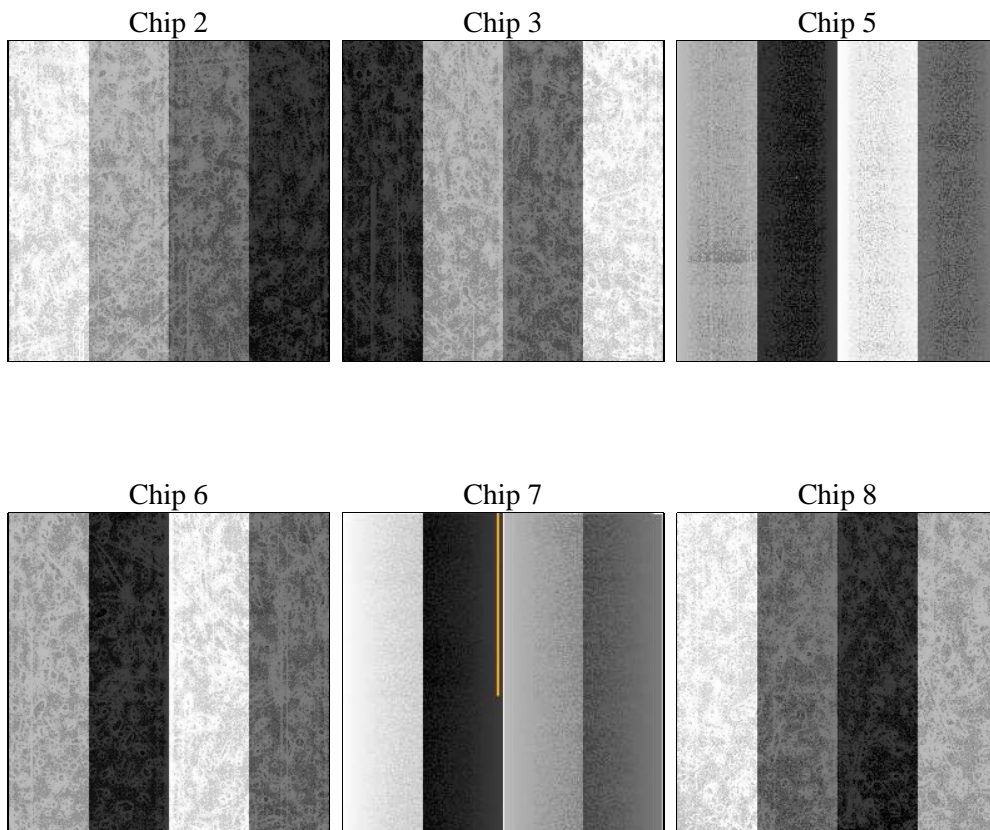
2 OBI

2.1 OBI

2.1.1 Images



2.1.2 Bias



2.1.3 Parameters

obi_num	0	Obi number	sched_exp_time	46360.100000	[s] Scheduled observation exposure time
ascdsver	8.4.3.1	Processing system revision	ontime	46502.399826825	Sum of GTIs [s]
caldbver	4.4.9	 	ontime2	46502.399826825	Sum of GTIs [s]
date	2012-04-07T11:21:40	Date and time of file creation	ontime3	46502.399826825	Sum of GTIs [s]
revision	2	Processing version of data	ontime5	46502.399826825	Sum of GTIs [s]
			ontime6	46502.399826825	Sum of GTIs [s]
			ontime7	46502.399826825	Sum of GTIs [s]
			ontime8	46499.158836544	Sum of GTIs [s]
			l1events	3081390	Number of level 1 events

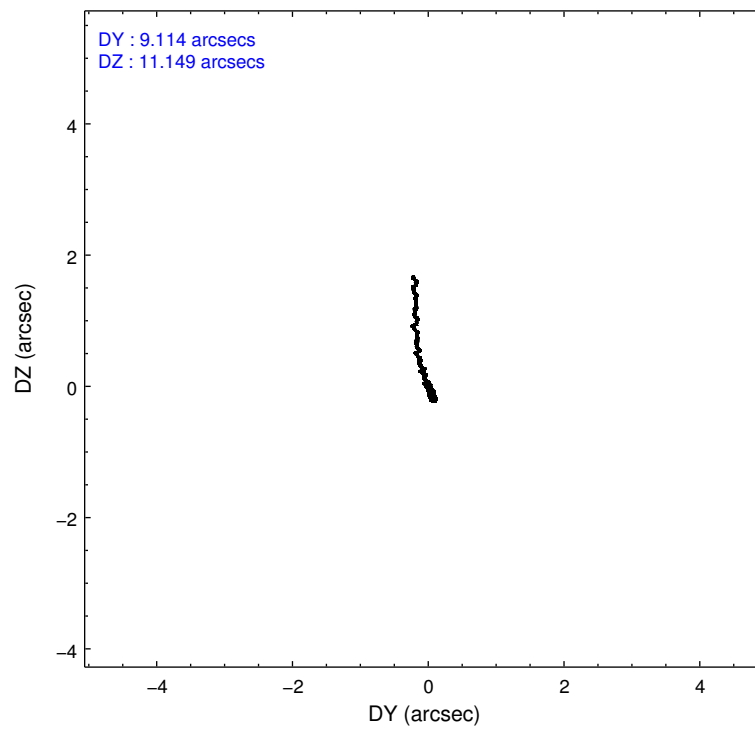
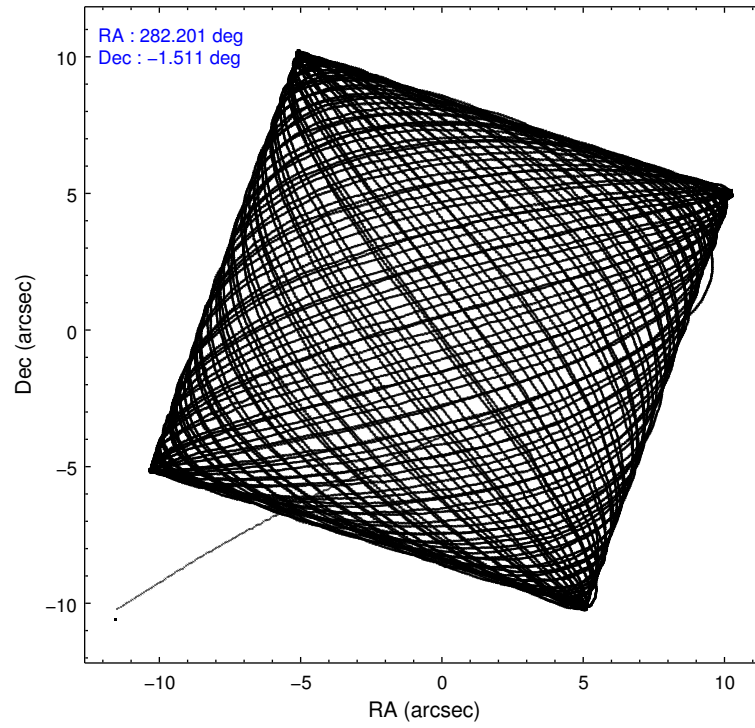
2.1.4 Events

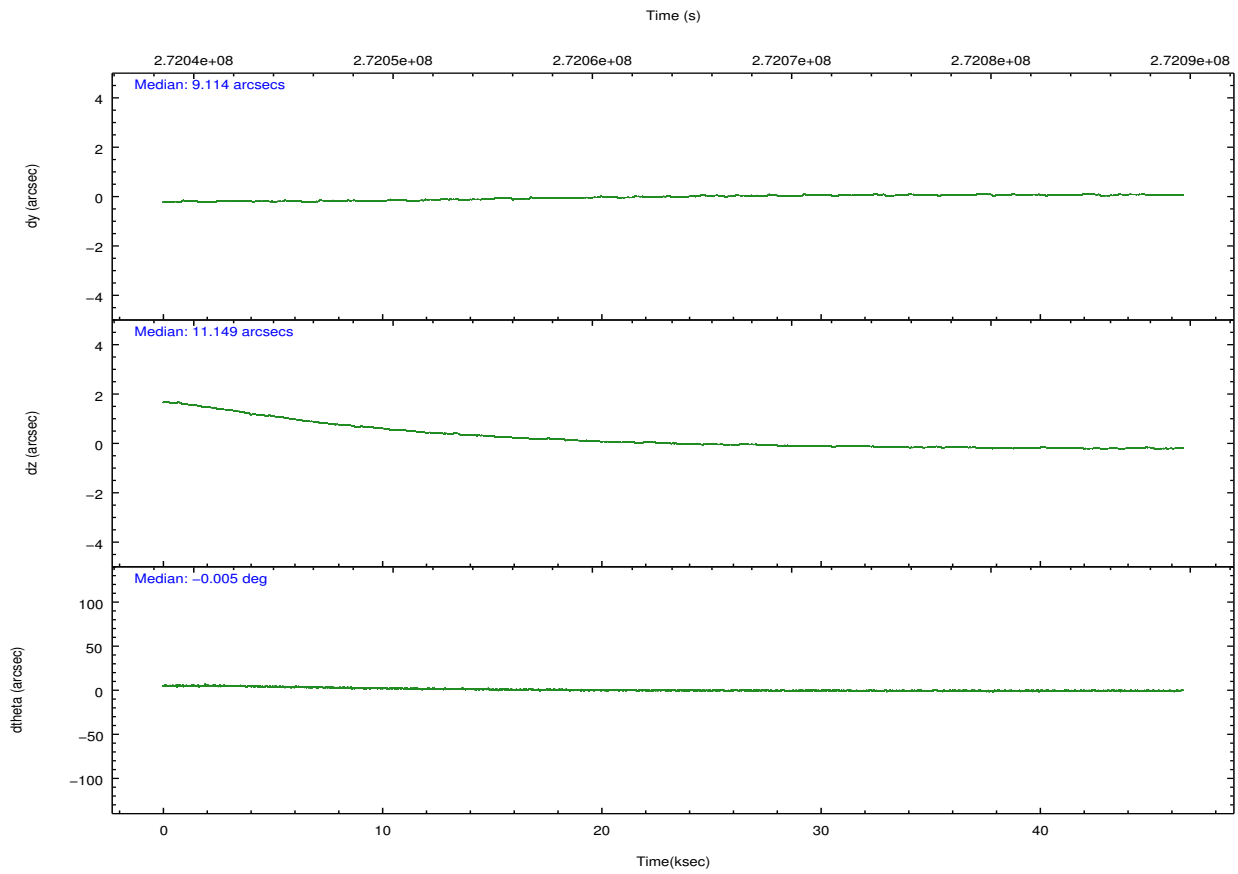
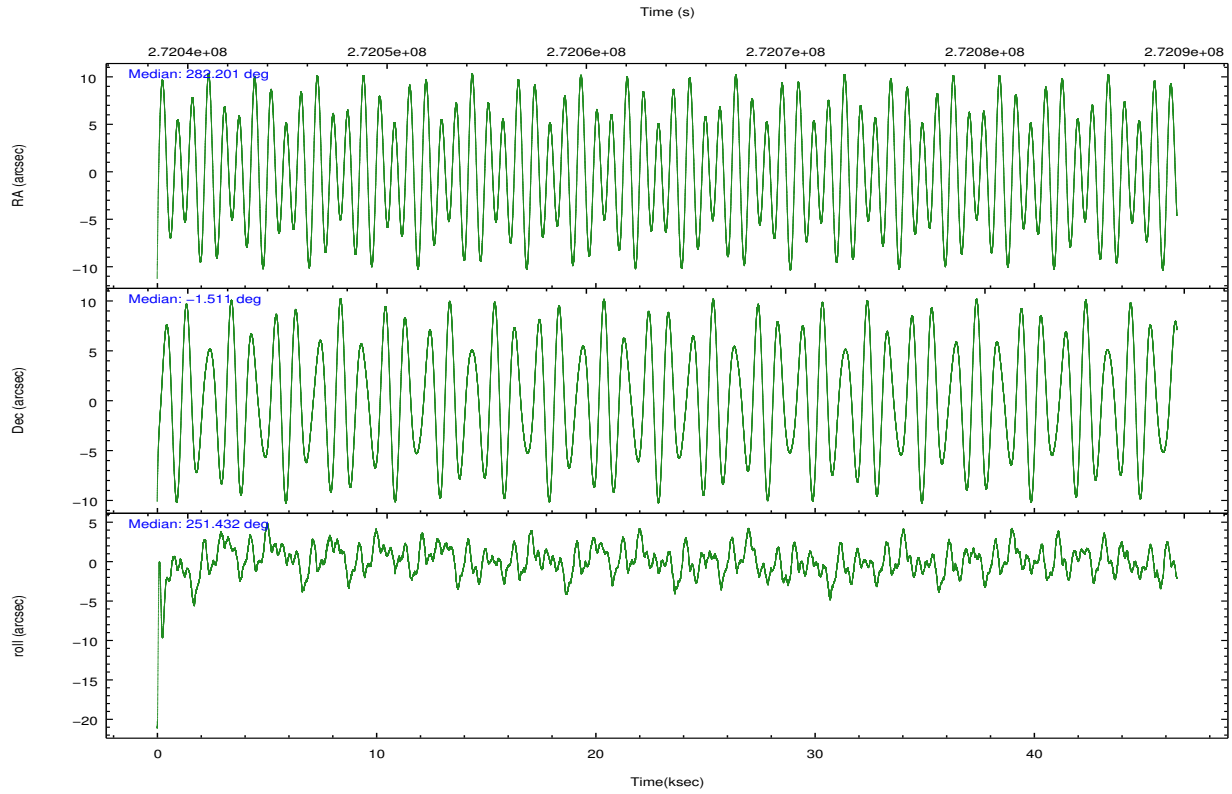
	ccd 2	ccd 3	ccd 5	ccd 6	ccd 7	ccd 8		ccd 2	ccd 3	ccd 5	ccd 6	ccd 7	ccd 8
level 1 events	442136	417911	670591	430858	581589	538305	grade 0 events	21742	22167	47930	21173	21557	38544
rejected events	392288	367801	354207	378431	338568	419206		4%	5%	7%	4%	3%	7%
rejected %	88%	88%	52%	87%	58%	77%	grade 1 events	271	278	1062	216	576	421
								0%	0%	0%	0%	0%	0%
							grade 2 events	10410	9734	91873	11110	48885	26271
								2%	2%	13%	2%	8%	4%
							grade 3 events	4533	4763	11016	4827	20951	12254
								1%	1%	1%	1%	3%	2%
							grade 4 events	4639	4730	10080	4937	20706	11428
								1%	1%	1%	1%	3%	2%
							grade 5 events	16487	19016	45765	19835	54354	26001
								3%	4%	6%	4%	9%	4%
							grade 6 events	8533	8725	155523	10392	130954	30611
								1%	2%	23%	2%	22%	5%
							grade 7 events	375521	348498	307342	358368	283606	392775
								84%	83%	45%	83%	48%	72%

2.2 Compared Parameters

Parameter	Planned	Actual	Parameter	Planned	Actual
Instrument	ACIS	ACIS	Obspar format version number	7	7
Detector	ACIS-235678	ACIS-235678	Obspar file type	PREDICTED	ACTUAL
Grating	NONE	NONE	Obspar update status	NONE	UPDATED
Data mode	FAINT	FAINT	Number of optional ACIS chips dropped	0	0
Observation mode	POINTING	POINTING	On-chip summing requested	N	N
[deg] Pointing RA	282.194831	282.2005983032795	Subarray requested	NONE	NONE
[deg] Pointing Dec	-1.484592	-1.511213453858211	Alternating exposures requested	N	N
[deg] Pointing Roll	251.280430	251.4371990151424	[s] Primary exposure time	0.000000	3.2
[mm] SIM focus pos	-0.684267	-0.6828225247311905			
[mm] SIM defocus	0	0.001444936568705701			
[mm] SIM translation stage pos	-190.132523	-190.1425803651734			
[mm] SIM translation stage offset	0	0.01005778216563158			
[s] Observation start time (MET)	272040943.184000	272039887.85374			
Observation start date	2006-08-15T14:54:38	2006-08-15T14:38:07			
[s] Observation end time (MET)	272087304.184000	272087528.83098			
Observation end date	2006-08-16T03:47:19	2006-08-16T03:52:08			
Read mode	TIMED	TIMED			

2.3 Aspect





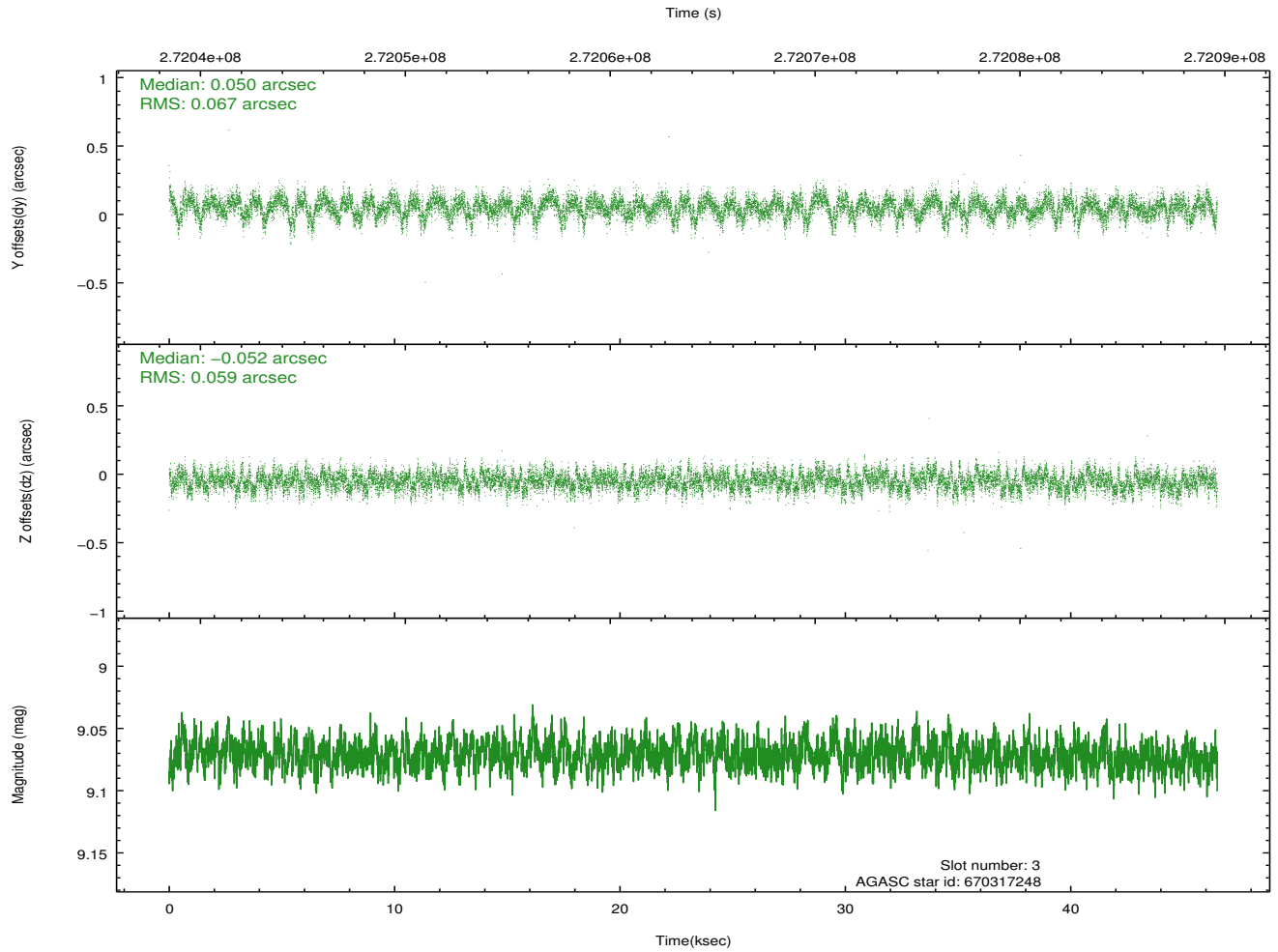
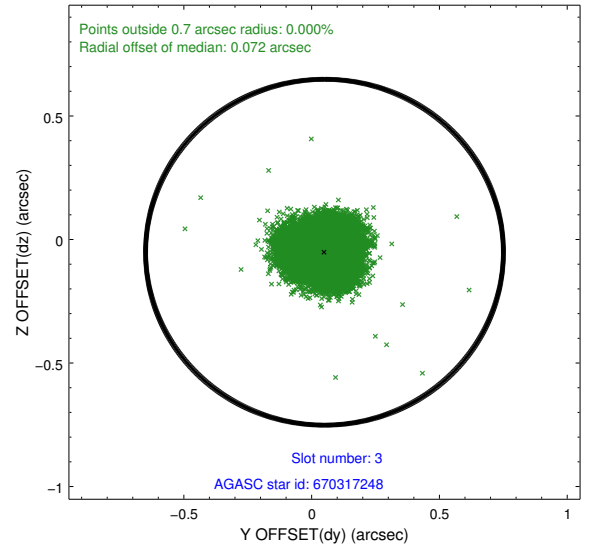
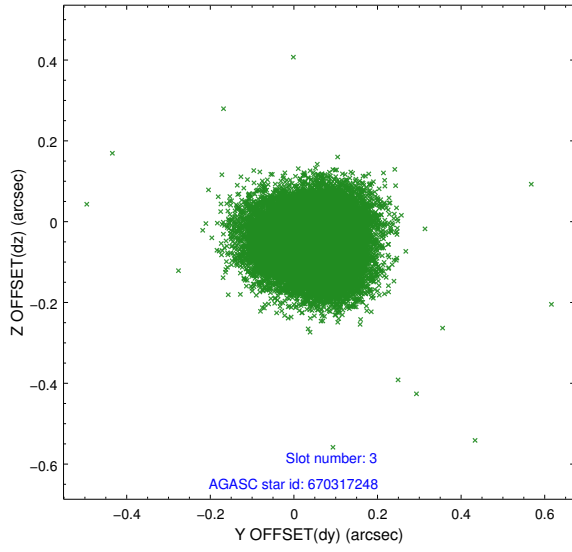
Slot Statistics

slot	status	id	mag	n_pts	med_dy	med_dz	dr1	dr2	ra	dec	mean_y	mean_z
0	FID	ACIS-S-2	7.11	11345	-0.041	-0.026	0.013	0.036	0.000000	0.000000	-761.90	-1732.66
1	FID	ACIS-S-4	7.22	11344	0.158	0.027	0.018	0.034	0.000000	0.000000	2151.54	175.92
2	FID	ACIS-S-5	7.23	11345	-0.147	0.008	0.011	0.027	0.000000	0.000000	-1814.89	169.52
3	GUIDE	670317248	9.07	22558	0.050	-0.052	0.094	0.153	282.282657	-0.892294	-2120.52	-385.09
4	GUIDE	670317320	7.95	22616	-0.027	-0.031	0.048	0.079	281.764311	-1.843342	1720.78	-1052.45
5	GUIDE	670826608	9.21	22675	0.082	0.046	0.089	0.145	282.595495	-2.141533	1777.79	2124.49
6	GUIDE	670312032	8.15	22682	-0.071	0.002	0.068	0.106	282.314405	-0.981452	-1853.26	-173.67
7	GUIDE	670829768	7.51	22689	-0.031	0.033	0.052	0.083	281.927934	-2.010470	2101.50	-301.59

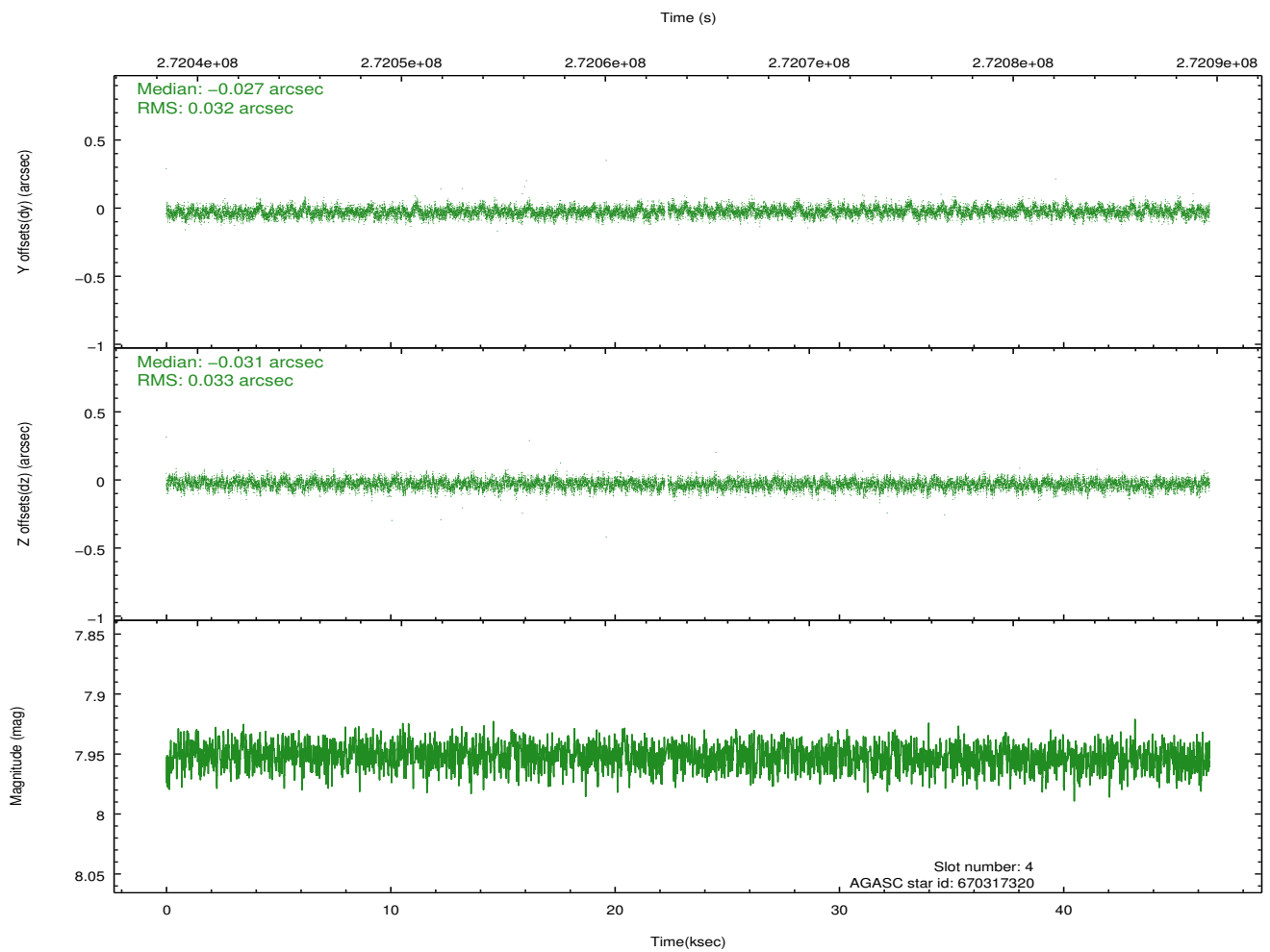
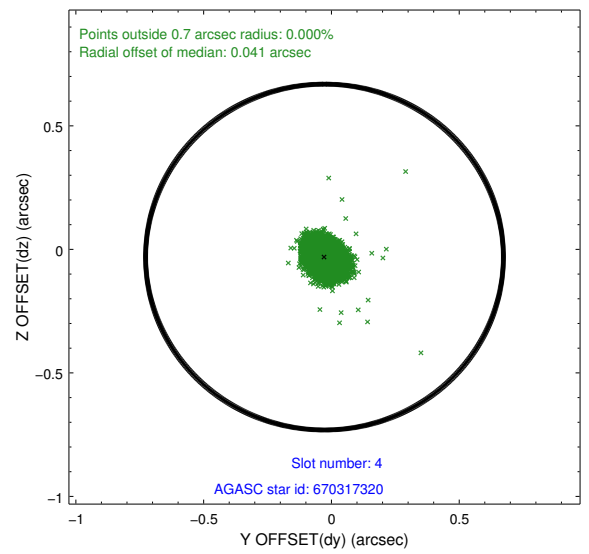
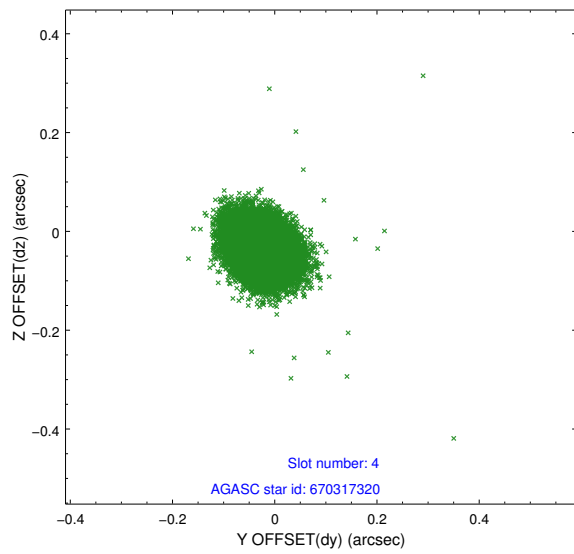
∞

2.4 Star Slots

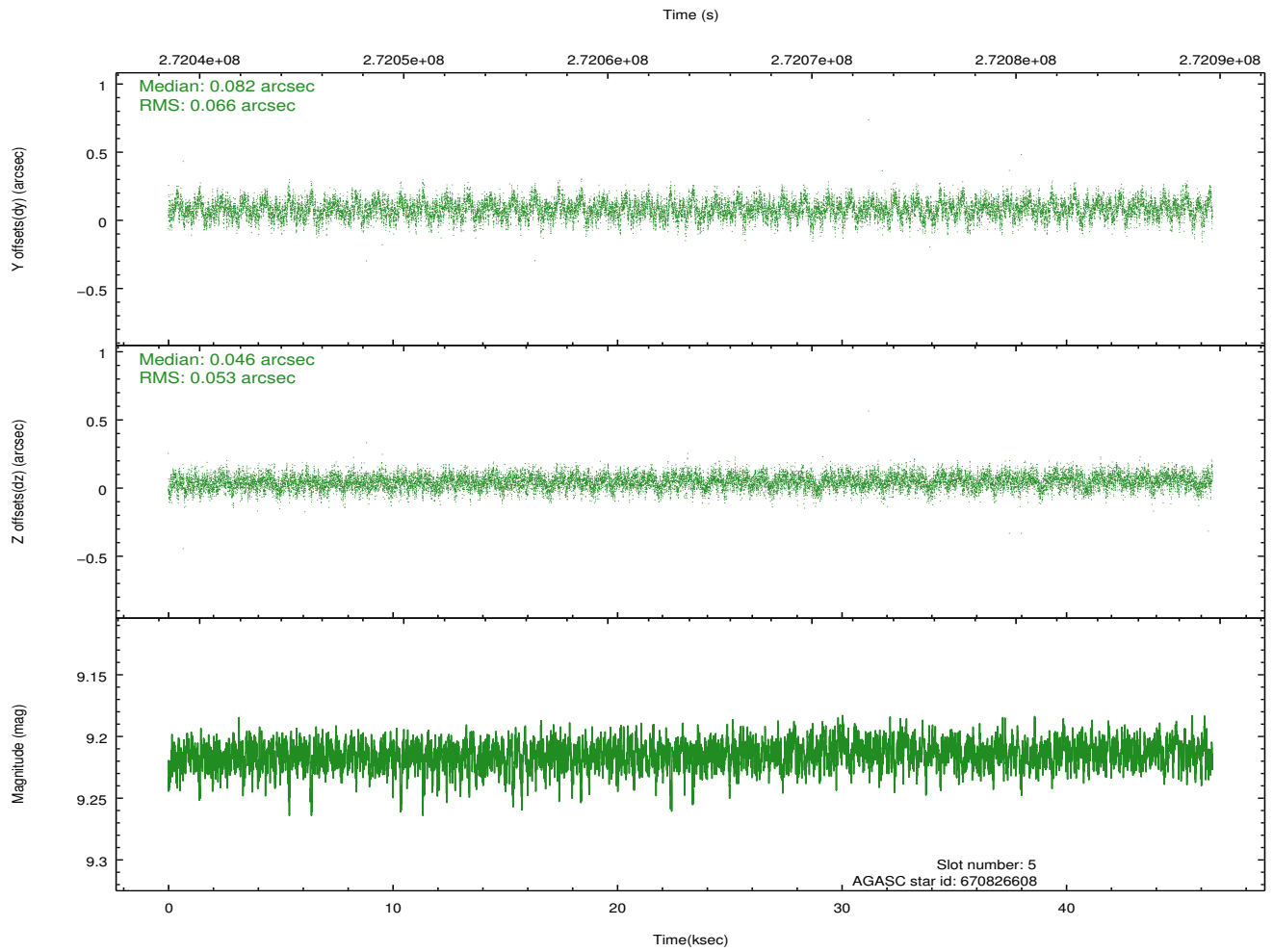
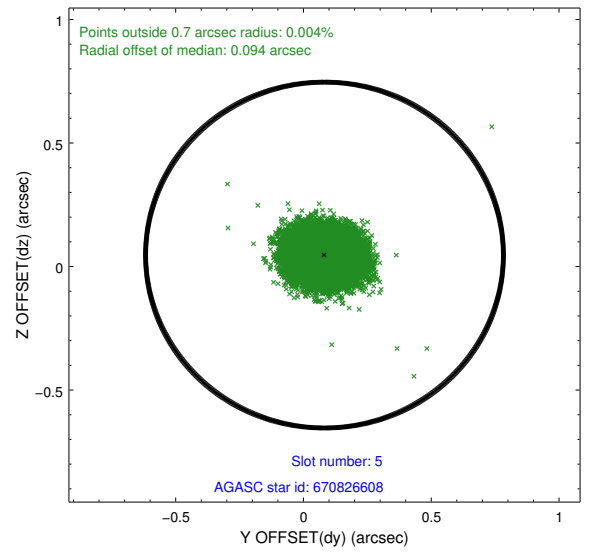
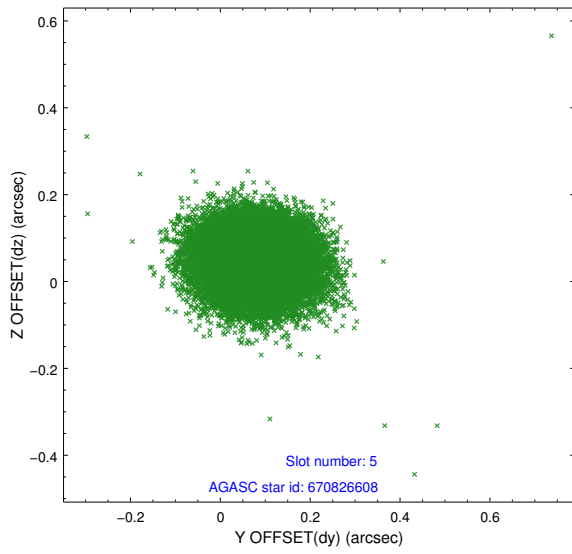
2.4.1 Slot 3



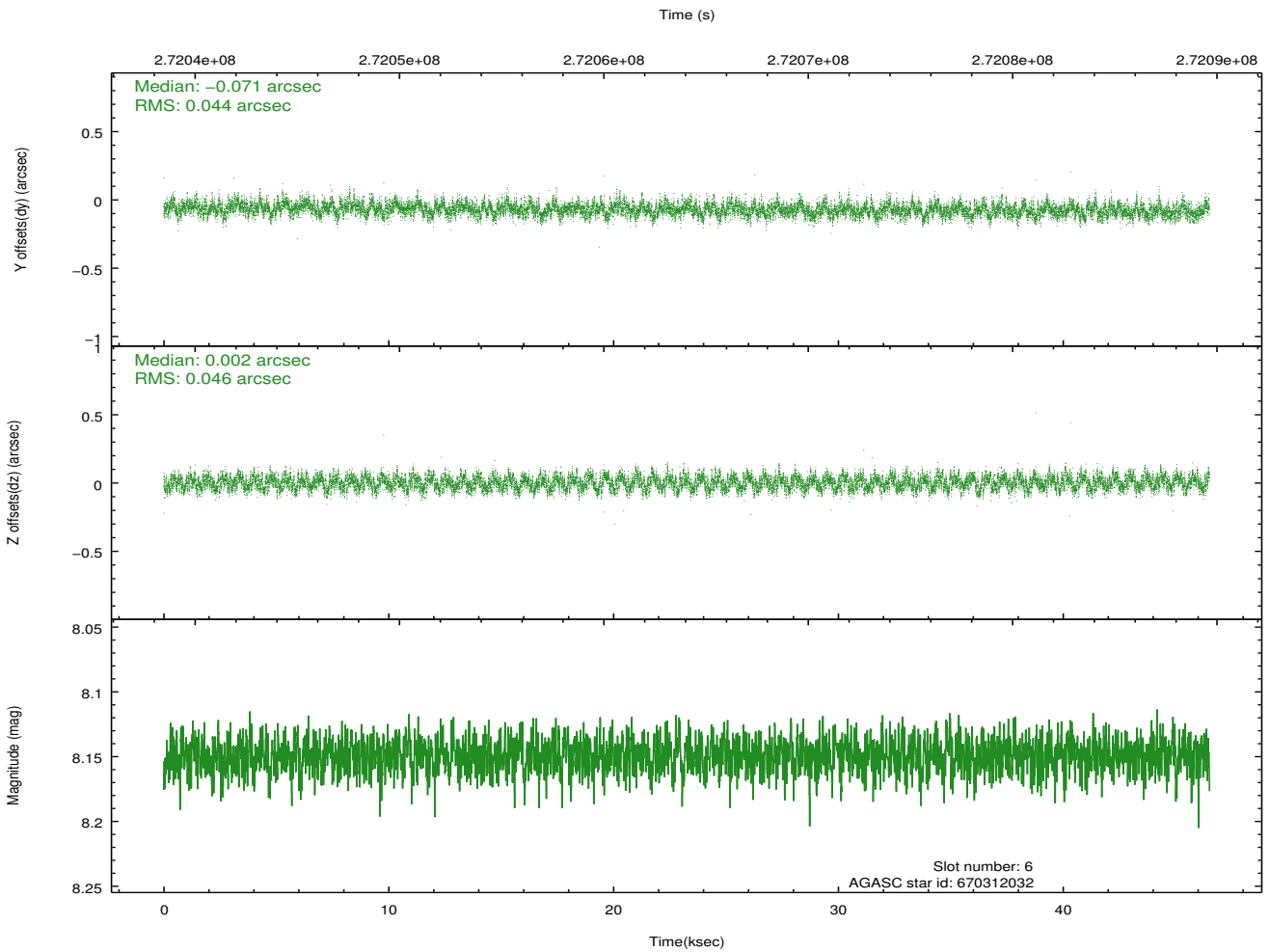
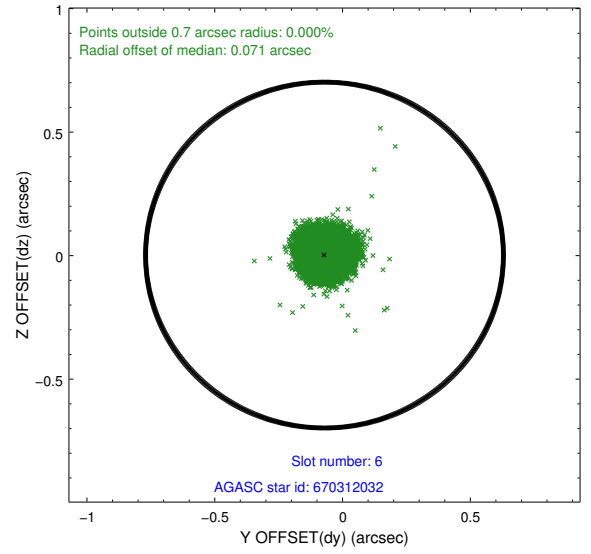
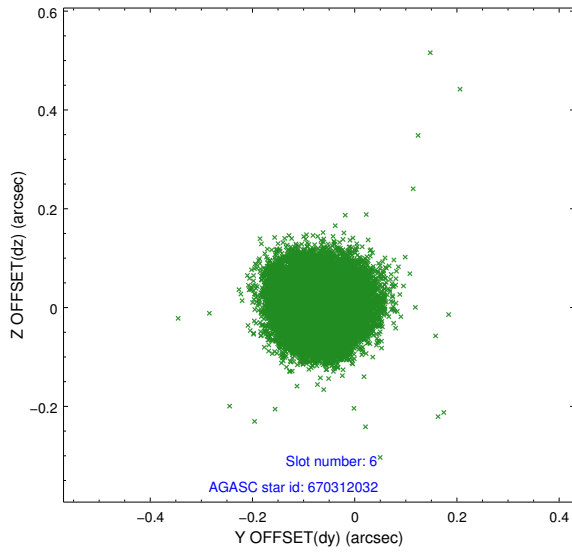
2.4.2 Slot 4



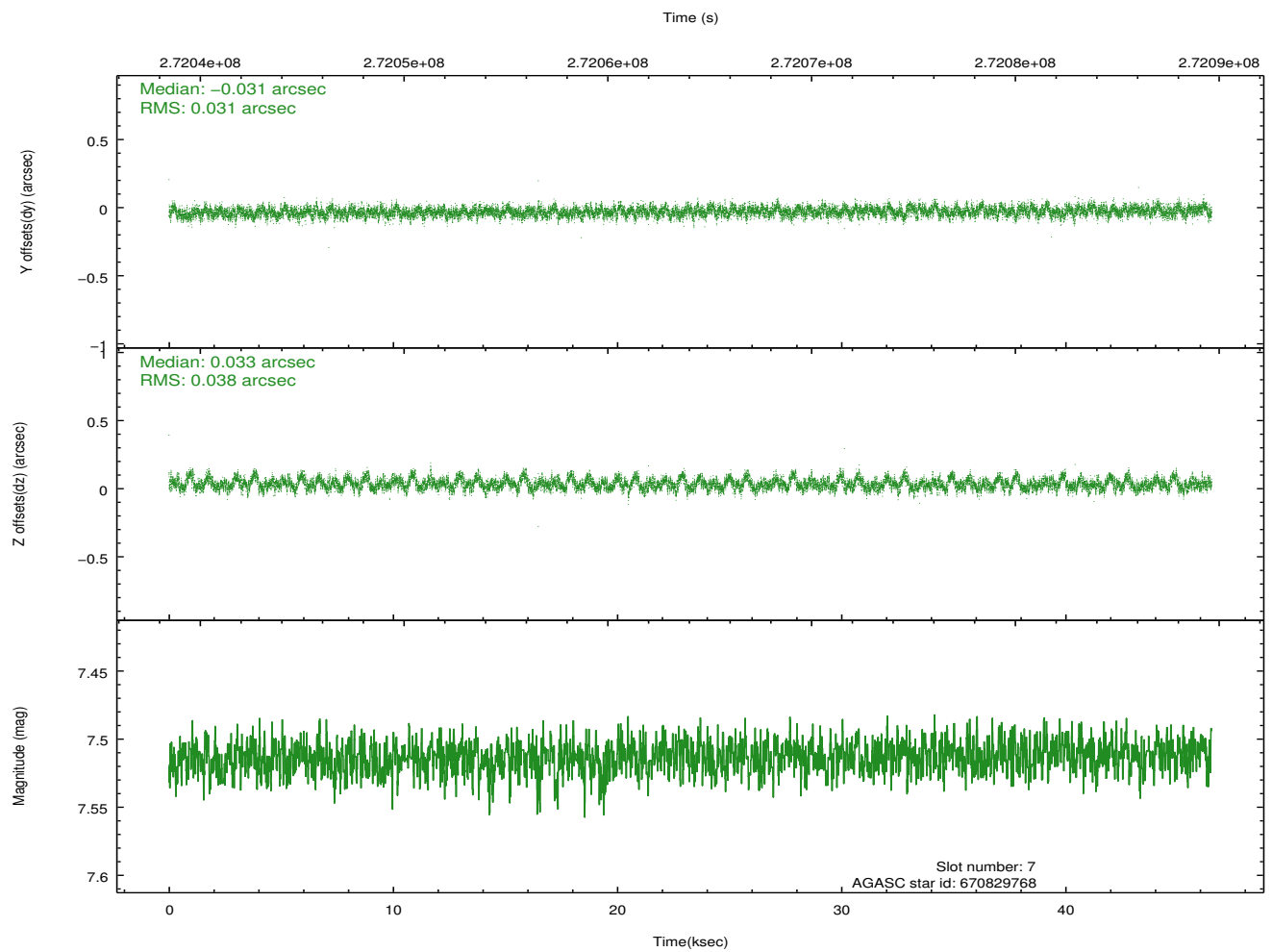
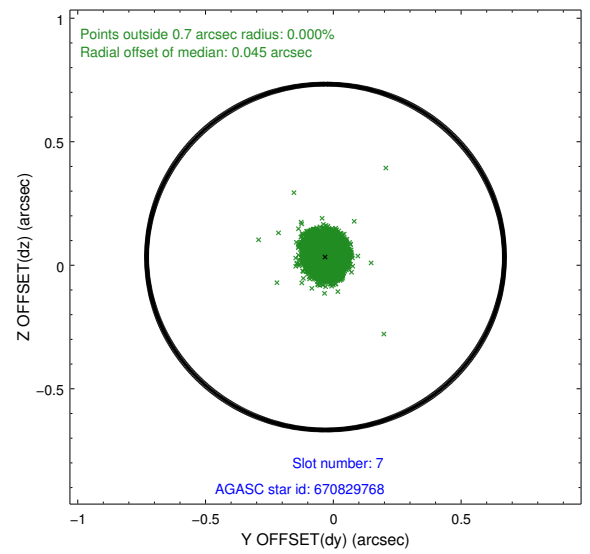
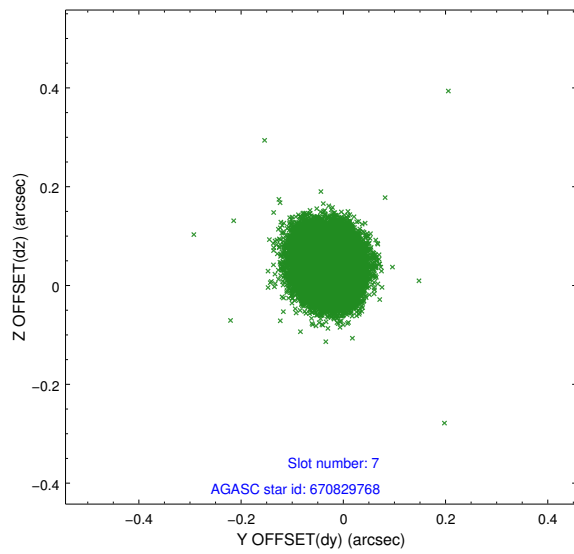
2.4.3 Slot 5



2.4.4 Slot 6

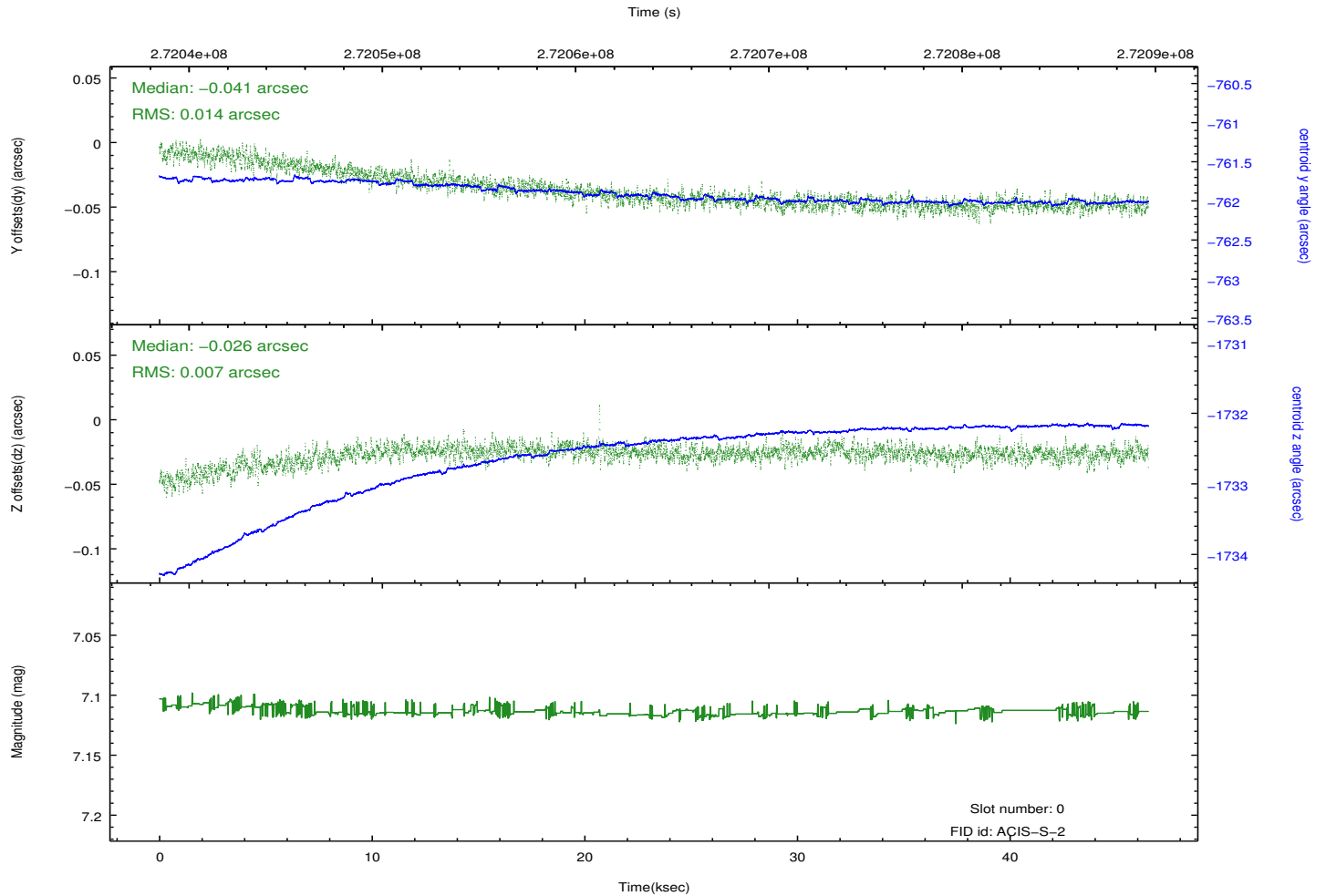
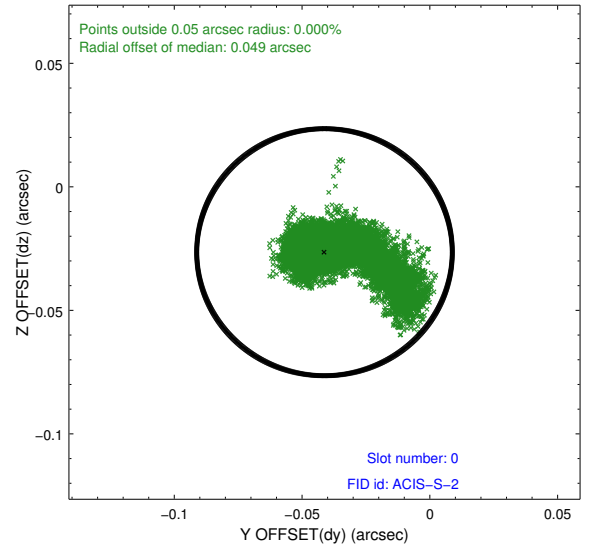
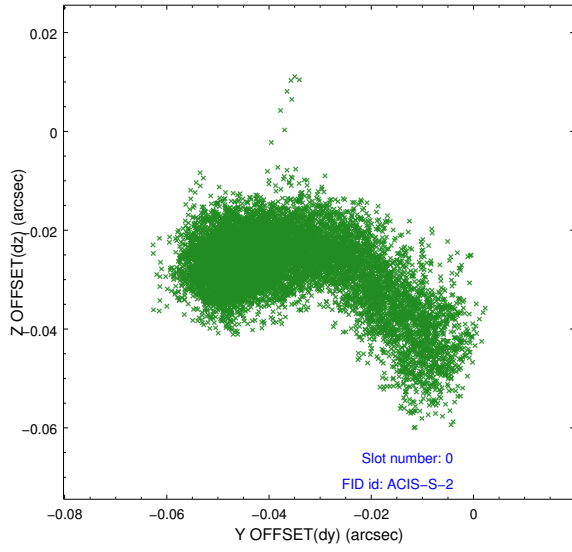


2.4.5 Slot 7

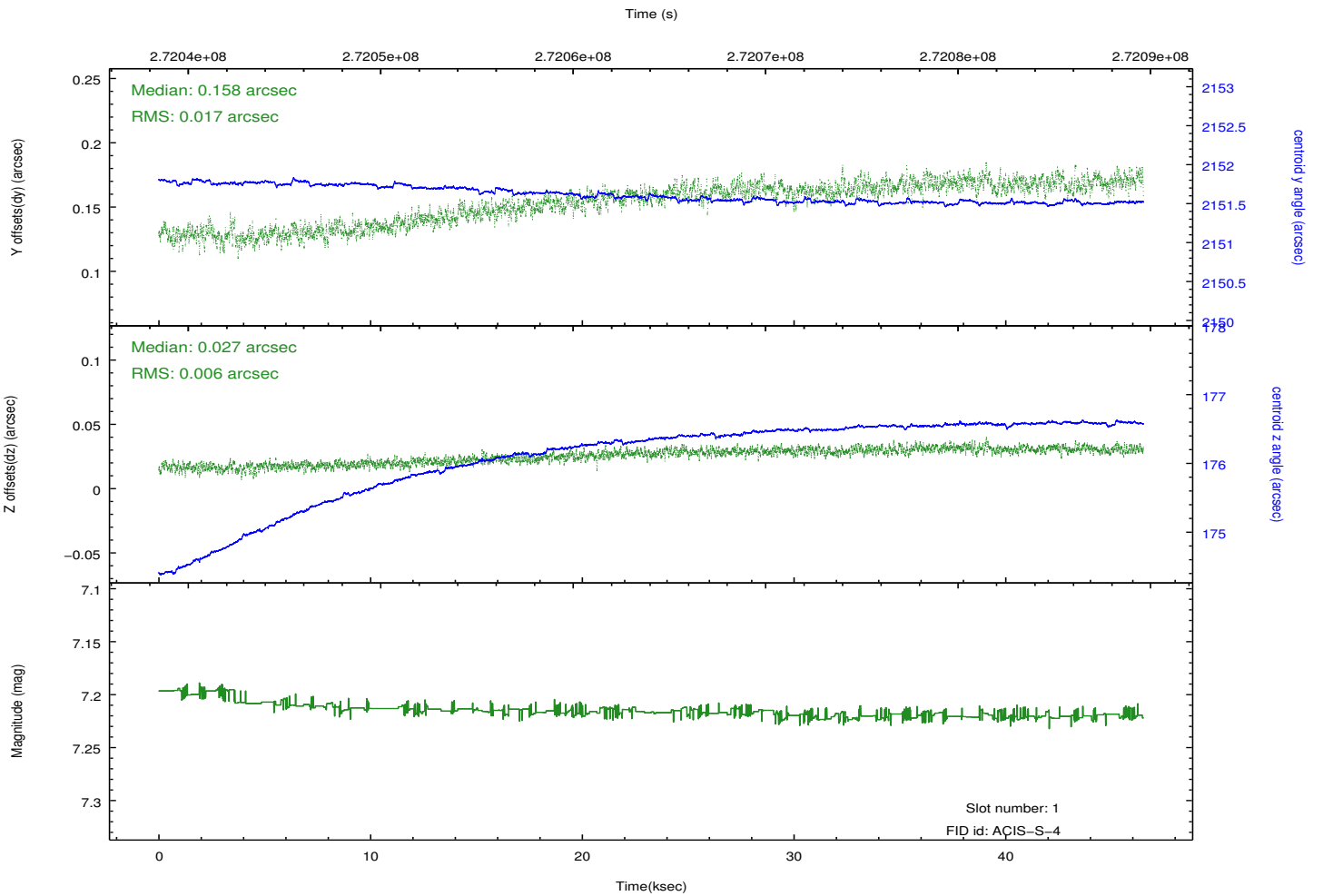
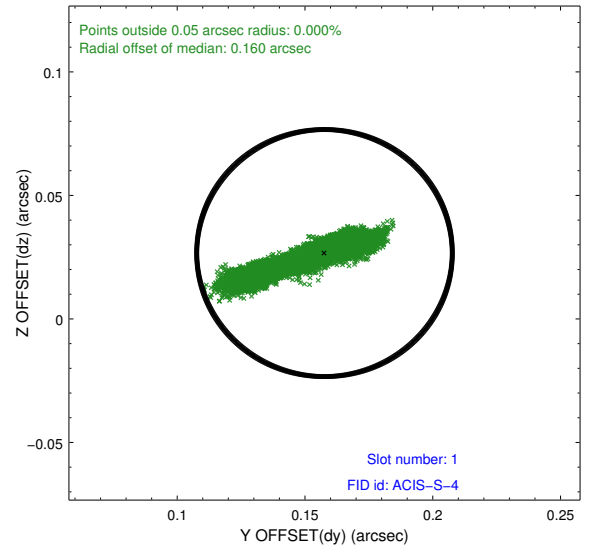
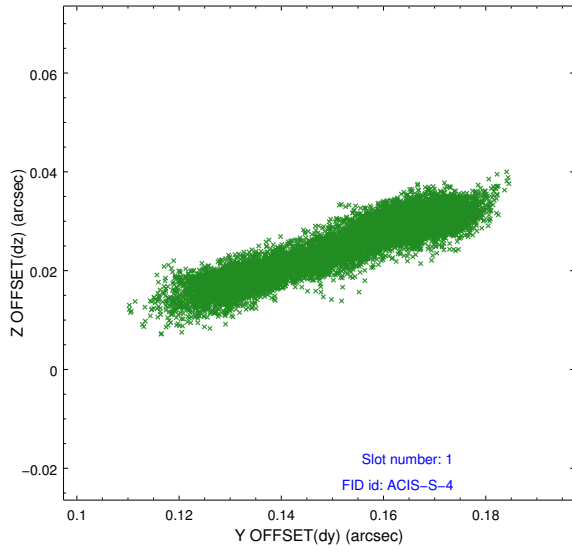


2.5 FID Slots

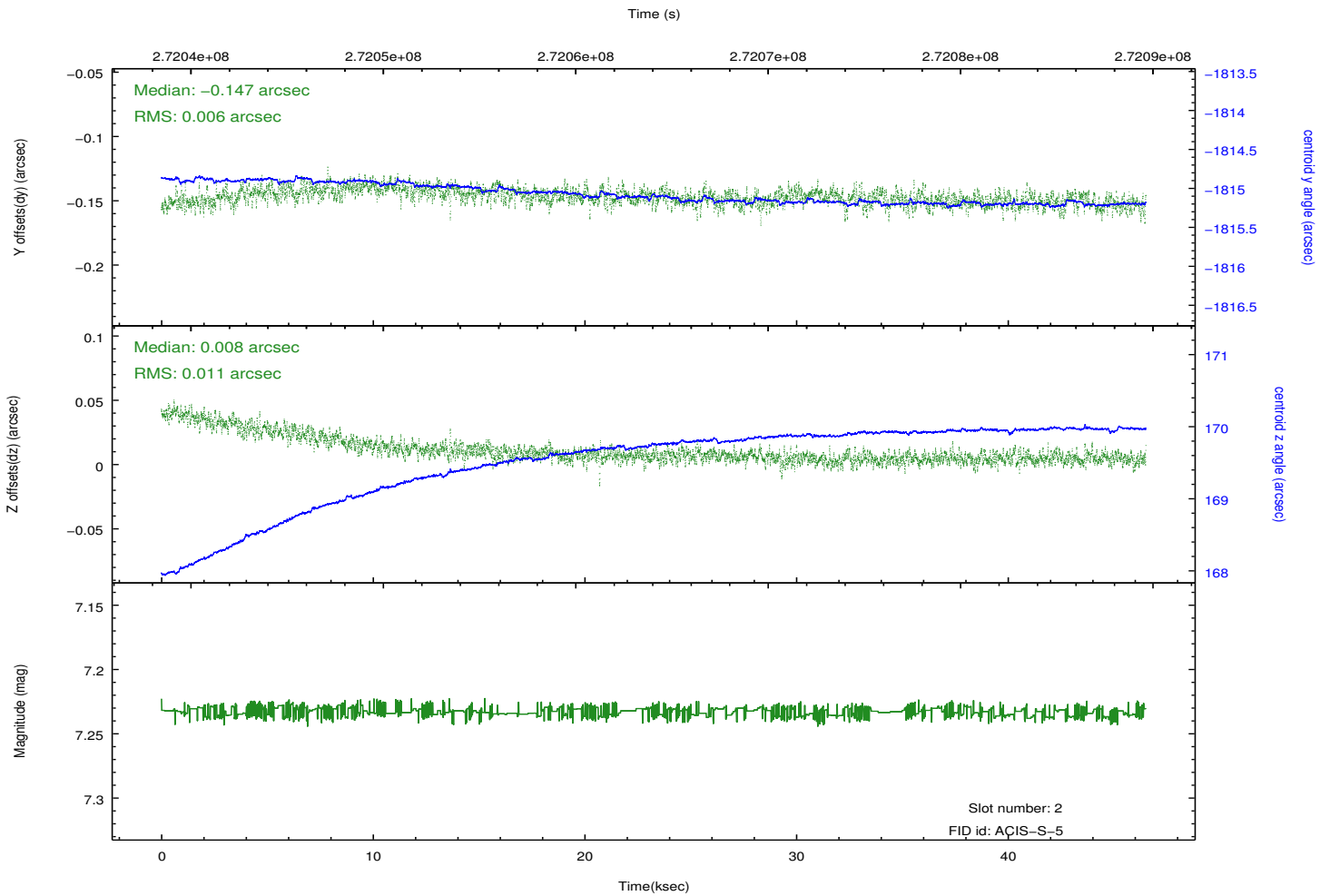
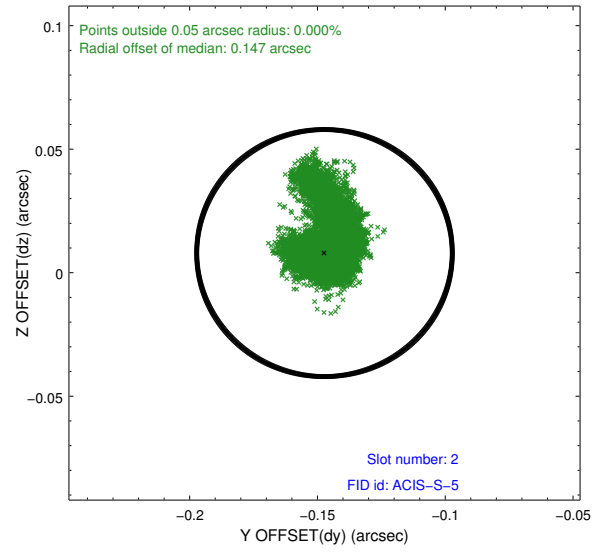
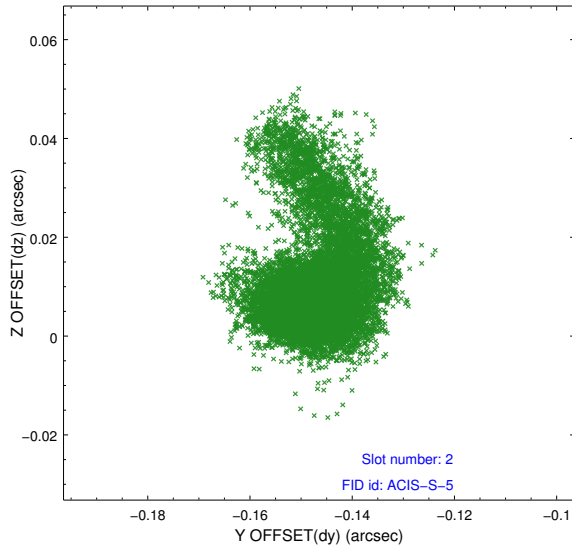
2.5.1 Slot 0



2.5.2 Slot 1



2.5.3 Slot 2



A Summary

A.1 Status

V&V Scientist	Jen Lauer
V&V Date (YYYY-MM-DD)	2012.04.08
V&V Edition	1
V&V Disposition and Status	OK
V&V Charge Time	46.5023998

A.2 Comments