

# V&V Reference Report

## L2 ASCDS Version : 8.4.3

Observation 6707 - L2 Version 2  
Chandra X-Ray Center

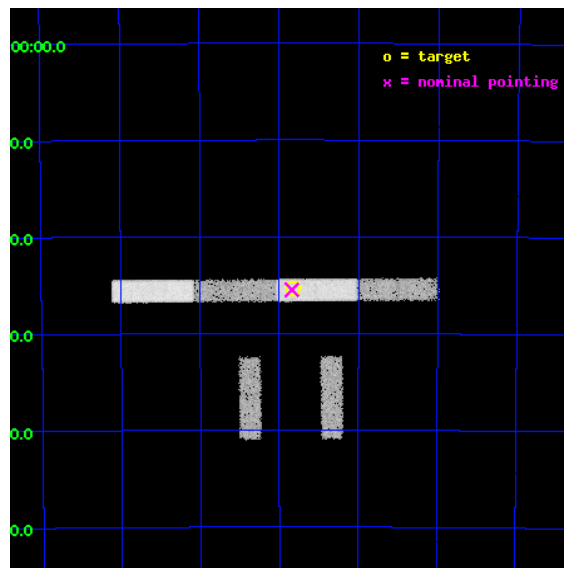
L2 Processing Date : Apr 1 2012

## Contents

<b>1</b>	<b>Front</b>	<b>2</b>
<b>2</b>	<b>OBI</b>	<b>3</b>
2.1	OBI . . . . .	3
2.1.1	Images . . . . .	3
2.1.2	Bias . . . . .	3
2.1.3	Parameters . . . . .	4
2.1.4	Events . . . . .	4
2.2	Compared Parameters . . . . .	5
2.3	Aspect . . . . .	6
2.4	Star Slots . . . . .	9
2.4.1	Slot 3 . . . . .	9
2.4.2	Slot 4 . . . . .	10
2.4.3	Slot 5 . . . . .	11
2.4.4	Slot 6 . . . . .	12
2.4.5	Slot 7 . . . . .	13
2.5	FID Slots . . . . .	14
2.5.1	Slot 0 . . . . .	14
2.5.2	Slot 1 . . . . .	15
2.5.3	Slot 2 . . . . .	16
<b>A</b>	<b>Summary</b>	<b>17</b>
A.1	Status . . . . .	17
A.2	Comments . . . . .	17

# 1 Front

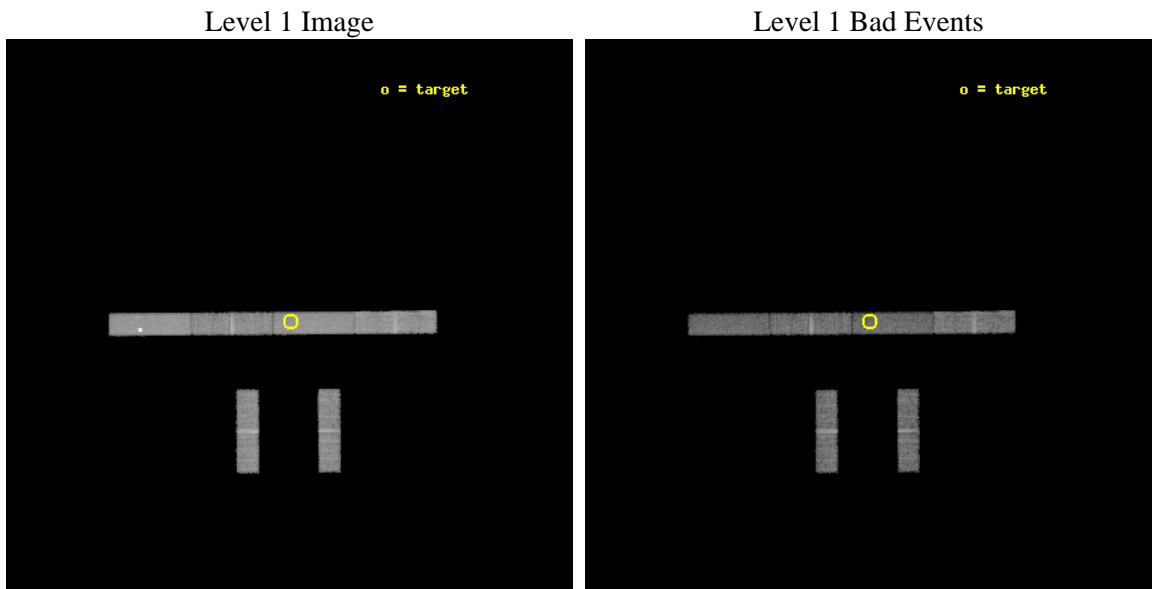
seq_num	500658	Sequence number
obs_id	6707	Observation id
title	Pulsar Wind Nebula Generation: A Spin-down Power Threshold?	Propos
observer	Dr. Eric Gotthelf	Principal investigator
object	PSR J1524-5625	Source name
dtcycle	0	&#160
cycle	P	events from which exps? Prim/Second/Both
ra_targ	231.207917	Observer's specified target RA [deg]
dec_targ	-56.423167	Observer's specified target Dec [deg]
ra_nom	231.21018275809	Nominal RA [deg]
dec_nom	-56.424839905507	Nominal Dec [deg]
roll_nom	359.54107599995	Nominal Roll [deg]
revision	2	Processing version of data
ontime	14174.599923164	Sum of GTIs [s]
livetime	13664.779425331	Livetime [s]
ontime2	14174.599923164	Sum of GTIs [s]
ontime3	14174.599923164	Sum of GTIs [s]
ontime5	14174.599923164	Sum of GTIs [s]
ontime6	14174.599923164	Sum of GTIs [s]
ontime7	14174.599923164	Sum of GTIs [s]
ontime8	14173.458883196	Sum of GTIs [s]
l2events	55277	Number of level 2 events



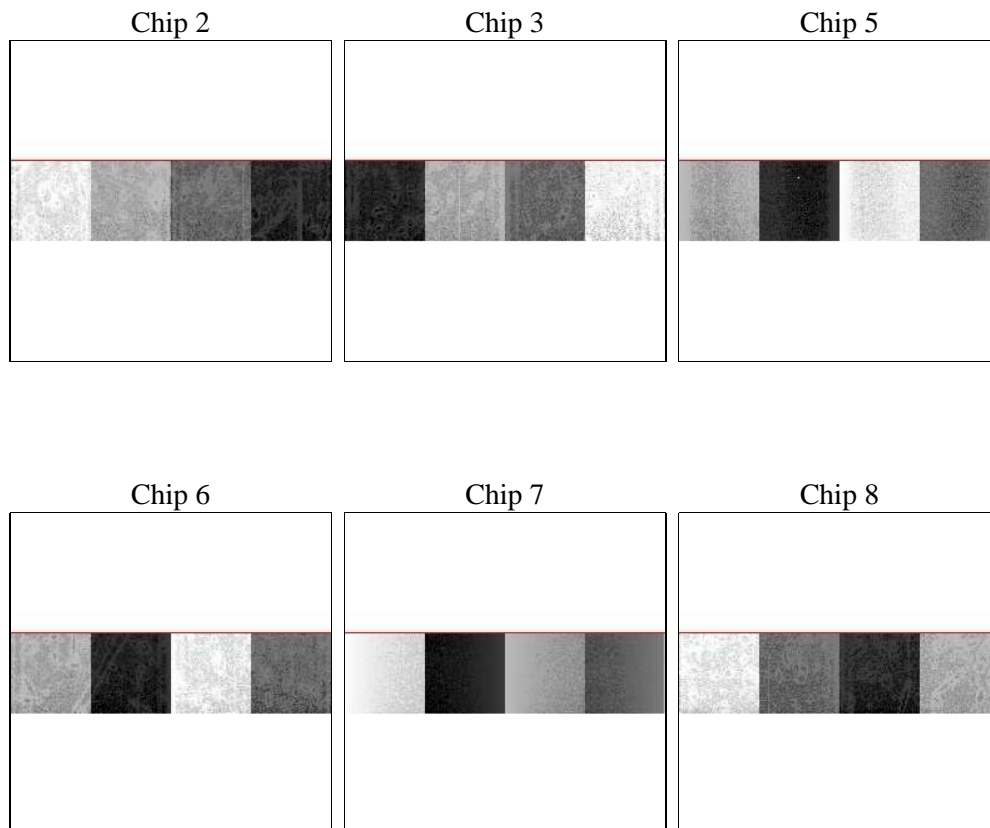
## 2 OBI

### 2.1 OBI

#### 2.1.1 Images



#### 2.1.2 Bias



### 2.1.3 Parameters

obi_num	0	Obi number	sched_exp_time	14000.000000	[s] Scheduled observation exposure time
ascdsver	8.4.3.1	Processing system revision	ontime	14174.599923164	Sum of GTIs [s]
caldbver	4.4.9	&#160	ontime2	14174.599923164	Sum of GTIs [s]
date	2012-04-01T05:04:35	Date and time of file creation	ontime3	14174.599923164	Sum of GTIs [s]
revision	2	Processing version of data	ontime5	14174.599923164	Sum of GTIs [s]
			ontime6	14174.599923164	Sum of GTIs [s]
			ontime7	14174.599923164	Sum of GTIs [s]
			ontime8	14173.458883196	Sum of GTIs [s]
			l1events	272606	Number of level 1 events

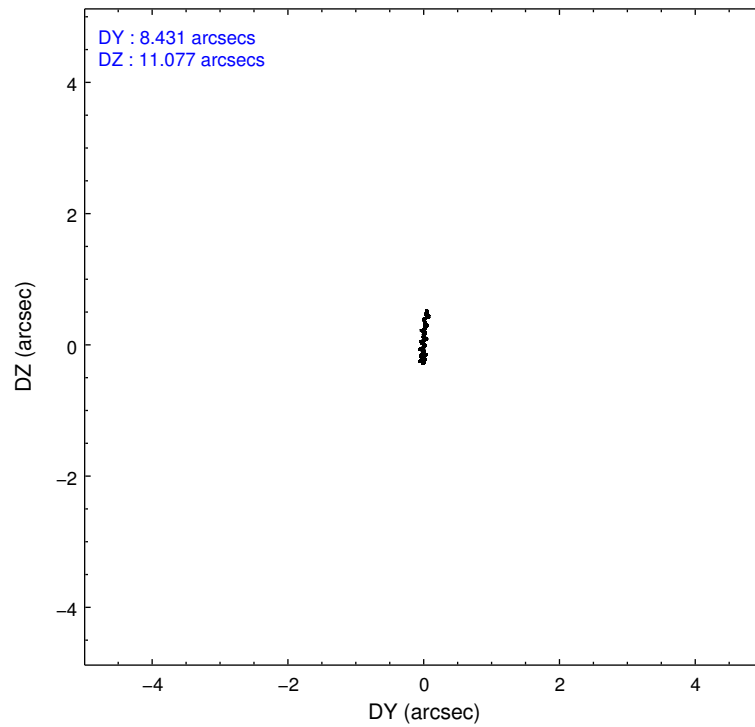
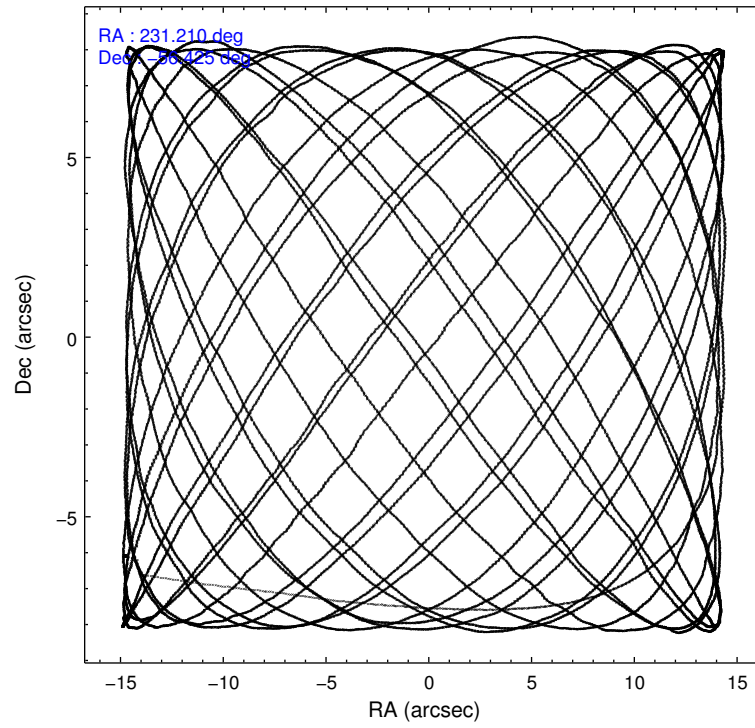
### 2.1.4 Events

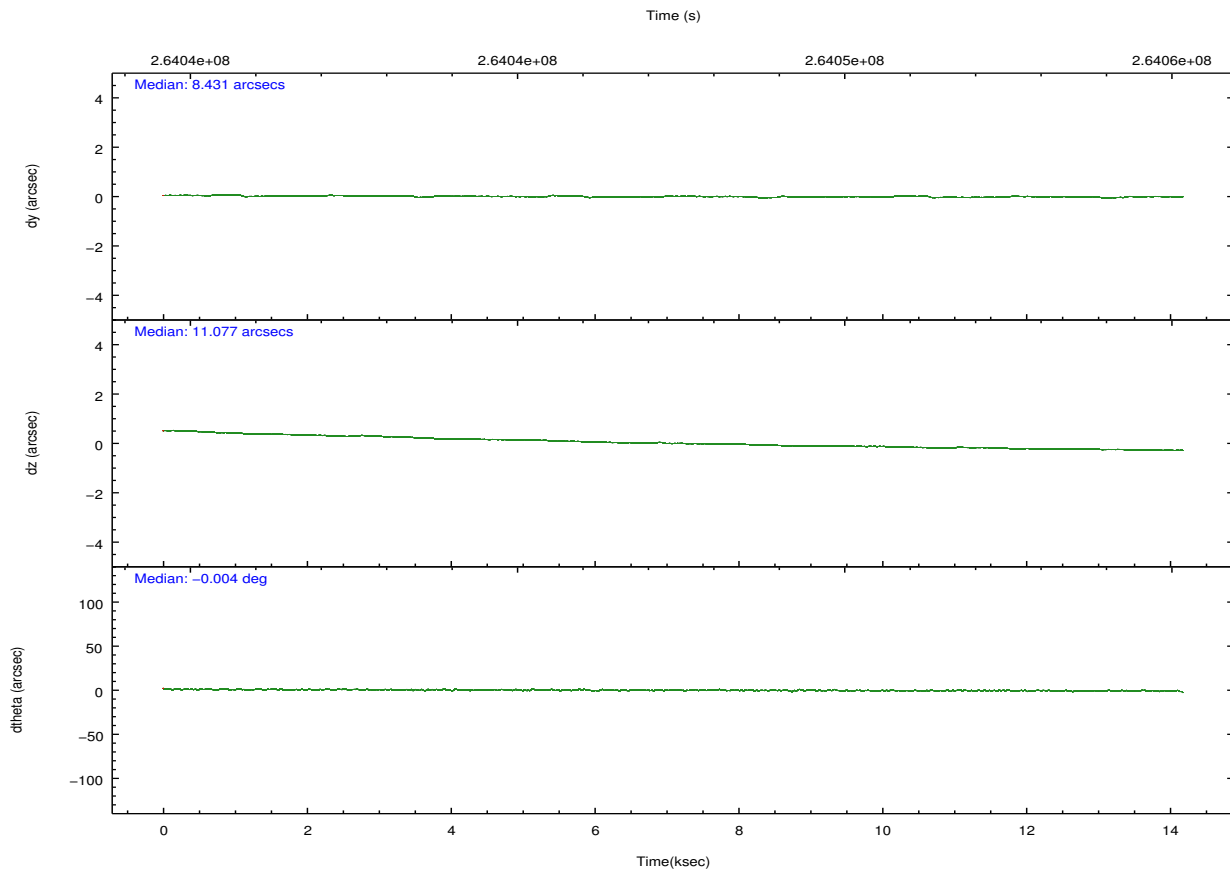
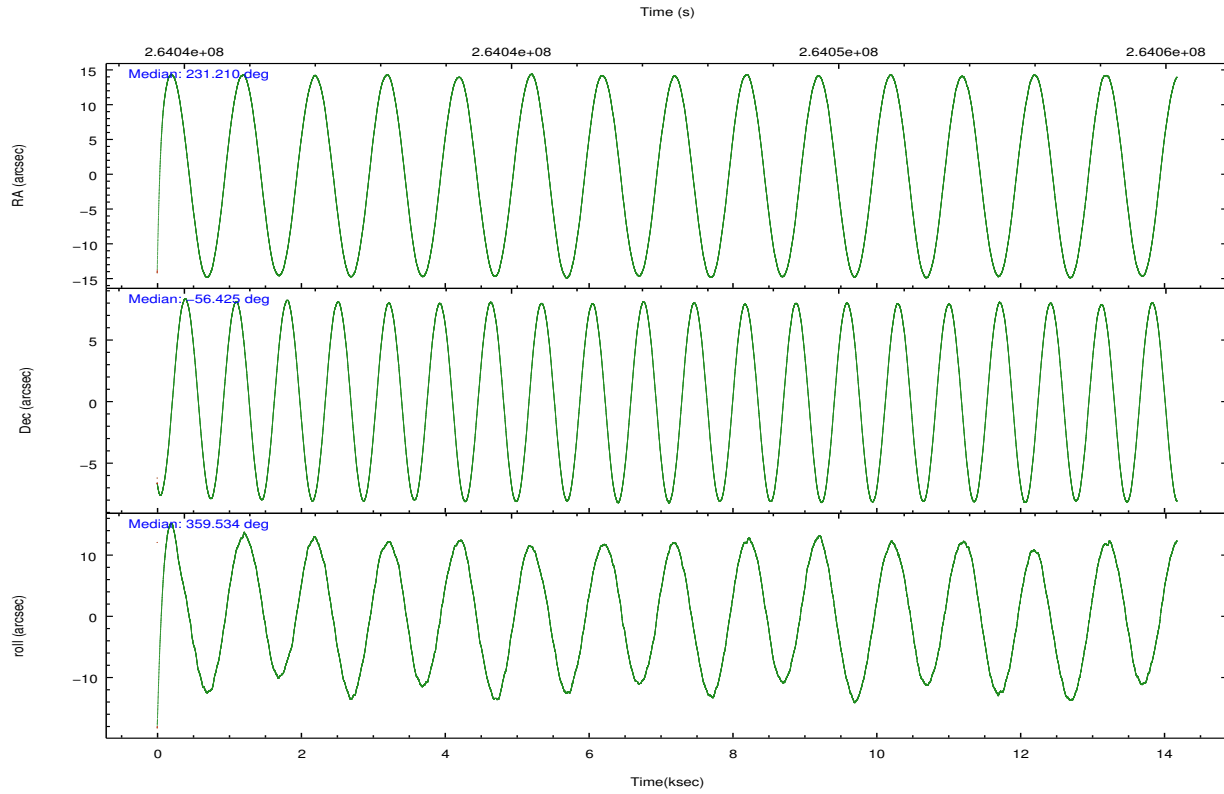
	ccd 2	ccd 3	ccd 5	ccd 6	ccd 7	ccd 8		ccd 2	ccd 3	ccd 5	ccd 6	ccd 7	ccd 8
level 1 events	40708	36372	60419	38293	46270	50544	grade 0 events	1798	1799	11969	1639	1974	3019
rejected events	36286	32156	28110	33998	26997	40571		4%	4%	19%	4%	4%	5%
rejected %	89%	88%	46%	88%	58%	80%	grade 1 events	16	15	80	17	49	15
								0%	0%	0%	0%	0%	0%
							grade 2 events	922	739	7036	846	3995	2203
								2%	2%	11%	2%	8%	4%
							grade 3 events	600	606	1281	588	2050	1130
								1%	1%	2%	1%	4%	2%
							grade 4 events	579	533	1310	551	2074	1054
								1%	1%	2%	1%	4%	2%
							grade 5 events	1313	1418	4098	1575	4367	1974
								3%	3%	6%	4%	9%	3%
							grade 6 events	692	688	11804	828	9864	2989
								1%	1%	19%	2%	21%	5%
							grade 7 events	34788	30574	22841	32249	21897	38160
								85%	84%	37%	84%	47%	75%

## 2.2 Compared Parameters

Parameter	Planned	Actual	Parameter	Planned	Actual
Instrument	ACIS	ACIS	Obspar format version number	7	7
Detector	ACIS-235678	ACIS-235678	Obspar file type	PREDICTED	ACTUAL
Grating	NONE	NONE	Obspar update status	NONE	UPDATED
Data mode	VFAINT	VFAINT	Number of optional ACIS chips dropped	0	0
Observation mode	POINTING	POINTING	On-chip summing requested	N	N
[deg] Pointing RA	231.167611	231.2101827580927	Subarray requested	CUSTOM	1/4
[deg] Pointing Dec	-56.438594	-56.42483990550708	Subarray start row	385	385
[deg] Pointing Roll	359.348978	359.5410759999459	Subarray row count	256	256
[mm] SIM focus pos	-0.684267	-0.6828225247311905	Alternating exposures requested	N	N
[mm] SIM defocus	0	0.001444936568705701	[s] Primary exposure time	0.000000	1.1
[mm] SIM translation stage pos	-190.132523	-190.1400660498719			
[mm] SIM translation stage offset	0	0.00754346686406393			
[s] Observation start time (MET)	264040460.184000	264039431.40432			
Observation start date	2006-05-15T00:33:15	2006-05-15T00:17:11			
[s] Observation end time (MET)	264054460.184000	264055006.28005			
Observation end date	2006-05-15T04:26:35	2006-05-15T04:36:46			
Read mode	TIMED	TIMED			

## 2.3 Aspect



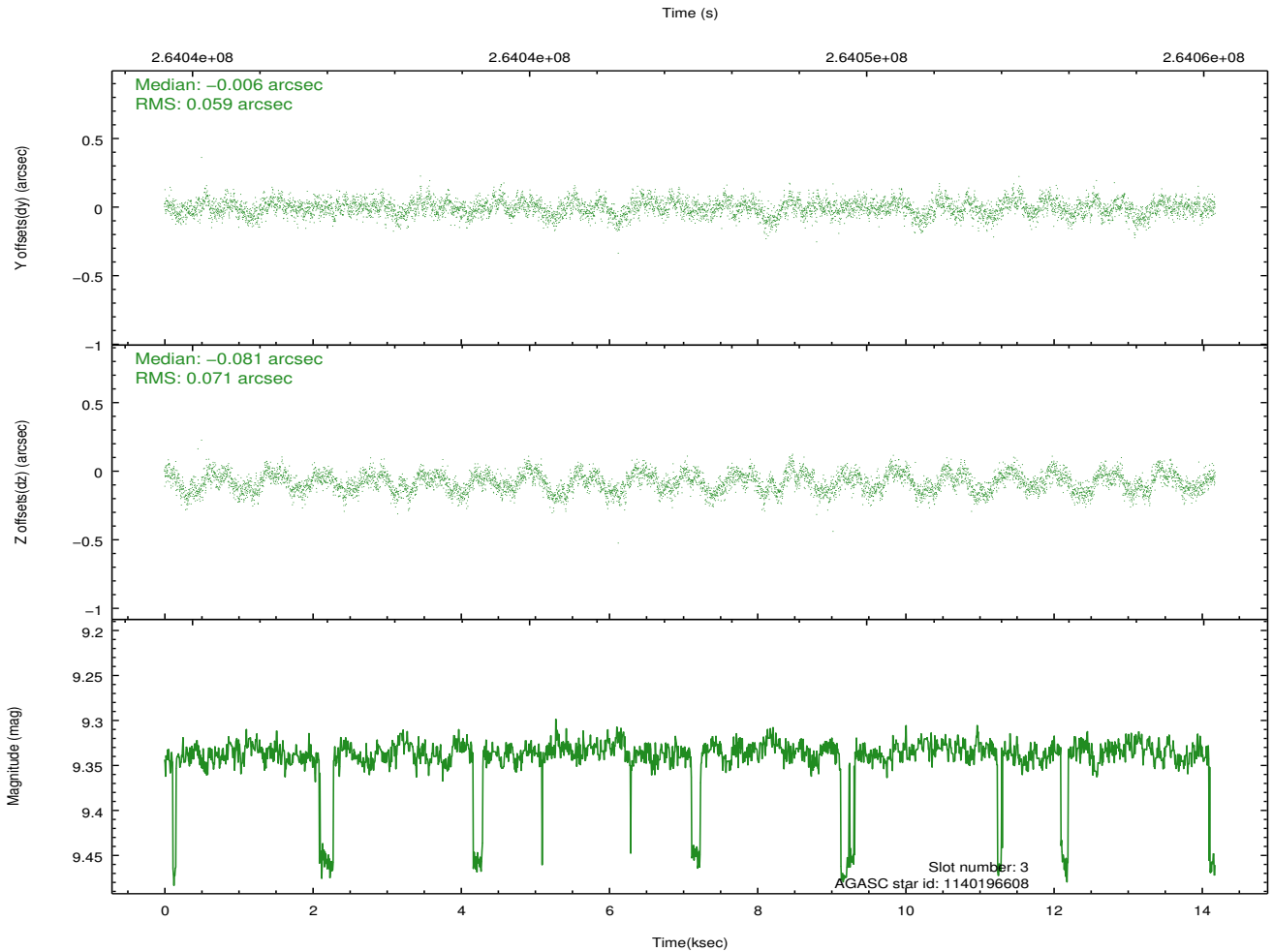
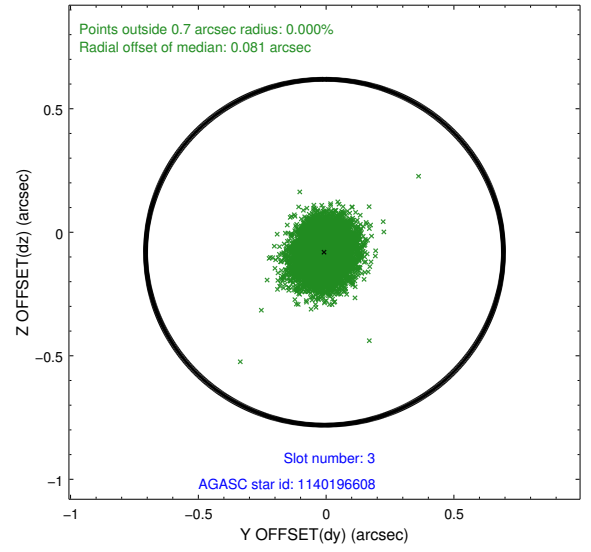
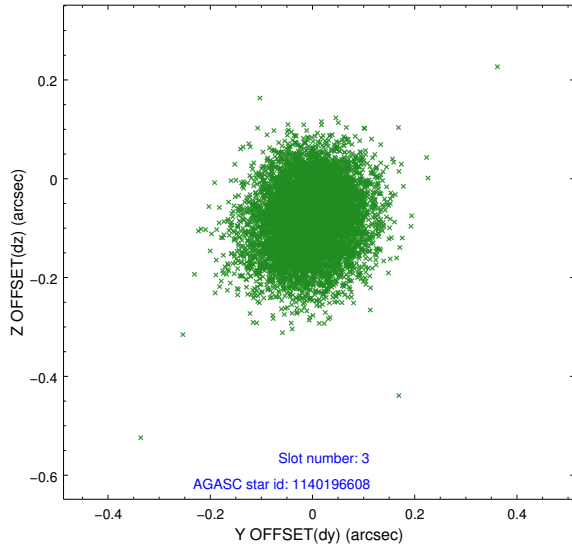


### Slot Statistics

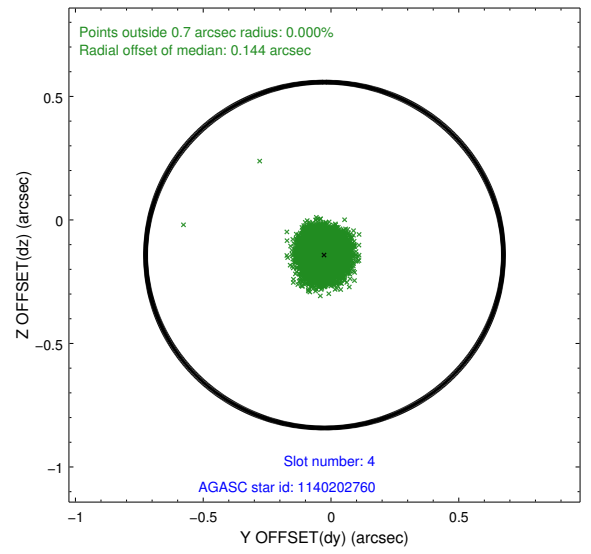
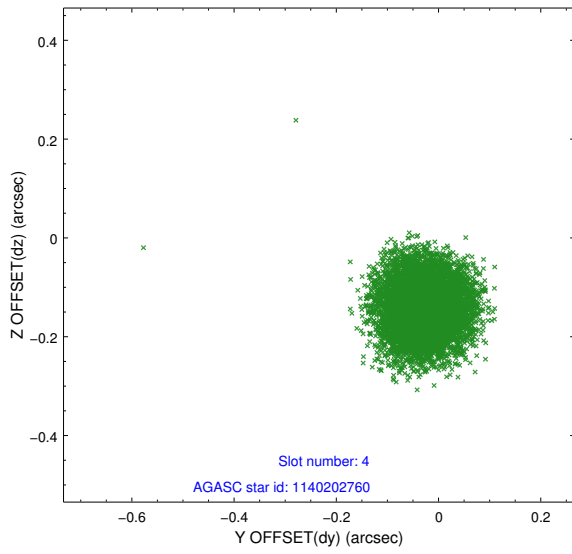
slot	status	id	mag	n_pts	med_dy	med_dz	dr1	dr2	ra	dec	mean_y	mean_z
0	FID	ACIS-S-2	7.11	3459	-0.064	-0.044	0.008	0.014	0.000000	0.000000	-761.28	-1732.44
1	FID	ACIS-S-4	7.21	3459	0.071	0.027	0.007	0.010	0.000000	0.000000	2151.97	175.79
2	FID	ACIS-S-6	7.35	3459	-0.035	0.024	0.008	0.012	0.000000	0.000000	401.14	813.54
3	GUIDE	1140196608	9.34	6881	-0.006	-0.081	0.099	0.155	230.357400	-56.203265	-1631.97	818.95
4	GUIDE	1140202760	8.50	6917	-0.025	-0.142	0.073	0.113	231.925197	-55.796534	1506.68	2320.62
5	GUIDE	1140723840	8.59	6912	-0.000	-0.025	0.079	0.124	230.379592	-56.994965	-1521.57	-2028.92
6	GUIDE	1140724800	9.25	6848	0.069	0.163	0.134	0.212	230.661462	-57.060426	-964.98	-2253.51
7	GUIDE	1140726128	7.86	6915	-0.030	0.091	0.075	0.117	231.437568	-57.014209	552.99	-2067.13

## 2.4 Star Slots

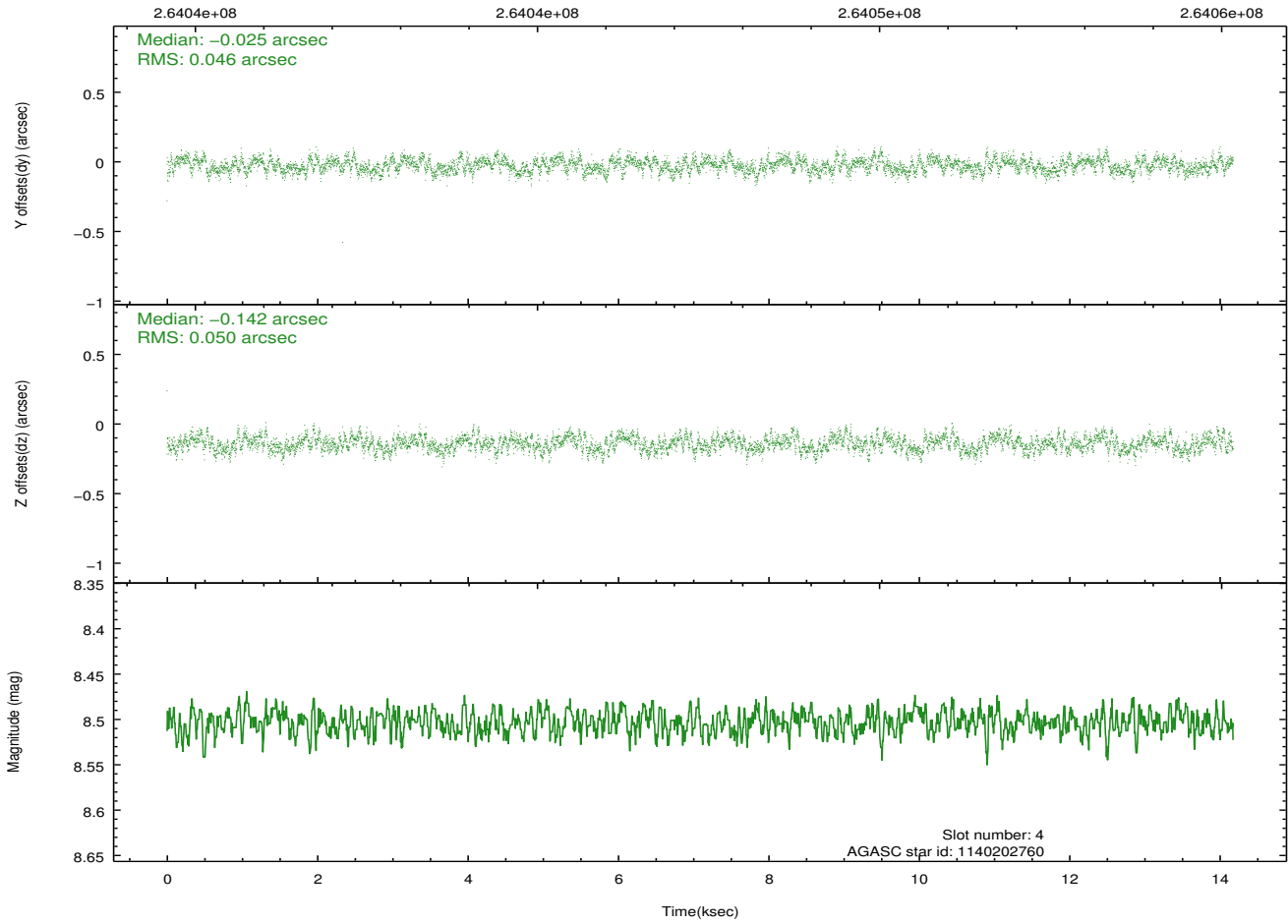
### 2.4.1 Slot 3



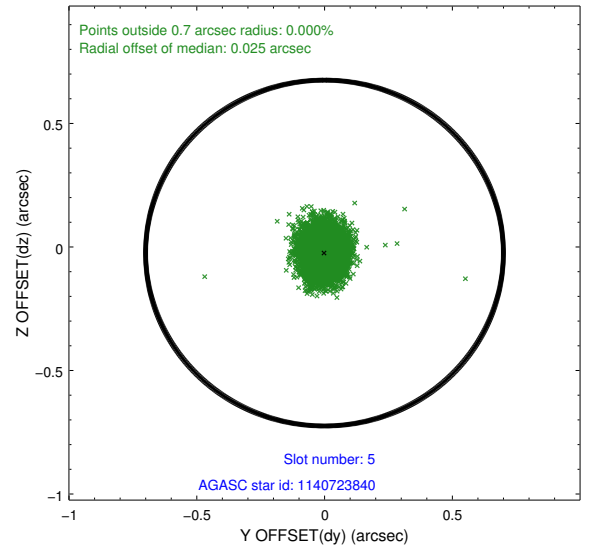
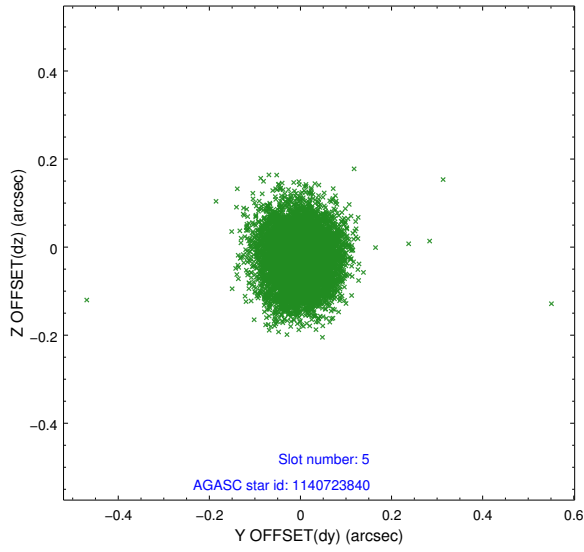
### 2.4.2 Slot 4



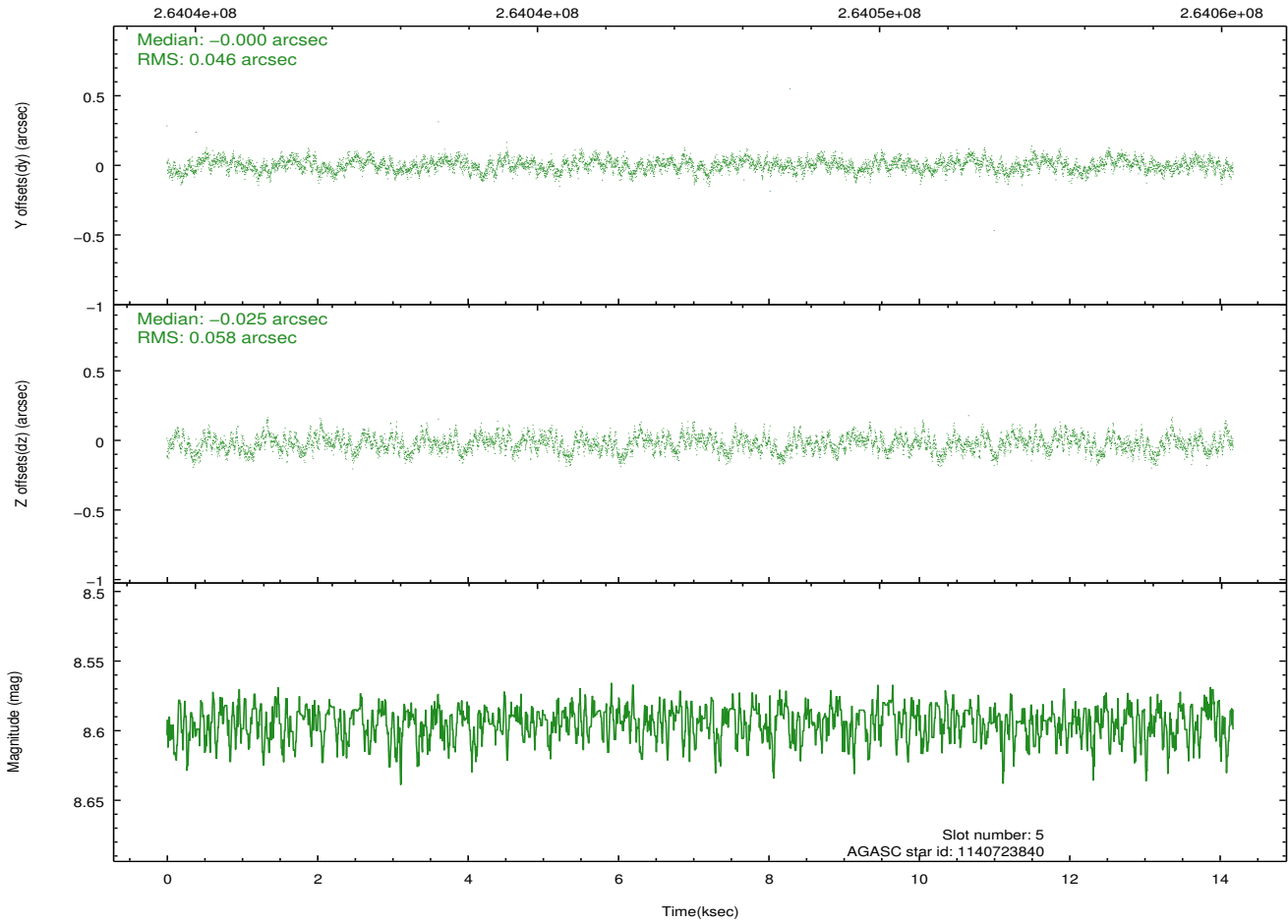
Time (s)



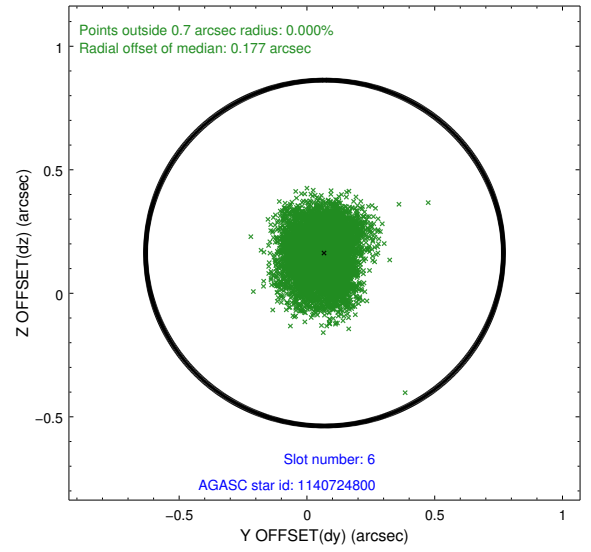
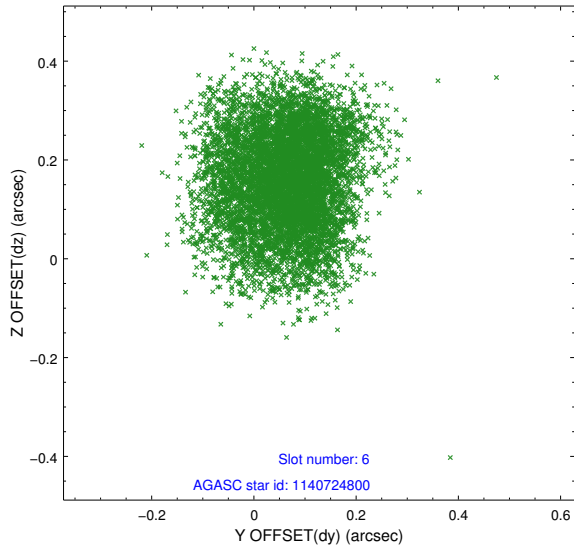
### 2.4.3 Slot 5



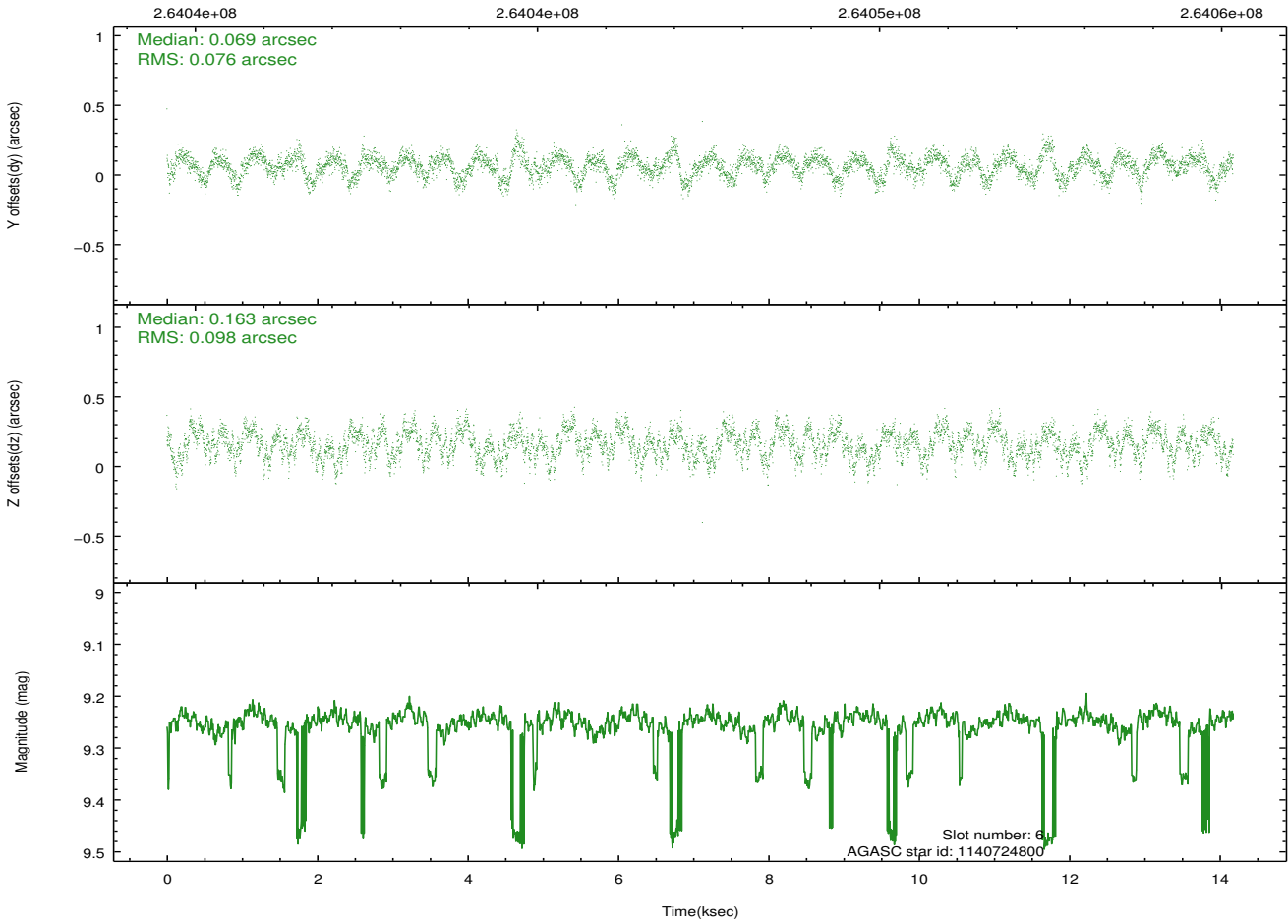
Time (s)



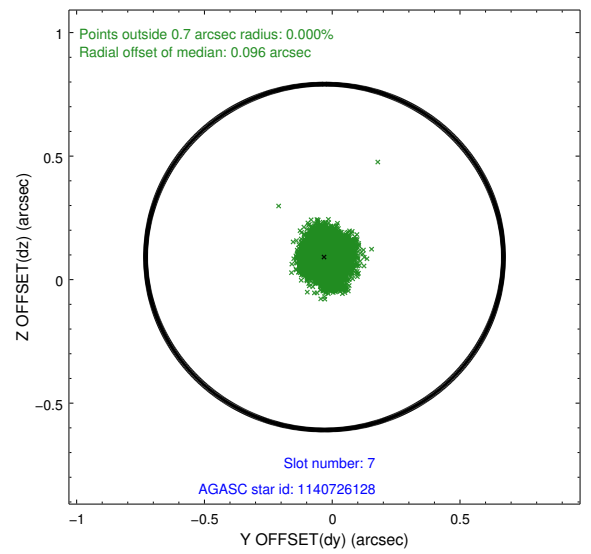
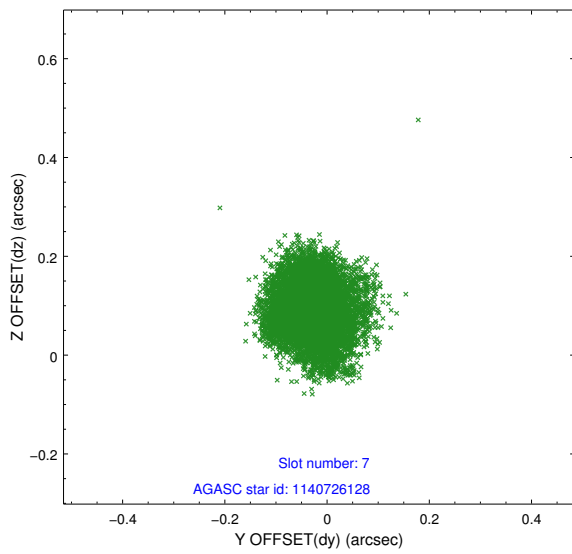
### 2.4.4 Slot 6



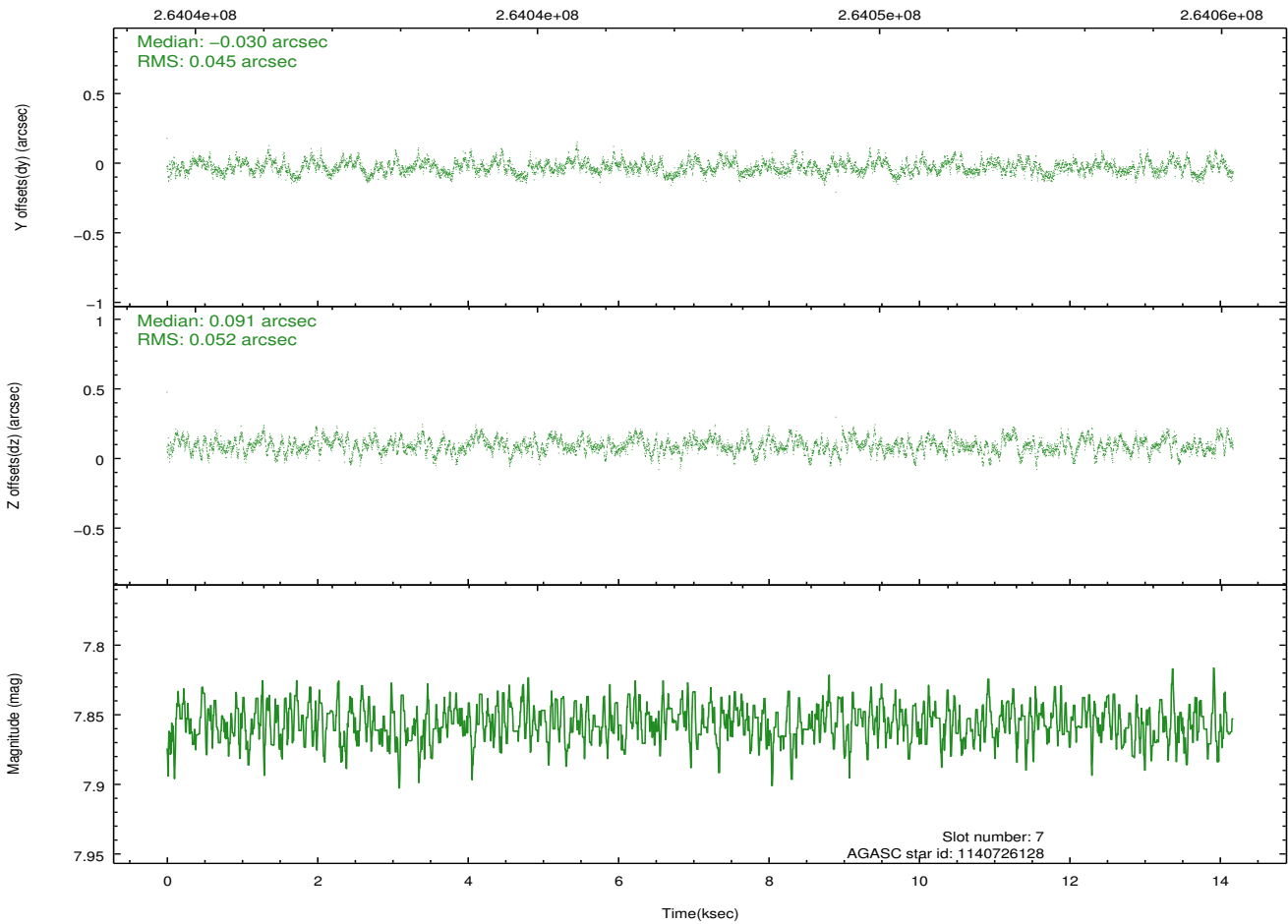
Time (s)



### 2.4.5 Slot 7

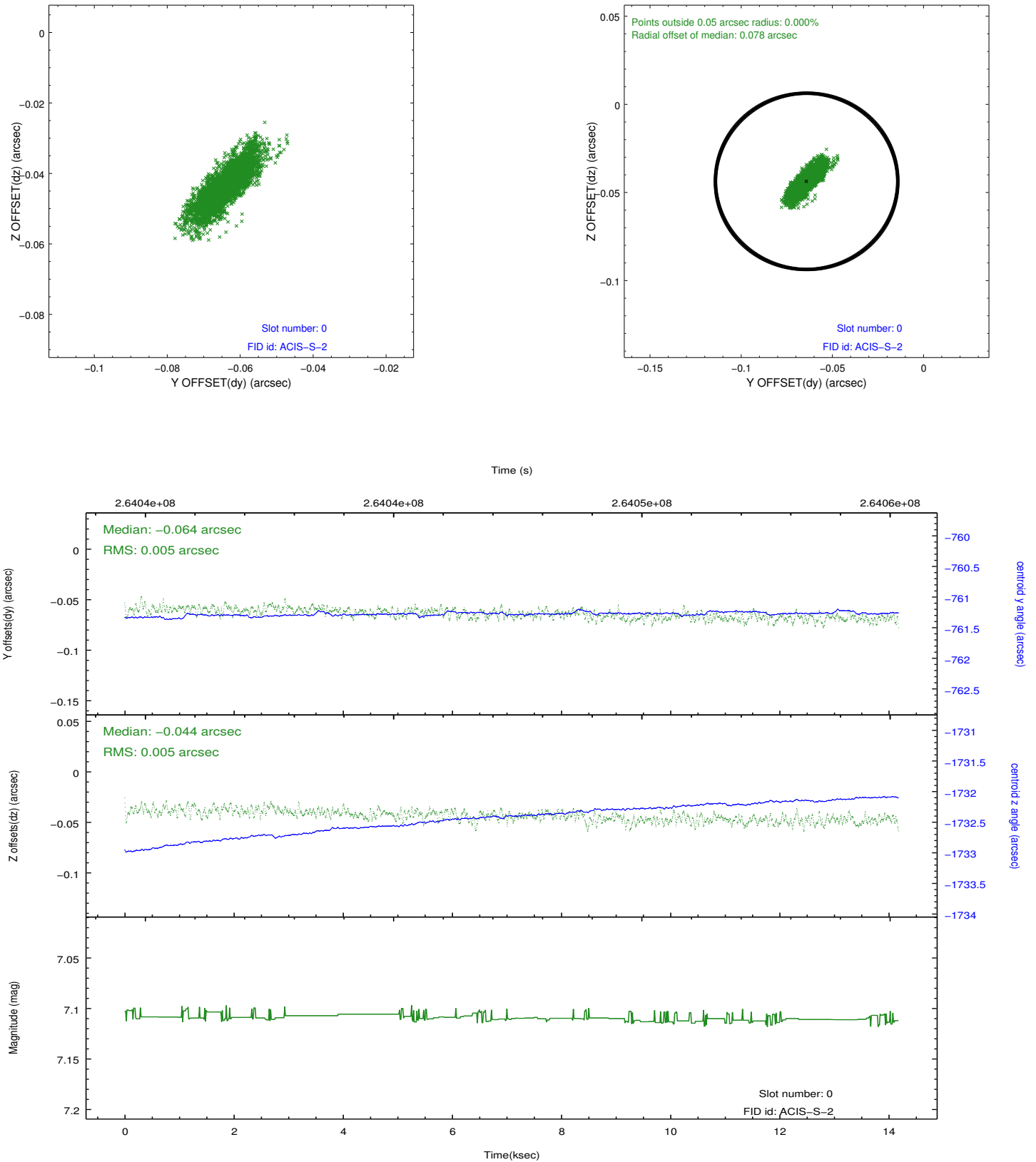


Time (s)

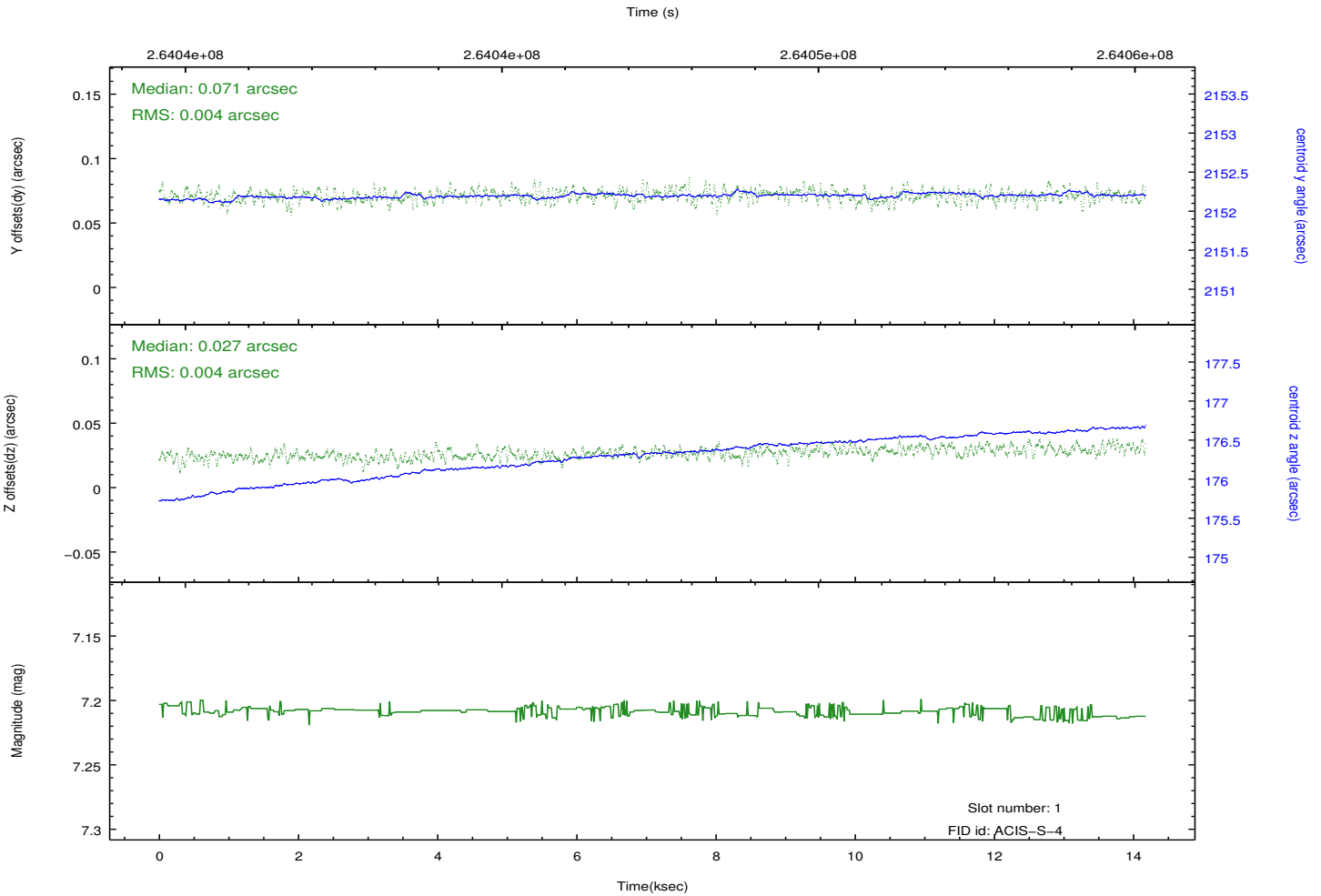
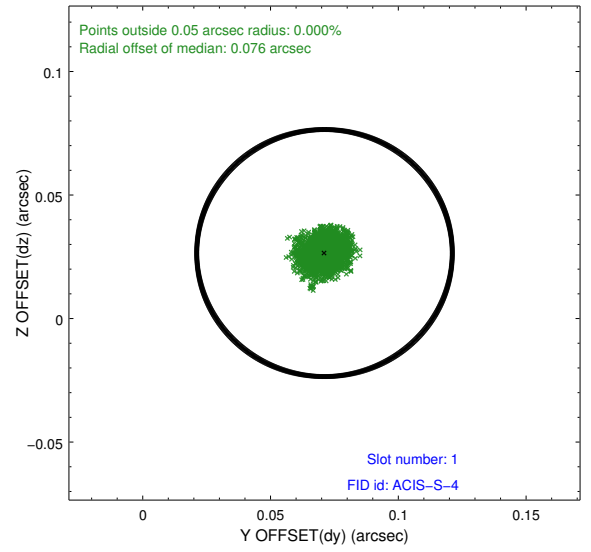
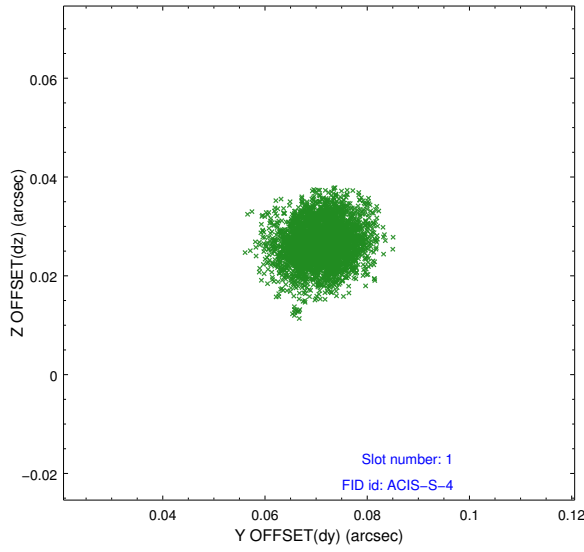


## 2.5 FID Slots

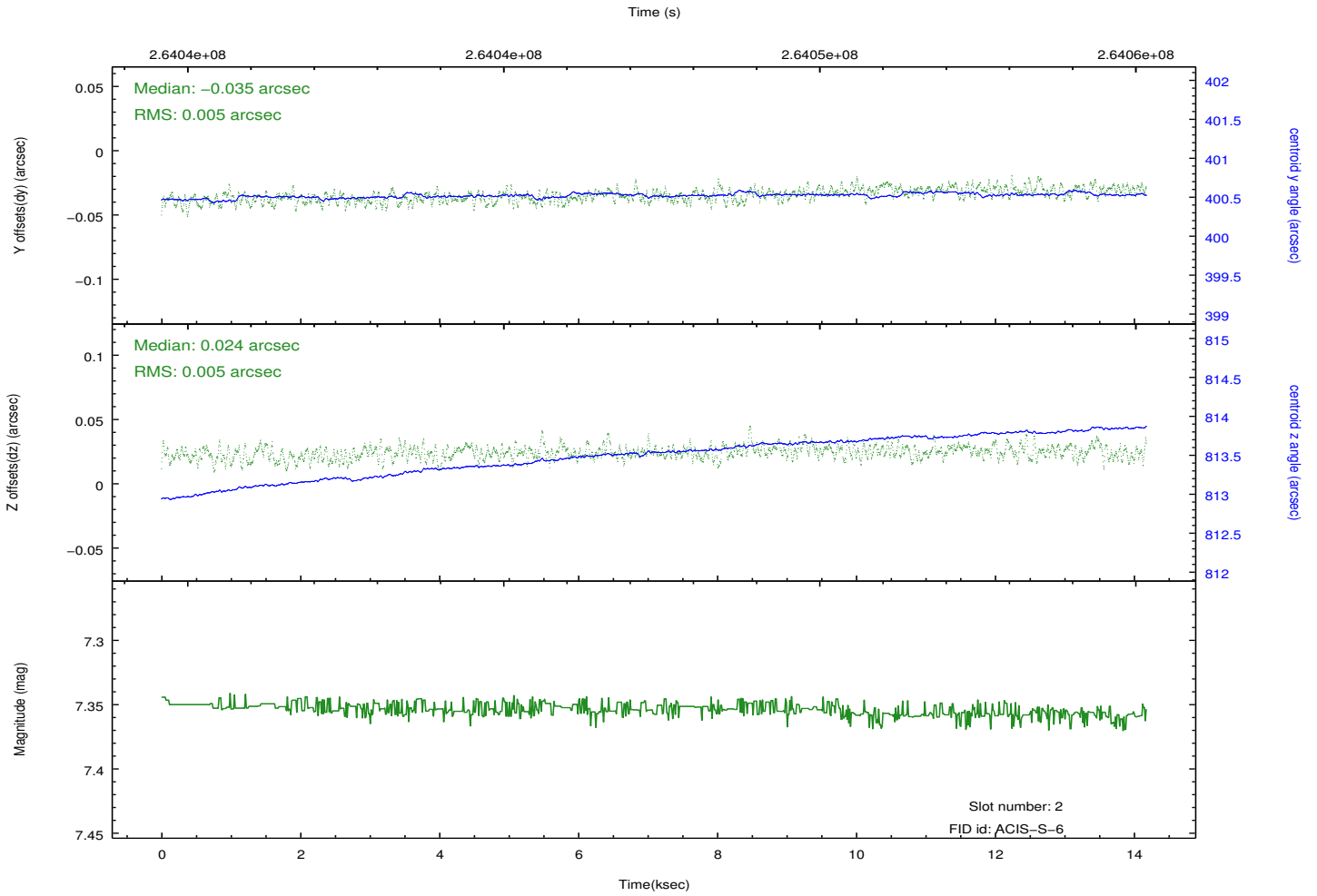
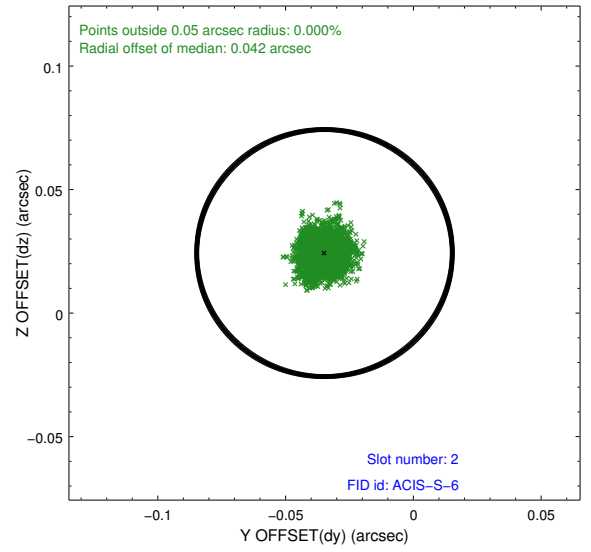
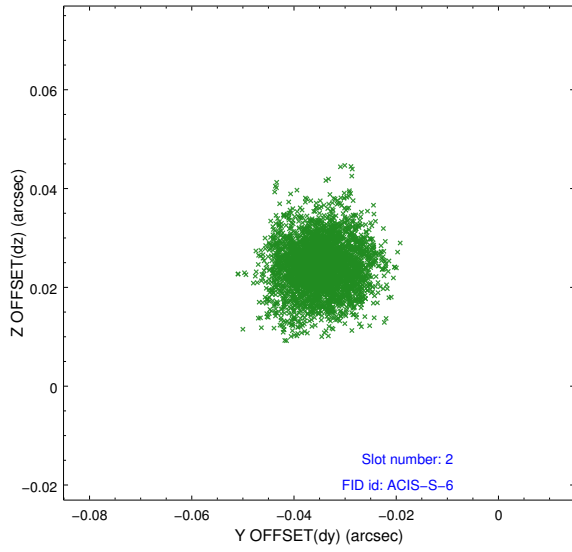
### 2.5.1 Slot 0



## 2.5.2 Slot 1



### 2.5.3 Slot 2



## A Summary

### A.1 Status

V&V Scientist	Jen Lauer
V&V Date (YYYY-MM-DD)	2012.04.03
V&V Edition	1
V&V Disposition and Status	OK
V&V Charge Time	14.1745999

### A.2 Comments