

V&V Reference Report

L2 ASCDS Version : 8.4.3

Observation 6767 - L2 Version 2
Chandra X-Ray Center

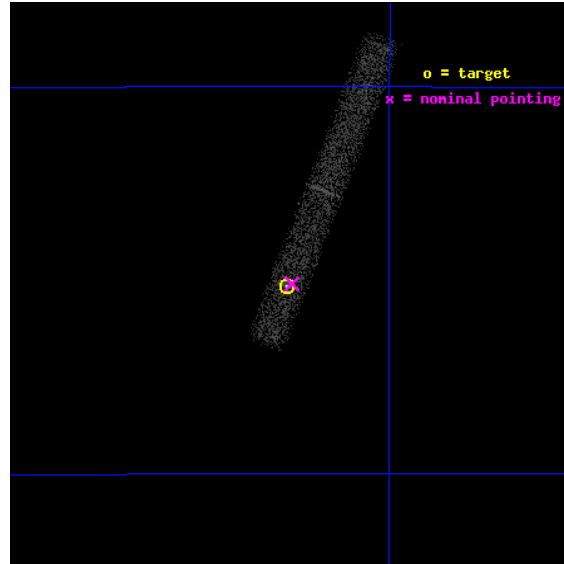
L2 Processing Date : Mar 25 2012

Contents

1	Front	2
2	OBI	3
2.1	OBI	3
2.1.1	Images	3
2.1.2	Bias	3
2.1.3	Parameters	4
2.1.4	Events	4
2.2	Compared Parameters	5
2.3	Aspect	6
2.4	Star Slots	9
2.4.1	Slot 3	9
2.4.2	Slot 4	10
2.4.3	Slot 5	11
2.4.4	Slot 6	12
2.4.5	Slot 7	13
2.5	FID Slots	14
2.5.1	Slot 0	14
2.5.2	Slot 1	15
2.5.3	Slot 2	16
A	Summary	17
A.1	Status	17
A.2	Comments	17

1 Front

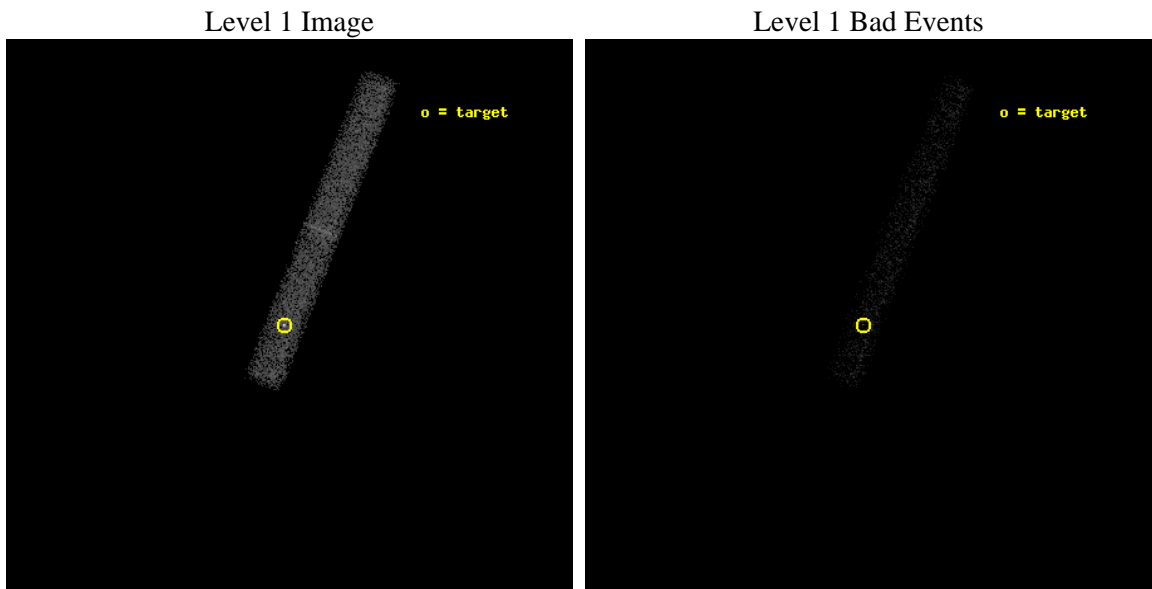
seq_num	590450	Sequence number
obs_id	6767	Observation id
title	AO7 Calibration Observation of PSR J0437-4715 to Improve the Calibration of Pile-up in ACIS-S Images	Proposal title
observer	Dr. CXC Calibration	Principal investigator
object	PSR J0437-4715	Source name
dtcycle	0	
cycle	P	events from which exps? Prim/Second/Both
ra_targ	69.315833	Observer's specified target RA [deg]
dec_targ	-47.252333	Observer's specified target Dec [deg]
ra_nom	69.312763666984	Nominal RA [deg]
dec_nom	-47.251584395829	Nominal Dec [deg]
roll_nom	291.39931590989	Nominal Roll [deg]
revision	2	Processing version of data
ontime	23186.25	Sum of GTIs [s]
livetime	7819.3238344153	Livetime [s]
ontime7	23186.25	Sum of GTIs [s]
l2events	7670	Number of level 2 events



2 OBI

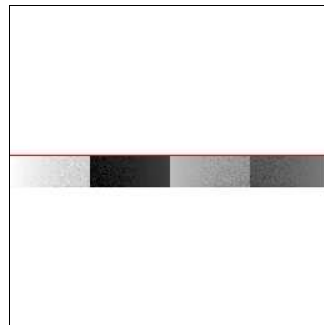
2.1 OBI

2.1.1 Images



2.1.2 Bias

Chip 7



2.1.3 Parameters

obi_num	0	Obi number	sched_exp_time	23000.000000	[s] Scheduled observation exposure time
ascdsver	8.4.3	Processing system revision	ontime	23186.25	Sum of GTIs [s]
caldbver	4.4.8	 	ontime7	23186.25	Sum of GTIs [s]
date	2012-03-25T03:28:49	Date and time of file creation	l1events	15637	Number of level 1 events
revision	2	Processing version of data			

2.1.4 Events

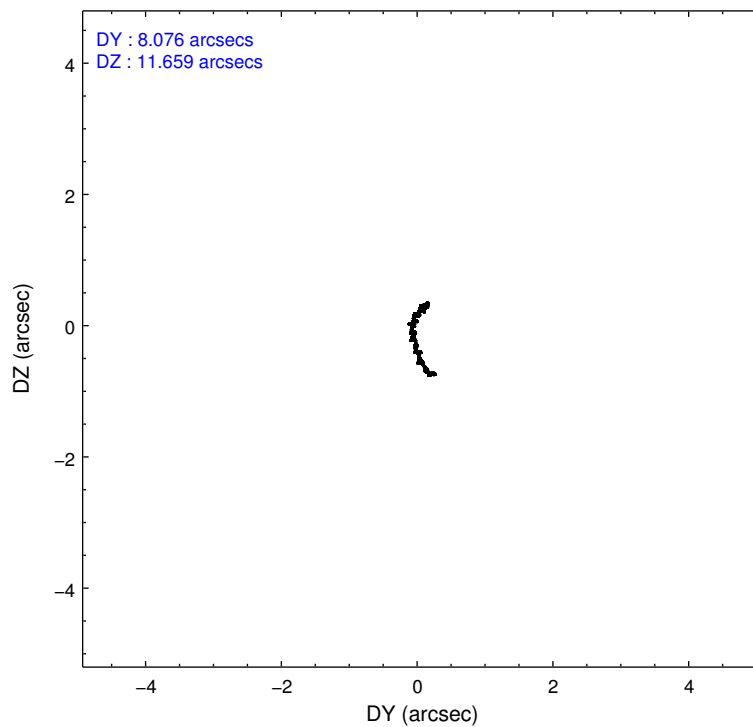
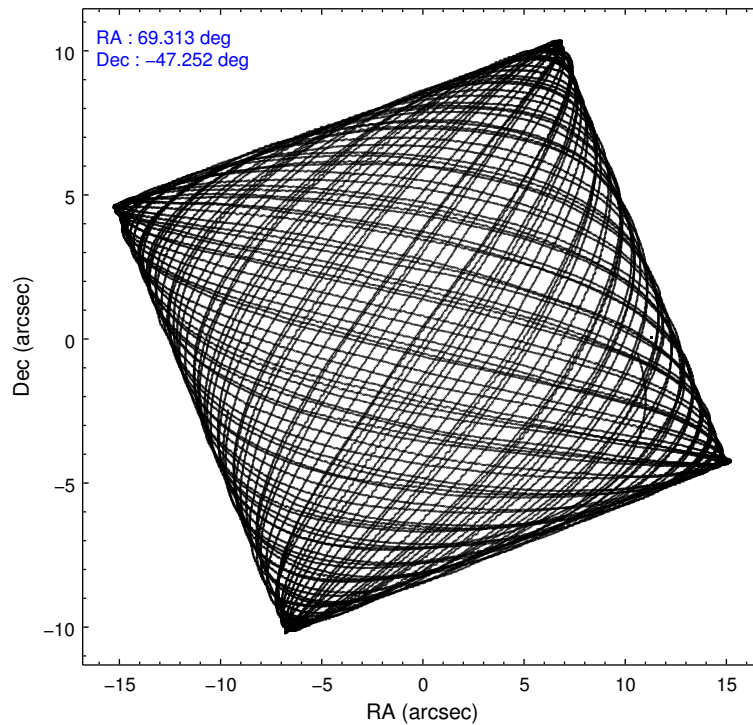
	ccd 7
level 1 events	15637
rejected events	7629
rejected %	48%

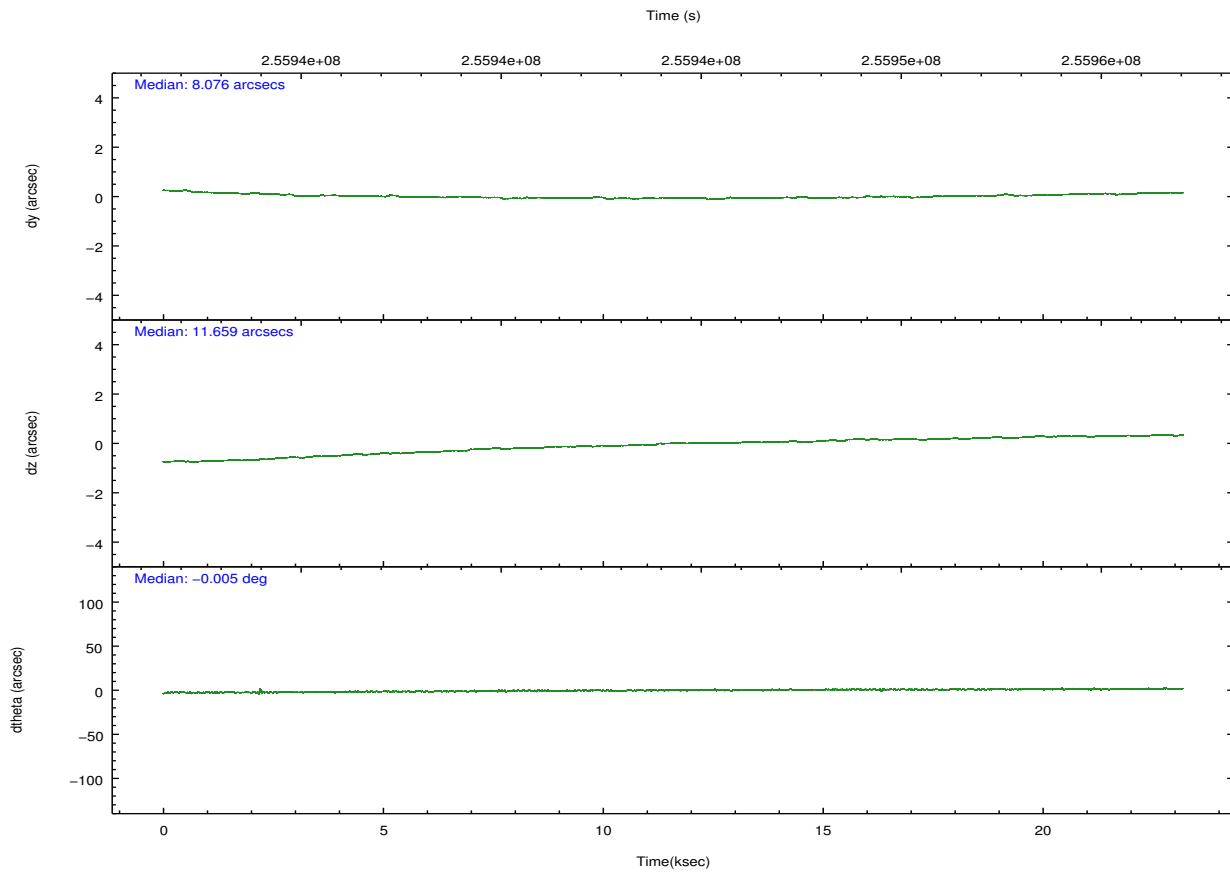
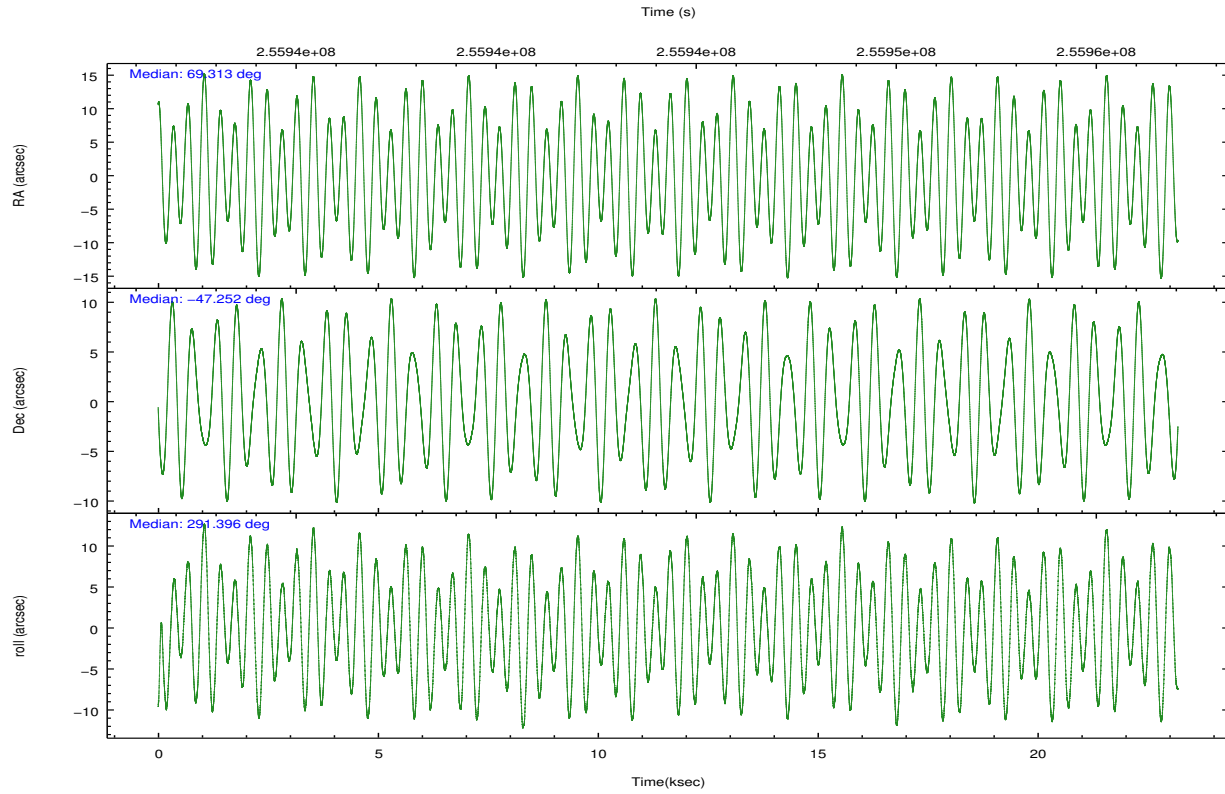
	ccd 7
grade 0 events	1544
	9%
grade 1 events	23
	0%
grade 2 events	1590
	10%
grade 3 events	1192
	7%
grade 4 events	1064
	6%
grade 5 events	1173
	7%
grade 6 events	2739
	17%
grade 7 events	6312
	40%

2.2 Compared Parameters

Parameter	Planned	Actual	Parameter	Planned	Actual
Instrument	ACIS	ACIS	Obspar format version number	7	7
Detector	ACIS-7	ACIS-7	Obspar file type	PREDICTED	ACTUAL
Grating	NONE	NONE	Obspar update status	NONE	UPDATED
Data mode	VFAINT	VFAINT	Number of optional ACIS chips dropped	0	0
Observation mode	POINTING	POINTING	On-chip summing requested	N	N
[deg] Pointing RA	69.281076	69.31276366698411	Subarray requested	CUSTOM	CUSTOM
[deg] Pointing Dec	-47.234862	-47.25158439582933	Subarray start row	447	447
[deg] Pointing Roll	291.219440	291.3993159098927	Subarray row count	101	101
[s] Window start time (MET)	250992064.184000	250992064.184000	Alternating exposures requested	N	N
[s] Window stop time (MET)	257472065.184000	257472065.184000	[s] Primary exposure time	0.000000	0.2
[mm] SIM focus pos	-0.684267	-0.6828225247311905			
[mm] SIM defocus	0	0.001444936568705701			
[mm] SIM translation stage pos	-190.132523	-190.1400660498719			
[mm] SIM translation stage offset	0	0.00754346686406393			
[s] Observation start time (MET)	255932883.184000	255931886.02688			
Observation start date	2006-02-10T04:26:58	2006-02-10T04:11:26			
[s] Observation end time (MET)	255955883.184000	255956016.578			
Observation end date	2006-02-10T10:50:18	2006-02-10T10:53:36			
Read mode	TIMED	TIMED			

2.3 Aspect



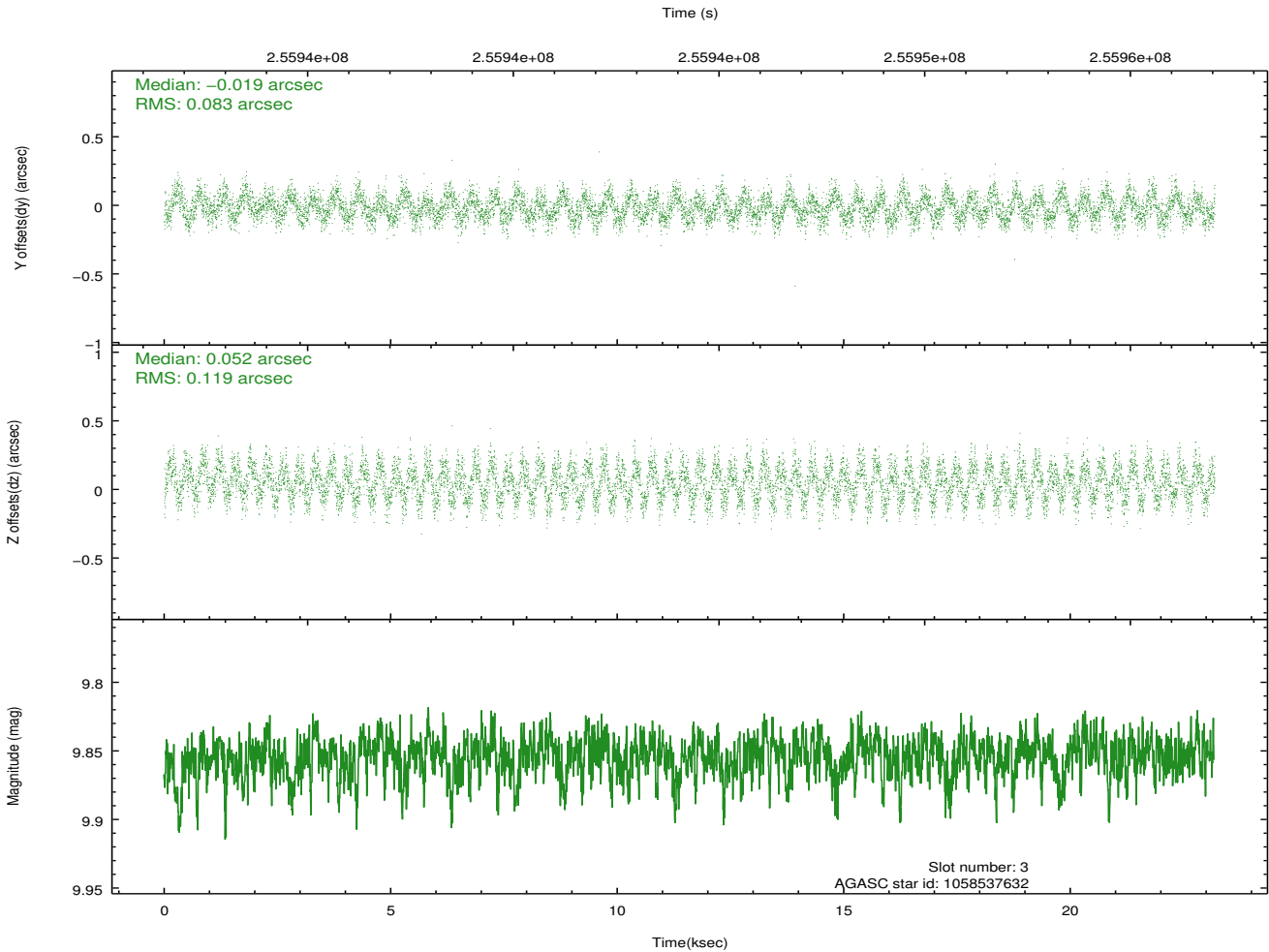
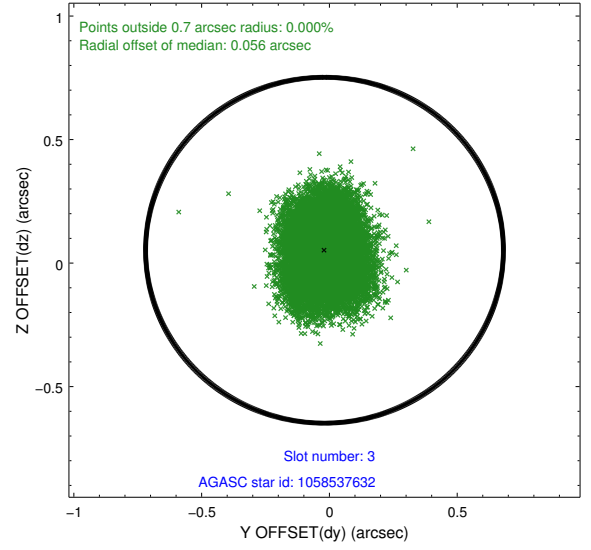
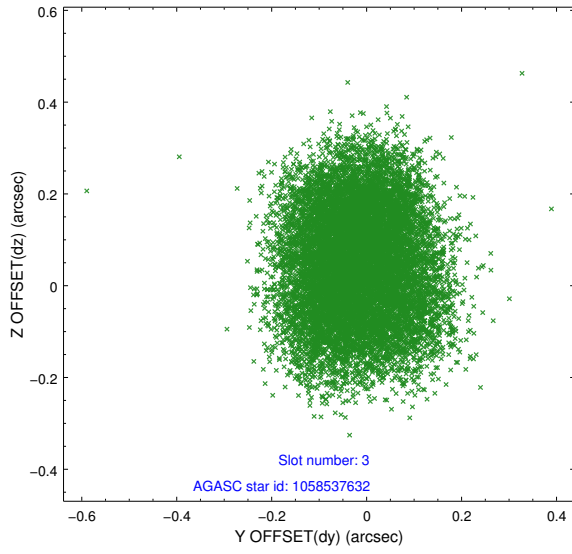


Slot Statistics

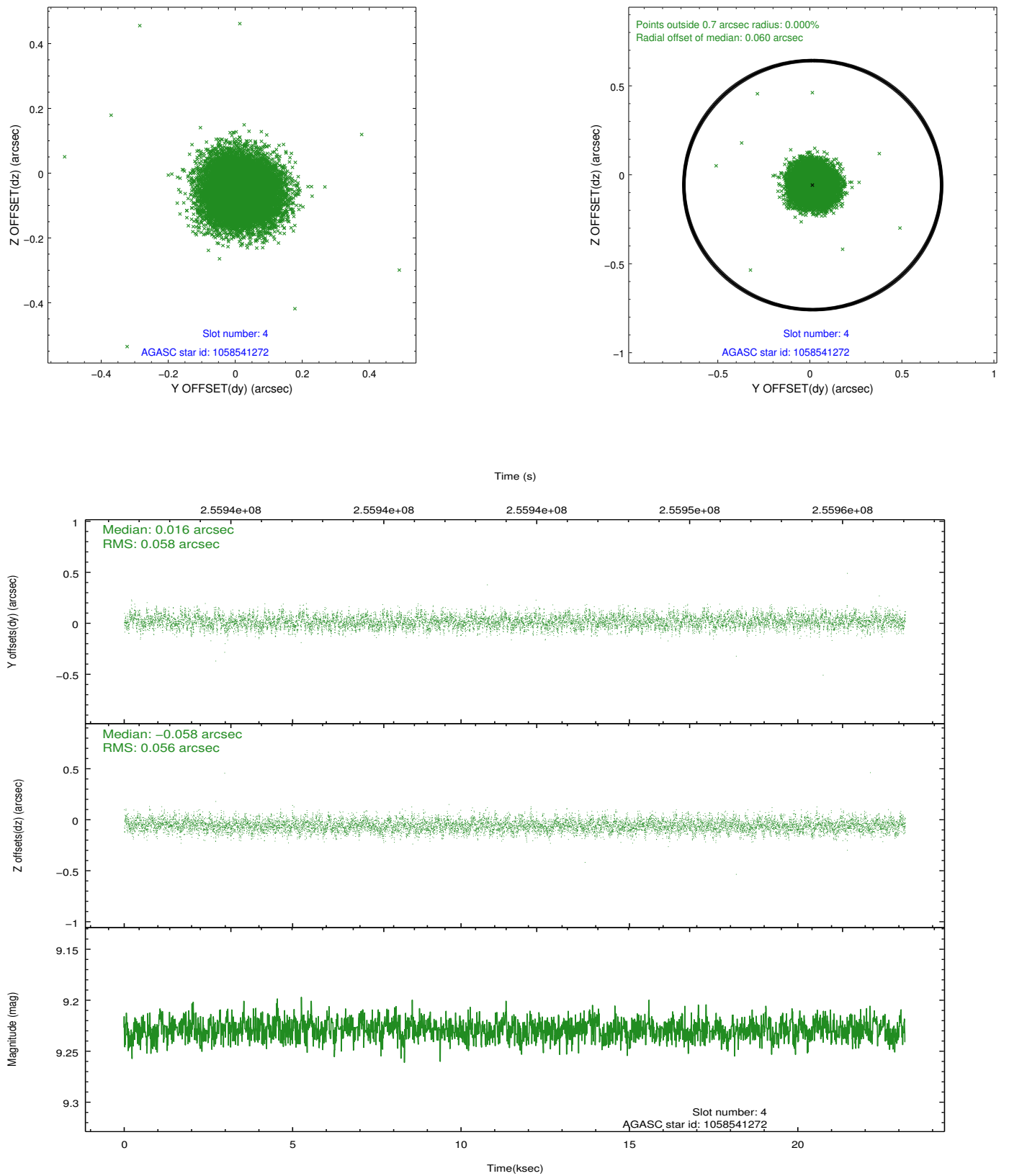
slot	status	id	mag	n_pts	med_dy	med_dz	dr1	dr2	ra	dec	mean_y	mean_z
0	FID	ACIS-S-2	7.10	5656	-0.030	-0.027	0.012	0.022	0.000000	0.000000	-760.89	-1732.88
1	FID	ACIS-S-4	7.20	5656	0.124	0.021	0.008	0.017	0.000000	0.000000	2152.46	175.53
2	FID	ACIS-S-5	7.23	5655	-0.126	0.014	0.011	0.022	0.000000	0.000000	-1813.66	169.31
3	GUIDE	1058537632	9.85	11298	-0.019	0.052	0.158	0.244	68.291617	-47.025396	-1567.01	-1995.87
4	GUIDE	1058541272	9.23	11302	0.016	-0.058	0.085	0.137	68.392275	-46.921735	-1829.89	-1633.74
5	GUIDE	1058542336	9.60	11304	-0.121	0.042	0.142	0.218	69.740954	-46.597293	-1724.82	1890.16
6	GUIDE	1058544032	8.99	11305	0.103	0.000	0.084	0.136	69.576631	-47.141596	-49.48	796.16
7	GUIDE	1058931064	9.46	11302	0.016	-0.040	0.105	0.171	69.760694	-47.722390	2060.24	446.73

2.4 Star Slots

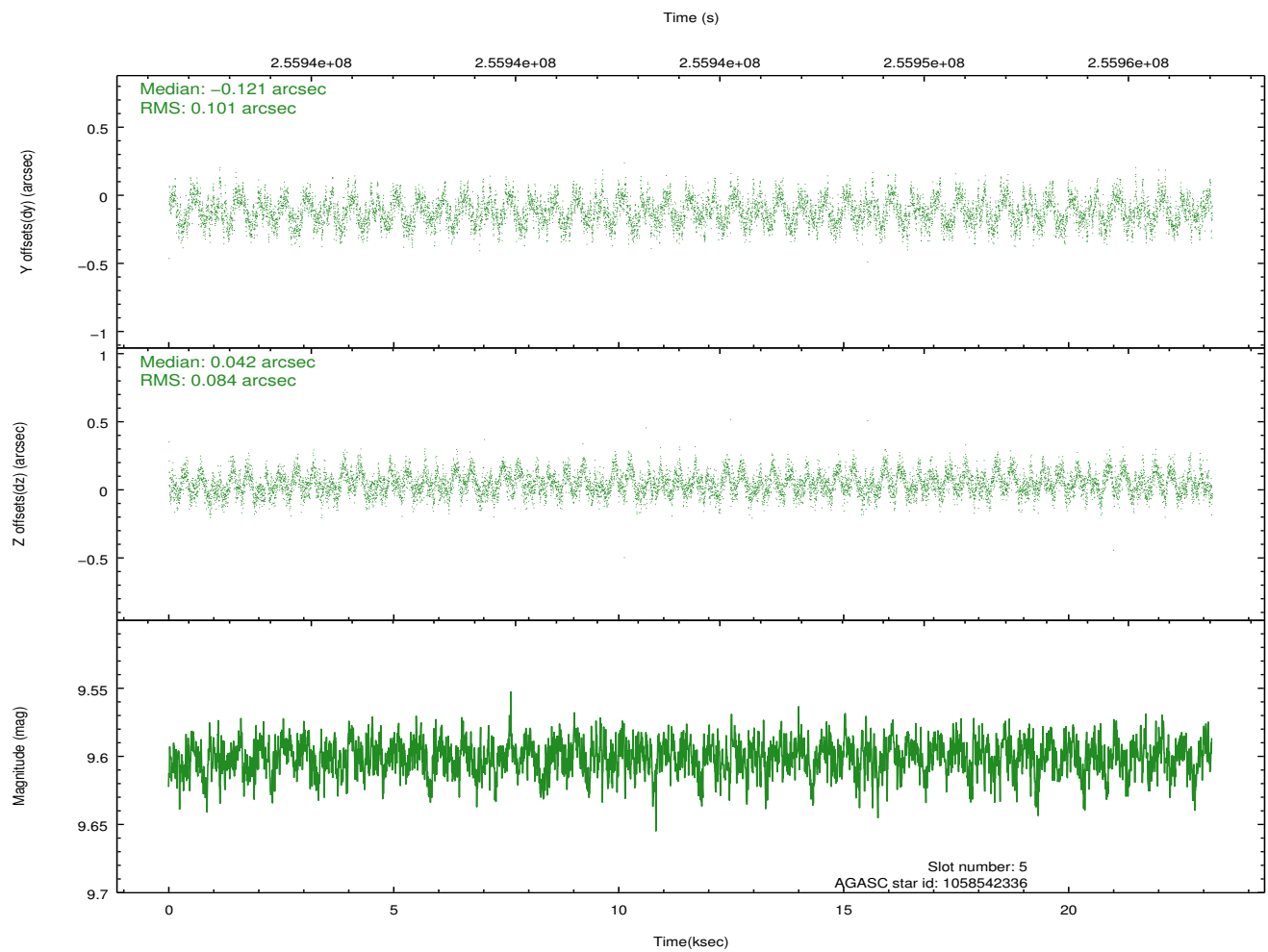
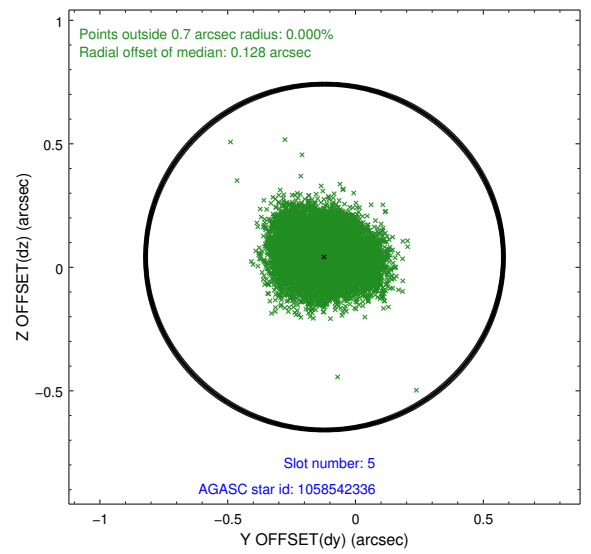
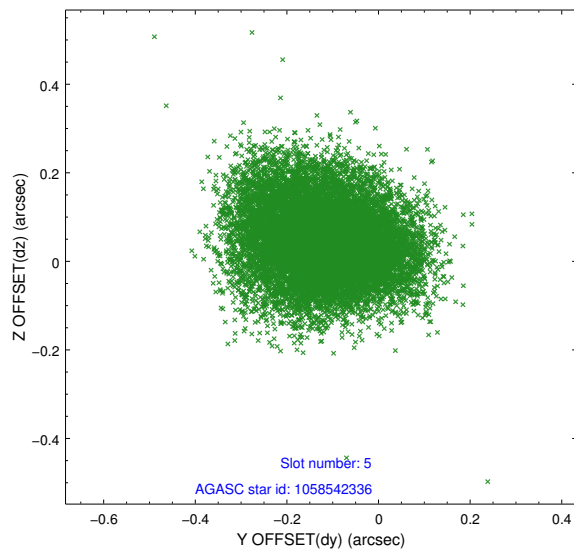
2.4.1 Slot 3



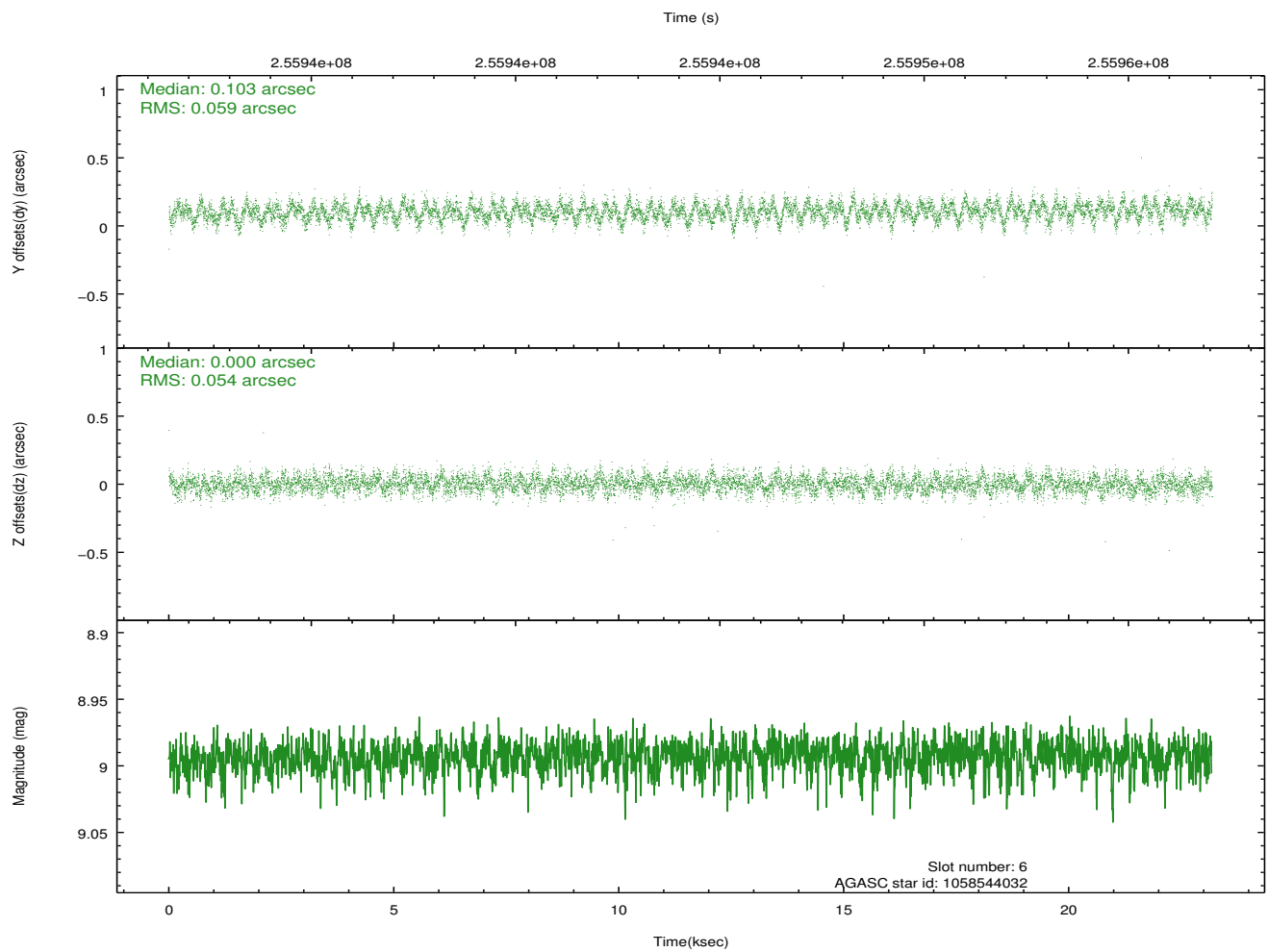
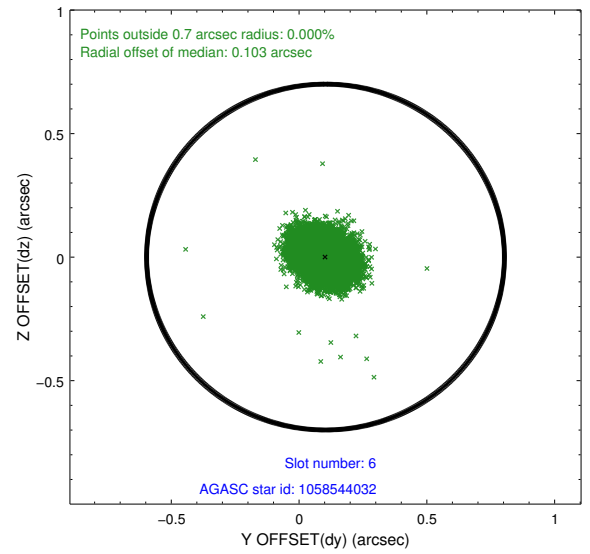
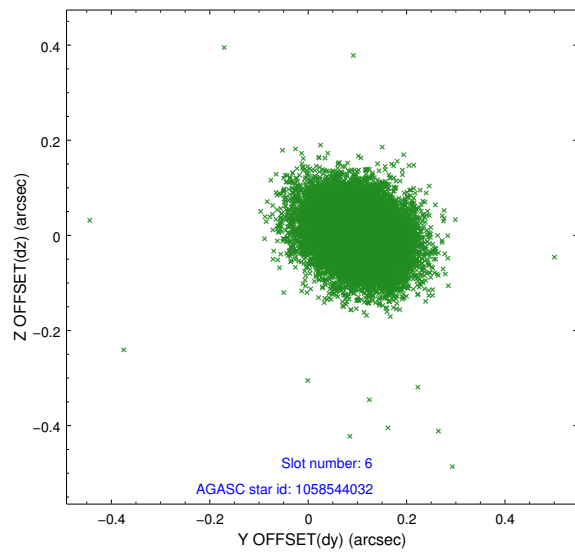
2.4.2 Slot 4



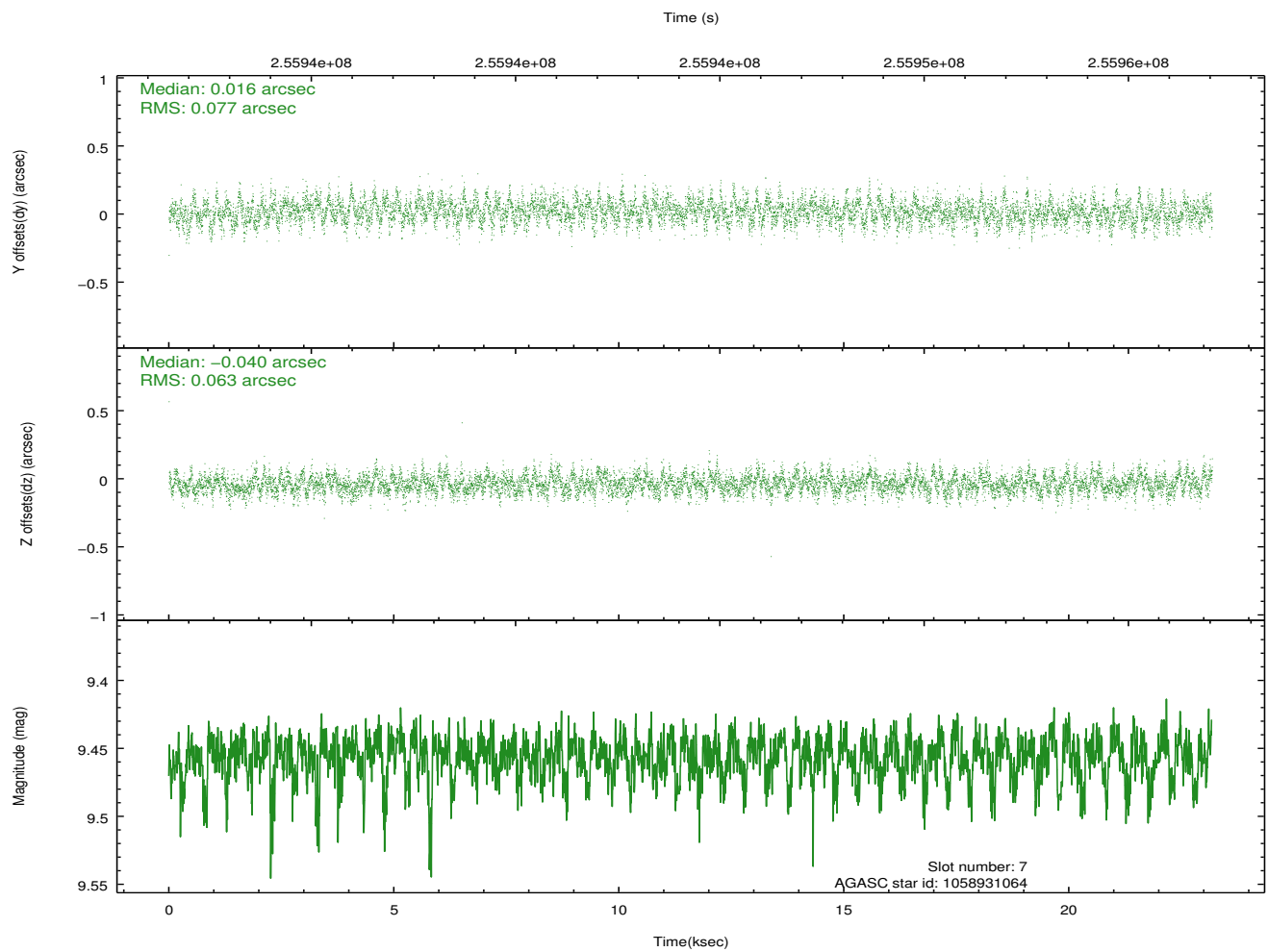
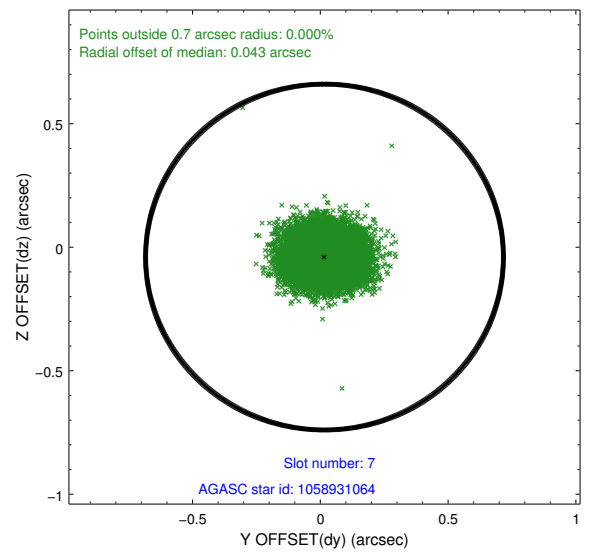
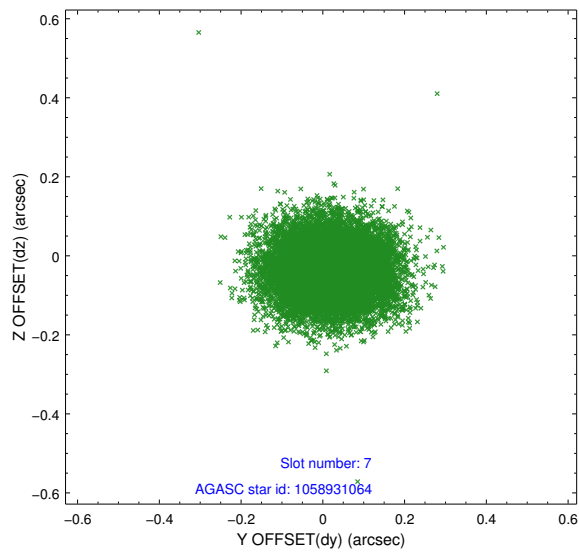
2.4.3 Slot 5



2.4.4 Slot 6

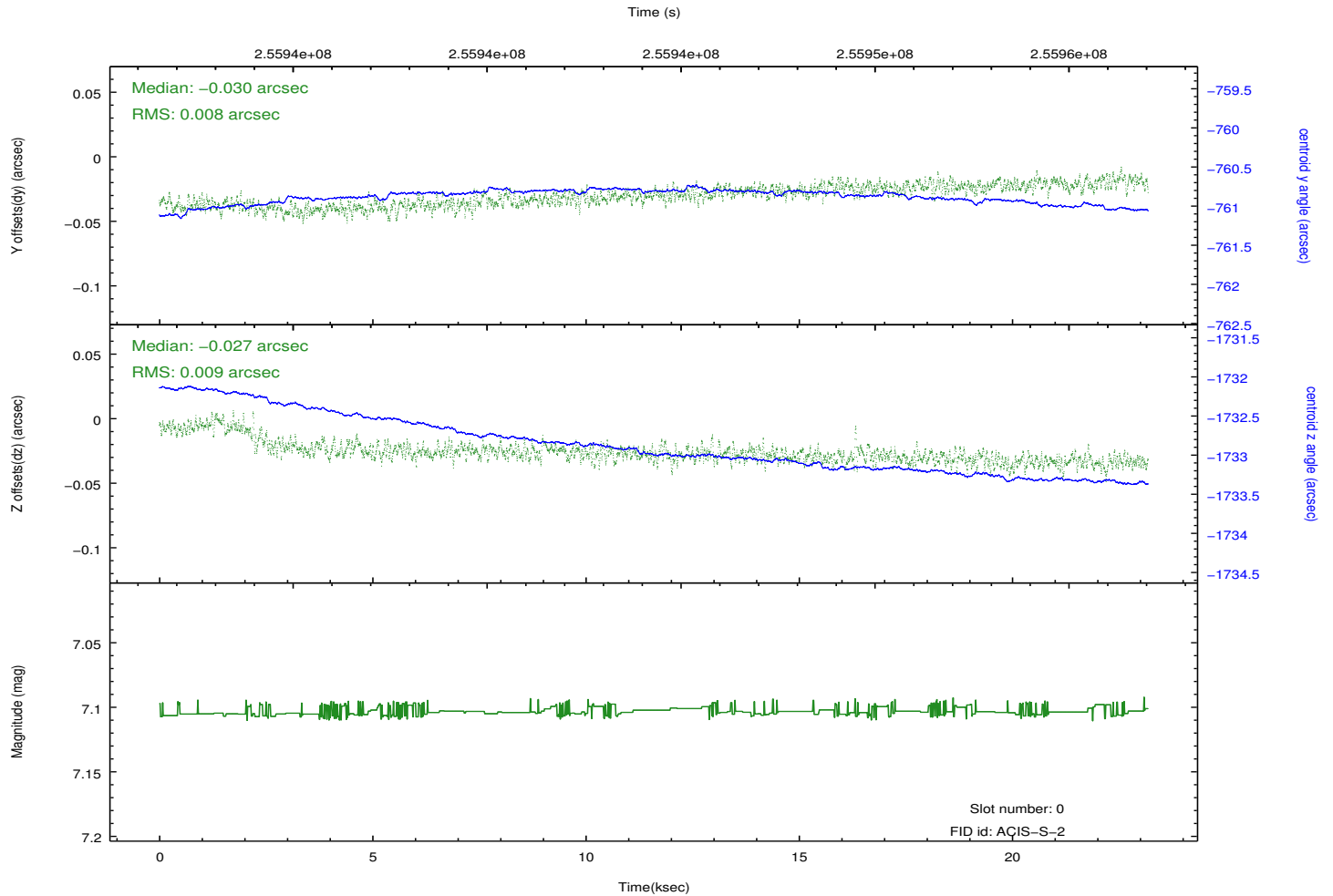
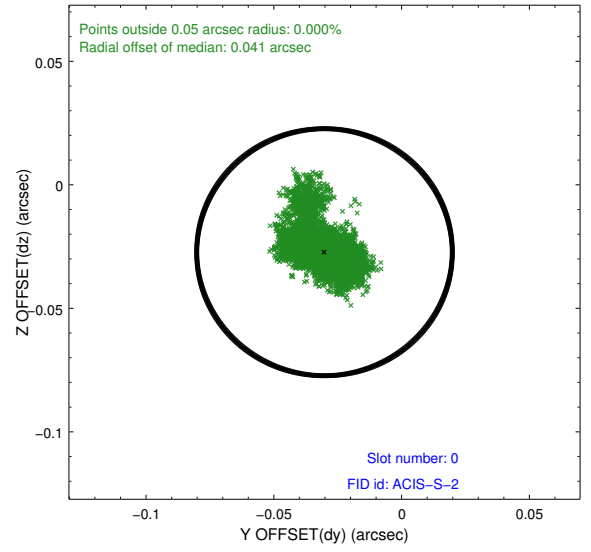
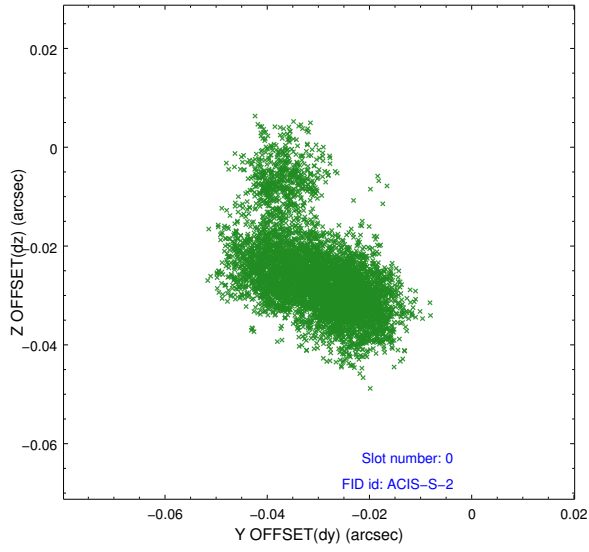


2.4.5 Slot 7

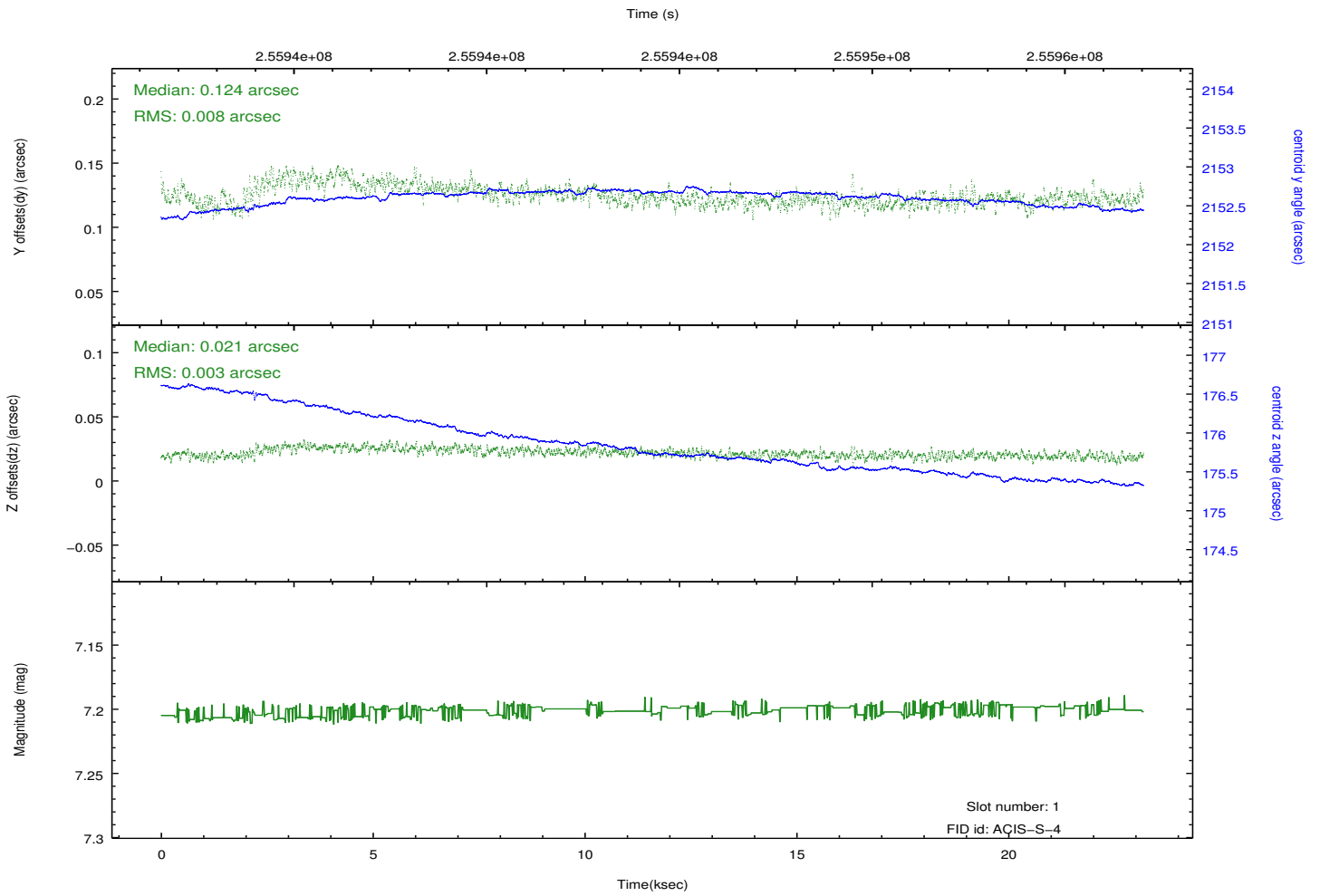
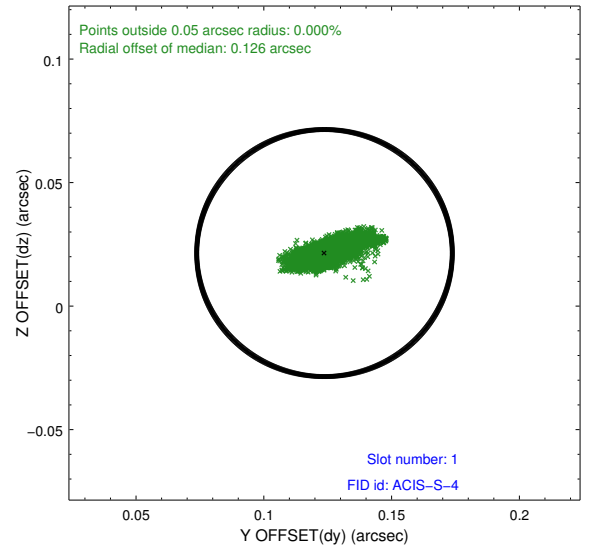
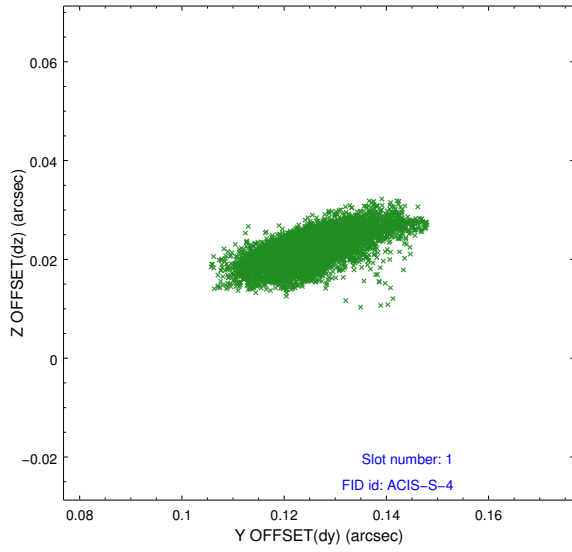


2.5 FID Slots

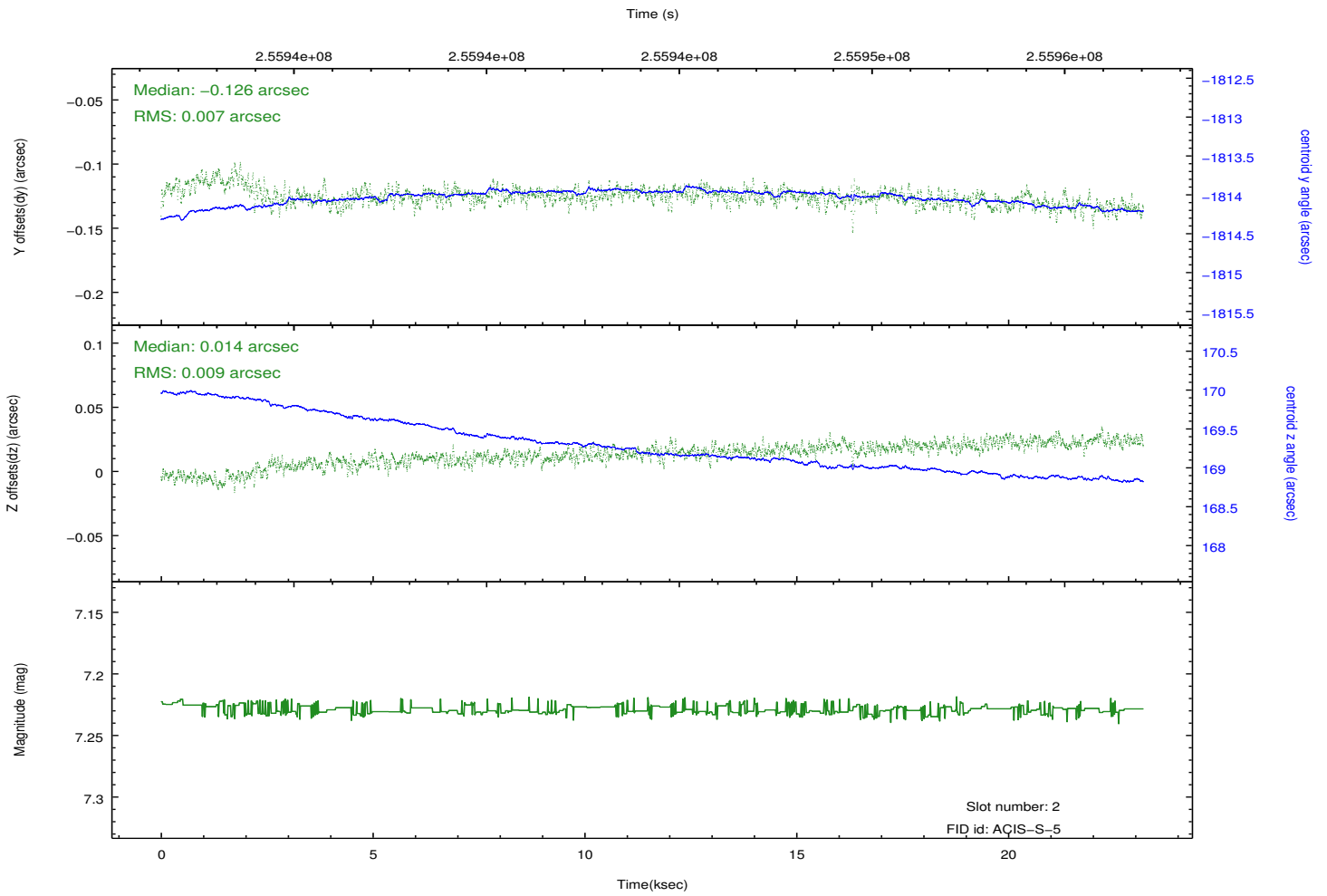
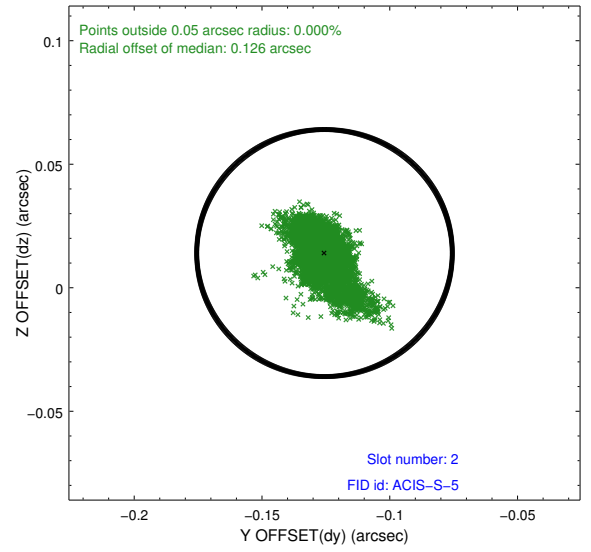
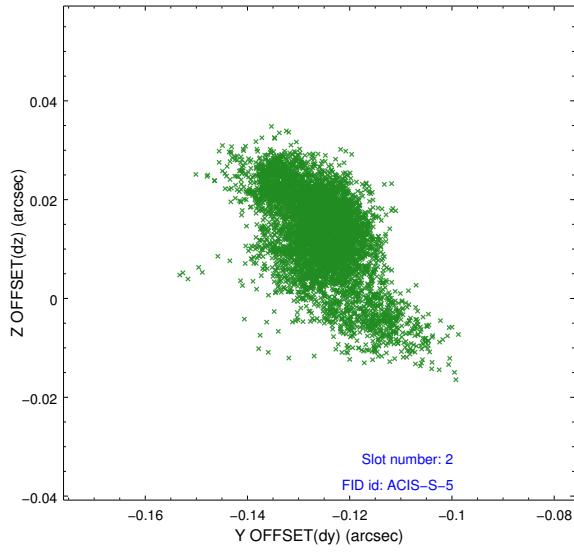
2.5.1 Slot 0



2.5.2 Slot 1



2.5.3 Slot 2



A Summary

A.1 Status

V&V Scientist	Beth Sundheim
V&V Date (YYYY-MM-DD)	2012.03.27
V&V Edition	1
V&V Disposition and Status	OK
V&V Charge Time	23.18625

A.2 Comments

Window preference met.