

V&V Reference Report

L2 ASCDS Version : 8.4.3

Observation 6937 - L2 Version 2
Chandra X-Ray Center

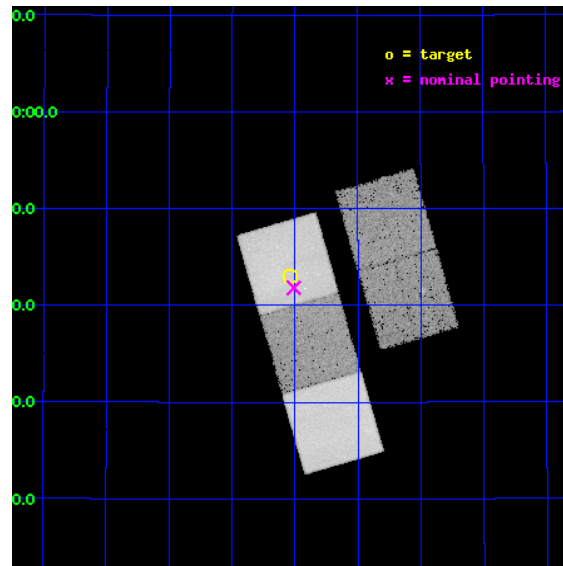
L2 Processing Date : Apr 3 2012

Contents

1	Front	2
2	OBI	3
2.1	OBI	3
2.1.1	Images	3
2.1.2	Bias	3
2.1.3	Parameters	4
2.1.4	Events	4
2.2	Compared Parameters	5
2.3	Aspect	6
2.4	Star Slots	9
2.4.1	Slot 3	9
2.4.2	Slot 4	10
2.4.3	Slot 5	11
2.4.4	Slot 6	12
2.4.5	Slot 7	13
2.5	FID Slots	14
2.5.1	Slot 0	14
2.5.2	Slot 1	15
2.5.3	Slot 2	16
A	Summary	17
A.1	Status	17
A.2	Comments	17

1 Front

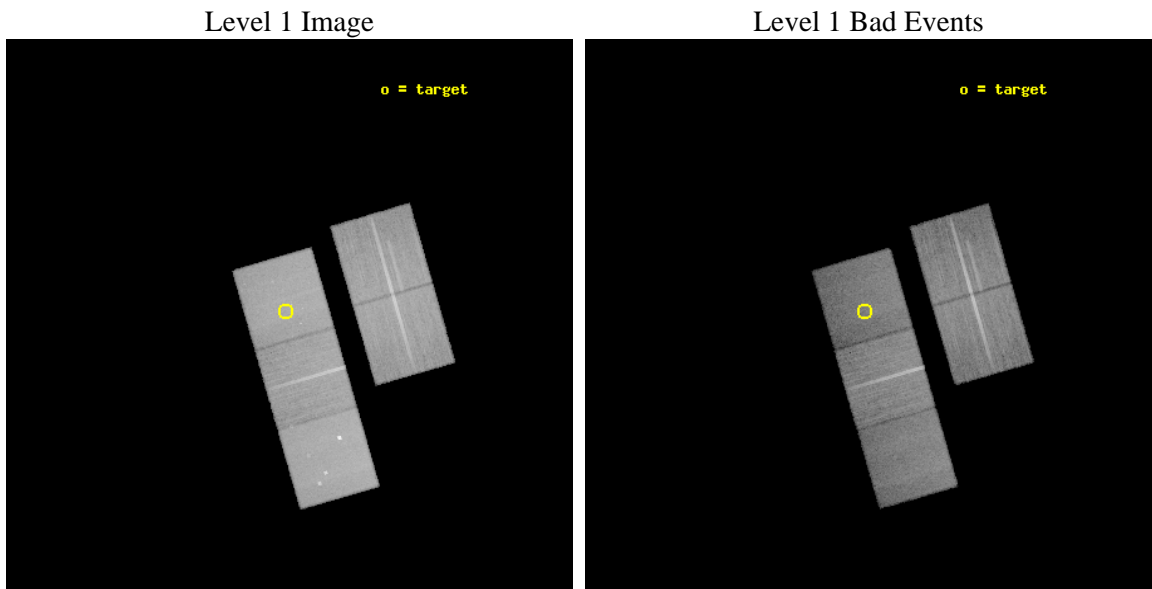
seq_num	800570	Sequence number
obs_id	6937	Observation id
title	The Cosmological Formation of Galaxy Groups	Proposal title
observer	Dr. DAVID BUOTE	Principal investigator
object	RXC J1110.5+2842	Source name
dtcycle	0	
cycle	P	events from which exps? Prim/Second/Both
ra_targ	167.635833	Observer's specified target RA [deg]
dec_targ	28.716389	Observer's specified target Dec [deg]
ra_nom	167.62737582011	Nominal RA [deg]
dec_nom	28.6969816254	Nominal Dec [deg]
roll_nom	253.85284533143	Nominal Roll [deg]
revision	2	Processing version of data
ontime	27682.999946743	Sum of GTIs [s]
livetime	27321.301172511	Livetime [s]
ontime2	27670.436045825	Sum of GTIs [s]
ontime3	27676.718006253	Sum of GTIs [s]
ontime5	27682.999946743	Sum of GTIs [s]
ontime6	27682.999946743	Sum of GTIs [s]
ontime7	27682.999946743	Sum of GTIs [s]
l2events	308485	Number of level 2 events



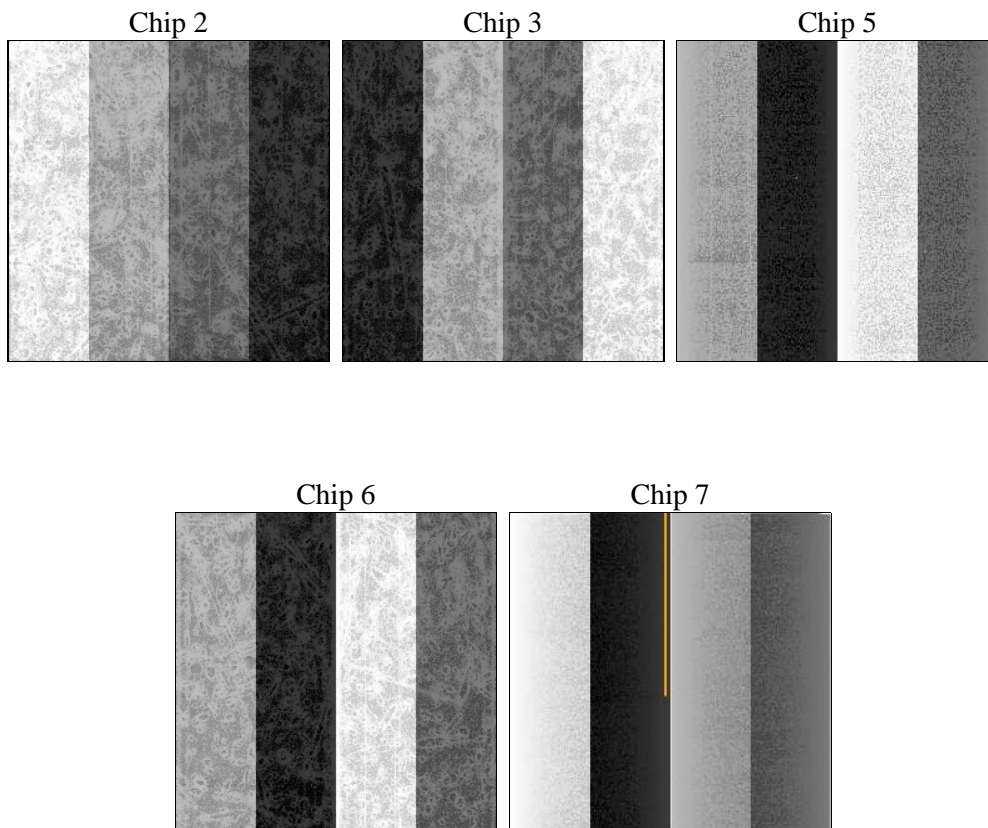
2 OBI

2.1 OBI

2.1.1 Images



2.1.2 Bias



2.1.3 Parameters

obi_num	0	Obi number	sched_exp_time	27500.000000	[s] Scheduled observation exposure time
ascdsver	8.4.3.1	Processing system revision	ontime	27682.999946743	Sum of GTIs [s]
caldbver	4.4.9	 	ontime2	27670.436045825	Sum of GTIs [s]
date	2012-04-03T13:13:15	Date and time of file creation	ontime3	27676.718006253	Sum of GTIs [s]
revision	2	Processing version of data	ontime5	27682.999946743	Sum of GTIs [s]
			ontime6	27682.999946743	Sum of GTIs [s]
			ontime7	27682.999946743	Sum of GTIs [s]
			l1events	1190098	Number of level 1 events

2.1.4 Events

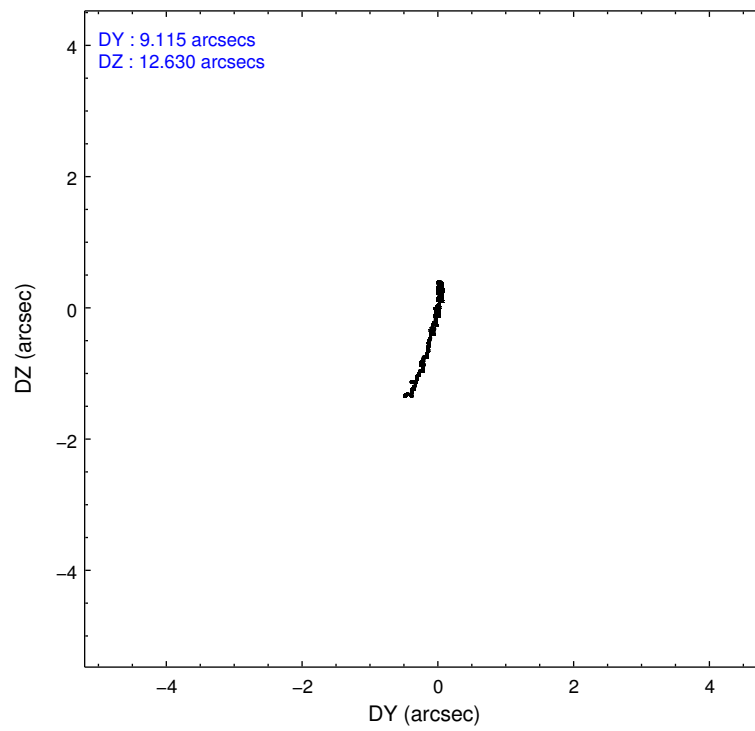
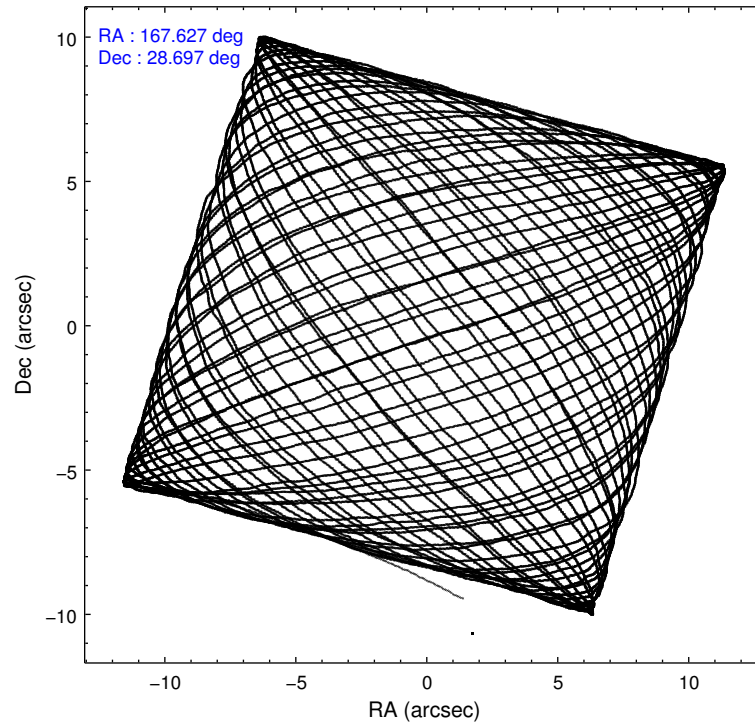
	ccd 2	ccd 3	ccd 5	ccd 6	ccd 7
level 1 events	217236	206829	292683	221804	251546
rejected events	196534	186901	146372	197552	128815
rejected %	90%	90%	50%	89%	51%

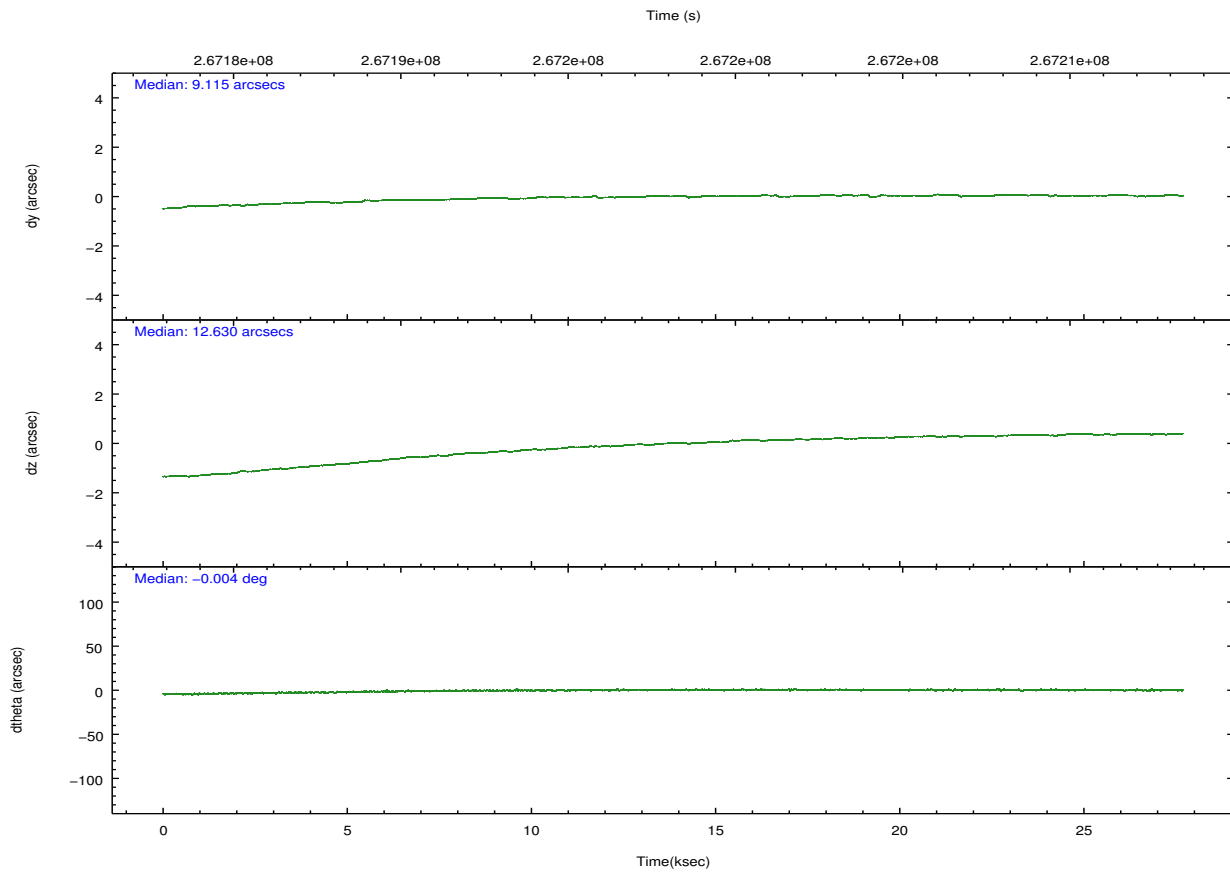
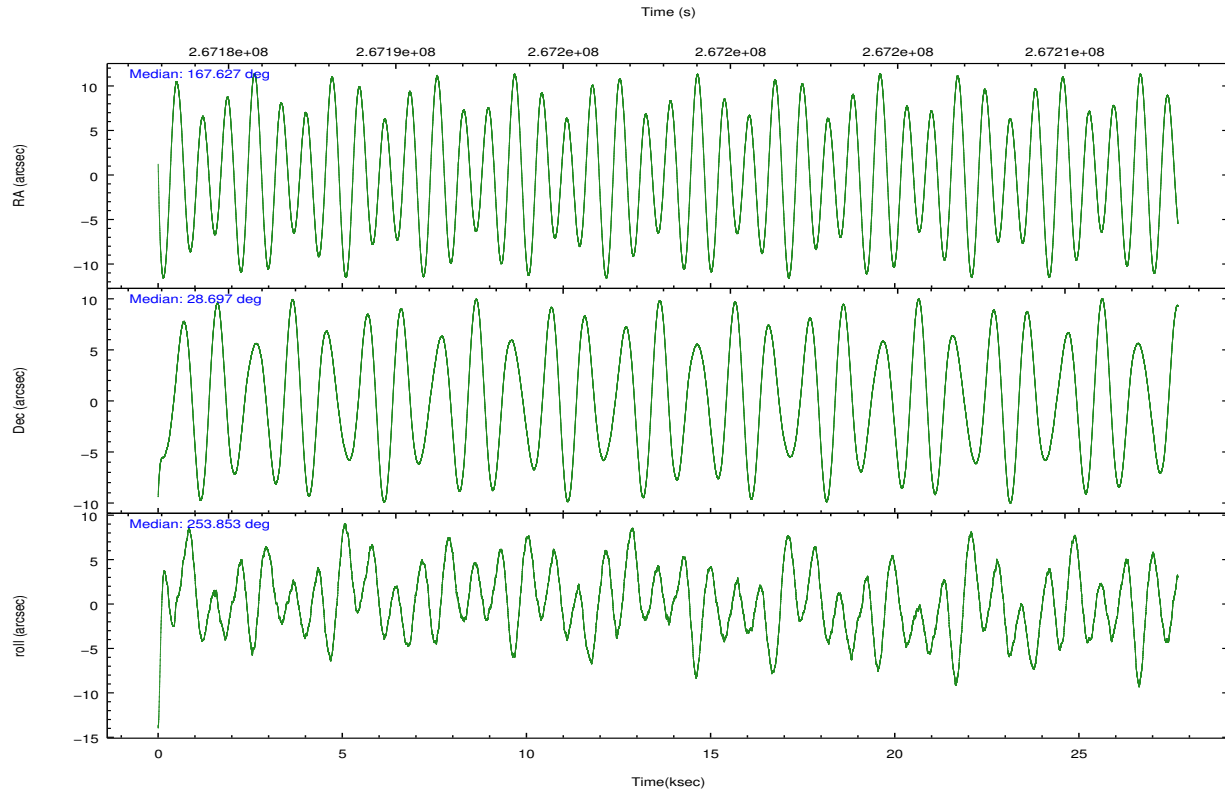
	ccd 2	ccd 3	ccd 5	ccd 6	ccd 7
grade 0 events	7637	7351	18315	9811	14844
	3%	3%	6%	4%	5%
grade 1 events	110	113	291	134	218
	0%	0%	0%	0%	0%
grade 2 events	4876	4171	41596	4995	25764
	2%	2%	14%	2%	10%
grade 3 events	2224	2287	6444	2459	11798
	1%	1%	2%	1%	4%
grade 4 events	2353	2344	6169	2450	11695
	1%	1%	2%	1%	4%
grade 5 events	6589	8206	23583	8270	25092
	3%	3%	8%	3%	9%
grade 6 events	3658	3837	74165	4591	58923
	1%	1%	25%	2%	23%
grade 7 events	189789	178520	122120	189094	103212
	87%	86%	41%	85%	41%

2.2 Compared Parameters

Parameter	Planned	Actual	Parameter	Planned	Actual
Instrument	ACIS	ACIS	Obspar format version number	7	7
Detector	ACIS-23567	ACIS-23567	Obspar file type	PREDICTED	ACTUAL
Grating	NONE	NONE	Obspar update status	NONE	UPDATED
Data mode	VFAINT	VFAINT	Number of optional ACIS chips dropped	0	0
Observation mode	POINTING	POINTING	On-chip summing requested	N	N
[deg] Pointing RA	167.619541	167.6273758201133	Subarray requested	NONE	NONE
[deg] Pointing Dec	28.723341	28.69698162540016	Alternating exposures requested	N	N
[deg] Pointing Roll	253.699983	253.8528453314291	[s] Primary exposure time	0.000000	3.1
[mm] SIM focus pos	-0.684267	-0.6828225247311905			
[mm] SIM defocus	0	0.001444936568705701			
[mm] SIM translation stage pos	-190.132523	-190.1400660498719			
[mm] SIM translation stage offset	0	0.00754346686406393			
[s] Observation start time (MET)	267184476.184000	267183298.22618			
Observation start date	2006-06-20T09:53:31	2006-06-20T09:34:58			
[s] Observation end time (MET)	267211976.184000	267212515.85255			
Observation end date	2006-06-20T17:31:51	2006-06-20T17:41:55			
Read mode	TIMED	TIMED			

2.3 Aspect



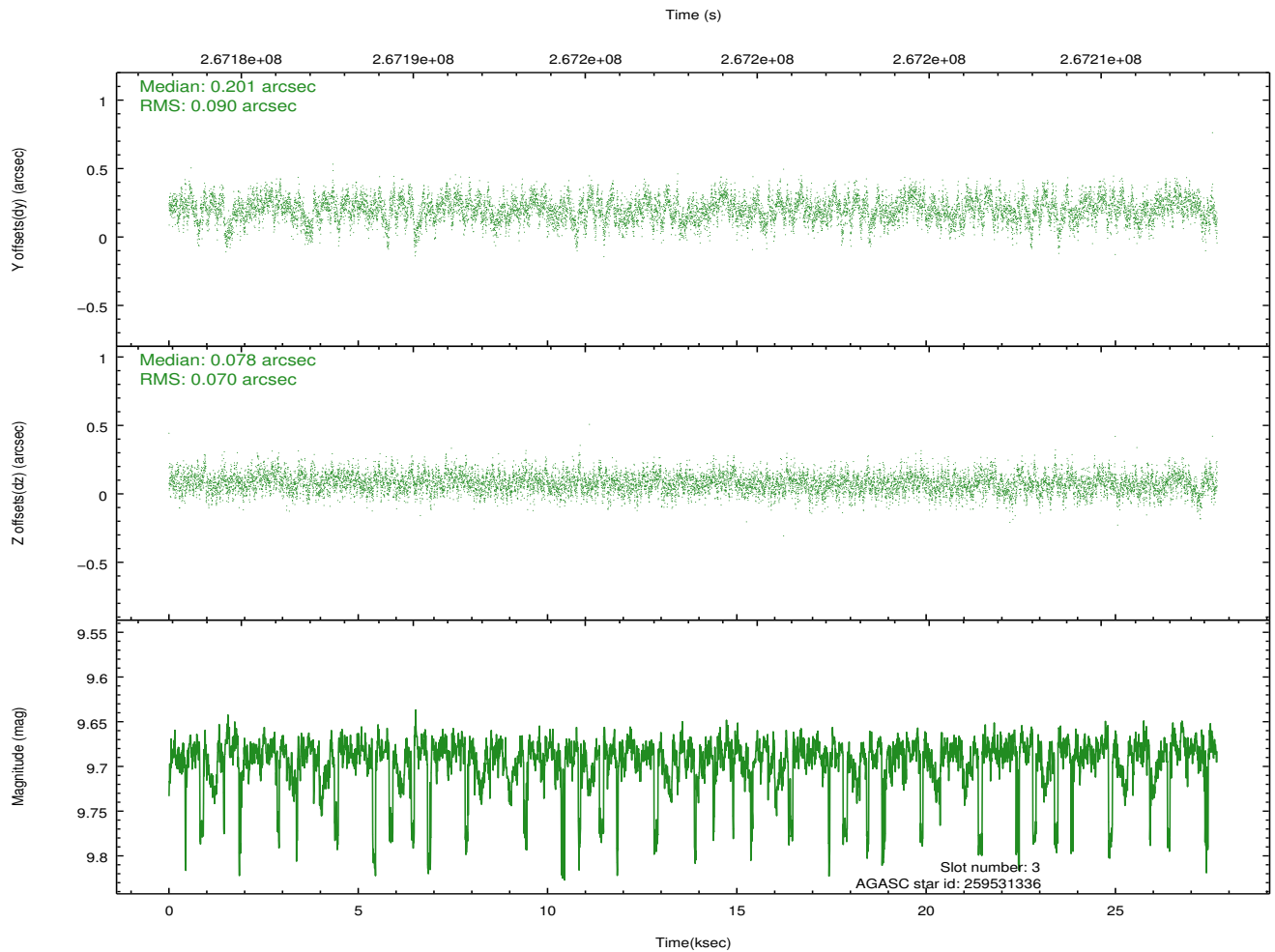
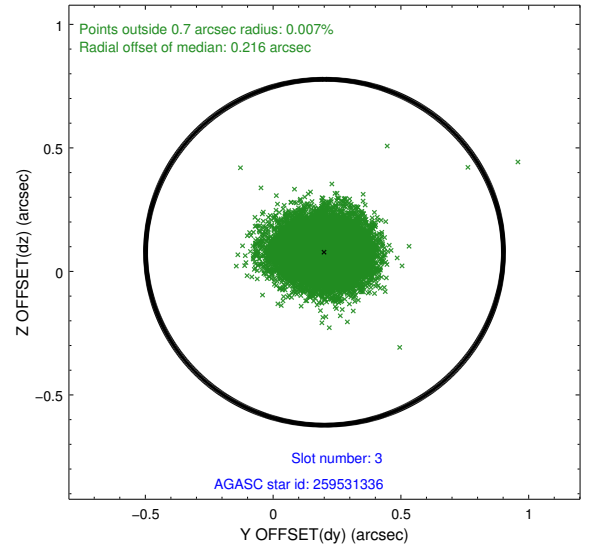
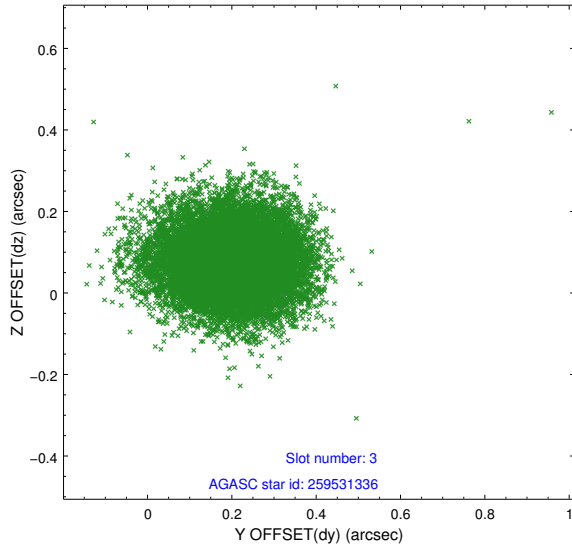


Slot Statistics

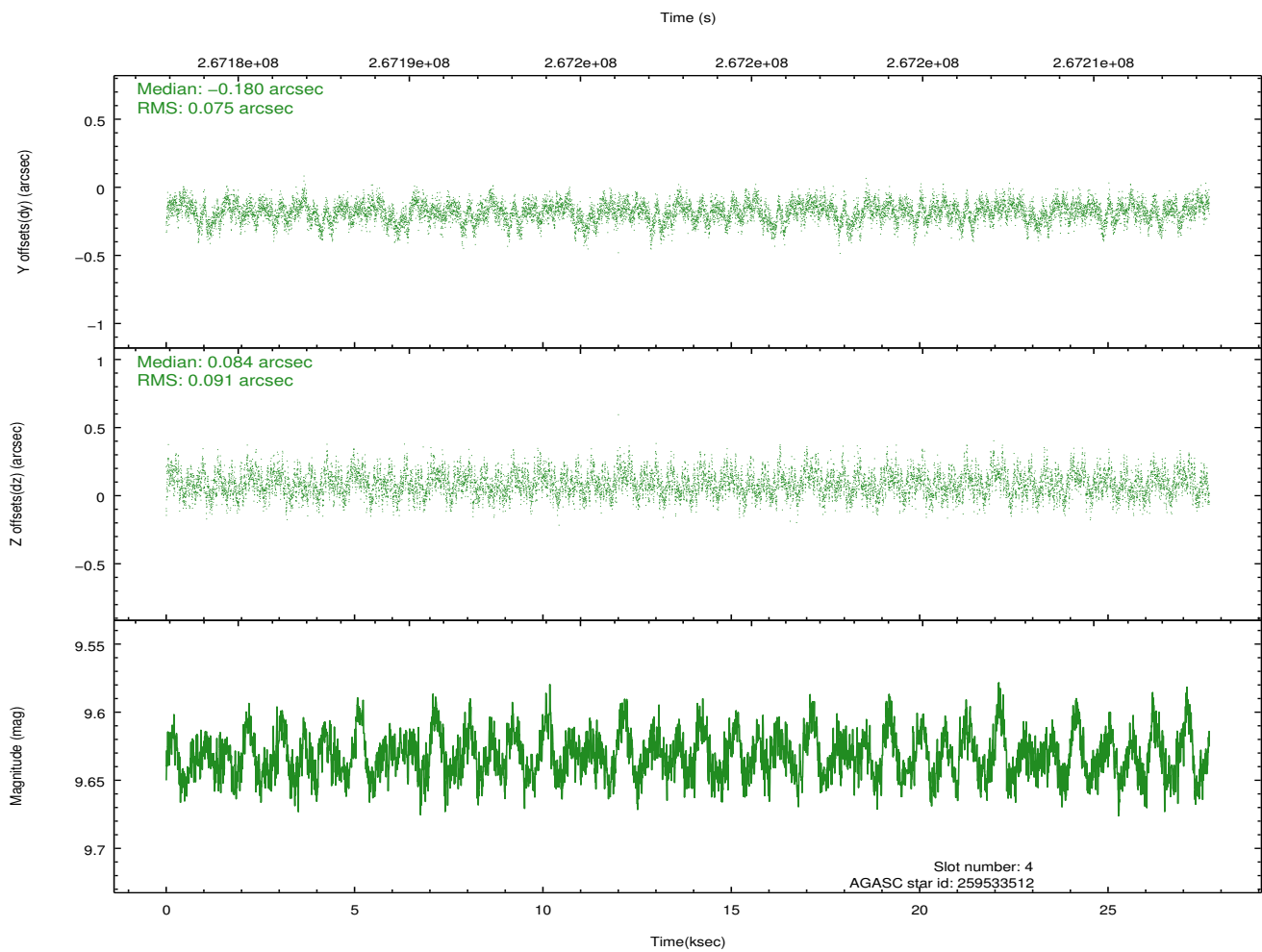
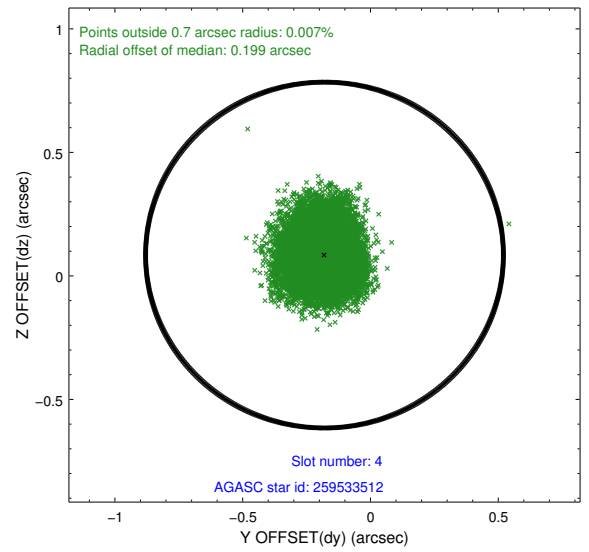
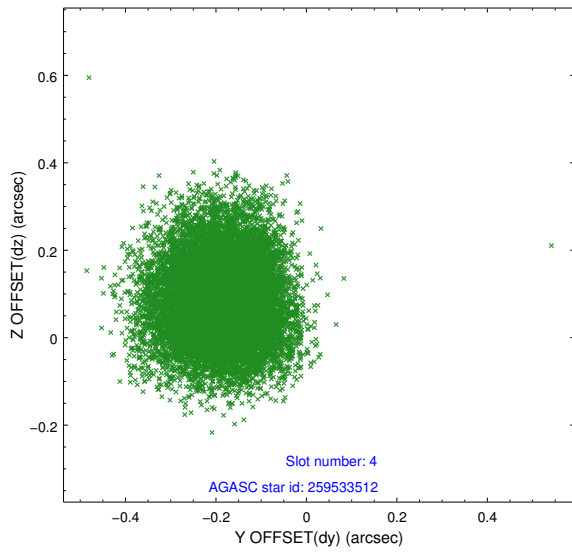
slot	status	id	mag	n_pts	med_dy	med_dz	dr1	dr2	ra	dec	mean_y	mean_z
0	FID	ACIS-S-1	7.19	6753	0.050	-0.052	0.022	0.039	0.000000	0.000000	934.18	-1729.46
1	FID	ACIS-S-4	7.20	6753	0.105	0.015	0.016	0.034	0.000000	0.000000	2151.74	174.65
2	FID	ACIS-S-5	7.23	6753	-0.183	0.049	0.010	0.021	0.000000	0.000000	-1814.76	168.46
3	GUIDE	259531336	9.69	13410	0.201	0.078	0.122	0.198	167.125975	28.278198	1975.12	-1052.89
4	GUIDE	259533512	9.63	13486	-0.180	0.084	0.126	0.202	167.126871	29.314354	-1610.75	-2082.50
5	GUIDE	259934296	9.51	13472	-0.027	0.122	0.095	0.156	167.553301	28.924112	-634.51	-402.97
6	GUIDE	259525808	9.45	13439	0.274	-0.127	0.111	0.183	166.725807	28.395672	1917.48	-2388.50
7	GUIDE	259526360	9.51	13480	-0.257	-0.160	0.122	0.190	167.212160	29.491722	-2298.29	-2002.55

2.4 Star Slots

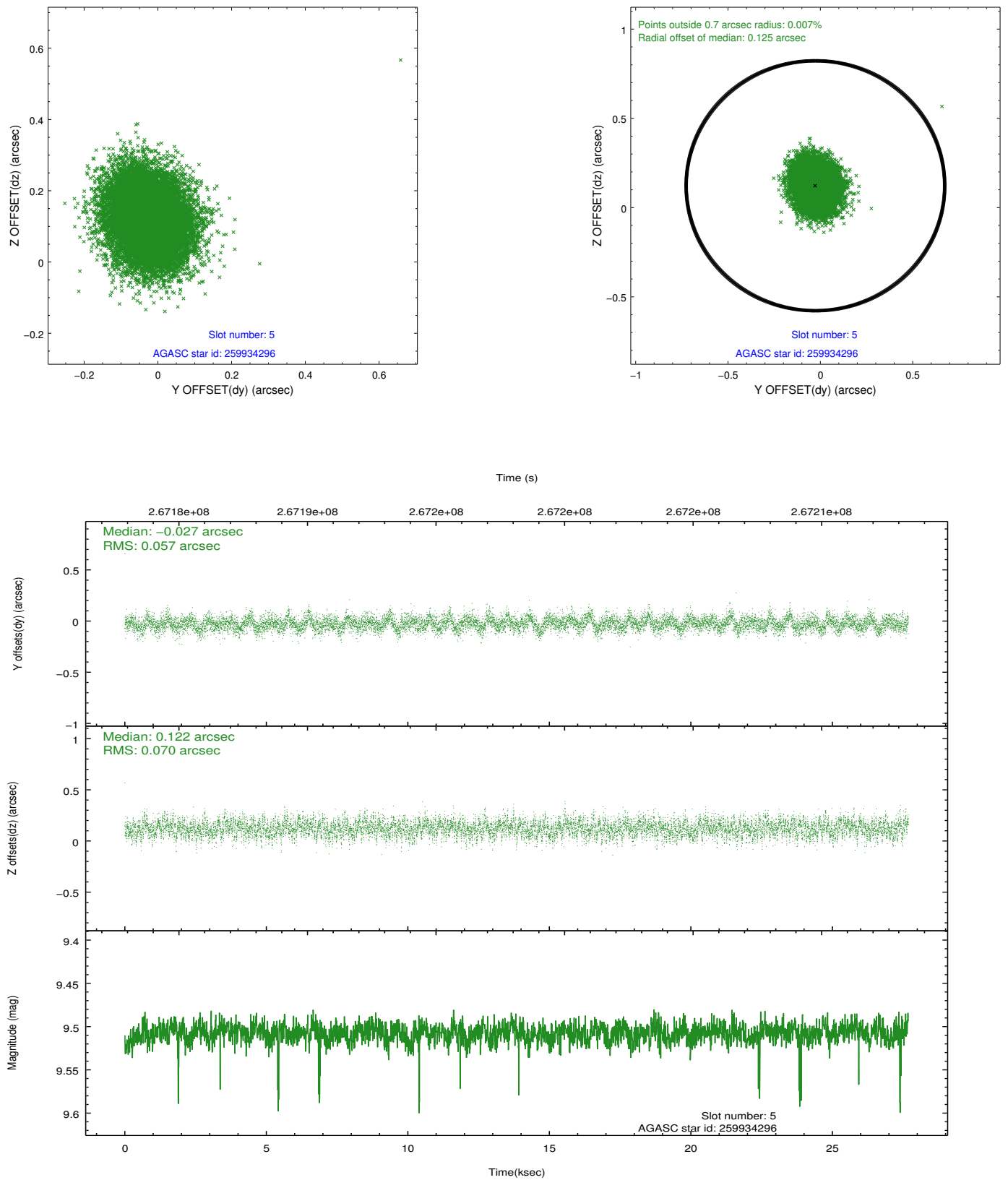
2.4.1 Slot 3



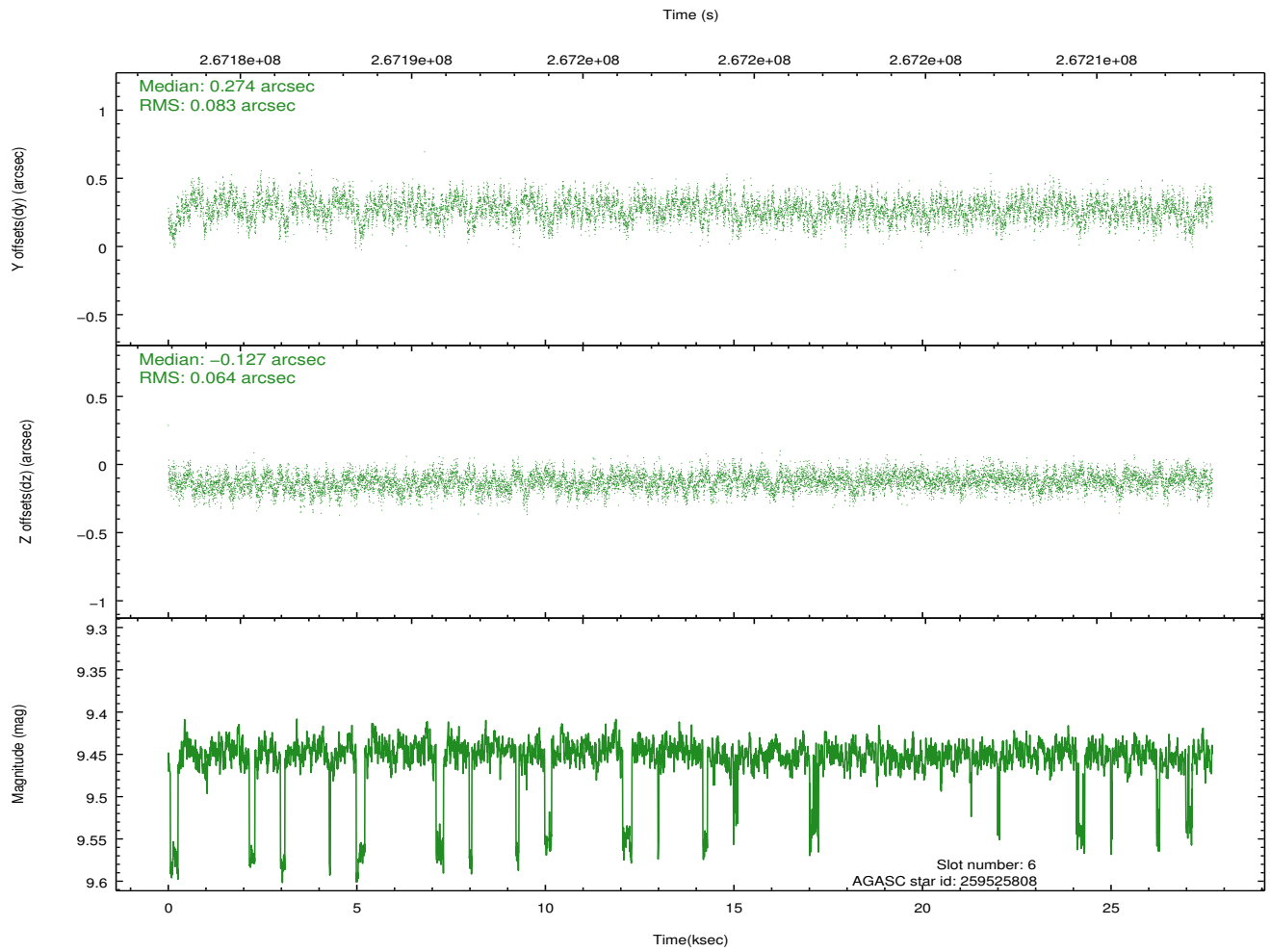
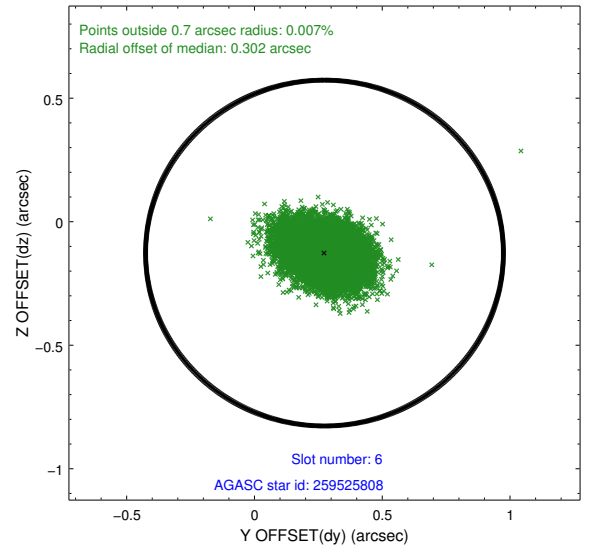
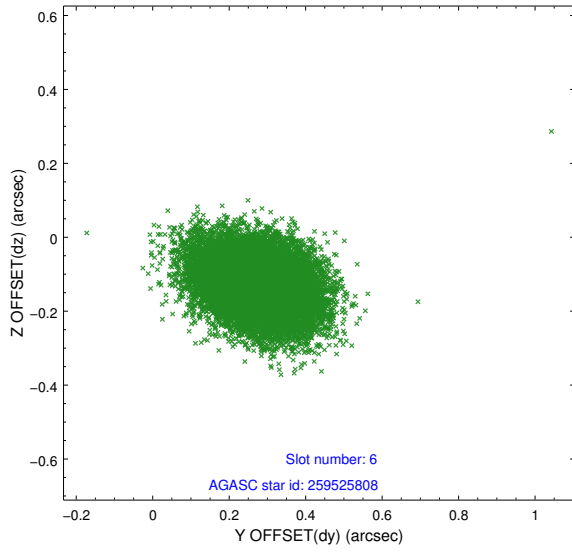
2.4.2 Slot 4



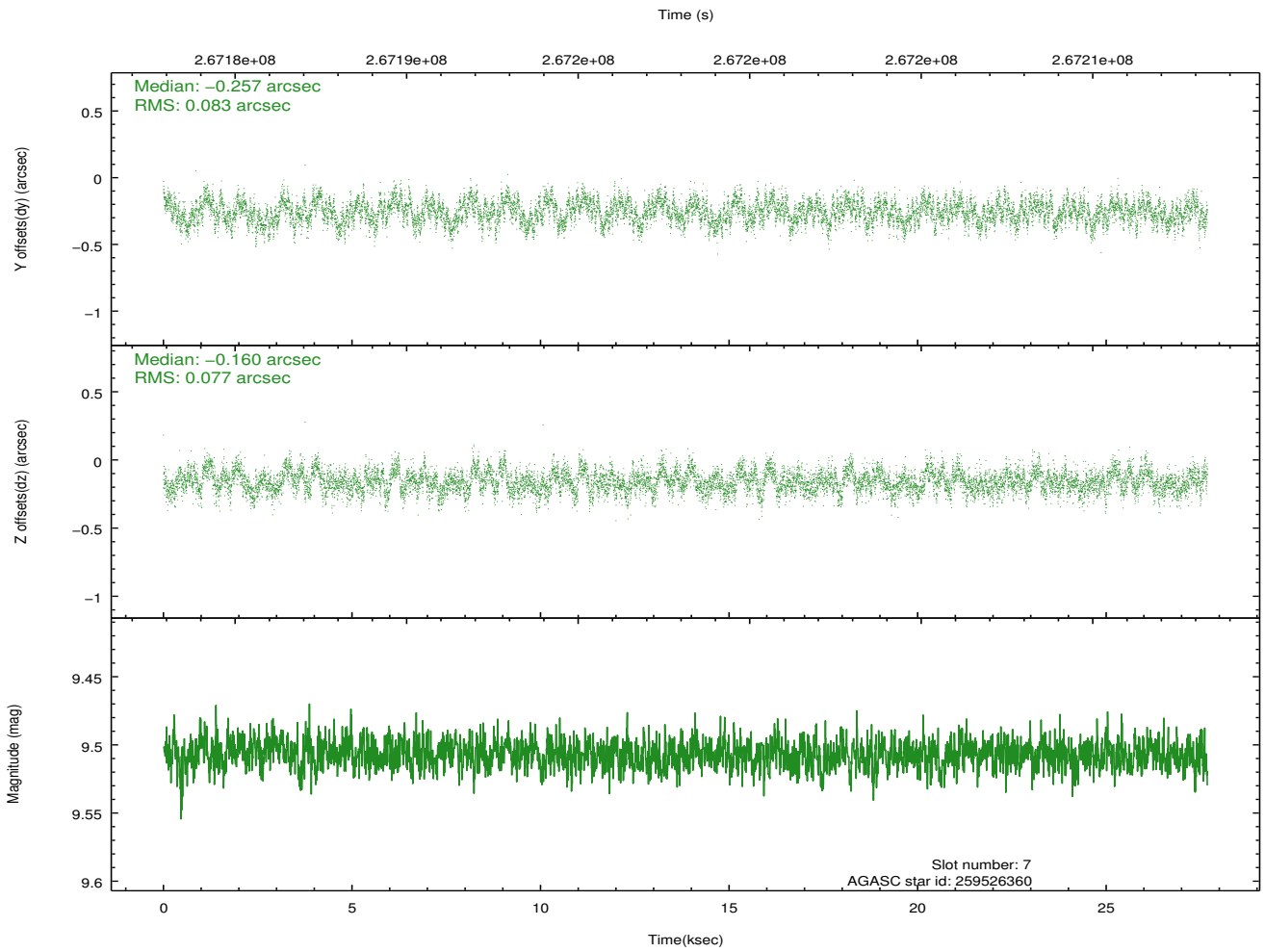
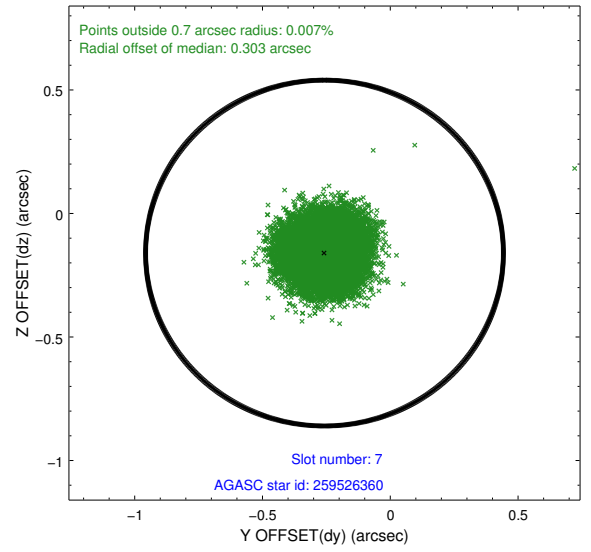
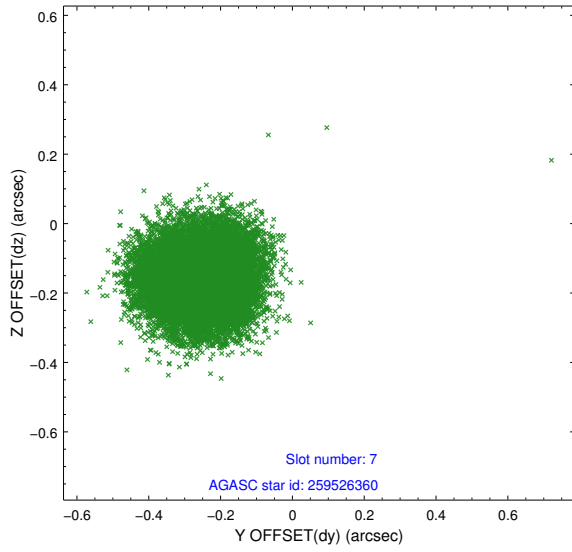
2.4.3 Slot 5



2.4.4 Slot 6

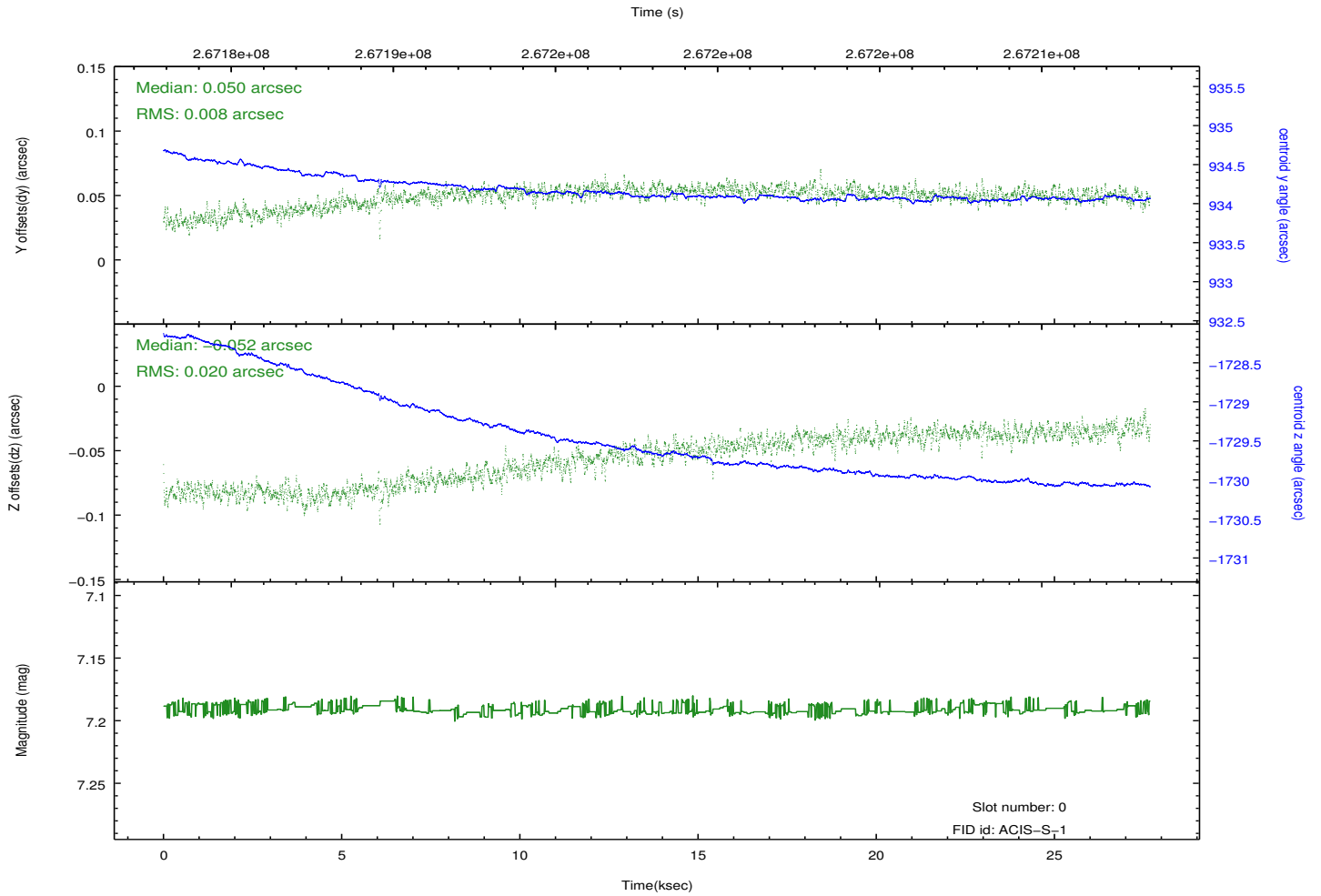
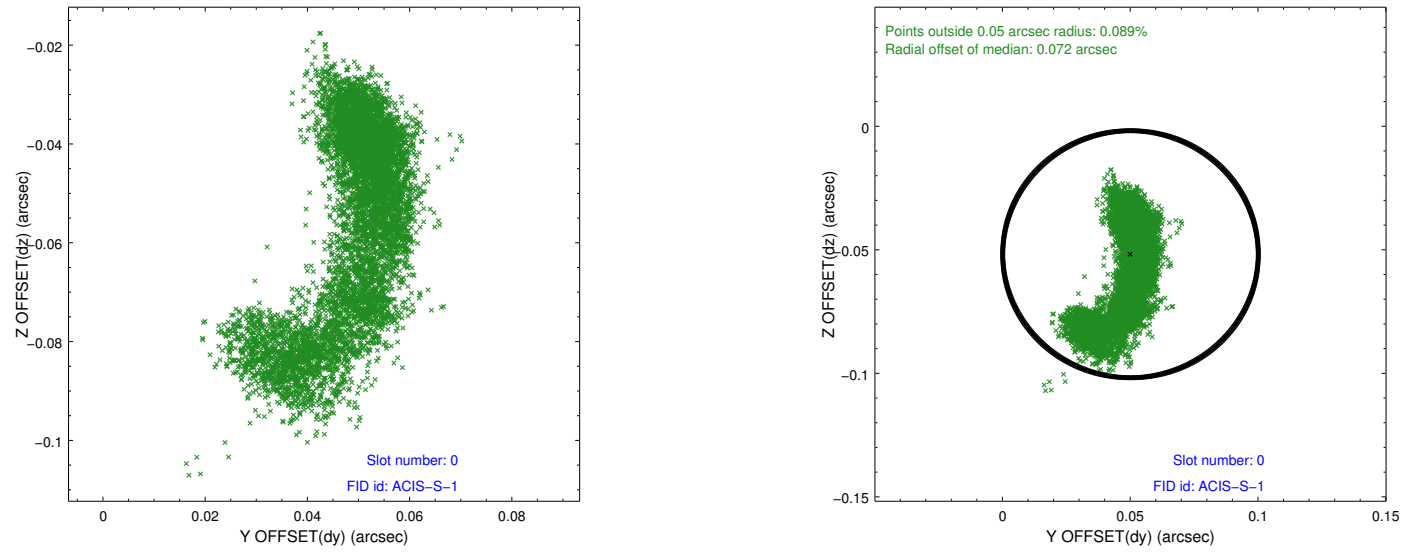


2.4.5 Slot 7

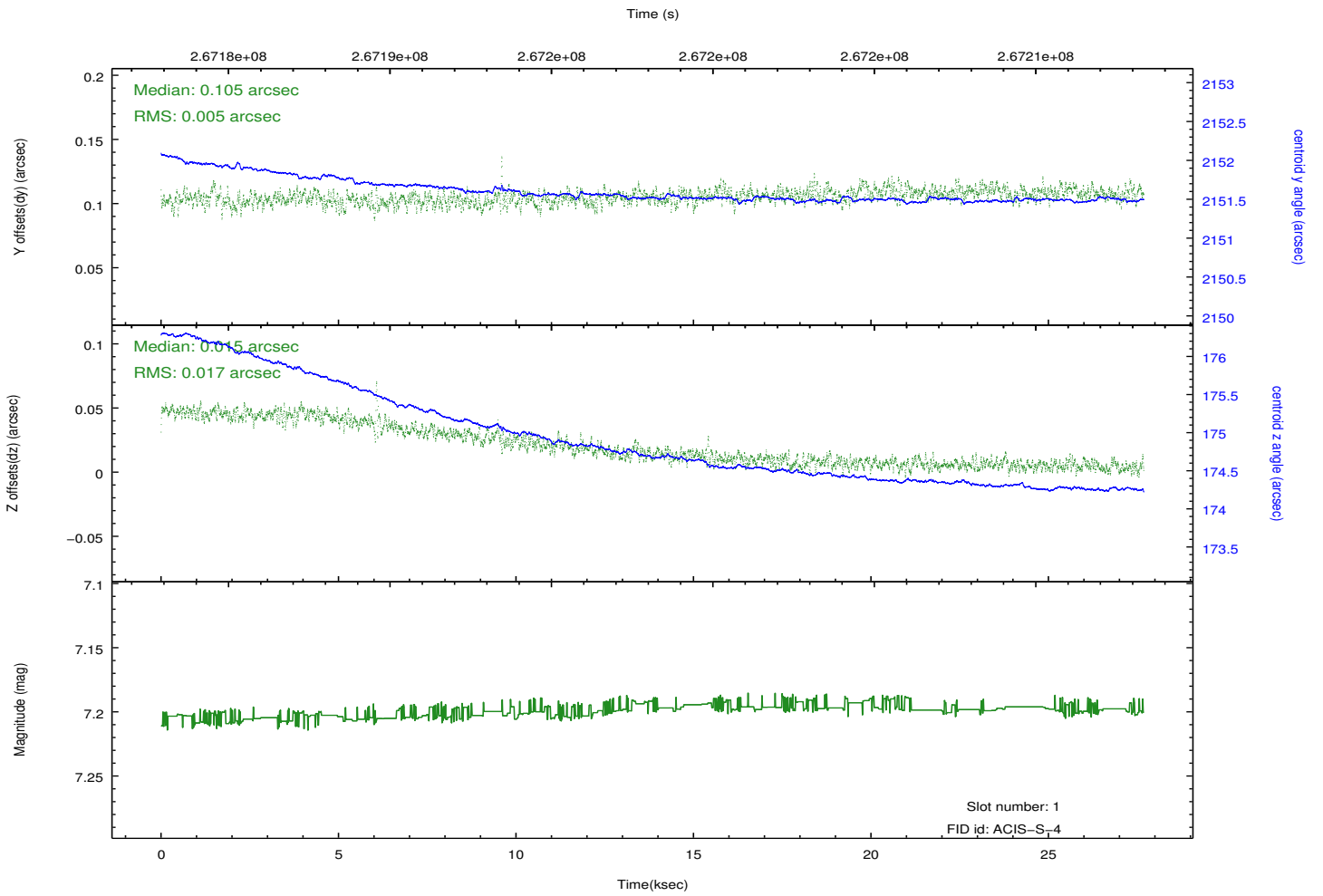
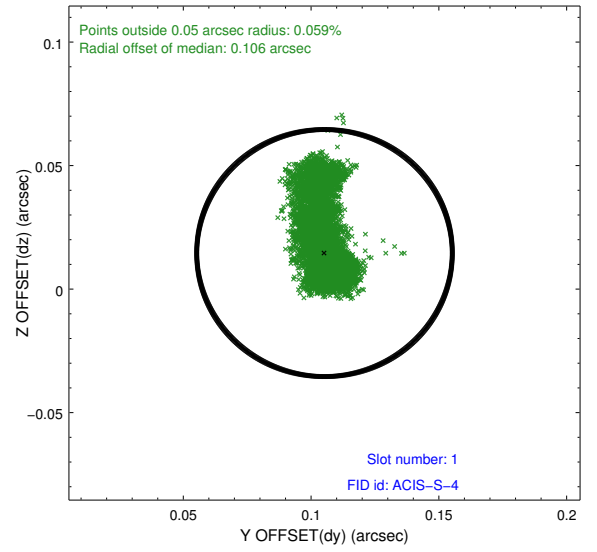
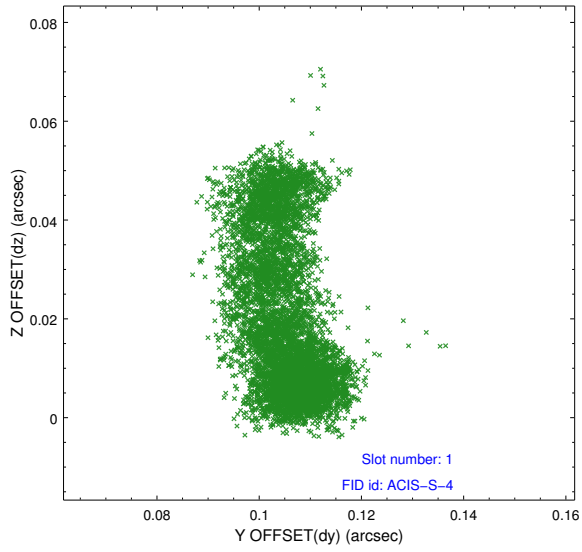


2.5 FID Slots

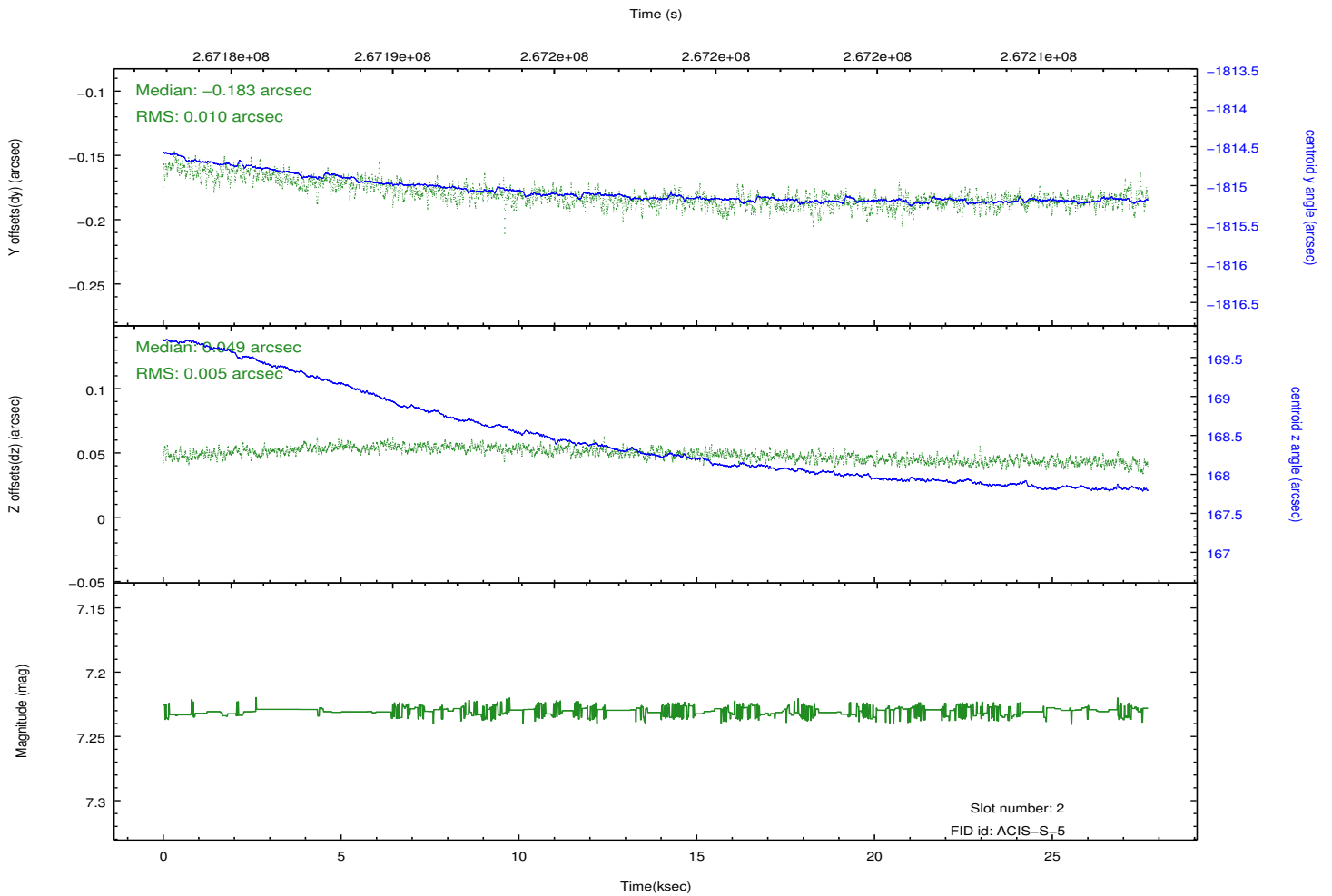
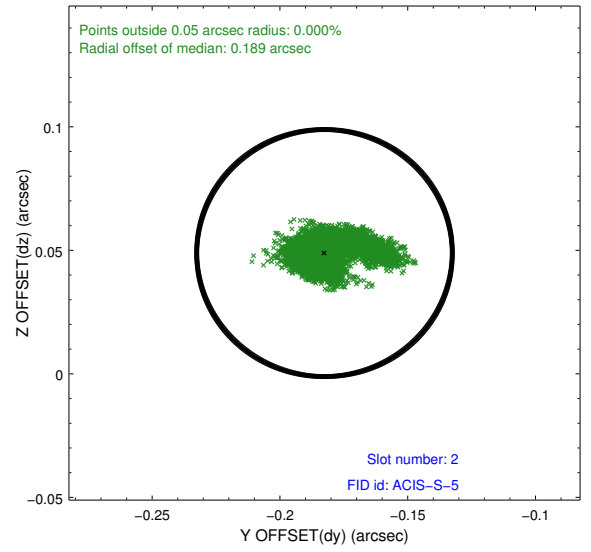
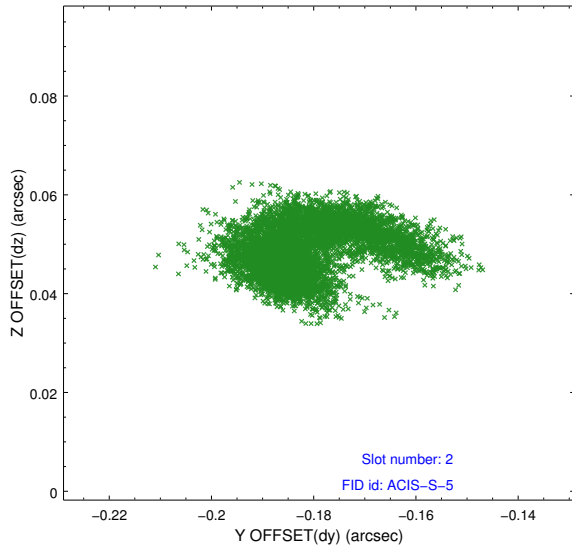
2.5.1 Slot 0



2.5.2 Slot 1



2.5.3 Slot 2



A Summary

A.1 Status

V&V Scientist	Jen Lauer
V&V Date (YYYY-MM-DD)	2012.04.04
V&V Edition	1
V&V Disposition and Status	OK
V&V Charge Time	27.6829999

A.2 Comments