

V&V Reference Report

L2 ASCDS Version : 8.4.3

Observation 6977 - L2 Version 2
Chandra X-Ray Center

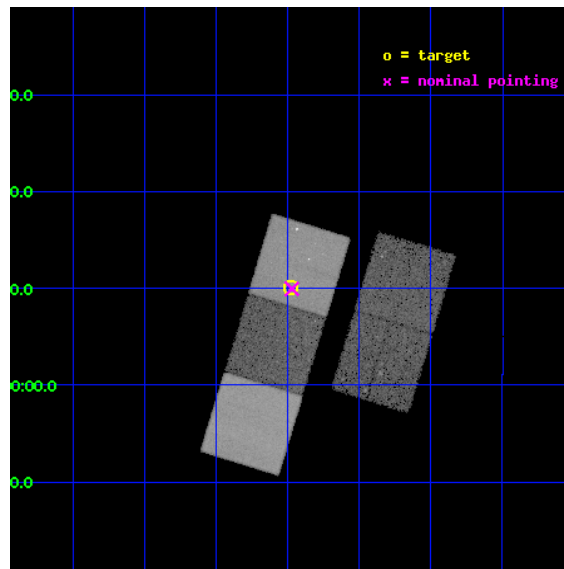
L2 Processing Date : Mar 25 2012

Contents

1	Front	2
2	OBI	3
2.1	OBI	3
2.1.1	Images	3
2.1.2	Bias	3
2.1.3	Parameters	4
2.1.4	Events	4
2.2	Compared Parameters	5
2.3	Aspect	6
2.4	Star Slots	9
2.4.1	Slot 3	9
2.4.2	Slot 4	10
2.4.3	Slot 5	11
2.4.4	Slot 6	12
2.4.5	Slot 7	13
2.5	FID Slots	14
2.5.1	Slot 0	14
2.5.2	Slot 1	15
2.5.3	Slot 2	16
A	Summary	17
A.1	Status	17
A.2	Comments	17

1 Front

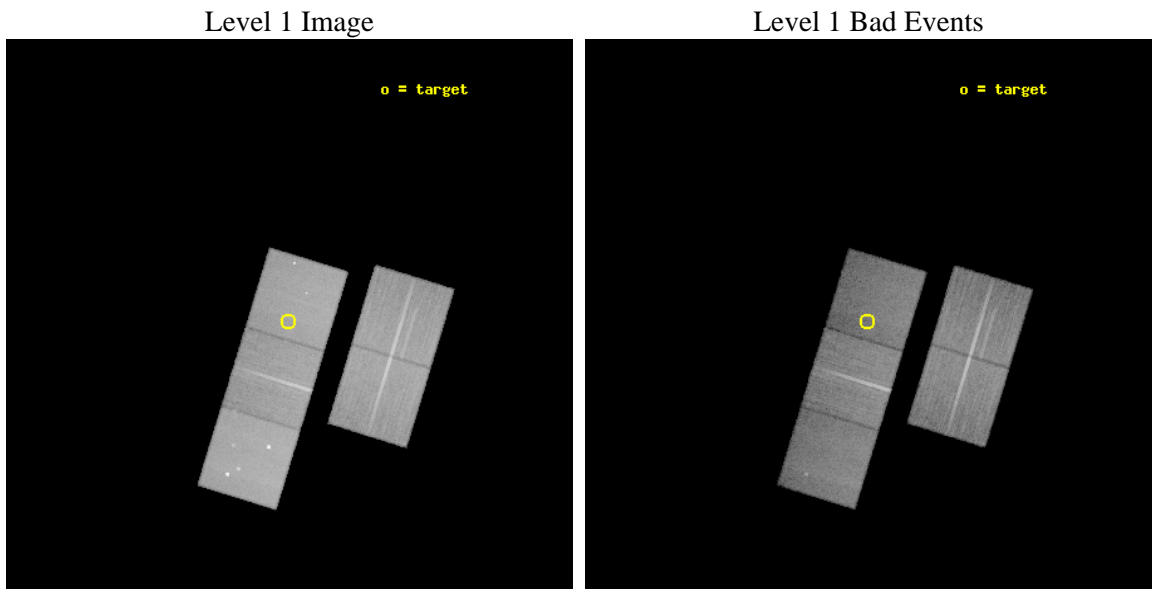
seq_num	800609	Sequence number
obs_id	6977	Observation id
title	HI-deficient ultracompact groups	Proposal title
observer	Prof Trevor Ponman	Principal investigator
object	HCG 30	Source name
dtcycle	0	
cycle	P	events from which exps? Prim/Second/Both
ra_targ	69.119167	Observer's specified target RA [deg]
dec_targ	-2.8325	Observer's specified target Dec [deg]
ra_nom	69.117924272324	Nominal RA [deg]
dec_nom	-2.8341730013914	Nominal Dec [deg]
roll_nom	287.02732999706	Nominal Roll [deg]
revision	2	Processing version of data
ontime	30038.999942213	Sum of GTIs [s]
liveltime	29646.518293578	Livetime [s]
ontime2	30029.576991528	Sum of GTIs [s]
ontime3	30035.85896194	Sum of GTIs [s]
ontime5	30038.999942213	Sum of GTIs [s]
ontime6	30038.999942213	Sum of GTIs [s]
ontime7	30038.999942213	Sum of GTIs [s]
l2events	292733	Number of level 2 events



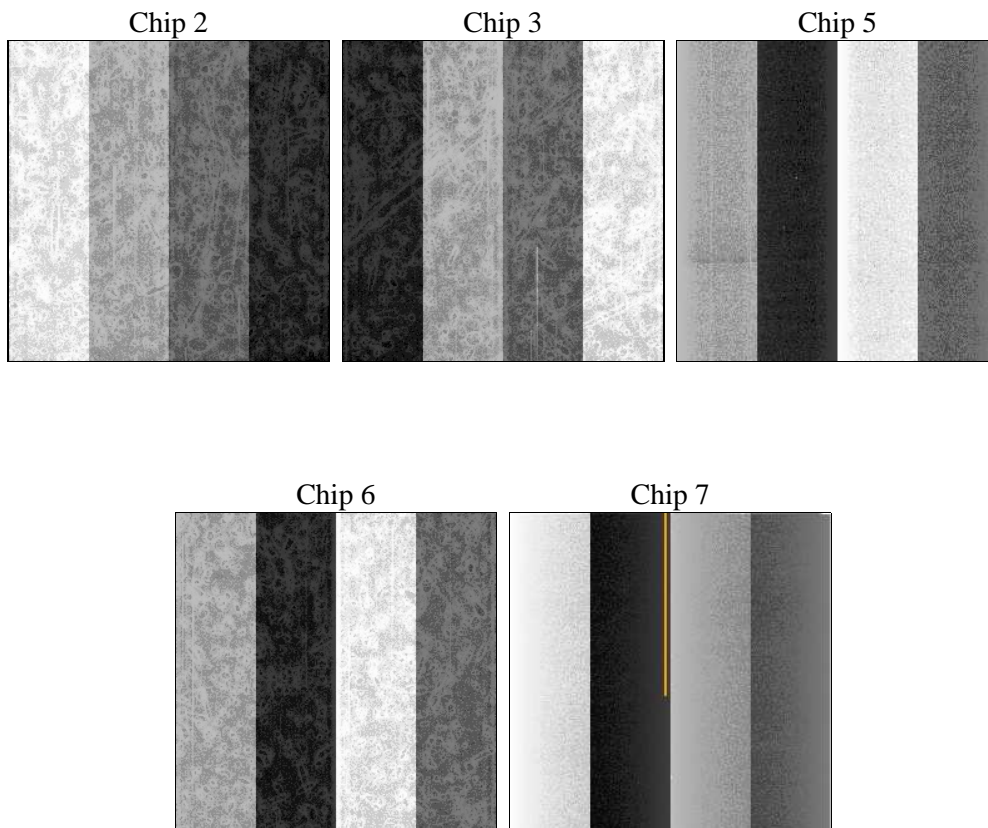
2 OBI

2.1 OBI

2.1.1 Images



2.1.2 Bias



2.1.3 Parameters

obi_num	1	Obi number	sched_exp_time	30000.000000	[s] Scheduled observation exposure time
ascdsver	8.4.3.1	Processing system revision	ontime	30038.999942213	Sum of GTIs [s]
caldbver	4.4.8	 	ontime2	30029.576991528	Sum of GTIs [s]
date	2012-03-25T02:24:50	Date and time of file creation	ontime3	30035.85896194	Sum of GTIs [s]
revision	2	Processing version of data	ontime5	30038.999942213	Sum of GTIs [s]
			ontime6	30038.999942213	Sum of GTIs [s]
			ontime7	30038.999942213	Sum of GTIs [s]
			l1events	1183047	Number of level 1 events

2.1.4 Events

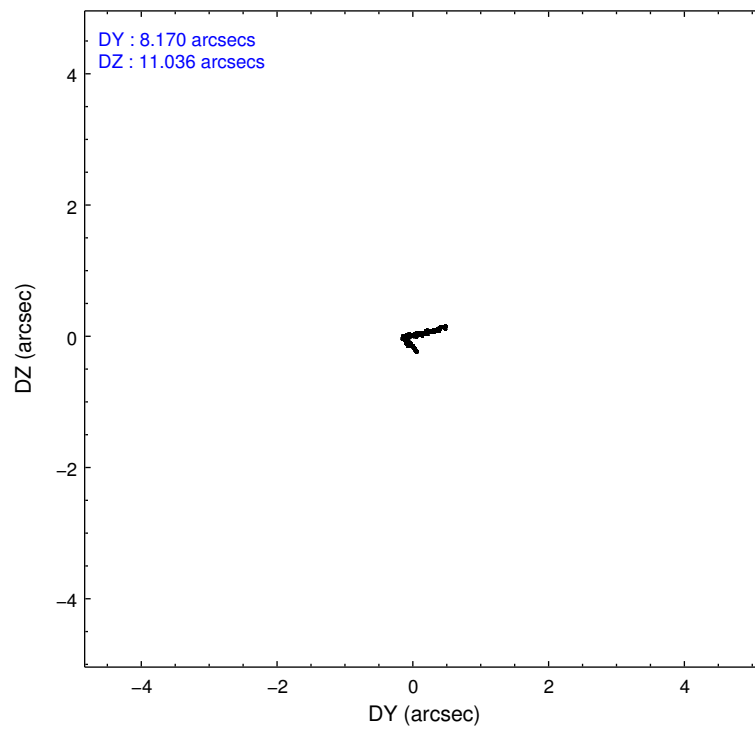
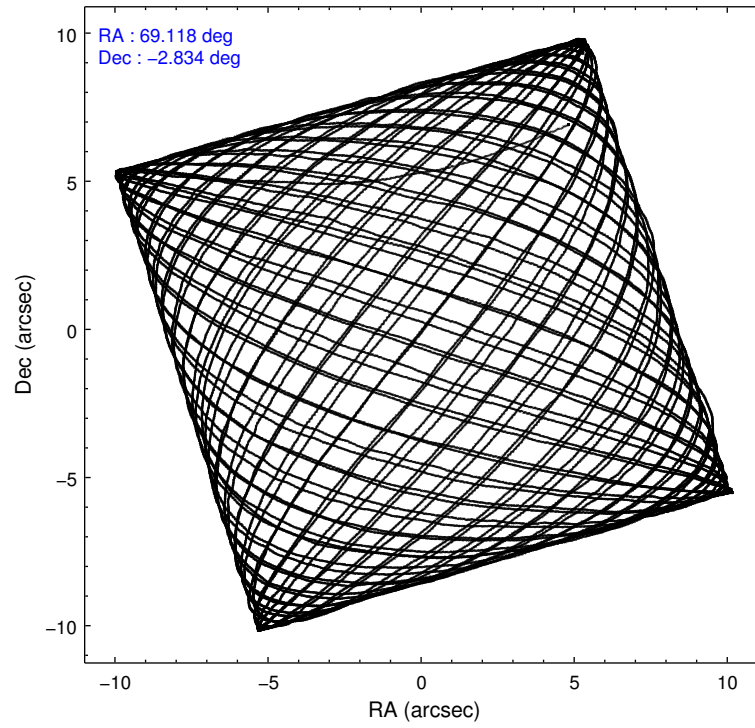
	ccd 2	ccd 3	ccd 5	ccd 6	ccd 7
level 1 events	222289	212775	293737	213933	240313
rejected events	202218	193386	145473	192273	130199
rejected %	90%	90%	49%	89%	54%

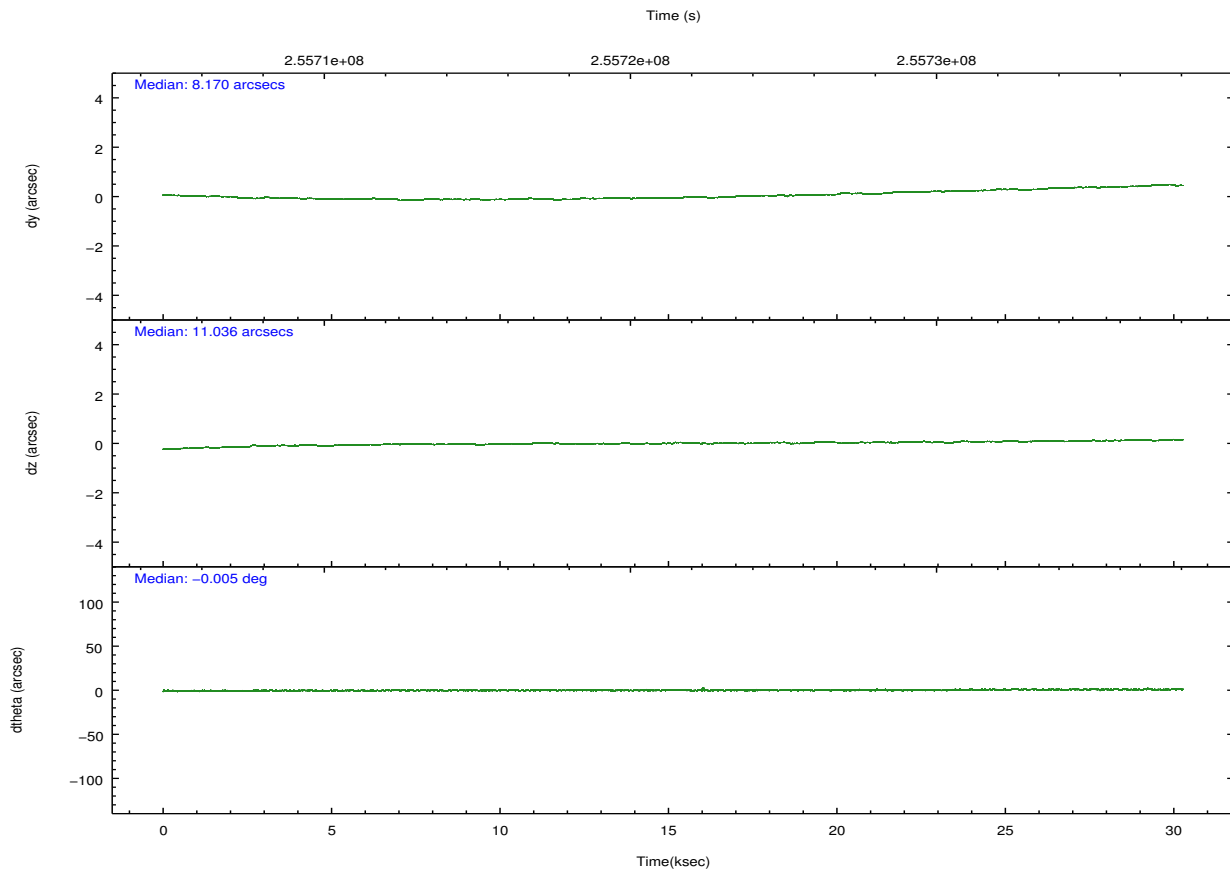
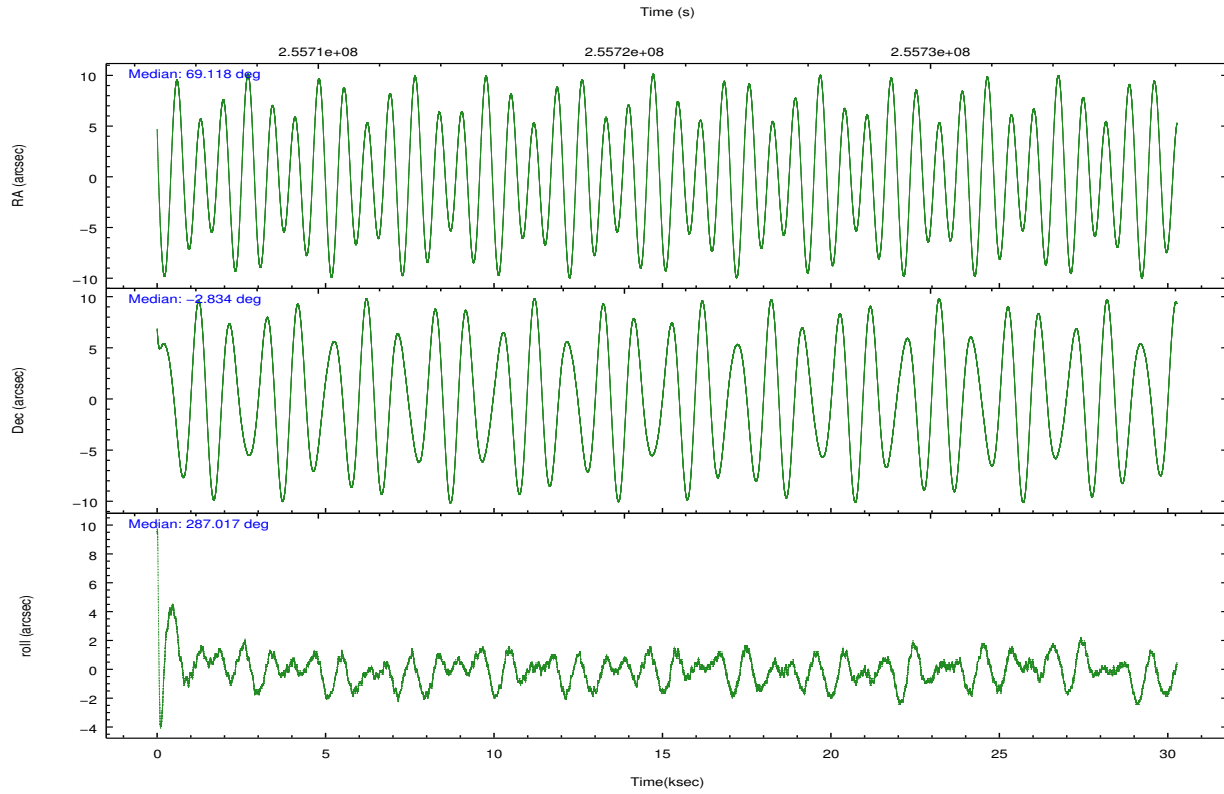
	ccd 2	ccd 3	ccd 5	ccd 6	ccd 7
grade 0 events	7358	6841	17993	7626	11013
	3%	3%	6%	3%	4%
grade 1 events	108	106	667	103	214
	0%	0%	0%	0%	0%
grade 2 events	4751	4167	43419	4682	22241
	2%	1%	14%	2%	9%
grade 3 events	2171	2216	6575	2430	10474
	0%	1%	2%	1%	4%
grade 4 events	2307	2210	6240	2362	10390
	1%	1%	2%	1%	4%
grade 5 events	6734	8437	23539	8529	25426
	3%	3%	8%	3%	10%
grade 6 events	3485	3955	74051	4562	56006
	1%	1%	25%	2%	23%
grade 7 events	195375	184843	121253	183639	104549
	87%	86%	41%	85%	43%

2.2 Compared Parameters

Parameter	Planned	Actual	Parameter	Planned	Actual
Instrument	ACIS	ACIS	Obspar format version number	7	7
Detector	ACIS-23567	ACIS-23567	Obspar file type	PREDICTED	ACTUAL
Grating	NONE	NONE	Obspar update status	NONE	UPDATED
Data mode	VFAINT	VFAINT	Number of optional ACIS chips dropped	0	0
Observation mode	POINTING	POINTING	On-chip summing requested	N	N
[deg] Pointing RA	69.097733	69.11792427232399	Subarray requested	NONE	NONE
[deg] Pointing Dec	-2.815897	-2.834173001391445	Alternating exposures requested	N	N
[deg] Pointing Roll	286.869701	287.0273299970585	[s] Primary exposure time	0.000000	3.1
[mm] SIM focus pos	-0.684267	-0.6828225247311905			
[mm] SIM defocus	0	0.001444936568705701			
[mm] SIM translation stage pos	-190.132523	-190.1400660498719			
[mm] SIM translation stage offset	0	0.00754346686406393			
[s] Observation start time (MET)	255706527.184000	255705553.20387			
Observation start date	2006-02-07T13:34:22	2006-02-07T13:19:13			
[s] Observation end time (MET)	255736527.184000	255737193.93034			
Observation end date	2006-02-07T21:54:22	2006-02-07T22:06:33			
Read mode	TIMED	TIMED			

2.3 Aspect



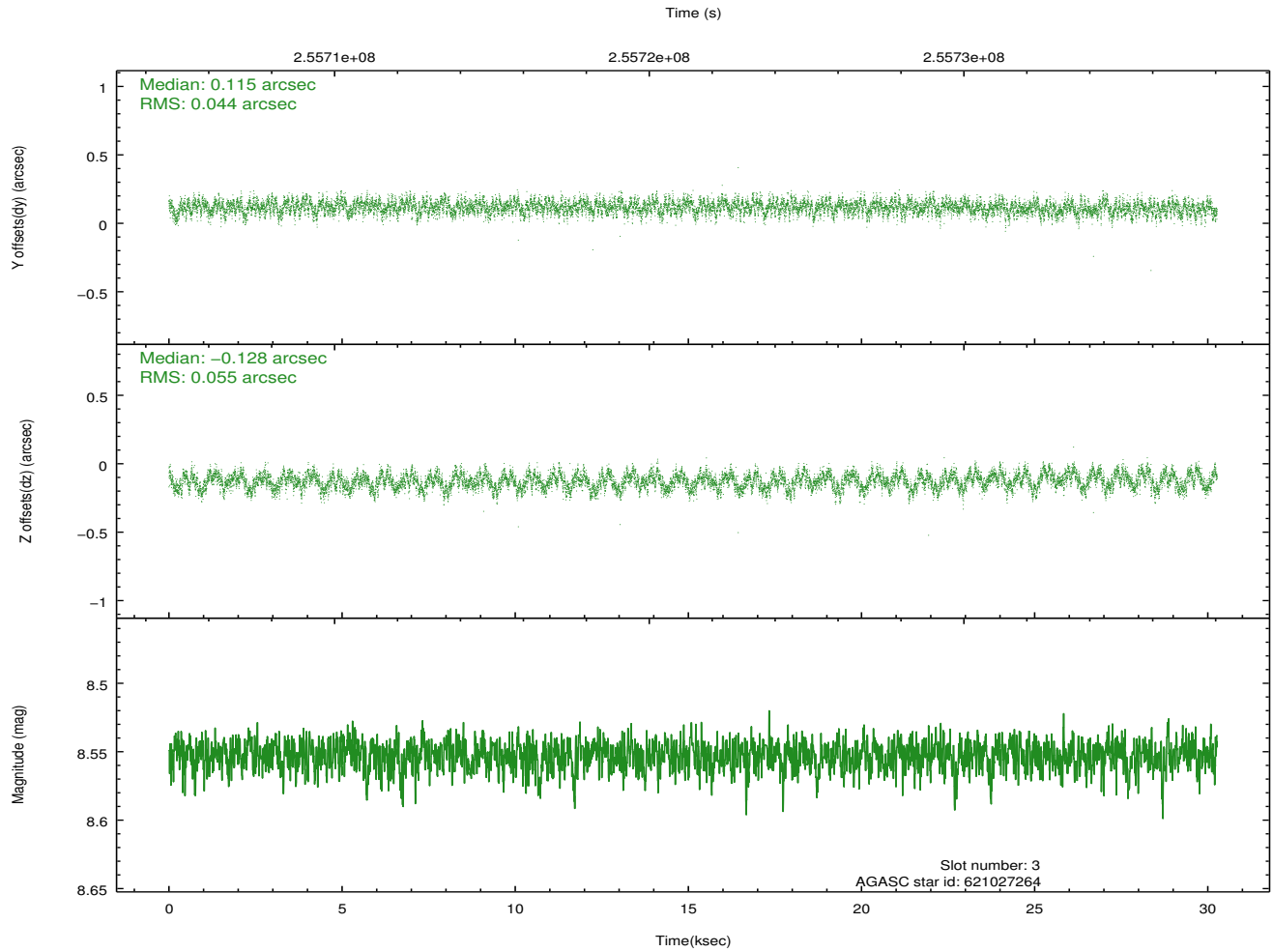
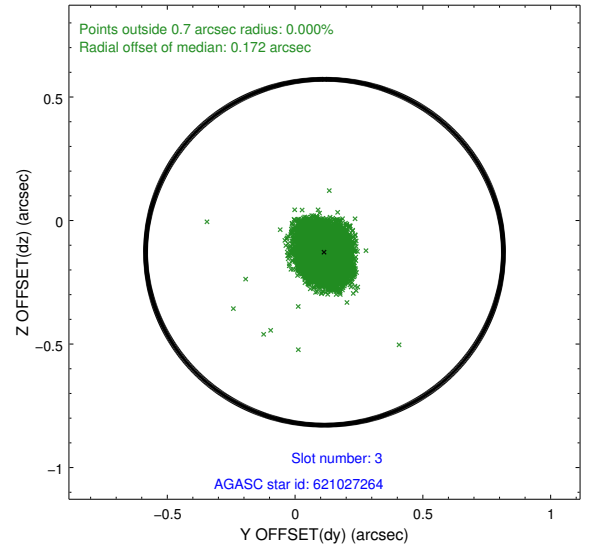
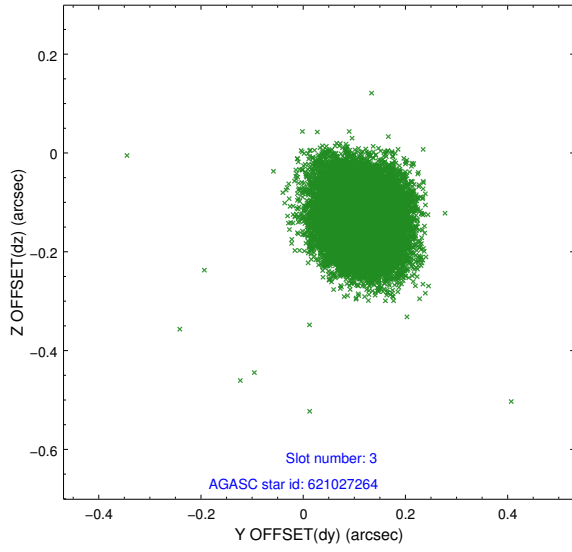


Slot Statistics

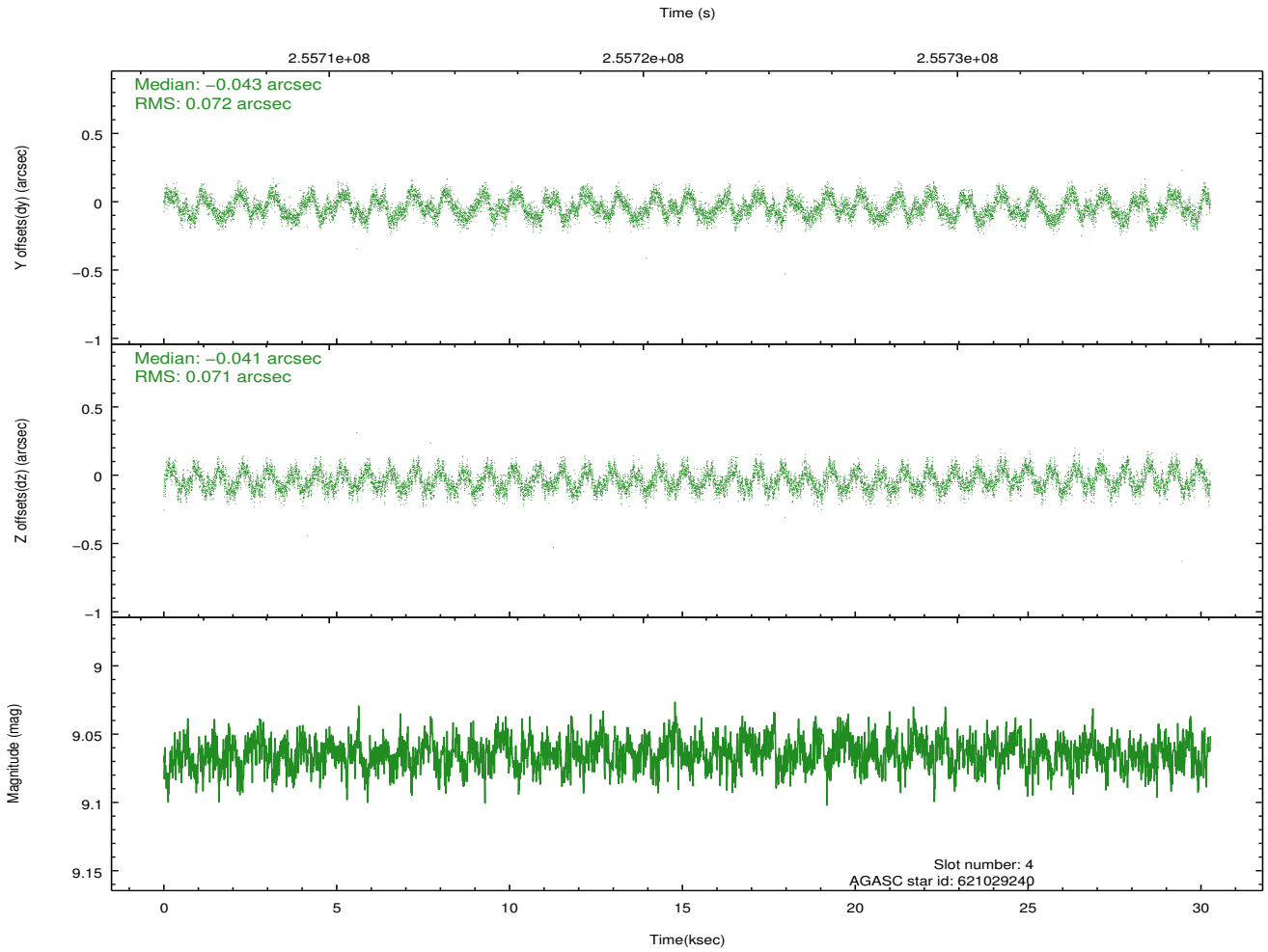
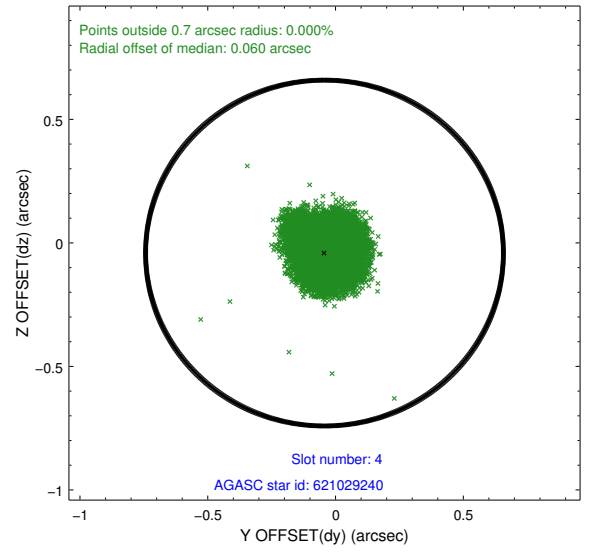
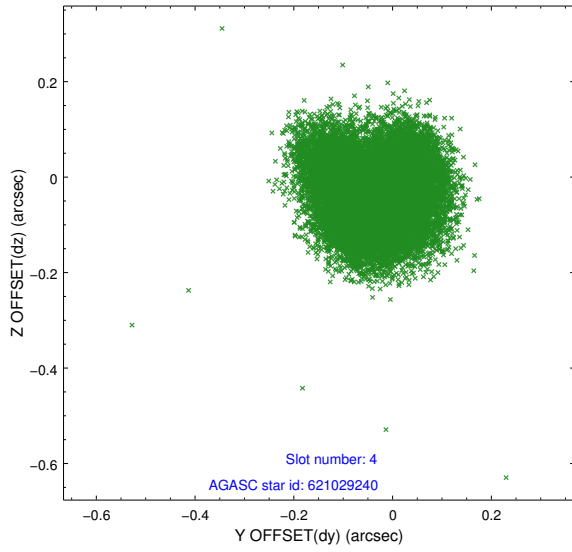
slot	status	id	mag	n_pts	med_dy	med_dz	dr1	dr2	ra	dec	mean_y	mean_z
0	FID	ACIS-S-2	7.11	7383	-0.043	-0.024	0.010	0.022	0.000000	0.000000	-761.02	-1732.34
1	FID	ACIS-S-4	7.21	7383	0.138	0.028	0.009	0.019	0.000000	0.000000	2152.36	176.17
2	FID	ACIS-S-5	7.23	7383	-0.126	0.005	0.008	0.014	0.000000	0.000000	-1813.89	169.82
3	GUIDE	621027264	8.55	14761	0.115	-0.128	0.075	0.119	68.757328	-3.353382	1497.77	-1732.10
4	GUIDE	621029240	9.06	14760	-0.043	-0.041	0.110	0.164	68.874787	-3.150671	921.53	-1116.52
5	GUIDE	621150488	8.81	14752	-0.127	0.018	0.068	0.111	69.381004	-2.536201	-667.64	1267.11
6	GUIDE	621152560	8.84	14762	0.035	0.145	0.077	0.122	69.453503	-2.701542	-22.35	1344.08
7	GUIDE	621154808	7.05	14766	0.015	0.003	0.067	0.102	69.428429	-2.646508	-238.09	1315.18

2.4 Star Slots

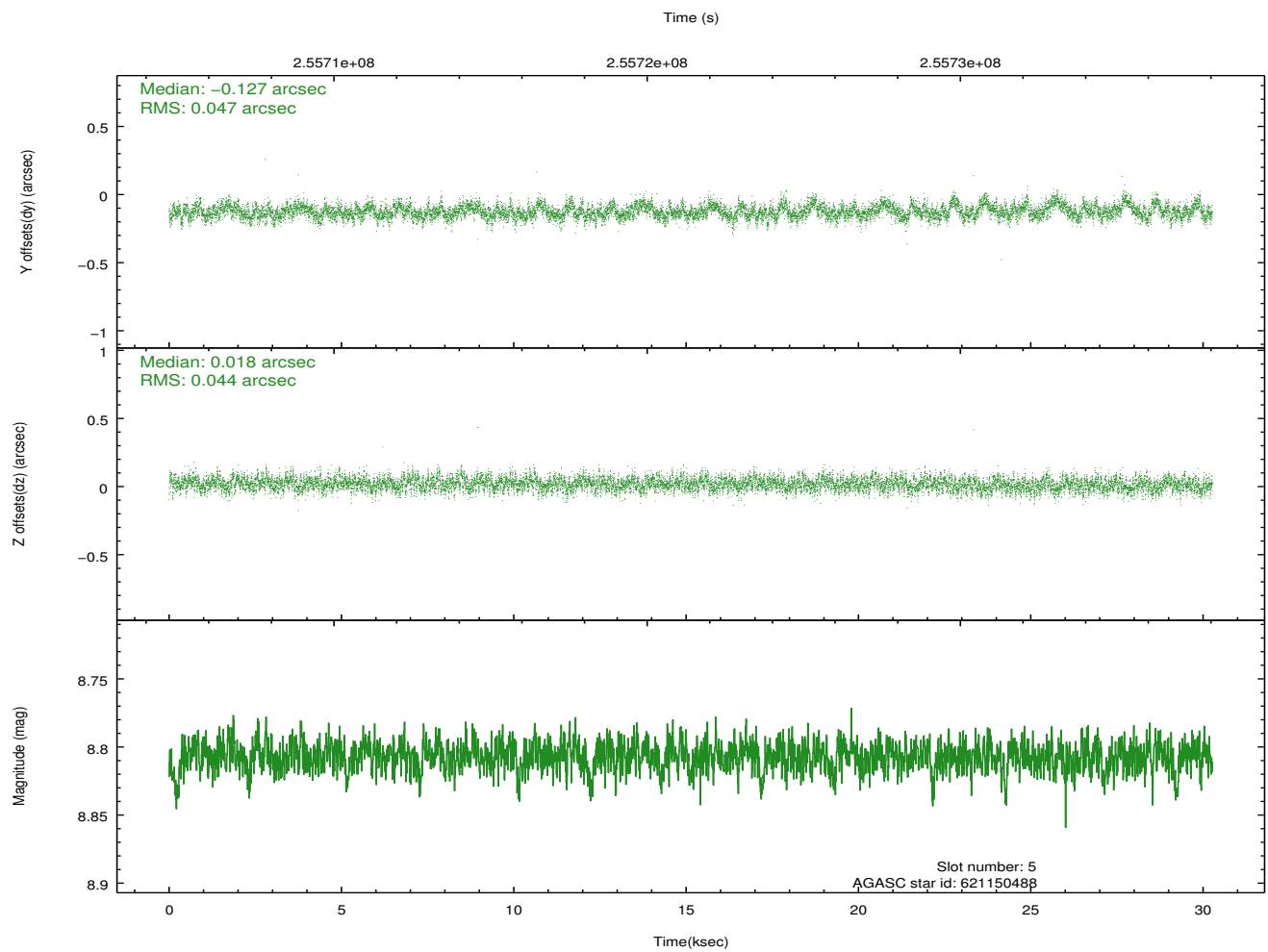
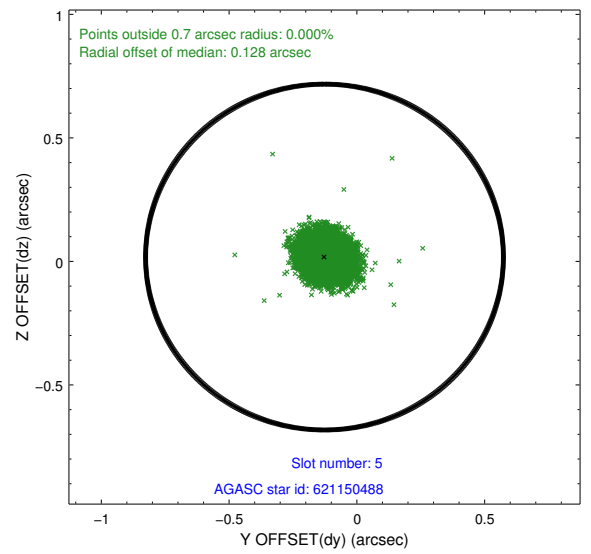
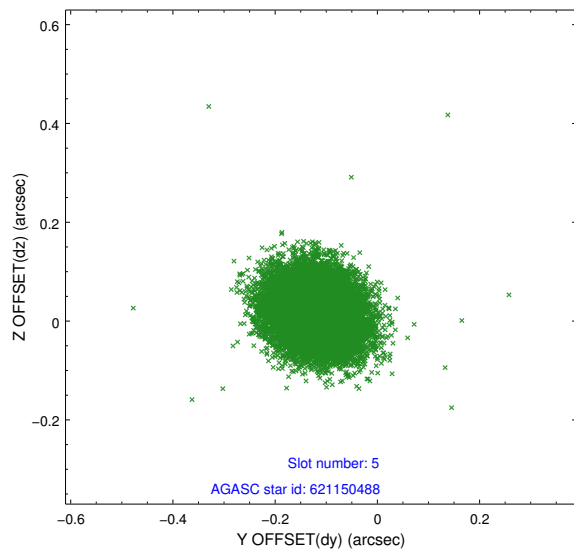
2.4.1 Slot 3



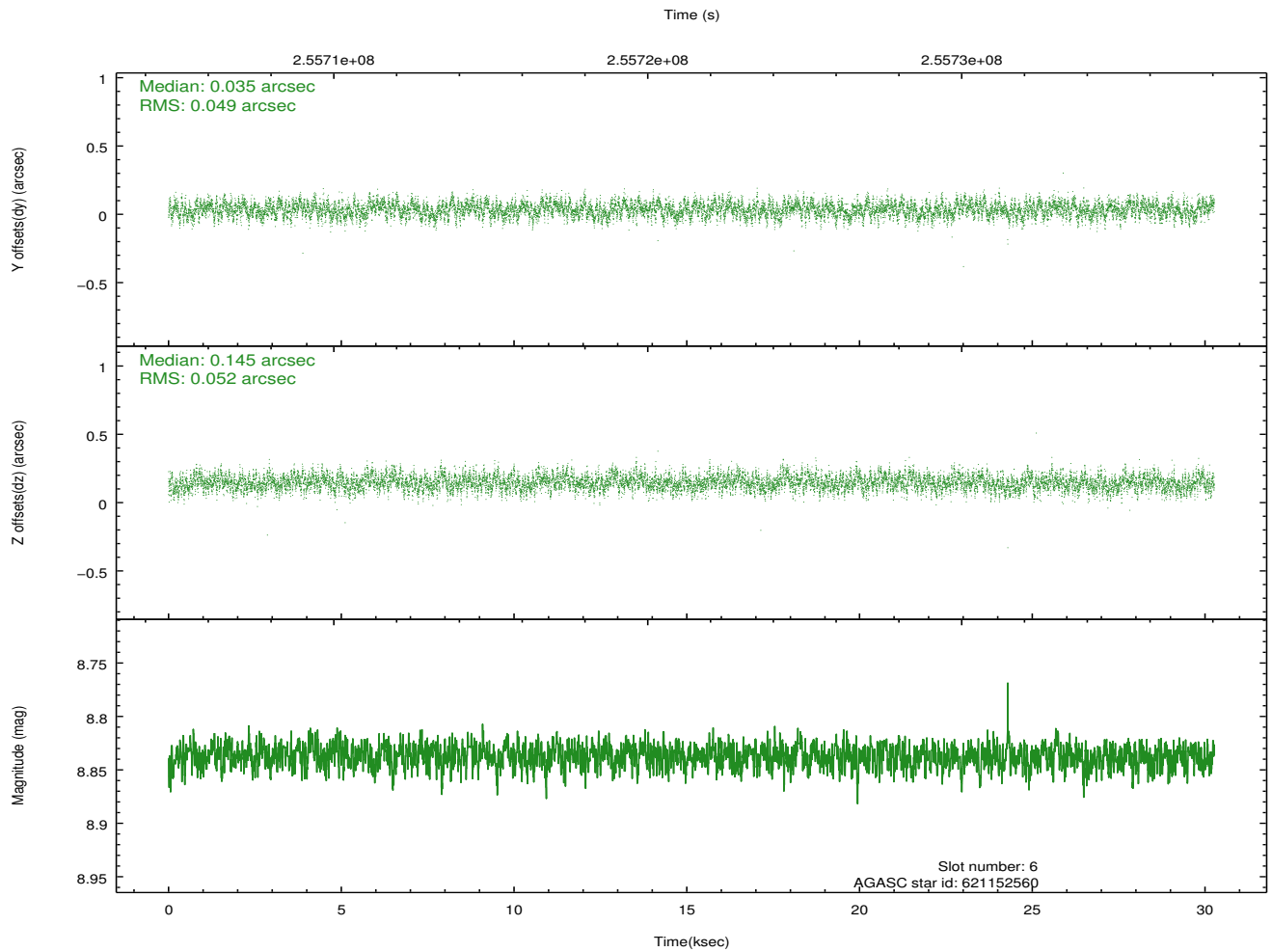
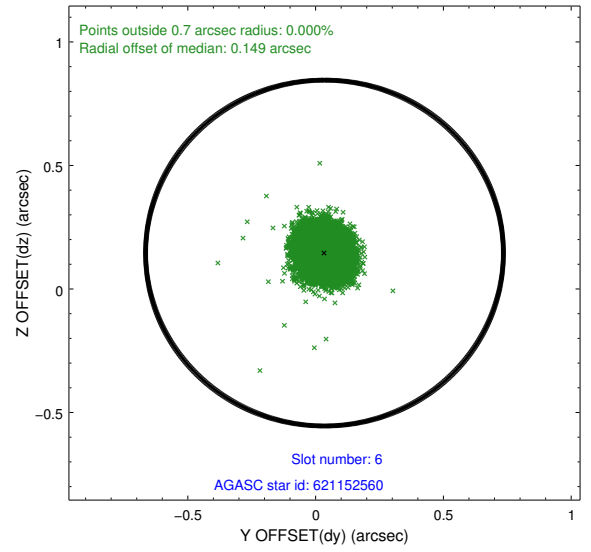
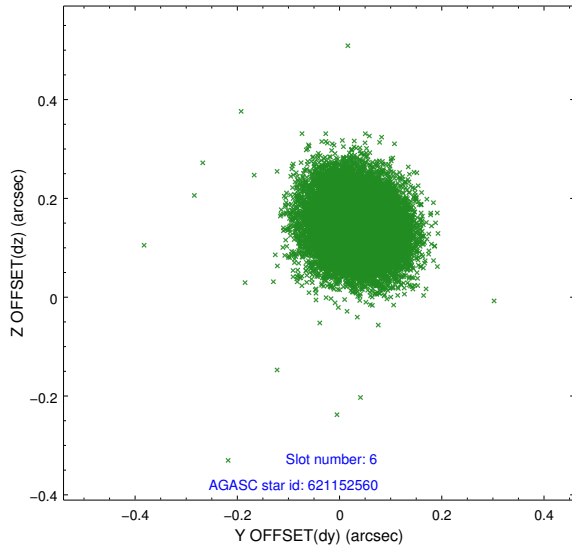
2.4.2 Slot 4



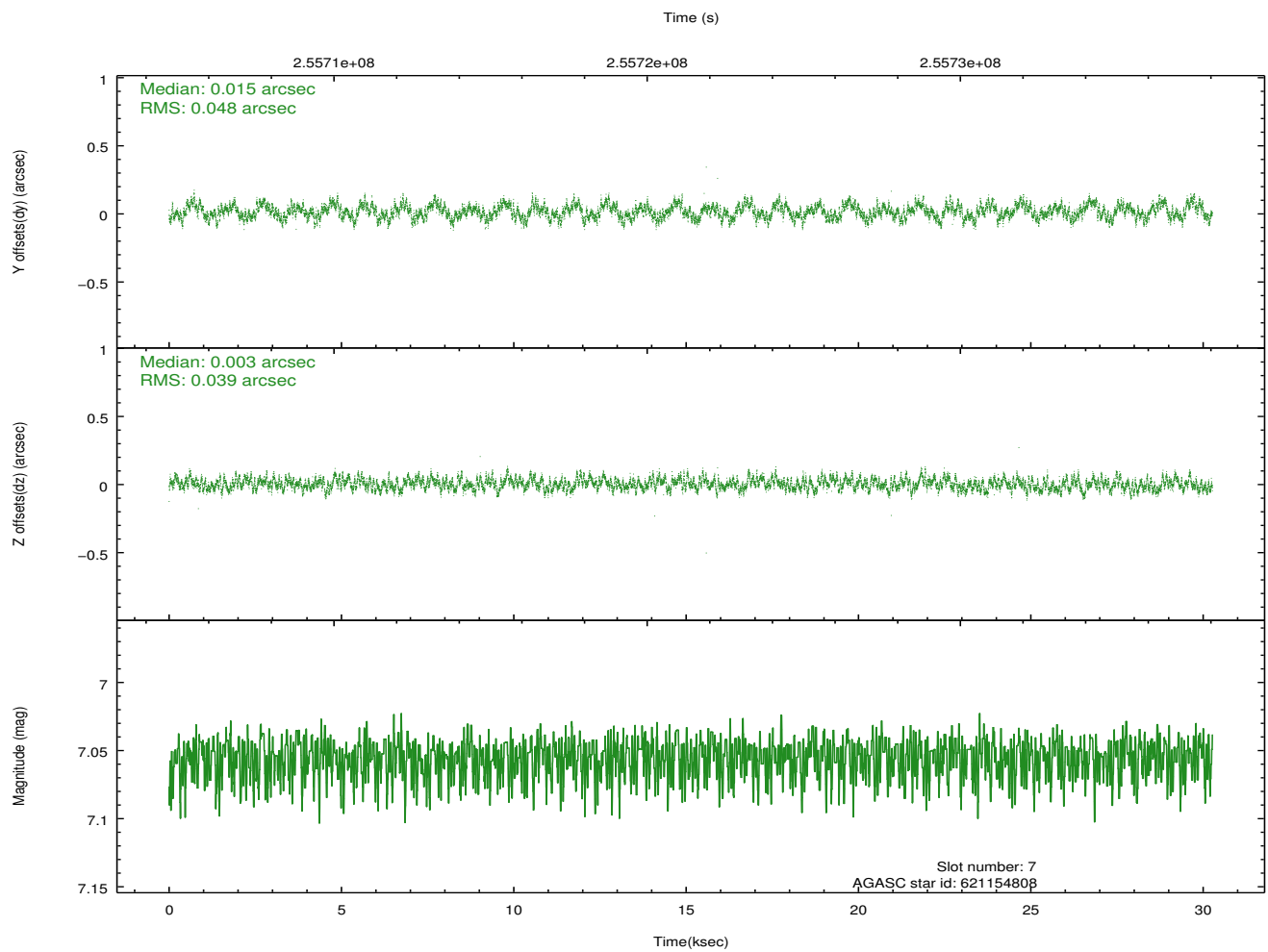
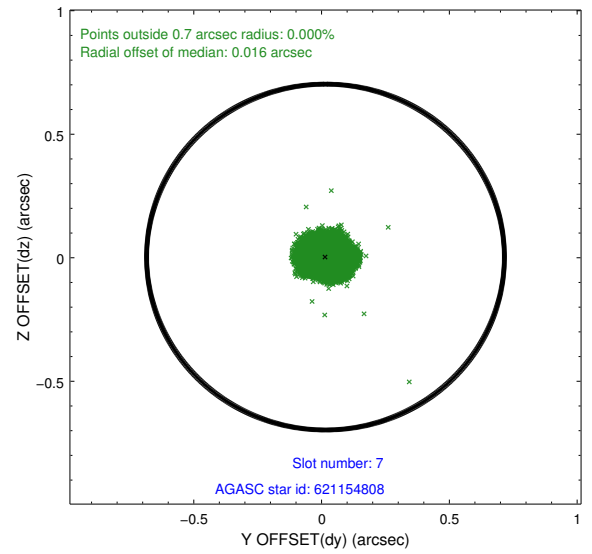
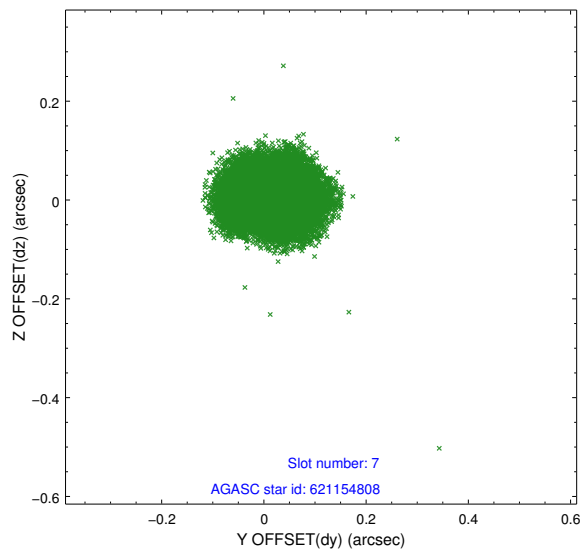
2.4.3 Slot 5



2.4.4 Slot 6

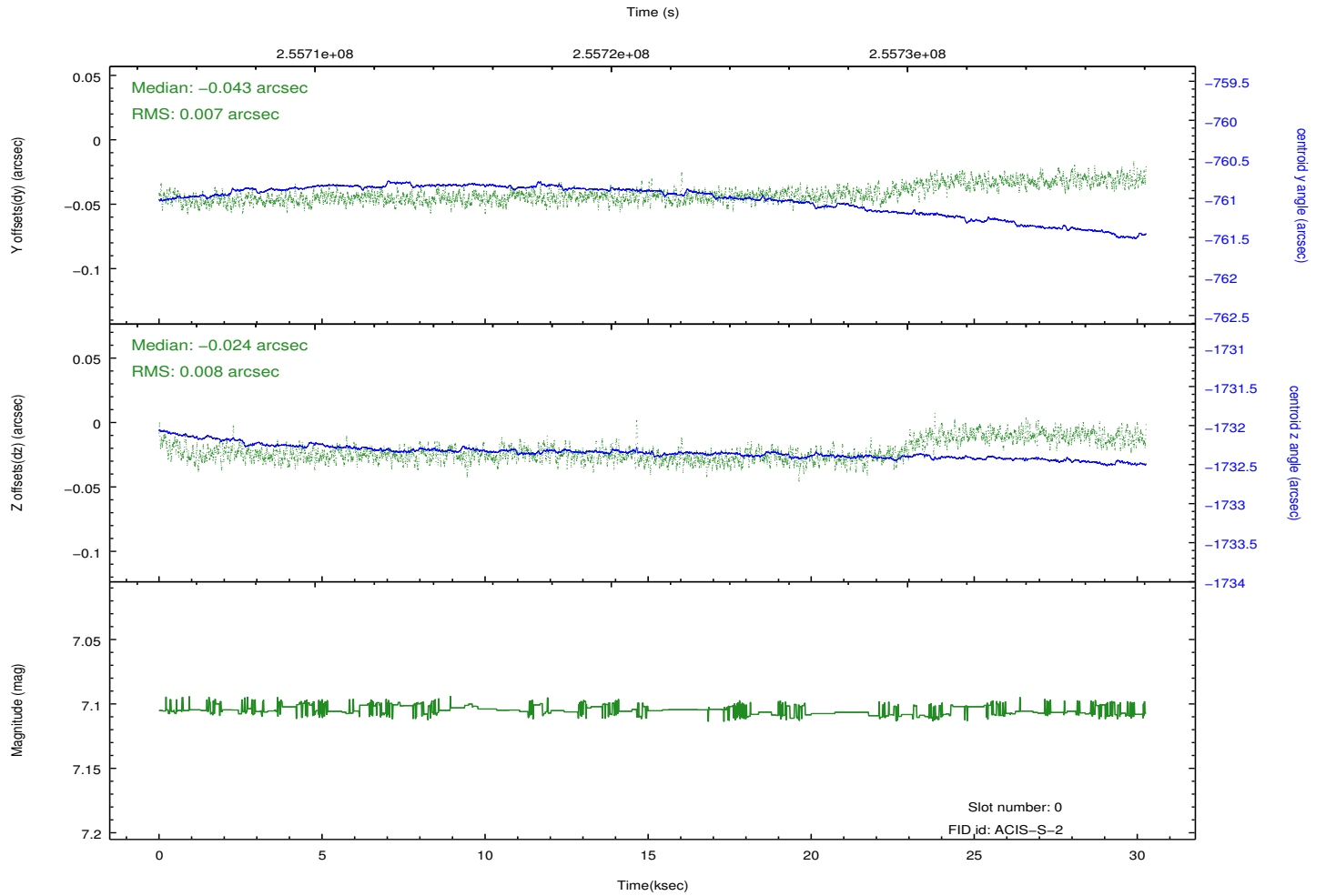
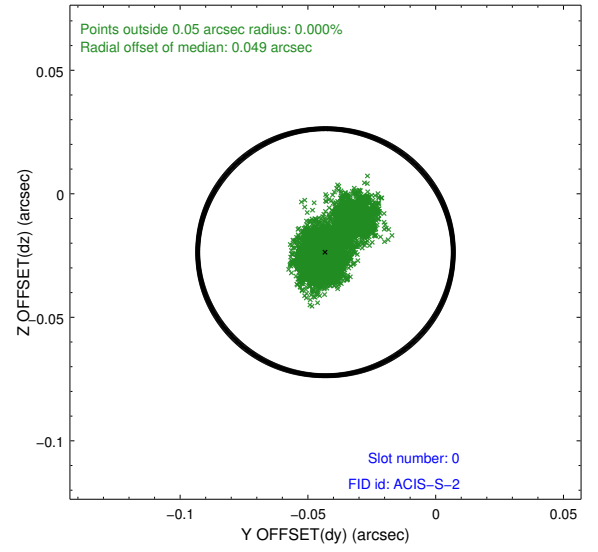
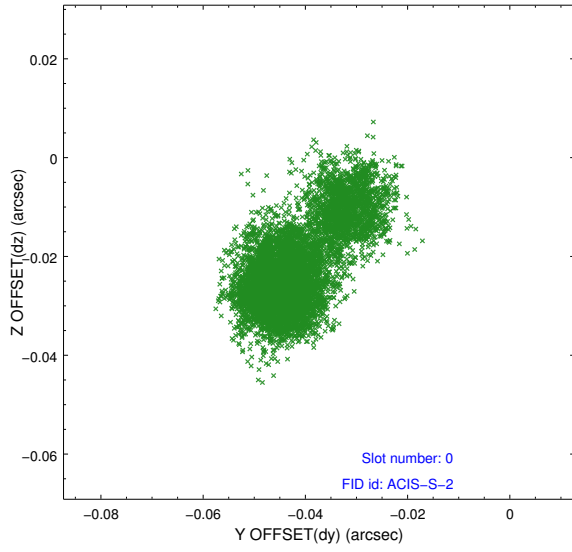


2.4.5 Slot 7

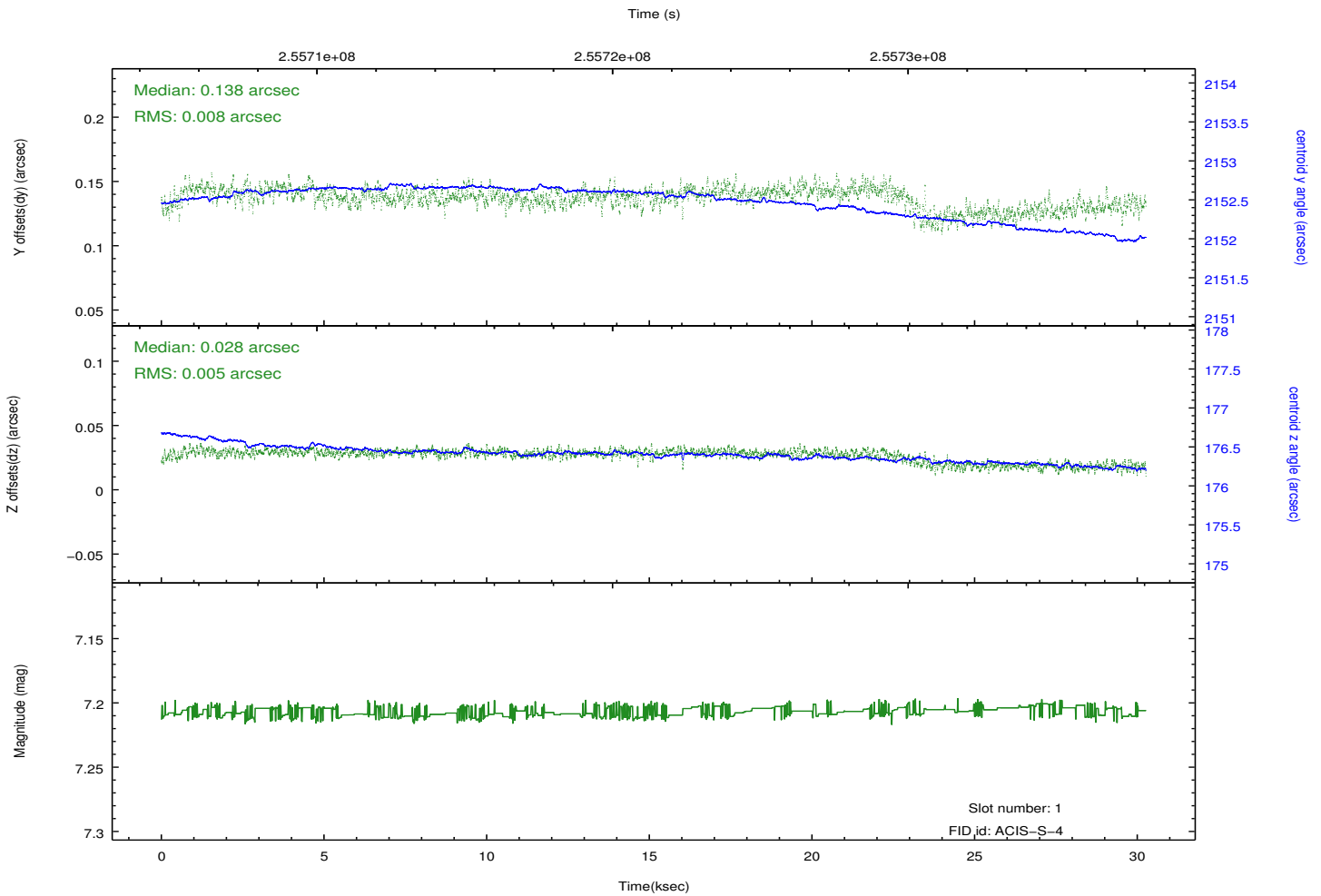
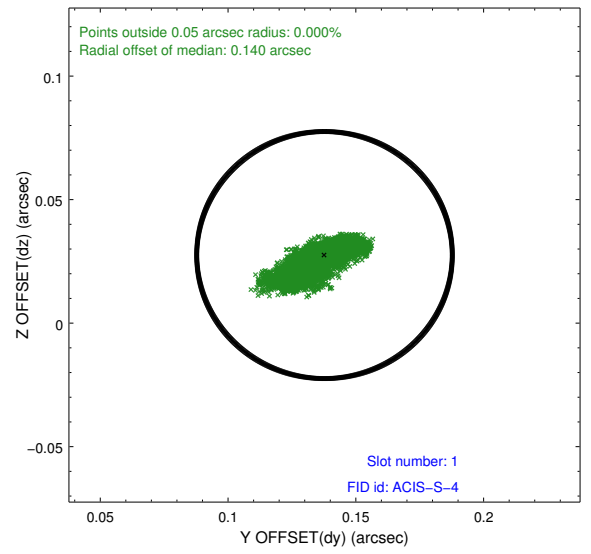
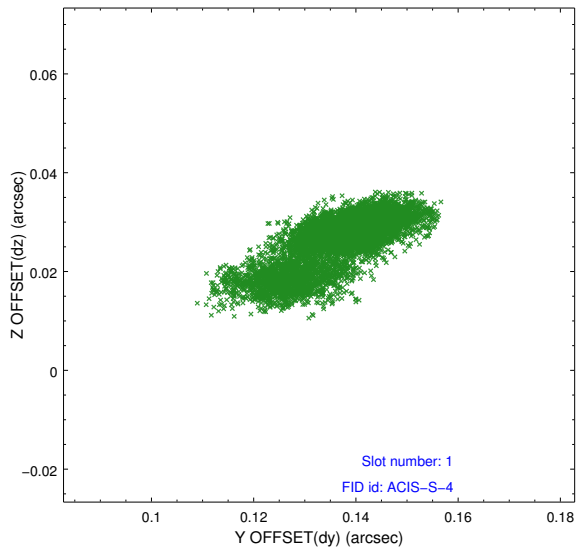


2.5 FID Slots

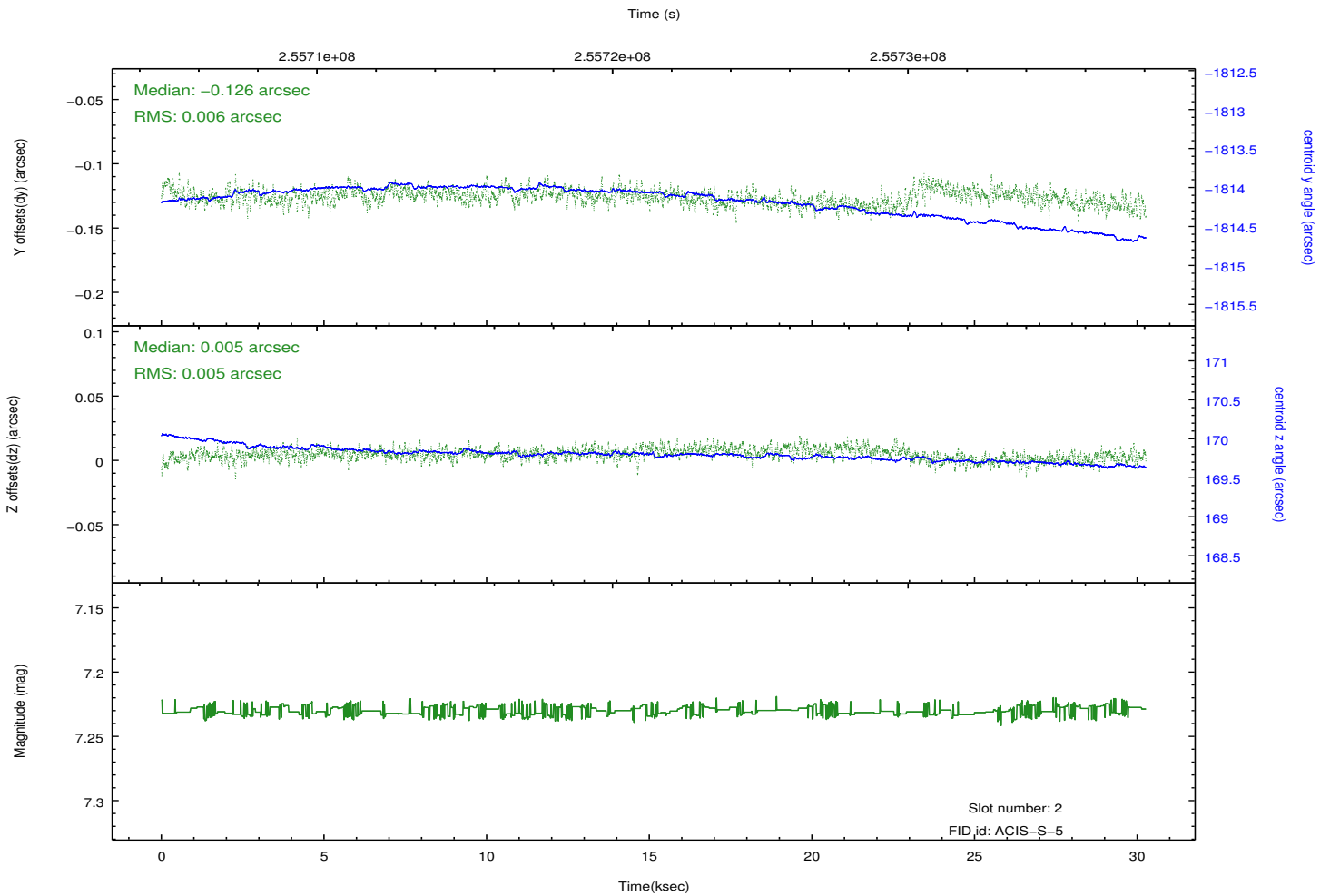
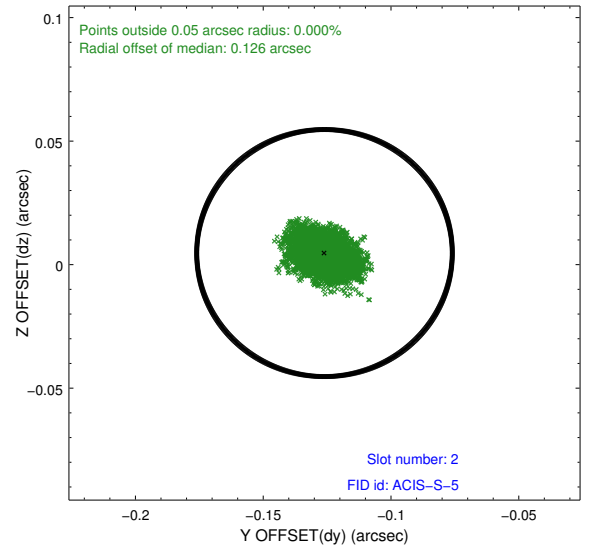
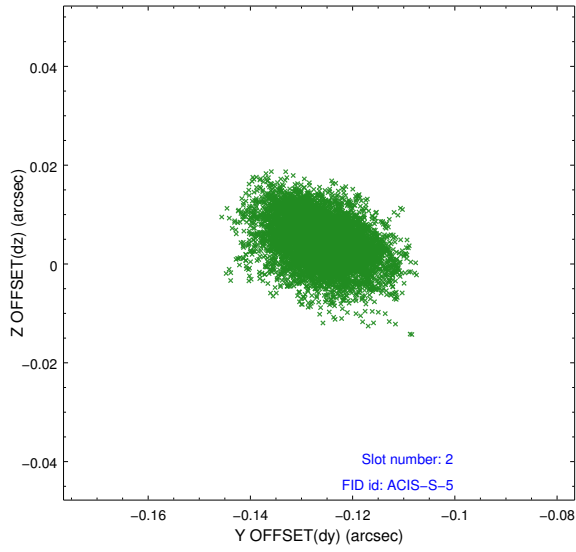
2.5.1 Slot 0



2.5.2 Slot 1



2.5.3 Slot 2



A Summary

A.1 Status

V&V Scientist	Beth Sundheim
V&V Date (YYYY-MM-DD)	2012.03.27
V&V Edition	1
V&V Disposition and Status	OK
V&V Charge Time	30.0389999

A.2 Comments