

V&V Reference Report

L2 ASCDS Version : 8.4.4

Observation 7427 - L2 Version 3
Chandra X-Ray Center

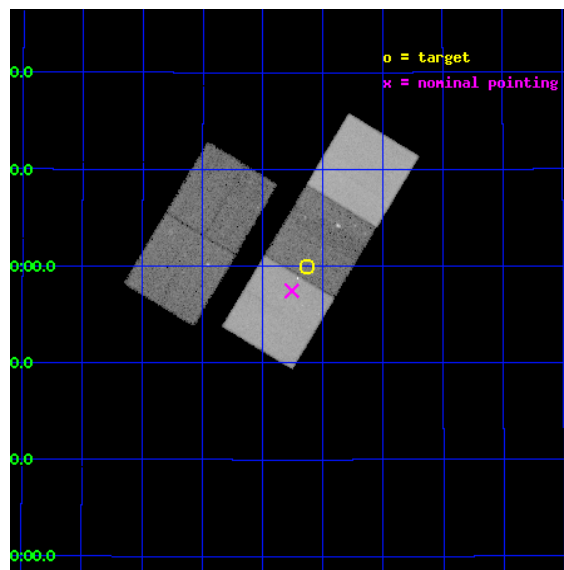
L2 Processing Date : Apr 24 2012

Contents

1	Front	2
2	OBI	3
2.1	OBI	3
2.1.1	Images	3
2.1.2	Bias	3
2.1.3	Parameters	4
2.1.4	Events	4
2.2	Compared Parameters	5
2.3	Aspect	6
2.4	Star Slots	9
2.4.1	Slot 3	9
2.4.2	Slot 4	10
2.4.3	Slot 5	11
2.4.4	Slot 6	12
2.4.5	Slot 7	13
2.5	FID Slots	14
2.5.1	Slot 0	14
2.5.2	Slot 1	15
2.5.3	Slot 2	16
A	Summary	17
A.1	Status	17
A.2	Comments	17

1 Front

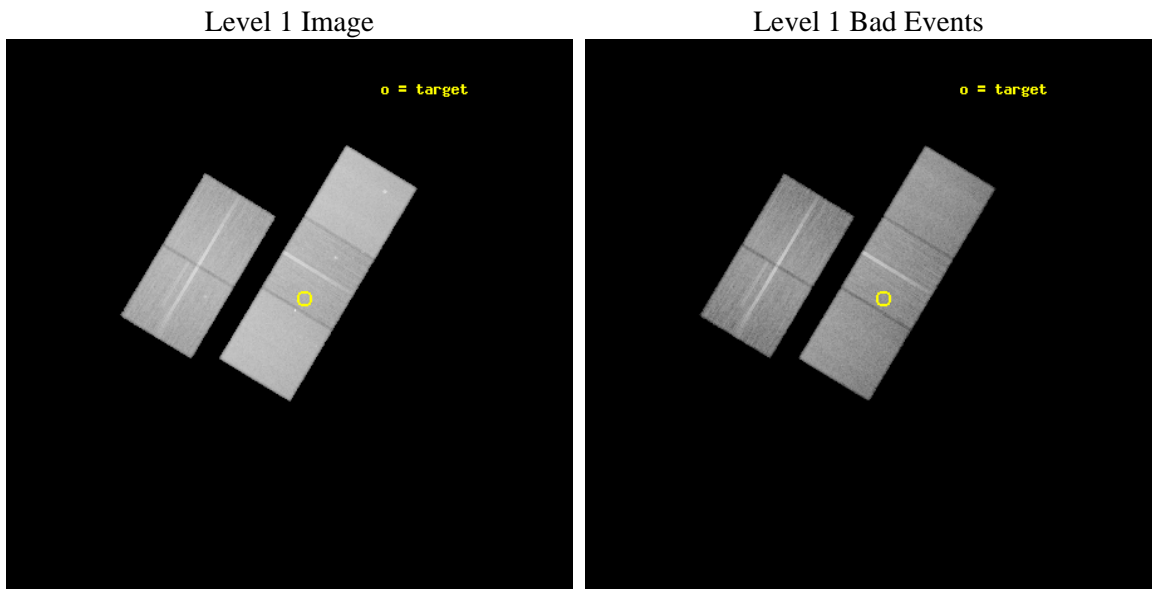
seq_num	200440	Sequence number
obs_id	7427	Observation id
title	The Full Picture of Magnetic Activity in Ultracool Dwarfs: Simultaneous Observations of Coronae and Chromospheres	Proposal title
observer	Prof. Edo Berger	Principal investigator
object	LSR1835+32	Source name
dtcycle	0	
cycle	P	events from which exps? Prim/Second/Both
ra_targ	278.907917	Observer's specified target RA [deg]
dec_targ	32.9985	Observer's specified target Dec [deg]
ra_nom	278.93938777378	Nominal RA [deg]
dec_nom	32.957528569356	Nominal Dec [deg]
roll_nom	121.05102882054	Nominal Roll [deg]
revision	3	Processing version of data
ontime	28709.100220799	Sum of GTIs [s]
livetime	28333.994691083	Livetime [s]
ontime2	28709.100220799	Sum of GTIs [s]
ontime3	28709.100220799	Sum of GTIs [s]
ontime5	28709.100220799	Sum of GTIs [s]
ontime6	28709.100220799	Sum of GTIs [s]
ontime7	28709.100220799	Sum of GTIs [s]
l2events	426715	Number of level 2 events



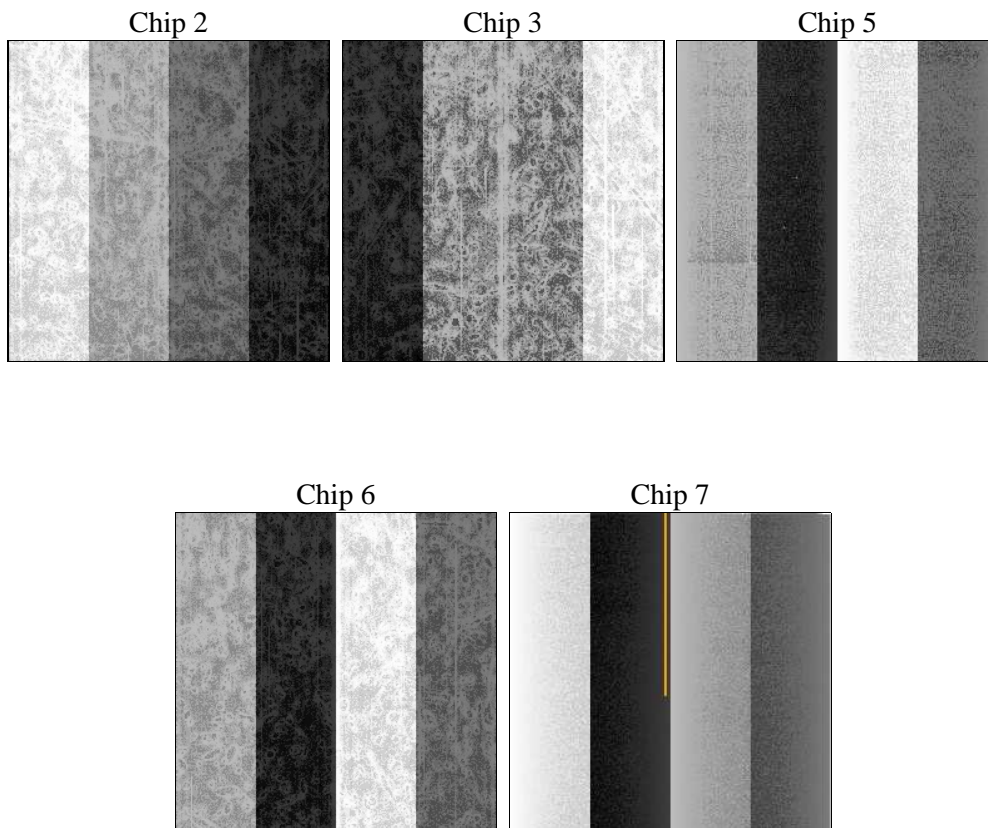
2 OBI

2.1 OBI

2.1.1 Images



2.1.2 Bias



2.1.3 Parameters

obi_num	1	Obi number	sched_exp_time	28677.000000	[s] Scheduled observation exposure time
ascdsver	8.4.4	Processing system revision	ontime	28709.100220799	Sum of GTIs [s]
caldbver	4.4.9	 	ontime2	28709.100220799	Sum of GTIs [s]
date	2012-04-24T09:32:53	Date and time of file creation	ontime3	28709.100220799	Sum of GTIs [s]
revision	3	Processing version of data	ontime5	28709.100220799	Sum of GTIs [s]
			ontime6	28709.100220799	Sum of GTIs [s]
			ontime7	28709.100220799	Sum of GTIs [s]
			l1events	1636131	Number of level 1 events

2.1.4 Events

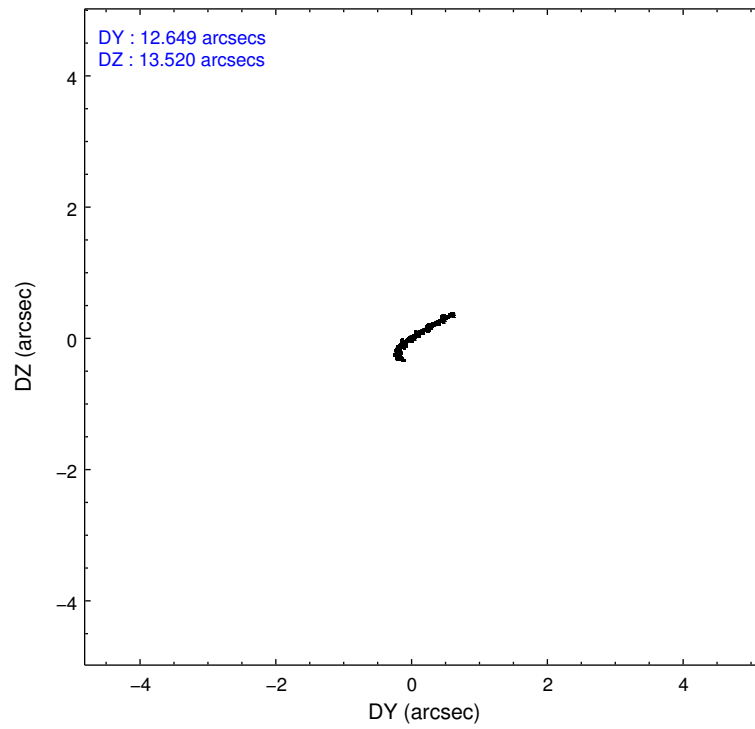
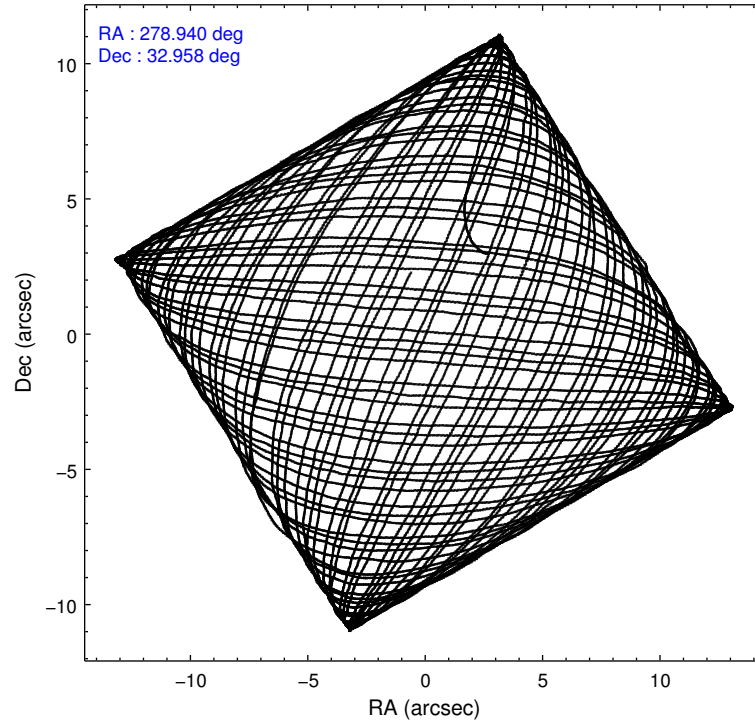
	ccd 2	ccd 3	ccd 5	ccd 6	ccd 7
level 1 events	276031	270902	418057	288493	382648
rejected events	243914	238307	229281	254124	223627
rejected %	88%	87%	54%	88%	58%

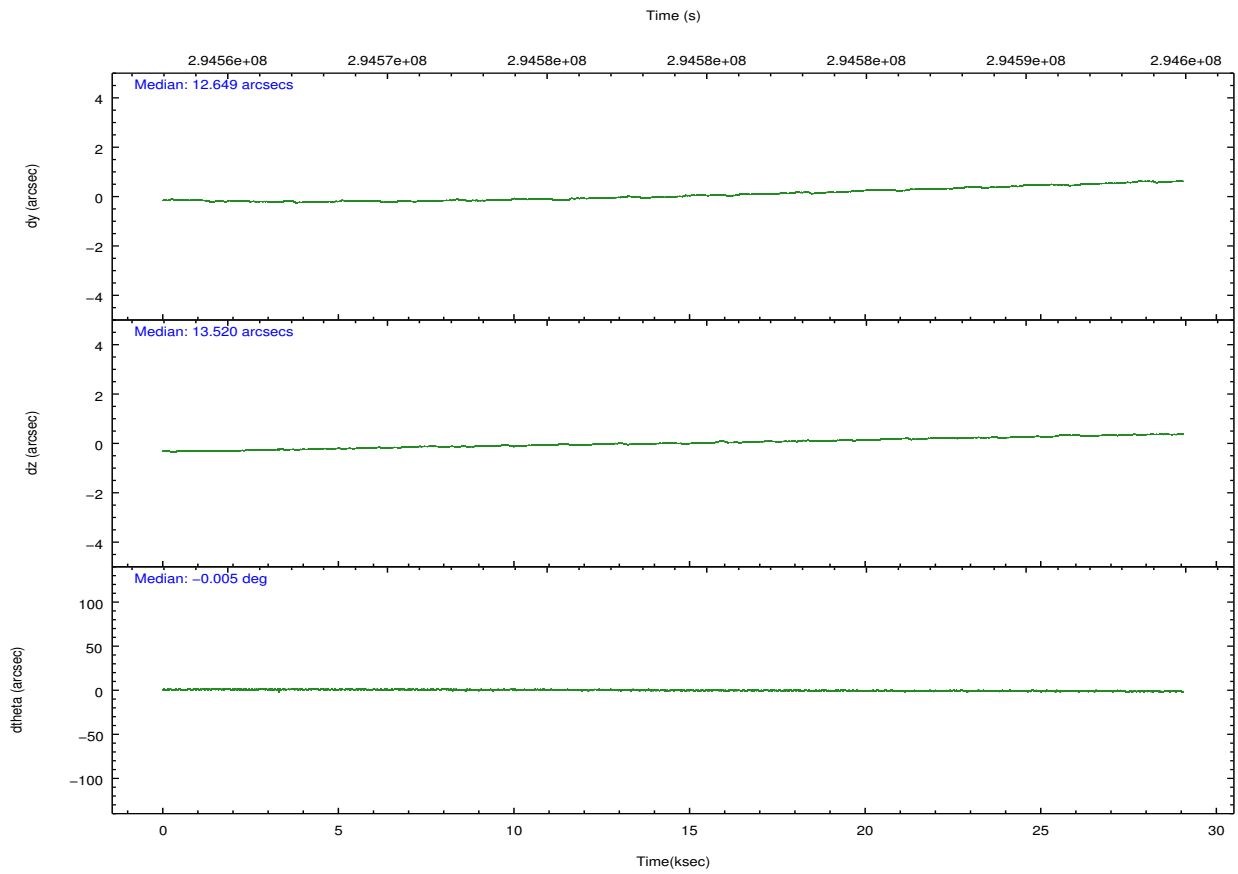
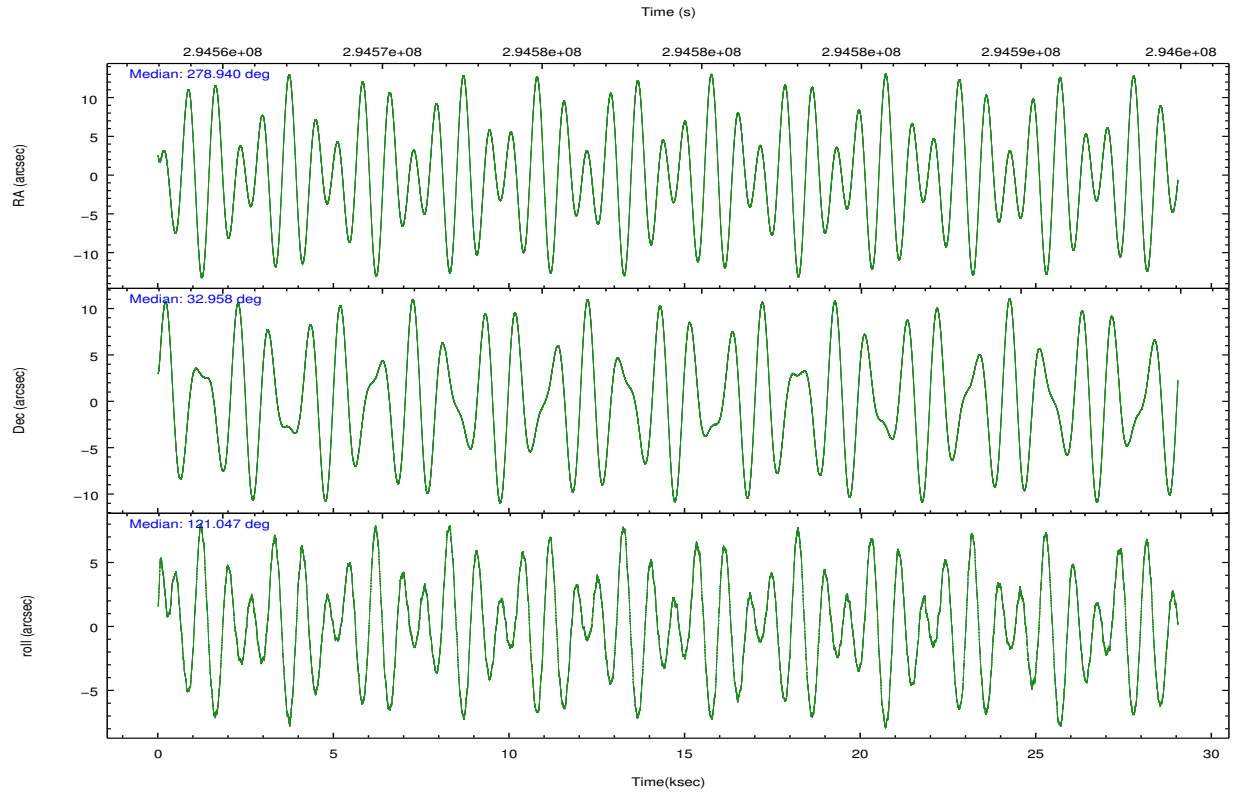
	ccd 2	ccd 3	ccd 5	ccd 6	ccd 7
grade 0 events	14294	14365	12332	13677	14158
	5%	5%	2%	4%	3%
grade 1 events	176	184	524	166	423
	0%	0%	0%	0%	0%
grade 2 events	6716	6188	58385	7422	32320
	2%	2%	13%	2%	8%
grade 3 events	2892	3154	7204	3241	13856
	1%	1%	1%	1%	3%
grade 4 events	2949	3212	6750	3172	13635
	1%	1%	1%	1%	3%
grade 5 events	10565	12859	30396	13074	35642
	3%	4%	7%	4%	9%
grade 6 events	5269	5679	104129	6860	85073
	1%	2%	24%	2%	22%
grade 7 events	233170	225261	198337	240881	187541
	84%	83%	47%	83%	49%

2.2 Compared Parameters

Parameter	Planned	Actual	Parameter	Planned	Actual
Instrument	ACIS	ACIS	Obspar format version number	7	7
Detector	ACIS-23567	ACIS-23567	Obspar file type	PREDICTED	ACTUAL
Grating	NONE	NONE	Obspar update status	NONE	UPDATED
Data mode	VFAINT	VFAINT	Number of optional ACIS chips dropped	0	0
Observation mode	POINTING	POINTING	On-chip summing requested	N	N
[deg] Pointing RA	278.968108	278.9393877737773	Subarray requested	NONE	NONE
[deg] Pointing Dec	32.944613	32.95752856935611	Alternating exposures requested	N	N
[deg] Pointing Roll	120.878781	121.0510288205418	[s] Primary exposure time	0.000000	3.1
[s] Window start time (MET)	294364865.184000	294364865.184000			
[s] Window stop time (MET)	299635265.184000	299635265.184000			
[mm] SIM focus pos	-0.684267	-0.6828225247311905			
[mm] SIM defocus	0	0.001444936568705701			
[mm] SIM translation stage pos	-190.132523	-190.1400660498719			
[mm] SIM translation stage offset	0	0.00754346686406393			
[s] Observation start time (MET)	294564787.184000	294563771.91994			
Observation start date	2007-05-03T07:32:02	2007-05-03T07:16:11			
[s] Observation end time (MET)	294593464.184000	294594190.33389			
Observation end date	2007-05-03T15:29:59	2007-05-03T15:43:10			
Read mode	TIMED	TIMED			

2.3 Aspect



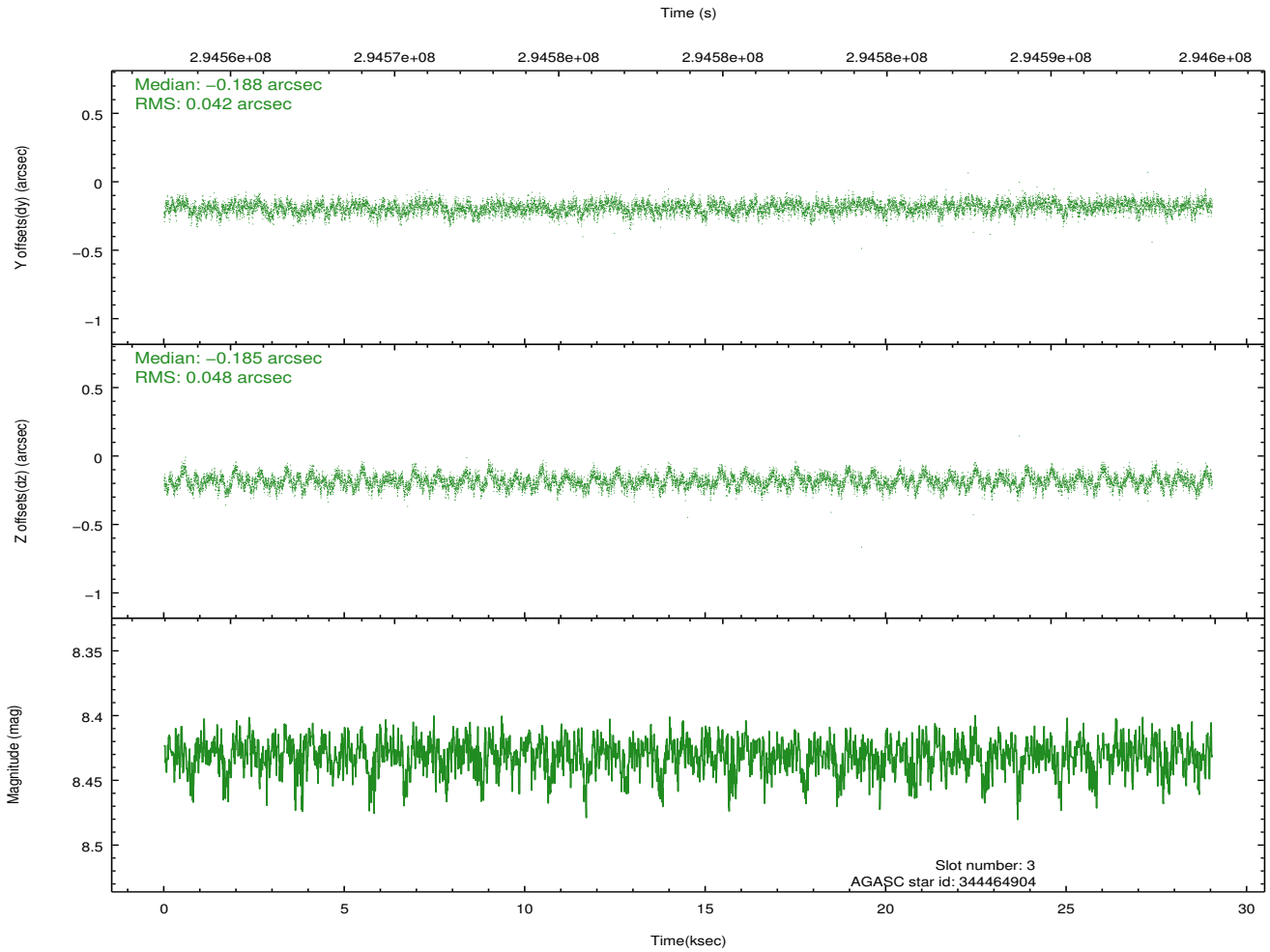
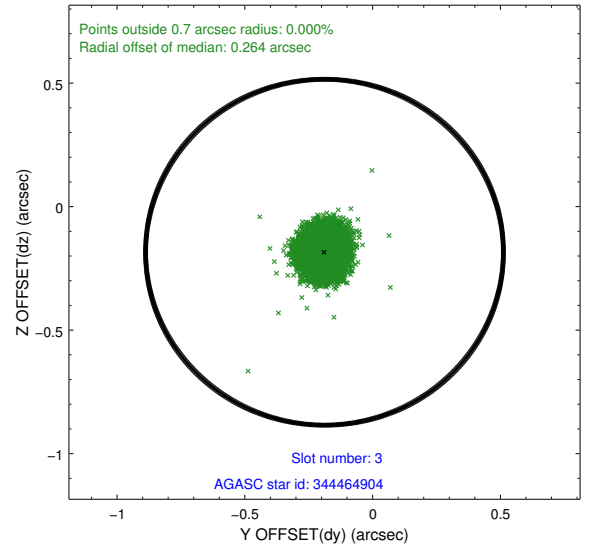
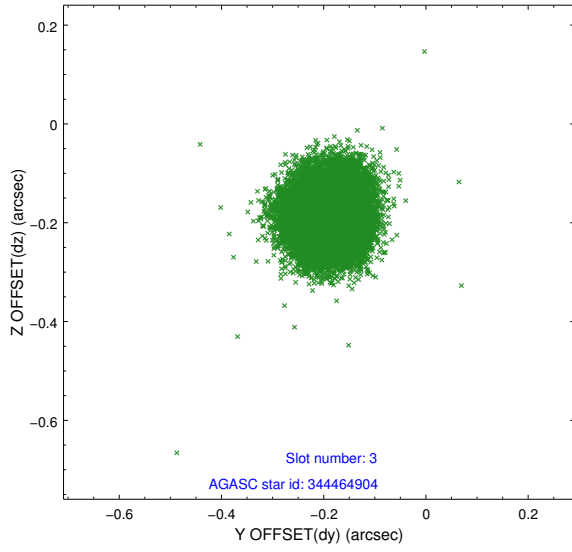


Slot Statistics

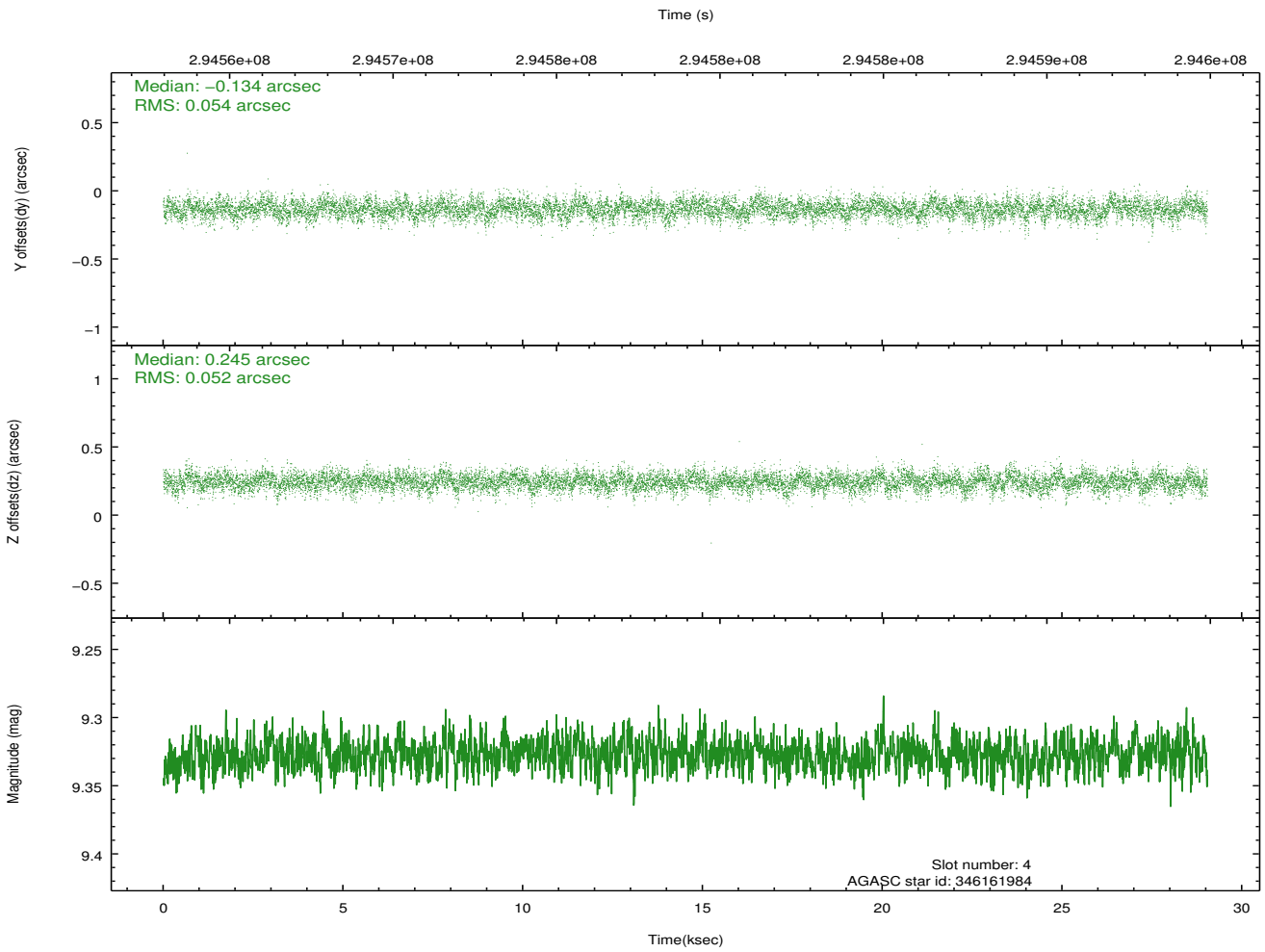
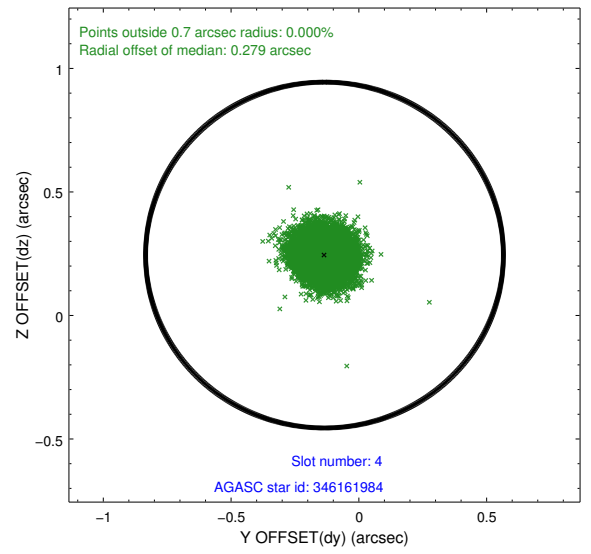
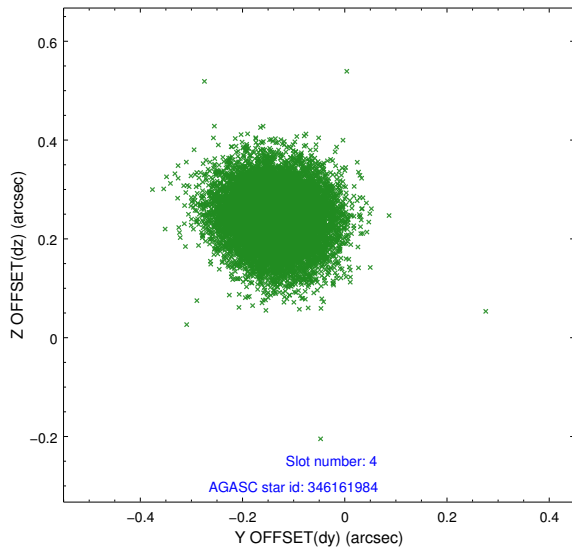
slot	status	id	mag	n_pts	med_dy	med_dz	dr1	dr2	ra	dec	mean_y	mean_z
0	FID	ACIS-S-1	7.18	7080	0.066	-0.026	0.009	0.016	0.000000	0.000000	930.44	-1730.55
1	FID	ACIS-S-4	7.19	7083	0.102	-0.009	0.017	0.034	0.000000	0.000000	2147.95	173.54
2	FID	ACIS-S-5	7.23	7082	-0.196	0.048	0.015	0.029	0.000000	0.000000	-1818.58	167.31
3	GUIDE	344464904	8.43	14149	-0.188	-0.185	0.069	0.108	278.255510	33.238188	2014.37	1295.67
4	GUIDE	346161984	9.33	14146	-0.134	0.245	0.079	0.129	279.085504	33.499118	1532.79	-1326.37
5	GUIDE	346174608	9.09	14154	0.036	0.217	0.085	0.135	279.762751	32.754419	-1814.28	-1717.80
6	GUIDE	344470160	8.83	14152	0.089	-0.101	0.066	0.108	278.797364	32.225309	-1955.30	1775.07
7	GUIDE	346176856	9.17	14157	0.197	-0.177	0.088	0.147	279.094962	32.258255	-2318.57	936.68

2.4 Star Slots

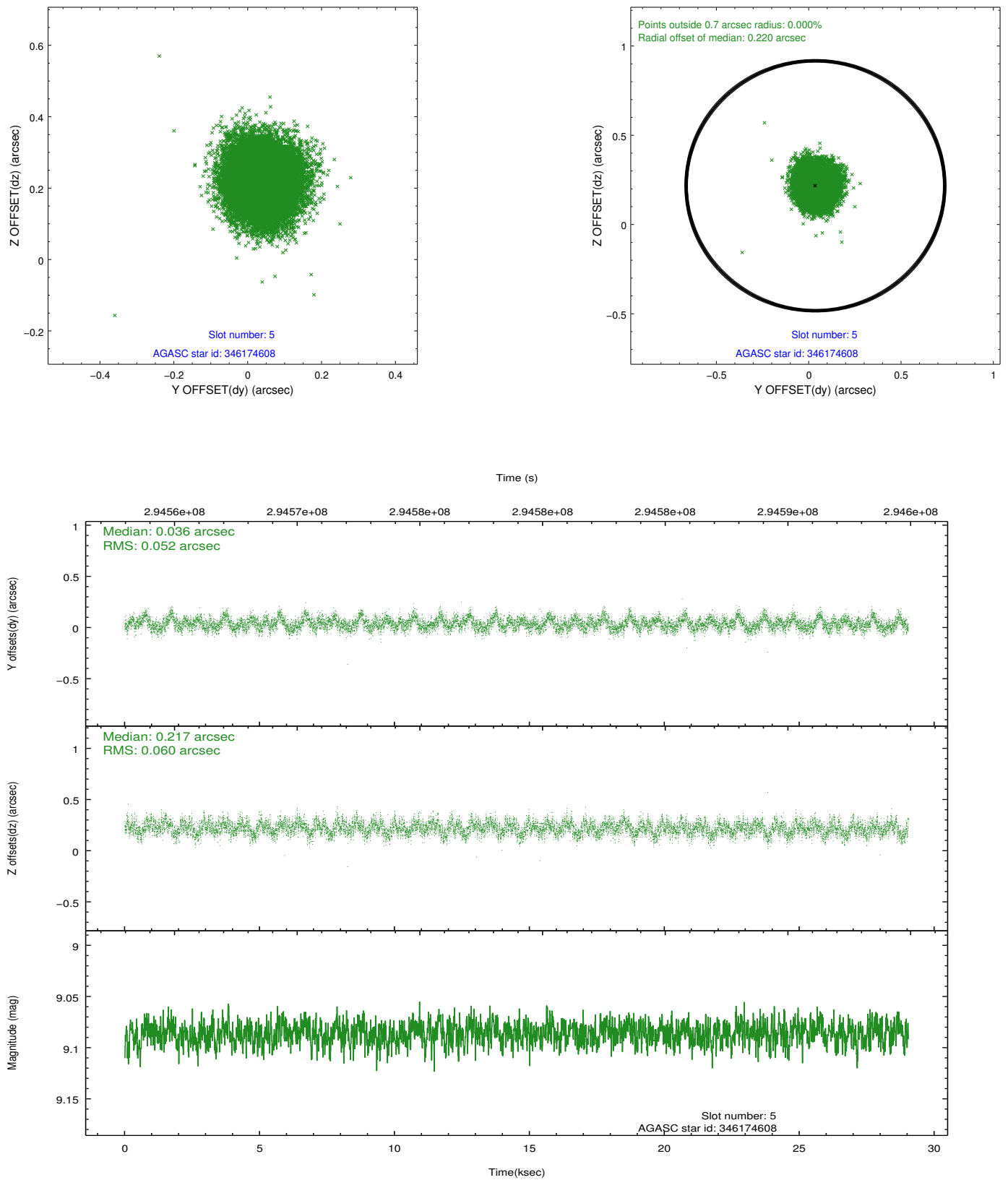
2.4.1 Slot 3



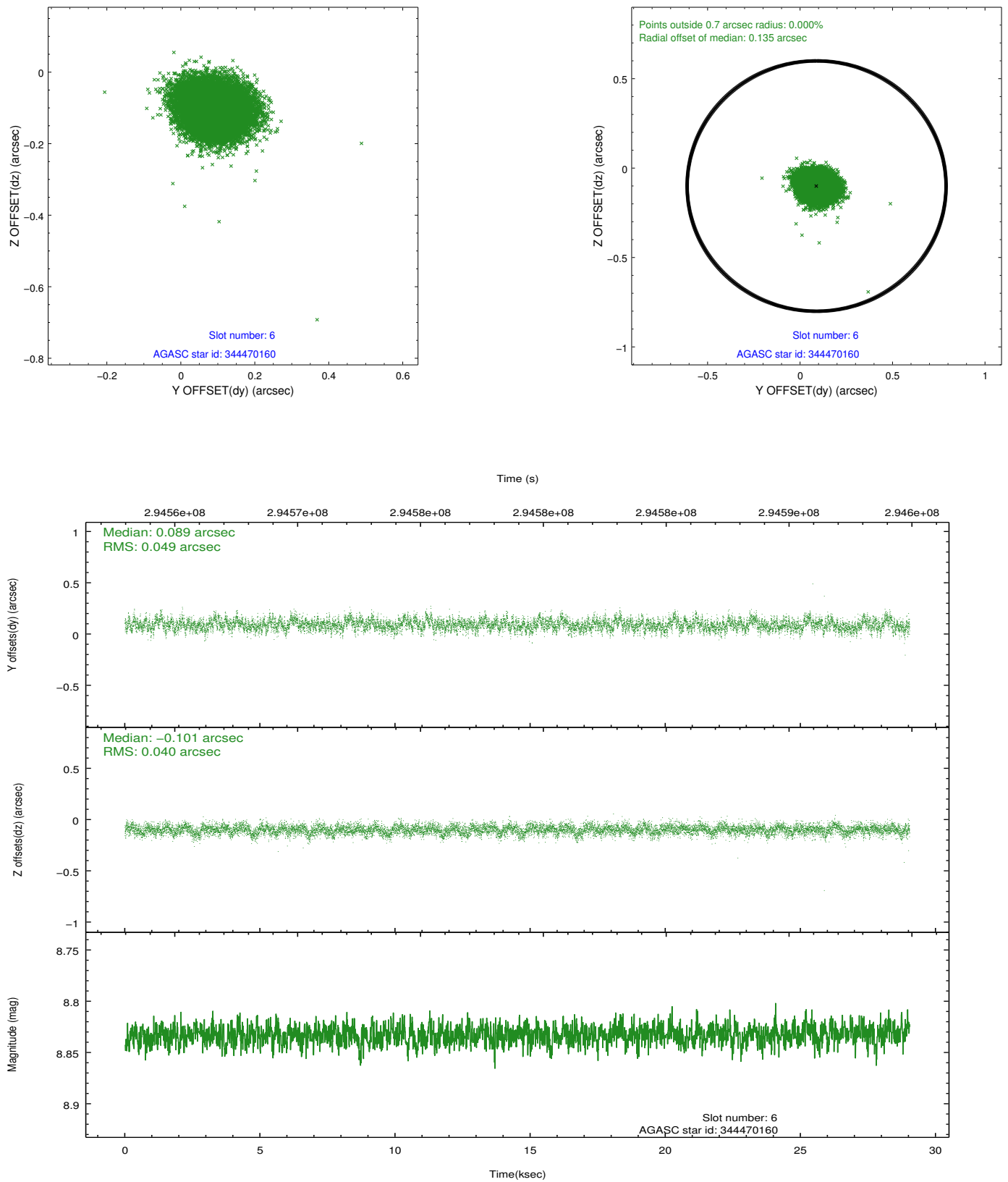
2.4.2 Slot 4



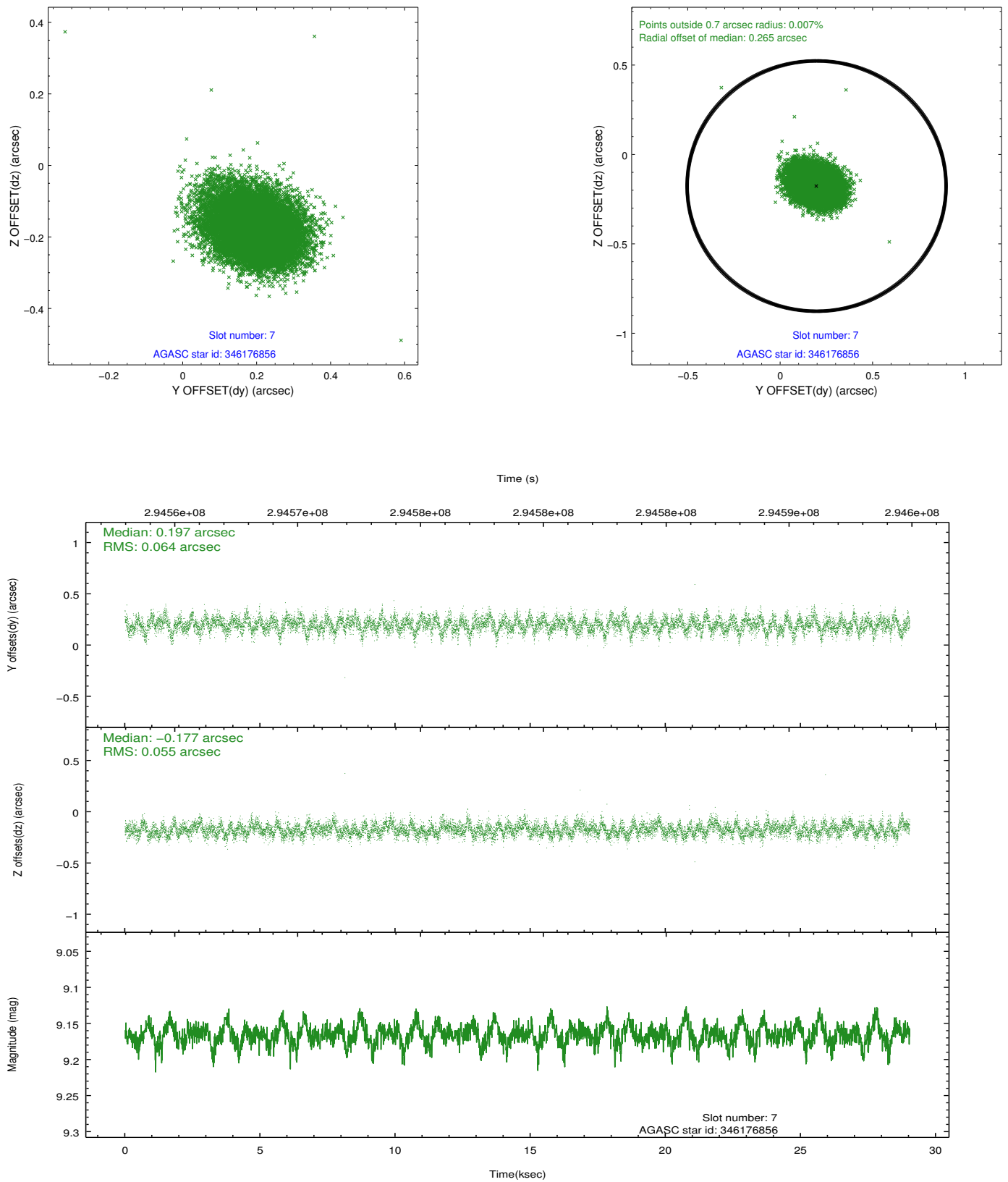
2.4.3 Slot 5



2.4.4 Slot 6

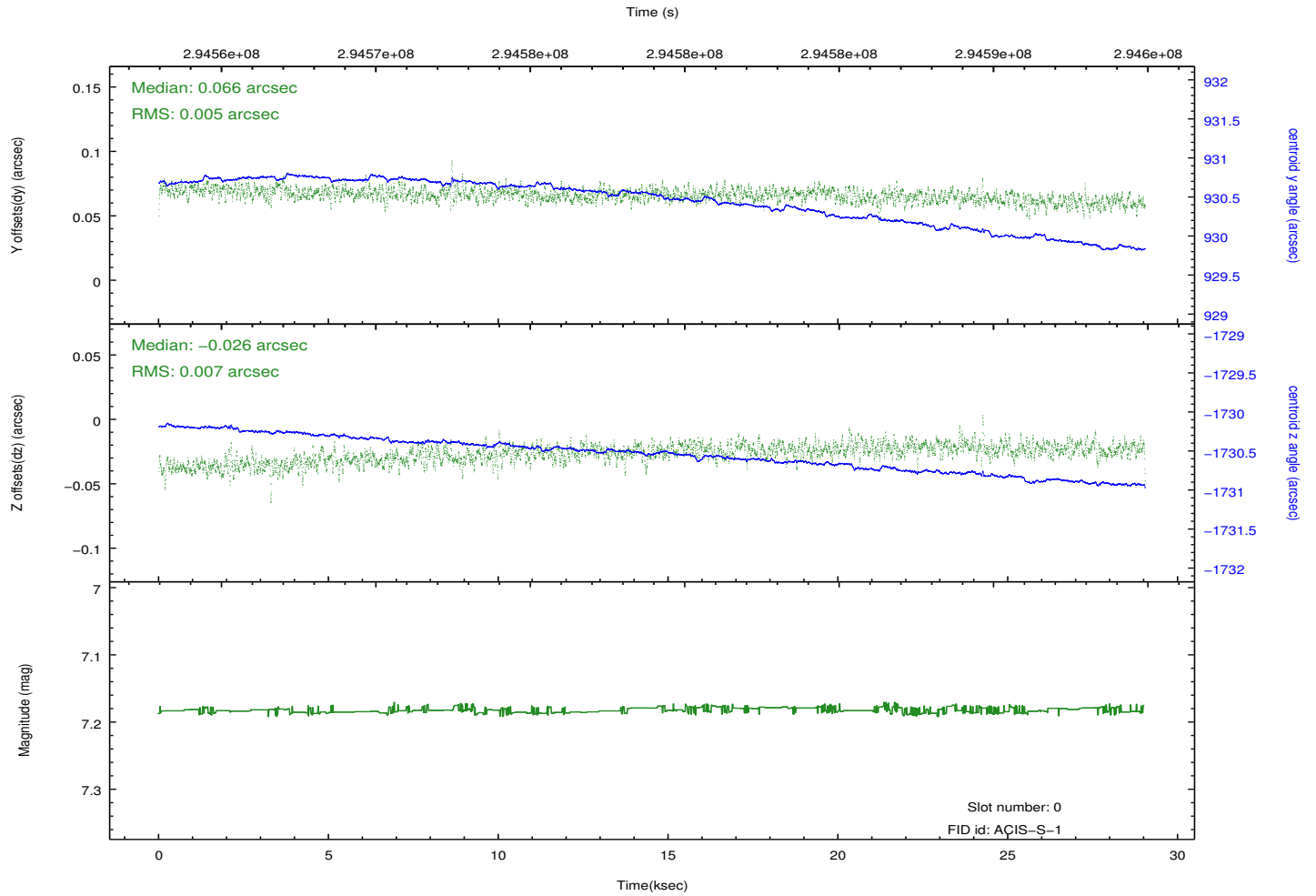
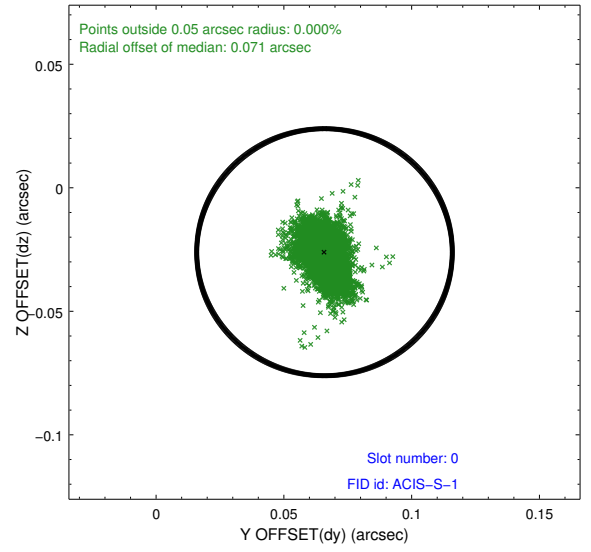
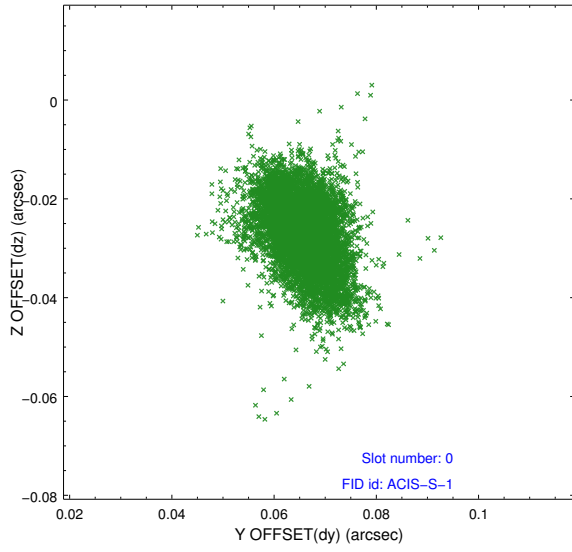


2.4.5 Slot 7

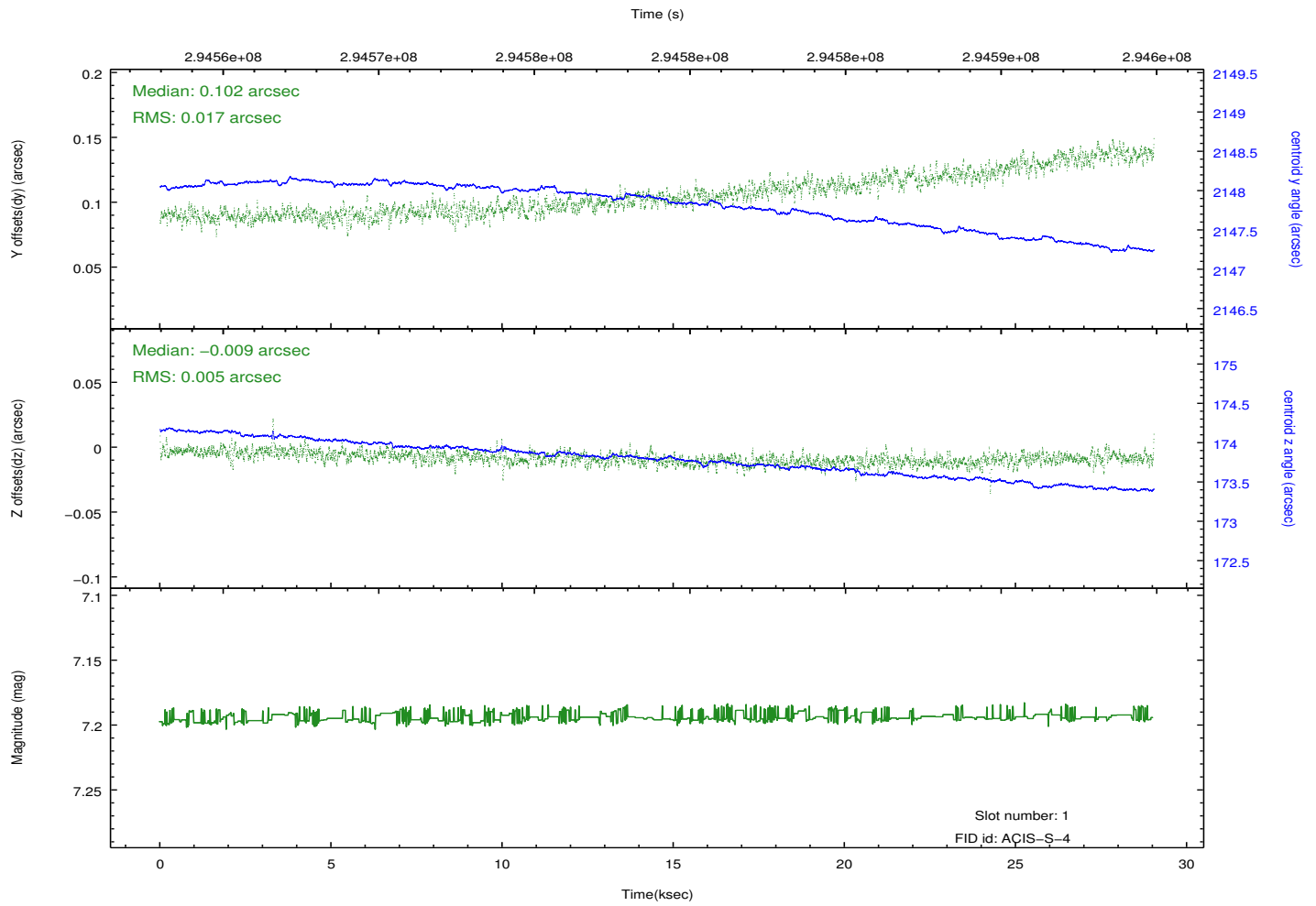
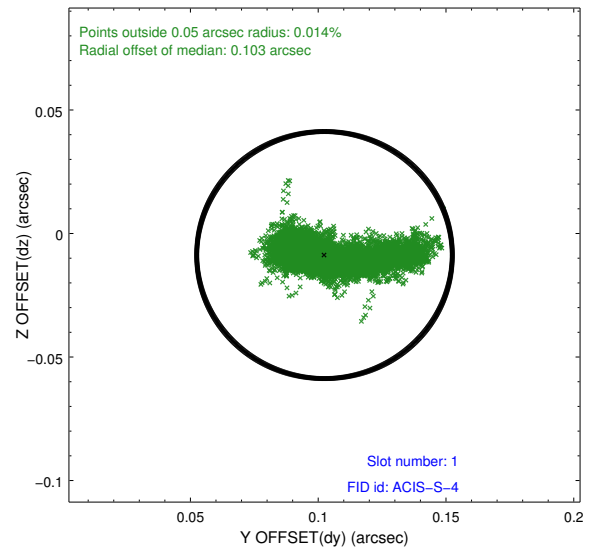
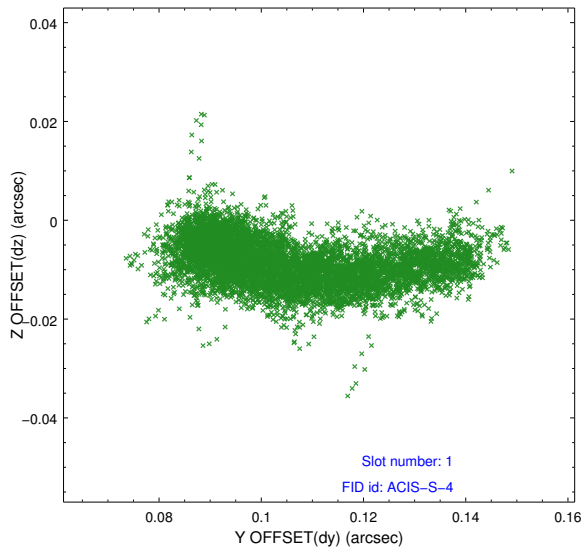


2.5 FID Slots

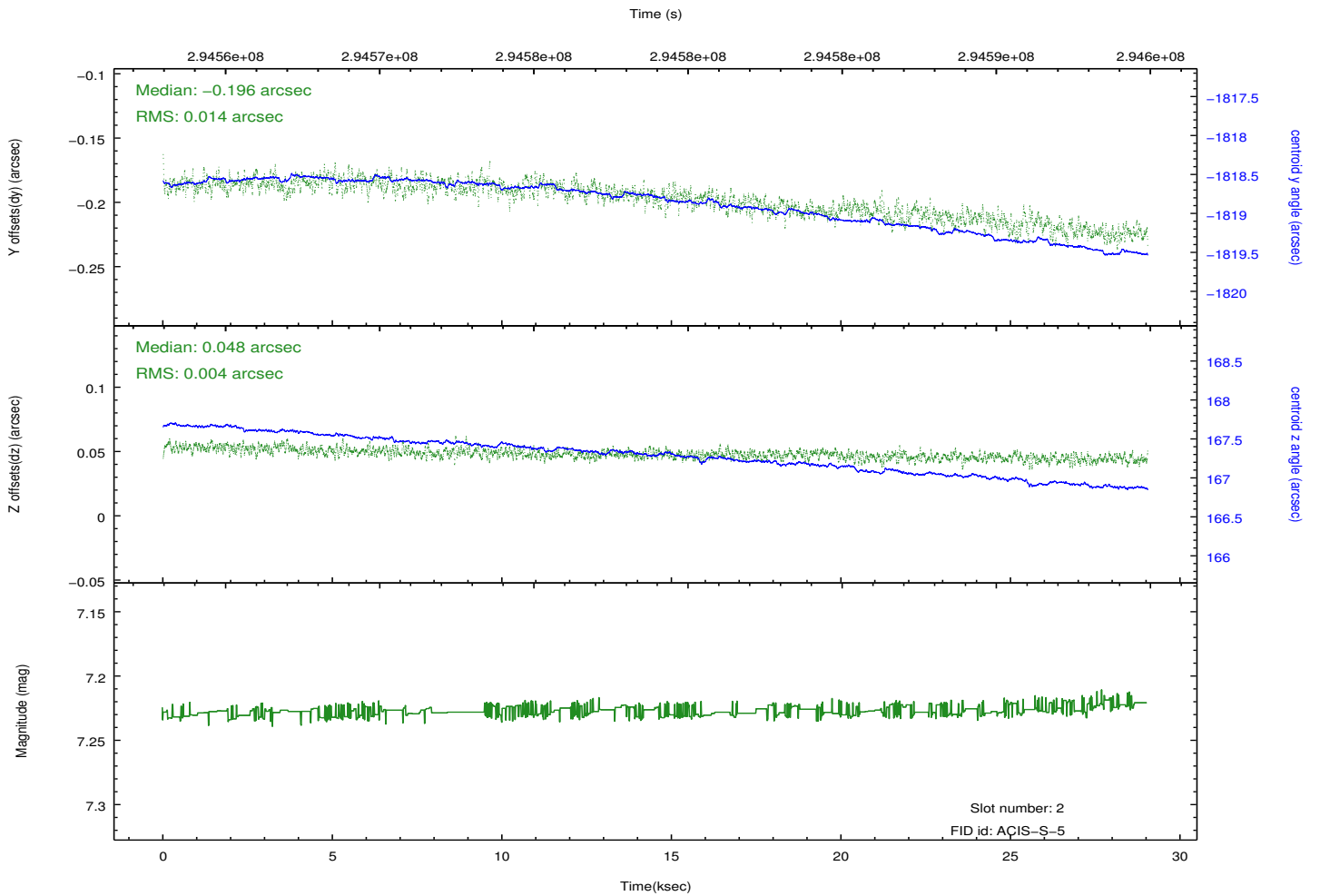
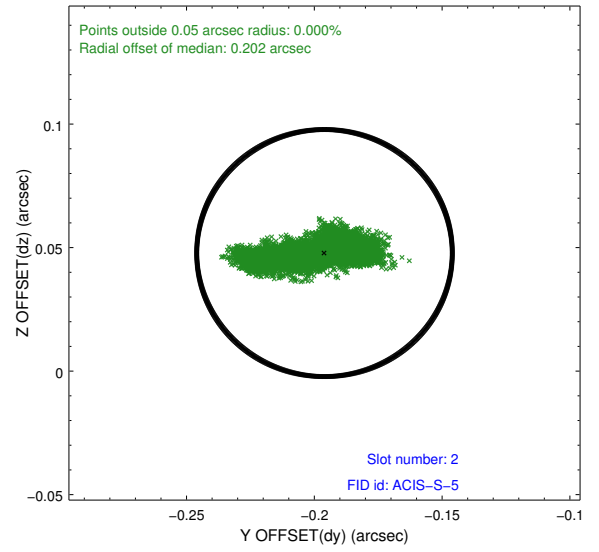
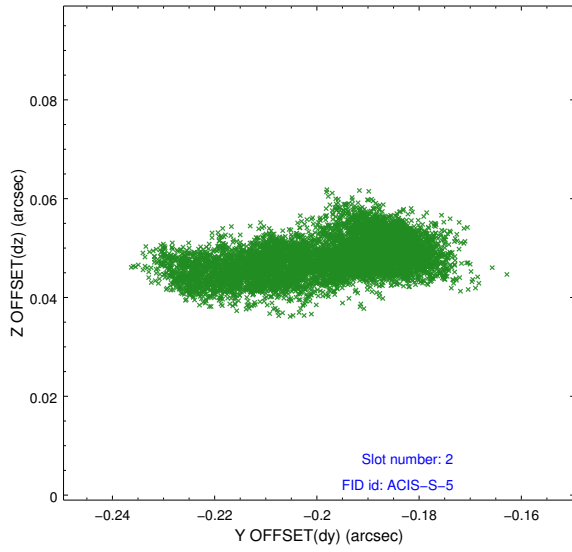
2.5.1 Slot 0



2.5.2 Slot 1



2.5.3 Slot 2



A Summary

A.1 Status

V&V Scientist	Joy Nichols
V&V Date (YYYY-MM-DD)	2012.04.25
V&V Edition	1
V&V Disposition and Status	OK
V&V Charge Time	28.7091002

A.2 Comments

Time constraint met. No obvious source at user-supplied coordinates.
Target was offset by more than 3 arcmin from the aim point.