

V&V Reference Report

L2 ASCDS Version : 8.1.2

Observation 767 - L2 Version 4
Chandra X-Ray Center

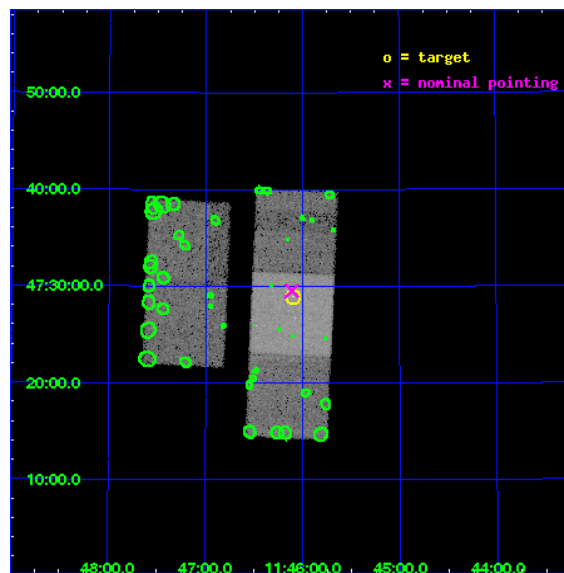
L2 Processing Date : Dec 2 2009

Contents

1	Front	2
2	OBI	3
2.1	OBI	3
2.1.1	Images	3
2.1.2	Bias	3
2.1.3	Parameters	4
2.1.4	Events	4
2.2	Compared Parameters	5
2.3	Aspect	6
2.4	Star Slots	9
2.4.1	Slot 3	9
2.4.2	Slot 4	10
2.4.3	Slot 5	11
2.4.4	Slot 6	12
2.4.5	Slot 7	13
2.5	FID Slots	14
2.5.1	Slot 0	14
2.5.2	Slot 1	15
2.5.3	Slot 2	16
3	Point Sources	17
A	Summary	18
A.1	Status	18
A.2	Comments	18

1 Front

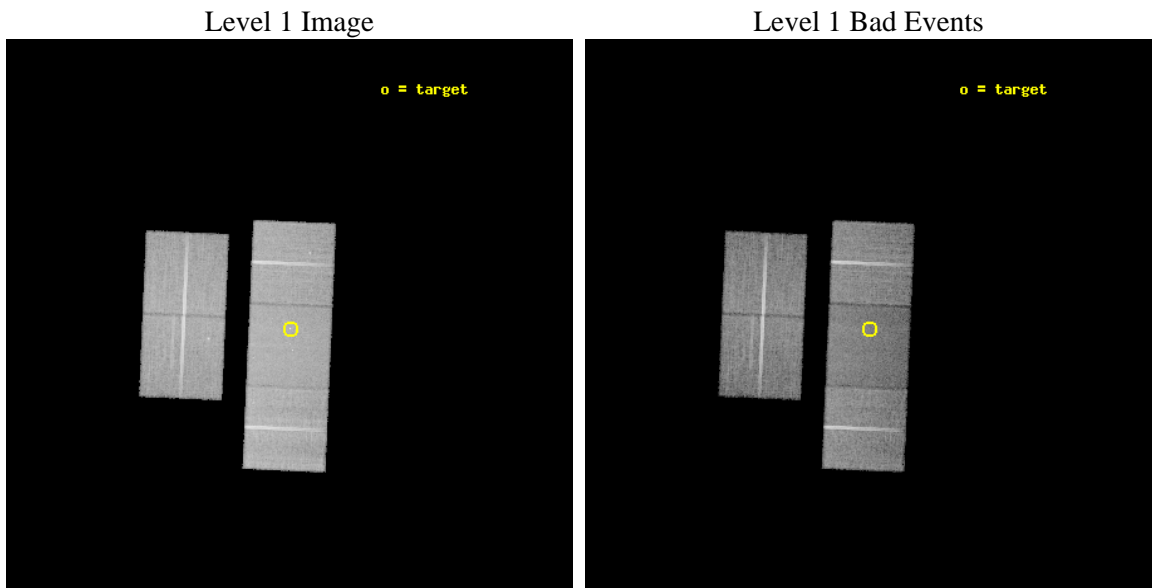
seq_num	500063	Sequence number
obs_id	767	Observation id
title	PROMPT AXAF OBSERVATIONS OF NEARBY SUPERNOVAE	Proposal title
observer	Prof. Walter Lewin	Principal investigator
object	SN1998S	Source name
dtcycle	0	
cycle	P	events from which exps? Prim/Second/Both
ra_targ	176.52546	Observer's specified target RA
dec_targ	47.482167	Observer's specified target Dec
ra_nom	176.52762152853	Nominal RA
dec_nom	47.492254442665	Nominal Dec
roll_nom	92.496057973162	Nominal Roll
revision	4	Processing version of data
ontime	19155.077137195	Sum of GTIs [s]
livetime	18912.524016681	Livetime [s]
ontime2	19158.318097413	Sum of GTIs [s]
ontime3	19161.559057638	Sum of GTIs [s]
ontime6	19161.559057631	Sum of GTIs [s]
ontime7	19155.077137195	Sum of GTIs [s]
ontime8	19161.559057631	Sum of GTIs [s]
l2events	137648	Number of level 2 events



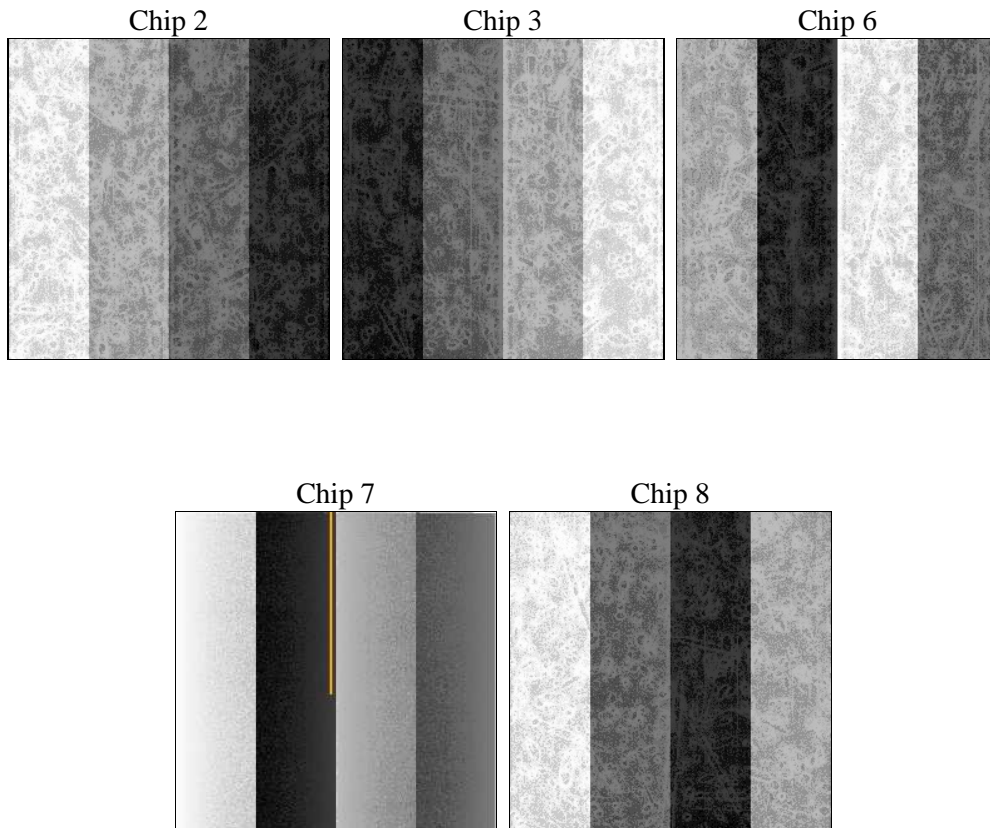
2 OBI

2.1 OBI

2.1.1 Images



2.1.2 Bias



2.1.3 Parameters

obi_num	0	Obi number	sched_exp_time	20000.000000	Scheduled observation exposure time
ascdsver	8.1.2	ASCDS version number	ontime	19155.077137195	Sum of GTIs [s]
caldbver	4.1.4	 	ontime2	19158.318097413	Sum of GTIs [s]
date	2009-12-02T09:08:56	Date and time of file creation	ontime3	19161.559057638	Sum of GTIs [s]
revision	3	Processing version of data	ontime6	19161.559057631	Sum of GTIs [s]
			ontime7	19155.077137195	Sum of GTIs [s]
			ontime8	19161.559057631	Sum of GTIs [s]
			l1events	897507	Number of level 1 events

2.1.4 Events

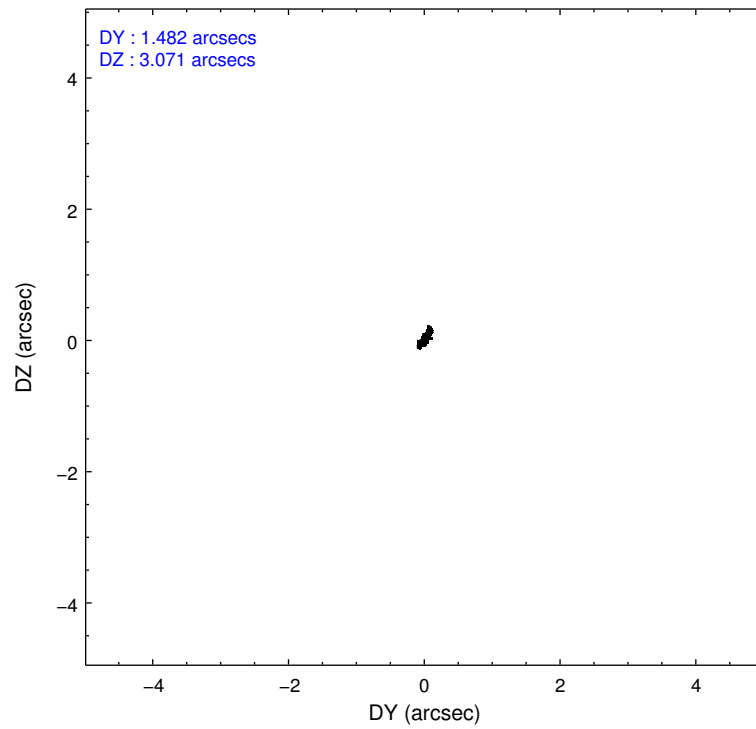
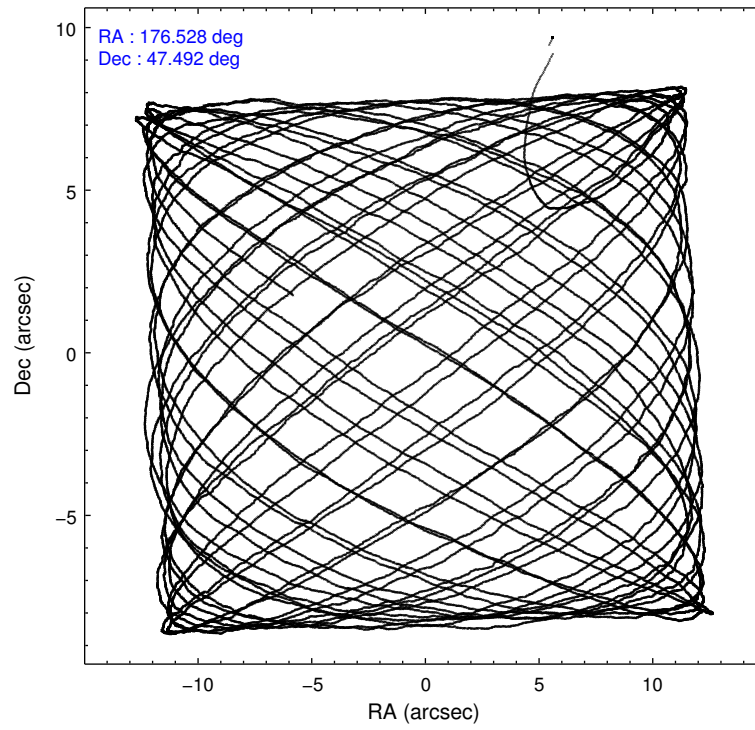
	ccd 2	ccd 3	ccd 6	ccd 7	ccd 8
level 1 events	169130	164791	177326	177202	209058
rejected events	152209	146398	158374	108117	162343
rejected %	89%	88%	89%	61%	77%

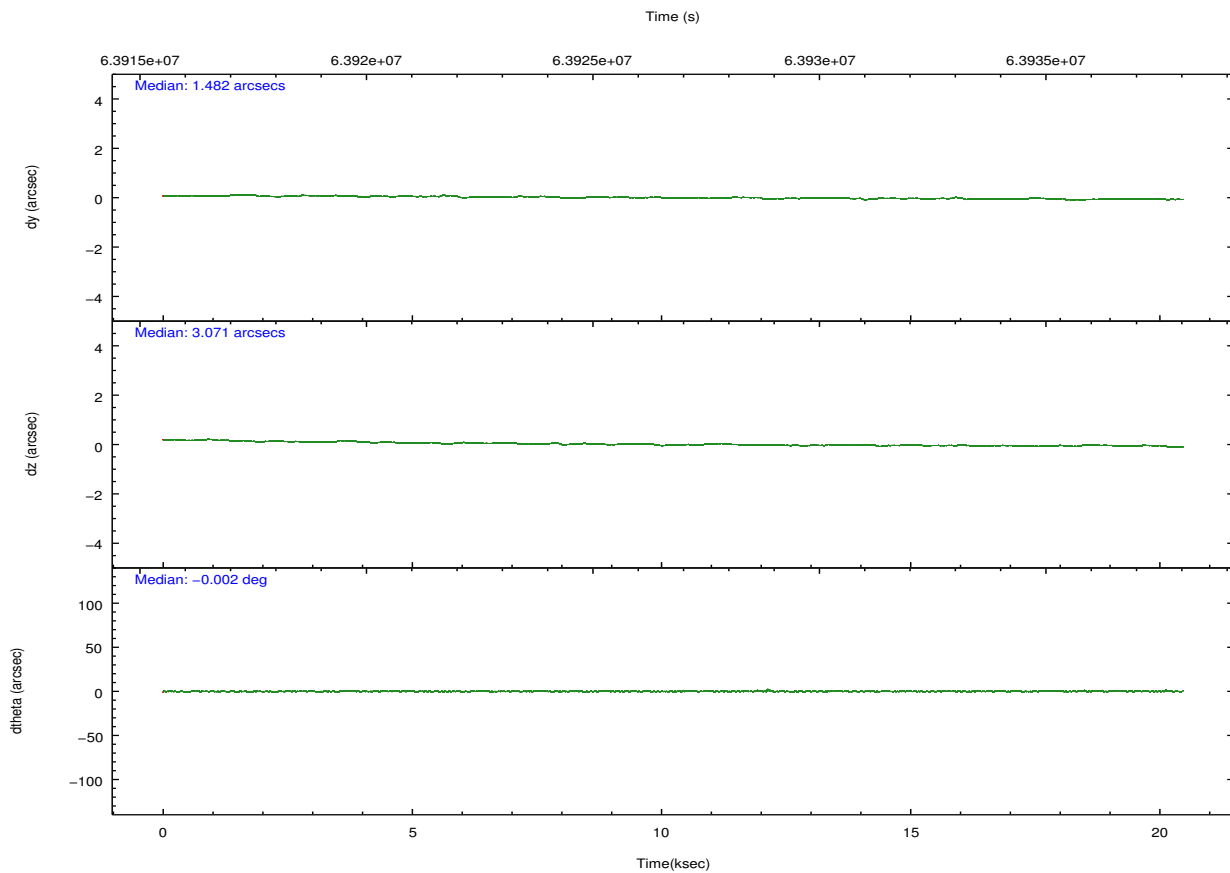
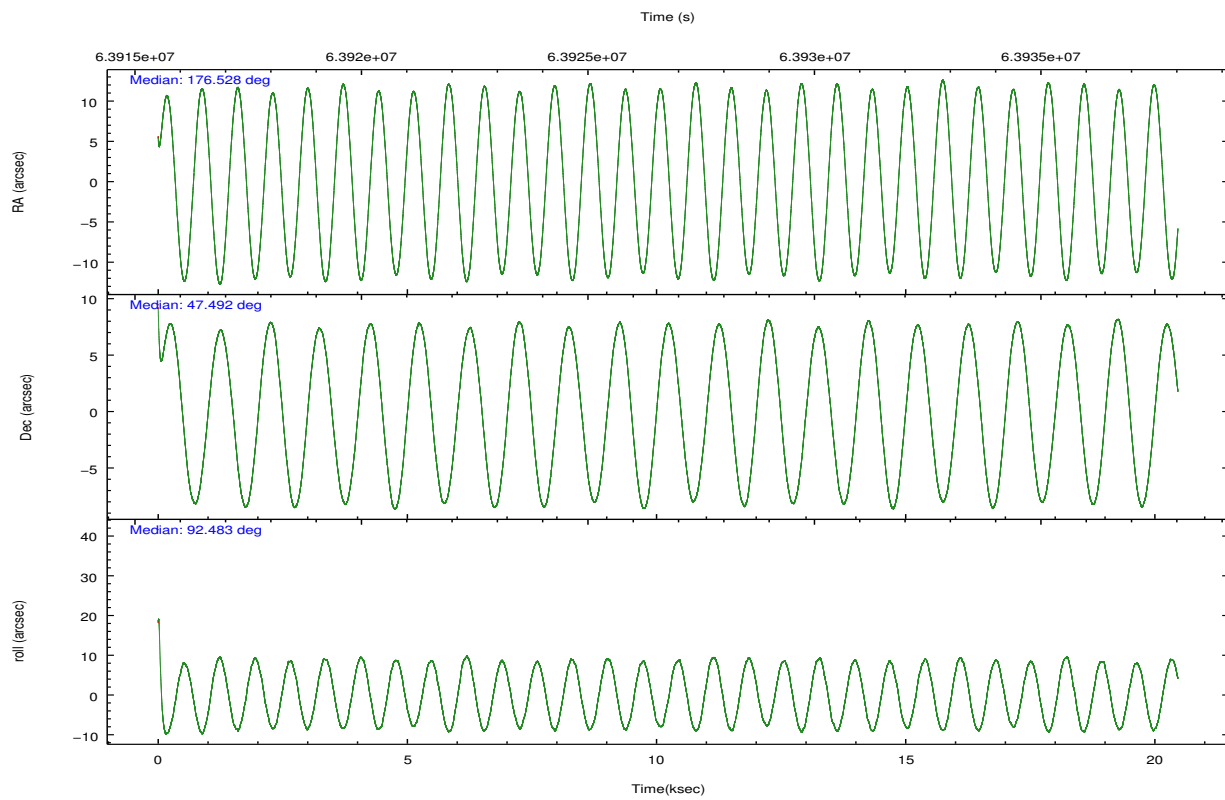
	ccd 2	ccd 3	ccd 6	ccd 7	ccd 8
grade 0 events	3536	3787	4032	4636	12892
	2%	2%	2%	2%	6%
grade 1 events	31	45	34	92	94
	0%	0%	0%	0%	0%
grade 2 events	7329	8189	8136	14599	14209
	4%	4%	4%	8%	6%
grade 3 events	995	1060	1036	4166	4524
	0%	0%	0%	2%	2%
grade 4 events	1020	1028	1070	3853	4107
	0%	0%	0%	2%	1%
grade 5 events	2878	3017	3437	10661	4807
	1%	1%	1%	6%	2%
grade 6 events	4044	4334	4687	41838	10994
	2%	2%	2%	23%	5%
grade 7 events	149297	143331	154894	97357	157431
	88%	86%	87%	54%	75%

2.2 Compared Parameters

Parameter	Planned	Actual	Parameter	Planned	Actual
Instrument	ACIS	ACIS	Obspar format version number	6	6
Detector	ACIS-23678	ACIS-23678	Obspar file type	PREDICTED	ACTUAL
Grating	NONE	NONE	Obspar update status	NONE	UPDATED
Data mode	FAINT	FAINT	Number of optional ACIS chips dropped	0	0
Observation mode	POINTING	POINTING	On-chip summing requested	N	N
Pointing RA	176.549455	176.5276215285322	Subarray requested	NONE	NONE
Pointing Dec	47.468987	47.4922544426647	Alternating exposures requested	N	N
Pointing Roll	92.323320	92.49605797316214	Primary exposure time	0.000000	3.2
Window start time	63244864.184000	63244864.184000			
Window stop time	64108864.184000	64108864.184000			
SIM focus pos (mm)	-0.684267	-0.6828225247311905			
SIM defocus (mm)	0	0.001444936568705701			
SIM translation stage pos (mm)	-190.132523	-190.1400660498719			
SIM translation stage offset (mm)	0	0.00754346686406393			
Observation start time	63917000.184000	63915789.216			
Observation start date	2000-01-10T18:42:16	2000-01-10T18:23:09			
Observation end time	63937000.184000	63938076.304309			
Observation end date	2000-01-11T00:15:36	2000-01-11T00:34:36			
Read mode	TIMED	TIMED			

2.3 Aspect



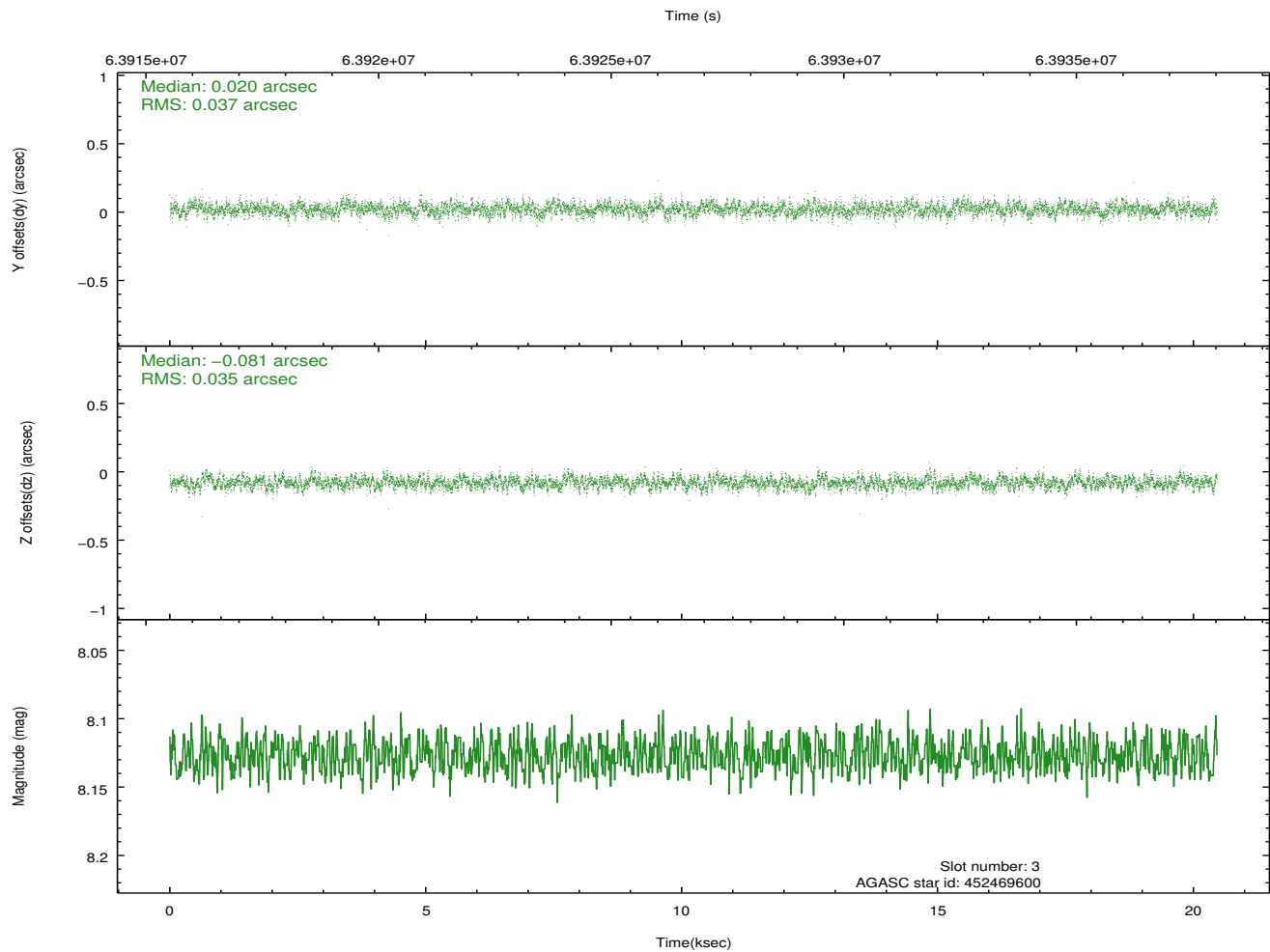
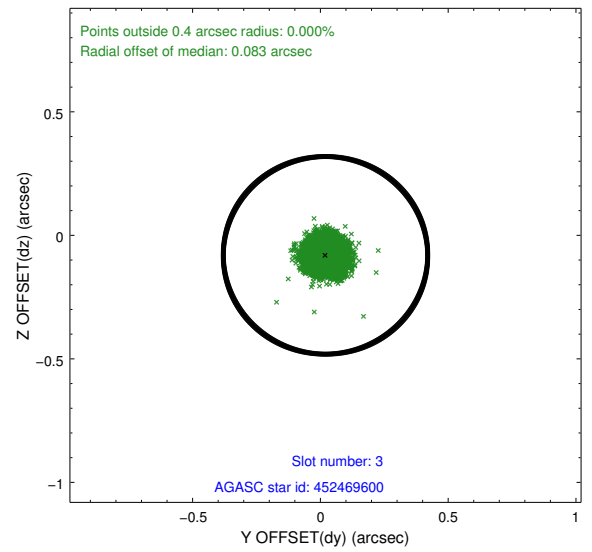
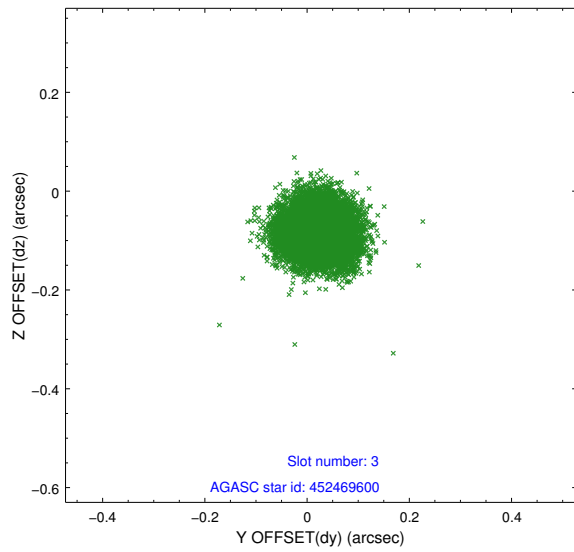


Slot Statistics

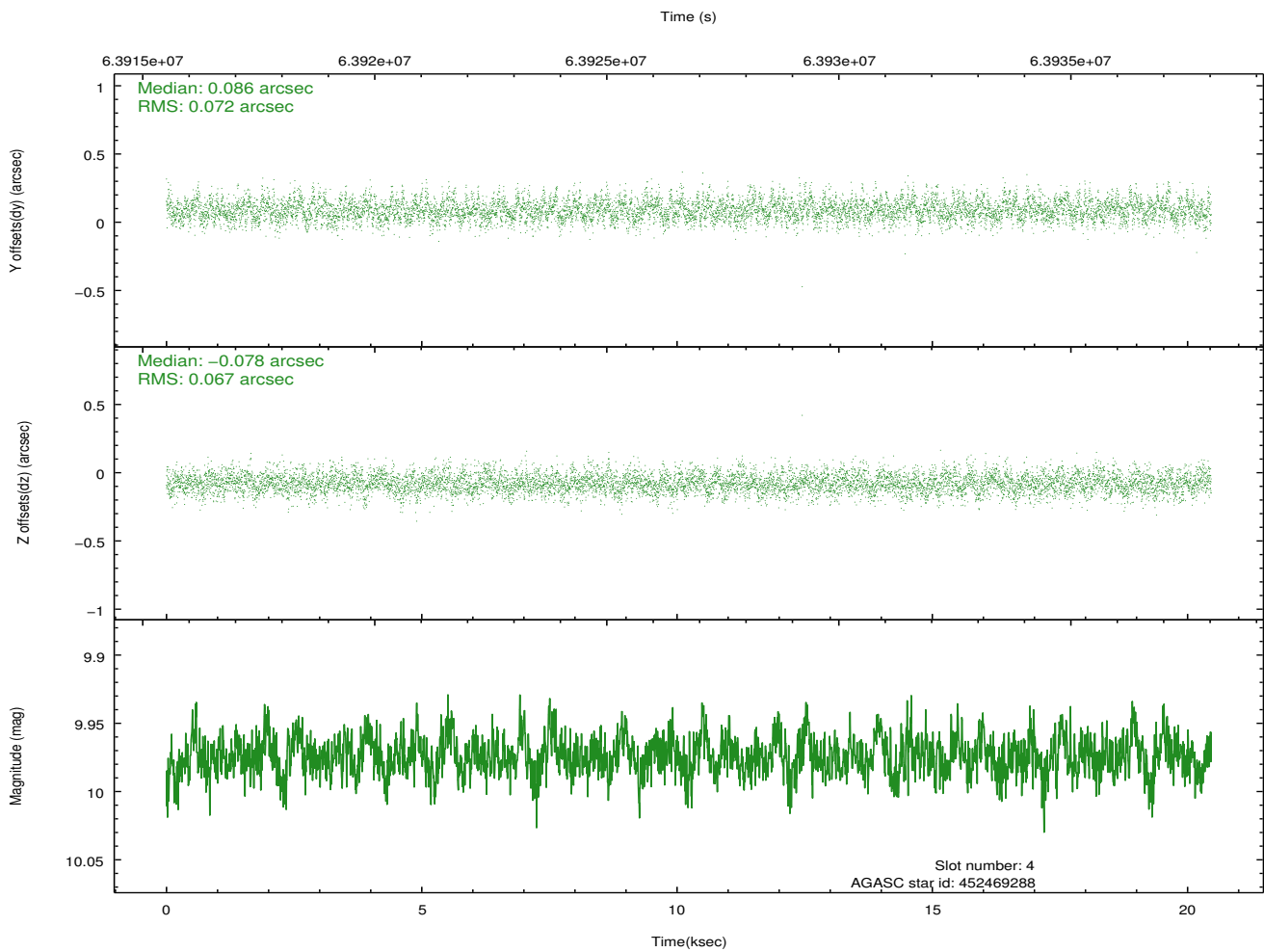
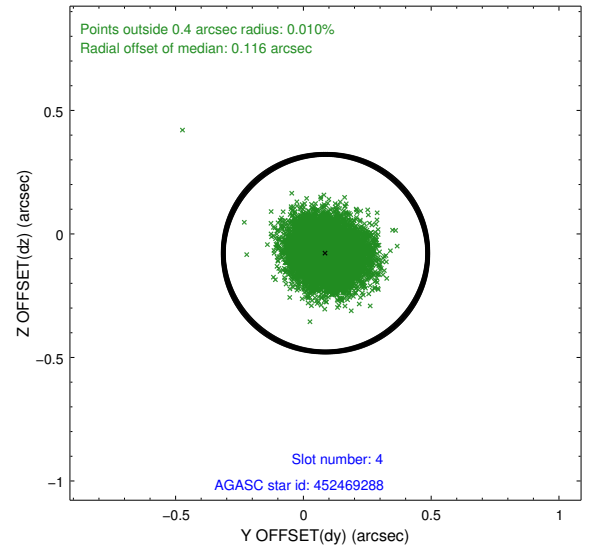
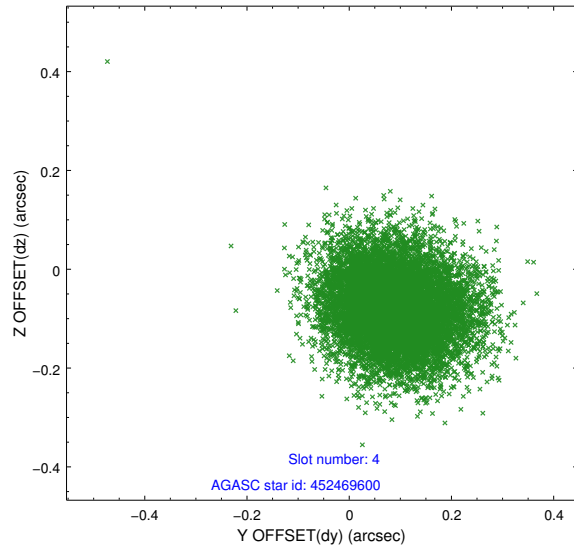
slot	status	id	mag	n_pts	med_dy	med_dz	dr1	dr2	ra	dec	mean_y	mean_z
0	FID	ACIS-S-2	7.11	4987	0.003	-0.011	0.007	0.011	0.000000	0.000000	-754.14	-1724.14
1	FID	ACIS-S-4	7.21	4983	-0.004	0.002	0.006	0.010	0.000000	0.000000	2159.11	184.08
2	FID	ACIS-S-5	7.24	4985	-0.030	0.018	0.006	0.011	0.000000	0.000000	-1806.72	178.10
3	GUIDE	452469600	8.13	9969	0.020	-0.081	0.054	0.087	176.377116	47.666878	729.18	389.33
4	GUIDE	452469288	9.97	9963	0.086	-0.078	0.104	0.170	176.480832	47.547282	288.62	155.87
5	GUIDE	452470432	9.84	9951	0.003	0.109	0.094	0.154	176.712094	47.890435	1500.62	-452.70
6	GUIDE	452469688	8.87	9969	-0.114	0.228	0.075	0.122	177.319786	47.801713	1131.08	-1909.06
7	GUIDE	452474496	9.80	9958	0.009	-0.181	0.119	0.195	175.552399	47.604662	601.28	2398.07

2.4 Star Slots

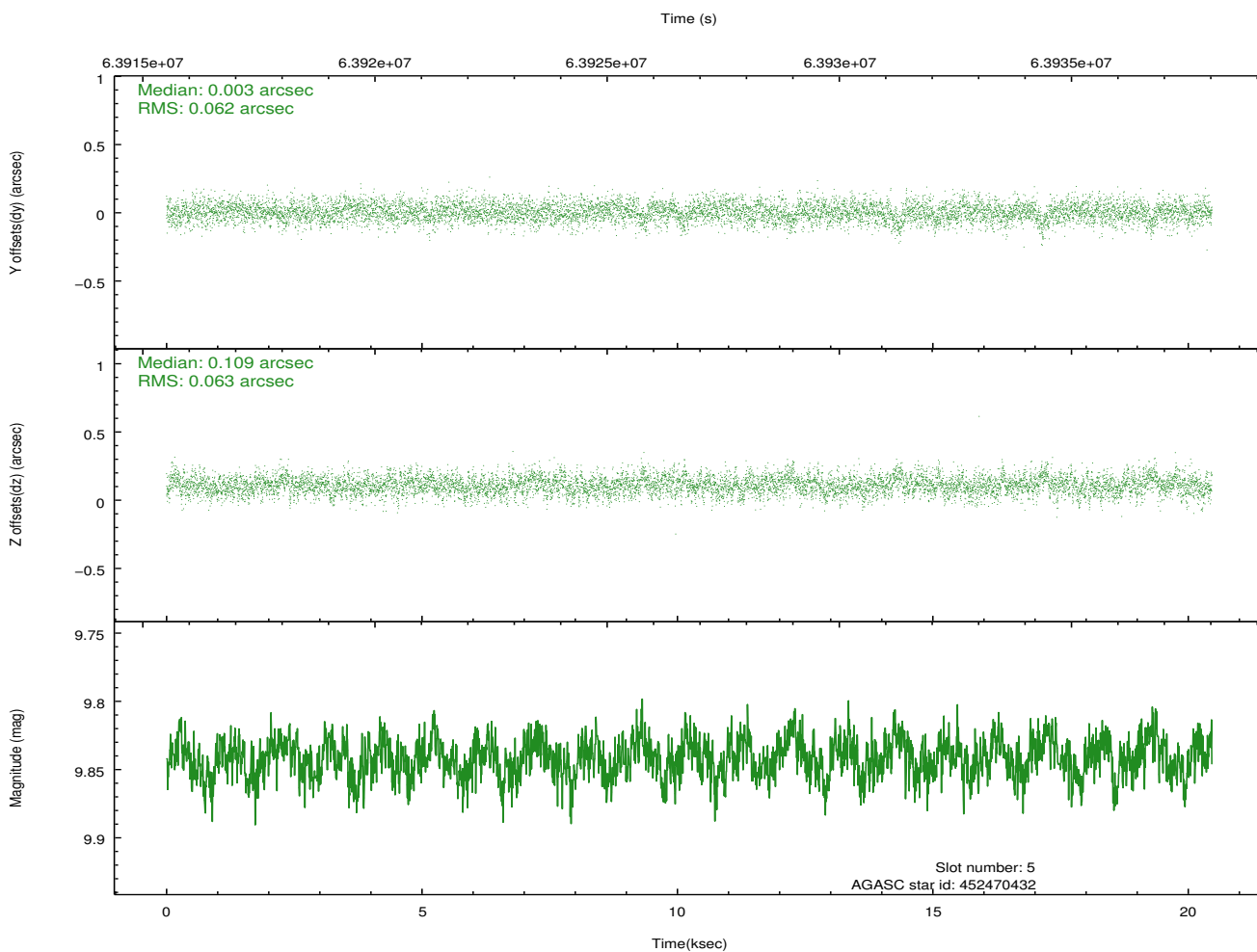
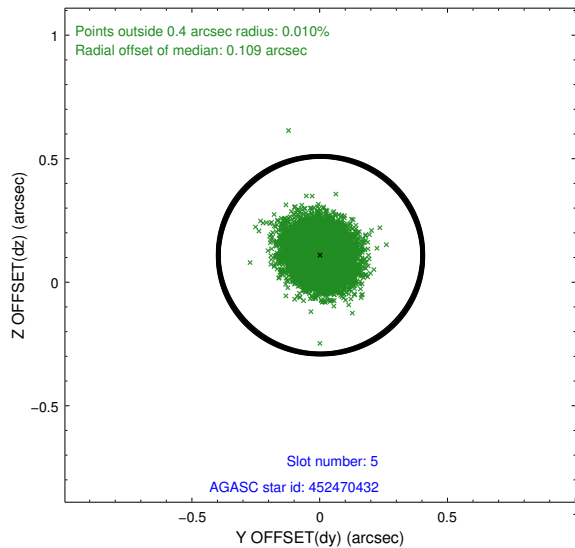
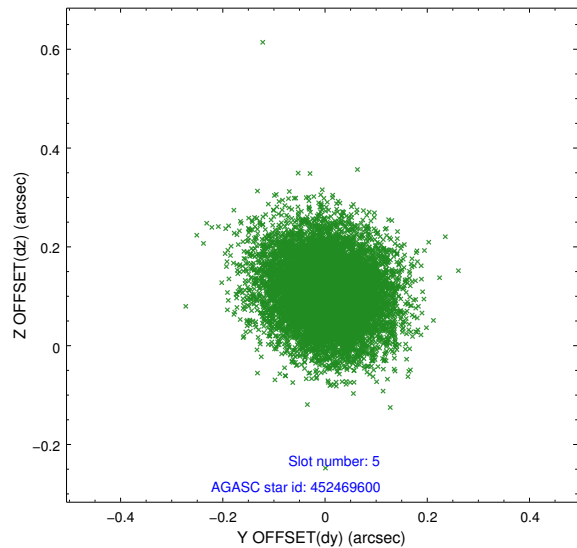
2.4.1 Slot 3



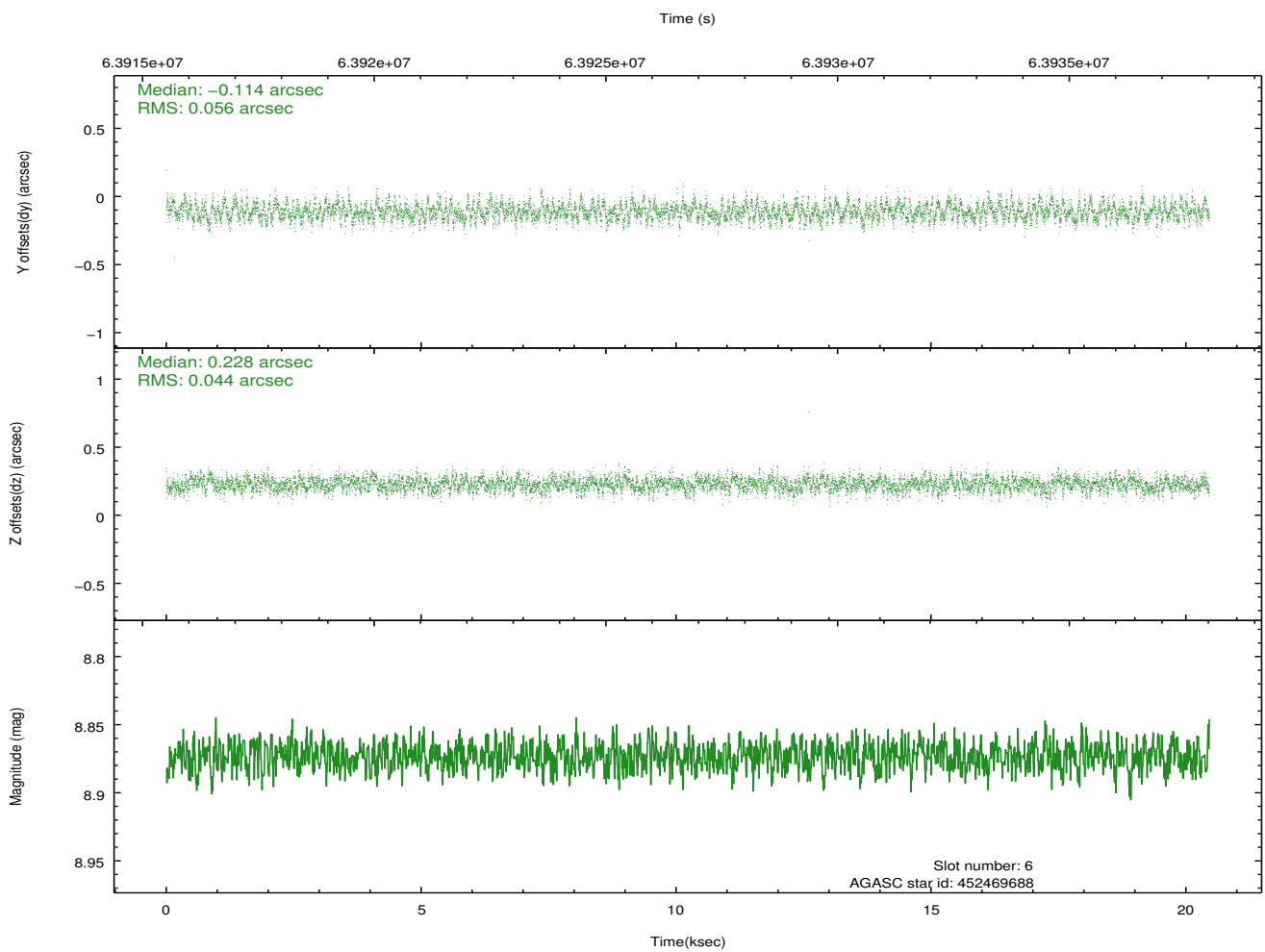
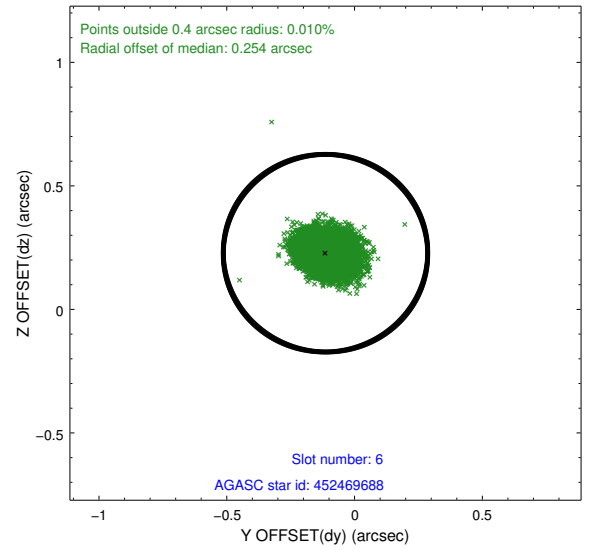
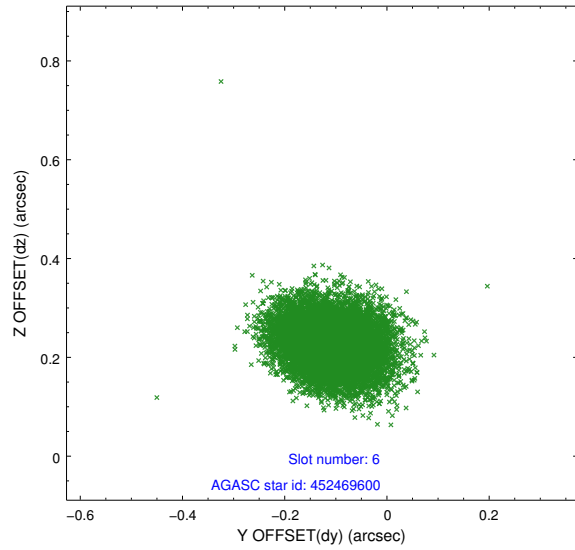
2.4.2 Slot 4



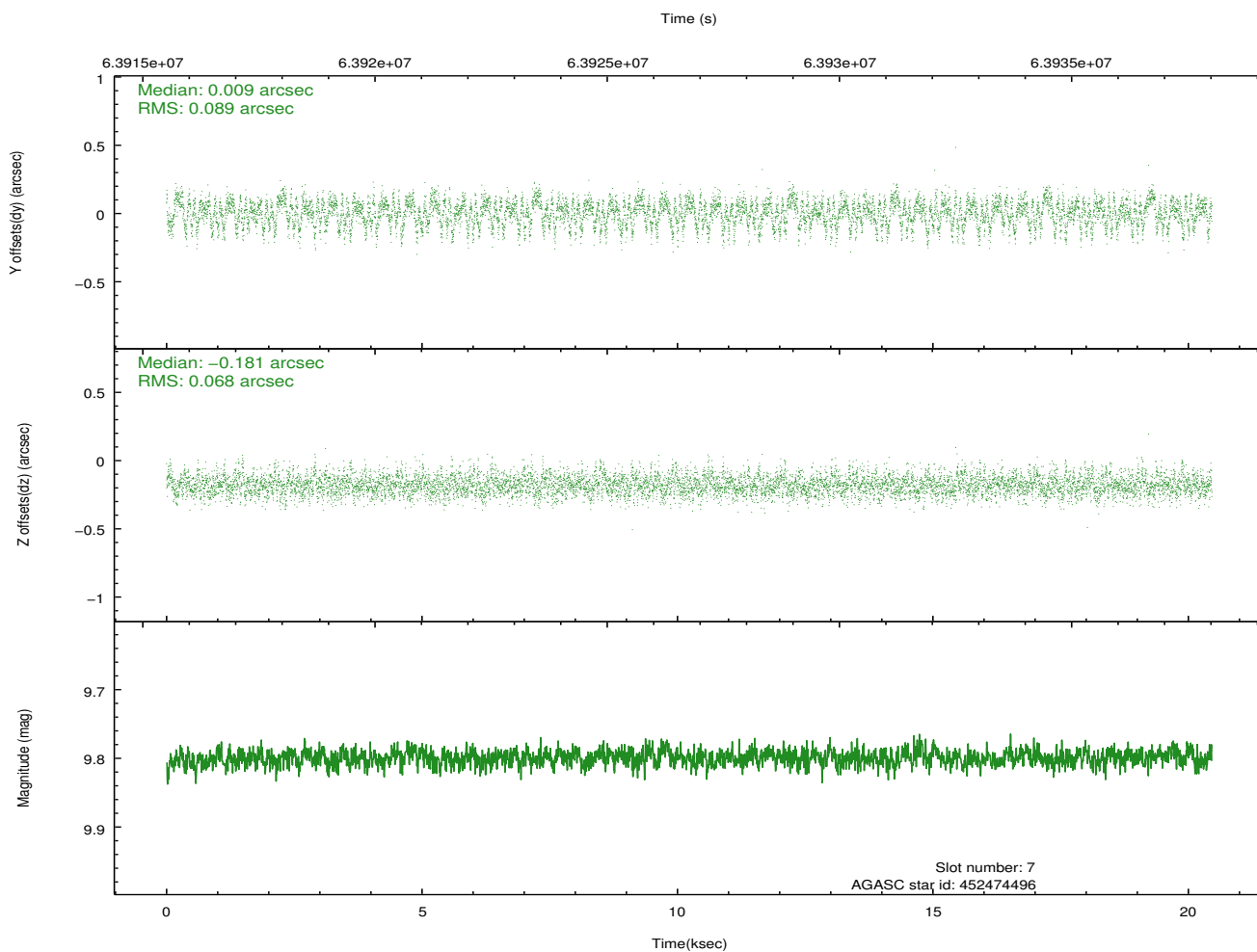
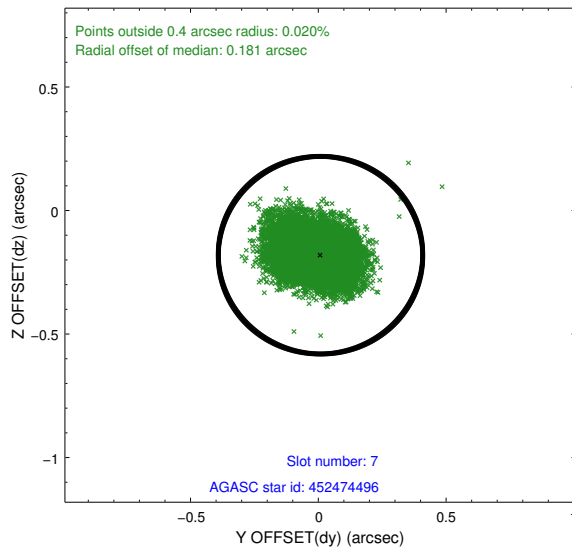
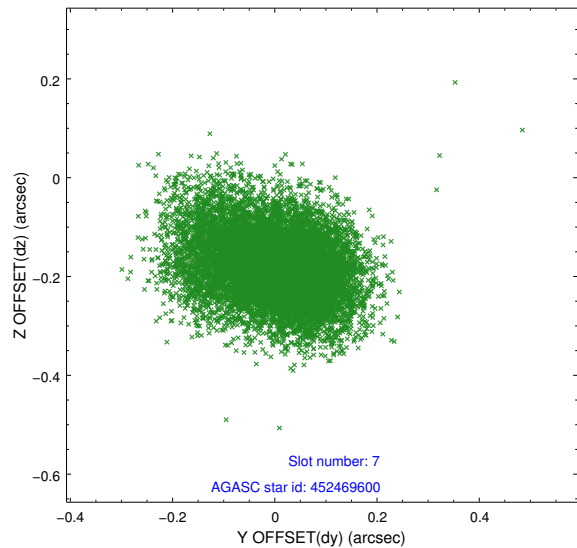
2.4.3 Slot 5



2.4.4 Slot 6

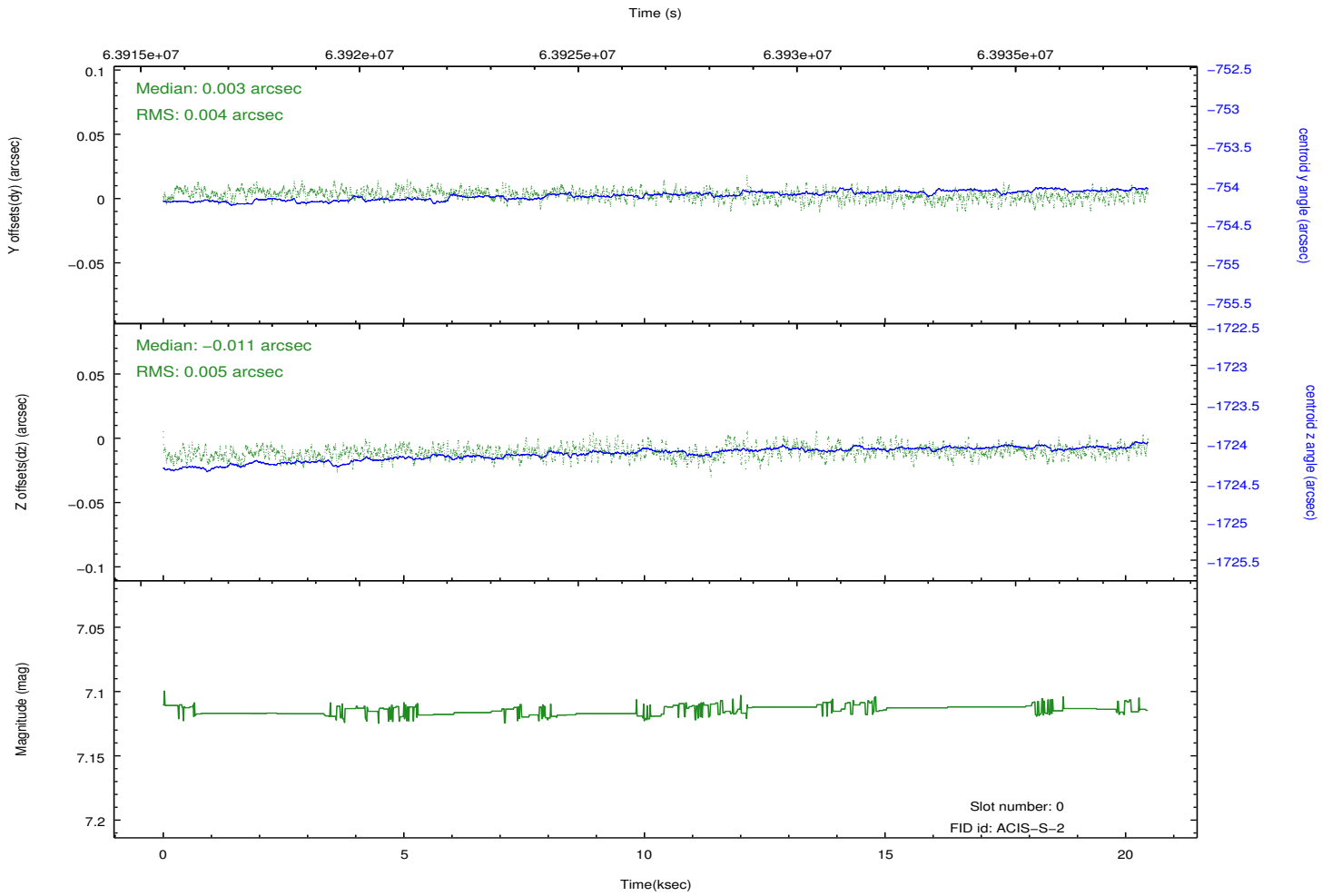
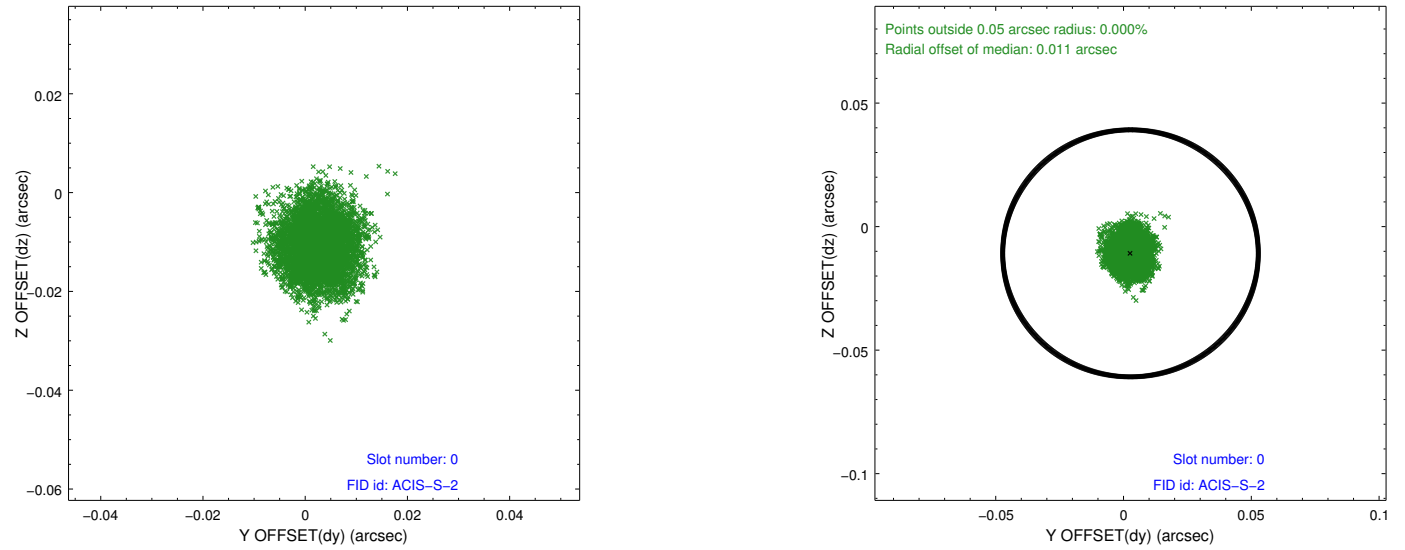


2.4.5 Slot 7

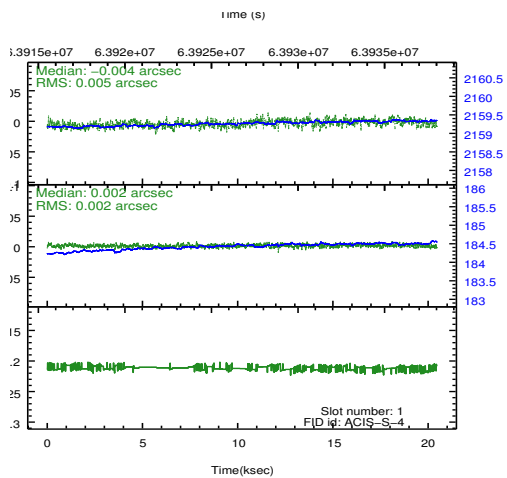
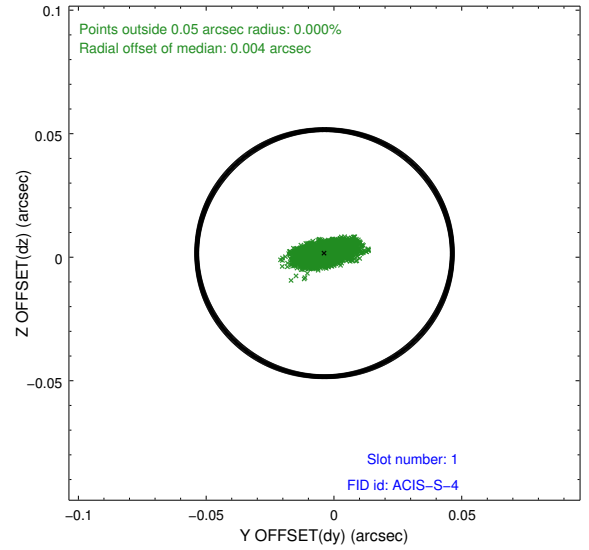
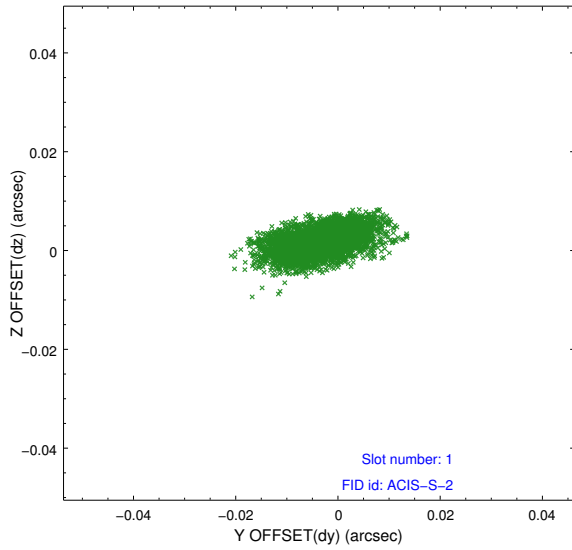


2.5 FID Slots

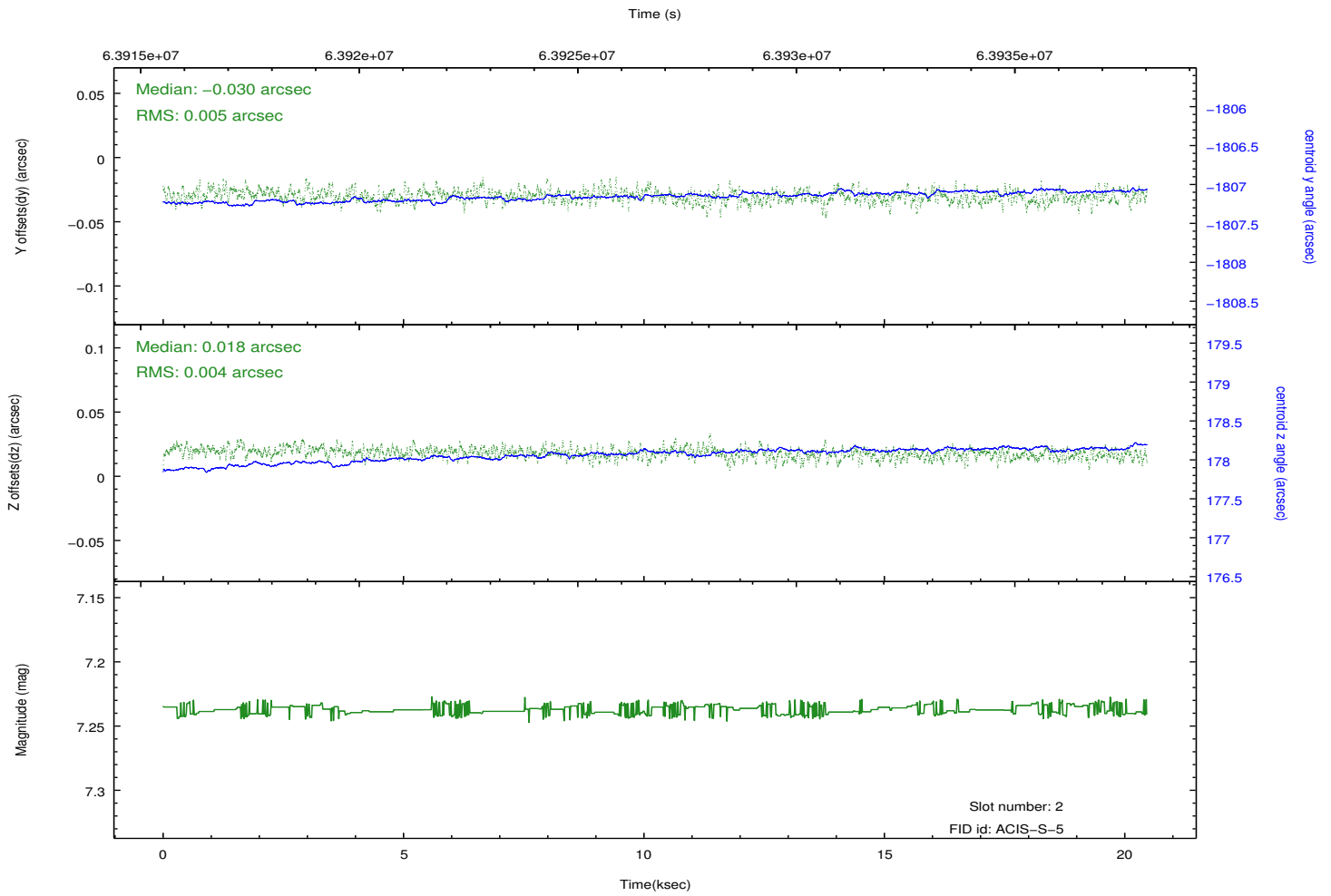
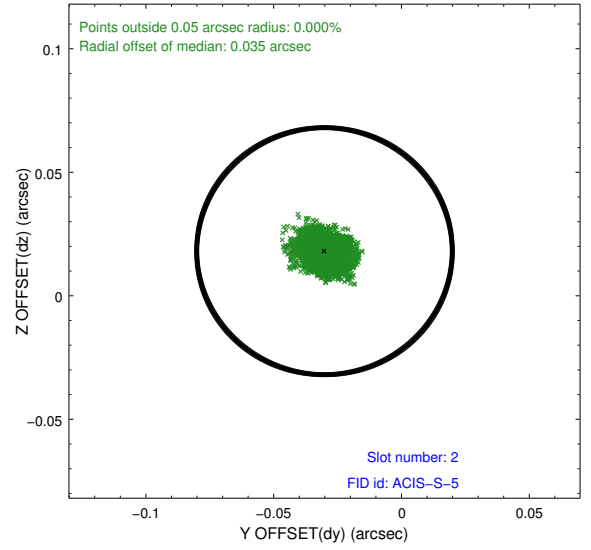
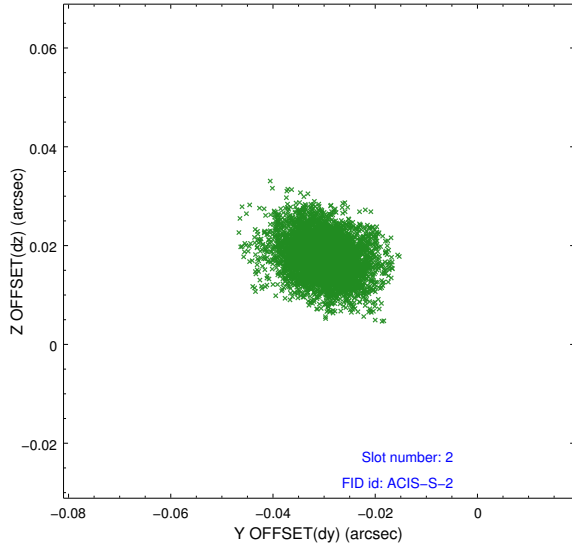
2.5.1 Slot 0



2.5.2 Slot 1

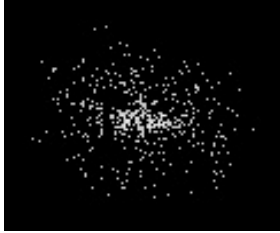


2.5.3 Slot 2



3 Point Sources

8.60 arcmin



7.54 arcmin



5.21 arcmin



15.25 arcmin



A Summary

A.1 Status

V&V Scientist	Joy Nichols
V&V Date (YYYY-MM-DD)	2010.01.27
V&V Edition	1
V&V Disposition and Status	OK
V&V Charge Time	19.158

A.2 Comments

The focal plane temperature is approximately -110C during this observation. This reprocessing of the data applies no CTI correction because none is available for this temperature at present.

The ACIS CTI correction has not been calibrated at this temperature, because it was early in the mission, and ACIS had not yet been lowered to the standard -119.7 C. Both front and back illuminated chips are affected. However a T_GAIN correction has been applied to the BI chips (ACIS-5 and ACIS-7) data included here.

The ACIS spectral response calibration is less accurate at these warmer temperatures than it is at -119.7 C. Users whose science objectives depend on the most accurate spectral response (ie: fitting line-rich spectra) may notice an effect. Users whose science objectives do not depend on the most accurate spectral response should not notice an effect.