

# V&V Reference Report

## L2 ASCDS Version : 8.4.4

Observation 7827 - L2 Version 2  
Chandra X-Ray Center

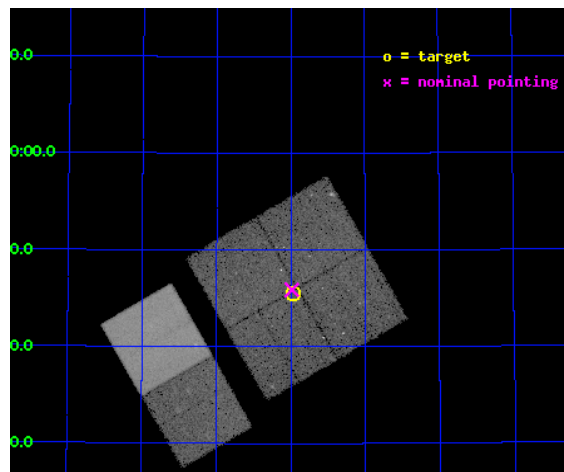
L2 Processing Date : Apr 29 2012

## Contents

<b>1</b>	<b>Front</b>	<b>2</b>
<b>2</b>	<b>OBI</b>	<b>3</b>
2.1	OBI . . . . .	3
2.1.1	Images . . . . .	3
2.1.2	Bias . . . . .	3
2.1.3	Parameters . . . . .	4
2.1.4	Events . . . . .	4
2.2	Compared Parameters . . . . .	5
2.3	Aspect . . . . .	6
2.4	Star Slots . . . . .	9
2.4.1	Slot 3 . . . . .	9
2.4.2	Slot 4 . . . . .	10
2.4.3	Slot 5 . . . . .	11
2.4.4	Slot 6 . . . . .	12
2.4.5	Slot 7 . . . . .	13
2.5	FID Slots . . . . .	14
2.5.1	Slot 0 . . . . .	14
2.5.2	Slot 1 . . . . .	15
2.5.3	Slot 2 . . . . .	16
<b>A</b>	<b>Summary</b>	<b>17</b>
A.1	Status . . . . .	17
A.2	Comments . . . . .	17

# 1 Front

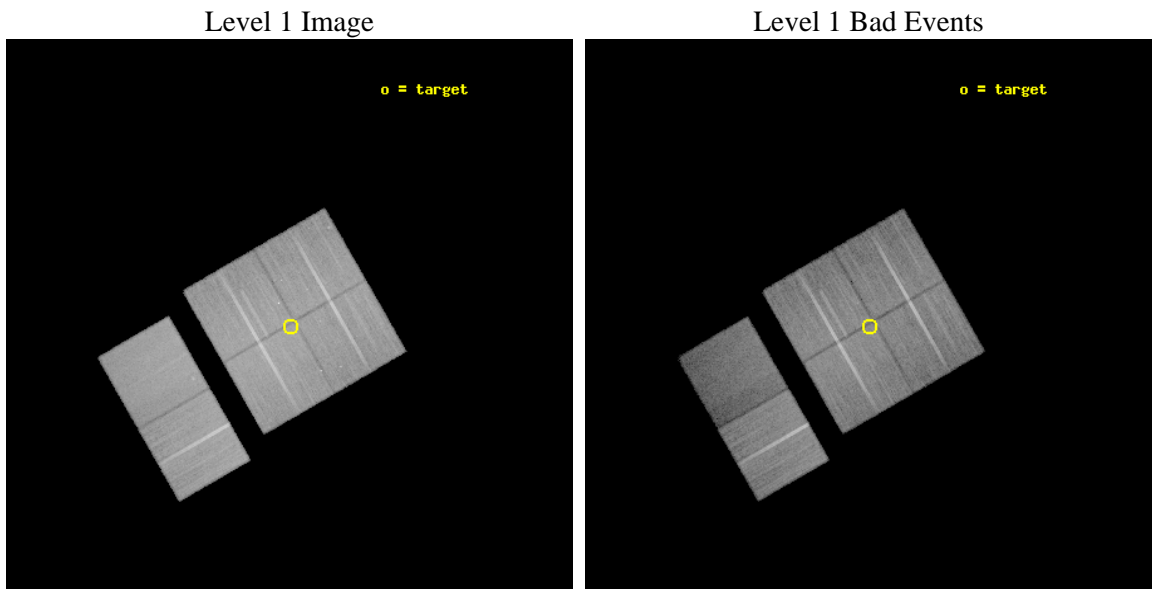
seq_num	701491	Sequence number
obs_id	7827	Observation id
title	What Powers the z~2 Spitzer ULIRGs in the First Look Survey	Propos
observer	Dr. Lin Yan	Principal investigator
object	FLS4	Source name
dtycycle	0	&#160
cycle	P	events from which exps? Prim/Second/Both
ra_targ	257.992917	Observer's specified target RA [deg]
dec_targ	58.758306	Observer's specified target Dec [deg]
ra_nom	257.99625942309	Nominal RA [deg]
dec_nom	58.764763180875	Nominal Dec [deg]
roll_nom	240.07691285236	Nominal Roll [deg]
revision	2	Processing version of data
ontime	30035.118067026	Sum of GTIs [s]
livetime	29654.795317085	Livetime [s]
ontime0	30038.358907878	Sum of GTIs [s]
ontime1	30035.117917657	Sum of GTIs [s]
ontime2	30035.117927611	Sum of GTIs [s]
ontime3	30035.118067026	Sum of GTIs [s]
ontime6	30038.358887911	Sum of GTIs [s]
ontime7	30041.599888146	Sum of GTIs [s]
l2events	194897	Number of level 2 events



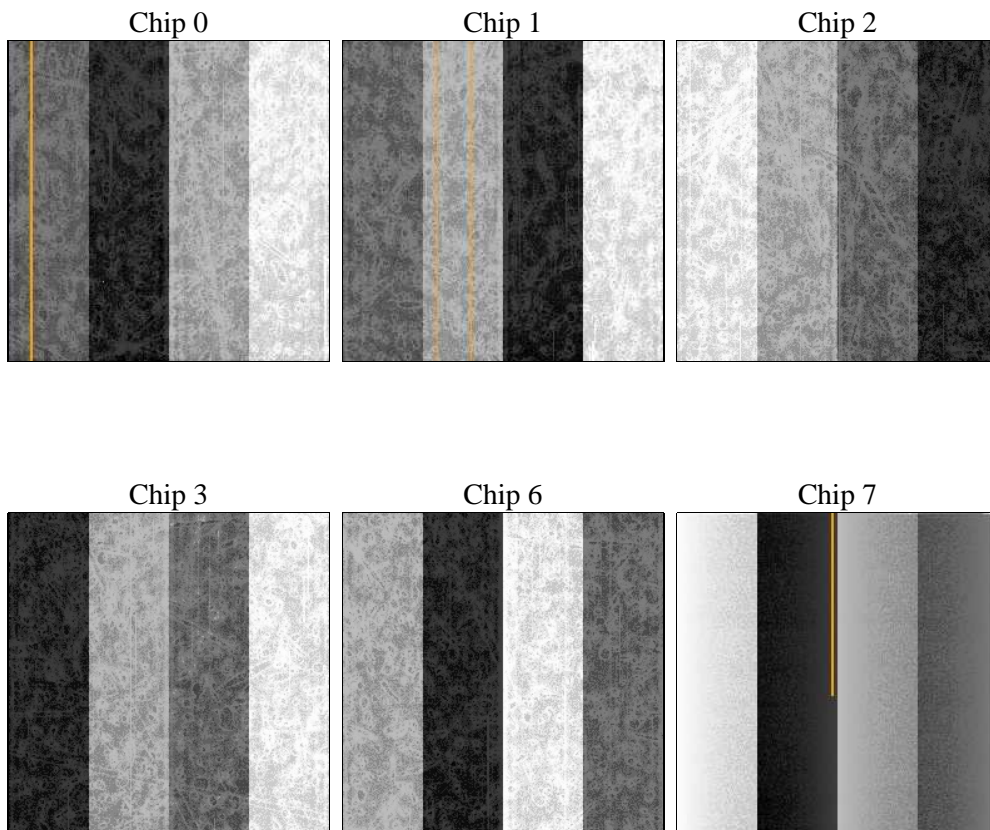
## 2 OBI

### 2.1 OBI

#### 2.1.1 Images



#### 2.1.2 Bias



### 2.1.3 Parameters

obi_num	0	Obi number	sched_exp_time	30000.000000	[s] Scheduled observation exposure time
ascdsver	8.4.4	Processing system revision	ontime	30035.118067026	Sum of GTIs [s]
caldbver	4.4.9	&#160	ontime0	30038.358907878	Sum of GTIs [s]
date	2012-04-29T13:46:26	Date and time of file creation	ontime1	30035.117917657	Sum of GTIs [s]
revision	2	Processing version of data	ontime2	30035.117927611	Sum of GTIs [s]
			ontime3	30035.118067026	Sum of GTIs [s]
			ontime6	30038.358887911	Sum of GTIs [s]
			ontime7	30041.599888146	Sum of GTIs [s]
			l1events	1334145	Number of level 1 events

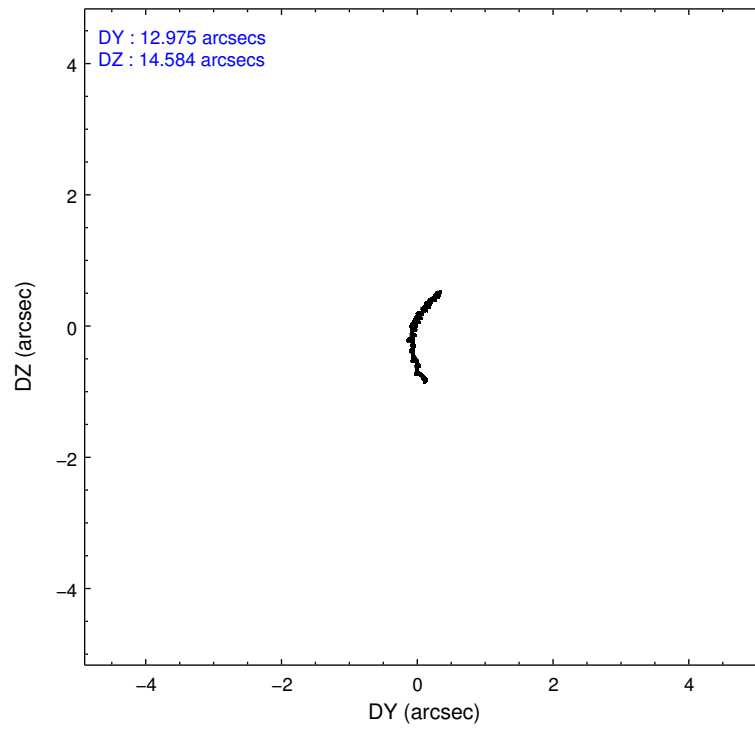
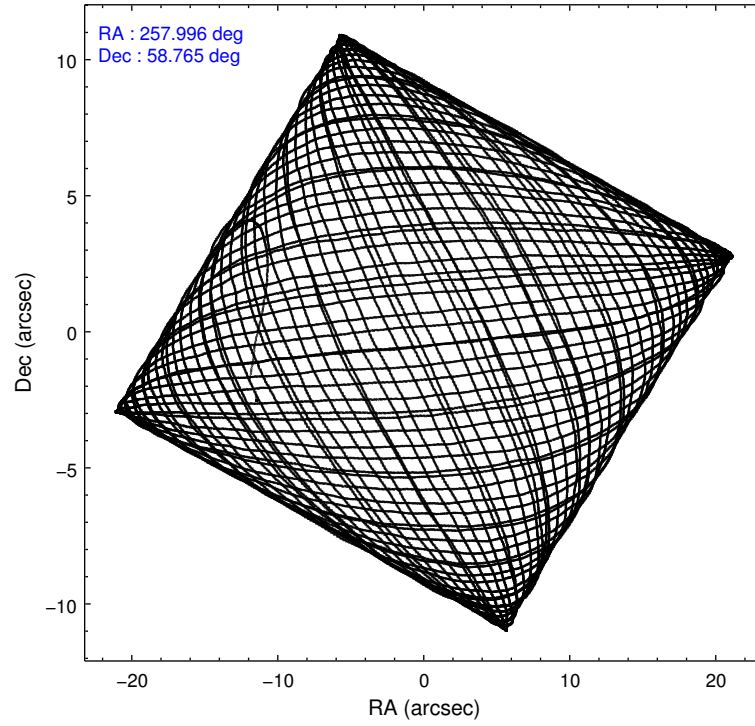
### 2.1.4 Events

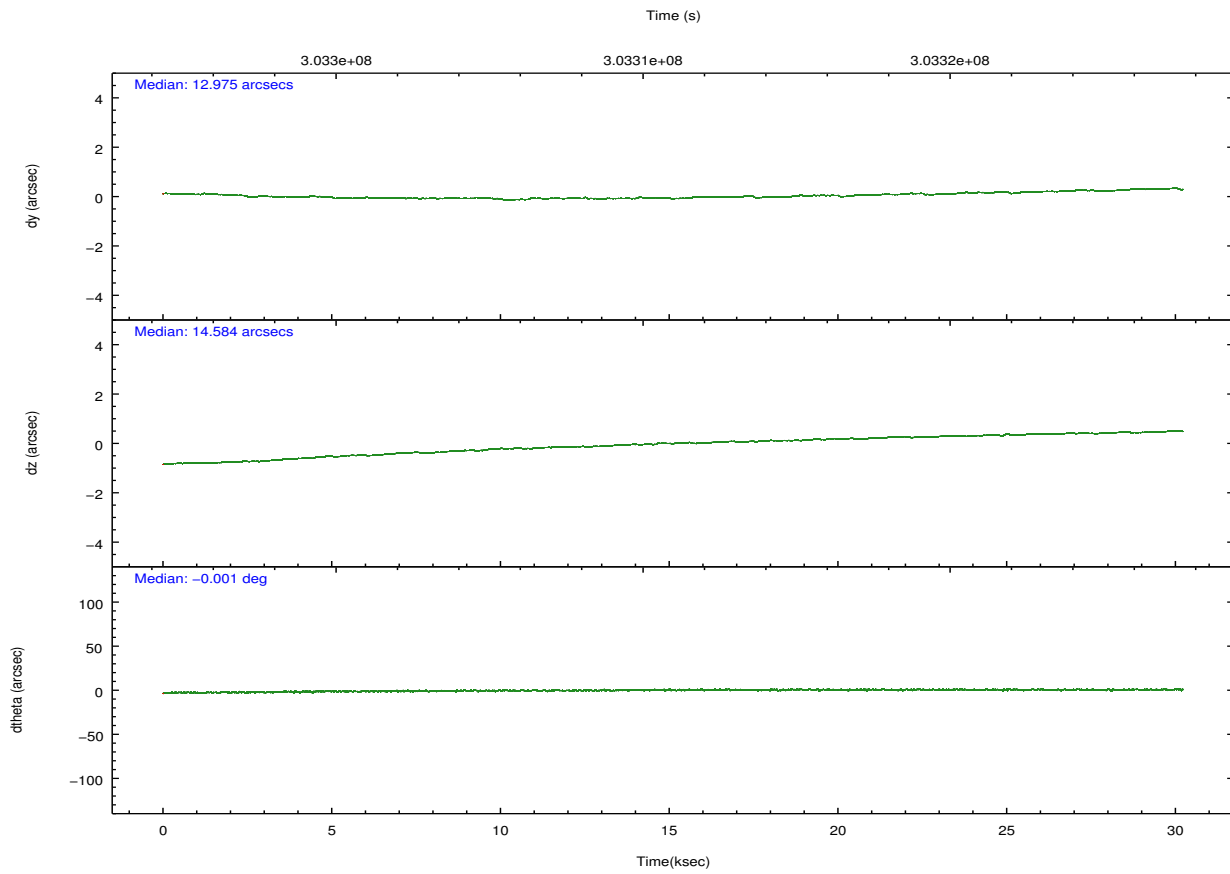
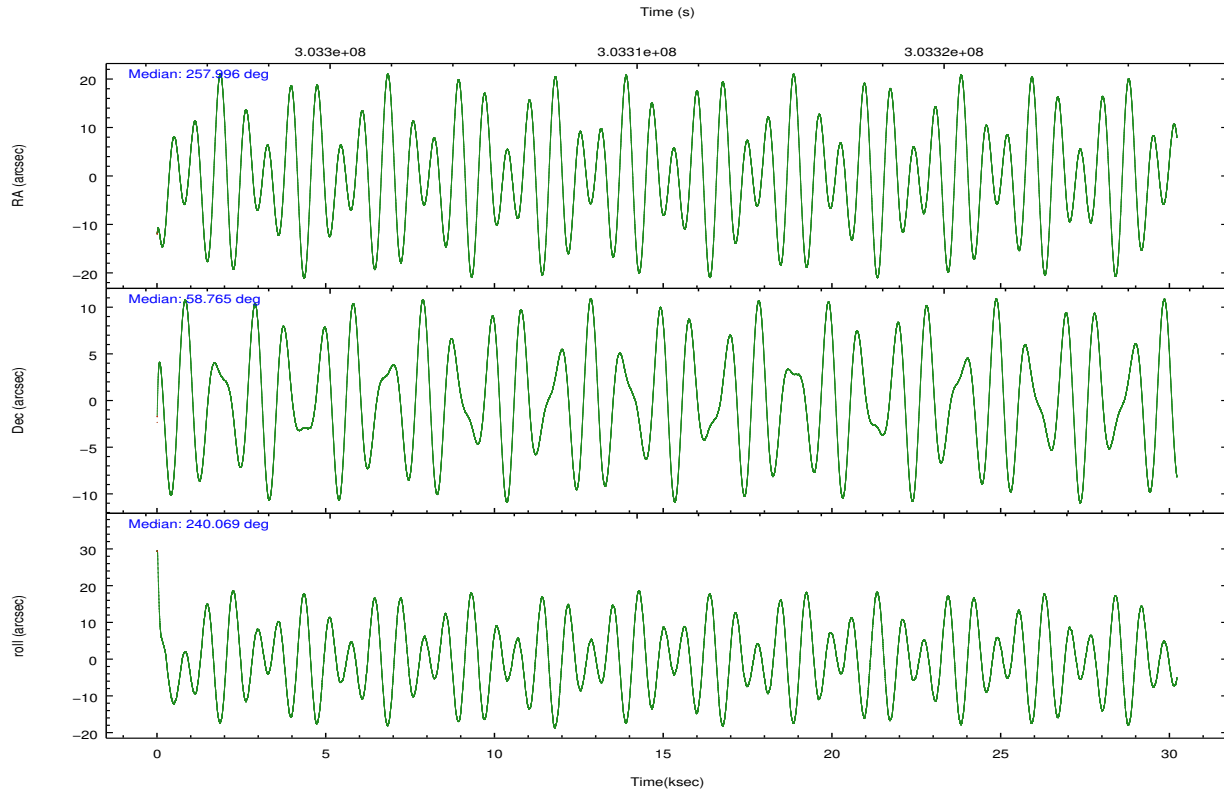
	ccd 0	ccd 1	ccd 2	ccd 3	ccd 6	ccd 7		ccd 0	ccd 1	ccd 2	ccd 3	ccd 6	ccd 7
level 1 events	211239	206470	241546	228632	232902	213356	grade 0 events	8189	8437	8319	8598	8245	10969
rejected events	189218	182918	219797	206578	210006	107693		3%	4%	3%	3%	3%	5%
rejected %	89%	88%	90%	90%	90%	50%	grade 1 events	124	112	123	161	91	313
								0%	0%	0%	0%	0%	0%
							grade 2 events	5406	5216	5173	4683	5054	22534
								2%	2%	2%	2%	2%	10%
							grade 3 events	2438	2749	2229	2494	2440	9862
								1%	1%	0%	1%	1%	4%
							grade 4 events	2213	2562	2401	2311	2462	10006
								1%	1%	0%	1%	1%	4%
							grade 5 events	6248	7233	6067	7837	7799	22984
								2%	3%	2%	3%	3%	10%
							grade 6 events	3777	4595	3632	3971	4698	52308
								1%	2%	1%	1%	2%	24%
							grade 7 events	182844	175566	213602	198577	202113	84380
								86%	85%	88%	86%	86%	39%

## 2.2 Compared Parameters

Parameter	Planned	Actual	Parameter	Planned	Actual
Instrument	ACIS	ACIS	Obspar format version number	7	7
Detector	ACIS-012367	ACIS-012367	Obspar file type	PREDICTED	ACTUAL
Grating	NONE	NONE	Obspar update status	NONE	UPDATED
Data mode	VFAINT	VFAINT	CCD I0 on	Y	Y
Observation mode	POINTING	POINTING	CCD I1 on	Y	Y
[deg] Pointing RA	257.995986	257.9962594230851	CCD I2 on	Y	Y
[deg] Pointing Dec	58.792248	58.76476318087526	CCD I3 on	Y	Y
[deg] Pointing Roll	239.868454	240.0769128523599	CCD S0 on	N	N
[mm] SIM focus pos	-0.782348	-0.7809083437167272	CCD S1 on	N	N
[mm] SIM defocus	0	0.001439871863259334	CCD S2 on	O1	Y
[mm] SIM translation stage pos	-233.992463	-233.9897249090783	CCD S3 on	O2	Y
[mm] SIM translation stage offset	0.4	0.3972719061486032	CCD S4 on	N	N
[s] Observation start time (MET)	303296094.184000	303295060.07526	CCD S5 on	N	N
Observation start date	2007-08-12T08:53:49	2007-08-12T08:37:40	Number of optional ACIS chips dropped	0	0
[s] Observation end time (MET)	303326094.184000	303326974.98929	On-chip summing requested	N	N
Observation end date	2007-08-12T17:13:49	2007-08-12T17:29:34	Subarray requested	NONE	NONE
Read mode	TIMED	TIMED	Alternating exposures requested	N	N
			[s] Primary exposure time	0.000000	3.2

## 2.3 Aspect



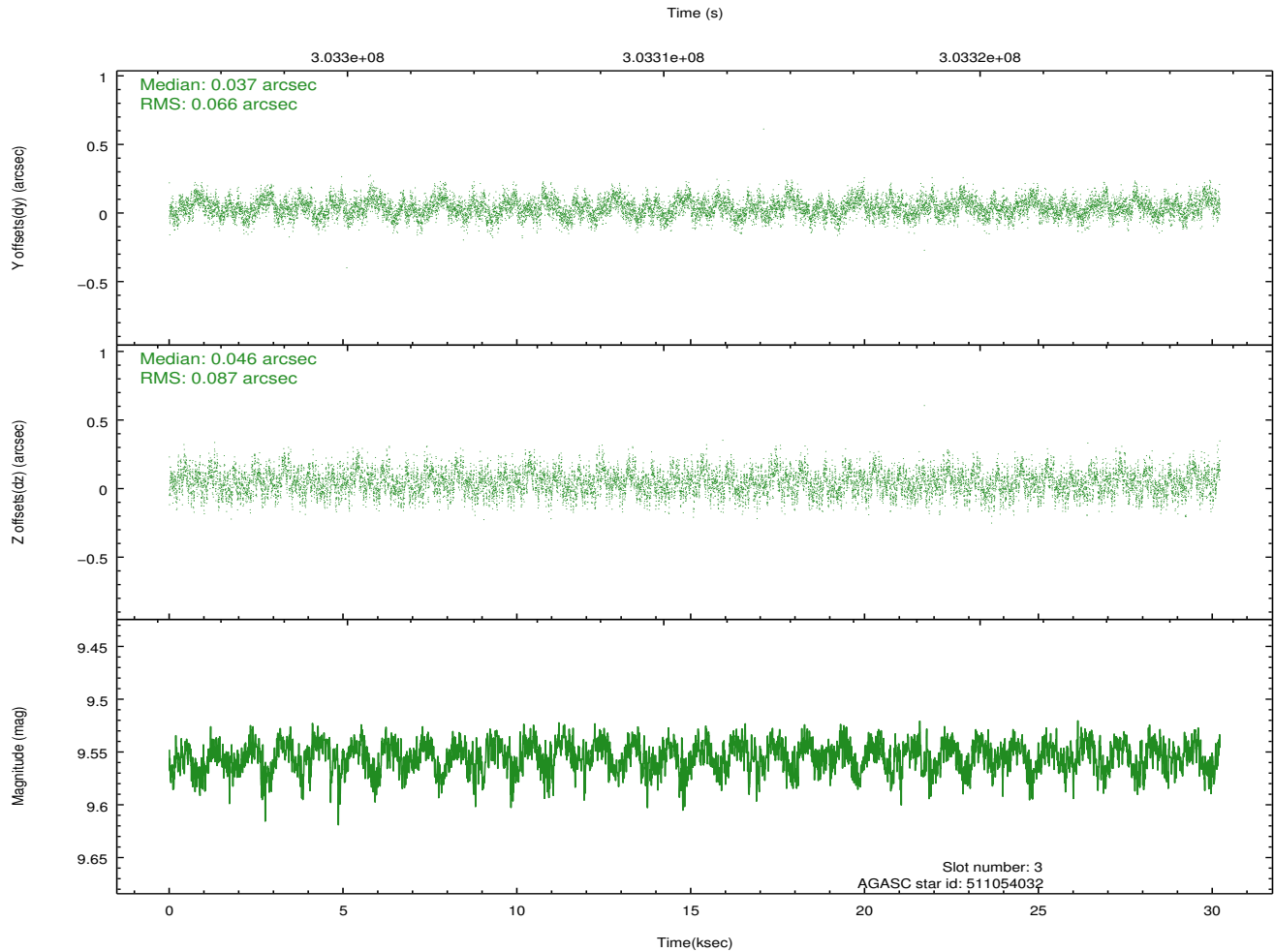
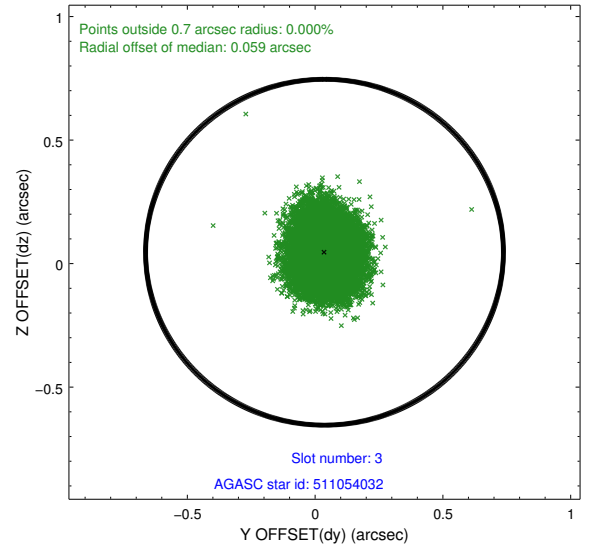
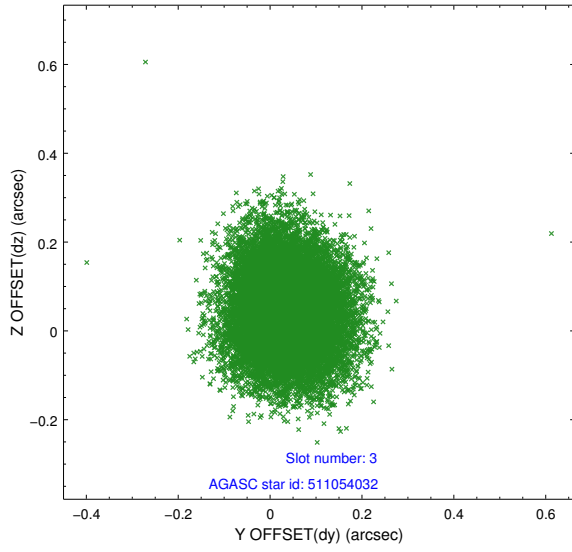


### Slot Statistics

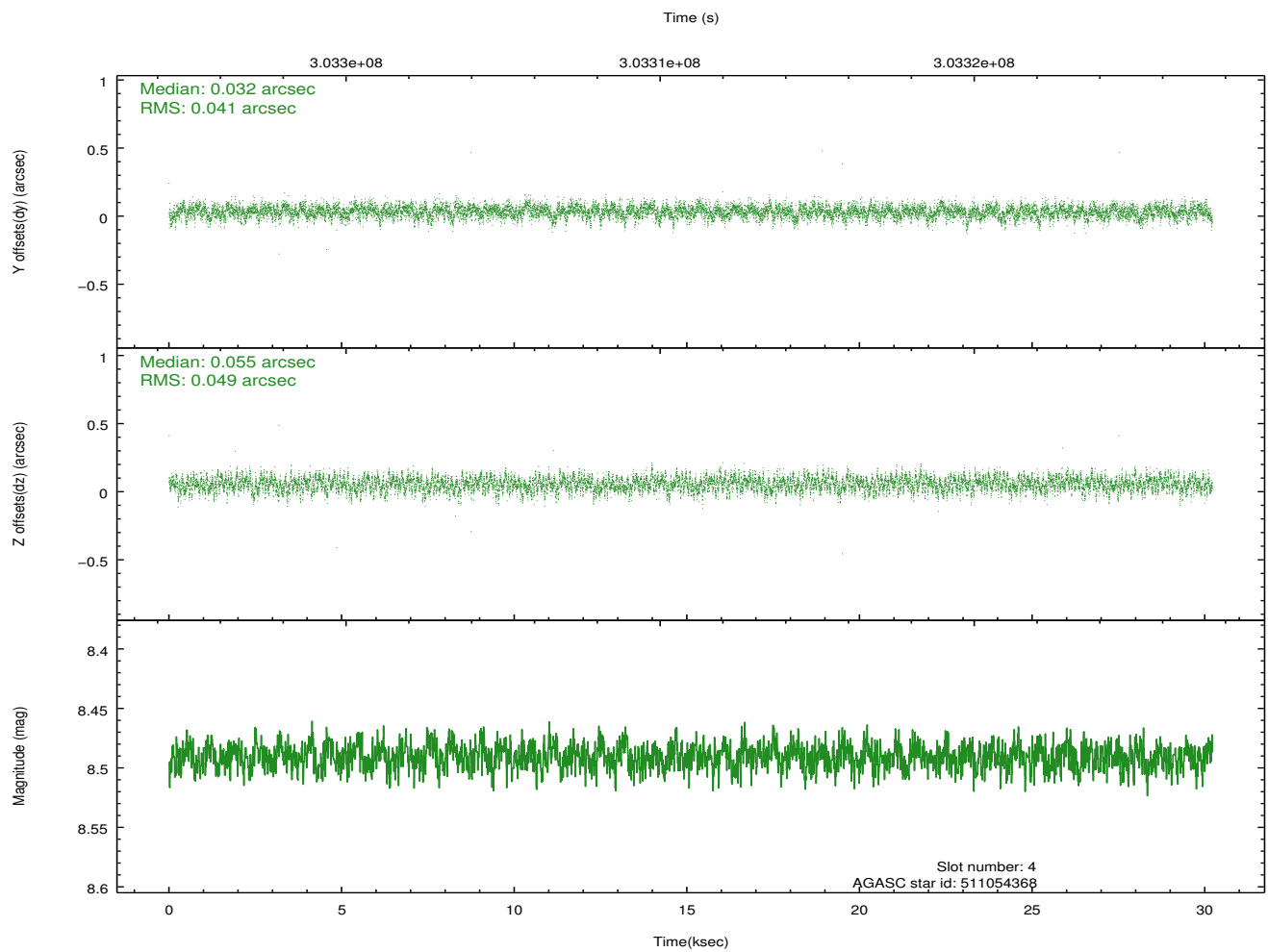
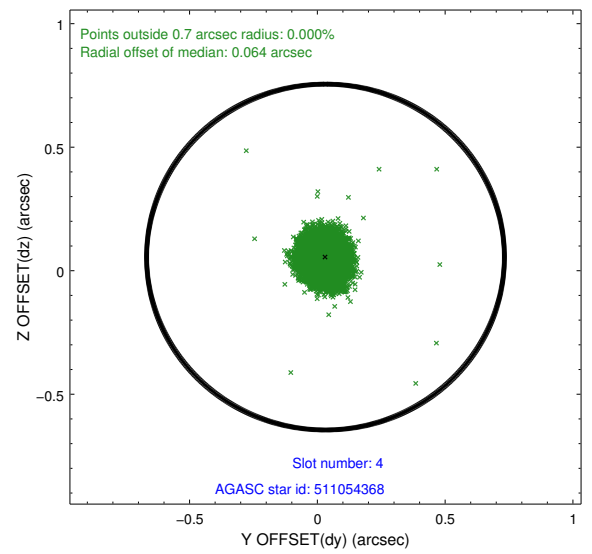
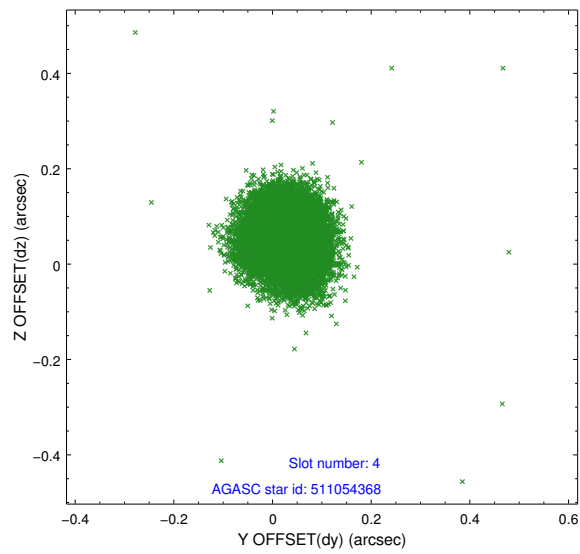
slot	status	id	mag	n_pts	med_dy	med_dz	dr1	dr2	ra	dec	mean_y	mean_z
0	FID	ACIS-I-1	7.23	7371	0.075	-0.064	0.012	0.025	0.000000	0.000000	926.57	-829.91
1	FID	ACIS-I-5	7.22	7369	-0.227	0.068	0.011	0.018	0.000000	0.000000	-1821.77	1067.71
2	FID	ACIS-I-6	7.23	7371	0.059	0.066	0.011	0.020	0.000000	0.000000	392.06	1712.26
3	GUIDE	511054032	9.55	14723	0.037	0.046	0.118	0.186	257.394174	59.173192	-632.68	-1651.10
4	GUIDE	511054368	8.49	14738	0.032	0.055	0.068	0.109	258.802827	59.200920	-2026.64	542.98
5	GUIDE	511057064	8.14	14739	-0.021	-0.072	0.057	0.090	258.361245	58.524833	486.63	1076.40
6	GUIDE	511060000	9.19	14720	0.098	0.200	0.100	0.164	257.823386	59.030766	-581.97	-707.25
7	GUIDE	511060032	8.08	14738	-0.155	-0.234	0.066	0.108	258.682566	58.384060	614.59	1854.96

## 2.4 Star Slots

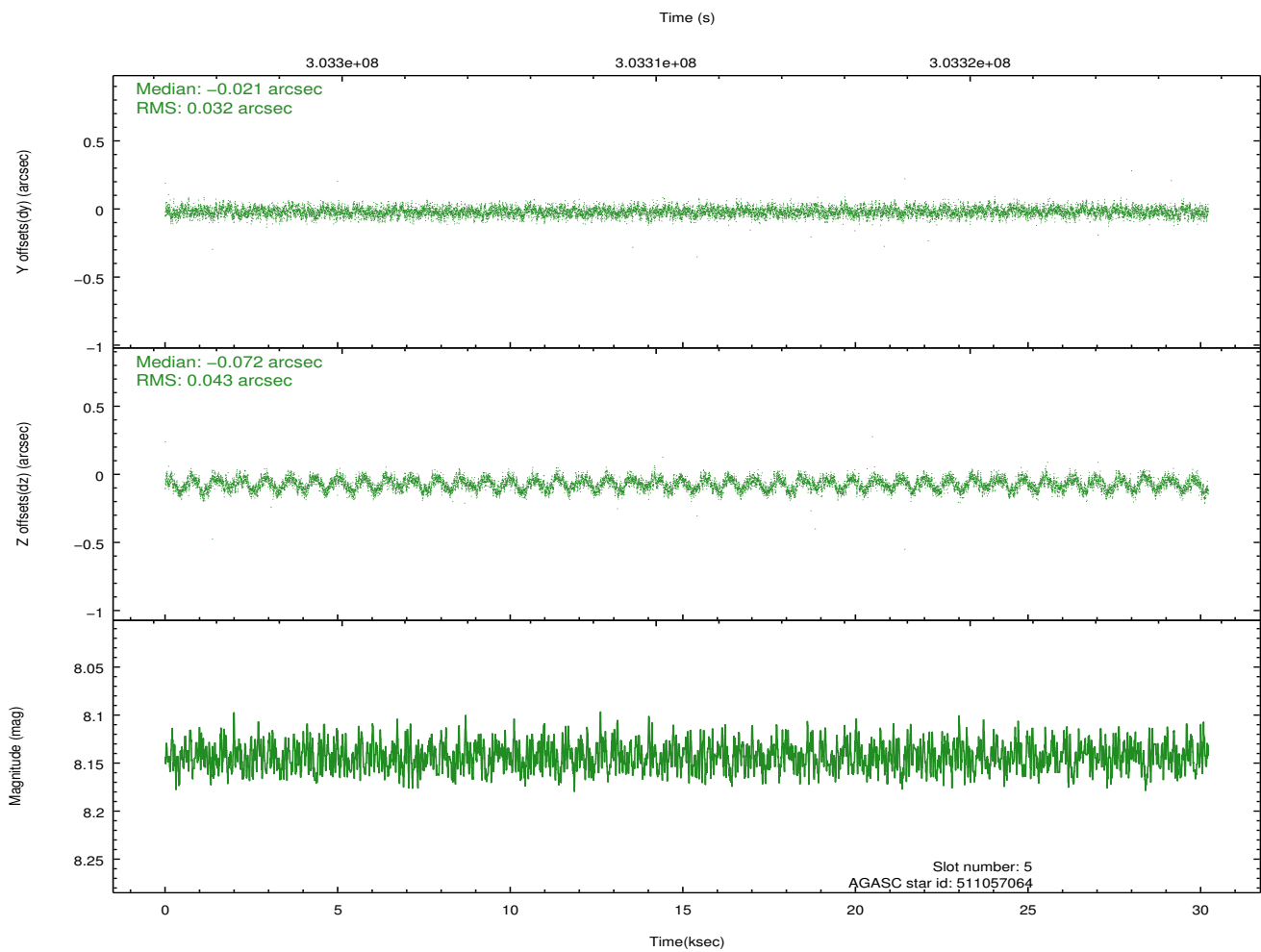
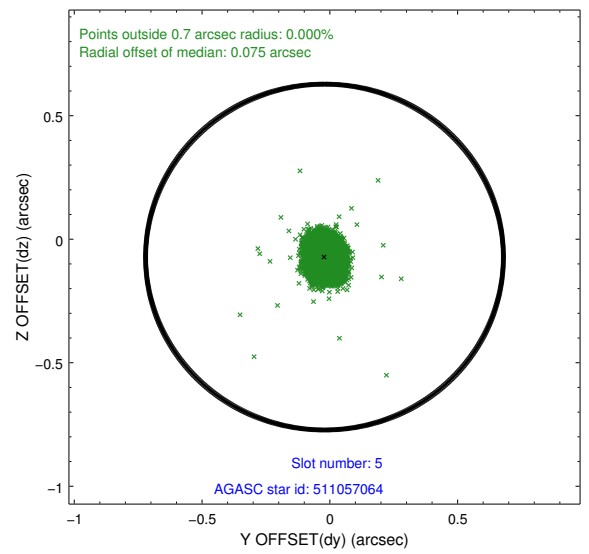
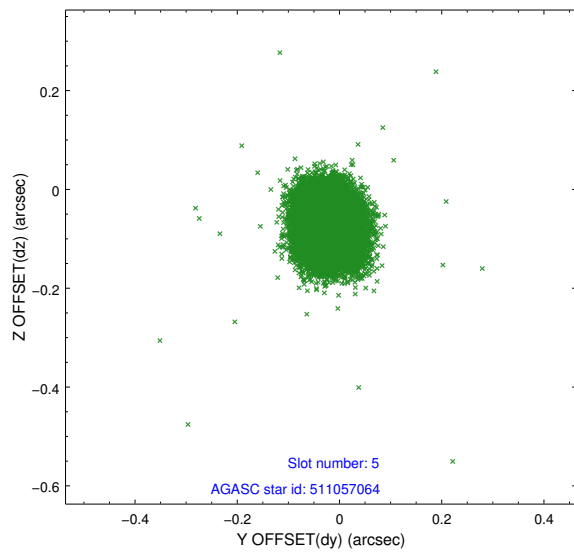
### 2.4.1 Slot 3



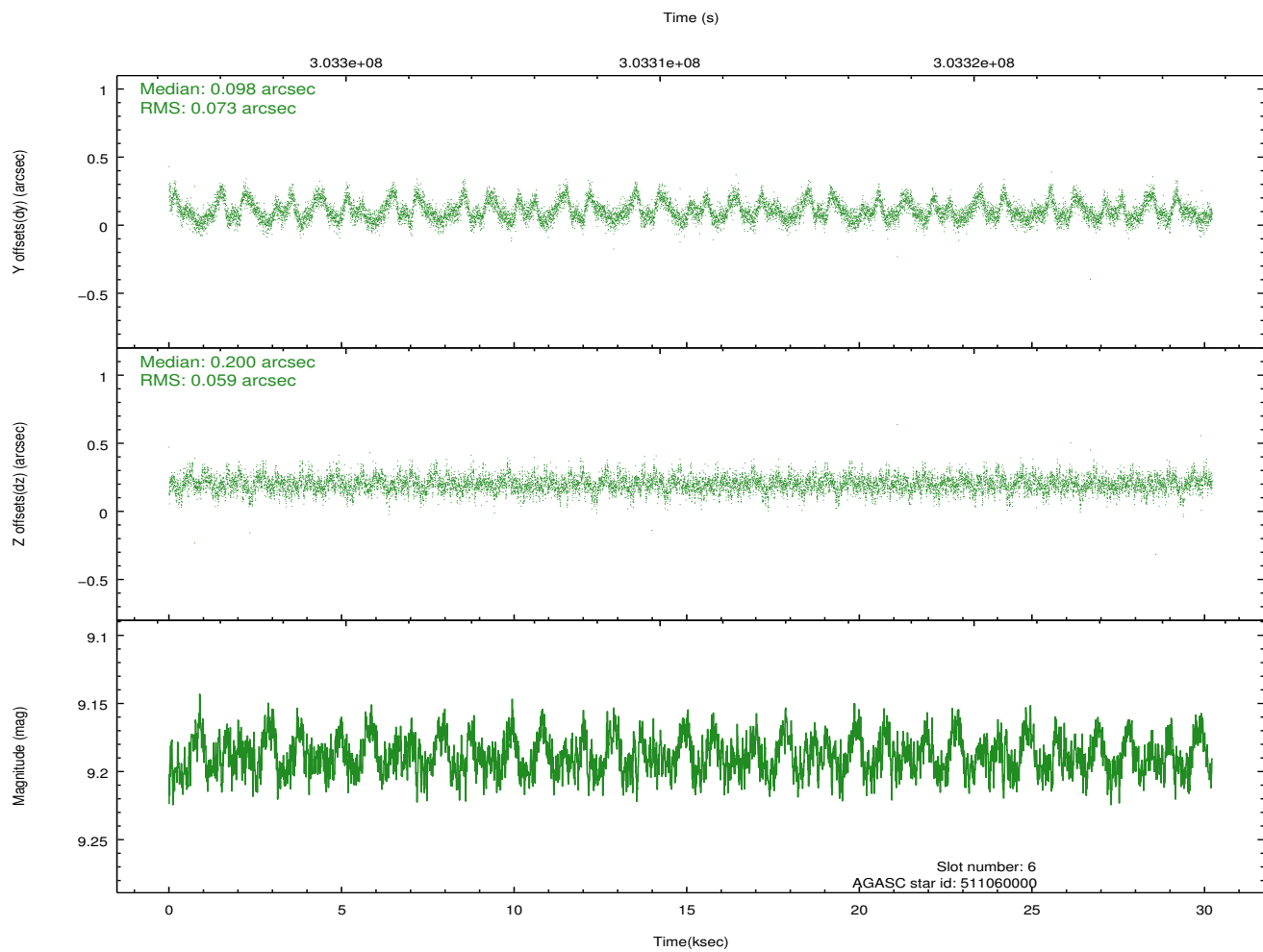
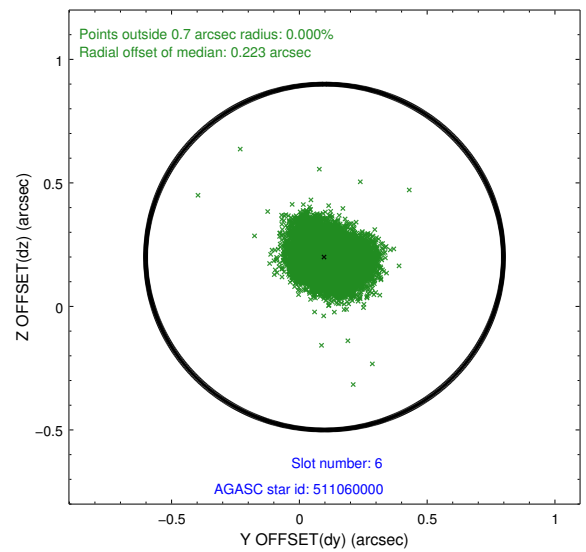
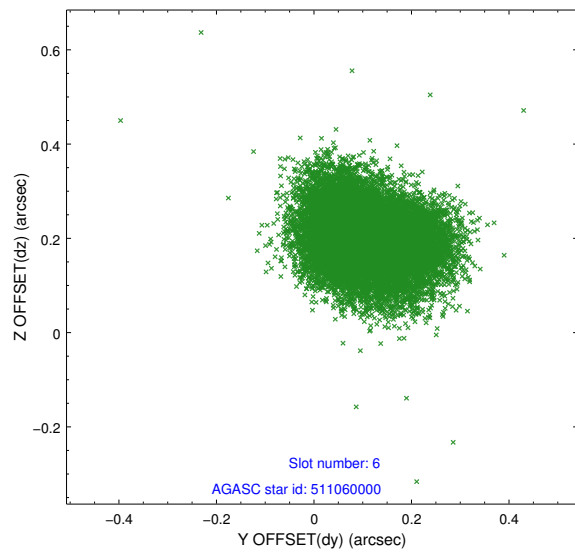
## 2.4.2 Slot 4



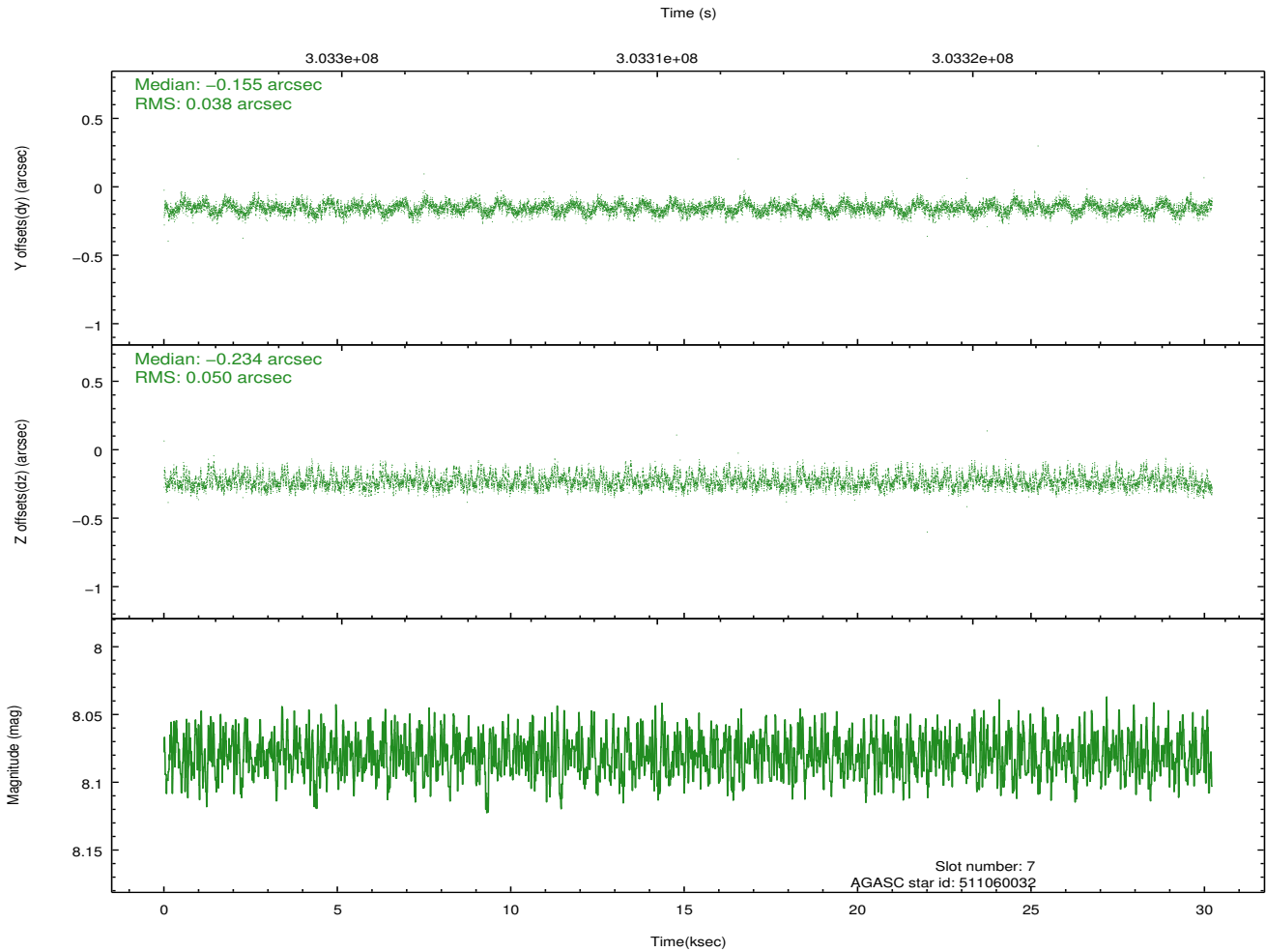
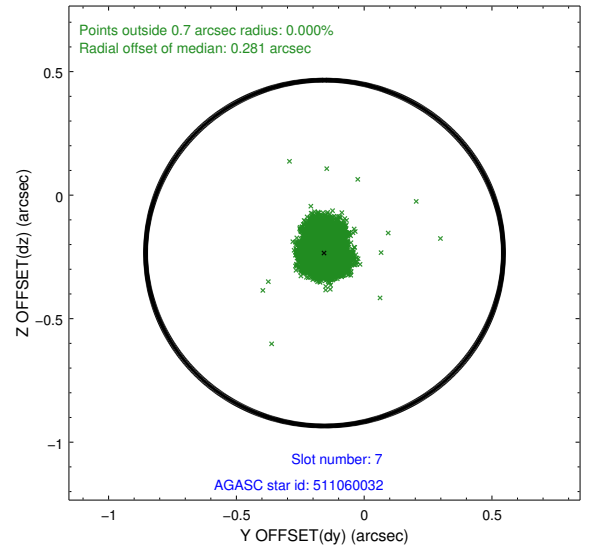
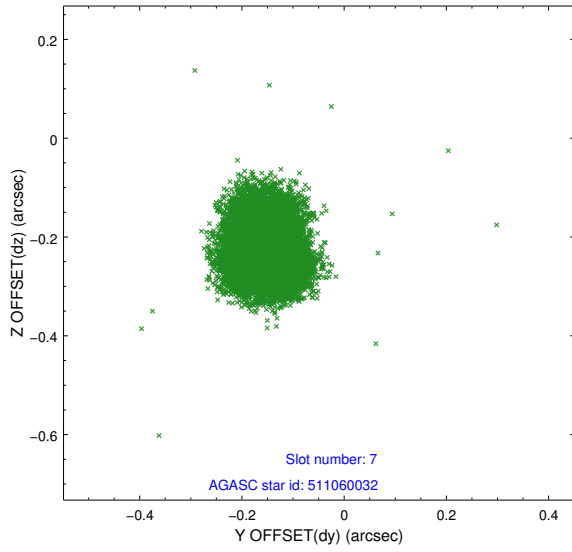
### 2.4.3 Slot 5



## 2.4.4 Slot 6

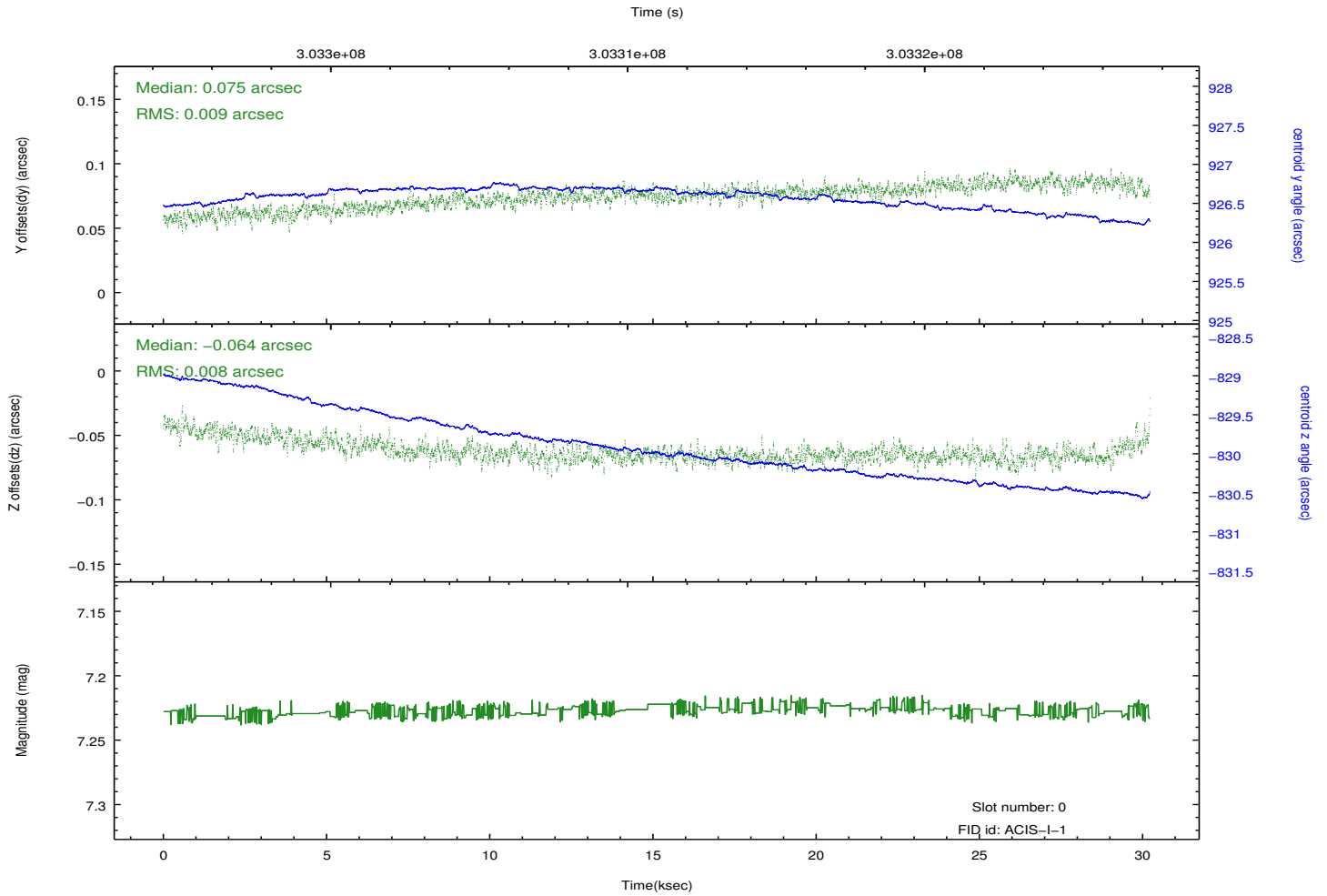
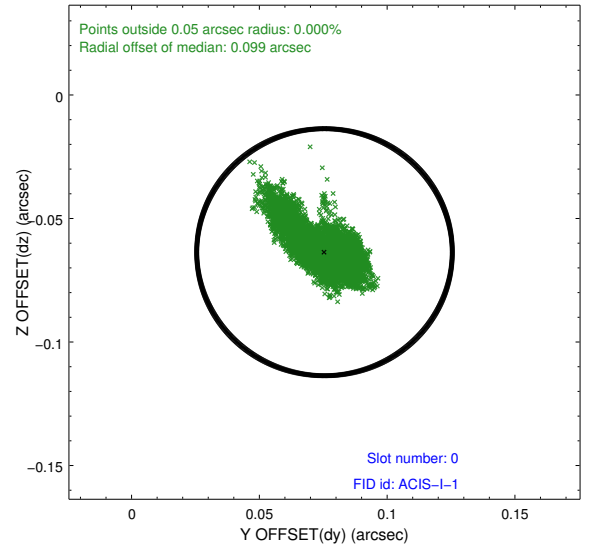
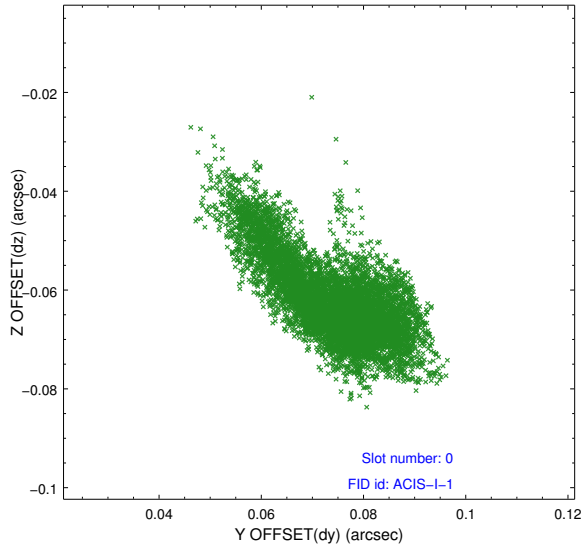


### 2.4.5 Slot 7

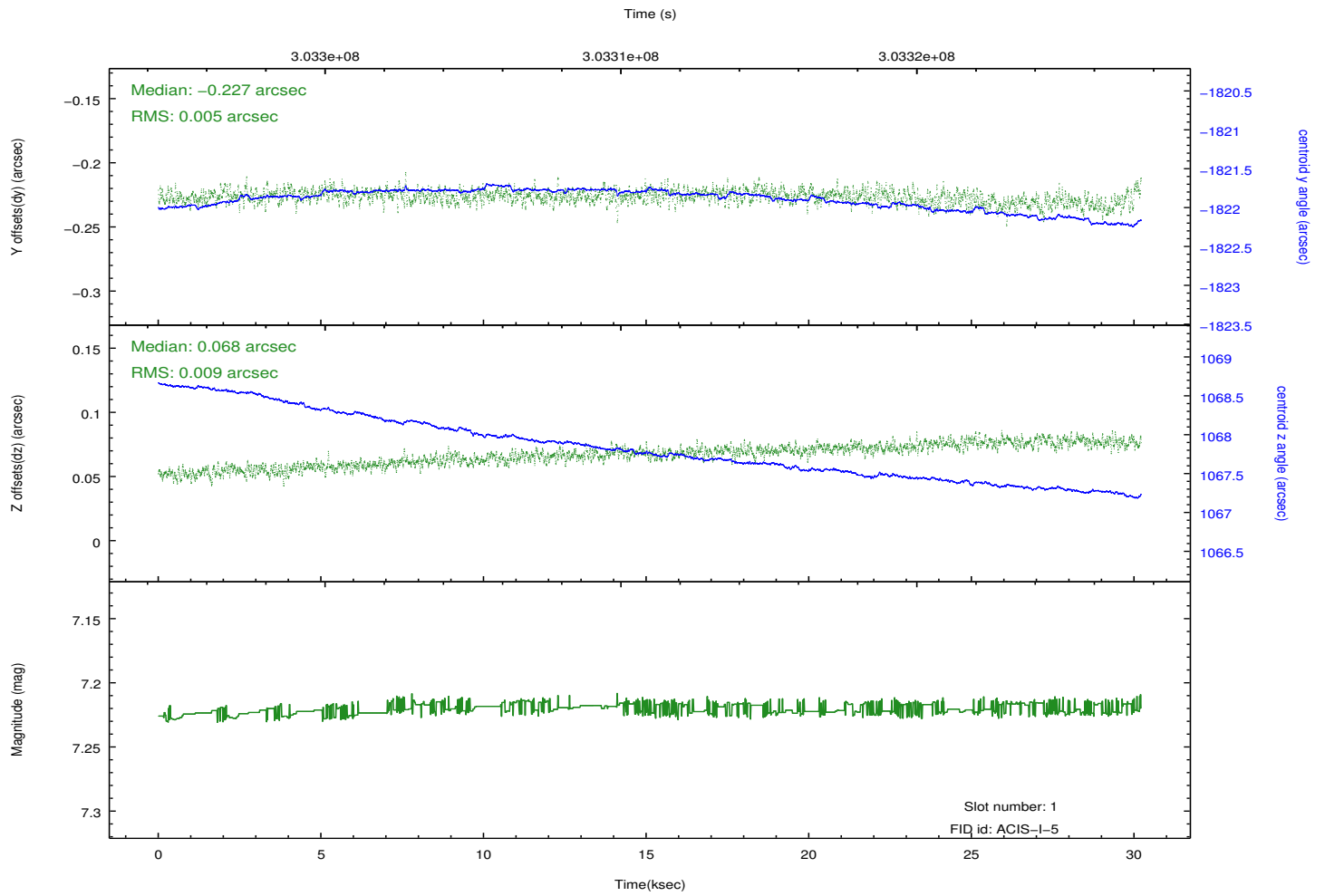
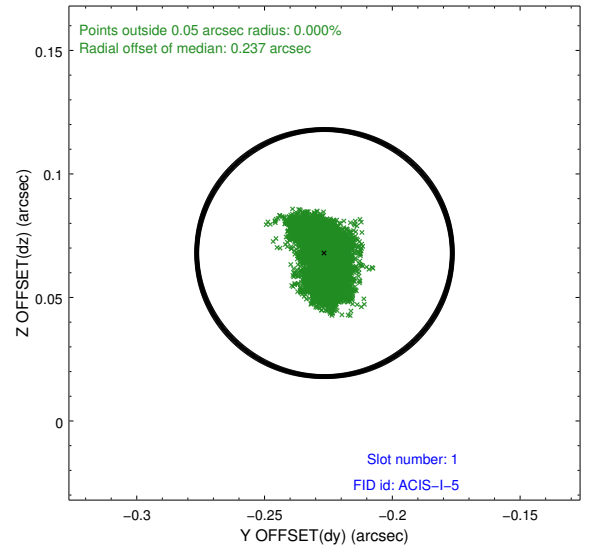
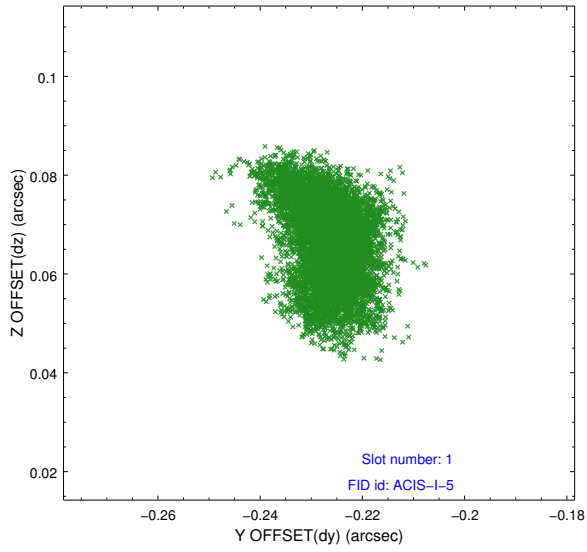


## 2.5 FID Slots

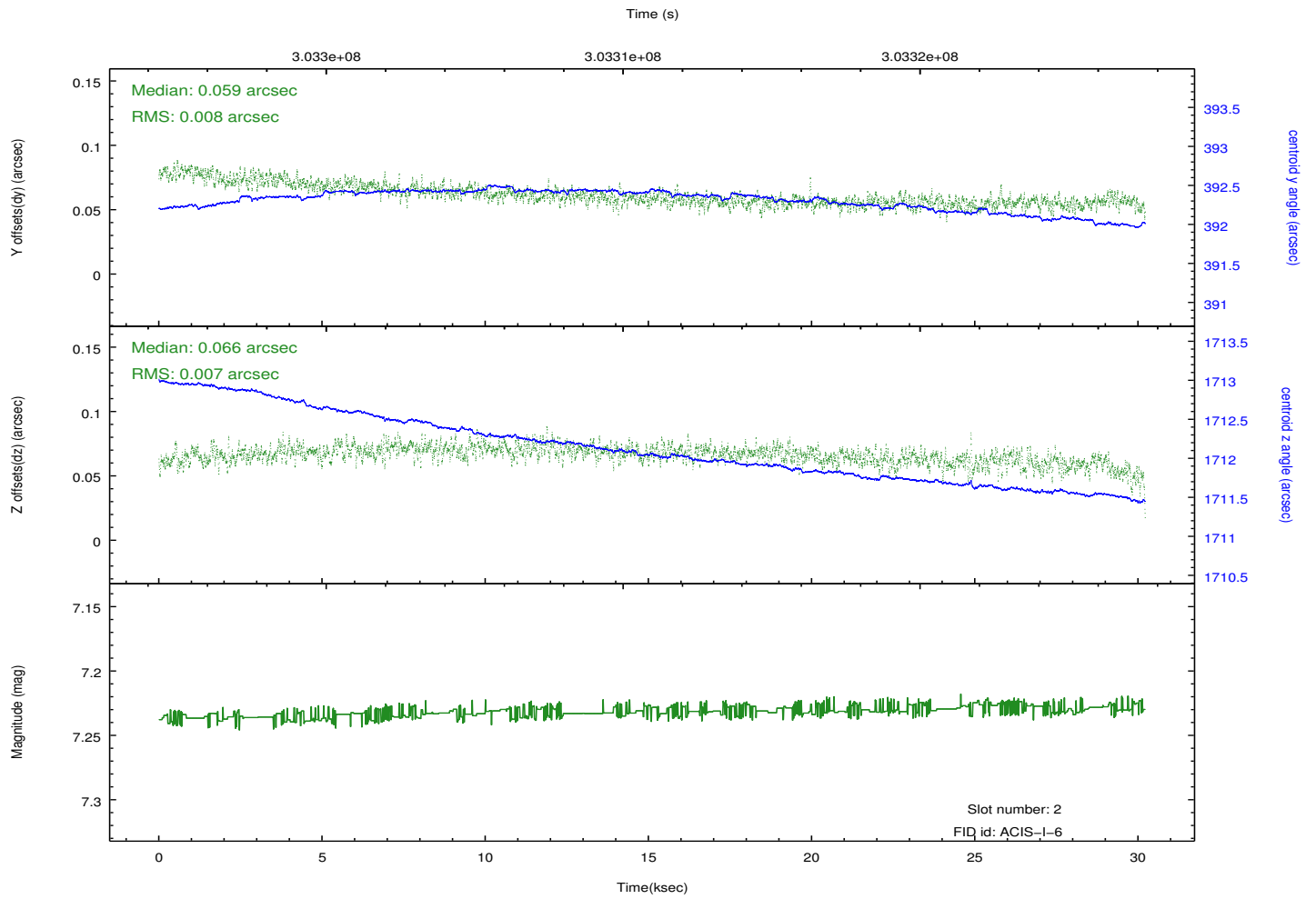
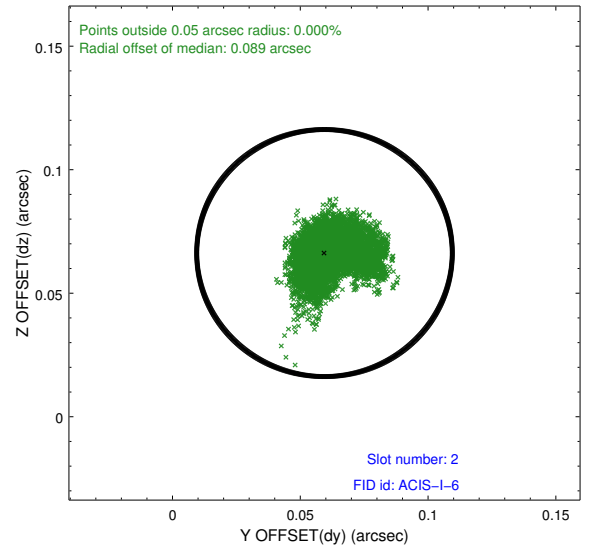
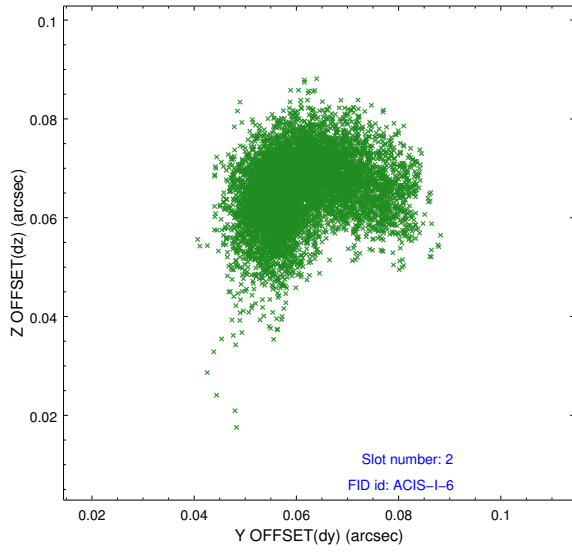
### 2.5.1 Slot 0



## 2.5.2 Slot 1



### 2.5.3 Slot 2



# A Summary

## A.1 Status

V&V Scientist	Beth Sundheim
V&V Date (YYYY-MM-DD)	2012.05.02
V&V Edition	1
V&V Disposition and Status	OK
V&V Charge Time	30.035118

## A.2 Comments