

# V&V Reference Report

## L2 ASCDS Version : 8.4.4

Observation 7877 - L2 Version 2  
Chandra X-Ray Center

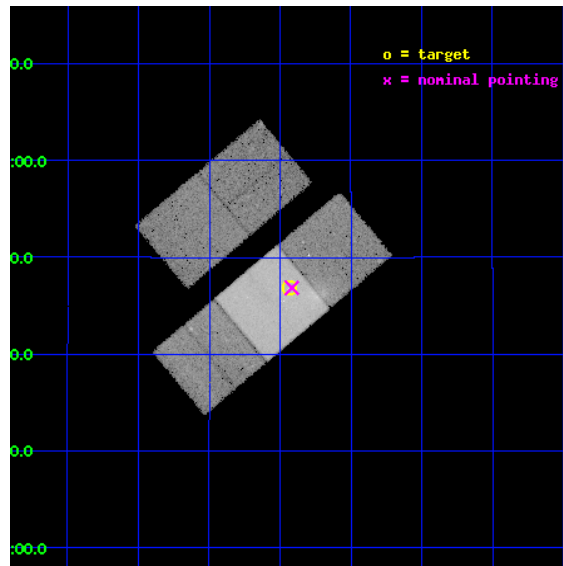
L2 Processing Date : Apr 28 2012

## Contents

<b>1</b>	<b>Front</b>	<b>2</b>
<b>2</b>	<b>OBI</b>	<b>3</b>
2.1	OBI . . . . .	3
2.1.1	Images . . . . .	3
2.1.2	Bias . . . . .	3
2.1.3	Parameters . . . . .	4
2.1.4	Events . . . . .	4
2.2	Compared Parameters . . . . .	5
2.3	Aspect . . . . .	6
2.4	Star Slots . . . . .	9
2.4.1	Slot 3 . . . . .	9
2.4.2	Slot 4 . . . . .	10
2.4.3	Slot 5 . . . . .	11
2.4.4	Slot 6 . . . . .	12
2.4.5	Slot 7 . . . . .	13
2.5	FID Slots . . . . .	14
2.5.1	Slot 0 . . . . .	14
2.5.2	Slot 1 . . . . .	15
2.5.3	Slot 2 . . . . .	16
<b>A</b>	<b>Summary</b>	<b>17</b>
A.1	Status . . . . .	17
A.2	Comments . . . . .	17

# 1 Front

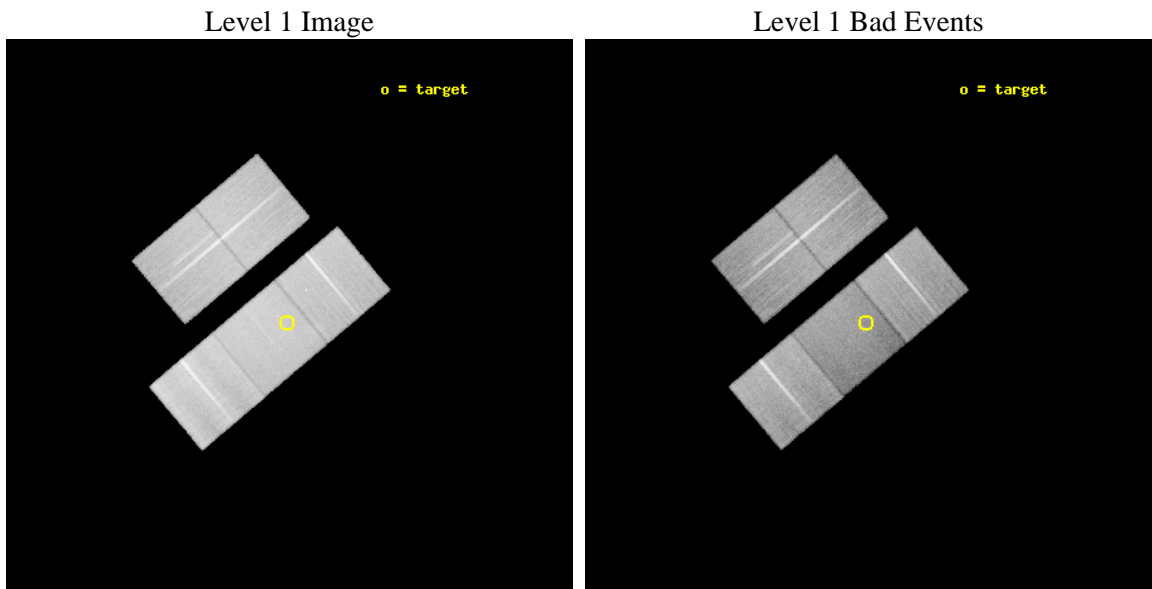
seq_num	701541	Sequence number
obs_id	7877	Observation id
title	Bent Jets in Brightest Cluster Galaxies	Proposal title
observer	Dr Nazirah Jetha	Principal investigator
object	Abell 2395	Source name
dtycycle	0	&#160
cycle	P	events from which exps? Prim/Second/Both
ra_targ	328.858979	Observer's specified target RA [deg]
dec_targ	8.780167	Observer's specified target Dec [deg]
ra_nom	328.85412506016	Nominal RA [deg]
dec_nom	8.7808795706613	Nominal Dec [deg]
roll_nom	139.91032107607	Nominal Roll [deg]
revision	2	Processing version of data
ontime	33786.900259852	Sum of GTIs [s]
livetime	33345.449534403	Livetime [s]
ontime2	33783.759249628	Sum of GTIs [s]
ontime3	33786.900259852	Sum of GTIs [s]
ontime6	33783.75927949	Sum of GTIs [s]
ontime7	33786.900259852	Sum of GTIs [s]
ontime8	33786.900259852	Sum of GTIs [s]
l2events	241553	Number of level 2 events



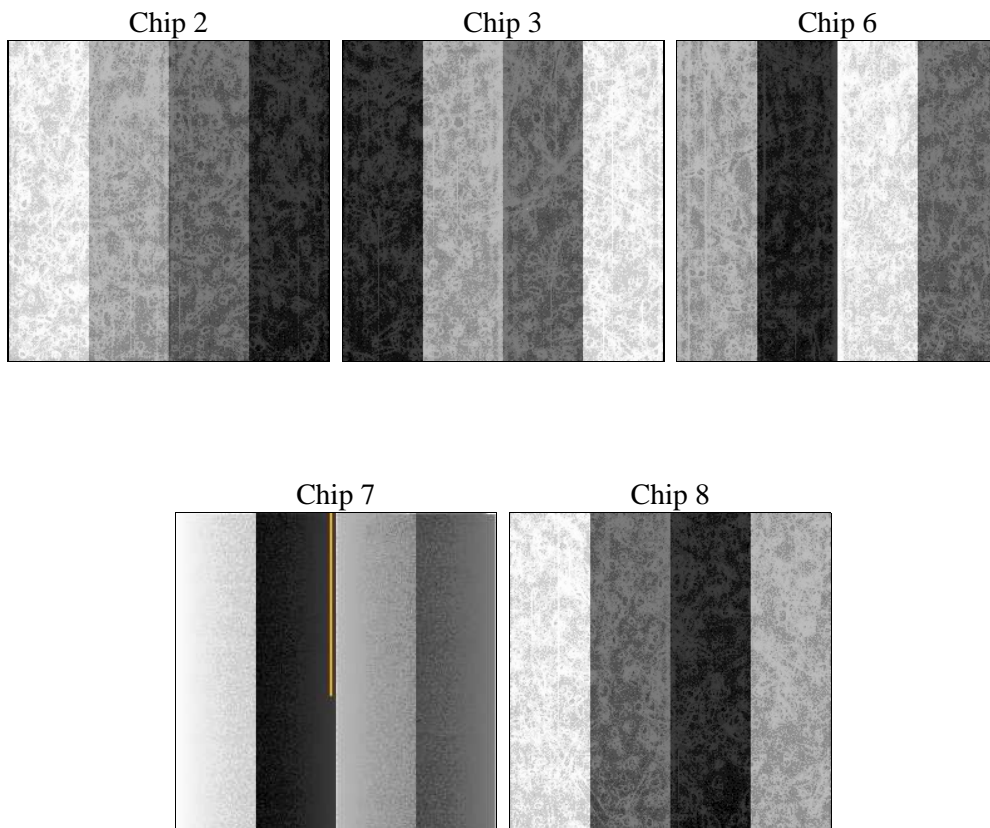
## 2 OBI

### 2.1 OBI

#### 2.1.1 Images



#### 2.1.2 Bias



### 2.1.3 Parameters

obi_num	0	Obi number	sched_exp_time	33611.000000	[s] Scheduled observation exposure time
ascdsver	8.4.4	Processing system revision	ontime	33786.900259852	Sum of GTIs [s]
caldsver	4.4.9	&#160	ontime2	33783.759249628	Sum of GTIs [s]
date	2012-04-28T16:05:22	Date and time of file creation	ontime3	33786.900259852	Sum of GTIs [s]
revision	2	Processing version of data	ontime6	33783.75927949	Sum of GTIs [s]
			ontime7	33786.900259852	Sum of GTIs [s]
			ontime8	33786.900259852	Sum of GTIs [s]
			l1events	1525226	Number of level 1 events

### 2.1.4 Events

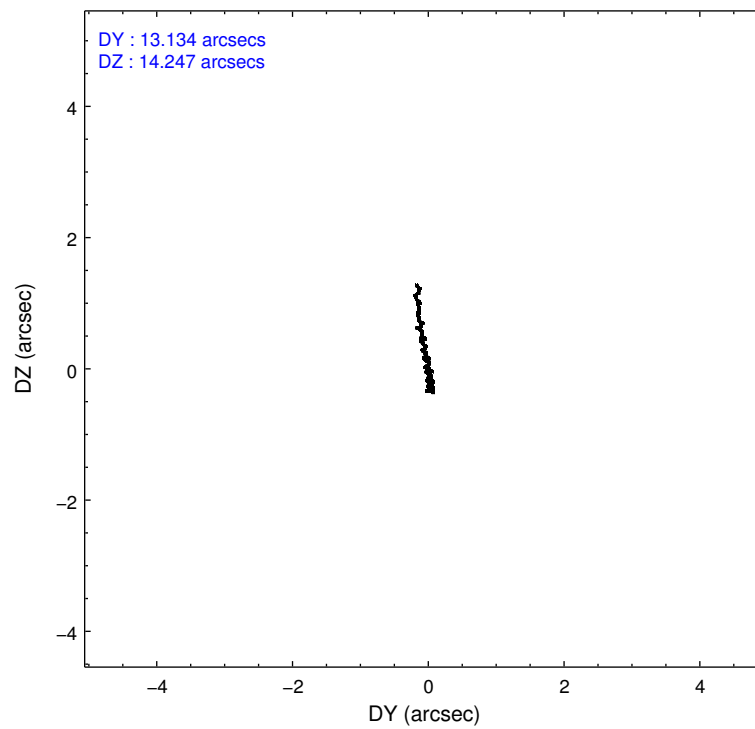
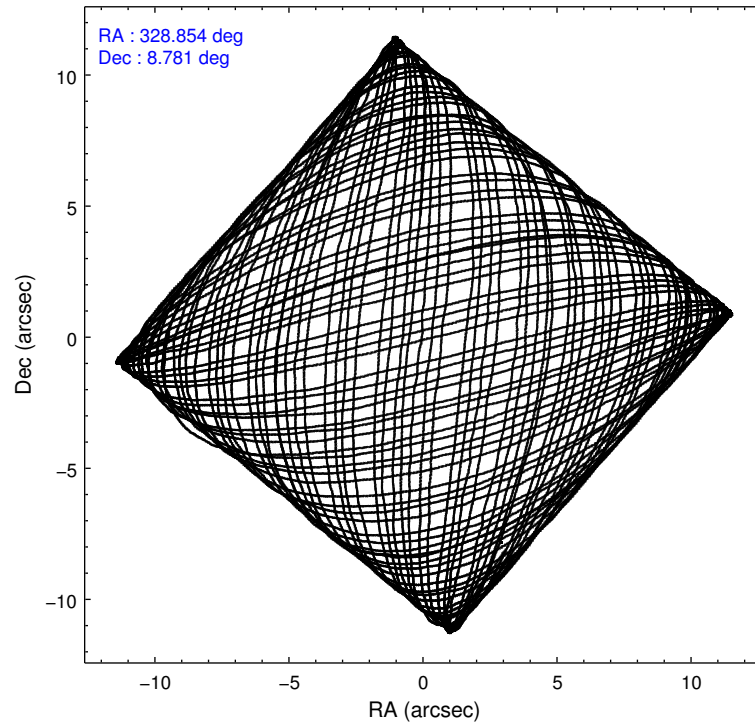
	ccd 2	ccd 3	ccd 6	ccd 7	ccd 8
level 1 events	286628	270938	289476	318137	360047
rejected events	261000	245741	257746	171593	273469
rejected %	91%	90%	89%	53%	75%

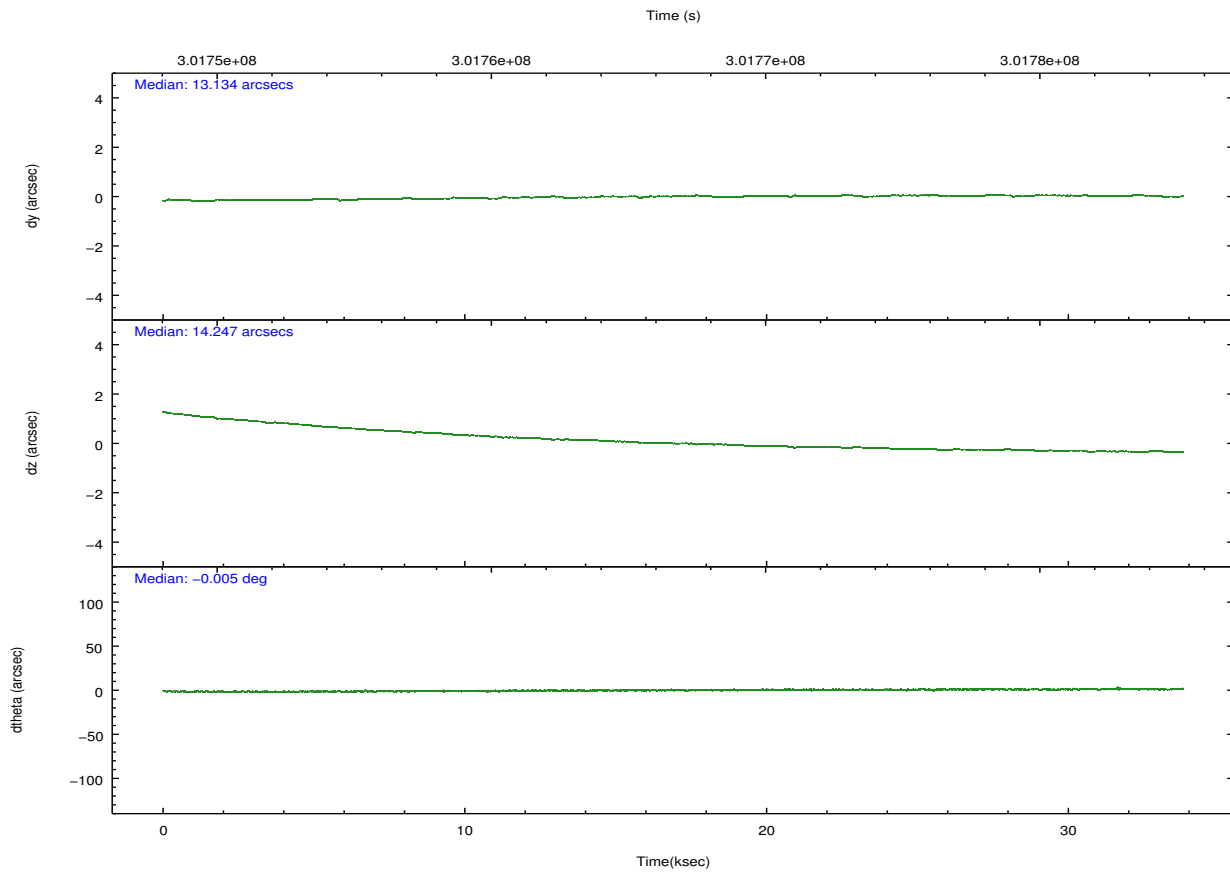
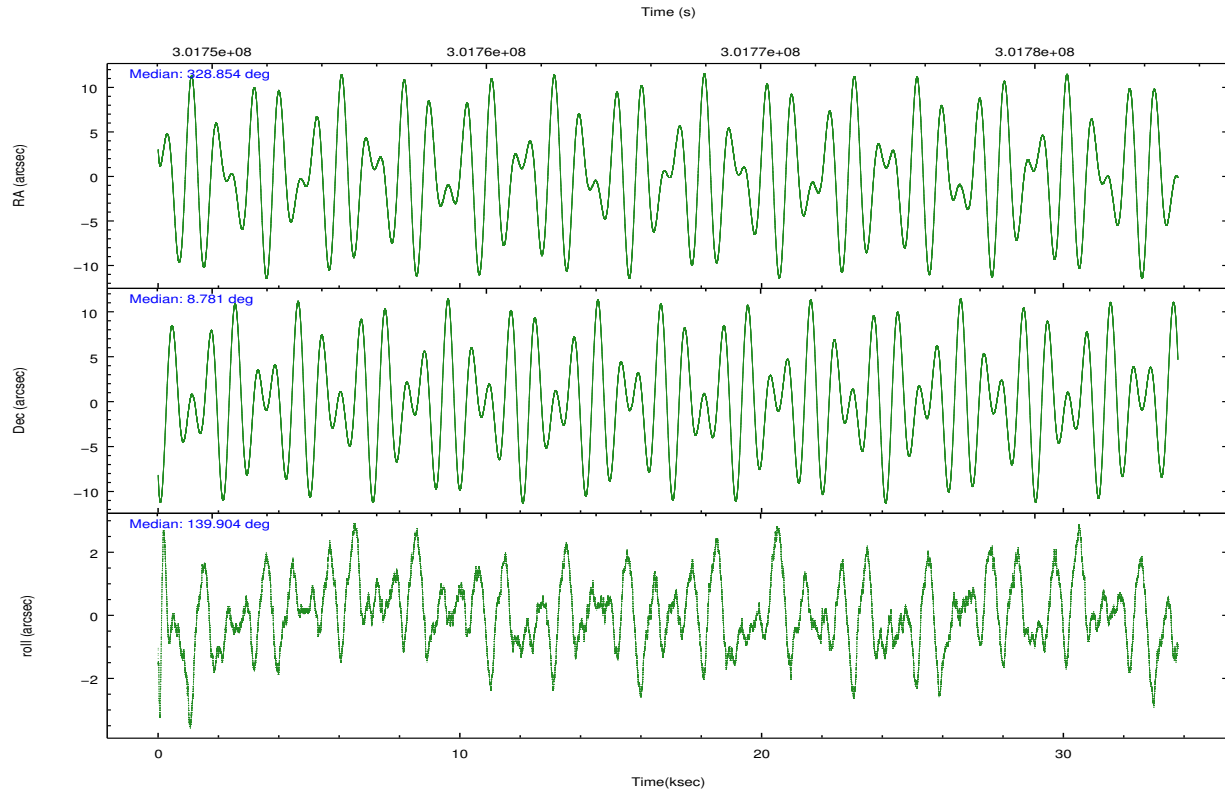
	ccd 2	ccd 3	ccd 6	ccd 7	ccd 8
grade 0 events	9152	8858	12641	15348	25980
	3%	3%	4%	4%	7%
grade 1 events	175	139	156	349	300
	0%	0%	0%	0%	0%
grade 2 events	6176	5618	6641	30482	19889
	2%	2%	2%	9%	5%
grade 3 events	2864	3013	3278	13610	9359
	0%	1%	1%	4%	2%
grade 4 events	2936	2867	3188	13483	8649
	1%	1%	1%	4%	2%
grade 5 events	8568	11083	11120	32491	16393
	2%	4%	3%	10%	4%
grade 6 events	4743	5090	6287	74939	23379
	1%	1%	2%	23%	6%
grade 7 events	252014	234270	246165	137435	256098
	87%	86%	85%	43%	71%

## 2.2 Compared Parameters

Parameter	Planned	Actual	Parameter	Planned	Actual
Instrument	ACIS	ACIS	Obspar format version number	7	7
Detector	ACIS-23678	ACIS-23678	Obspar file type	PREDICTED	ACTUAL
Grating	NONE	NONE	Obspar update status	NONE	UPDATED
Data mode	VFAINT	VFAINT	CCD I0 on	N	N
Observation mode	POINTING	POINTING	CCD I1 on	N	N
[deg] Pointing RA	328.881431	328.8541250601623	CCD I2 on	O1	Y
[deg] Pointing Dec	8.776457	8.780879570661273	CCD I3 on	O2	Y
[deg] Pointing Roll	139.749524	139.9103210760718	CCD S0 on	N	N
[mm] SIM focus pos	-0.684267	-0.6828225247311905	CCD S1 on	N	N
[mm] SIM defocus	0	0.001444936568705701	CCD S2 on	O3	Y
[mm] SIM translation stage pos	-190.132523	-190.1400660498719	CCD S3 on	Y	Y
[mm] SIM translation stage offset	0	0.00754346686406393	CCD S4 on	O4	Y
[s] Observation start time (MET)	301749912.184000	301748752.68856	CCD S5 on	N	N
Observation start date	2007-07-25T11:24:07	2007-07-25T11:05:52	Number of optional ACIS chips dropped	0	0
[s] Observation end time (MET)	301783523.184000	301784448.31527	On-chip summing requested	N	N
Observation end date	2007-07-25T20:44:18	2007-07-25T21:00:48	Subarray requested	NONE	NONE
Read mode	TIMED	TIMED	Alternating exposures requested	N	N
			[s] Primary exposure time	0.000000	3.1

## 2.3 Aspect



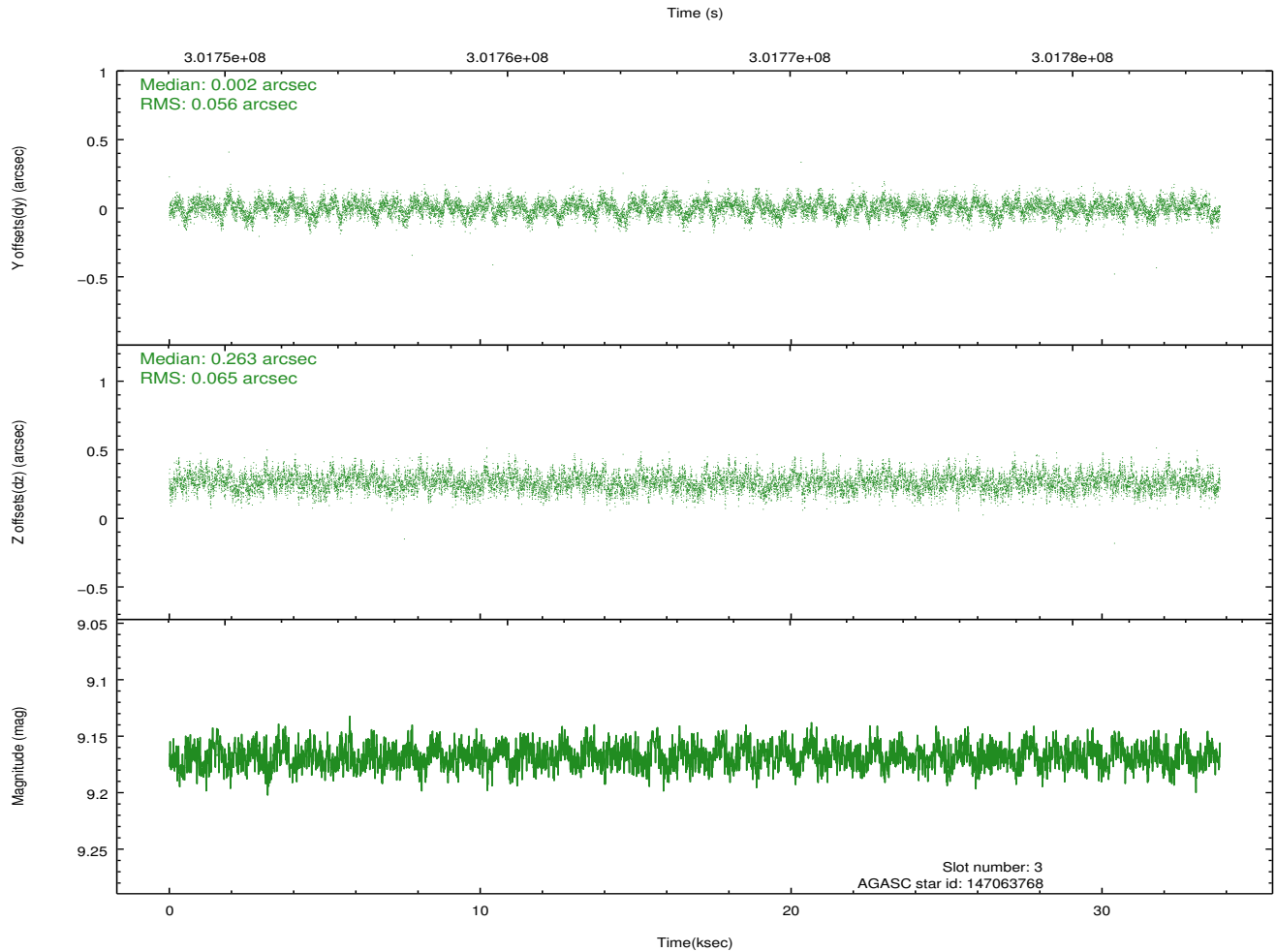
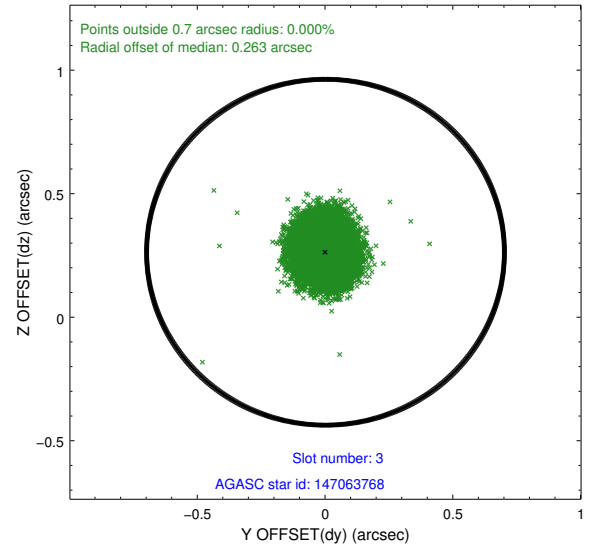
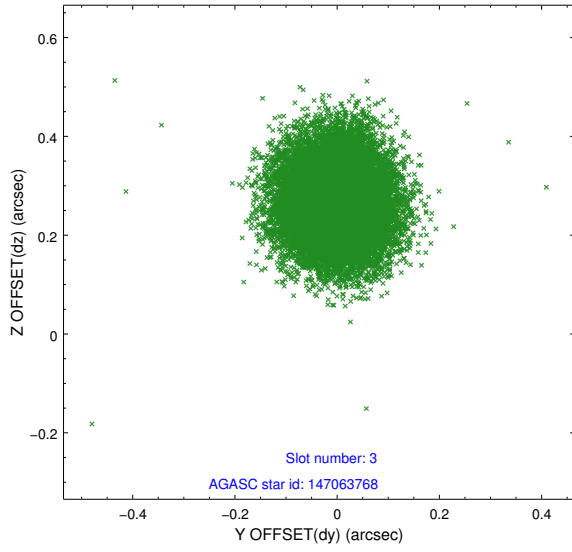


### Slot Statistics

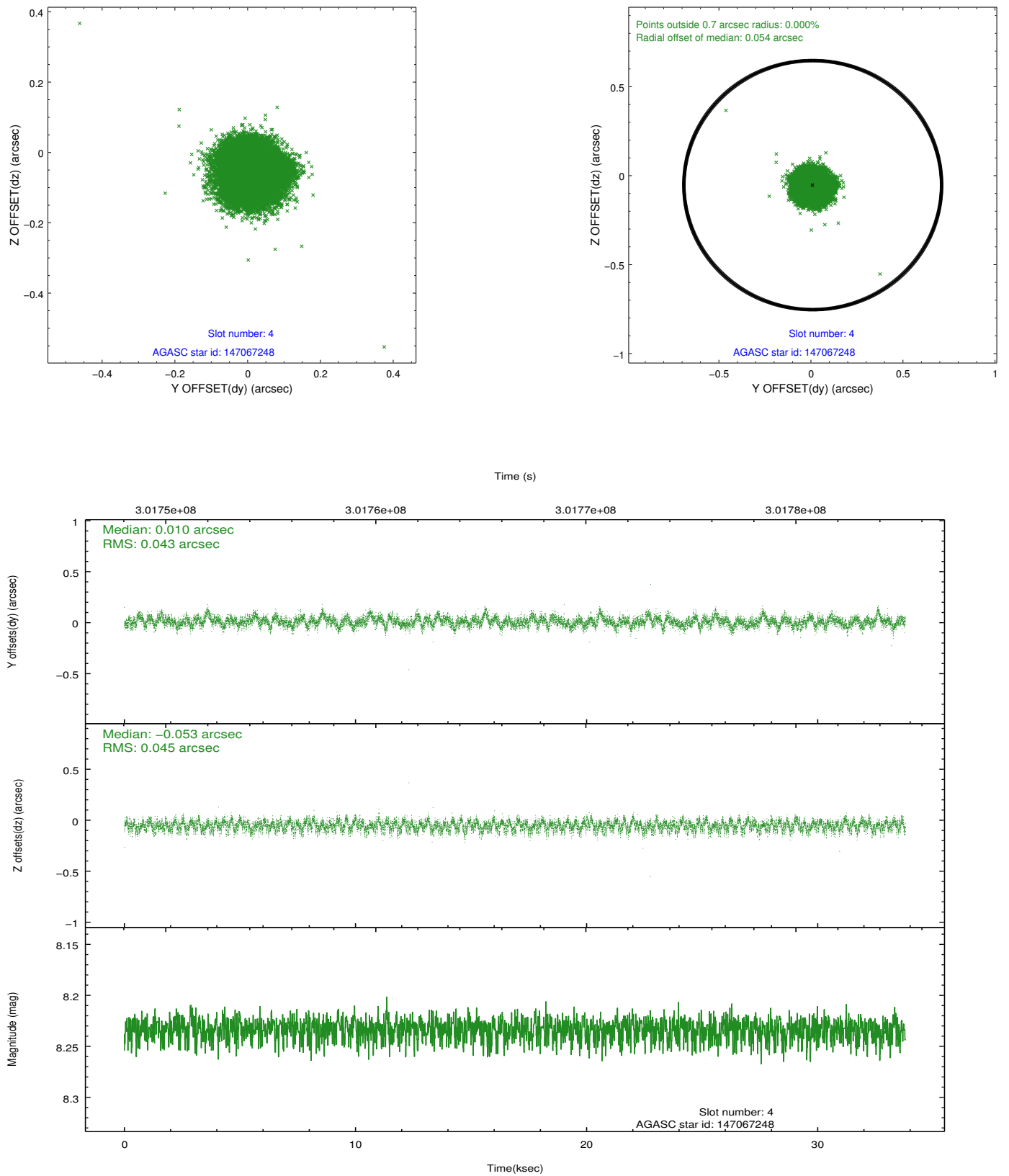
slot	status	id	mag	n_pts	med_dy	med_dz	dr1	dr2	ra	dec	mean_y	mean_z
0	FID	ACIS-S-2	7.10	8243	-0.048	-0.052	0.014	0.025	0.000000	0.000000	-766.05	-1735.81
1	FID	ACIS-S-4	7.19	8242	0.177	0.037	0.007	0.012	0.000000	0.000000	2147.41	172.74
2	FID	ACIS-S-5	7.23	8243	-0.160	0.023	0.014	0.023	0.000000	0.000000	-1818.97	166.40
3	GUIDE	147063768	9.17	16465	0.002	0.263	0.091	0.147	329.066069	8.962636	-67.81	-935.37
4	GUIDE	147067248	8.23	16477	0.010	-0.053	0.067	0.105	329.133498	8.378069	-1611.69	514.33
5	GUIDE	147073608	8.95	16477	-0.026	-0.141	0.069	0.113	328.016794	8.753631	2296.97	2048.44
6	GUIDE	147597840	9.42	16372	-0.086	0.106	0.105	0.167	328.779368	9.442746	1826.73	-1595.88
7	GUIDE	147066144	9.83	16458	0.099	-0.173	0.107	0.176	328.968593	8.002446	-2037.55	1925.75

## 2.4 Star Slots

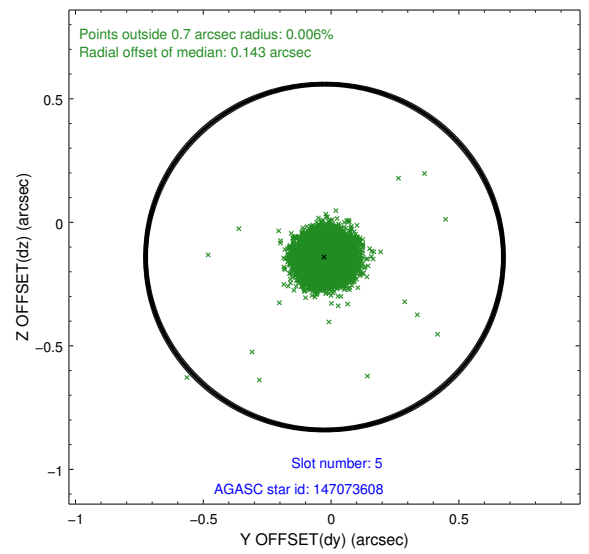
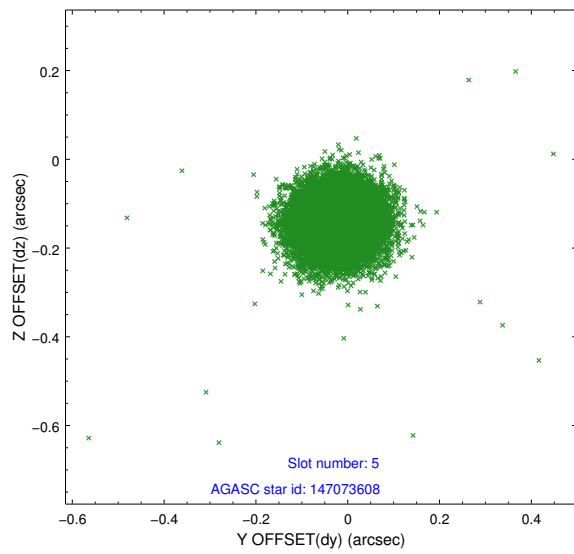
### 2.4.1 Slot 3



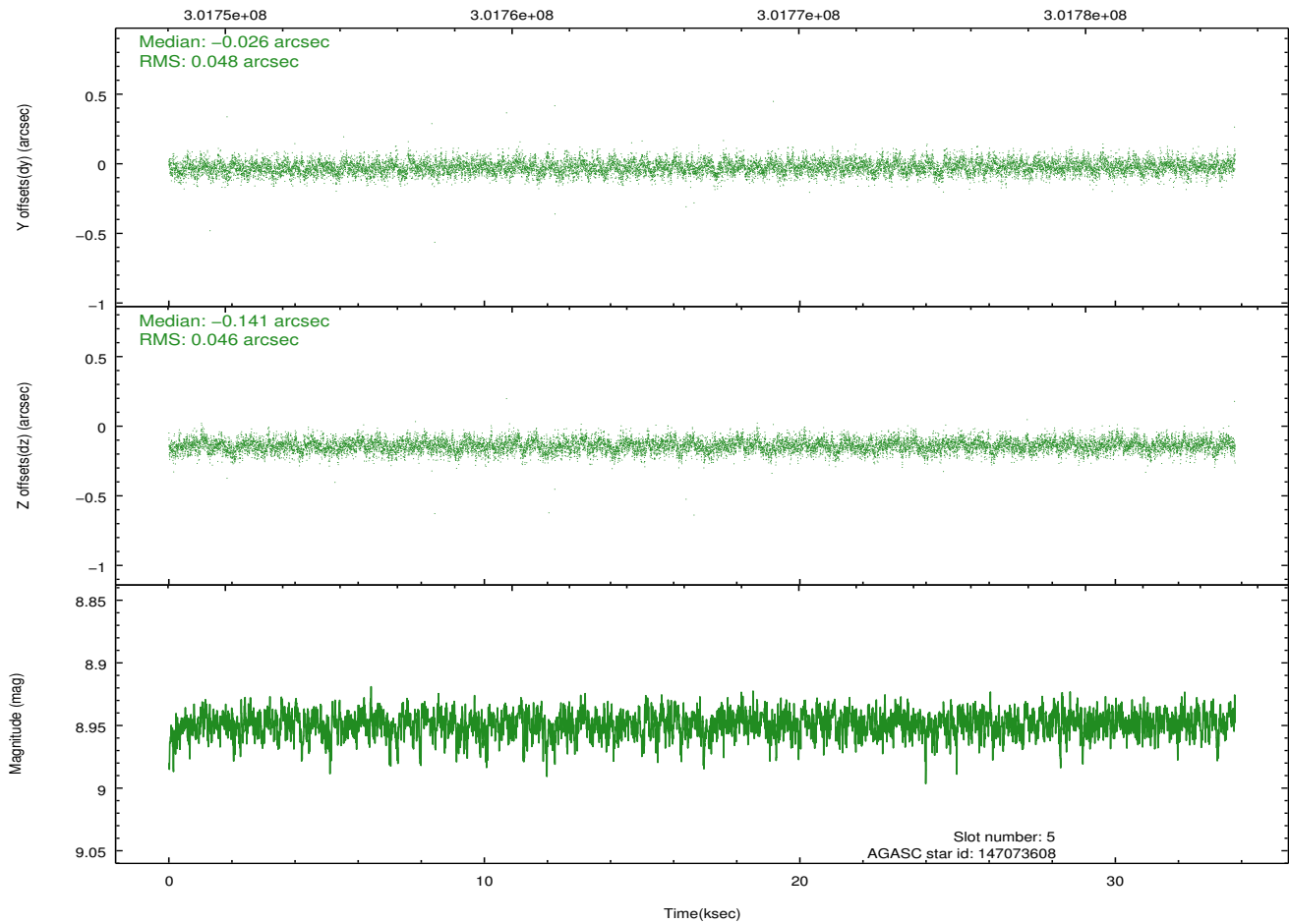
## 2.4.2 Slot 4



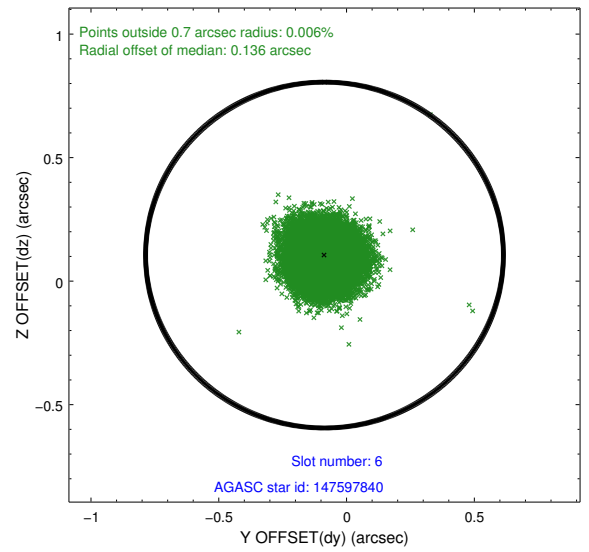
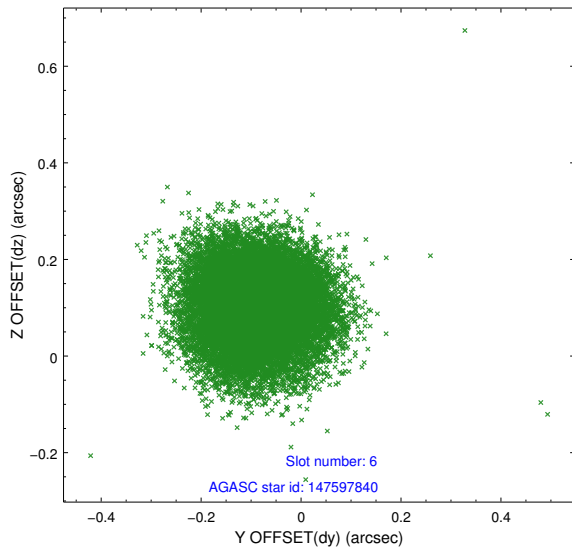
### 2.4.3 Slot 5



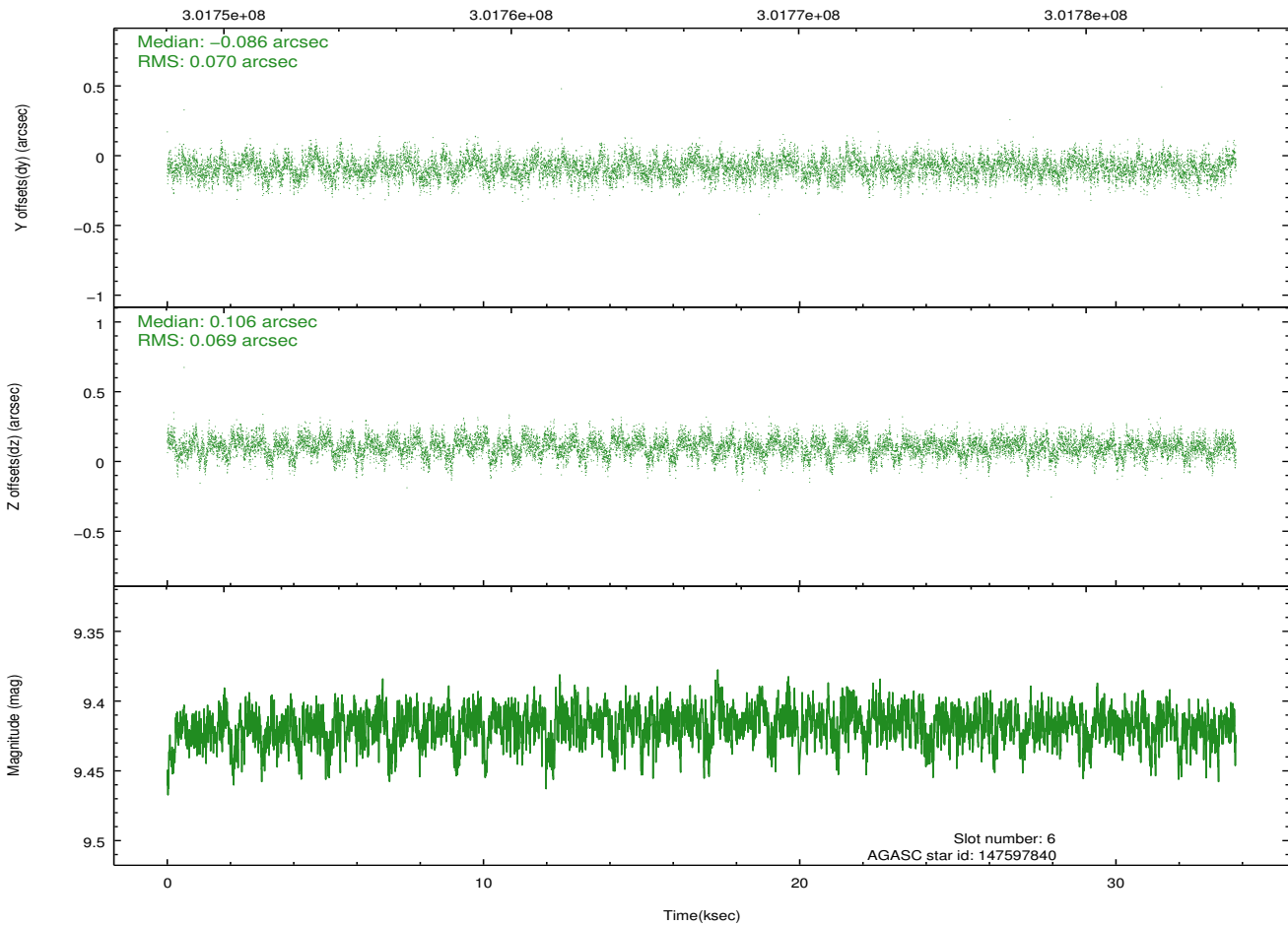
Time (s)



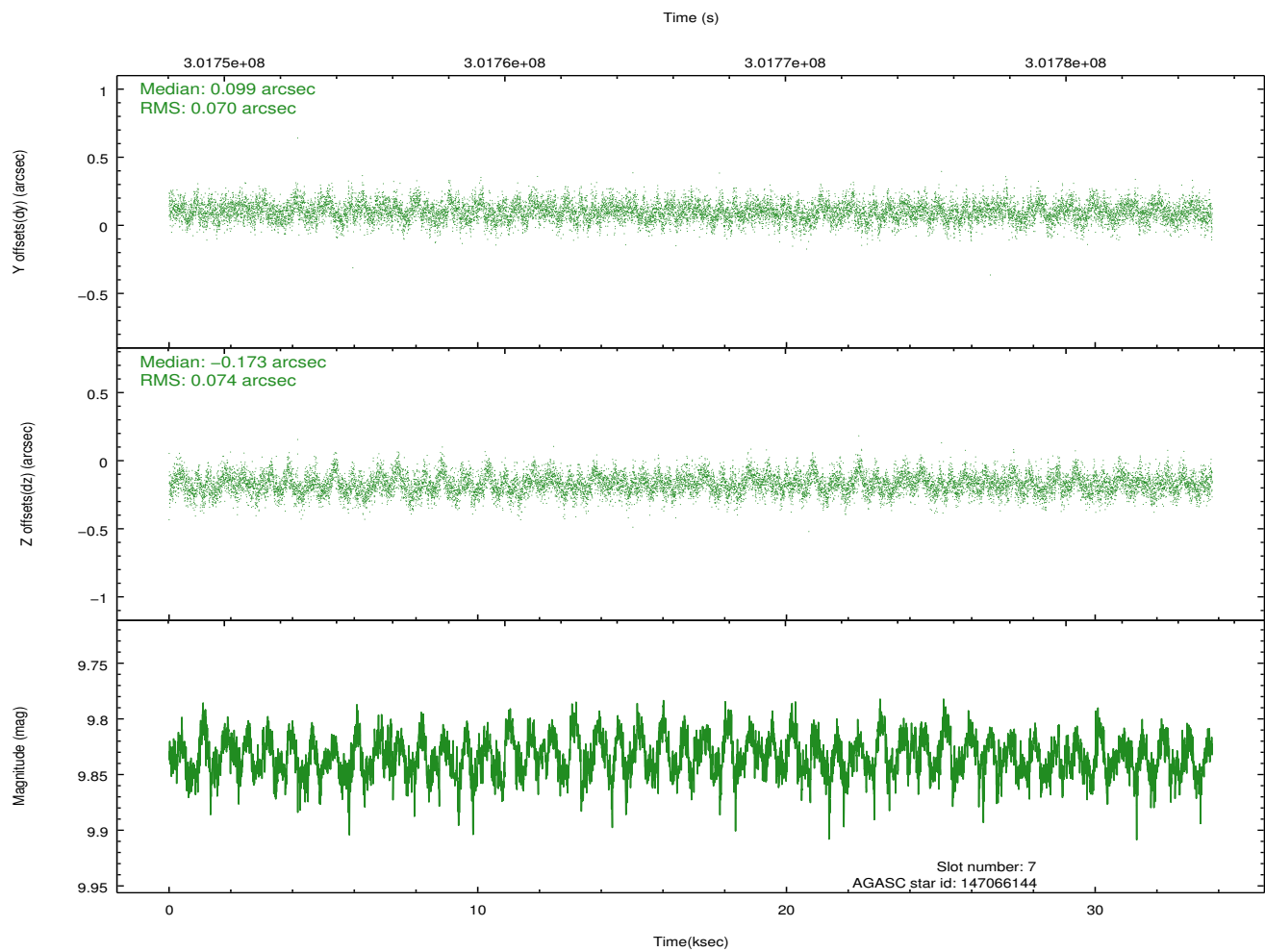
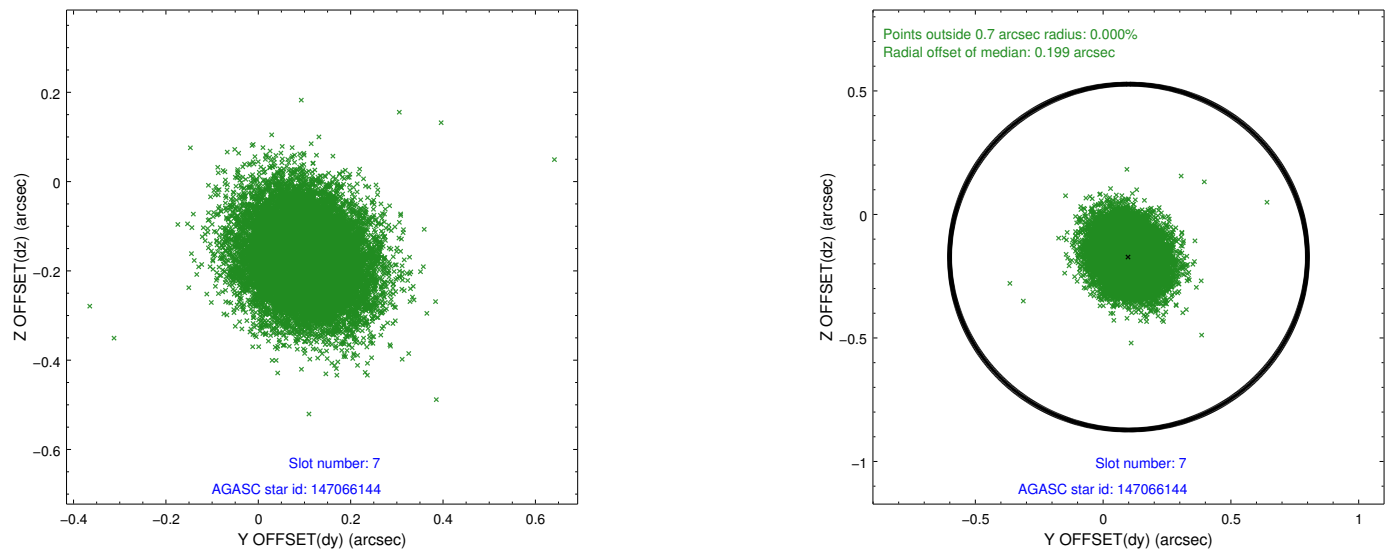
## 2.4.4 Slot 6



Time (s)

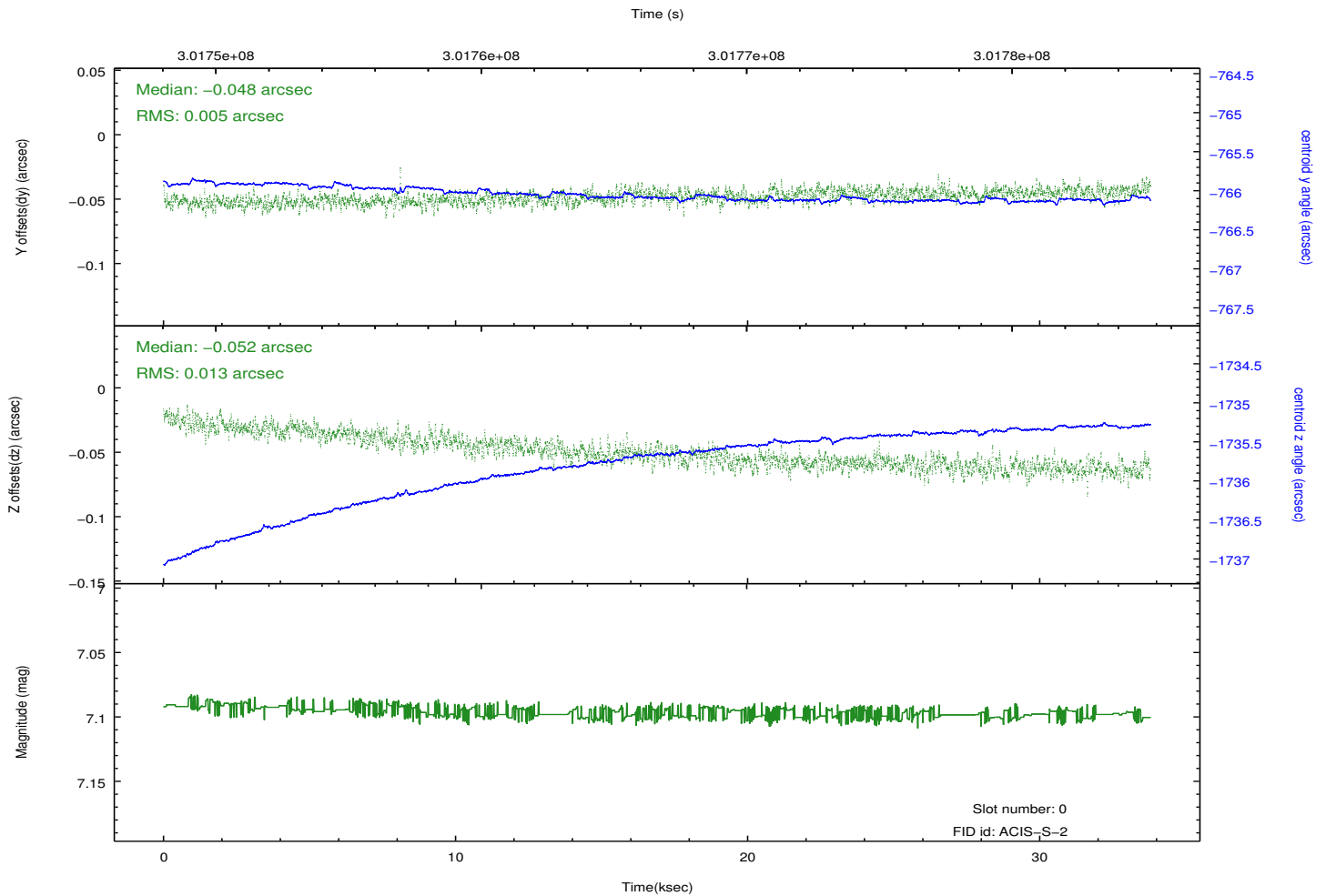
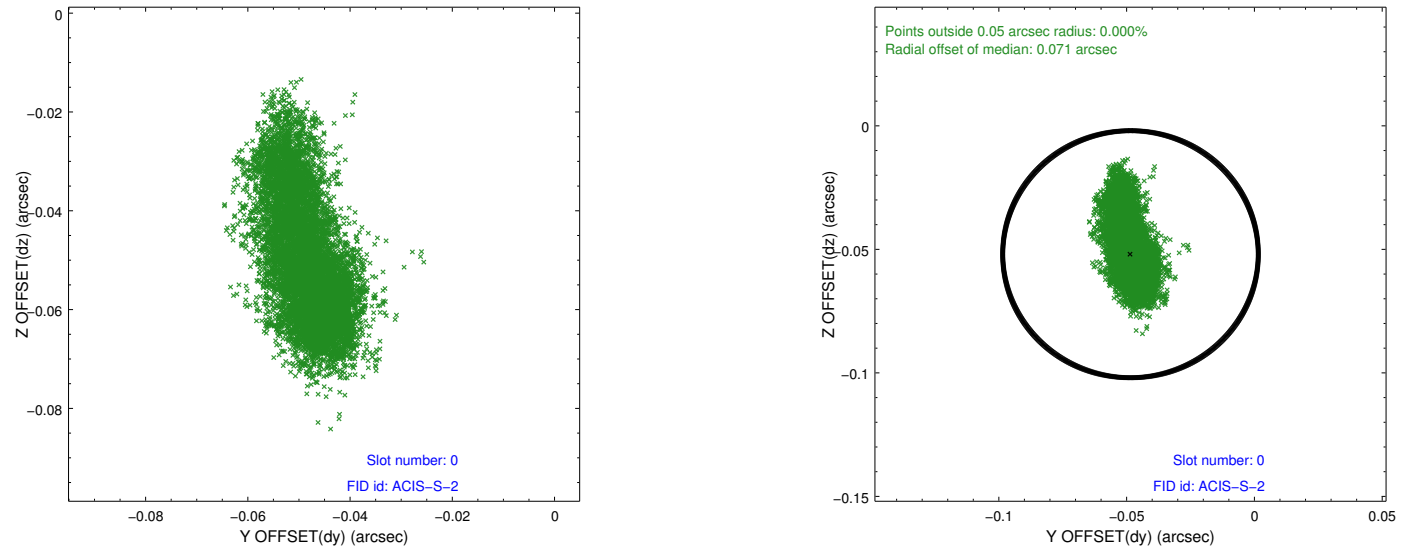


## 2.4.5 Slot 7

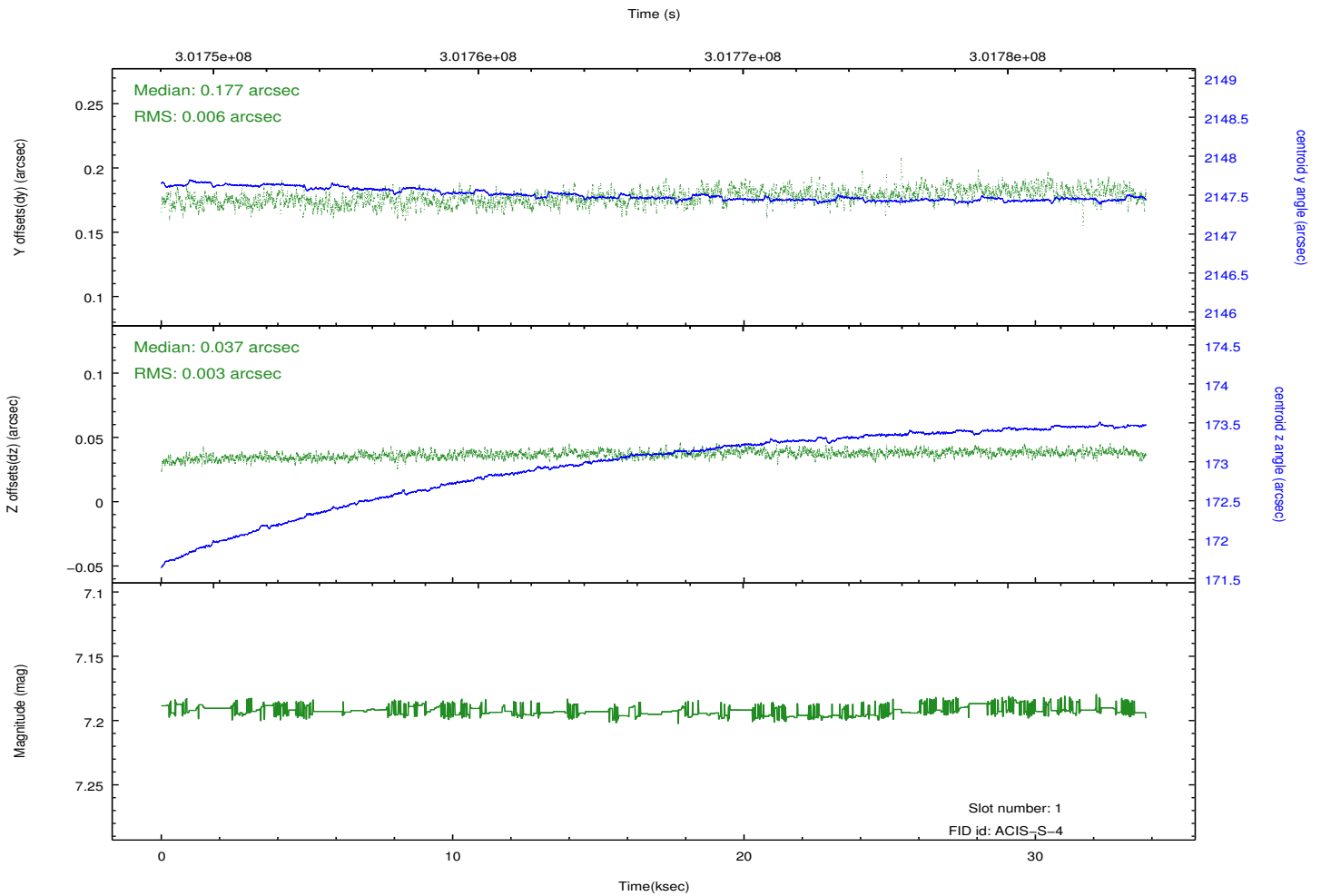
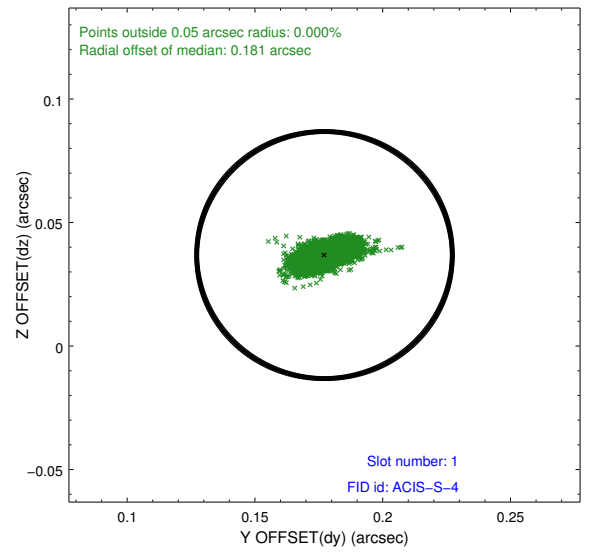
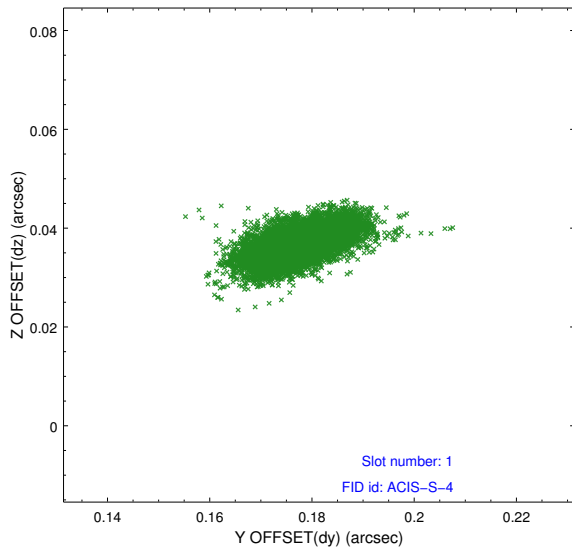


## 2.5 FID Slots

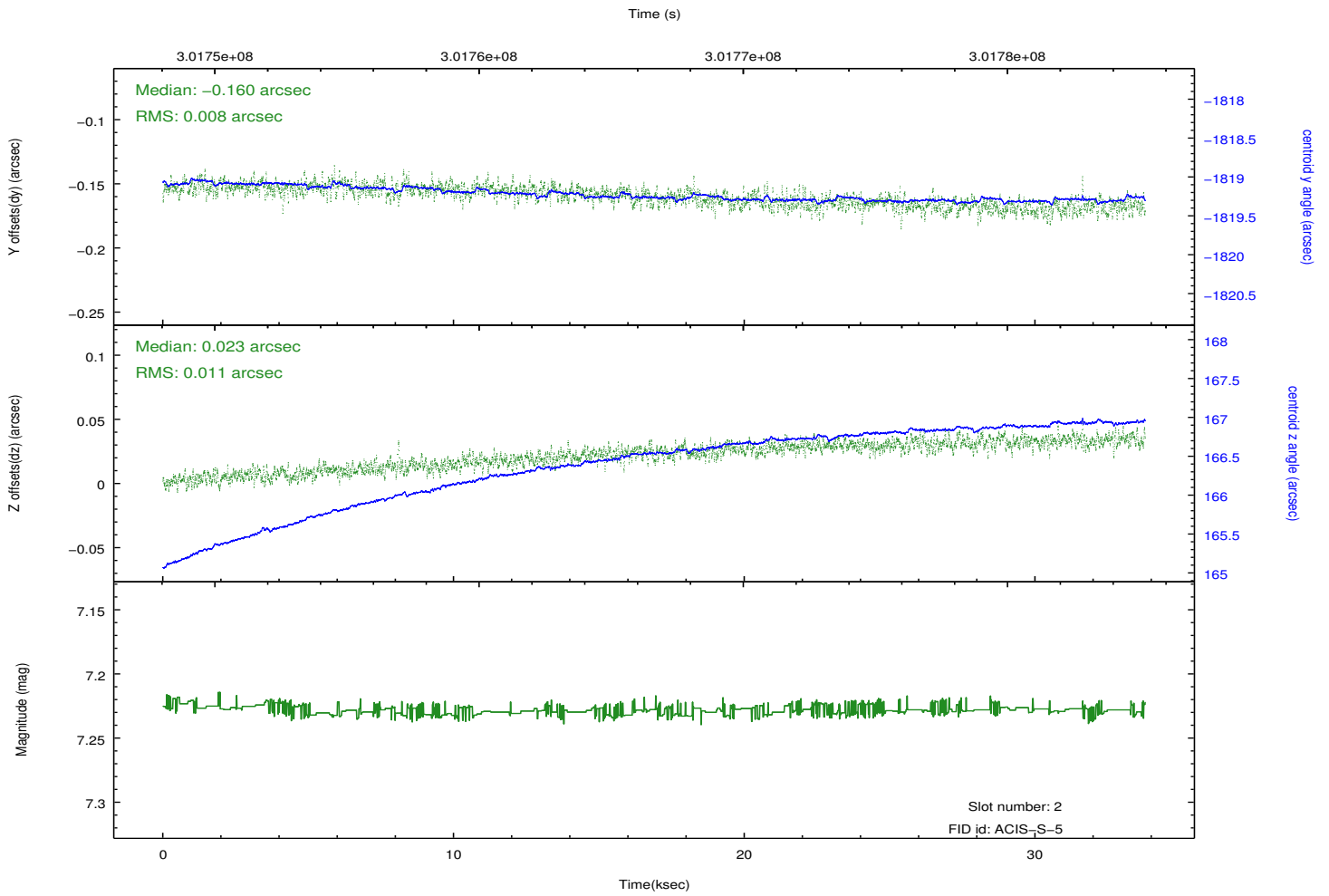
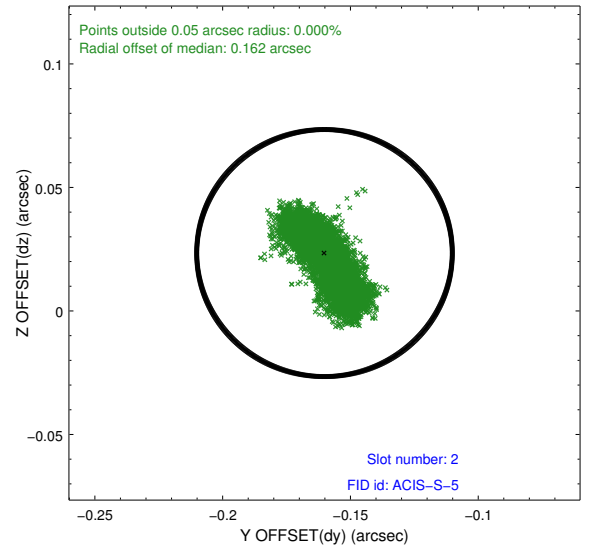
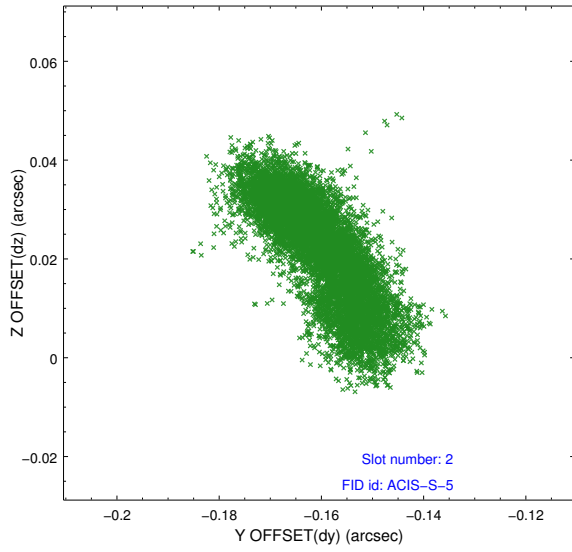
### 2.5.1 Slot 0



## 2.5.2 Slot 1



### 2.5.3 Slot 2



# A Summary

## A.1 Status

V&V Scientist	Jen Lauer
V&V Date (YYYY-MM-DD)	2012.05.01
V&V Edition	1
V&V Disposition and Status	OK
V&V Charge Time	33.7869002

## A.2 Comments