

# V&V Reference Report

## L2 ASCDS Version : 8.4.4

Observation 7927 - L2 Version 2  
Chandra X-Ray Center

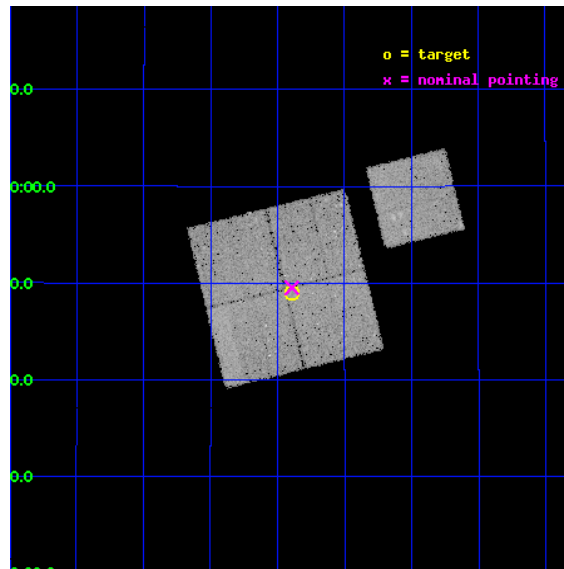
L2 Processing Date : May 1 2012

## Contents

<b>1</b>	<b>Front</b>	<b>2</b>
<b>2</b>	<b>OBI</b>	<b>3</b>
2.1	OBI . . . . .	3
2.1.1	Images . . . . .	3
2.1.2	Bias . . . . .	3
2.1.3	Parameters . . . . .	4
2.1.4	Events . . . . .	4
2.2	Compared Parameters . . . . .	5
2.3	Aspect . . . . .	6
2.4	Star Slots . . . . .	9
2.4.1	Slot 3 . . . . .	9
2.4.2	Slot 4 . . . . .	10
2.4.3	Slot 5 . . . . .	11
2.4.4	Slot 6 . . . . .	12
2.4.5	Slot 7 . . . . .	13
2.5	FID Slots . . . . .	14
2.5.1	Slot 0 . . . . .	14
2.5.2	Slot 1 . . . . .	15
2.5.3	Slot 2 . . . . .	16
<b>A</b>	<b>Summary</b>	<b>17</b>
A.1	Status . . . . .	17
A.2	Comments . . . . .	17

# 1 Front

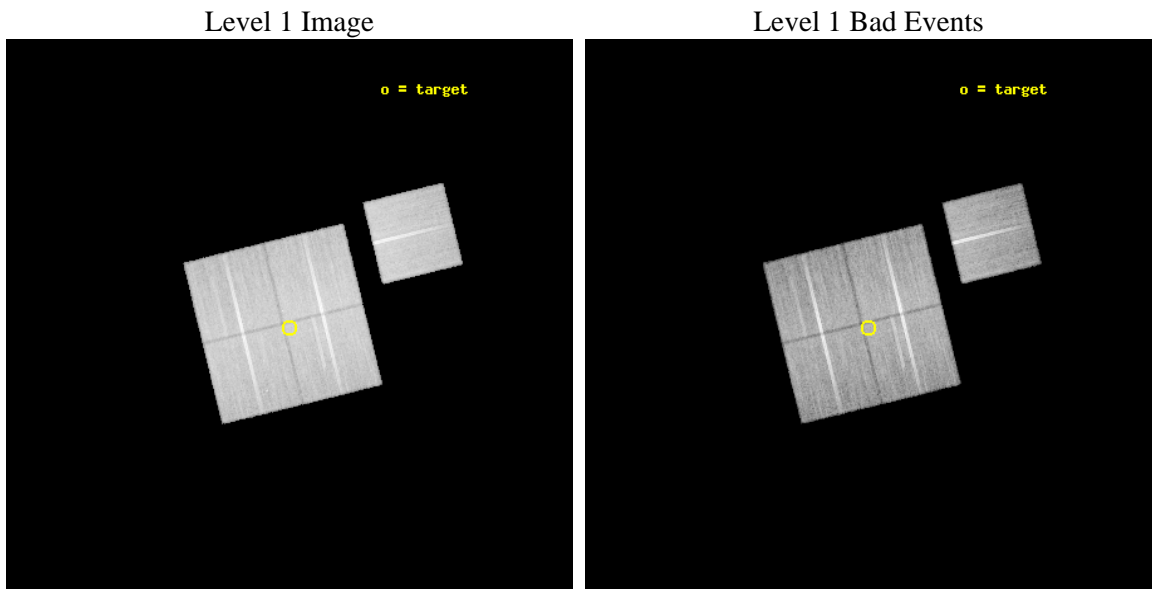
seq_num	800645	Sequence number
obs_id	7927	Observation id
title	A Complete Baryon Census in a Nearby Galaxy Group	Proposal title
observer	Dr. John Mulchaey	Principal investigator
object	NGC2563-P3	Source name
dtcycle	0	&#160
cycle	P	events from which exps? Prim/Second/Both
ra_targ	125.09875	Observer's specified target RA [deg]
dec_targ	20.817111	Observer's specified target Dec [deg]
ra_nom	125.09824031377	Nominal RA [deg]
dec_nom	20.825176405313	Nominal Dec [deg]
roll_nom	76.236798808827	Nominal Roll [deg]
revision	2	Processing version of data
ontime	30119.436360419	Sum of GTIs [s]
livetime	29725.903750763	Livetime [s]
ontime0	30128.859261453	Sum of GTIs [s]
ontime1	30125.718281031	Sum of GTIs [s]
ontime2	30125.718251228	Sum of GTIs [s]
ontime3	30119.436360419	Sum of GTIs [s]
ontime6	30132.000231743	Sum of GTIs [s]
l2events	103548	Number of level 2 events



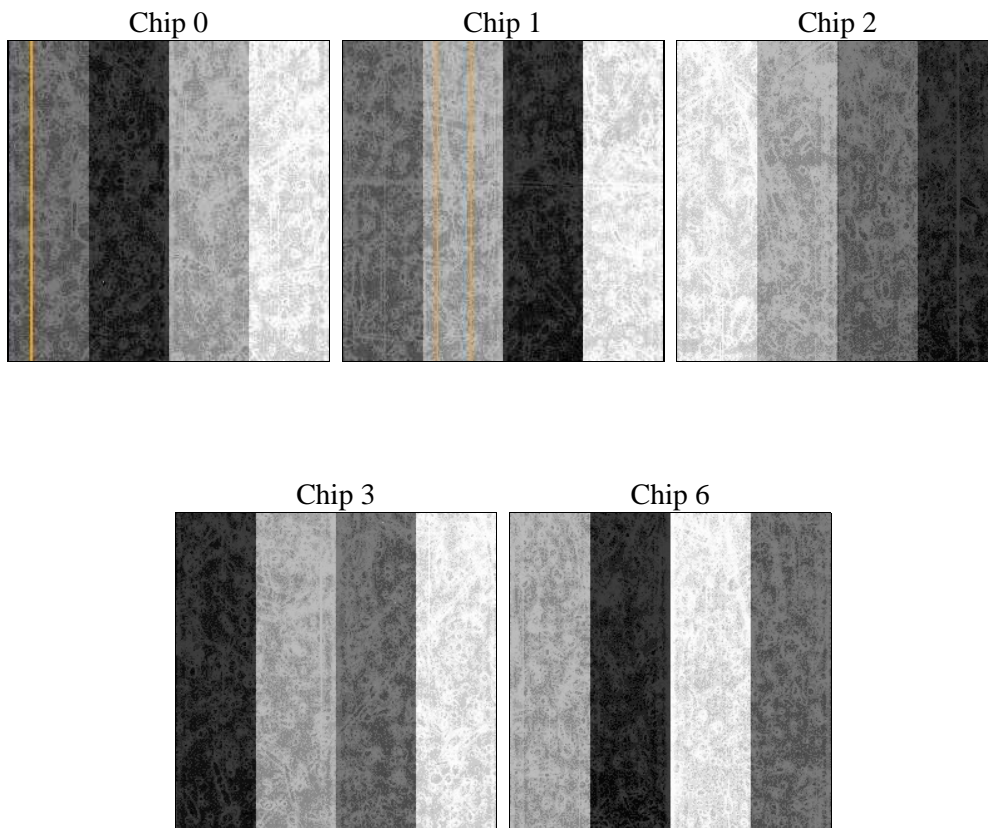
## 2 OBI

### 2.1 OBI

#### 2.1.1 Images



#### 2.1.2 Bias



### 2.1.3 Parameters

obi_num	2	Obi number	sched_exp_time	30000.000000	[s] Scheduled observation exposure time
ascdsver	8.4.4	Processing system revision	ontime	30119.436360419	Sum of GTIs [s]
caldbver	4.4.9	&#160	ontime0	30128.859261453	Sum of GTIs [s]
date	2012-05-01T22:34:55	Date and time of file creation	ontime1	30125.718281031	Sum of GTIs [s]
revision	2	Processing version of data	ontime2	30125.718251228	Sum of GTIs [s]
			ontime3	30119.436360419	Sum of GTIs [s]
			ontime6	30132.000231743	Sum of GTIs [s]
			l1events	1259884	Number of level 1 events

### 2.1.4 Events

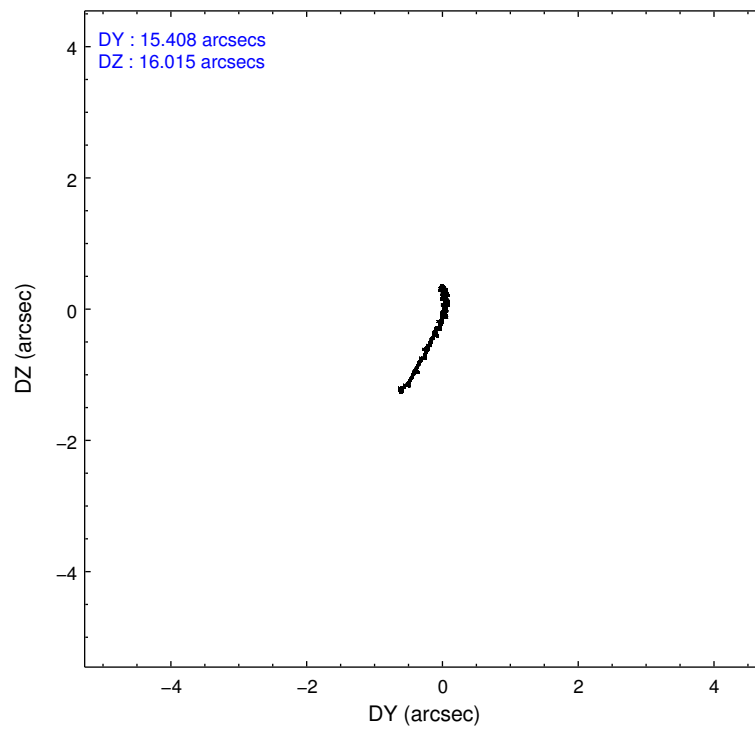
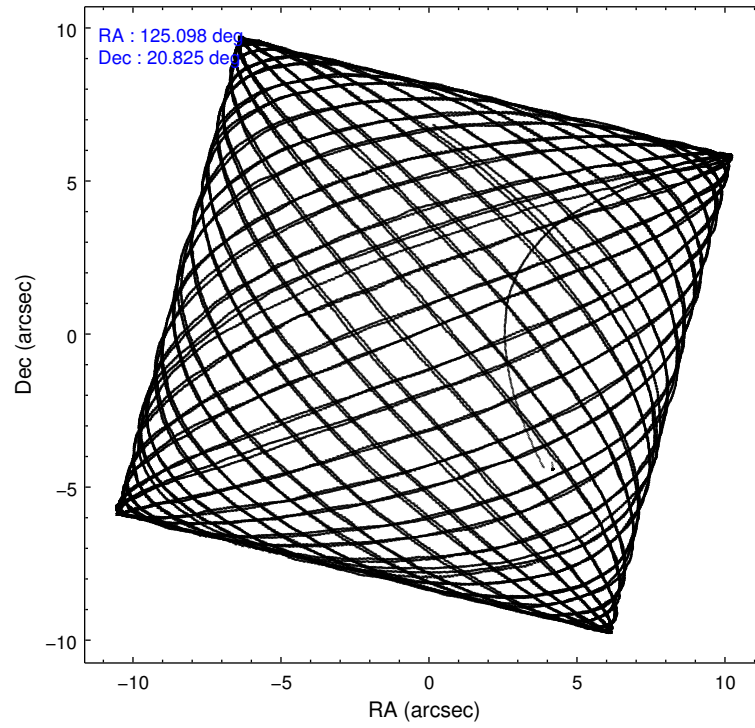
	ccd 0	ccd 1	ccd 2	ccd 3	ccd 6
level 1 events	240844	236730	272300	256121	253889
rejected events	216453	209145	247791	233277	228360
rejected %	89%	88%	90%	91%	89%

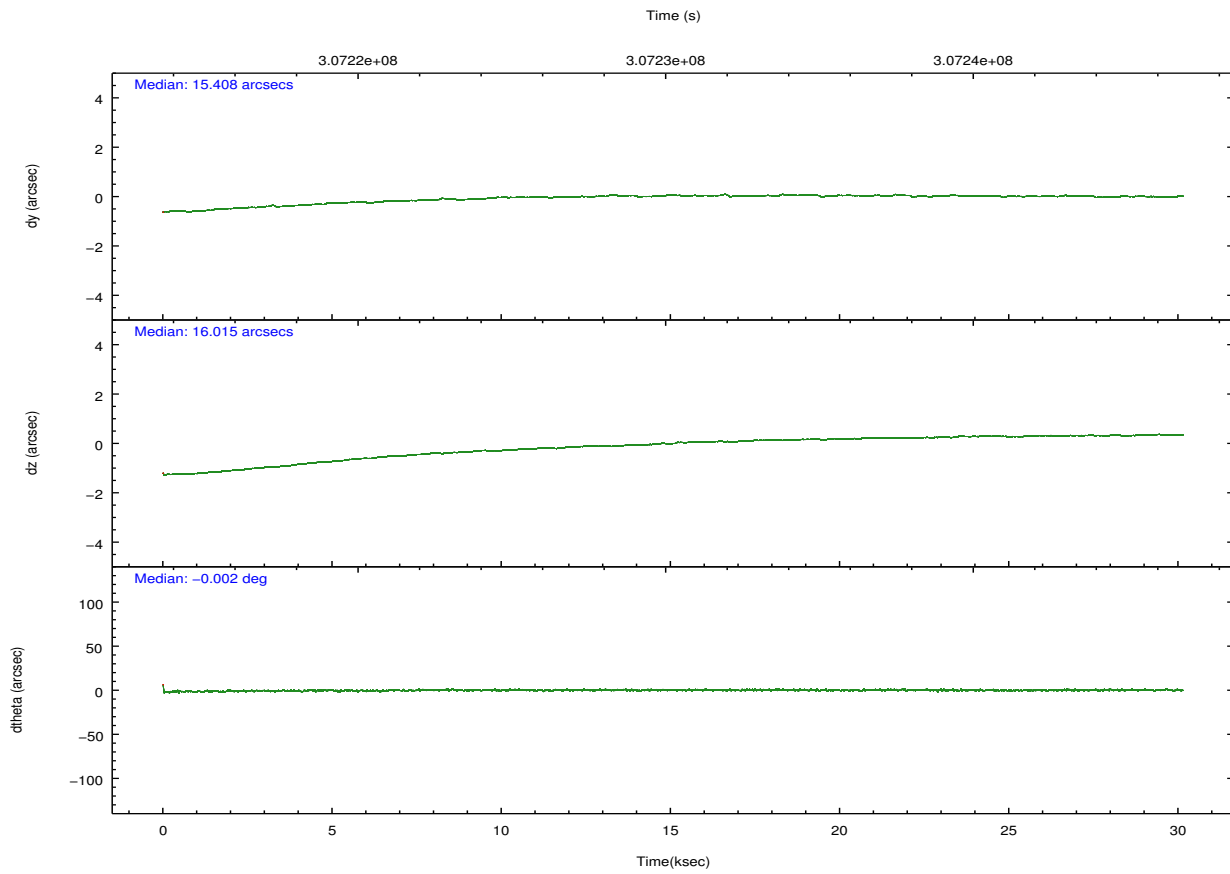
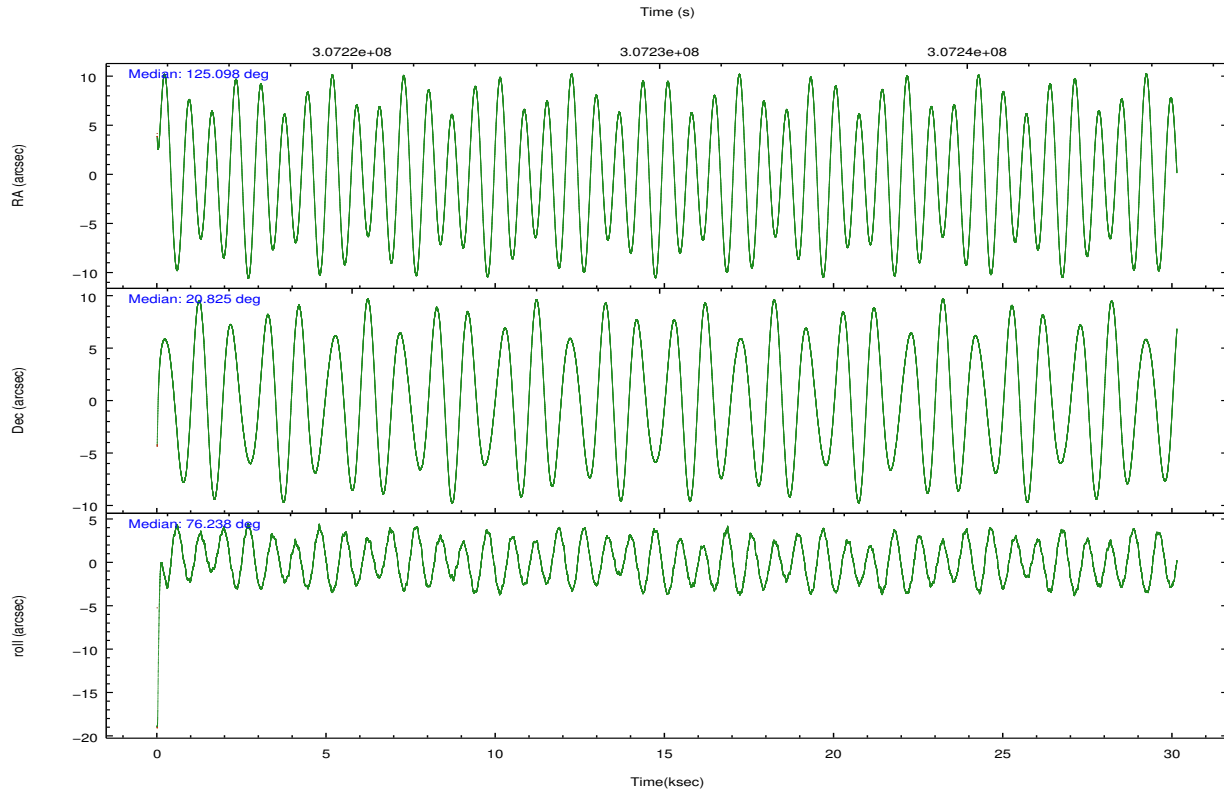
	ccd 0	ccd 1	ccd 2	ccd 3	ccd 6
grade 0 events	8898	10369	9748	8352	9634
	3%	4%	3%	3%	3%
grade 1 events	147	145	135	167	130
	0%	0%	0%	0%	0%
grade 2 events	6178	6459	5947	5162	5959
	2%	2%	2%	2%	2%
grade 3 events	2829	3023	2654	2696	2765
	1%	1%	0%	1%	1%
grade 4 events	2702	3133	2690	2653	2715
	1%	1%	0%	1%	1%
grade 5 events	8759	9689	8161	10309	10064
	3%	4%	2%	4%	3%
grade 6 events	4792	5759	4413	4856	5475
	1%	2%	1%	1%	2%
grade 7 events	206539	198153	238552	221926	217147
	85%	83%	87%	86%	85%

## 2.2 Compared Parameters

Parameter	Planned	Actual	Parameter	Planned	Actual
Instrument	ACIS	ACIS	Obspar format version number	7	7
Detector	ACIS-01236	ACIS-01236	Obspar file type	PREDICTED	ACTUAL
Grating	NONE	NONE	Obspar update status	NONE	UPDATED
Data mode	VFAINT	VFAINT	CCD I0 on	Y	Y
Observation mode	POINTING	POINTING	CCD I1 on	Y	Y
[deg] Pointing RA	125.106557	125.0982403137733	CCD I2 on	Y	Y
[deg] Pointing Dec	20.798804	20.82517640531331	CCD I3 on	Y	Y
[deg] Pointing Roll	76.025165	76.23679880882656	CCD S0 on	N	N
[mm] SIM focus pos	-0.782348	-0.7809083437167272	CCD S1 on	N	N
[mm] SIM defocus	0	0.001439871863259334	CCD S2 on	O1	Y
[mm] SIM translation stage pos	-233.592463	-233.5874344608287	CCD S3 on	N	N
[mm] SIM translation stage offset	0	-0.005018542100998502	CCD S4 on	N	N
[s] Observation start time (MET)	307215317.184000	307213734.17622	CCD S5 on	N	N
Observation start date	2007-09-26T17:34:12	2007-09-26T17:08:54	Number of optional ACIS chips dropped	0	0
[s] Observation end time (MET)	307245317.184000	307246391.19029	On-chip summing requested	N	N
Observation end date	2007-09-27T01:54:12	2007-09-27T02:13:11	Subarray requested	NONE	NONE
Read mode	TIMED	TIMED	Alternating exposures requested	N	N
			[s] Primary exposure time	0.000000	3.1

## 2.3 Aspect



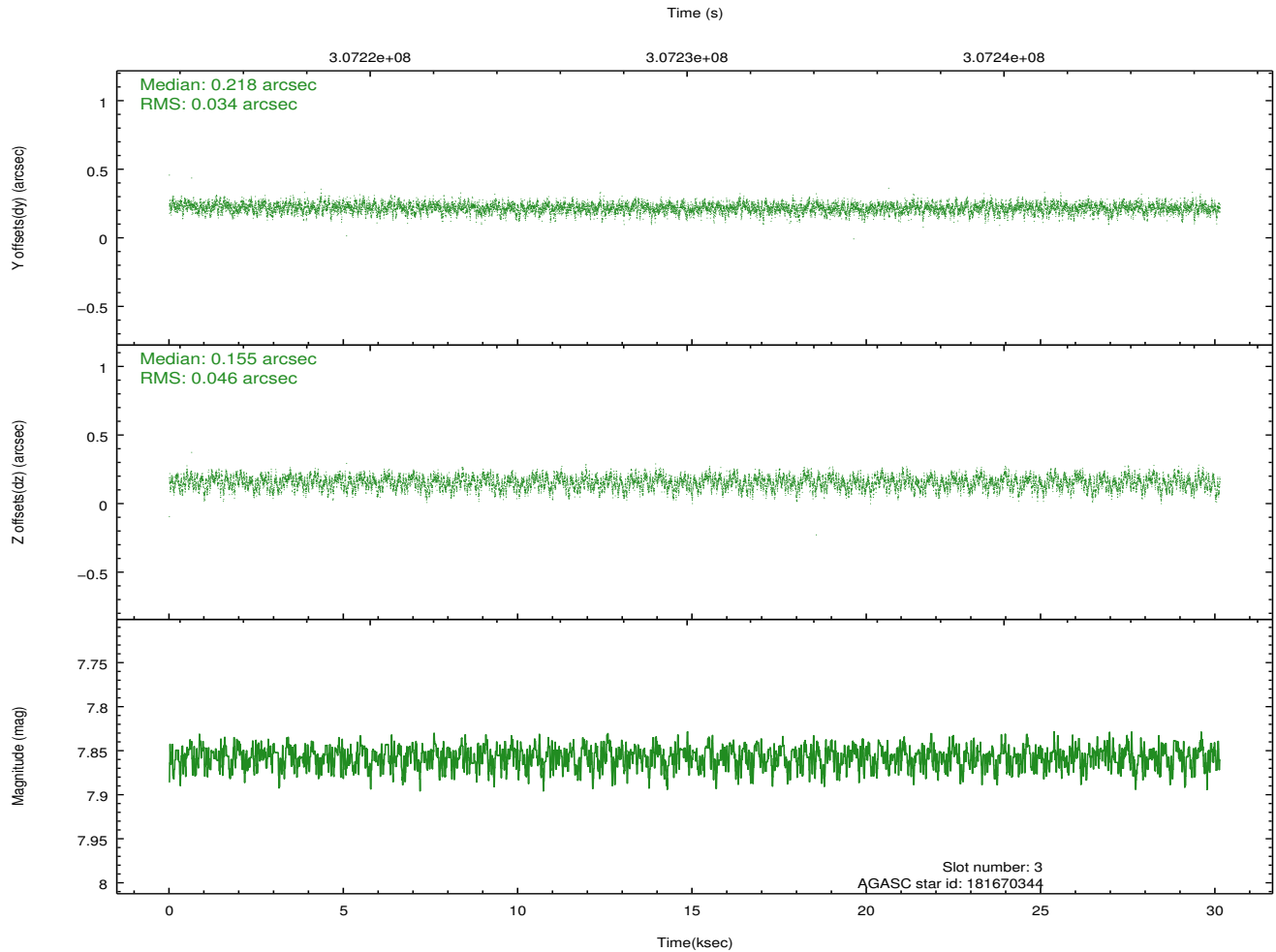
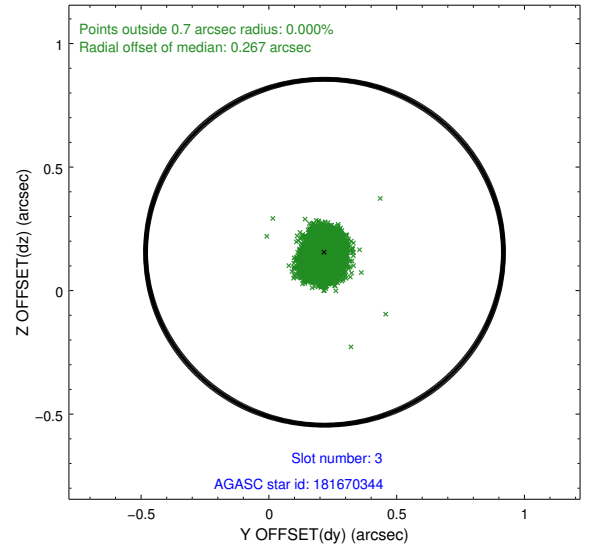
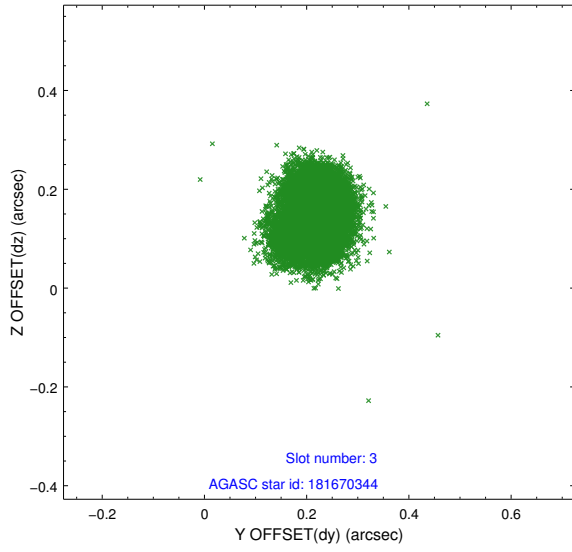


### Slot Statistics

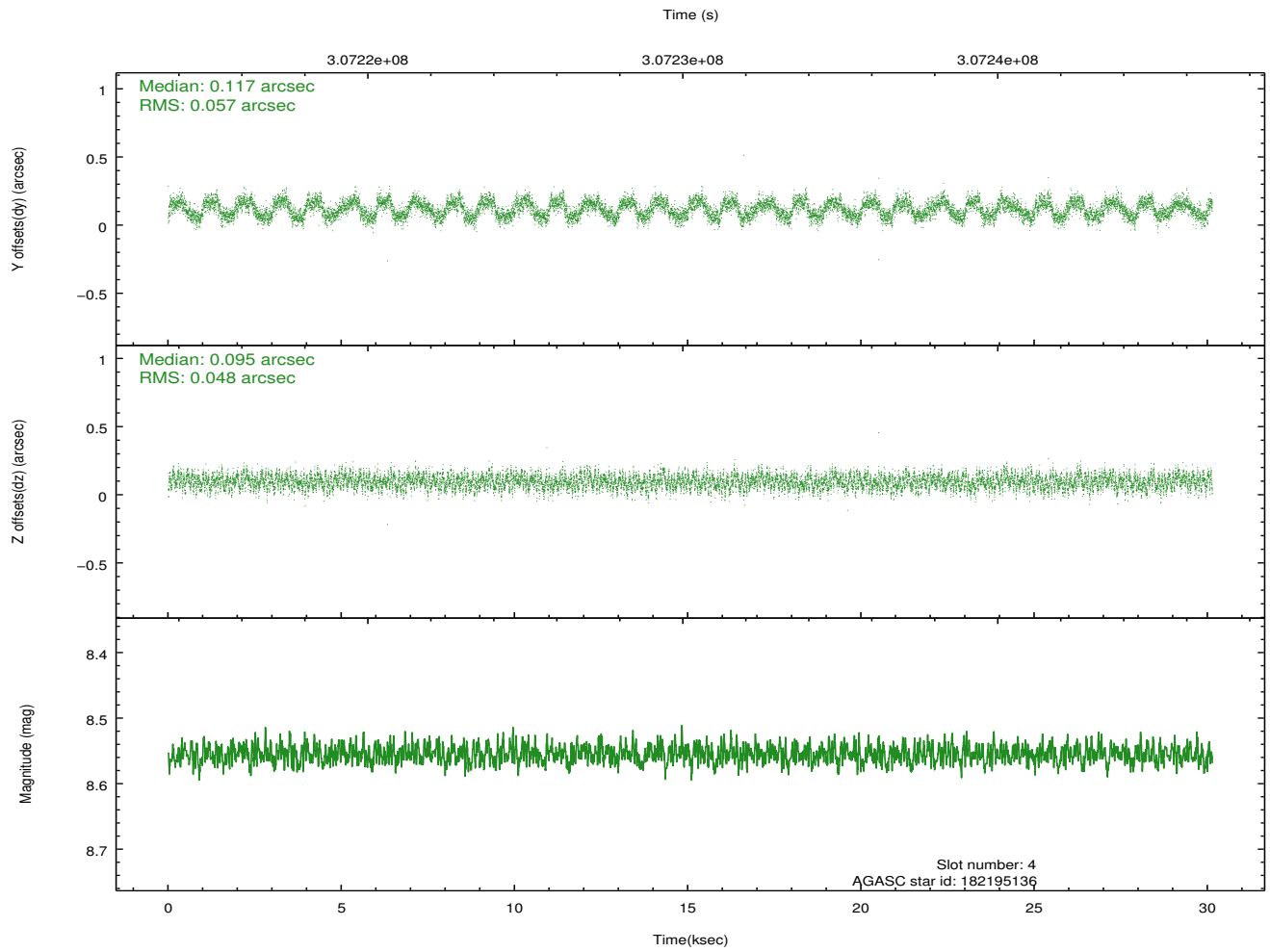
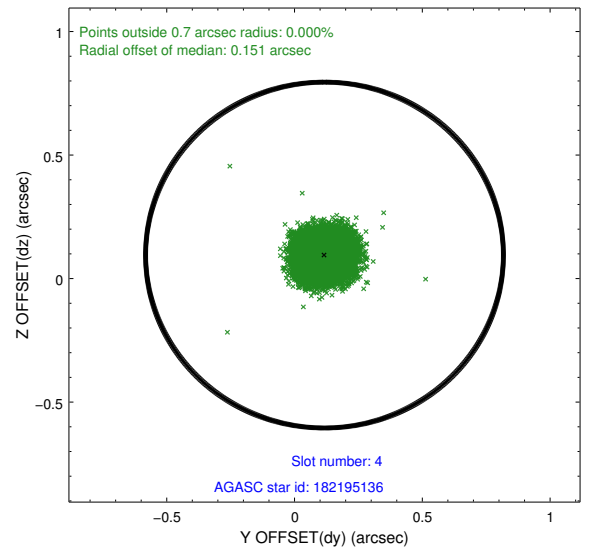
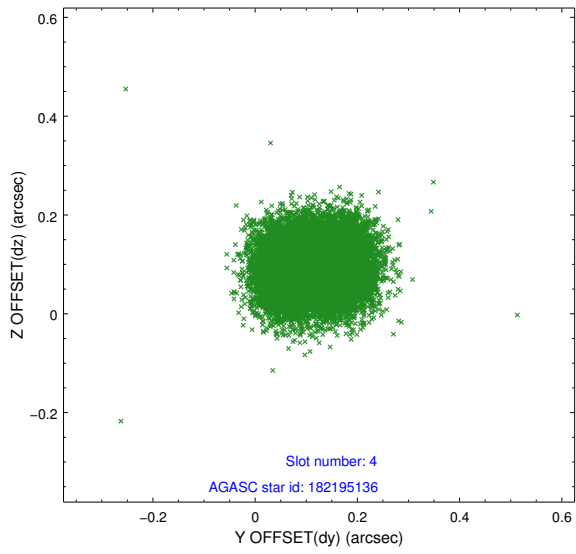
slot	status	id	mag	n_pts	med_dy	med_dz	dr1	dr2	ra	dec	mean_y	mean_z
0	FID	ACIS-I-1	7.23	7351	0.004	-0.058	0.024	0.074	0.000000	0.000000	924.13	-839.53
1	FID	ACIS-I-4	7.16	7348	0.126	0.061	0.018	0.050	0.000000	0.000000	2144.35	1060.33
2	FID	ACIS-I-5	7.22	7351	-0.229	0.067	0.011	0.026	0.000000	0.000000	-1823.99	1058.31
3	GUIDE	181670344	7.86	14701	0.218	0.155	0.060	0.098	124.942618	20.336943	-1746.68	135.81
4	GUIDE	182195136	8.56	14693	0.117	0.095	0.081	0.122	124.931899	20.918080	275.07	673.83
5	GUIDE	182201632	7.63	14699	-0.182	-0.022	0.057	0.098	124.727284	21.494130	2123.46	1837.82
6	GUIDE	182193072	8.14	14699	-0.041	-0.241	0.086	0.132	124.468170	21.177590	809.96	2409.81
7	GUIDE	182202936	7.80	14700	-0.111	0.013	0.057	0.087	124.849962	21.257255	1394.09	1234.14

## 2.4 Star Slots

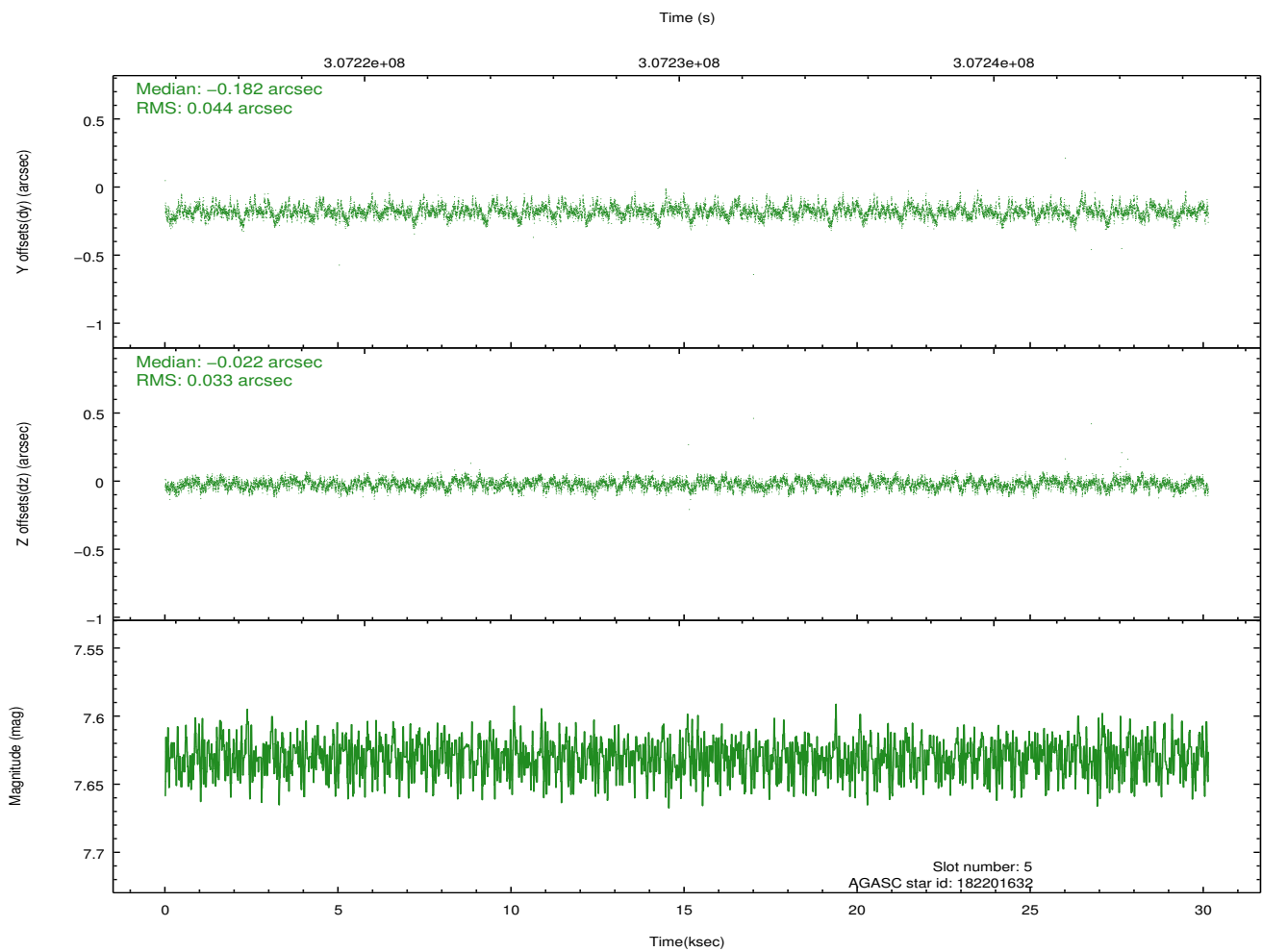
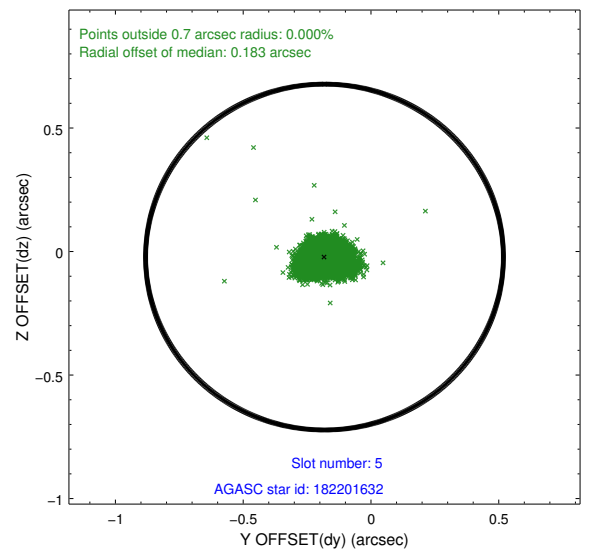
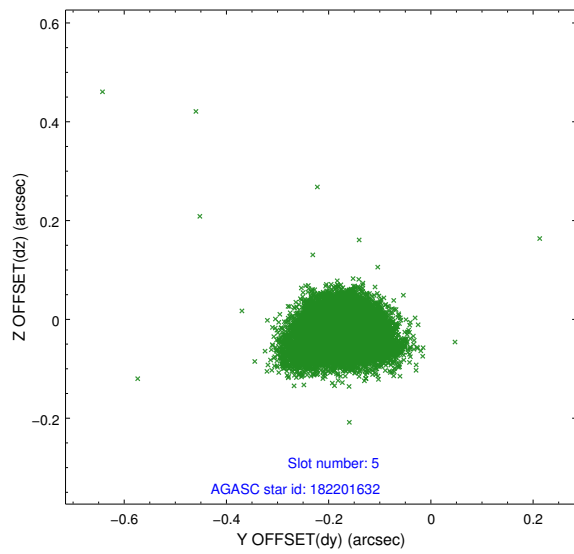
### 2.4.1 Slot 3



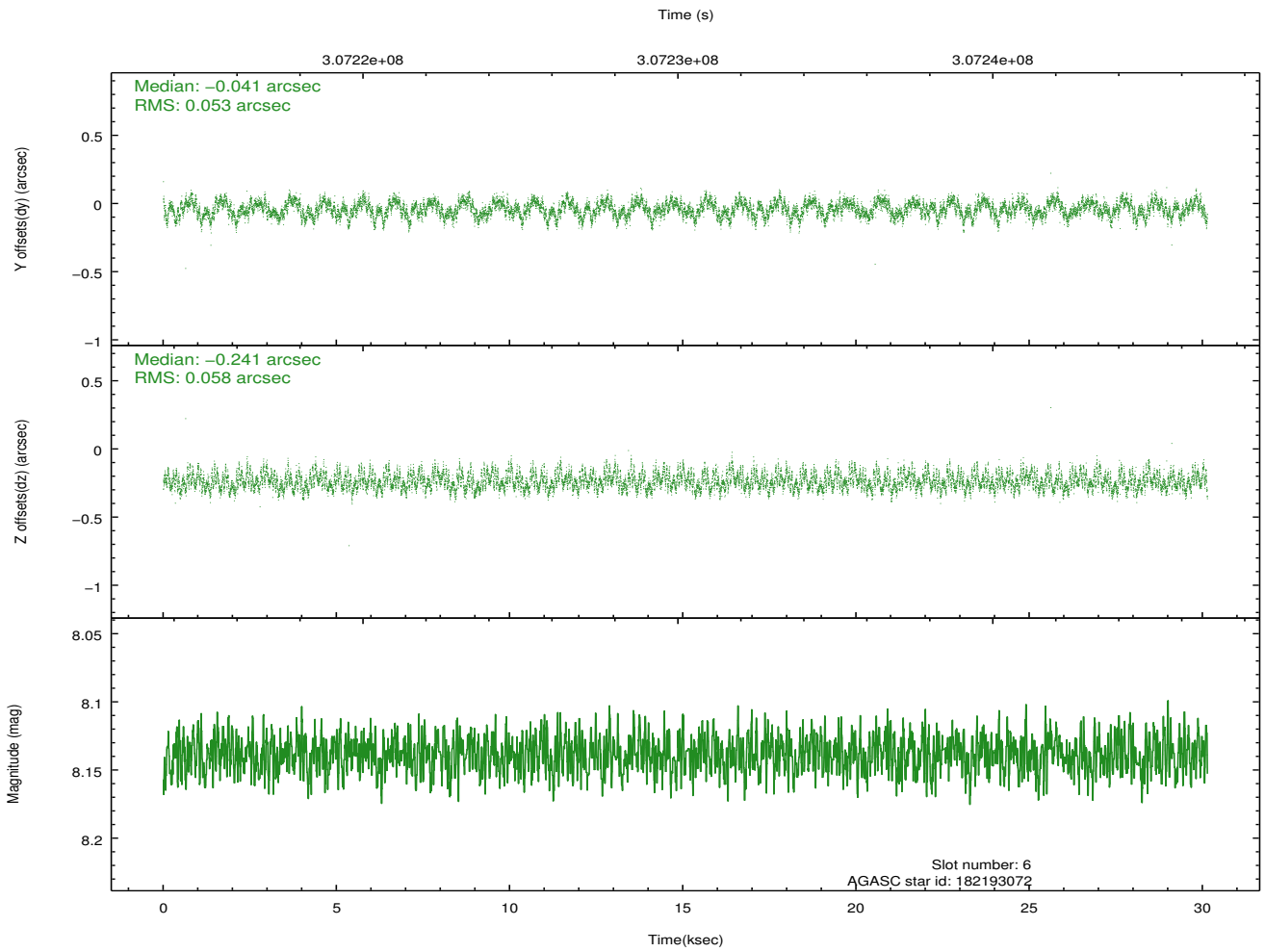
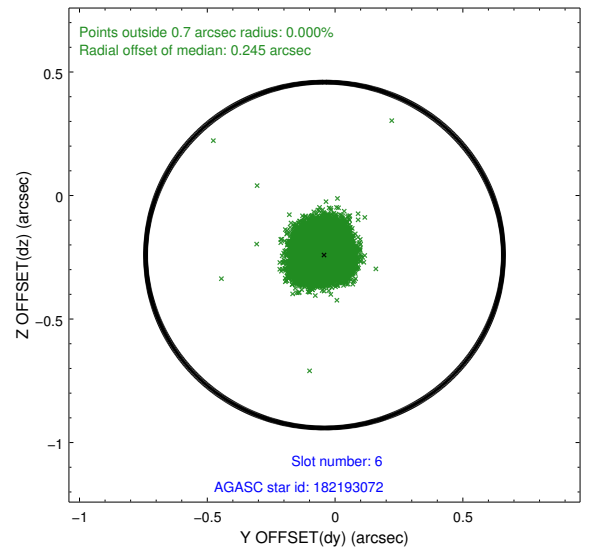
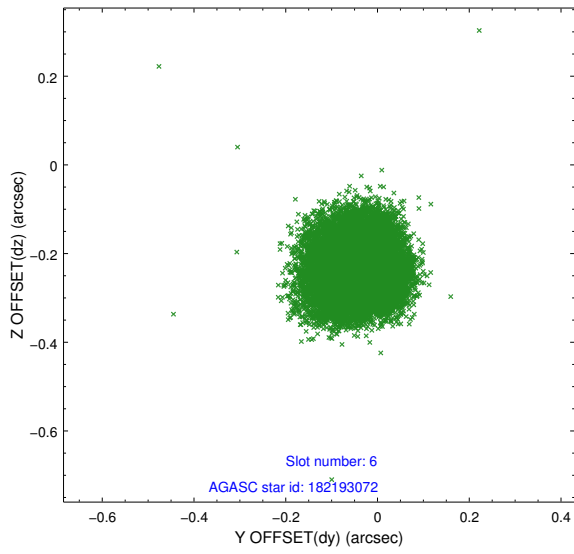
### 2.4.2 Slot 4



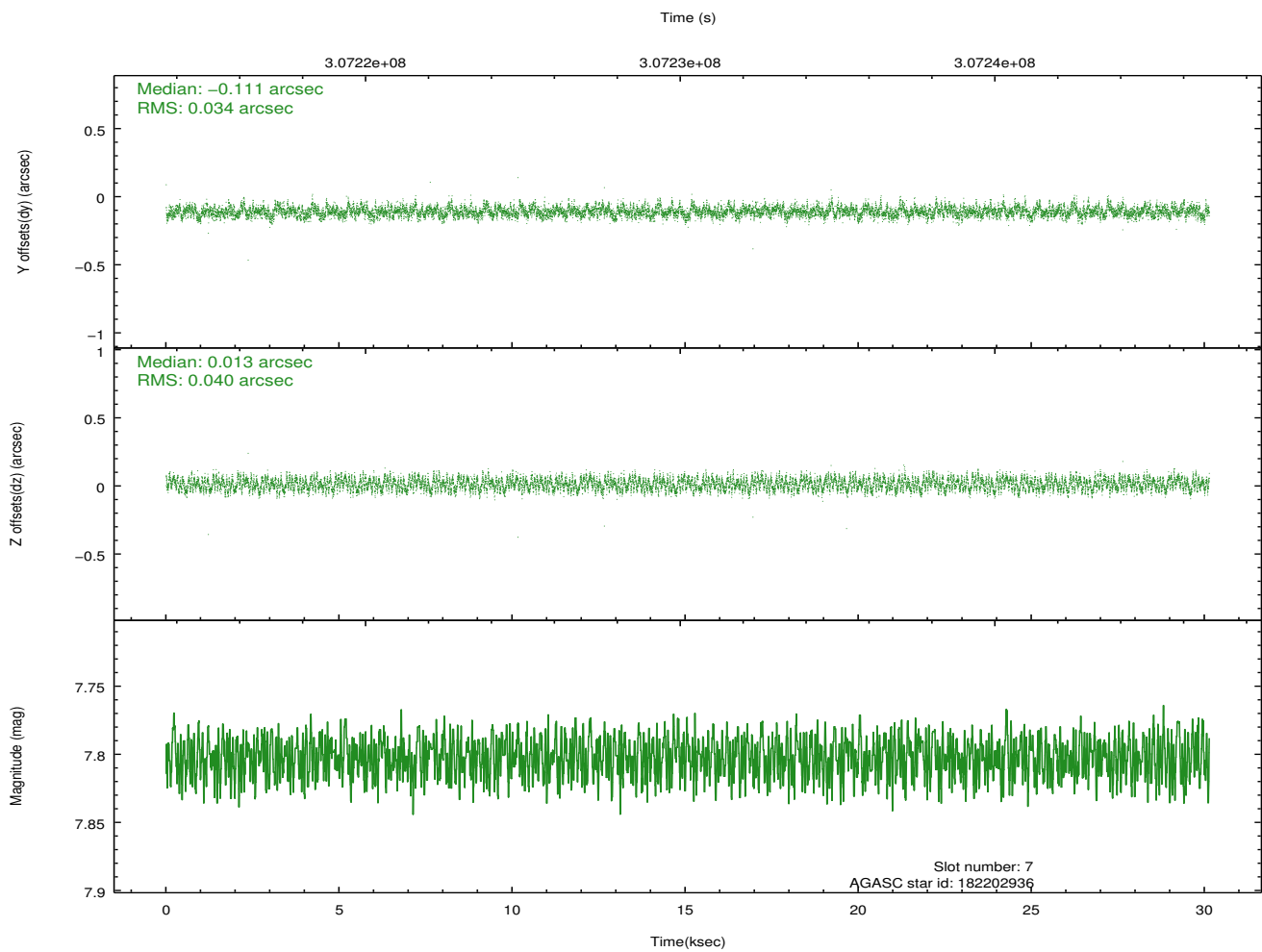
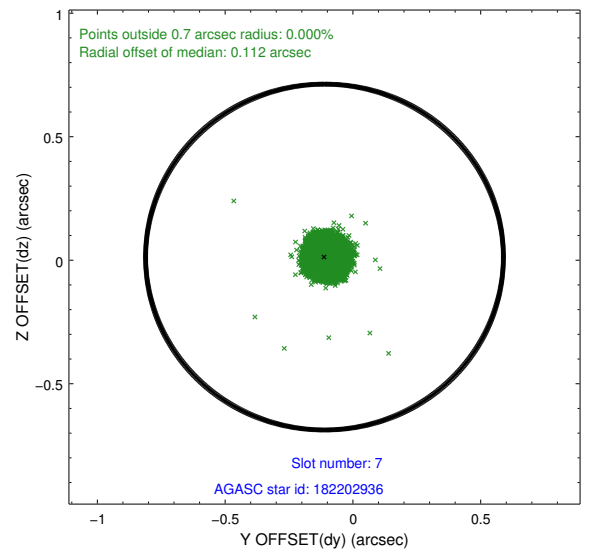
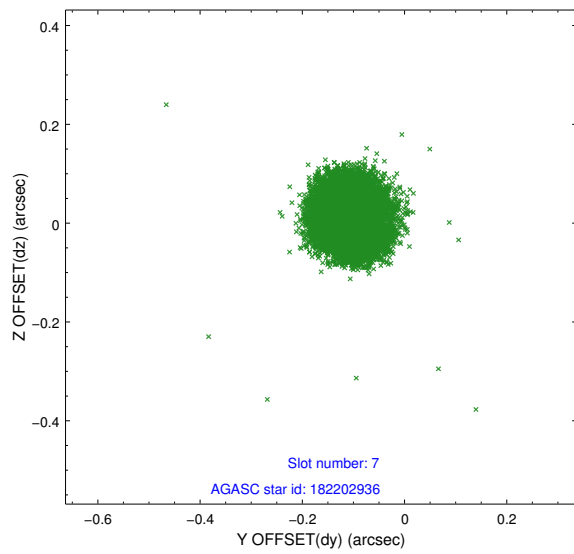
### 2.4.3 Slot 5



## 2.4.4 Slot 6

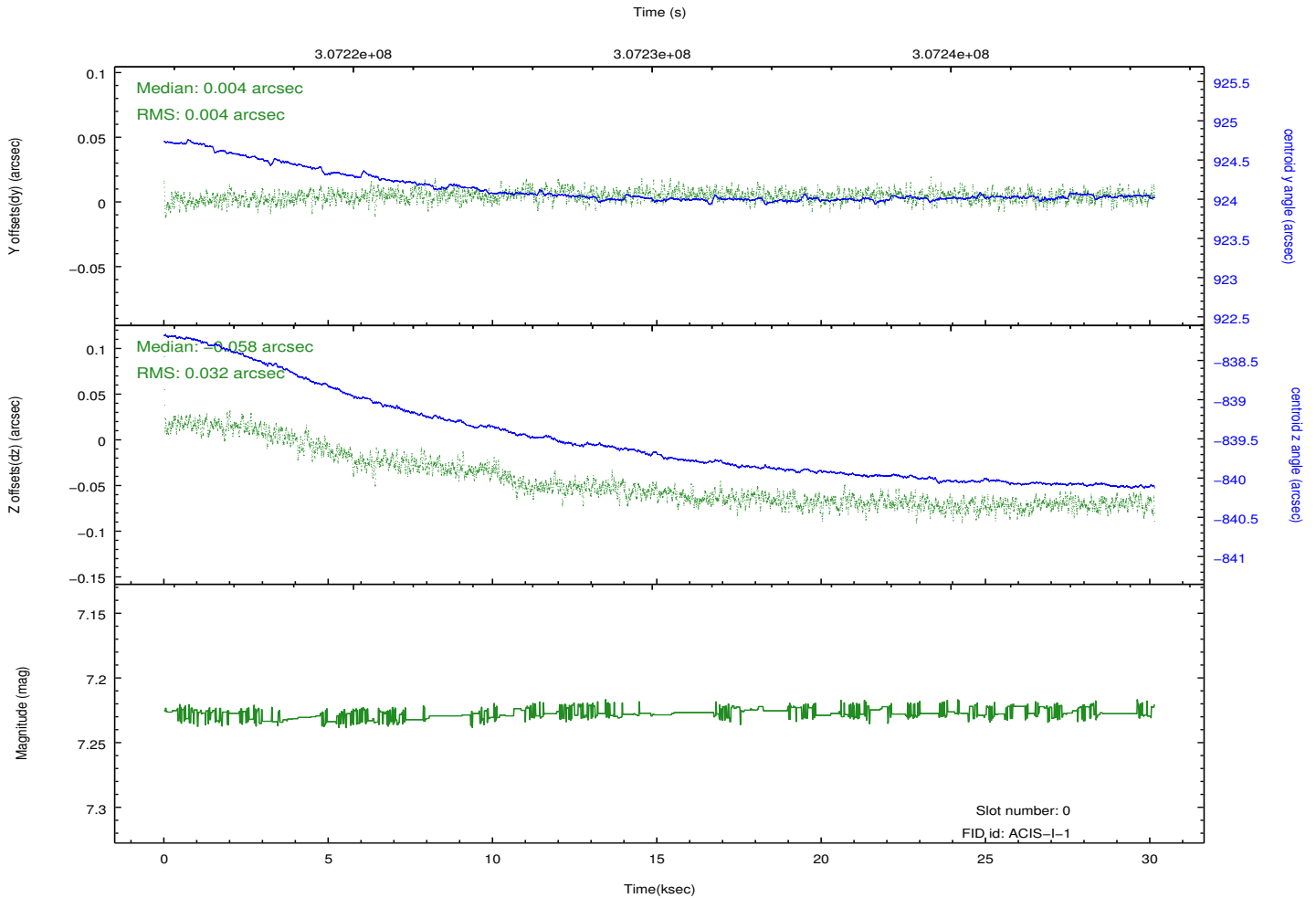
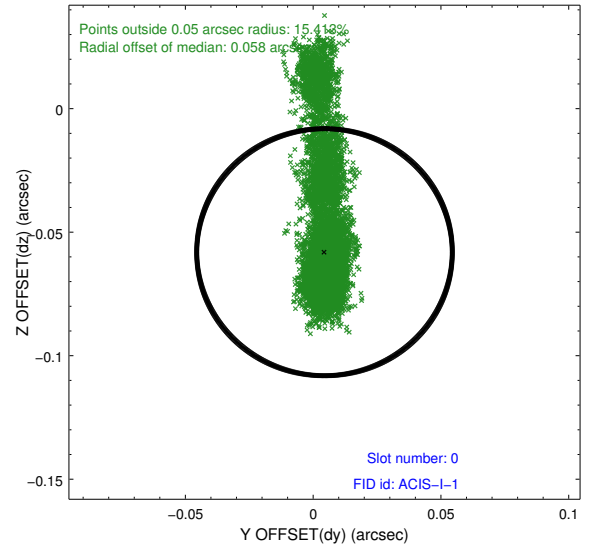
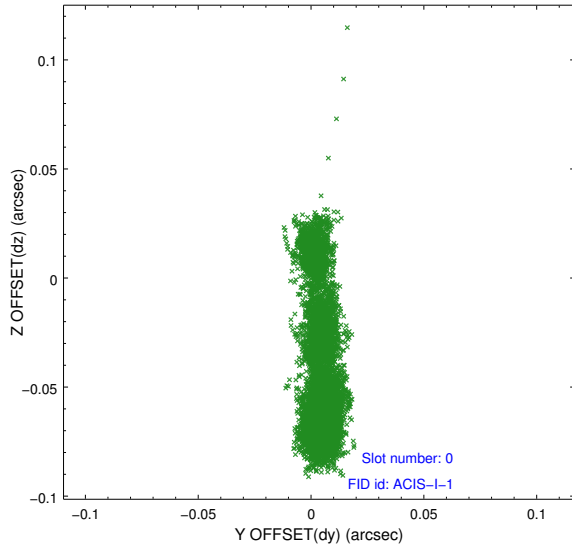


## 2.4.5 Slot 7

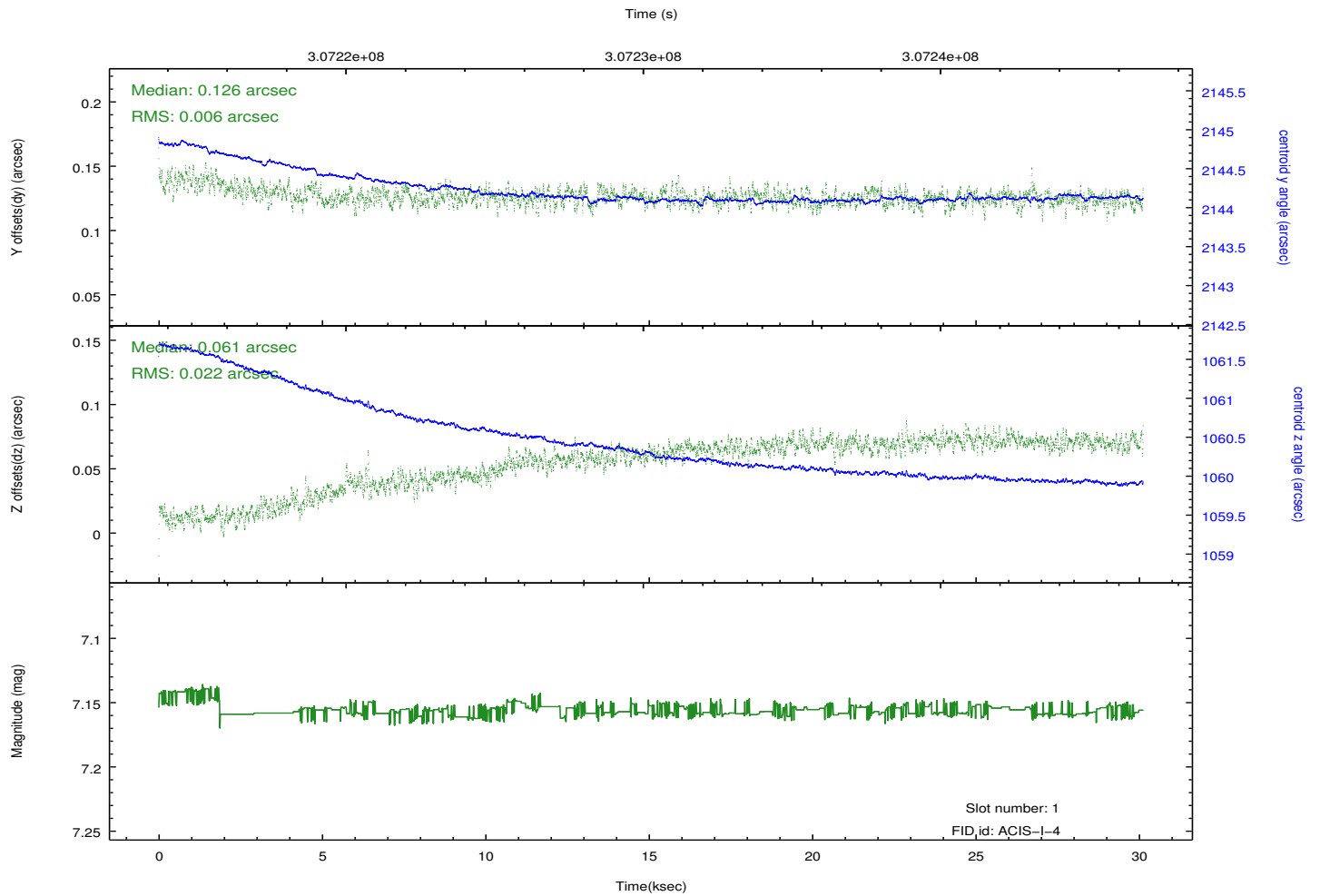
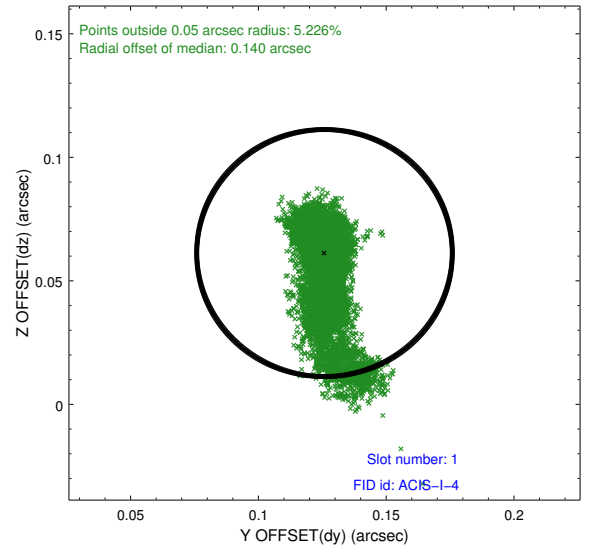
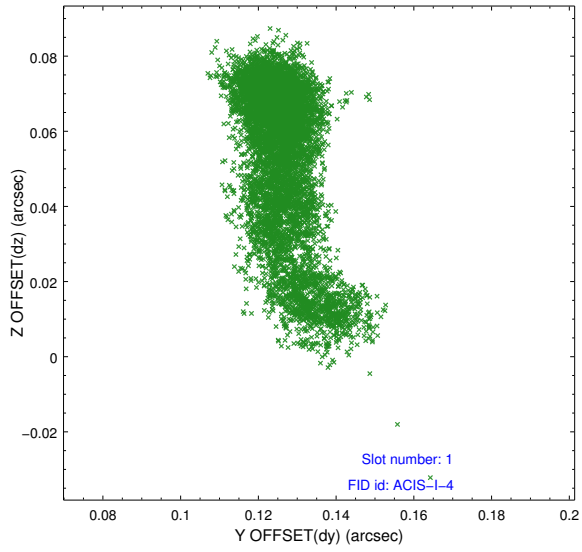


## 2.5 FID Slots

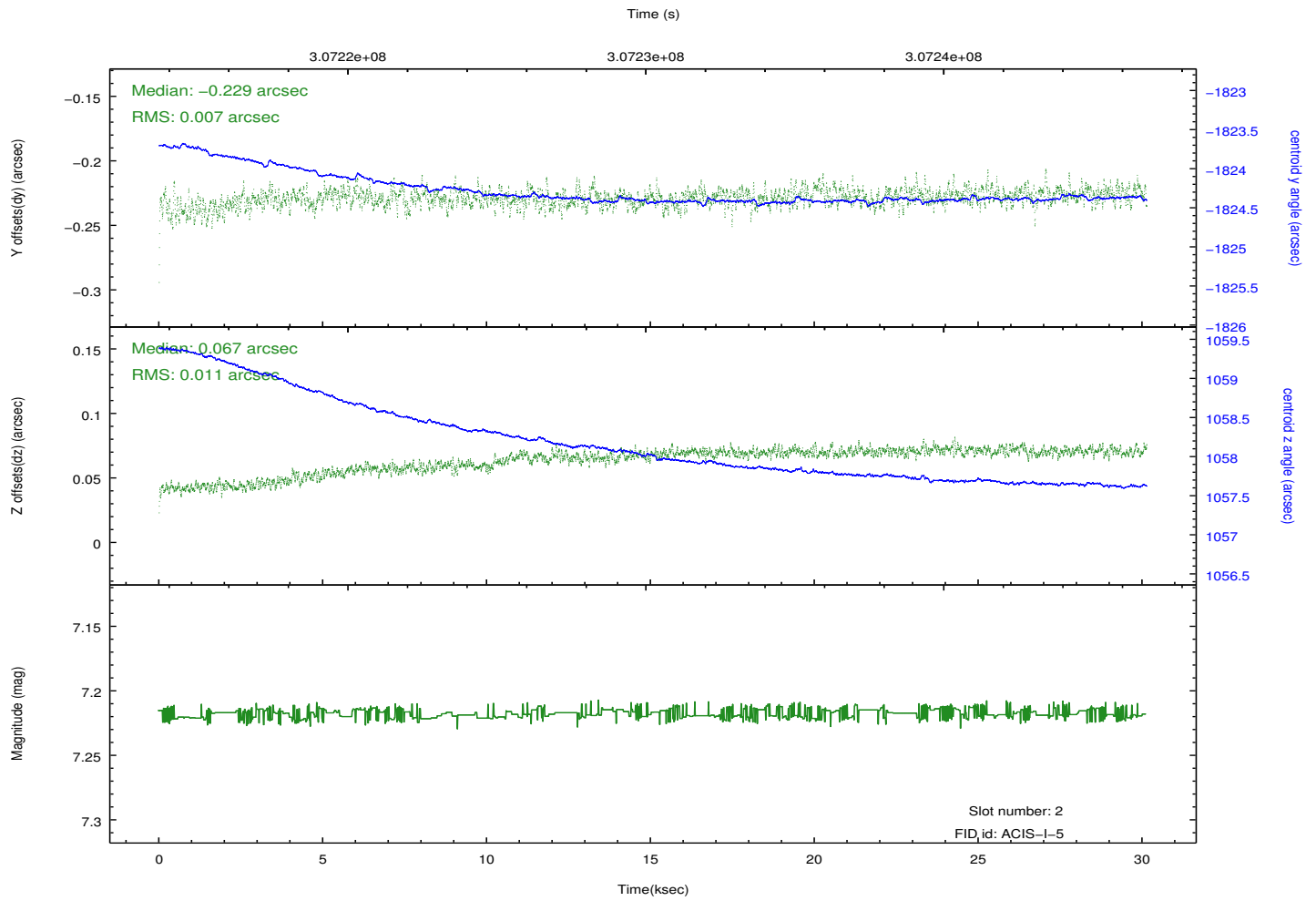
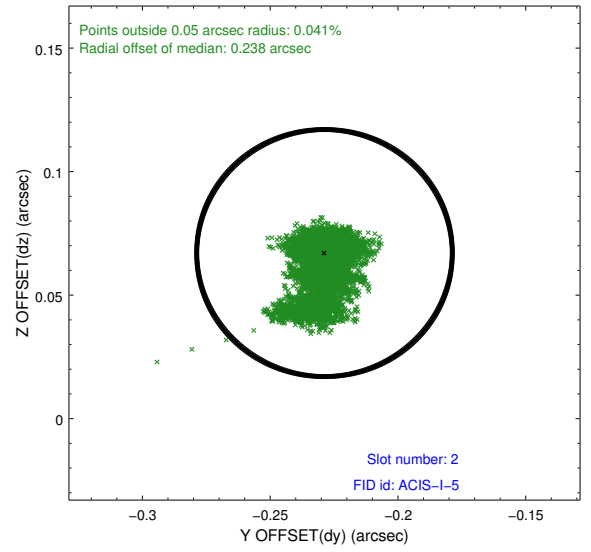
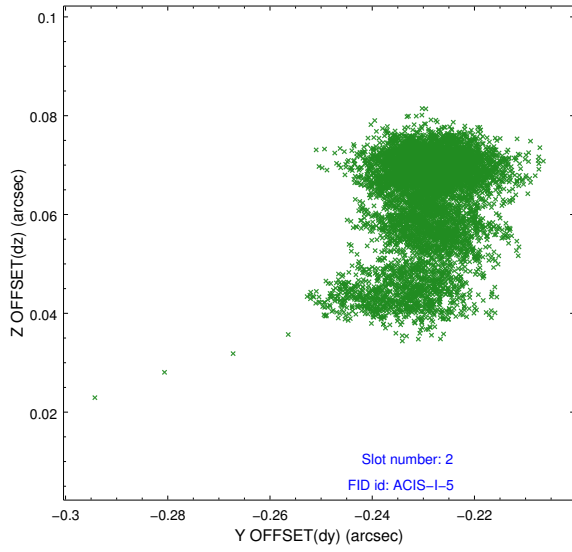
### 2.5.1 Slot 0



## 2.5.2 Slot 1



### 2.5.3 Slot 2



# A Summary

## A.1 Status

V&V Scientist	Jen Lauer
V&V Date (YYYY-MM-DD)	2012.05.04
V&V Edition	1
V&V Disposition and Status	OK
V&V Charge Time	30.1194363

## A.2 Comments