

V&V Reference Report

L2 ASCDS Version : 8.4.4

Observation 7947 - L2 Version 3
Chandra X-Ray Center

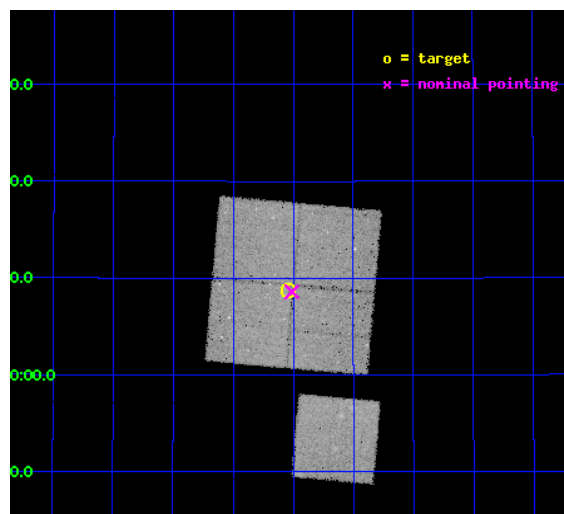
L2 Processing Date : Apr 24 2012

Contents

1	Front	2
2	OBI	3
2.1	OBI	3
2.1.1	Images	3
2.1.2	Bias	3
2.1.3	Parameters	4
2.1.4	Events	4
2.2	Compared Parameters	5
2.3	Aspect	6
2.4	Star Slots	9
2.4.1	Slot 3	9
2.4.2	Slot 4	10
2.4.3	Slot 5	11
2.4.4	Slot 6	12
2.4.5	Slot 7	13
2.5	FID Slots	14
2.5.1	Slot 0	14
2.5.2	Slot 1	15
2.5.3	Slot 2	16
A	Summary	17
A.1	Status	17
A.2	Comments	17

1 Front

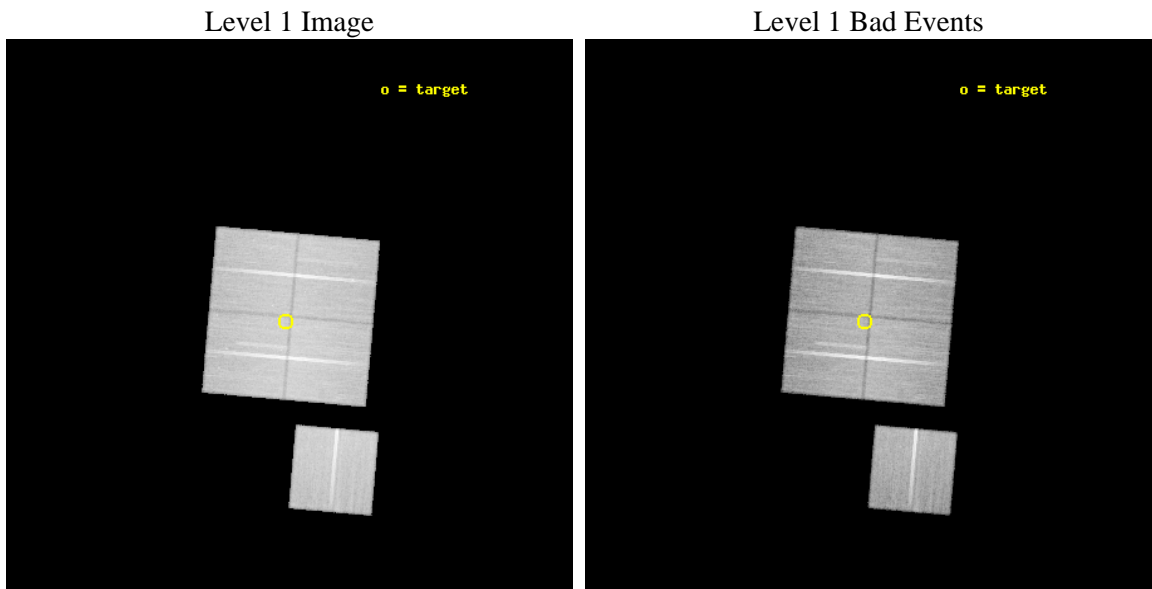
seq_num	900491	Sequence number
obs_id	7947	Observation id
title	Chandra Large Scale Survey of the NOAO Bootes Deep Field (A)	Propo
observer	Dr. Stephen Murray	Principal investigator
object	Bootes3 6	Source name
dtycycle	0	
cycle	P	events from which exps? Prim/Second/Both
ra_targ	218.63678	Observer's specified target RA [deg]
dec_targ	33.146225	Observer's specified target Dec [deg]
ra_nom	218.62784193031	Nominal RA [deg]
dec_nom	33.143152307294	Nominal Dec [deg]
roll_nom	185.0313870658	Nominal Roll [deg]
revision	3	Processing version of data
ontime	43139.518331409	Sum of GTIs [s]
livetime	42575.868765557	Livetime [s]
ontime0	43130.09542042	Sum of GTIs [s]
ontime1	43142.659351528	Sum of GTIs [s]
ontime2	43123.813429952	Sum of GTIs [s]
ontime3	43139.518331409	Sum of GTIs [s]
ontime6	43139.518381178	Sum of GTIs [s]
l2events	131766	Number of level 2 events



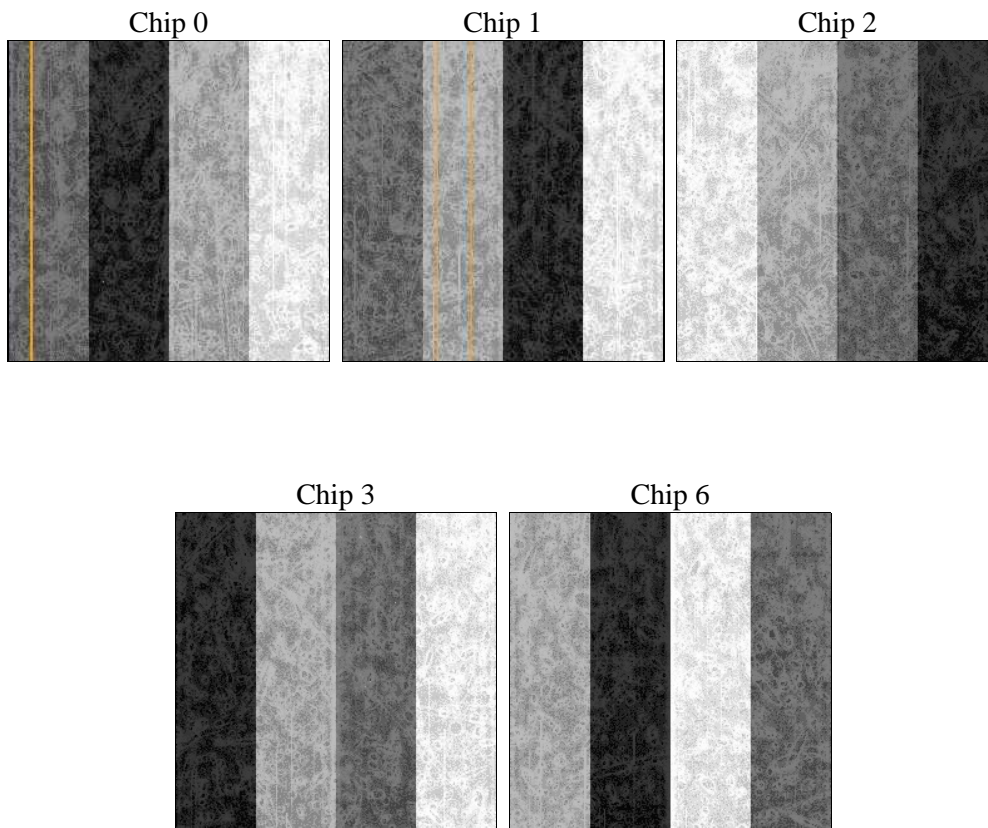
2 OBI

2.1 OBI

2.1.1 Images



2.1.2 Bias



2.1.3 Parameters

obi_num	1	Obi number	sched_exp_time	43000.000000	[s] Scheduled observation exposure time
ascdsver	8.4.4	Processing system revision	ontime	43139.518331409	Sum of GTIs [s]
caldbver	4.4.9	 	ontime0	43130.09542042	Sum of GTIs [s]
date	2012-04-24T10:21:35	Date and time of file creation	ontime1	43142.659351528	Sum of GTIs [s]
revision	3	Processing version of data	ontime2	43123.813429952	Sum of GTIs [s]
			ontime3	43139.518331409	Sum of GTIs [s]
			ontime6	43139.518381178	Sum of GTIs [s]
			l1events	1682802	Number of level 1 events

2.1.4 Events

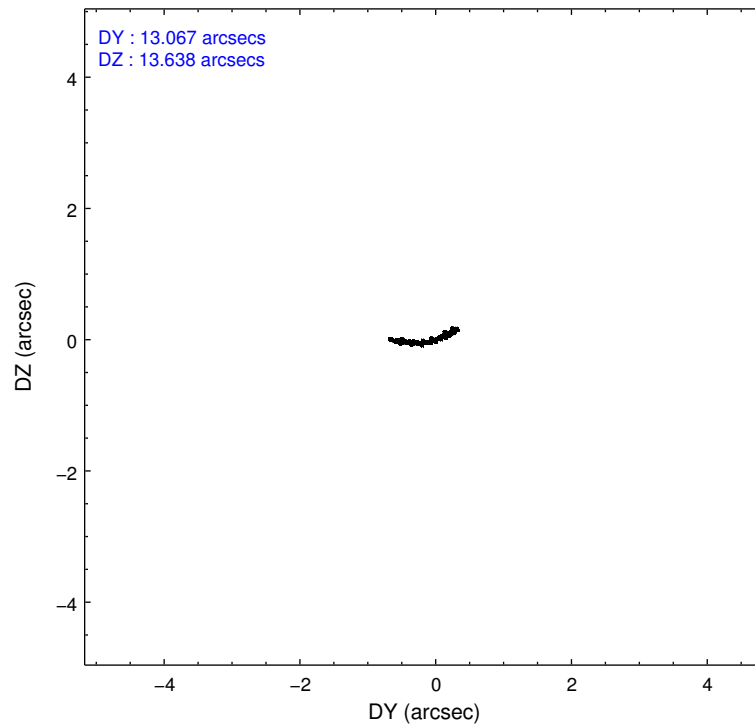
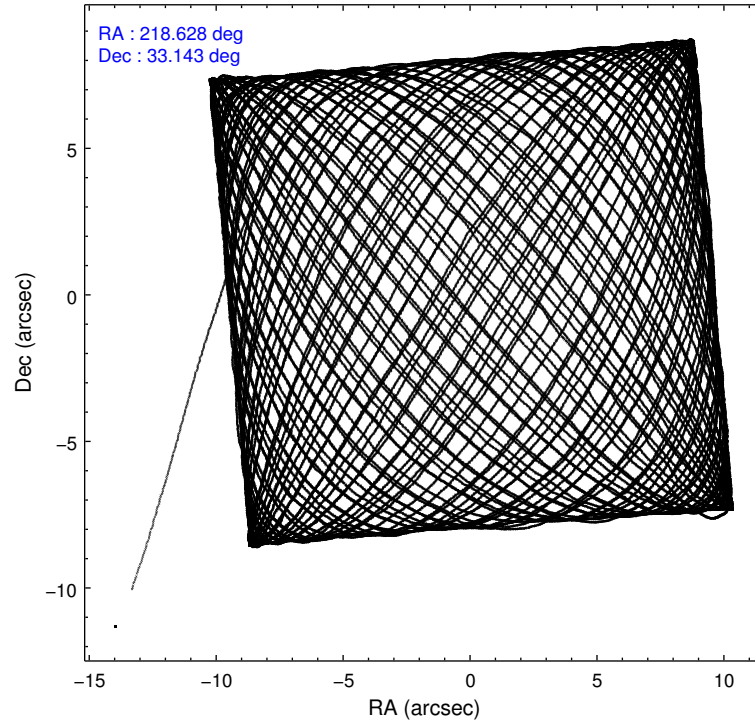
	ccd 0	ccd 1	ccd 2	ccd 3	ccd 6
level 1 events	325105	314613	370670	338544	333870
rejected events	292953	280853	339153	307684	300968
rejected %	90%	89%	91%	90%	90%

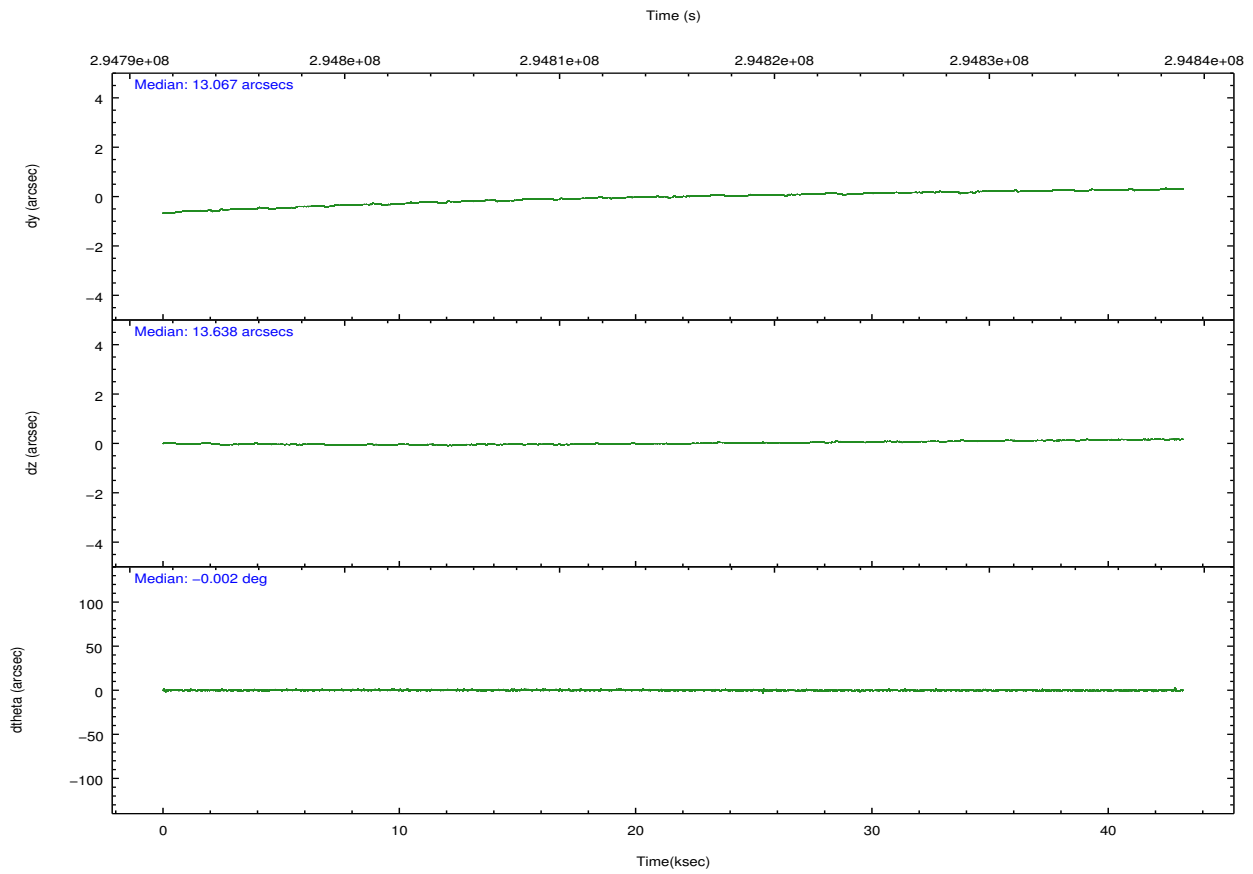
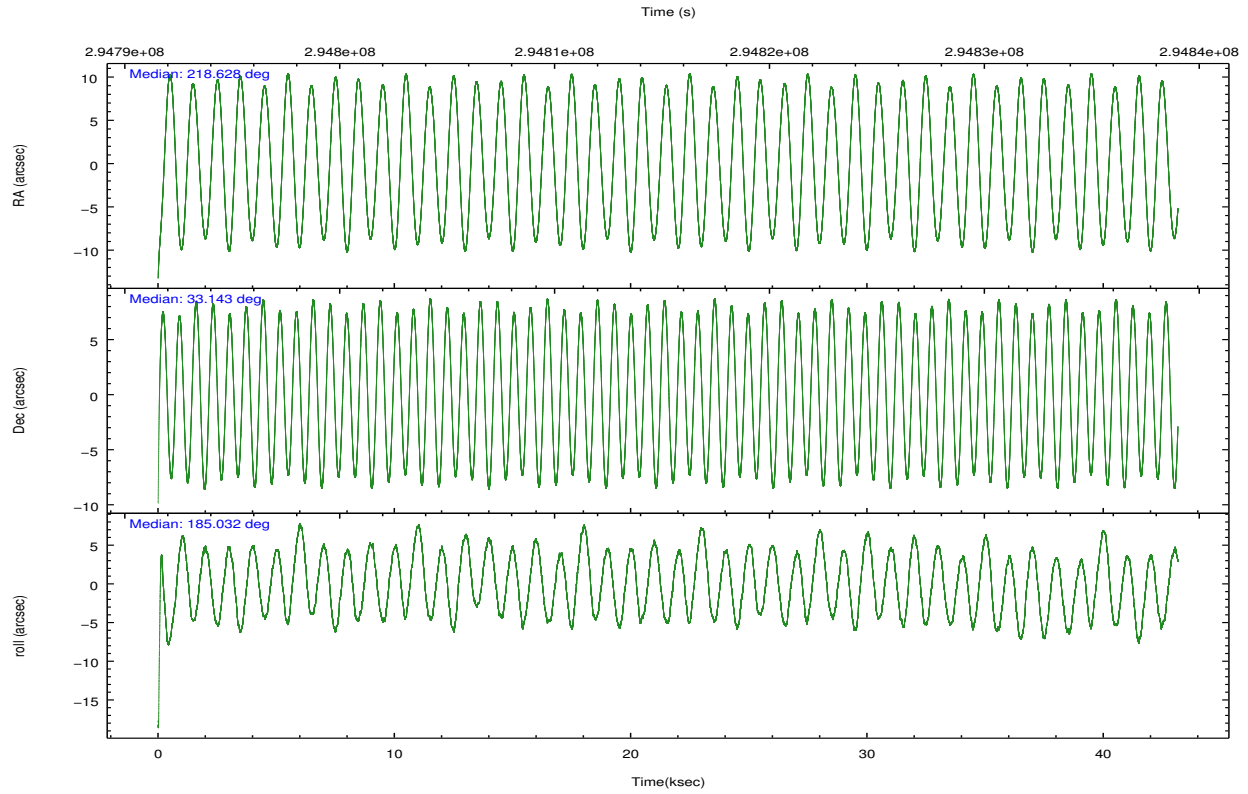
	ccd 0	ccd 1	ccd 2	ccd 3	ccd 6
grade 0 events	11633	11552	11694	11498	11994
	3%	3%	3%	3%	3%
grade 1 events	187	156	180	173	160
	0%	0%	0%	0%	0%
grade 2 events	7891	7564	7846	6741	7286
	2%	2%	2%	1%	2%
grade 3 events	3706	4007	3392	3500	3581
	1%	1%	0%	1%	1%
grade 4 events	3430	3933	3465	3466	3601
	1%	1%	0%	1%	1%
grade 5 events	9705	11024	8886	11378	10957
	2%	3%	2%	3%	3%
grade 6 events	5719	6967	5340	5871	6695
	1%	2%	1%	1%	2%
grade 7 events	282834	269410	329867	295917	289596
	86%	85%	88%	87%	86%

2.2 Compared Parameters

Parameter	Planned	Actual	Parameter	Planned	Actual
Instrument	ACIS	ACIS	Obspar format version number	7	7
Detector	ACIS-01236	ACIS-01236	Obspar file type	PREDICTED	ACTUAL
Grating	NONE	NONE	Obspar update status	NONE	UPDATED
Data mode	VFAINT	VFAINT	Number of optional ACIS chips dropped	0	0
Observation mode	POINTING	POINTING	On-chip summing requested	N	N
[deg] Pointing RA	218.654670	218.6278419303145	Subarray requested	NONE	NONE
[deg] Pointing Dec	33.159023	33.14315230729396	Alternating exposures requested	N	N
[deg] Pointing Roll	184.808040	185.0313870658048	[s] Primary exposure time	0.000000	3.1
[mm] SIM focus pos	-0.782348	-0.7809083437167272			
[mm] SIM defocus	0	0.001439871863259334			
[mm] SIM translation stage pos	-233.592463	-233.5874344608287			
[mm] SIM translation stage offset	0	-0.005018542100998502			
[s] Observation start time (MET)	294793857.184000	294792719.51836			
Observation start date	2007-05-05T23:09:52	2007-05-05T22:51:59			
[s] Observation end time (MET)	294836857.184000	294837046.15798			
Observation end date	2007-05-06T11:06:32	2007-05-06T11:10:46			
Read mode	TIMED	TIMED			

2.3 Aspect



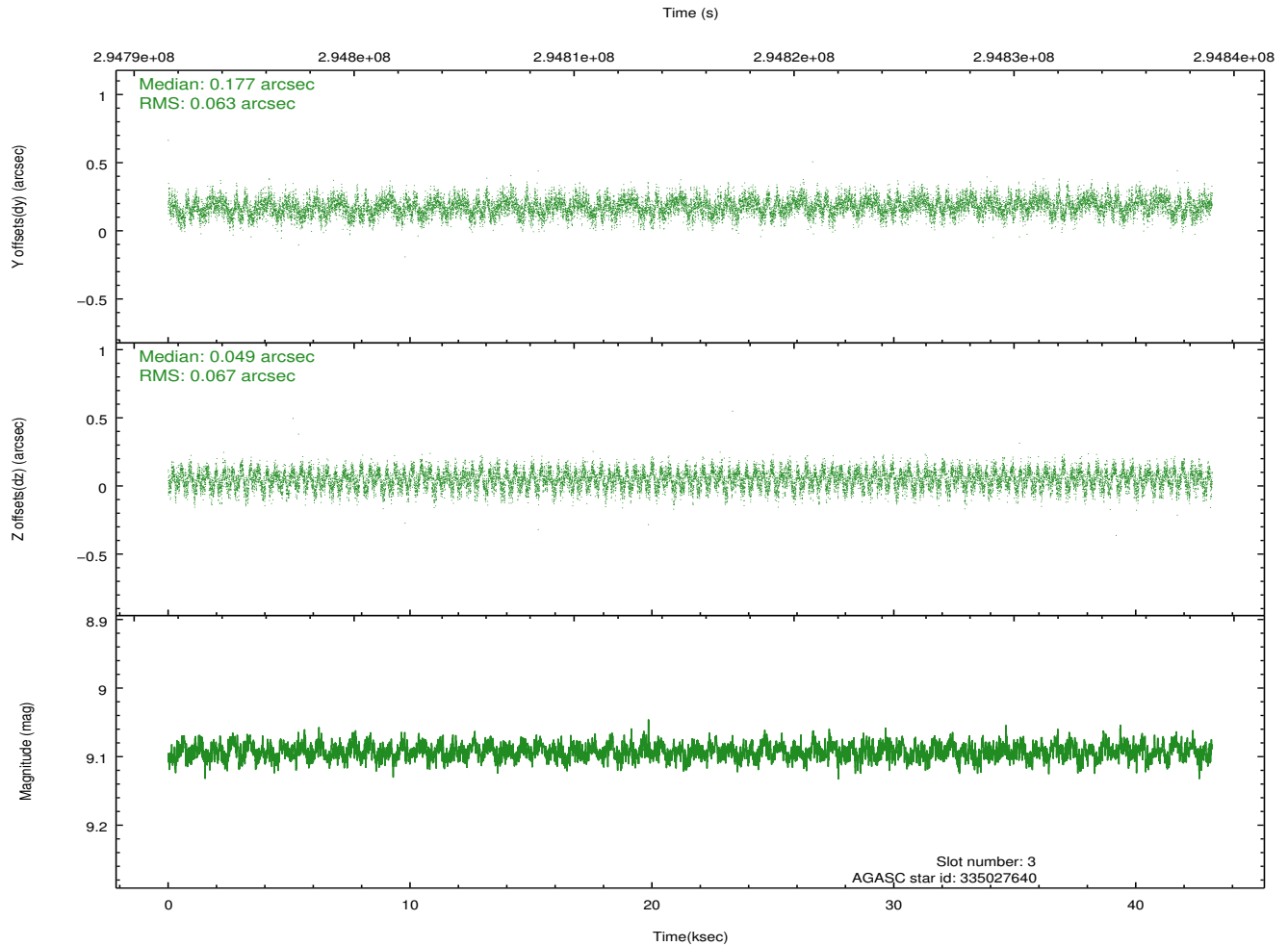
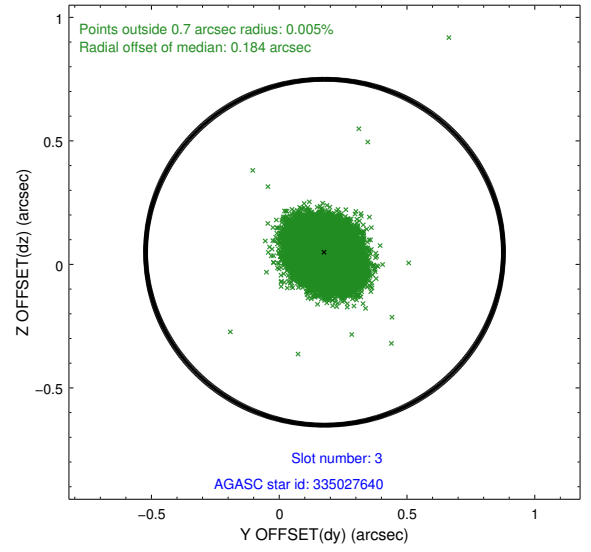
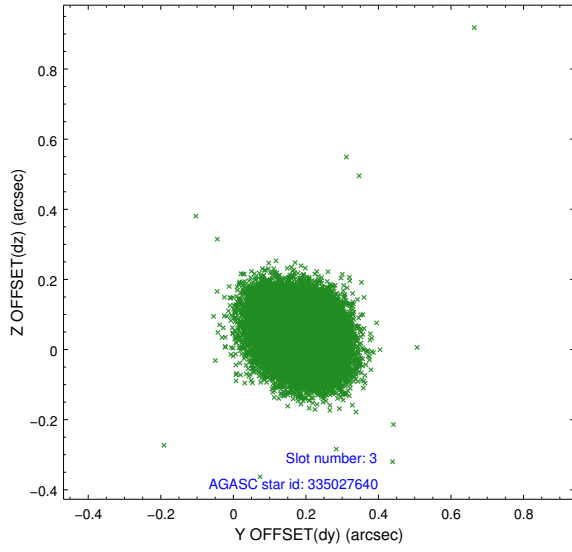


Slot Statistics

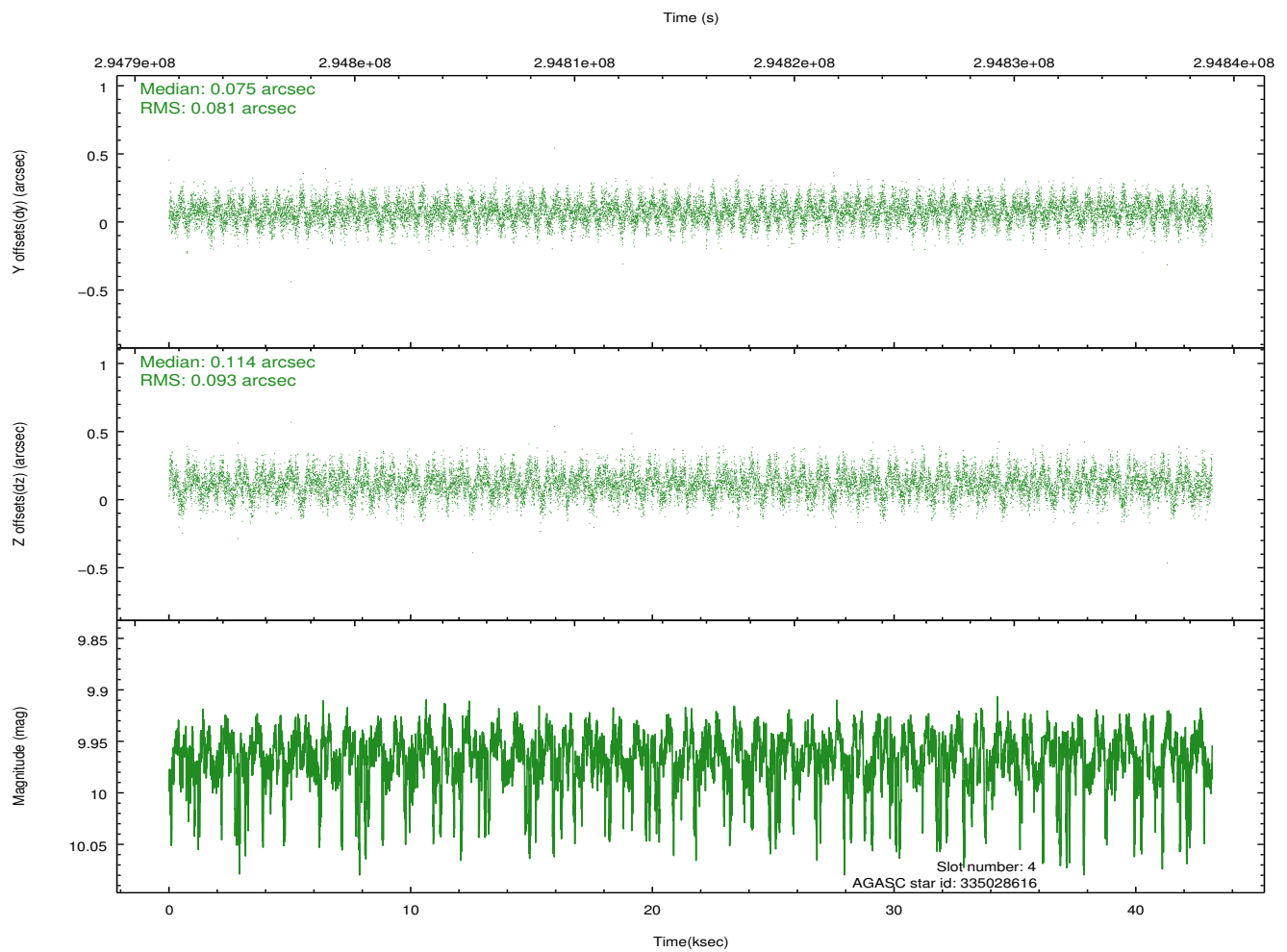
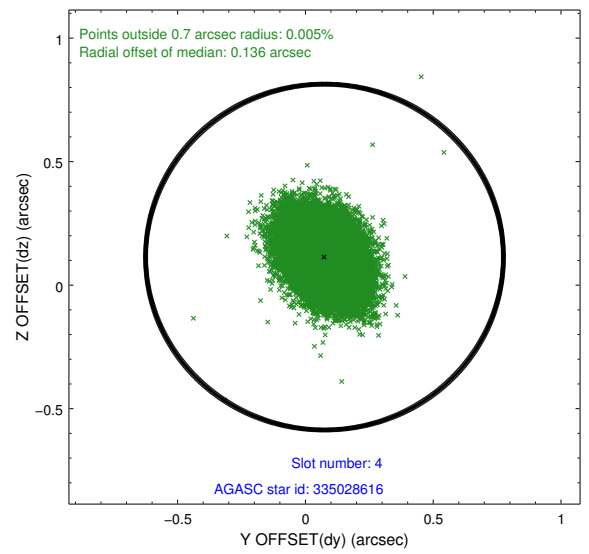
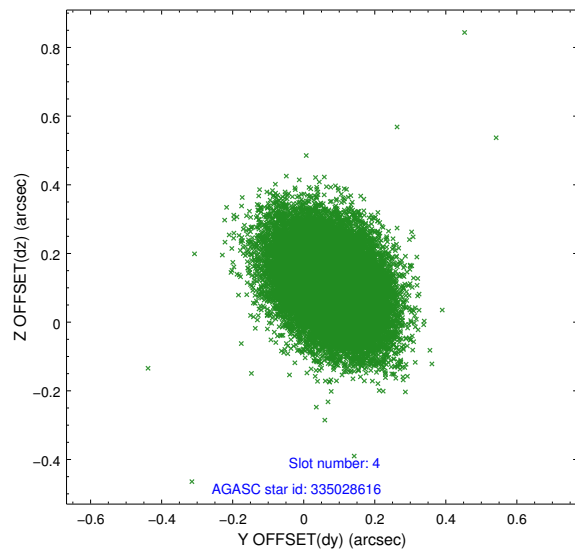
slot	status	id	mag	n_pts	med_dy	med_dz	dr1	dr2	ra	dec	mean_y	mean_z
0	FID	ACIS-I-1	7.23	10526	0.039	0.006	0.009	0.017	0.000000	0.000000	926.55	-837.21
1	FID	ACIS-I-5	7.22	10523	-0.218	0.045	0.012	0.023	0.000000	0.000000	-1821.82	1060.30
2	FID	ACIS-I-6	7.24	10524	0.087	0.019	0.009	0.014	0.000000	0.000000	392.12	1704.79
3	GUIDE	335027640	9.09	21030	0.177	0.049	0.099	0.154	218.092211	33.193770	1678.24	-270.96
4	GUIDE	335028616	9.96	21009	0.075	0.114	0.131	0.216	218.529874	33.175085	370.32	-88.33
5	GUIDE	335152784	7.24	21048	-0.177	-0.158	0.060	0.094	219.280617	33.678221	-2025.67	-1710.70
6	GUIDE	335154960	9.57	21043	0.034	-0.010	0.090	0.145	219.209961	33.303073	-1709.44	-380.28
7	GUIDE	335157088	9.09	21026	-0.108	0.007	0.081	0.130	219.274029	33.726909	-2019.65	-1886.92

2.4 Star Slots

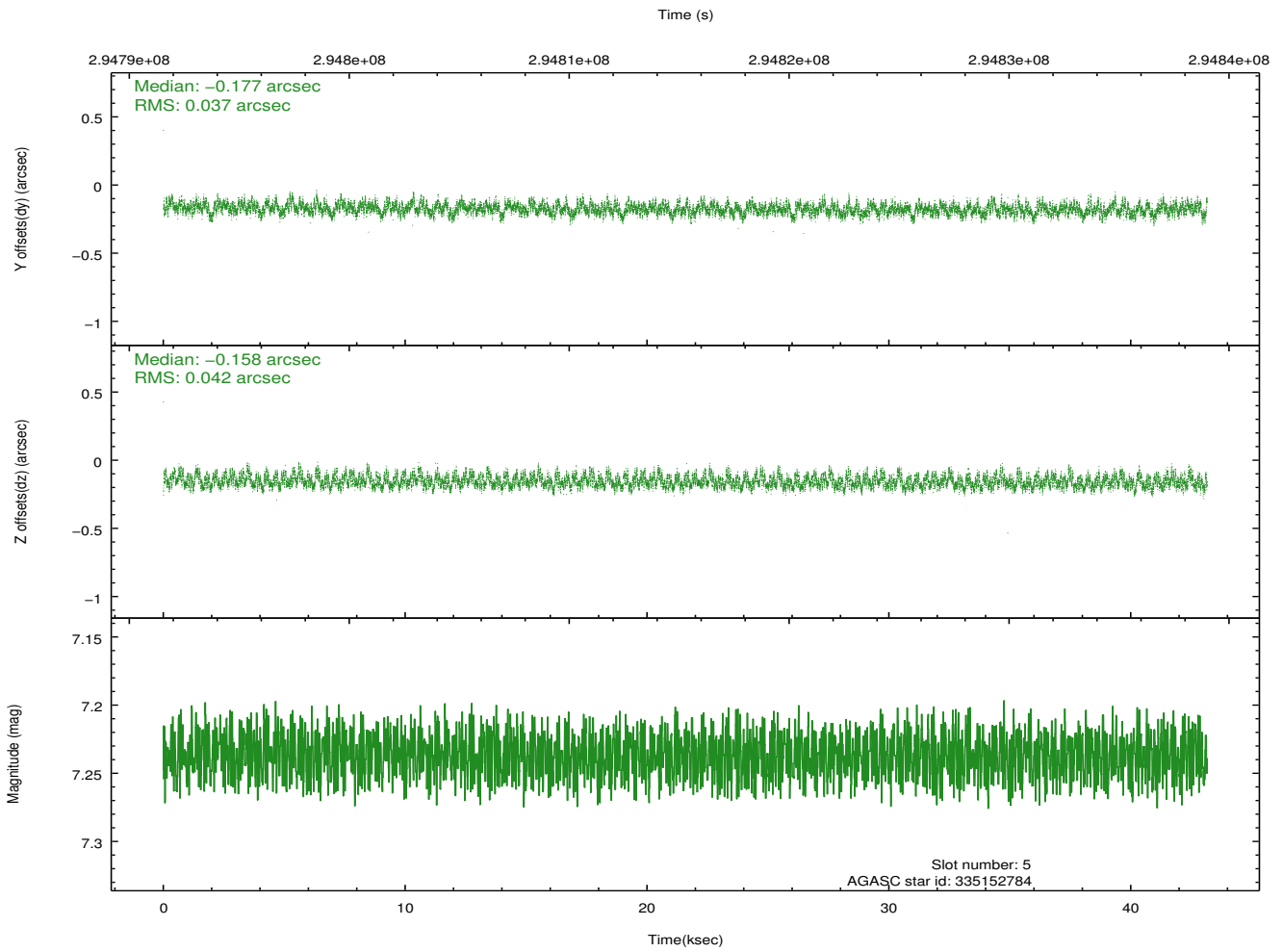
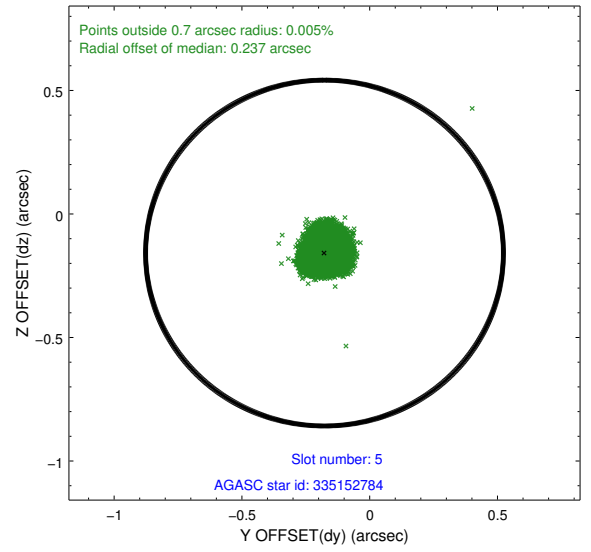
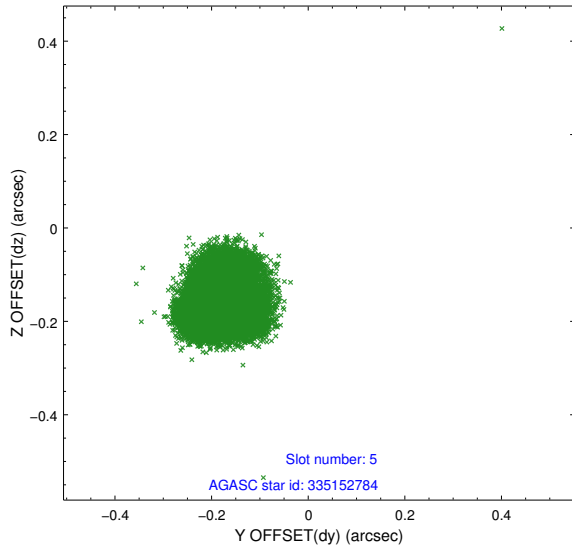
2.4.1 Slot 3



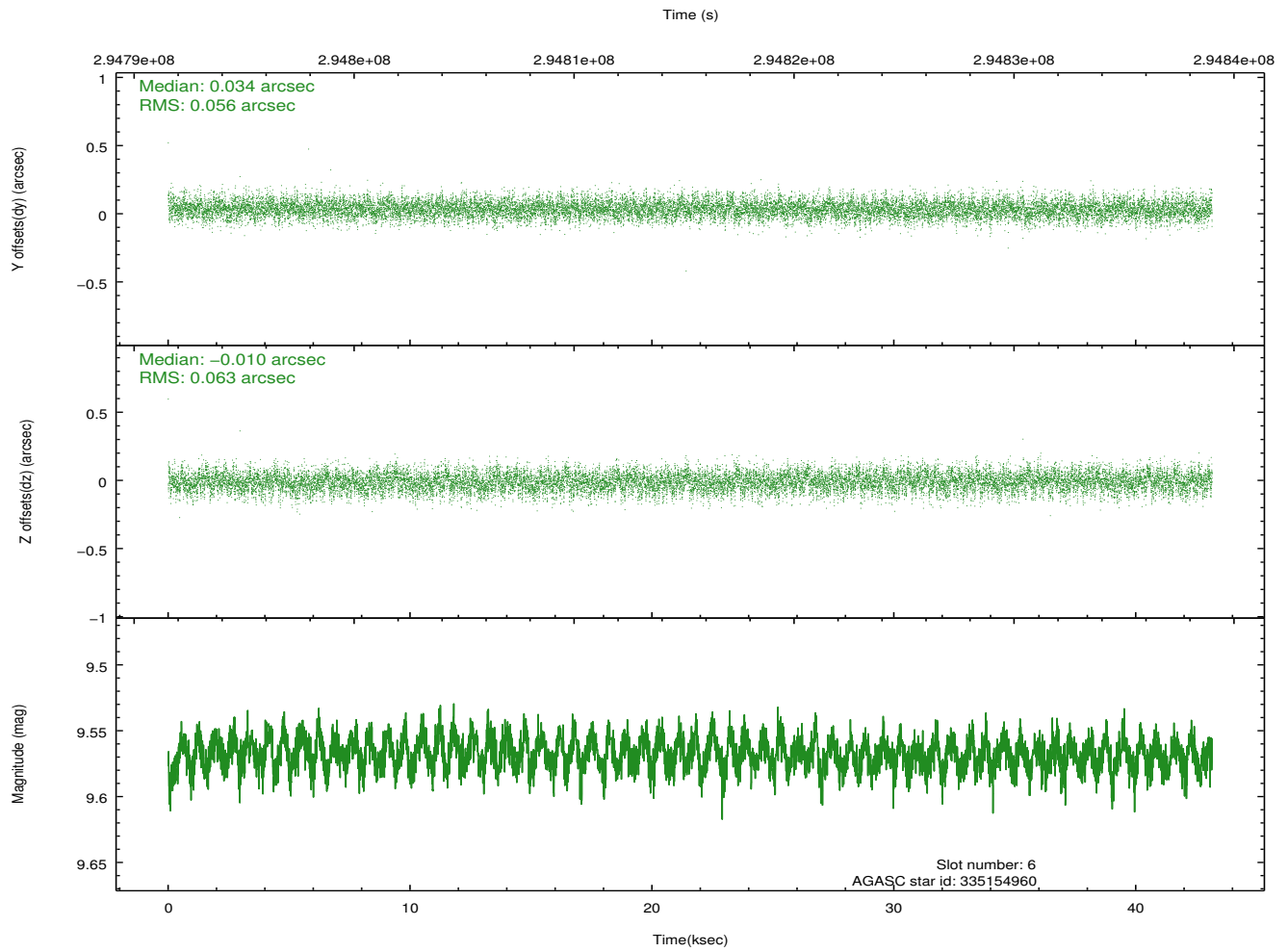
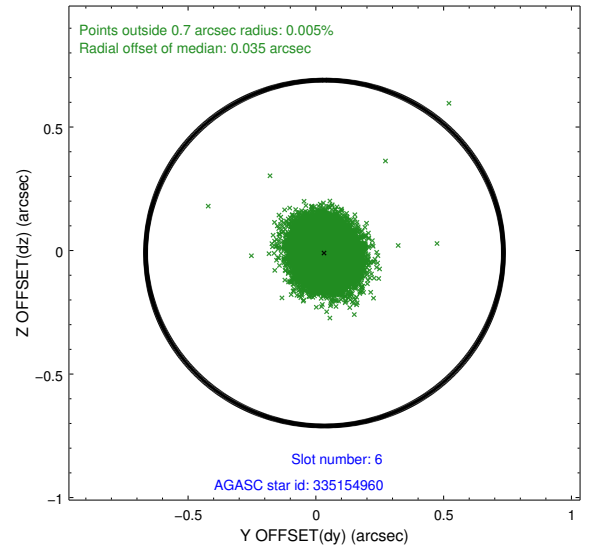
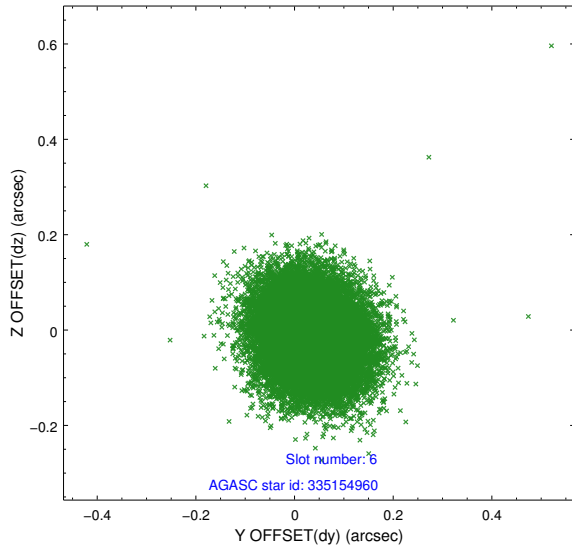
2.4.2 Slot 4



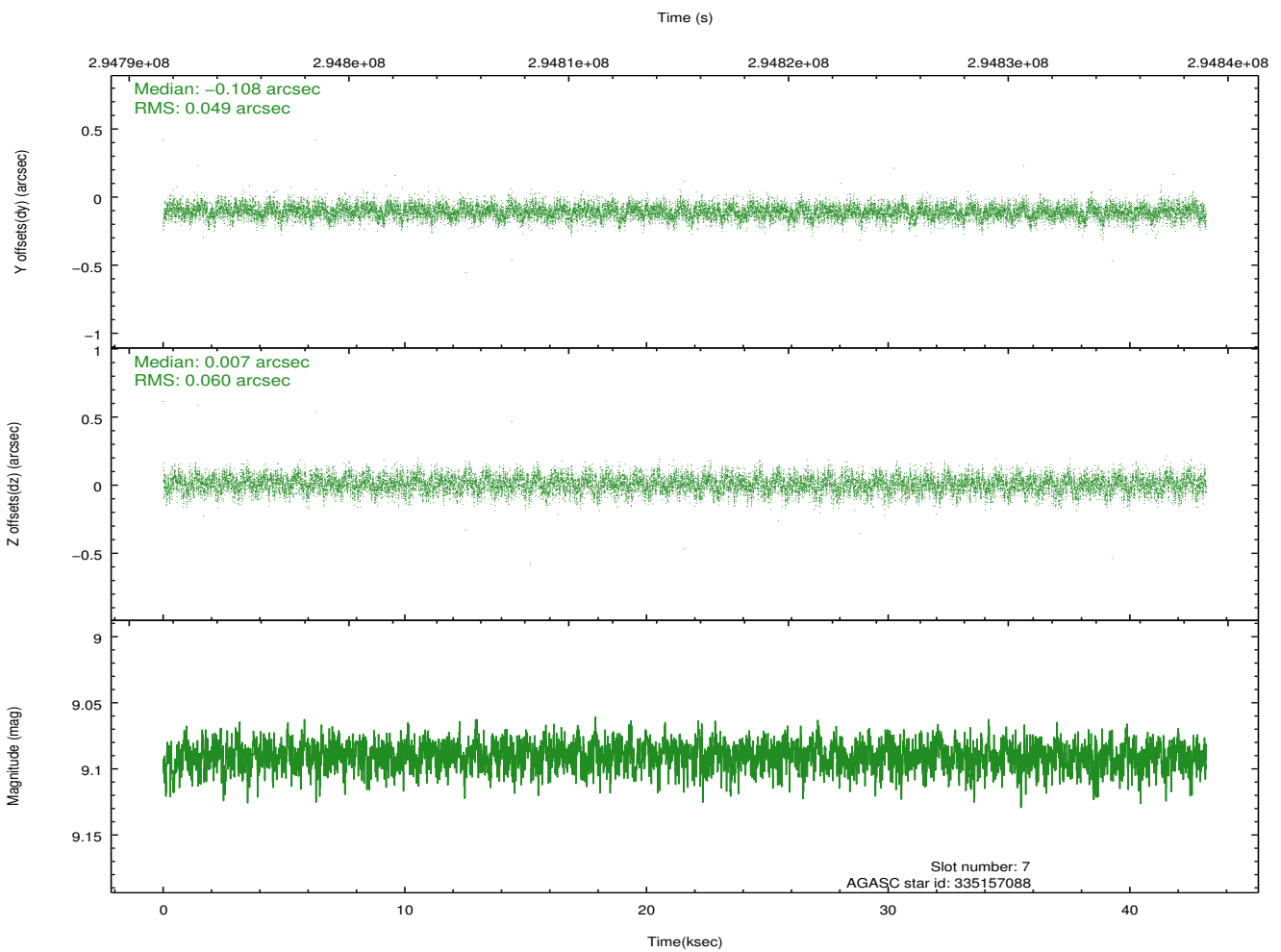
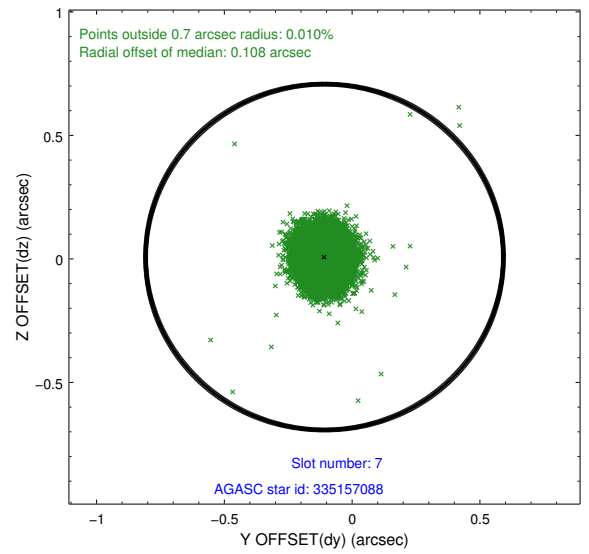
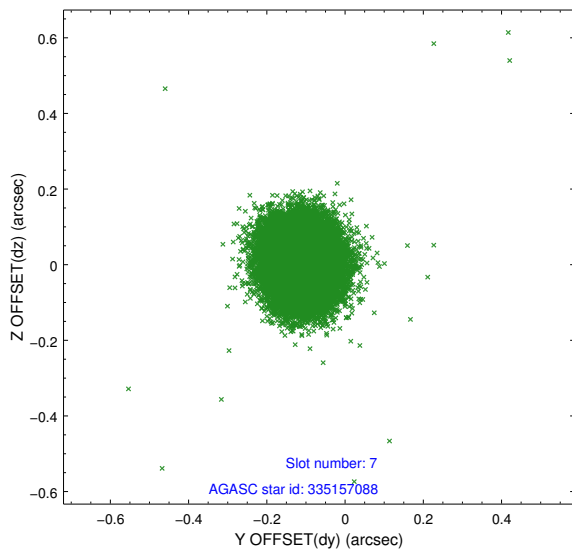
2.4.3 Slot 5



2.4.4 Slot 6

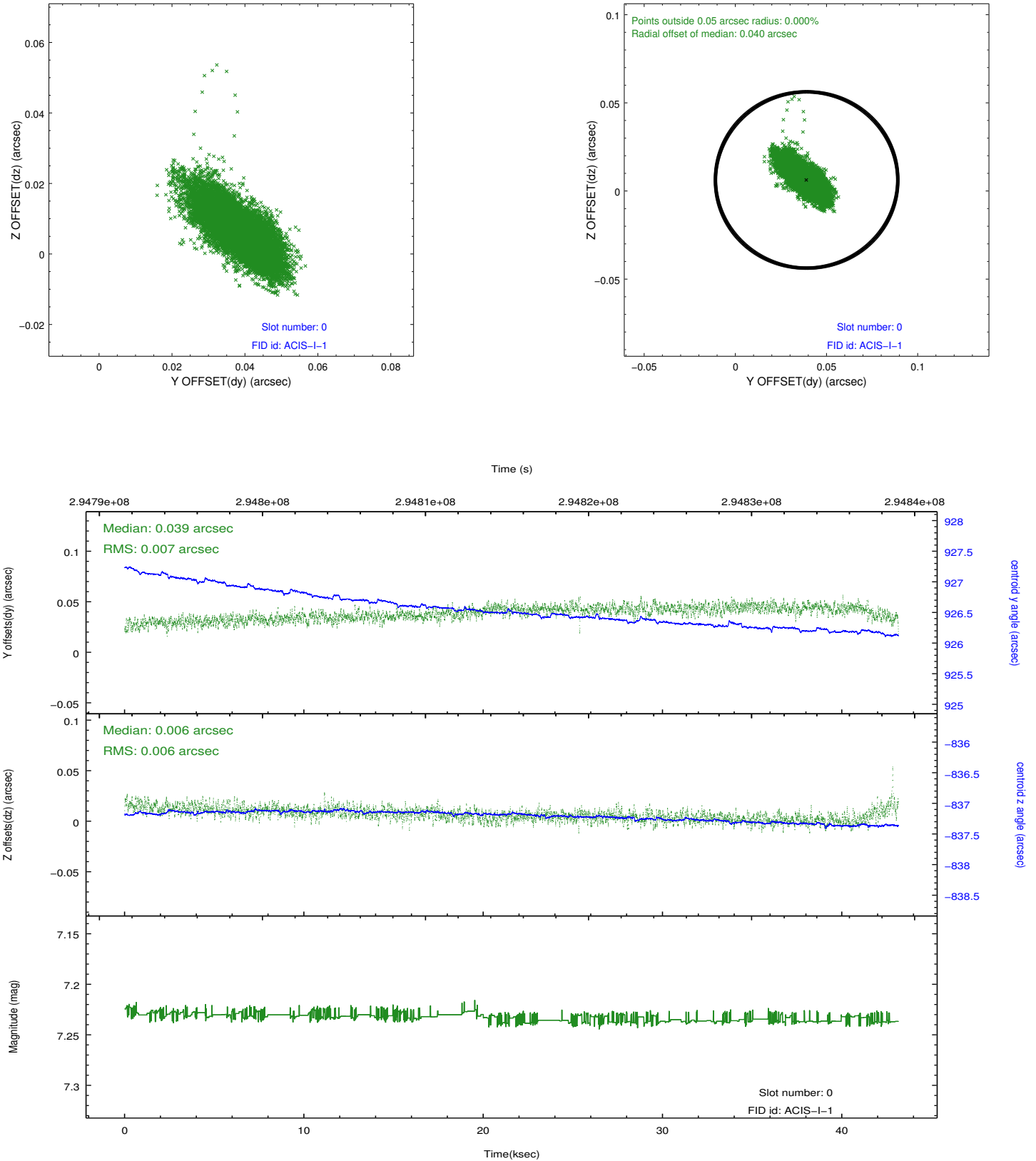


2.4.5 Slot 7

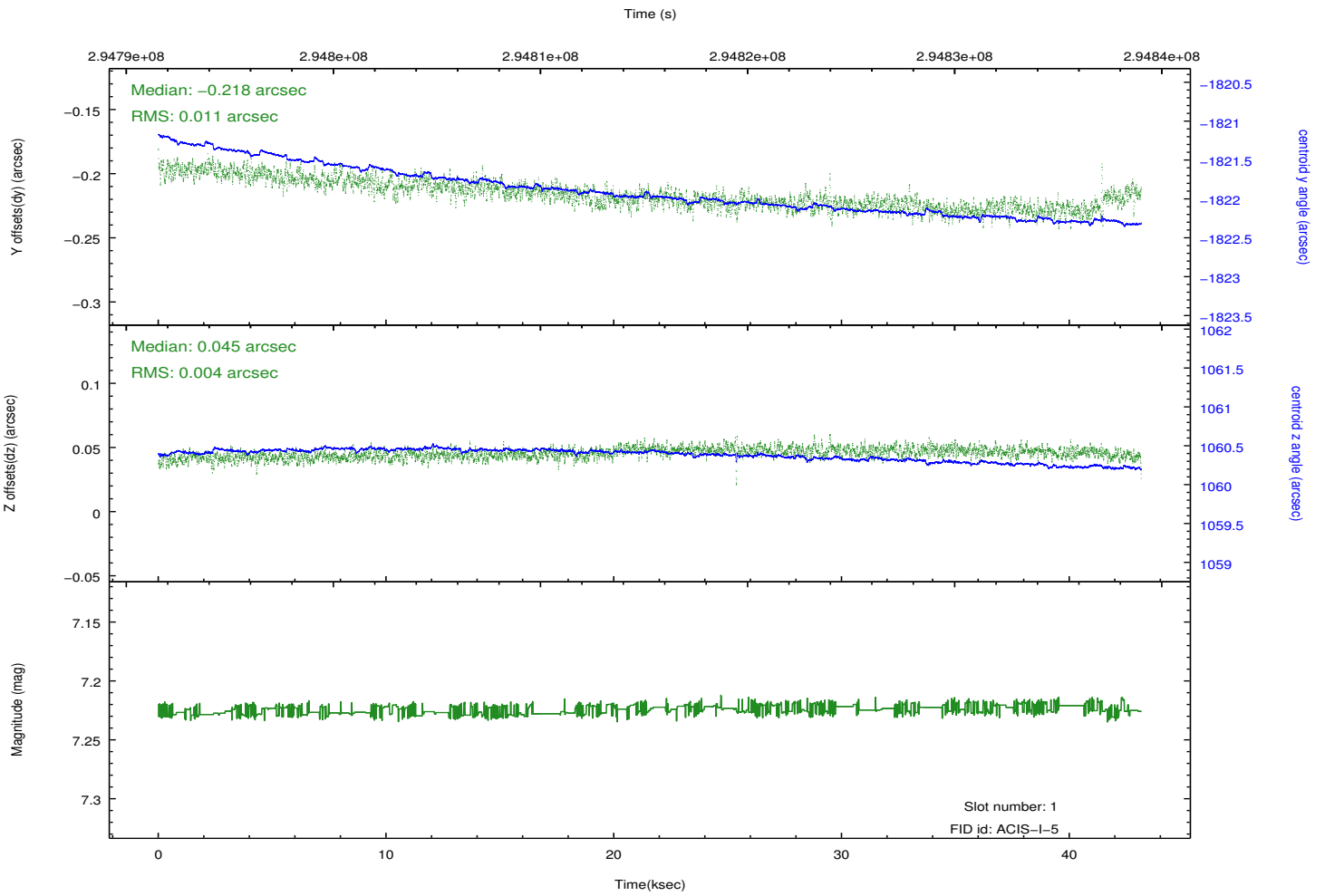
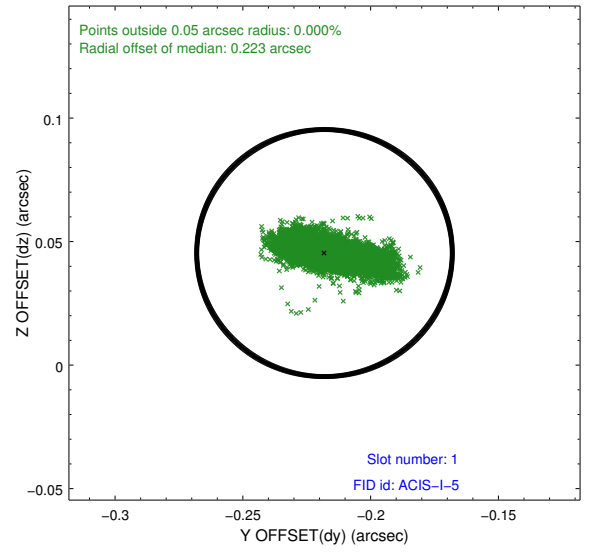
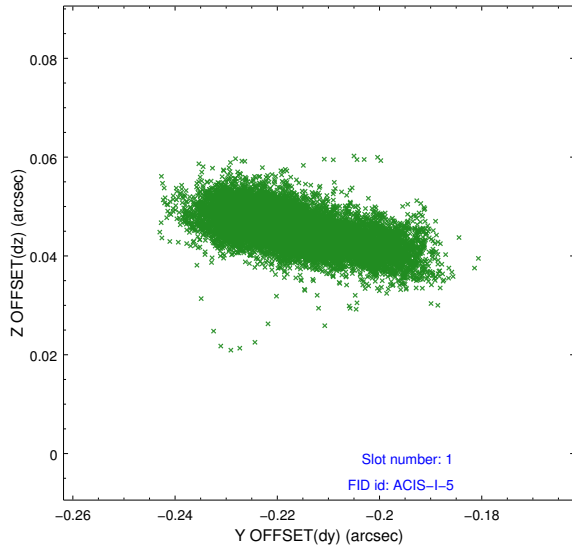


2.5 FID Slots

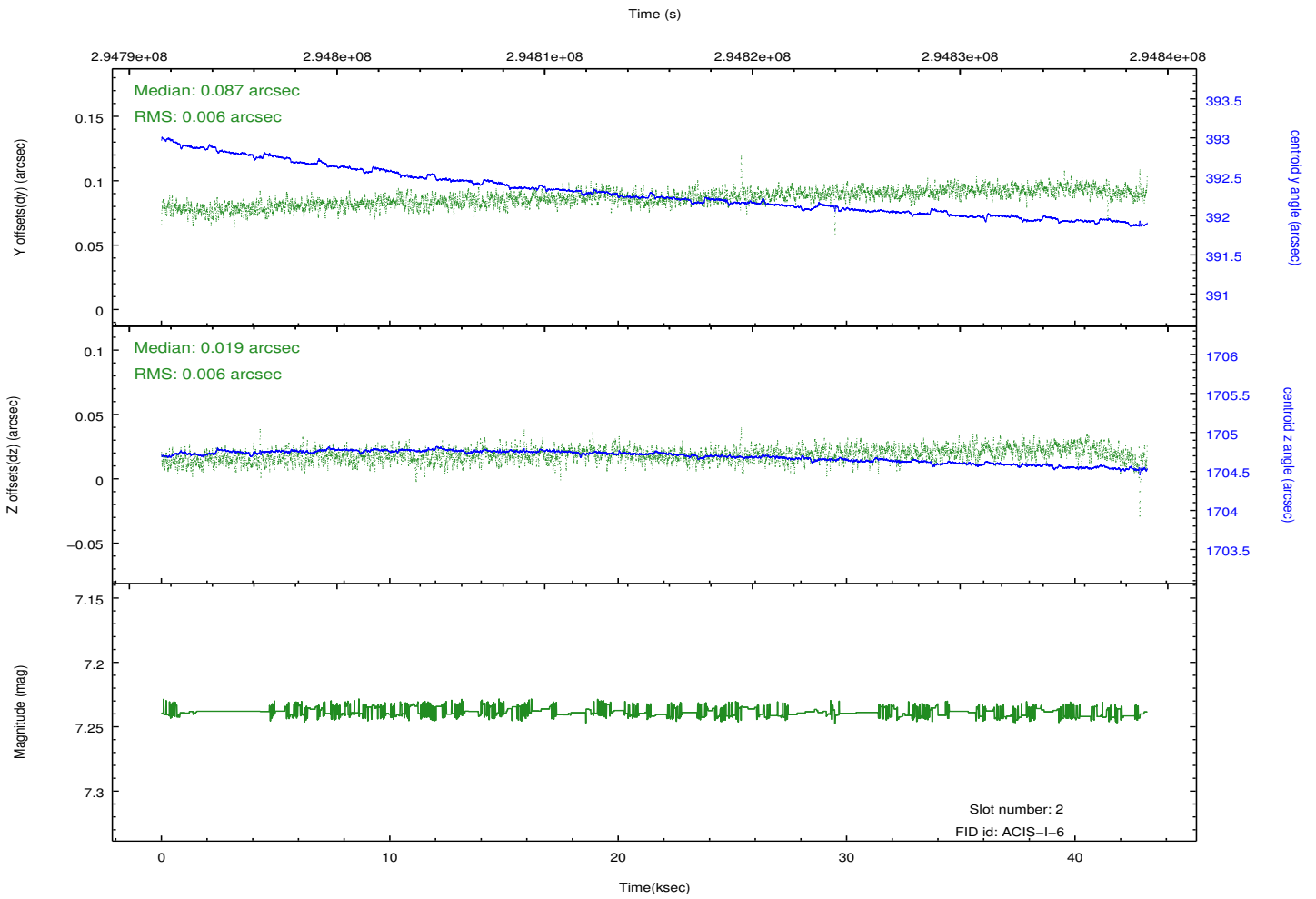
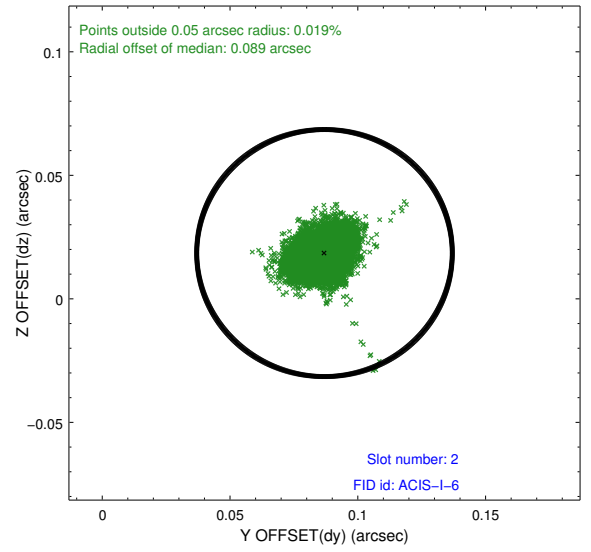
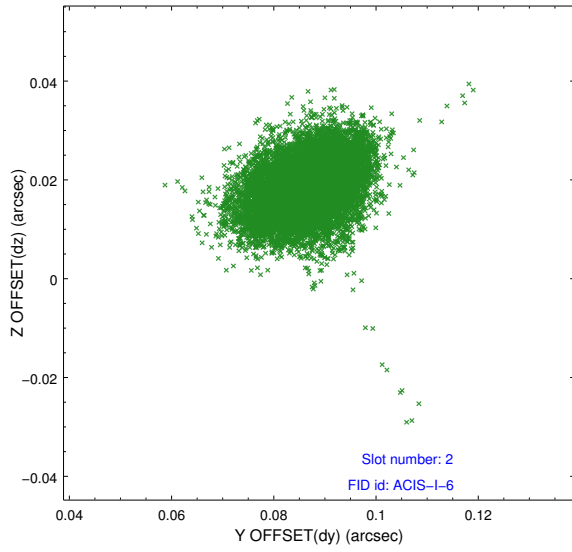
2.5.1 Slot 0



2.5.2 Slot 1



2.5.3 Slot 2



A Summary

A.1 Status

V&V Scientist	Jen Lauer
V&V Date (YYYY-MM-DD)	2012.04.25
V&V Edition	1
V&V Disposition and Status	OK
V&V Charge Time	43.1395183

A.2 Comments