

# V&V Reference Report

## L2 ASCDS Version : 8.4.3.1

Observation 8007 - L2 Version 3  
Chandra X-Ray Center

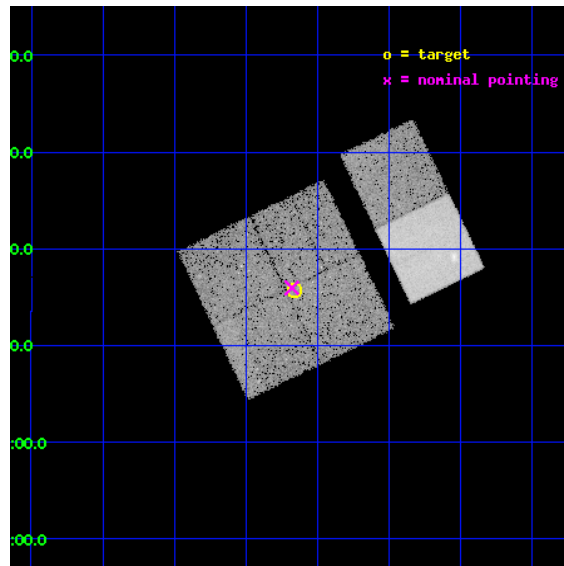
L2 Processing Date : Apr 15 2012

## Contents

<b>1</b>	<b>Front</b>	<b>2</b>
<b>2</b>	<b>OBI</b>	<b>3</b>
2.1	OBI . . . . .	3
2.1.1	Images . . . . .	3
2.1.2	Bias . . . . .	3
2.1.3	Parameters . . . . .	4
2.1.4	Events . . . . .	4
2.2	Compared Parameters . . . . .	5
2.3	Aspect . . . . .	6
2.4	Star Slots . . . . .	9
2.4.1	Slot 3 . . . . .	9
2.4.2	Slot 4 . . . . .	10
2.4.3	Slot 5 . . . . .	11
2.4.4	Slot 6 . . . . .	12
2.4.5	Slot 7 . . . . .	13
2.5	FID Slots . . . . .	14
2.5.1	Slot 0 . . . . .	14
2.5.2	Slot 1 . . . . .	15
2.5.3	Slot 2 . . . . .	16
<b>A</b>	<b>Summary</b>	<b>17</b>
A.1	Status . . . . .	17
A.2	Comments . . . . .	17

# 1 Front

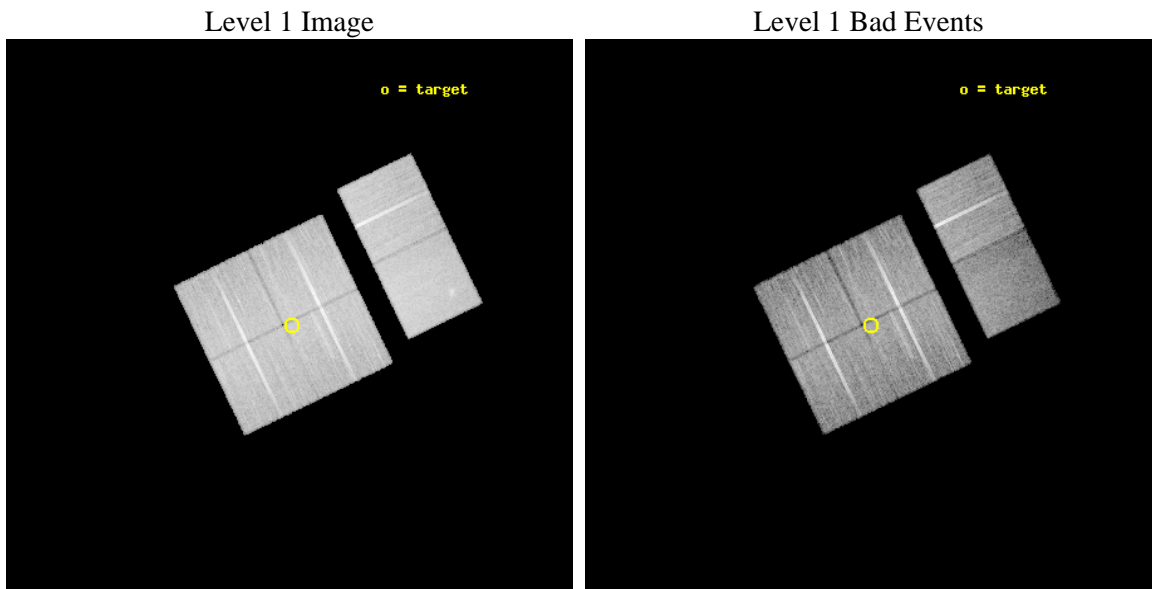
seq_num	900551	Sequence number
obs_id	8007	Observation id
title	THE CHANDRA-COSMOS SURVEY	Proposal title
observer	Dr. Martin Elvis	Principal investigator
object	C-COSMOS3-4	Source name
dtcycle	0	&#160
cycle	P	events from which exps? Prim/Second/Both
ra_targ	150.04145	Observer's specified target RA [deg]
dec_targ	2.262956	Observer's specified target Dec [deg]
ra_nom	150.04492007281	Nominal RA [deg]
dec_nom	2.2661182231328	Nominal Dec [deg]
roll_nom	64.208560047312	Nominal Roll [deg]
revision	3	Processing version of data
ontime	22031.999917984	Sum of GTIs [s]
livetime	21753.017468945	Livetime [s]
ontime0	22025.517937362	Sum of GTIs [s]
ontime1	22031.999917984	Sum of GTIs [s]
ontime2	22031.999917984	Sum of GTIs [s]
ontime3	22031.999917984	Sum of GTIs [s]
ontime6	22025.517947316	Sum of GTIs [s]
ontime7	22031.999917984	Sum of GTIs [s]
l2events	141800	Number of level 2 events



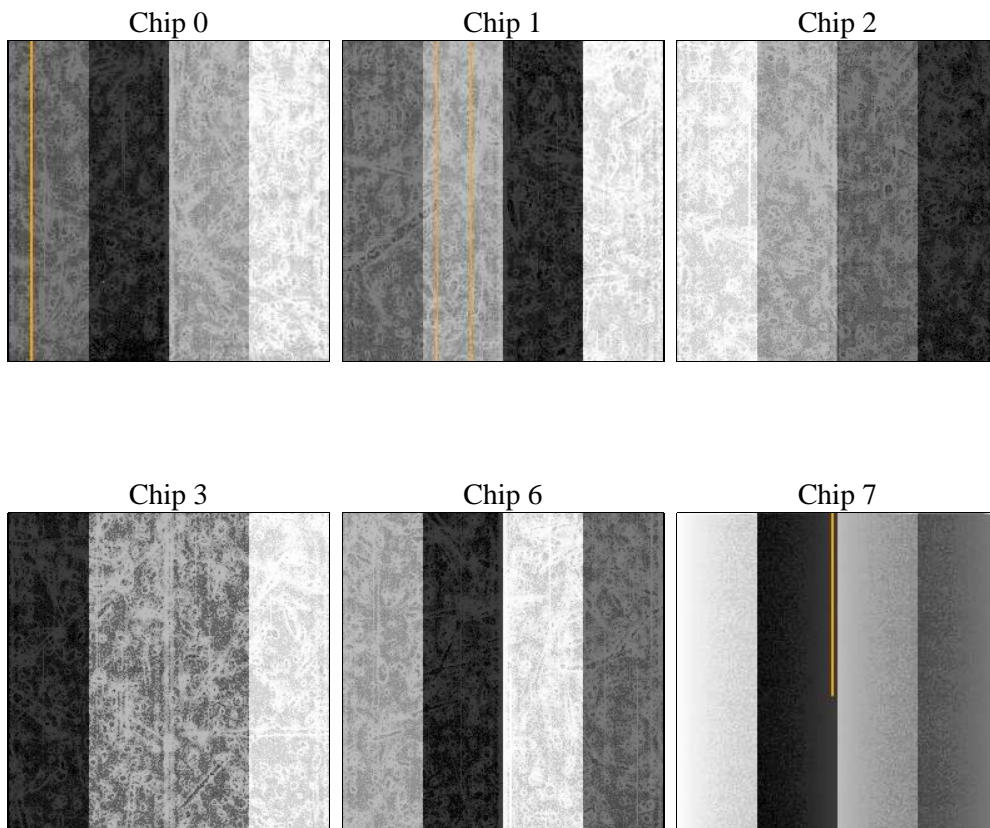
## 2 OBI

### 2.1 OBI

#### 2.1.1 Images



#### 2.1.2 Bias



### 2.1.3 Parameters

obi_num	0	Obi number	sched_exp_time	22000.000000	[s] Scheduled observation exposure time
ascdsver	8.4.3.1	Processing system revision	ontime	22031.999917984	Sum of GTIs [s]
caldsver	4.4.9	&#160	ontime0	22025.517937362	Sum of GTIs [s]
date	2012-04-15T15:56:57	Date and time of file creation	ontime1	22031.999917984	Sum of GTIs [s]
revision	3	Processing version of data	ontime2	22031.999917984	Sum of GTIs [s]
			ontime3	22031.999917984	Sum of GTIs [s]
			ontime6	22025.517947316	Sum of GTIs [s]
			ontime7	22031.999917984	Sum of GTIs [s]
			l1events	920390	Number of level 1 events

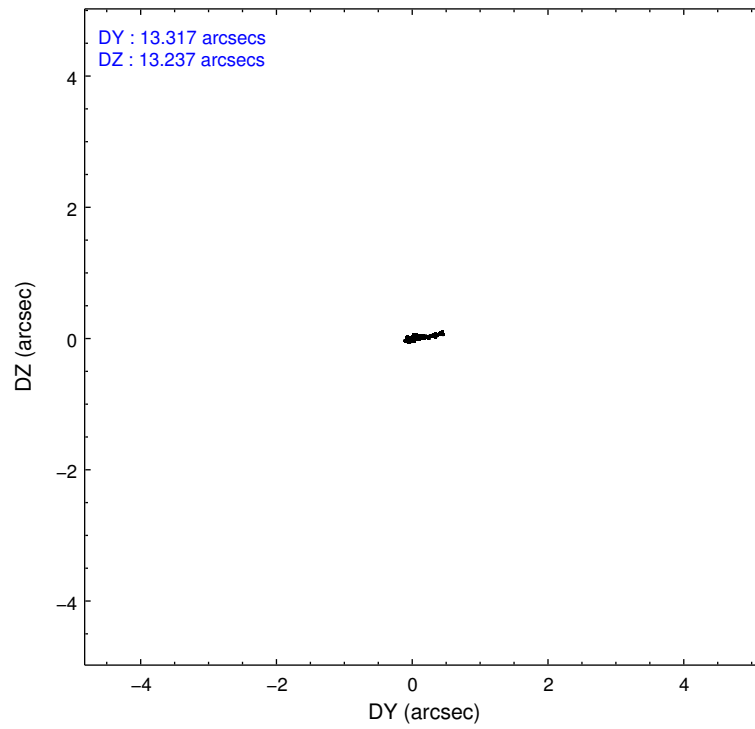
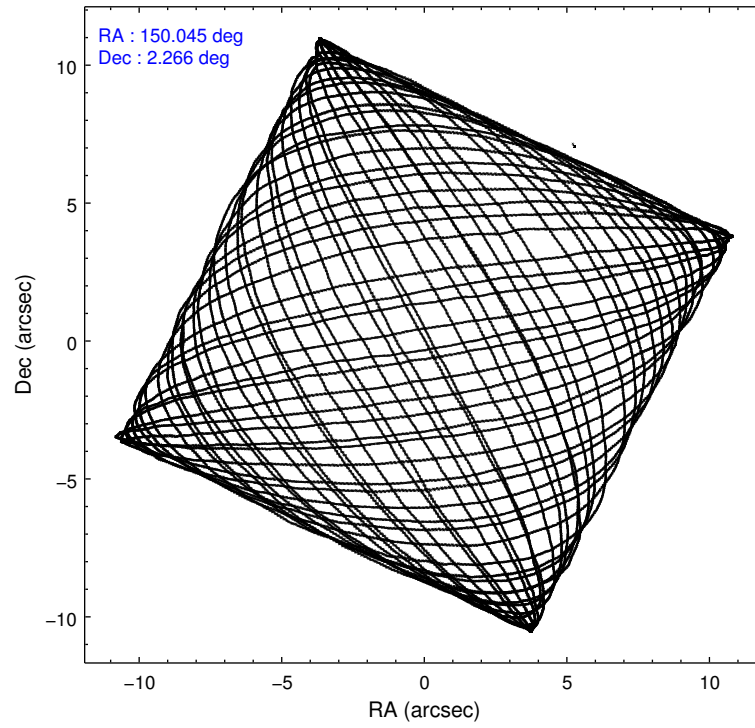
### 2.1.4 Events

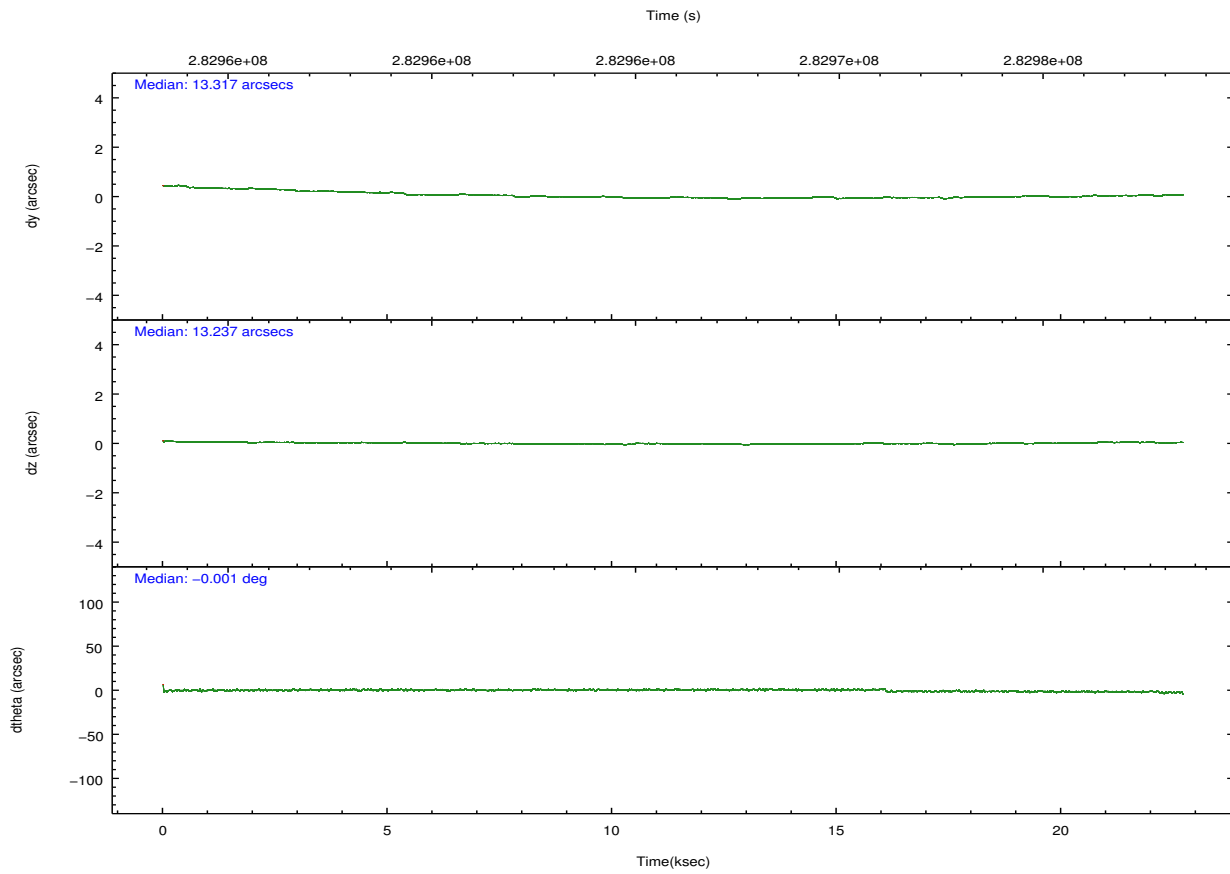
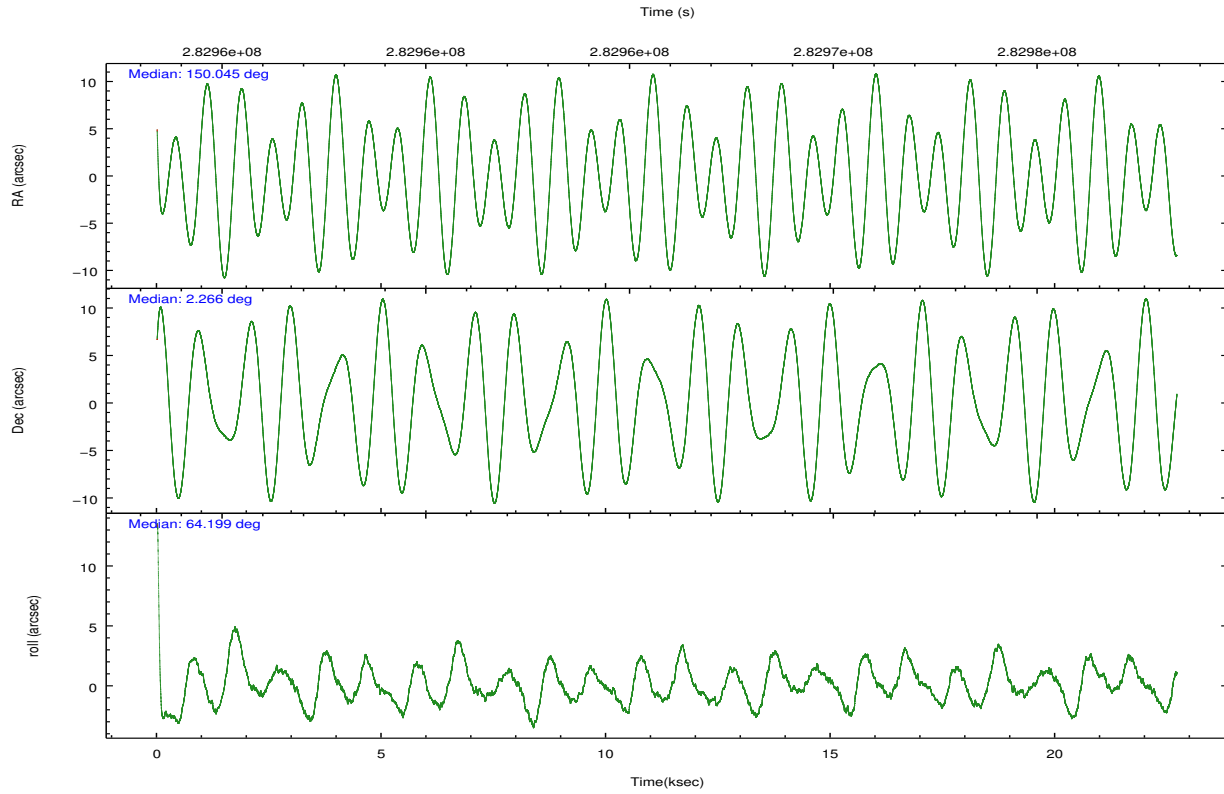
	ccd 0	ccd 1	ccd 2	ccd 3	ccd 6	ccd 7		ccd 0	ccd 1	ccd 2	ccd 3	ccd 6	ccd 7
level 1 events	141845	142752	155309	150025	158753	171706	grade 0 events	5485	6122	5531	5293	5601	7892
rejected events	126590	125761	140165	135422	142815	92441		3%	4%	3%	3%	3%	4%
rejected %	89%	88%	90%	90%	89%	53%	grade 1 events	75	71	88	97	81	204
								0%	0%	0%	0%	0%	0%
							grade 2 events	3515	3815	3519	3082	3440	15946
								2%	2%	2%	2%	2%	9%
							grade 3 events	1767	1851	1603	1627	1739	7248
								1%	1%	1%	1%	1%	4%
							grade 4 events	1560	1822	1702	1663	1711	7308
								1%	1%	1%	1%	1%	4%
							grade 5 events	5200	5819	4962	6010	6342	18060
								3%	4%	3%	4%	3%	10%
							grade 6 events	2931	3381	2792	2939	3448	40883
								2%	2%	1%	1%	2%	23%
							grade 7 events	121312	119871	135112	129314	136391	74165
								85%	83%	86%	86%	85%	43%

## 2.2 Compared Parameters

Parameter	Planned	Actual	Parameter	Planned	Actual
Instrument	ACIS	ACIS	Obspar format version number	7	7
Detector	ACIS-012367	ACIS-012367	Obspar file type	PREDICTED	ACTUAL
Grating	NONE	NONE	Obspar update status	NONE	UPDATED
Data mode	VFAINT	VFAINT	CCD I0 on	Y	Y
Observation mode	POINTING	POINTING	CCD I1 on	Y	Y
[deg] Pointing RA	150.047061	150.0449200728063	CCD I2 on	Y	Y
[deg] Pointing Dec	2.238713	2.266118223132816	CCD I3 on	Y	Y
[deg] Pointing Roll	63.999780	64.20856004731198	CCD S0 on	N	N
[mm] SIM focus pos	-0.782348	-0.7809083437167272	CCD S1 on	N	N
[mm] SIM defocus	0	0.001439871863259334	CCD S2 on	O1	Y
[mm] SIM translation stage pos	-233.592463	-233.5874344608287	CCD S3 on	O2	Y
[mm] SIM translation stage offset	0	-0.005018542100998502	CCD S4 on	N	N
[s] Observation start time (MET)	282955284.184000	282953962.29321	CCD S5 on	N	N
Observation start date	2006-12-19T22:40:19	2006-12-19T22:19:22	Number of optional ACIS chips dropped	0	0
[s] Observation end time (MET)	282977284.184000	282977929.86934	On-chip summing requested	N	N
Observation end date	2006-12-20T04:46:59	2006-12-20T04:58:49	Subarray requested	NONE	NONE
Read mode	TIMED	TIMED	Alternating exposures requested	N	N
			[s] Primary exposure time	0.000000	3.2

## 2.3 Aspect



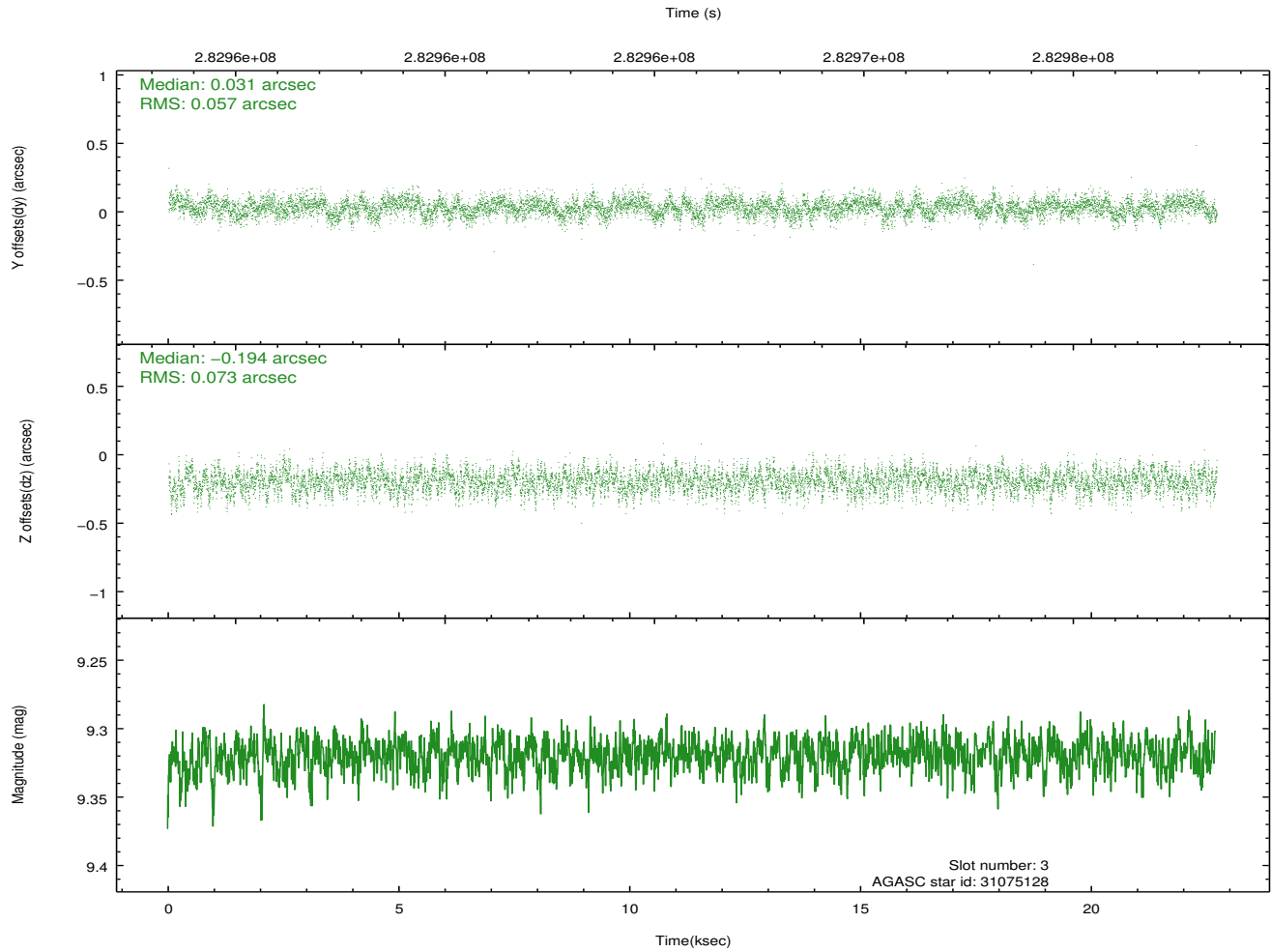
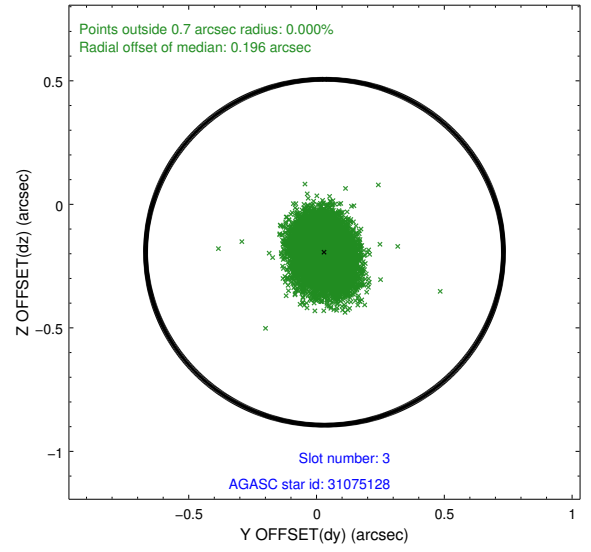
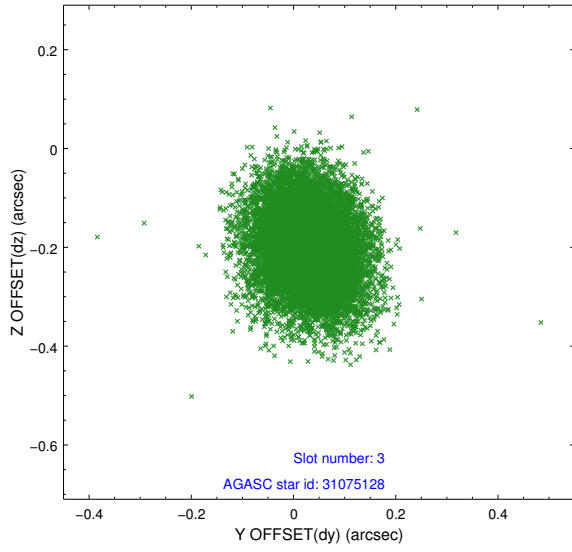


### Slot Statistics

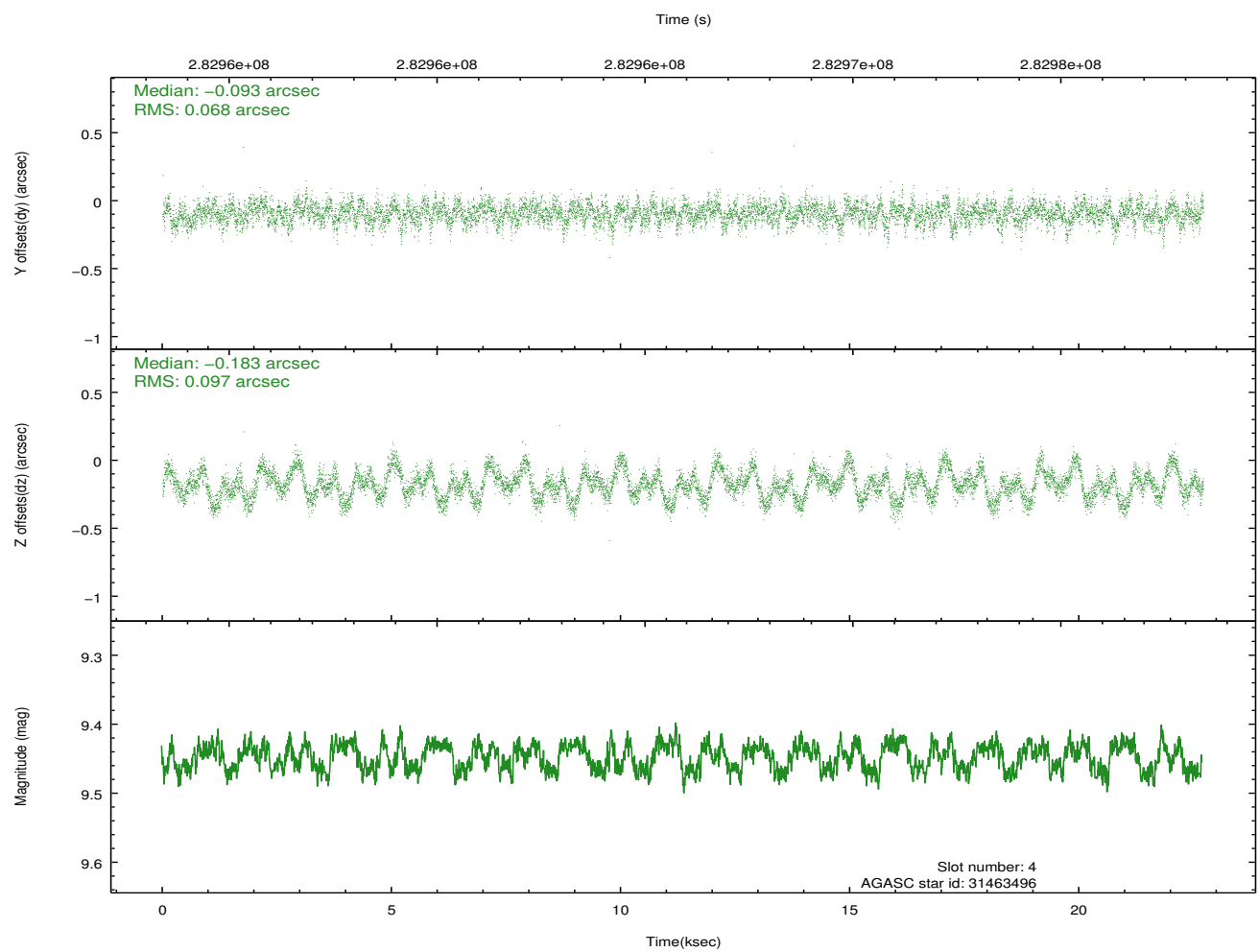
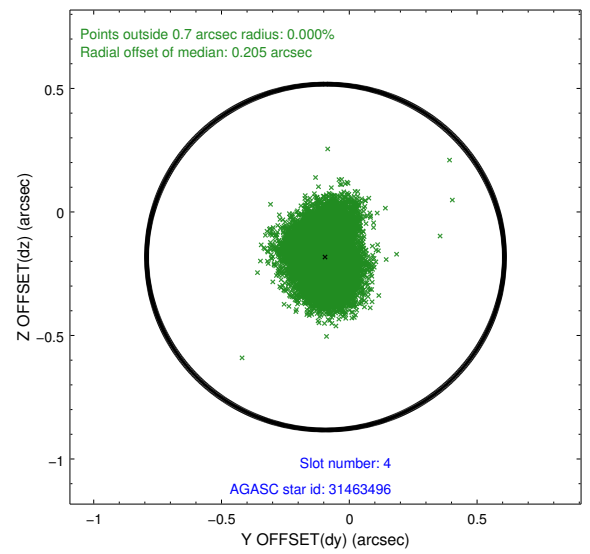
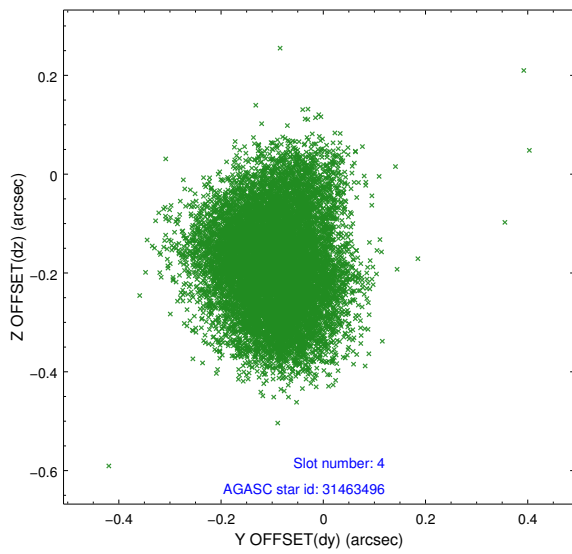
slot	status	id	mag	n_pts	med_dy	med_dz	dr1	dr2	ra	dec	mean_y	mean_z
0	FID	ACIS-I-1	7.24	5539	-0.004	0.003	0.013	0.024	0.000000	0.000000	926.11	-836.81
1	FID	ACIS-I-4	7.19	5538	0.234	0.023	0.012	0.021	0.000000	0.000000	2146.51	1062.93
2	FID	ACIS-I-5	7.23	5539	-0.328	0.045	0.010	0.019	0.000000	0.000000	-1821.99	1061.03
3	GUIDE	31075128	9.32	11067	0.031	-0.194	0.098	0.161	149.584516	2.364347	-322.39	1693.62
4	GUIDE	31463496	9.45	11070	-0.093	-0.183	0.127	0.202	149.845020	2.964001	2028.48	1797.98
5	GUIDE	31983224	9.48	11069	0.091	0.242	0.112	0.183	150.543757	1.869948	-408.43	-2187.68
6	GUIDE	31983336	8.59	11071	0.131	0.062	0.074	0.117	150.429924	2.291234	774.57	-1154.76
7	GUIDE	32374896	9.23	11066	-0.157	0.072	0.091	0.149	150.682269	2.512794	1889.32	-1620.34

## 2.4 Star Slots

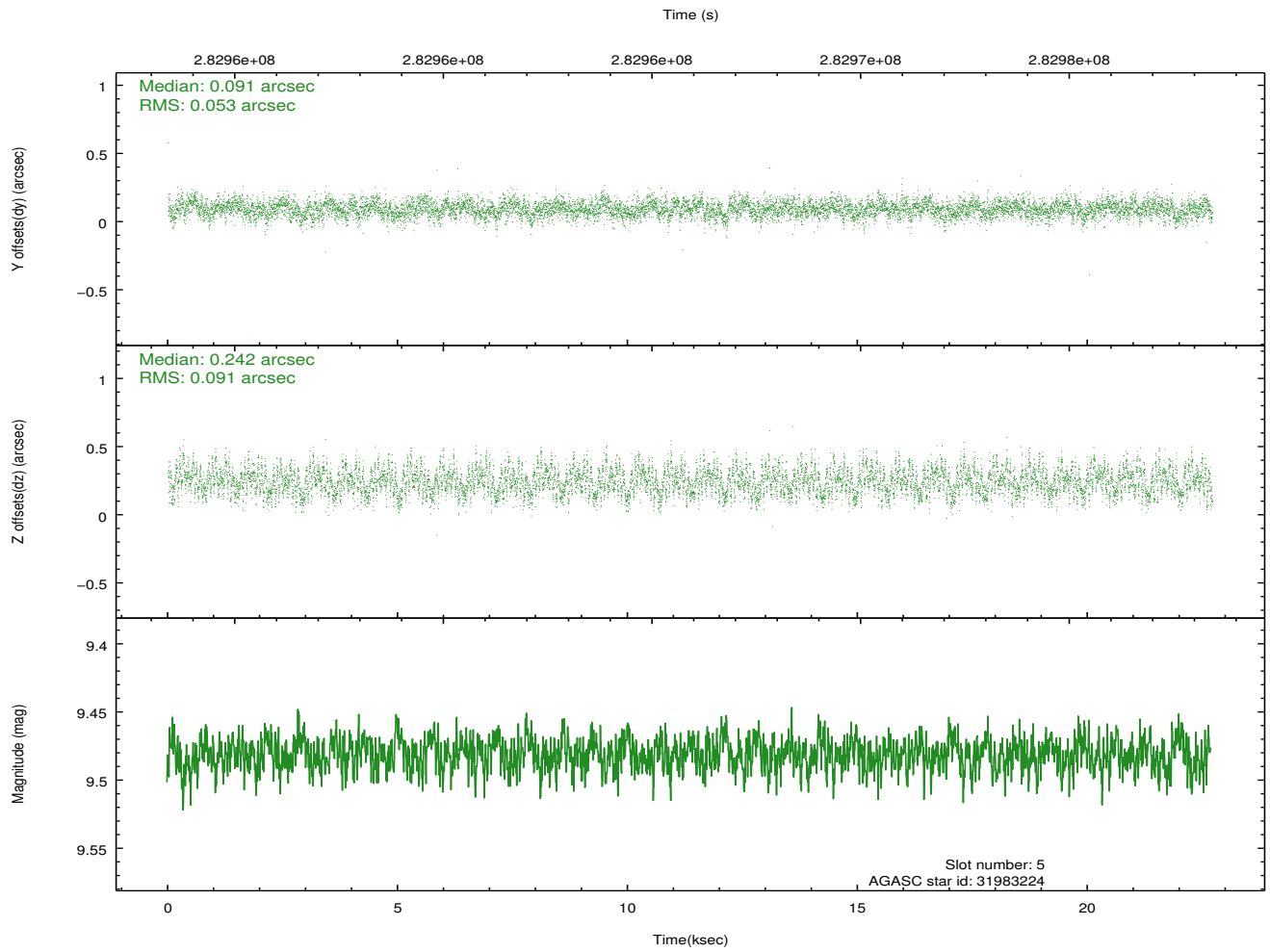
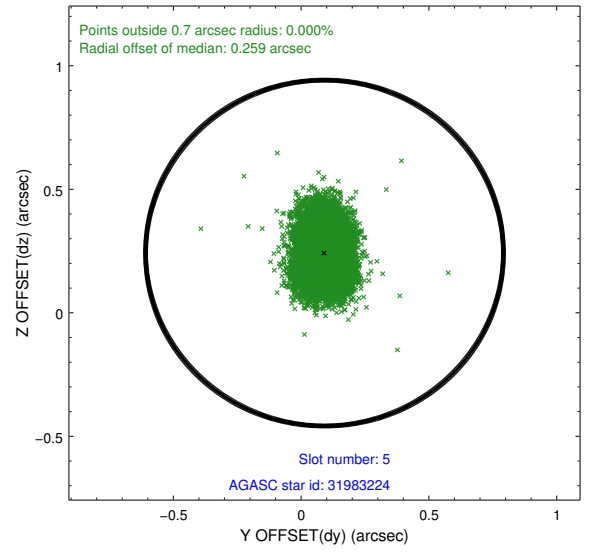
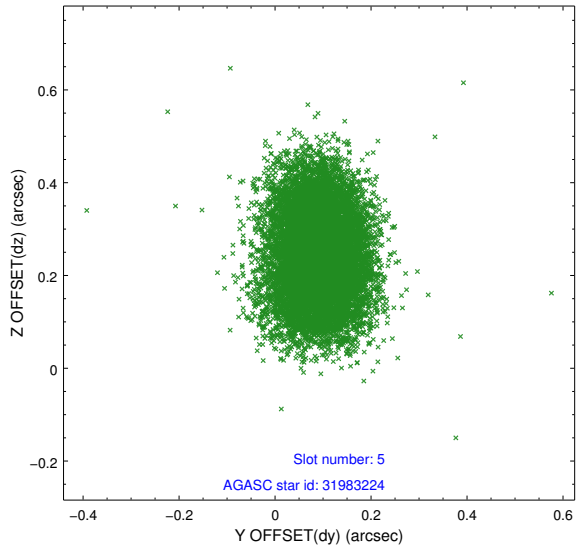
### 2.4.1 Slot 3



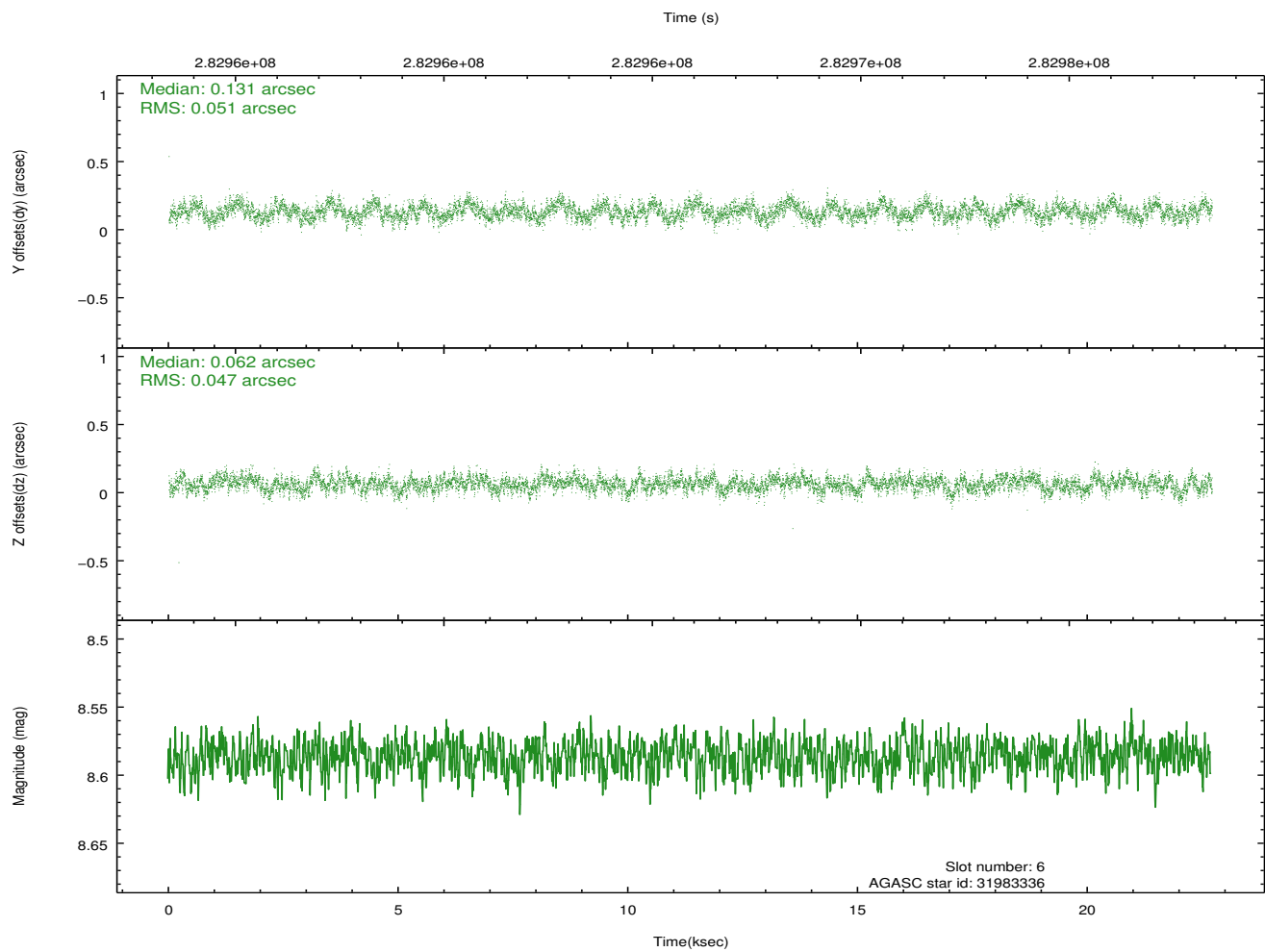
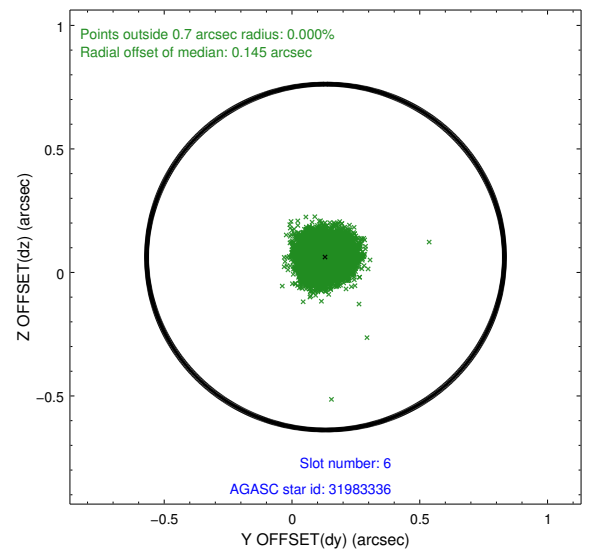
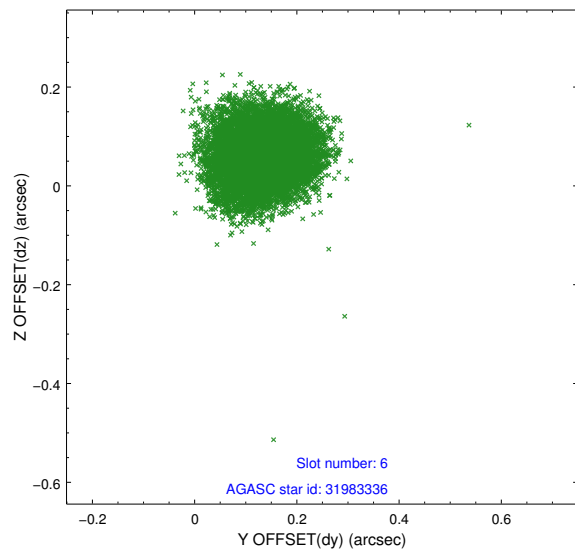
## 2.4.2 Slot 4



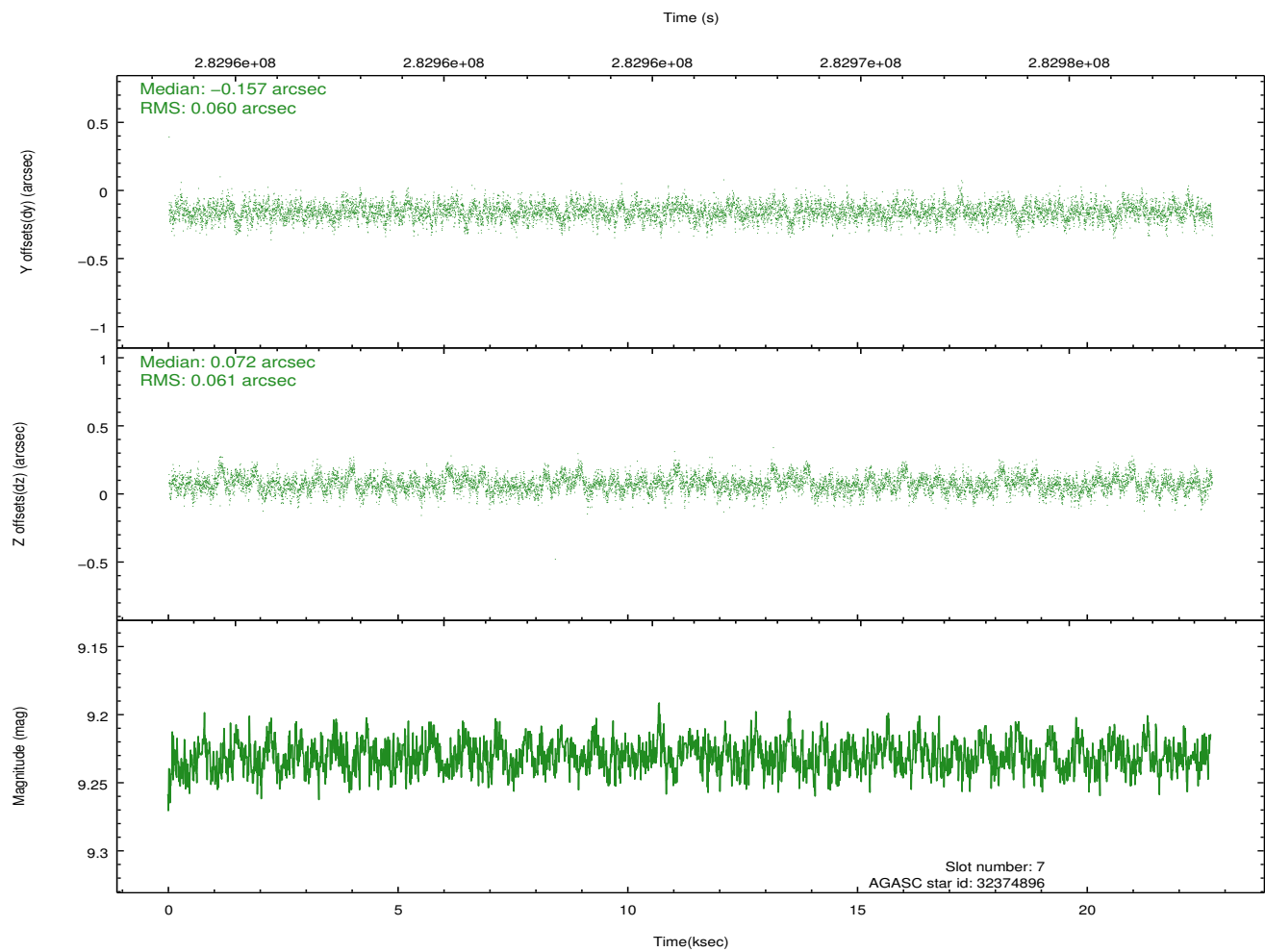
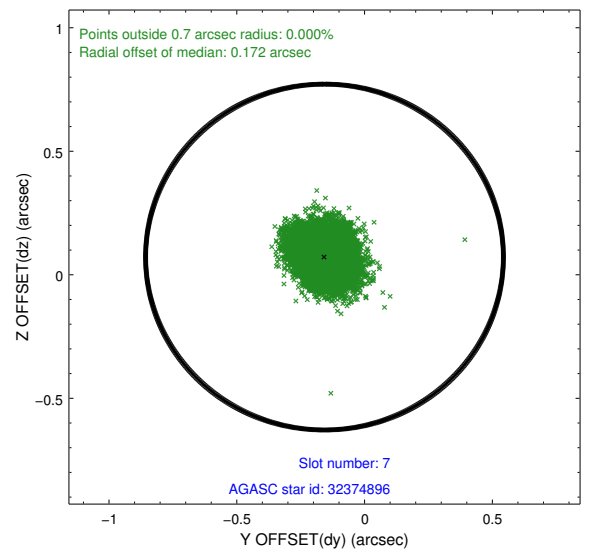
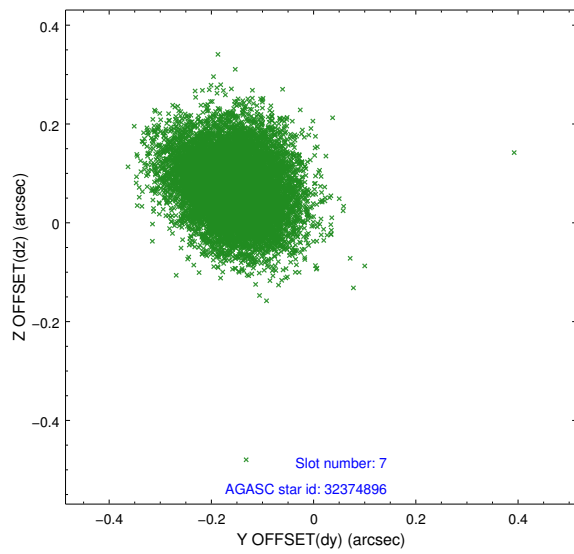
### 2.4.3 Slot 5



## 2.4.4 Slot 6

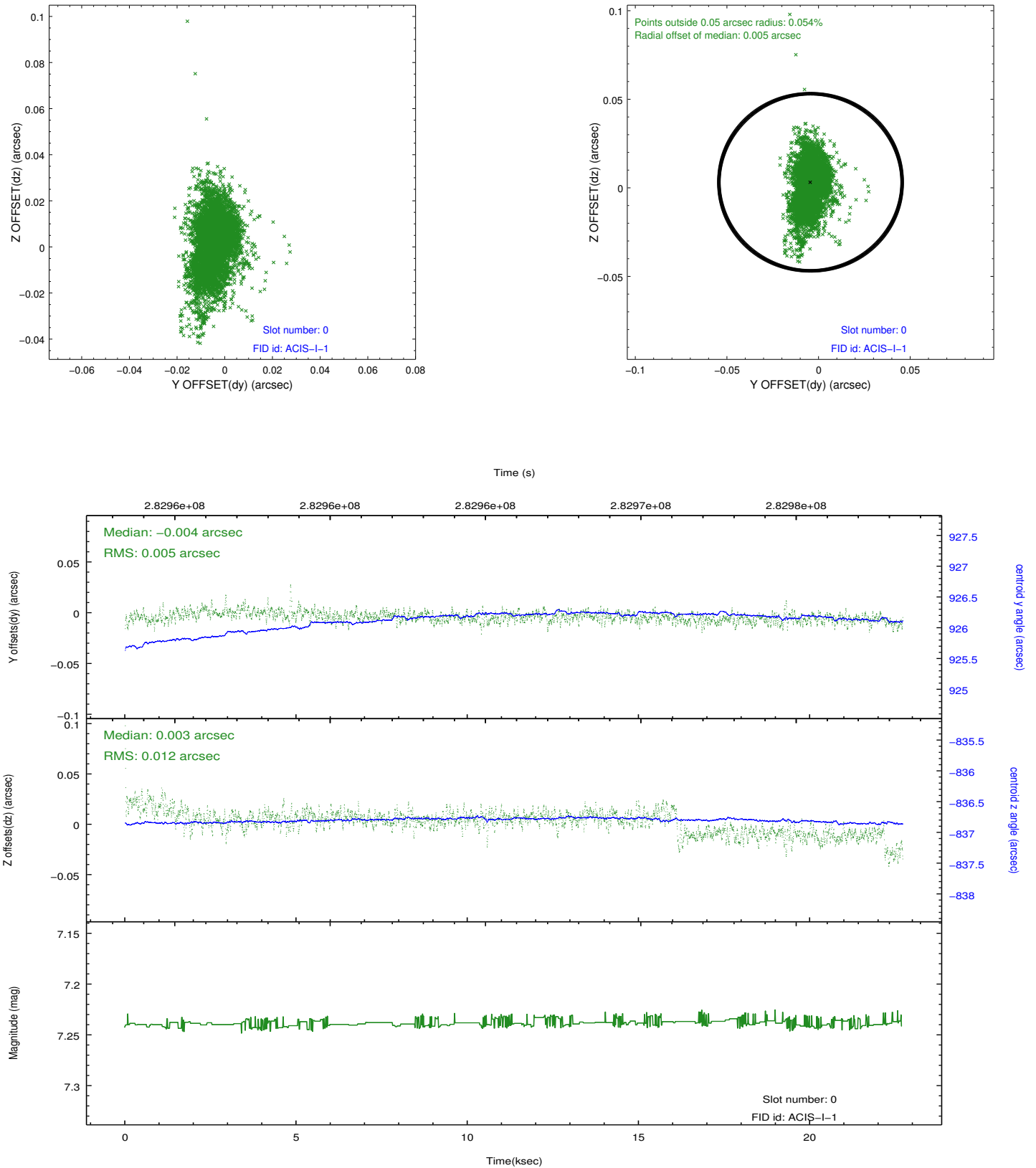


## 2.4.5 Slot 7

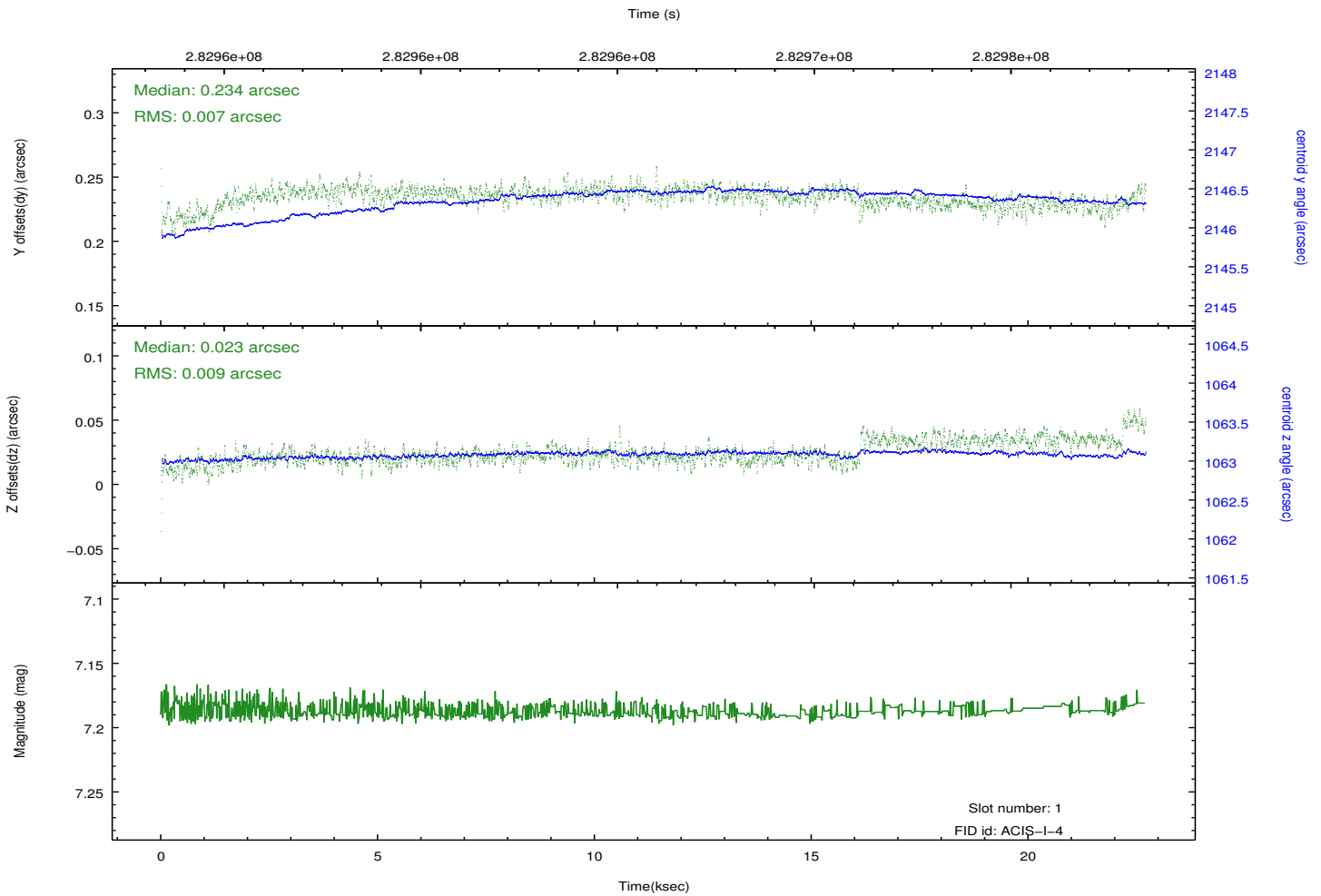
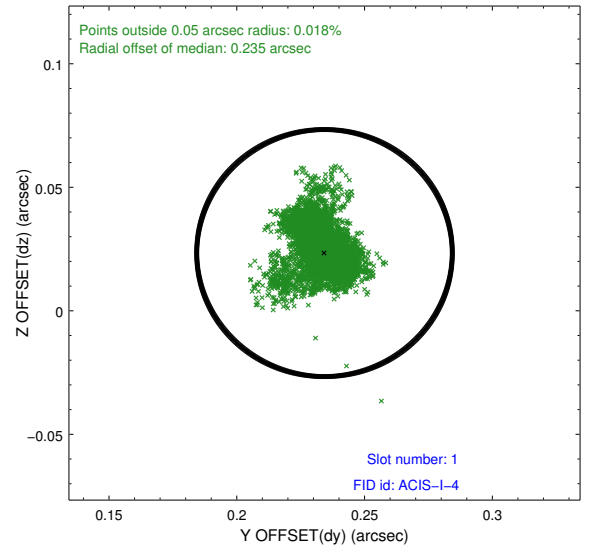
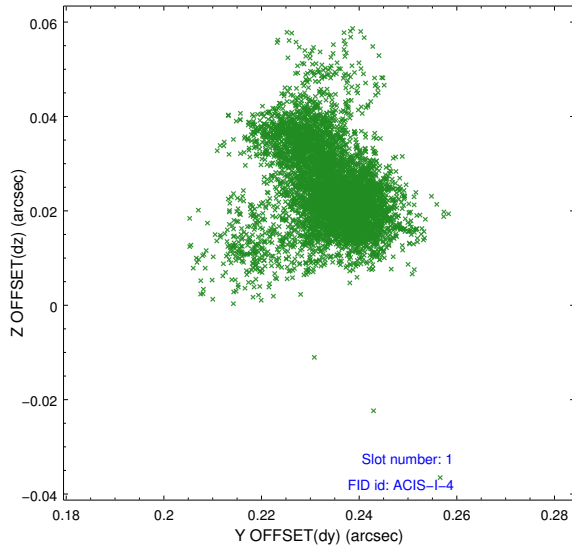


## 2.5 FID Slots

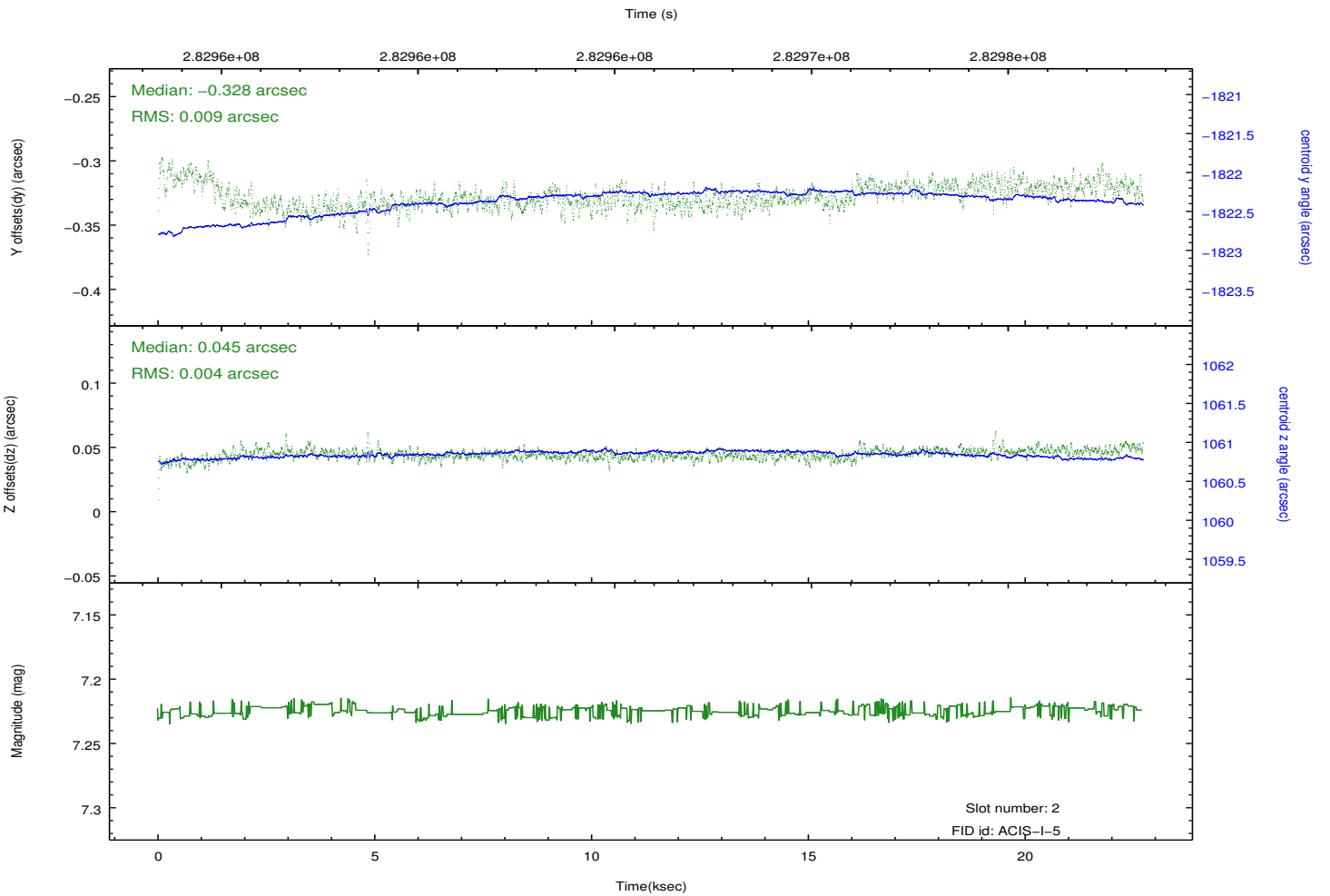
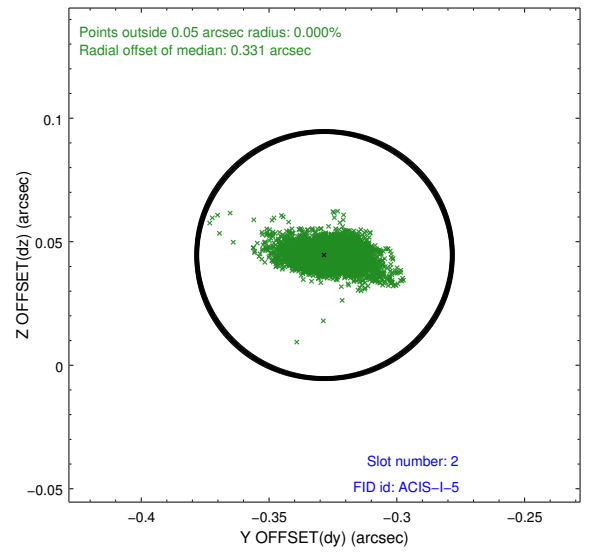
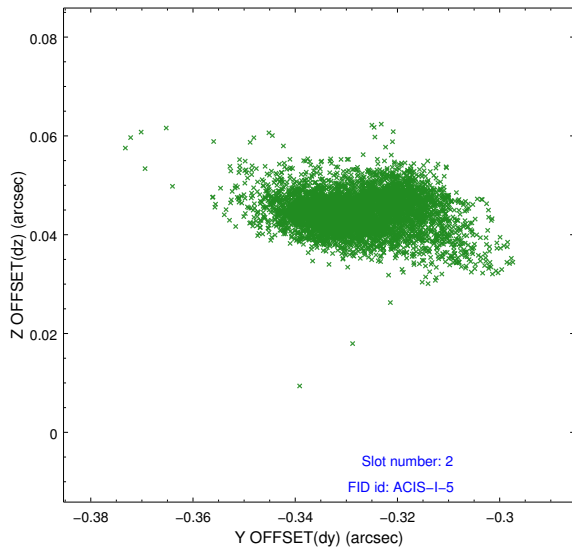
### 2.5.1 Slot 0



## 2.5.2 Slot 1



### 2.5.3 Slot 2



# A Summary

## A.1 Status

V&V Scientist	Jen Lauer
V&V Date (YYYY-MM-DD)	2012.04.18
V&V Edition	1
V&V Disposition and Status	OK
V&V Charge Time	22.0319999

## A.2 Comments