

# V&V Reference Report

## L2 ASCDS Version : 8.4.4

Observation 8177 - L2 Version 3  
Chandra X-Ray Center

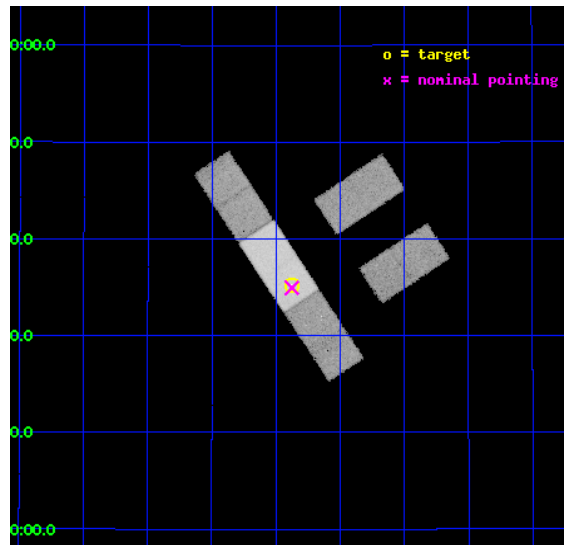
L2 Processing Date : Apr 22 2012

## Contents

<b>1</b>	<b>Front</b>	<b>2</b>
<b>2</b>	<b>OBI</b>	<b>3</b>
2.1	OBI . . . . .	3
2.1.1	Images . . . . .	3
2.1.2	Bias . . . . .	3
2.1.3	Parameters . . . . .	4
2.1.4	Events . . . . .	4
2.2	Compared Parameters . . . . .	5
2.3	Aspect . . . . .	6
2.4	Star Slots . . . . .	9
2.4.1	Slot 3 . . . . .	9
2.4.2	Slot 4 . . . . .	10
2.4.3	Slot 5 . . . . .	11
2.4.4	Slot 6 . . . . .	12
2.4.5	Slot 7 . . . . .	13
2.5	FID Slots . . . . .	14
2.5.1	Slot 0 . . . . .	14
2.5.2	Slot 1 . . . . .	15
2.5.3	Slot 2 . . . . .	16
<b>A</b>	<b>Summary</b>	<b>17</b>
A.1	Status . . . . .	17
A.2	Comments . . . . .	17

# 1 Front

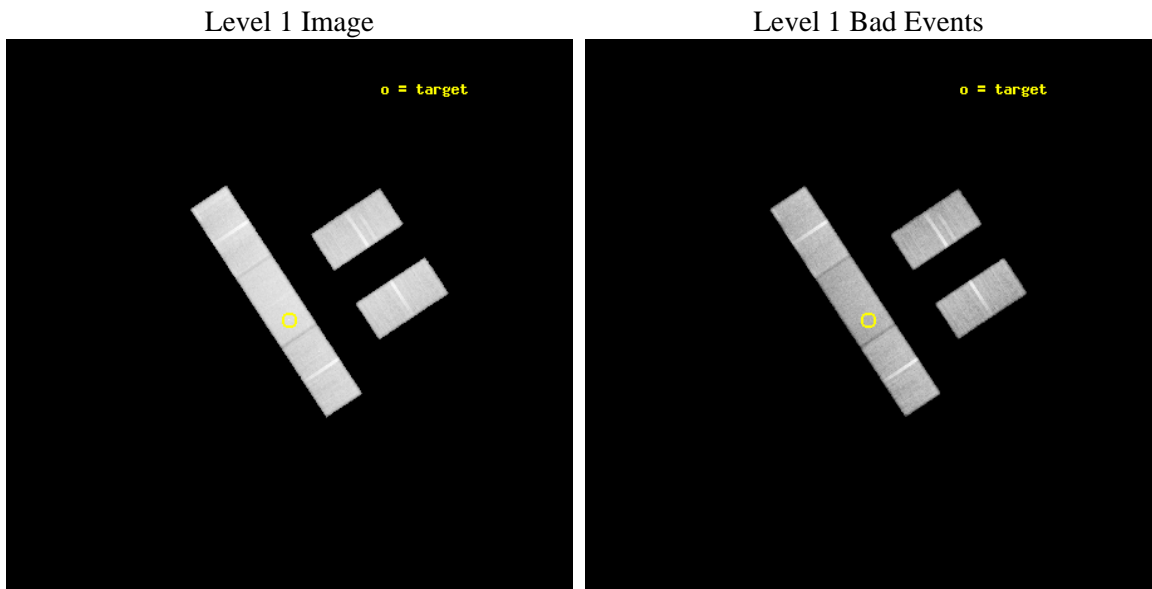
seq_num	600614	Sequence number
obs_id	8177	Observation id
title	Measuring the Dust-to-gas Ratio of High Redshift Galaxies	Proposal
observer	Prof. Xinyu Dai	Principal investigator
object	FBQ0951+2635	Source name
dtcycle	0	&#160
cycle	P	events from which exps? Prim/Second/Both
ra_targ	147.844167	Observer's specified target RA [deg]
dec_targ	26.58725	Observer's specified target Dec [deg]
ra_nom	147.84400263568	Nominal RA [deg]
dec_nom	26.582407911102	Nominal Dec [deg]
roll_nom	236.5521956993	Nominal Roll [deg]
revision	3	Processing version of data
ontime	35069.299754143	Sum of GTIs [s]
livetime	34242.642088661	Livetime [s]
ontime2	35069.299754143	Sum of GTIs [s]
ontime3	35067.558734	Sum of GTIs [s]
ontime6	35069.299754143	Sum of GTIs [s]
ontime7	35069.299754143	Sum of GTIs [s]
ontime8	35065.817704022	Sum of GTIs [s]
l2events	169065	Number of level 2 events



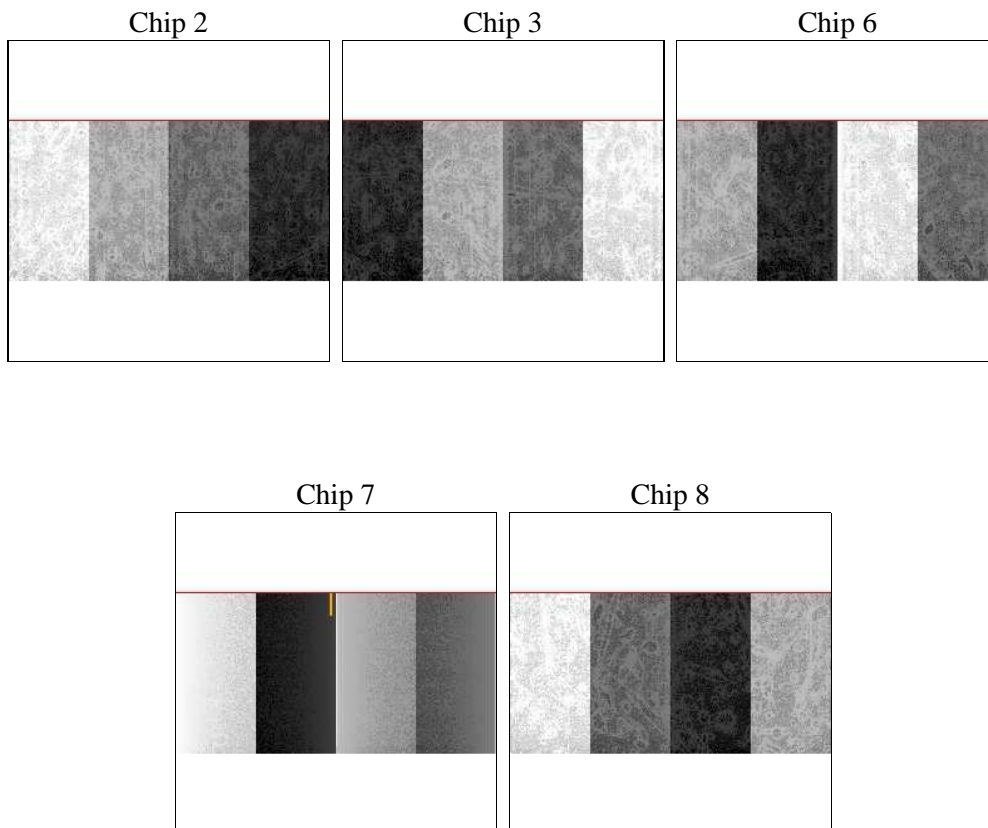
## 2 OBI

### 2.1 OBI

#### 2.1.1 Images



#### 2.1.2 Bias



### 2.1.3 Parameters

obi_num	0	Obi number	sched_exp_time	35000.000000	[s] Scheduled observation exposure time
ascdsver	8.4.4	Processing system revision	ontime	35069.299754143	Sum of GTIs [s]
caldsver	4.4.9	&#160	ontime2	35069.299754143	Sum of GTIs [s]
date	2012-04-22T05:21:28	Date and time of file creation	ontime3	35067.558734	Sum of GTIs [s]
revision	3	Processing version of data	ontime6	35069.299754143	Sum of GTIs [s]
			ontime7	35069.299754143	Sum of GTIs [s]
			ontime8	35065.817704022	Sum of GTIs [s]
			l1events	990600	Number of level 1 events

### 2.1.4 Events

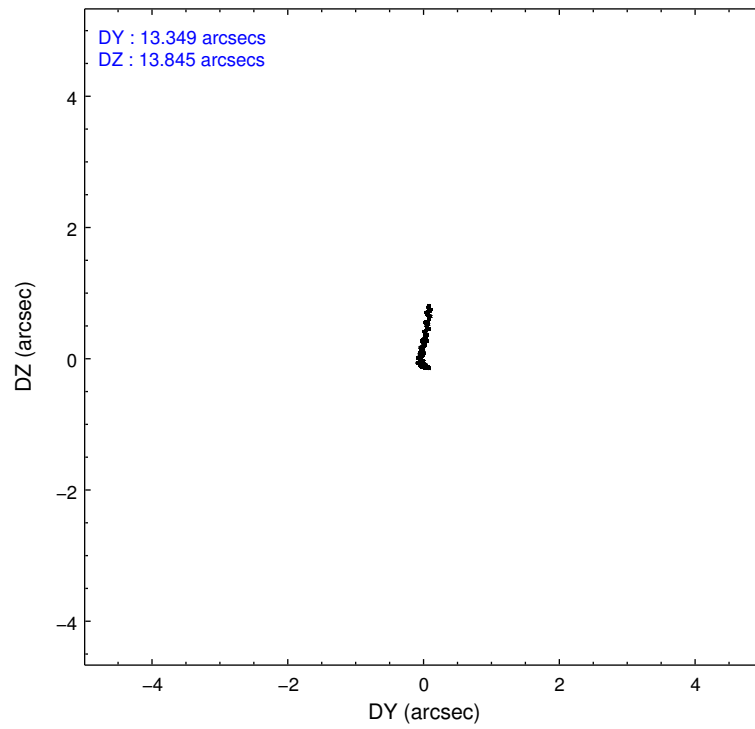
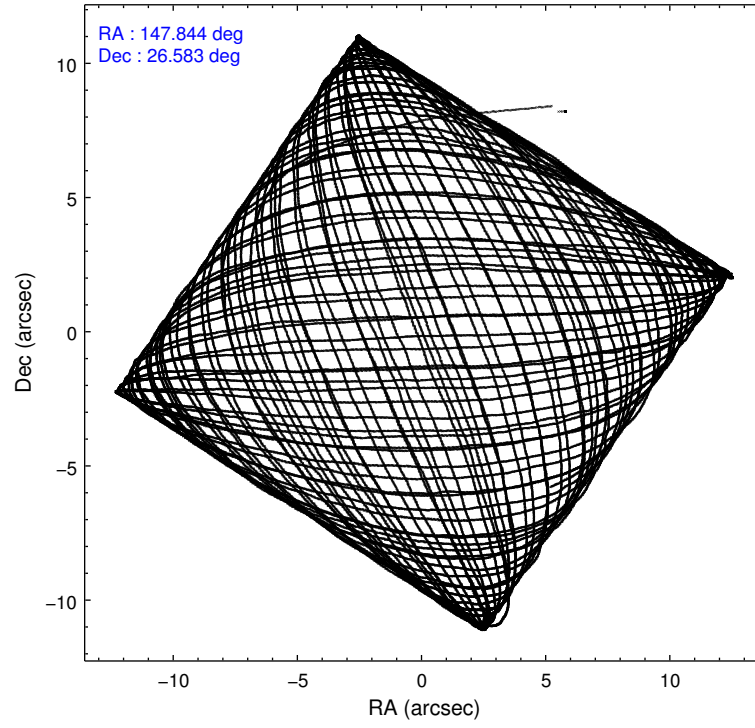
	ccd 2	ccd 3	ccd 6	ccd 7	ccd 8
level 1 events	171216	173316	182811	232847	230410
rejected events	150778	152692	161284	134723	181205
rejected %	88%	88%	88%	57%	78%

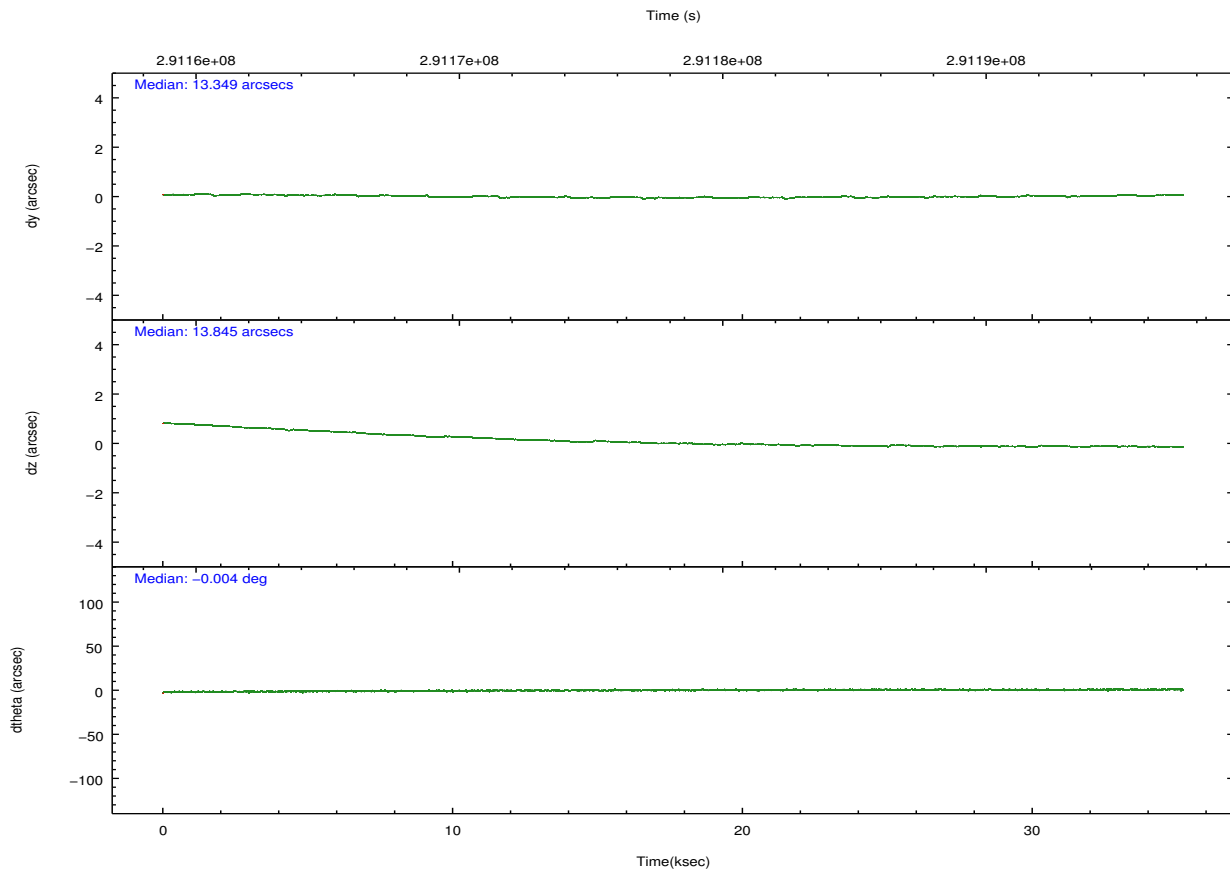
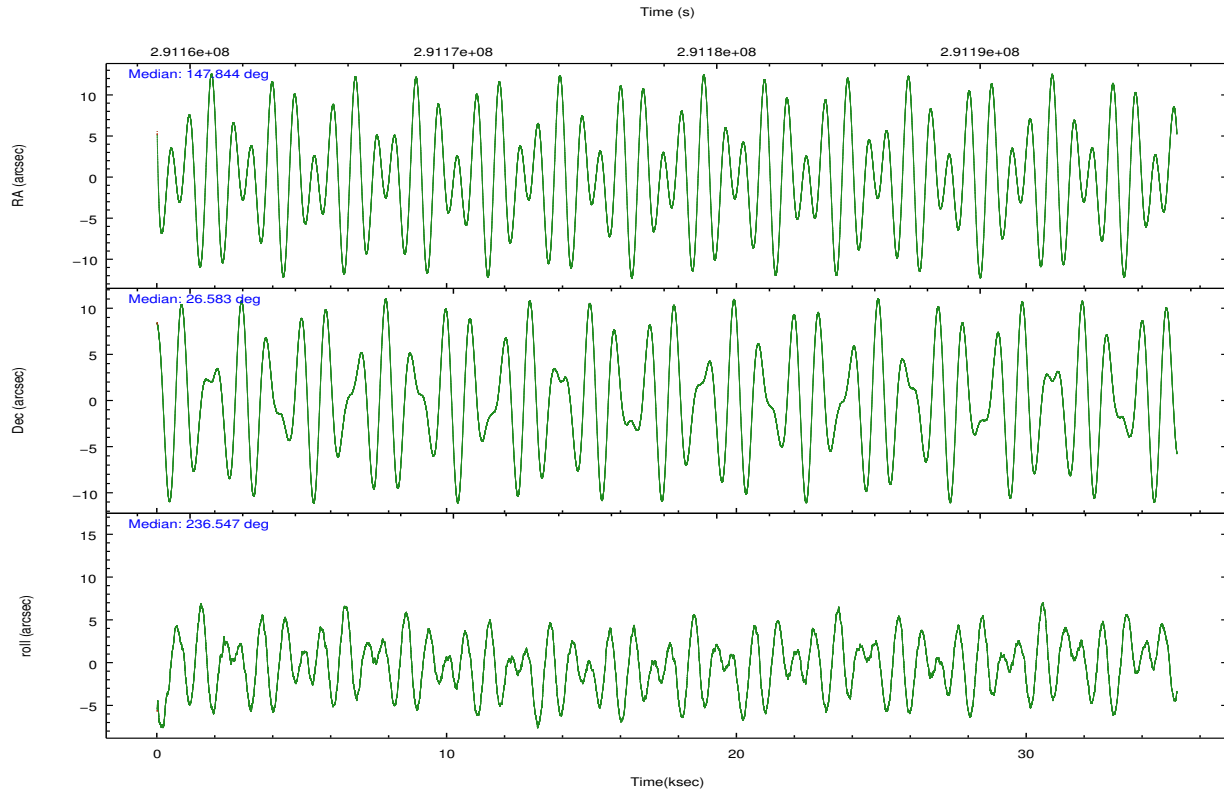
	ccd 2	ccd 3	ccd 6	ccd 7	ccd 8
grade 0 events	8523	8615	8149	8851	14804
	4%	4%	4%	3%	6%
grade 1 events	85	86	70	249	121
	0%	0%	0%	0%	0%
grade 2 events	3987	3828	4342	20024	10838
	2%	2%	2%	8%	4%
grade 3 events	2315	2423	2353	9419	5487
	1%	1%	1%	4%	2%
grade 4 events	2277	2226	2393	9135	5049
	1%	1%	1%	3%	2%
grade 5 events	6296	7635	8006	22051	10328
	3%	4%	4%	9%	4%
grade 6 events	3337	3536	4290	50705	13028
	1%	2%	2%	21%	5%
grade 7 events	144396	144967	153208	112413	170755
	84%	83%	83%	48%	74%

## 2.2 Compared Parameters

Parameter	Planned	Actual	Parameter	Planned	Actual
Instrument	ACIS	ACIS	Obspar format version number	7	7
Detector	ACIS-23678	ACIS-23678	Obspar file type	PREDICTED	ACTUAL
Grating	NONE	NONE	Obspar update status	NONE	UPDATED
Data mode	VFAINT	VFAINT	Number of optional ACIS chips dropped	0	0
Observation mode	POINTING	POINTING	On-chip summing requested	N	N
[deg] Pointing RA	147.845420	147.8440026356844	Subarray requested	CUSTOM	1/2
[deg] Pointing Dec	26.609718	26.58240791110238	Subarray start row	257	257
[deg] Pointing Roll	236.394926	236.5521956992998	Subarray row count	512	512
[mm] SIM focus pos	-0.684267	-0.6828225247311905	Alternating exposures requested	N	N
[mm] SIM defocus	0	0.001444936568705701	[s] Primary exposure time	0.000000	1.7
[mm] SIM translation stage pos	-190.132523	-190.1400660498719			
[mm] SIM translation stage offset	0	0.00754346686406393			
[s] Observation start time (MET)	291160713.184000	291159956.88269			
Observation start date	2007-03-24T21:57:28	2007-03-24T21:45:56			
[s] Observation end time (MET)	291195713.184000	291196315.68442			
Observation end date	2007-03-25T07:40:48	2007-03-25T07:51:55			
Read mode	TIMED	TIMED			

## 2.3 Aspect



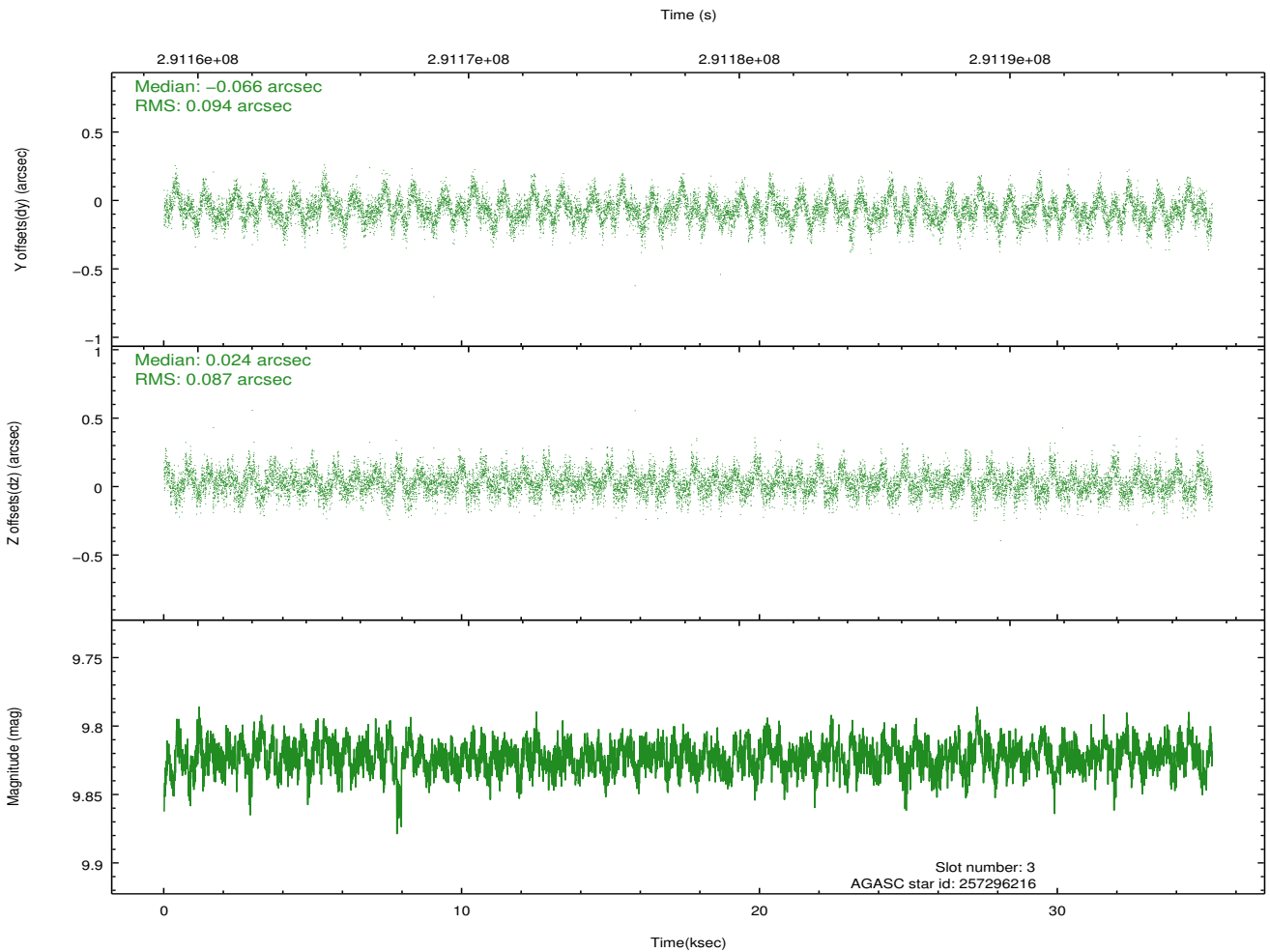
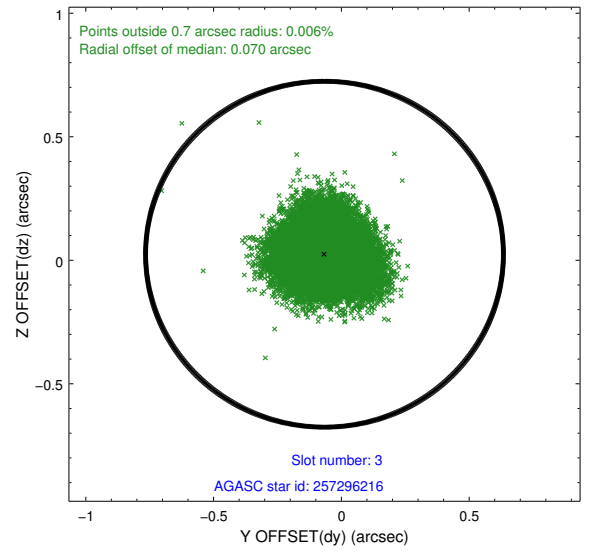
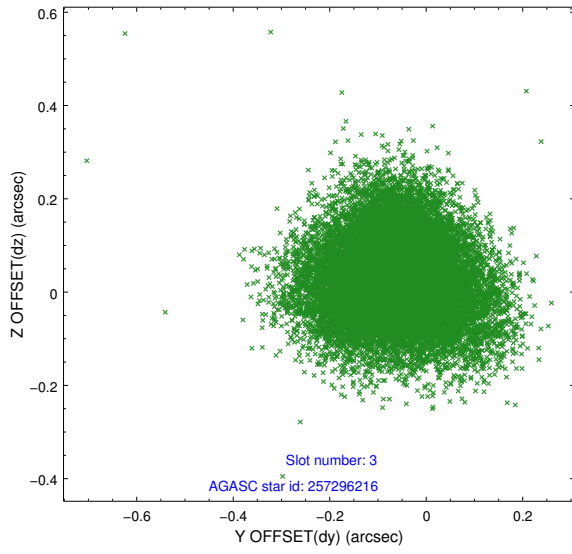


### Slot Statistics

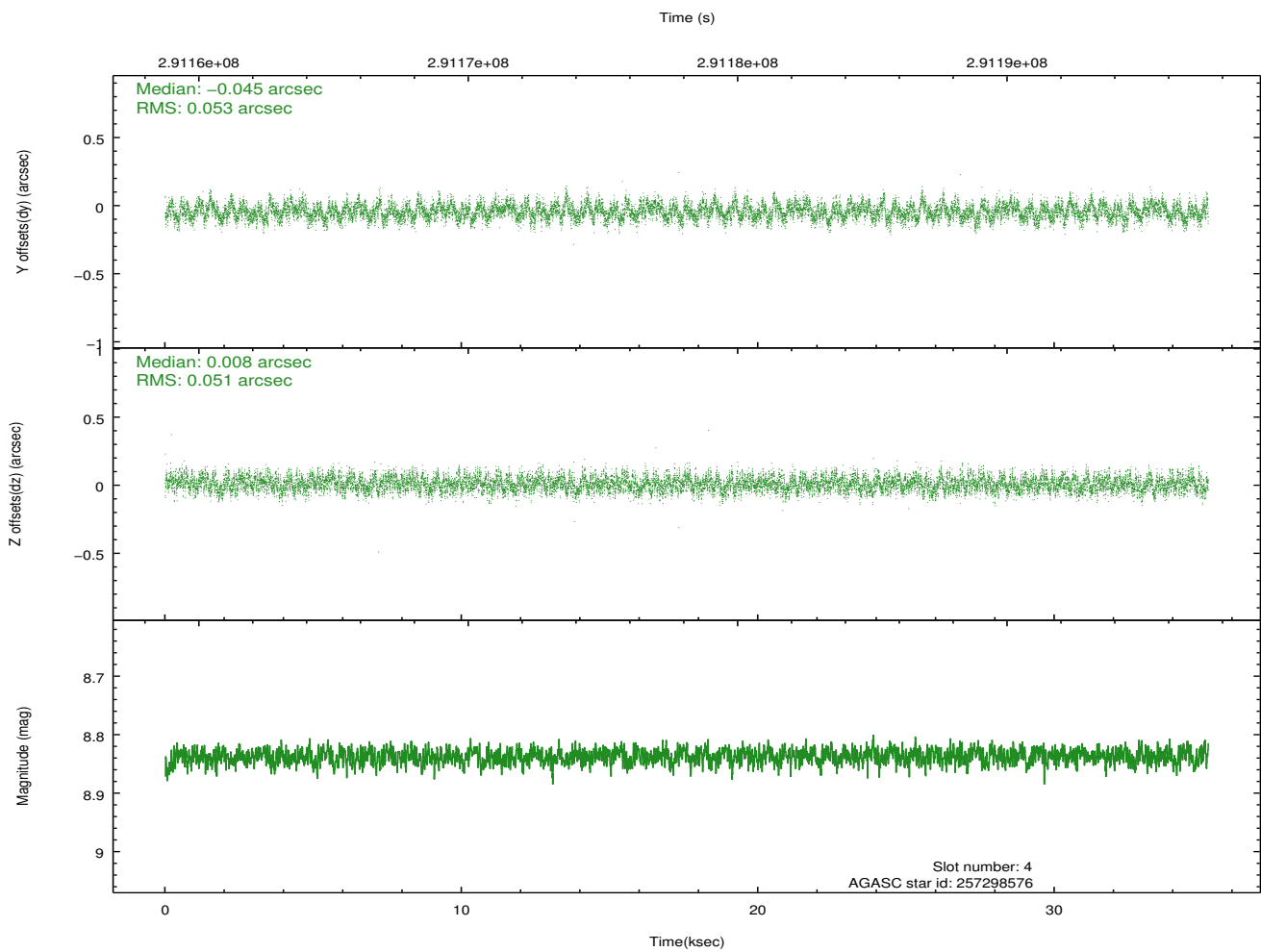
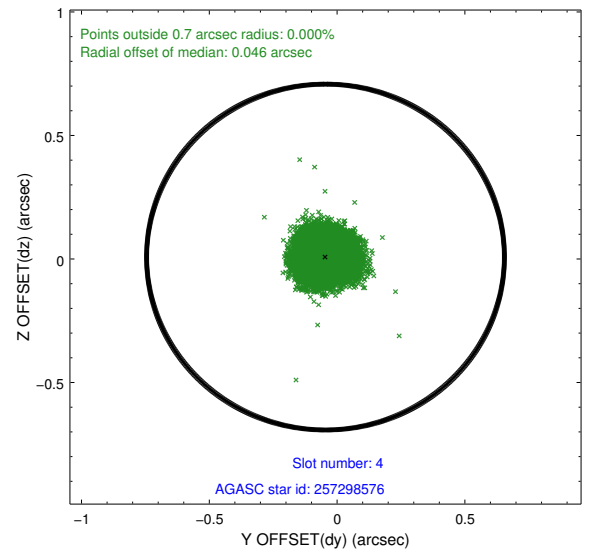
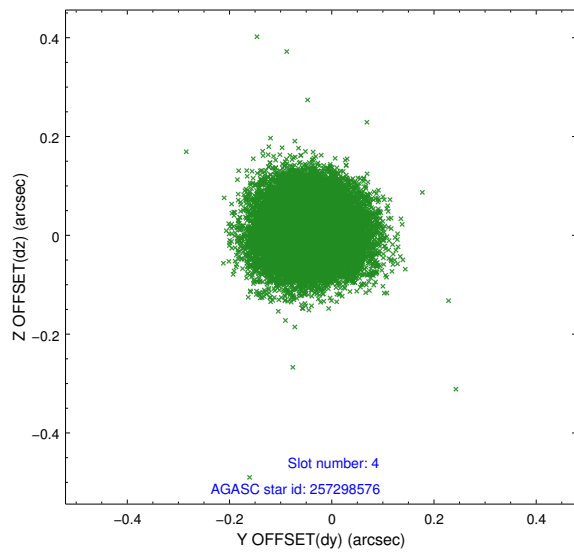
slot	status	id	mag	n_pts	med_dy	med_dz	dr1	dr2	ra	dec	mean_y	mean_z
0	FID	ACIS-S-2	7.10	8583	-0.042	-0.062	0.010	0.020	0.000000	0.000000	-766.31	-1735.39
1	FID	ACIS-S-4	7.20	8580	0.184	0.037	0.008	0.015	0.000000	0.000000	2147.16	173.16
2	FID	ACIS-S-5	7.23	8582	-0.172	0.034	0.010	0.018	0.000000	0.000000	-1819.24	166.86
3	GUIDE	257296216	9.82	17149	-0.066	0.024	0.137	0.218	147.809801	27.203451	-1716.31	-1277.96
4	GUIDE	257298576	8.84	17154	-0.045	0.008	0.079	0.124	147.531390	26.836991	-123.71	-1293.63
5	GUIDE	257427192	9.32	17151	0.166	-0.105	0.117	0.180	147.930776	26.313194	737.03	820.25
6	GUIDE	257428168	9.21	17149	-0.109	-0.007	0.093	0.150	148.467746	26.292370	-164.12	2302.74
7	GUIDE	257302264	9.61	17146	0.050	0.076	0.097	0.163	147.580685	25.959702	2422.86	581.91

## 2.4 Star Slots

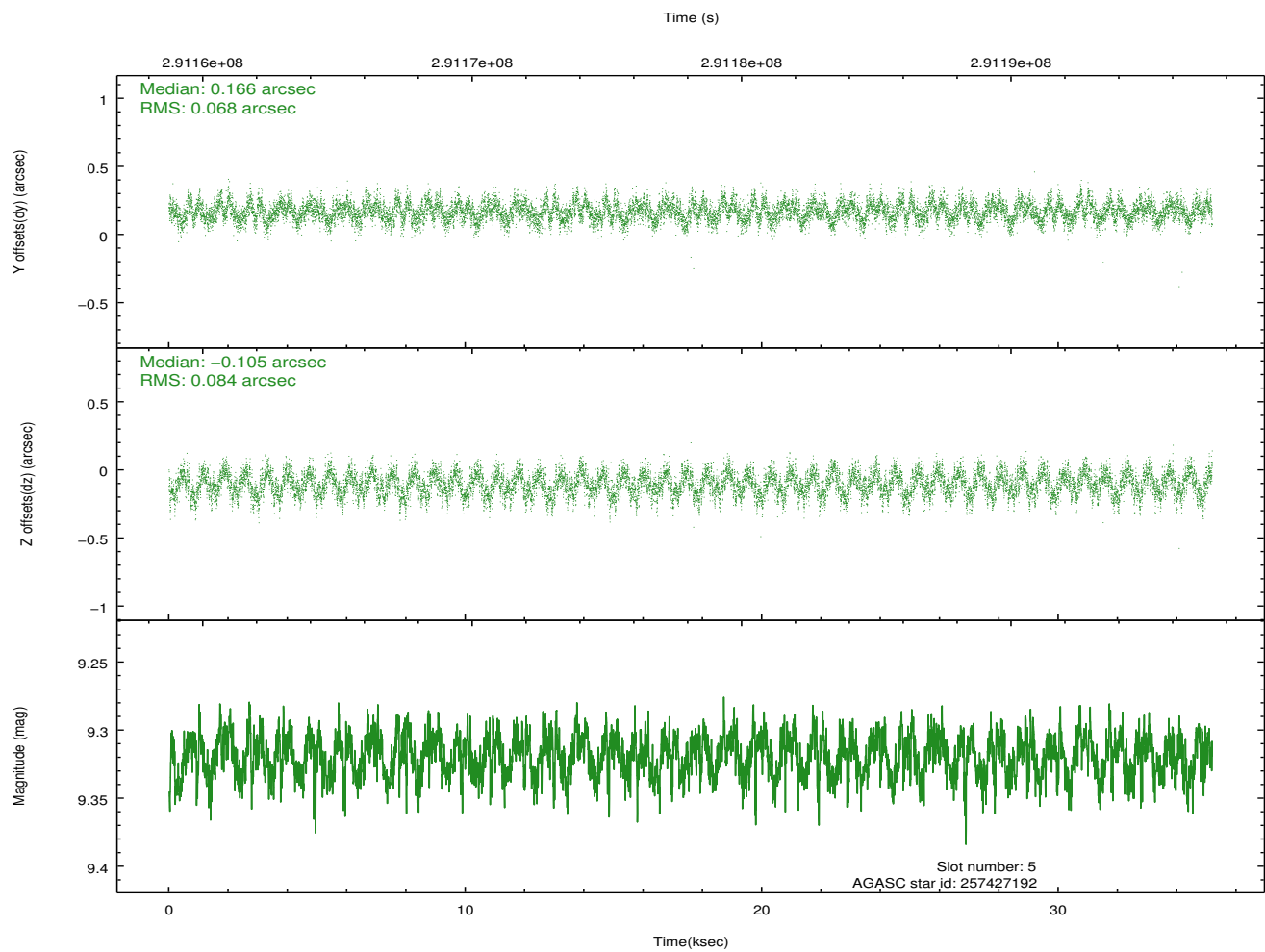
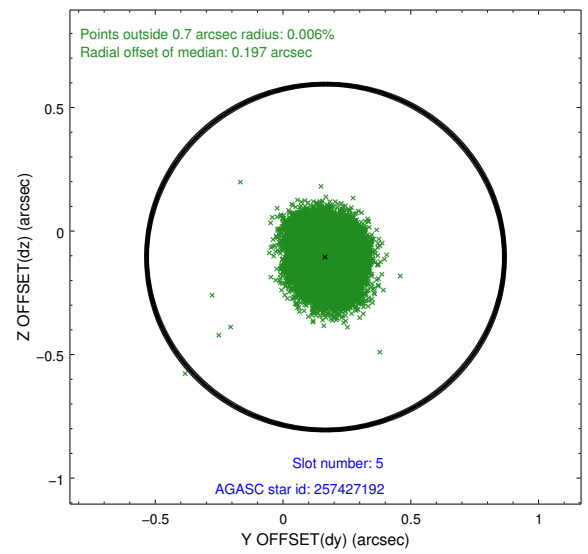
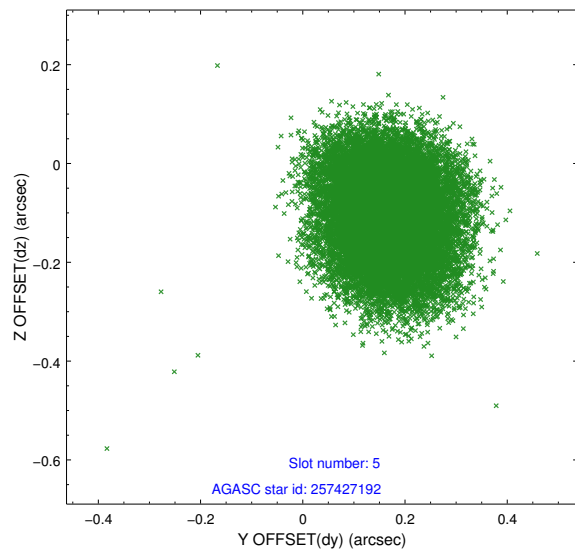
### 2.4.1 Slot 3



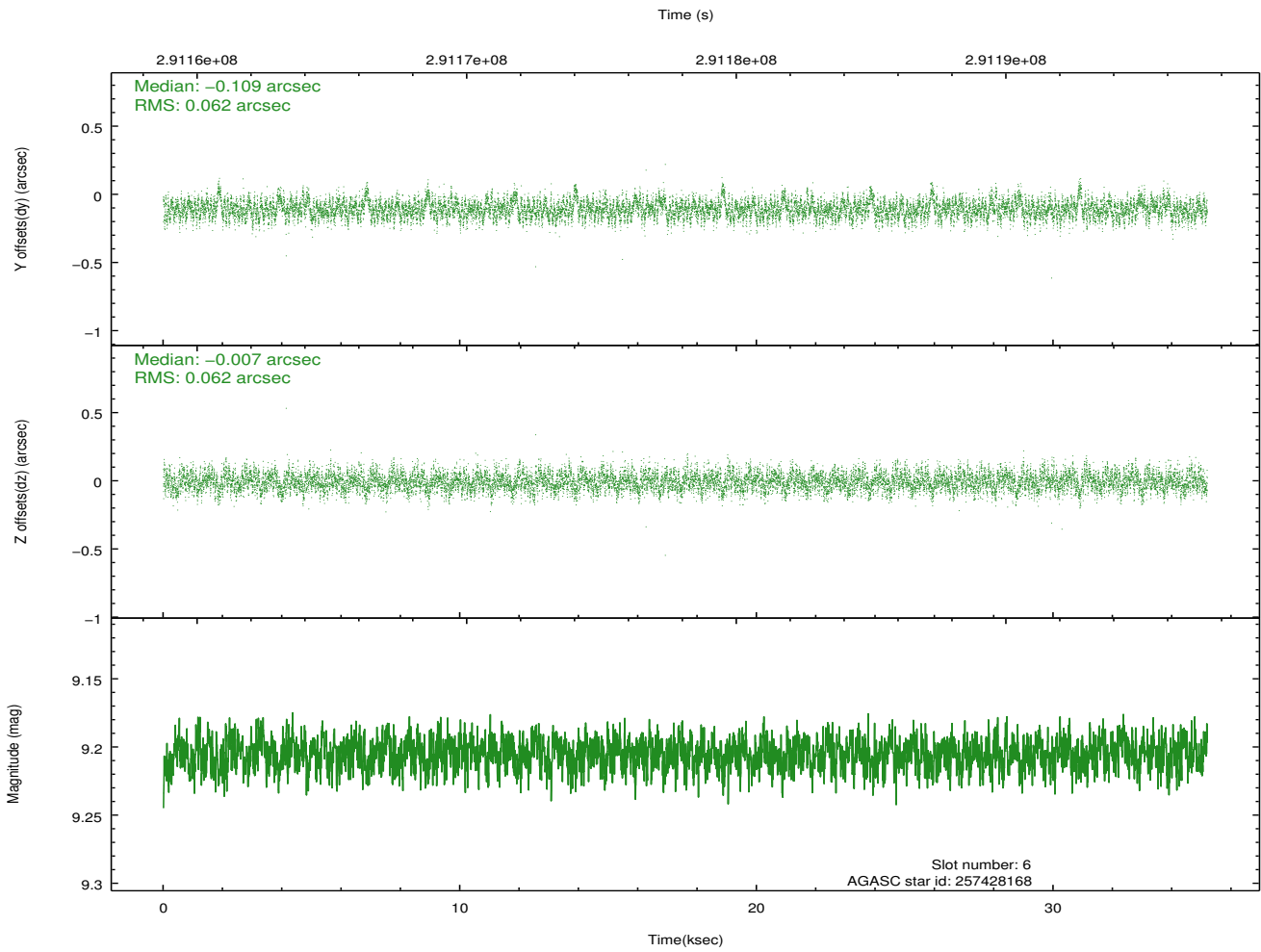
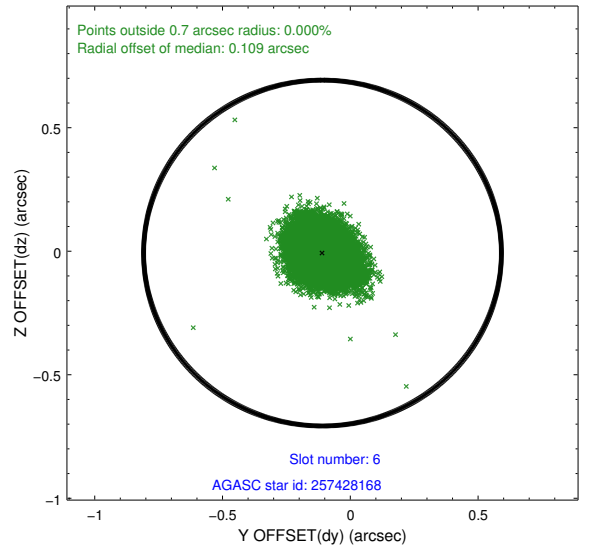
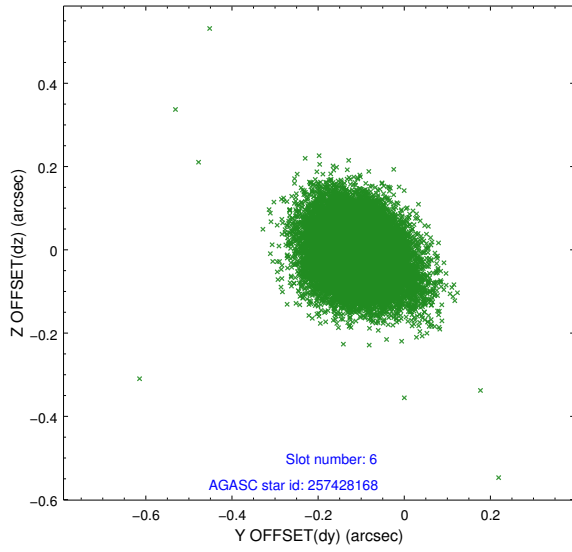
## 2.4.2 Slot 4



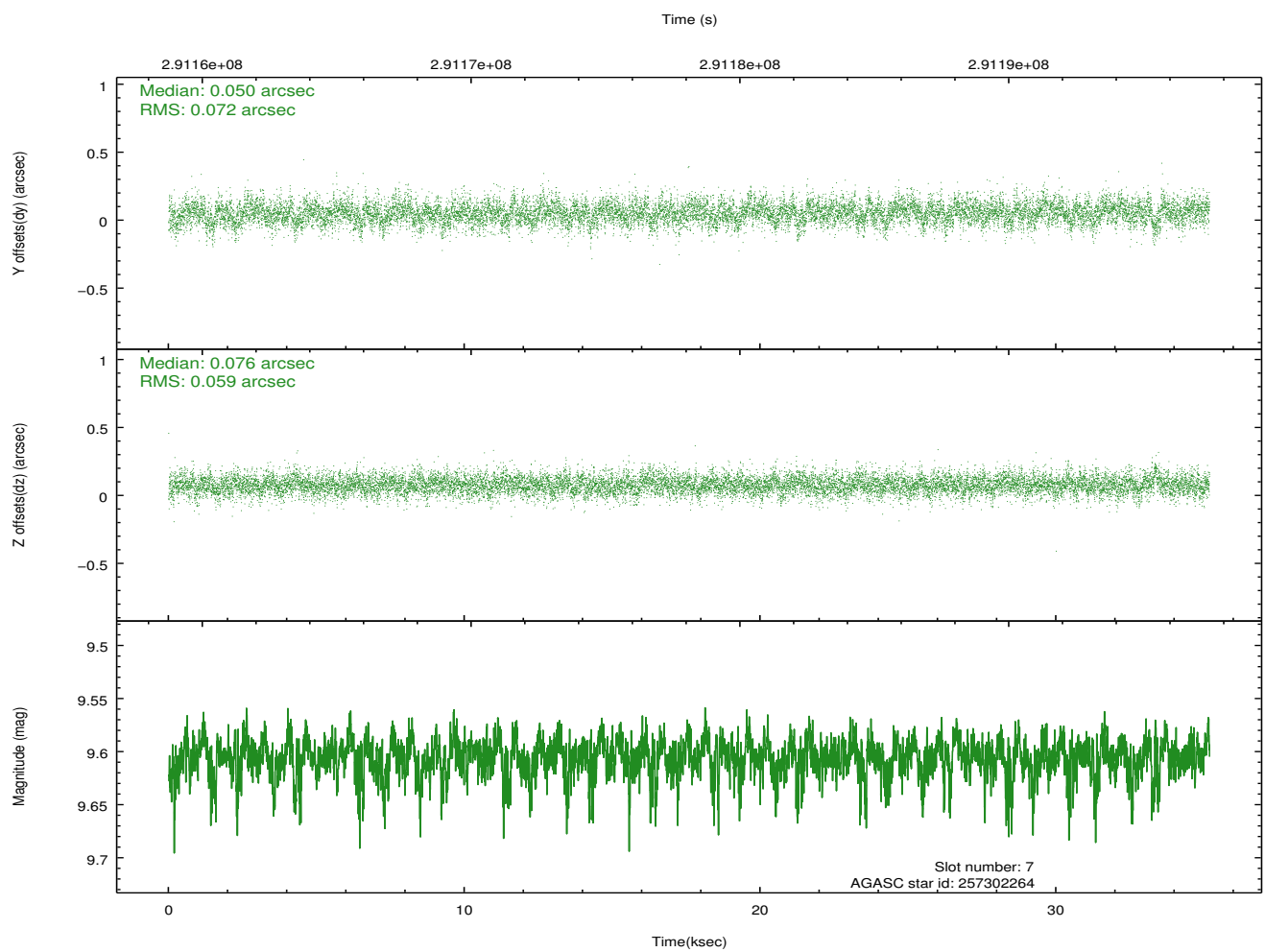
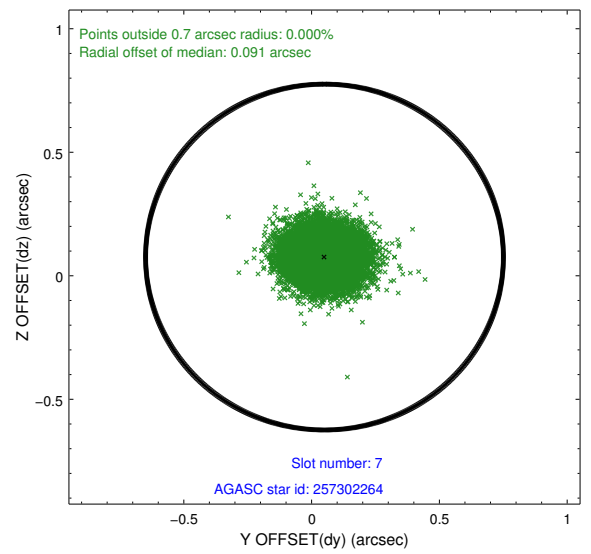
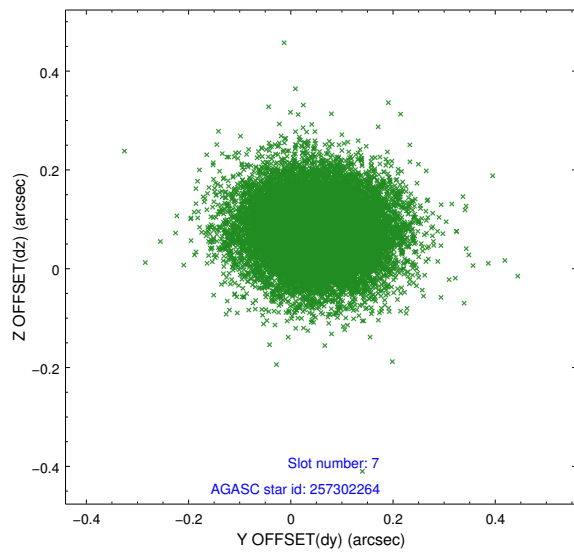
### 2.4.3 Slot 5



### 2.4.4 Slot 6

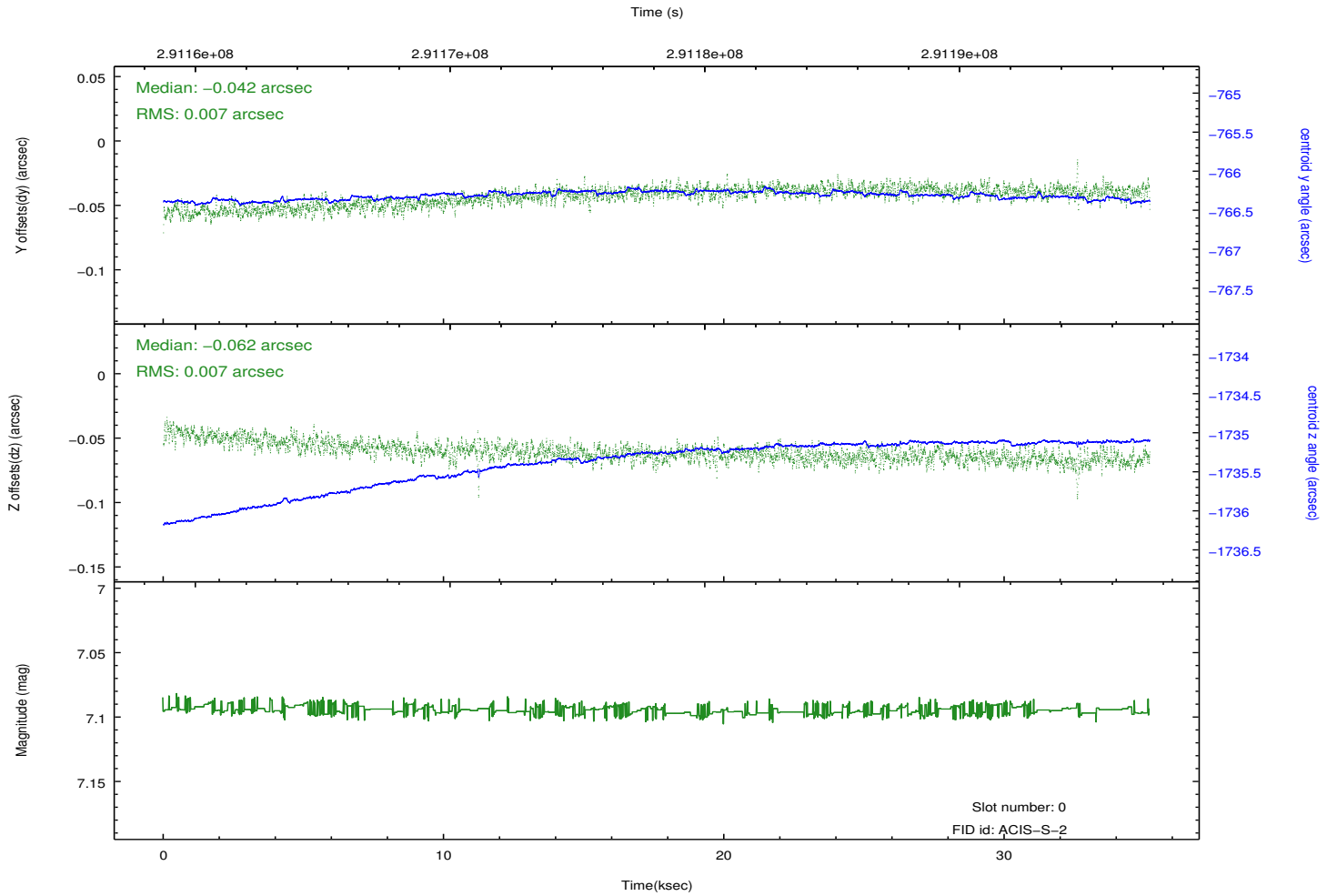
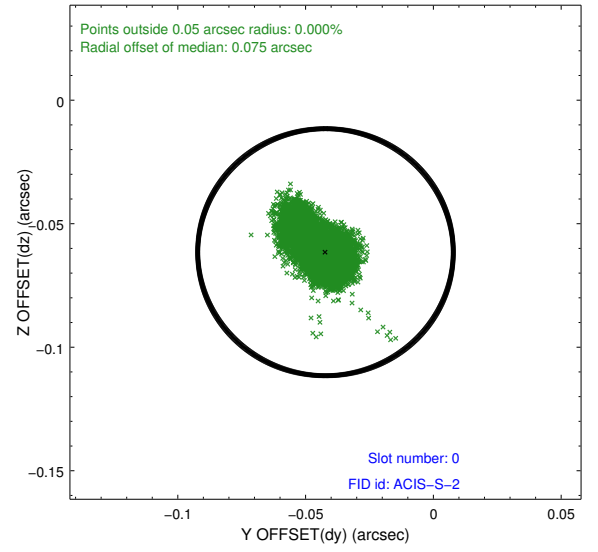
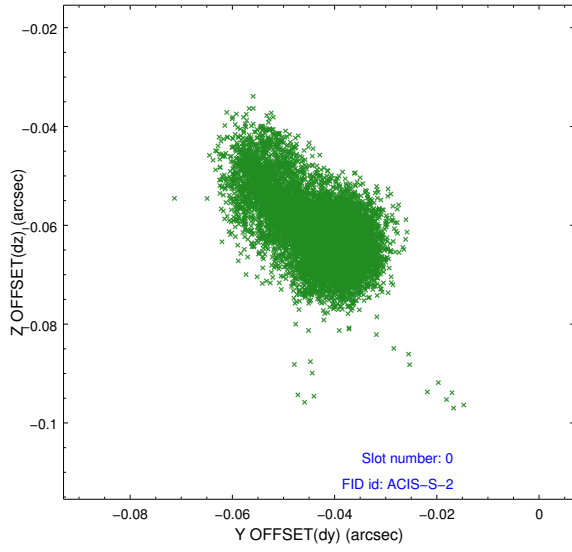


## 2.4.5 Slot 7

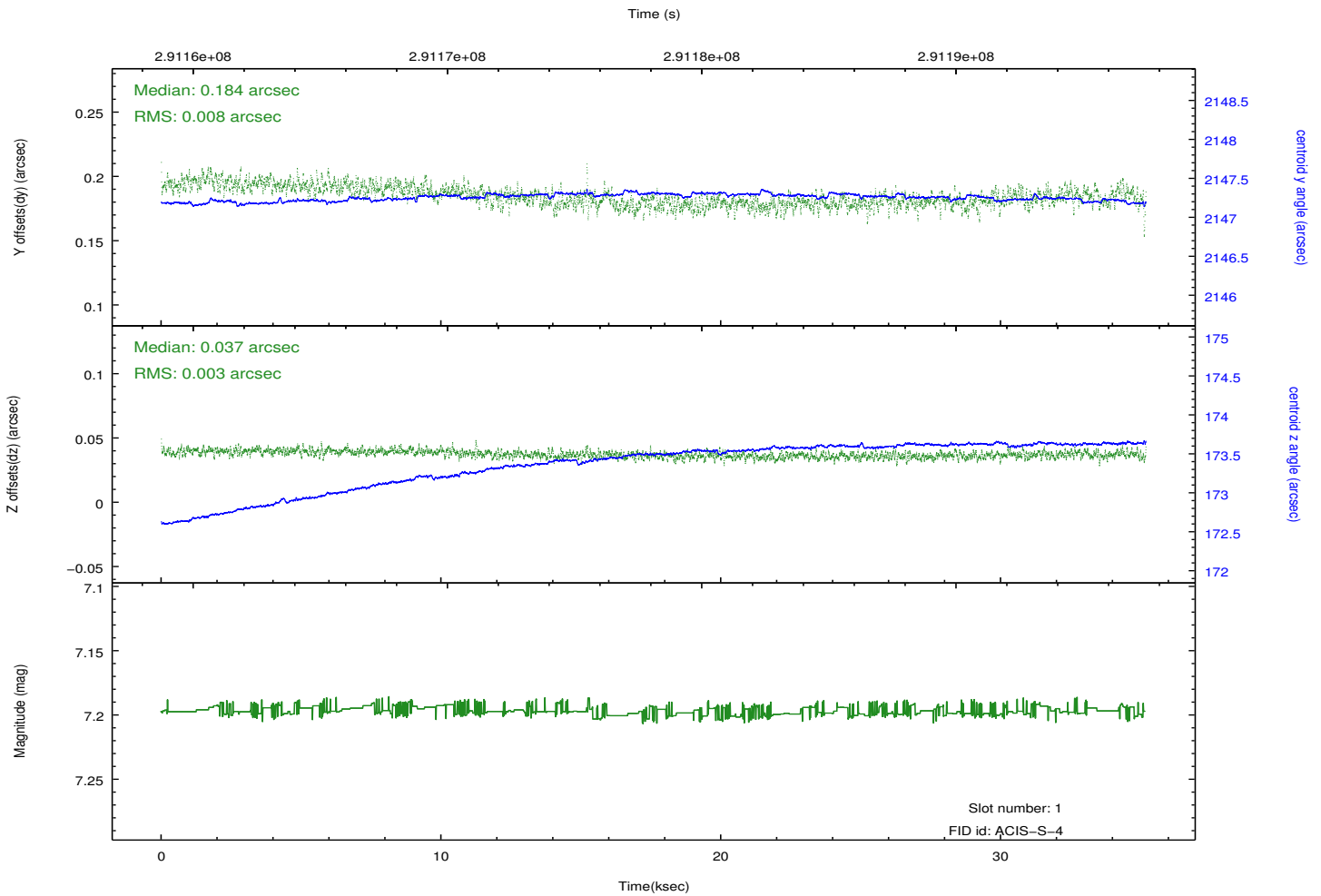
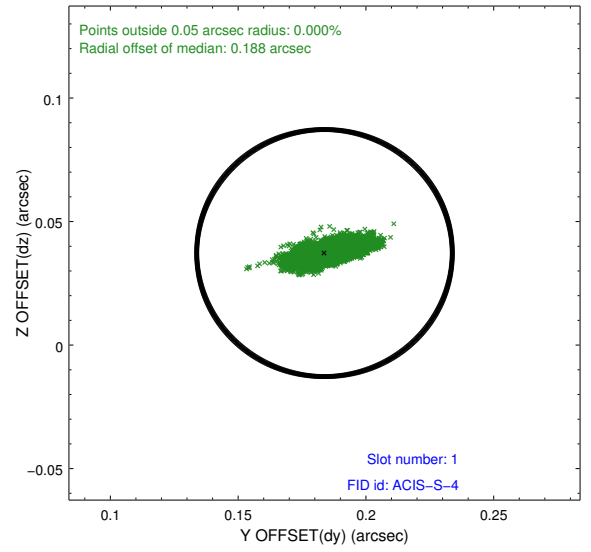
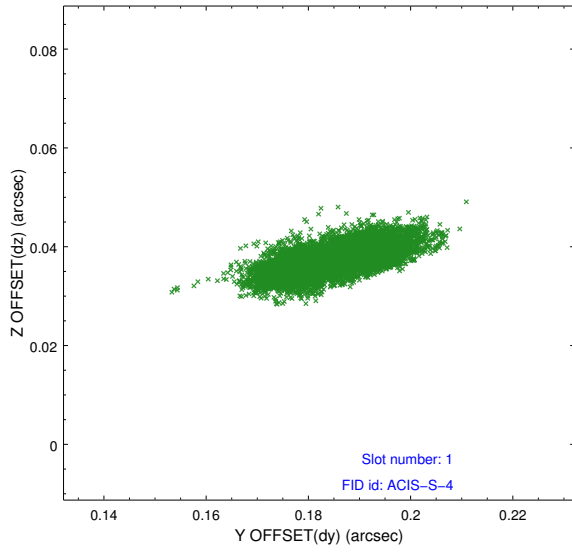


## 2.5 FID Slots

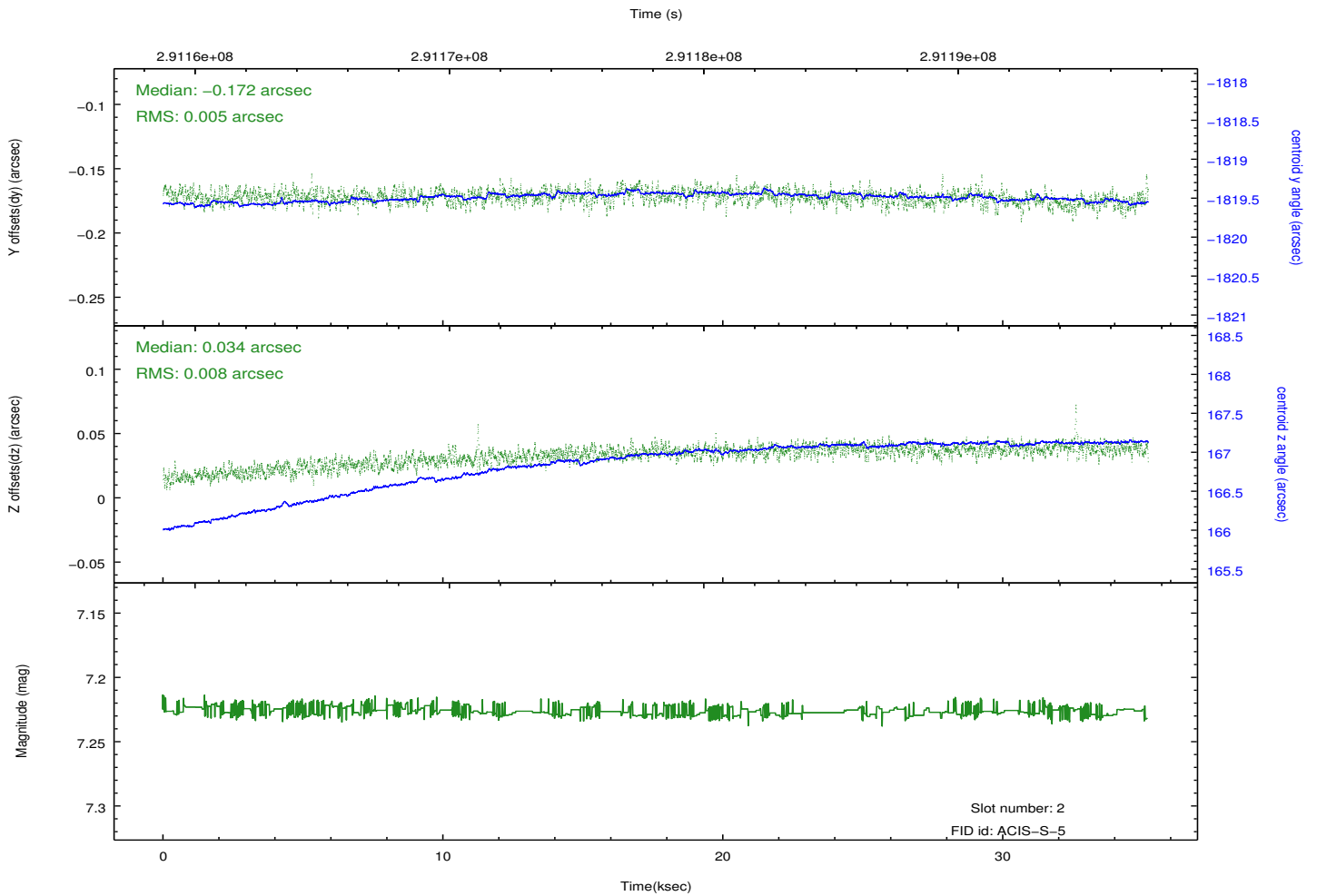
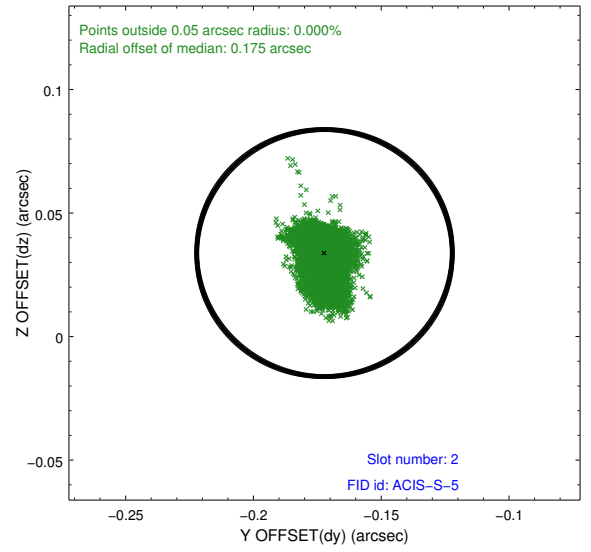
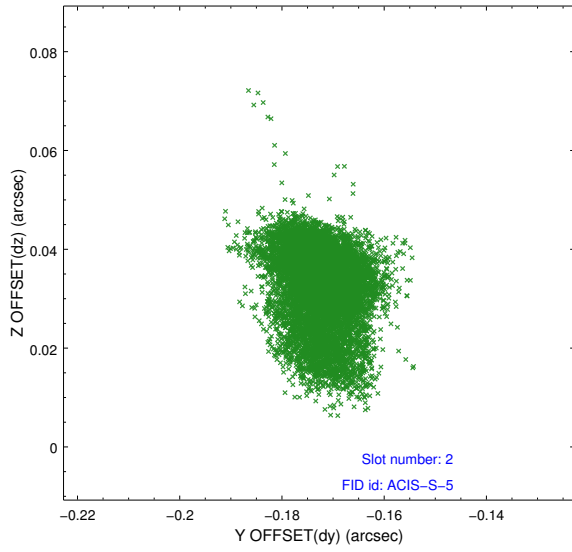
### 2.5.1 Slot 0



## 2.5.2 Slot 1



### 2.5.3 Slot 2



# A Summary

## A.1 Status

V&V Scientist	Beth Sundheim
V&V Date (YYYY-MM-DD)	2012.04.23
V&V Edition	1
V&V Disposition and Status	OK
V&V Charge Time	35.0692997

## A.2 Comments