

V&V Reference Report

L2 ASCDS Version : 8.4.4

Observation 8197 - L2 Version 3
Chandra X-Ray Center

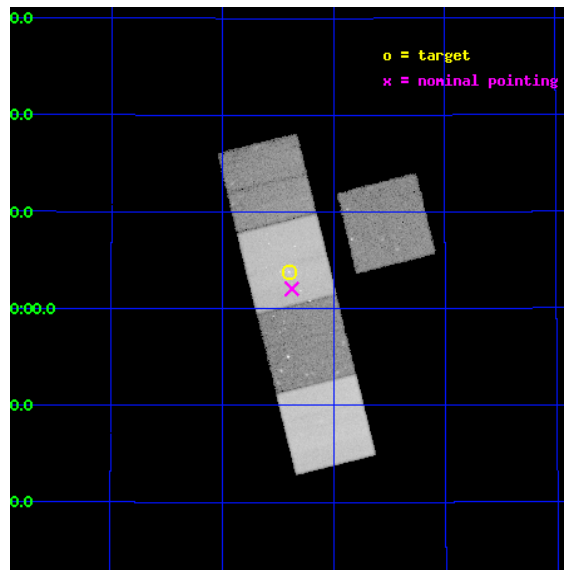
L2 Processing Date : May 7 2012

Contents

1 Front	2
2 OBI	3
2.1 OBI	3
2.1.1 Images	3
2.1.2 Bias	3
2.1.3 Parameters	4
2.1.4 Events	4
2.2 Compared Parameters	5
2.3 Aspect	6
2.4 Star Slots	9
2.4.1 Slot 3	9
2.4.2 Slot 4	10
2.4.3 Slot 5	11
2.4.4 Slot 6	12
2.4.5 Slot 7	13
2.5 FID Slots	14
2.5.1 Slot 0	14
2.5.2 Slot 1	15
2.5.3 Slot 2	16
A Summary	17
A.1 Status	17
A.2 Comments	17

1 Front

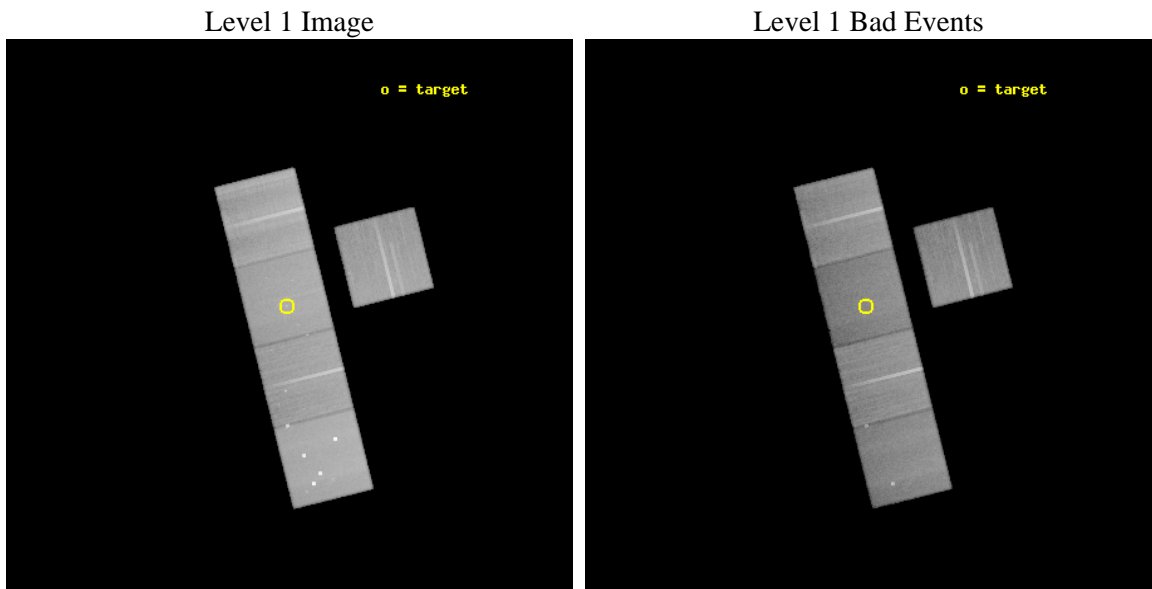
seq_num	600634	Sequence number
obs_id	8197	Observation id
title	Deep Chandra and Hubble Observations of NGC 1023: Testing the Origin of Low-Mass X-ray Binaries in a Lenticular Galaxy	Proposal title
observer	Prof. Gregory Sivakoff	Principal investigator
object	NGC1023	Source name
dtcycle	0	
cycle	P	events from which exps? Prim/Second/Both
ra_targ	40.1	Observer's specified target RA [deg]
dec_targ	39.06325	Observer's specified target Dec [deg]
ra_nom	40.094029488787	Nominal RA [deg]
dec_nom	39.034385929428	Nominal Dec [deg]
roll_nom	256.01656837994	Nominal Roll [deg]
revision	3	Processing version of data
ontime	48877.659385502	Sum of GTIs [s]
livetime	48239.036782421	Livetime [s]
ontime3	48874.518375278	Sum of GTIs [s]
ontime5	48880.800375938	Sum of GTIs [s]
ontime6	48874.518434942	Sum of GTIs [s]
ontime7	48877.659385502	Sum of GTIs [s]
ontime8	48871.377365112	Sum of GTIs [s]
l2events	556710	Number of level 2 events



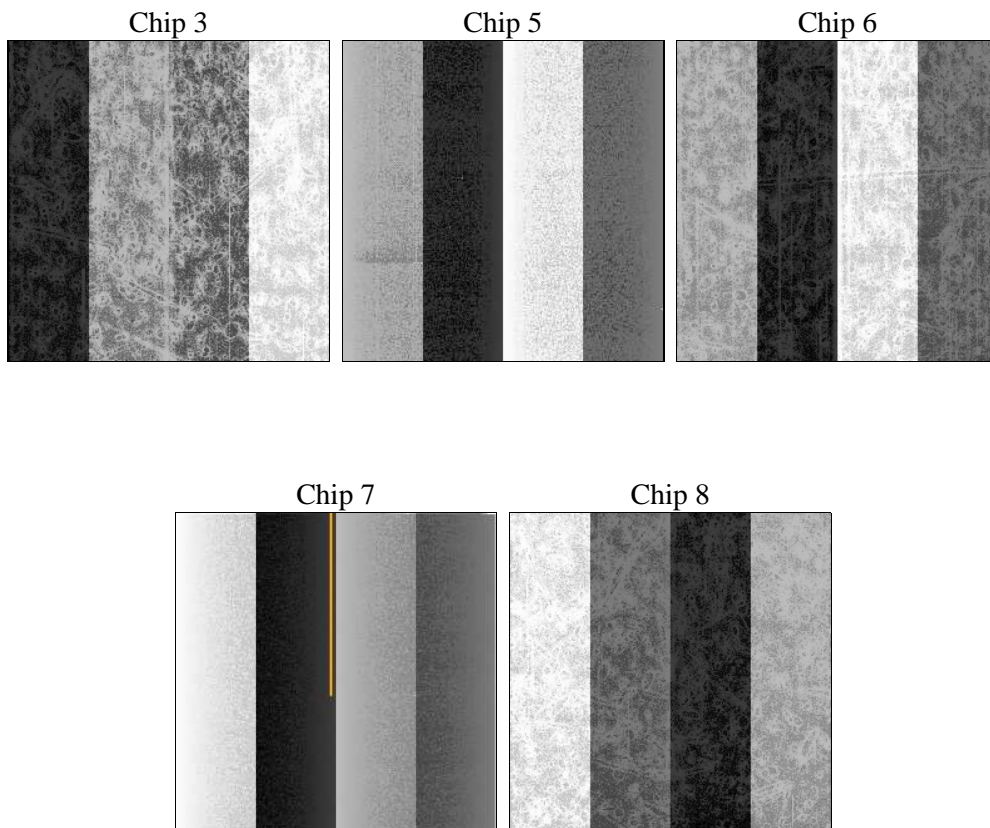
2 OBI

2.1 OBI

2.1.1 Images



2.1.2 Bias



2.1.3 Parameters

obi_num	1	Obi number	sched_exp_time	48717.325000	[s] Scheduled observation exposure time
ascdsver	8.4.4	Processing system revision	ontime	48877.659385502	Sum of GTIs [s]
caldbver	4.4.9	 	ontime3	48874.518375278	Sum of GTIs [s]
date	2012-05-07T03:41:16	Date and time of file creation	ontime5	48880.800375938	Sum of GTIs [s]
revision	3	Processing version of data	ontime6	48874.518434942	Sum of GTIs [s]
			ontime7	48877.659385502	Sum of GTIs [s]
			ontime8	48871.377365112	Sum of GTIs [s]
			l1events	2357565	Number of level 1 events

2.1.4 Events

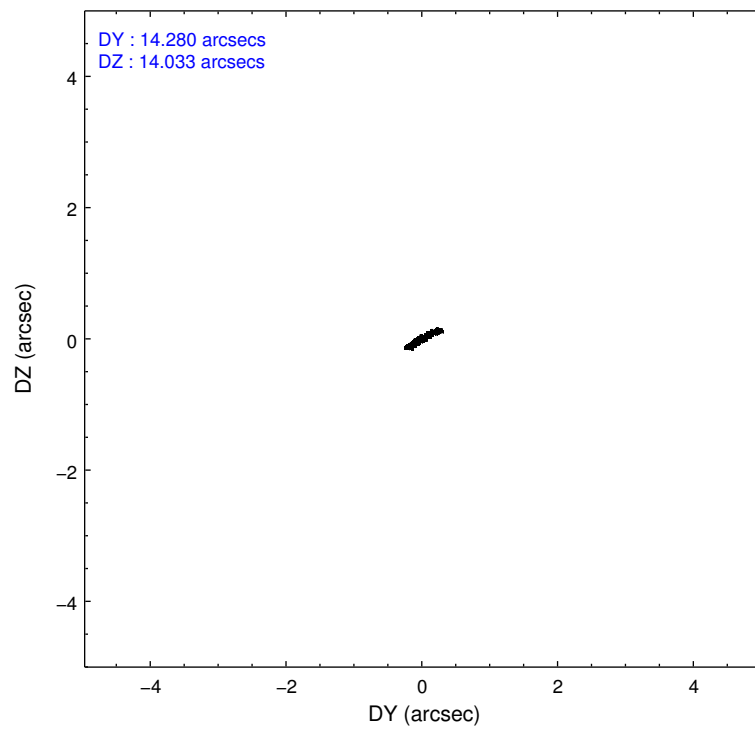
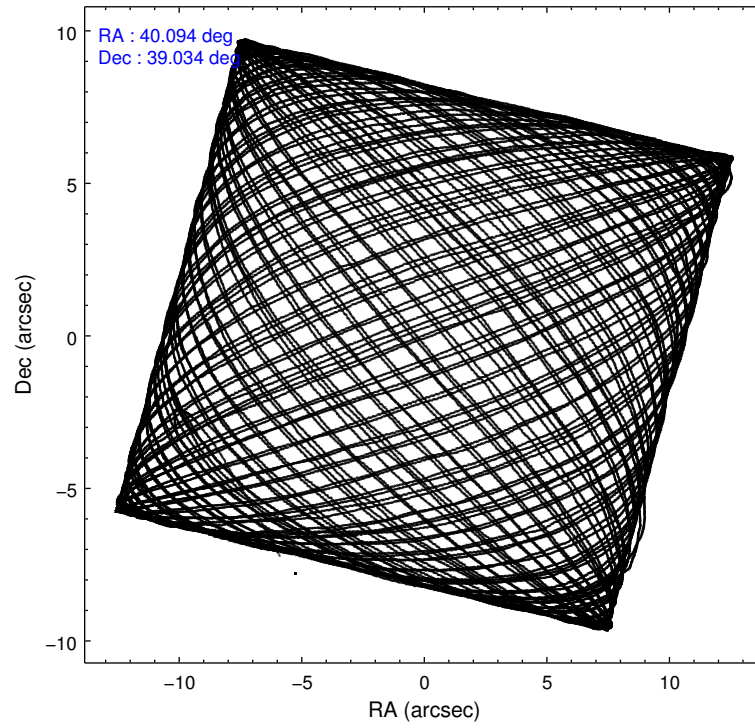
	ccd 3	ccd 5	ccd 6	ccd 7	ccd 8
level 1 events	393414	596857	409161	452686	505447
rejected events	357029	289039	366673	251089	388029
rejected %	90%	48%	89%	55%	76%

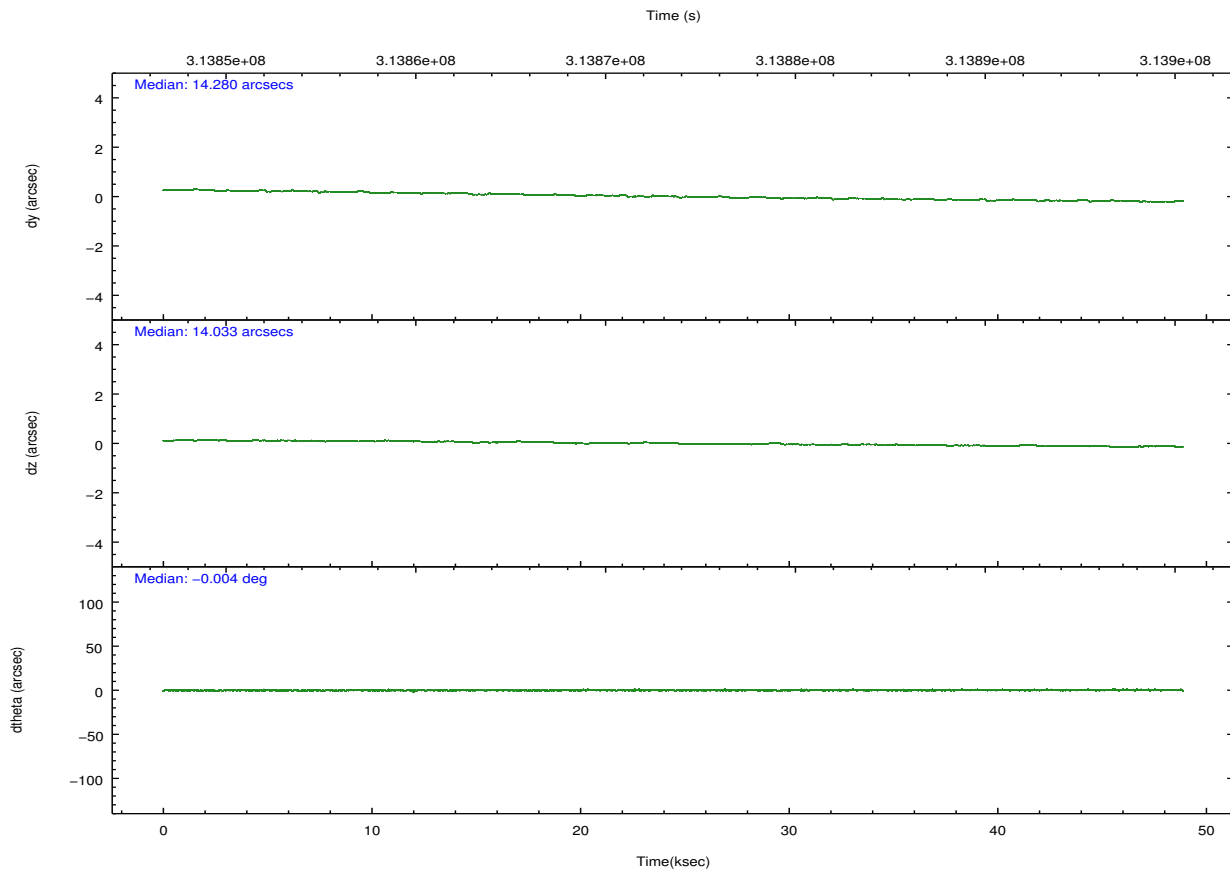
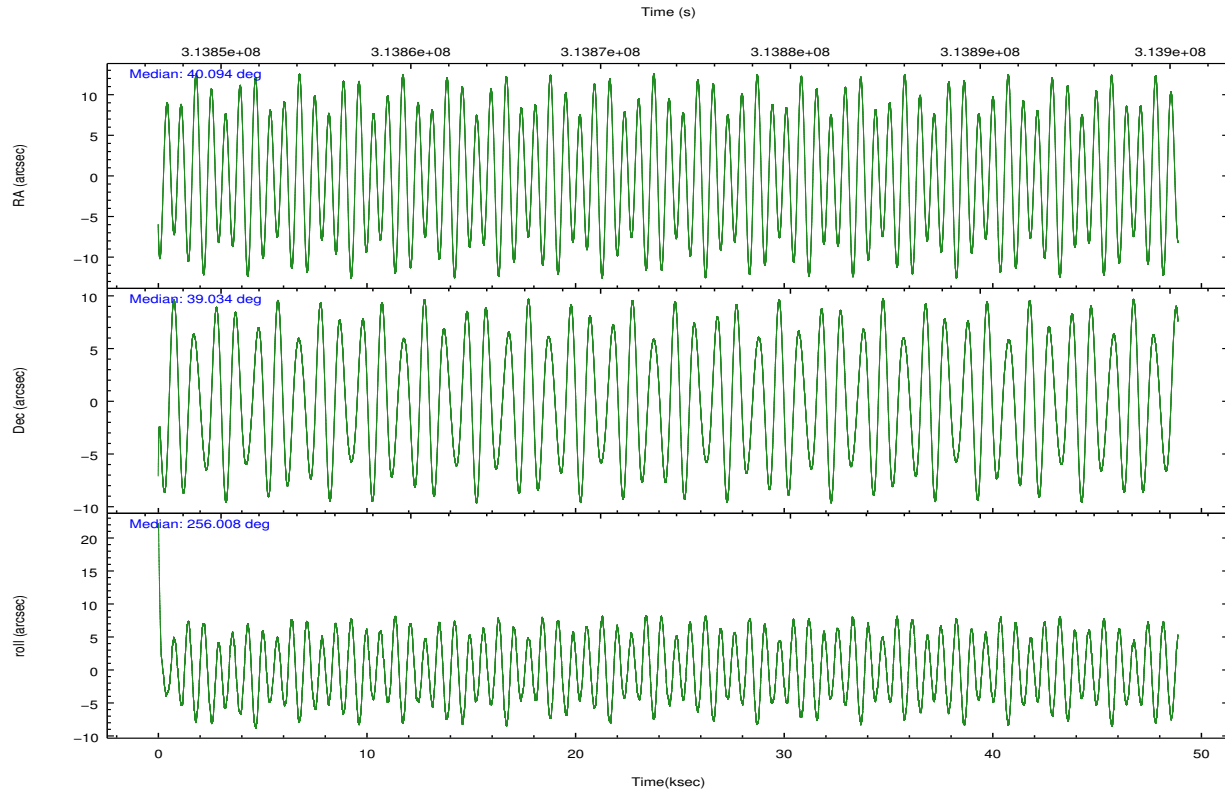
	ccd 3	ccd 5	ccd 6	ccd 7	ccd 8
grade 0 events	13074	61847	15959	19782	34969
	3%	10%	3%	4%	6%
grade 1 events	249	4039	181	529	385
	0%	0%	0%	0%	0%
grade 2 events	8028	85642	9408	41685	28301
	2%	14%	2%	9%	5%
grade 3 events	4332	10805	4521	18768	12564
	1%	1%	1%	4%	2%
grade 4 events	4164	10358	4512	18476	11753
	1%	1%	1%	4%	2%
grade 5 events	15986	41937	16026	46659	23556
	4%	7%	3%	10%	4%
grade 6 events	7553	145403	8914	107197	32269
	1%	24%	2%	23%	6%
grade 7 events	340028	236826	349640	199590	361650
	86%	39%	85%	44%	71%

2.2 Compared Parameters

Parameter	Planned	Actual	Parameter	Planned	Actual
Instrument	ACIS	ACIS	Obspar format version number	7	7
Detector	ACIS-35678	ACIS-35678	Obspar file type	PREDICTED	ACTUAL
Grating	NONE	NONE	Obspar update status	NONE	UPDATED
Data mode	VFAINT	VFAINT	Number of optional ACIS chips dropped	0	0
Observation mode	POINTING	POINTING	On-chip summing requested	N	N
[deg] Pointing RA	40.083849	40.0940294887869	Subarray requested	NONE	NONE
[deg] Pointing Dec	39.060566	39.03438592942771	Alternating exposures requested	N	N
[deg] Pointing Roll	255.866351	256.0165683799385	[s] Primary exposure time	0.000000	3.1
[mm] SIM focus pos	-0.684267	-0.6828225247311905			
[mm] SIM defocus	0	0.001444936568705701			
[mm] SIM translation stage pos	-190.132523	-190.1425803651734			
[mm] SIM translation stage offset	0	0.01005778216563158			
[s] Observation start time (MET)	313849276.184000	313847774.85887			
Observation start date	2007-12-12T12:20:11	2007-12-12T11:56:14			
[s] Observation end time (MET)	313897993.184000	313898219.21131			
Observation end date	2007-12-13T01:52:08	2007-12-13T01:56:59			
Read mode	TIMED	TIMED			

2.3 Aspect



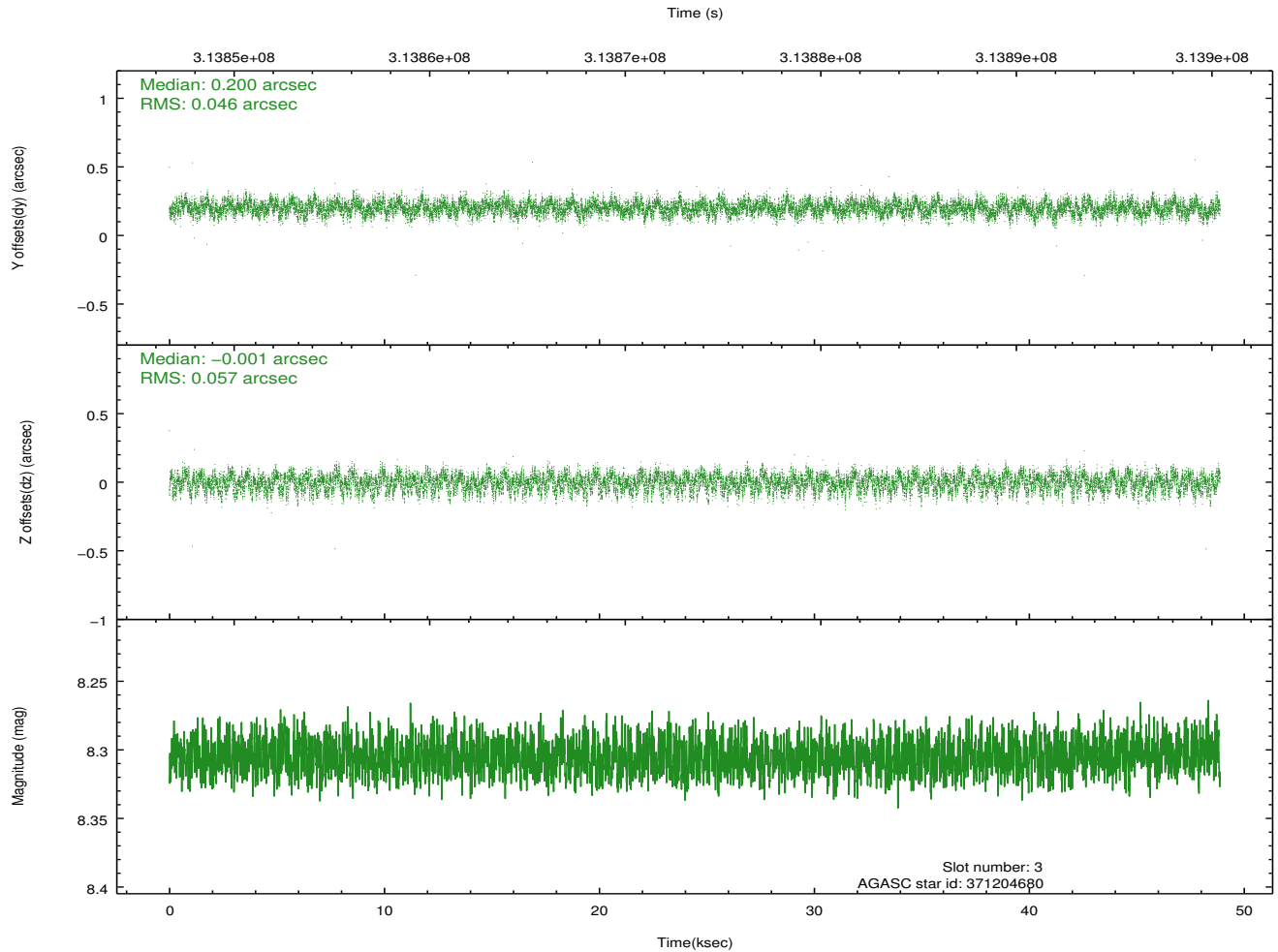
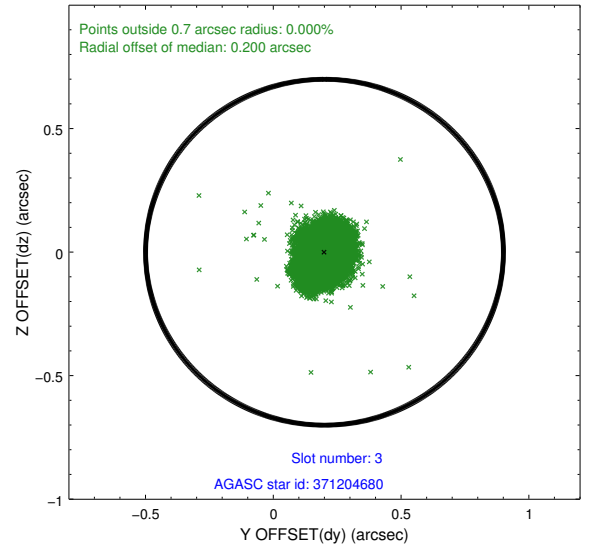
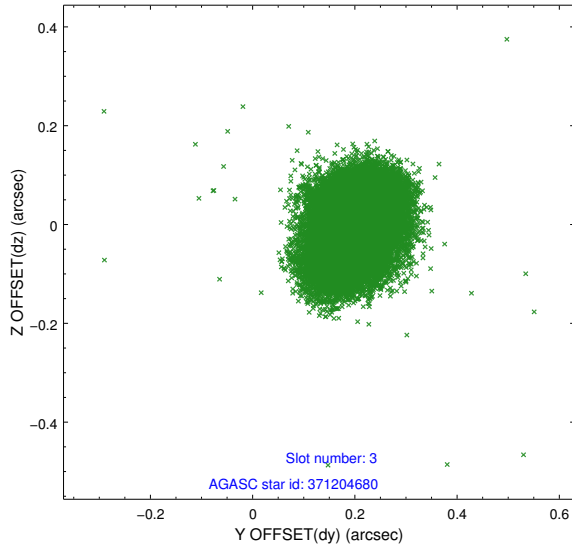


Slot Statistics

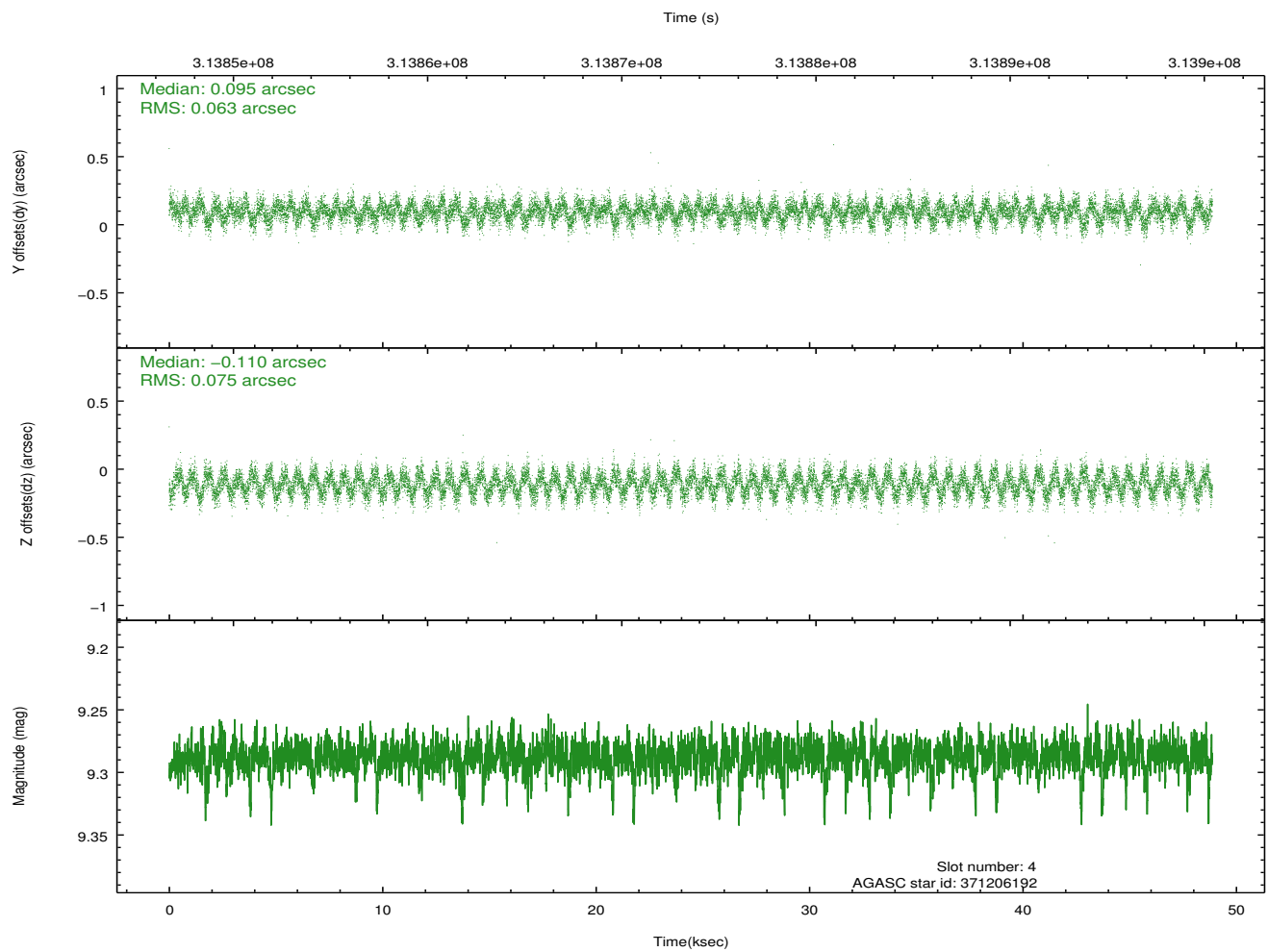
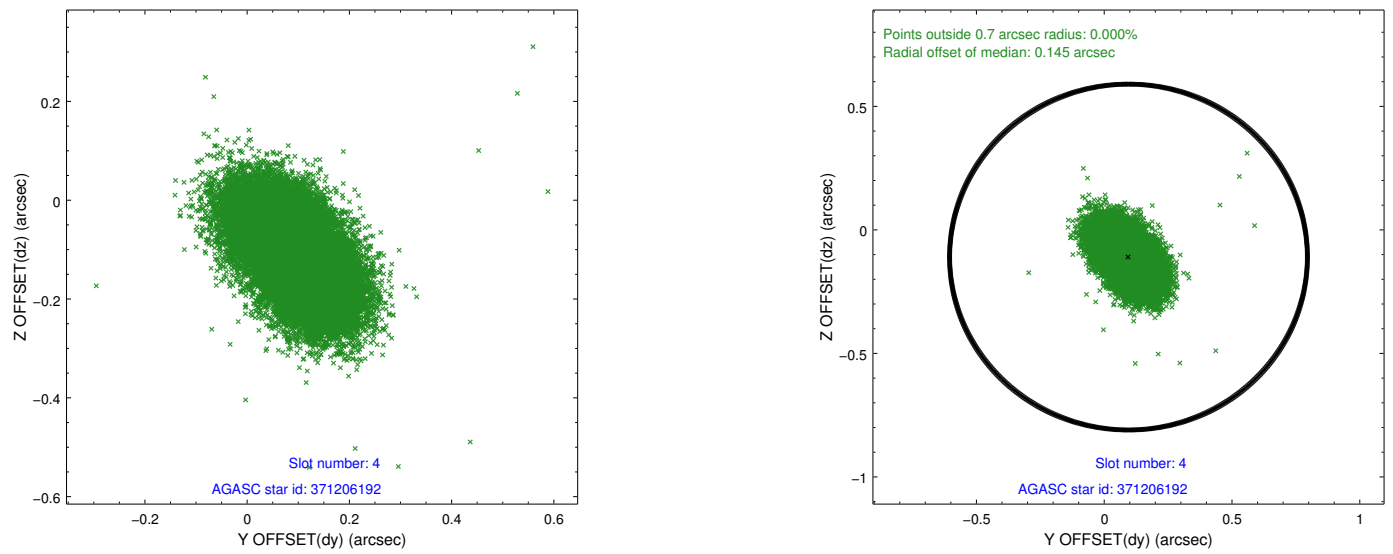
slot	status	id	mag	n_pts	med_dy	med_dz	dr1	dr2	ra	dec	mean_y	mean_z
0	FID	ACIS-S-2	7.10	11921	-0.074	-0.064	0.010	0.016	0.000000	0.000000	-767.32	-1735.40
1	FID	ACIS-S-4	7.19	11922	0.207	0.053	0.009	0.015	0.000000	0.000000	2146.25	173.21
2	FID	ACIS-S-5	7.22	11922	-0.164	0.020	0.008	0.013	0.000000	0.000000	-1820.27	166.84
3	GUIDE	371204680	8.30	23838	0.200	-0.001	0.078	0.124	39.715200	39.150194	-62.92	-1077.06
4	GUIDE	371206192	9.29	23820	0.095	-0.110	0.105	0.168	39.265479	38.799854	1461.56	-1999.54
5	GUIDE	371209936	8.91	23824	-0.107	0.019	0.092	0.147	39.300739	38.838291	1303.76	-1935.56
6	GUIDE	372903184	9.02	23831	-0.004	0.088	0.077	0.126	40.811300	39.366216	-1569.12	1692.84
7	GUIDE	373438184	7.23	23843	-0.184	0.009	0.054	0.083	40.413347	39.537922	-1891.46	467.17

2.4 Star Slots

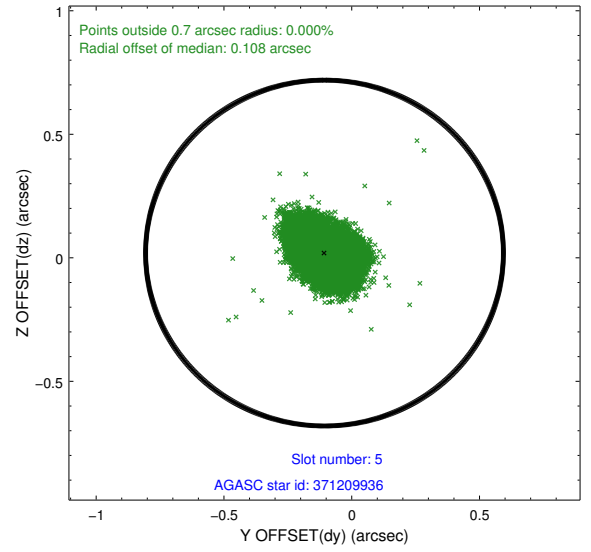
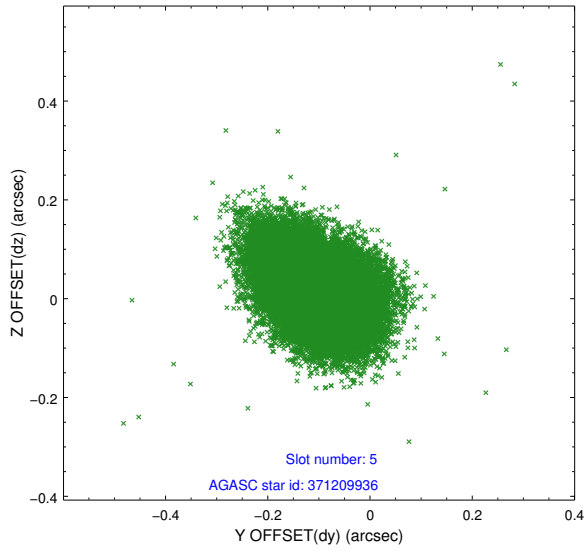
2.4.1 Slot 3



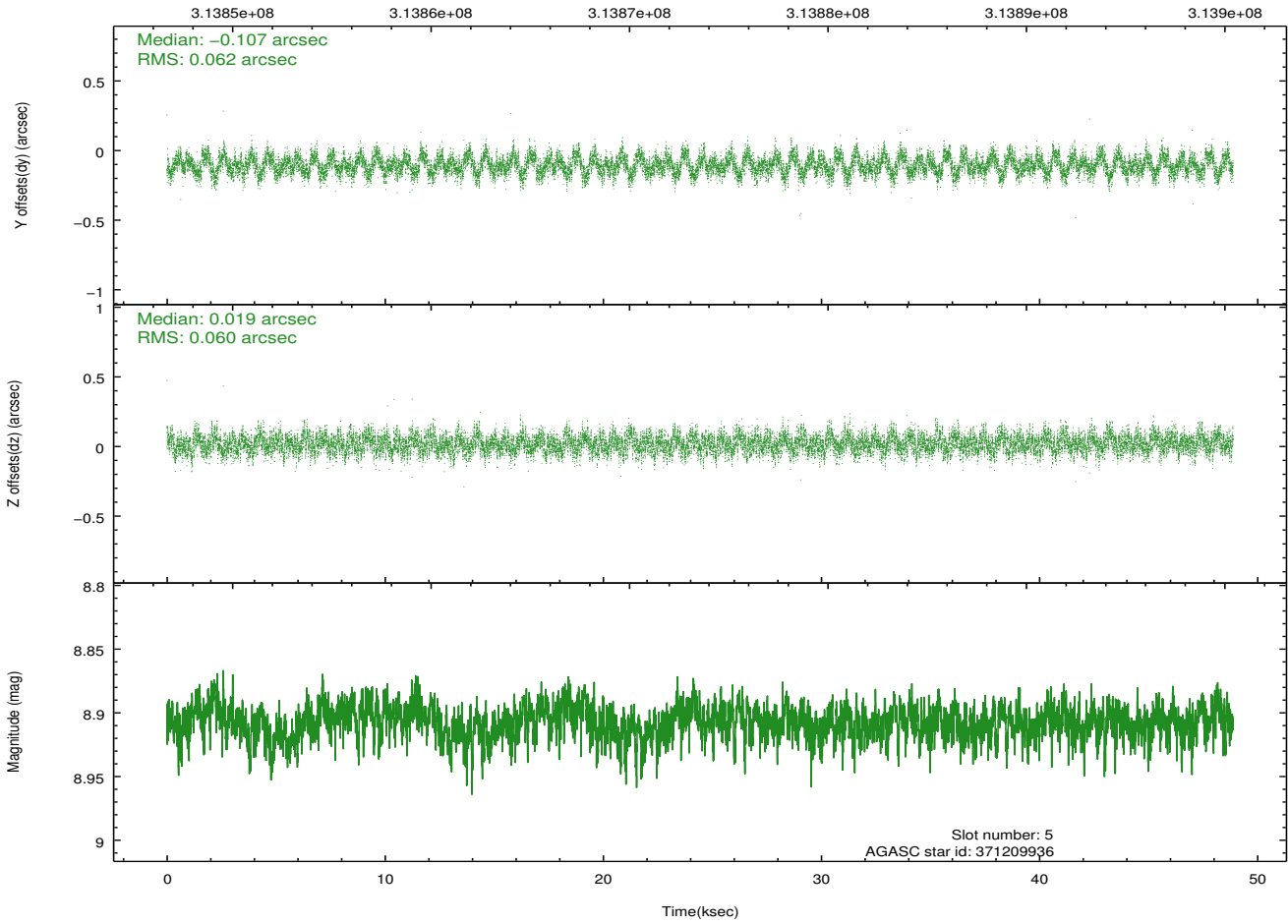
2.4.2 Slot 4



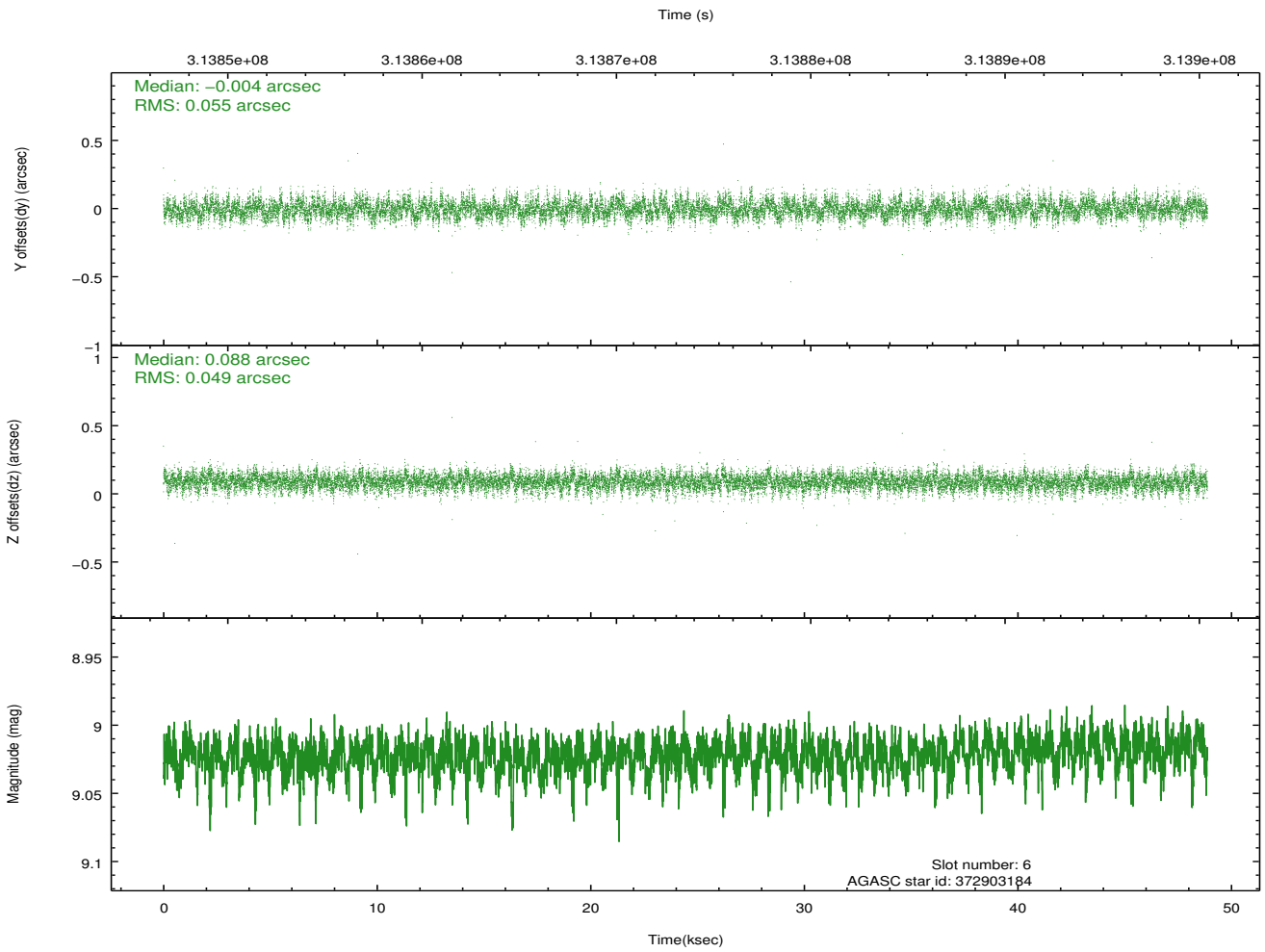
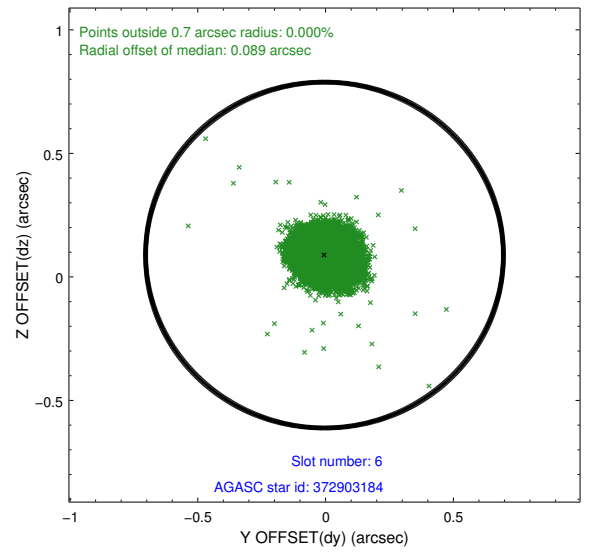
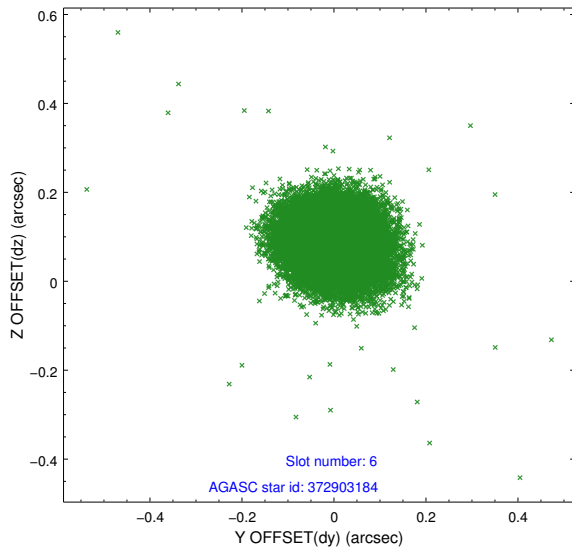
2.4.3 Slot 5



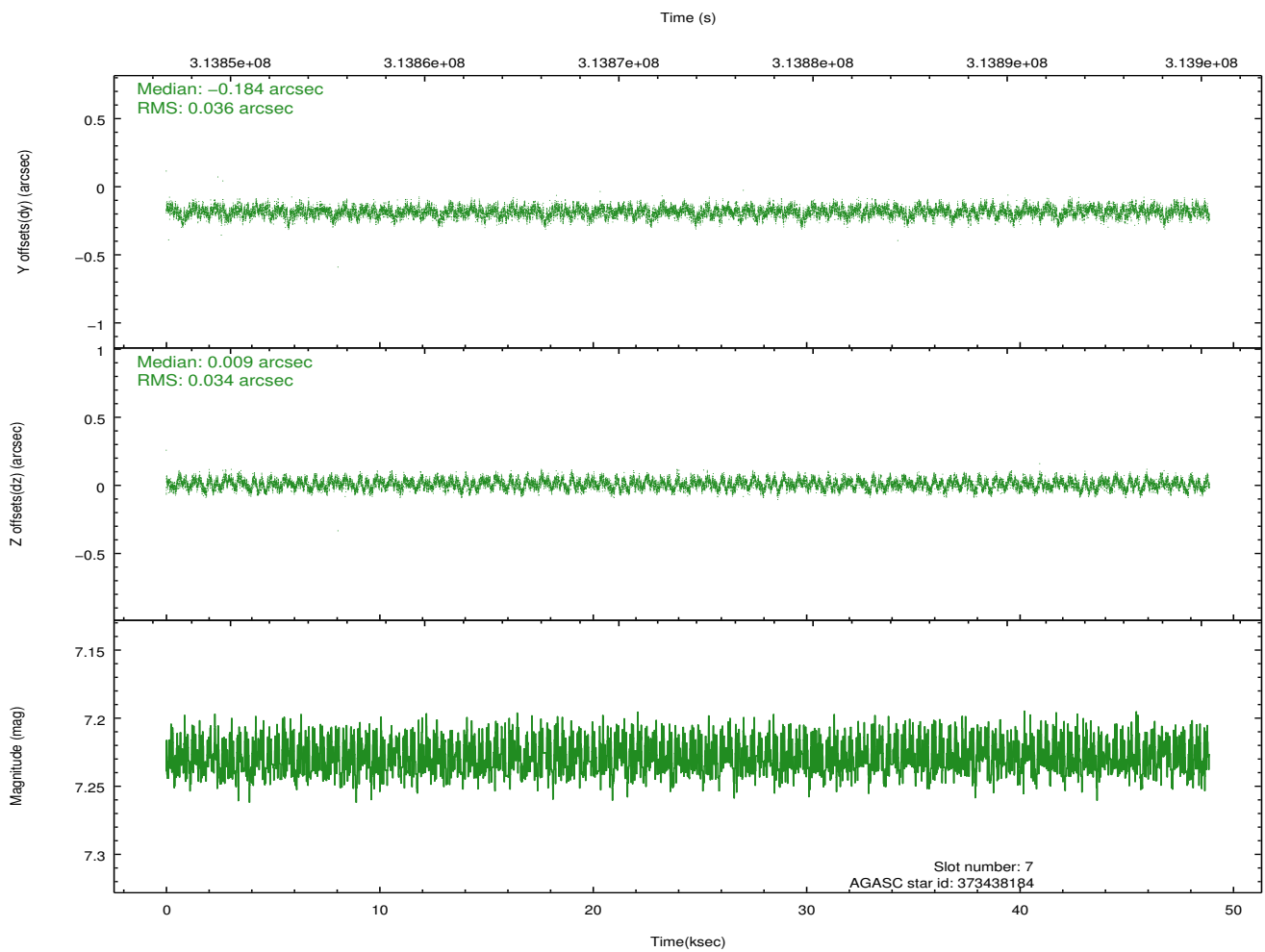
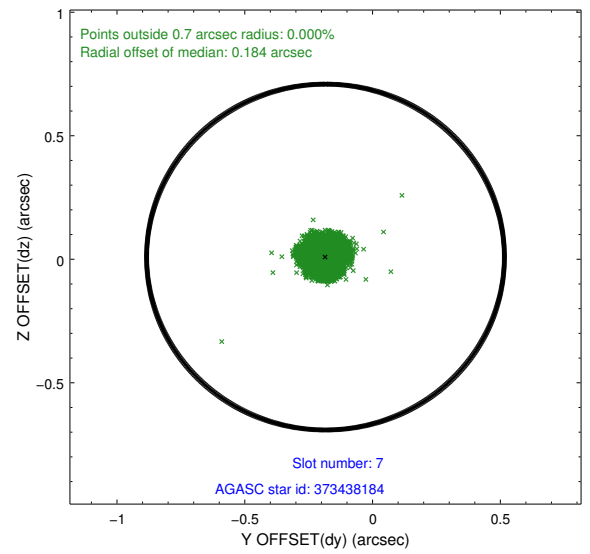
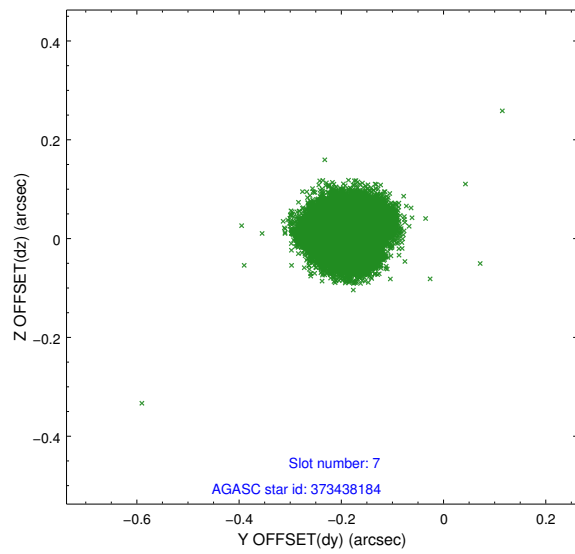
Time (s)



2.4.4 Slot 6

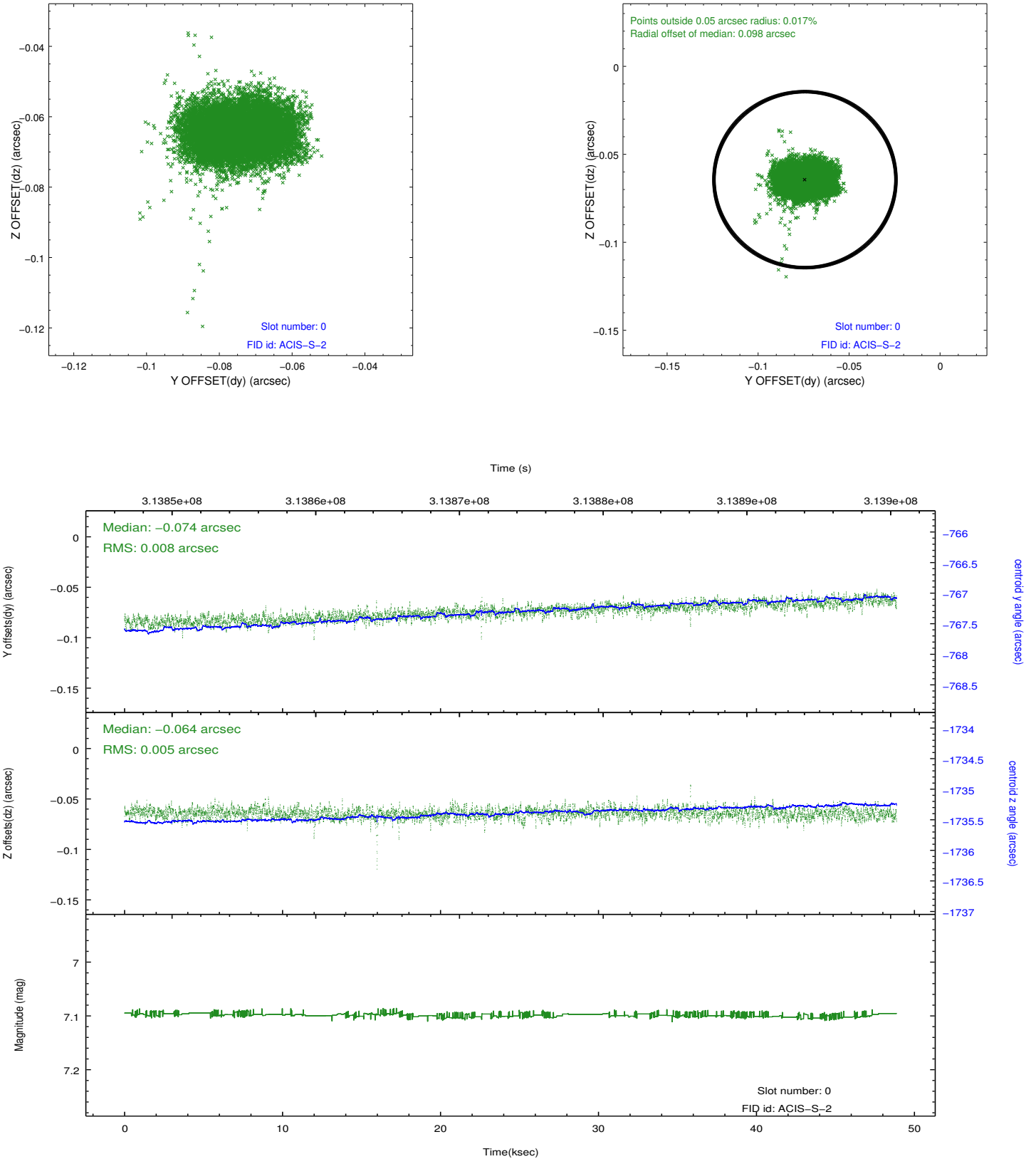


2.4.5 Slot 7

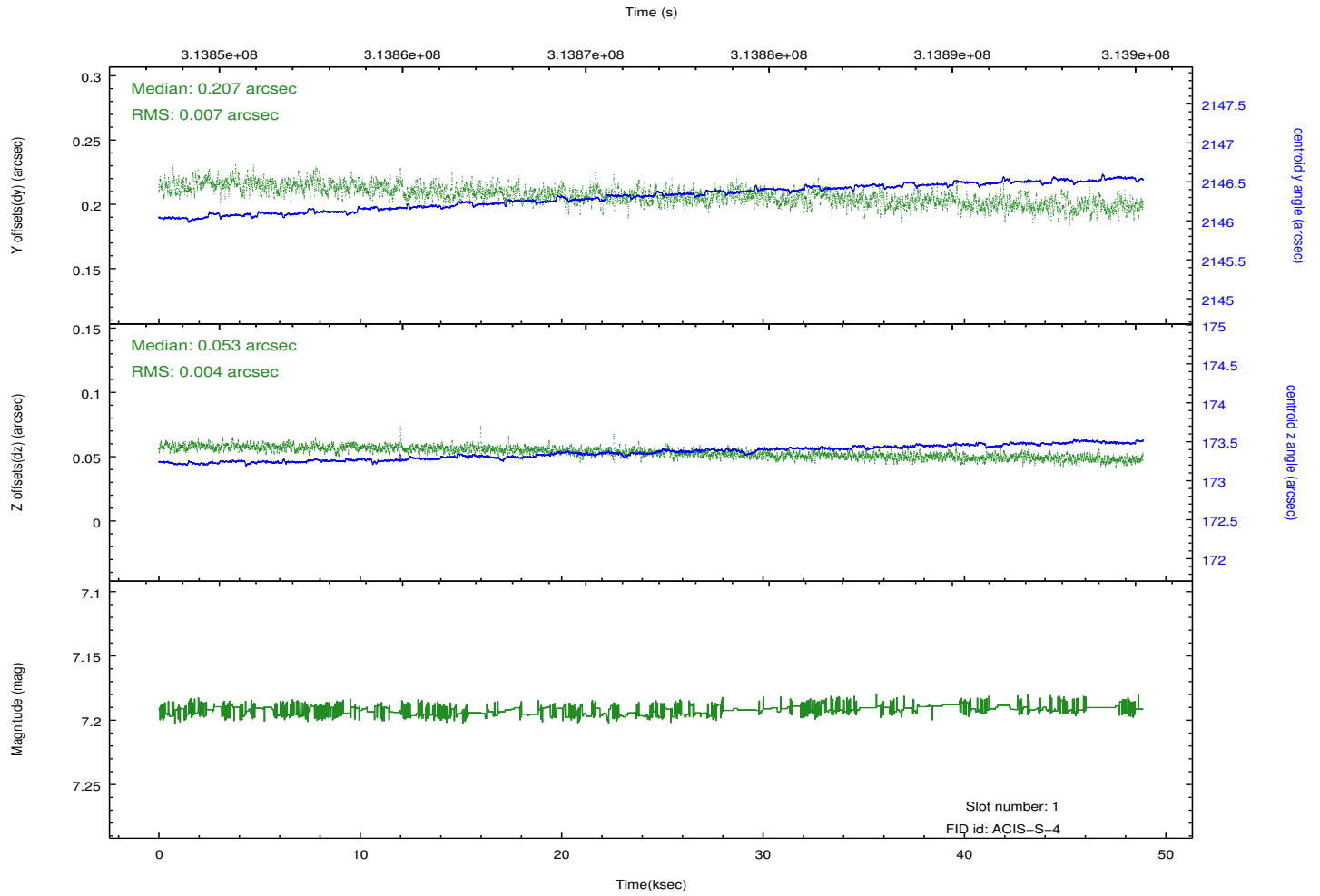
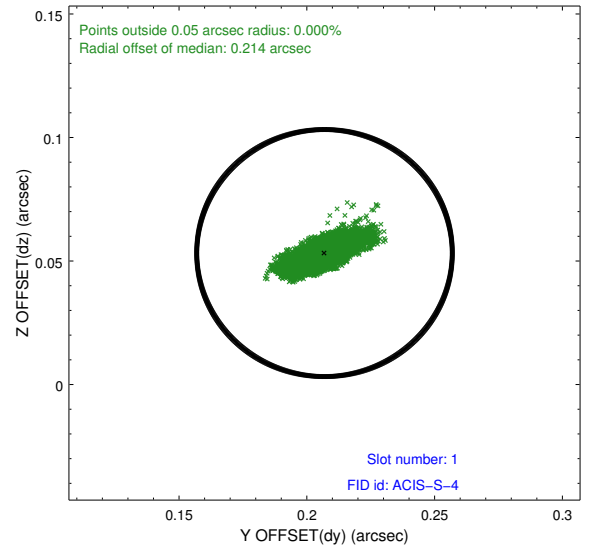
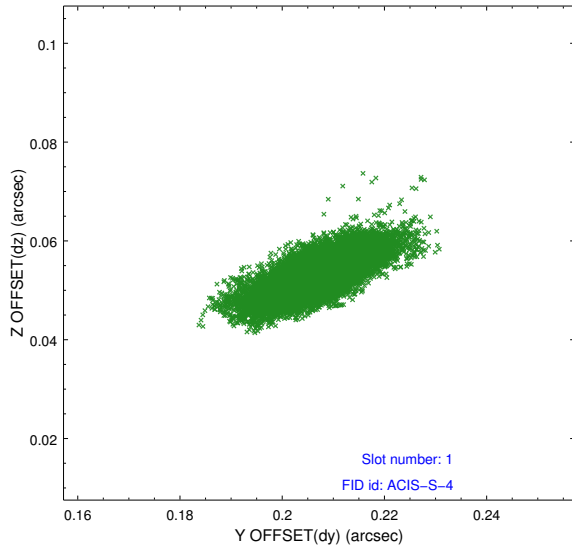


2.5 FID Slots

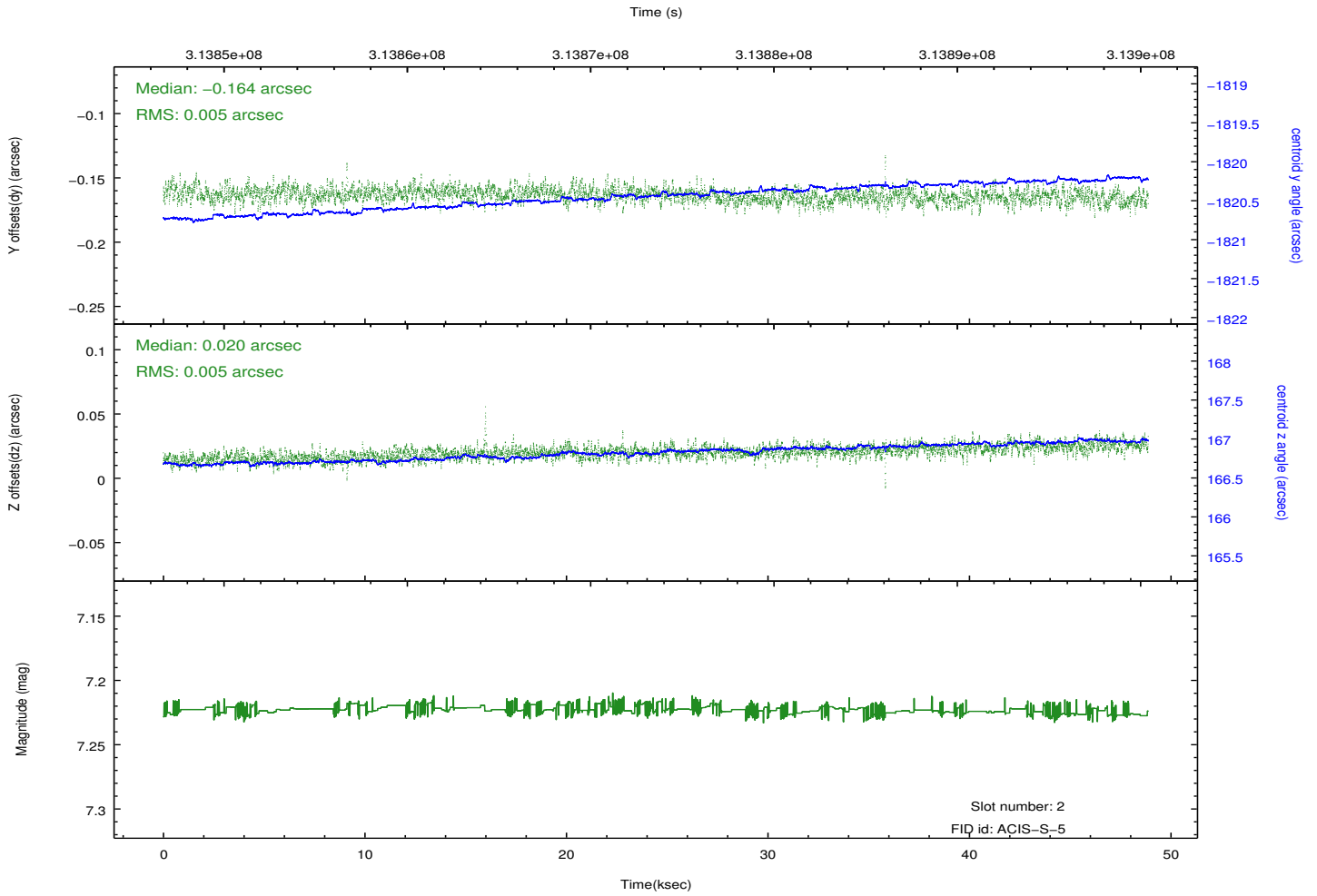
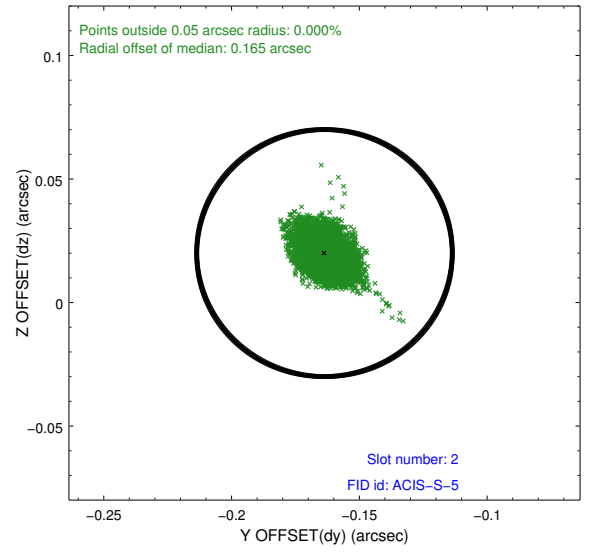
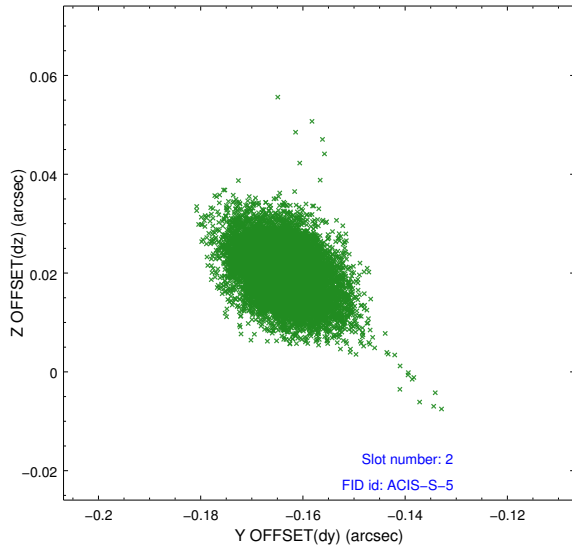
2.5.1 Slot 0



2.5.2 Slot 1



2.5.3 Slot 2



A Summary

A.1 Status

V&V Scientist	Jen Lauer
V&V Date (YYYY-MM-DD)	2012.05.08
V&V Edition	1
V&V Disposition and Status	OK
V&V Charge Time	48.8808003

A.2 Comments

Joint Proposal: HST