

V&V Reference Report

L2 ASCDS Version : 8.4.4

Observation 8247 - L2 Version 3
Chandra X-Ray Center

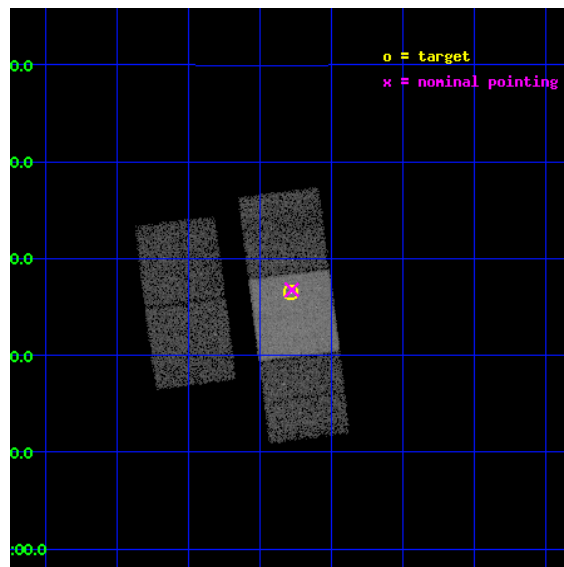
L2 Processing Date : Apr 20 2012

Contents

1	Front	2
2	OBI	3
2.1	OBI	3
2.1.1	Images	3
2.1.2	Bias	3
2.1.3	Parameters	4
2.1.4	Events	4
2.2	Compared Parameters	5
2.3	Aspect	6
2.4	Star Slots	9
2.4.1	Slot 3	9
2.4.2	Slot 4	10
2.4.3	Slot 5	11
2.4.4	Slot 6	12
2.4.5	Slot 7	13
2.5	FID Slots	14
2.5.1	Slot 0	14
2.5.2	Slot 1	15
2.5.3	Slot 2	16
A	Summary	17
A.1	Status	17
A.2	Comments	17

1 Front

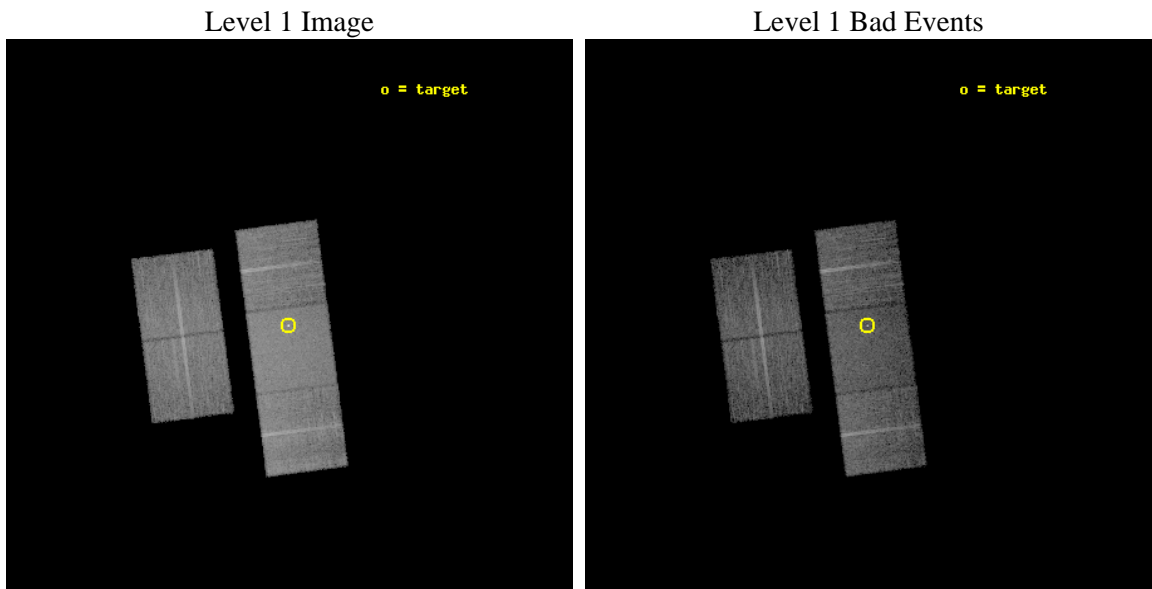
seq_num	701562	Sequence number
obs_id	8247	Observation id
title	A snapshot X-ray/radio survey of AGNs selected from the long menu of SDSS galaxies	Proposal title
observer	Dr. Sebastian Heinz	Principal investigator
object	CGCG 043-056	Source name
dtcycle	0	
cycle	P	events from which exps? Prim/Second/Both
ra_targ	193.445917	Observer's specified target RA [deg]
dec_targ	3.4418	Observer's specified target Dec [deg]
ra_nom	193.44394270879	Nominal RA [deg]
dec_nom	3.4462394567639	Nominal Dec [deg]
roll_nom	82.590453615463	Nominal Roll [deg]
revision	3	Processing version of data
ontime	8128.2000625134	Sum of GTIs [s]
livetime	8021.9991448028	Livetime [s]
ontime2	8128.2000625134	Sum of GTIs [s]
ontime3	8128.2000625134	Sum of GTIs [s]
ontime6	8125.059092164	Sum of GTIs [s]
ontime7	8128.2000625134	Sum of GTIs [s]
ontime8	8125.0591818094	Sum of GTIs [s]
l2events	77170	Number of level 2 events



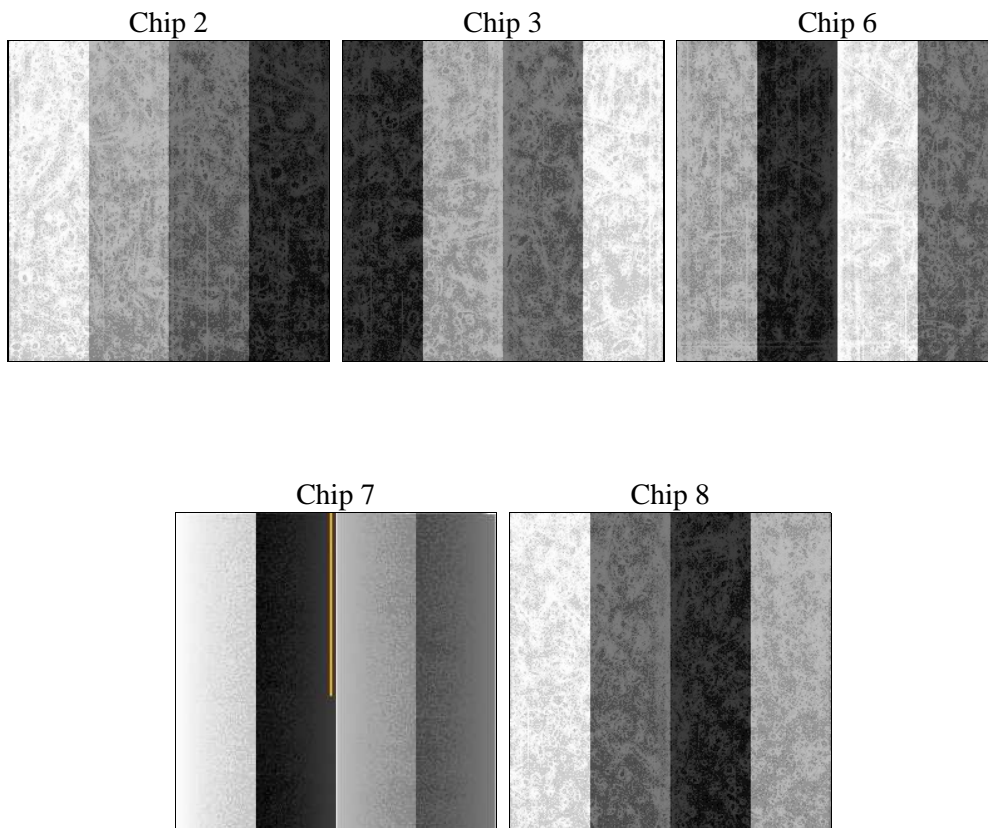
2 OBI

2.1 OBI

2.1.1 Images



2.1.2 Bias



2.1.3 Parameters

obi_num	0	Obi number	sched_exp_time	8000.000000	[s] Scheduled observation exposure time
ascdsver	8.4.4	Processing system revision	ontime	8128.2000625134	Sum of GTIs [s]
caldbver	4.4.9	 	ontime2	8128.2000625134	Sum of GTIs [s]
date	2012-04-21T00:59:23	Date and time of file creation	ontime3	8128.2000625134	Sum of GTIs [s]
revision	3	Processing version of data	ontime6	8125.059092164	Sum of GTIs [s]
			ontime7	8128.2000625134	Sum of GTIs [s]
			ontime8	8125.0591818094	Sum of GTIs [s]
			l1events	443009	Number of level 1 events

2.1.4 Events

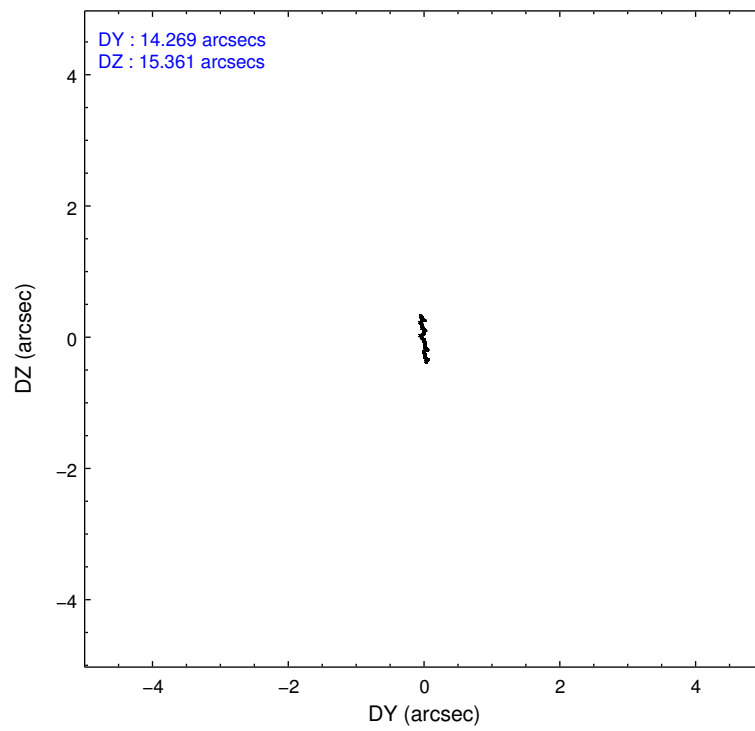
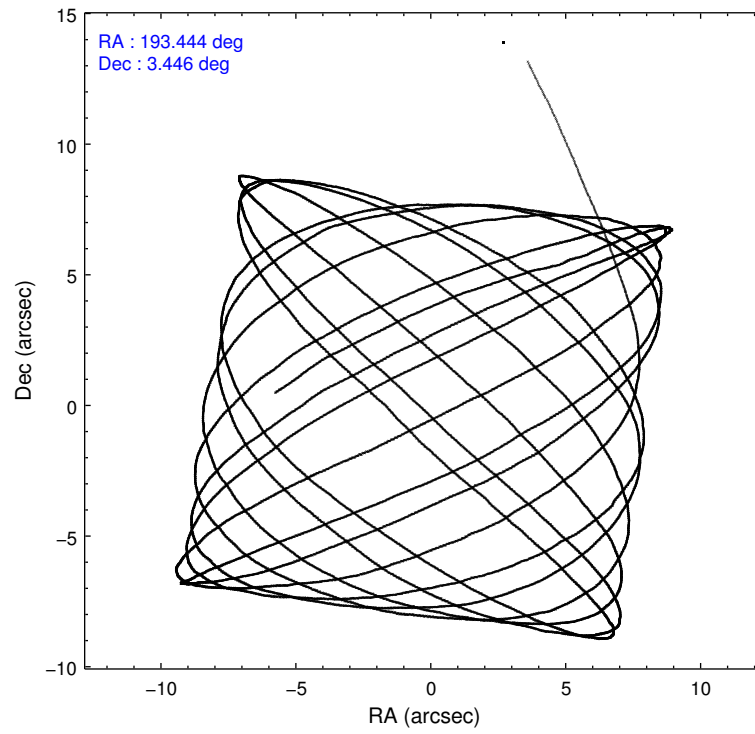
	ccd 2	ccd 3	ccd 6	ccd 7	ccd 8
level 1 events	75941	76374	79892	110563	100239
rejected events	66985	67511	70541	64992	78852
rejected %	88%	88%	88%	58%	78%

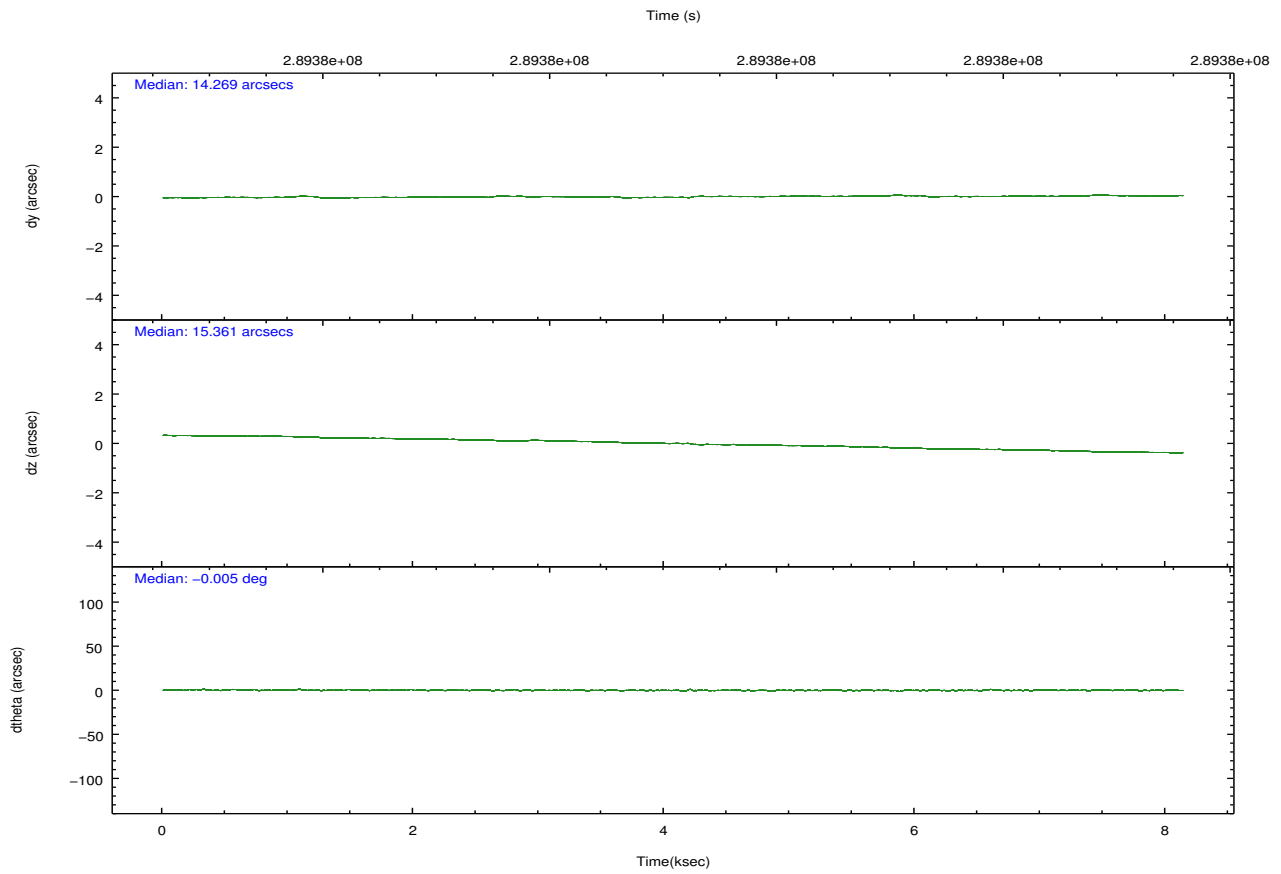
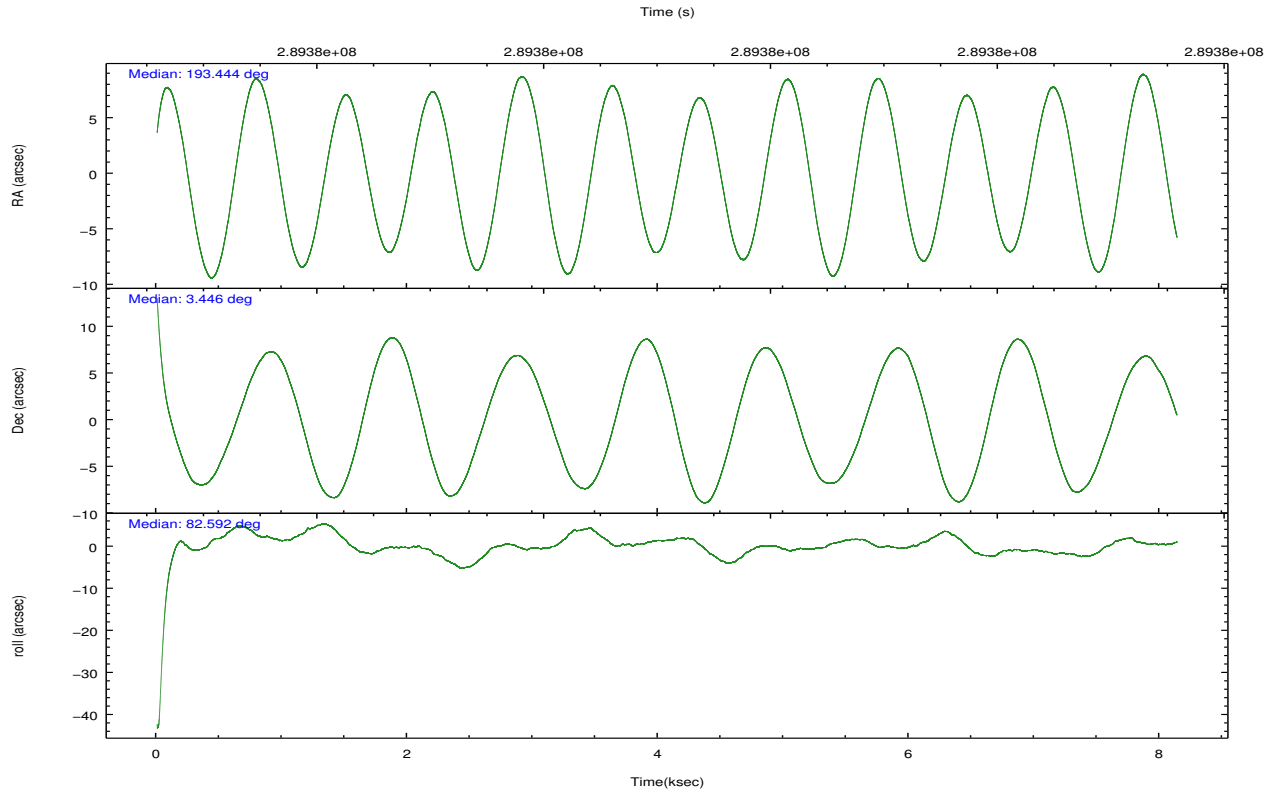
	ccd 2	ccd 3	ccd 6	ccd 7	ccd 8
grade 0 events	4123	3963	3833	4631	7012
	5%	5%	4%	4%	6%
grade 1 events	53	41	36	174	67
	0%	0%	0%	0%	0%
grade 2 events	1889	1825	2021	9480	5107
	2%	2%	2%	8%	5%
grade 3 events	904	878	921	4099	2230
	1%	1%	1%	3%	2%
grade 4 events	825	876	872	4188	2115
	1%	1%	1%	3%	2%
grade 5 events	2954	3630	3717	10615	4939
	3%	4%	4%	9%	4%
grade 6 events	1518	1619	2005	24614	5644
	1%	2%	2%	22%	5%
grade 7 events	63675	63542	66487	52762	73125
	83%	83%	83%	47%	72%

2.2 Compared Parameters

Parameter	Planned	Actual	Parameter	Planned	Actual
Instrument	ACIS	ACIS	Obspar format version number	7	7
Detector	ACIS-23678	ACIS-23678	Obspar file type	PREDICTED	ACTUAL
Grating	NONE	NONE	Obspar update status	NONE	UPDATED
Data mode	VFAINT	VFAINT	CCD I0 on	N	N
Observation mode	POINTING	POINTING	CCD I1 on	N	N
[deg] Pointing RA	193.454789	193.4439427087904	CCD I2 on	O1	Y
[deg] Pointing Dec	3.421118	3.446239456763891	CCD I3 on	O2	Y
[deg] Pointing Roll	82.433232	82.5904536154632	CCD S0 on	N	N
[mm] SIM focus pos	-0.684267	-0.6828225247311905	CCD S1 on	N	N
[mm] SIM defocus	0	0.001444936568705701	CCD S2 on	O4	Y
[mm] SIM translation stage pos	-190.132523	-190.1425803651734	CCD S3 on	Y	Y
[mm] SIM translation stage offset	0	0.01005778216563158	CCD S4 on	O3	Y
[s] Observation start time (MET)	289375153.184000	289374049.07273	CCD S5 on	N	N
Observation start date	2007-03-04T05:58:08	2007-03-04T05:40:49	Number of optional ACIS chips dropped	0	0
[s] Observation end time (MET)	289383153.184000	289384224.24821	On-chip summing requested	N	N
Observation end date	2007-03-04T08:11:28	2007-03-04T08:30:24	Subarray requested	NONE	NONE
Read mode	TIMED	TIMED	Alternating exposures requested	N	N
			[s] Primary exposure time	0.000000	3.1

2.3 Aspect



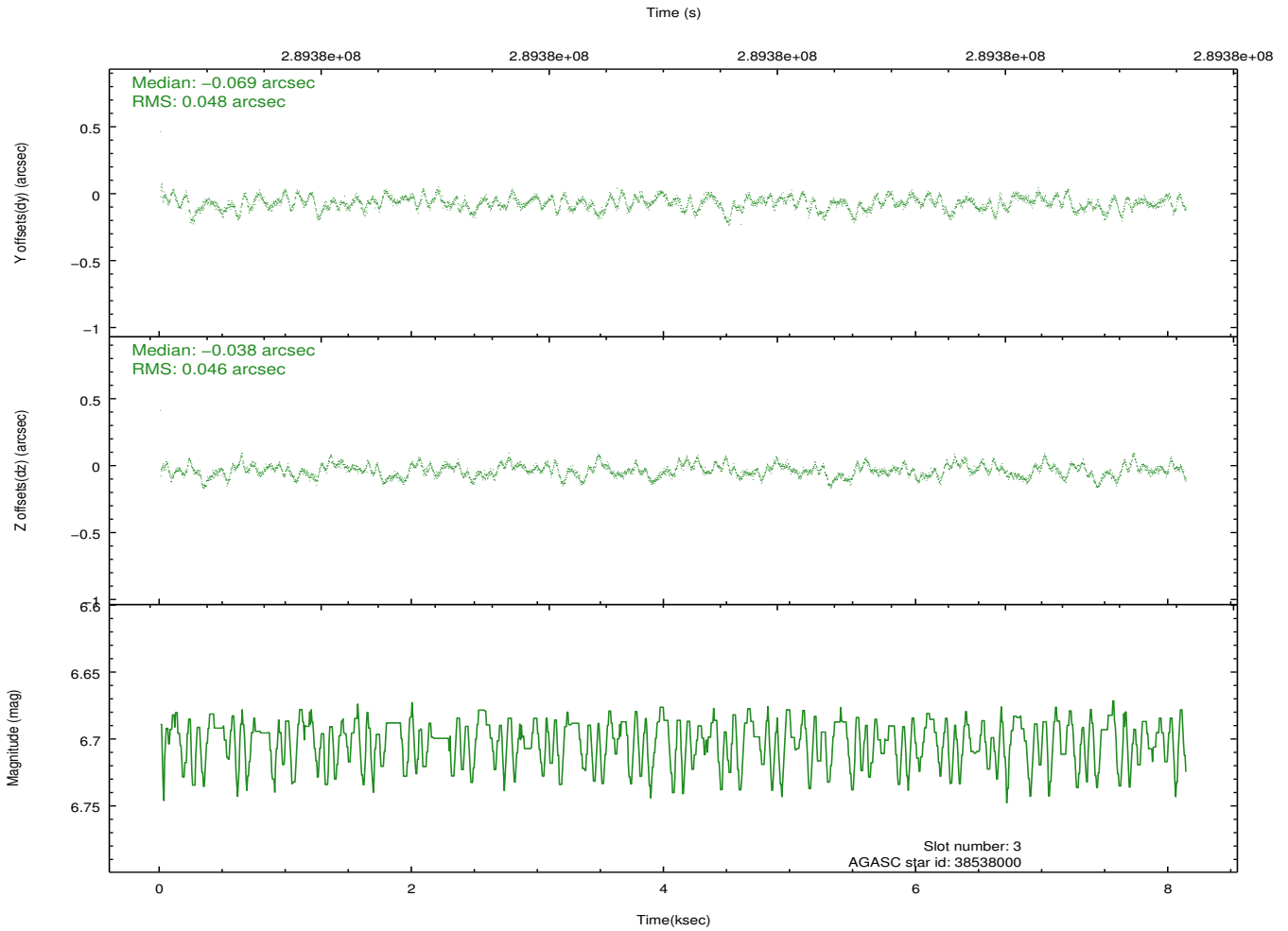
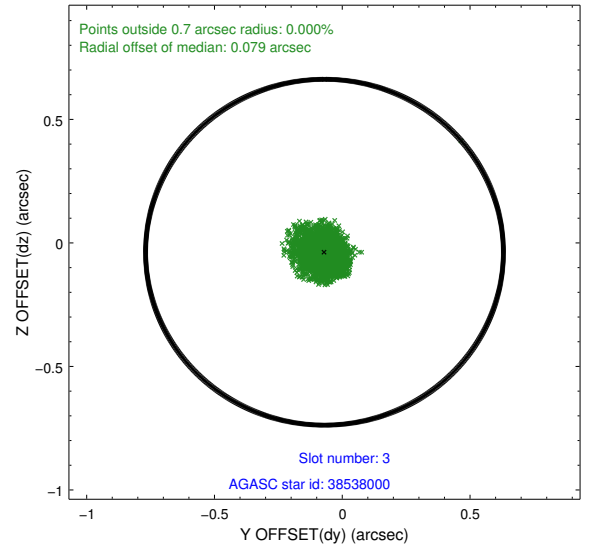
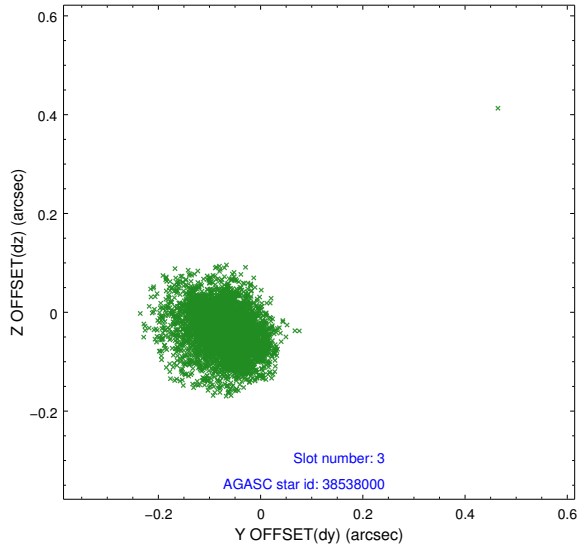


Slot Statistics

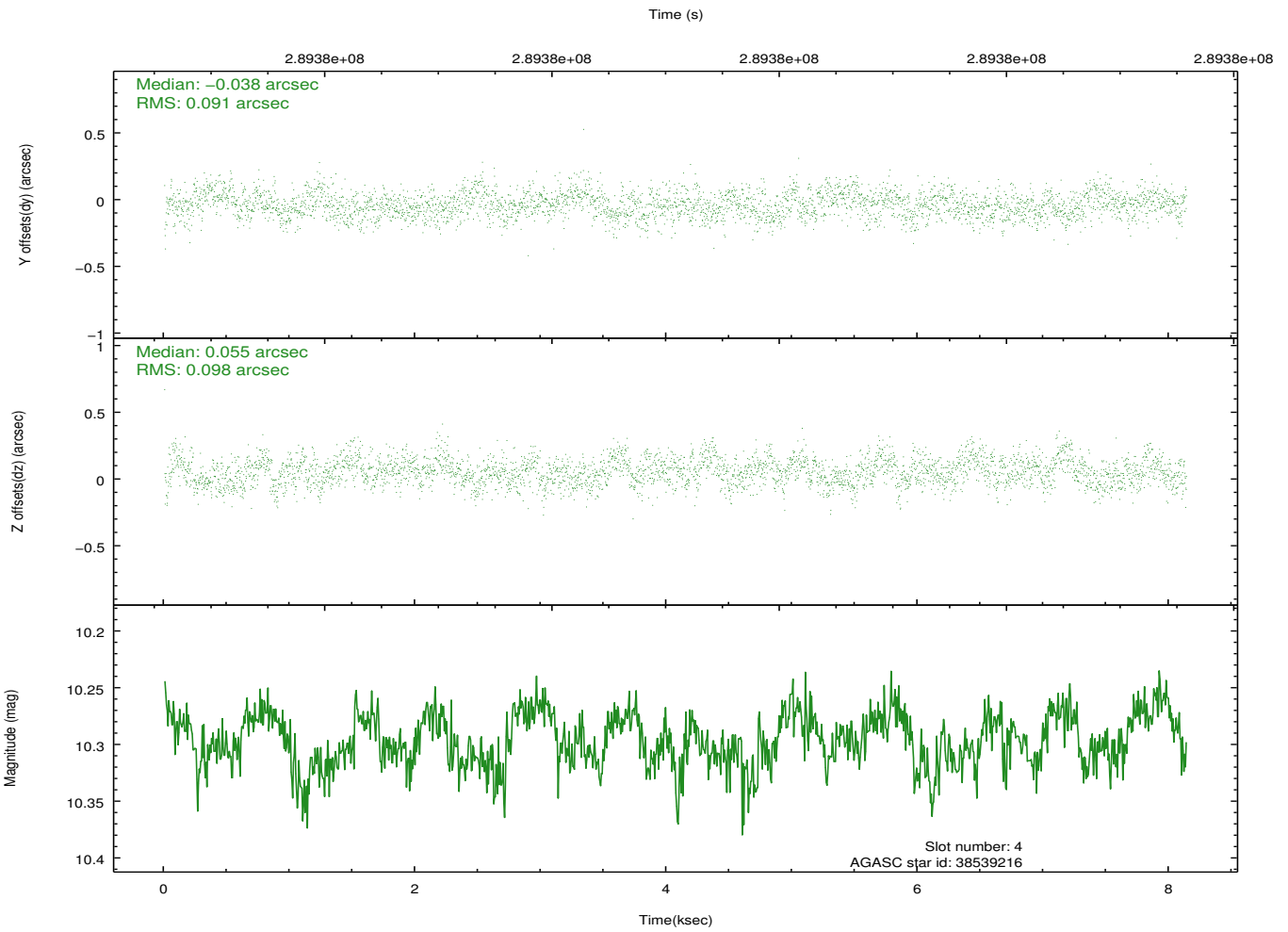
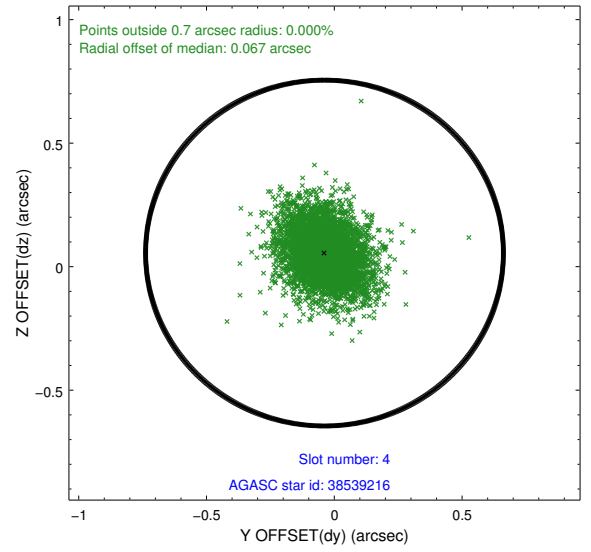
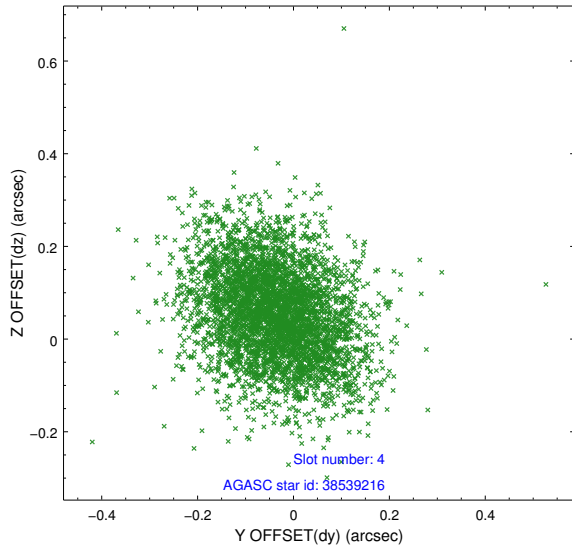
slot	status	id	mag	n_pts	med_dy	med_dz	dr1	dr2	ra	dec	mean_y	mean_z
0	FID	ACIS-S-2	7.09	1983	-0.079	-0.026	0.007	0.012	0.000000	0.000000	-767.27	-1736.72
1	FID	ACIS-S-4	7.19	1984	0.205	0.045	0.006	0.010	0.000000	0.000000	2145.95	171.15
2	FID	ACIS-S-5	7.23	1983	-0.157	-0.010	0.007	0.012	0.000000	0.000000	-1819.33	165.51
3	GUIDE	38538000	6.70	3969	-0.069	-0.038	0.071	0.115	193.796208	3.049322	-1164.54	-1392.56
4	GUIDE	38539216	10.29	3960	-0.038	0.055	0.141	0.234	193.526780	3.663616	899.83	-141.48
5	GUIDE	38540136	9.79	3961	0.130	0.053	0.110	0.173	193.519943	2.931230	-1716.90	-463.61
6	GUIDE	38540280	9.85	3963	0.056	-0.132	0.126	0.211	193.709008	3.641441	906.95	-800.75
7	GUIDE	38540320	9.68	3964	-0.080	0.063	0.117	0.193	193.646869	4.060565	2373.30	-380.57

2.4 Star Slots

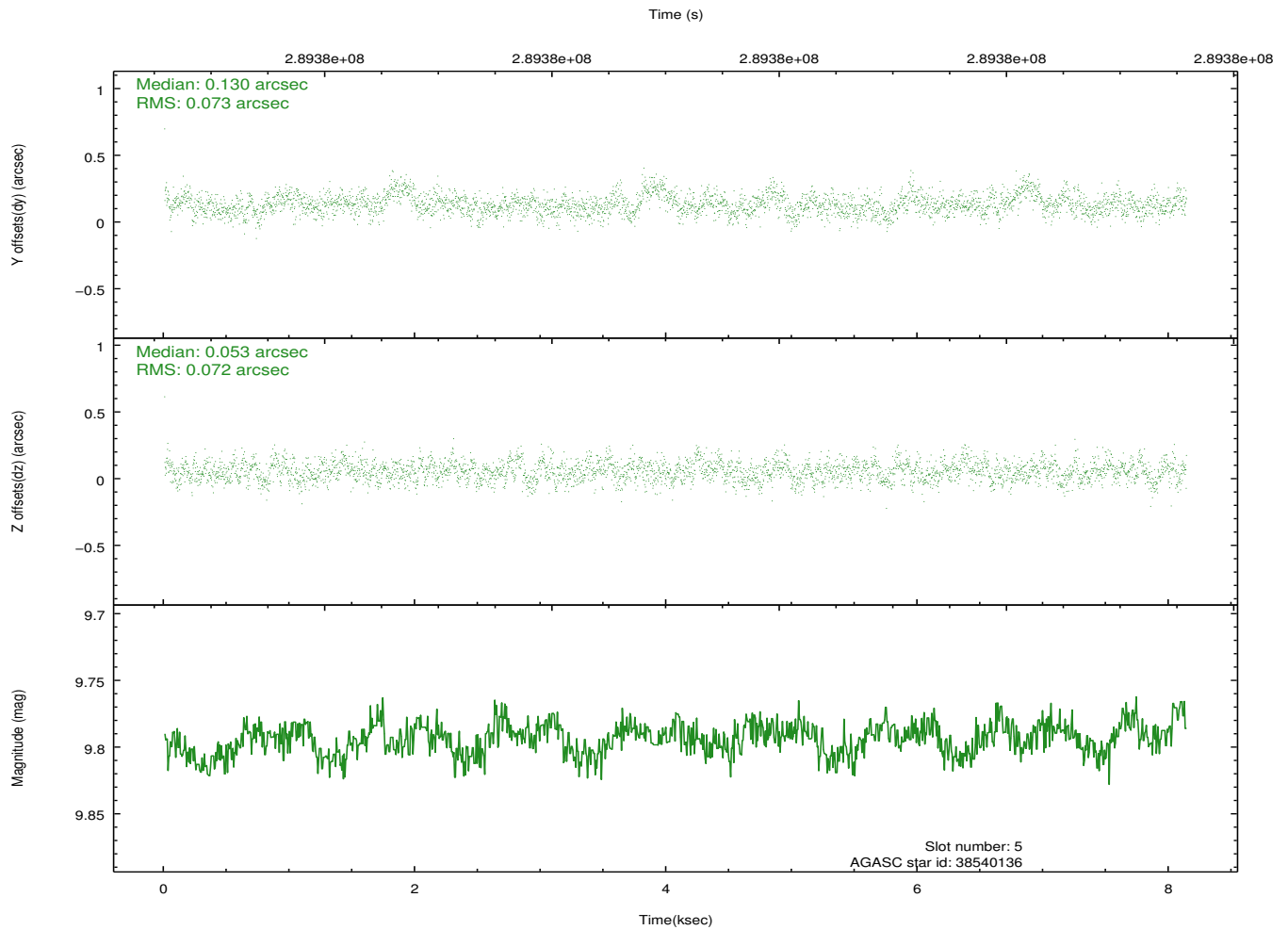
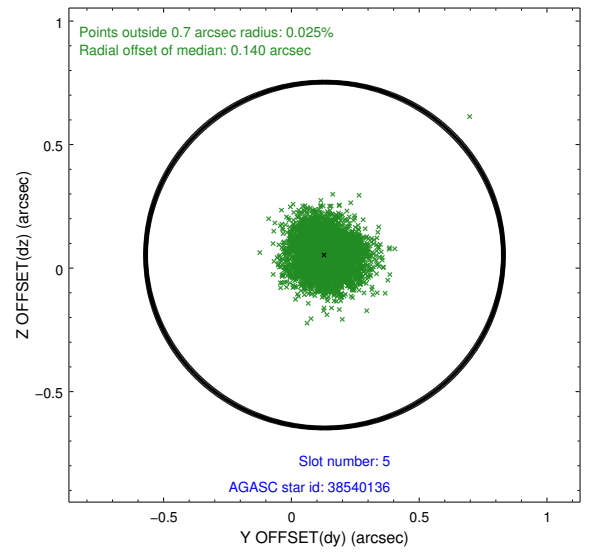
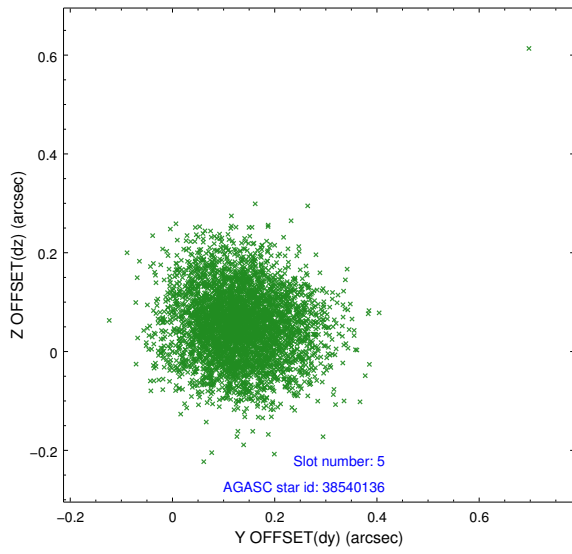
2.4.1 Slot 3



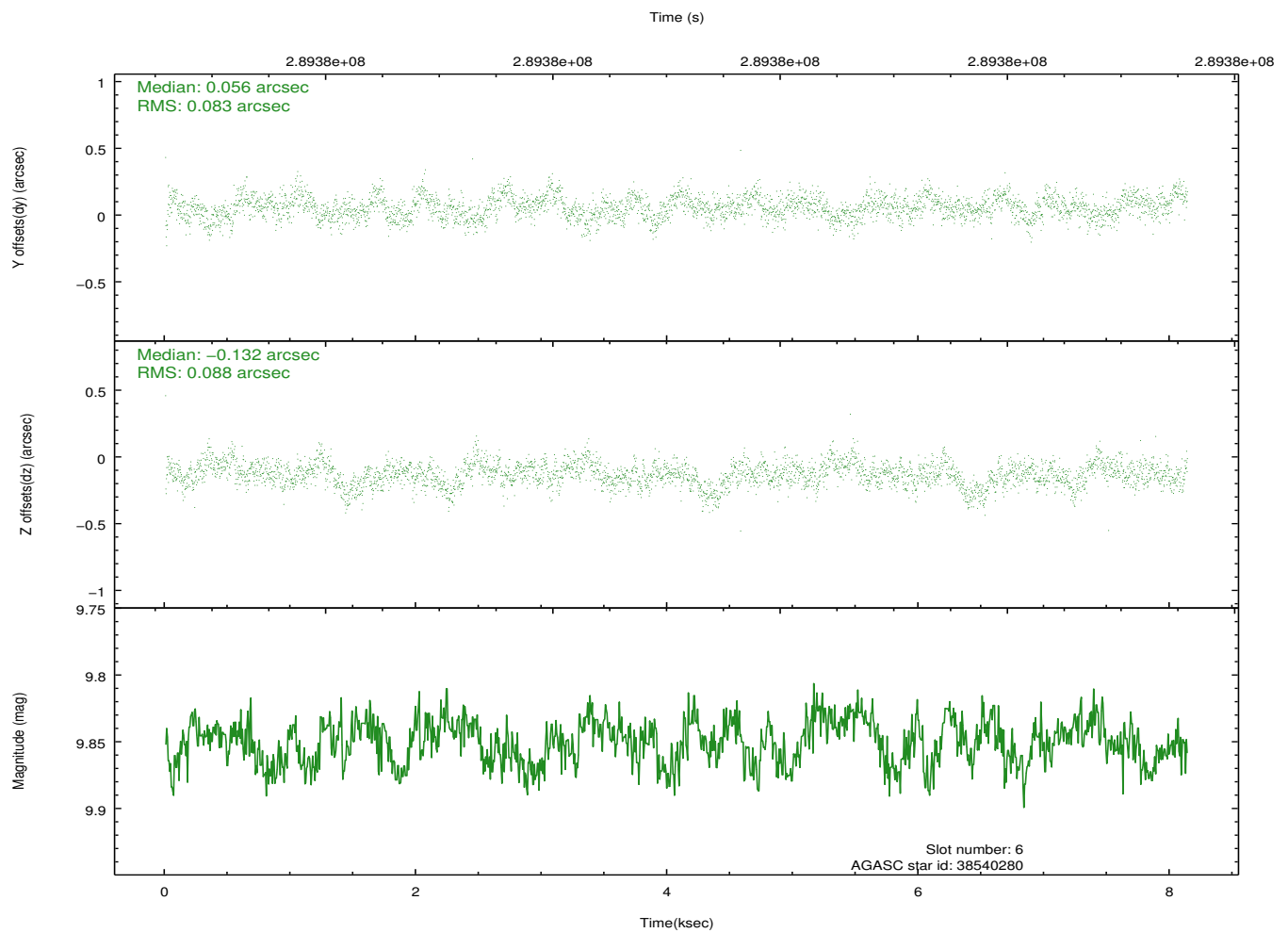
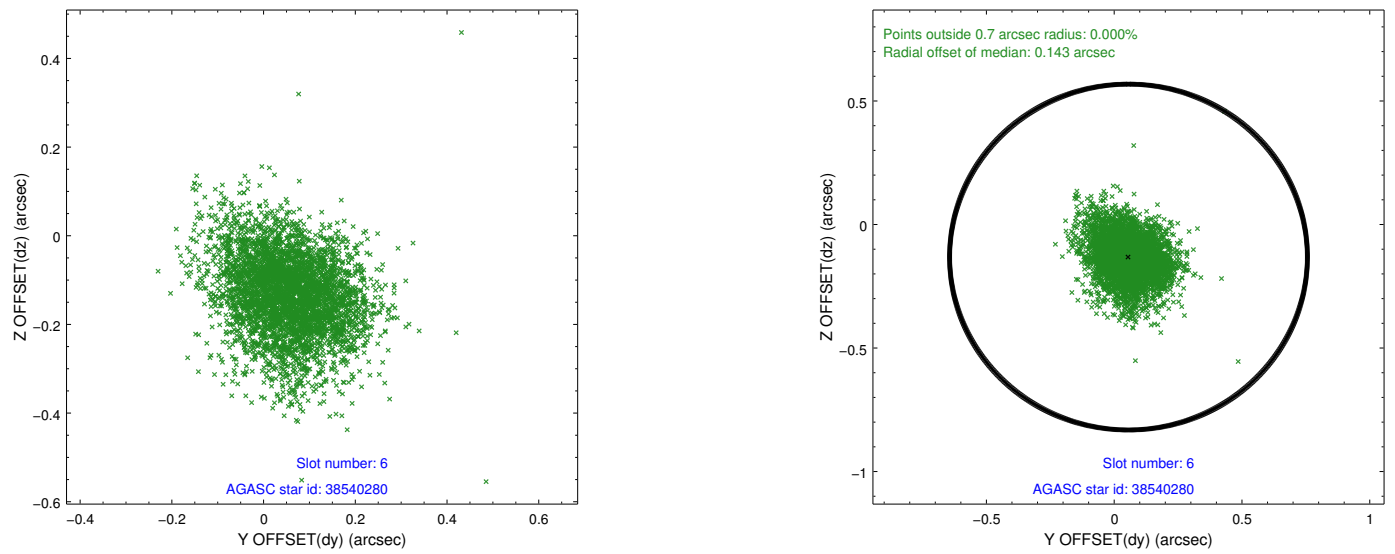
2.4.2 Slot 4



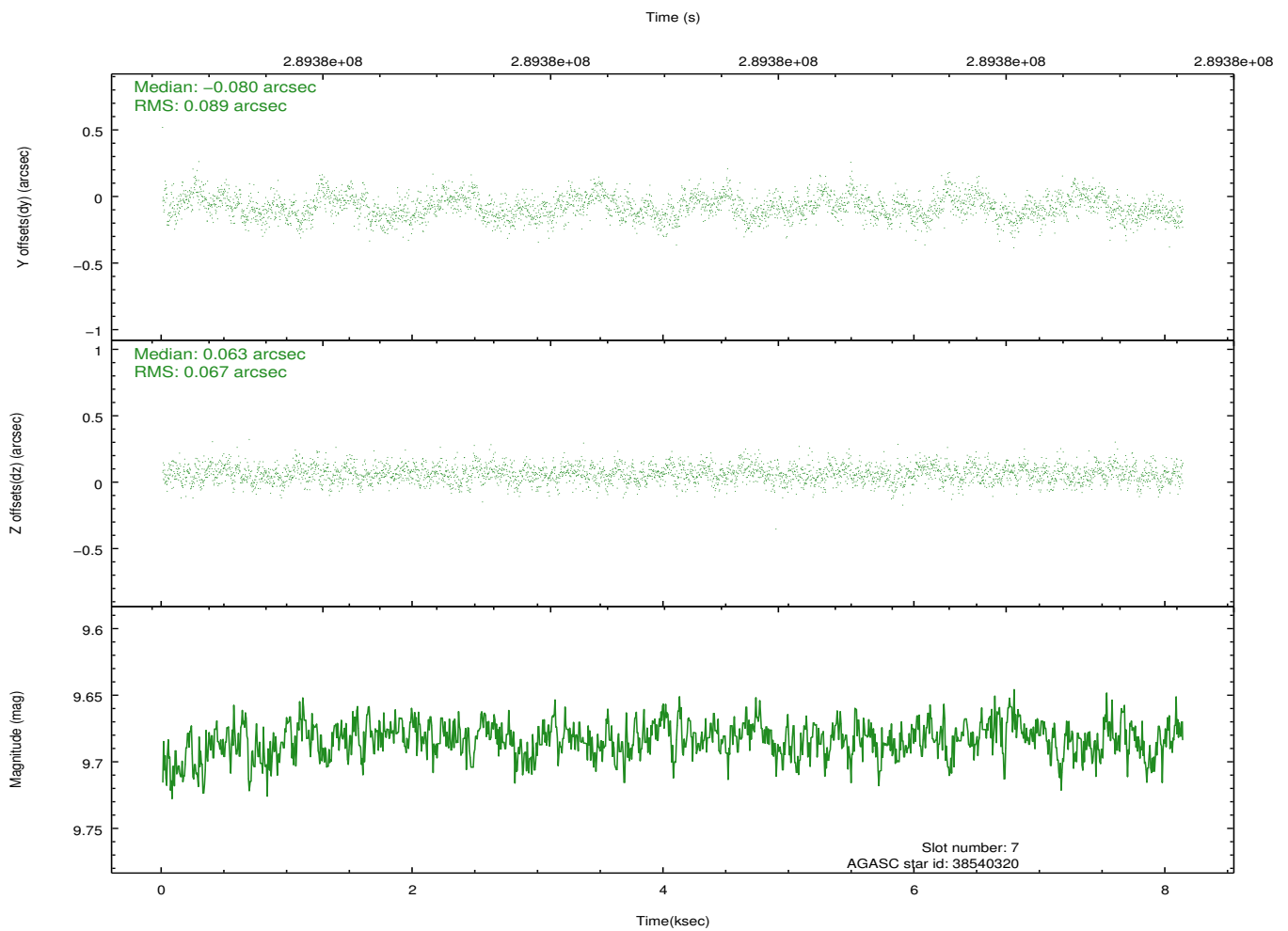
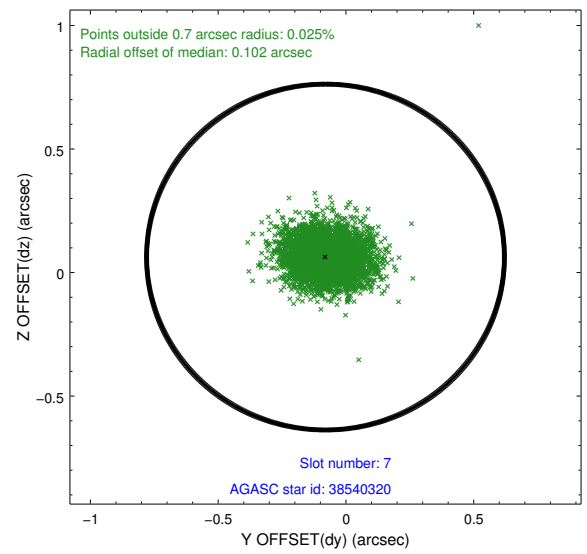
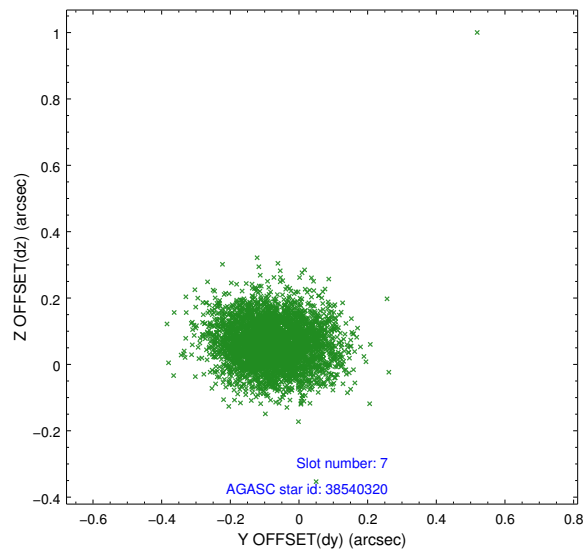
2.4.3 Slot 5



2.4.4 Slot 6

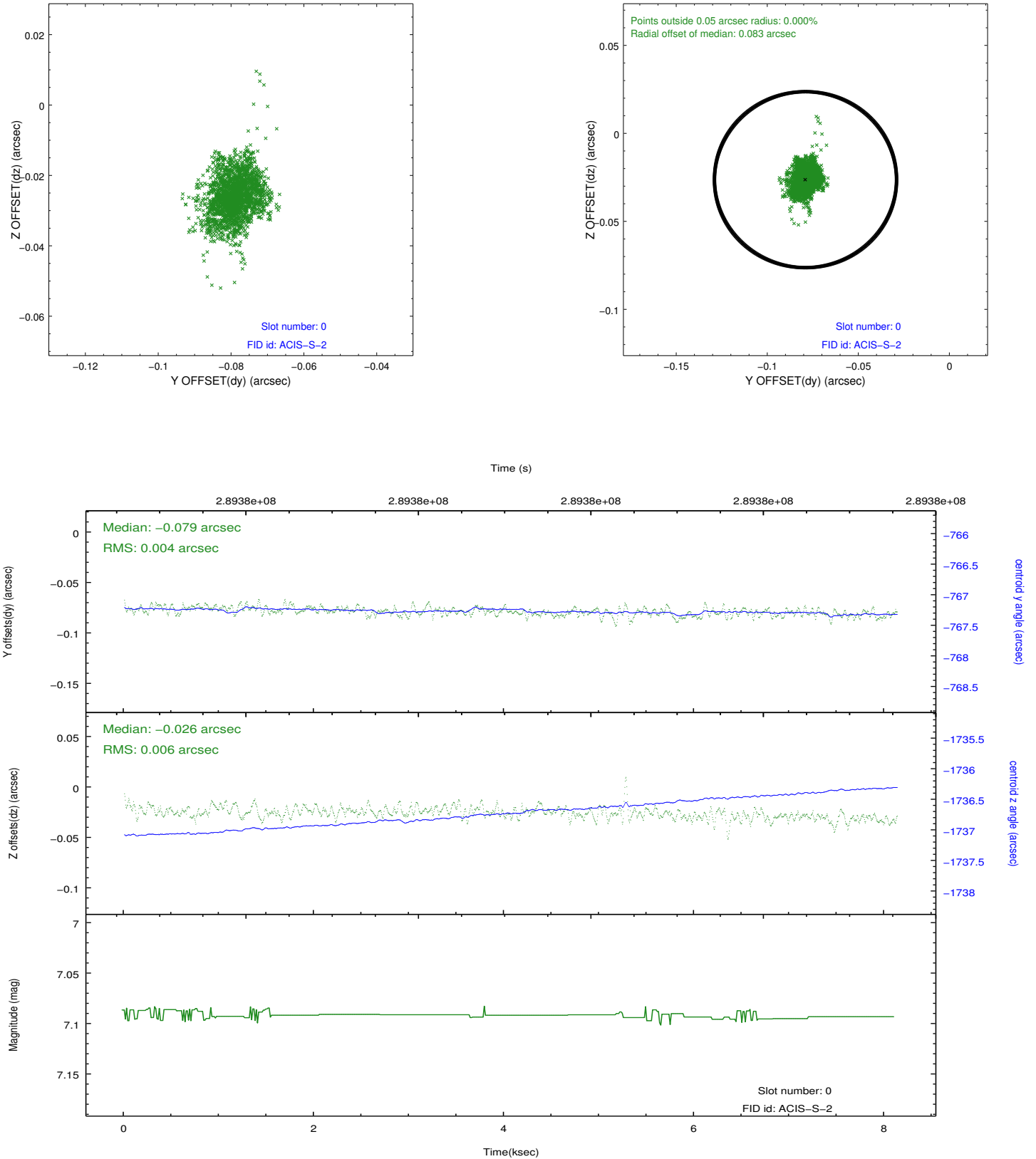


2.4.5 Slot 7

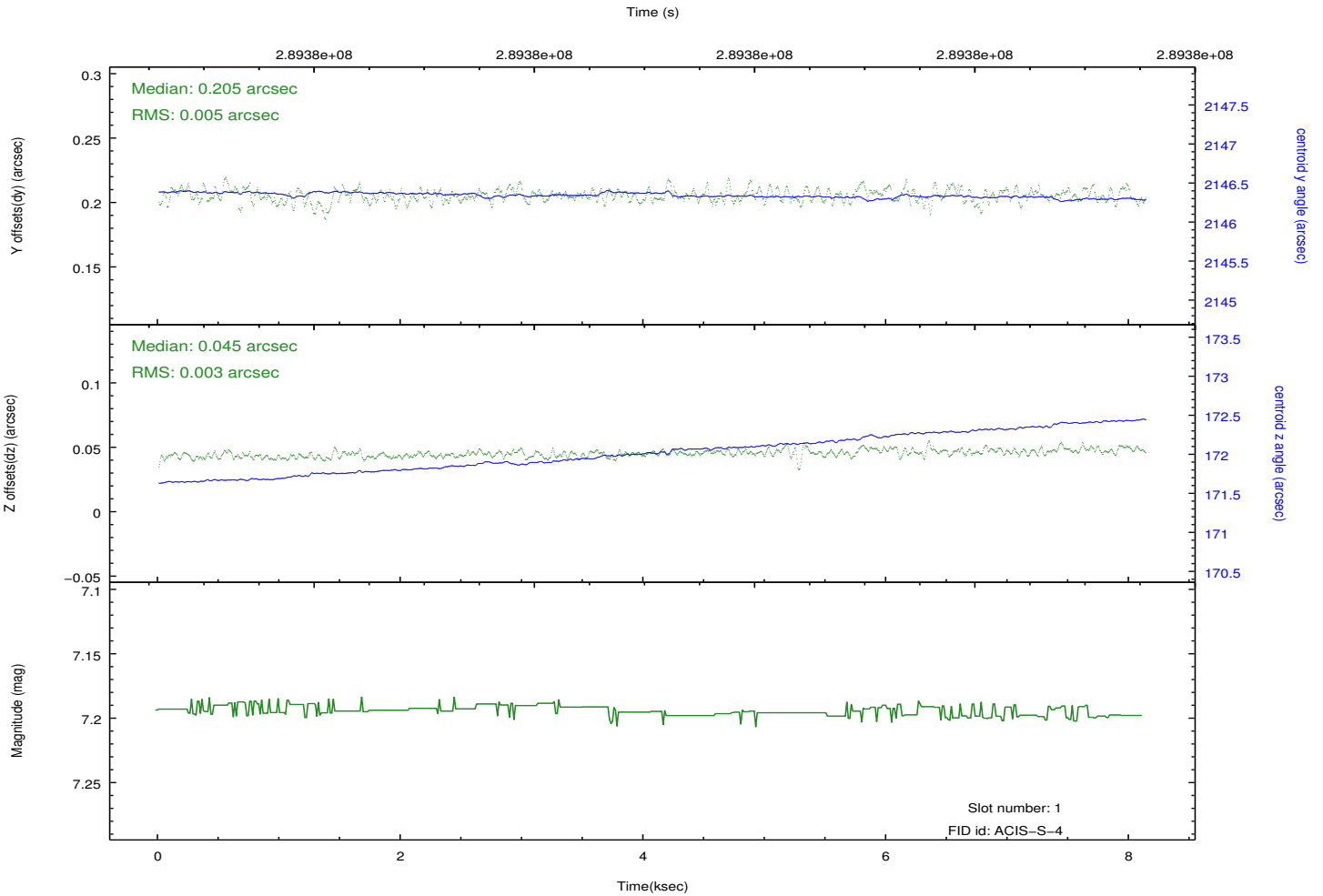
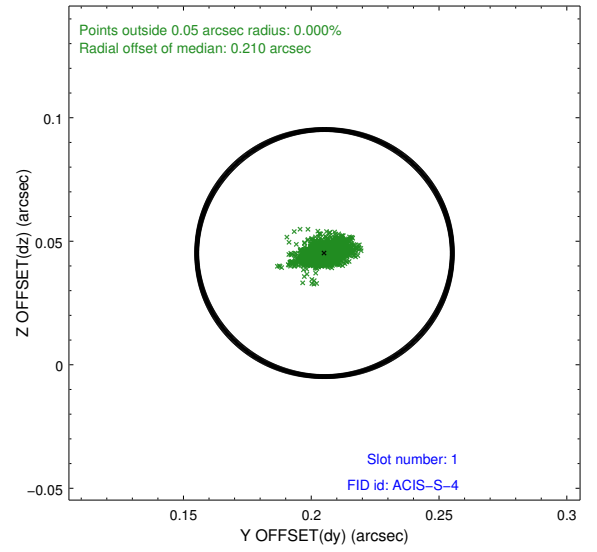
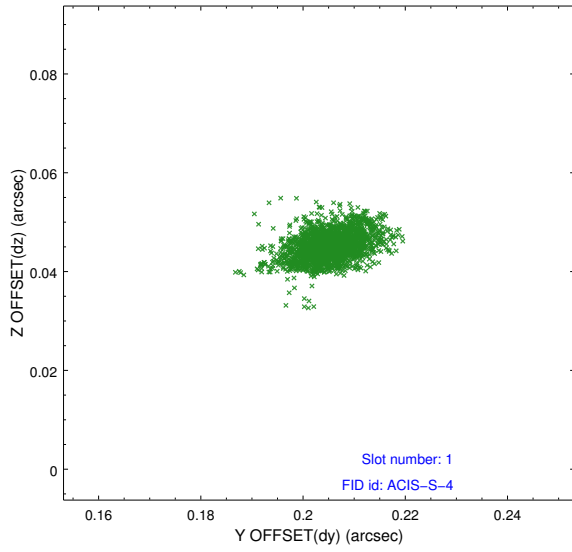


2.5 FID Slots

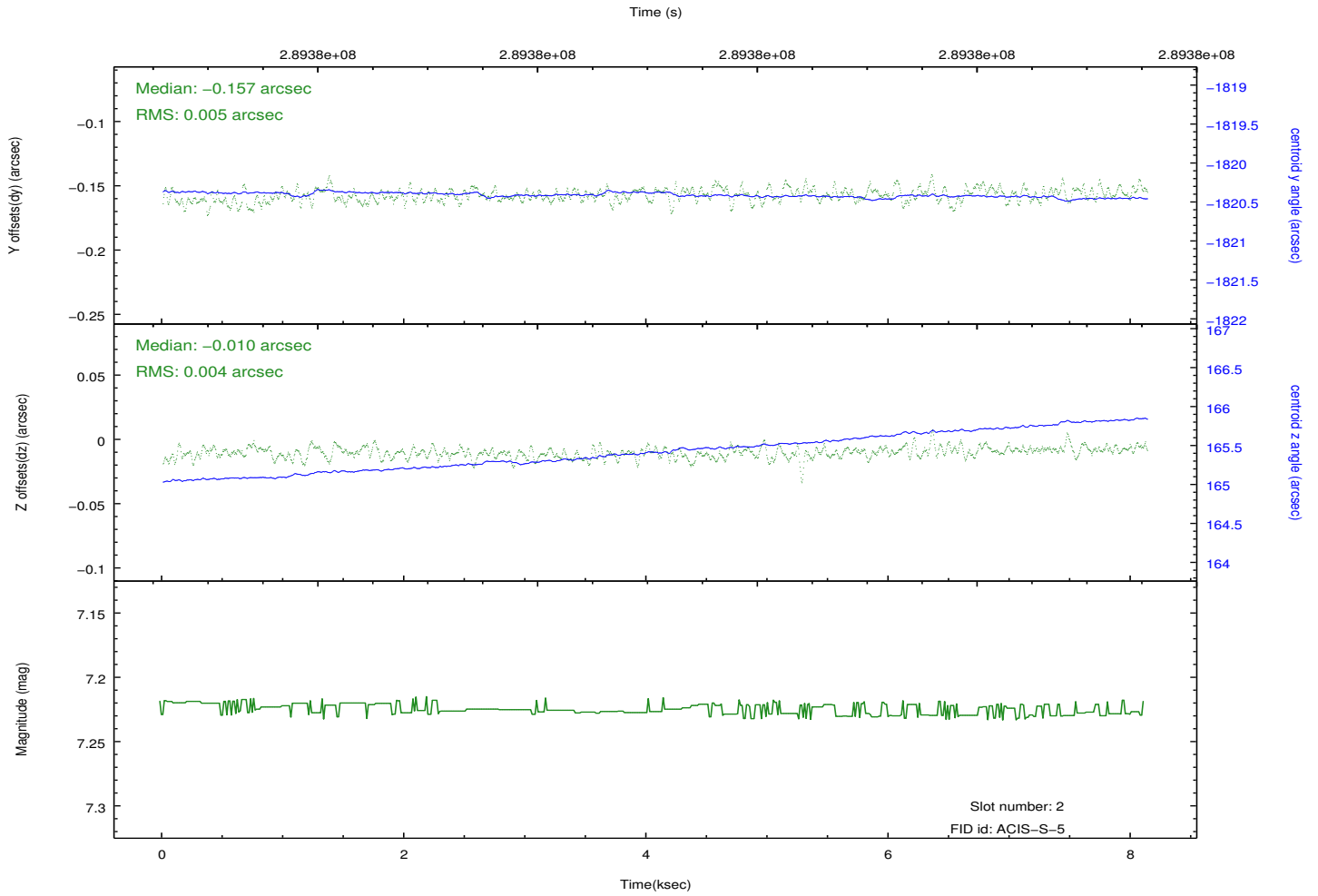
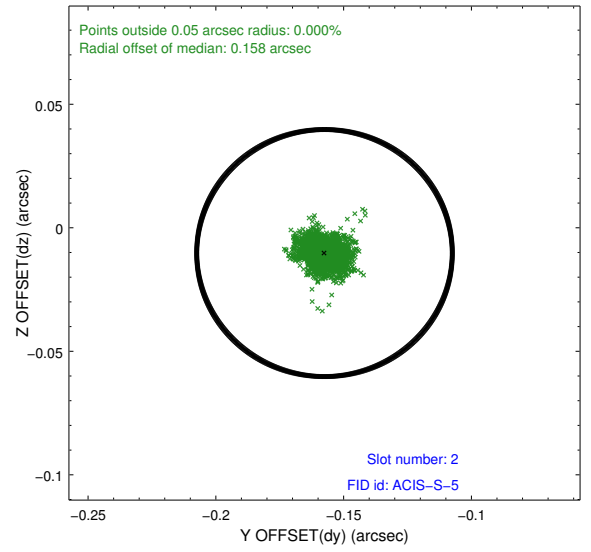
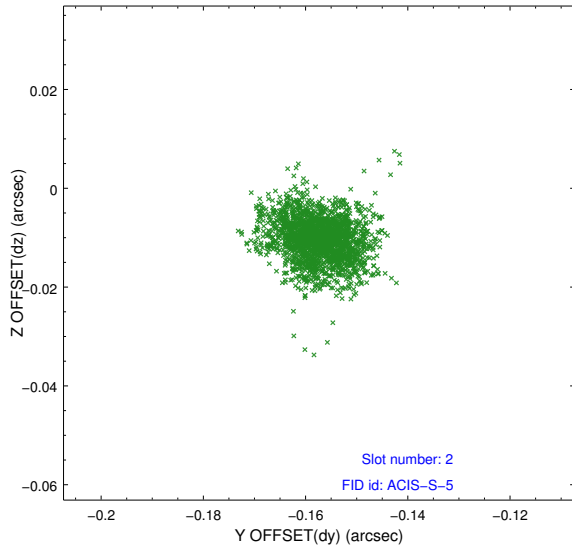
2.5.1 Slot 0



2.5.2 Slot 1



2.5.3 Slot 2



A Summary

A.1 Status

V&V Scientist	Beth Sundheim
V&V Date (YYYY-MM-DD)	2012.04.22
V&V Edition	1
V&V Disposition and Status	OK
V&V Charge Time	8.12820006

A.2 Comments

Joint proposal with NRAO.