

V&V Reference Report

L2 ASCDS Version : 8.4.4

Observation 8377 - L2 Version 4
Chandra X-Ray Center

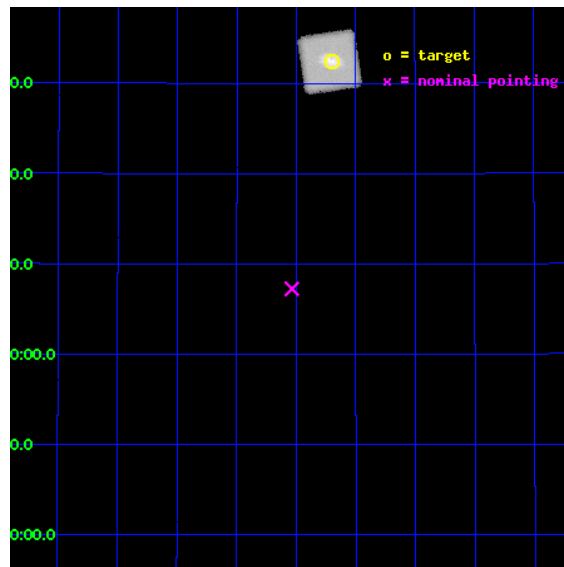
L2 Processing Date : Aug 12 2012

Contents

1	Front	2
2	OBI	3
2.1	OBI	3
2.1.1	Images	3
2.1.2	Parameters	4
2.1.3	Events	4
2.2	Compared Parameters	5
2.3	Aspect	6
2.4	Star Slots	9
2.4.1	Slot 3	9
2.4.2	Slot 4	10
2.4.3	Slot 5	11
2.4.4	Slot 6	12
2.4.5	Slot 7	13
2.5	FID Slots	14
2.5.1	Slot 0	14
2.5.2	Slot 1	15
A	Summary	16
A.1	Status	16
A.2	Comments	16

1 Front

seq_num	990010	Sequence number
obs_id	8377	Observation id
title	AO8 Calibration Observations of the ACIS charged particle background	
observer	Dr. CXC Calibration	Principal investigator
object	31 Com	Source name
ra_targ	192.924667	Observer's specified target RA [deg]
dec_targ	27.540711	Observer's specified target Dec [deg]
ra_nom	193.00901619383	Nominal RA [deg]
dec_nom	27.12069424735	Nominal Dec [deg]
roll_nom	36.92976523414	Nominal Roll [deg]
revision	4	Processing version of data
ontime	48708.002352595	[s]
livetime	43853.018798023	Ontime multiplied by DTCOR
l2events	110374	Number of level 2 events

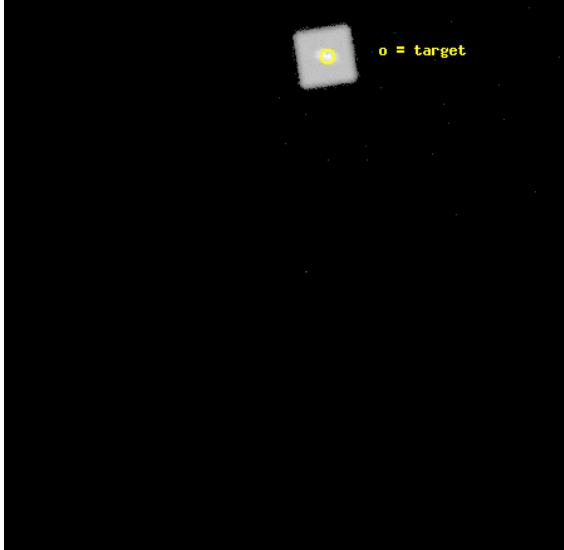


2 OBI

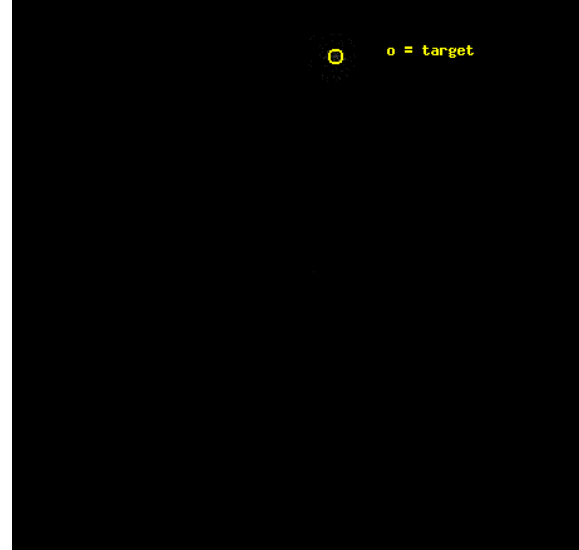
2.1 OBI

2.1.1 Images

Level 1 Image



Level 1 Bad Events



2.1.2 Parameters

obi_num	0	Obi number	sched_exp_time	48992.309000	[s] Scheduled observation exposure time
ascdsver	8.4.5	Processing system revision	ontime	48740.802352607	[s]
caldbver	4.5.1.1	 	l1events	171516	Number of level 1 events
date	2012-08-12T07:52:08	Date and time of file creation			
revision	4	Processing version of data			

2.1.3 Events

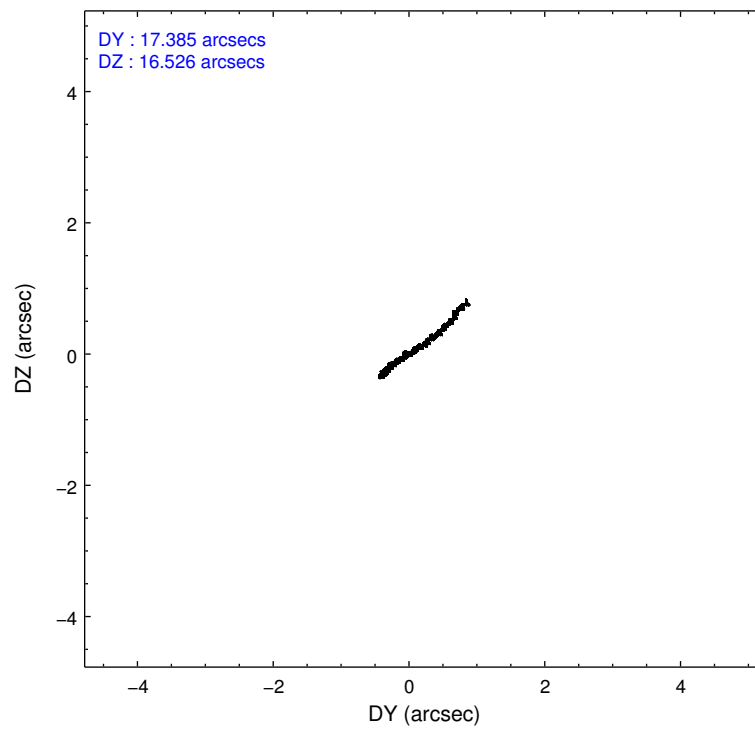
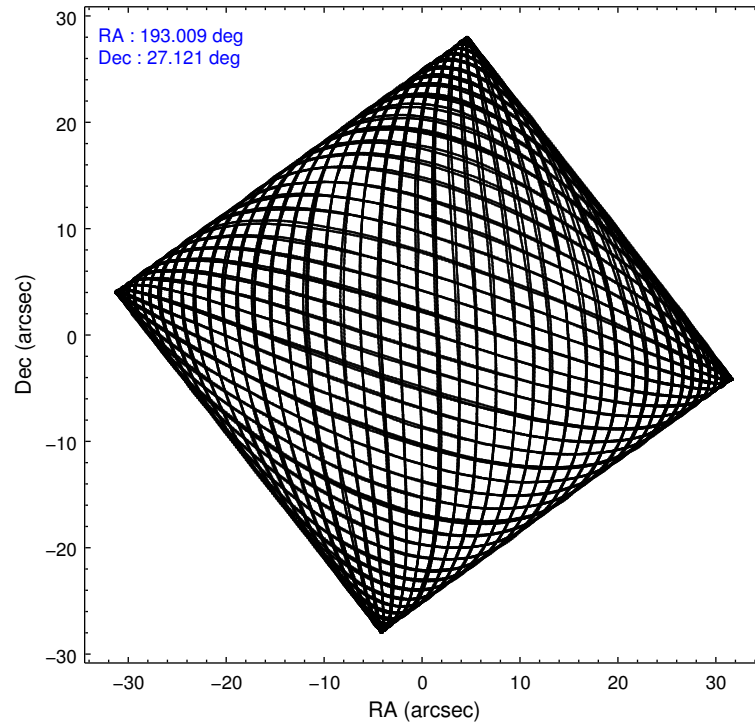
Level 1 Events

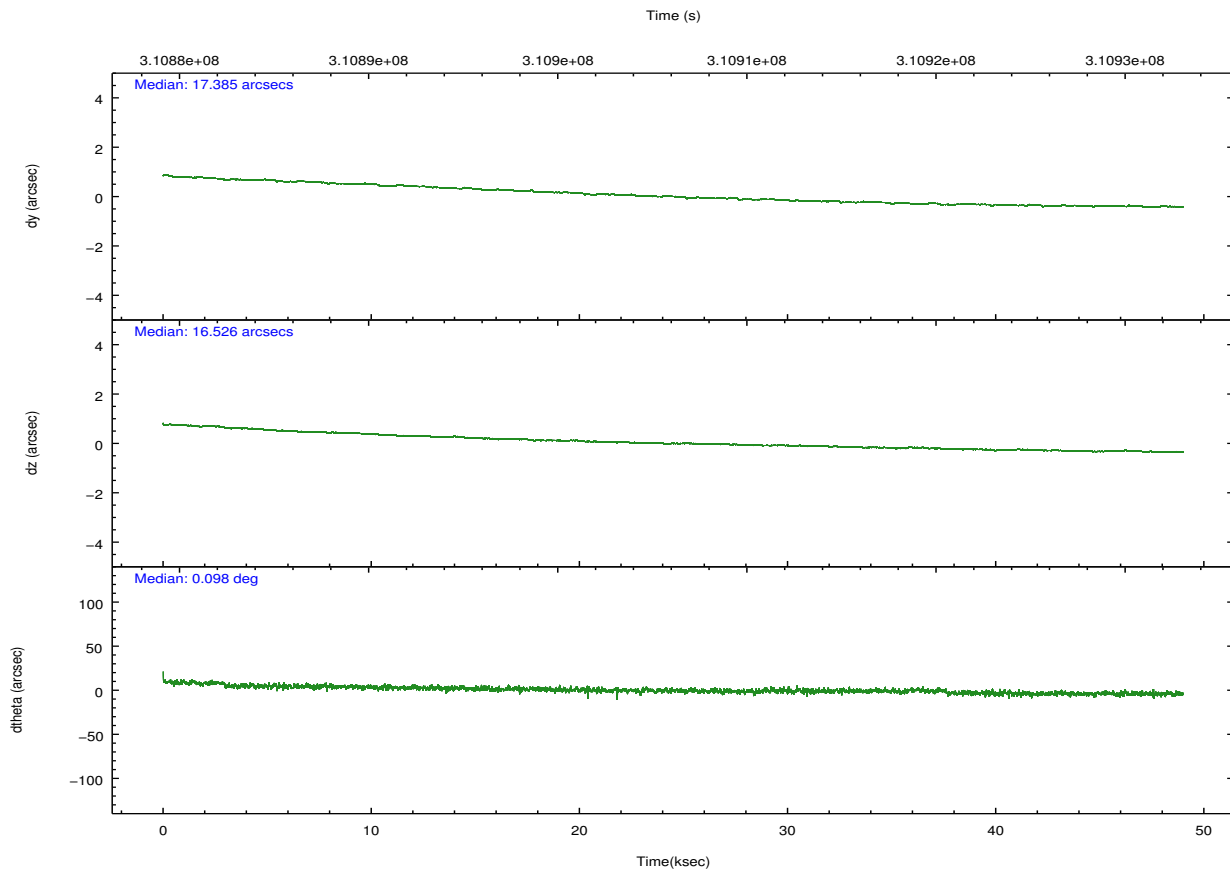
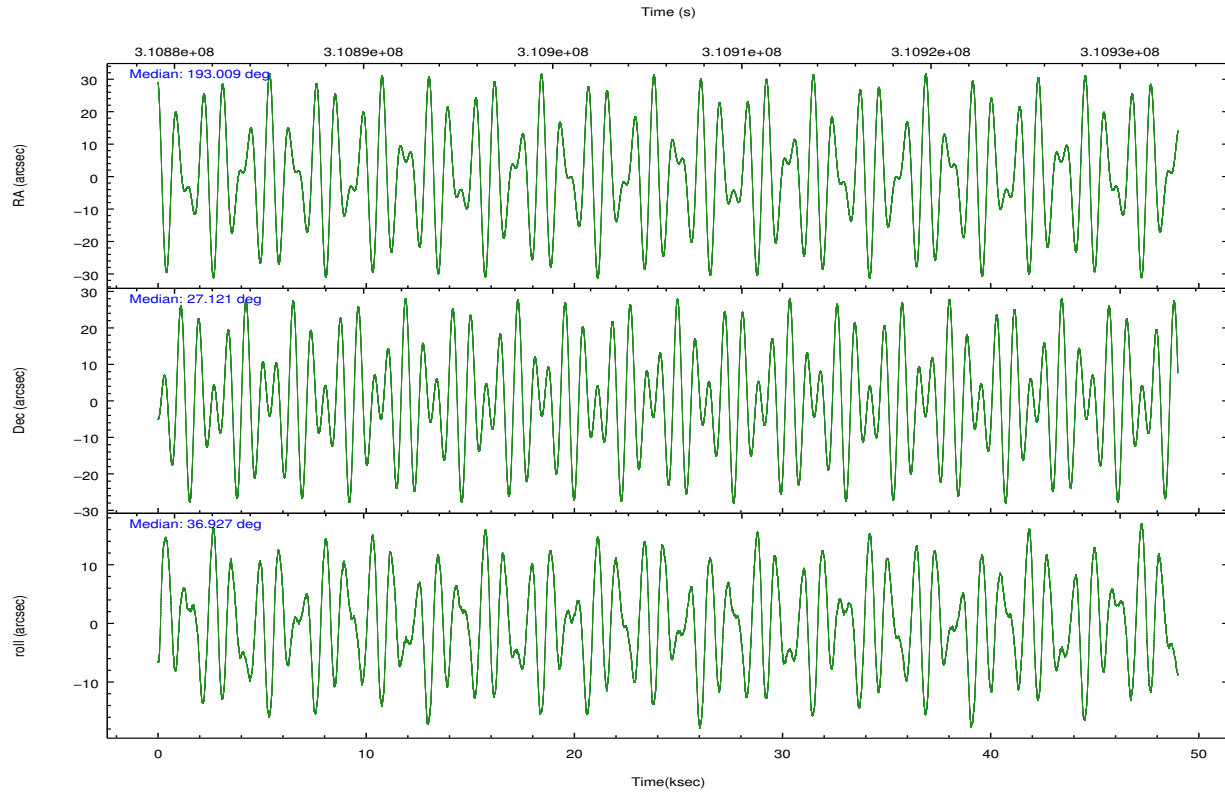
	segment 0
level 1 events	171516
rejected events	777
rejected %	0%

2.2 Compared Parameters

Parameter	Planned	Actual	Parameter	Planned	Actual
Instrument	HRC	HRC	Obspar format version number	7	7
Detector	HRC-I	HRC-I	Obspar file type	PREDICTED	ACTUAL
Grating	NONE	NONE	Obspar update status	OVERRIDE	OVERRIDE
Data mode	NEXT_IN_LINE	NEXT_IN_LINE			
Observation mode	POINTING	POINTING			
[deg] Pointing RA	193.0090163333567	193.0090161938287			
[deg] Pointing Dec	27.12069434271783	27.12069424734961			
[deg] Pointing Roll	36.92976515744538	36.92976523413967			
[s] Window start time (MET)	304992065.184000	304992065.184000			
[s] Window stop time (MET)	312768065.184000	312768065.184000			
[mm] SIM focus pos	-1.038866356238299	-1.038866356238299			
[mm] SIM defocus	0.00142623211714632	0.00142623211714632			
[mm] SIM translation stage pos	51.9960404362608	51.9960404362608			
[mm] SIM translation stage offset	74.989453869027	74.989453869027			
[s] Observation start time (MET)	310881604.184	310881604.184			
Observation start date	2007-11-08T03:58:59	2007-11-08T04:00:04			
[s] Observation end time (MET)	310930597.184	310930597.184			
Observation end date	2007-11-08T17:35:32	2007-11-08T17:36:37			

2.3 Aspect



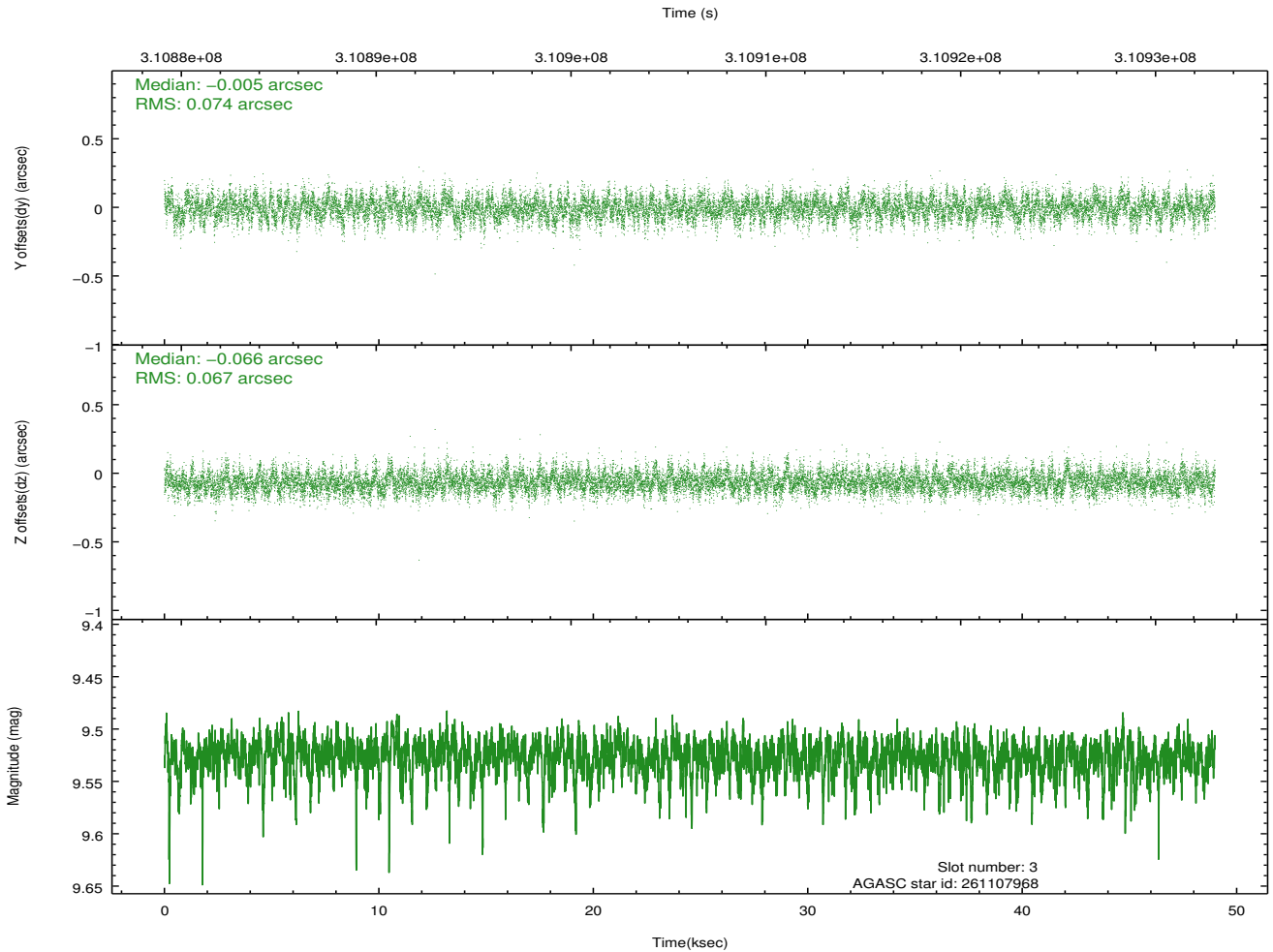
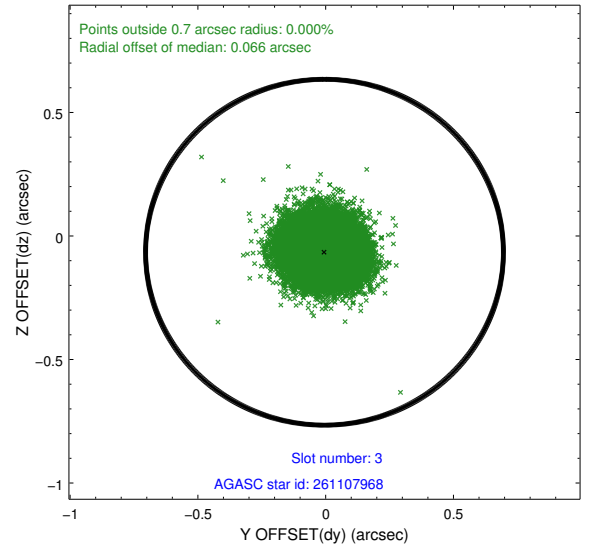
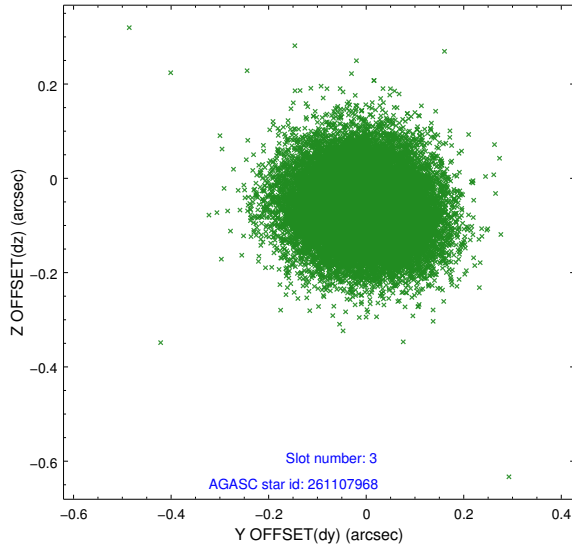


Slot Statistics

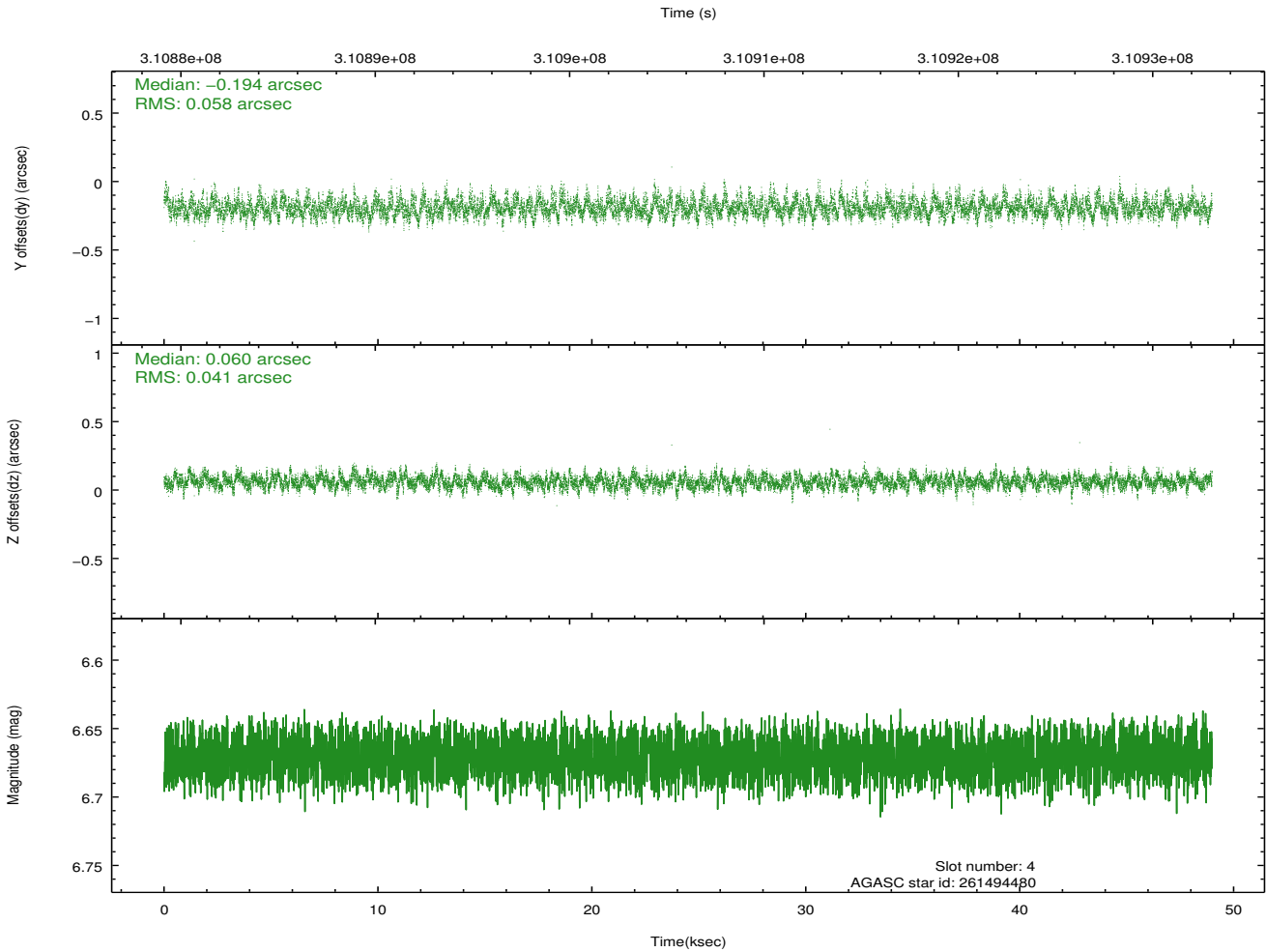
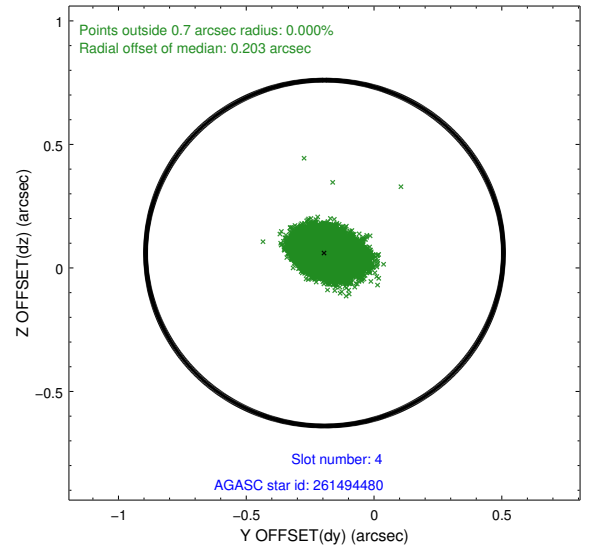
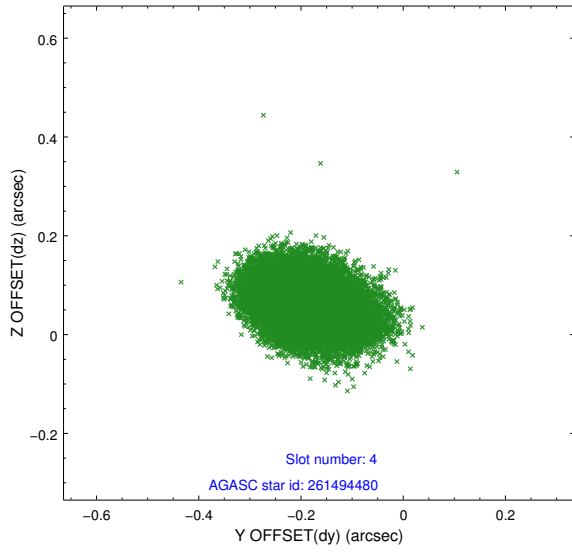
slot	status	id	mag	n_pts	med_dy	med_dz	dr1	dr2	ra	dec	mean_y	mean_z
0	FID	HRC-I-1	6.90	11944	-0.699	-0.029	0.010	0.018	0.000000	0.000000	-772.08	233.12
1	FID	HRC-I-2	7.01	11942	0.778	-0.025	0.010	0.018	0.000000	0.000000	838.88	234.20
2	UNUSED		0.00	0	0.000	0.000	0.000	0.000	0.000000	0.000000	0.00	0.00
3	GUIDE	261107968	9.53	23849	-0.005	-0.066	0.106	0.172	192.297173	26.884890	-2248.11	754.63
4	GUIDE	261494480	6.67	23892	-0.194	0.060	0.074	0.123	193.482276	26.779993	561.34	-1841.69
5	GUIDE	261504704	9.84	23716	-0.214	-0.221	0.144	0.229	193.257447	27.832310	2258.32	1620.60
6	GUIDE	261508488	9.46	23874	0.135	0.111	0.126	0.210	193.081632	26.490574	-1095.26	-1900.64
7	GUIDE	261508808	9.78	23859	0.274	0.114	0.136	0.215	192.778162	26.410640	-2048.82	-1541.26

2.4 Star Slots

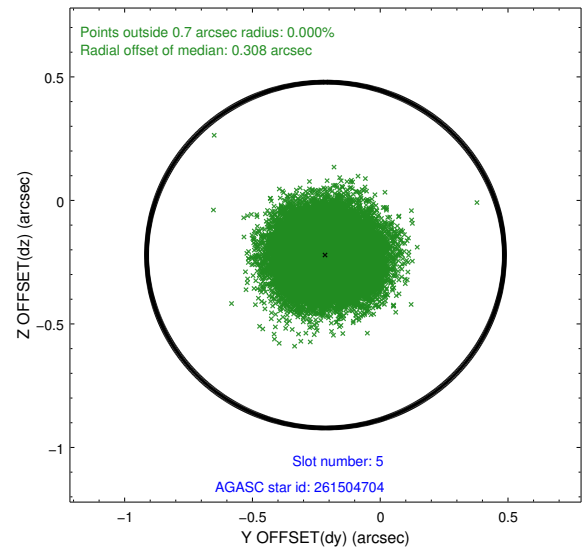
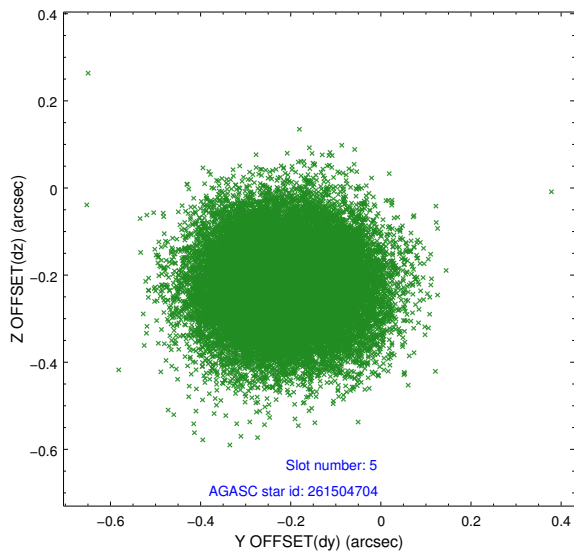
2.4.1 Slot 3



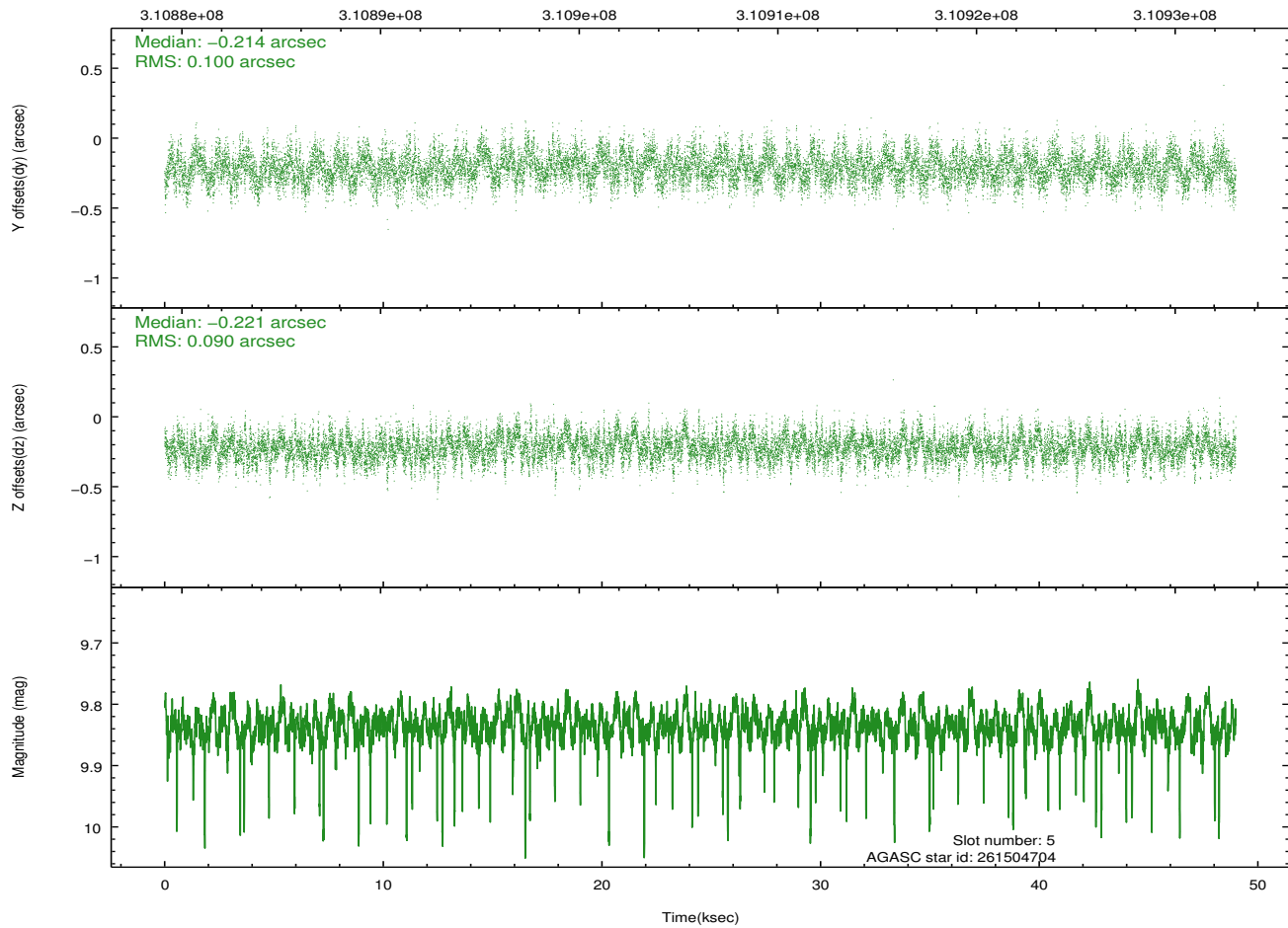
2.4.2 Slot 4



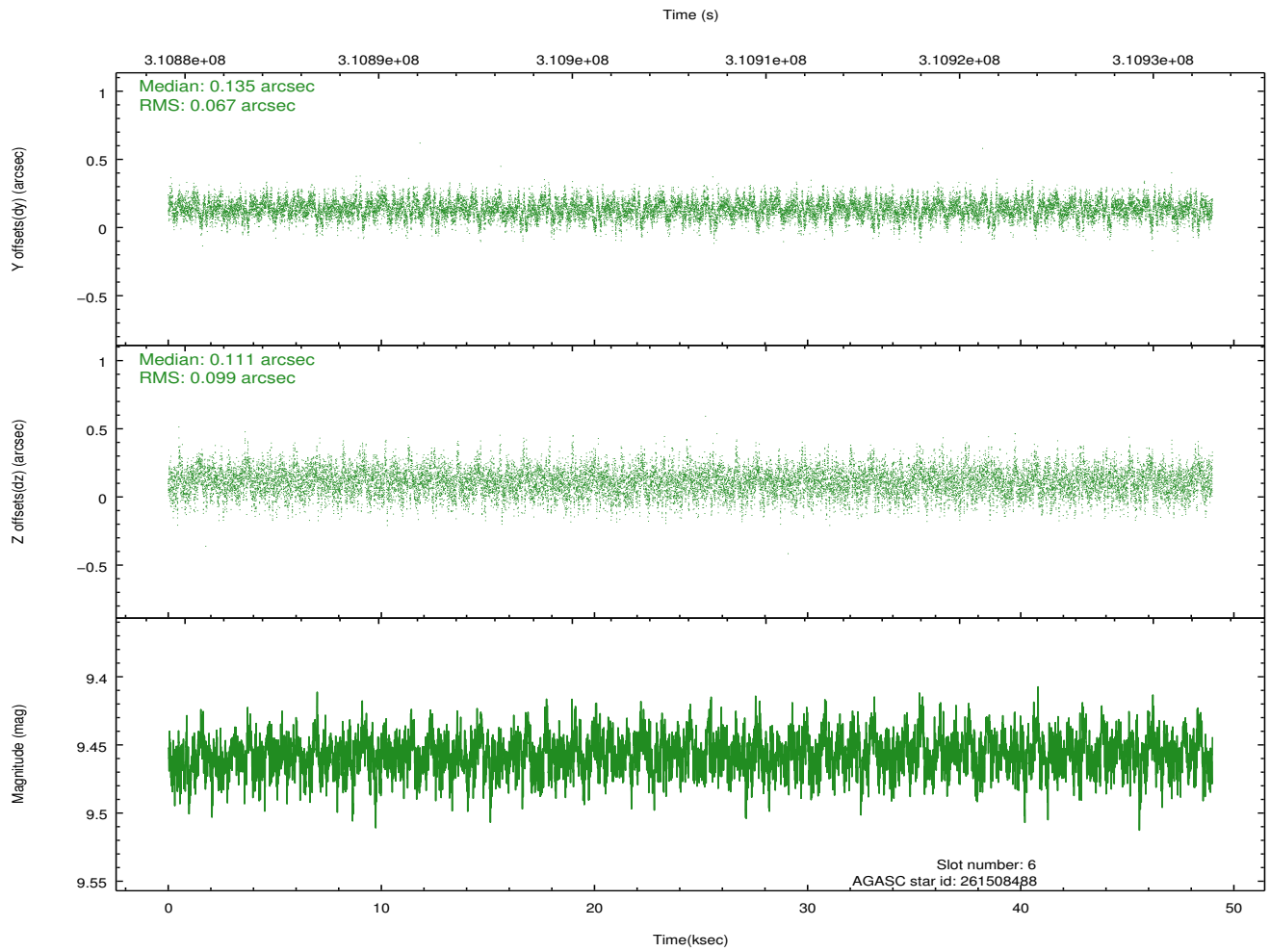
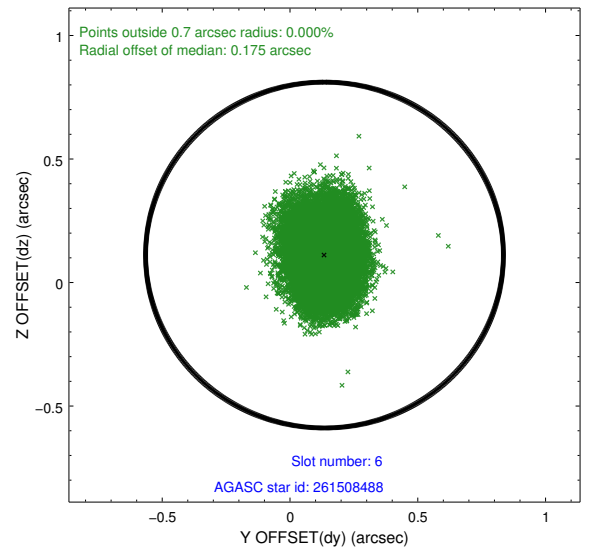
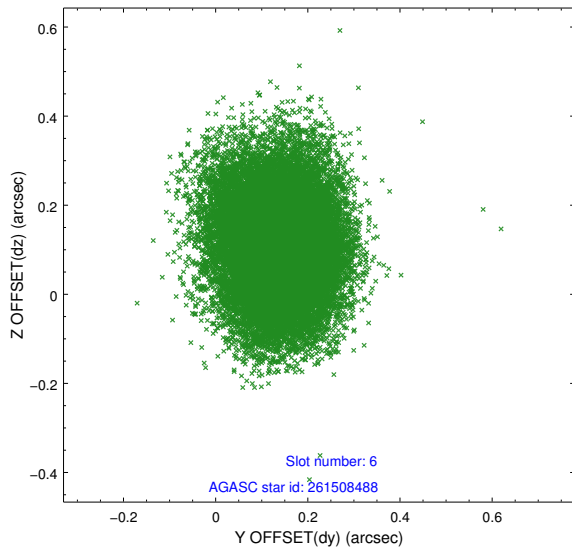
2.4.3 Slot 5



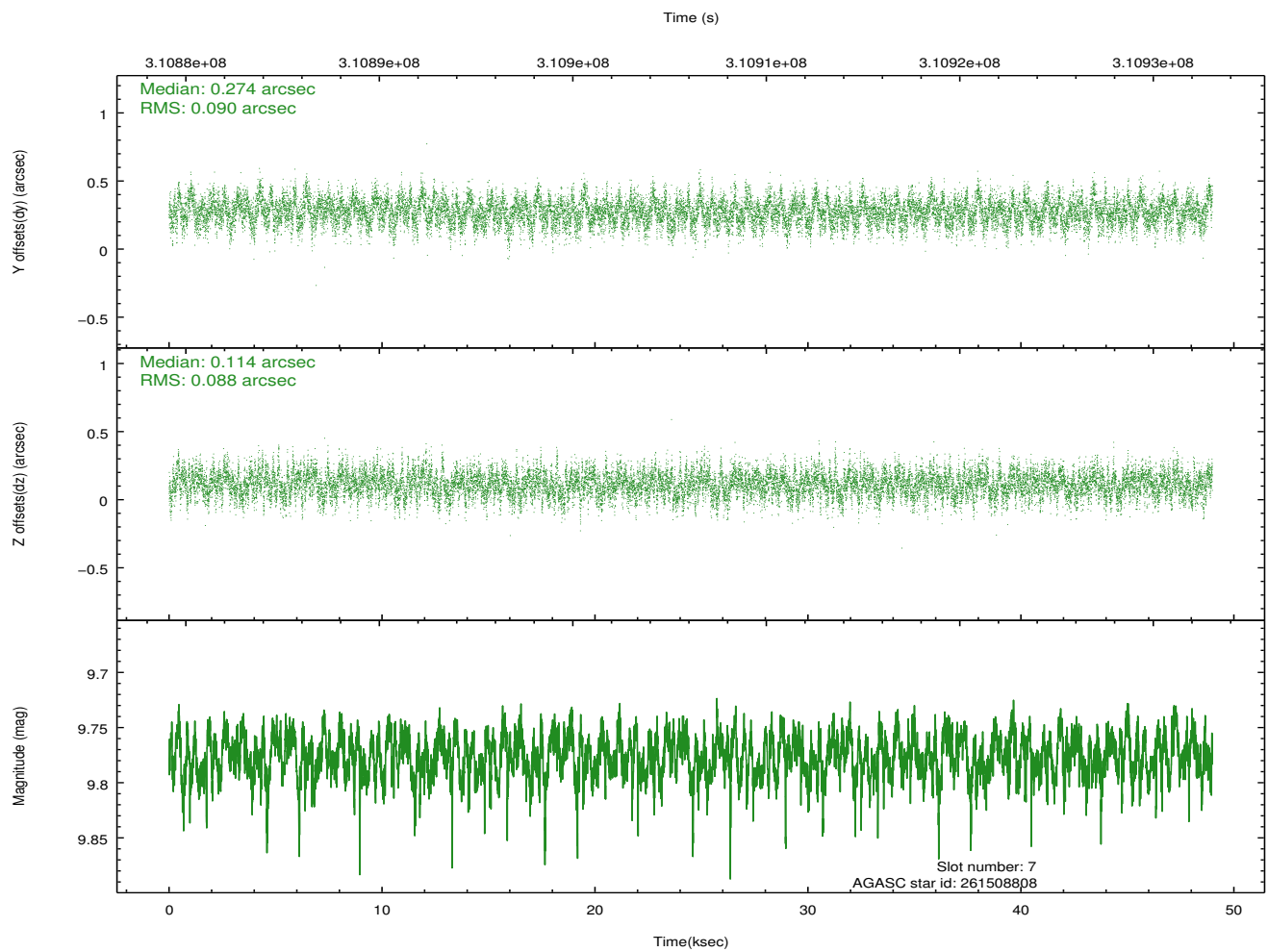
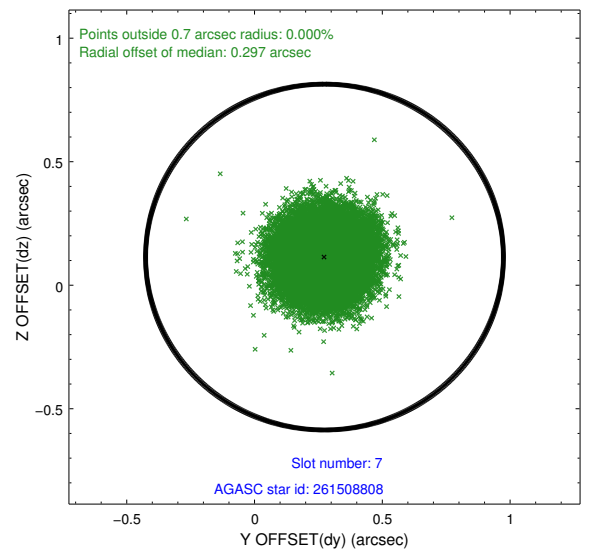
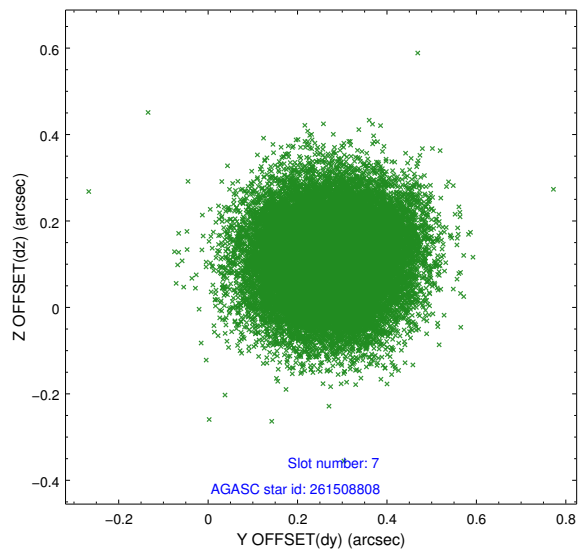
Time (s)



2.4.4 Slot 6

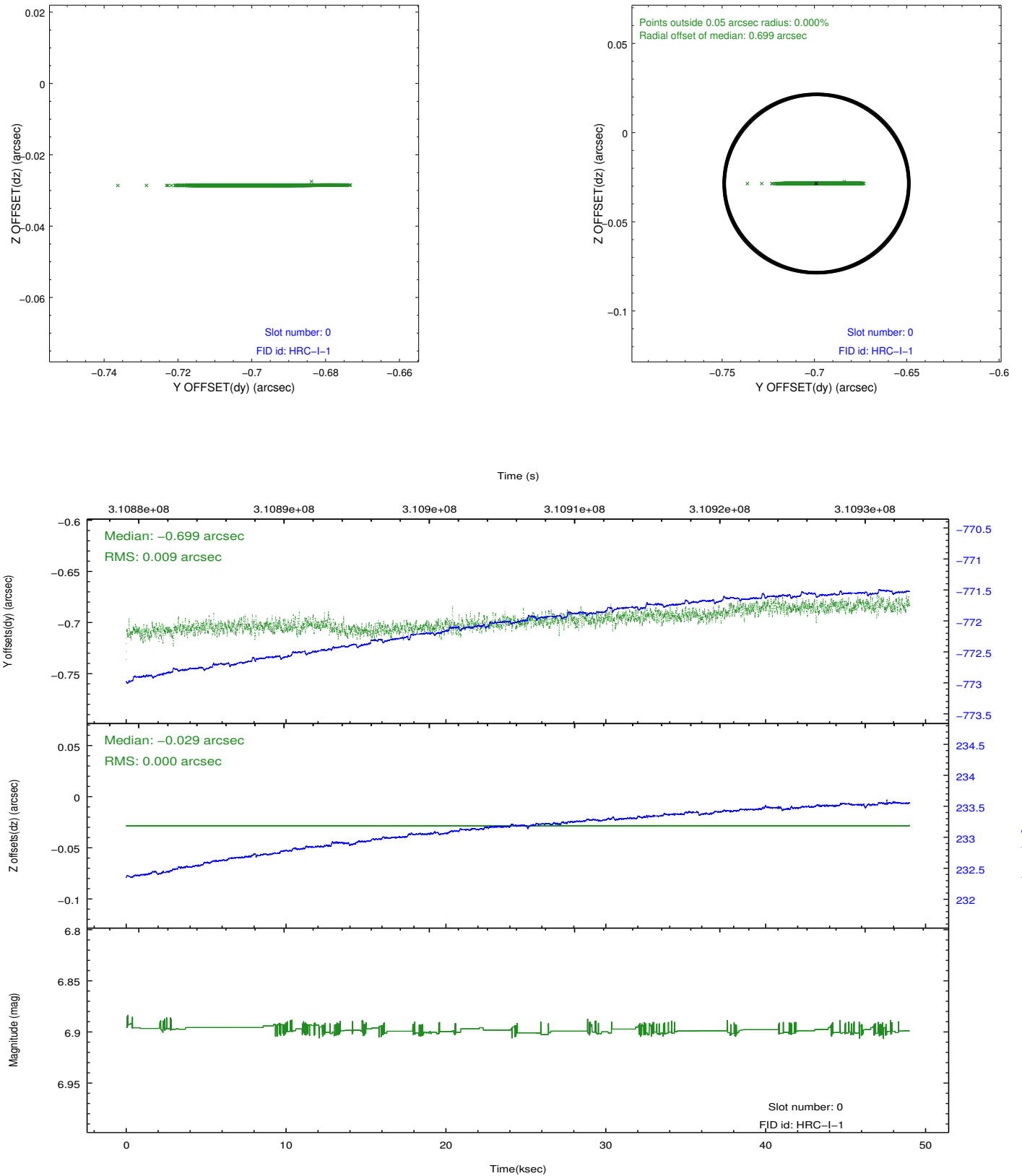


2.4.5 Slot 7

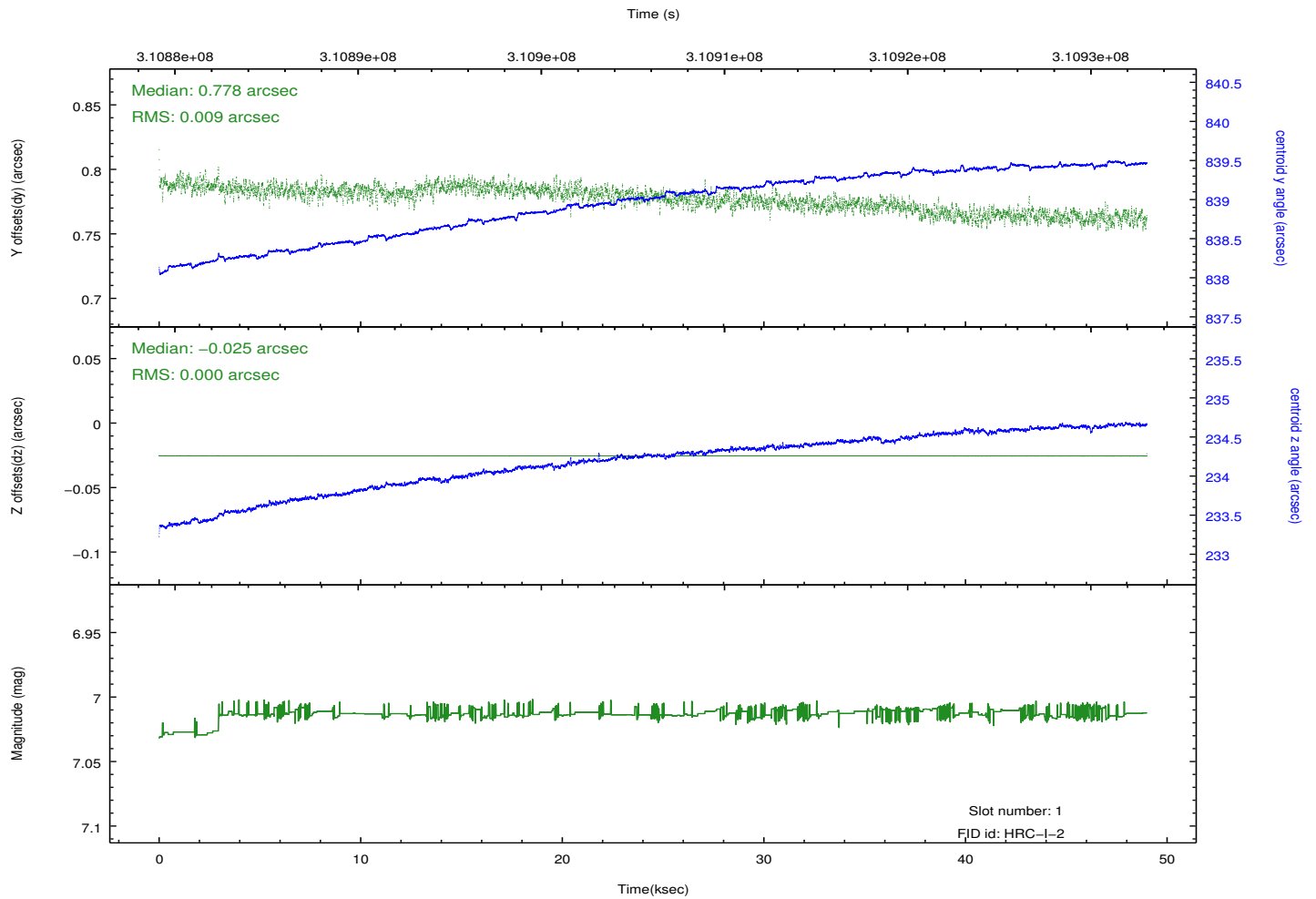
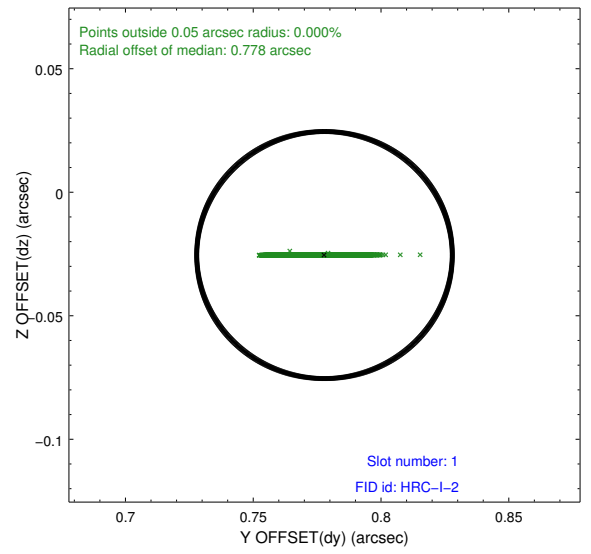
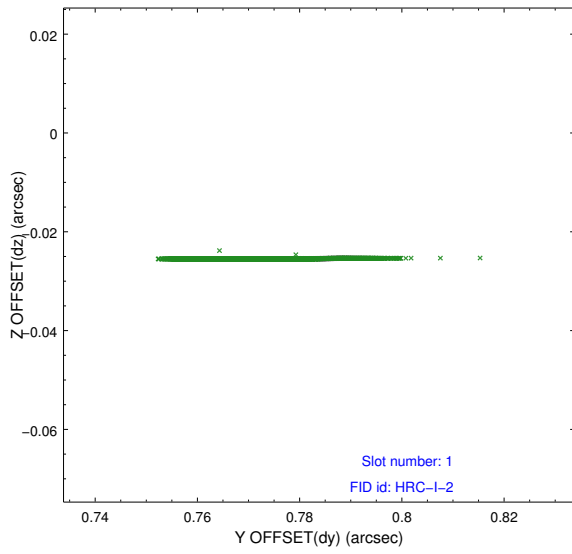


2.5 FID Slots

2.5.1 Slot 0



2.5.2 Slot 1



A Summary

A.1 Status

V&V Scientist	Jen Lauer
V&V Date (YYYY-MM-DD)	2012.08.16
V&V Edition	1
V&V Disposition and Status	OK
V&V Charge Time	48.7080023

A.2 Comments

Window constraint met. This is an ACIS-undercover observation paired with obs62815. After this obsid started in NEXT-IN-LINE mode, the obsid switched to obs62815 and the ACIS format. This observation was performed with a large SIM offset, per PI request. As a result, the fid light positions are offset beyond normally expected ranges, but the fid light position correction has compensated for this offset.