

# V&V Reference Report

## L2 ASCDS Version : 8.4.3.1

Observation 8447 - L2 Version 2  
Chandra X-Ray Center

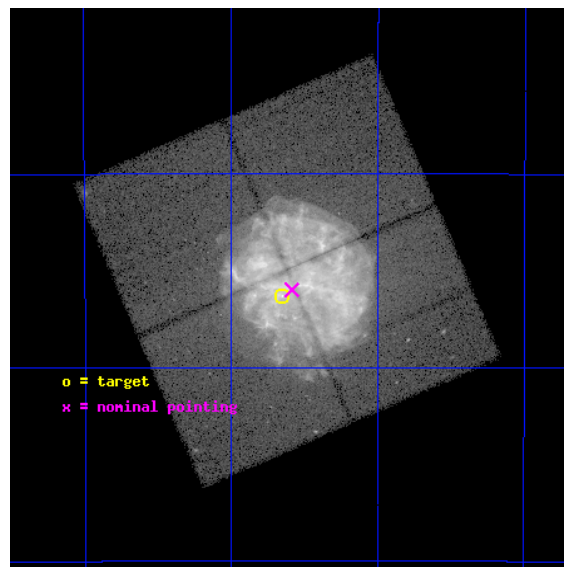
L2 Processing Date : Apr 11 2012

## Contents

<b>1</b>	<b>Front</b>	<b>2</b>
<b>2</b>	<b>OBI</b>	<b>3</b>
2.1	OBI . . . . .	3
2.1.1	Images . . . . .	3
2.1.2	Bias . . . . .	3
2.1.3	Parameters . . . . .	4
2.1.4	Events . . . . .	4
2.2	Compared Parameters . . . . .	5
2.3	Aspect . . . . .	6
2.4	Star Slots . . . . .	9
2.4.1	Slot 3 . . . . .	9
2.4.2	Slot 4 . . . . .	10
2.4.3	Slot 5 . . . . .	11
2.4.4	Slot 6 . . . . .	12
2.4.5	Slot 7 . . . . .	13
2.5	FID Slots . . . . .	14
2.5.1	Slot 0 . . . . .	14
2.5.2	Slot 1 . . . . .	15
2.5.3	Slot 2 . . . . .	16
<b>A</b>	<b>Summary</b>	<b>17</b>
A.1	Status . . . . .	17
A.2	Comments . . . . .	17

# 1 Front

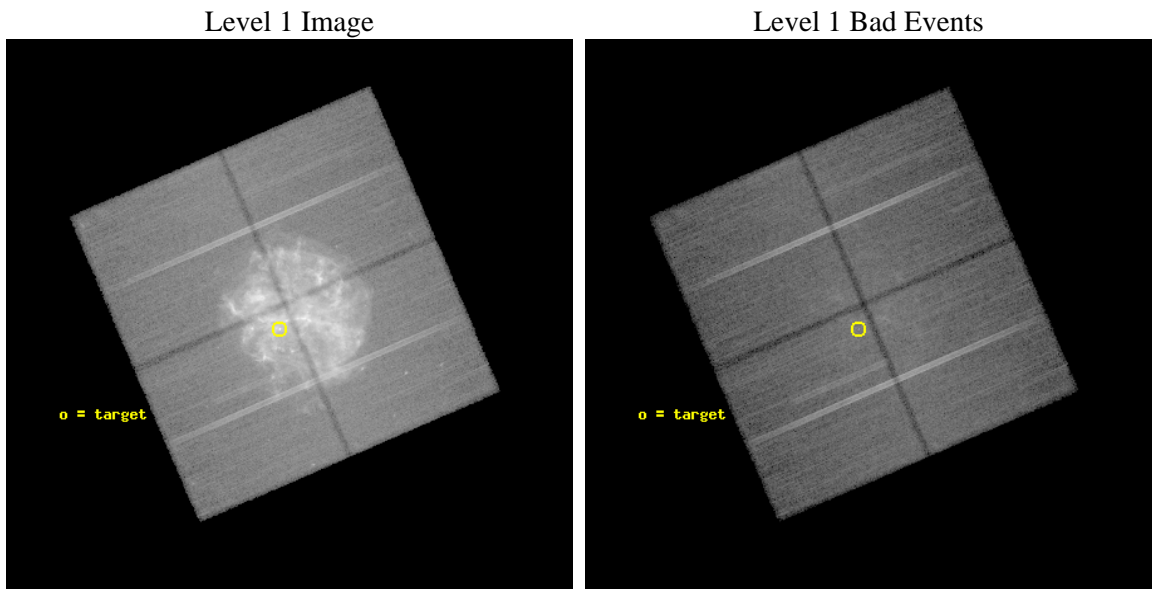
seq_num	500631	Sequence number
obs_id	8447	Observation id
title	O-Rich SNR G292.0+1.8: A Textbook Example of a Galactic Core-Collapse SNR	Proposal title
observer	DR. Sangwook Park	Principal investigator
object	G292.0+1.8	Source name
dtcycle	0	&#160
cycle	P	events from which exps? Prim/Second/Both
ra_targ	171.162917	Observer's specified target RA [deg]
dec_targ	-59.272222	Observer's specified target Dec [deg]
ra_nom	171.14676256259	Nominal RA [deg]
dec_nom	-59.266677493561	Nominal Dec [deg]
roll_nom	156.69479799298	Nominal Roll [deg]
revision	2	Processing version of data
ontime	48331.936610162	Sum of GTIs [s]
livetime	47700.444276896	Livetime [s]
ontime0	48338.218401253	Sum of GTIs [s]
ontime1	48341.359401464	Sum of GTIs [s]
ontime2	48335.077699959	Sum of GTIs [s]
ontime3	48331.936610162	Sum of GTIs [s]
l2events	1636920	Number of level 2 events



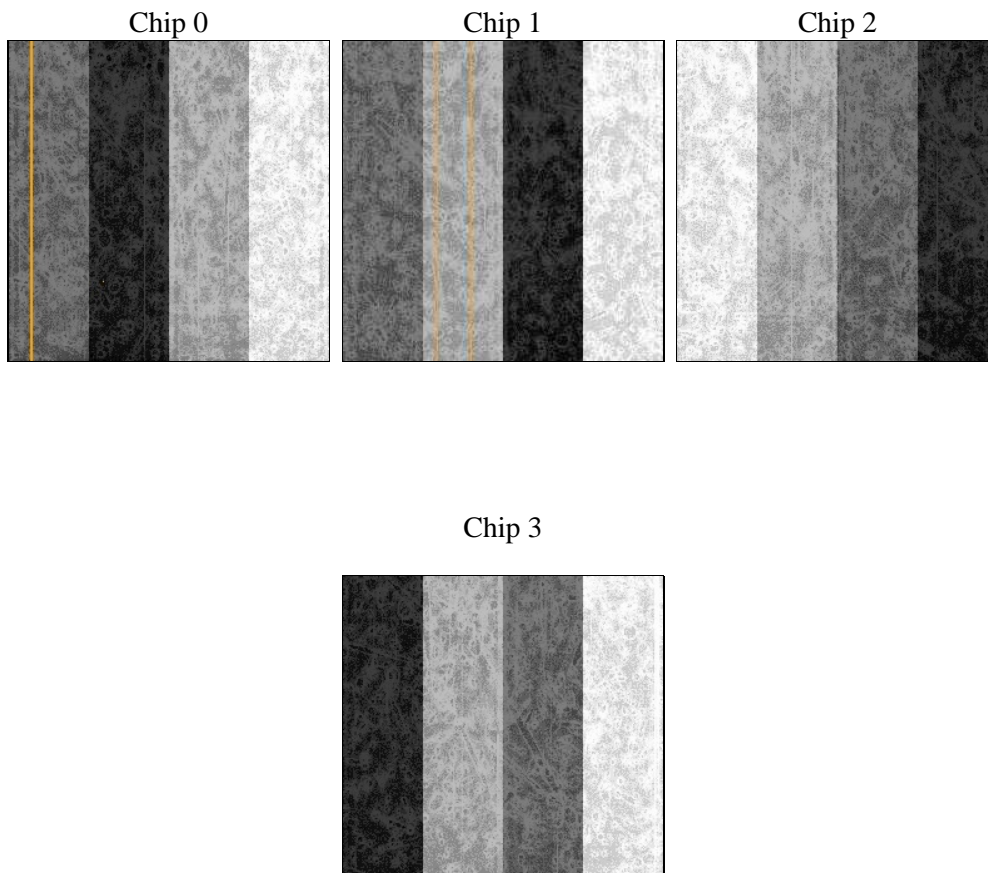
## 2 OBI

### 2.1 OBI

#### 2.1.1 Images



#### 2.1.2 Bias



### 2.1.3 Parameters

obi_num	0	Obi number	sched_exp_time	48554.749000	[s] Scheduled observation exposure time
ascdsver	8.4.3.1	Processing system revision	ontime	48331.936610162	Sum of GTIs [s]
caldbver	4.4.9	&#160	ontime0	48338.218401253	Sum of GTIs [s]
date	2012-04-11T02:10:26	Date and time of file creation	ontime1	48341.359401464	Sum of GTIs [s]
revision	2	Processing version of data	ontime2	48335.077699959	Sum of GTIs [s]
			ontime3	48331.936610162	Sum of GTIs [s]
			l1events	3309736	Number of level 1 events

### 2.1.4 Events

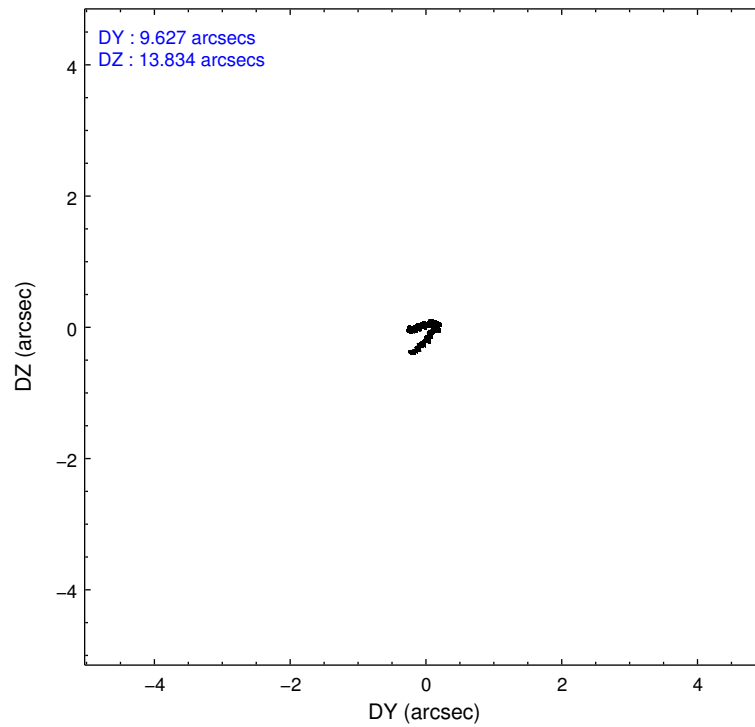
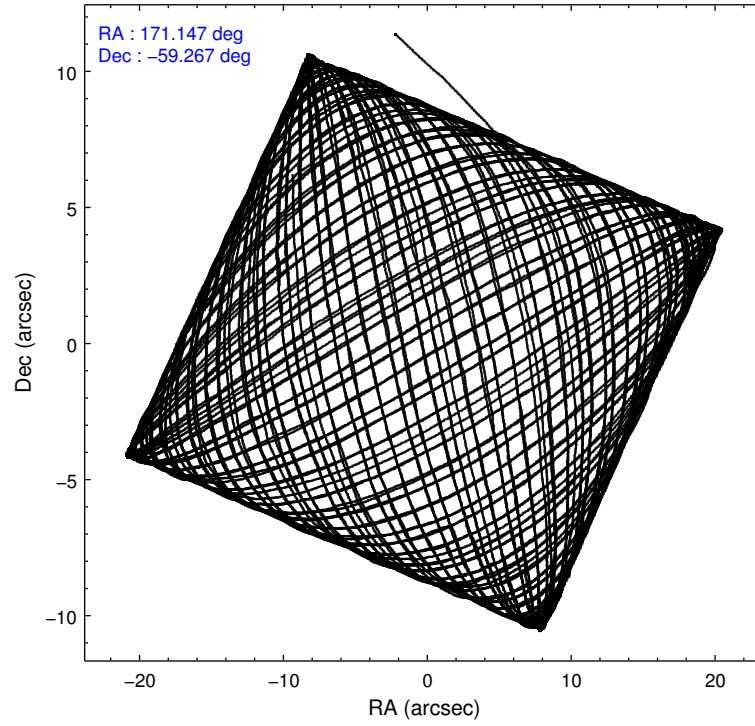
	ccd 0	ccd 1	ccd 2	ccd 3
level 1 events	674201	679748	1132079	823708
rejected events	363307	367781	410818	403447
rejected %	53%	54%	36%	48%

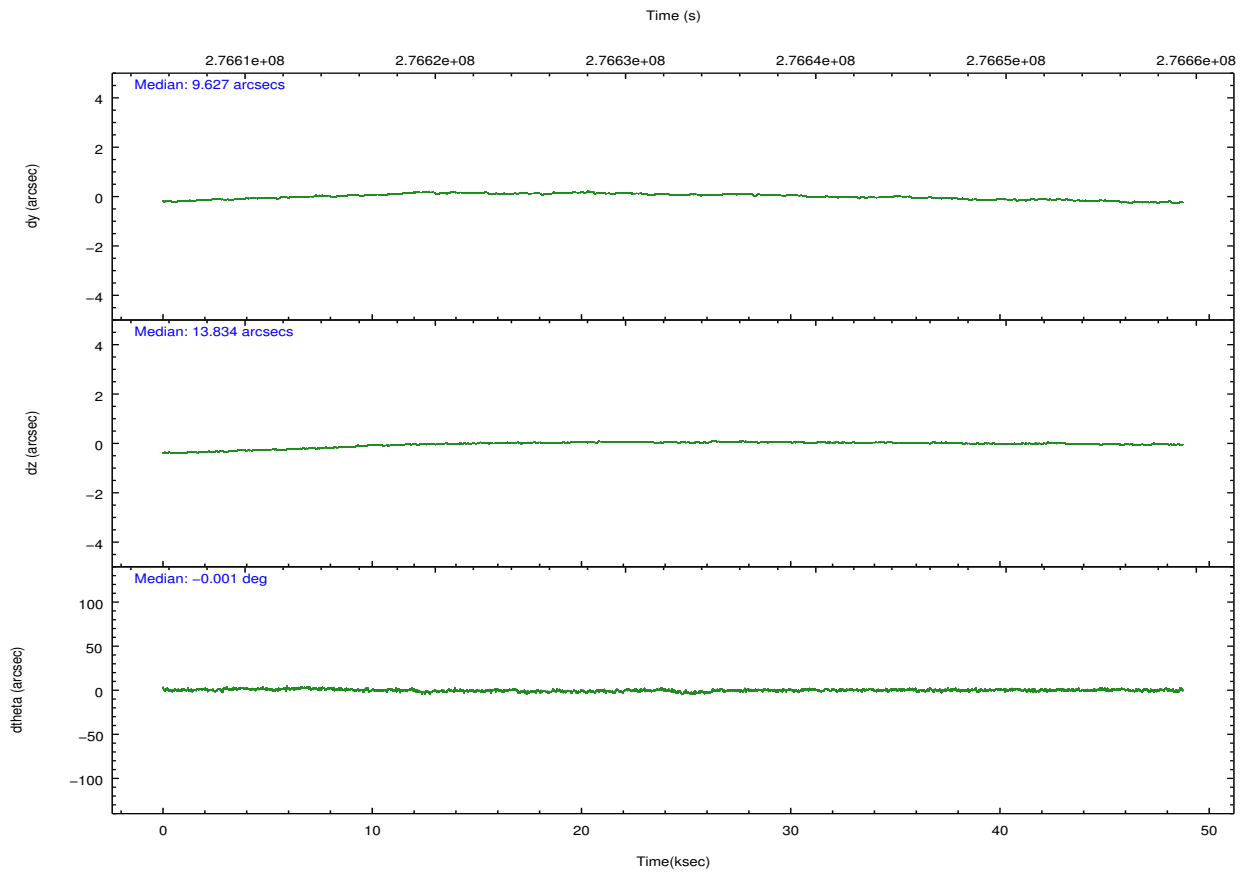
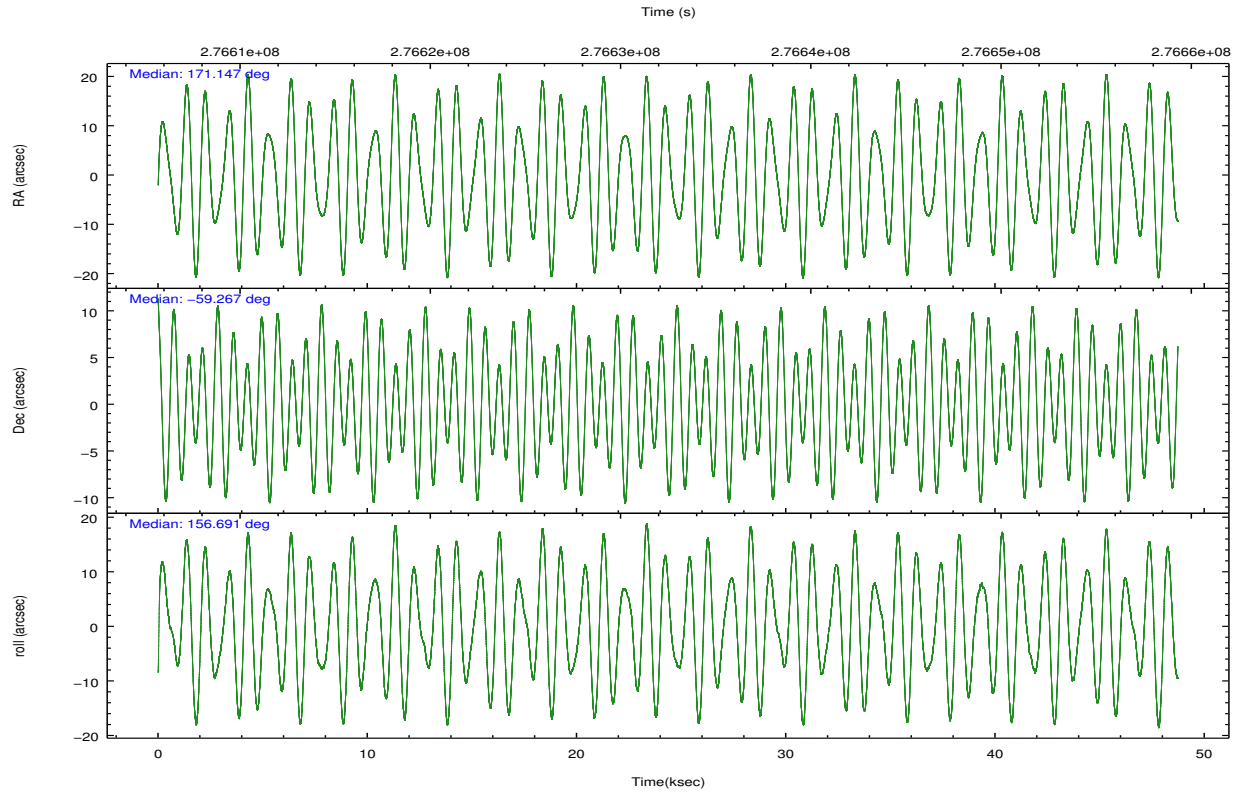
	ccd 0	ccd 1	ccd 2	ccd 3
grade 0 events	245813	245193	608611	344673
	36%	36%	53%	41%
grade 1 events	1575	1463	4327	2630
	0%	0%	0%	0%
grade 2 events	32645	32898	61836	38001
	4%	4%	5%	4%
grade 3 events	10529	10583	18146	12394
	1%	1%	1%	1%
grade 4 events	10304	10170	18203	12316
	1%	1%	1%	1%
grade 5 events	18437	20205	19454	21576
	2%	2%	1%	2%
grade 6 events	11620	13136	14519	12904
	1%	1%	1%	1%
grade 7 events	343278	346100	386983	379214
	50%	50%	34%	46%

## 2.2 Compared Parameters

Parameter	Planned	Actual	Parameter	Planned	Actual
Instrument	ACIS	ACIS	Obspar format version number	7	7
Detector	ACIS-0123	ACIS-0123	Obspar file type	PREDICTED	ACTUAL
Grating	NONE	NONE	Obspar update status	NONE	UPDATED
Data mode	VFAINT	VFAINT	Number of optional ACIS chips dropped	0	0
Observation mode	POINTING	POINTING	On-chip summing requested	N	N
[deg] Pointing RA	171.199957	171.1467625625943	Subarray requested	NONE	NONE
[deg] Pointing Dec	-59.263379	-59.26667749356144	Alternating exposures requested	N	N
[deg] Pointing Roll	156.531834	156.6947979929756	[s] Primary exposure time	0.000000	3.1
[mm] SIM focus pos	-0.782348	-0.7809083437167272			
[mm] SIM defocus	0	0.001439871863259334			
[mm] SIM translation stage pos	-232.622463	-232.6269660156328			
[mm] SIM translation stage offset	-0.97	-0.965486987296913			
[s] Observation start time (MET)	276608318.184000	276607309.59351			
Observation start date	2006-10-07T11:37:33	2006-10-07T11:21:49			
[s] Observation end time (MET)	276656873.184000	276657101.53336			
Observation end date	2006-10-08T01:06:48	2006-10-08T01:11:41			
Read mode	TIMED	TIMED			

## 2.3 Aspect



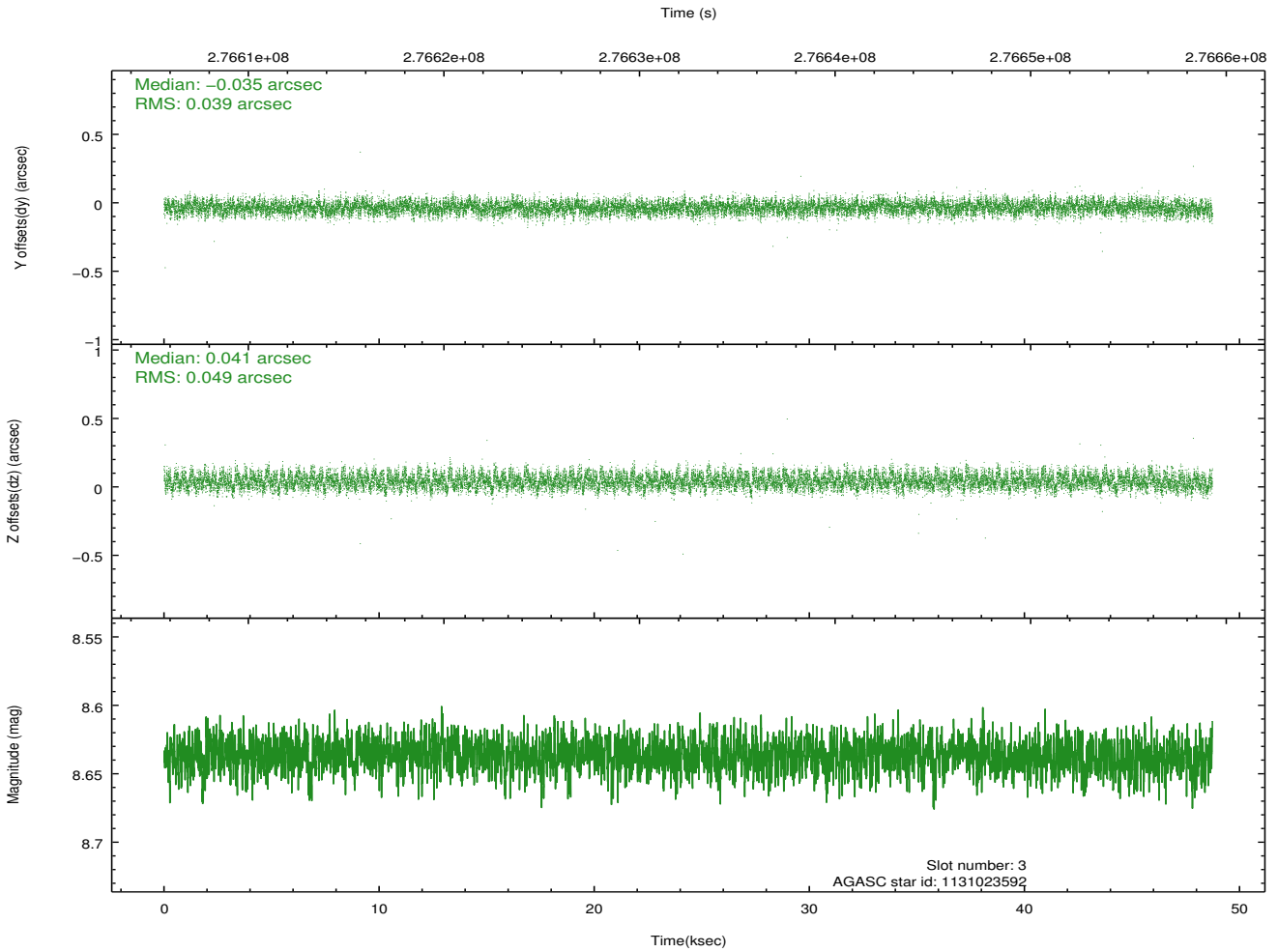
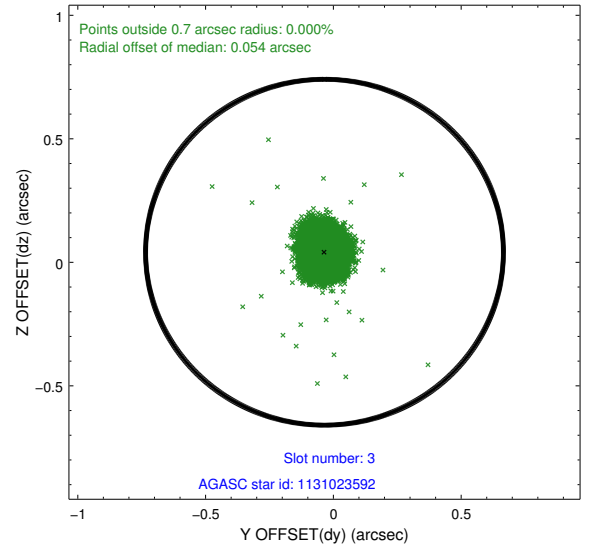
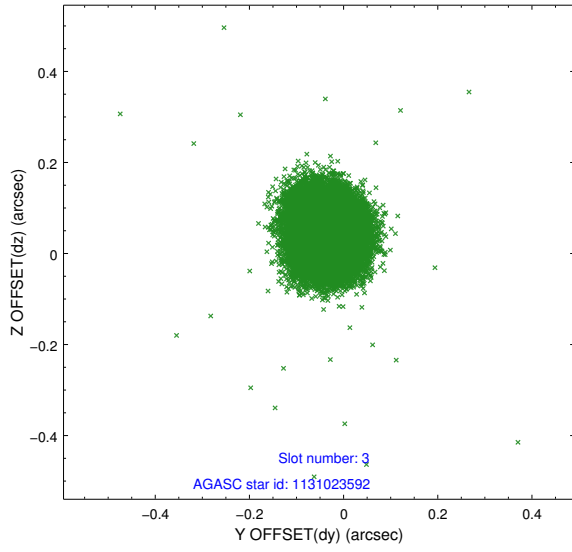


### Slot Statistics

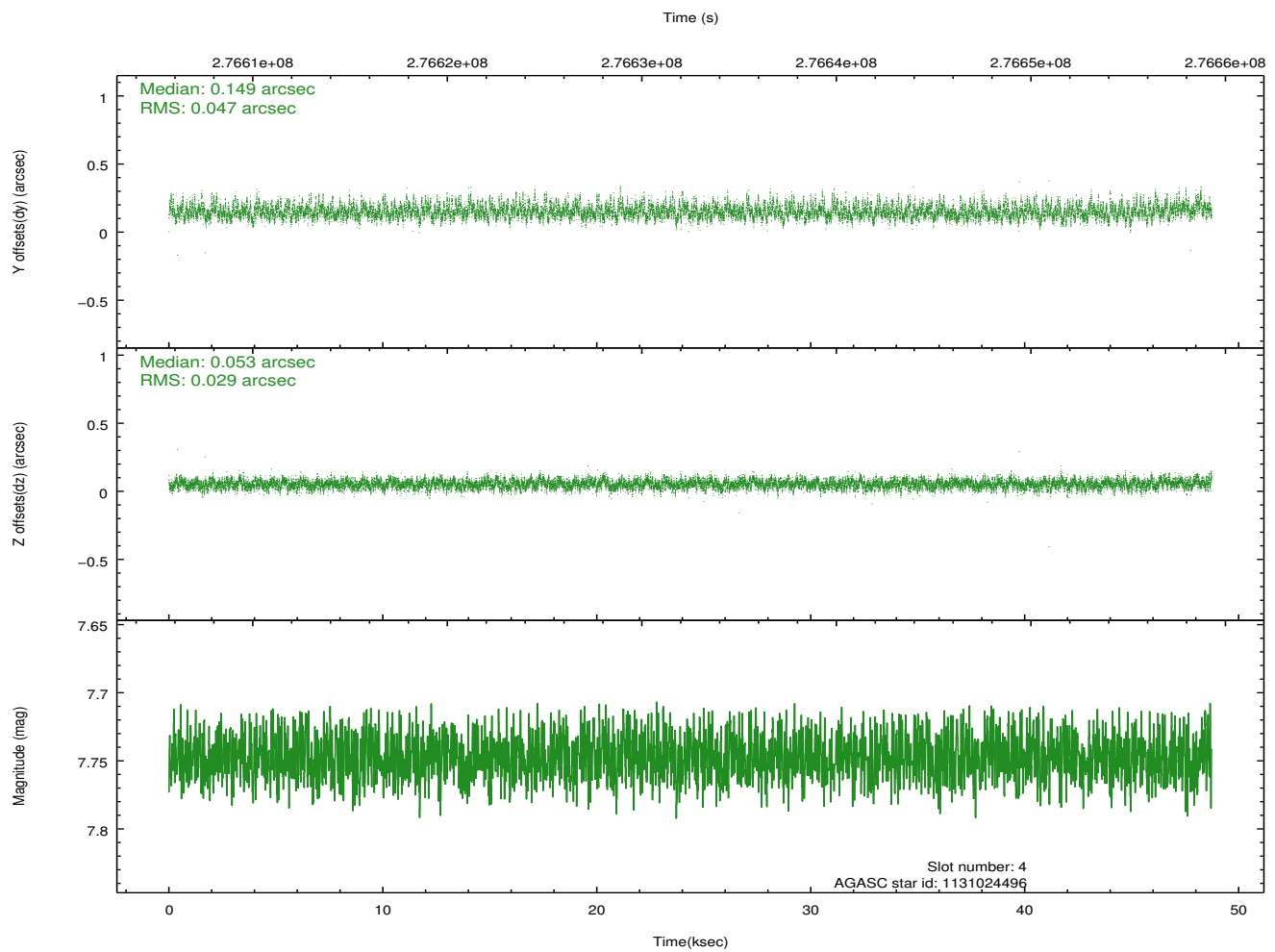
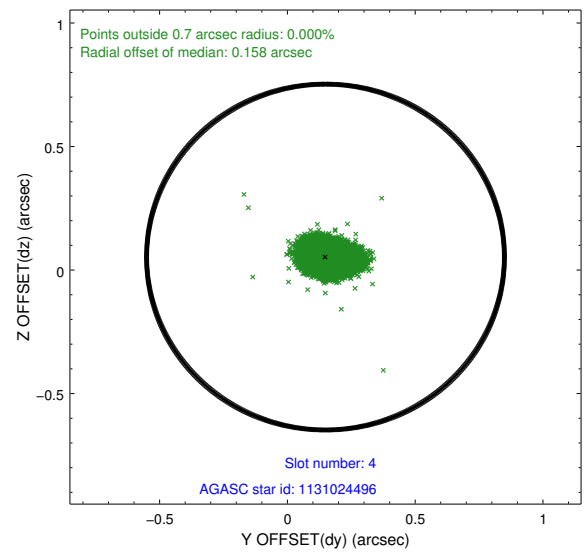
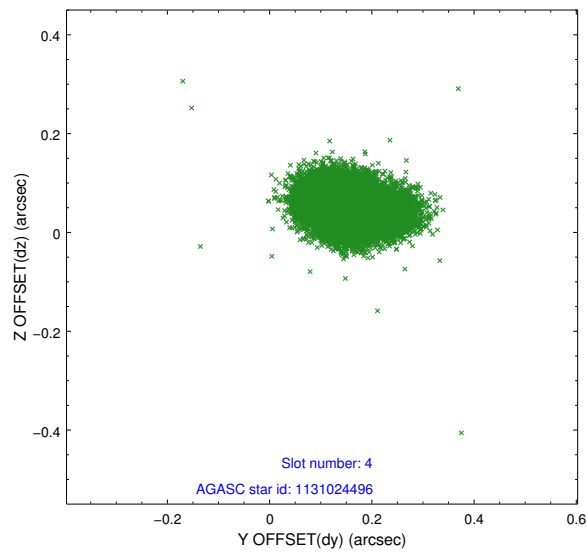
slot	status	id	mag	n_pts	med_dy	med_dz	dr1	dr2	ra	dec	mean_y	mean_z
0	FID	ACIS-I-2	7.14	11886	-0.132	-0.039	0.014	0.027	0.000000	0.000000	-764.41	-863.35
1	FID	ACIS-I-4	7.21	11886	0.067	0.089	0.011	0.021	0.000000	0.000000	2149.90	1042.88
2	FID	ACIS-I-6	7.25	11886	-0.035	0.013	0.016	0.028	0.000000	0.000000	395.86	1684.89
3	GUIDE	1131023592	8.64	23764	-0.035	0.041	0.066	0.104	172.510288	-59.004302	-1865.94	-1800.86
4	GUIDE	1131024496	7.75	23772	0.149	0.053	0.058	0.099	170.002192	-59.188051	2126.25	649.40
5	GUIDE	1131026672	6.91	23774	-0.079	0.075	0.049	0.079	170.822180	-58.787471	1328.55	-1288.62
6	GUIDE	1131024656	8.92	23768	-0.039	0.050	0.081	0.131	172.592368	-59.171017	-2234.16	-1303.29
7	GUIDE	1174293608	8.85	23721	-0.004	-0.220	0.089	0.143	171.337887	-60.017603	-1309.10	2391.96

## 2.4 Star Slots

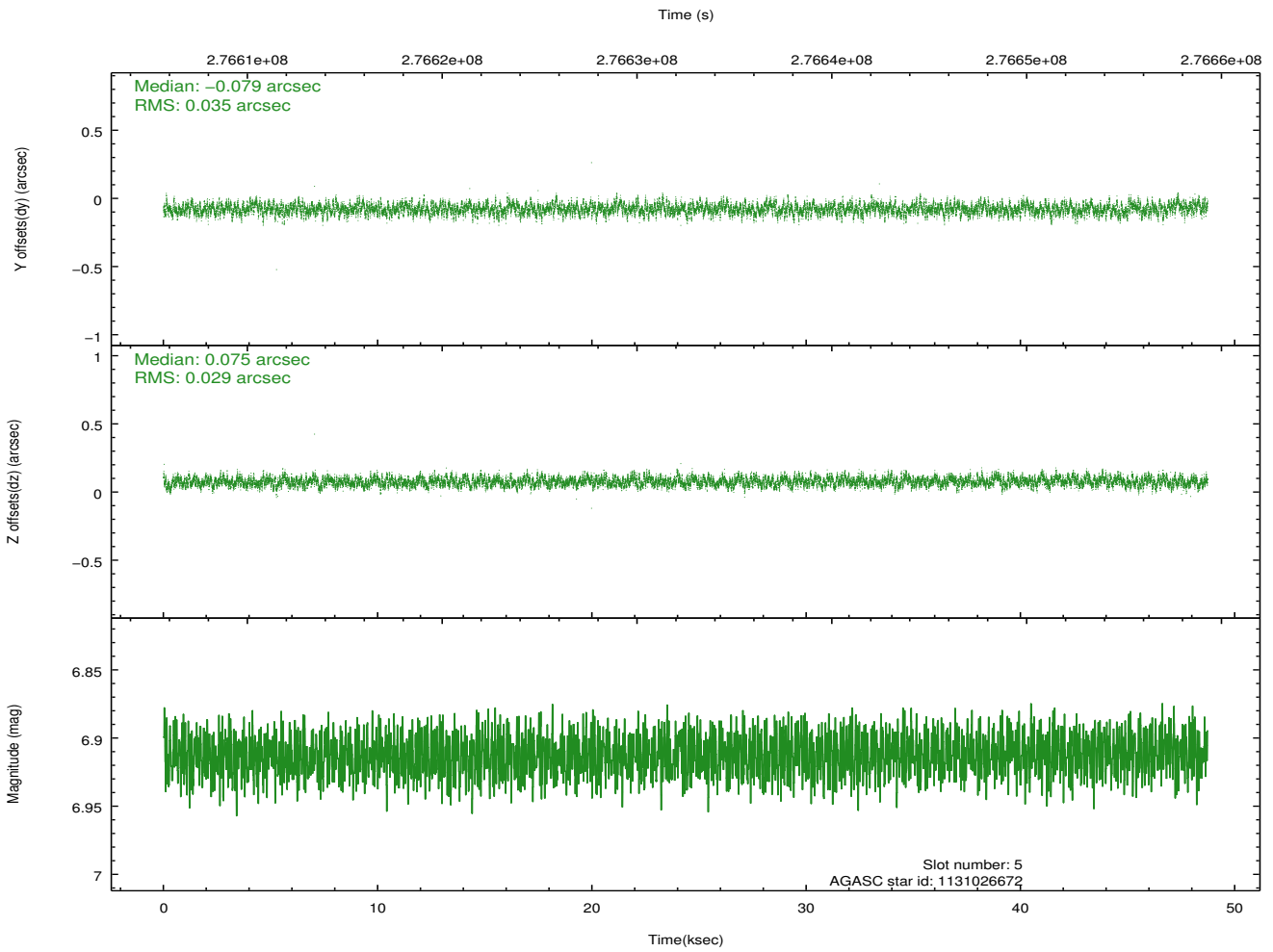
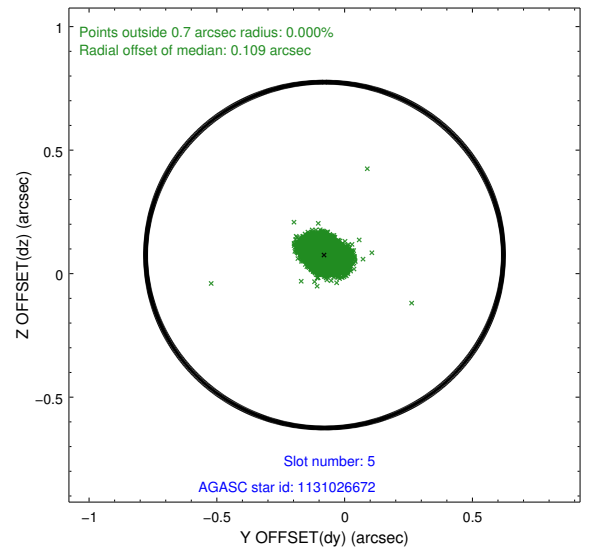
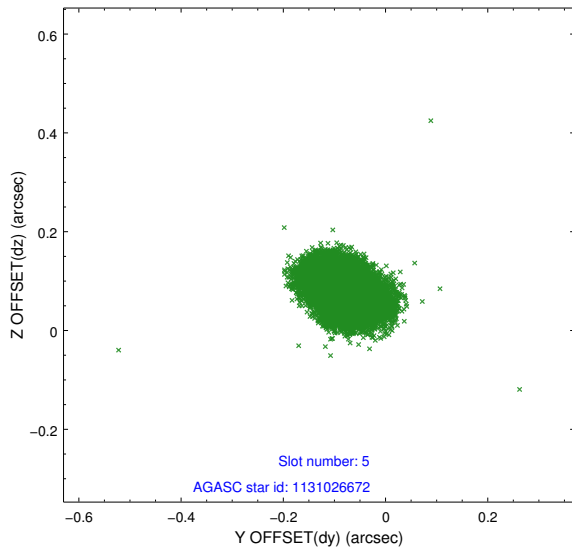
### 2.4.1 Slot 3



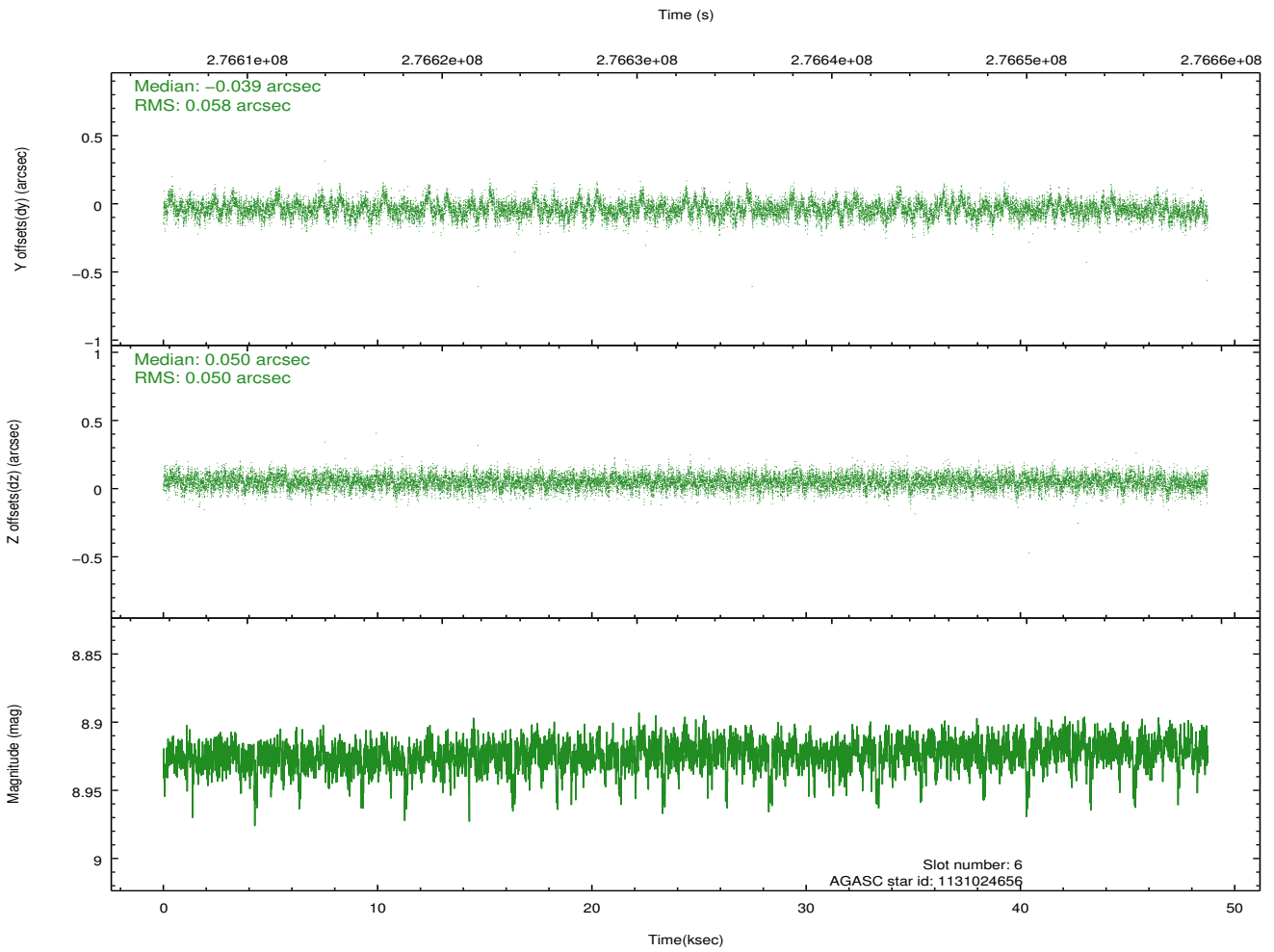
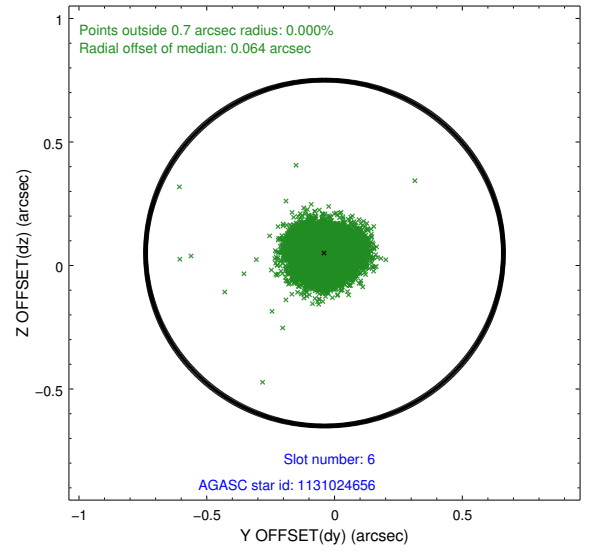
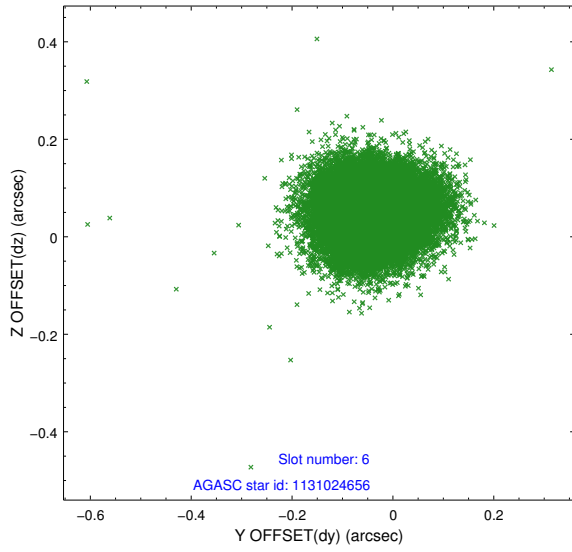
## 2.4.2 Slot 4



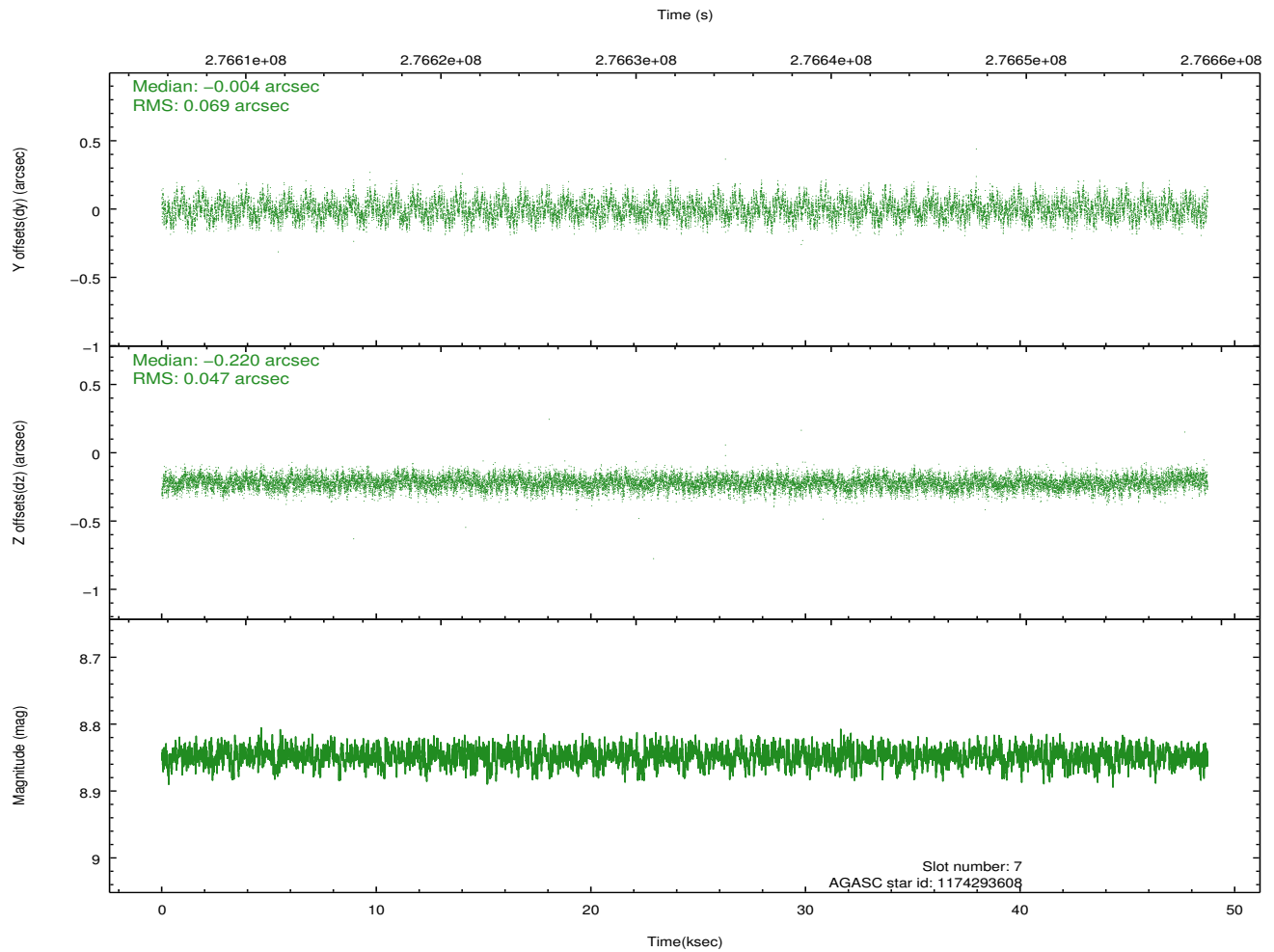
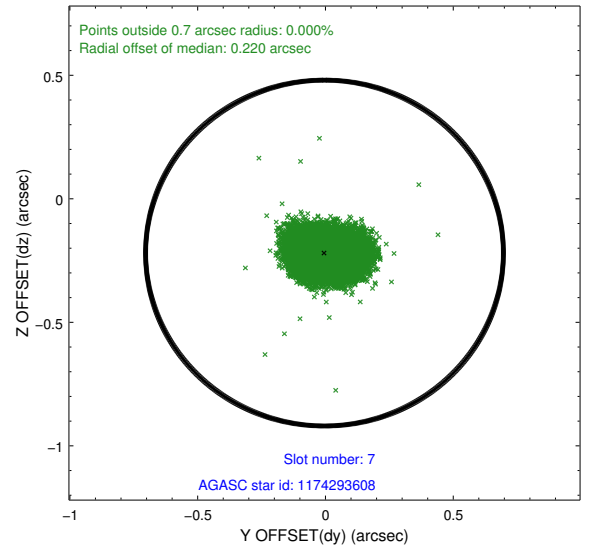
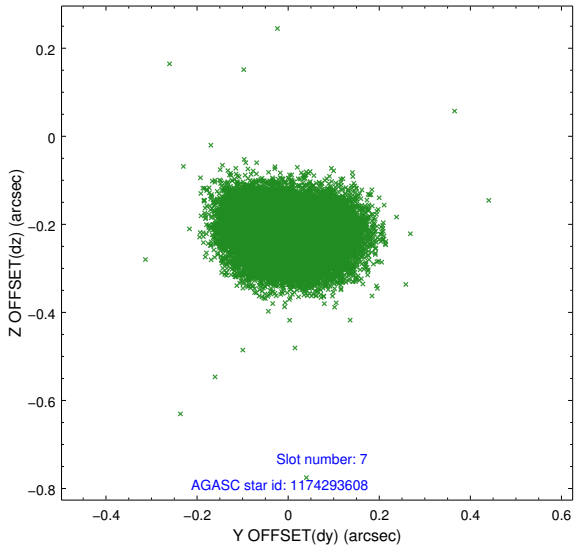
### 2.4.3 Slot 5



### 2.4.4 Slot 6

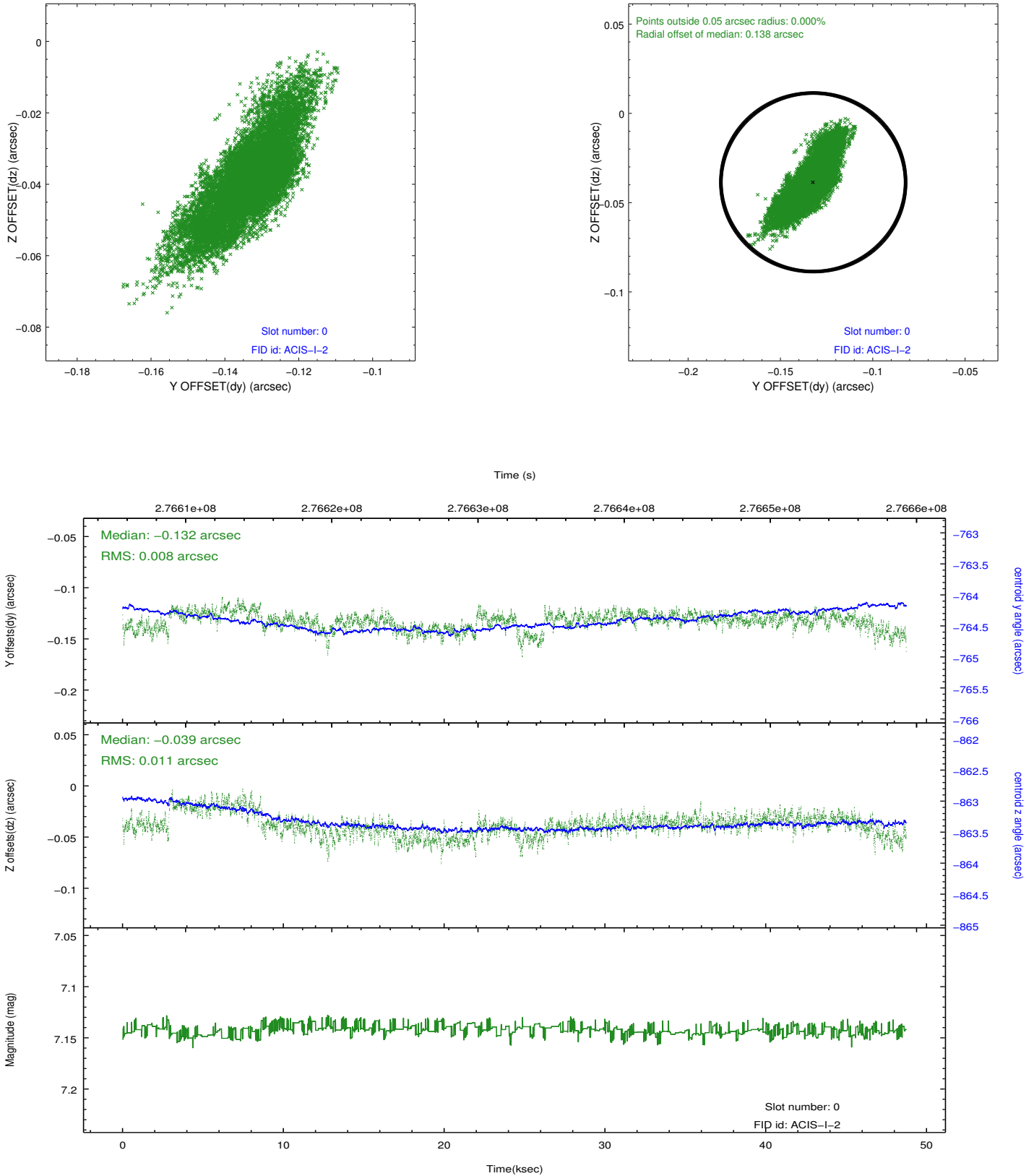


### 2.4.5 Slot 7

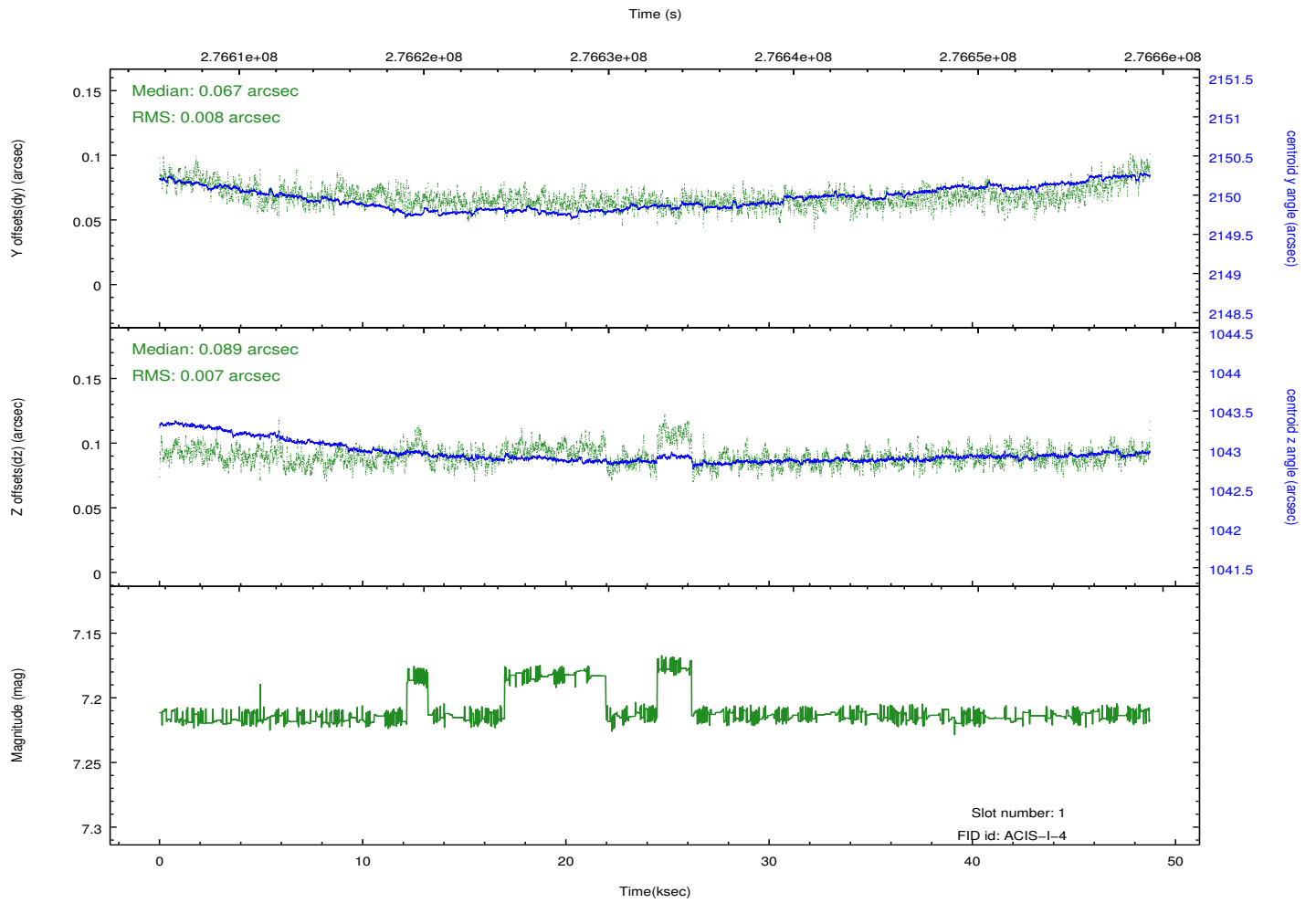
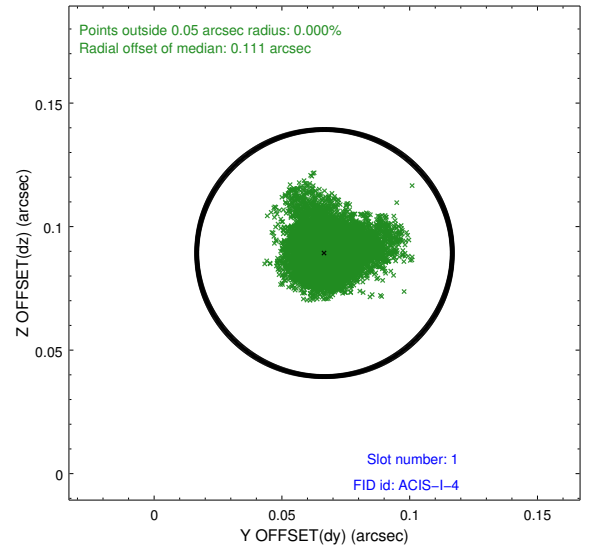
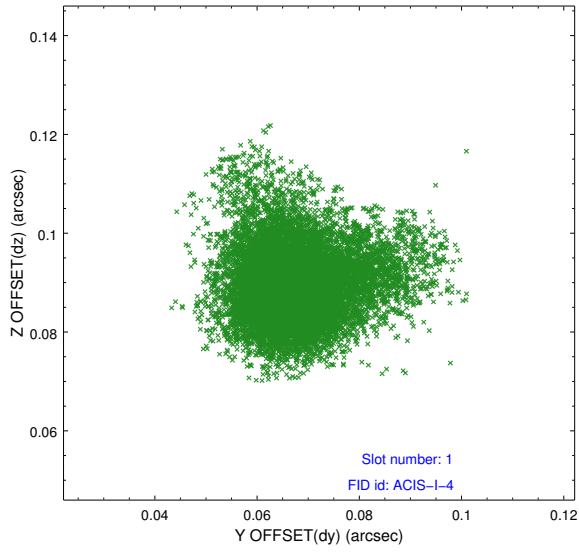


## 2.5 FID Slots

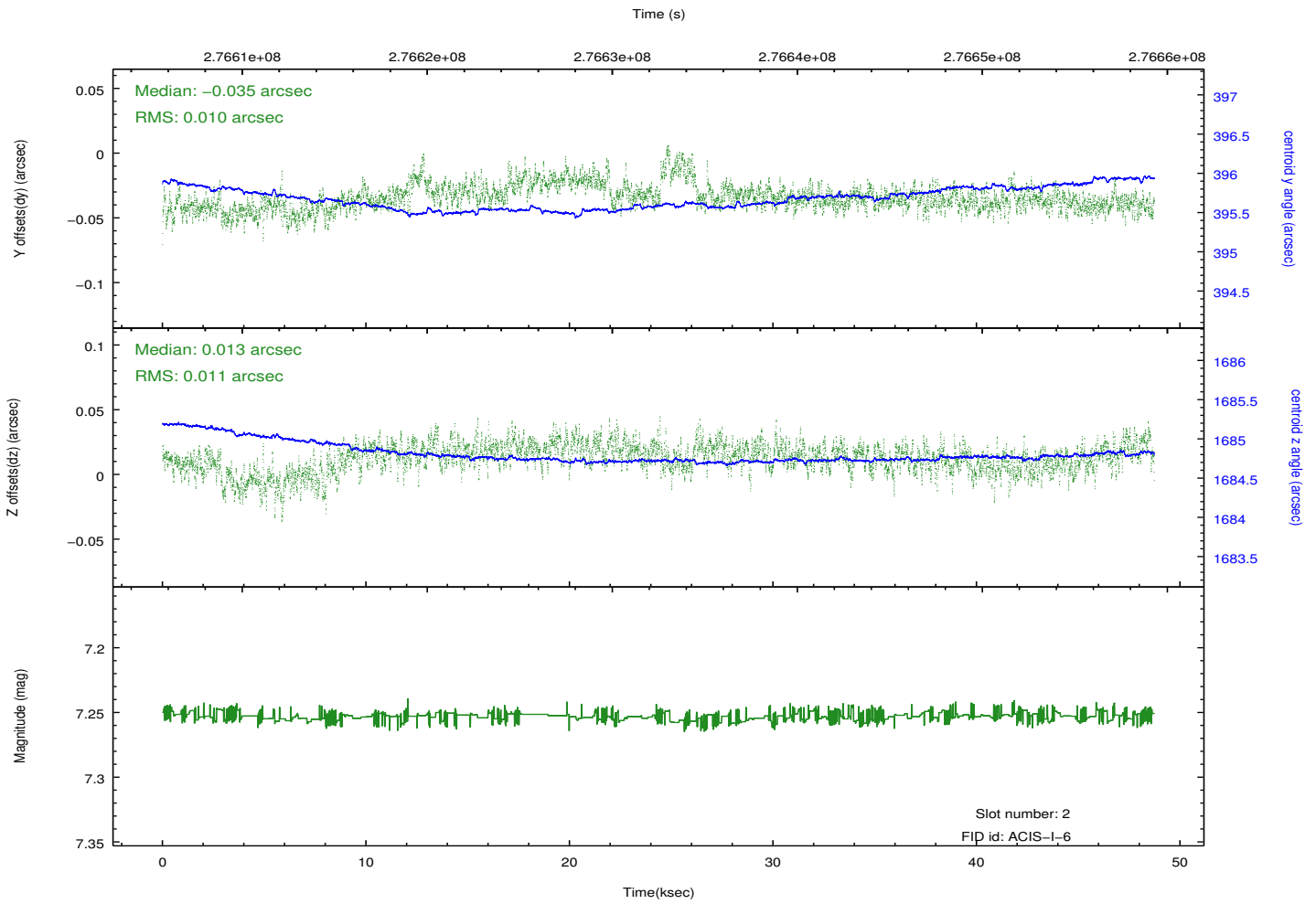
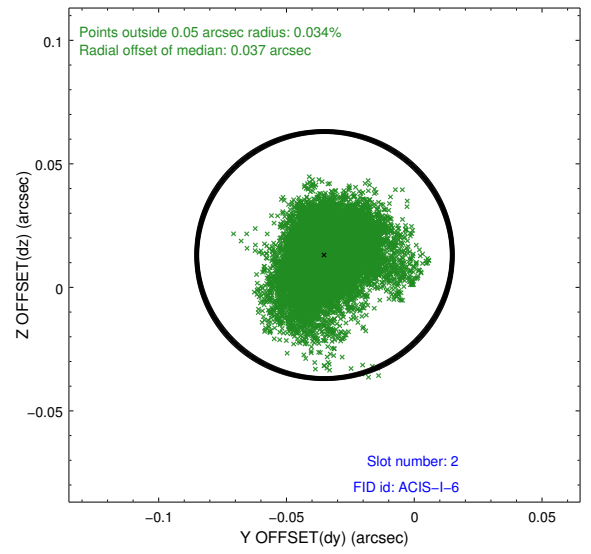
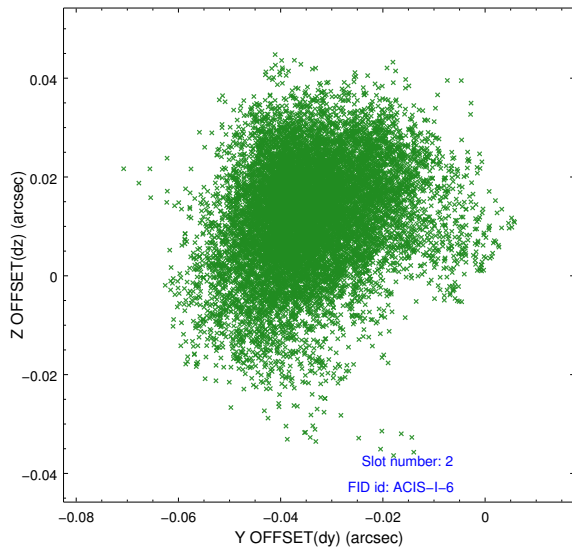
### 2.5.1 Slot 0



## 2.5.2 Slot 1



### 2.5.3 Slot 2



## **A Summary**

### **A.1 Status**

V&V Scientist	Jen Lauer
V&V Date (YYYY-MM-DD)	2012.04.11
V&V Edition	1
V&V Disposition and Status	OK
V&V Charge Time	48.3319366

### **A.2 Comments**