

V&V Reference Report

L2 ASCDS Version : 8.4.4

Observation 8467 - L2 Version 2
Chandra X-Ray Center

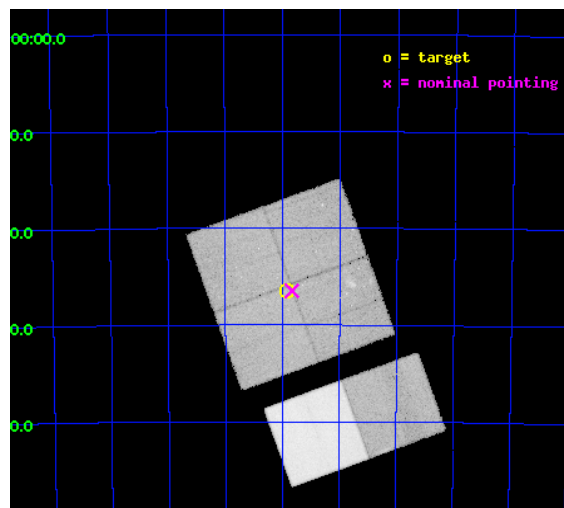
L2 Processing Date : Apr 27 2012

Contents

1	Front	2
2	OBI	3
2.1	OBI	3
2.1.1	Images	3
2.1.2	Bias	3
2.1.3	Parameters	4
2.1.4	Events	4
2.2	Compared Parameters	5
2.3	Aspect	6
2.4	Star Slots	9
2.4.1	Slot 3	9
2.4.2	Slot 4	10
2.4.3	Slot 5	11
2.4.4	Slot 6	12
2.4.5	Slot 7	13
2.5	FID Slots	14
2.5.1	Slot 0	14
2.5.2	Slot 1	15
2.5.3	Slot 2	16
A	Summary	17
A.1	Status	17
A.2	Comments	17

1 Front

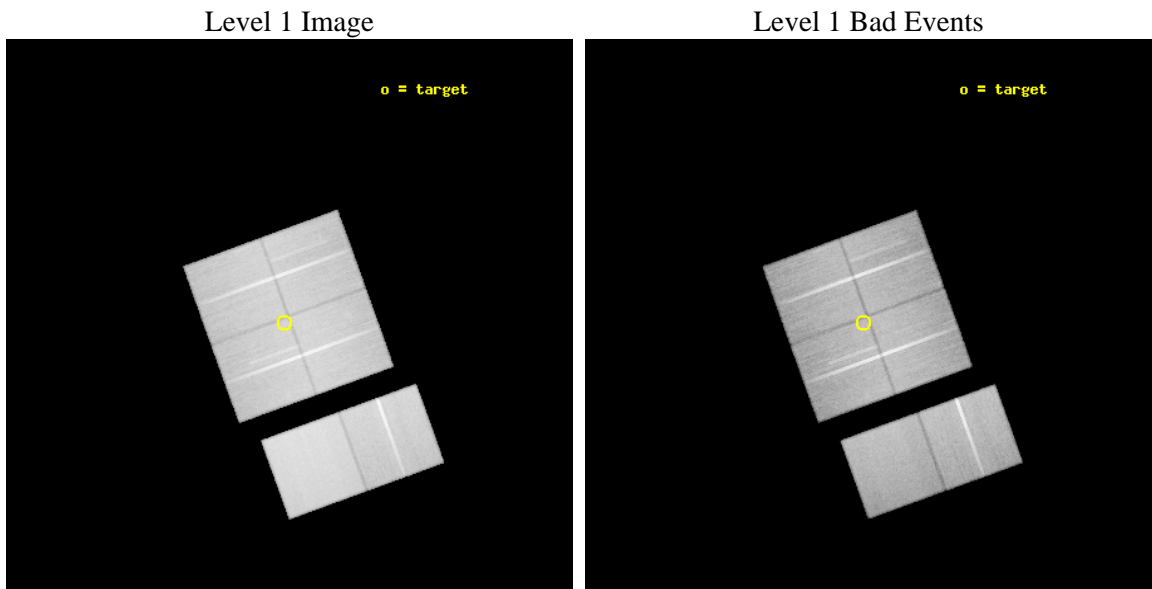
seq_num	600646	Sequence number
obs_id	8467	Observation id
title	Massive Star Formation and Energy Feedback in the Starburst Region N11	Proposal title
observer	Prof. You-Hua Chu	Principal investigator
object	LHA 120-N 11	Source name
dtcycle	0	
cycle	P	events from which exps? Prim/Second/Both
ra_targ	73.979167	Observer's specified target RA [deg]
dec_targ	-66.441667	Observer's specified target Dec [deg]
ra_nom	73.958986918537	Nominal RA [deg]
dec_nom	-66.441290617449	Nominal Dec [deg]
roll_nom	160.0898495129	Nominal Roll [deg]
revision	2	Processing version of data
ontime	49084.407263041	Sum of GTIs [s]
livetime	48462.870943194	Livetime [s]
ontime0	49077.802202344	Sum of GTIs [s]
ontime1	49084.325183034	Sum of GTIs [s]
ontime2	49074.643342078	Sum of GTIs [s]
ontime3	49084.407263041	Sum of GTIs [s]
ontime6	49081.248372734	Sum of GTIs [s]
ontime7	49084.448303044	Sum of GTIs [s]
l2events	523053	Number of level 2 events



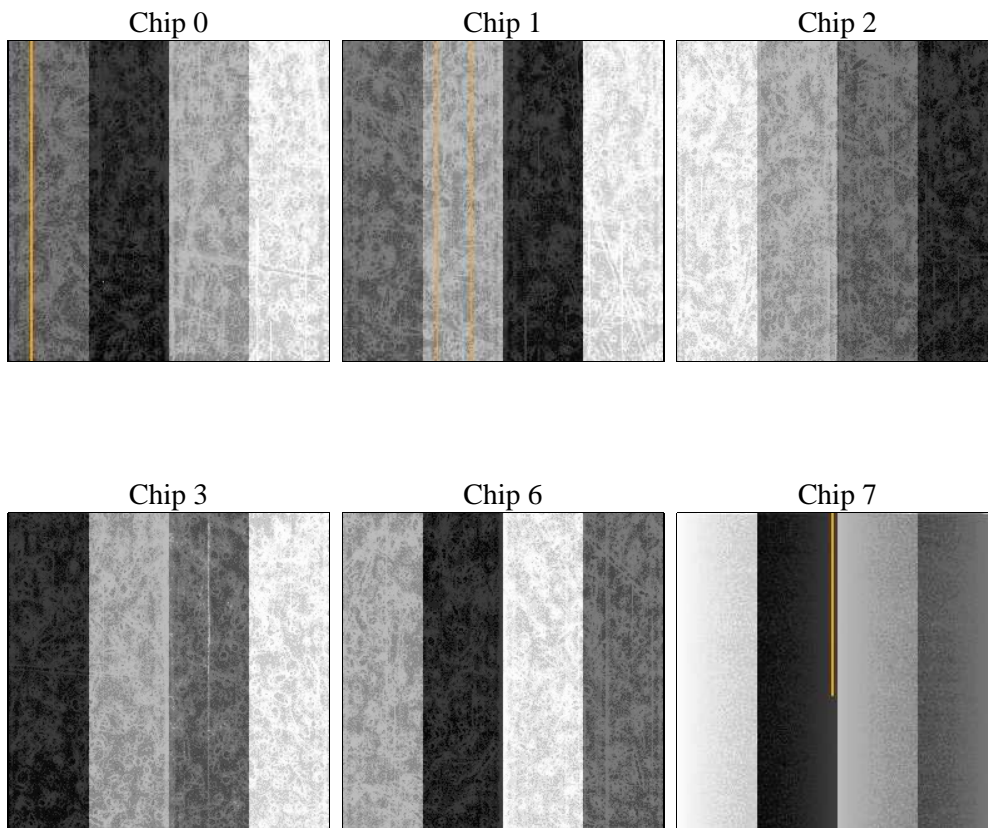
2 OBI

2.1 OBI

2.1.1 Images



2.1.2 Bias



2.1.3 Parameters

obi_num	0	Obi number	sched_exp_time	49000.000000	[s] Scheduled observation exposure time
ascdsver	8.4.4	Processing system revision	ontime	49084.407263041	Sum of GTIs [s]
caldbver	4.4.9	 	ontime0	49077.802202344	Sum of GTIs [s]
date	2012-04-27T03:50:35	Date and time of file creation	ontime1	49084.325183034	Sum of GTIs [s]
revision	2	Processing version of data	ontime2	49074.643342078	Sum of GTIs [s]
			ontime3	49084.407263041	Sum of GTIs [s]
			ontime6	49081.248372734	Sum of GTIs [s]
			ontime7	49084.448303044	Sum of GTIs [s]
			l1events	3002961	Number of level 1 events

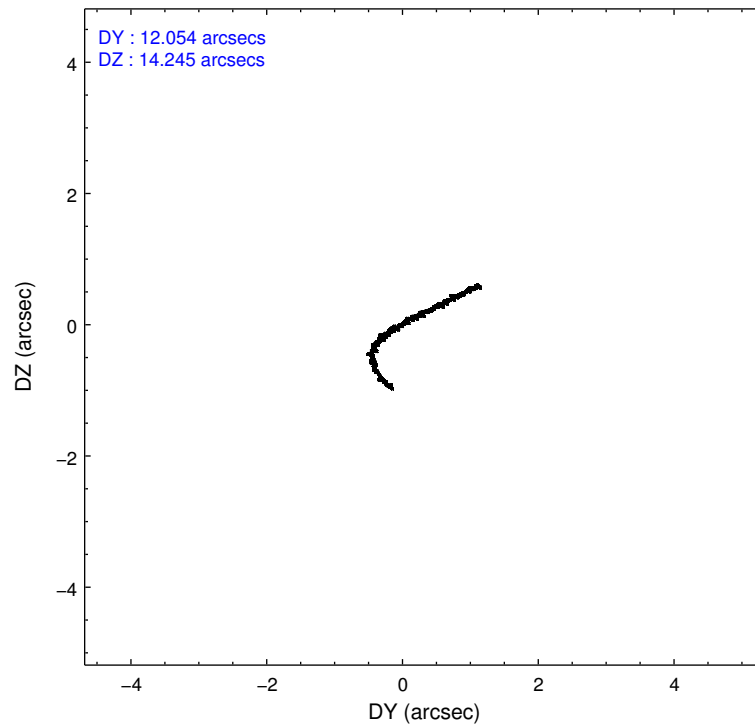
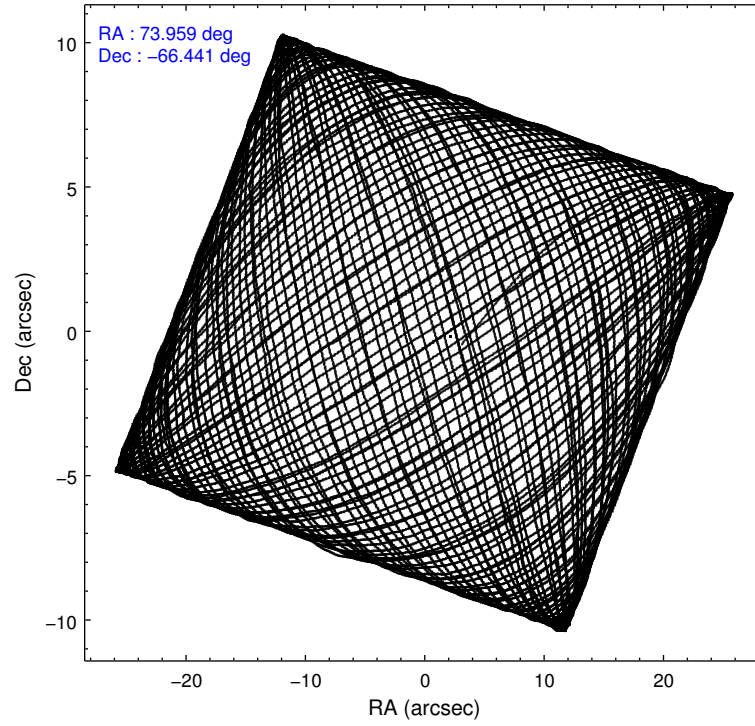
2.1.4 Events

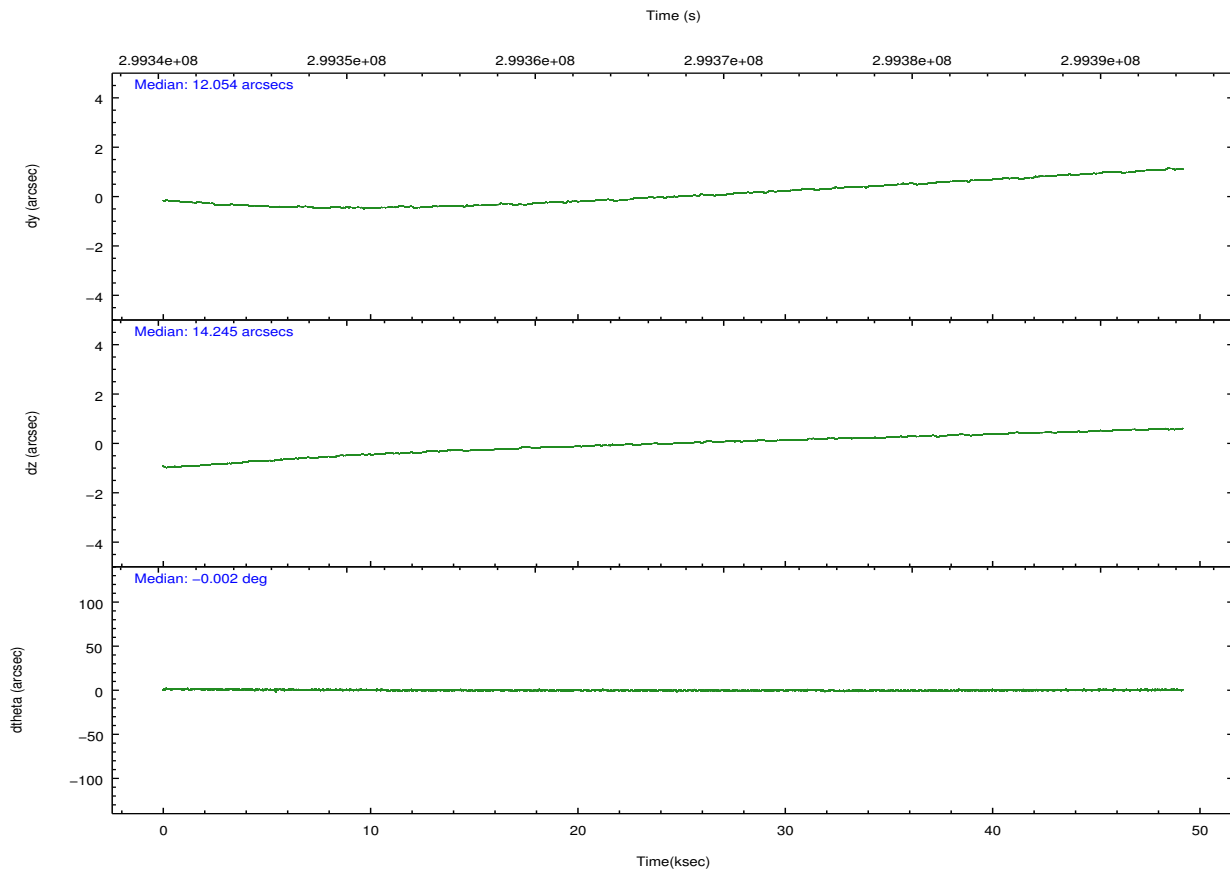
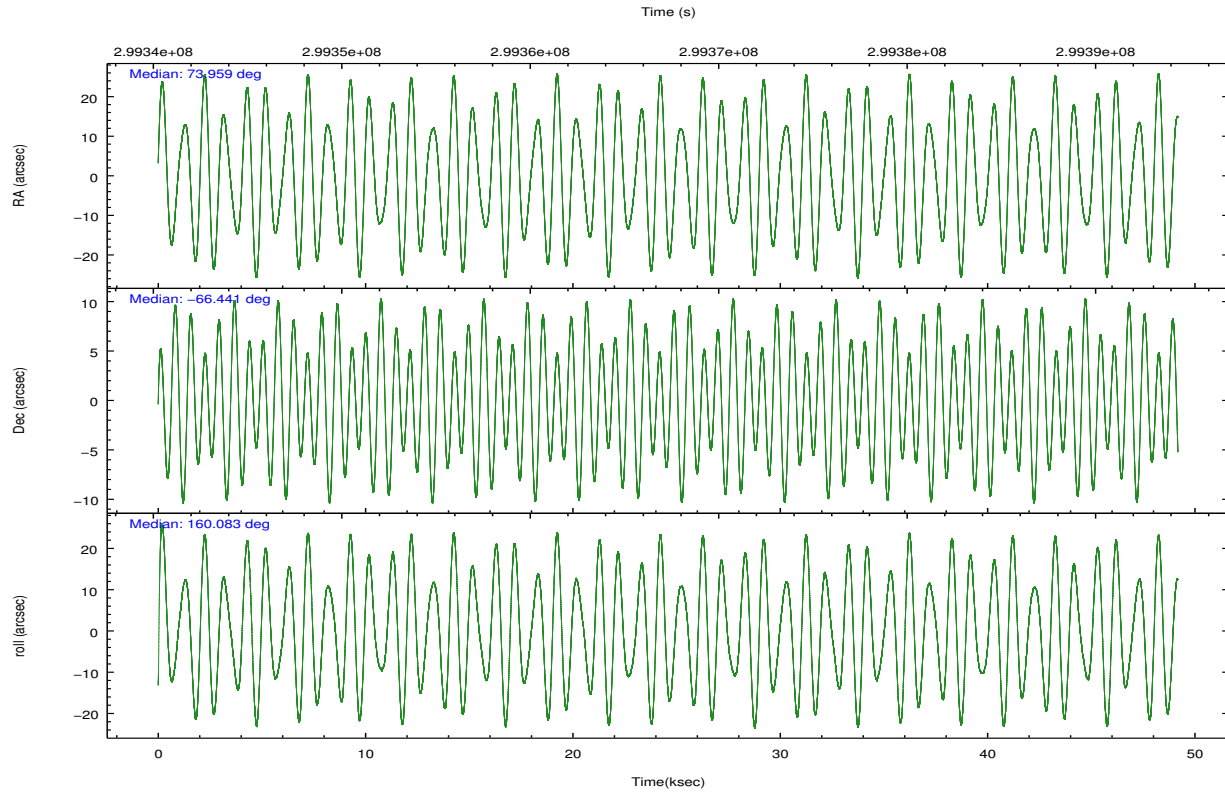
	ccd 0	ccd 1	ccd 2	ccd 3	ccd 6	ccd 7		ccd 0	ccd 1	ccd 2	ccd 3	ccd 6	ccd 7
level 1 events	448688	446650	489746	468828	497758	651291	grade 0 events	25547	24776	27310	27629	22175	23976
rejected events	389813	384267	431082	409035	440239	379614		5%	5%	5%	5%	4%	3%
rejected %	86%	86%	88%	87%	88%	58%	grade 1 events	319	268	351	304	300	598
								0%	0%	0%	0%	0%	0%
							grade 2 events	12749	14488	11996	11466	12976	55148
								2%	3%	2%	2%	2%	8%
							grade 3 events	5400	5692	5054	5308	5366	23136
								1%	1%	1%	1%	1%	3%
							grade 4 events	5132	5558	5117	5521	5288	22729
								1%	1%	1%	1%	1%	3%
							grade 5 events	18898	20535	18334	21669	22399	60645
								4%	4%	3%	4%	4%	9%
							grade 6 events	10049	11874	9196	9875	11718	146707
								2%	2%	1%	2%	2%	22%
							grade 7 events	370594	363459	412388	387056	417536	318352
								82%	81%	84%	82%	83%	48%

2.2 Compared Parameters

Parameter	Planned	Actual	Parameter	Planned	Actual
Instrument	ACIS	ACIS	Obspar format version number	7	7
Detector	ACIS-012367	ACIS-012367	Obspar file type	PREDICTED	ACTUAL
Grating	NONE	NONE	Obspar update status	NONE	UPDATED
Data mode	FAINT	FAINT	CCD I0 on	Y	Y
Observation mode	POINTING	POINTING	CCD I1 on	Y	Y
[deg] Pointing RA	74.026627	73.95898691853662	CCD I2 on	Y	Y
[deg] Pointing Dec	-66.436362	-66.441290617449	CCD I3 on	Y	Y
[deg] Pointing Roll	159.943170	160.0898495129006	CCD S0 on	N	N
[mm] SIM focus pos	-0.782348	-0.7809083437167272	CCD S1 on	N	N
[mm] SIM defocus	0	0.001439871863259334	CCD S2 on	O1	Y
[mm] SIM translation stage pos	-233.592463	-233.5874344608287	CCD S3 on	O2	Y
[mm] SIM translation stage offset	0	-0.005018542100998502	CCD S4 on	N	N
[s] Observation start time (MET)	299342898.184000	299341814.26078	CCD S5 on	N	N
Observation start date	2007-06-27T14:47:13	2007-06-27T14:30:14	Number of optional ACIS chips dropped	0	0
[s] Observation end time (MET)	299391898.184000	299392661.95072	On-chip summing requested	N	N
Observation end date	2007-06-28T04:23:53	2007-06-28T04:37:41	Subarray requested	NONE	NONE
Read mode	TIMED	TIMED	Alternating exposures requested	N	N
			[s] Primary exposure time	0.000000	3.2

2.3 Aspect



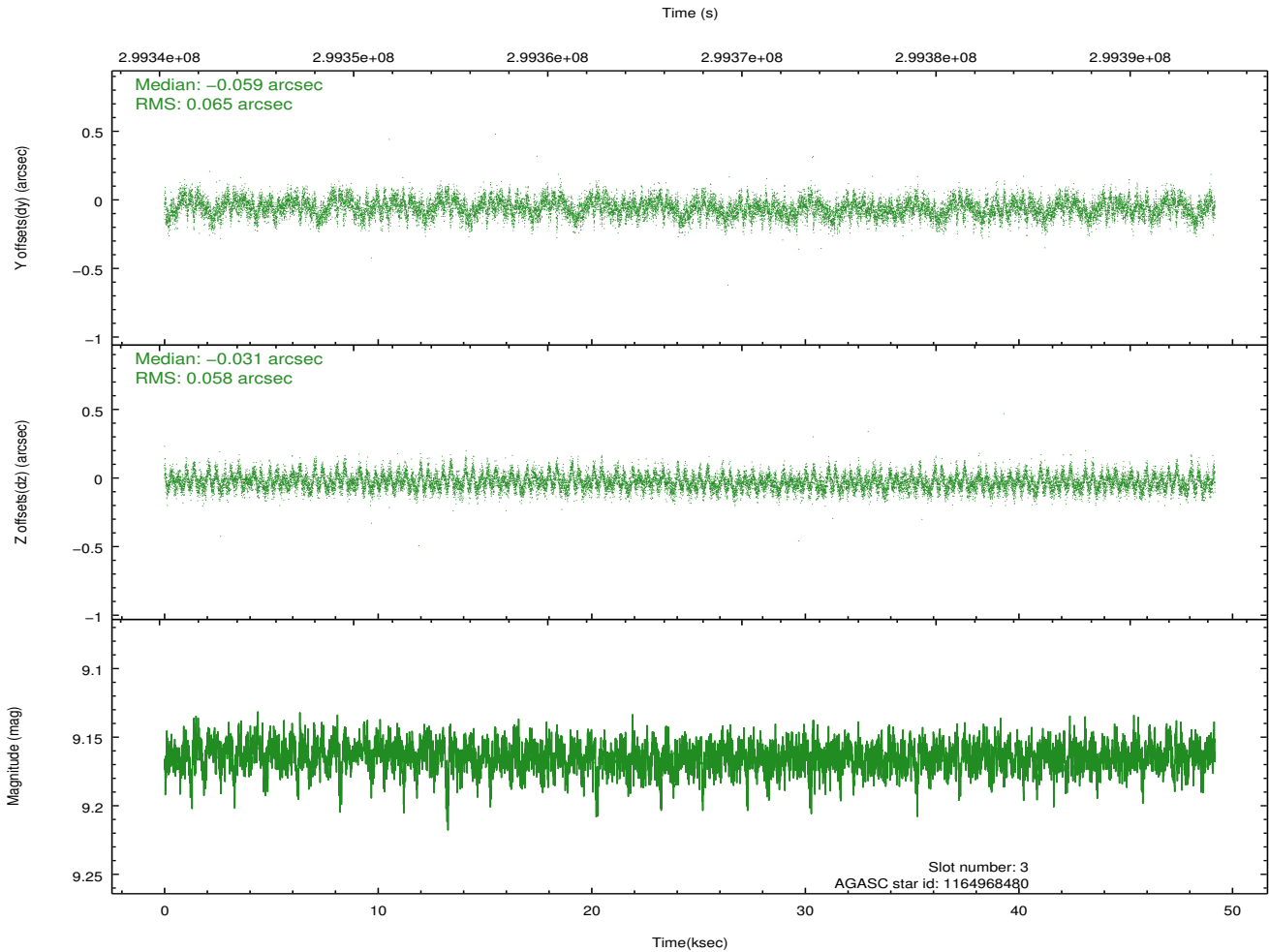
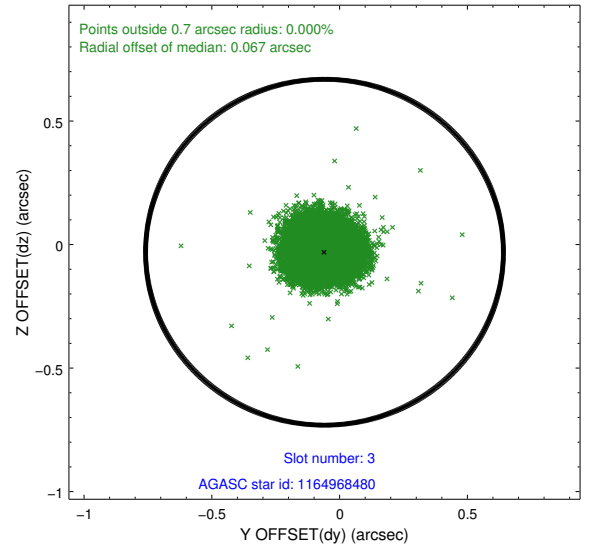
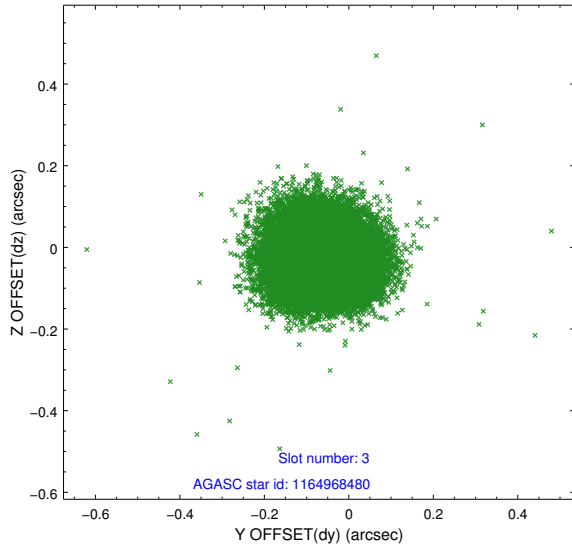


Slot Statistics

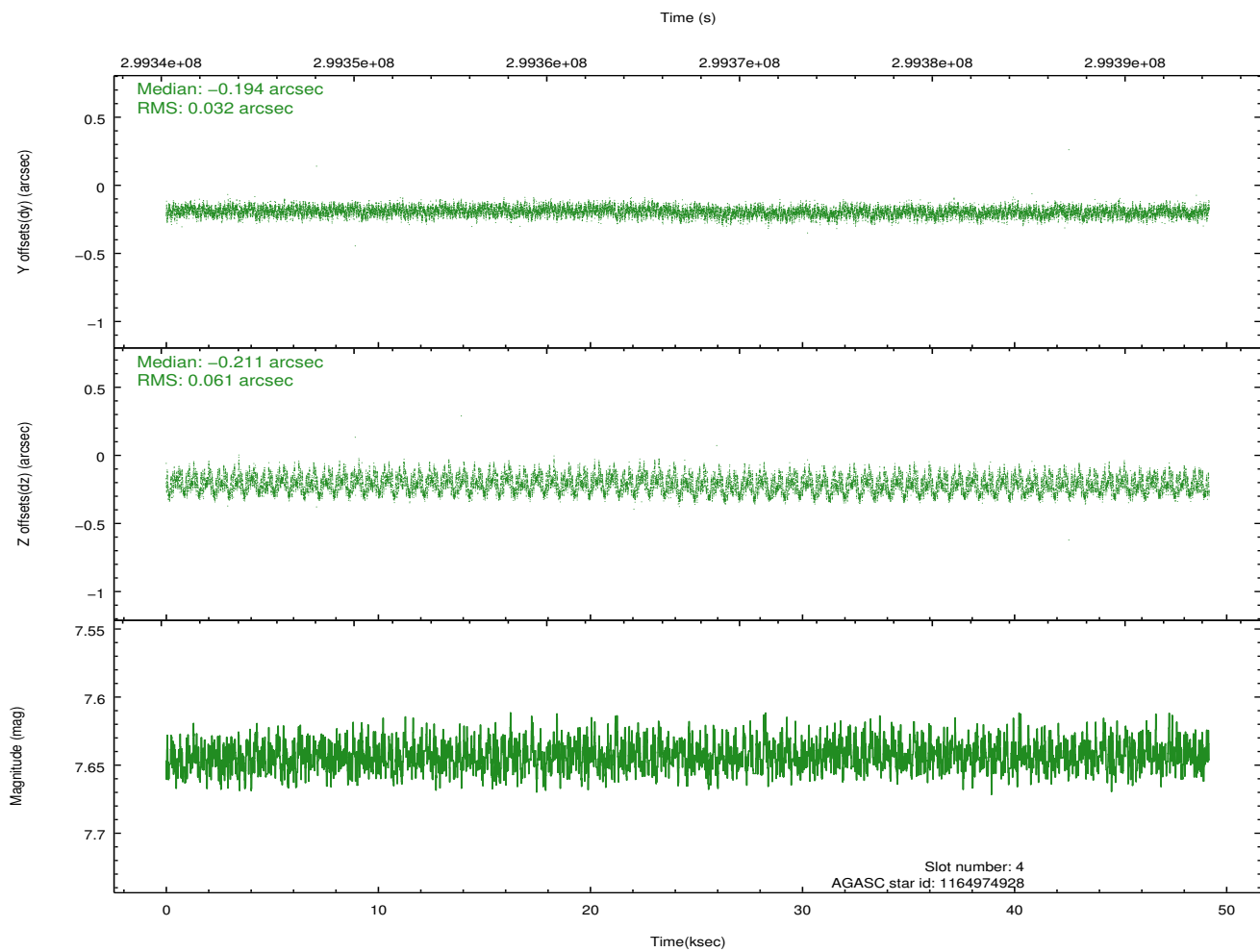
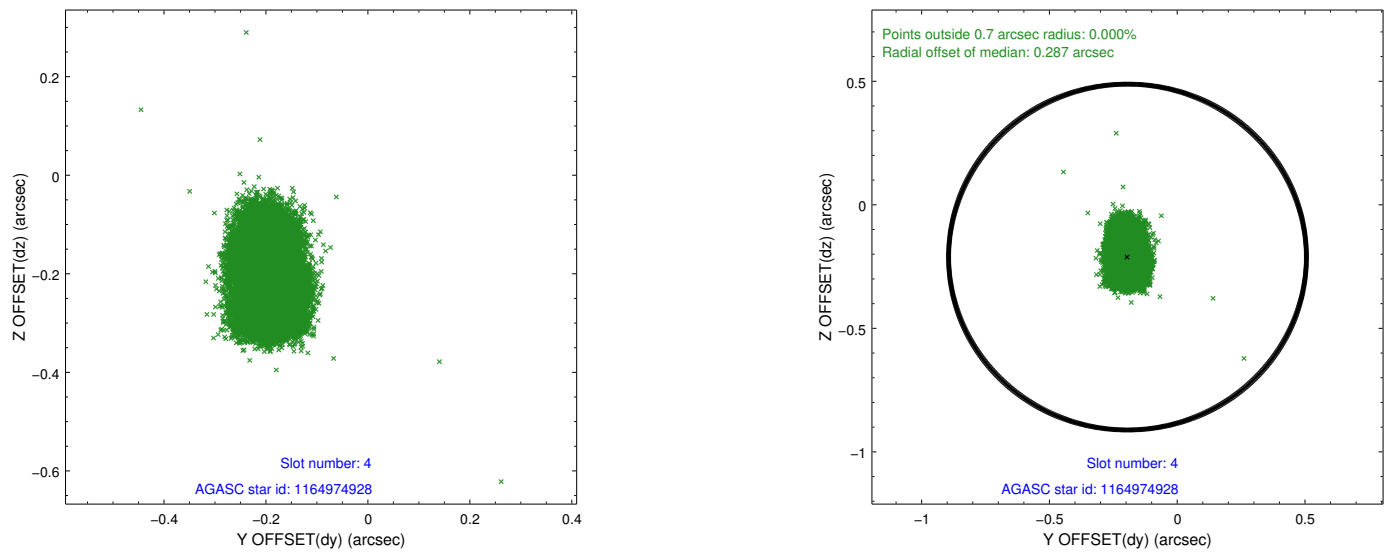
slot	status	id	mag	n_pts	med_dy	med_dz	dr1	dr2	ra	dec	mean_y	mean_z
0	FID	ACIS-I-1	7.23	11995	0.030	0.005	0.013	0.032	0.000000	0.000000	927.39	-837.77
1	FID	ACIS-I-5	7.23	11996	-0.203	0.037	0.011	0.021	0.000000	0.000000	-1820.97	1059.75
2	FID	ACIS-I-6	7.24	11995	0.083	0.030	0.015	0.027	0.000000	0.000000	392.99	1704.24
3	GUIDE	1164968480	9.16	23979	-0.059	-0.031	0.093	0.148	72.282043	-66.561249	2180.26	1312.05
4	GUIDE	1164974928	7.64	23987	-0.194	-0.211	0.075	0.118	72.355624	-66.830232	1725.85	2173.34
5	GUIDE	1165103000	9.68	23960	0.147	-0.051	0.108	0.175	74.083726	-66.640675	-328.46	663.03
6	GUIDE	1165103200	9.14	23975	0.058	0.108	0.097	0.158	74.569037	-66.260082	-521.58	-862.43
7	GUIDE	1165103840	9.77	23959	0.050	0.180	0.120	0.192	74.488651	-66.144068	-271.46	-1216.68

2.4 Star Slots

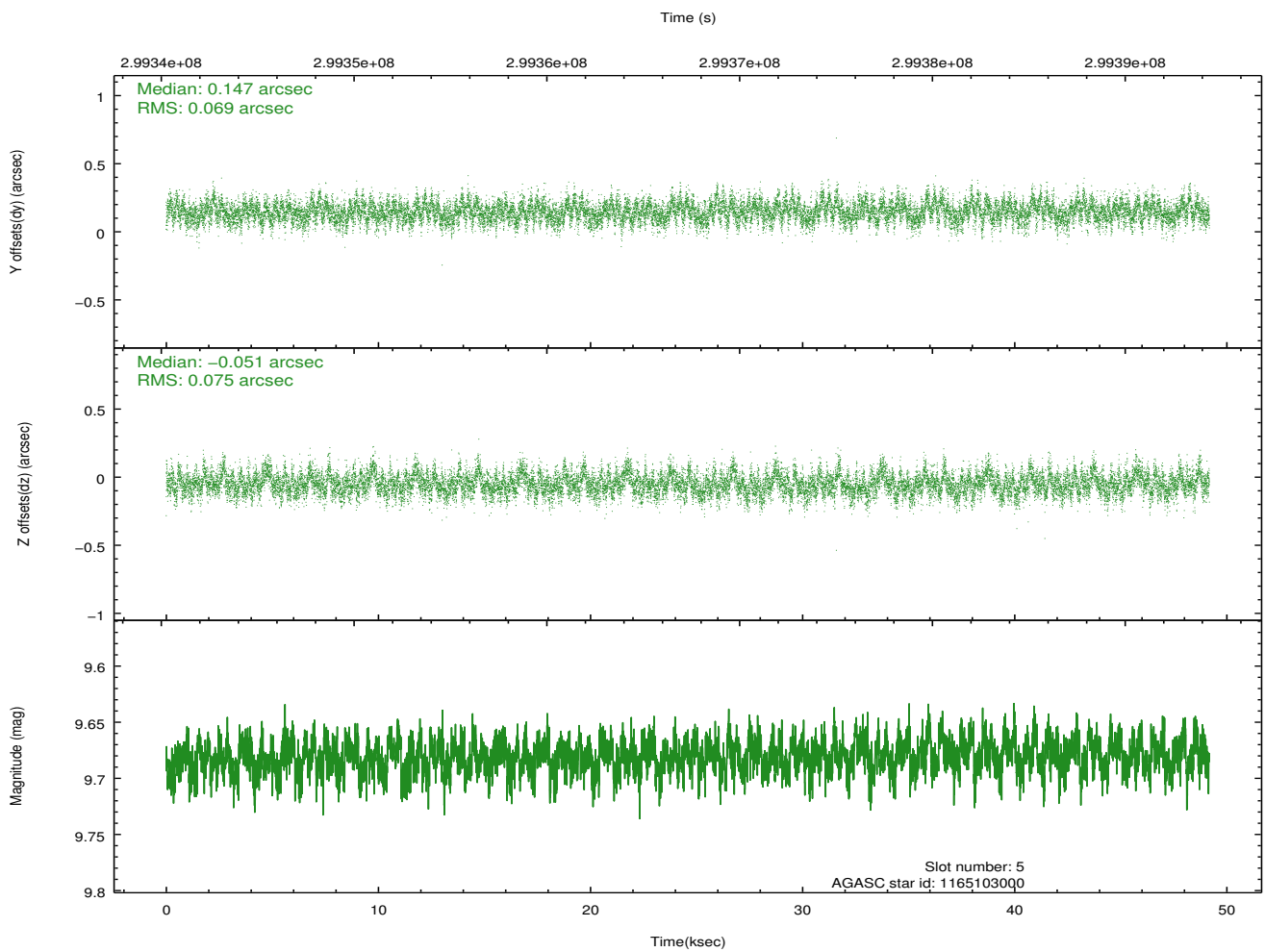
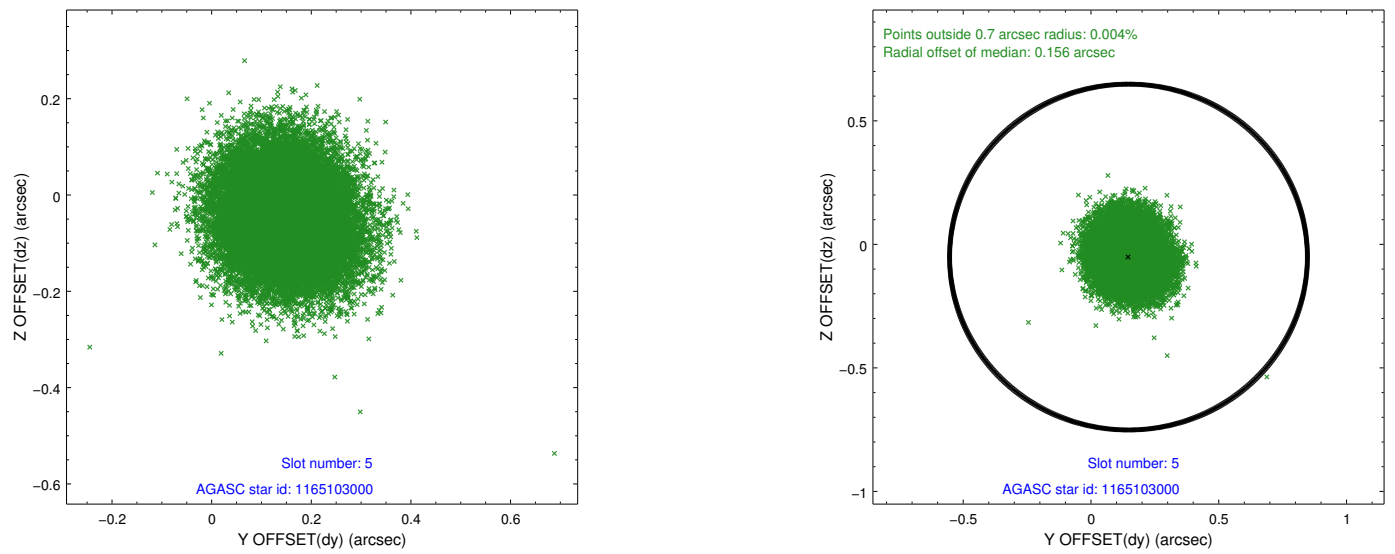
2.4.1 Slot 3



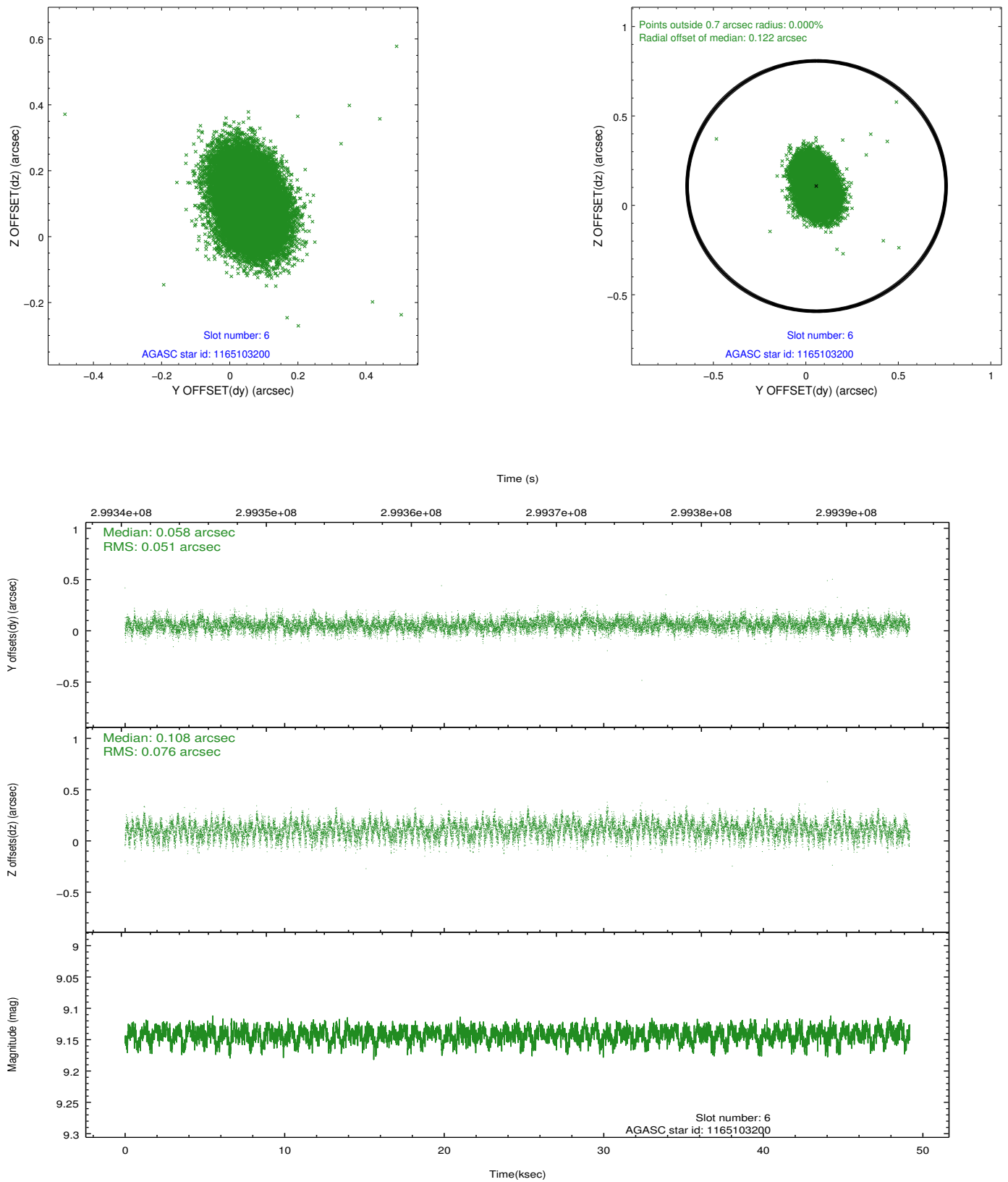
2.4.2 Slot 4



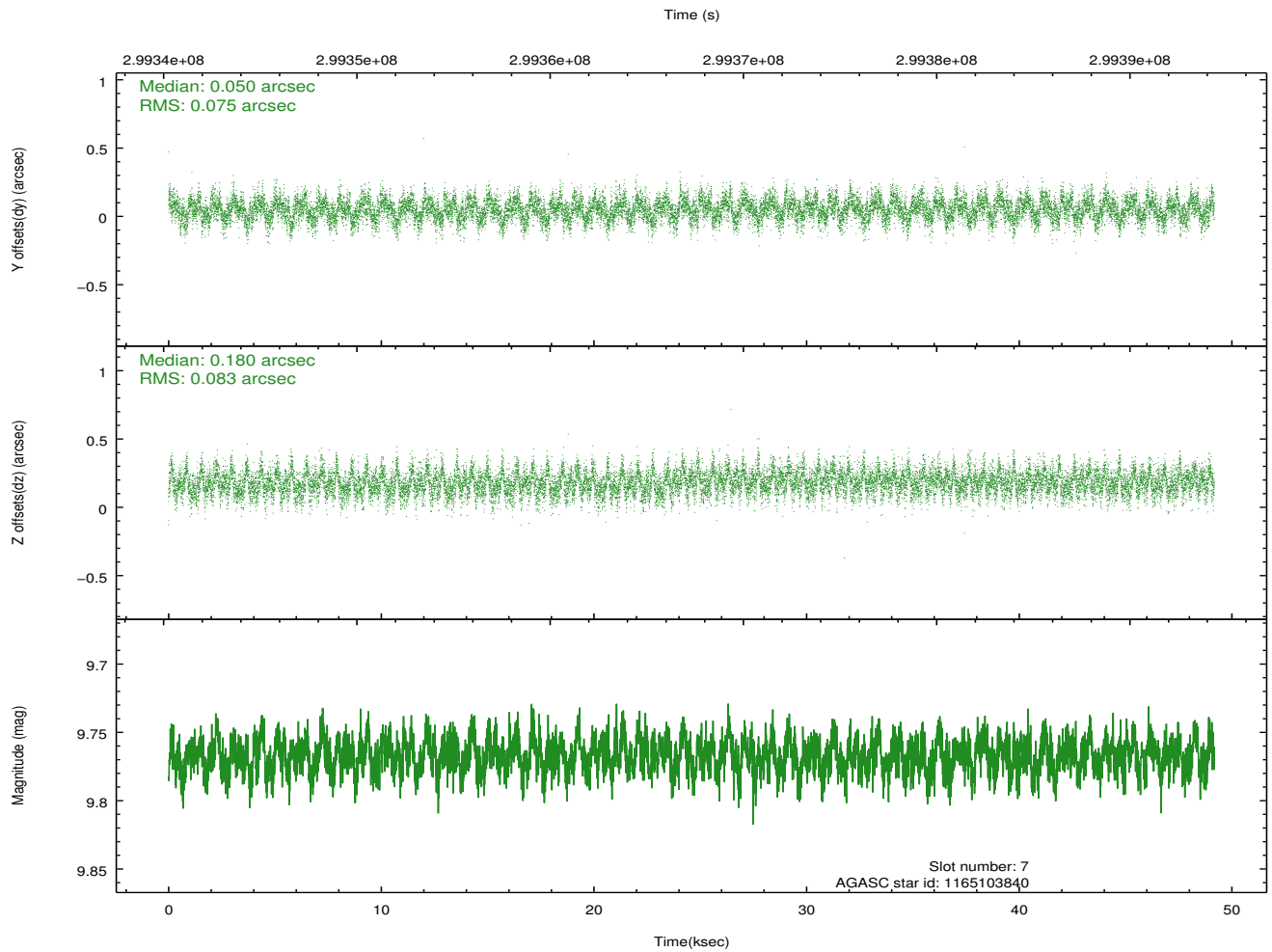
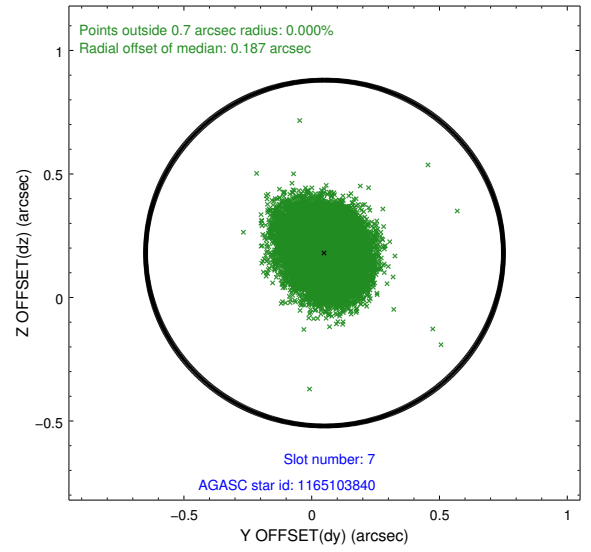
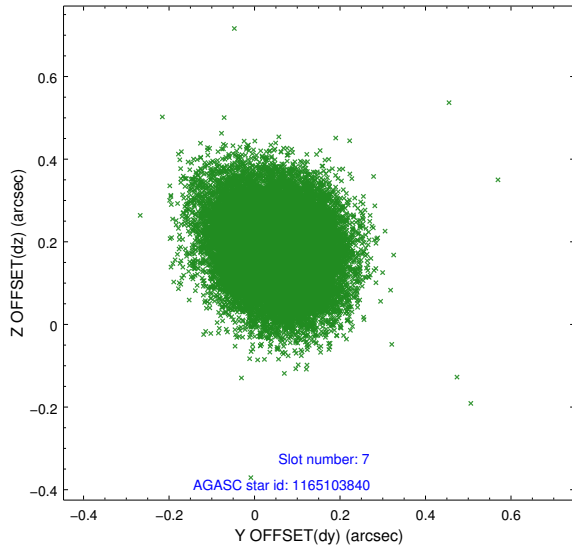
2.4.3 Slot 5



2.4.4 Slot 6

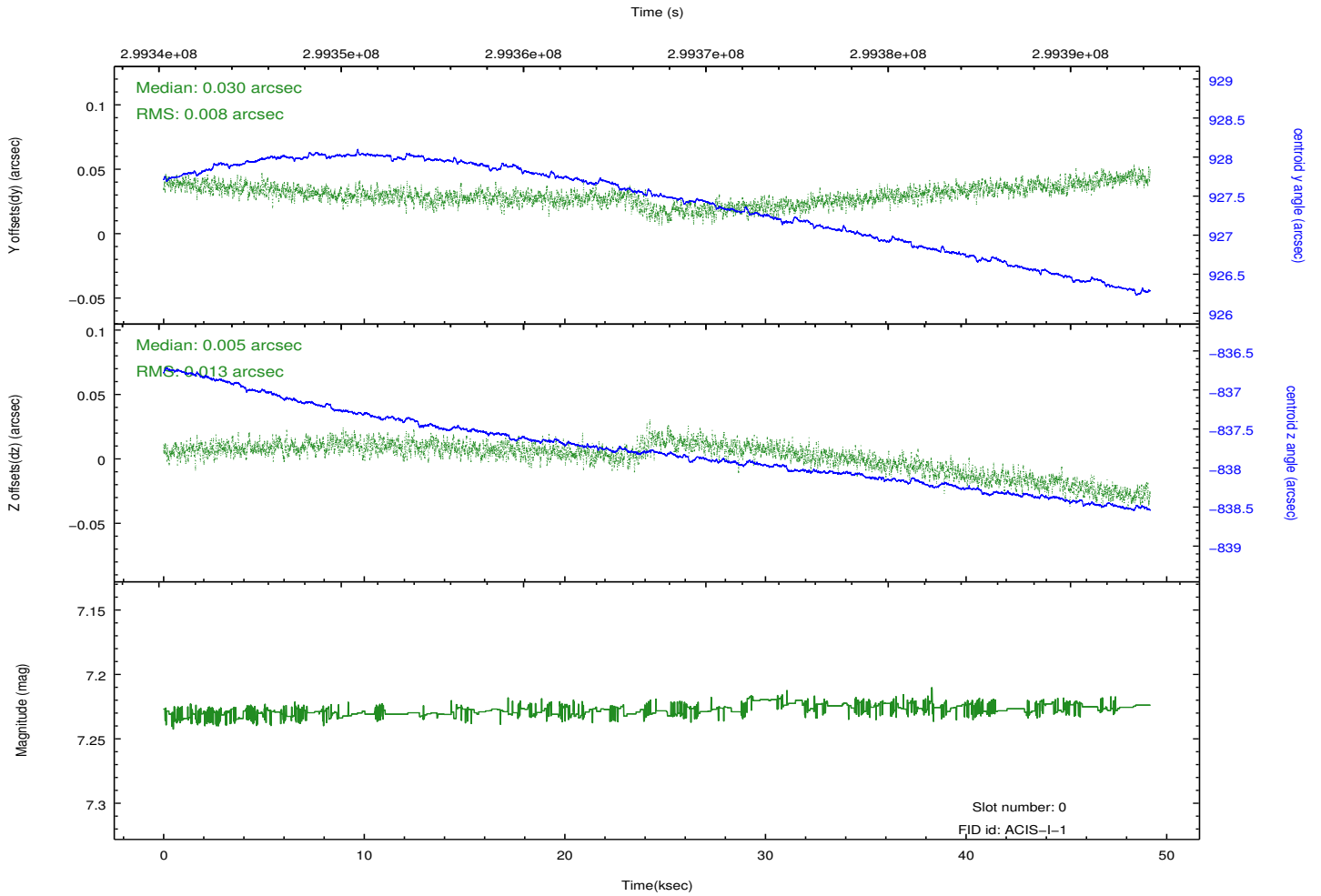
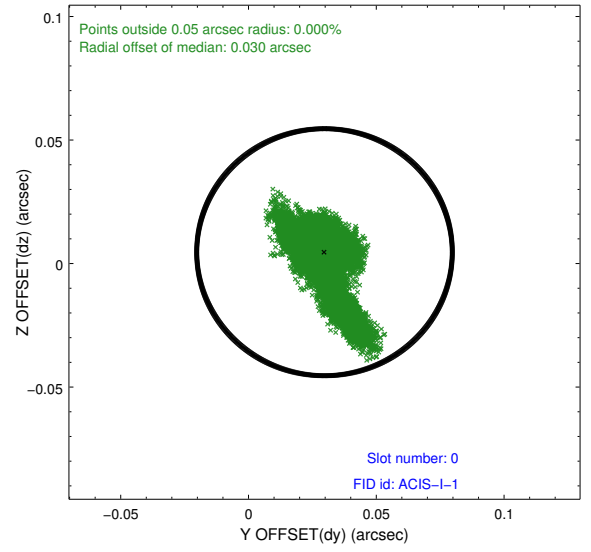
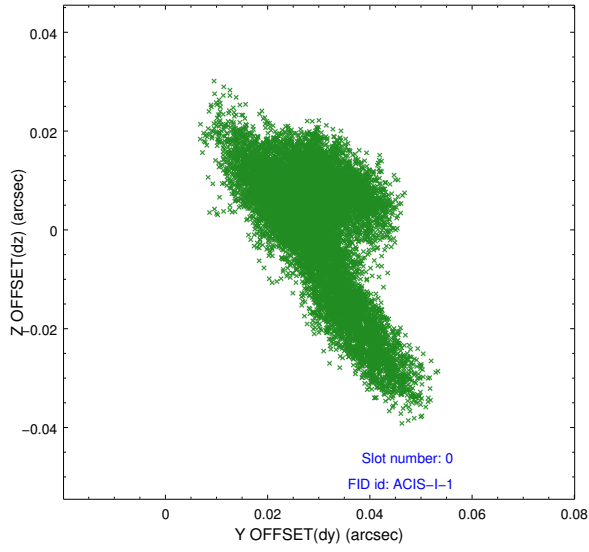


2.4.5 Slot 7

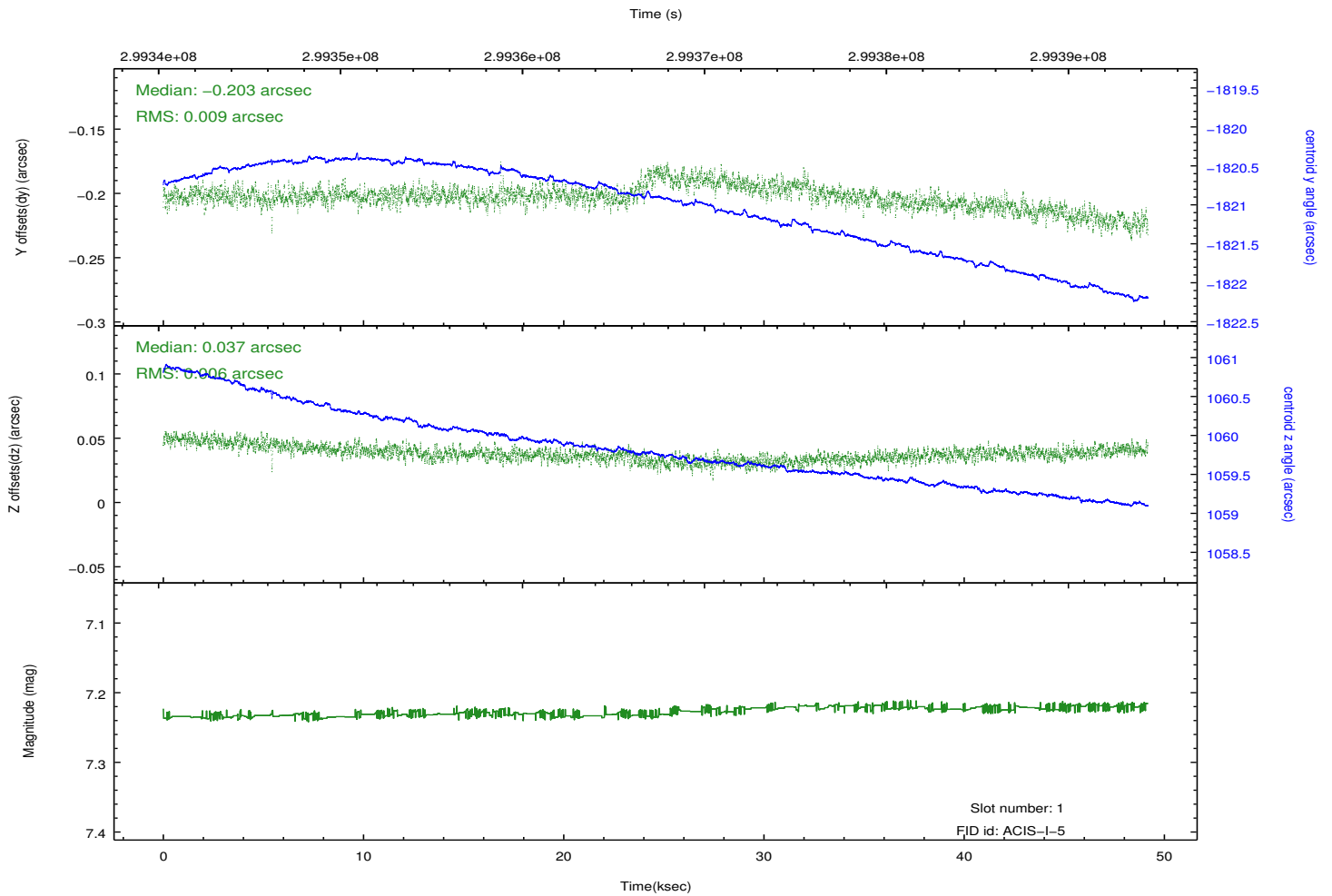
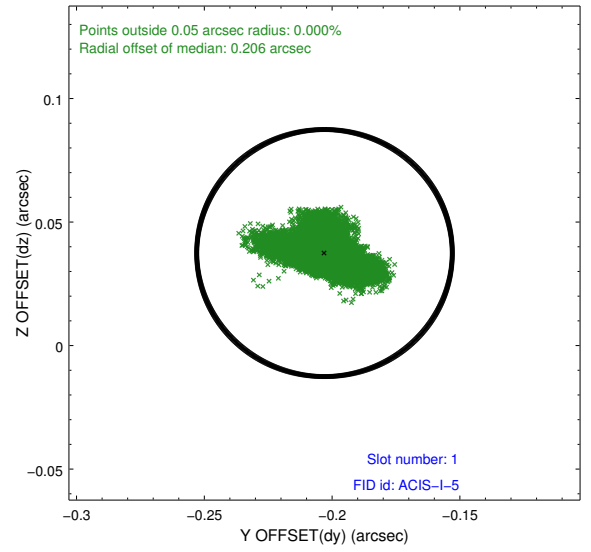
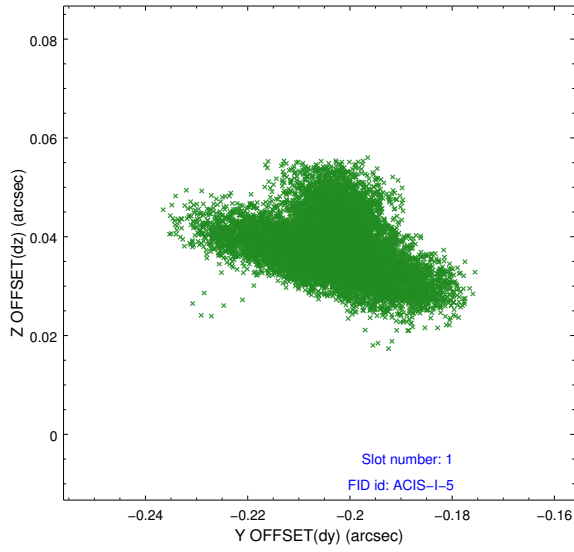


2.5 FID Slots

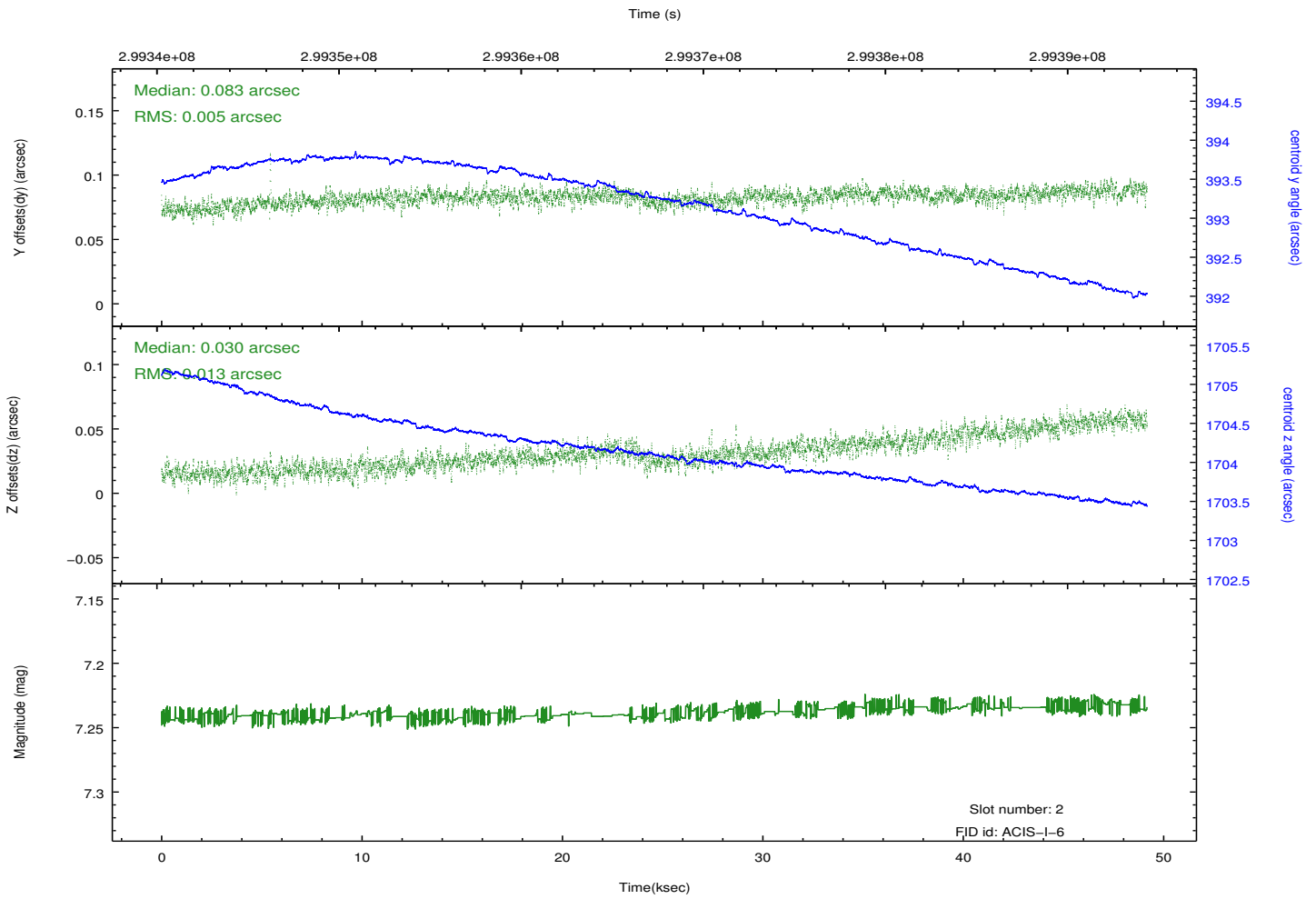
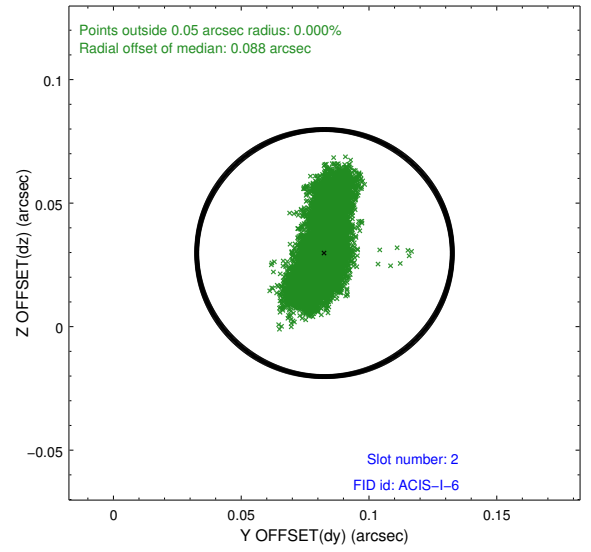
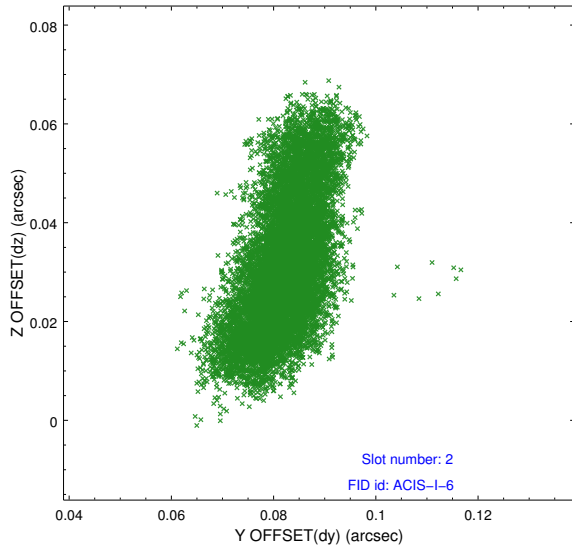
2.5.1 Slot 0



2.5.2 Slot 1



2.5.3 Slot 2



A Summary

A.1 Status

V&V Scientist	Joy Nichols
V&V Date (YYYY-MM-DD)	2012.04.27
V&V Edition	1
V&V Disposition and Status	OK
V&V Charge Time	49.0847998

A.2 Comments