

V&V Reference Report

L2 ASCDS Version : 8.4.5

Observation 847 - L2 Version 4
Chandra X-Ray Center

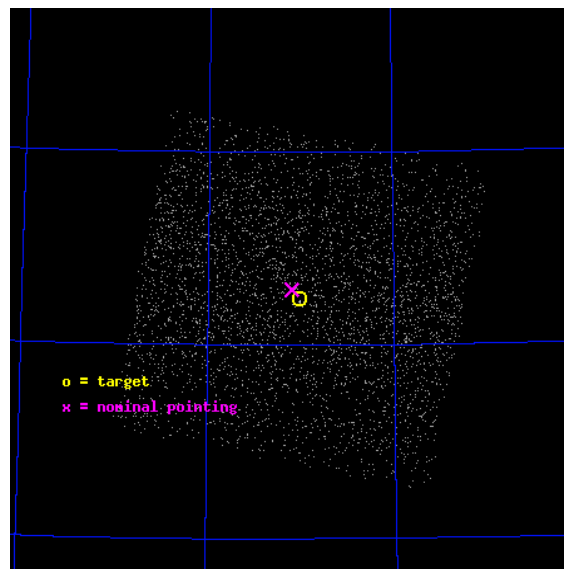
L2 Processing Date : Sep 1 2012

Contents

1	Front	2
2	OBI Primary	3
2.1	OBI	3
2.1.1	Images	3
2.1.2	Bias	3
2.1.3	Parameters	4
2.1.4	Events	4
2.2	Compared Parameters	5
2.3	Aspect	6
2.4	Star Slots	9
2.4.1	Slot 3	9
2.4.2	Slot 4	10
2.4.3	Slot 5	11
2.4.4	Slot 6	12
2.4.5	Slot 7	13
2.5	FID Slots	14
2.5.1	Slot 0	14
2.5.2	Slot 1	15
2.5.3	Slot 2	16
3	OBI Secondary	17
3.1	OBI	17
3.1.1	Images	17
3.1.2	Bias	17
3.1.3	Parameters	18
3.1.4	Events	18
A	Summary	19
A.1	Status	19
A.2	Comments	19

1 Front

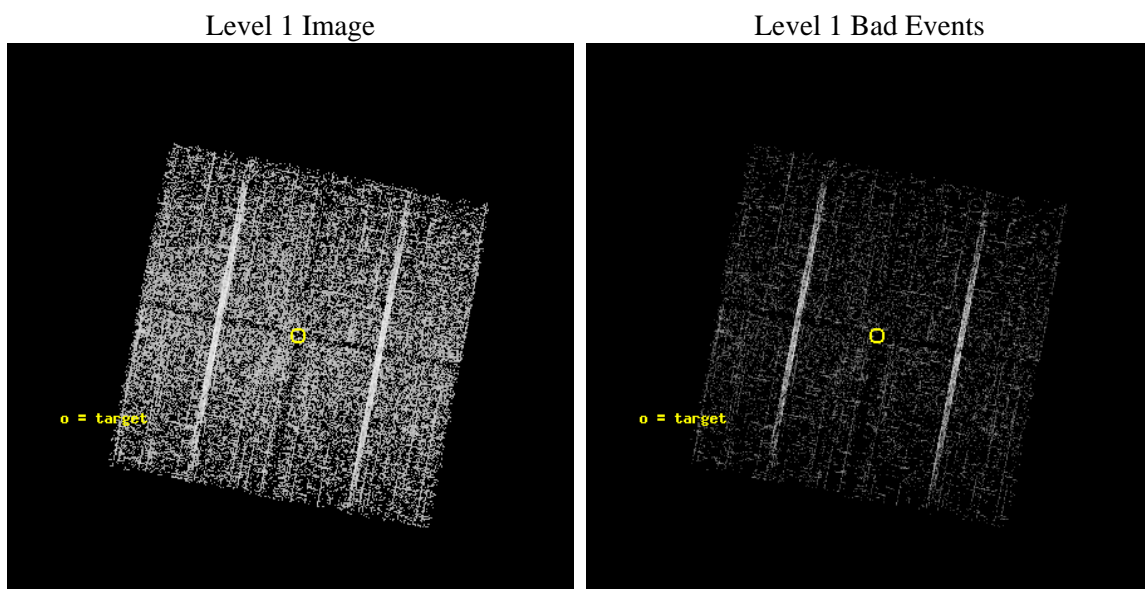
seq_num	700152	Sequence number
obs_id	847	Observation id
title	THE X-RAY JET AND HALO OF NGC 6251	Proposal title
observer	DR. JUERGEN KERP	Principal investigator
object	NGC 6251	Source name
dtcycle	0	
cycle	P	events are from which exps? P[primary] S[econdar
ra_targ	248.1325	Observer's specified target RA [deg]
dec_targ	82.541111	Observer's specified target Dec [deg]
ra_nom	248.1858763342	Nominal RA [deg]
dec_nom	82.548031515696	Nominal Dec [deg]
roll_nom	281.06767026135	Nominal Roll [deg]
revision	4	Processing version of data
ontime	6378.3629620075	Sum of GTIs [s]
livetime	383.18612498243	Livetime [s]
ontime0	6378.2398420125	Sum of GTIs [s]
ontime1	6378.2808820009	Sum of GTIs [s]
ontime2	6378.3219220042	Sum of GTIs [s]
ontime3	6378.3629620075	Sum of GTIs [s]
l2events	3817	Number of level 2 events



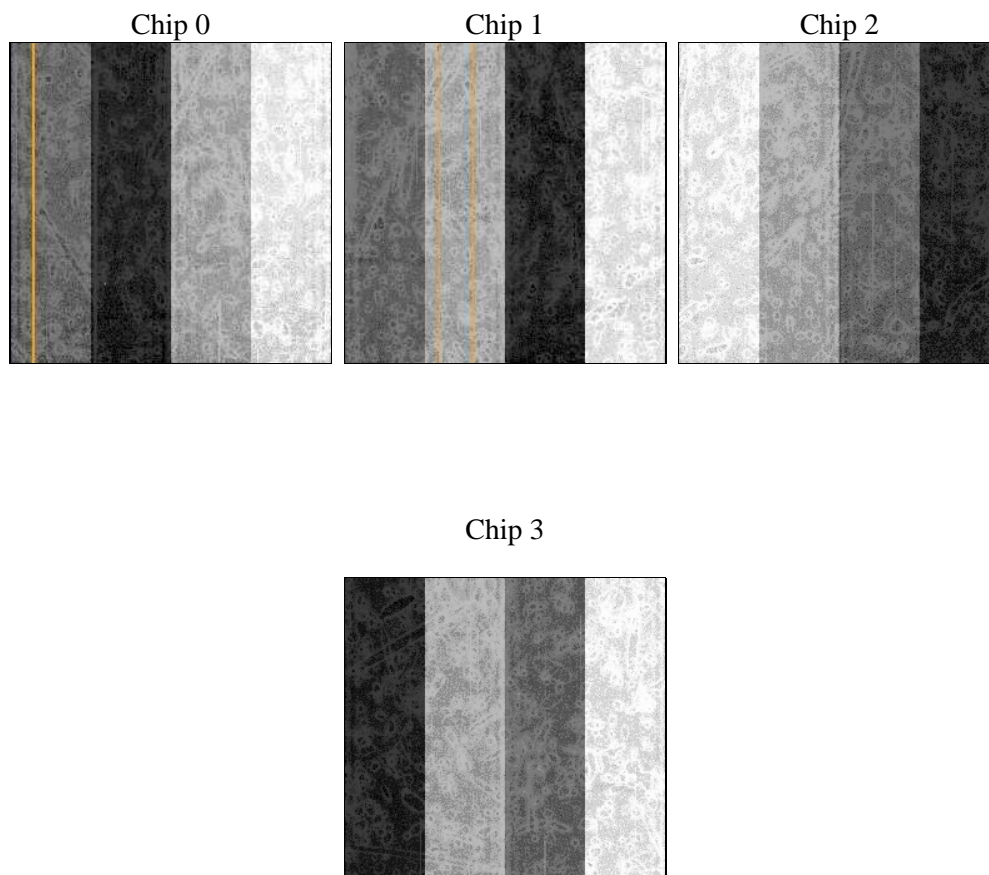
2 OBI Primary

2.1 OBI

2.1.1 Images



2.1.2 Bias



2.1.3 Parameters

obi_num	0	Obi number	sched_exp_time	37325.000000	[s] Scheduled observation exposure time
ascdsver	8.4.5	Processing system revision	ontime	6378.3629620075	Sum of GTIs [s]
caldbver	4.5.1.1	 	ontime0	6378.2398420125	Sum of GTIs [s]
date	2012-09-01T16:20:47	Date and time of file creation	ontime1	6378.2808820009	Sum of GTIs [s]
revision	4	Processing version of data	ontime2	6378.3219220042	Sum of GTIs [s]
			ontime3	6378.3629620075	Sum of GTIs [s]
			l1events	80763	Number of level 1 events

2.1.4 Events

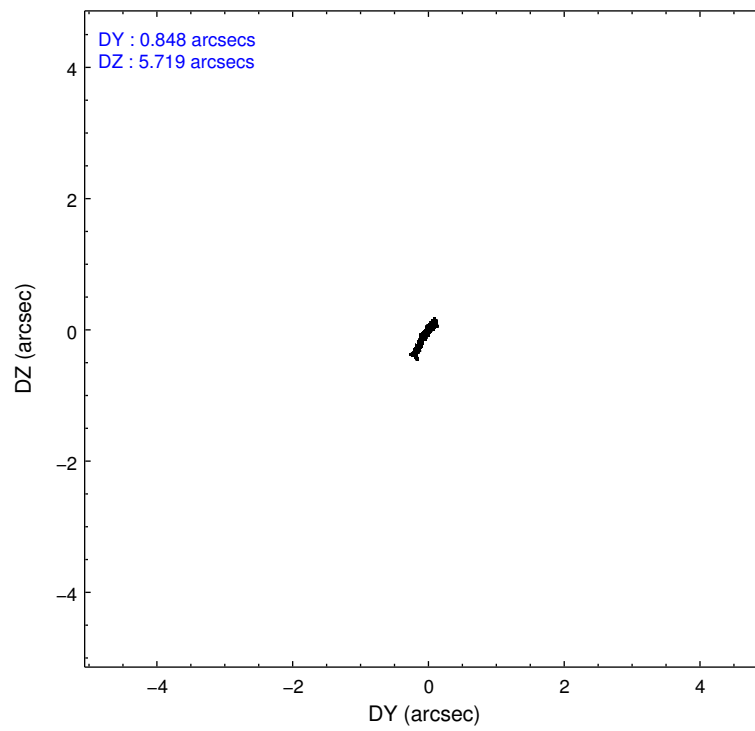
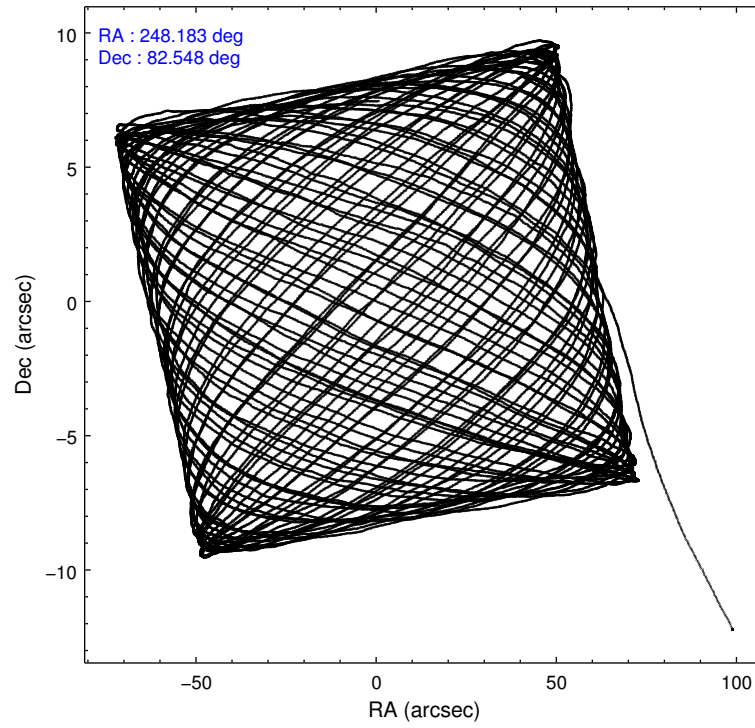
	ccd 0	ccd 1	ccd 2	ccd 3
level 1 events	18969	19036	21822	20936
rejected events	17697	17623	20574	19664
rejected %	93%	92%	94%	93%

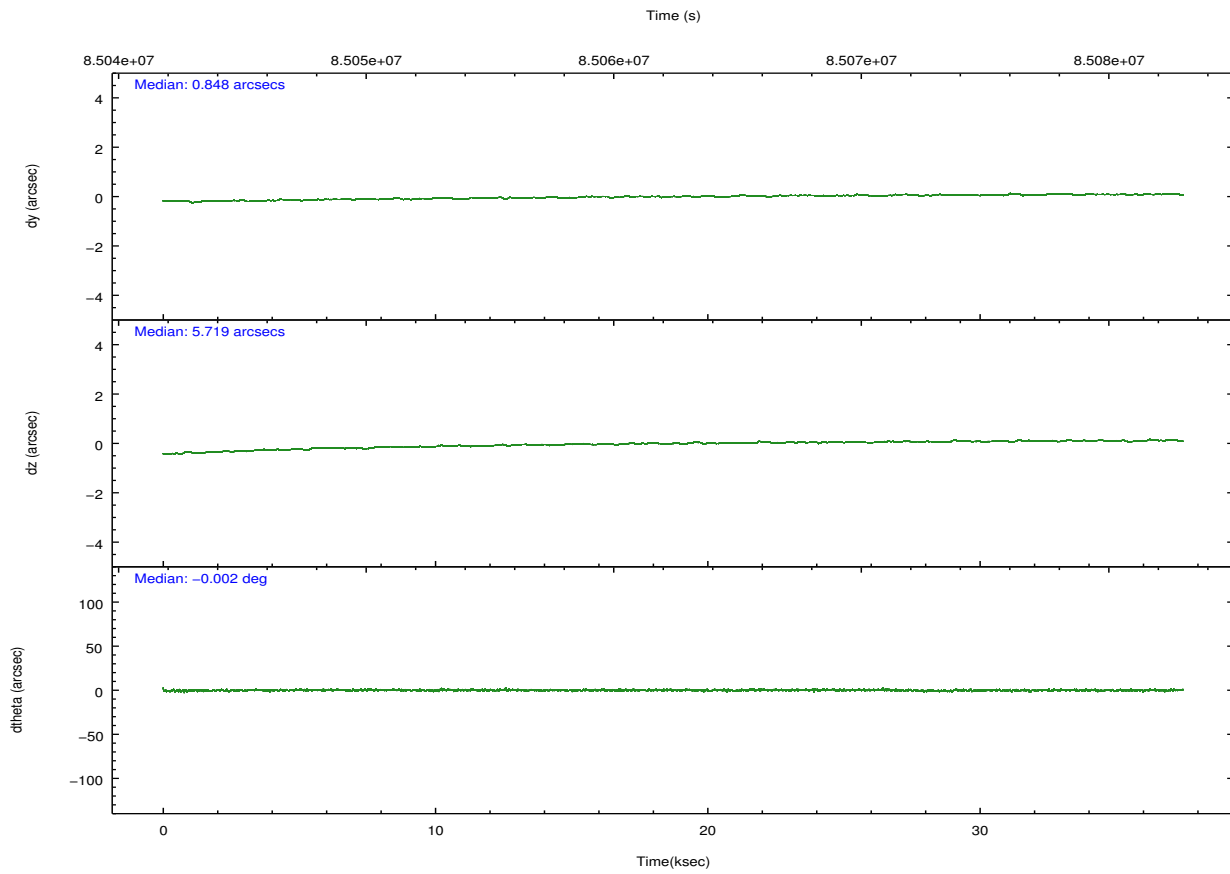
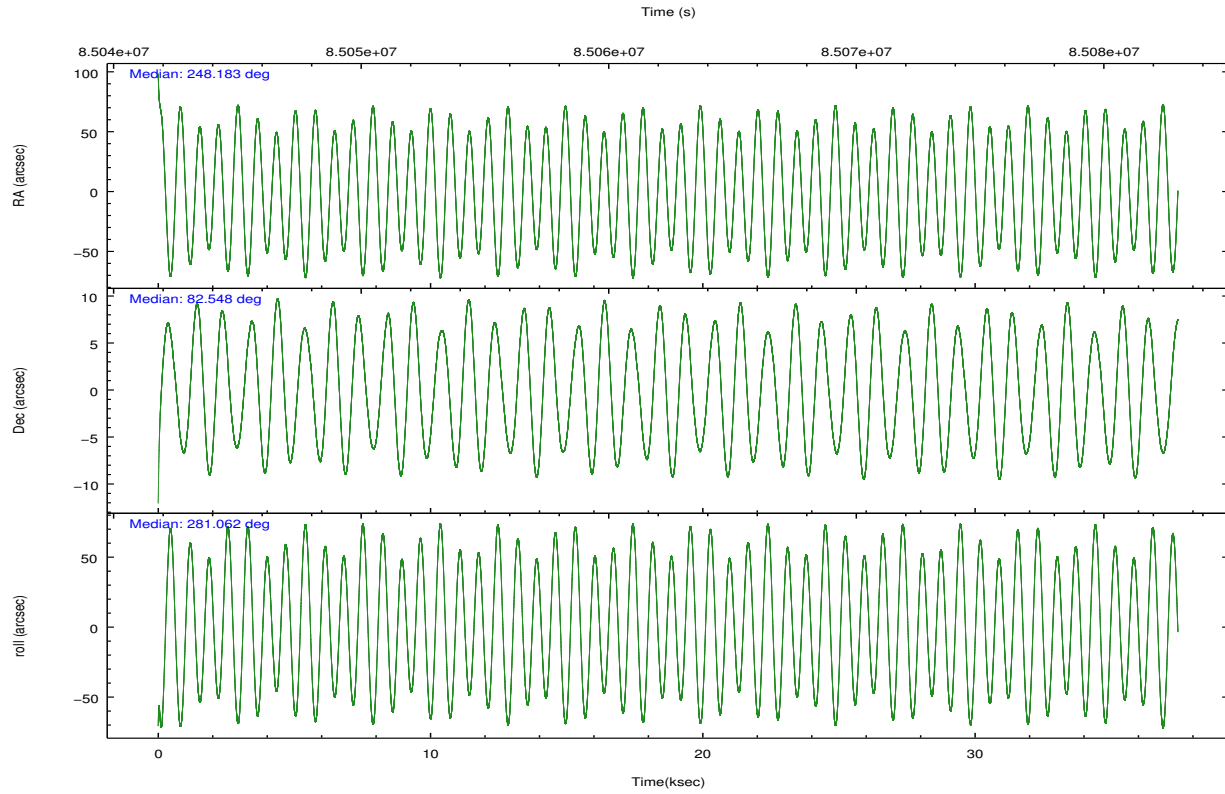
	ccd 0	ccd 1	ccd 2	ccd 3
grade 0 events	351	371	361	332
	1%	1%	1%	1%
grade 1 events	3	1	3	8
	0%	0%	0%	0%
grade 2 events	293	266	279	293
	1%	1%	1%	1%
grade 3 events	216	253	215	230
	1%	1%	0%	1%
grade 4 events	213	261	191	207
	1%	1%	0%	0%
grade 5 events	452	476	431	475
	2%	2%	1%	2%
grade 6 events	243	302	244	250
	1%	1%	1%	1%
grade 7 events	17198	17106	20098	19141
	90%	89%	92%	91%

2.2 Compared Parameters

Parameter	Planned	Actual	Parameter	Planned	Actual
Instrument	ACIS	ACIS	Obspar format version number	7	7
Detector	ACIS-0123	ACIS-0123	Obspar file type	PREDICTED	ACTUAL
Grating	NONE	NONE	Obspar update status	NONE	UPDATED
Data mode	VFAINT	VFAINT	Number of optional ACIS chips dropped	0	0
Observation mode	POINTING	POINTING	On-chip summing requested	N	N
[deg] Pointing RA	248.046511	248.1858763341952	Subarray requested	NONE	NONE
[deg] Pointing Dec	82.568845	82.54803151569588	Alternating exposures requested	Y	Y
[deg] Pointing Roll	280.997143	281.067670261354	[s] Primary exposure time	0.200000	0.2
[mm] SIM focus pos	-0.782348	-0.7809083437167272	[s] Secondary exposure time	3.200000	3.2
[mm] SIM defocus	0	0.001439871863259334	Duty cycle	5	5
[mm] SIM translation stage pos	-233.592463	-233.5874344608287			
[mm] SIM translation stage offset	0	-0.005018542100998502			
[s] Observation start time (MET)	85043795.184000	85042265.947469			
Observation start date	2000-09-11T07:15:31	2000-09-11T06:51:05			
[s] Observation end time (MET)	85081120.184000	85082013.91146301			
Observation end date	2000-09-11T17:37:36	2000-09-11T17:53:33			
Read mode	TIMED	TIMED			

2.3 Aspect



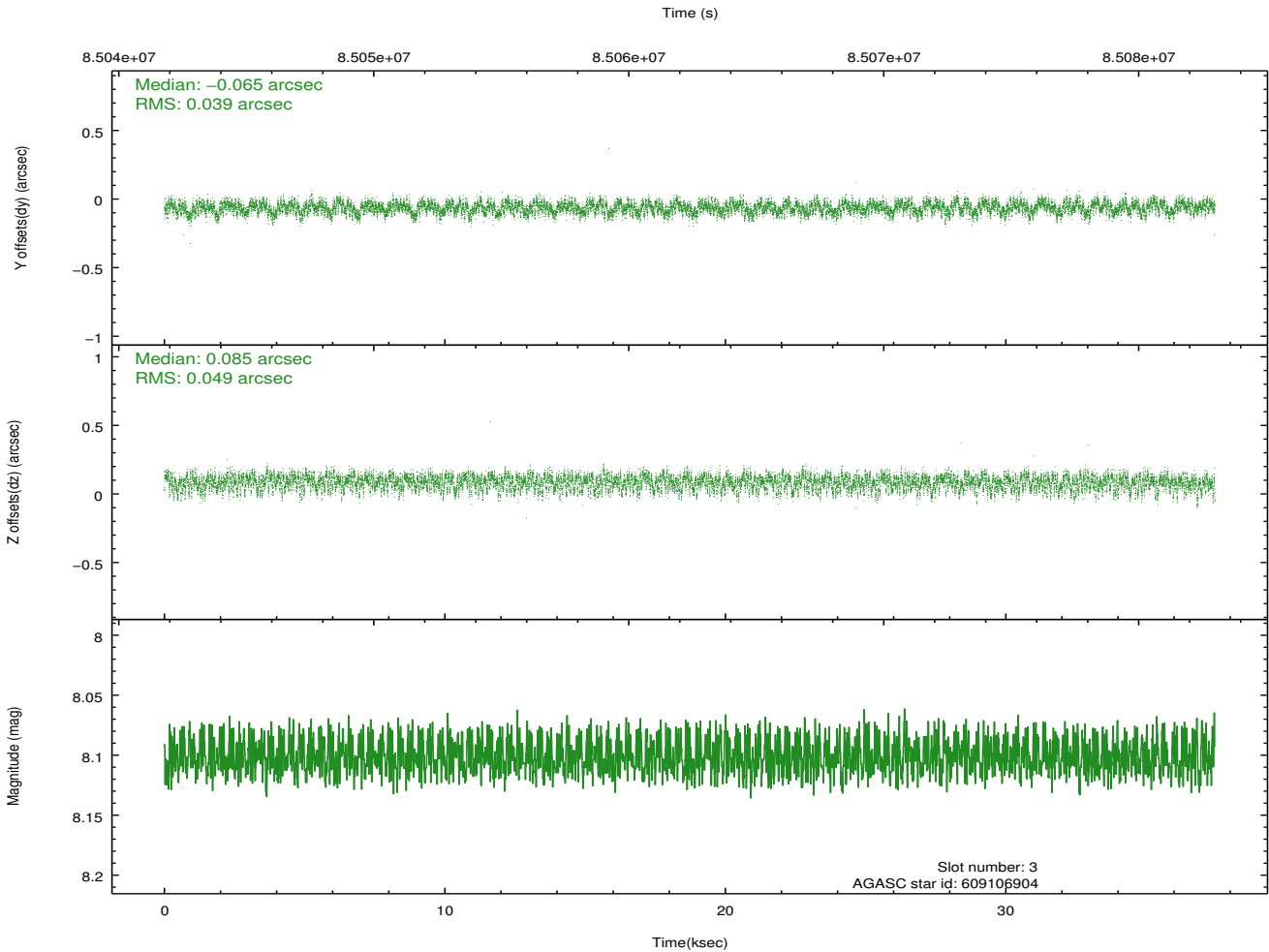
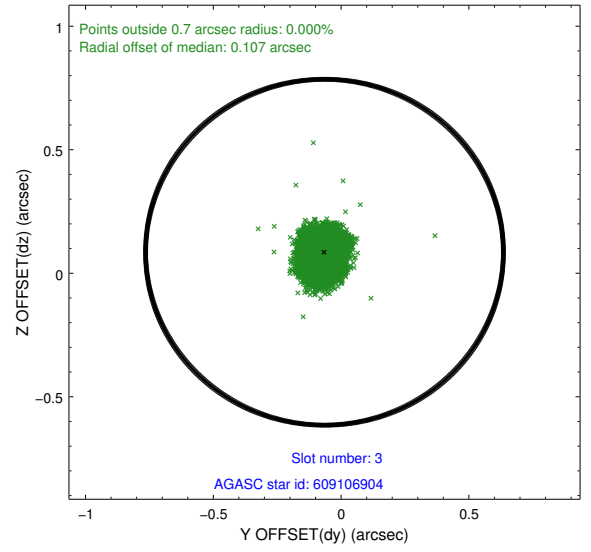
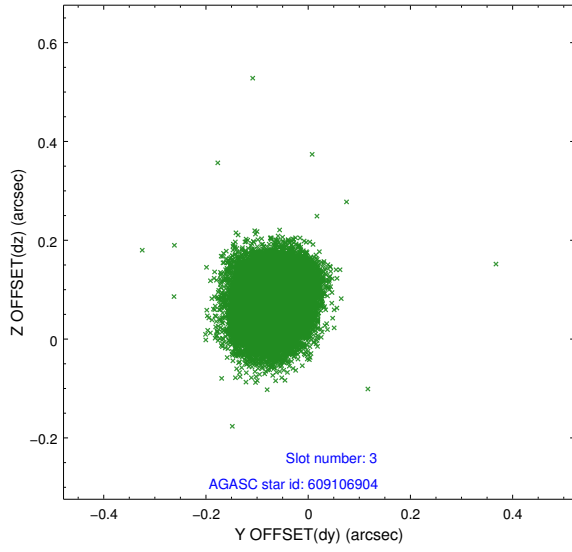


Slot Statistics

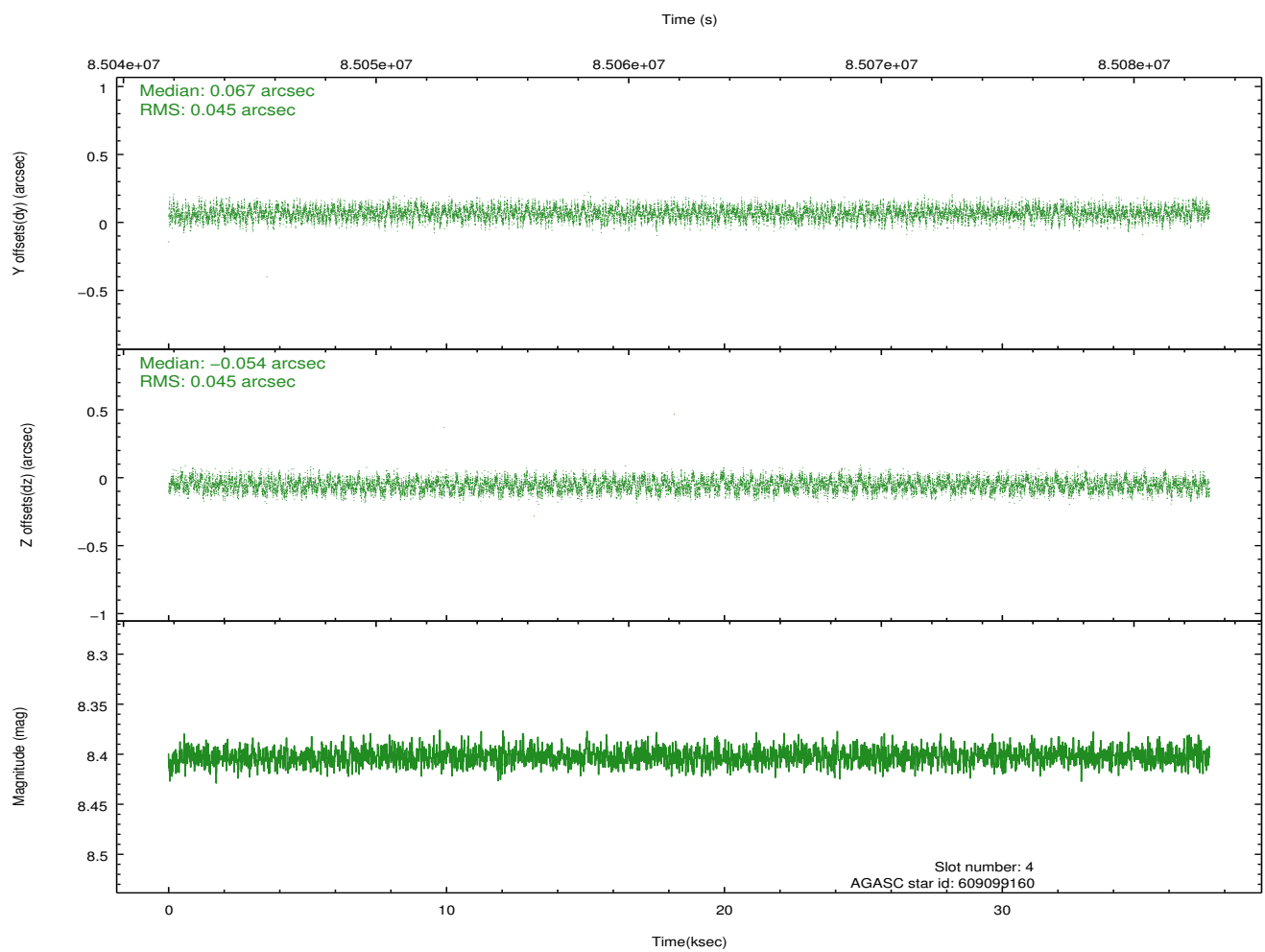
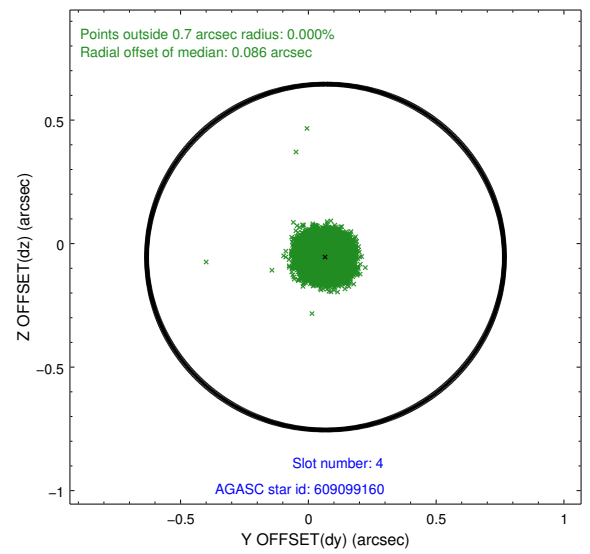
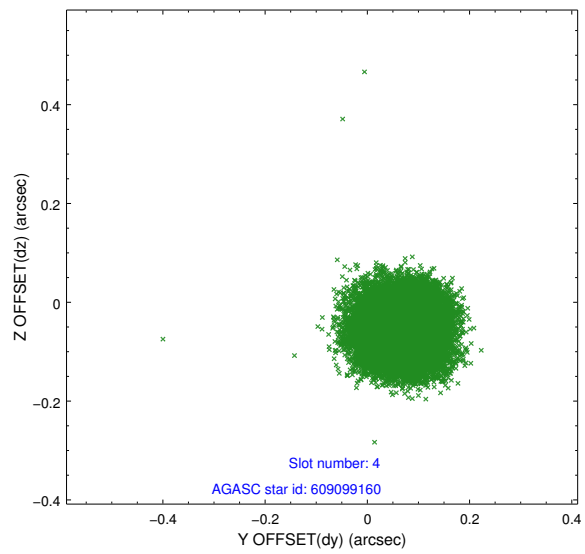
slot	status	id	mag	n_pts	med_dy	med_dz	dr1	dr2	ra	dec	mean_y	mean_z
0	FID	ACIS-I-2	7.15	9132	-0.031	-0.046	0.010	0.018	0.000000	0.000000	-755.18	-835.44
1	FID	ACIS-I-4	7.18	9133	-0.054	0.039	0.007	0.017	0.000000	0.000000	2158.84	1070.80
2	FID	ACIS-I-5	7.23	9133	-0.016	0.076	0.010	0.019	0.000000	0.000000	-1808.96	1068.72
3	GUIDE	609106904	8.10	18265	-0.065	0.085	0.067	0.106	243.316021	82.631901	-725.82	-2080.11
4	GUIDE	609099160	8.40	18266	0.067	-0.054	0.069	0.105	251.337963	83.185048	-1948.38	1811.00
5	GUIDE	609106008	9.42	18112	0.021	-0.136	0.107	0.175	252.491283	83.185526	-1888.90	2300.20
6	GUIDE	600186216	9.26	18253	-0.103	0.090	0.115	0.176	246.671823	81.887151	2268.32	-1150.59
7	GUIDE	609102344	9.65	18250	0.075	0.016	0.086	0.140	248.941637	82.969142	-1341.53	663.47

2.4 Star Slots

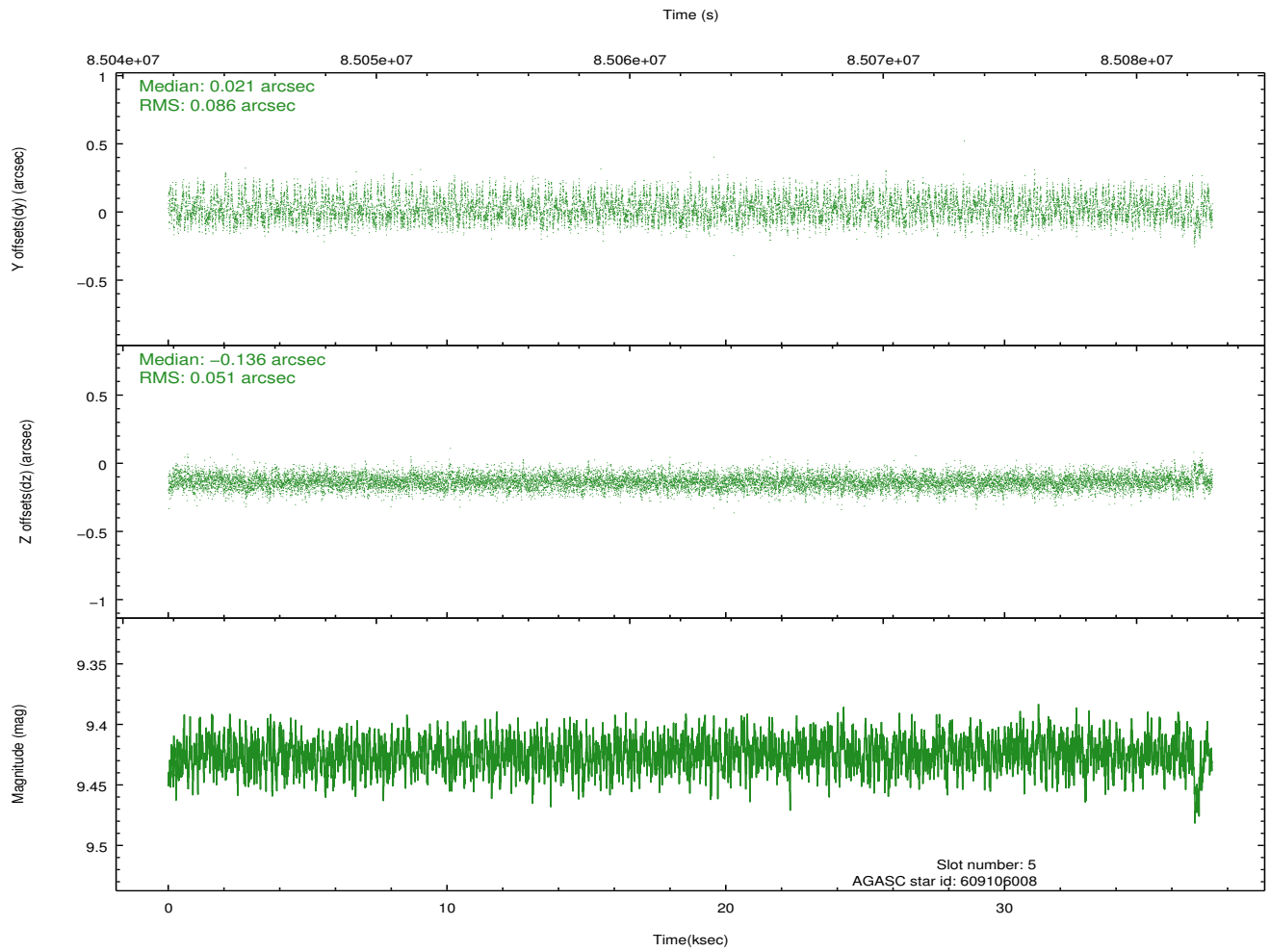
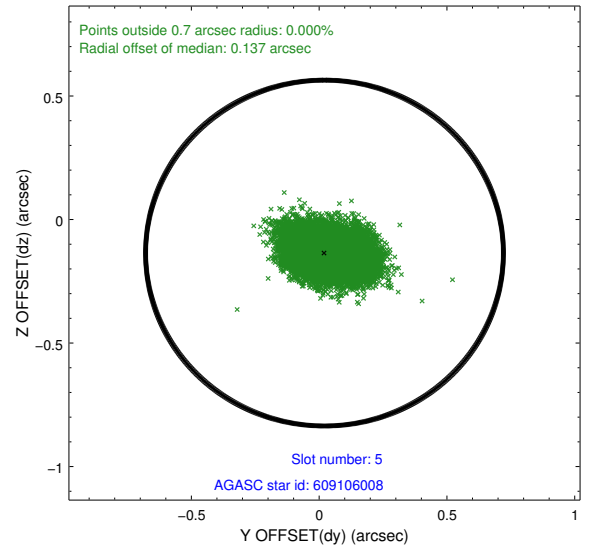
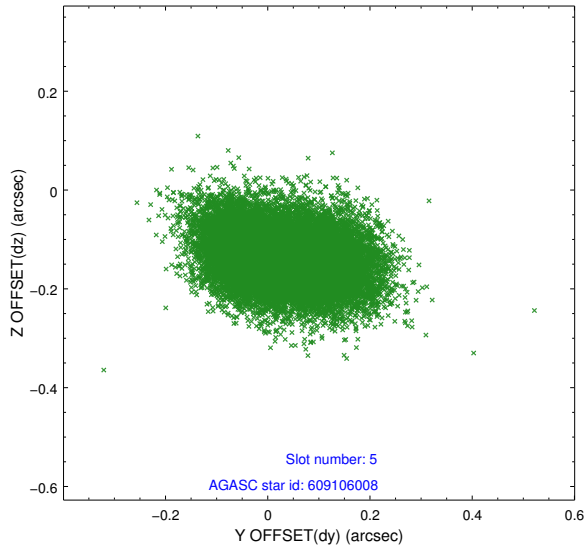
2.4.1 Slot 3



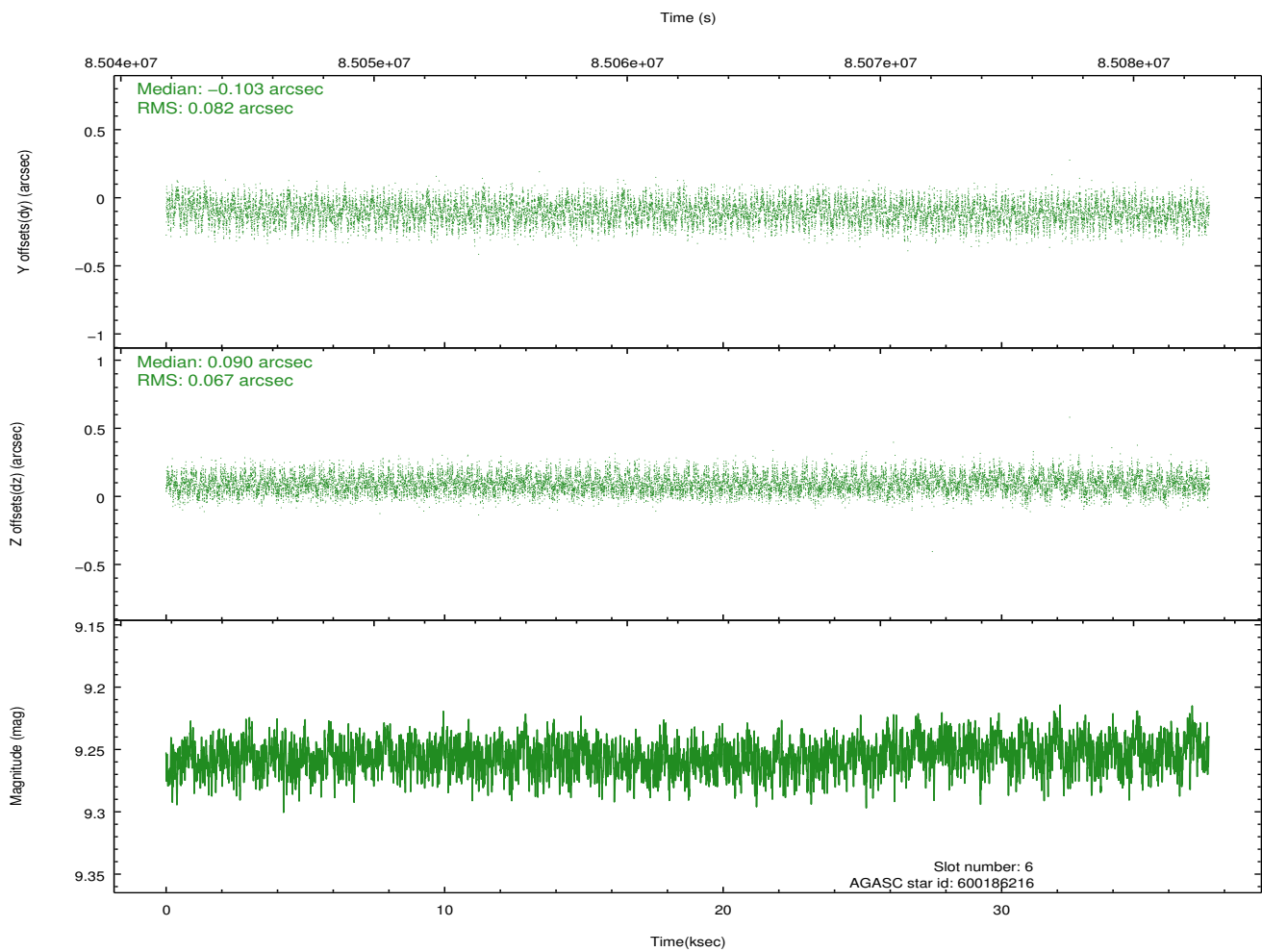
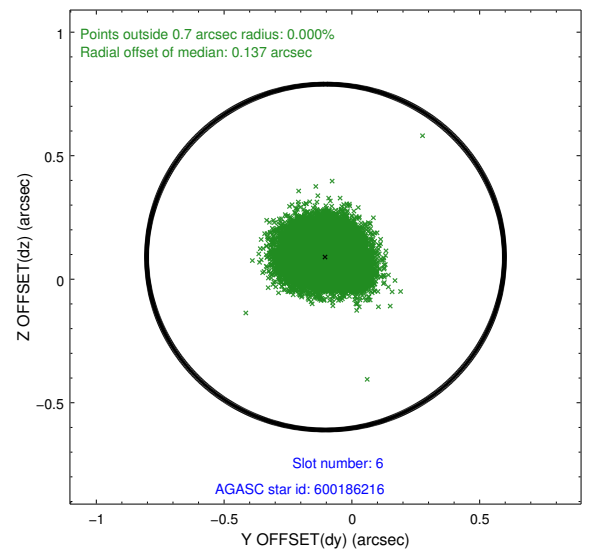
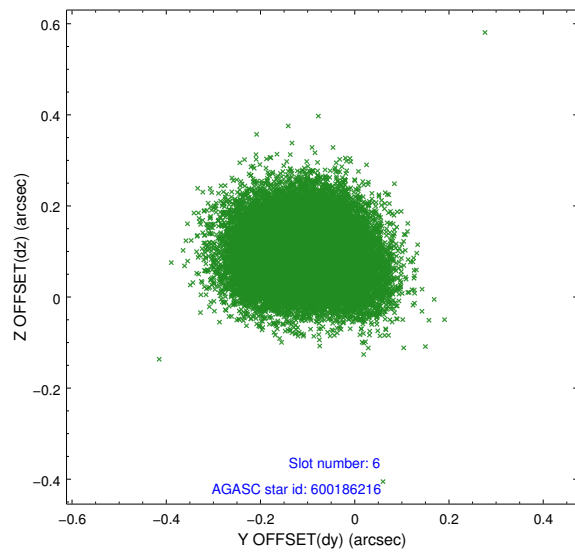
2.4.2 Slot 4



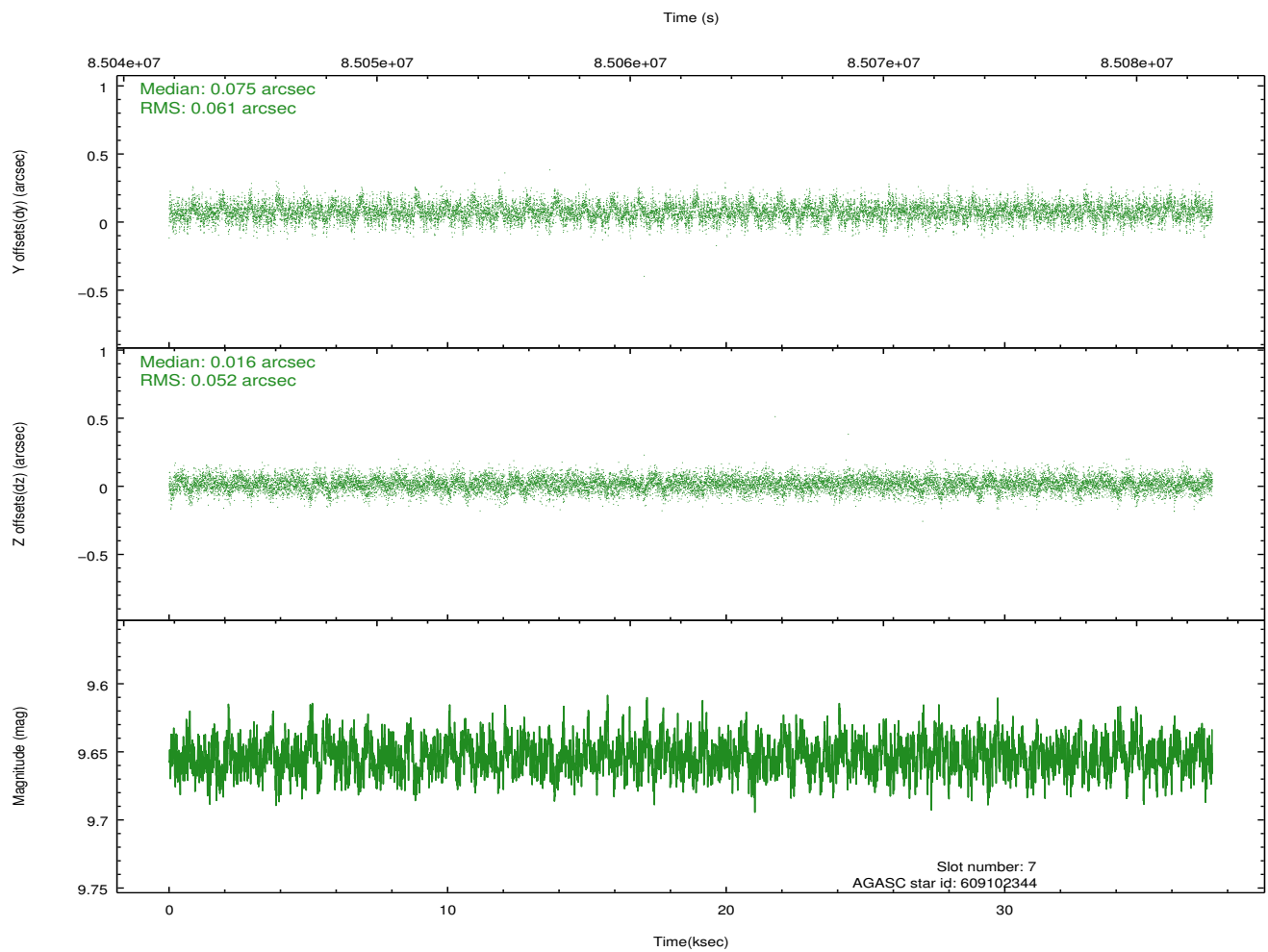
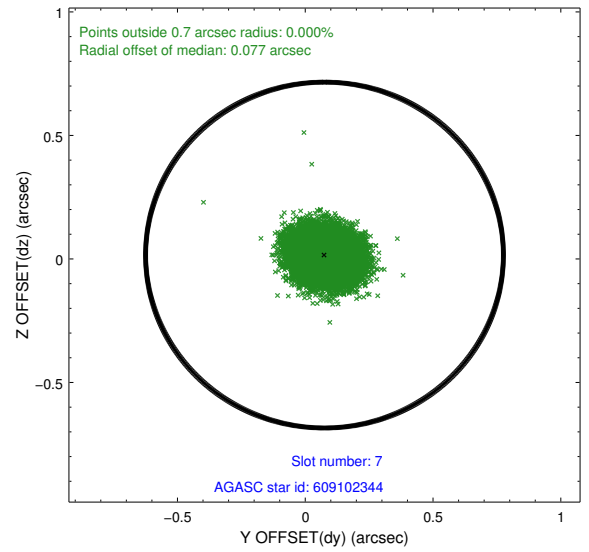
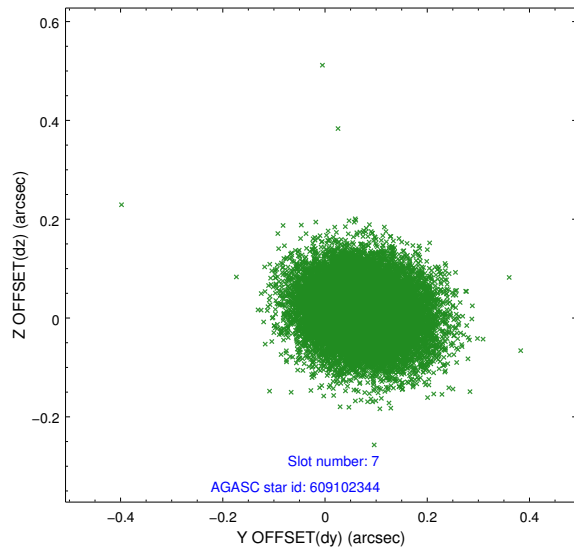
2.4.3 Slot 5



2.4.4 Slot 6

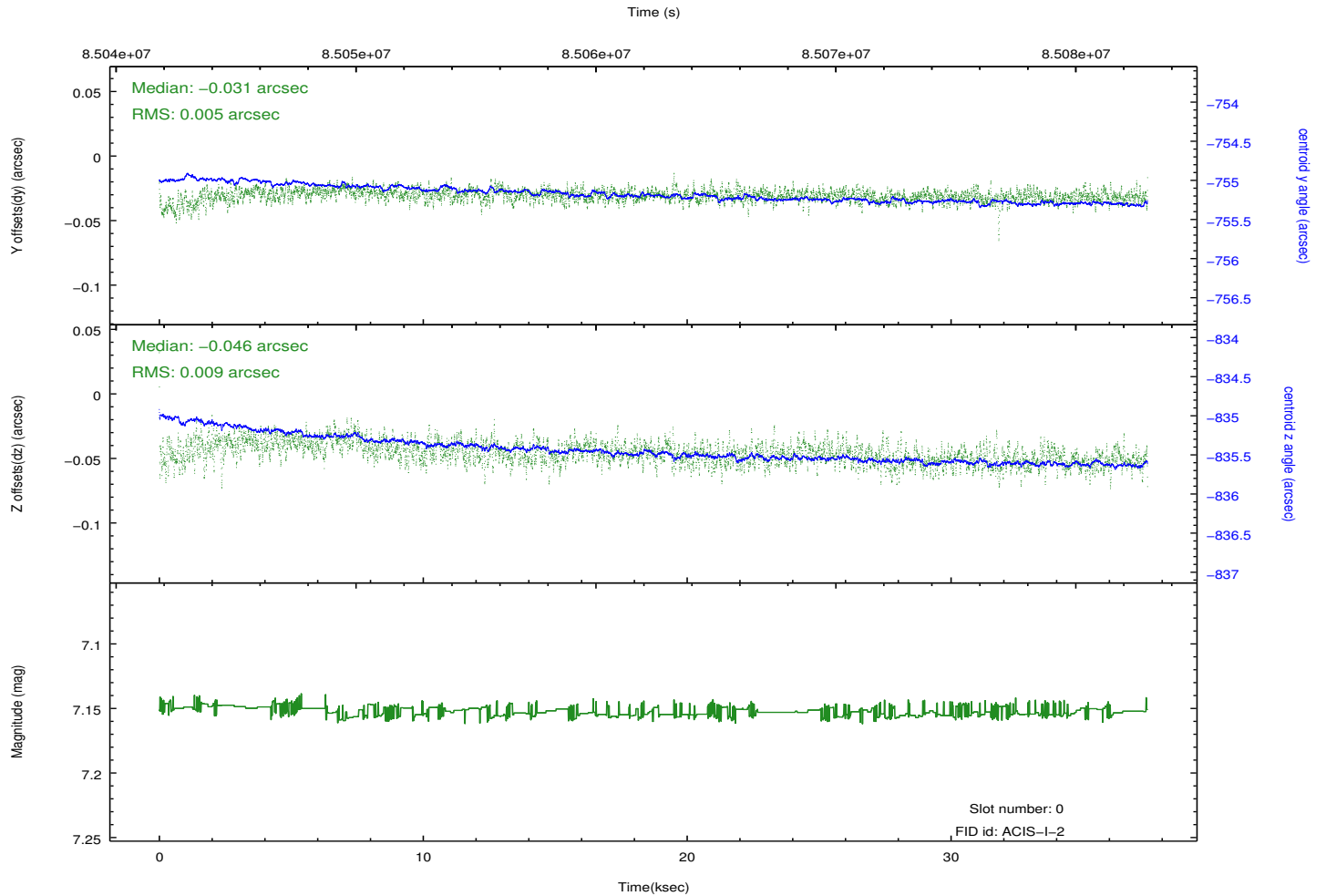
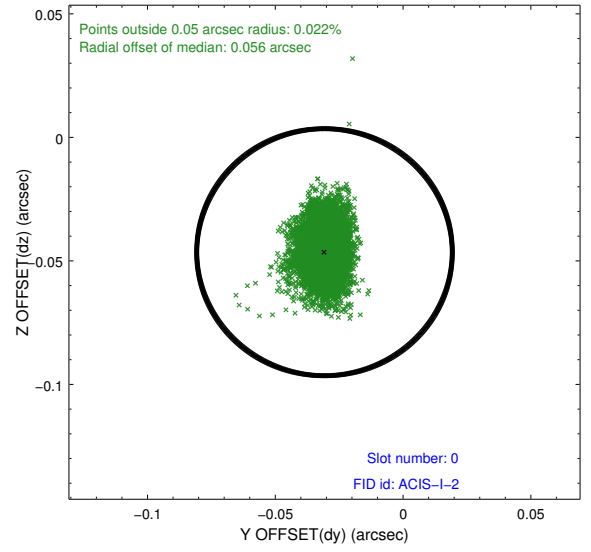
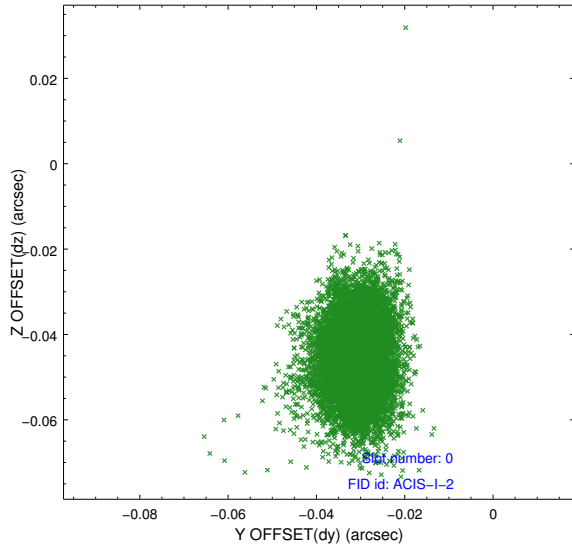


2.4.5 Slot 7

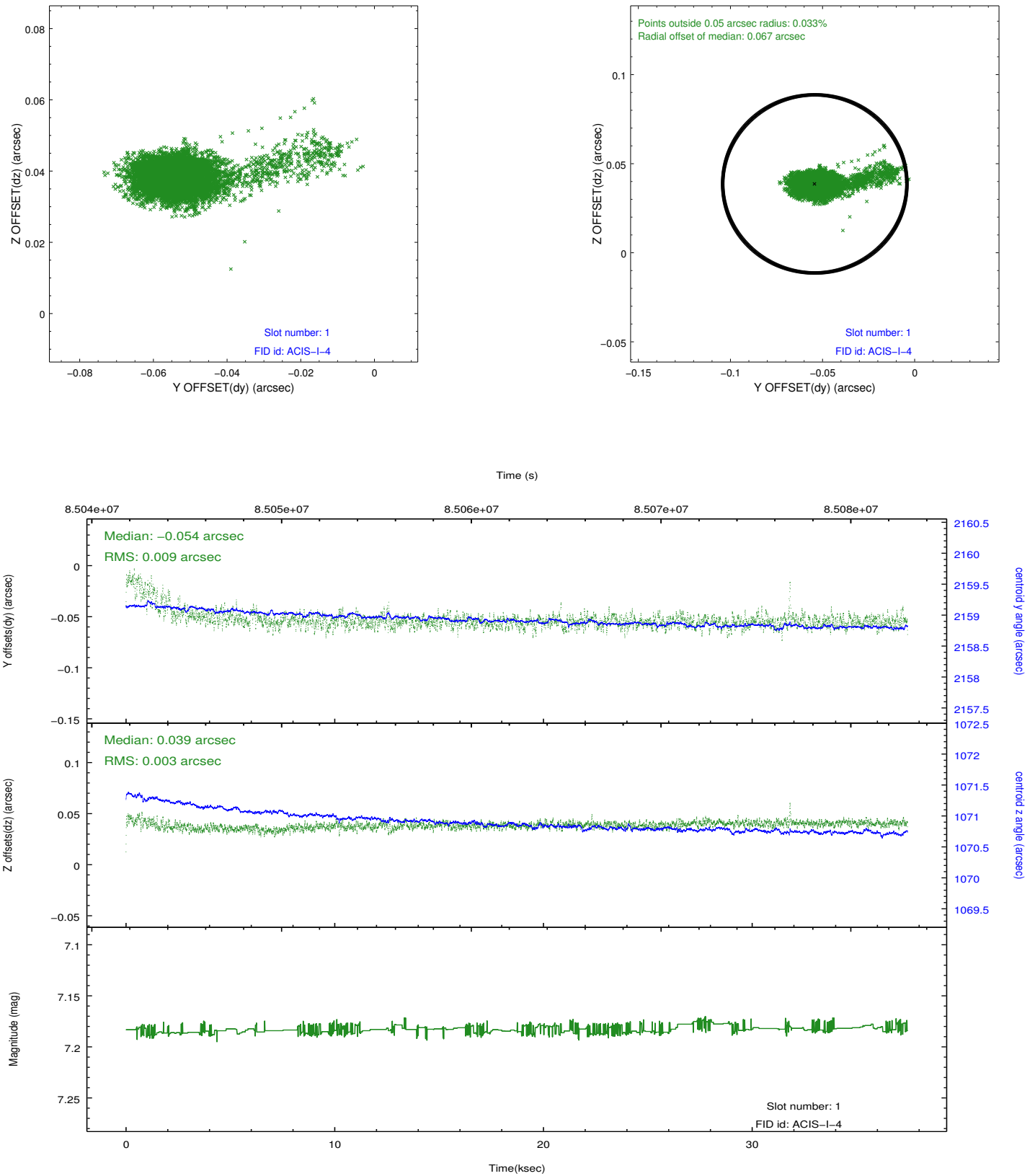


2.5 FID Slots

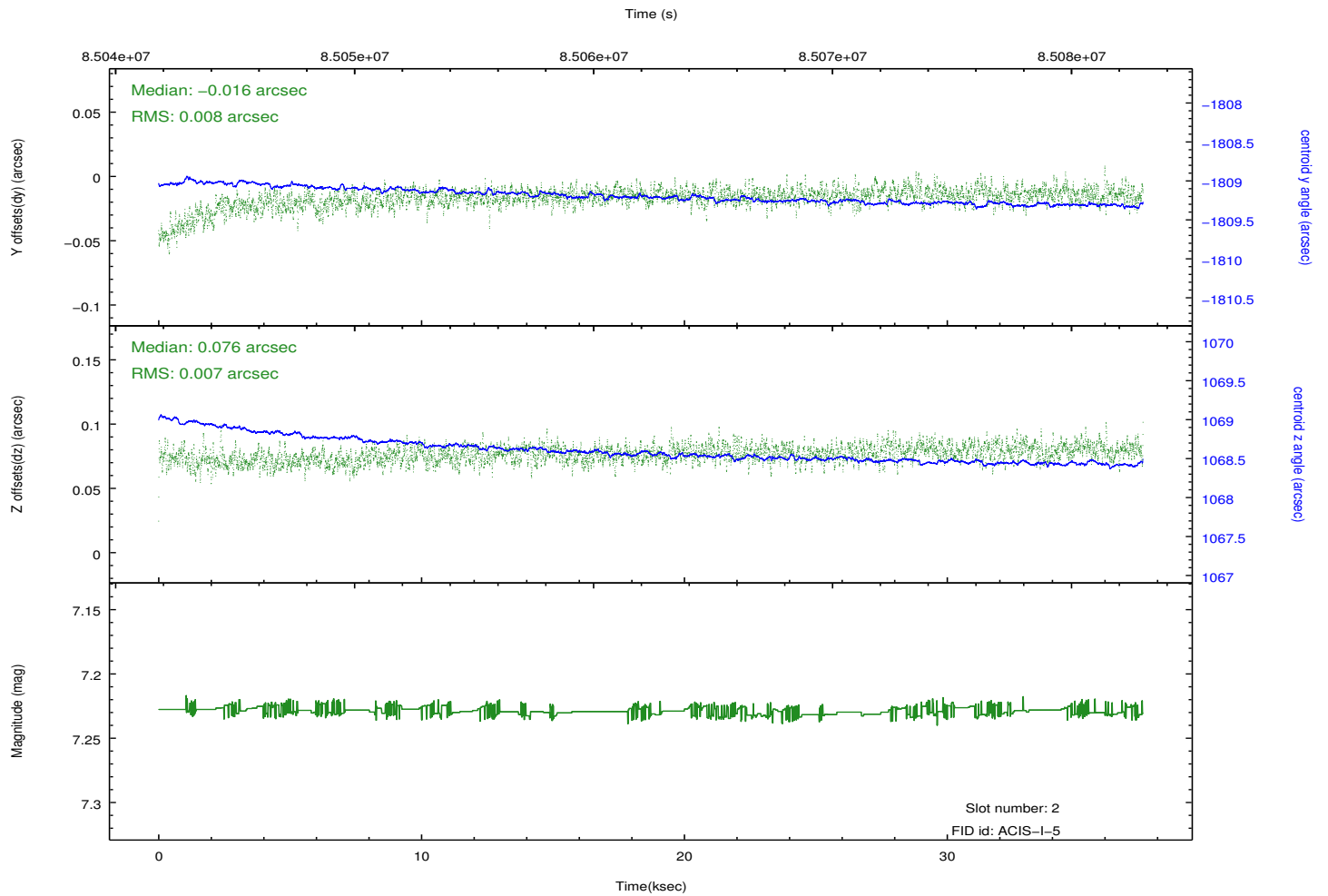
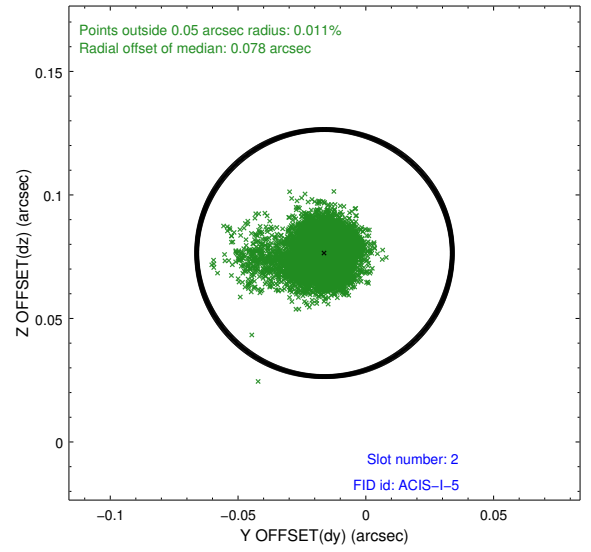
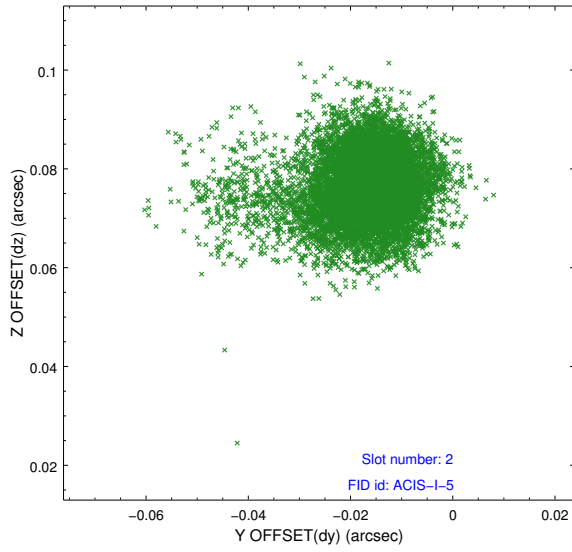
2.5.1 Slot 0



2.5.2 Slot 1



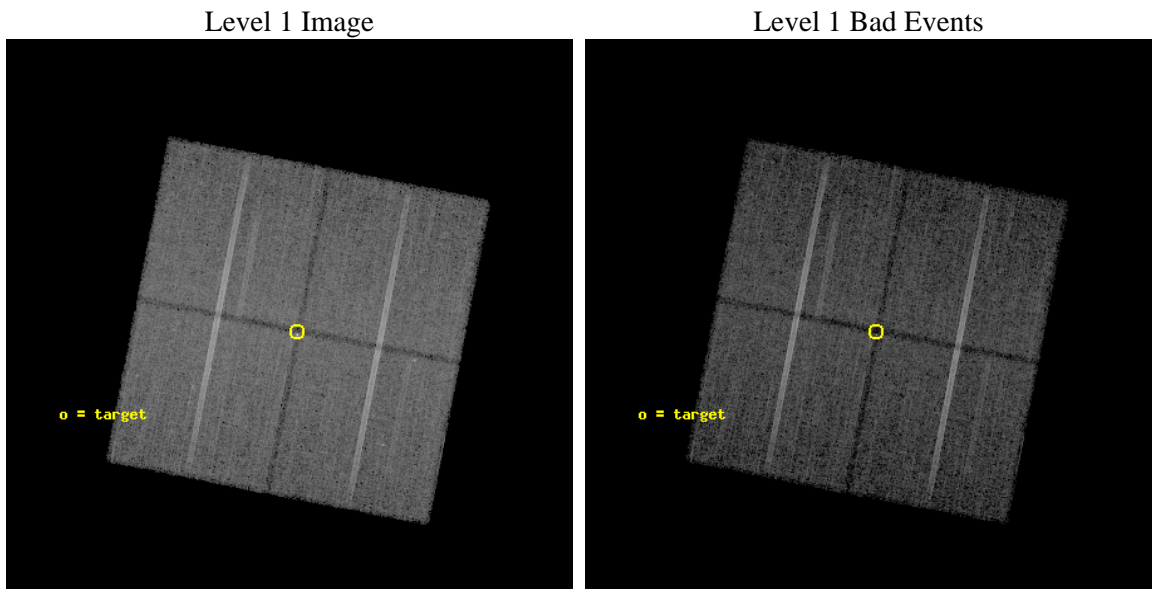
2.5.3 Slot 2



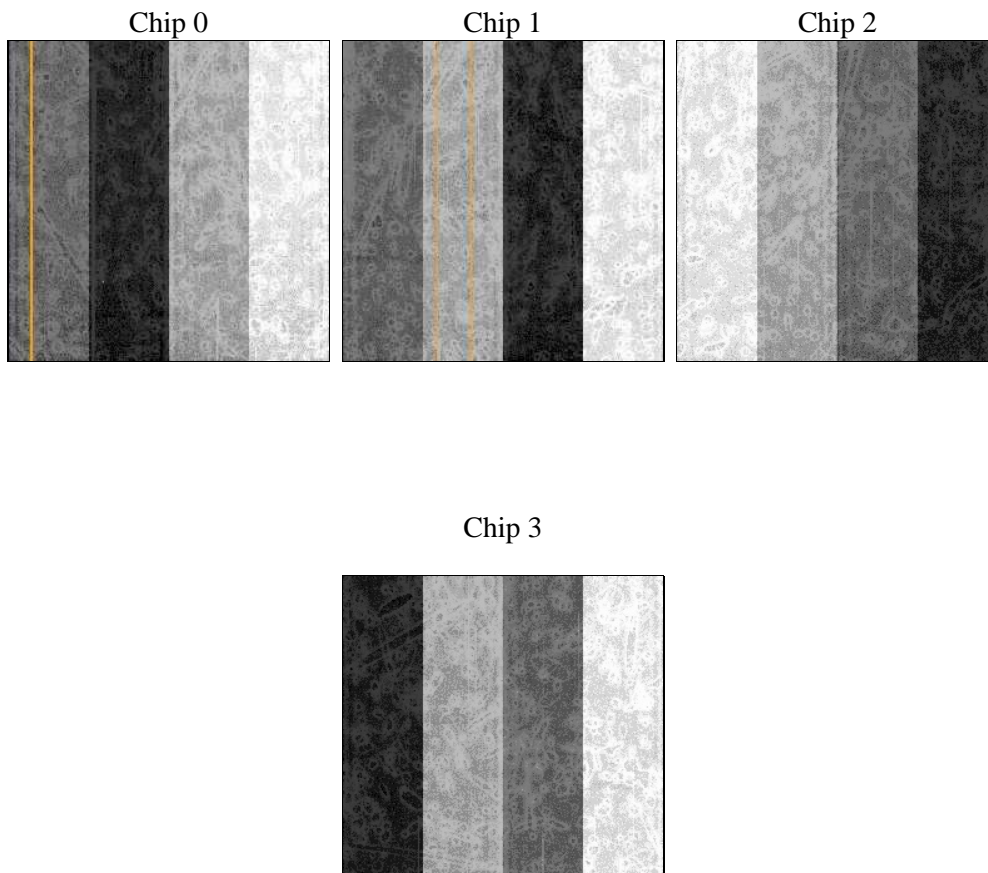
3 OBI Secondary

3.1 OBI

3.1.1 Images



3.1.2 Bias



3.1.3 Parameters

obi_num	0	Obi number	sched_exp_time	37325.000000	[s] Scheduled observation exposure time
ascdsver	8.4.5	Processing system revision	ontime	31063.004349649	Sum of GTIs [s]
caldsver	4.5.1.1	 	ontime0	31059.763319388	Sum of GTIs [s]
date	2012-09-01T16:25:36	Date and time of file creation	ontime1	31063.003522322	Sum of GTIs [s]
revision	4	Processing version of data	ontime2	31056.52207011	Sum of GTIs [s]
			ontime3	31063.004349649	Sum of GTIs [s]
			l1events	728603	Number of level 1 events

3.1.4 Events

	ccd 0	ccd 1	ccd 2	ccd 3
level 1 events	171921	175662	192730	188290
rejected events	148490	152558	169191	167307
rejected %	86%	86%	87%	88%

	ccd 0	ccd 1	ccd 2	ccd 3
grade 0 events	11326	10309	11606	9712
	6%	5%	6%	5%
grade 1 events	141	76	199	109
	0%	0%	0%	0%
grade 2 events	4652	4520	4660	4212
	2%	2%	2%	2%
grade 3 events	2234	2449	2121	2043
	1%	1%	1%	1%
grade 4 events	2130	2374	2089	1996
	1%	1%	1%	1%
grade 5 events	6190	6880	6271	6928
	3%	3%	3%	3%
grade 6 events	3742	4218	3724	3647
	2%	2%	1%	1%
grade 7 events	141506	144836	162060	159643
	82%	82%	84%	84%

A Summary

A.1 Status

V&V Scientist	Beth Sundheim
V&V Date (YYYY-MM-DD)	2012.09.09
V&V Edition	1
V&V Disposition and Status	OK
V&V Charge Time	37.442

A.2 Comments