

V&V Reference Report

L2 ASCDS Version : 8.4.4

Observation 8477 - L2 Version 2
Chandra X-Ray Center

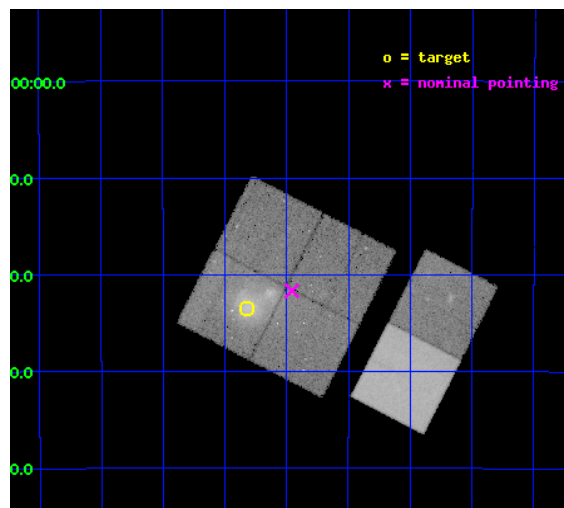
L2 Processing Date : Apr 26 2012

Contents

1	Front	2
2	OBI	3
2.1	OBI	3
2.1.1	Images	3
2.1.2	Bias	3
2.1.3	Parameters	4
2.1.4	Events	4
2.2	Compared Parameters	5
2.3	Aspect	6
2.4	Star Slots	9
2.4.1	Slot 3	9
2.4.2	Slot 4	10
2.4.3	Slot 5	11
2.4.4	Slot 6	12
2.4.5	Slot 7	13
2.5	FID Slots	14
2.5.1	Slot 0	14
2.5.2	Slot 1	15
2.5.3	Slot 2	16
A	Summary	17
A.1	Status	17
A.2	Comments	17

1 Front

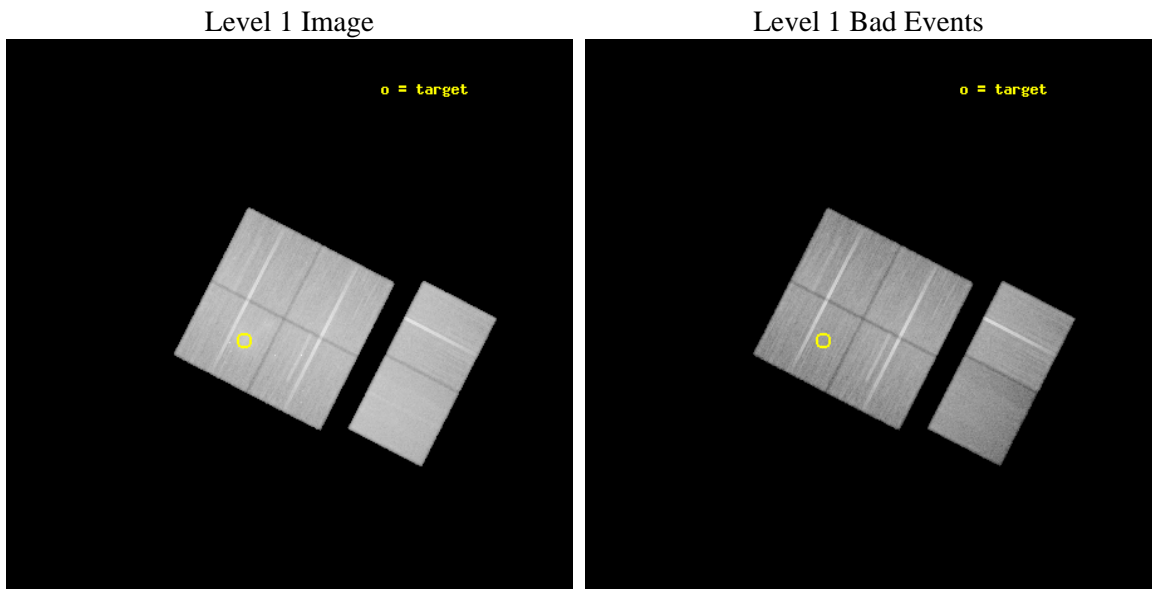
seq_num	800633	Sequence number
obs_id	8477	Observation id
title	The Dynamics of the Unusually Violent Merger in Abell 2744	Proposa
observer	Joshua Kempner	Principal investigator
object	Abell 2744	Source name
dtycycle	0	
cycle	P	events from which exps? Prim/Second/Both
ra_targ	3.580833	Observer's specified target RA [deg]
dec_targ	-30.391528	Observer's specified target Dec [deg]
ra_nom	3.4894056067915	Nominal RA [deg]
dec_nom	-30.361327732089	Nominal Dec [deg]
roll_nom	117.16242693419	Nominal Roll [deg]
revision	2	Processing version of data
ontime	46495.418829679	Sum of GTIs [s]
livetime	45906.665840278	Livetime [s]
ontime0	46482.413888633	Sum of GTIs [s]
ontime1	46495.418829679	Sum of GTIs [s]
ontime2	46492.218899429	Sum of GTIs [s]
ontime3	46495.500909686	Sum of GTIs [s]
ontime6	46492.341979563	Sum of GTIs [s]
ontime7	46495.541949689	Sum of GTIs [s]
l2events	369550	Number of level 2 events



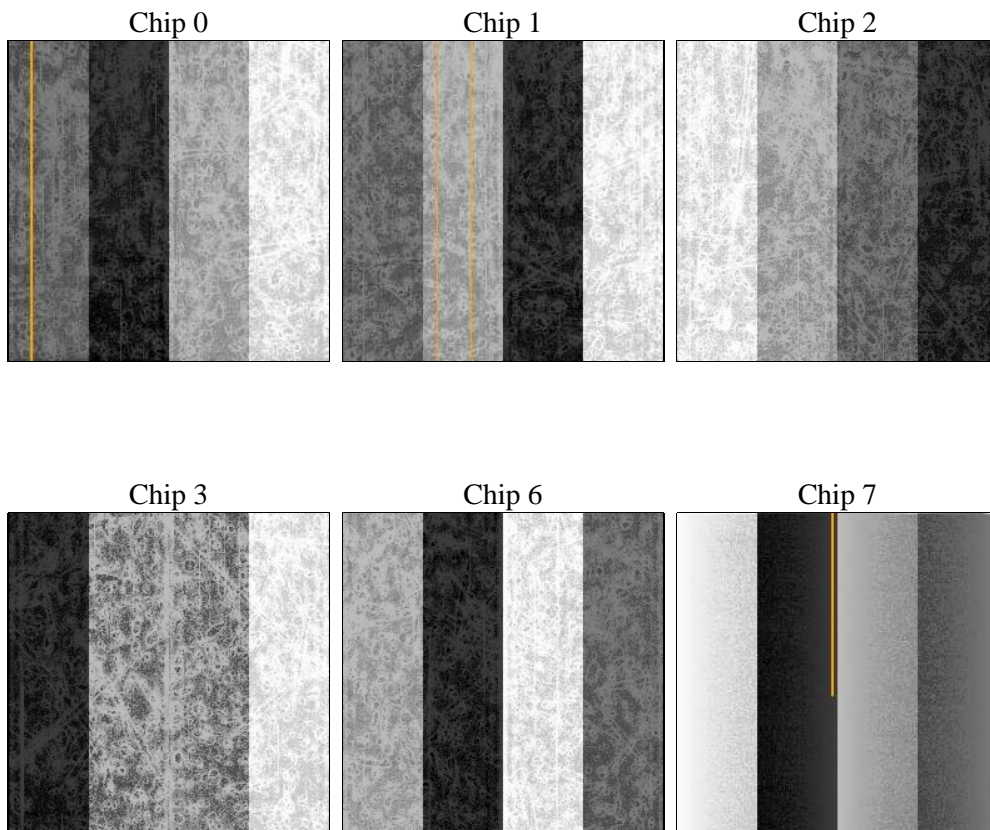
2 OBI

2.1 OBI

2.1.1 Images



2.1.2 Bias



2.1.3 Parameters

obi_num	0	Obi number	sched_exp_time	46452.319000	[s] Scheduled observation exposure time
ascdsver	8.4.4	Processing system revision	ontime	46495.418829679	Sum of GTIs [s]
caldbver	4.4.9	 	ontime0	46482.413888633	Sum of GTIs [s]
date	2012-04-26T13:05:23	Date and time of file creation	ontime1	46495.418829679	Sum of GTIs [s]
revision	2	Processing version of data	ontime2	46492.218899429	Sum of GTIs [s]
			ontime3	46495.500909686	Sum of GTIs [s]
			ontime6	46492.341979563	Sum of GTIs [s]
			ontime7	46495.541949689	Sum of GTIs [s]
			l1events	2278125	Number of level 1 events

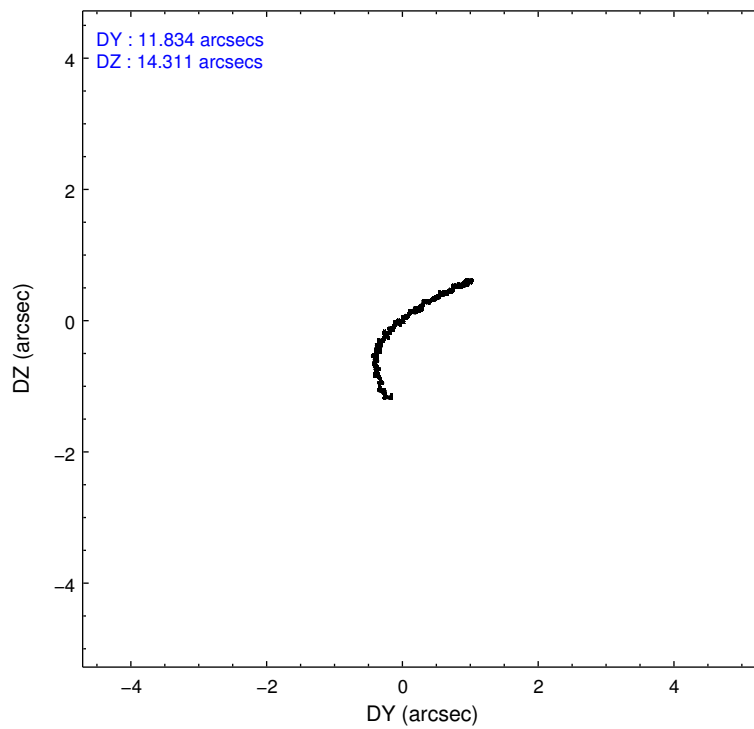
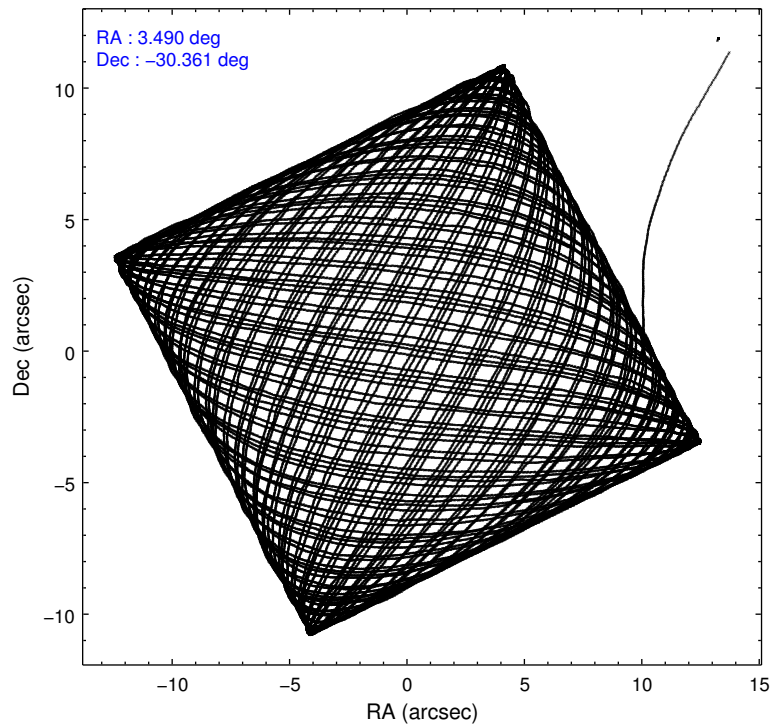
2.1.4 Events

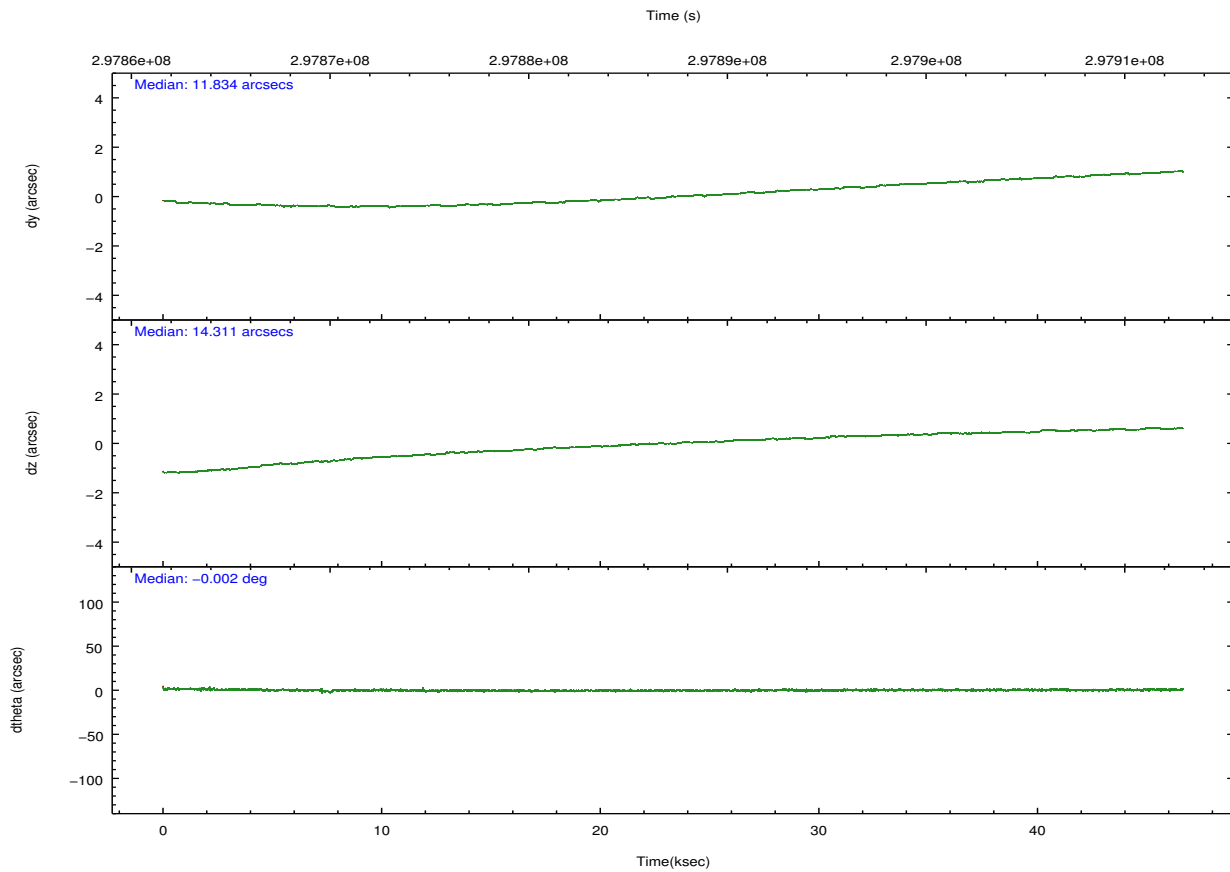
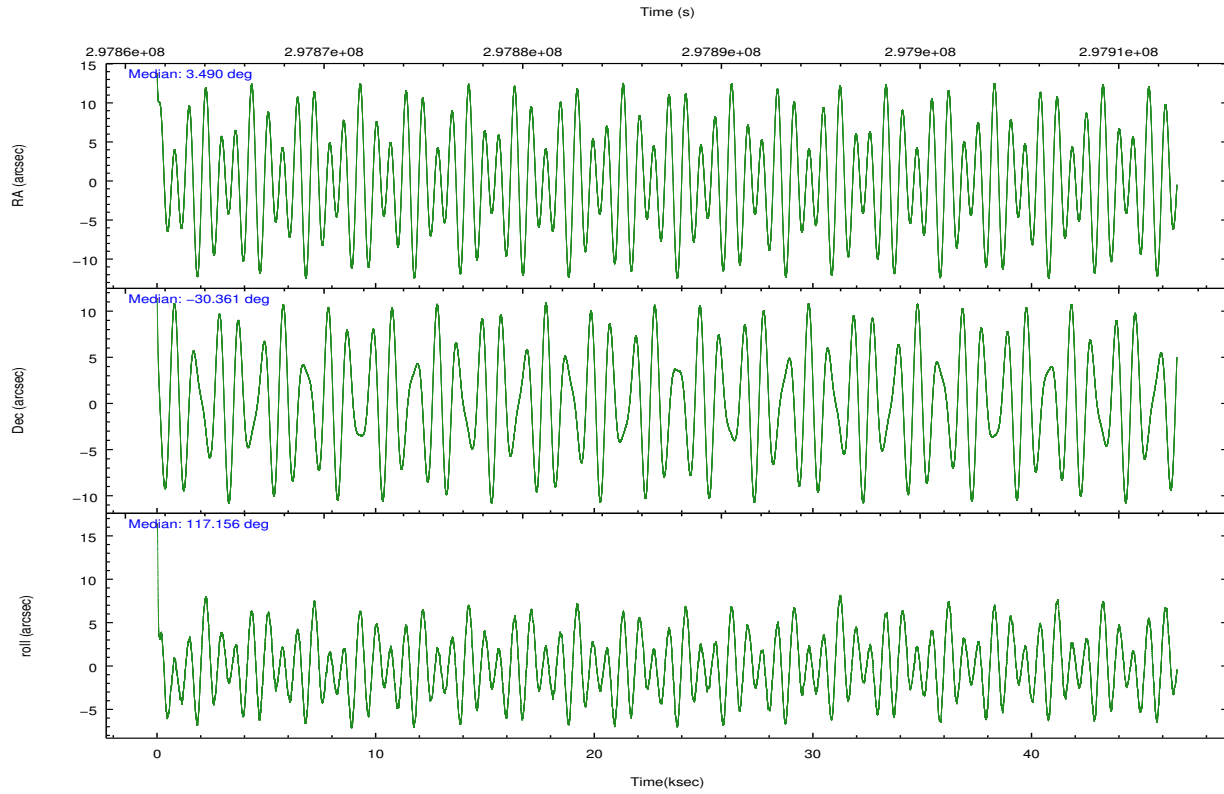
	ccd 0	ccd 1	ccd 2	ccd 3	ccd 6	ccd 7		ccd 0	ccd 1	ccd 2	ccd 3	ccd 6	ccd 7
level 1 events	350873	377462	390333	368907	389913	400637	grade 0 events	13040	42637	13563	14656	13492	17917
rejected events	313944	302159	354400	331443	351375	214999		3%	11%	3%	3%	3%	4%
rejected %	89%	80%	90%	89%	90%	53%	grade 1 events	194	324	226	250	188	528
								0%	0%	0%	0%	0%	0%
							grade 2 events	8946	12775	8450	7760	8650	37719
								2%	3%	2%	2%	2%	9%
							grade 3 events	4149	5456	3632	4016	4190	17303
								1%	1%	0%	1%	1%	4%
							grade 4 events	3970	5345	3893	4014	4045	17103
								1%	1%	0%	1%	1%	4%
							grade 5 events	11983	13622	11423	14479	14697	42318
								3%	3%	2%	3%	3%	10%
							grade 6 events	6829	9098	6398	7022	8163	95601
								1%	2%	1%	1%	2%	23%
							grade 7 events	301762	288205	342748	316710	336488	172148
								86%	76%	87%	85%	86%	42%

2.2 Compared Parameters

Parameter	Planned	Actual	Parameter	Planned	Actual
Instrument	ACIS	ACIS	Obspar format version number	7	7
Detector	ACIS-012367	ACIS-012367	Obspar file type	PREDICTED	ACTUAL
Grating	NONE	NONE	Obspar update status	NONE	UPDATED
Data mode	VFAINT	VFAINT	CCD I0 on	Y	Y
Observation mode	POINTING	POINTING	CCD I1 on	Y	Y
[deg] Pointing RA	3.516251	3.489405606791479	CCD I2 on	Y	Y
[deg] Pointing Dec	-30.376137	-30.36132773208889	CCD I3 on	Y	Y
[deg] Pointing Roll	116.967312	117.1624269341942	CCD S0 on	N	N
[mm] SIM focus pos	-0.782348	-0.7809083437167272	CCD S1 on	N	N
[mm] SIM defocus	0	0.001439871863259334	CCD S2 on	Y	Y
[mm] SIM translation stage pos	-233.592463	-233.5874344608287	CCD S3 on	O1	Y
[mm] SIM translation stage offset	0	-0.005018542100998502	CCD S4 on	N	N
[s] Observation start time (MET)	297864135.184000	297863119.46504	CCD S5 on	N	N
Observation start date	2007-06-10T12:01:10	2007-06-10T11:45:19	Number of optional ACIS chips dropped	0	0
[s] Observation end time (MET)	297910587.184000	297910825.01732	On-chip summing requested	N	N
Observation end date	2007-06-11T00:55:22	2007-06-11T01:00:25	Subarray requested	NONE	NONE
Read mode	TIMED	TIMED	Alternating exposures requested	N	N
			[s] Primary exposure time	0.000000	3.2

2.3 Aspect



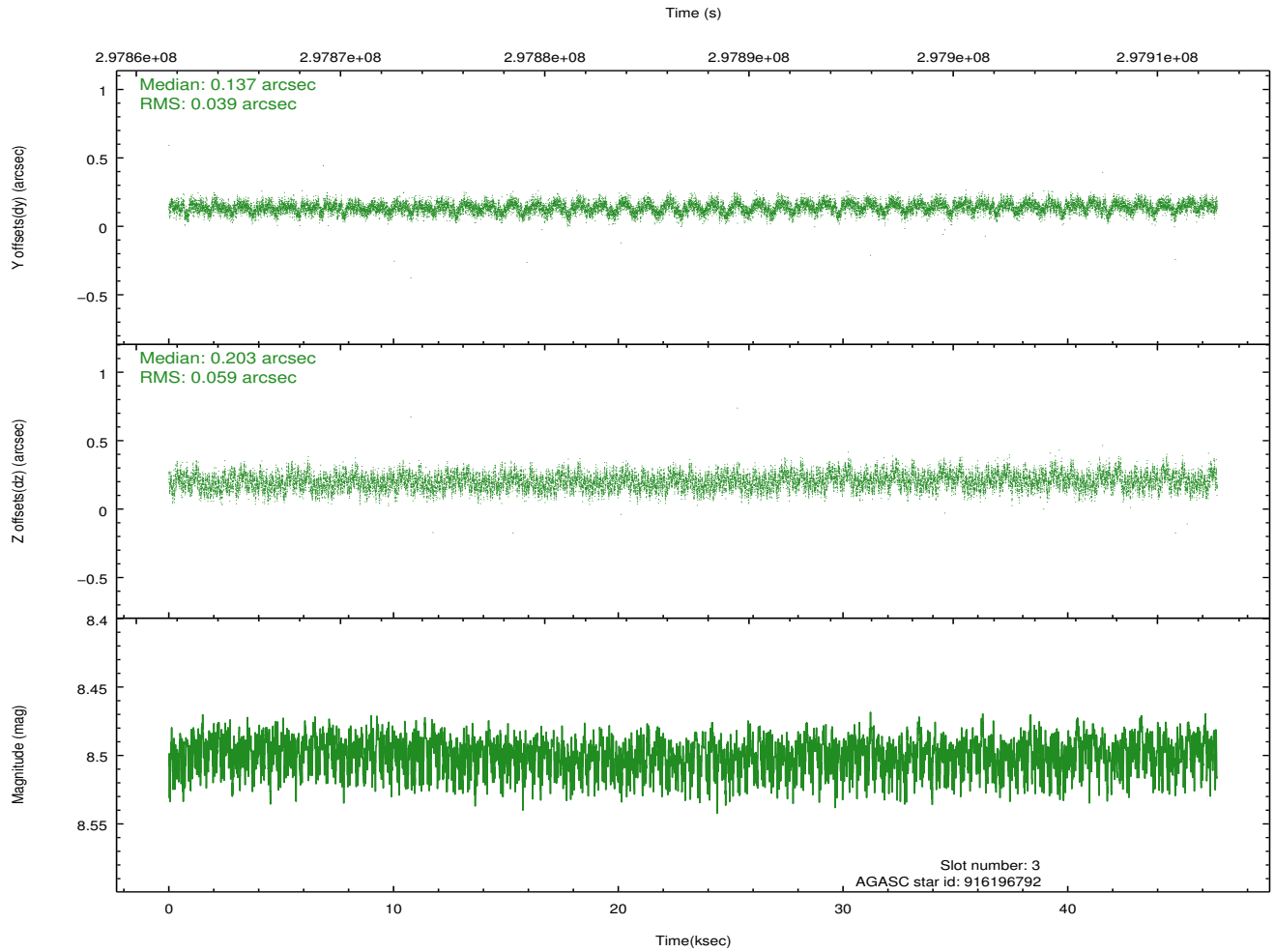
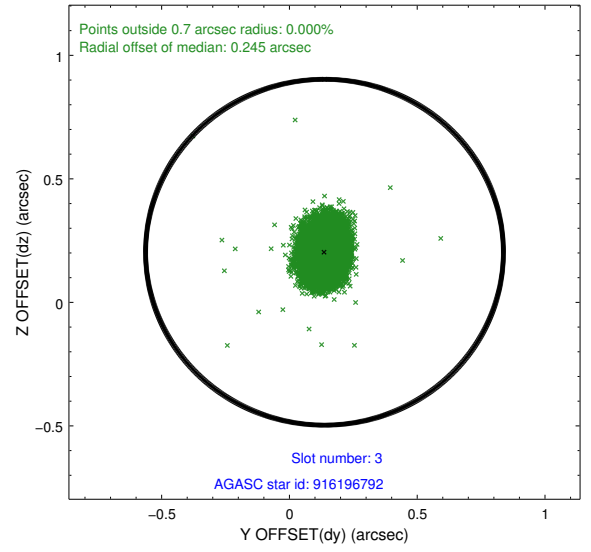
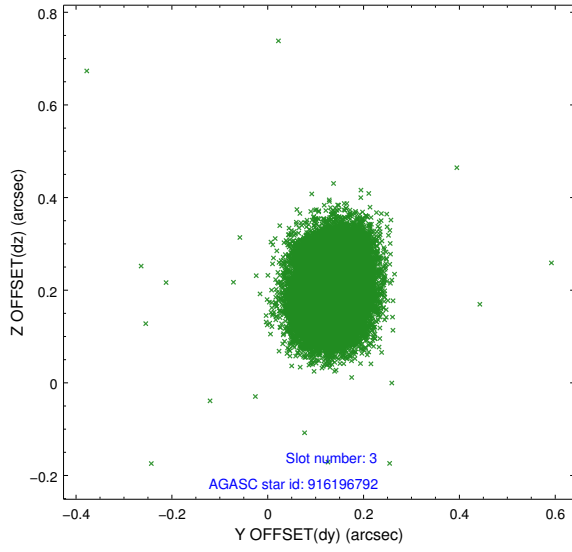


Slot Statistics

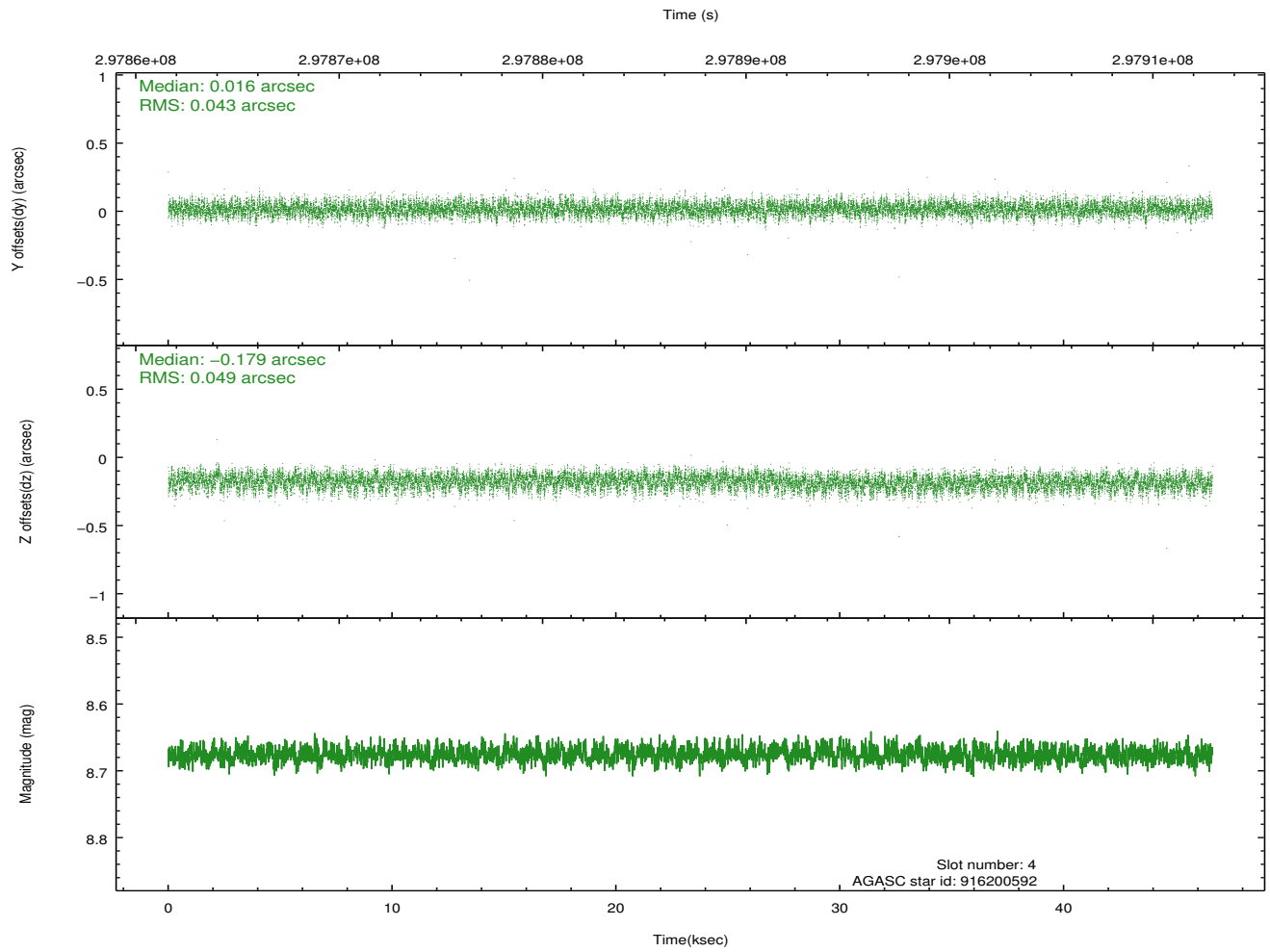
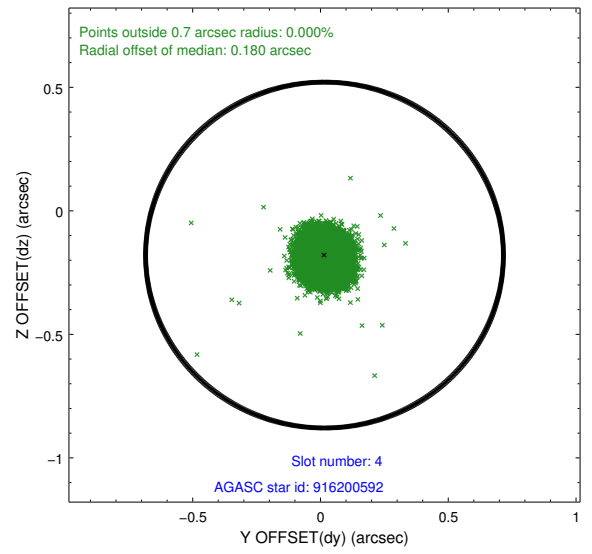
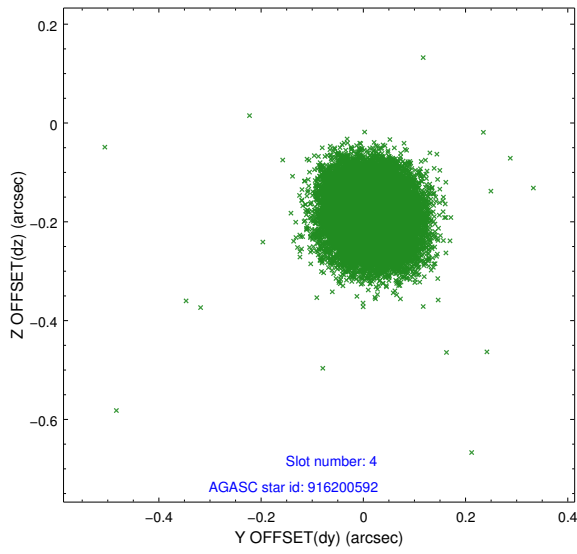
slot	status	id	mag	n_pts	med_dy	med_dz	dr1	dr2	ra	dec	mean_y	mean_z
0	FID	ACIS-I-1	7.23	11377	-0.012	0.019	0.012	0.020	0.000000	0.000000	927.58	-837.79
1	FID	ACIS-I-4	7.16	11374	0.171	0.016	0.012	0.024	0.000000	0.000000	2147.81	1062.01
2	FID	ACIS-I-5	7.22	11377	-0.258	0.035	0.011	0.022	0.000000	0.000000	-1820.67	1059.89
3	GUIDE	916196792	8.50	22742	0.137	0.203	0.075	0.122	4.170313	-30.434617	-1113.20	-1710.98
4	GUIDE	916200592	8.68	22737	0.016	-0.179	0.070	0.111	3.136714	-30.859834	-1023.36	1836.72
5	GUIDE	916201280	8.66	22735	-0.071	0.154	0.068	0.107	3.857877	-30.169158	180.54	-1284.44
6	GUIDE	916201520	8.09	22743	-0.216	-0.126	0.062	0.097	3.245363	-30.057887	1402.95	233.30
7	GUIDE	916198592	9.59	22733	0.135	-0.051	0.095	0.157	3.648256	-31.023327	-2261.43	694.00

2.4 Star Slots

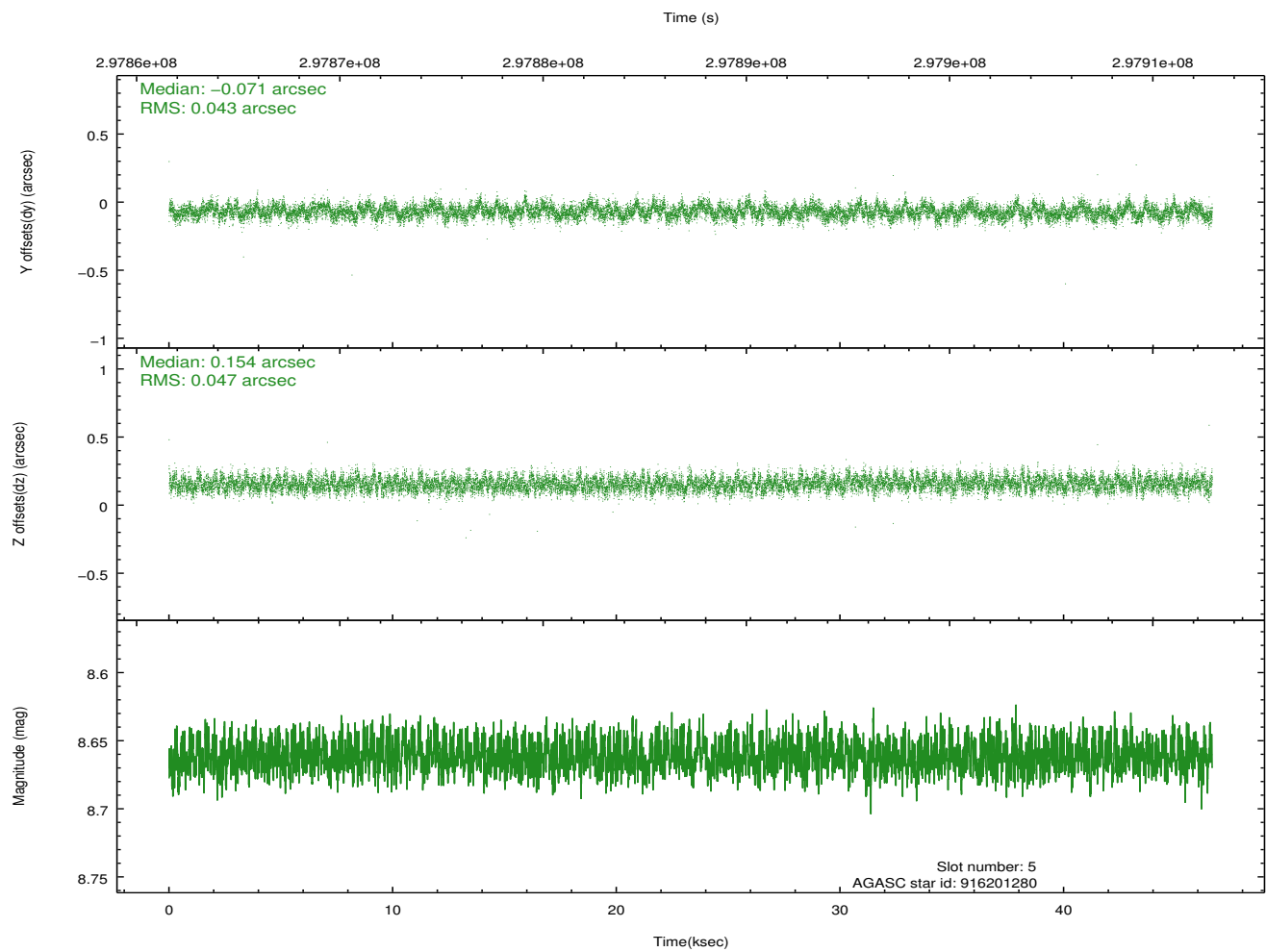
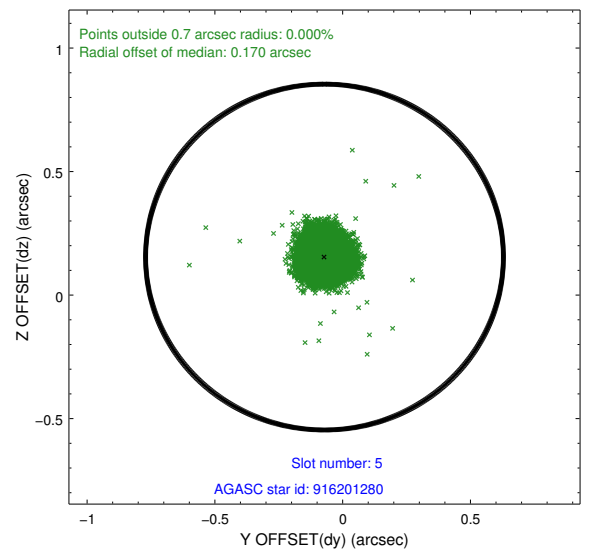
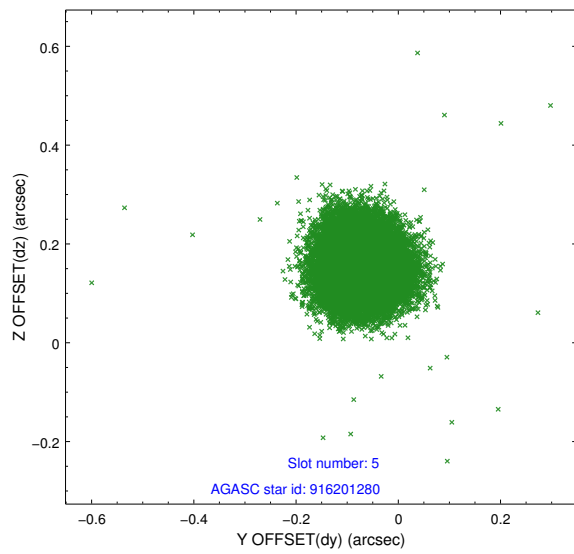
2.4.1 Slot 3



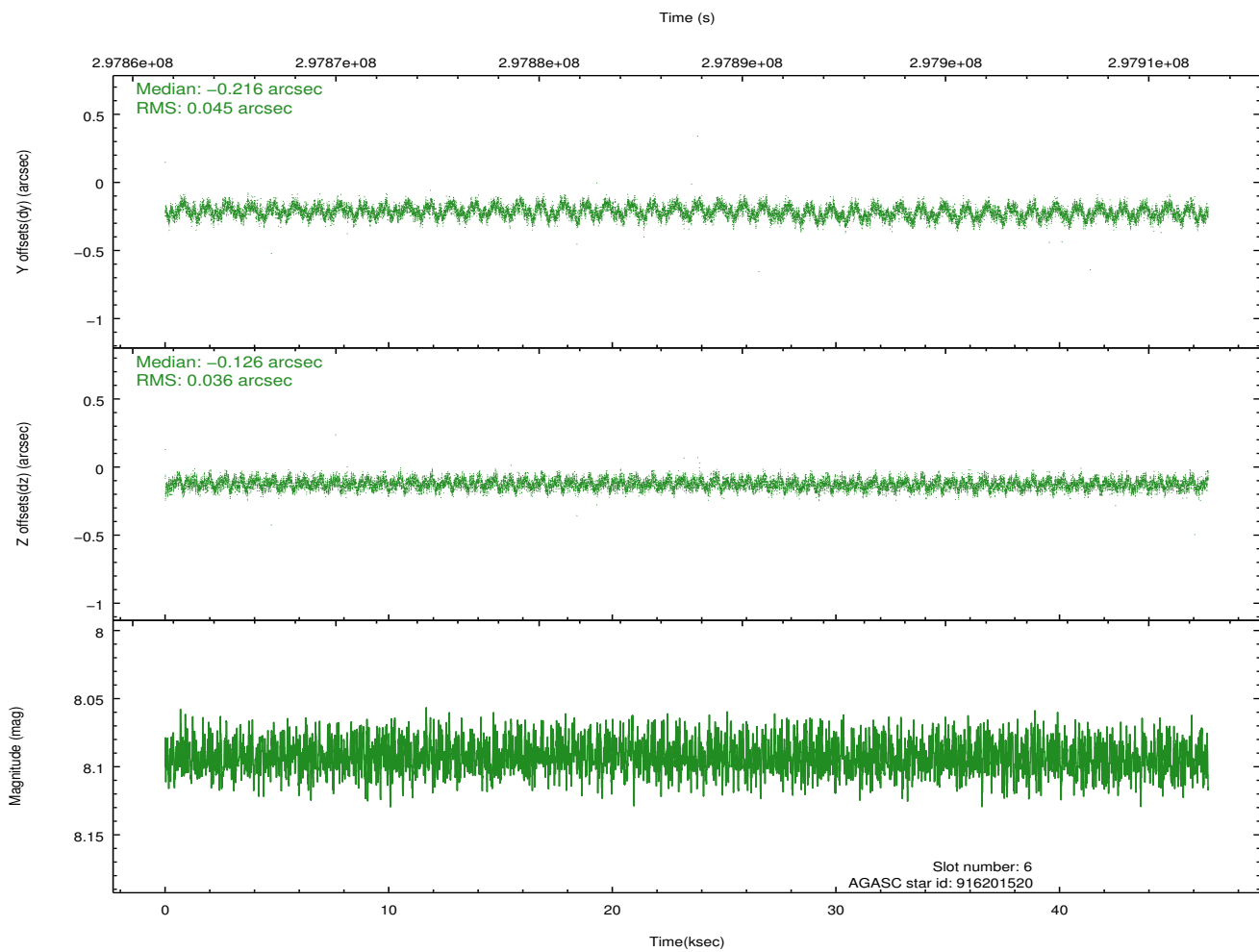
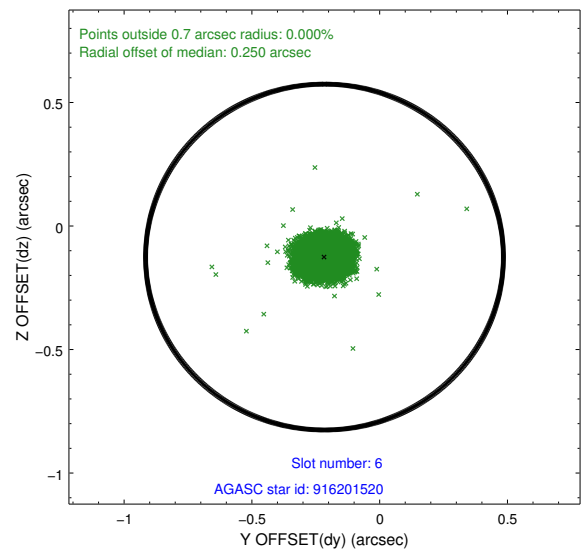
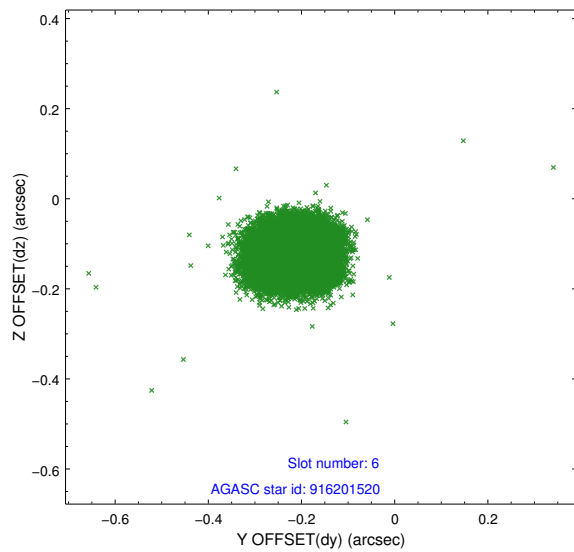
2.4.2 Slot 4



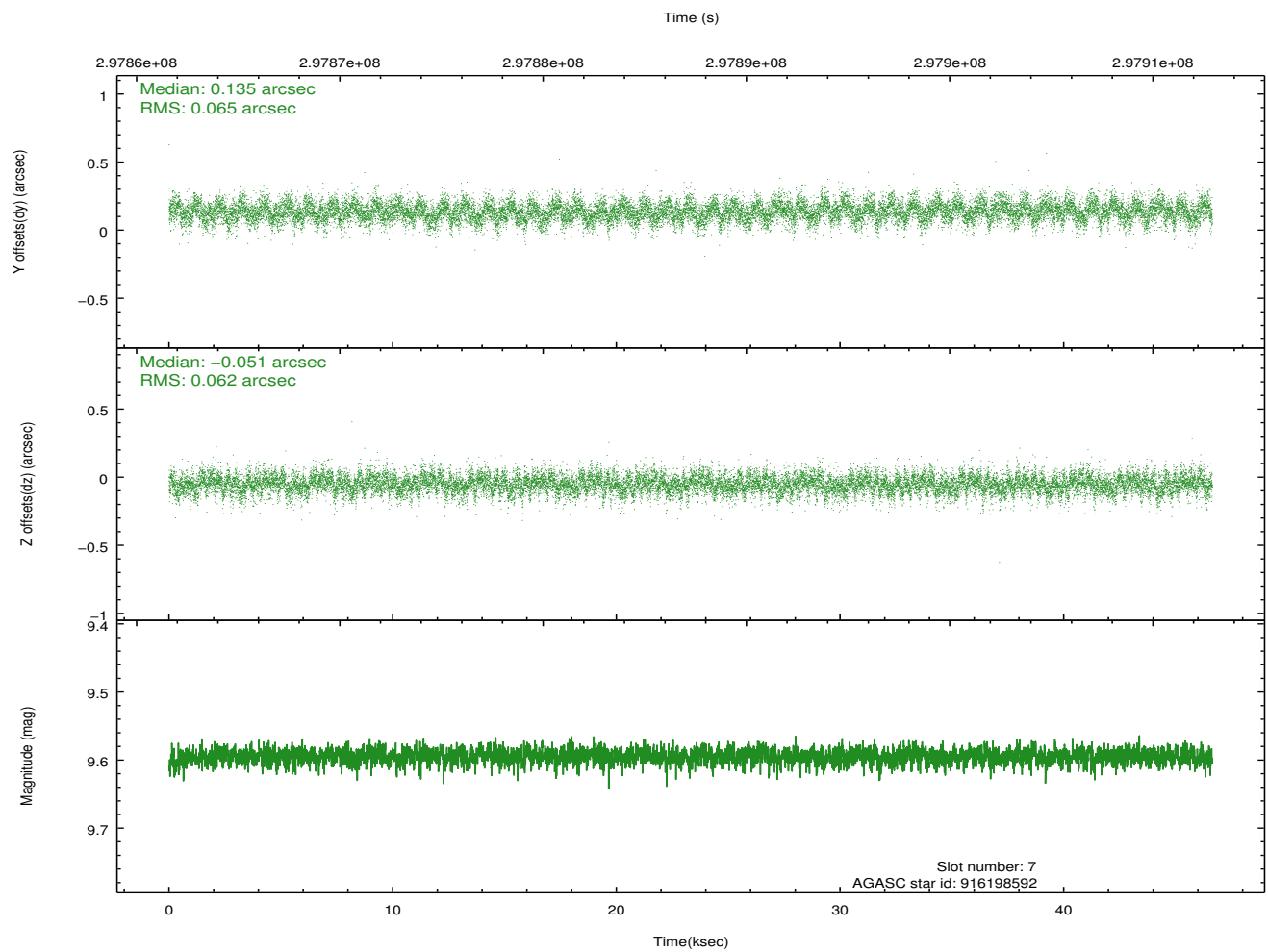
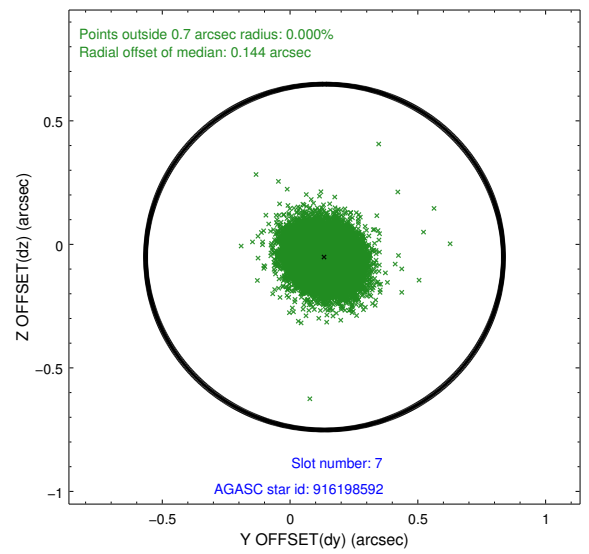
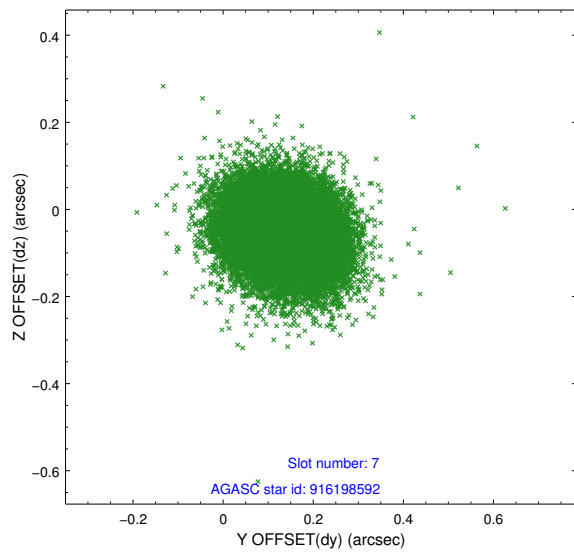
2.4.3 Slot 5



2.4.4 Slot 6

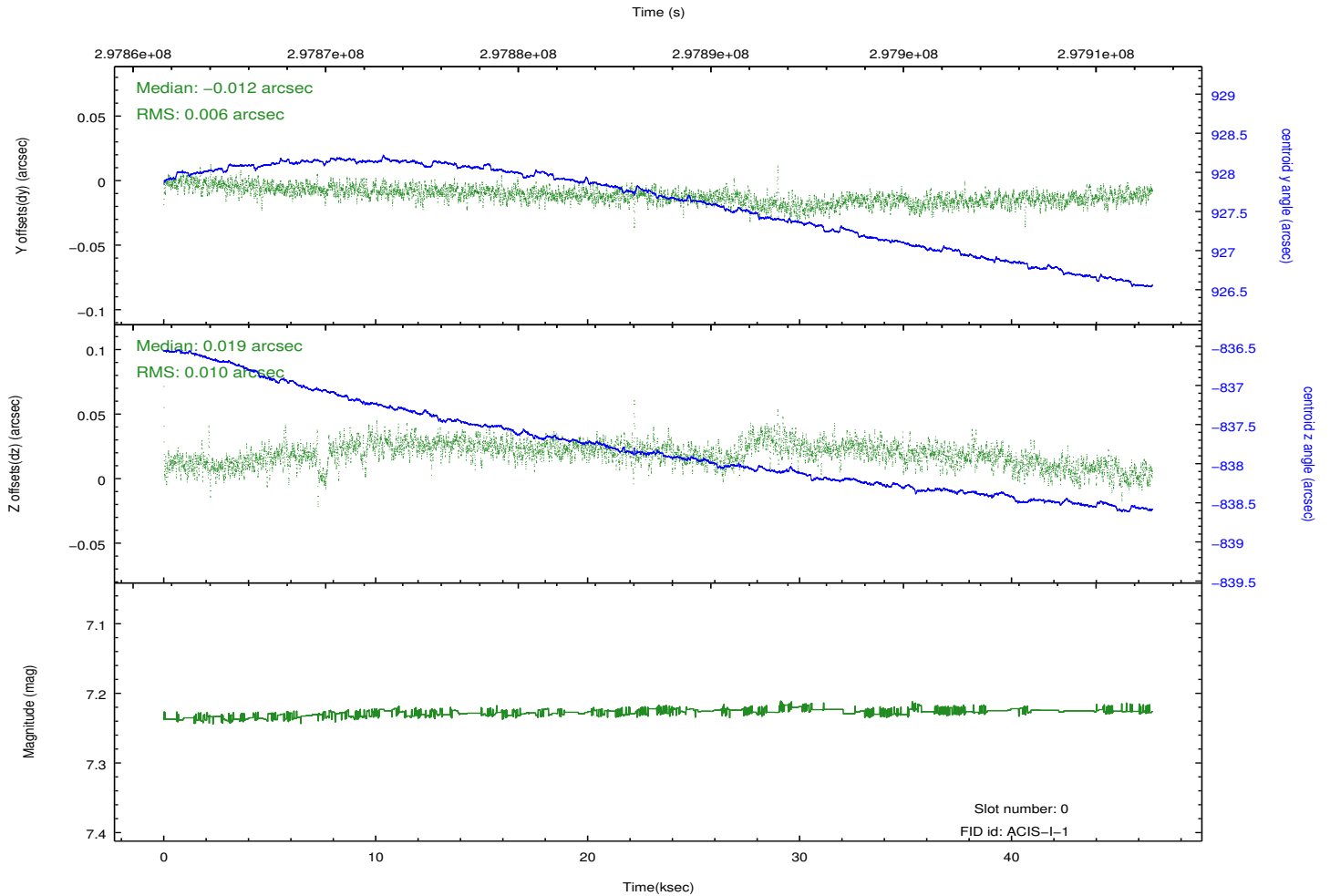
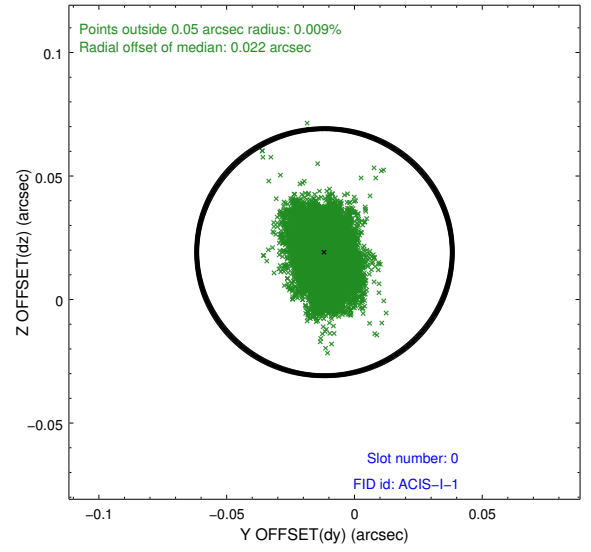
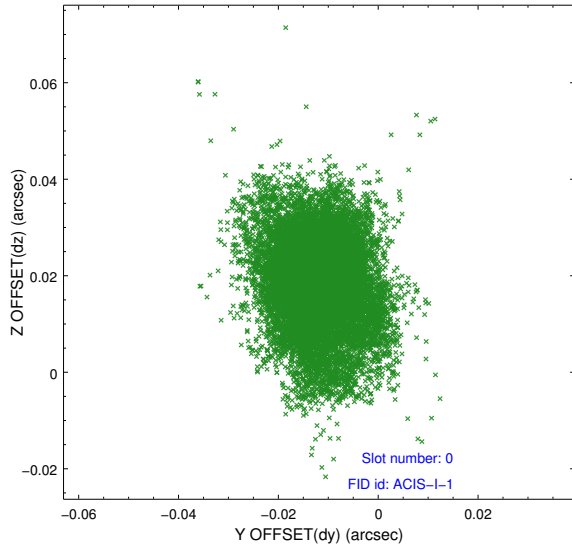


2.4.5 Slot 7

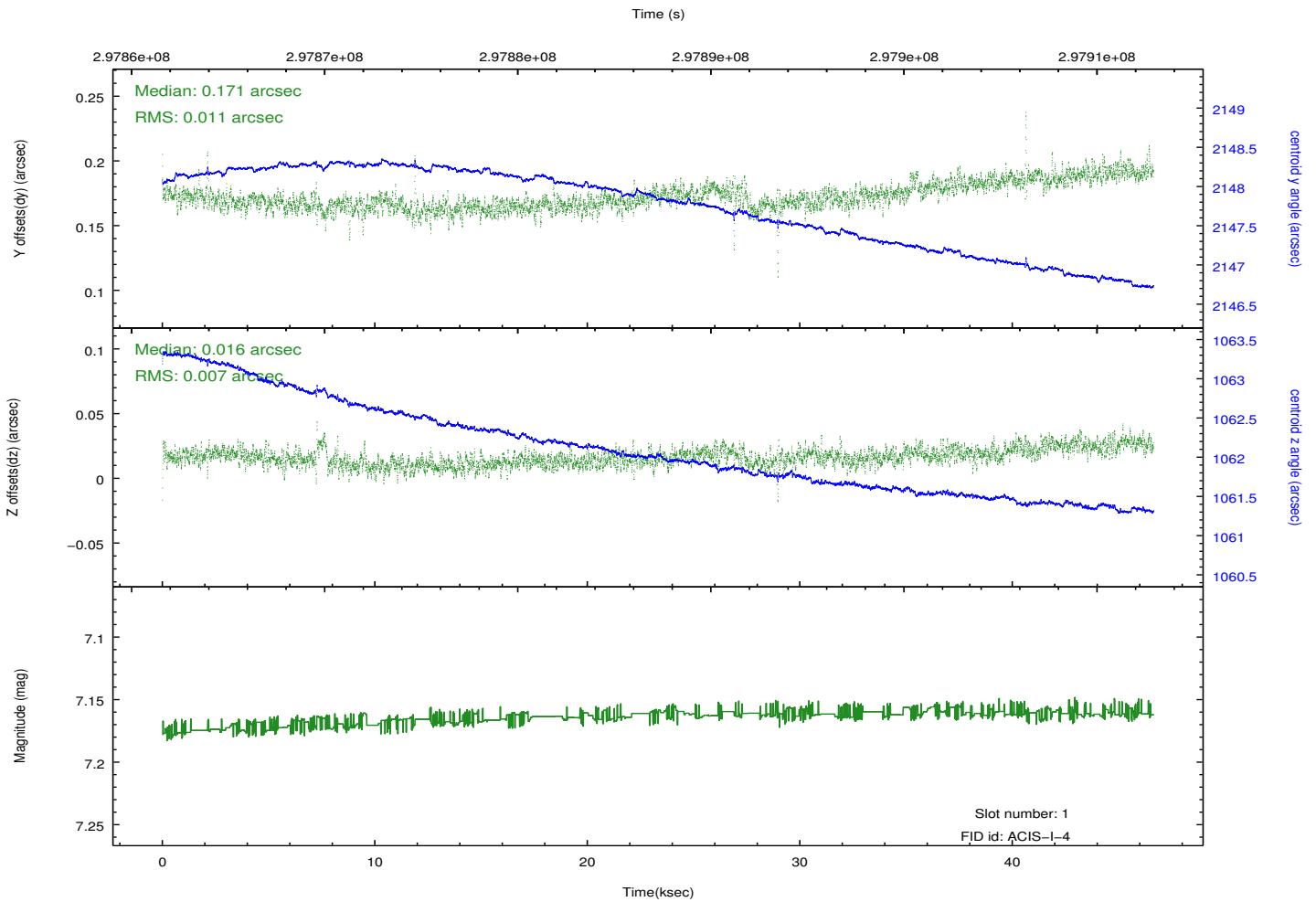
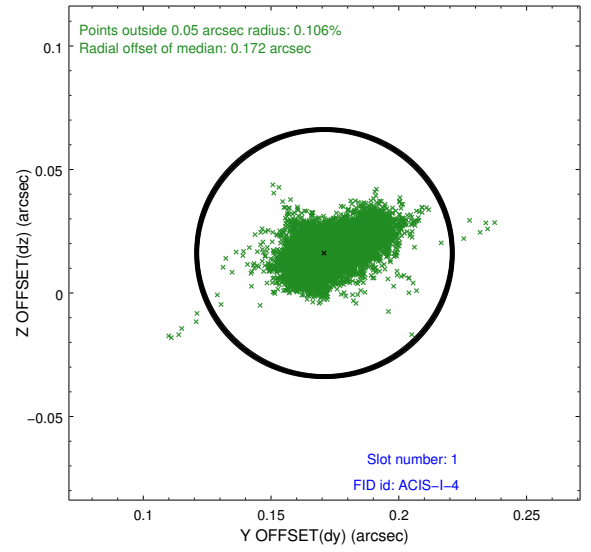
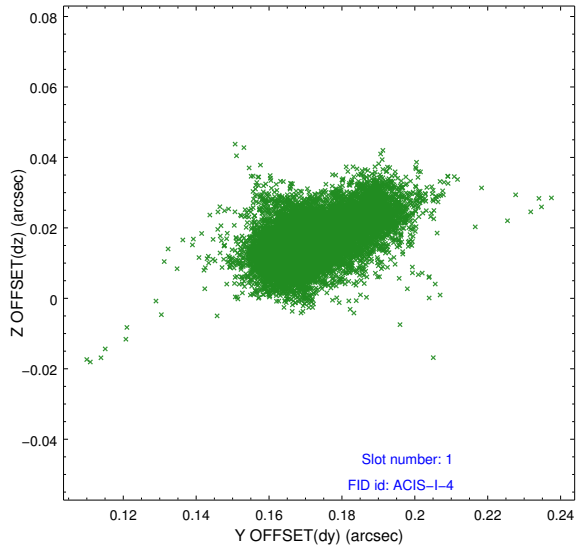


2.5 FID Slots

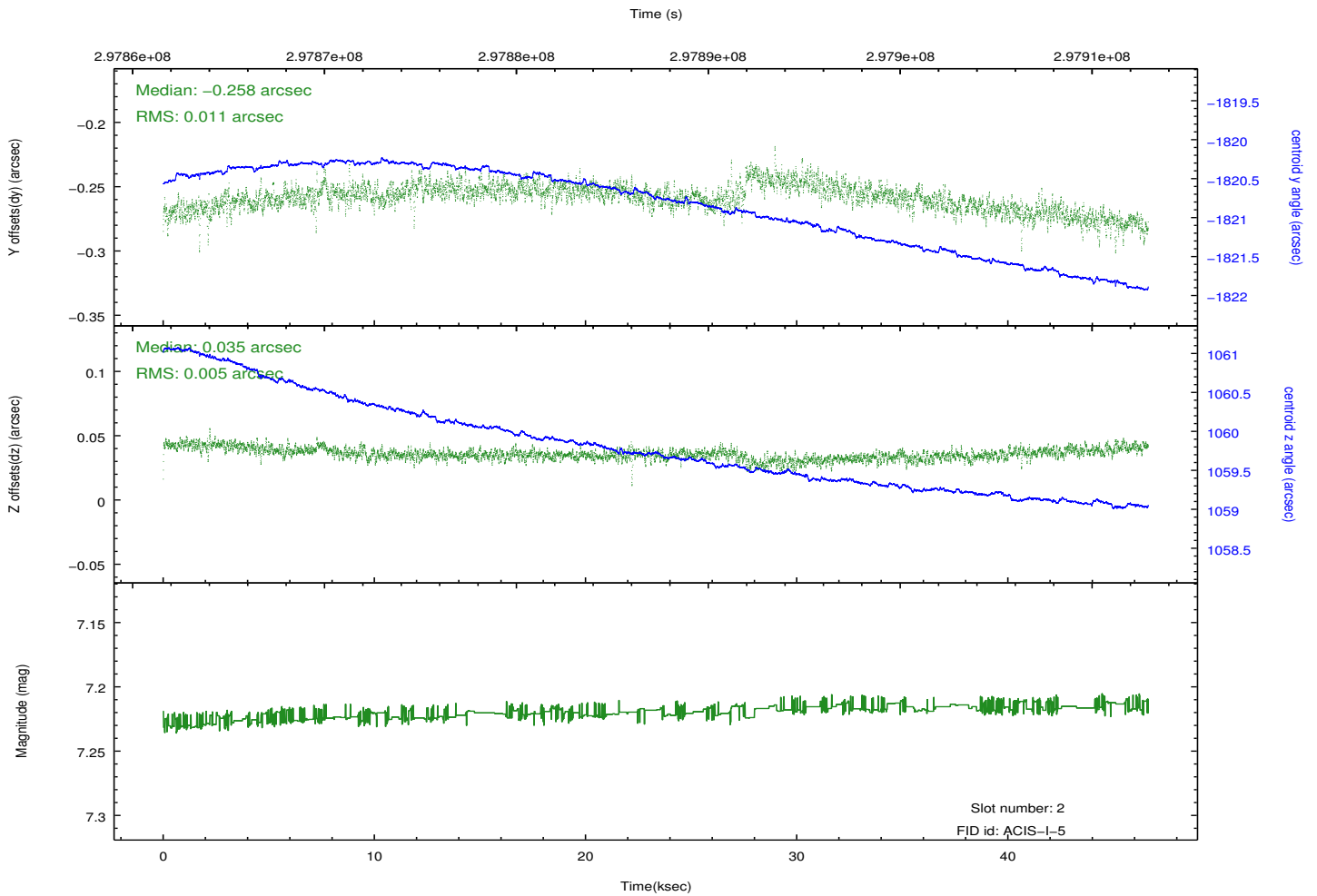
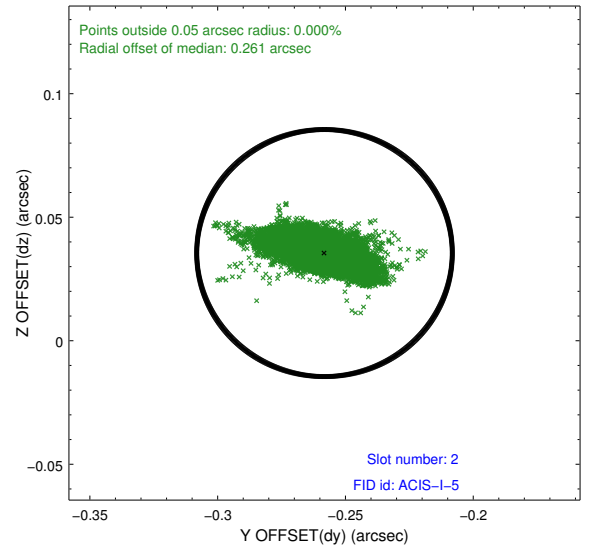
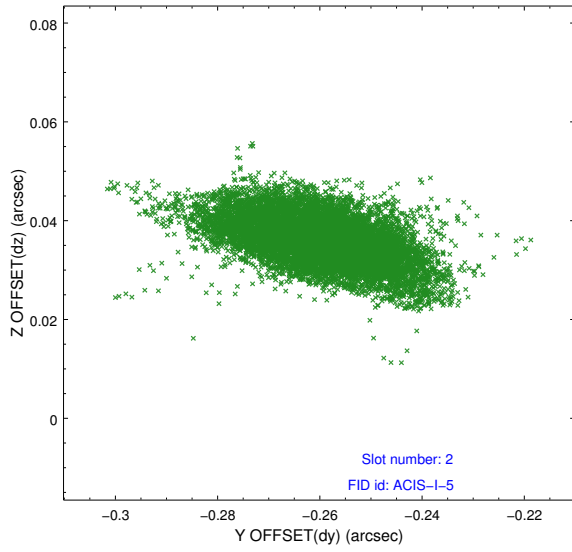
2.5.1 Slot 0



2.5.2 Slot 1



2.5.3 Slot 2



A Summary

A.1 Status

V&V Scientist	Jen Lauer
V&V Date (YYYY-MM-DD)	2012.04.27
V&V Edition	1
V&V Disposition and Status	OK
V&V Charge Time	46.4959998

A.2 Comments