

V&V Reference Report

L2 ASCDS Version : 8.4.3.1

Observation 8497 - L2 Version 3
Chandra X-Ray Center

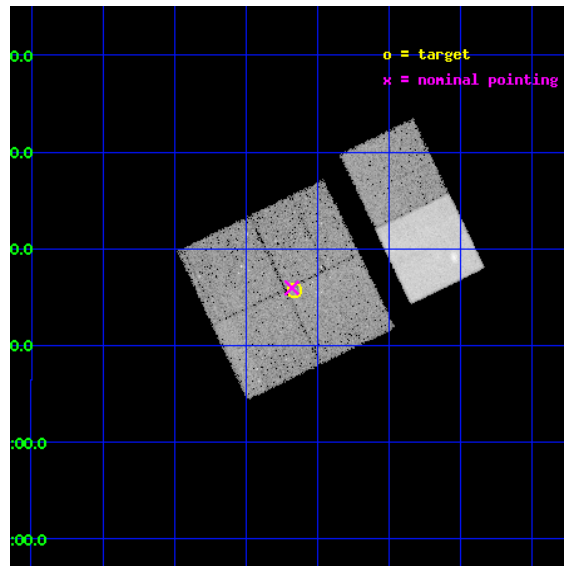
L2 Processing Date : Apr 16 2012

Contents

1	Front	2
2	OBI	3
2.1	OBI	3
2.1.1	Images	3
2.1.2	Bias	3
2.1.3	Parameters	4
2.1.4	Events	4
2.2	Compared Parameters	5
2.3	Aspect	6
2.4	Star Slots	9
2.4.1	Slot 3	9
2.4.2	Slot 4	10
2.4.3	Slot 5	11
2.4.4	Slot 6	12
2.4.5	Slot 7	13
2.5	FID Slots	14
2.5.1	Slot 0	14
2.5.2	Slot 1	15
2.5.3	Slot 2	16
A	Summary	17
A.1	Status	17
A.2	Comments	17

1 Front

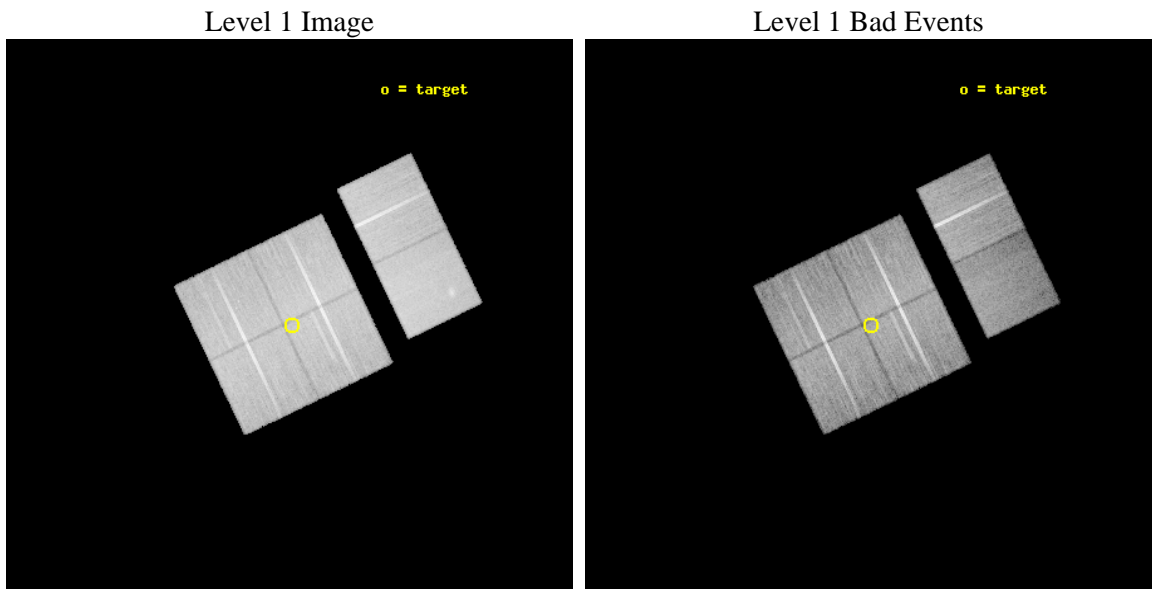
seq_num	900551	Sequence number
obs_id	8497	Observation id
title	THE CHANDRA-COSMOS SURVEY	Proposal title
observer	Dr. Martin Elvis	Principal investigator
object	C-COSMOS3-4	Source name
dtcycle	0	
cycle	P	events from which exps? Prim/Second/Both
ra_targ	150.04145	Observer's specified target RA [deg]
dec_targ	2.262956	Observer's specified target Dec [deg]
ra_nom	150.04492768386	Nominal RA [deg]
dec_nom	2.2661123582512	Nominal Dec [deg]
roll_nom	64.20854338335	Nominal Roll [deg]
revision	3	Processing version of data
ontime	28153.599895179	Sum of GTIs [s]
livetime	27797.102061244	Livetime [s]
ontime0	28153.599895179	Sum of GTIs [s]
ontime1	28153.599895179	Sum of GTIs [s]
ontime2	28153.599895179	Sum of GTIs [s]
ontime3	28153.599895179	Sum of GTIs [s]
ontime6	28150.358904898	Sum of GTIs [s]
ontime7	28153.599895179	Sum of GTIs [s]
l2events	189852	Number of level 2 events



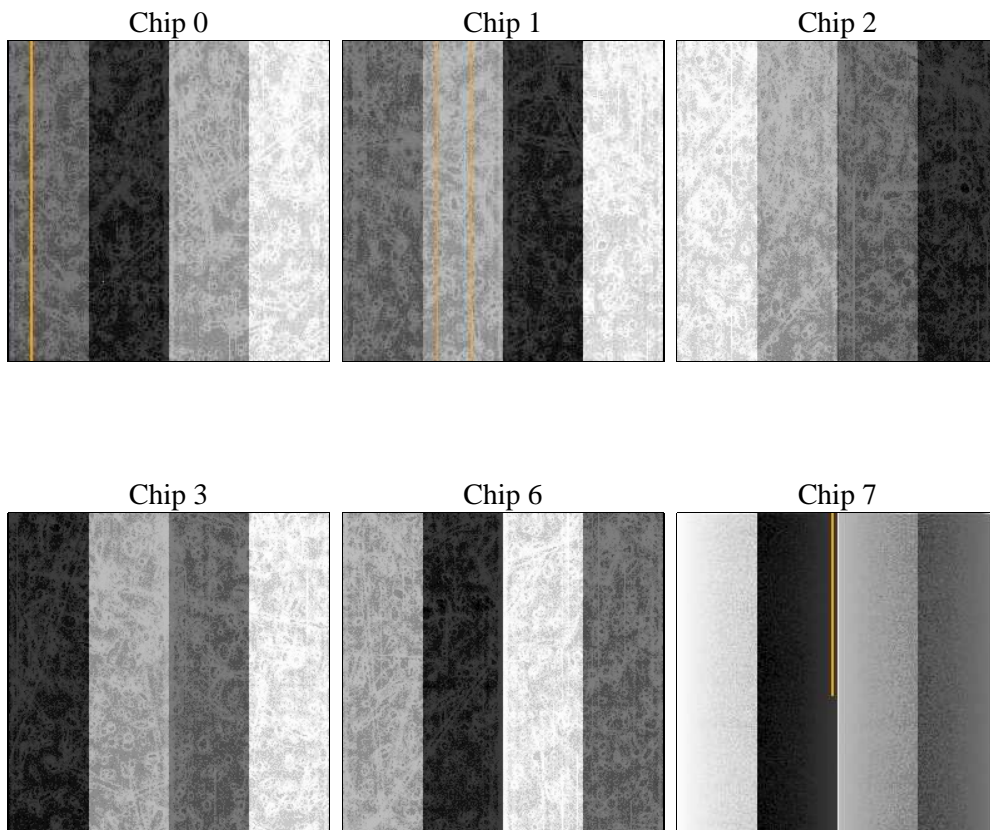
2 OBI

2.1 OBI

2.1.1 Images



2.1.2 Bias



2.1.3 Parameters

obi_num	0	Obi number	sched_exp_time	28000.000000	[s] Scheduled observation exposure time
ascdsver	8.4.3.1	Processing system revision	ontime	28153.599895179	Sum of GTIs [s]
caldbver	4.4.9	 	ontime0	28153.599895179	Sum of GTIs [s]
date	2012-04-16T04:46:05	Date and time of file creation	ontime1	28153.599895179	Sum of GTIs [s]
revision	3	Processing version of data	ontime2	28153.599895179	Sum of GTIs [s]
			ontime3	28153.599895179	Sum of GTIs [s]
			ontime6	28150.358904898	Sum of GTIs [s]
			ontime7	28153.599895179	Sum of GTIs [s]
			l1events	1257411	Number of level 1 events

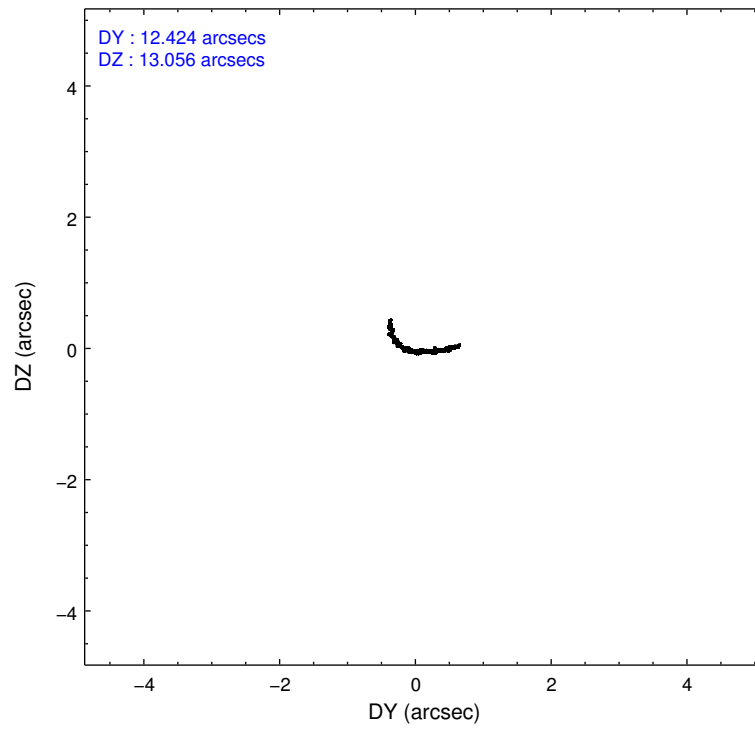
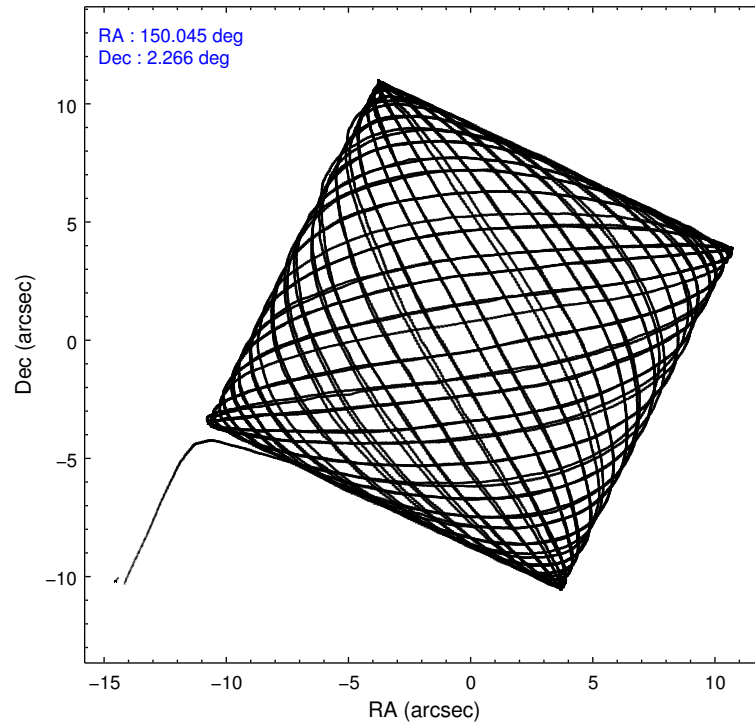
2.1.4 Events

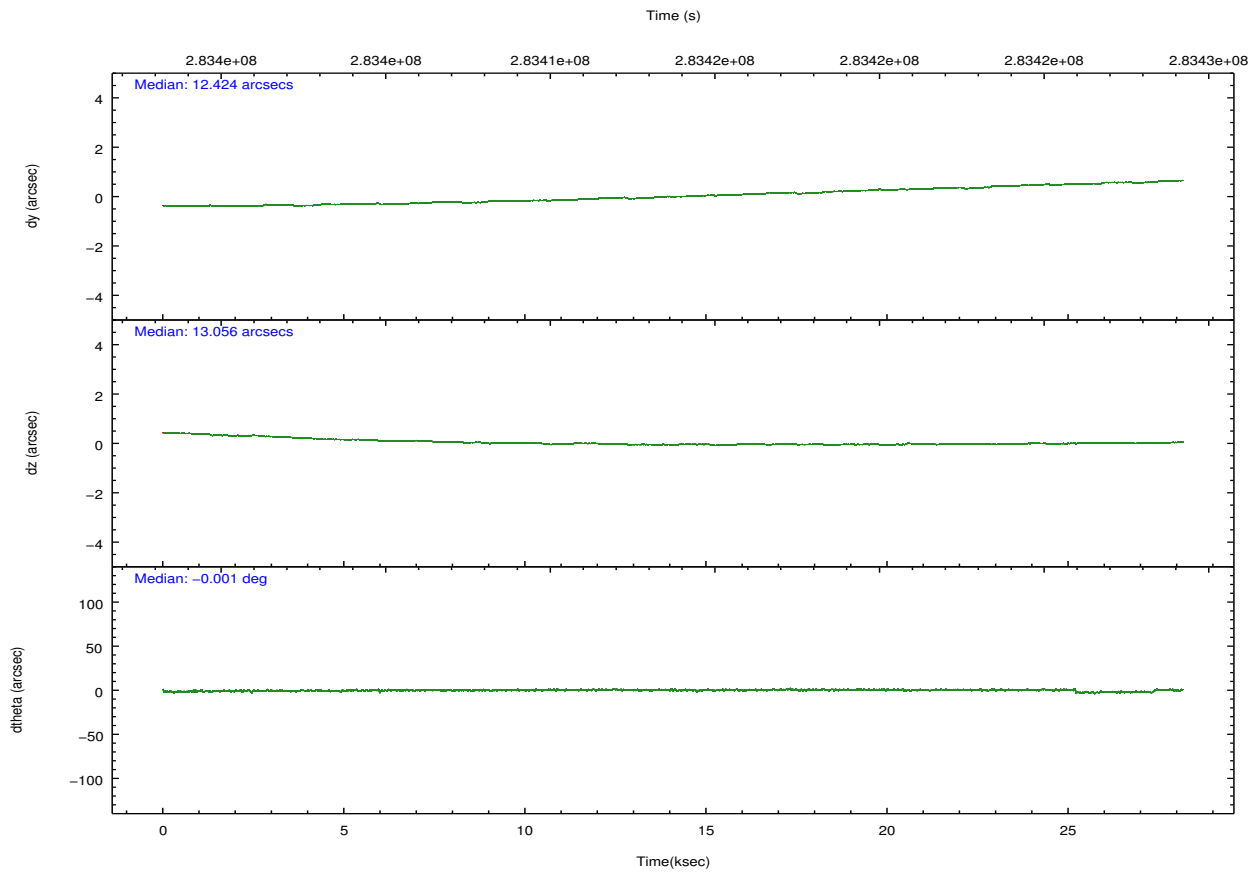
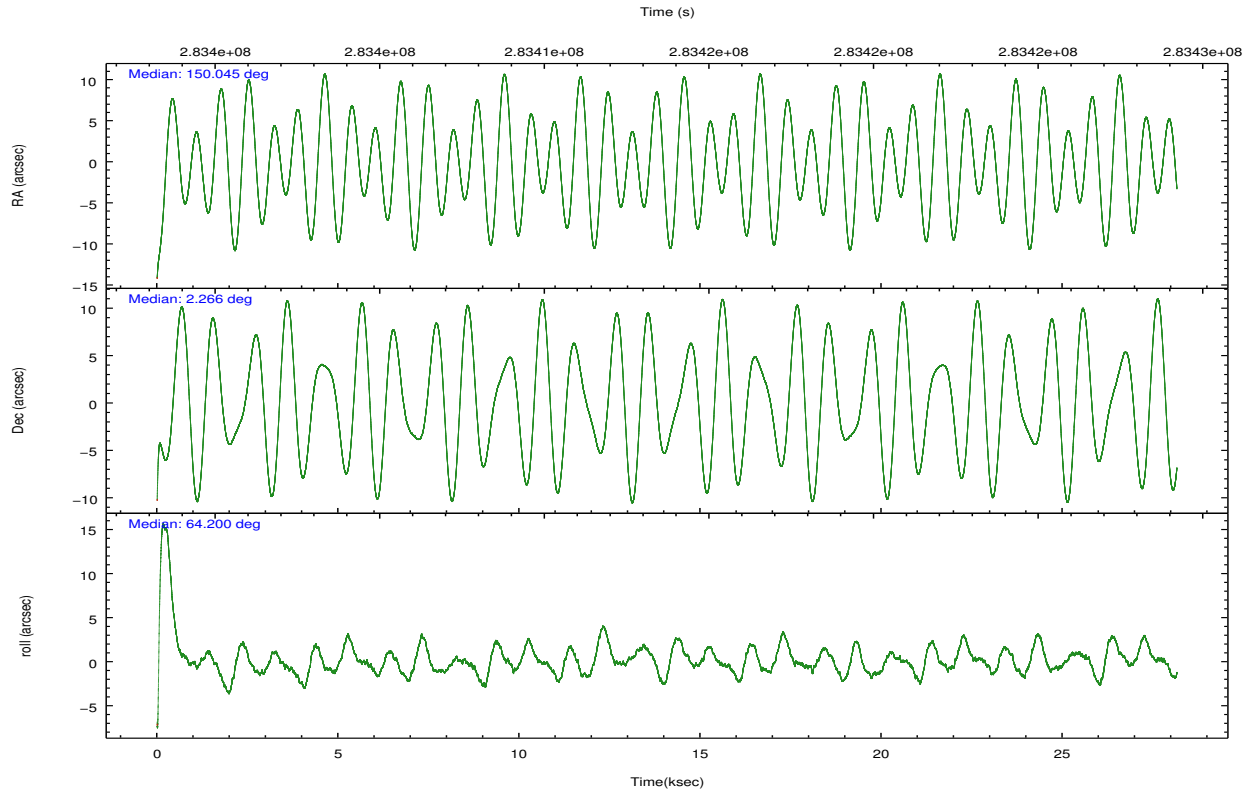
	ccd 0	ccd 1	ccd 2	ccd 3	ccd 6	ccd 7		ccd 0	ccd 1	ccd 2	ccd 3	ccd 6	ccd 7
level 1 events	193503	195775	216045	205375	213631	233082	grade 0 events	7385	8393	7453	7116	7485	10332
rejected events	173040	172766	195756	185430	192199	127568		3%	4%	3%	3%	3%	4%
rejected %	89%	88%	90%	90%	89%	54%	grade 1 events	118	70	119	118	98	316
								0%	0%	0%	0%	0%	0%
							grade 2 events	4803	5146	4860	4398	4794	21252
								2%	2%	2%	2%	2%	9%
							grade 3 events	2290	2468	2141	2260	2394	9808
								1%	1%	0%	1%	1%	4%
							grade 4 events	2216	2482	2235	2226	2293	9650
								1%	1%	1%	1%	1%	4%
							grade 5 events	7001	7980	6803	8327	8503	24466
								3%	4%	3%	4%	3%	10%
							grade 6 events	3871	4638	3726	4054	4573	55026
								2%	2%	1%	1%	2%	23%
							grade 7 events	165819	164598	188708	176876	183491	102232
								85%	84%	87%	86%	85%	43%

2.2 Compared Parameters

Parameter	Planned	Actual	Parameter	Planned	Actual
Instrument	ACIS	ACIS	Obspar format version number	7	7
Detector	ACIS-012367	ACIS-012367	Obspar file type	PREDICTED	ACTUAL
Grating	NONE	NONE	Obspar update status	NONE	UPDATED
Data mode	VFAINT	VFAINT	CCD I0 on	Y	Y
Observation mode	POINTING	POINTING	CCD I1 on	Y	Y
[deg] Pointing RA	150.047061	150.0449276838648	CCD I2 on	Y	Y
[deg] Pointing Dec	2.238713	2.266112358251208	CCD I3 on	Y	Y
[deg] Pointing Roll	63.999780	64.20854338334992	CCD S0 on	N	N
[mm] SIM focus pos	-0.782348	-0.7809083437167272	CCD S1 on	N	N
[mm] SIM defocus	0	0.001439871863259334	CCD S2 on	O1	Y
[mm] SIM translation stage pos	-233.592463	-233.5874344608287	CCD S3 on	O2	Y
[mm] SIM translation stage offset	0	-0.005018542100998502	CCD S4 on	N	N
[s] Observation start time (MET)	283399821.184000	283398678.03927	CCD S5 on	N	N
Observation start date	2006-12-25T02:09:16	2006-12-25T01:51:18	Number of optional ACIS chips dropped	0	0
[s] Observation end time (MET)	283427821.184000	283428373.31568	On-chip summing requested	N	N
Observation end date	2006-12-25T09:55:56	2006-12-25T10:06:13	Subarray requested	NONE	NONE
Read mode	TIMED	TIMED	Alternating exposures requested	N	N
			[s] Primary exposure time	0.000000	3.2

2.3 Aspect



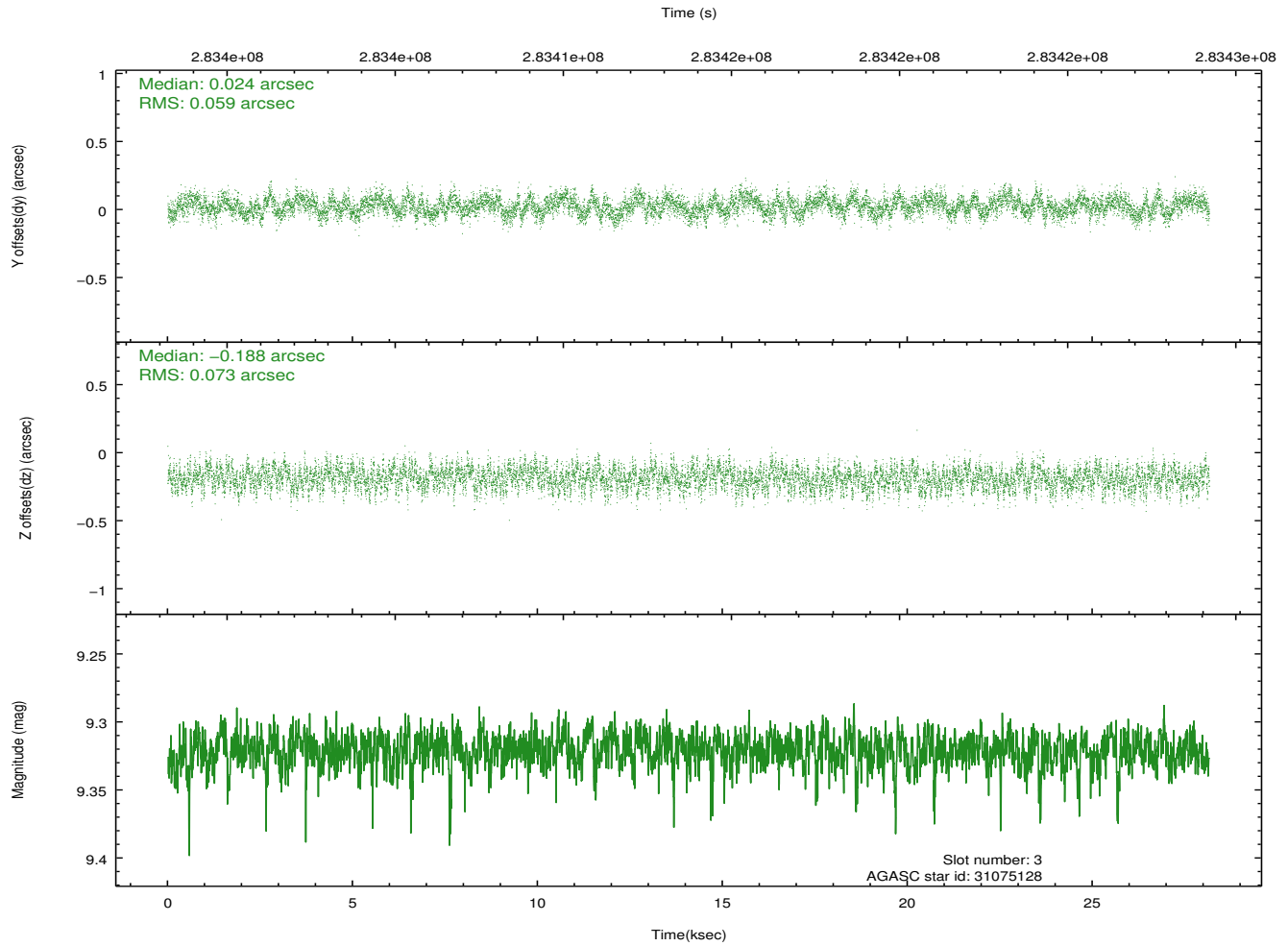
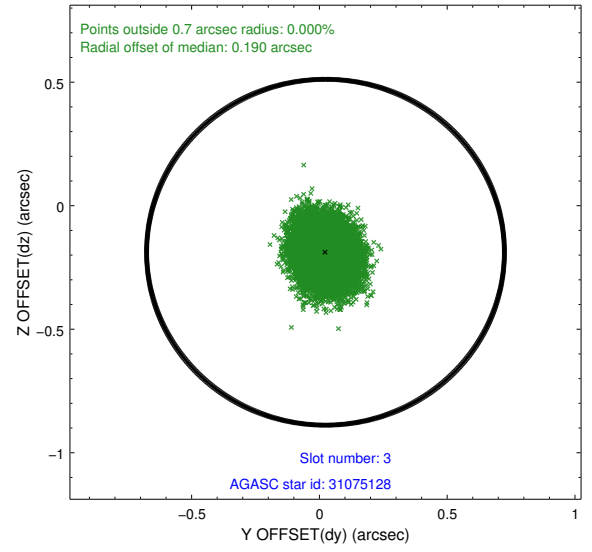
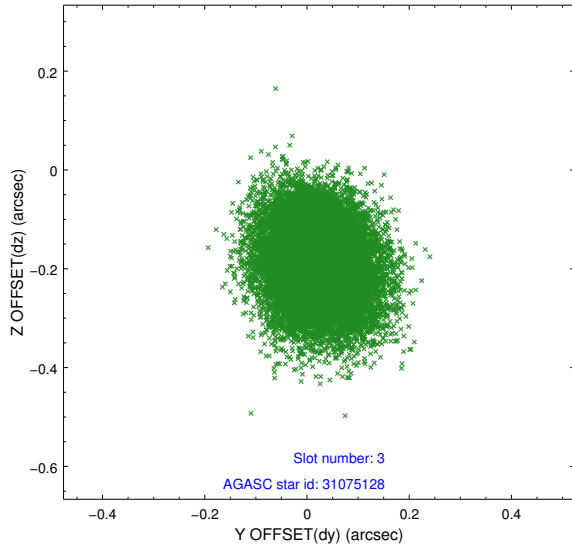


Slot Statistics

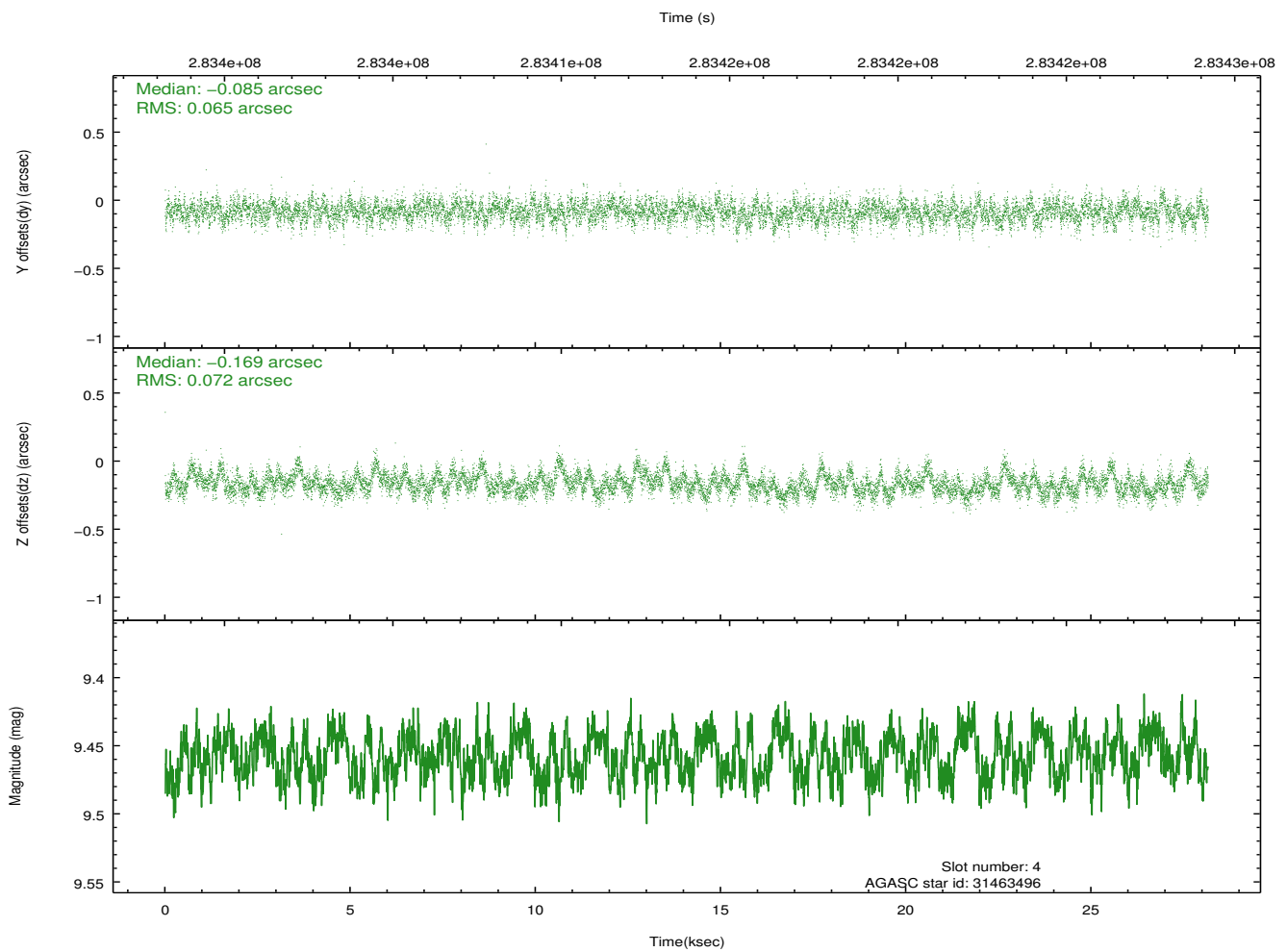
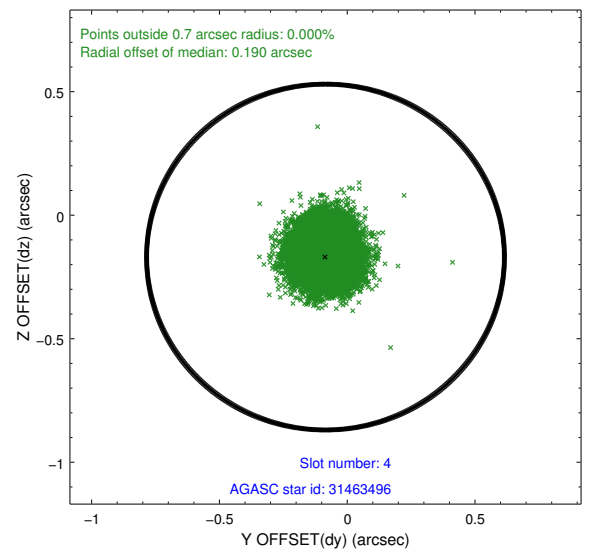
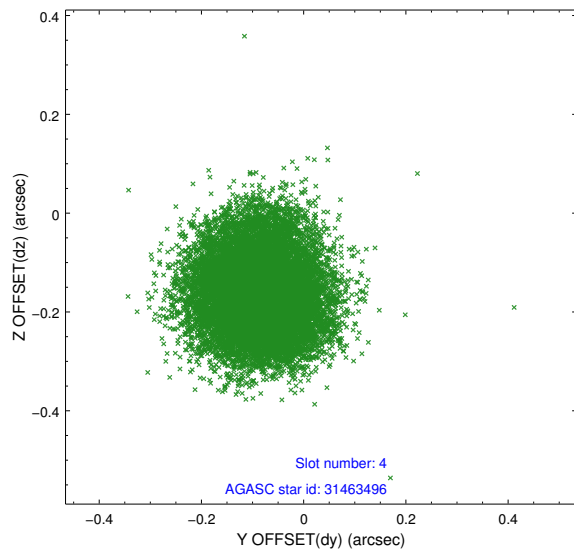
slot	status	id	mag	n_pts	med_dy	med_dz	dr1	dr2	ra	dec	mean_y	mean_z
0	FID	ACIS-I-1	7.24	6868	-0.015	-0.004	0.011	0.025	0.000000	0.000000	927.04	-836.67
1	FID	ACIS-I-4	7.18	6866	0.214	0.033	0.012	0.022	0.000000	0.000000	2147.39	1063.11
2	FID	ACIS-I-5	7.23	6869	-0.298	0.041	0.012	0.020	0.000000	0.000000	-1821.10	1061.13
3	GUIDE	31075128	9.32	13724	0.024	-0.188	0.101	0.160	149.584516	2.364347	-322.38	1693.66
4	GUIDE	31463496	9.46	13724	-0.085	-0.169	0.103	0.166	149.845020	2.964001	2028.52	1797.98
5	GUIDE	31983224	9.48	13611	0.090	0.229	0.109	0.176	150.543757	1.869948	-408.49	-2187.71
6	GUIDE	31983336	8.59	13732	0.129	0.062	0.066	0.108	150.429924	2.291234	774.57	-1154.70
7	GUIDE	32374896	9.23	13660	-0.158	0.061	0.093	0.151	150.682269	2.512794	1889.30	-1620.28

2.4 Star Slots

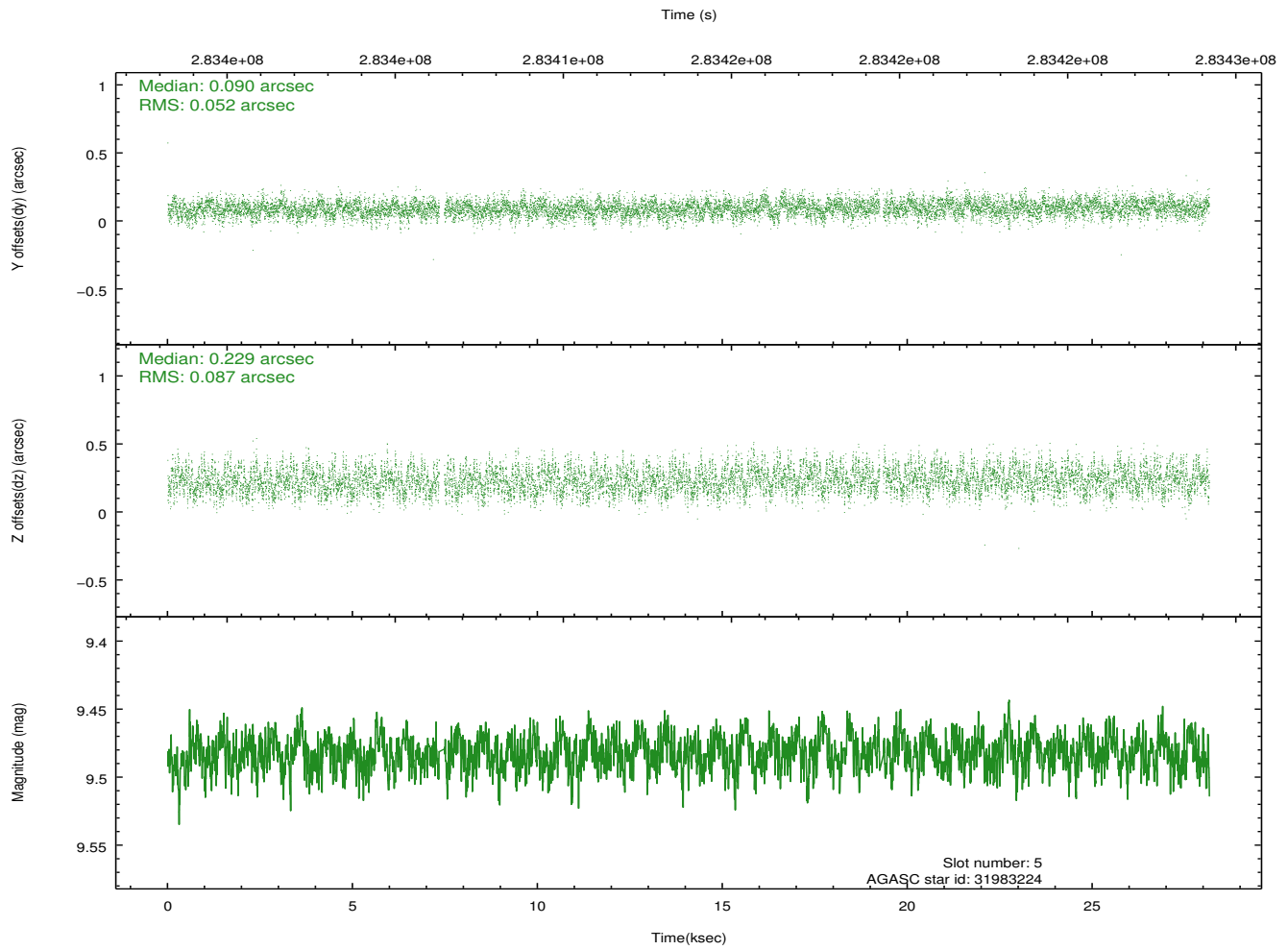
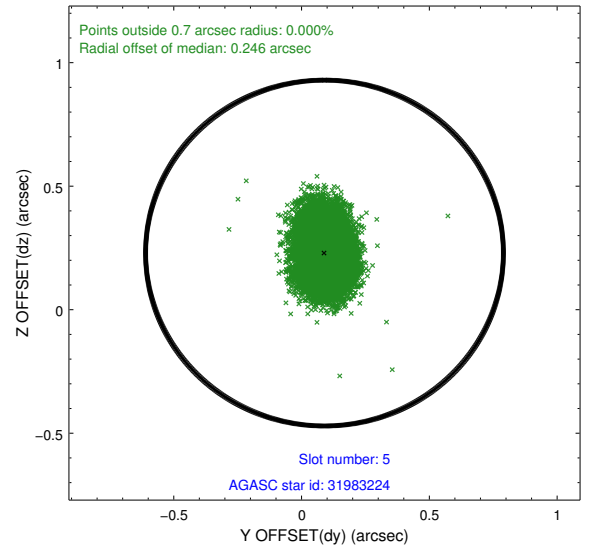
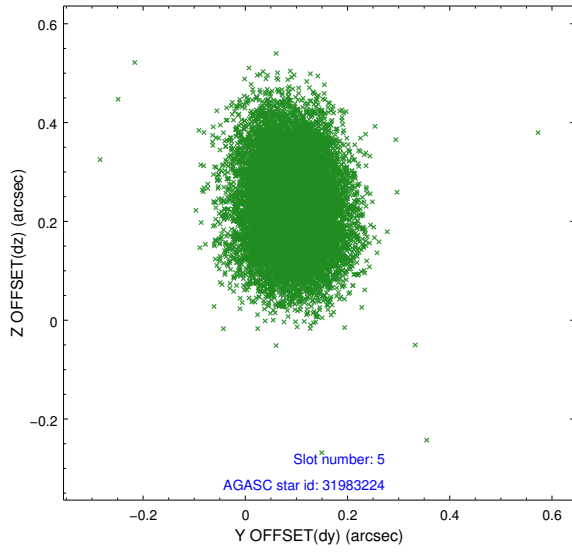
2.4.1 Slot 3



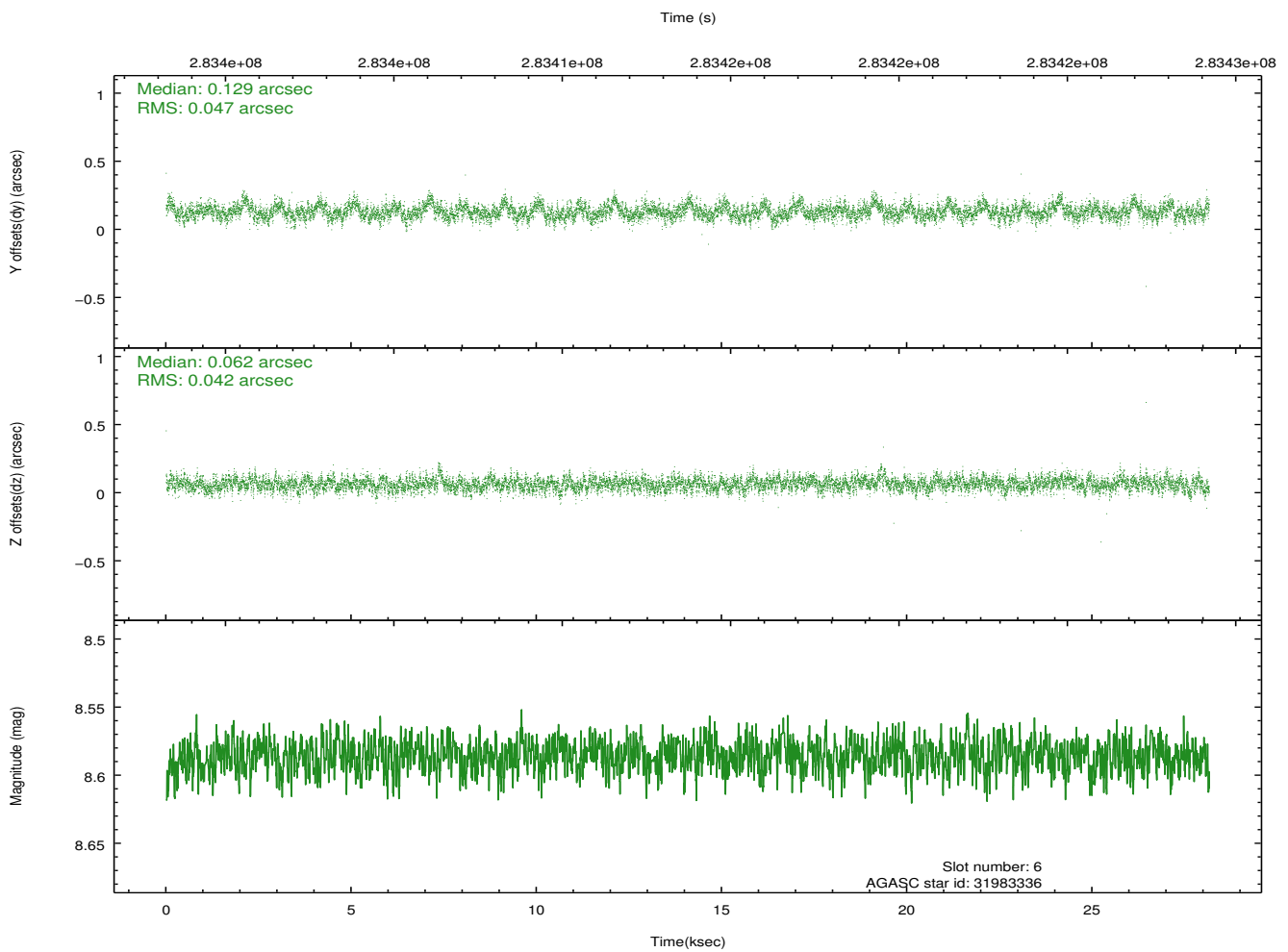
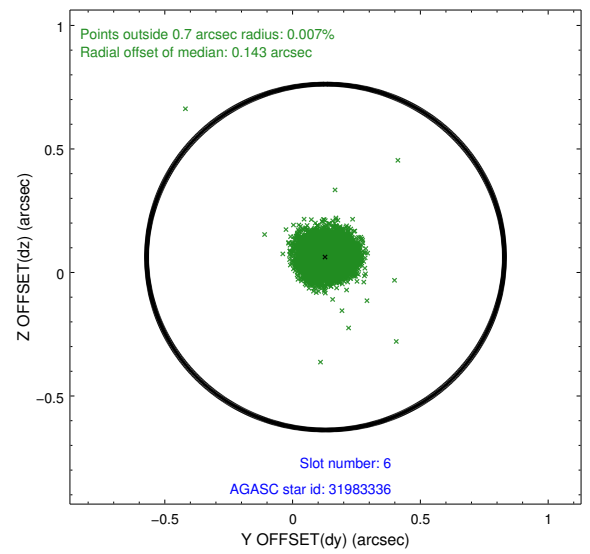
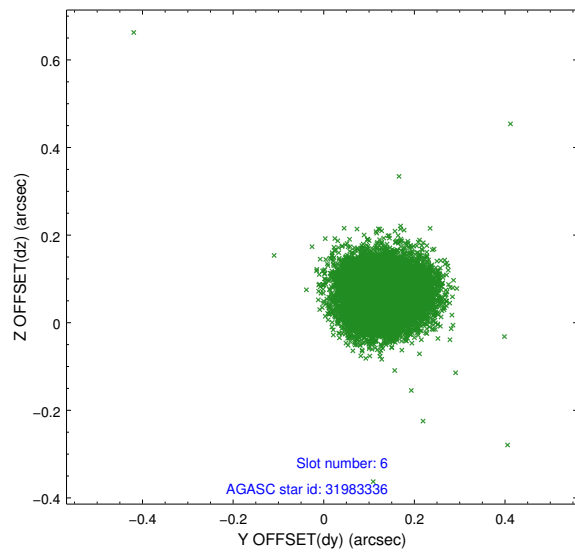
2.4.2 Slot 4



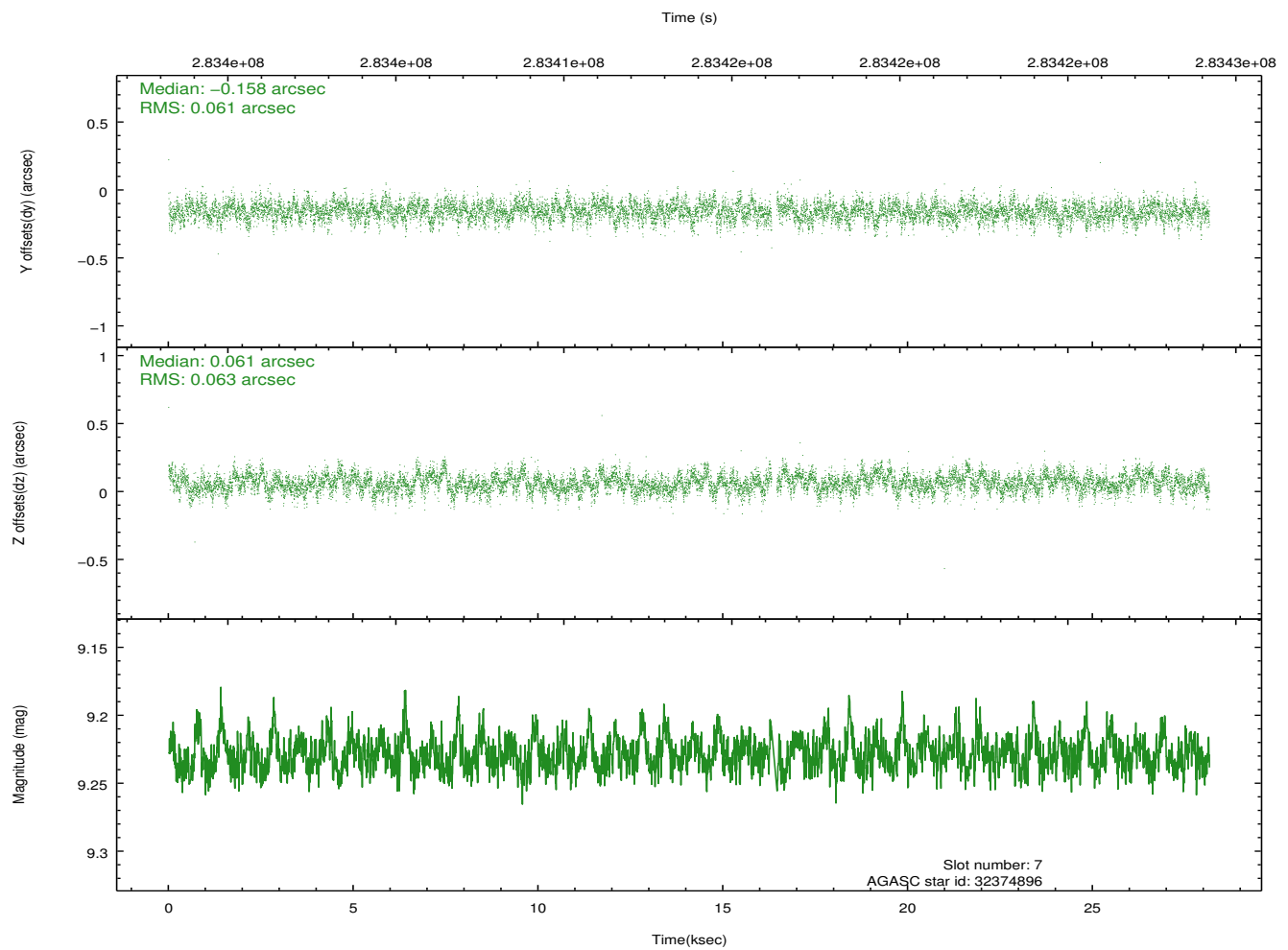
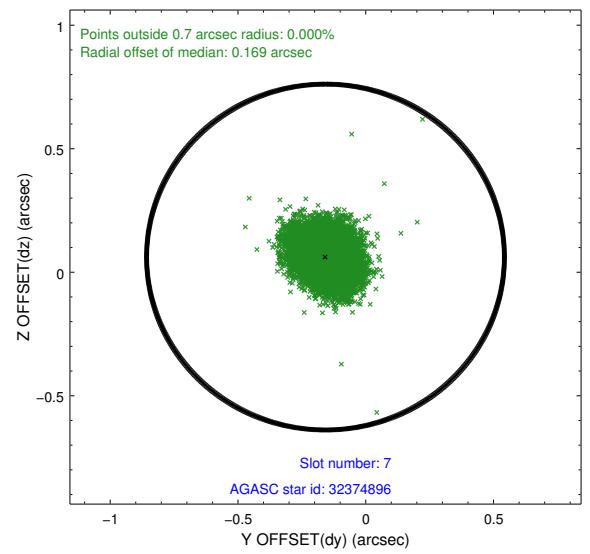
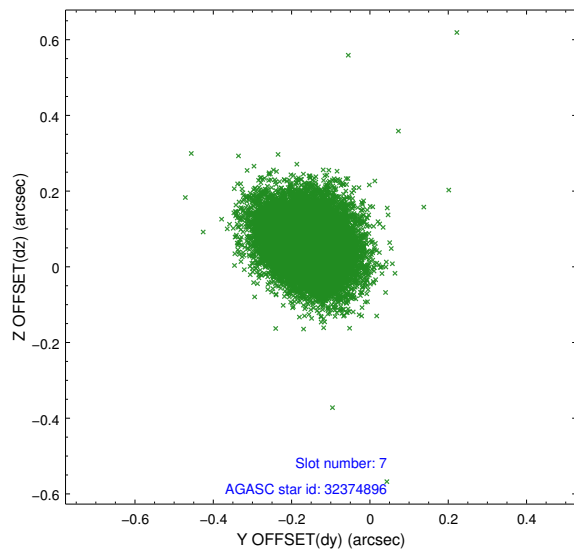
2.4.3 Slot 5



2.4.4 Slot 6

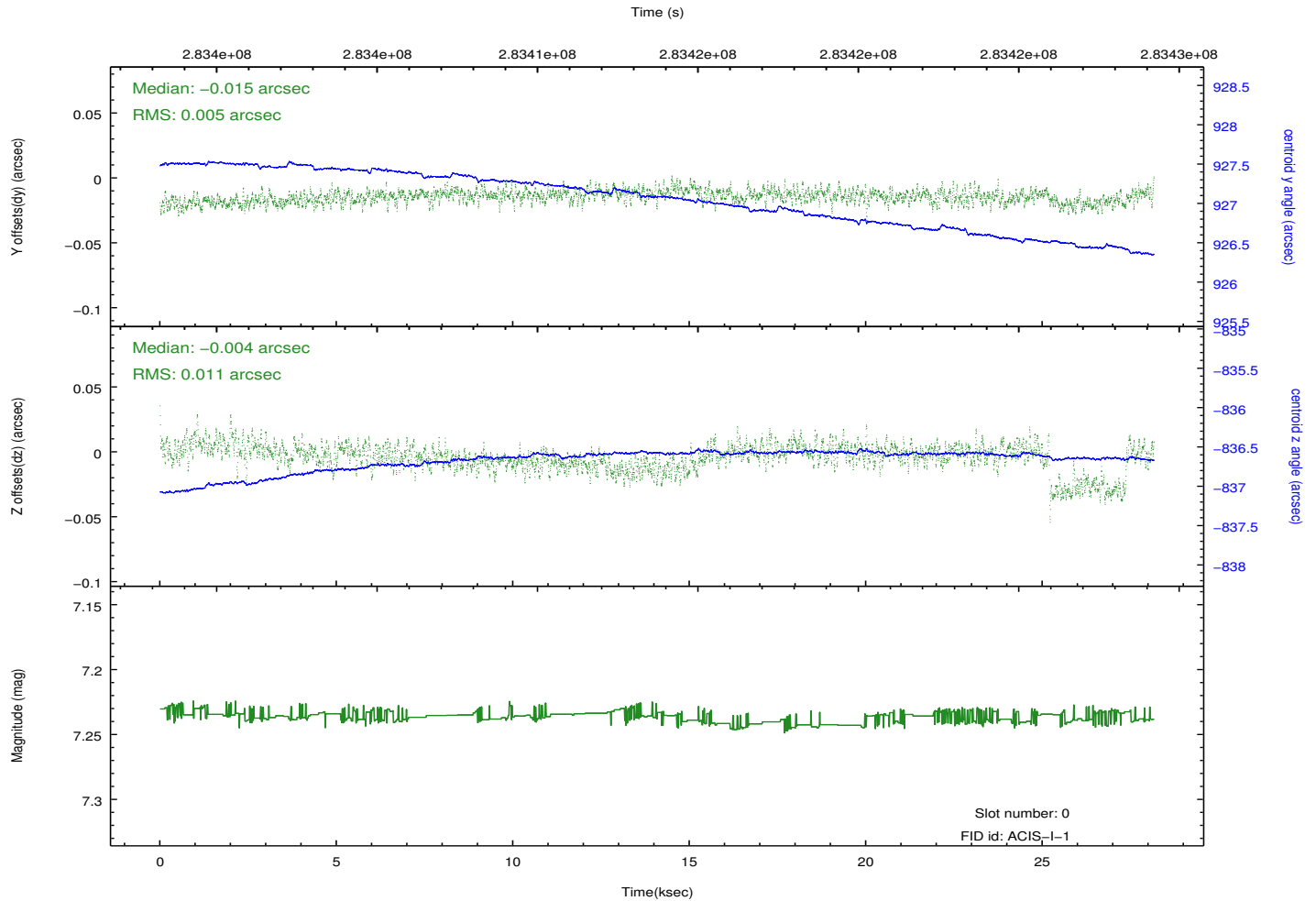
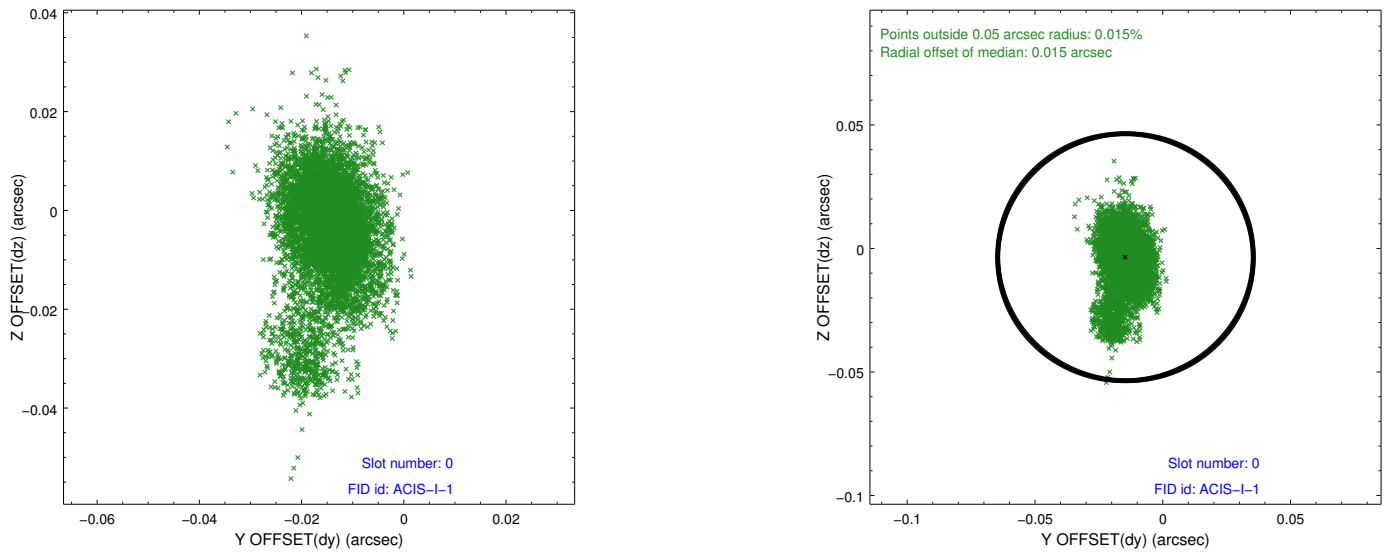


2.4.5 Slot 7

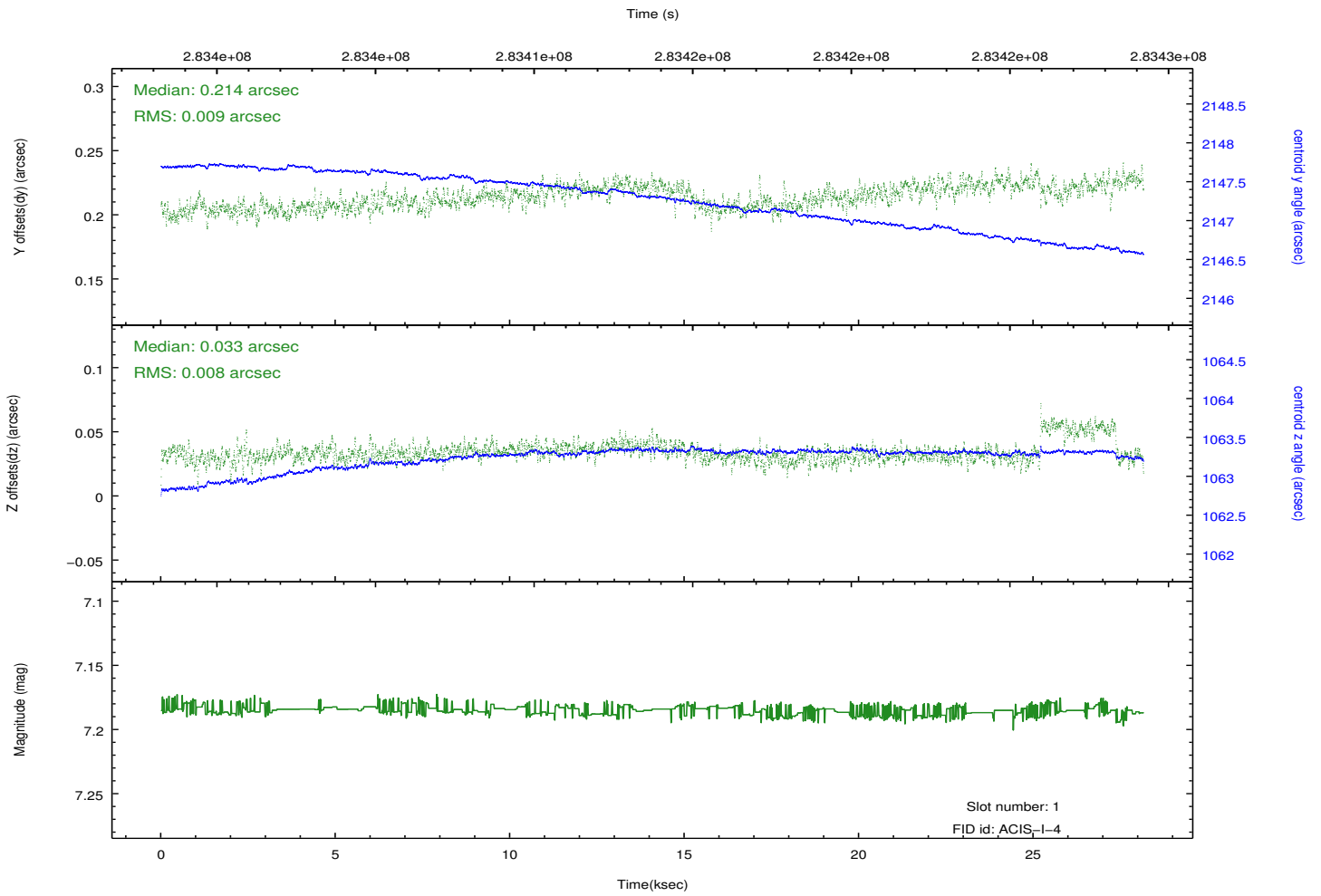
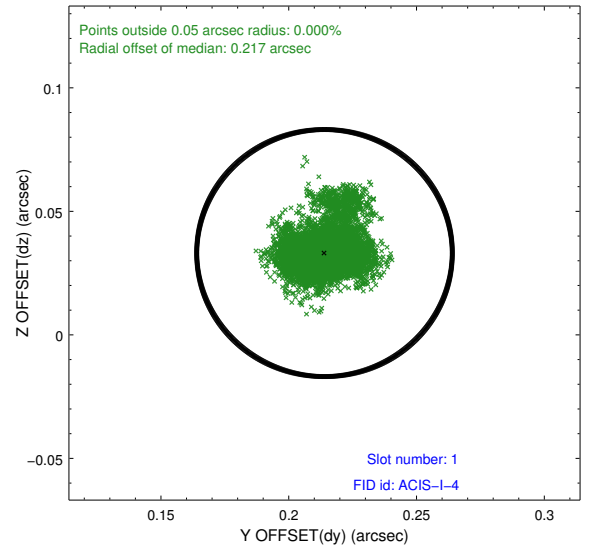
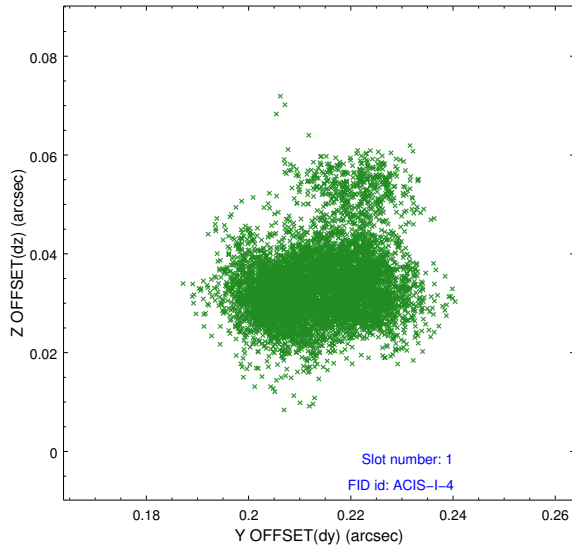


2.5 FID Slots

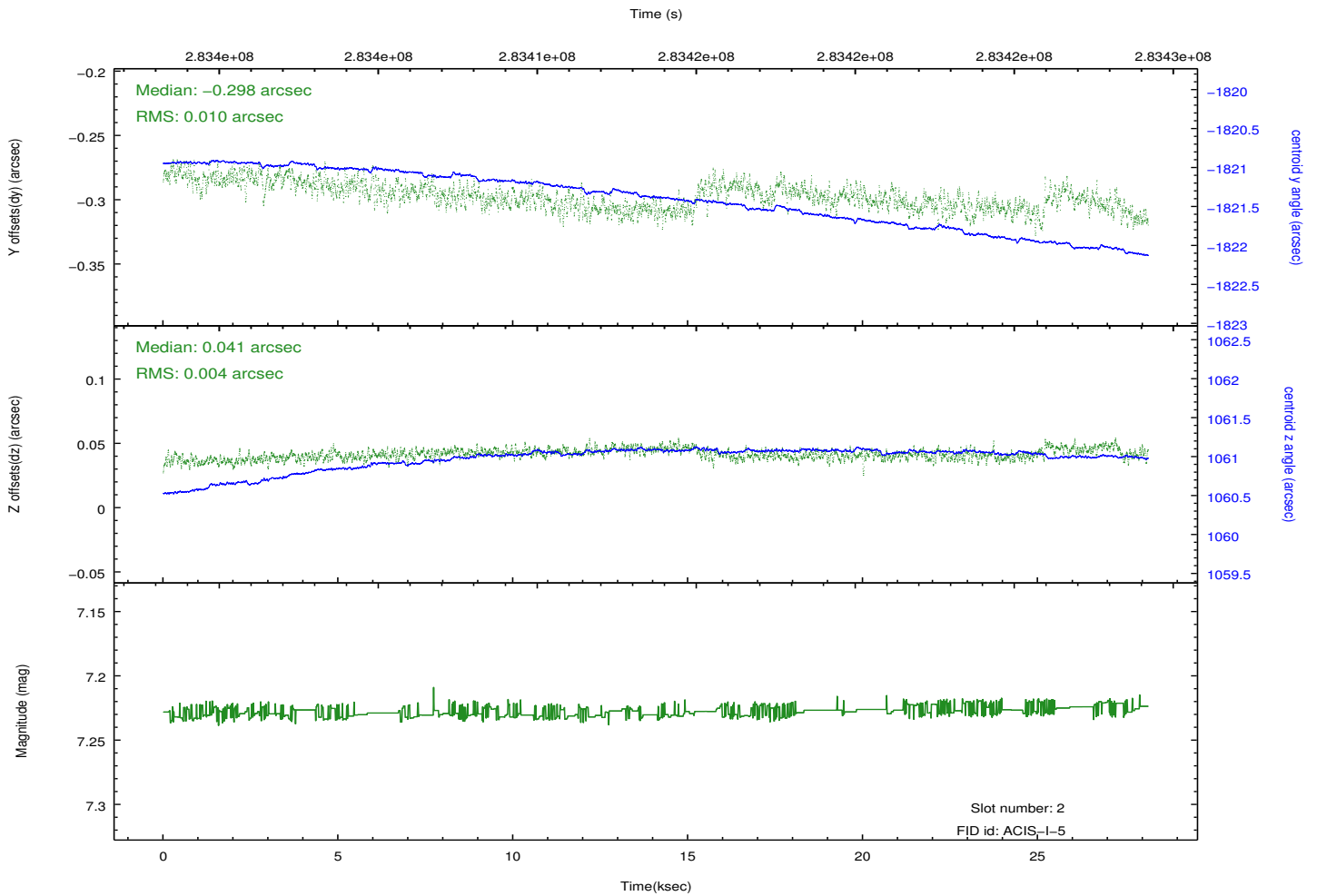
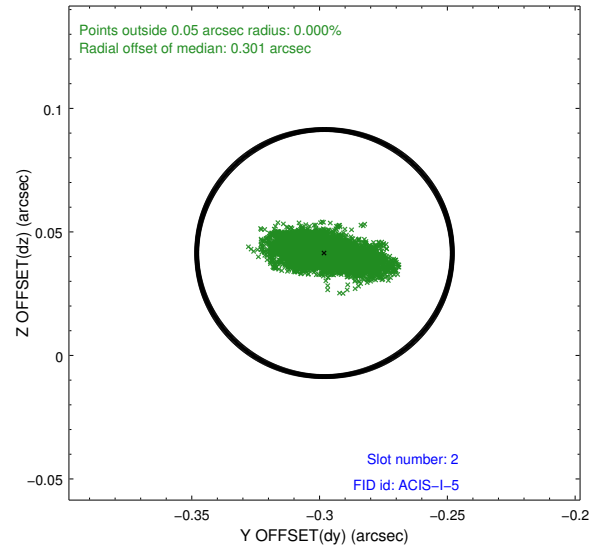
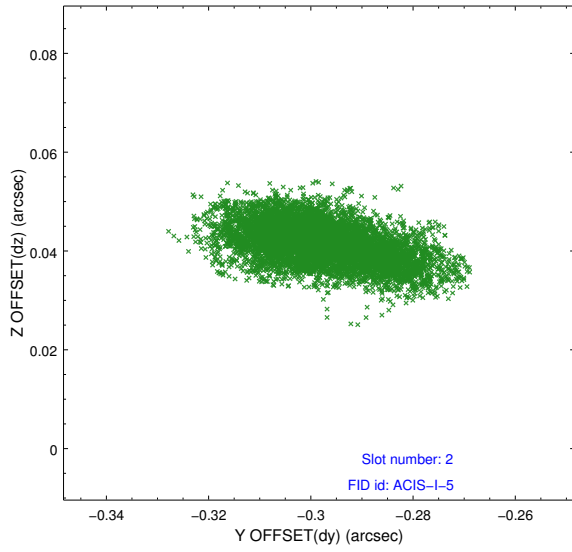
2.5.1 Slot 0



2.5.2 Slot 1



2.5.3 Slot 2



A Summary

A.1 Status

V&V Scientist	Beth Sundheim
V&V Date (YYYY-MM-DD)	2012.04.18
V&V Edition	1
V&V Disposition and Status	OK
V&V Charge Time	28.1535998

A.2 Comments