

V&V Reference Report

L2 ASCDS Version : 8.4.4

Observation 8627 - L2 Version 2
Chandra X-Ray Center

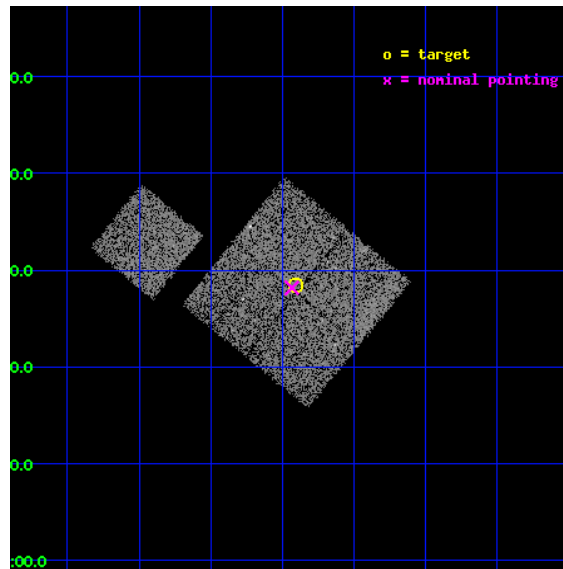
L2 Processing Date : May 5 2012

Contents

1	Front	2
2	OBI	3
2.1	OBI	3
2.1.1	Images	3
2.1.2	Bias	3
2.1.3	Parameters	4
2.1.4	Events	4
2.2	Compared Parameters	5
2.3	Aspect	6
2.4	Star Slots	9
2.4.1	Slot 3	9
2.4.2	Slot 4	10
2.4.3	Slot 5	11
2.4.4	Slot 6	12
2.4.5	Slot 7	13
2.5	FID Slots	14
2.5.1	Slot 0	14
2.5.2	Slot 1	15
2.5.3	Slot 2	16
A	Summary	17
A.1	Status	17
A.2	Comments	17

1 Front

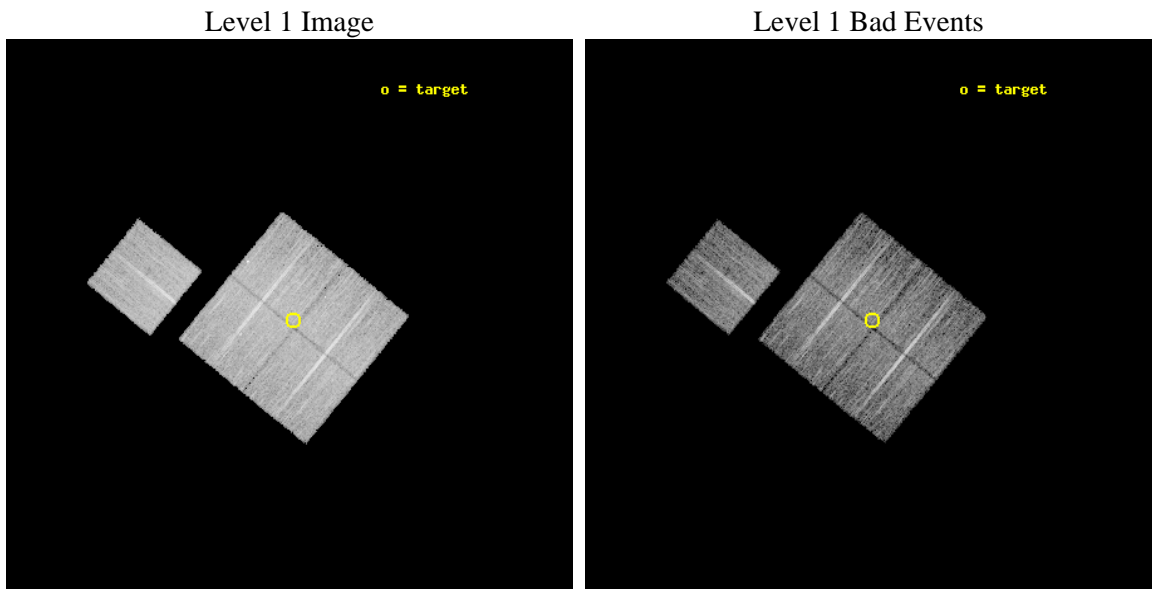
seq_num	900764	Sequence number
obs_id	8627	Observation id
title	Chandra Observations of the DEEP2 Fields	Proposal title
observer	Dr. Stephen Murray	Principal investigator
object	DEEP2 Field 4	Source name
dtcycle	0	
cycle	P	events from which exps? Prim/Second/Both
ra_targ	37.226556	Observer's specified target RA [deg]
dec_targ	0.473926	Observer's specified target Dec [deg]
ra_nom	37.233328119458	Nominal RA [deg]
dec_nom	0.46949485316395	Nominal Dec [deg]
roll_nom	309.23863687344	Nominal Roll [deg]
revision	2	Processing version of data
ontime	8573.1654613018	Sum of GTIs [s]
livetime	8461.1507430773	Livetime [s]
ontime0	8573.0423412919	Sum of GTIs [s]
ontime1	8573.0833812952	Sum of GTIs [s]
ontime2	8573.1244212985	Sum of GTIs [s]
ontime3	8573.1654613018	Sum of GTIs [s]
ontime6	8573.0013012886	Sum of GTIs [s]
l2events	29852	Number of level 2 events



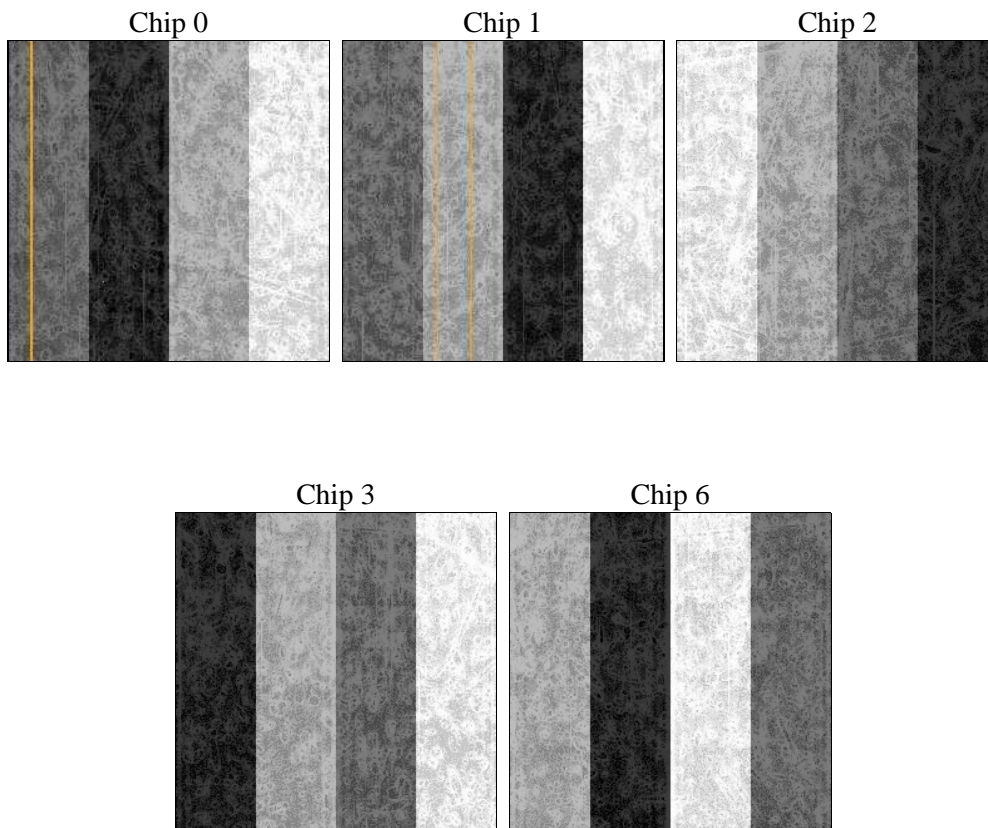
2 OBI

2.1 OBI

2.1.1 Images



2.1.2 Bias



2.1.3 Parameters

obi_num	0	Obi number	sched_exp_time	8800.000000	[s] Scheduled observation exposure time
ascdsver	8.4.4	Processing system revision	ontime	8573.1654613018	Sum of GTIs [s]
caldsver	4.4.9	 	ontime0	8573.0423412919	Sum of GTIs [s]
date	2012-05-05T20:46:37	Date and time of file creation	ontime1	8573.0833812952	Sum of GTIs [s]
revision	2	Processing version of data	ontime2	8573.1244212985	Sum of GTIs [s]
			ontime3	8573.1654613018	Sum of GTIs [s]
			ontime6	8573.0013012886	Sum of GTIs [s]
			l1events	350721	Number of level 1 events

2.1.4 Events

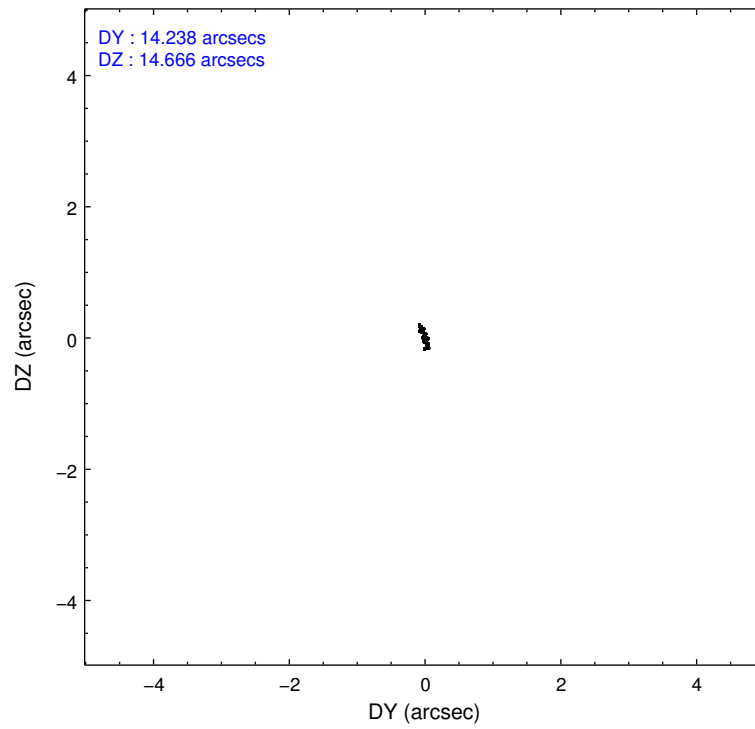
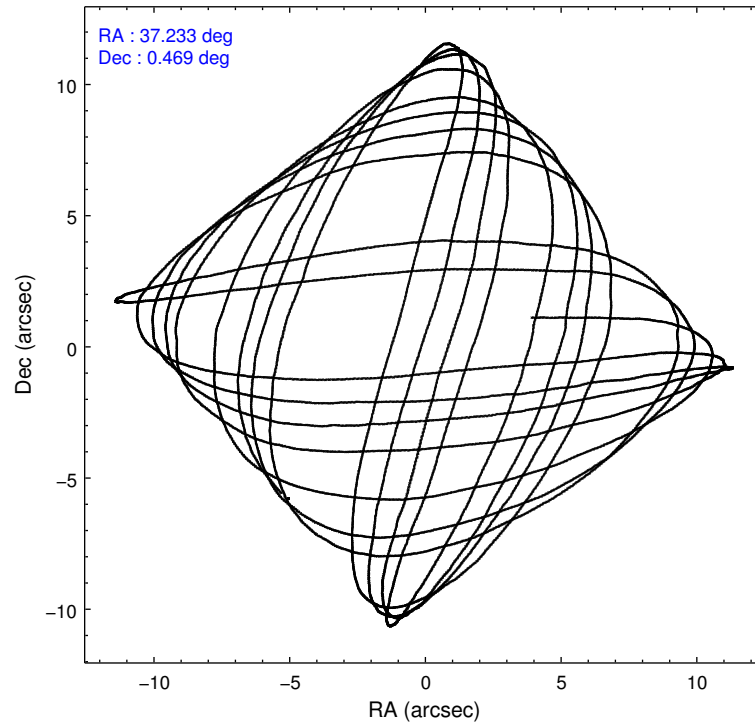
	ccd 0	ccd 1	ccd 2	ccd 3	ccd 6
level 1 events	65764	69539	73230	71199	70989
rejected events	58809	61400	66397	64225	64032
rejected %	89%	88%	90%	90%	90%

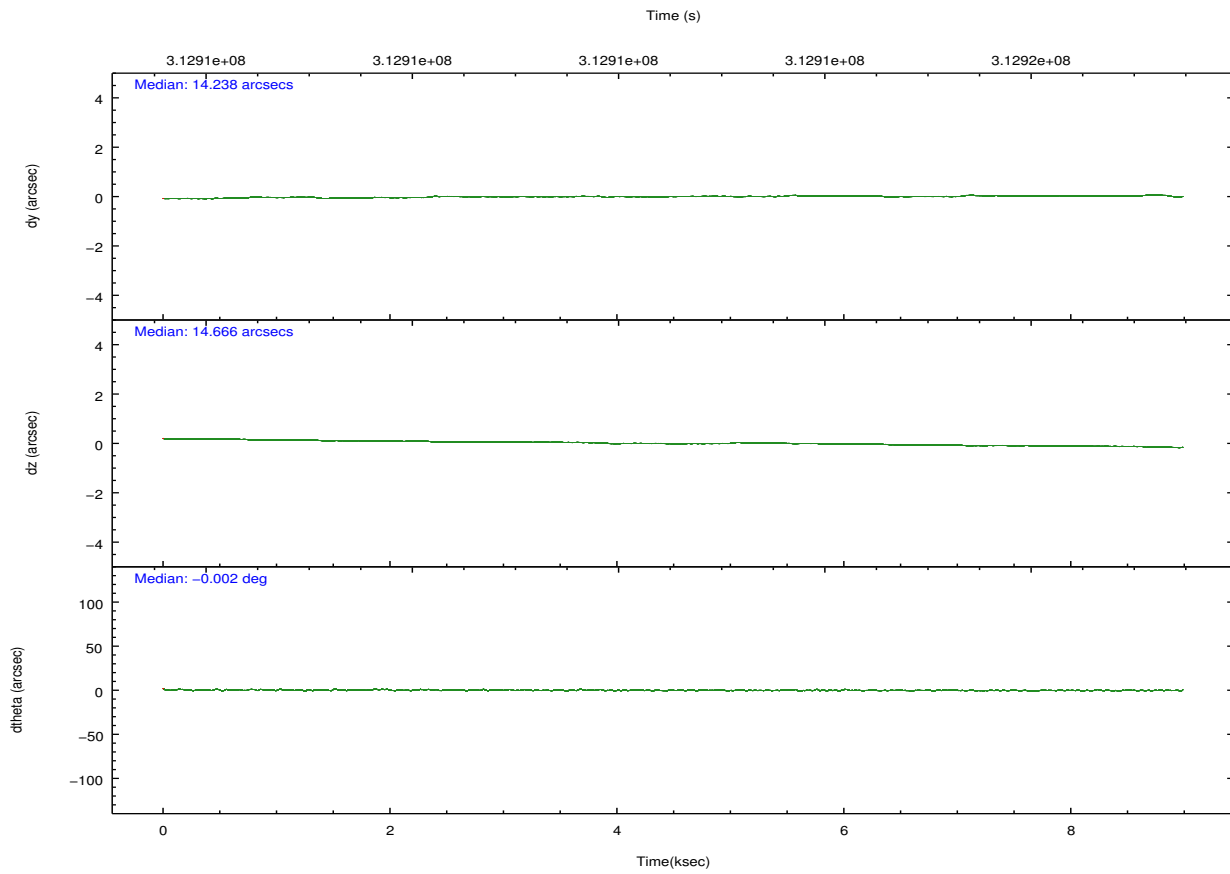
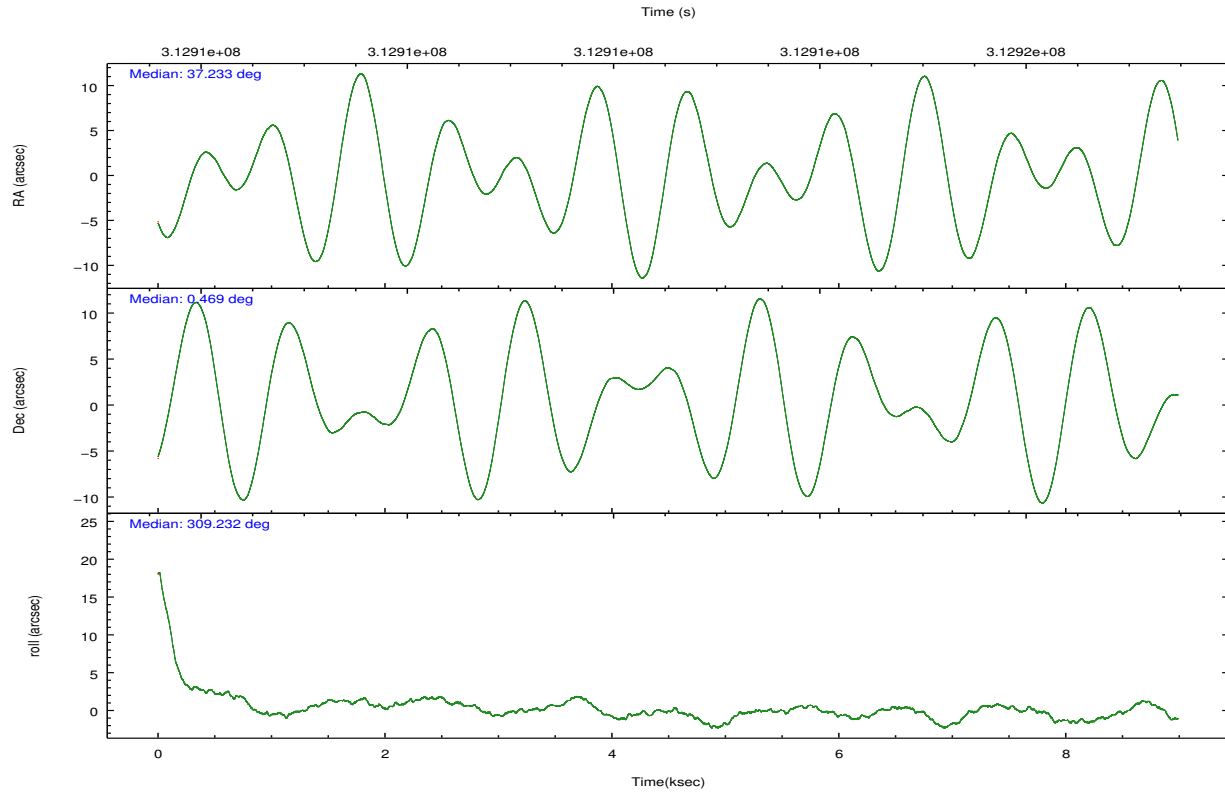
	ccd 0	ccd 1	ccd 2	ccd 3	ccd 6
grade 0 events	2444	3033	2522	2563	2313
	3%	4%	3%	3%	3%
grade 1 events	32	47	38	43	35
	0%	0%	0%	0%	0%
grade 2 events	1618	1832	1639	1448	1554
	2%	2%	2%	2%	2%
grade 3 events	798	890	689	801	824
	1%	1%	0%	1%	1%
grade 4 events	728	851	715	772	754
	1%	1%	0%	1%	1%
grade 5 events	2404	2683	2262	2900	2899
	3%	3%	3%	4%	4%
grade 6 events	1369	1537	1272	1395	1518
	2%	2%	1%	1%	2%
grade 7 events	56371	58666	64093	61277	61092
	85%	84%	87%	86%	86%

2.2 Compared Parameters

Parameter	Planned	Actual	Parameter	Planned	Actual
Instrument	ACIS	ACIS	Obspar format version number	7	7
Detector	ACIS-01236	ACIS-01236	Obspar file type	PREDICTED	ACTUAL
Grating	NONE	NONE	Obspar update status	NONE	UPDATED
Data mode	VFAINT	VFAINT	CCD I0 on	Y	Y
Observation mode	POINTING	POINTING	CCD I1 on	Y	Y
[deg] Pointing RA	37.207540	37.23332811945831	CCD I2 on	Y	Y
[deg] Pointing Dec	0.479115	0.4694948531639471	CCD I3 on	Y	Y
[deg] Pointing Roll	309.030161	309.2386368734418	CCD S0 on	N	N
[mm] SIM focus pos	-0.782348	-0.7809083437167272	CCD S1 on	N	N
[mm] SIM defocus	0	0.001439871863259334	CCD S2 on	O1	Y
[mm] SIM translation stage pos	-233.592463	-233.5874344608287	CCD S3 on	N	N
[mm] SIM translation stage offset	0	-0.005018542100998502	CCD S4 on	N	N
[s] Observation start time (MET)	312908221.184000	312907845.20094	CCD S5 on	N	N
Observation start date	2007-12-01T14:55:56	2007-12-01T14:50:45	Number of optional ACIS chips dropped	0	0
[s] Observation end time (MET)	312917021.184000	312917155.27639	On-chip summing requested	N	N
Observation end date	2007-12-01T17:22:36	2007-12-01T17:25:55	Subarray requested	NONE	NONE
Read mode	TIMED	TIMED	Alternating exposures requested	N	N
			[s] Primary exposure time	0.000000	3.1

2.3 Aspect



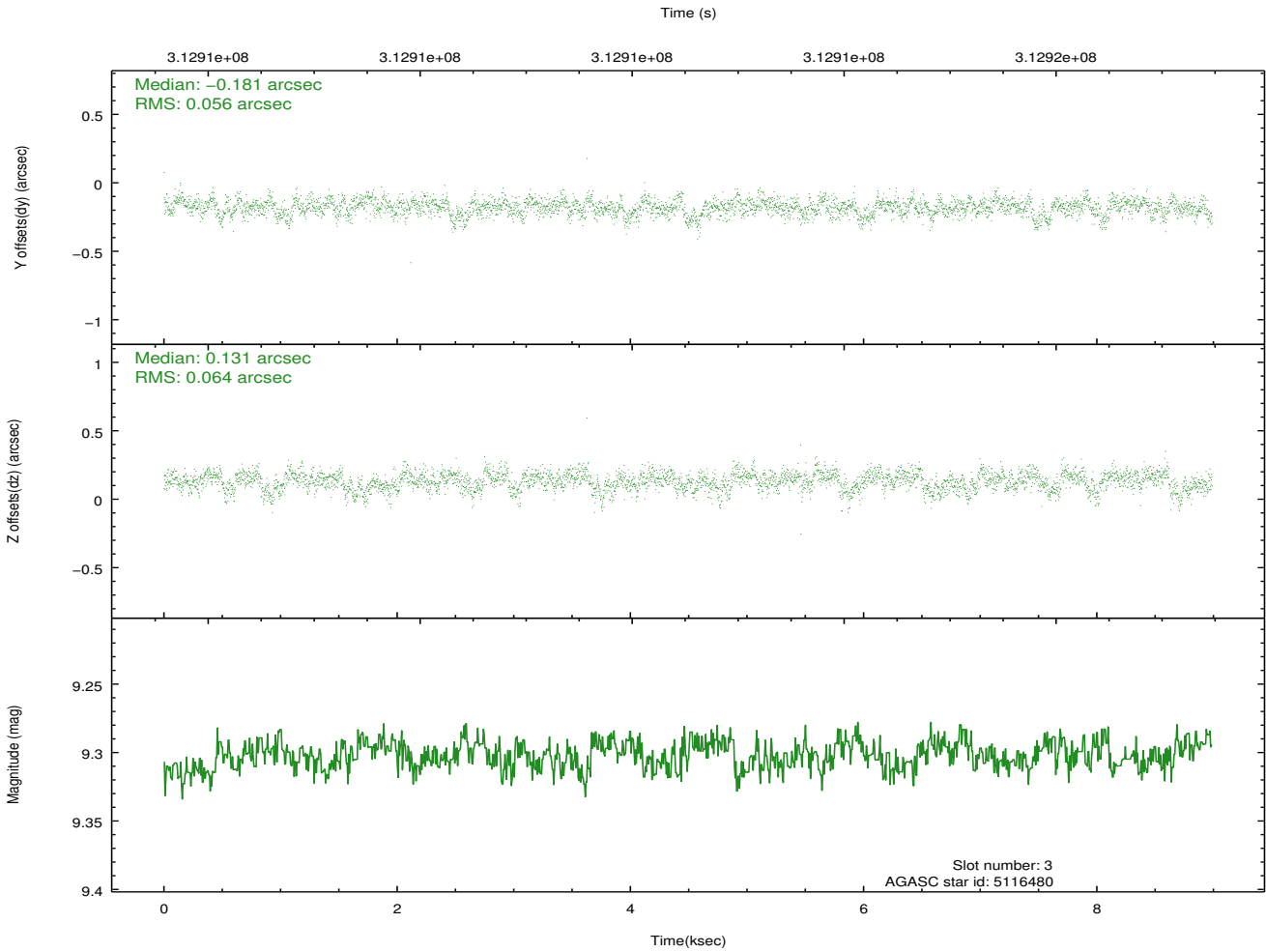
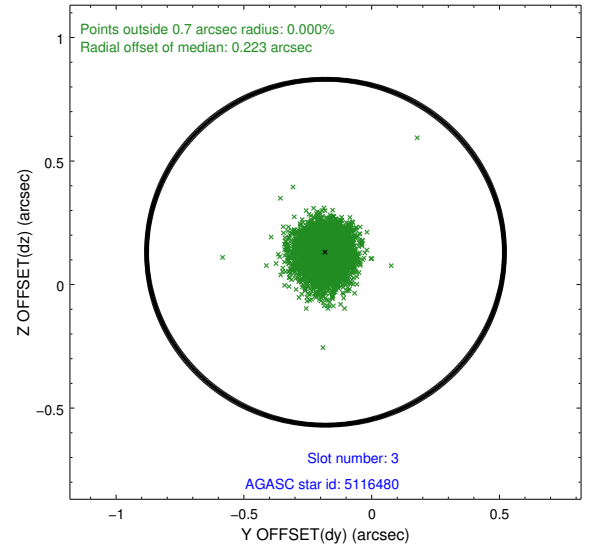
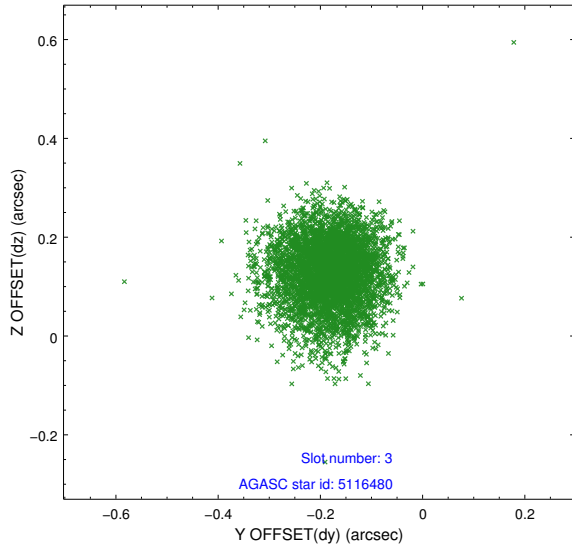


Slot Statistics

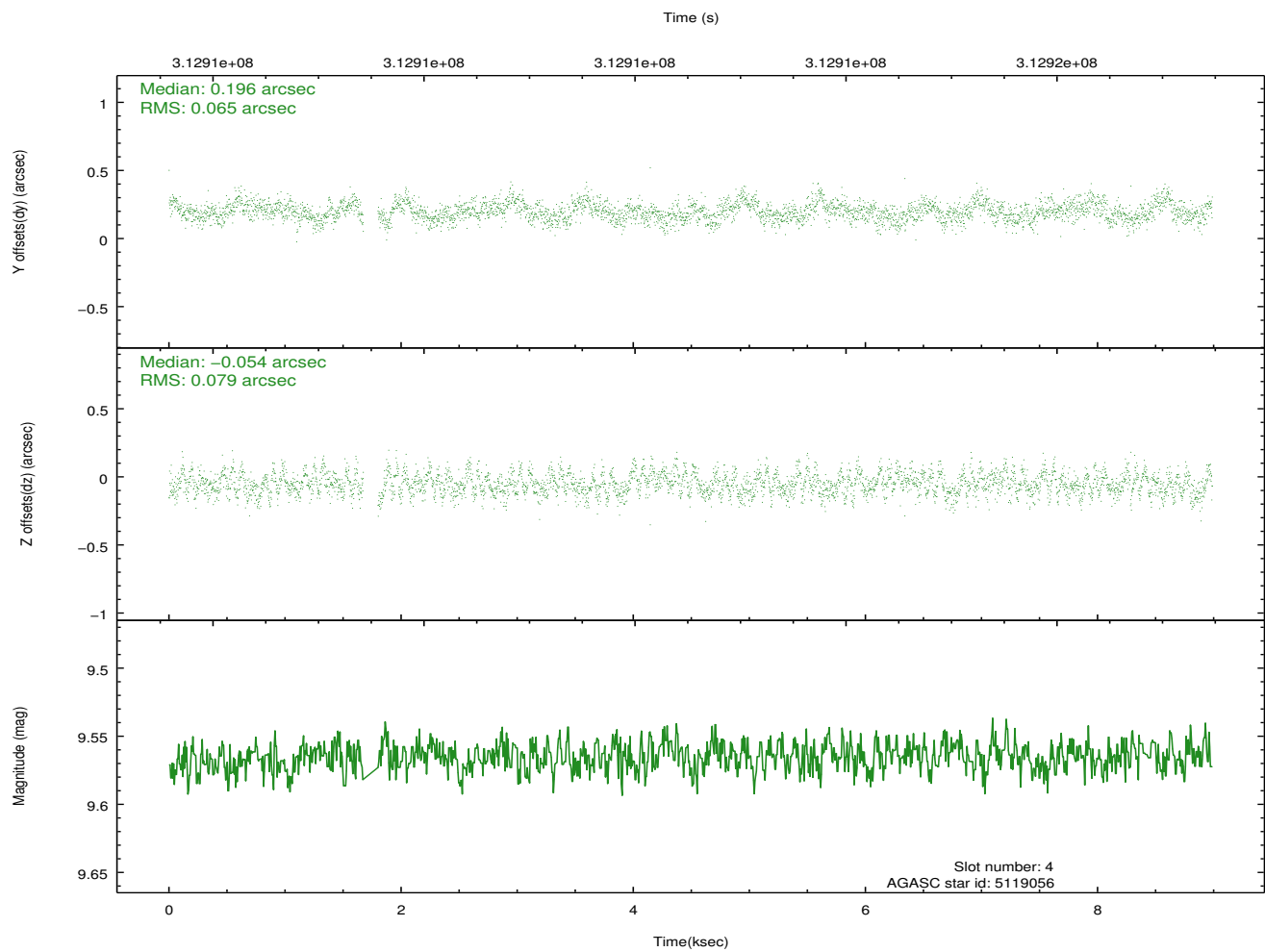
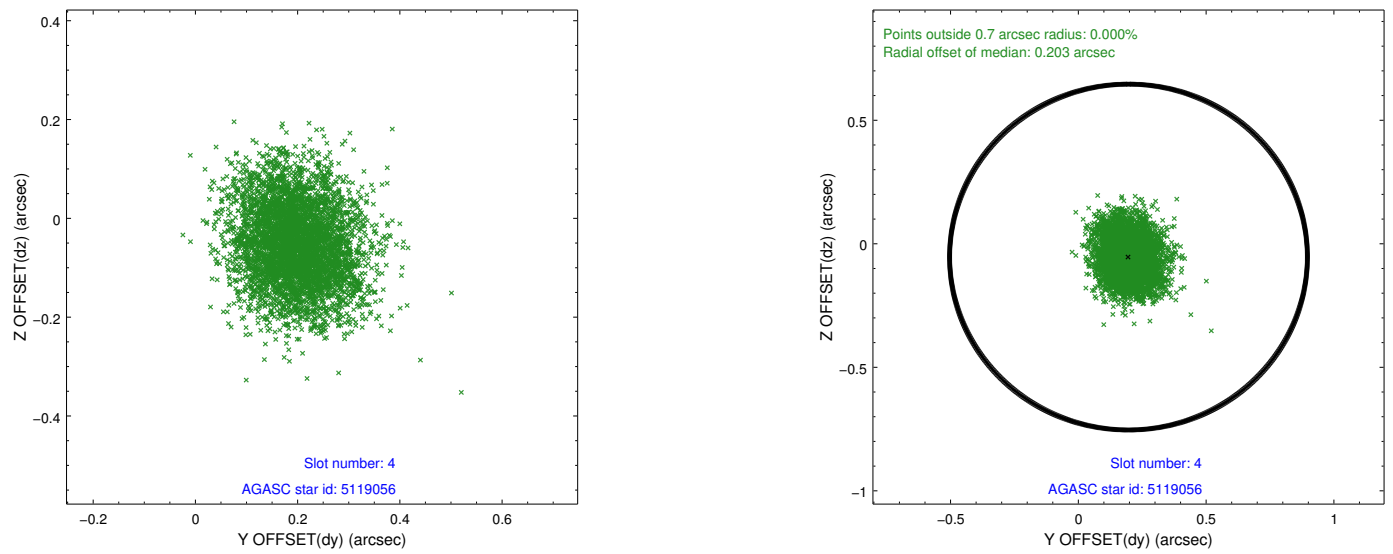
slot	status	id	mag	n_pts	med_dy	med_dz	dr1	dr2	ra	dec	mean_y	mean_z
0	FID	ACIS-I-1	7.24	2193	0.032	-0.004	0.007	0.011	0.000000	0.000000	925.29	-838.27
1	FID	ACIS-I-5	7.22	2193	-0.221	0.034	0.006	0.011	0.000000	0.000000	-1822.75	1058.94
2	FID	ACIS-I-6	7.24	2193	0.098	0.041	0.007	0.012	0.000000	0.000000	390.22	1704.15
3	GUIDE	5116480	9.30	4385	-0.181	0.131	0.089	0.147	36.624607	0.603451	-1668.68	-1348.09
4	GUIDE	5119056	9.56	4321	0.196	-0.054	0.108	0.174	36.799344	0.156256	-22.04	-1873.73
5	GUIDE	6032088	9.12	4379	0.136	-0.039	0.085	0.135	37.532714	0.102881	1789.92	56.14
6	GUIDE	6034024	9.70	4383	-0.105	0.020	0.112	0.186	37.505848	1.160303	-1228.52	2378.27
7	GUIDE	6042384	6.40	4384	-0.043	-0.057	0.061	0.104	37.688348	0.255749	1714.62	838.35

2.4 Star Slots

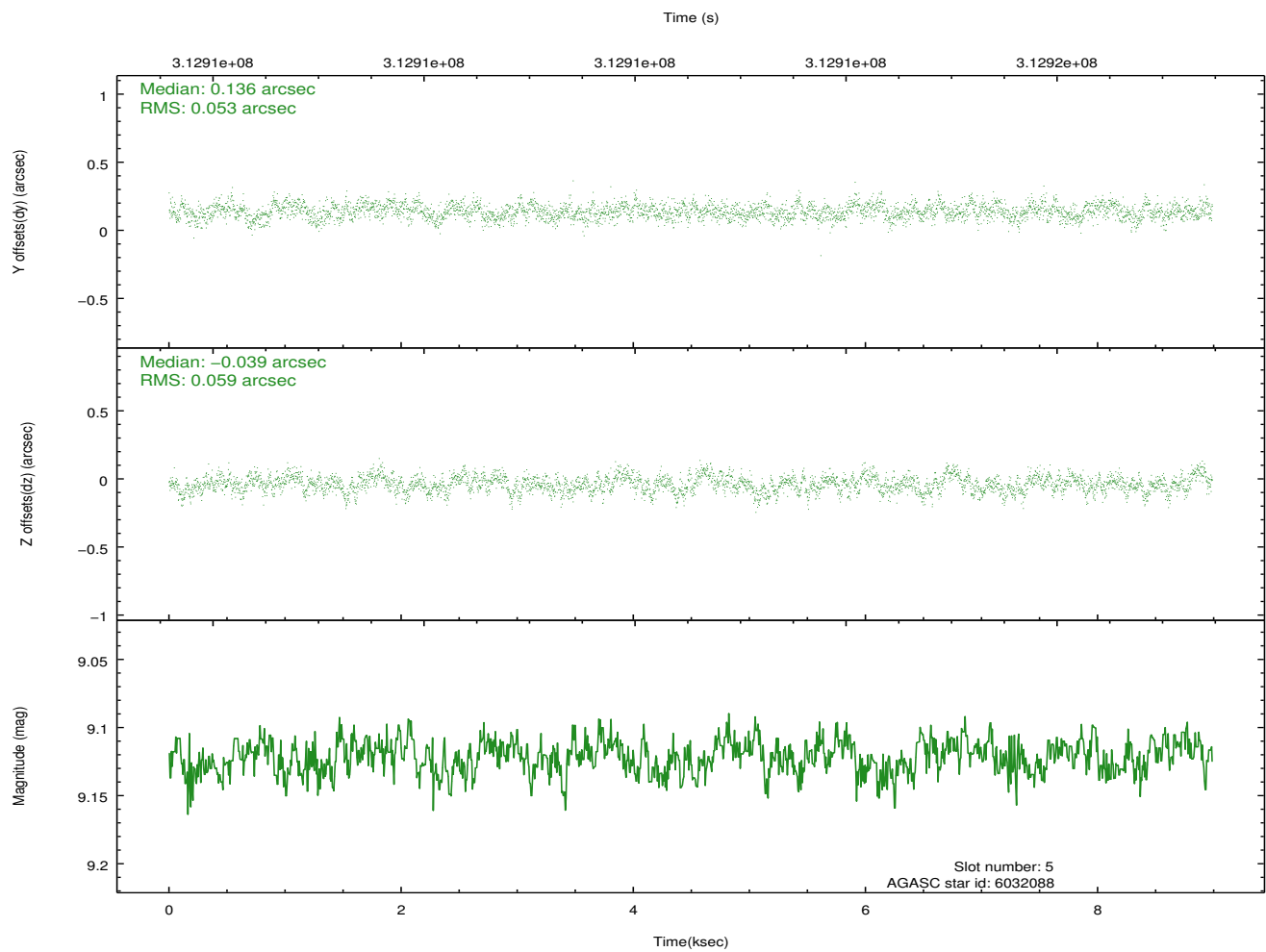
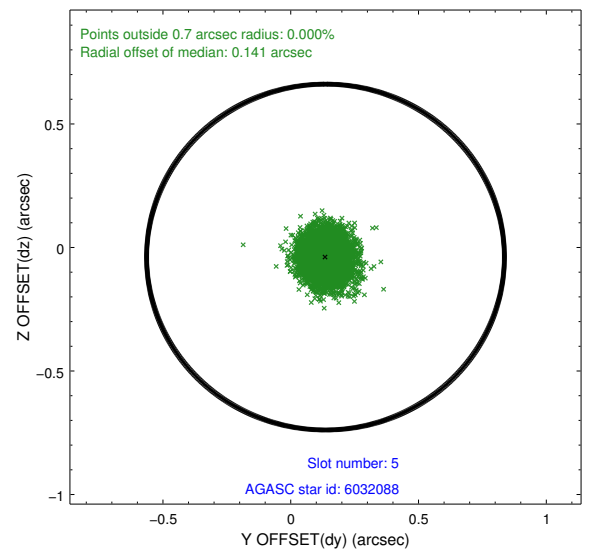
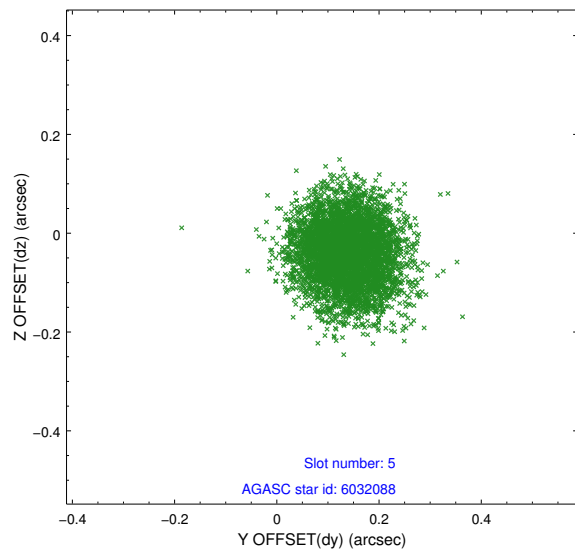
2.4.1 Slot 3



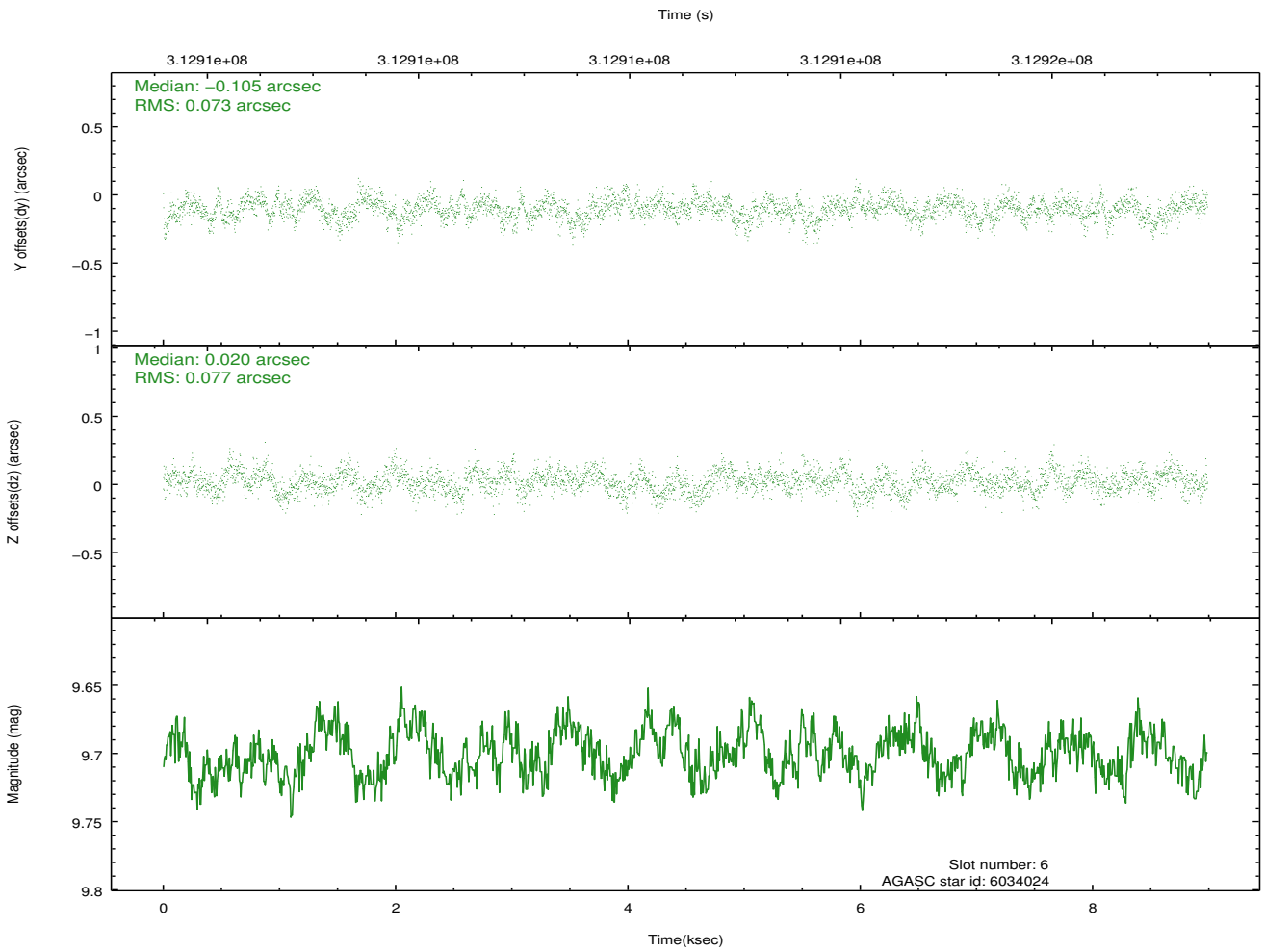
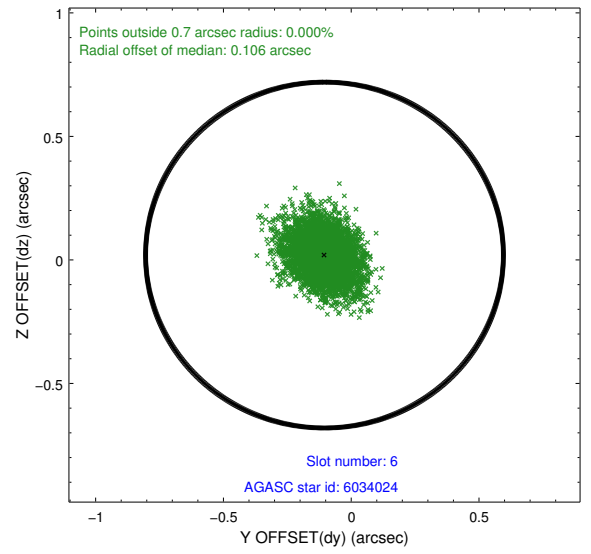
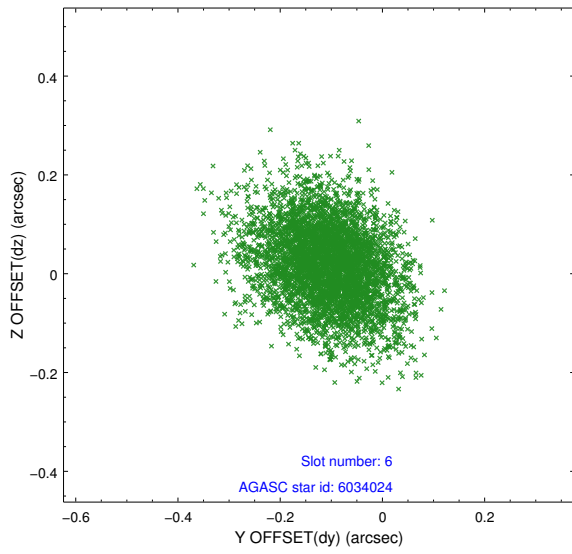
2.4.2 Slot 4



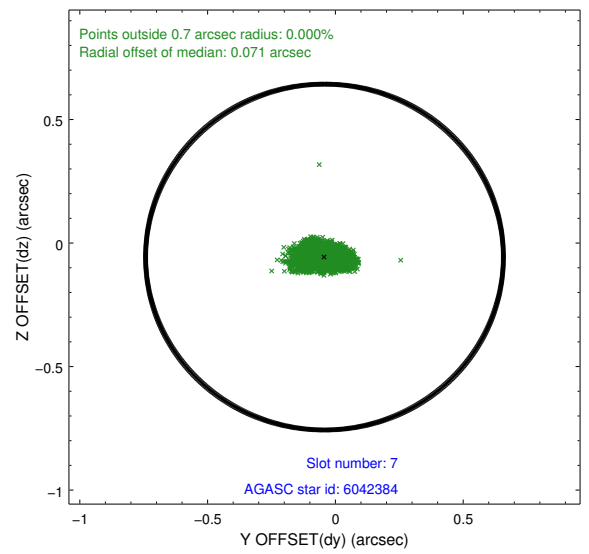
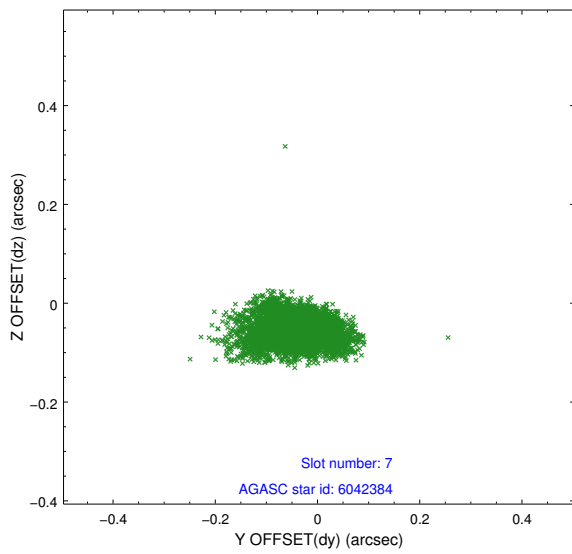
2.4.3 Slot 5



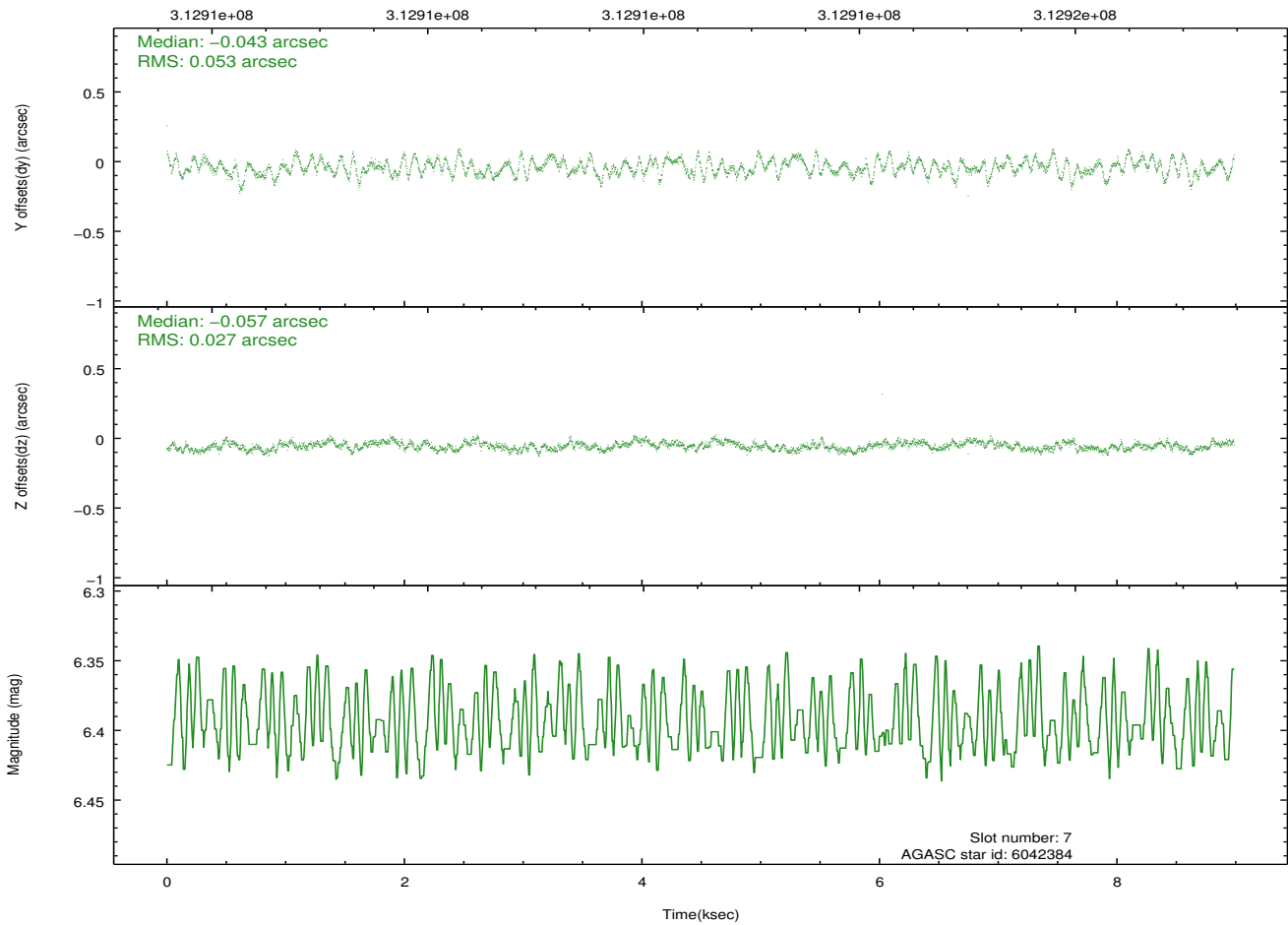
2.4.4 Slot 6



2.4.5 Slot 7

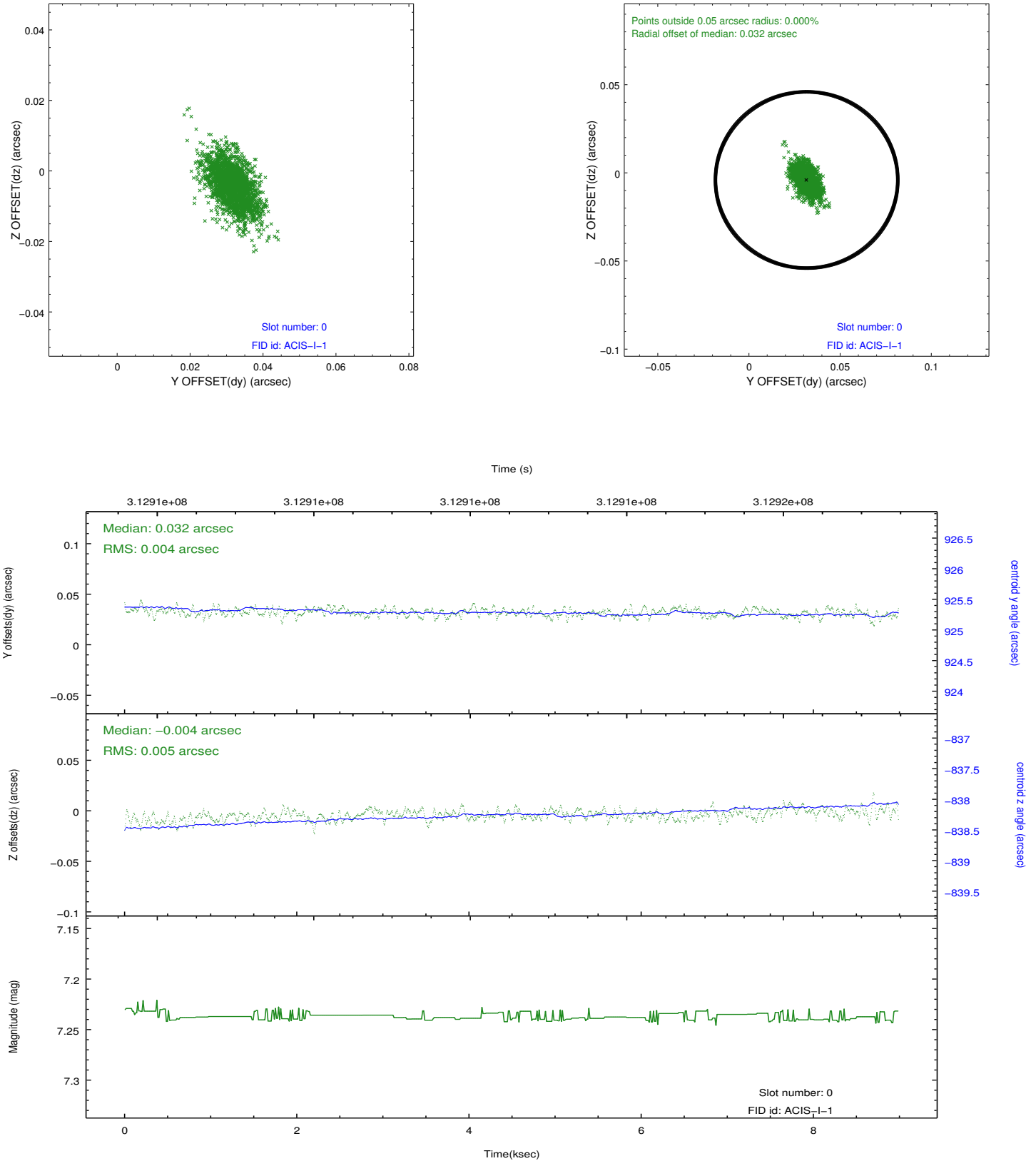


Time (s)

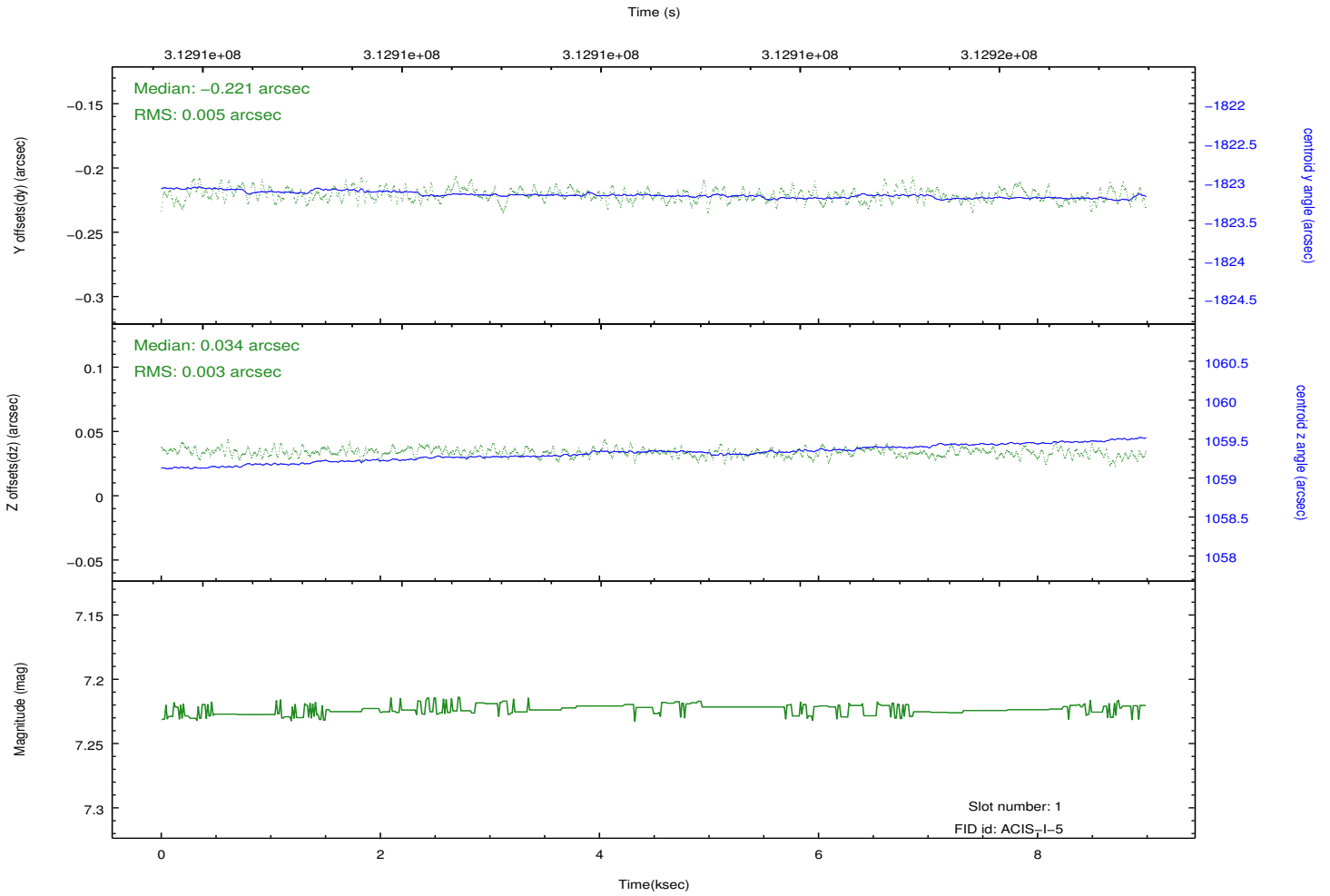
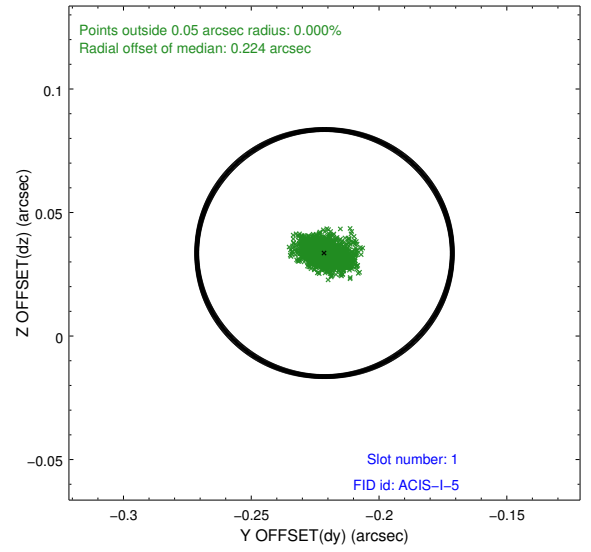
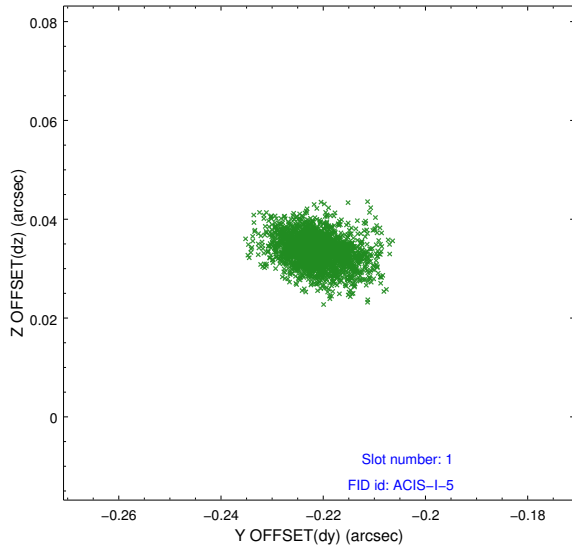


2.5 FID Slots

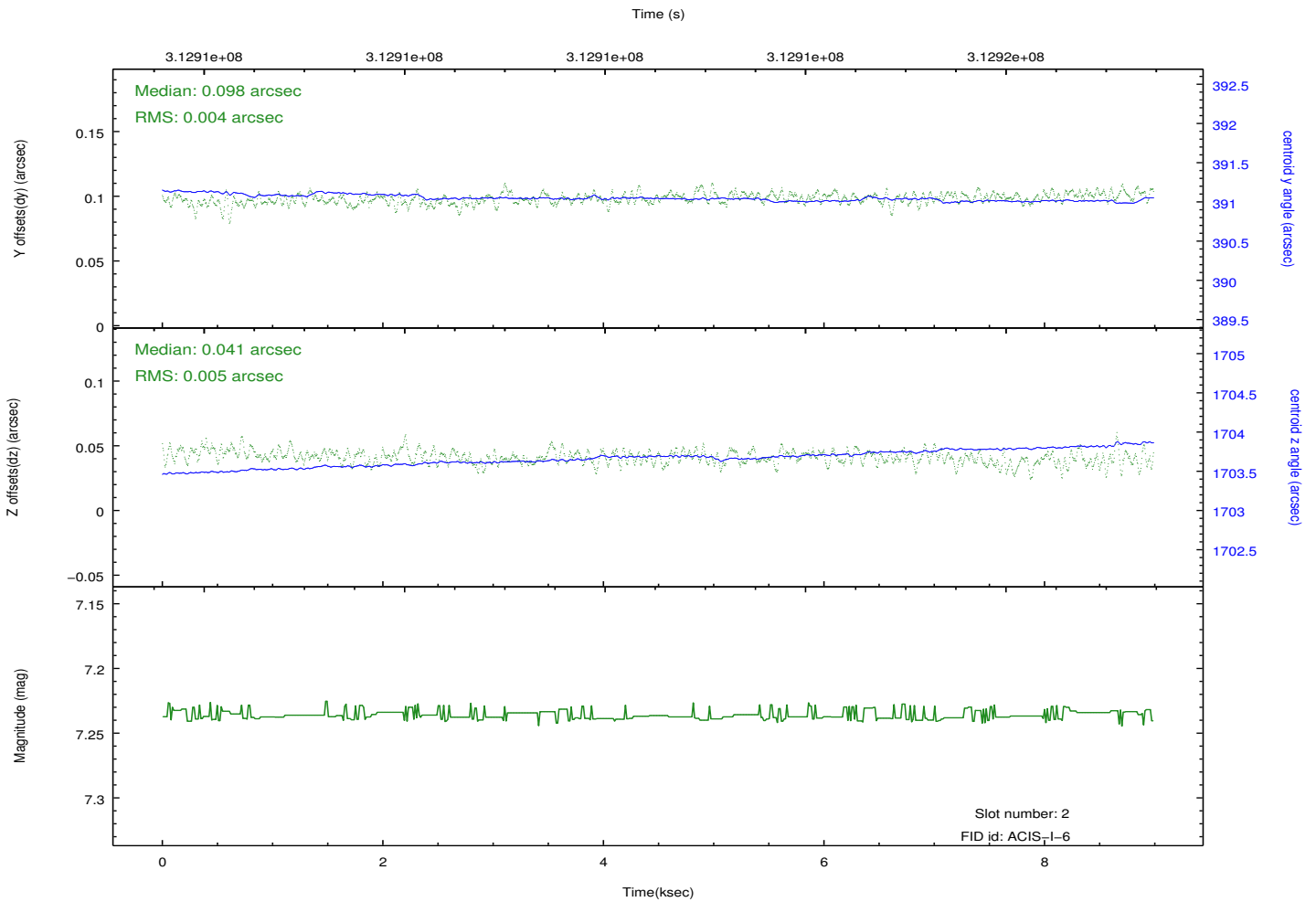
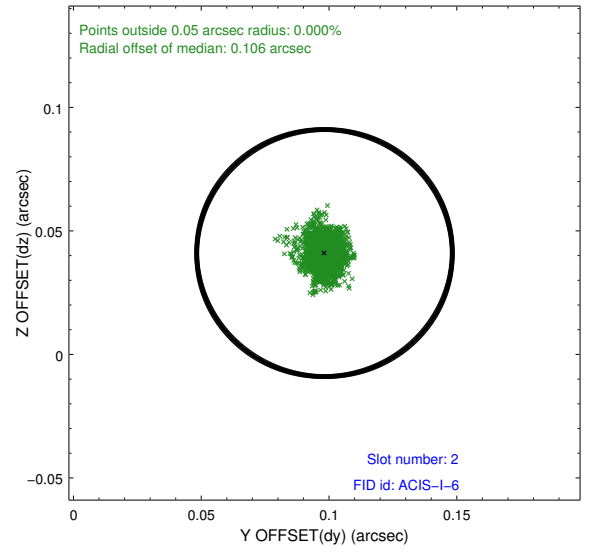
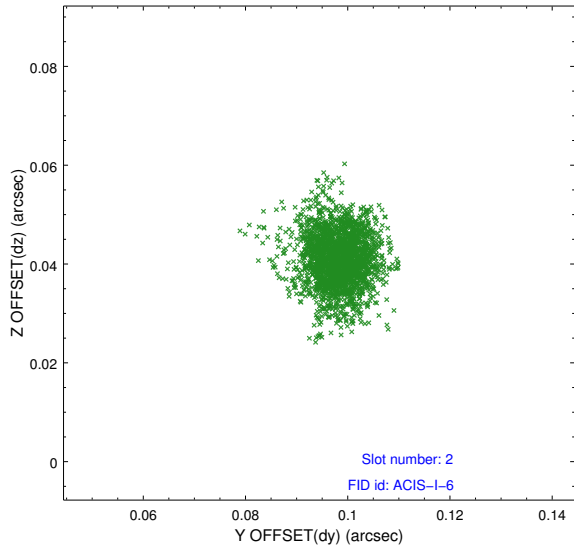
2.5.1 Slot 0



2.5.2 Slot 1



2.5.3 Slot 2



A Summary

A.1 Status

V&V Scientist	Jen Lauer
V&V Date (YYYY-MM-DD)	2012.05.07
V&V Edition	1
V&V Disposition and Status	OK
V&V Charge Time	8.57460006

A.2 Comments