

V&V Reference Report

L2 ASCDS Version : 8.4.5

Observation 87 - L2 Version 6
Chandra X-Ray Center

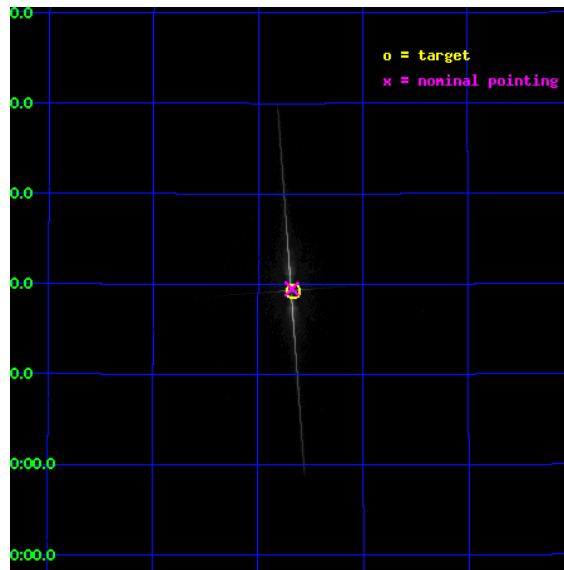
L2 Processing Date : Aug 26 2012

Contents

1	Front	2
2	OBI	3
2.1	OBI	3
2.1.1	Images	3
2.1.2	Parameters	4
2.1.3	Events	4
2.2	Compared Parameters	5
2.3	Aspect	6
2.4	Star Slots	9
2.4.1	Slot 3	9
2.4.2	Slot 4	10
2.4.3	Slot 5	11
2.4.4	Slot 6	12
2.4.5	Slot 7	13
2.5	FID Slots	14
2.5.1	Slot 0	14
2.5.2	Slot 1	15
2.5.3	Slot 2	16
3	Gratings	17
3.1	LETG Arm	17
A	Summary	19
A.1	Status	19
A.2	Comments	19

1 Front

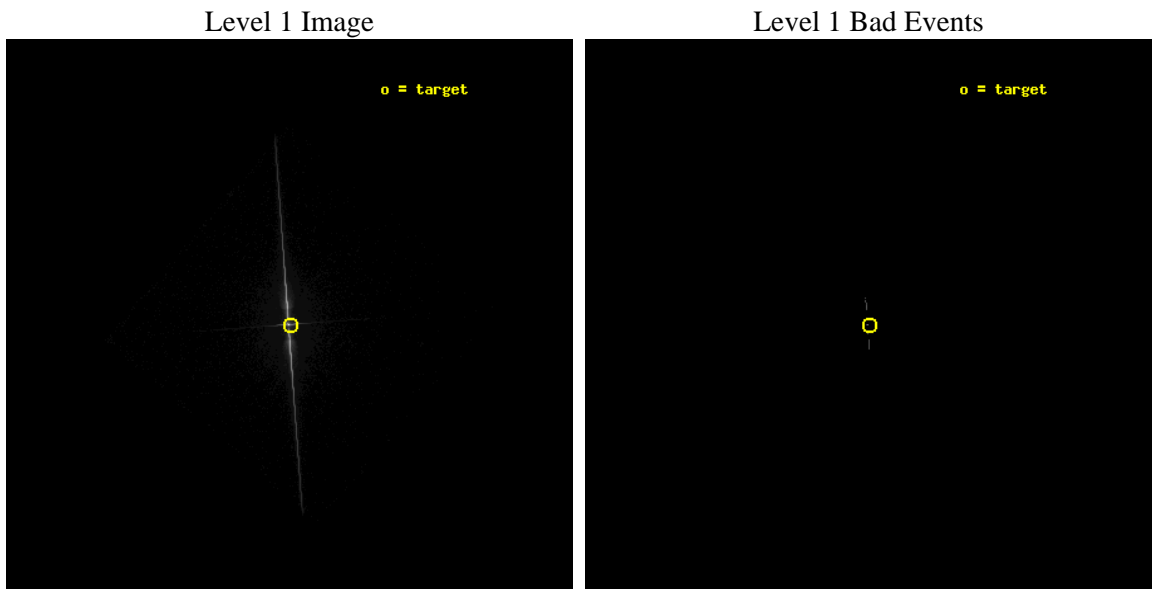
seq_num	400000	Sequence number
obs_id	87	Observation id
title	CHEMISTRY OF INTERSTELLAR DUST	Proposal title
observer	Dr. Peter Predehl	Principal investigator
object	CYG X-2	Source name
ra_targ	326.166667	Observer's specified target RA [deg]
dec_targ	38.320556	Observer's specified target Dec [deg]
ra_nom	326.1693866199	Nominal RA [deg]
dec_nom	38.324589973449	Nominal Dec [deg]
roll_nom	85.560781413174	Nominal Roll [deg]
revision	6	Processing version of data
ontime	30157.551106468	[s]
livetime	29757.146361695	Ontime multiplied by DTCOR
l2events	4013988	Number of level 2 events



2 OBI

2.1 OBI

2.1.1 Images



2.1.2 Parameters

obi_num	0	Obi number	sched_exp_time	30000.000000	[s] Scheduled observation exposure time
ascdsver	8.4.5	Processing system revision	ontime	30157.551106468	[s]
caldbver	4.5.1.1	 	l1events	4671995	Number of level 1 events
date	2012-08-25T21:42:43	Date and time of file creation			
revision	6	Processing version of data			

2.1.3 Events

Level 1 Events

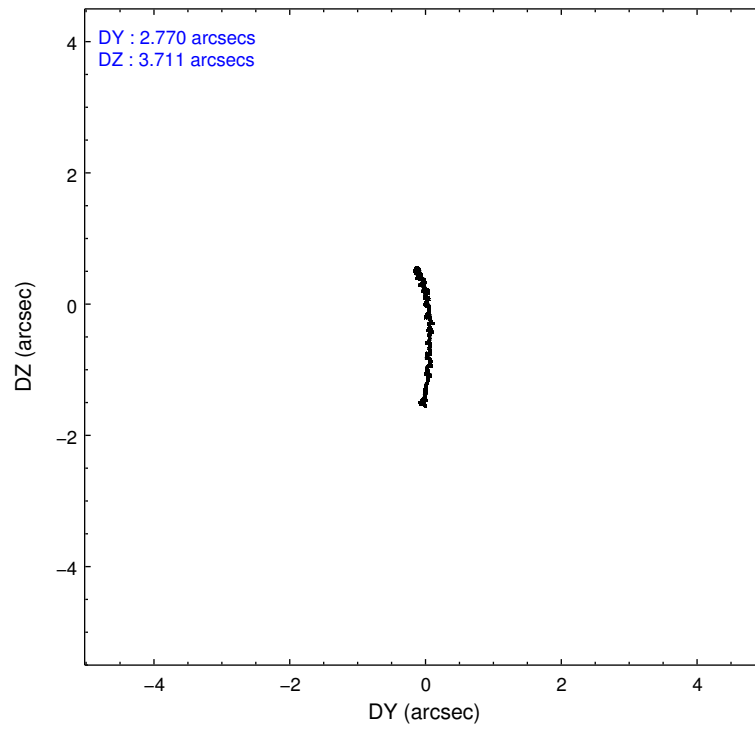
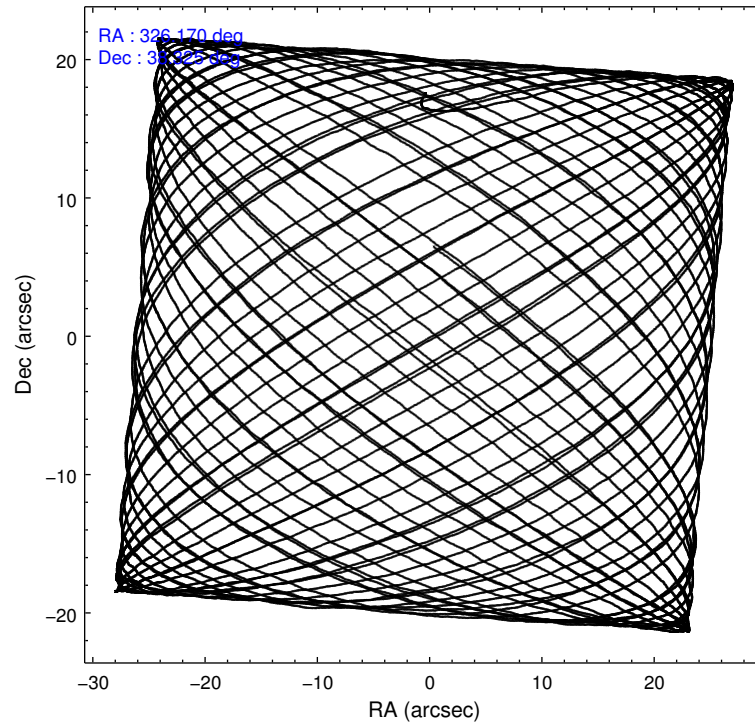
	segment 0
level 1 events	4671995
rejected events	9824
rejected %	0%

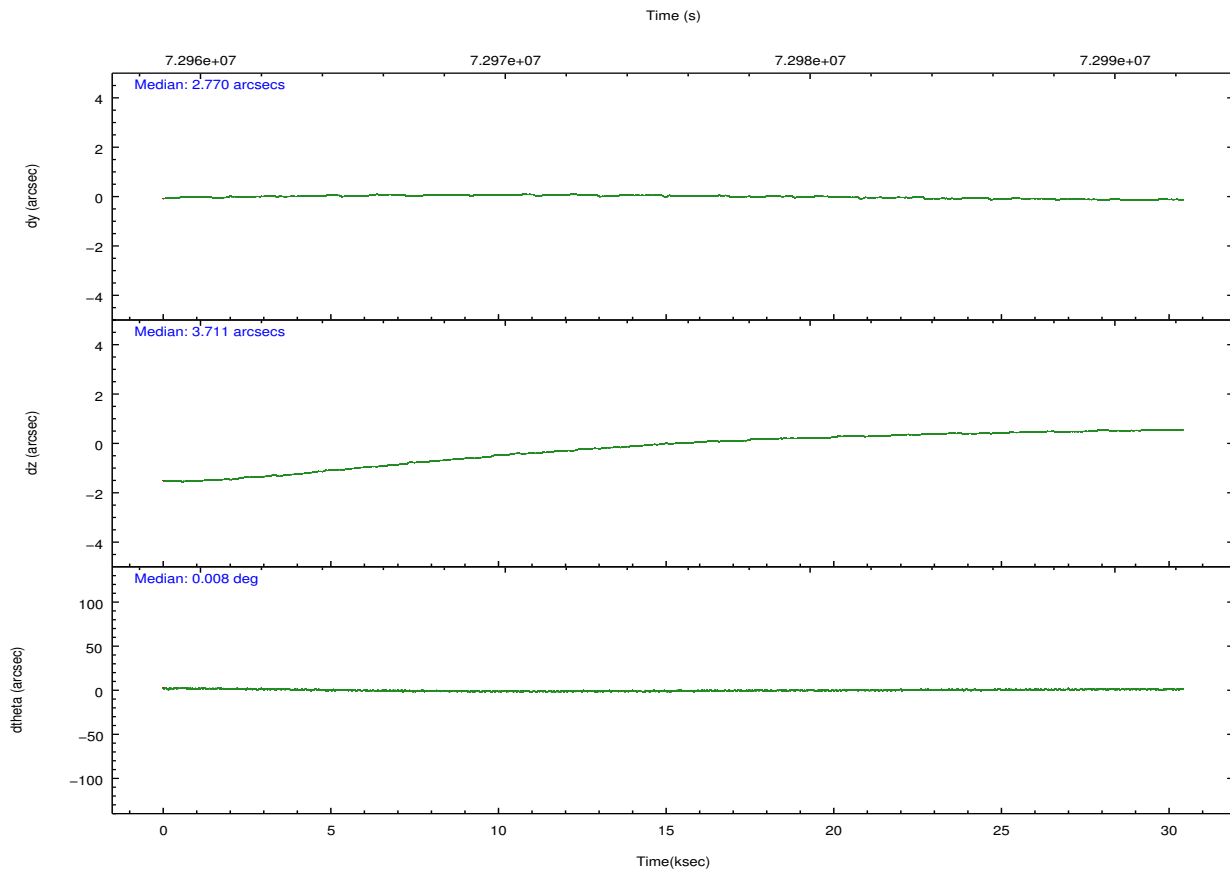
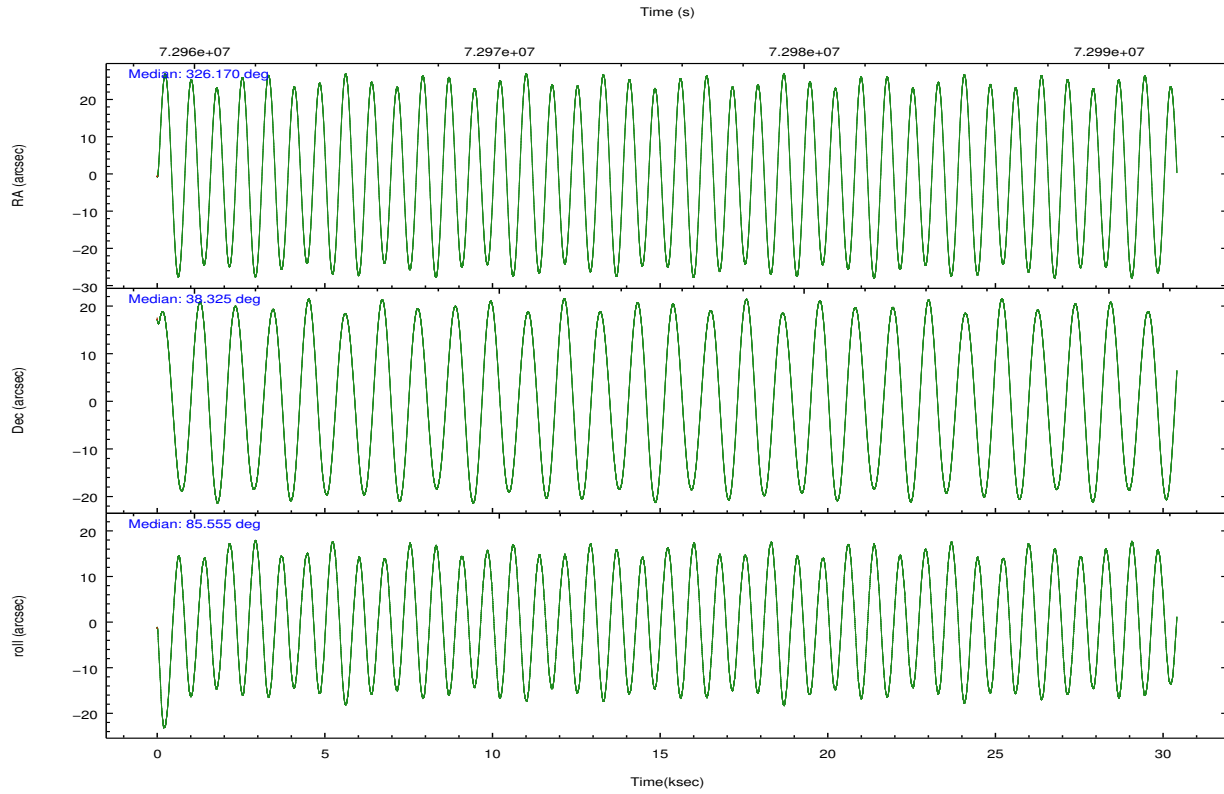
2.2 Compared Parameters

Parameter	Planned	Actual
Instrument	HRC	HRC
Detector	HRC-I	HRC-I
Grating	LETG	LETG
Data mode	OBSERVING	OBSERVING
Observation mode	POINTING	POINTING
[deg] Pointing RA	326.184711	326.169386619904
[deg] Pointing Dec	38.300085	38.32458997344875
[deg] Pointing Roll	85.646770	85.56078141317393
[mm] SIM focus pos	-0.940293	-0.9417039235429384
[mm] SIM defocus	0.1	0.0985886971159361
[mm] SIM translation stage pos	122.985494	122.9801900299027
[mm] SIM translation stage offset	4	4.005298861698833
[s] Observation start time (MET)	72960709.184000	72959566.012547
Observation start date	2000-04-24T10:50:45	2000-04-24T10:32:46
[s] Observation end time (MET)	72990709.184000	72991497.838718
Observation end date	2000-04-24T19:10:45	2000-04-24T19:24:57

Parameter	Planned	Actual
Obspar format version number	7	7
Obspar file type	PREDICTED	ACTUAL
Obspar update status	NONE	UPDATED

2.3 Aspect



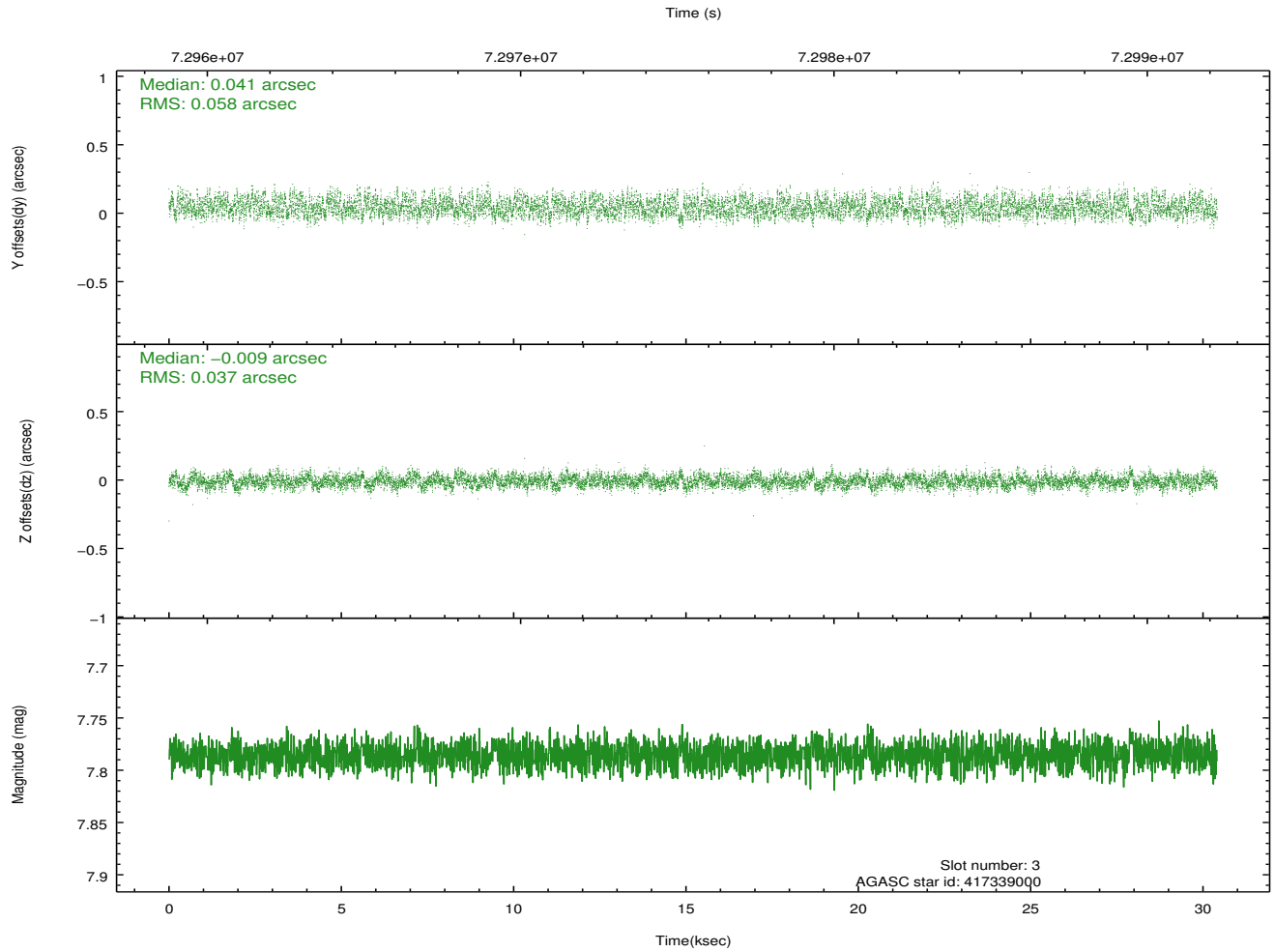
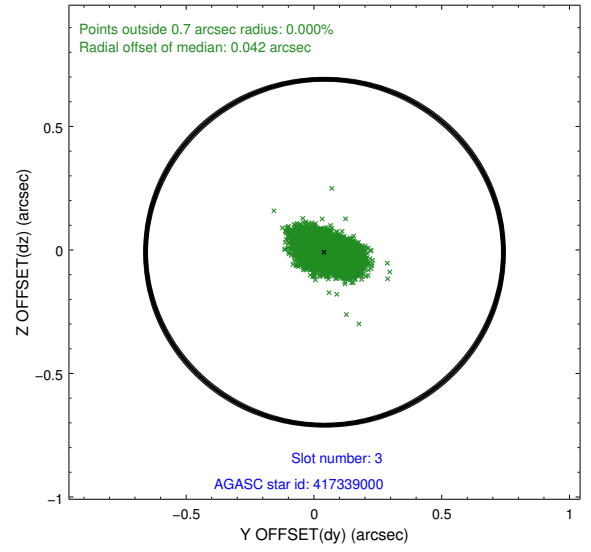
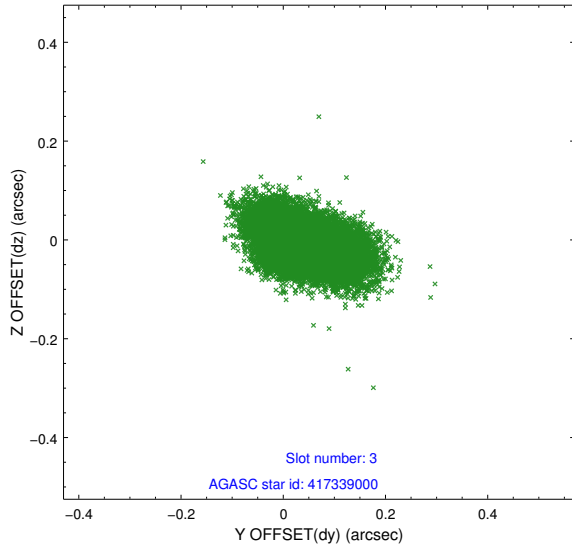


Slot Statistics

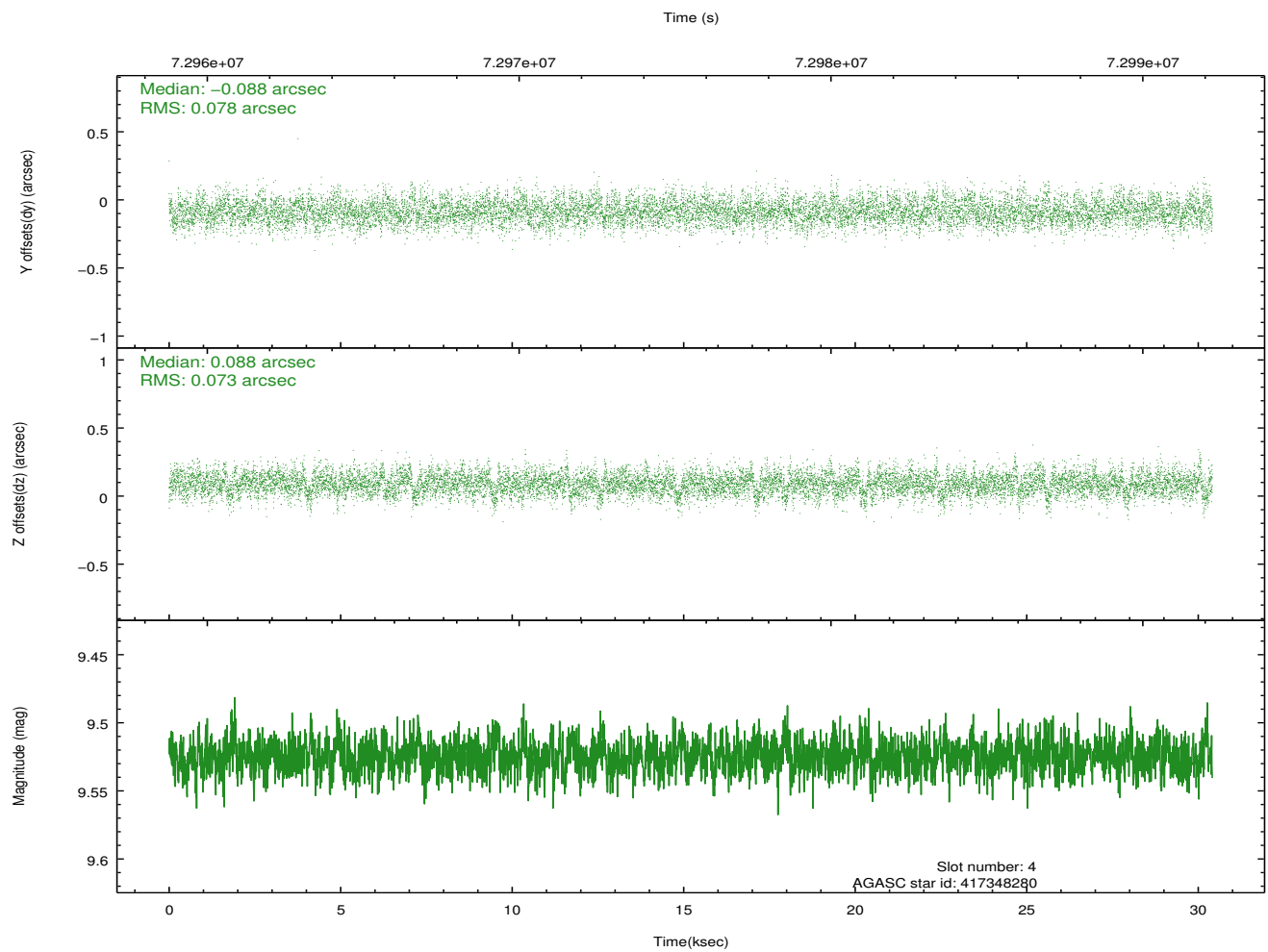
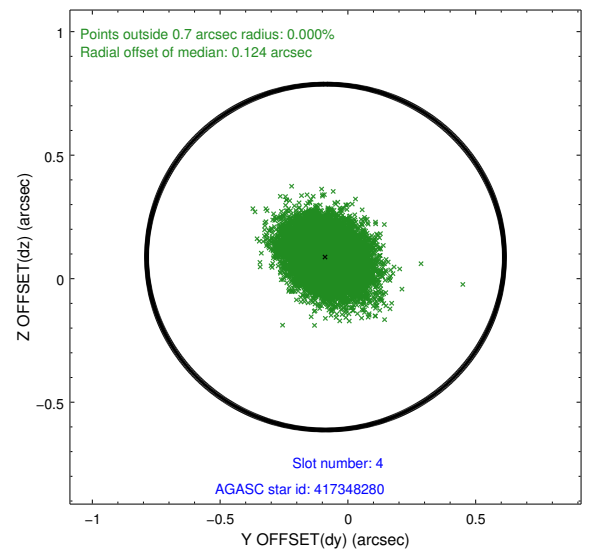
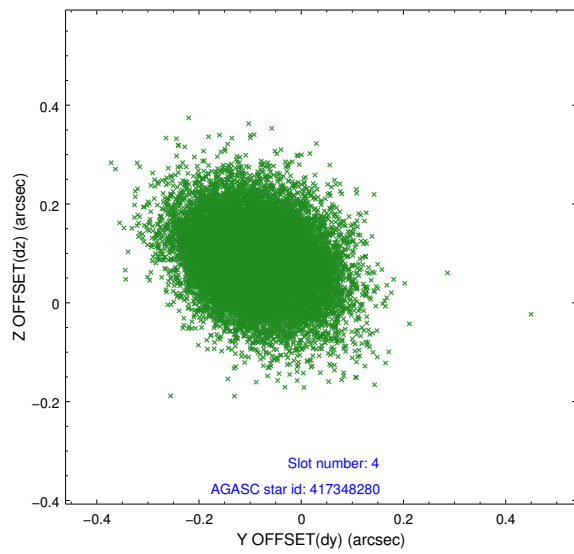
slot	status	id	mag	n_pts	med_dy	med_dz	dr1	dr2	ra	dec	mean_y	mean_z
0	FID	HRC-I-2	7.00	7419	0.007	0.010	0.014	0.045	0.000000	0.000000	854.36	-1210.50
1	FID	HRC-I-3	7.04	7419	0.012	-0.066	0.008	0.016	0.000000	0.000000	-1186.69	1095.40
2	FID	HRC-I-4	6.97	7419	0.099	-0.029	0.017	0.029	0.000000	0.000000	1284.43	1093.39
3	GUIDE	417339000	7.79	14834	0.041	-0.009	0.072	0.119	325.733777	37.904925	-1512.92	1169.70
4	GUIDE	417348280	9.52	14830	-0.088	0.088	0.113	0.185	327.005116	38.901247	2342.50	-2126.07
5	GUIDE	417343224	9.26	14830	0.095	-0.138	0.109	0.172	325.357905	37.770468	-2069.56	2202.11
6	GUIDE	417334592	9.95	14828	-0.111	-0.055	0.118	0.204	326.078924	38.883627	2071.82	455.80
7	GUIDE	417347416	9.95	14817	0.059	0.114	0.097	0.159	326.602243	38.095149	-643.11	-1234.83

2.4 Star Slots

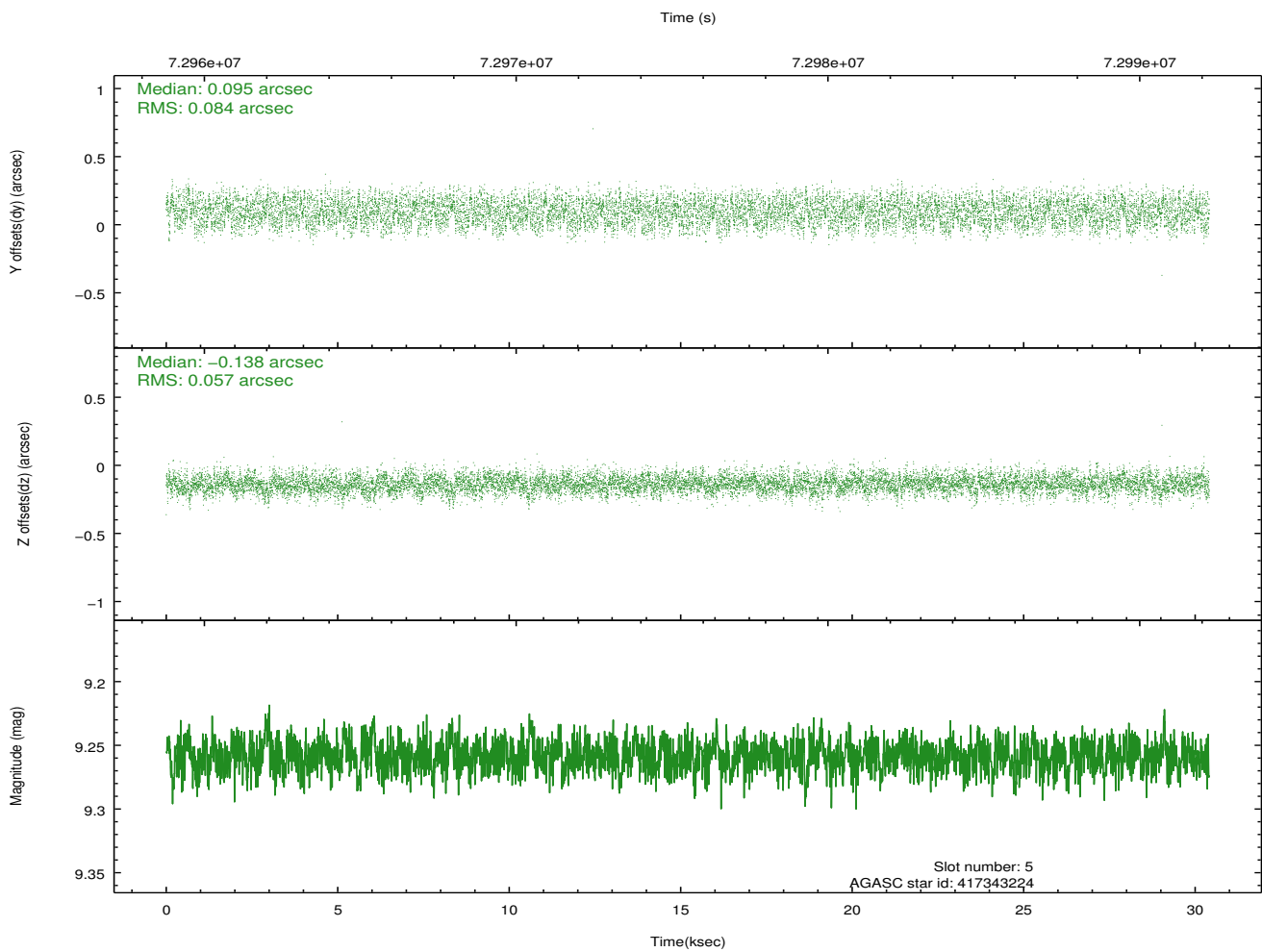
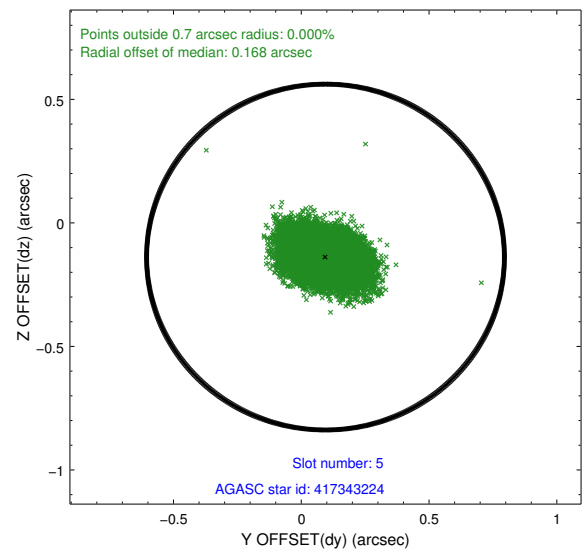
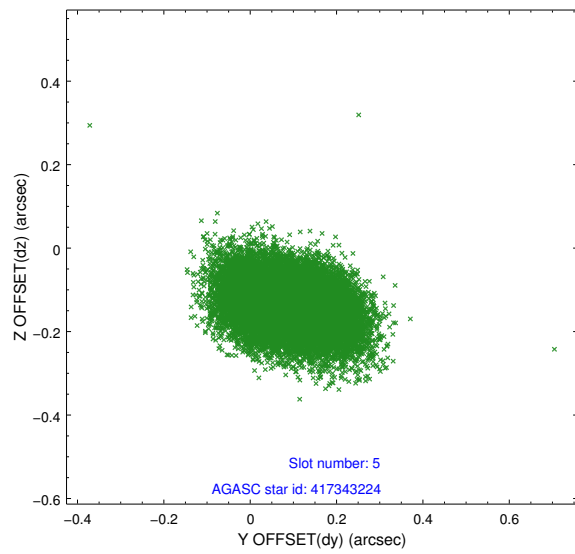
2.4.1 Slot 3



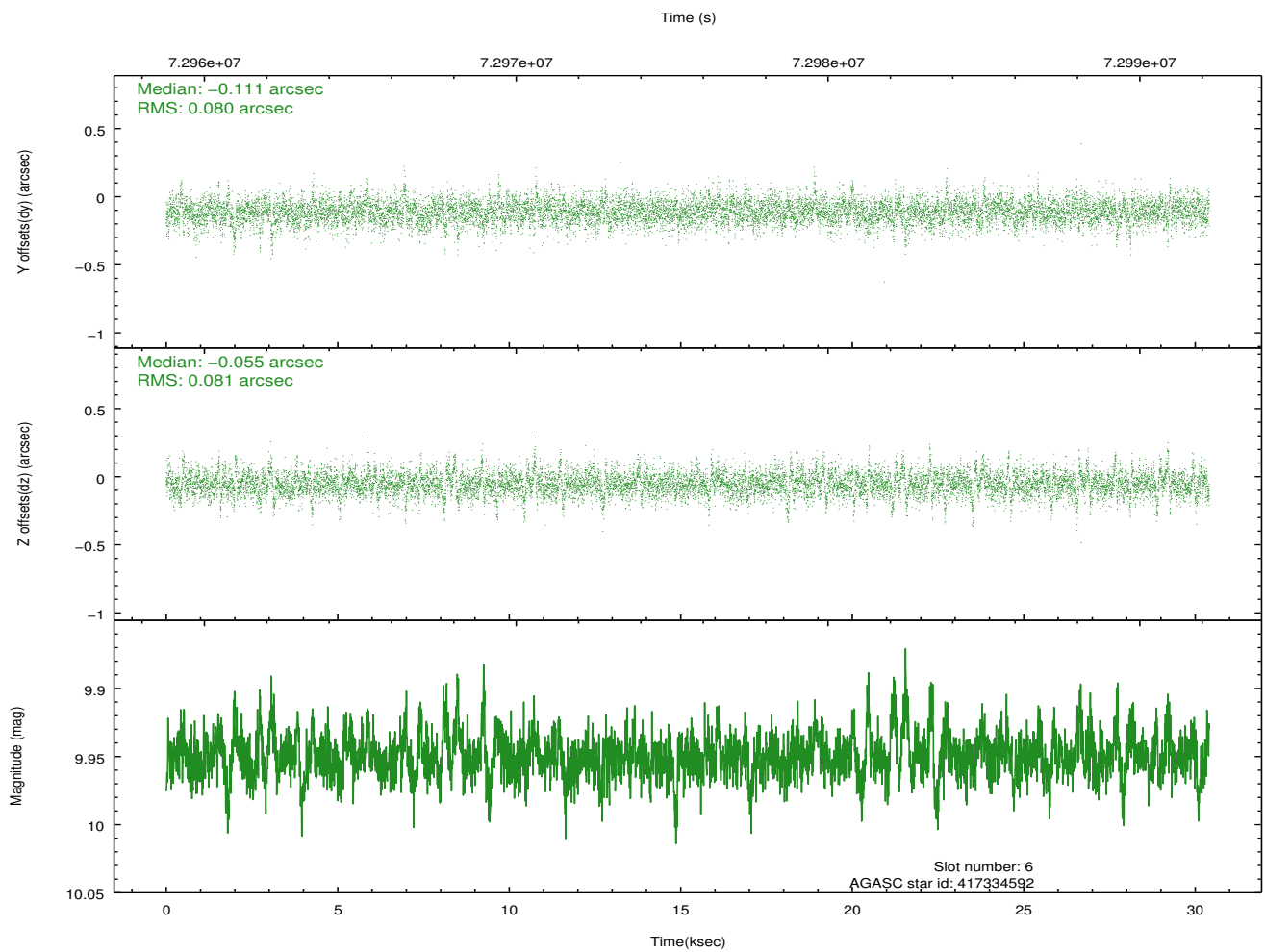
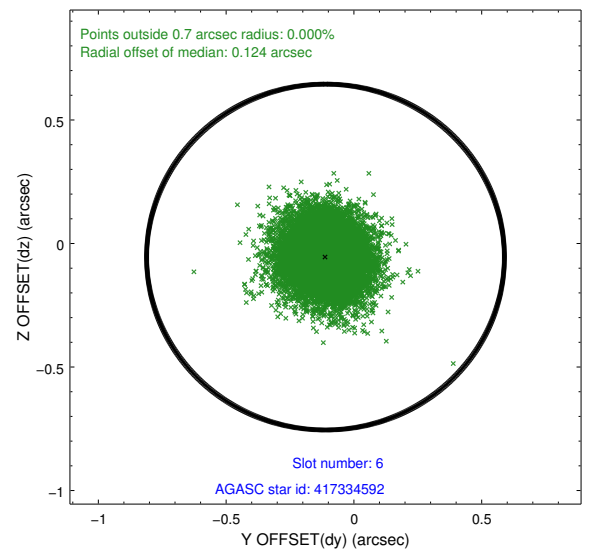
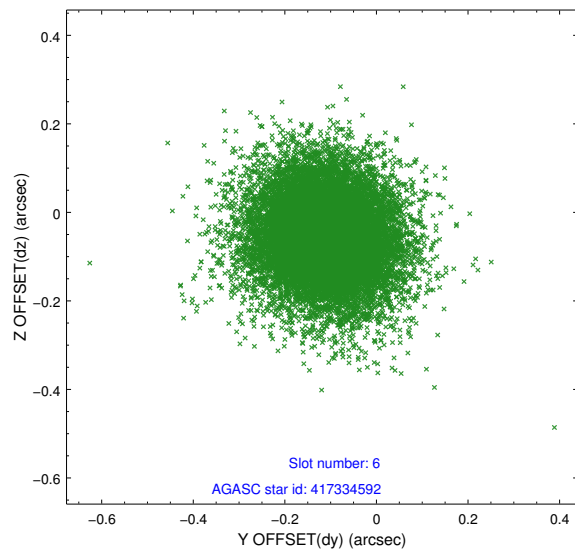
2.4.2 Slot 4



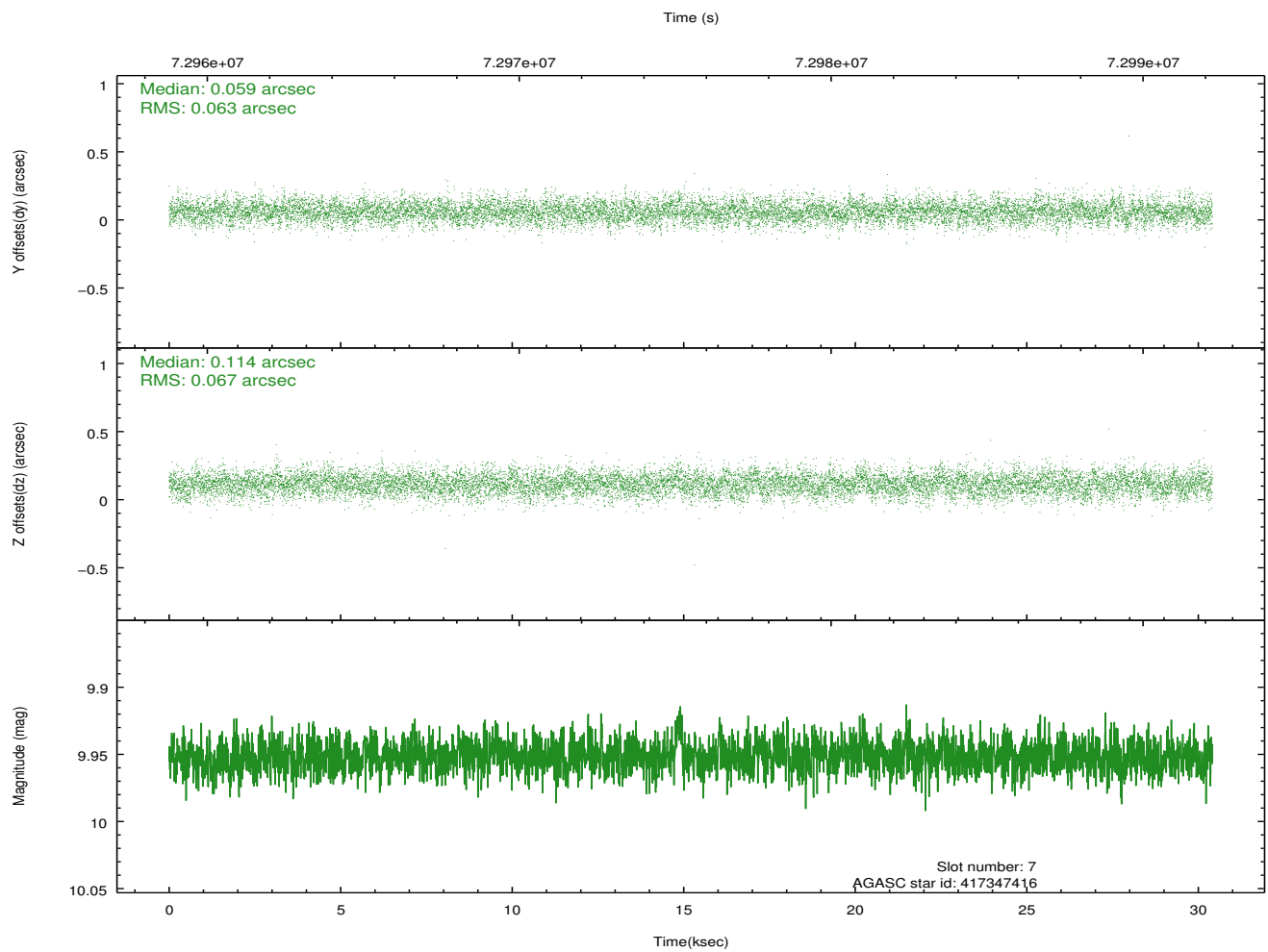
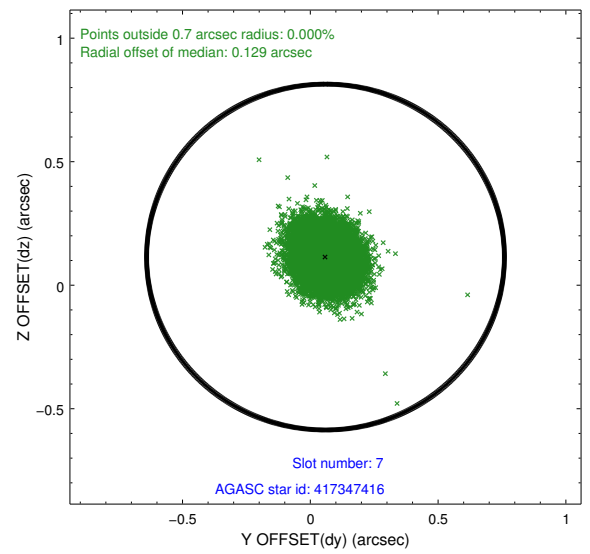
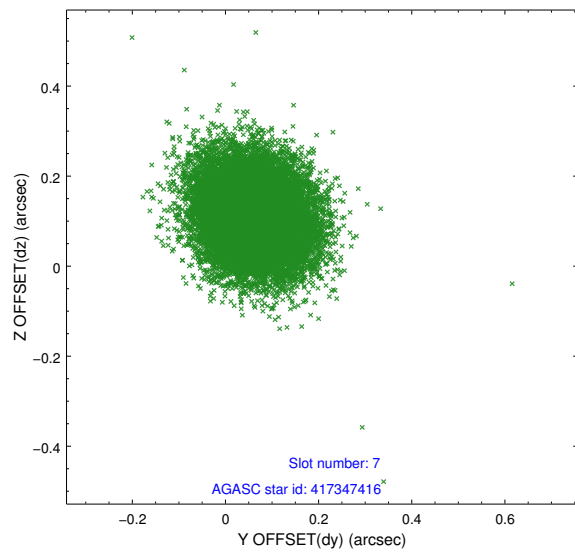
2.4.3 Slot 5



2.4.4 Slot 6

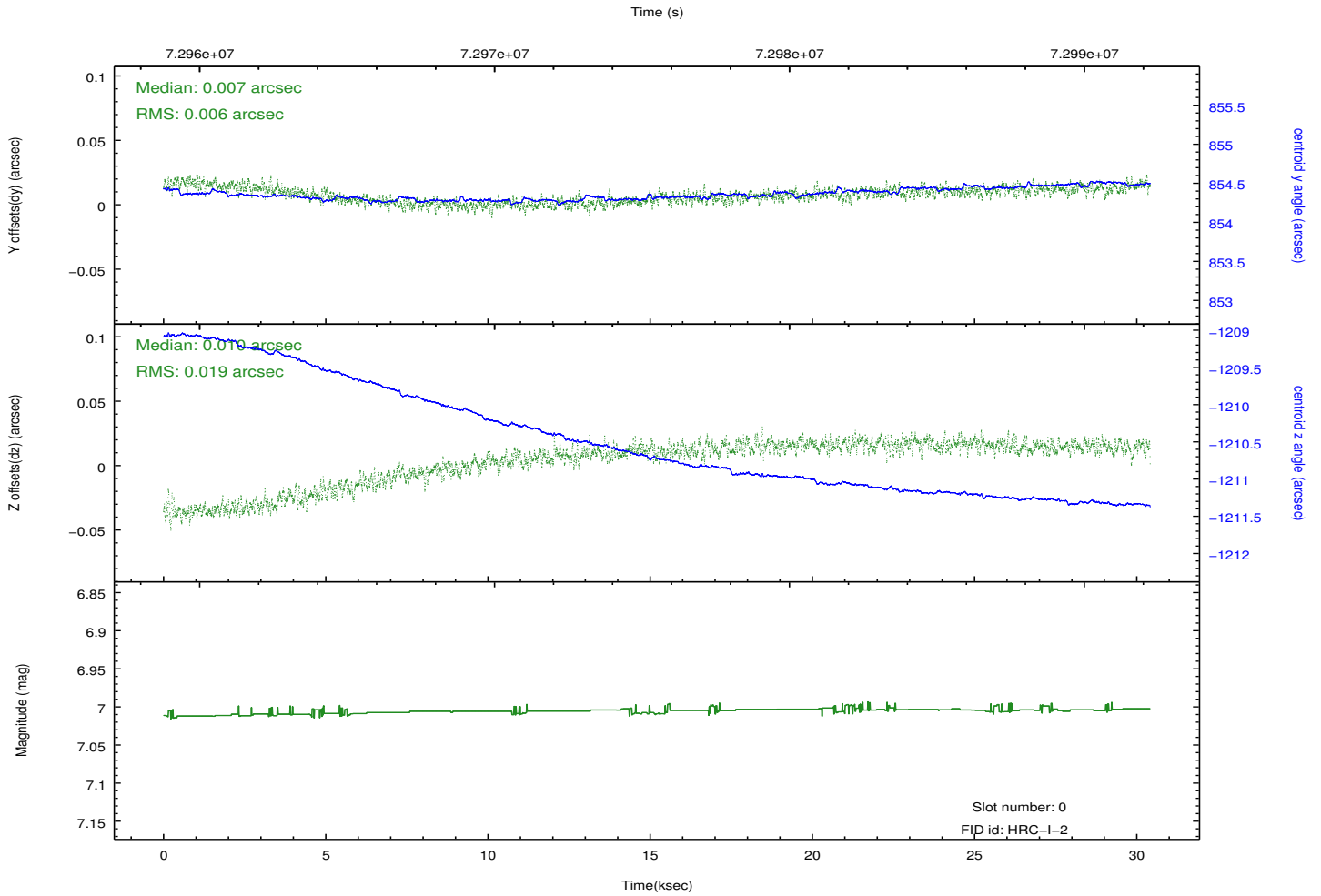
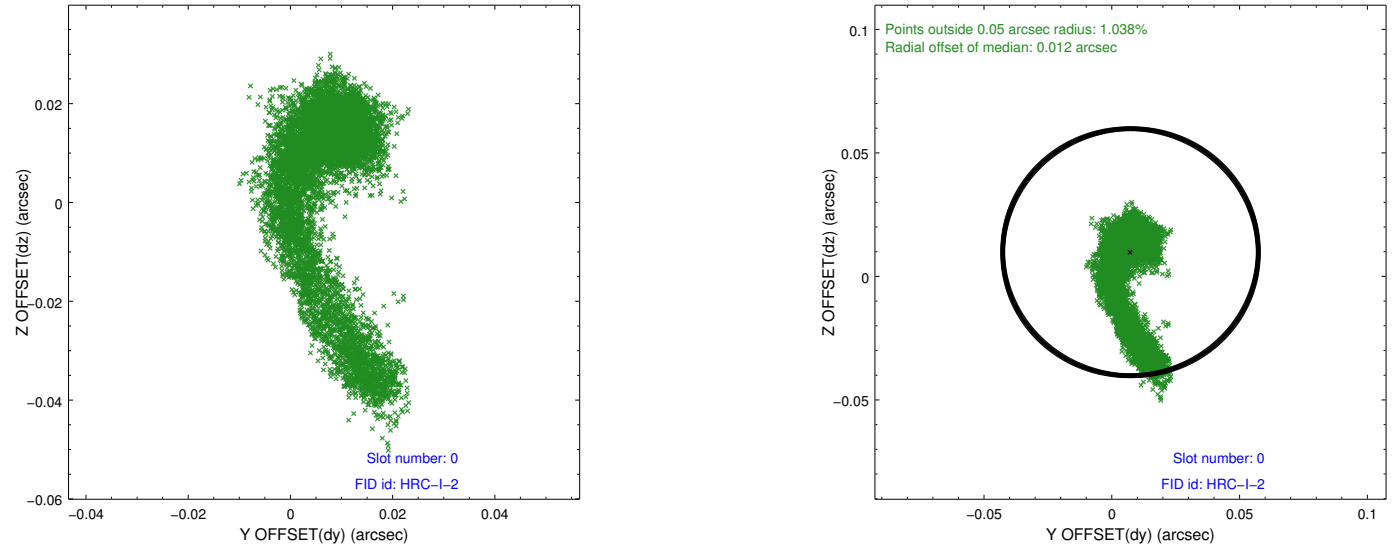


2.4.5 Slot 7

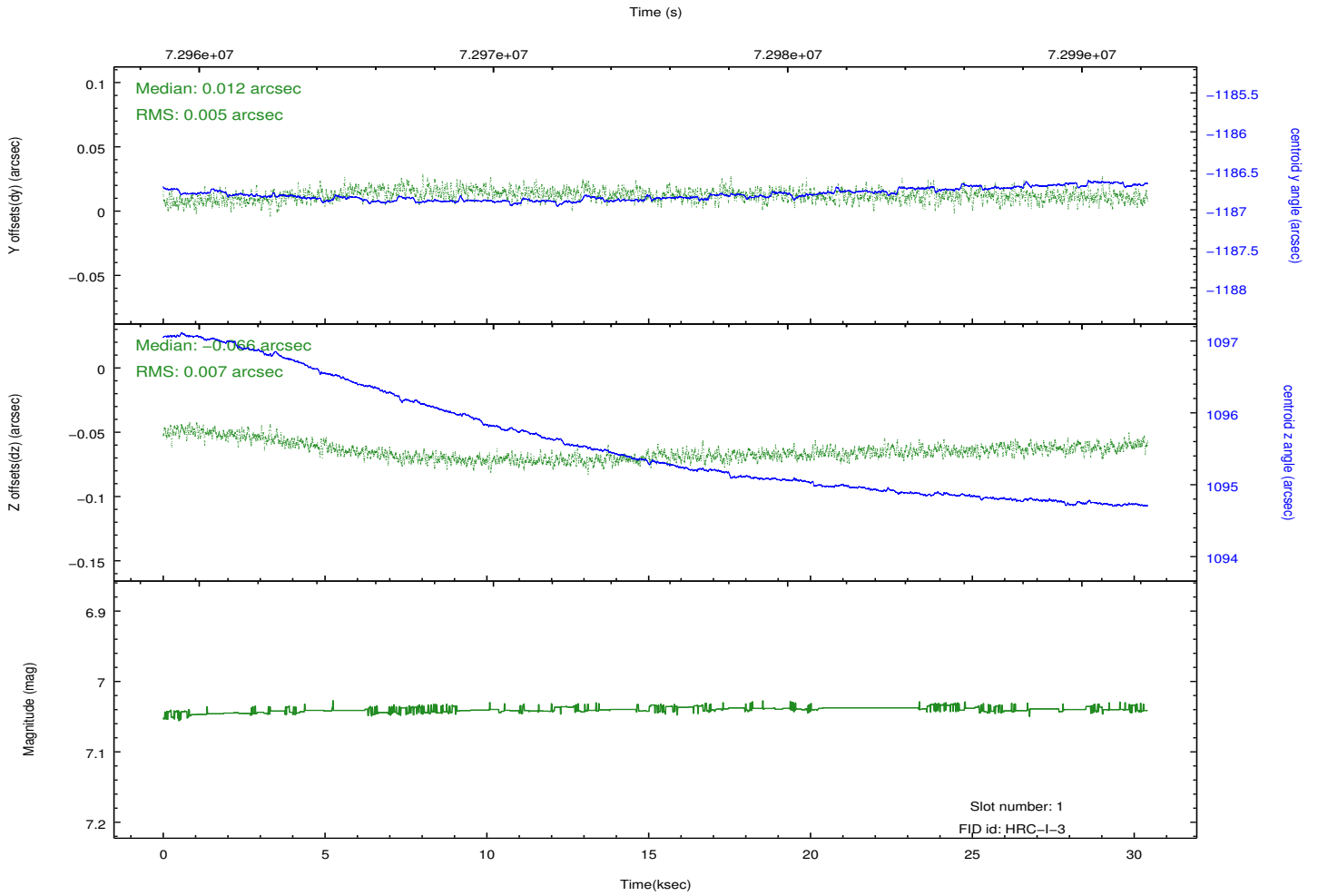
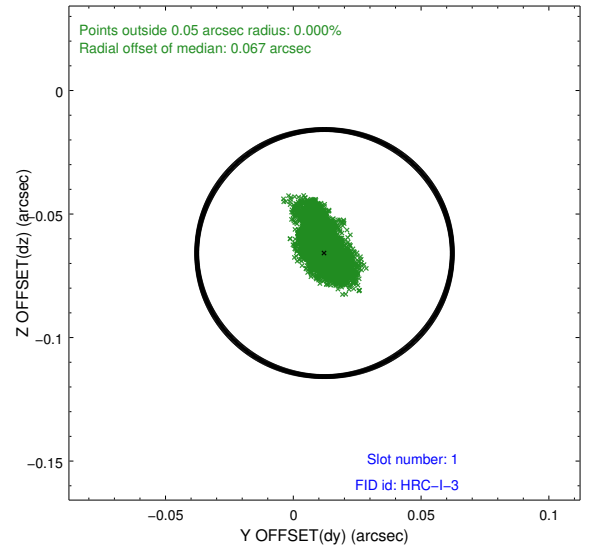
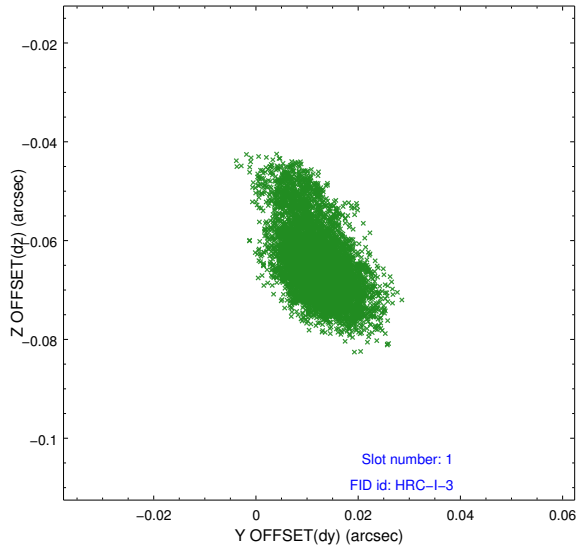


2.5 FID Slots

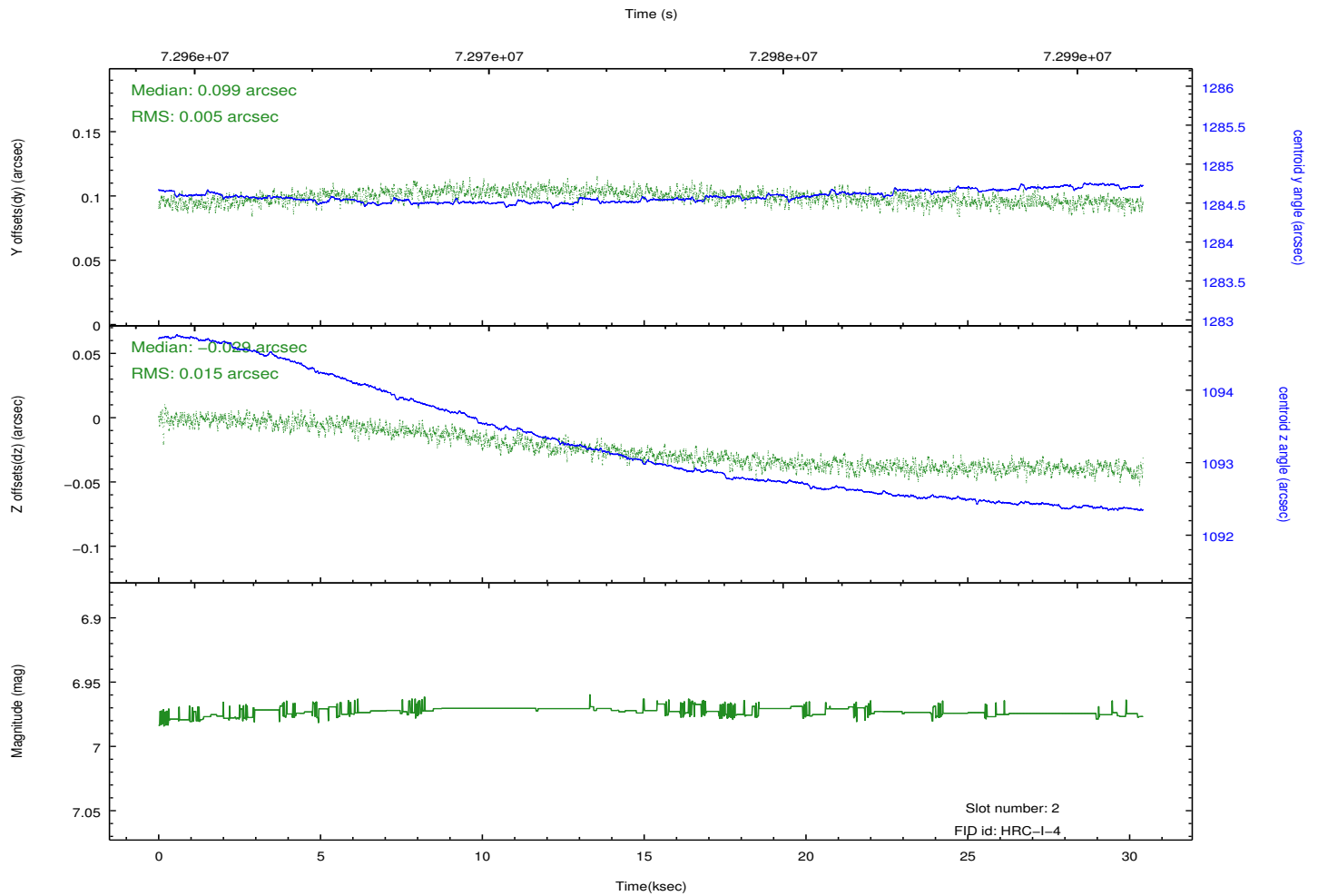
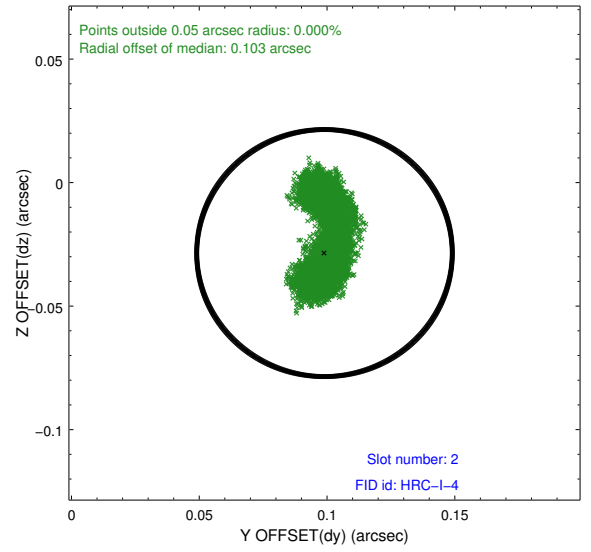
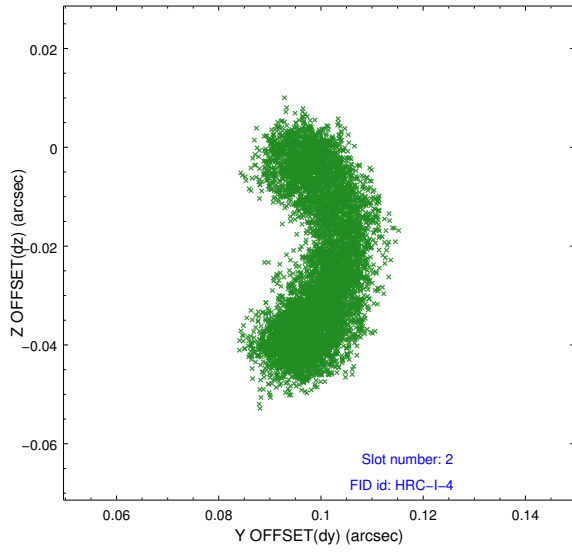
2.5.1 Slot 0



2.5.2 Slot 1

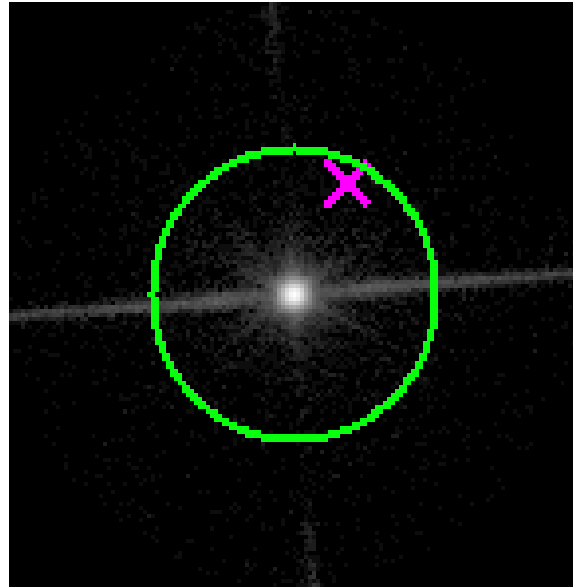


2.5.3 Slot 2



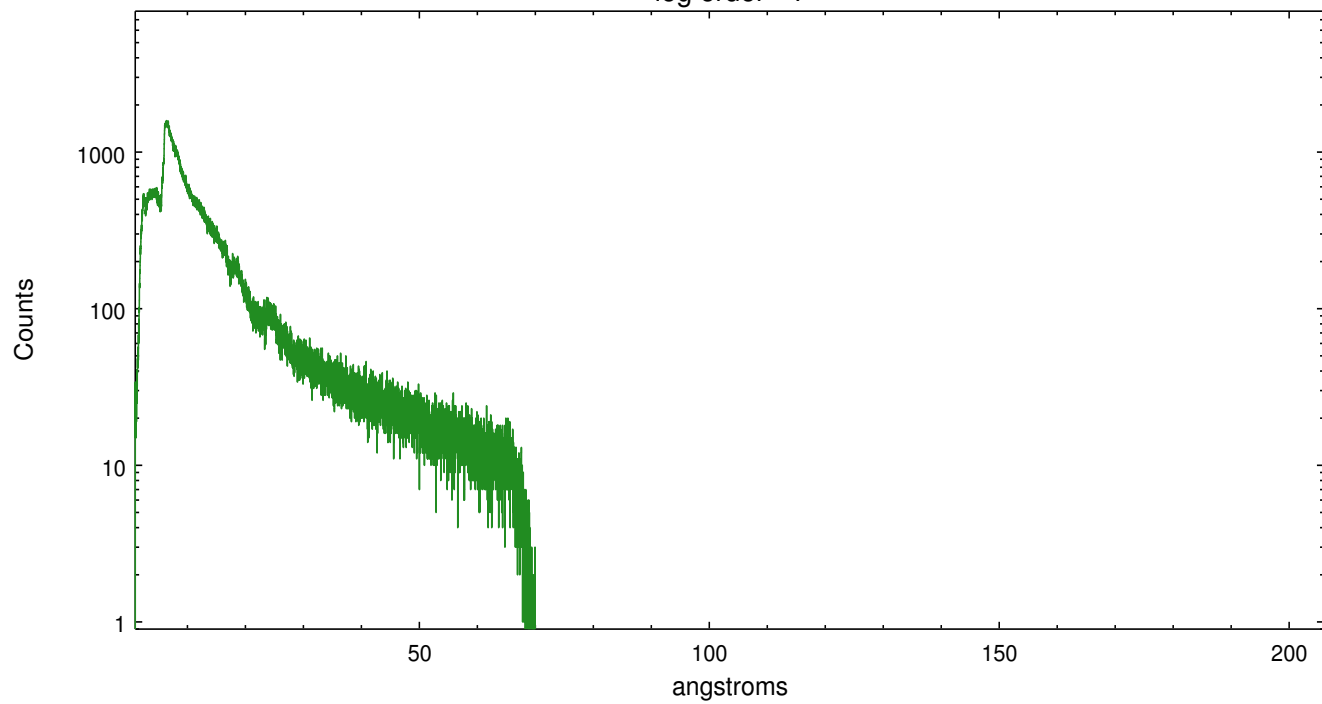
3 Gratings

3.1 LETG Arm

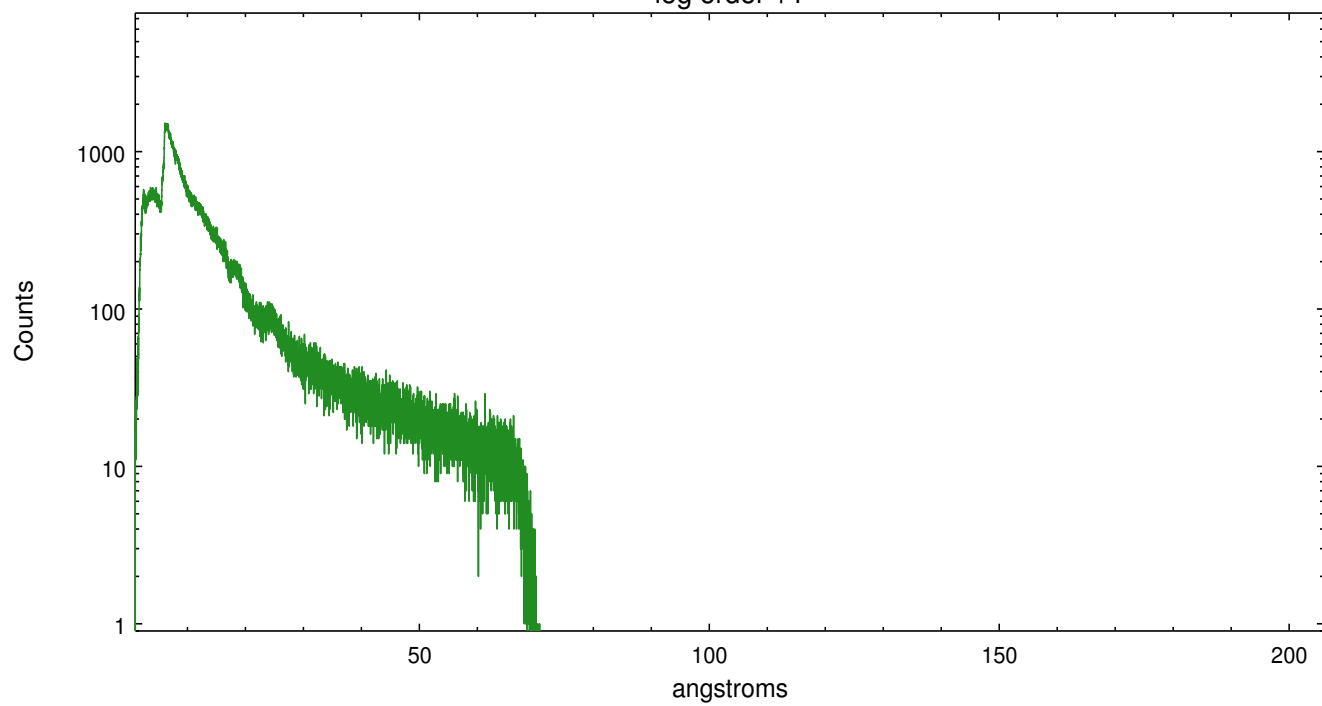


LETG Zero Order

leg order -1



leg order +1



A Summary

A.1 Status

V&V Scientist	Joy Nichols
V&V Date (YYYY-MM-DD)	2012.08.27
V&V Edition	1
V&V Disposition and Status	OK
V&V Charge Time	30.158

A.2 Comments