

V&V Reference Report

L2 ASCDS Version : 8.4.5

Observation 907 - L2 Version 4
Chandra X-Ray Center

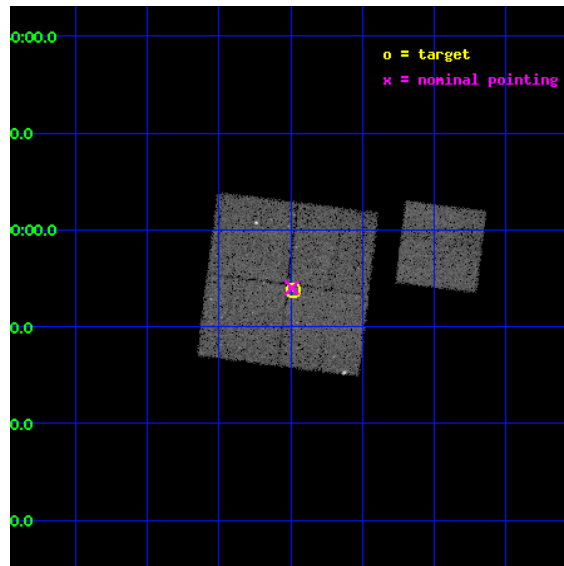
L2 Processing Date : Aug 25 2012

Contents

1	Front	2
2	OBI	3
2.1	OBI	3
2.1.1	Images	3
2.1.2	Bias	3
2.1.3	Parameters	4
2.1.4	Events	4
2.2	Compared Parameters	5
2.3	Aspect	6
2.4	Star Slots	9
2.4.1	Slot 3	9
2.4.2	Slot 4	10
2.4.3	Slot 5	11
2.4.4	Slot 6	12
2.4.5	Slot 7	13
2.5	FID Slots	14
2.5.1	Slot 0	14
2.5.2	Slot 1	15
2.5.3	Slot 2	16
A	Summary	17
A.1	Status	17
A.2	Comments	17

1 Front

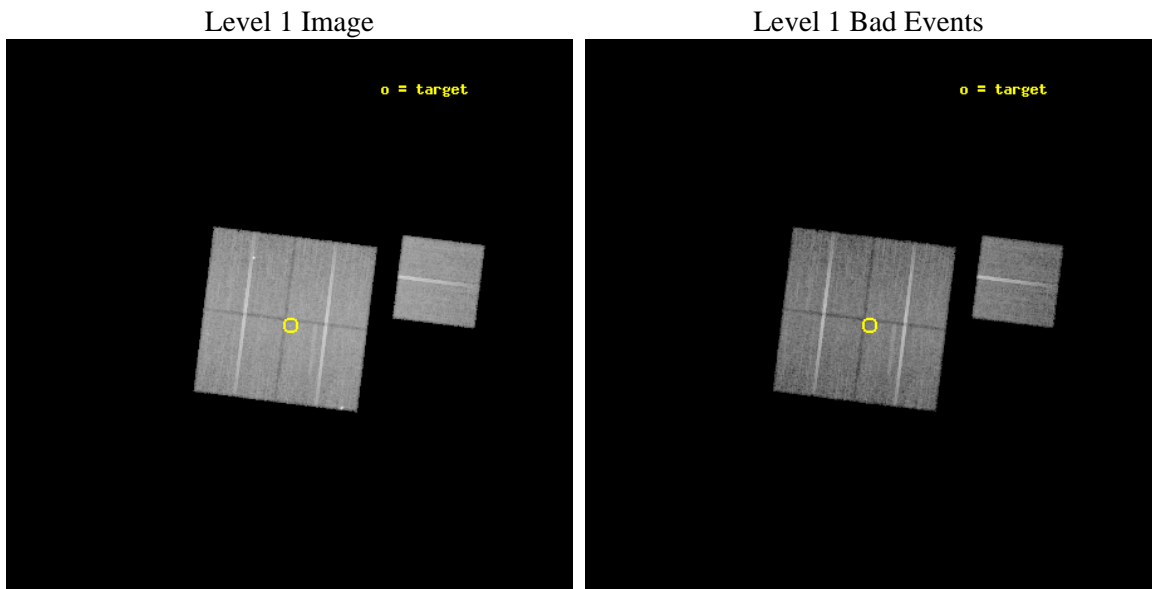
seq_num	800083	Sequence number
obs_id	907	Observation id
title	DARK CLUSTERS AS GRAVITATIONAL LENSES	Proposal title
observer	Dr. Gerard Williger	Principal investigator
object	QB 1429-008A,B	Source name
dtcycle	0	
cycle	P	events from which exps? Prim/Second/Both
ra_targ	218.121667	Observer's specified target RA [deg]
dec_targ	-1.104722	Observer's specified target Dec [deg]
ra_nom	218.1230610291	Nominal RA [deg]
dec_nom	-1.0998342905741	Nominal Dec [deg]
roll_nom	97.113476865582	Nominal Roll [deg]
revision	4	Processing version of data
ontime	21689.600020185	Sum of GTIs [s]
livetime	21414.95324482	Livetime [s]
ontime0	21689.600020185	Sum of GTIs [s]
ontime1	21686.359049946	Sum of GTIs [s]
ontime2	21686.359049946	Sum of GTIs [s]
ontime3	21689.600020185	Sum of GTIs [s]
ontime6	21686.359079868	Sum of GTIs [s]
l2events	75107	Number of level 2 events



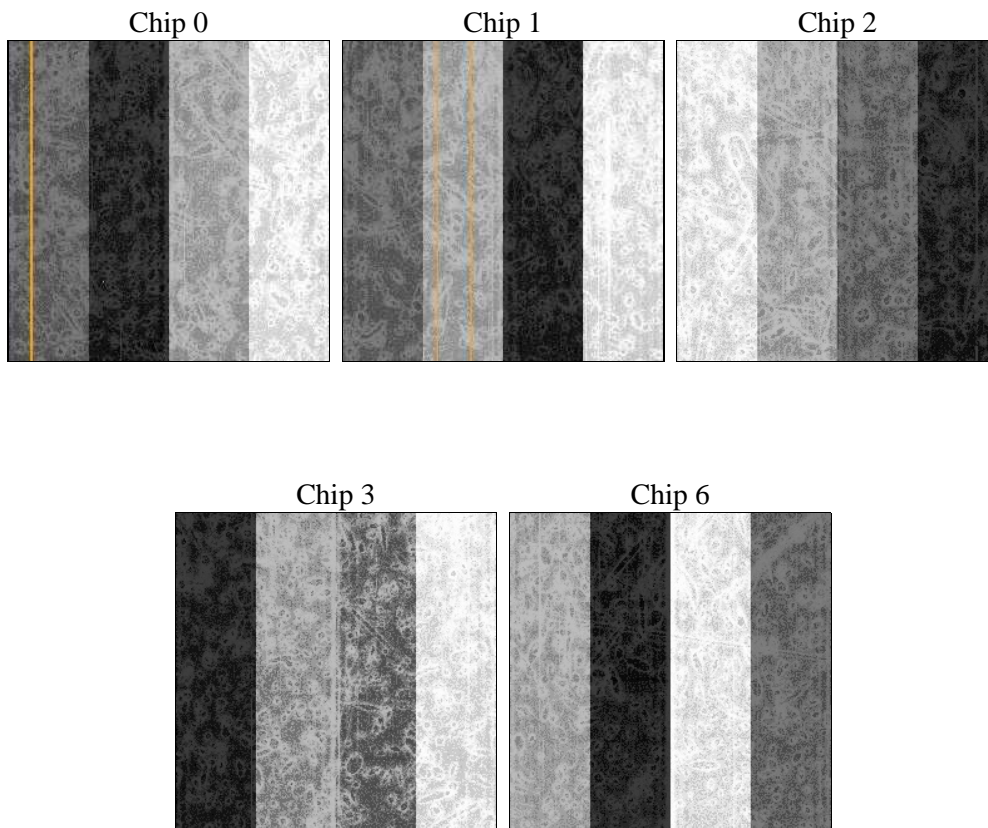
2 OBI

2.1 OBI

2.1.1 Images



2.1.2 Bias



2.1.3 Parameters

obi_num	0	Obi number	sched_exp_time	21250.000000	[s] Scheduled observation exposure time
ascdsver	8.4.5	Processing system revision	ontime	21689.600020185	Sum of GTIs [s]
caldsver	4.5.1.1	 	ontime0	21689.600020185	Sum of GTIs [s]
date	2012-08-25T03:14:36	Date and time of file creation	ontime1	21686.359049946	Sum of GTIs [s]
revision	4	Processing version of data	ontime2	21686.359049946	Sum of GTIs [s]
			ontime3	21689.600020185	Sum of GTIs [s]
			ontime6	21686.359079868	Sum of GTIs [s]
			l1events	774148	Number of level 1 events

2.1.4 Events

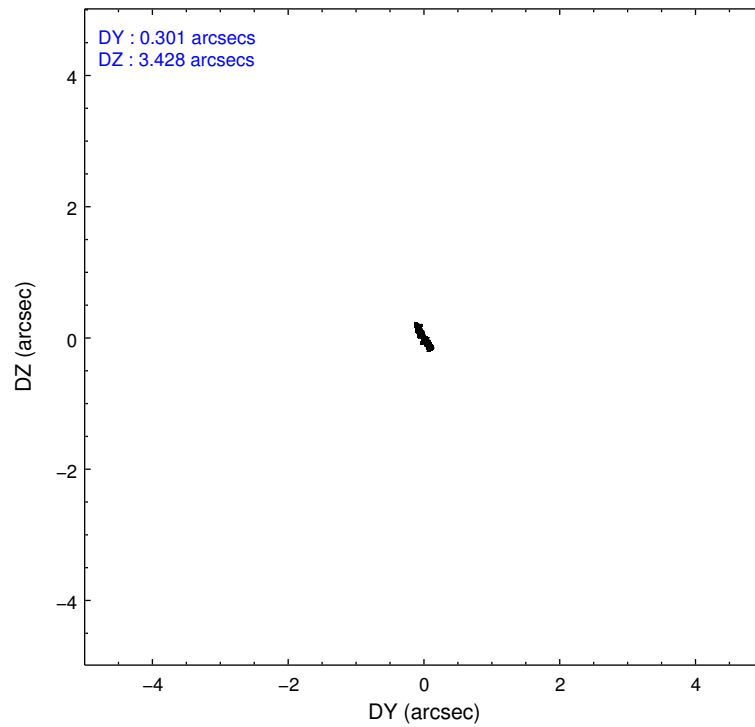
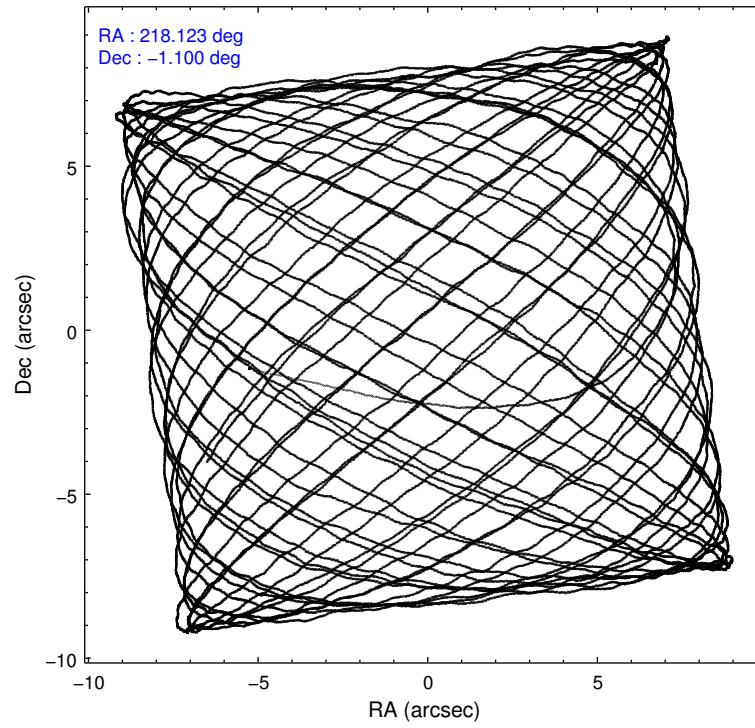
	ccd 0	ccd 1	ccd 2	ccd 3	ccd 6
level 1 events	149111	145654	163616	160891	154876
rejected events	130093	127439	147423	142539	138359
rejected %	87%	87%	90%	88%	89%

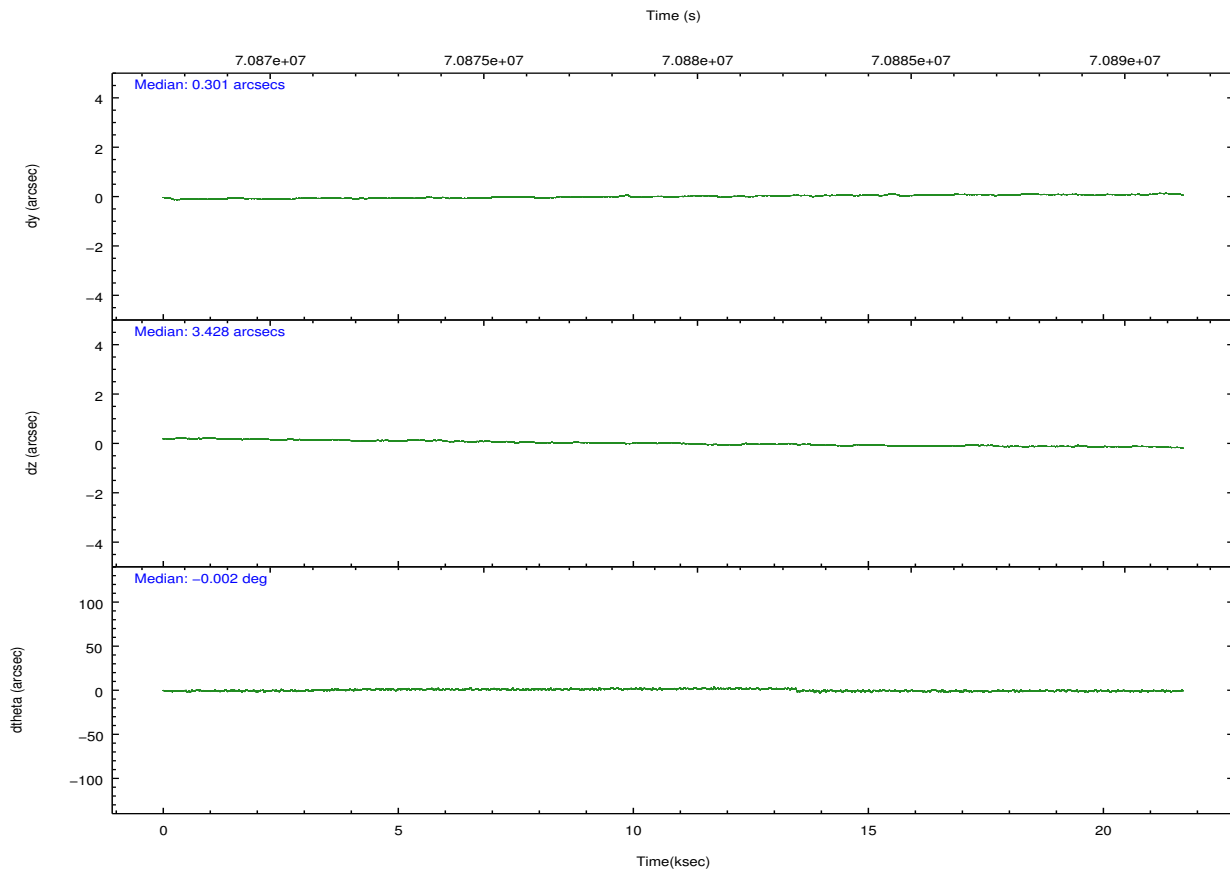
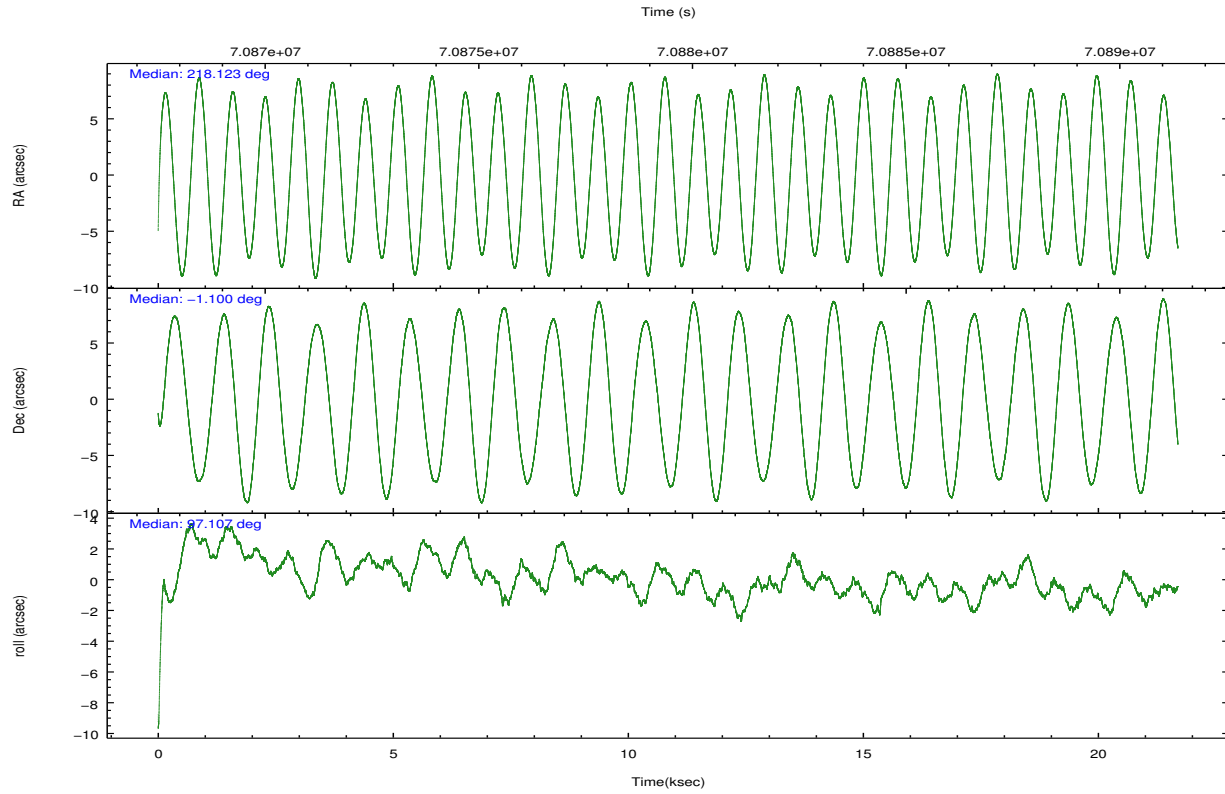
	ccd 0	ccd 1	ccd 2	ccd 3	ccd 6
grade 0 events	9045	7777	7097	8891	6855
	6%	5%	4%	5%	4%
grade 1 events	85	82	77	92	61
	0%	0%	0%	0%	0%
grade 2 events	3597	3426	3255	3315	3222
	2%	2%	1%	2%	2%
grade 3 events	1860	1971	1596	1698	1702
	1%	1%	0%	1%	1%
grade 4 events	1658	1885	1600	1676	1635
	1%	1%	0%	1%	1%
grade 5 events	4992	5141	4778	5157	5677
	3%	3%	2%	3%	3%
grade 6 events	2966	3277	2781	2905	3251
	1%	2%	1%	1%	2%
grade 7 events	124908	122095	142432	137157	132473
	83%	83%	87%	85%	85%

2.2 Compared Parameters

Parameter	Planned	Actual	Parameter	Planned	Actual
Instrument	ACIS	ACIS	Obspar format version number	7	7
Detector	ACIS-01236	ACIS-01236	Obspar file type	PREDICTED	ACTUAL
Grating	NONE	NONE	Obspar update status	NONE	UPDATED
Data mode	FAINT	FAINT	Number of optional ACIS chips dropped	0	0
Observation mode	POINTING	POINTING	On-chip summing requested	N	N
[deg] Pointing RA	218.139545	218.1230610290977	Subarray requested	NONE	NONE
[deg] Pointing Dec	-1.122032	-1.099834290574142	Alternating exposures requested	N	N
[deg] Pointing Roll	96.905115	97.11347686558155	[s] Primary exposure time	0.000000	3.2
[mm] SIM focus pos	-0.782348	-0.7809083437167272			
[mm] SIM defocus	0	0.001439871863259334			
[mm] SIM translation stage pos	-233.592463	-233.5874344608287			
[mm] SIM translation stage offset	0	-0.005018542100998502			
[s] Observation start time (MET)	70869026.184000	70867668.548371			
Observation start date	2000-03-31T05:49:22	2000-03-31T05:27:48			
[s] Observation end time (MET)	70890276.184000	70891044.186727			
Observation end date	2000-03-31T11:43:32	2000-03-31T11:57:24			
Read mode	TIMED	TIMED			

2.3 Aspect



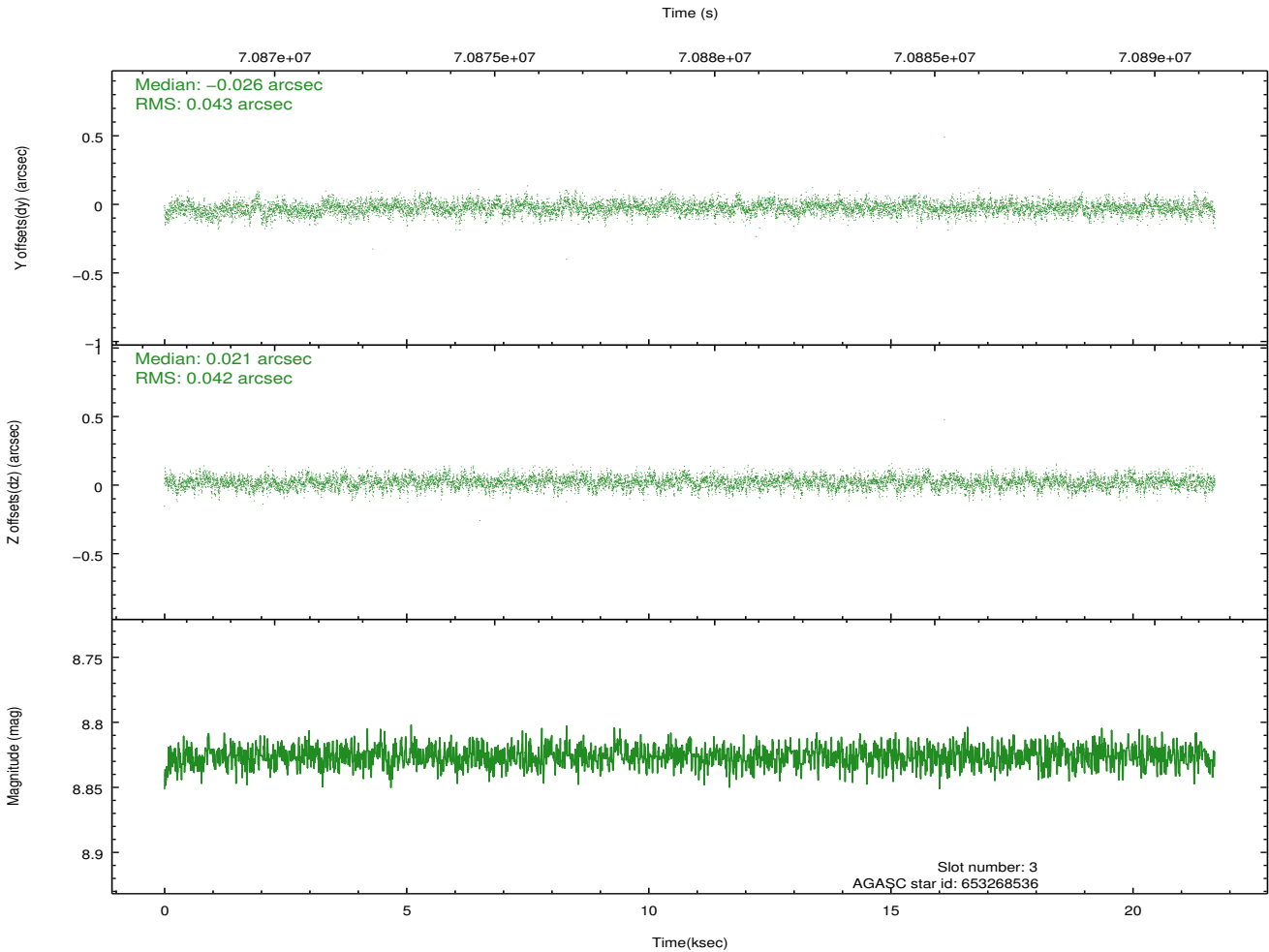
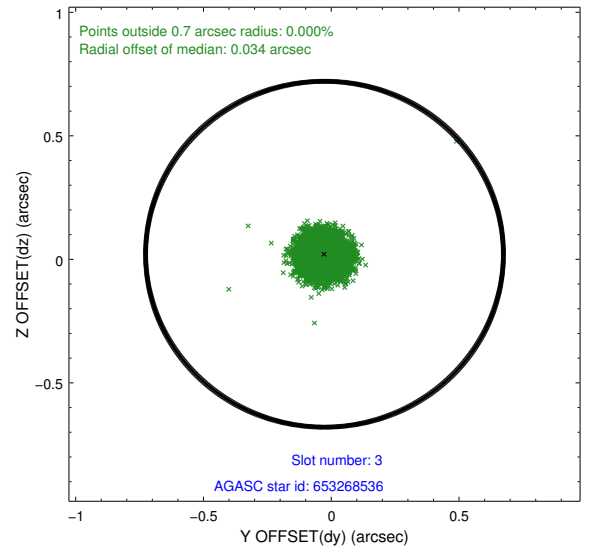
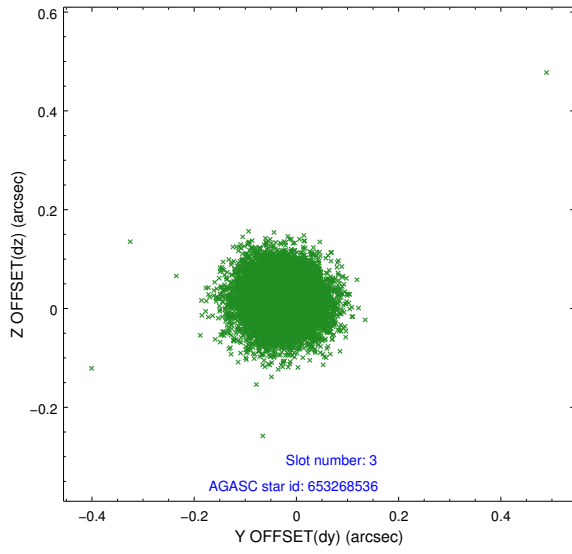


Slot Statistics

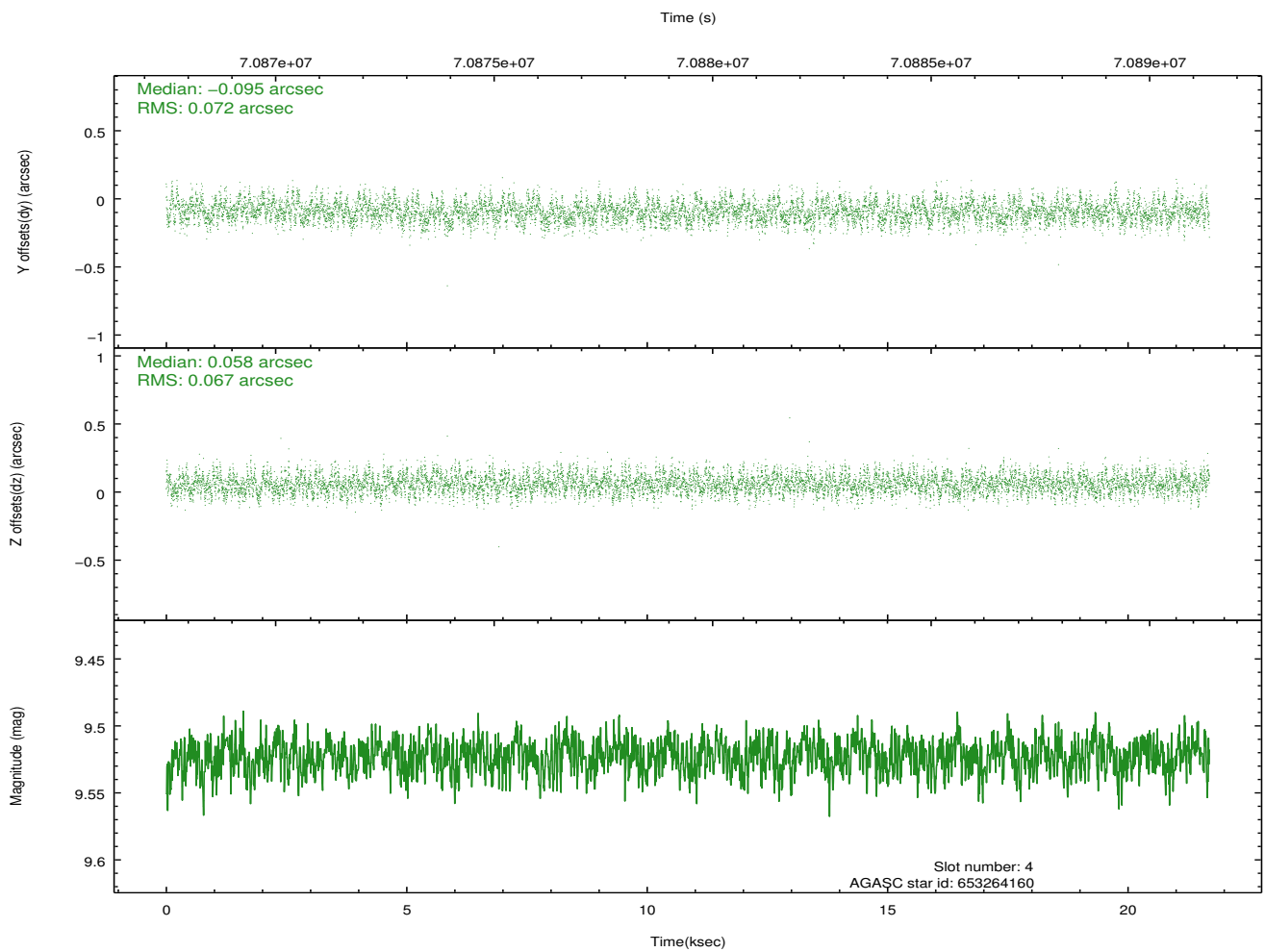
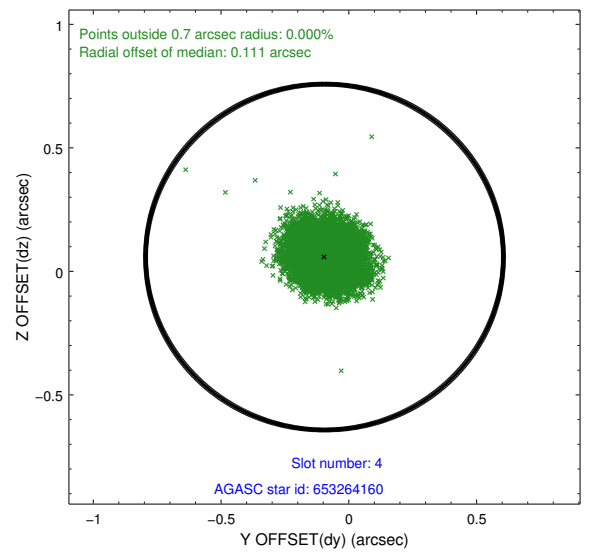
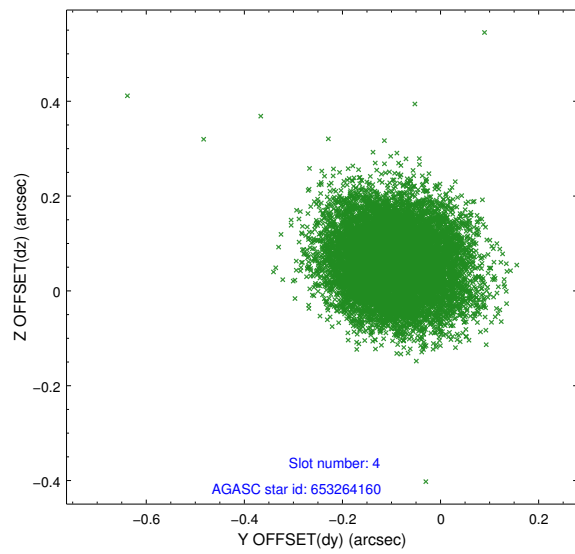
slot	status	id	mag	n_pts	med_dy	med_dz	dr1	dr2	ra	dec	mean_y	mean_z
0	FID	ACIS-I-2	7.15	5291	-0.040	-0.032	0.015	0.027	0.000000	0.000000	-754.65	-833.12
1	FID	ACIS-I-4	7.20	5292	0.000	0.039	0.011	0.039	0.000000	0.000000	2159.39	1073.02
2	FID	ACIS-I-5	7.23	5292	-0.064	0.061	0.013	0.024	0.000000	0.000000	-1808.28	1071.10
3	GUIDE	653268536	8.83	10583	-0.026	0.021	0.064	0.104	218.536180	-1.482480	-1459.23	-1262.33
4	GUIDE	653264160	9.52	10577	-0.095	0.058	0.106	0.165	218.442147	-0.541347	1944.84	-1333.73
5	GUIDE	653264480	9.68	10579	0.034	-0.054	0.102	0.164	217.731941	-1.412480	-861.17	1580.64
6	GUIDE	653265008	9.87	10569	0.037	-0.073	0.104	0.172	217.962518	-1.233422	-321.08	679.67
7	GUIDE	653265320	9.82	10575	0.049	0.047	0.091	0.150	218.178880	-0.743749	1335.57	-305.13

2.4 Star Slots

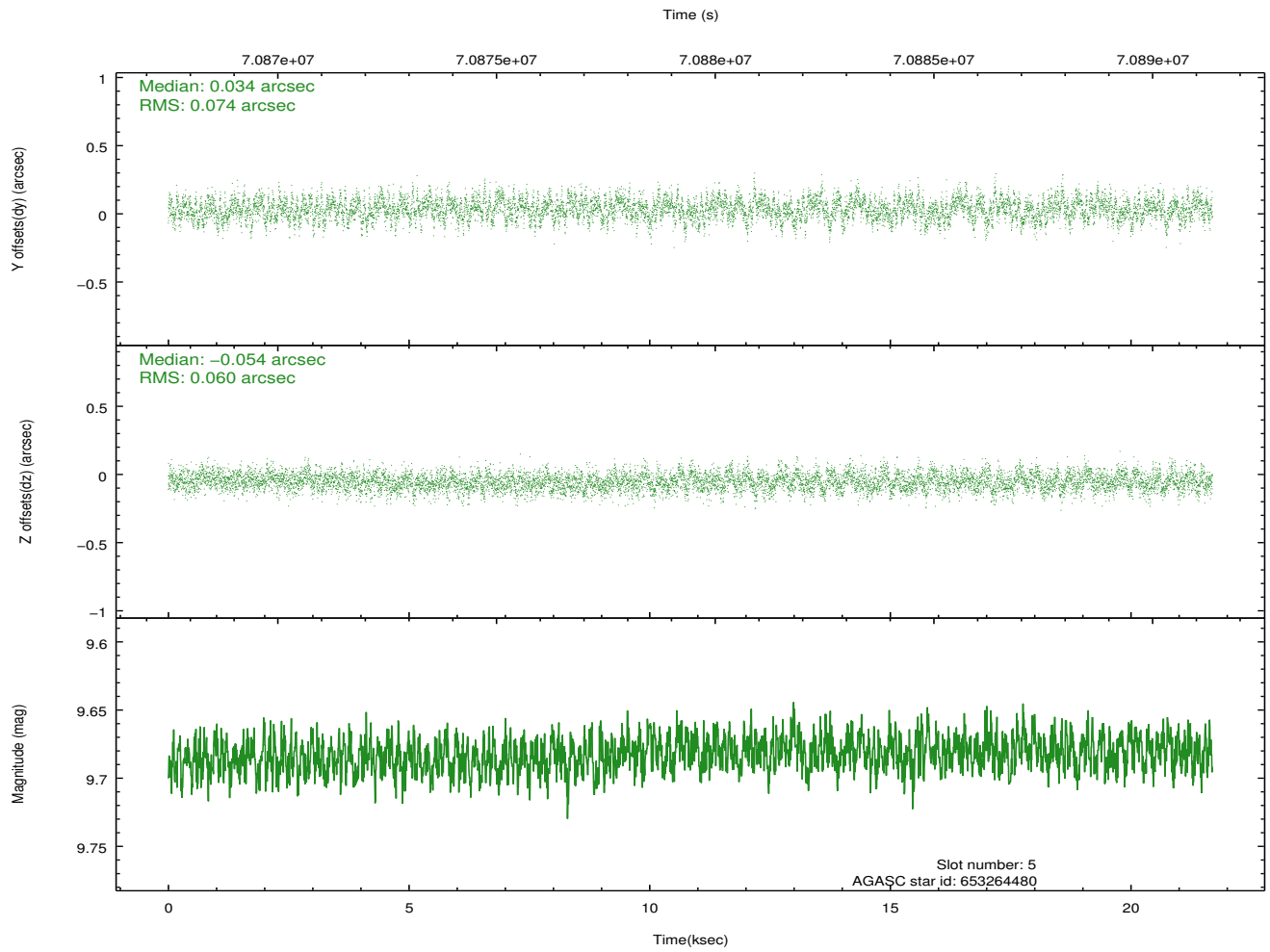
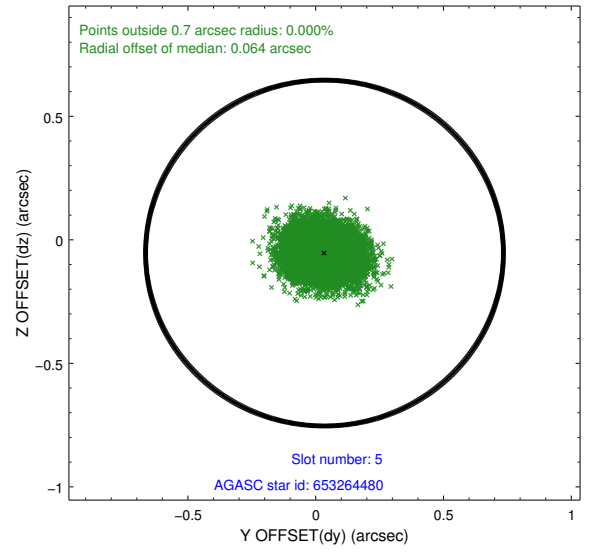
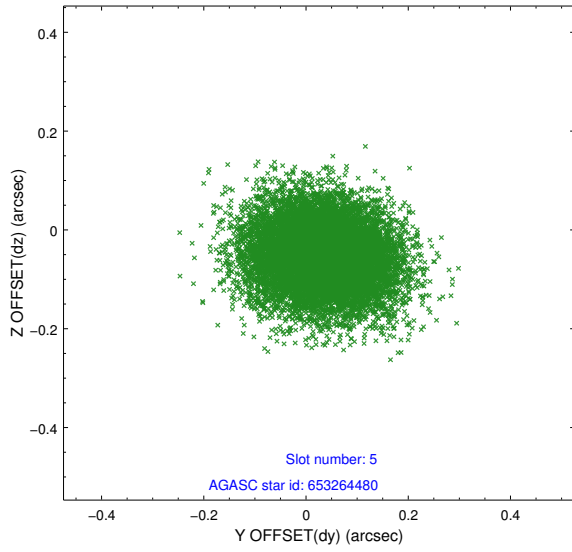
2.4.1 Slot 3



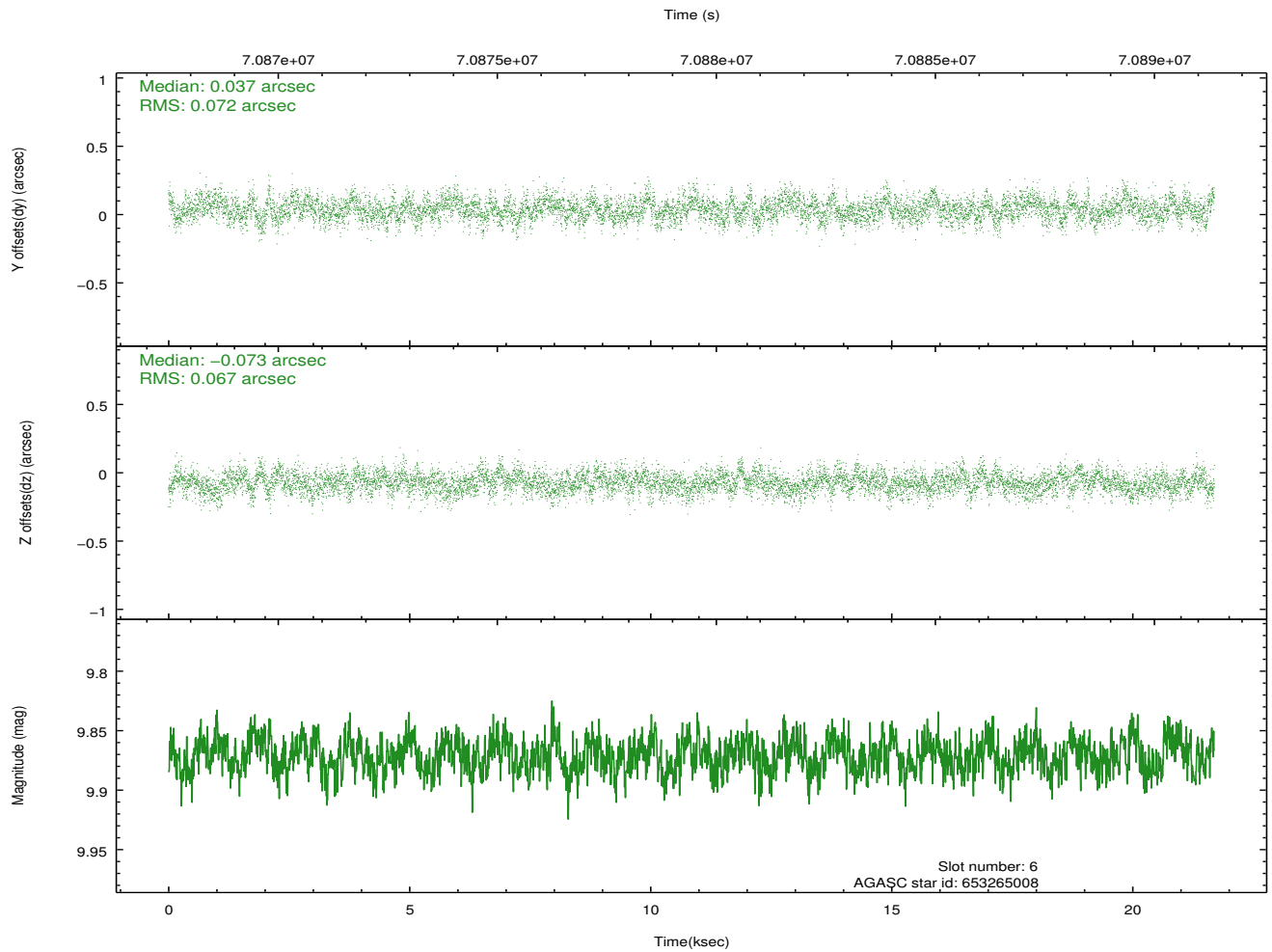
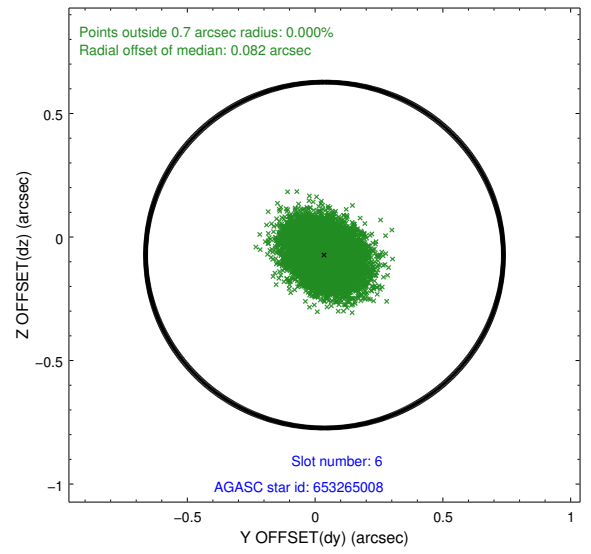
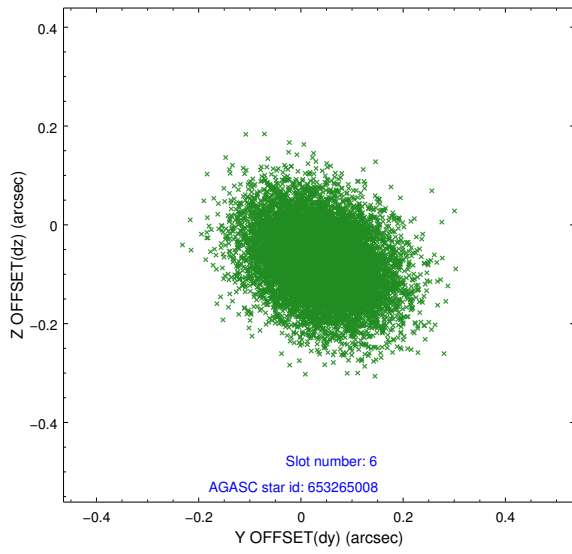
2.4.2 Slot 4



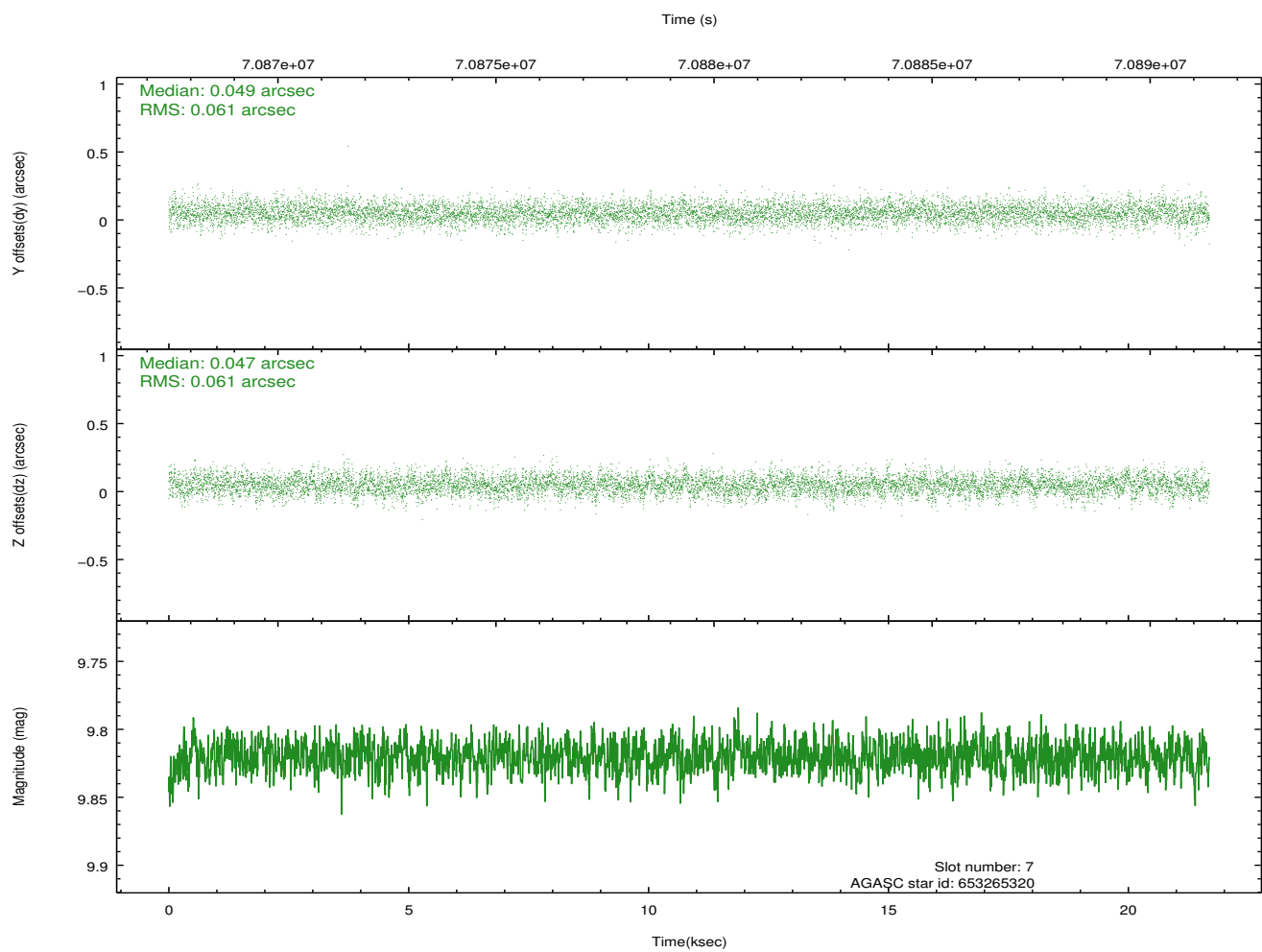
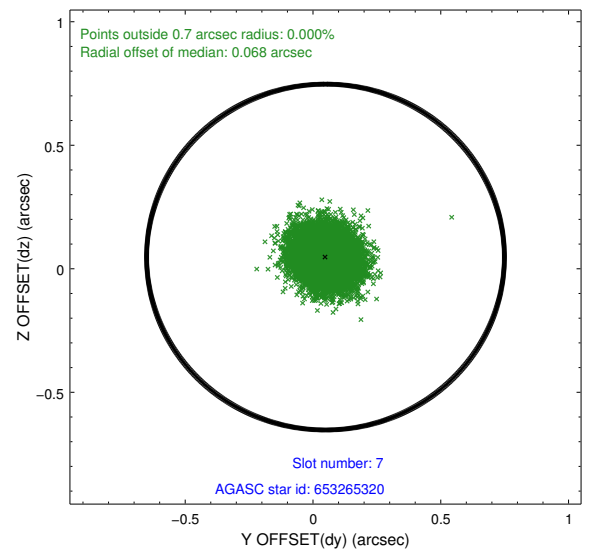
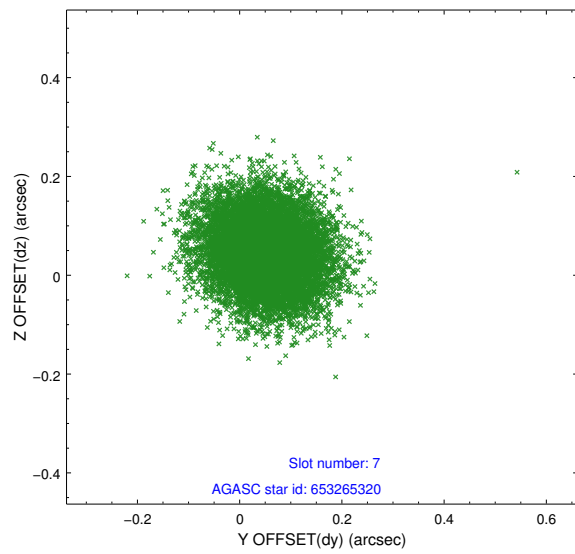
2.4.3 Slot 5



2.4.4 Slot 6

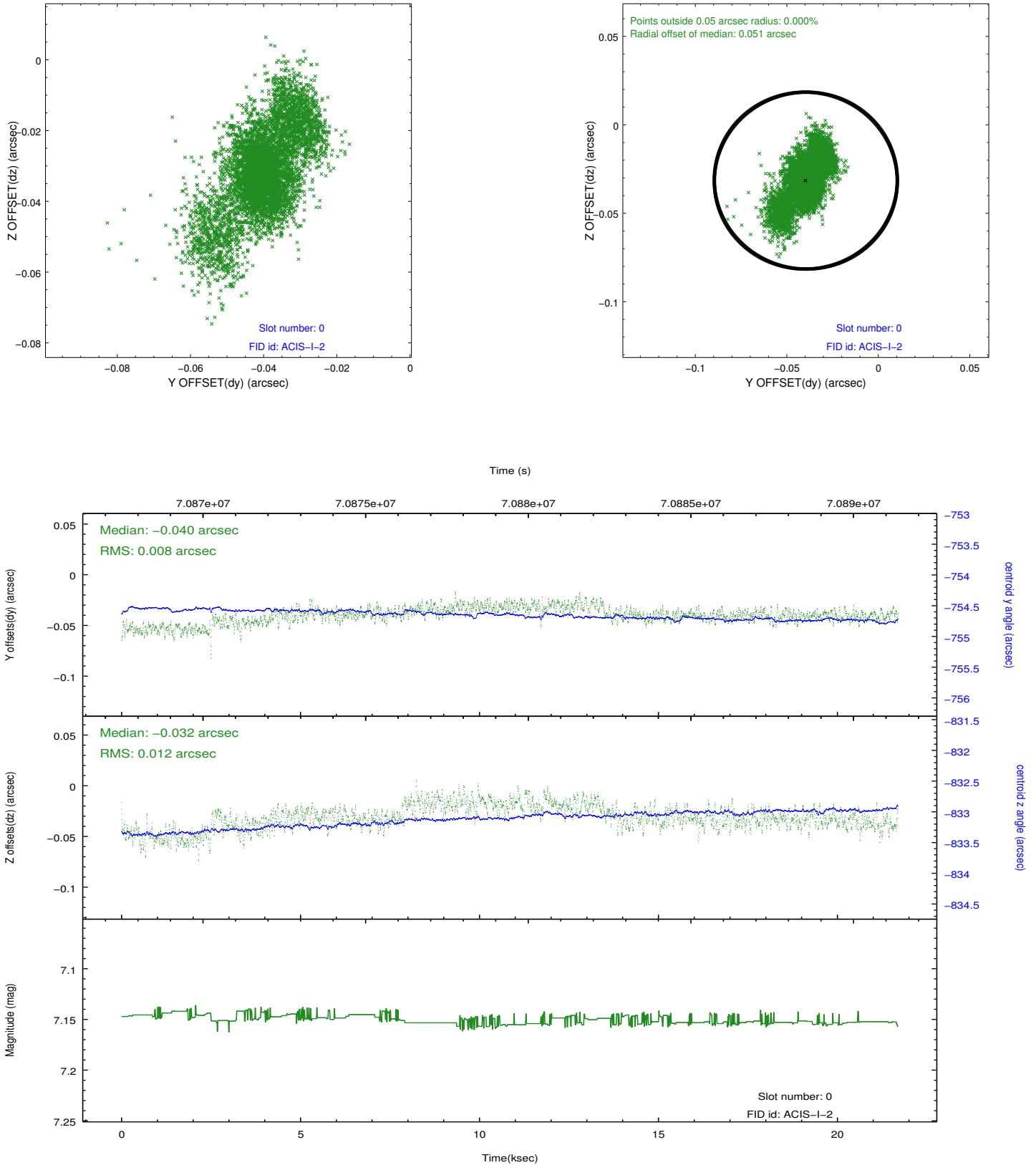


2.4.5 Slot 7

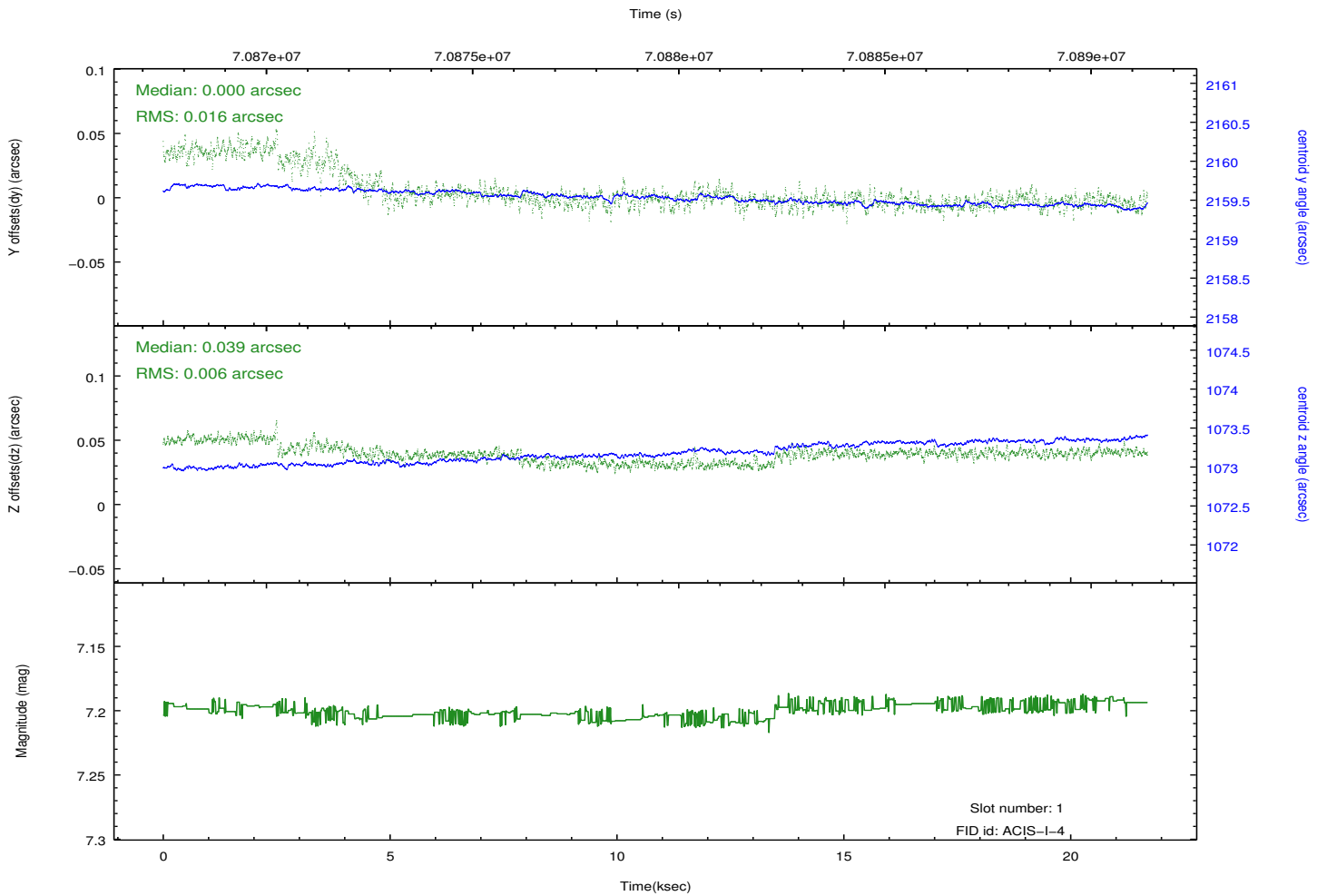
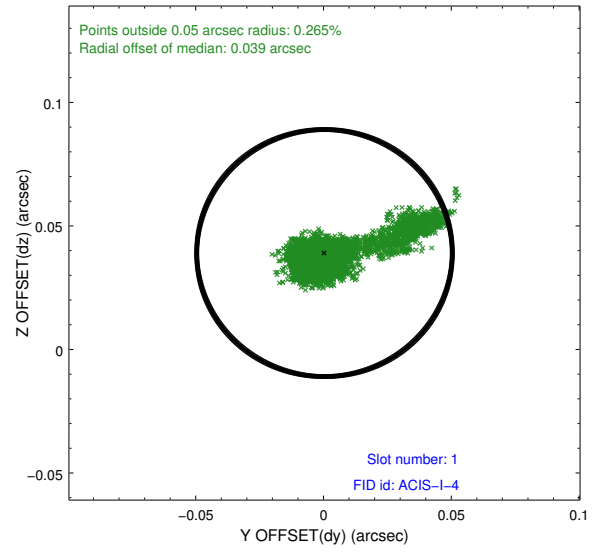
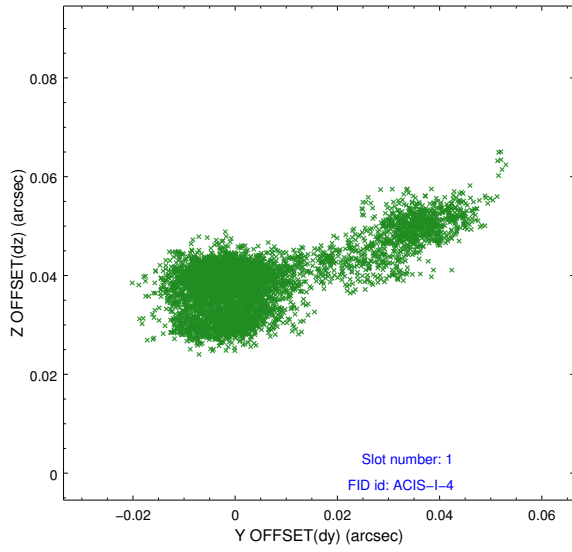


2.5 FID Slots

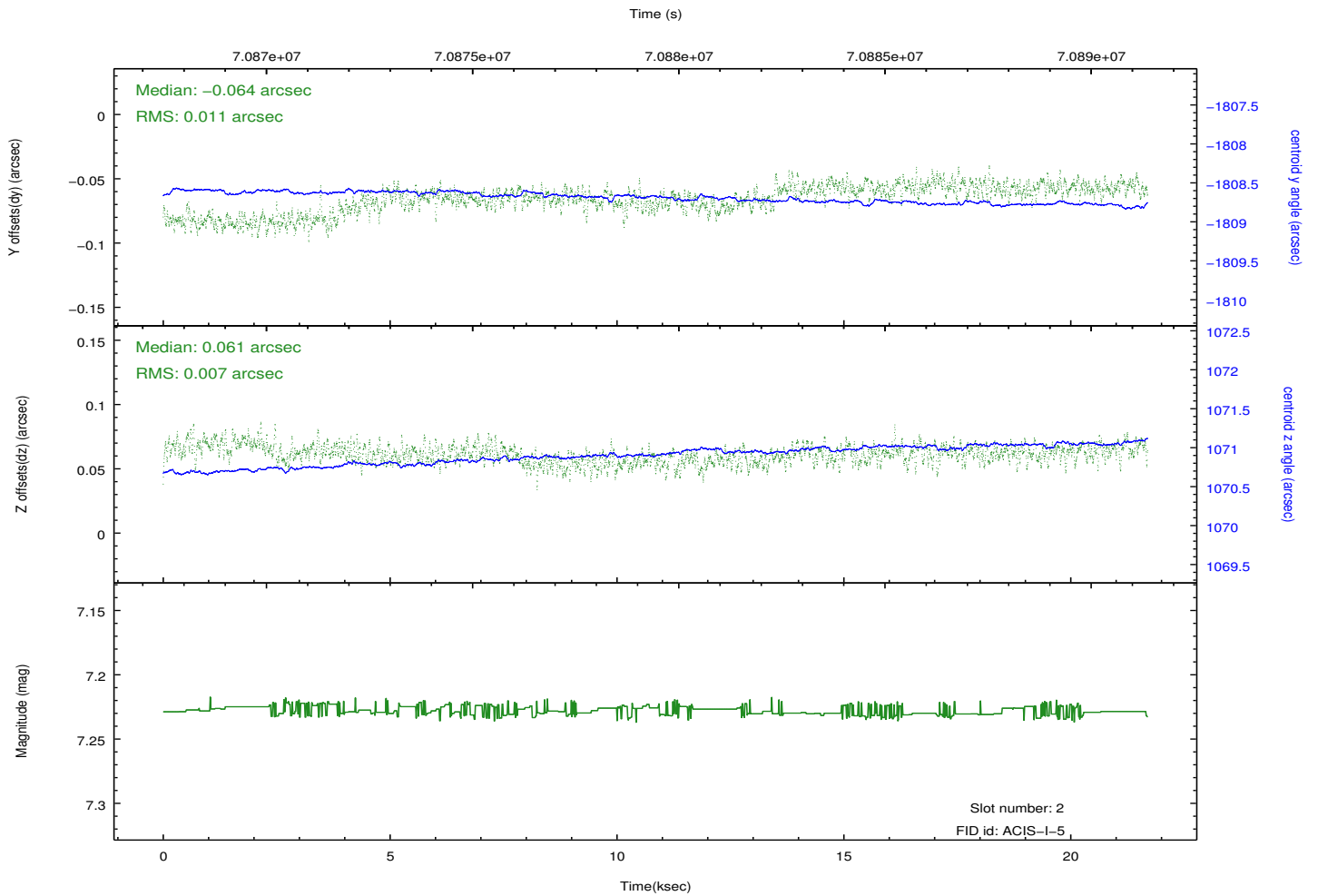
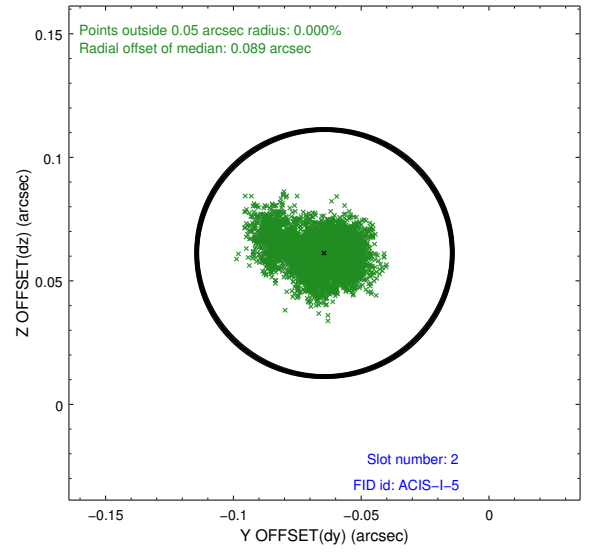
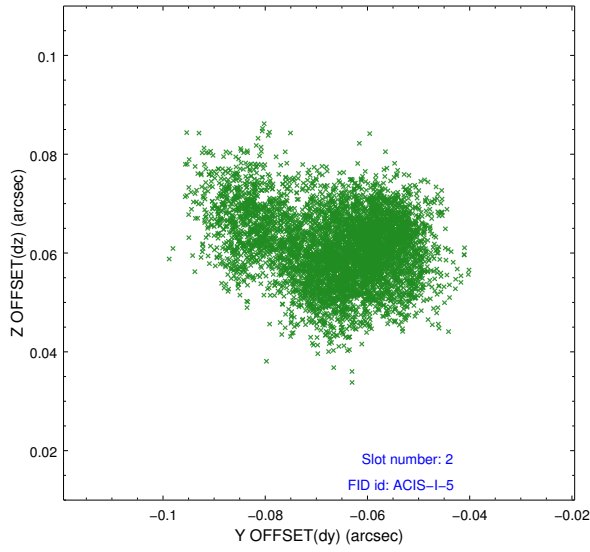
2.5.1 Slot 0



2.5.2 Slot 1



2.5.3 Slot 2



A Summary

A.1 Status

V&V Scientist	Jen Lauer
V&V Date (YYYY-MM-DD)	2012.08.28
V&V Edition	1
V&V Disposition and Status	OK
V&V Charge Time	21.689

A.2 Comments