

V&V Reference Report

L2 ASCDS Version : 8.4.4

Observation 9097 - L2 Version 2
Chandra X-Ray Center

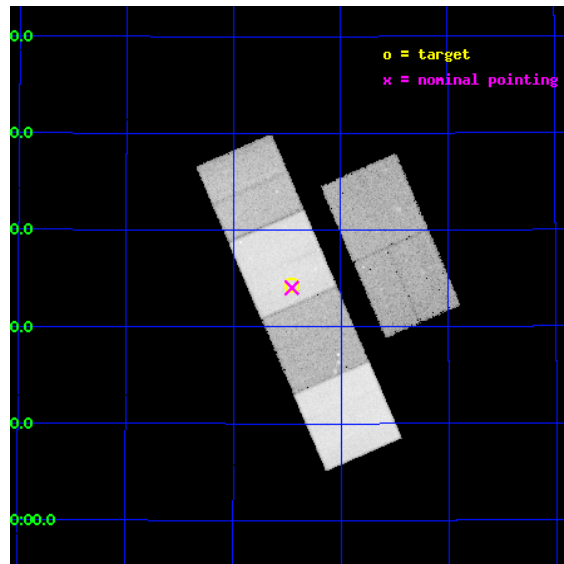
L2 Processing Date : May 7 2012

Contents

1	Front	2
2	OBI	3
2.1	OBI	3
2.1.1	Images	3
2.1.2	Bias	3
2.1.3	Parameters	4
2.1.4	Events	4
2.2	Compared Parameters	5
2.3	Aspect	6
2.4	Star Slots	9
2.4.1	Slot 3	9
2.4.2	Slot 4	10
2.4.3	Slot 5	11
2.4.4	Slot 6	12
2.4.5	Slot 7	13
2.5	FID Slots	14
2.5.1	Slot 0	14
2.5.2	Slot 1	15
2.5.3	Slot 2	16
A	Summary	17
A.1	Status	17
A.2	Comments	17

1 Front

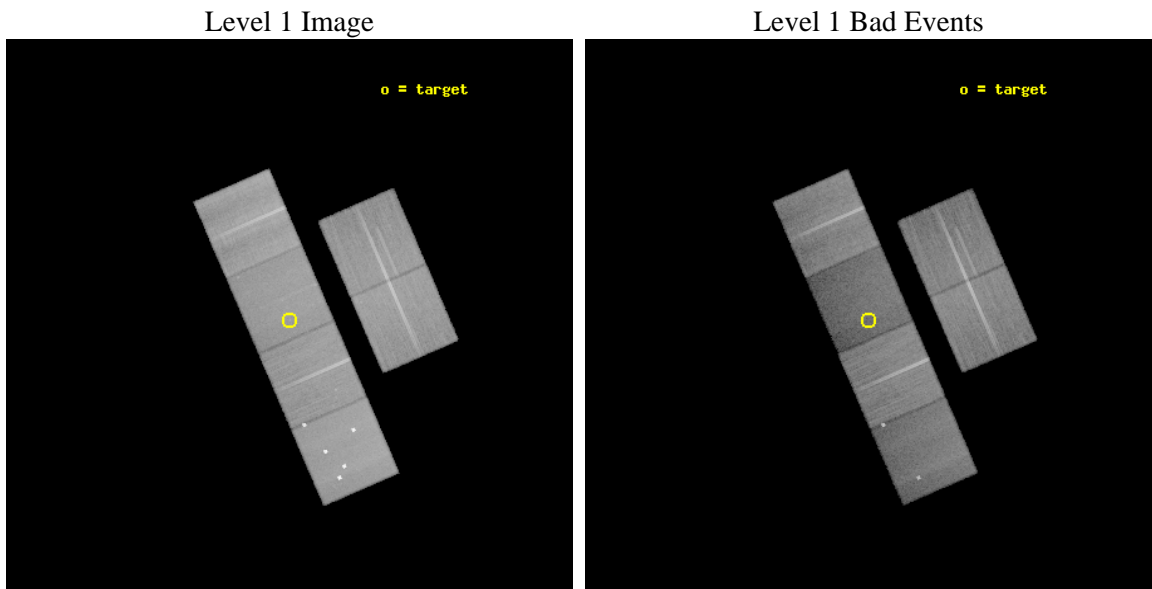
seq_num	500960	Sequence number
obs_id	9097	Observation id
title	Chandra Observations of Young, Energetic Supernovae	Proposal title
observer	Prof. David Pooley	Principal investigator
object	SN 2006gy	Source name
dtycycle	0	
cycle	P	events from which exps? Prim/Second/Both
ra_targ	49.362917	Observer's specified target RA [deg]
dec_targ	41.405417	Observer's specified target Dec [deg]
ra_nom	49.363834205908	Nominal RA [deg]
dec_nom	41.400630227047	Nominal Dec [deg]
roll_nom	246.53417130634	Nominal Roll [deg]
revision	2	Processing version of data
ontime	35180.799869001	Sum of GTIs [s]
livetime	34735.319397725	Livetime [s]
ontime2	35171.076788068	Sum of GTIs [s]
ontime3	35180.799869001	Sum of GTIs [s]
ontime5	35180.799869001	Sum of GTIs [s]
ontime6	35180.799869001	Sum of GTIs [s]
ontime7	35180.799869001	Sum of GTIs [s]
ontime8	35180.799869001	Sum of GTIs [s]
l2events	471527	Number of level 2 events



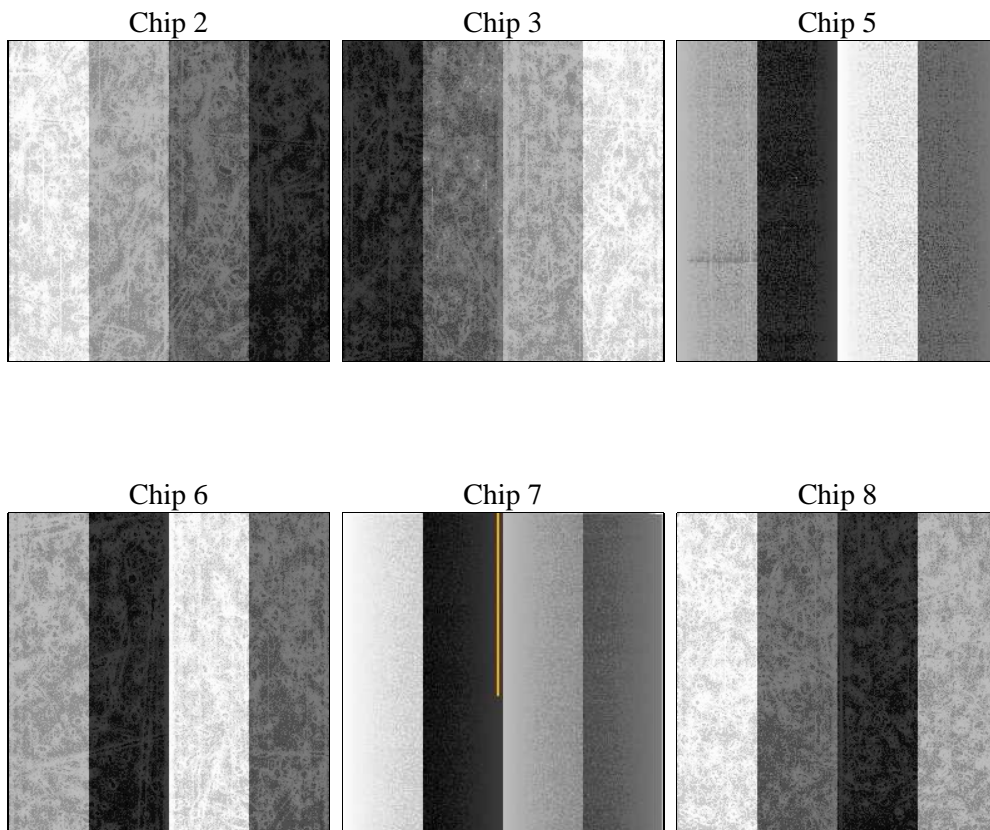
2 OBI

2.1 OBI

2.1.1 Images



2.1.2 Bias



2.1.3 Parameters

obi_num	0	Obi number	sched_exp_time	35000.000000	[s] Scheduled observation exposure time
ascdsver	8.4.4	Processing system revision	ontime	35180.799869001	Sum of GTIs [s]
caldbver	4.4.9	 	ontime2	35171.076788068	Sum of GTIs [s]
date	2012-05-07T03:39:39	Date and time of file creation	ontime3	35180.799869001	Sum of GTIs [s]
revision	2	Processing version of data	ontime5	35180.799869001	Sum of GTIs [s]
			ontime6	35180.799869001	Sum of GTIs [s]
			ontime7	35180.799869001	Sum of GTIs [s]
			ontime8	35180.799869001	Sum of GTIs [s]
			l1events	1929930	Number of level 1 events

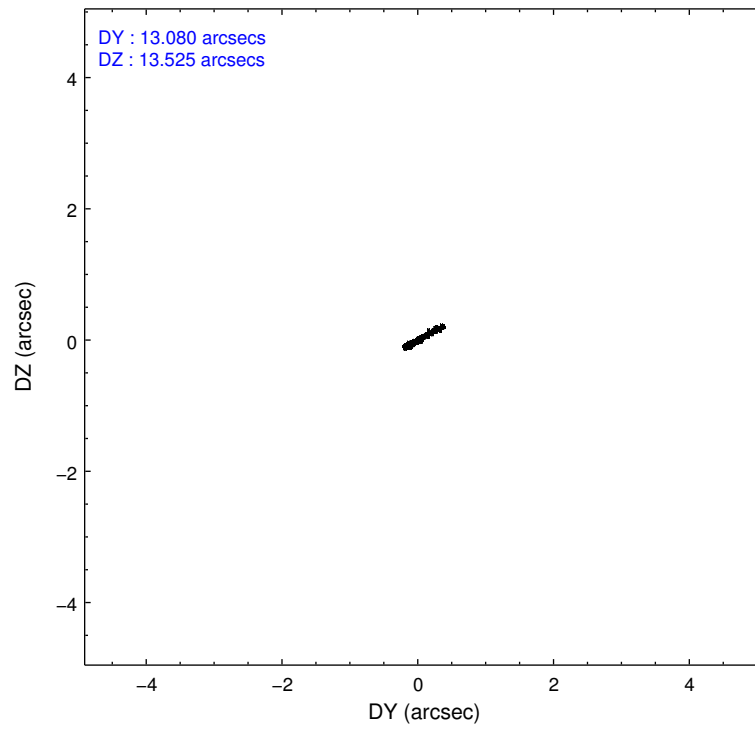
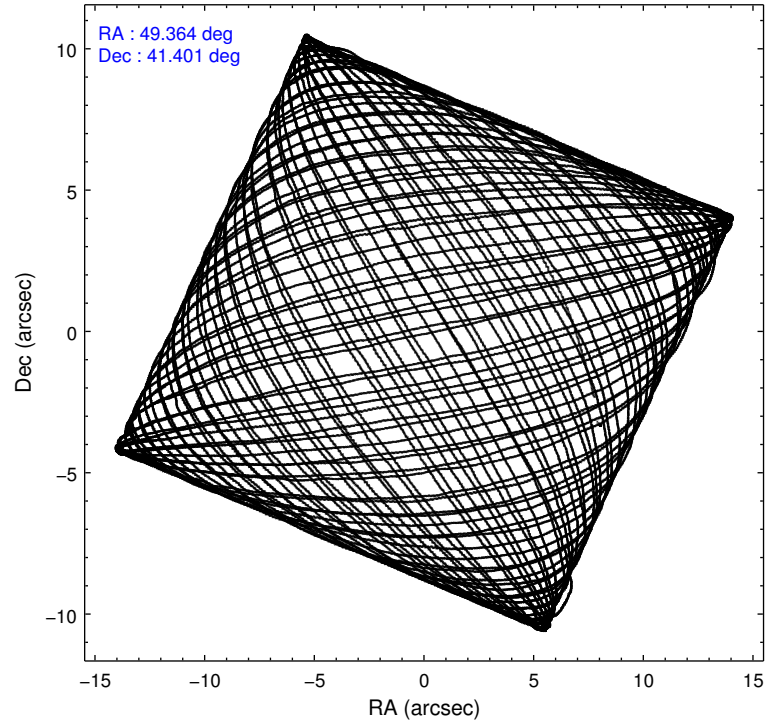
2.1.4 Events

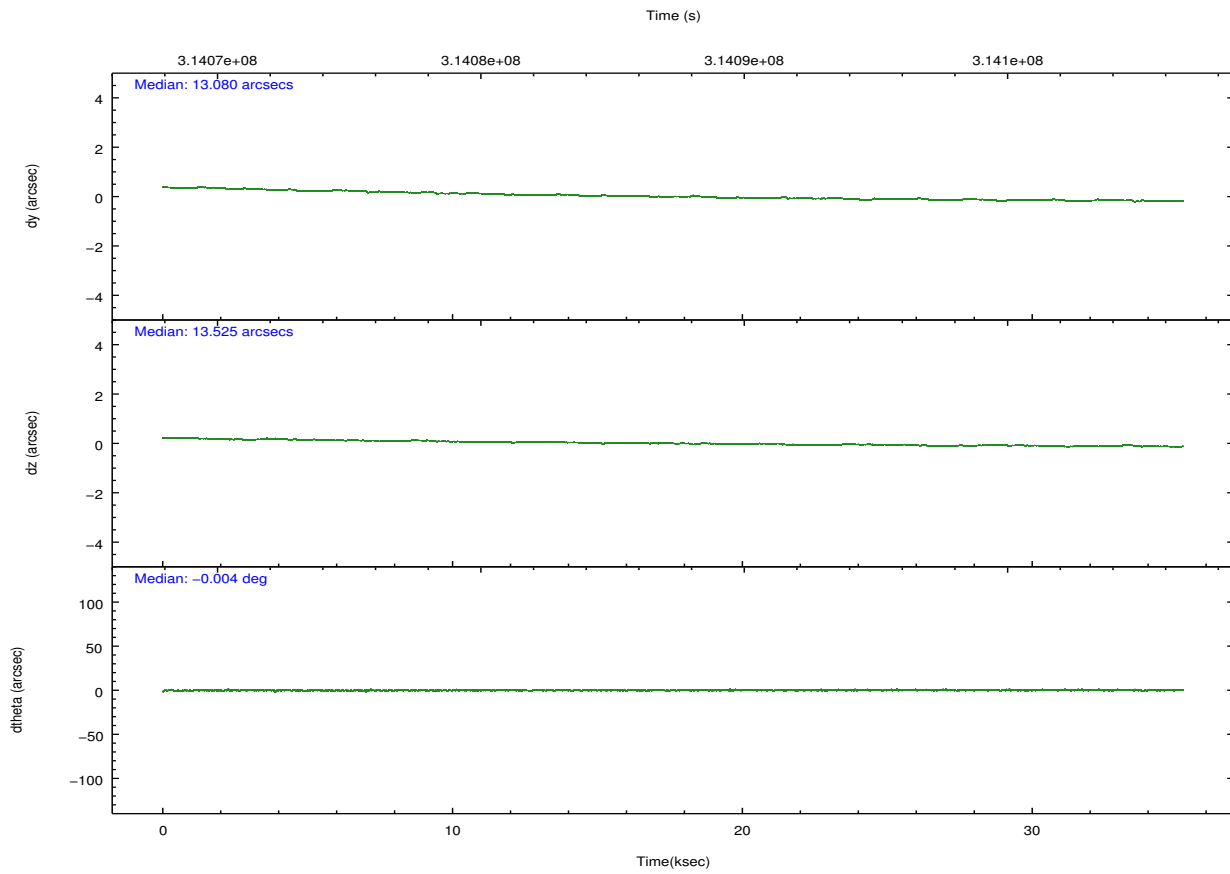
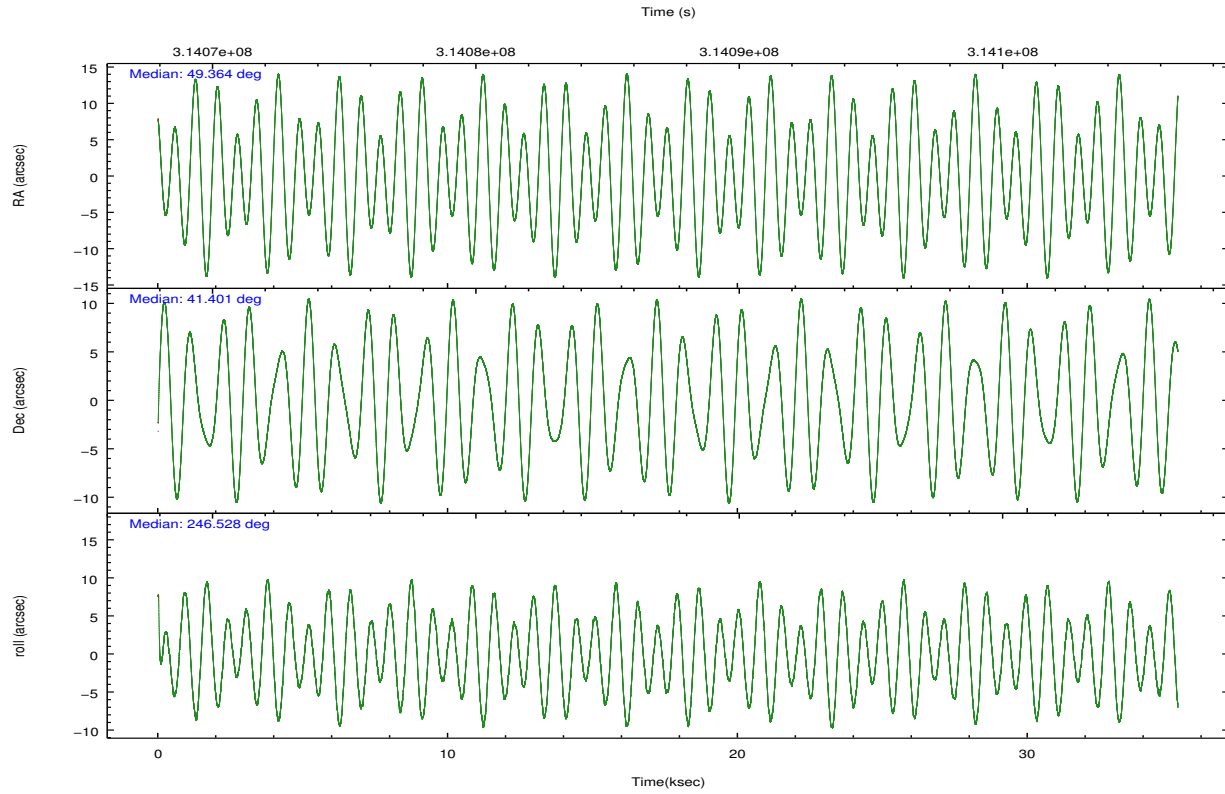
	ccd 2	ccd 3	ccd 5	ccd 6	ccd 7	ccd 8		ccd 2	ccd 3	ccd 5	ccd 6	ccd 7	ccd 8
level 1 events	309122	274085	390853	299852	291673	364345	grade 0 events	16499	17117	51854	24309	21504	43489
rejected events	275501	240581	169578	255506	135460	258748		5%	6%	13%	8%	7%	11%
rejected %	89%	87%	43%	85%	46%	71%	grade 1 events	195	210	4693	224	380	363
								0%	0%	1%	0%	0%	0%
							grade 2 events	6957	6134	64640	7891	35383	22157
								2%	2%	16%	2%	12%	6%
							grade 3 events	2918	3015	8161	3540	15570	9656
								0%	1%	2%	1%	5%	2%
							grade 4 events	3159	3019	8359	3423	15643	9061
								1%	1%	2%	1%	5%	2%
							grade 5 events	7684	9126	26316	9260	27552	14085
								2%	3%	6%	3%	9%	3%
							grade 6 events	4713	4831	93233	5957	71288	23321
								1%	1%	23%	1%	24%	6%
							grade 7 events	266997	230633	133597	245248	104353	242213
								86%	84%	34%	81%	35%	66%

2.2 Compared Parameters

Parameter	Planned	Actual	Parameter	Planned	Actual
Instrument	ACIS	ACIS	Obspar format version number	7	7
Detector	ACIS-235678	ACIS-235678	Obspar file type	PREDICTED	ACTUAL
Grating	NONE	NONE	Obspar update status	NONE	UPDATED
Data mode	VFAINT	VFAINT	CCD I0 on	N	N
Observation mode	POINTING	POINTING	CCD I1 on	N	N
[deg] Pointing RA	49.359192	49.36383420590793	CCD I2 on	O1	Y
[deg] Pointing Dec	41.427737	41.40063022704717	CCD I3 on	O2	Y
[deg] Pointing Roll	246.380605	246.5341713063422	CCD S0 on	N	N
[mm] SIM focus pos	-0.684267	-0.6828225247311905	CCD S1 on	Y	Y
[mm] SIM defocus	0	0.001444936568705701	CCD S2 on	Y	Y
[mm] SIM translation stage pos	-190.132523	-190.145094680475	CCD S3 on	Y	Y
[mm] SIM translation stage offset	0	0.01257209746719923	CCD S4 on	Y	Y
[s] Observation start time (MET)	314069897.184000	314068404.58204	CCD S5 on	N	N
Observation start date	2007-12-15T01:37:12	2007-12-15T01:13:24	Number of optional ACIS chips dropped	0	0
[s] Observation end time (MET)	314104897.184000	314105783.25885	On-chip summing requested	N	N
Observation end date	2007-12-15T11:20:32	2007-12-15T11:36:23	Subarray requested	NONE	NONE
Read mode	TIMED	TIMED	Alternating exposures requested	N	N
			[s] Primary exposure time	0.000000	3.2

2.3 Aspect



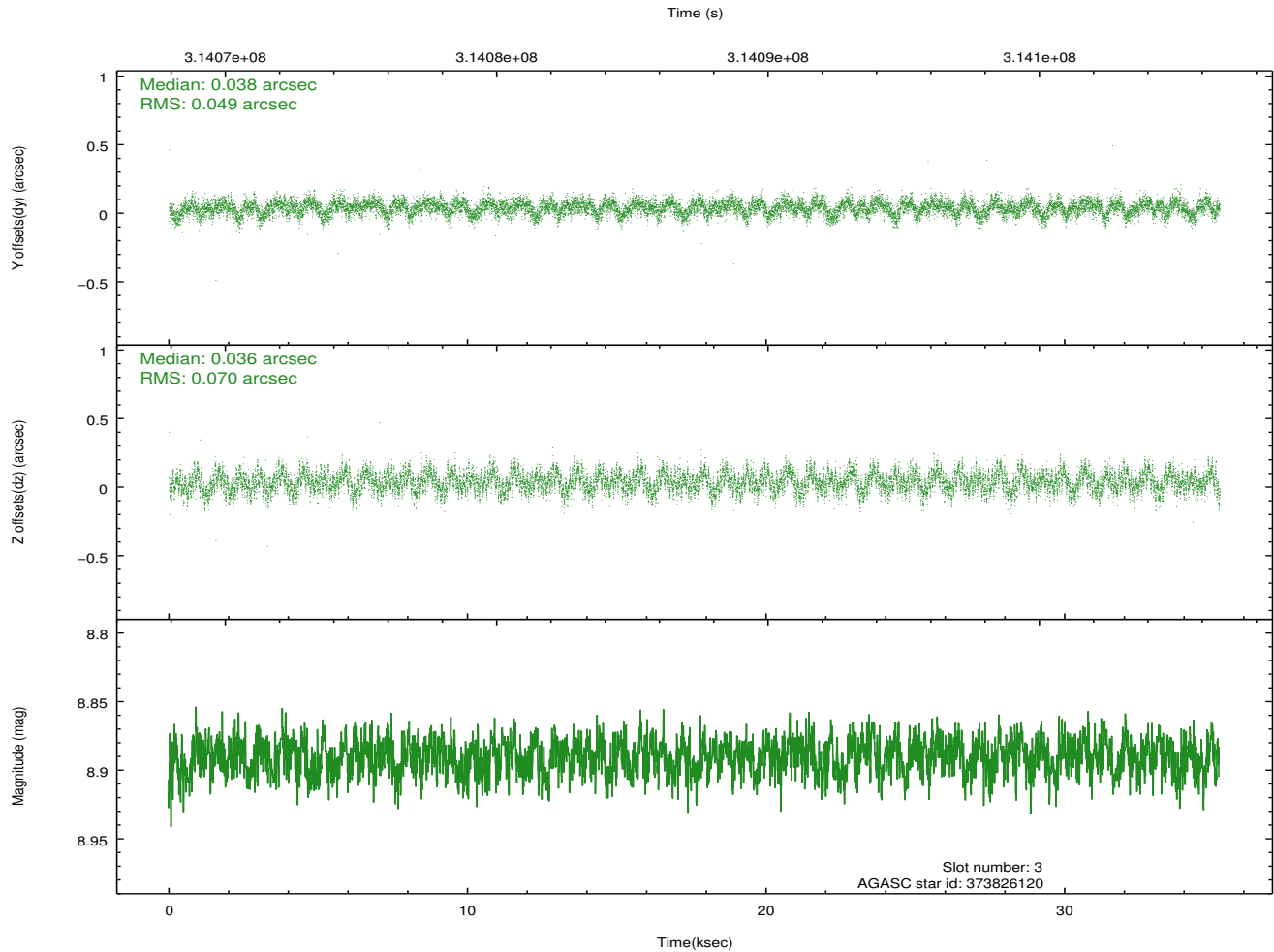
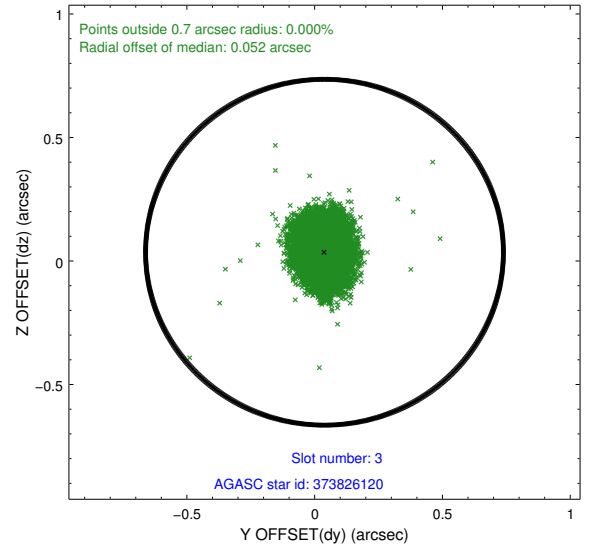
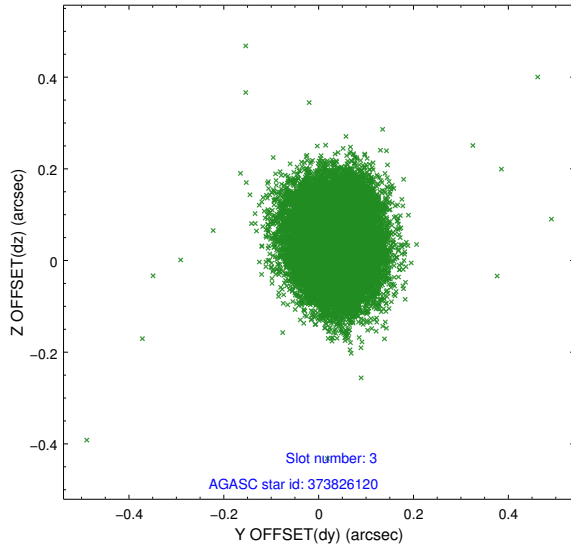


Slot Statistics

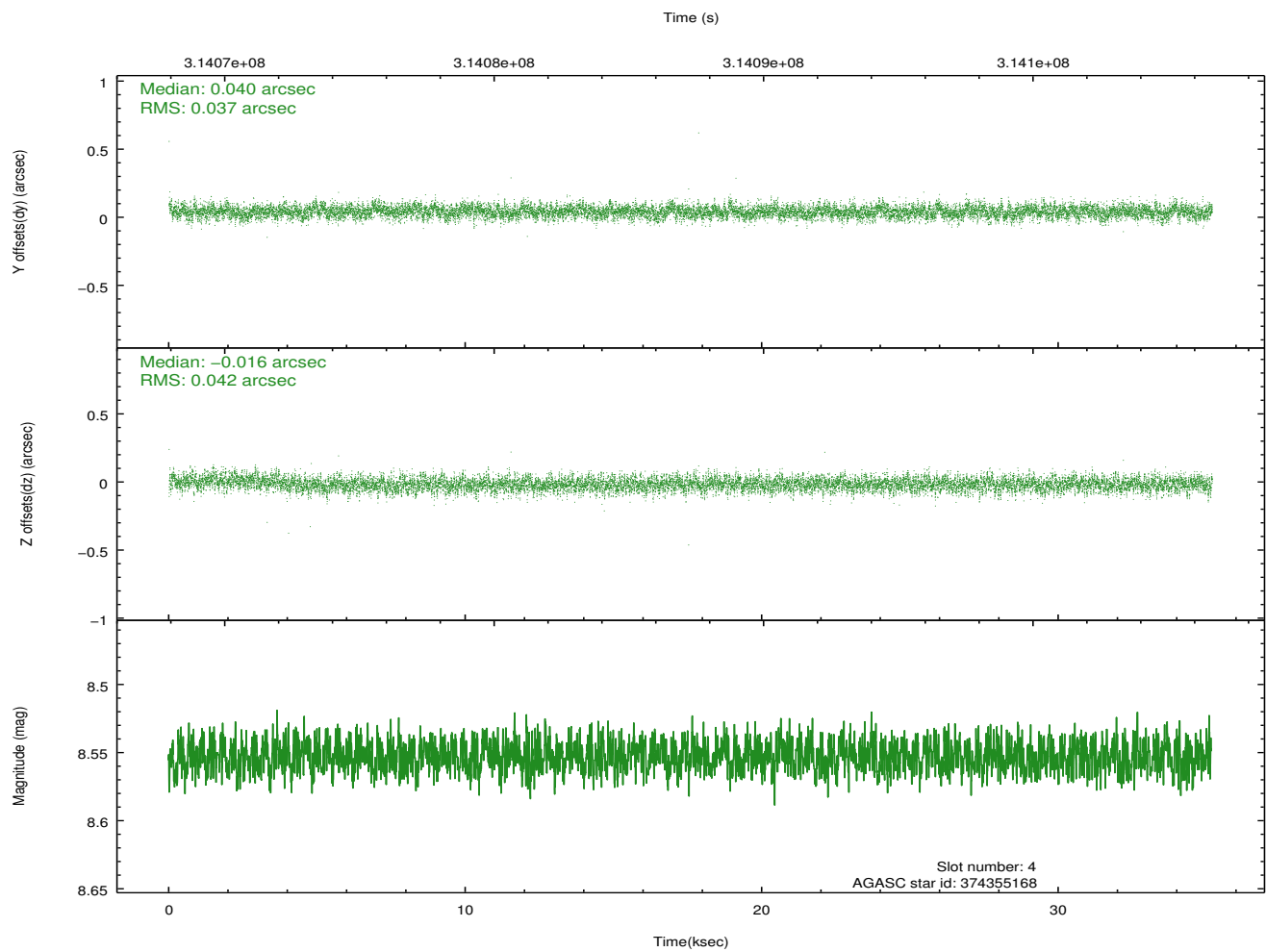
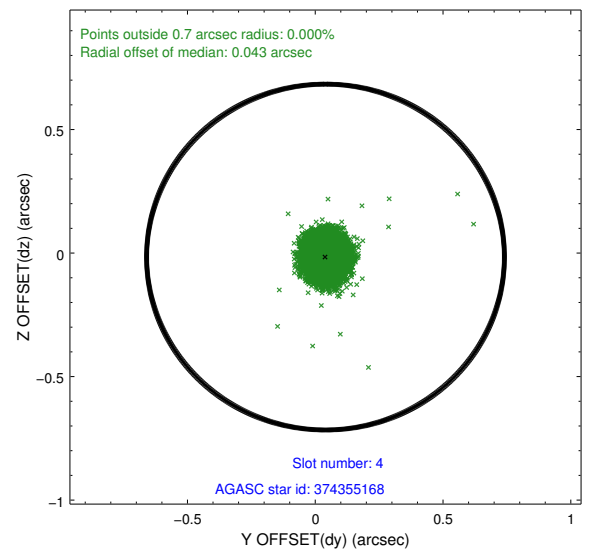
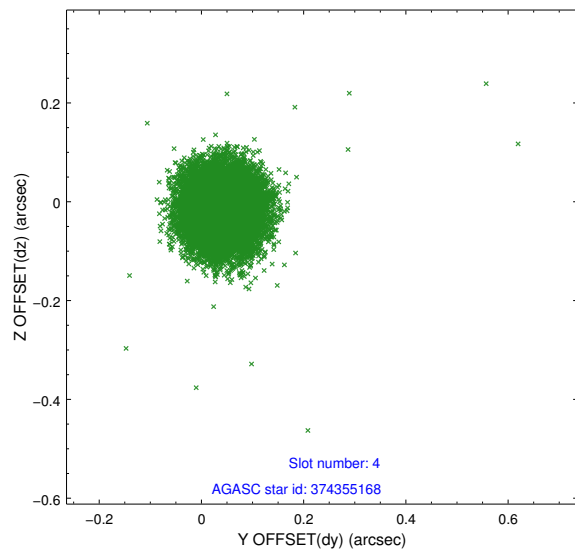
slot	status	id	mag	n_pts	med_dy	med_dz	dr1	dr2	ra	dec	mean_y	mean_z
0	FID	ACIS-S-2	7.10	8581	-0.033	-0.066	0.009	0.015	0.000000	0.000000	-766.07	-1734.84
1	FID	ACIS-S-4	7.20	8582	0.163	0.034	0.012	0.022	0.000000	0.000000	2147.39	173.69
2	FID	ACIS-S-5	7.23	8583	-0.160	0.041	0.010	0.017	0.000000	0.000000	-1818.98	167.42
3	GUIDE	373826120	8.89	17156	0.038	0.036	0.091	0.145	49.738165	41.186341	382.99	1288.31
4	GUIDE	374355168	8.55	17151	0.040	-0.016	0.059	0.096	48.517523	41.466988	770.82	-2140.52
5	GUIDE	374358688	9.27	17140	0.053	0.070	0.102	0.163	49.259903	42.100043	-2110.93	-1212.88
6	GUIDE	373817952	8.74	17159	-0.031	-0.103	0.088	0.138	49.913424	40.978510	873.82	2026.41
7	GUIDE	376070040	8.40	17148	-0.098	0.017	0.071	0.116	50.072031	41.897206	-2320.86	1070.11

2.4 Star Slots

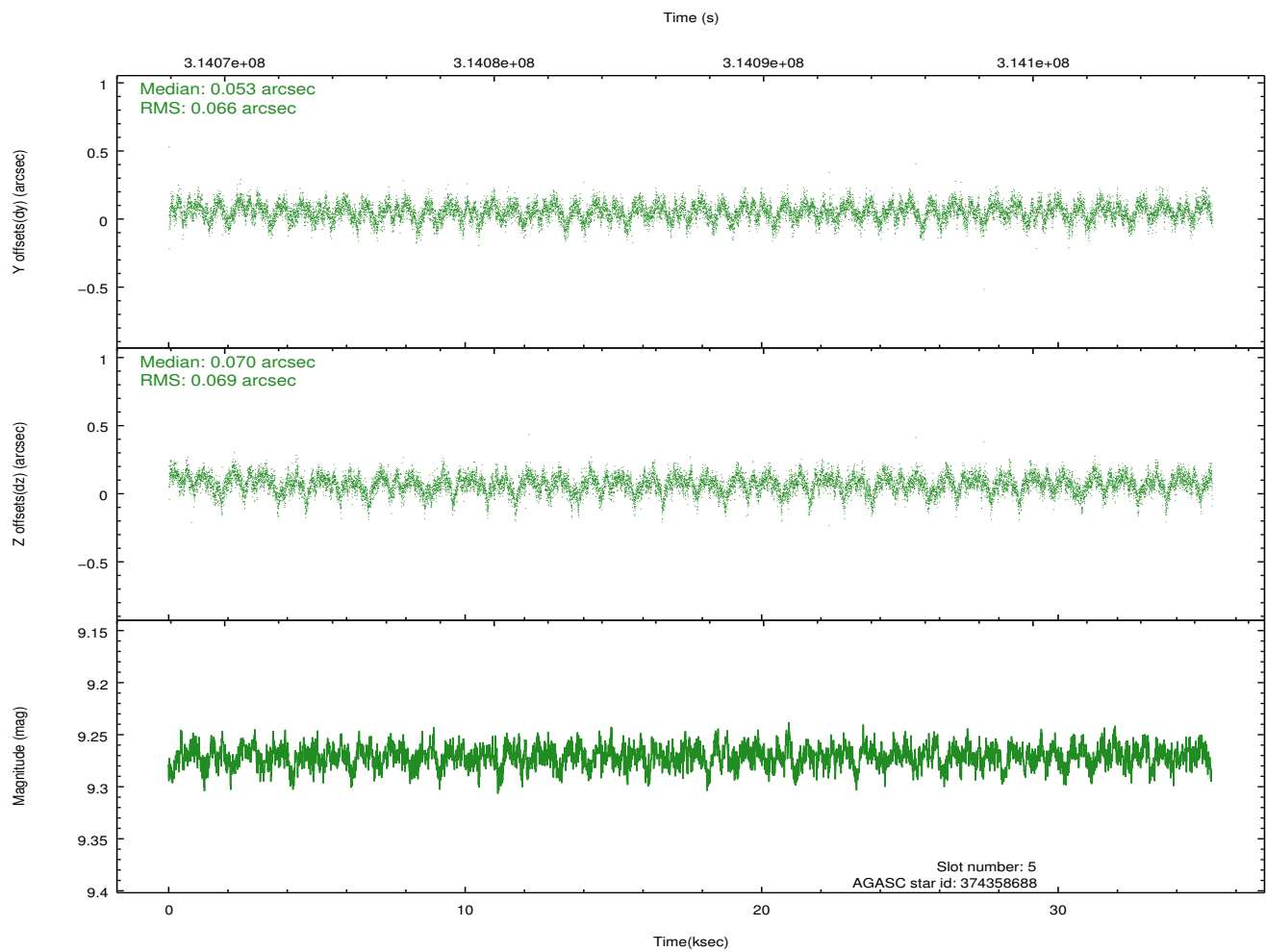
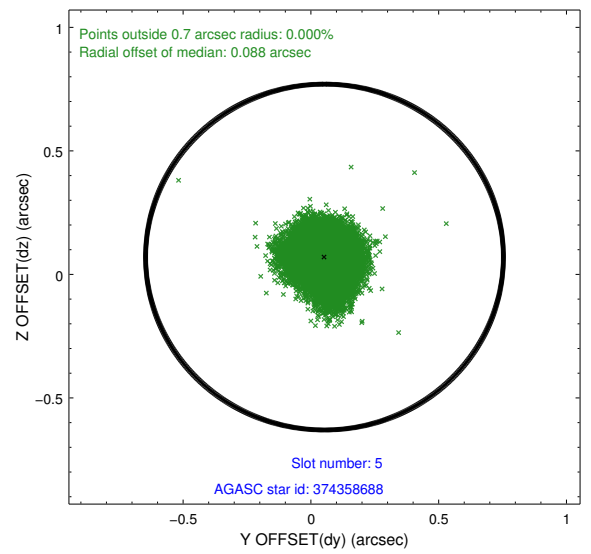
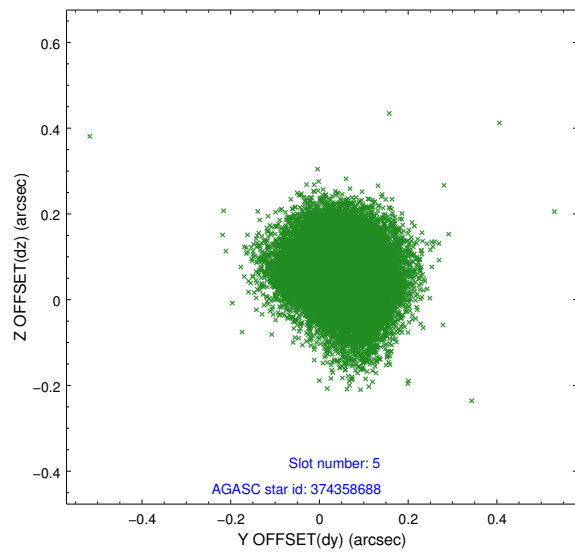
2.4.1 Slot 3



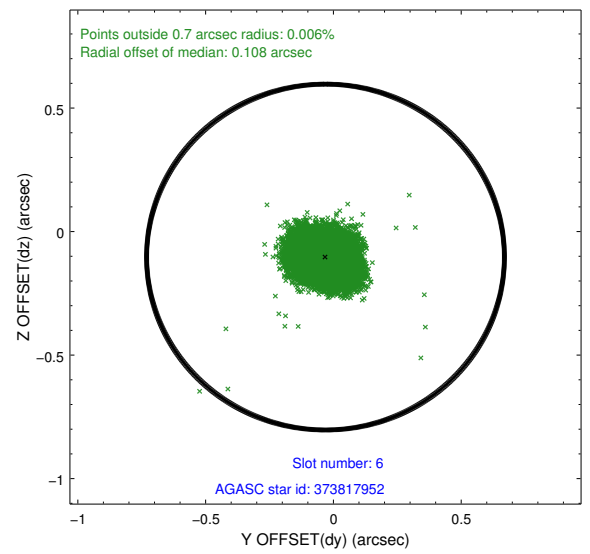
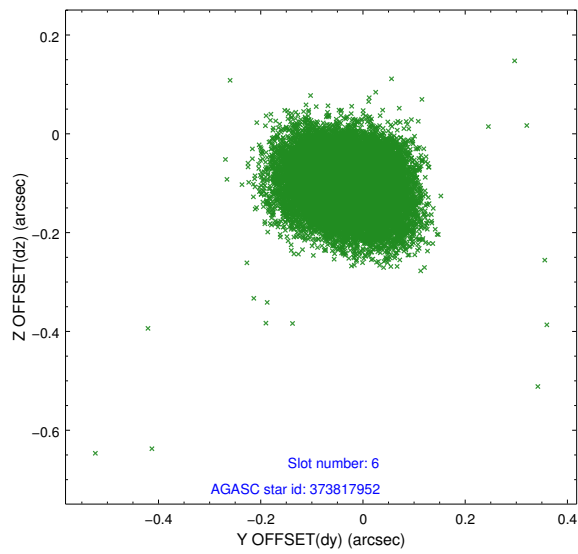
2.4.2 Slot 4



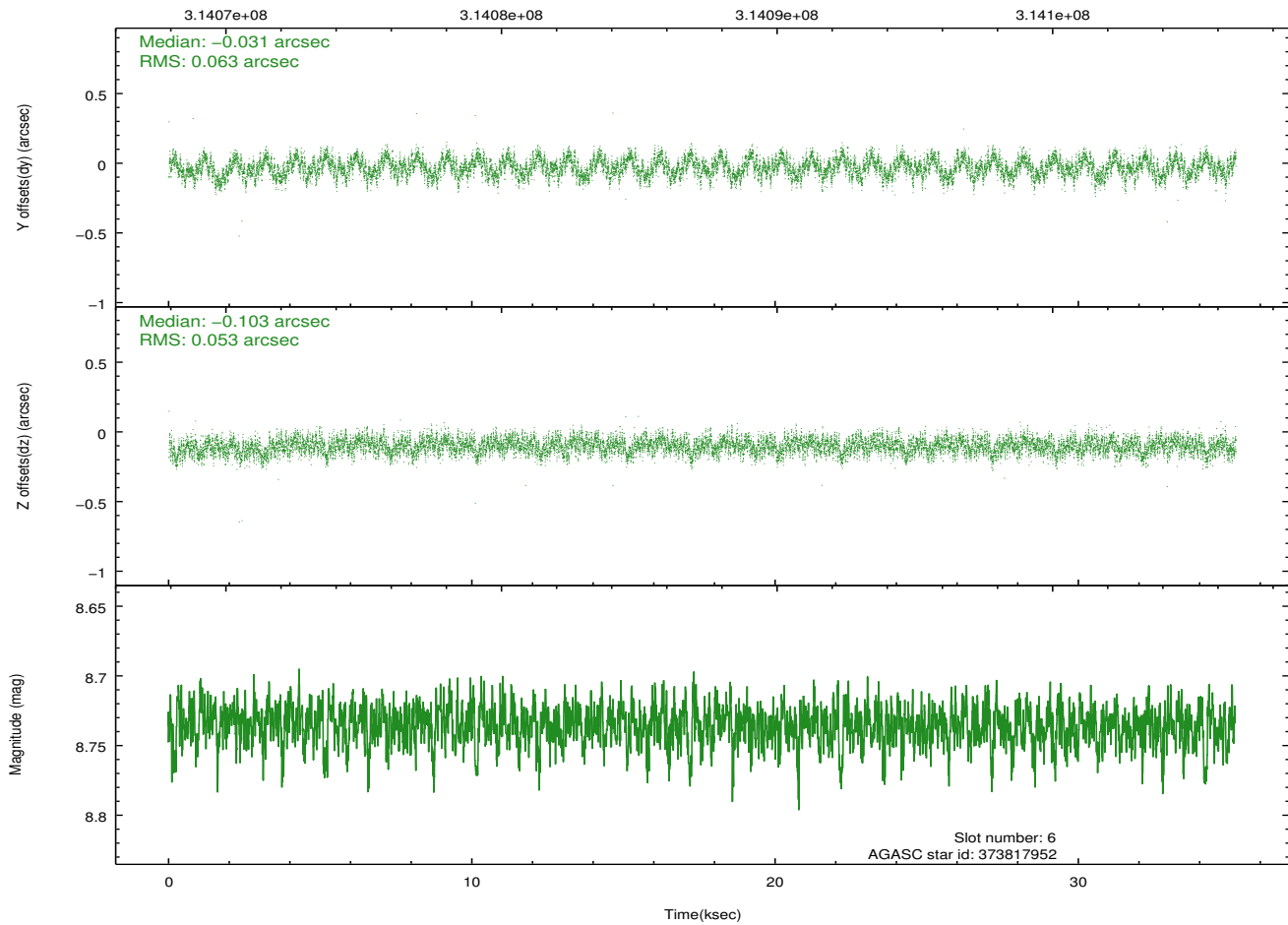
2.4.3 Slot 5



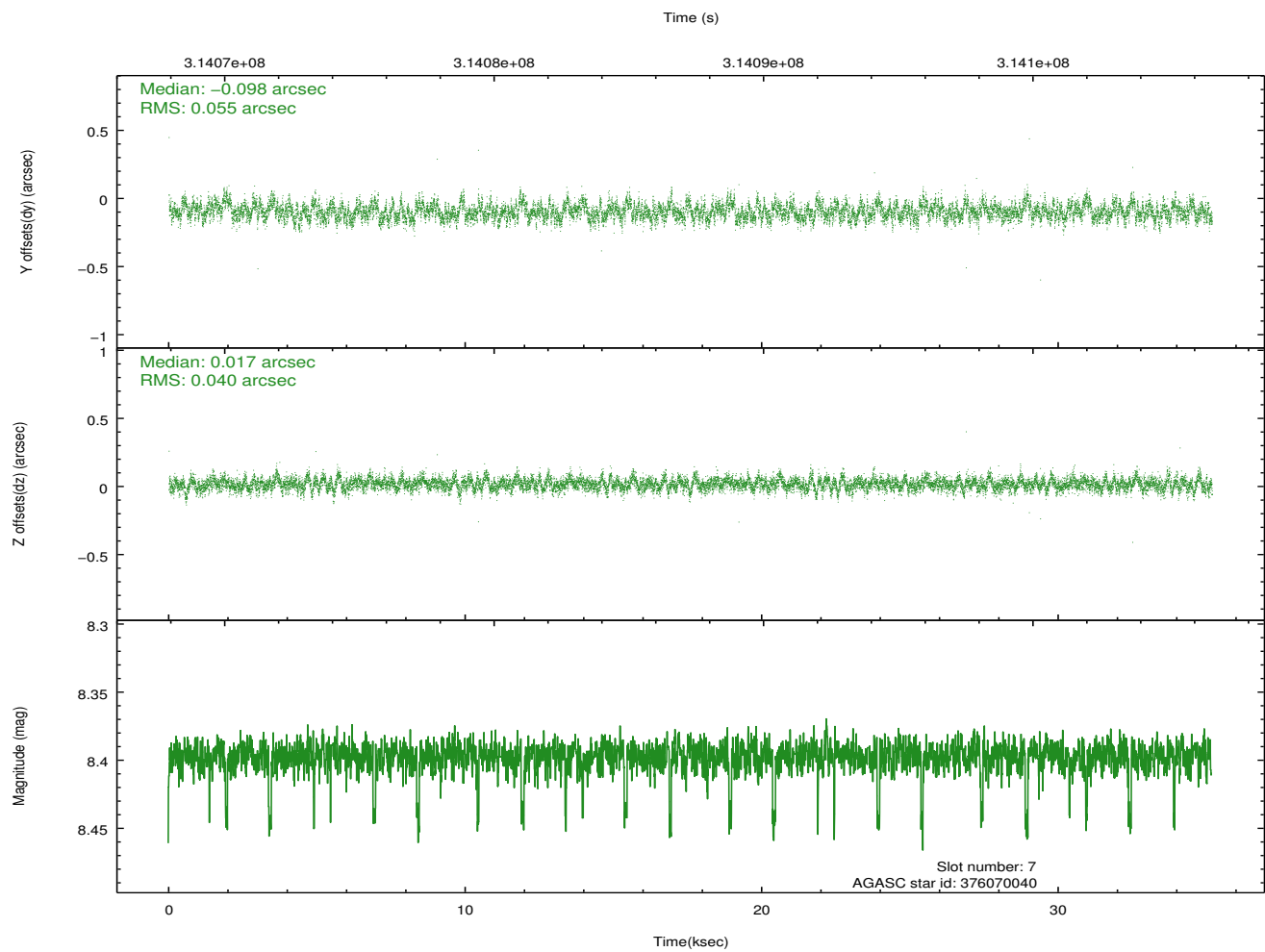
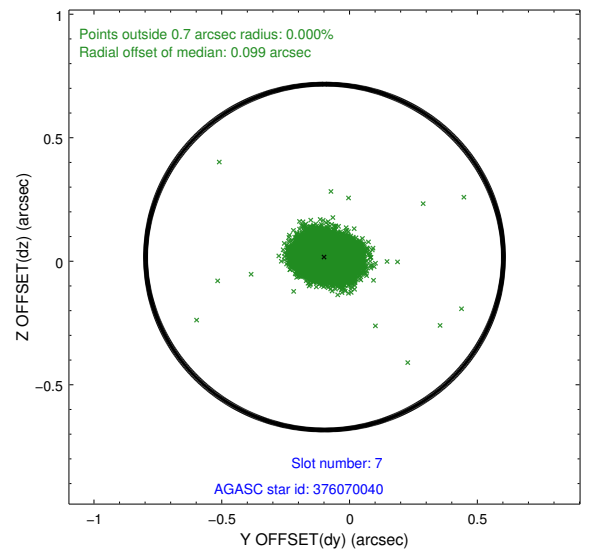
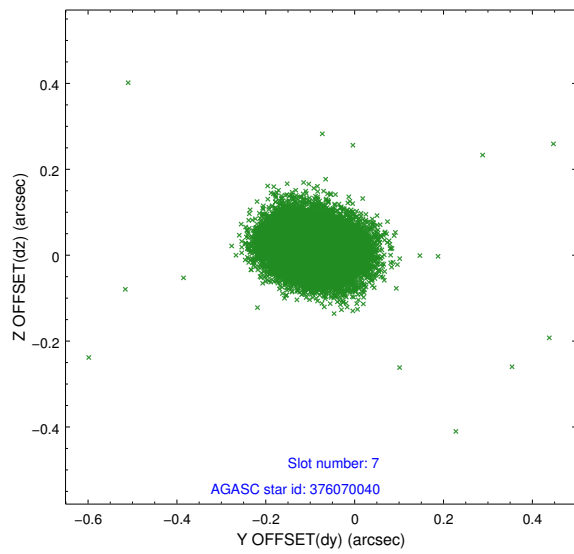
2.4.4 Slot 6



Time (s)

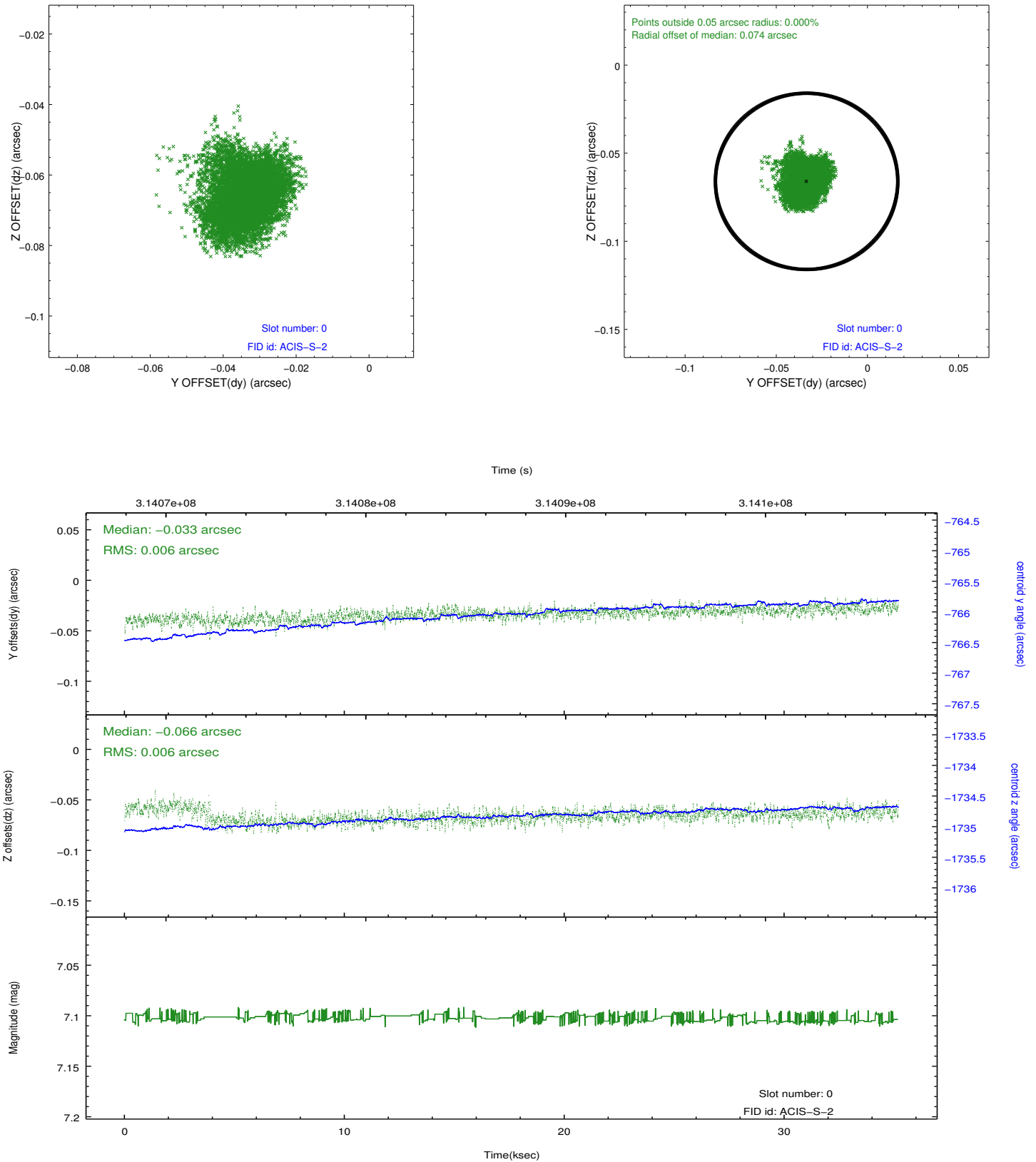


2.4.5 Slot 7

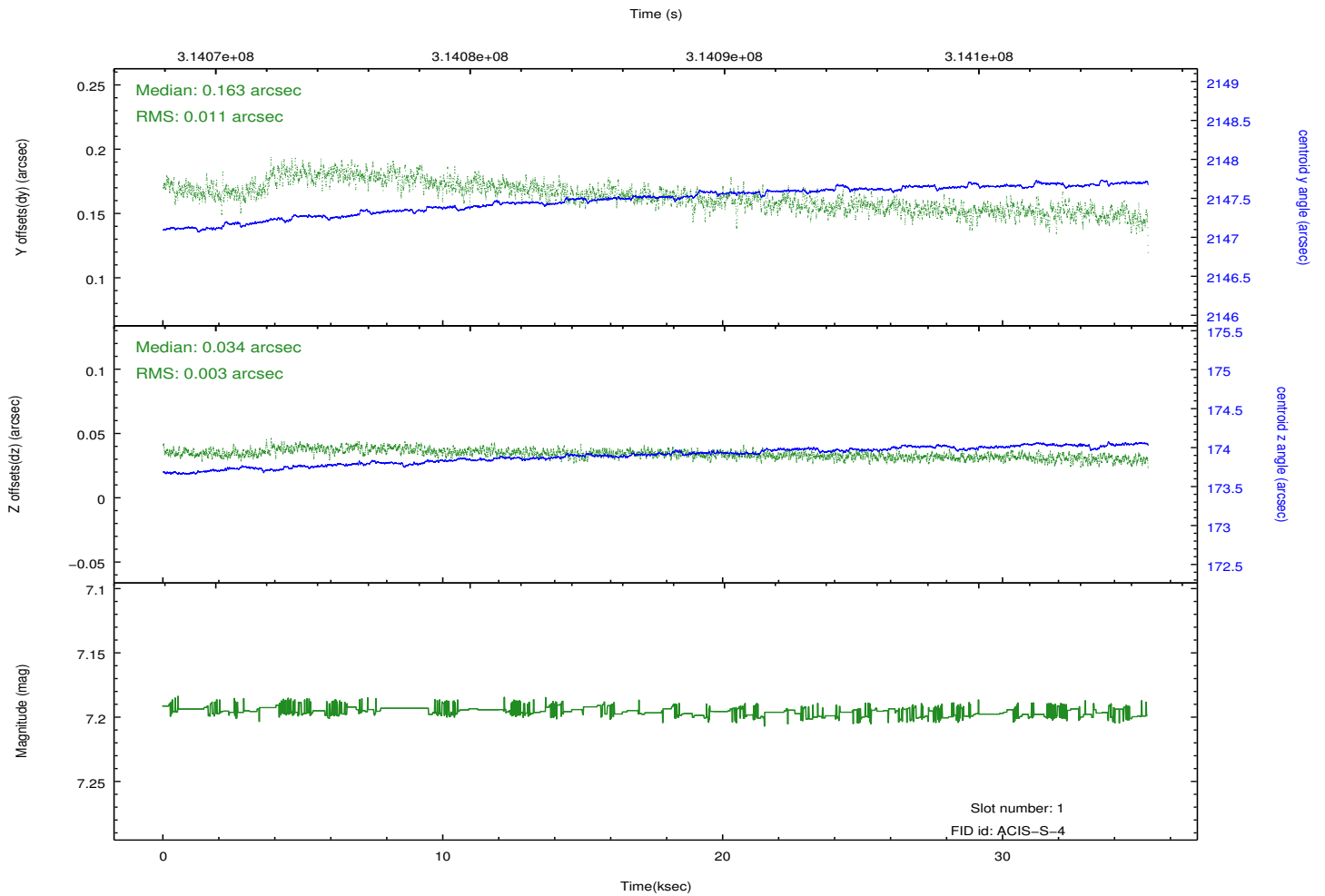
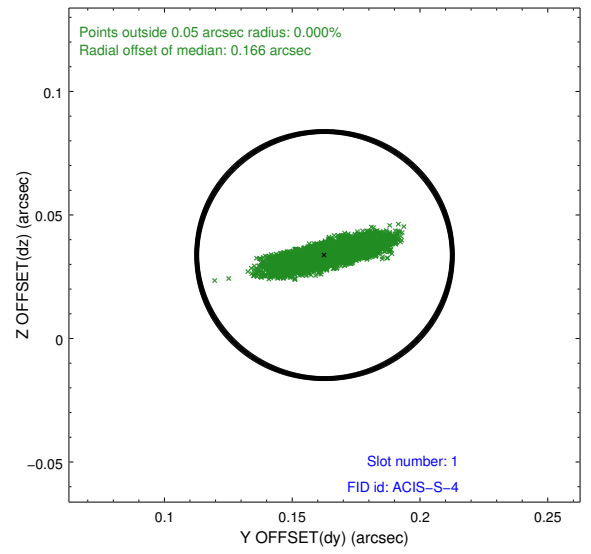
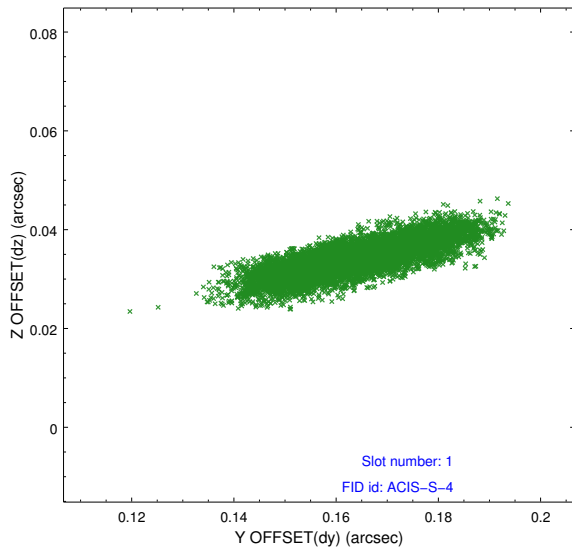


2.5 FID Slots

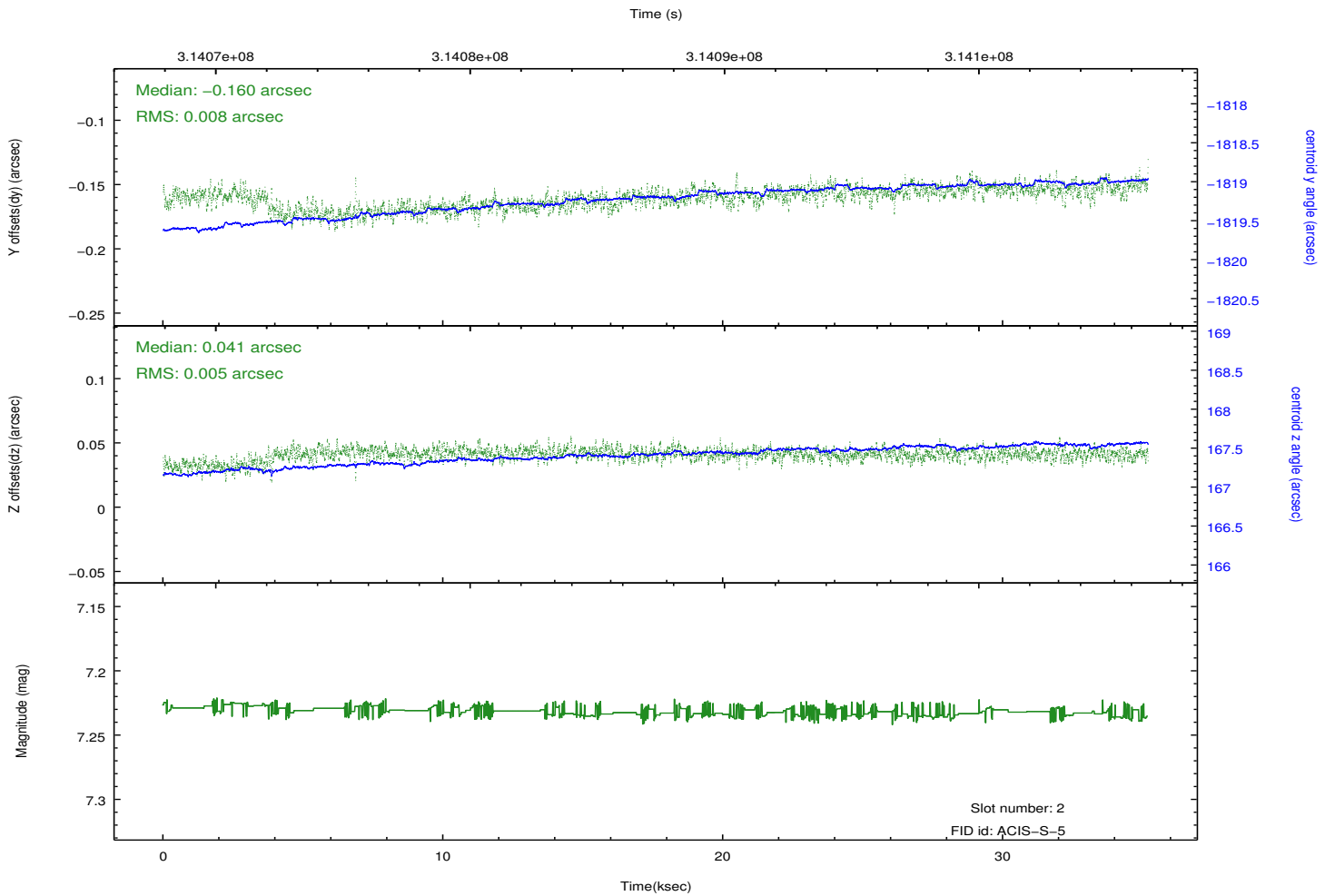
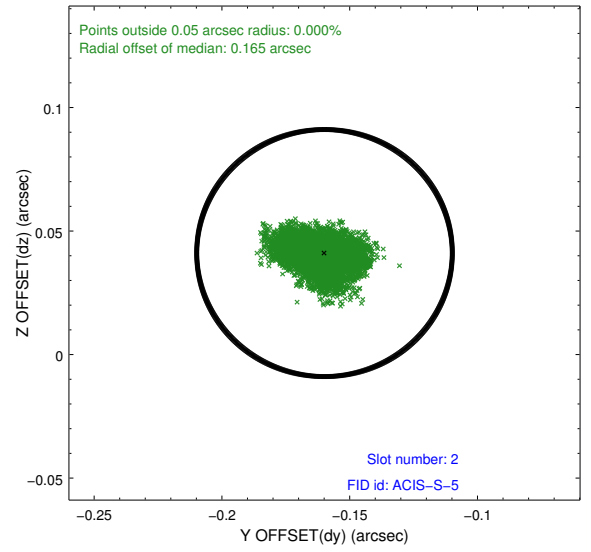
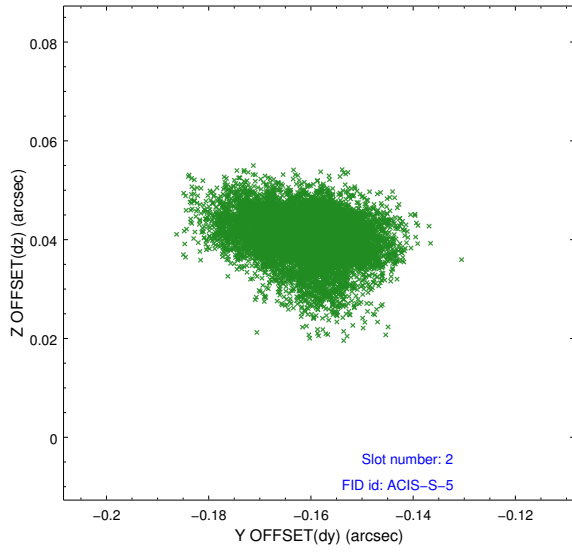
2.5.1 Slot 0



2.5.2 Slot 1



2.5.3 Slot 2



A Summary

A.1 Status

V&V Scientist	Beth Sundheim
V&V Date (YYYY-MM-DD)	2012.05.08
V&V Edition	1
V&V Disposition and Status	OK
V&V Charge Time	35.1807998

A.2 Comments