

# V&V Reference Report

## L2 ASCDS Version : 8.4.4

Observation 9487 - L2 Version 2  
Chandra X-Ray Center

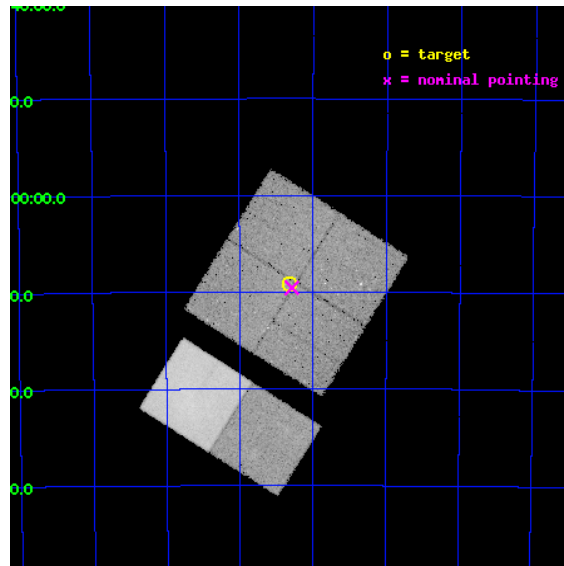
L2 Processing Date : May 18 2012

## Contents

<b>1</b>	<b>Front</b>	<b>2</b>
<b>2</b>	<b>OBI</b>	<b>3</b>
2.1	OBI . . . . .	3
2.1.1	Images . . . . .	3
2.1.2	Bias . . . . .	3
2.1.3	Parameters . . . . .	4
2.1.4	Events . . . . .	4
2.2	Compared Parameters . . . . .	5
2.3	Aspect . . . . .	6
2.4	Star Slots . . . . .	9
2.4.1	Slot 3 . . . . .	9
2.4.2	Slot 4 . . . . .	10
2.4.3	Slot 5 . . . . .	11
2.4.4	Slot 6 . . . . .	12
2.4.5	Slot 7 . . . . .	13
2.5	FID Slots . . . . .	14
2.5.1	Slot 0 . . . . .	14
2.5.2	Slot 1 . . . . .	15
2.5.3	Slot 2 . . . . .	16
<b>A</b>	<b>Summary</b>	<b>17</b>
A.1	Status . . . . .	17
A.2	Comments . . . . .	17

# 1 Front

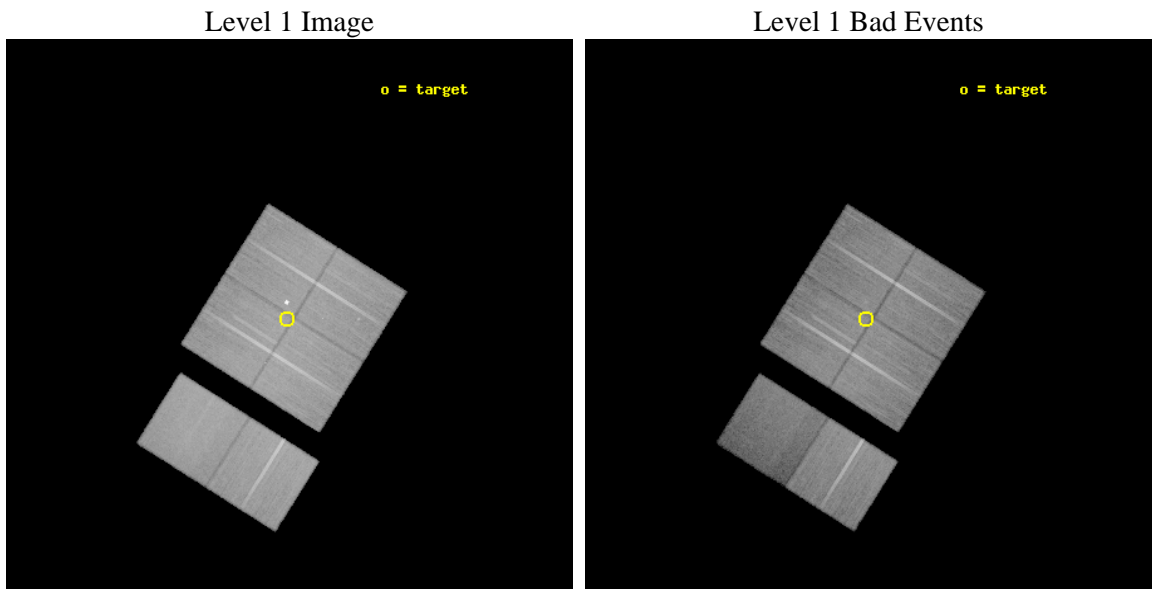
seq_num	900824	Sequence number
obs_id	9487	Observation id
title	The Great Nebula in Carina: Protoplanetary Disks to Starburst Galaxies	Proposal title
observer	Dr. Leisa Townsley	Principal investigator
object	Carina Clusters Ptg 7	Source name
dtcycle	0	&#160
cycle	P	events from which exps? Prim/Second/Both
ra_targ	160.832083	Observer's specified target RA [deg]
dec_targ	-59.153139	Observer's specified target Dec [deg]
ra_nom	160.82182226104	Nominal RA [deg]
dec_nom	-59.159278808412	Nominal Dec [deg]
roll_nom	212.19987040651	Nominal Roll [deg]
revision	2	Processing version of data
ontime	39171.117873669	Sum of GTIs [s]
livetime	38675.109593137	Livetime [s]
ontime0	39177.599854112	Sum of GTIs [s]
ontime1	39177.599854112	Sum of GTIs [s]
ontime2	39174.358853817	Sum of GTIs [s]
ontime3	39171.117873669	Sum of GTIs [s]
ontime6	39174.358883798	Sum of GTIs [s]
ontime7	39177.599854112	Sum of GTIs [s]
l2events	282049	Number of level 2 events



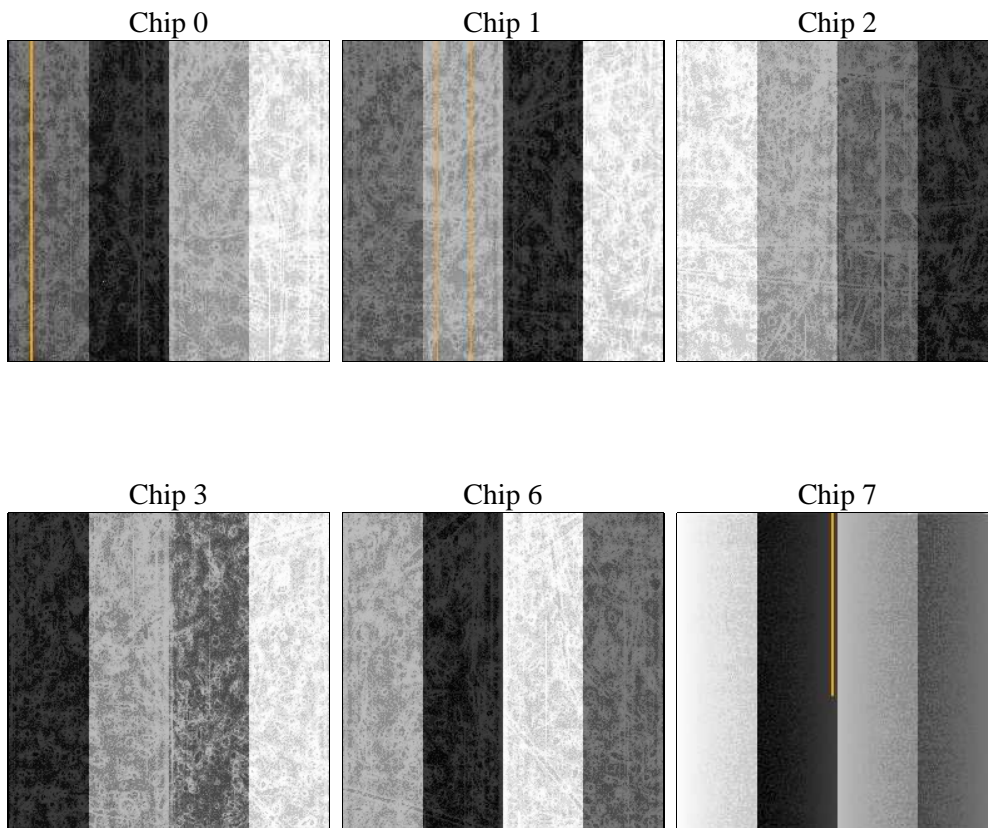
## 2 OBI

### 2.1 OBI

#### 2.1.1 Images



#### 2.1.2 Bias



### 2.1.3 Parameters

obi_num	0	Obi number	sched_exp_time	39000.000000	[s] Scheduled observation exposure time
ascdsver	8.4.4	Processing system revision	ontime	39171.117873669	Sum of GTIs [s]
caldbver	4.4.9	&#160	ontime0	39177.599854112	Sum of GTIs [s]
date	2012-05-18T15:06:28	Date and time of file creation	ontime1	39177.599854112	Sum of GTIs [s]
revision	2	Processing version of data	ontime2	39174.358853817	Sum of GTIs [s]
			ontime3	39171.117873669	Sum of GTIs [s]
			ontime6	39174.358883798	Sum of GTIs [s]
			ontime7	39177.599854112	Sum of GTIs [s]
			l1events	1773613	Number of level 1 events

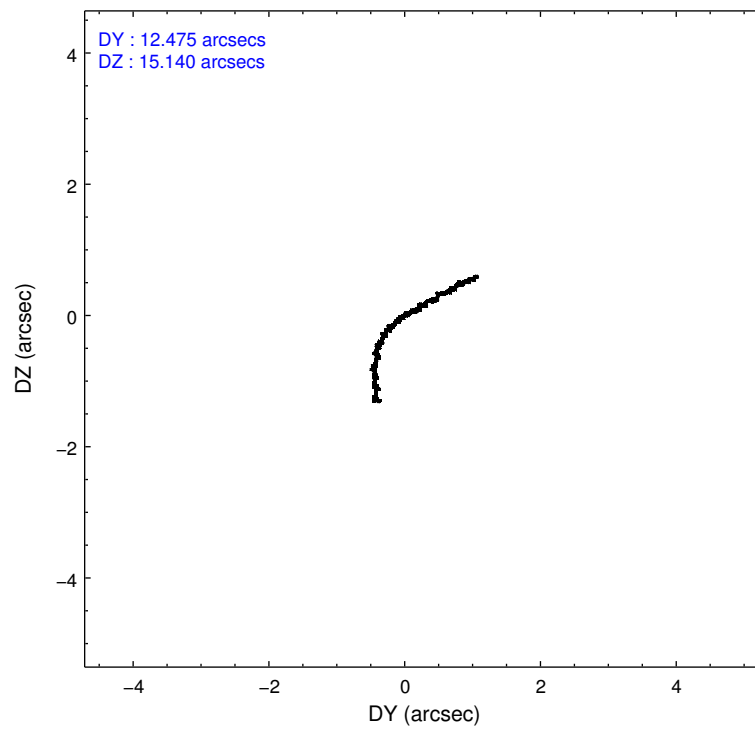
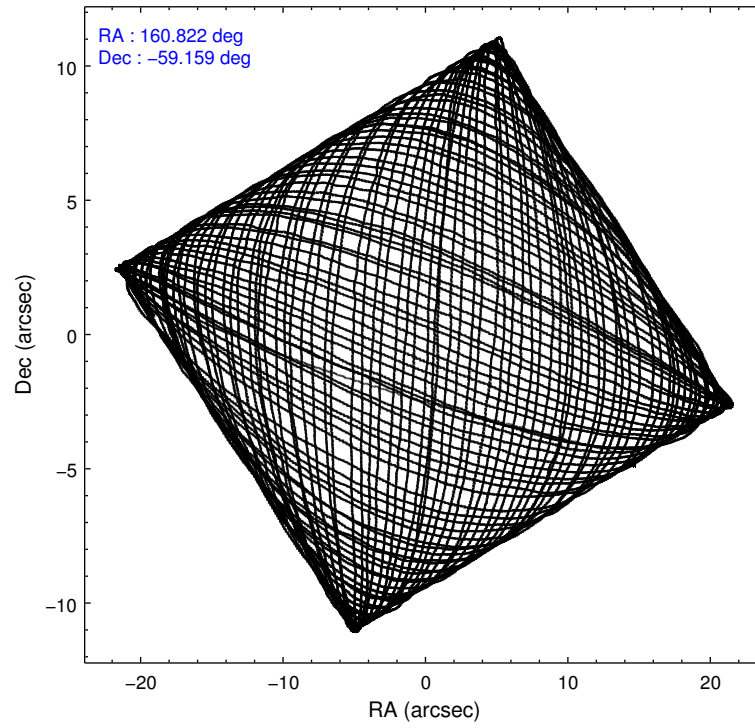
### 2.1.4 Events

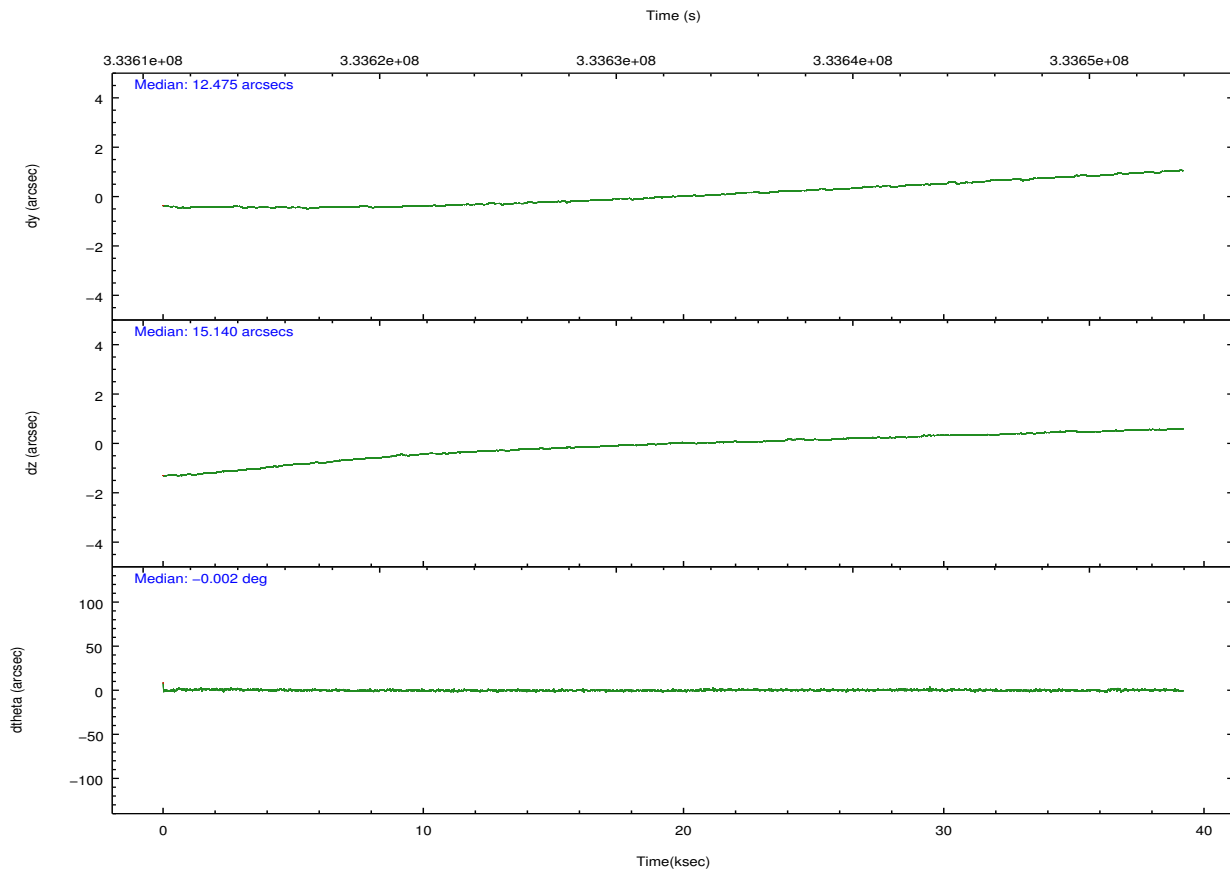
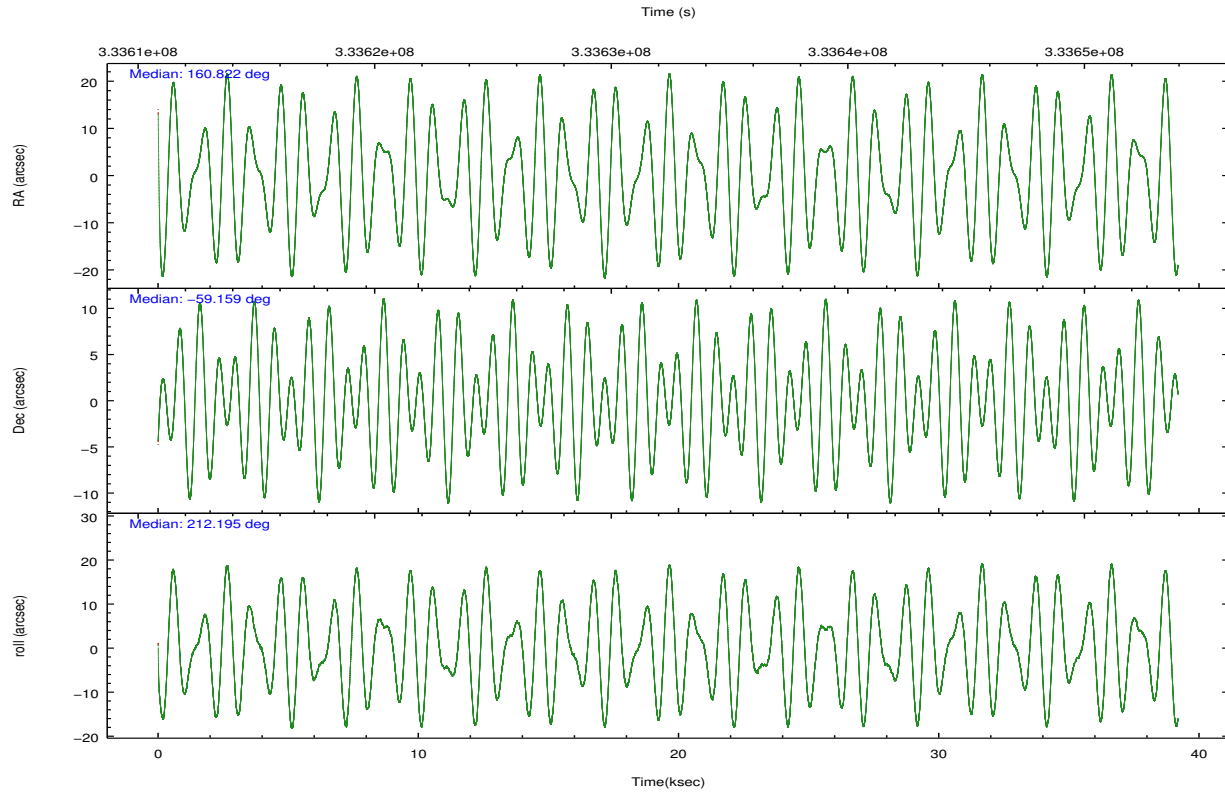
	ccd 0	ccd 1	ccd 2	ccd 3	ccd 6	ccd 7		ccd 0	ccd 1	ccd 2	ccd 3	ccd 6	ccd 7
level 1 events	279981	286831	314142	292397	305581	294681	grade 0 events	14027	24251	12848	12608	14611	17980
rejected events	247105	242459	283068	262302	270901	143259		5%	8%	4%	4%	4%	6%
rejected %	88%	84%	90%	89%	88%	48%	grade 1 events	178	243	210	194	180	440
								0%	0%	0%	0%	0%	0%
							grade 2 events	7480	7120	7073	6170	7161	32971
								2%	2%	2%	2%	2%	11%
							grade 3 events	3286	3470	3061	3016	3368	14753
								1%	1%	0%	1%	1%	5%
							grade 4 events	3010	3408	3130	3051	3299	14551
								1%	1%	0%	1%	1%	4%
							grade 5 events	8525	9730	8092	10251	10545	30466
								3%	3%	2%	3%	3%	10%
							grade 6 events	5100	6152	4980	5269	6262	71281
								1%	2%	1%	1%	2%	24%
							grade 7 events	238375	232457	274748	251838	260155	112239
								85%	81%	87%	86%	85%	38%

## 2.2 Compared Parameters

Parameter	Planned	Actual	Parameter	Planned	Actual
Instrument	ACIS	ACIS	Obspar format version number	7	7
Detector	ACIS-012367	ACIS-012367	Obspar file type	PREDICTED	ACTUAL
Grating	NONE	NONE	Obspar update status	NONE	UPDATED
Data mode	VFAINT	VFAINT	CCD I0 on	Y	Y
Observation mode	POINTING	POINTING	CCD I1 on	Y	Y
[deg] Pointing RA	160.846656	160.8218222610396	CCD I2 on	Y	Y
[deg] Pointing Dec	-59.134898	-59.15927880841248	CCD I3 on	Y	Y
[deg] Pointing Roll	212.012505	212.1998704065079	CCD S0 on	N	N
[mm] SIM focus pos	-0.782348	-0.7809083437167272	CCD S1 on	N	N
[mm] SIM defocus	0	0.001439871863259334	CCD S2 on	O1	Y
[mm] SIM translation stage pos	-233.592463	-233.5874344608287	CCD S3 on	O2	Y
[mm] SIM translation stage offset	0	-0.005018542100998502	CCD S4 on	N	N
[s] Observation start time (MET)	333612990.184000	333611903.20835	CCD S5 on	N	N
Observation start date	2008-07-28T06:15:25	2008-07-28T05:58:23	Number of optional ACIS chips dropped	0	0
[s] Observation end time (MET)	333651990.184000	333652845.81036	On-chip summing requested	N	N
Observation end date	2008-07-28T17:05:25	2008-07-28T17:20:45	Subarray requested	NONE	NONE
Read mode	TIMED	TIMED	Alternating exposures requested	N	N
			[s] Primary exposure time	0.000000	3.2

## 2.3 Aspect



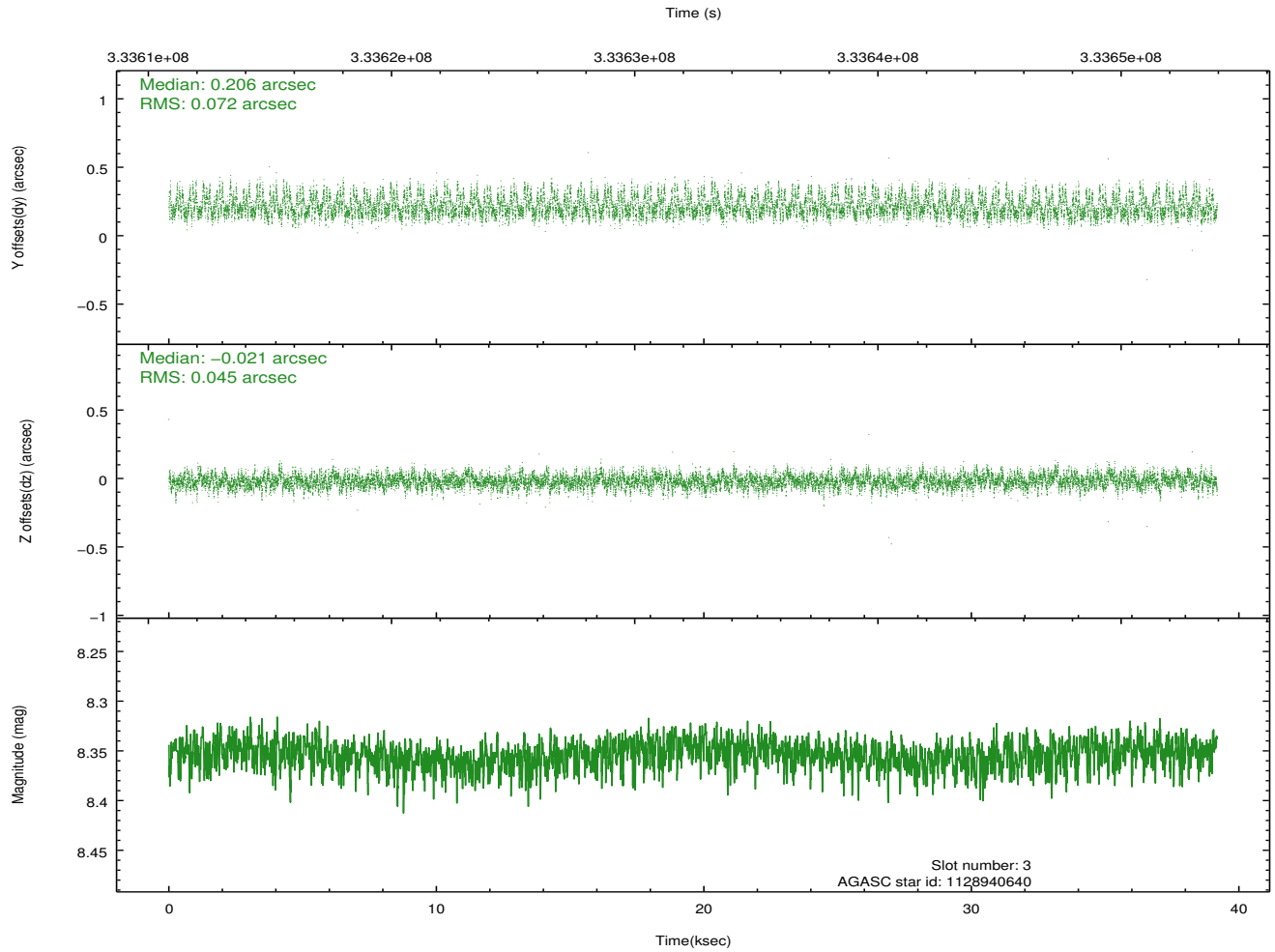
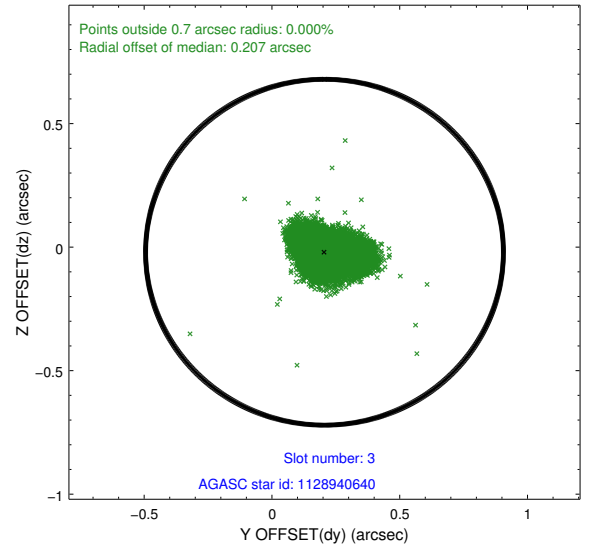
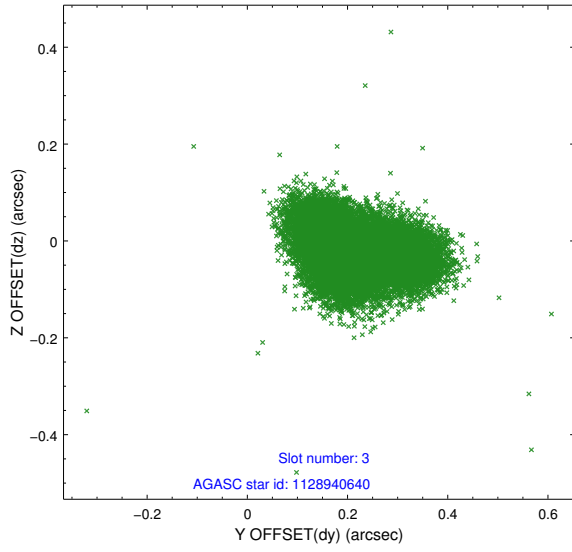


### Slot Statistics

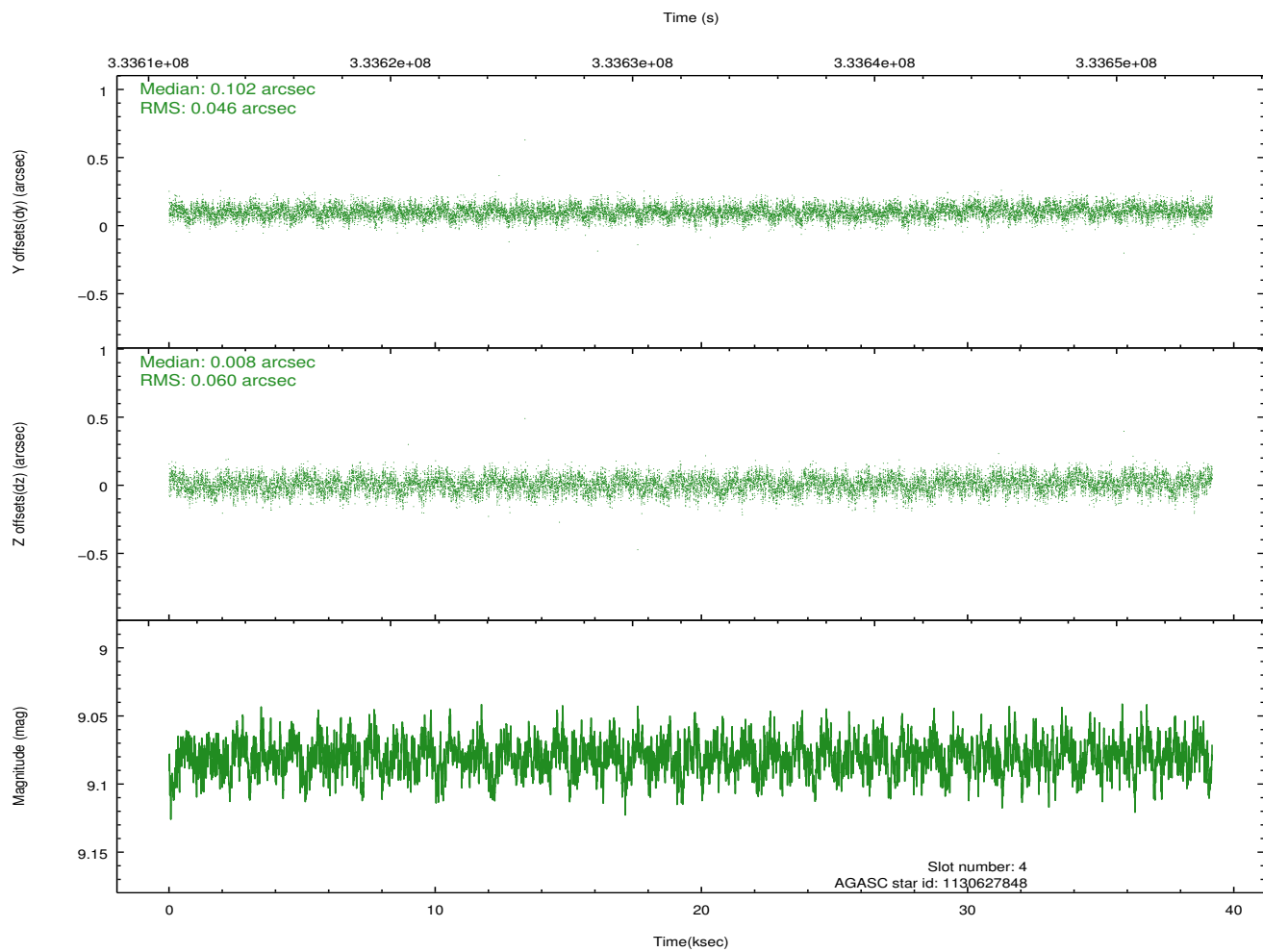
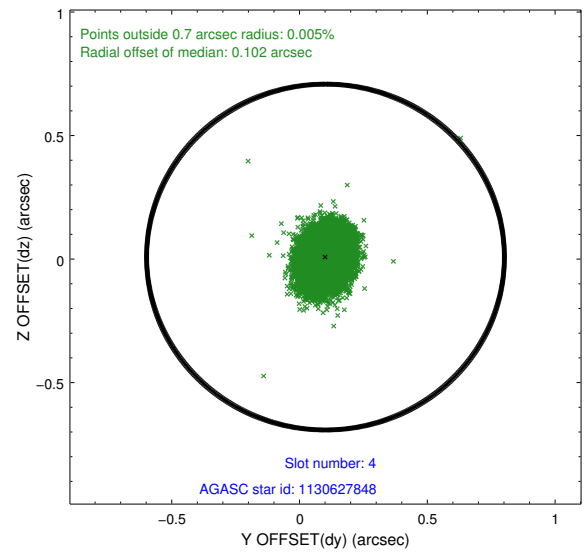
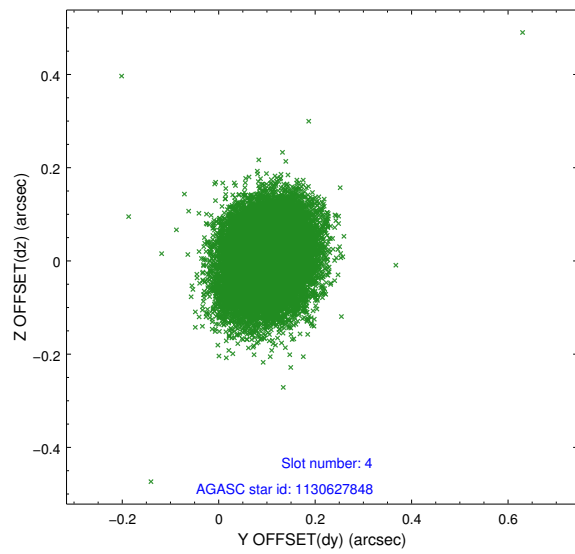
slot	status	id	mag	n_pts	med_dy	med_dz	dr1	dr2	ra	dec	mean_y	mean_z
0	FID	ACIS-I-2	6.93	9554	-0.072	-0.072	0.015	0.025	0.000000	0.000000	-767.28	-845.05
1	FID	ACIS-I-4	6.94	9558	0.162	0.066	0.013	0.021	0.000000	0.000000	2146.99	1061.26
2	FID	ACIS-I-5	6.99	9557	-0.191	0.076	0.014	0.022	0.000000	0.000000	-1821.21	1059.13
3	GUIDE	1128940640	8.35	19108	0.206	-0.021	0.089	0.149	159.517239	-59.074495	1983.72	-1467.16
4	GUIDE	1130627848	9.08	19106	0.102	0.008	0.080	0.129	160.935287	-58.470864	-1408.12	-1938.54
5	GUIDE	1130632200	7.55	19112	-0.084	0.007	0.062	0.100	161.433843	-59.407820	-388.90	1407.41
6	GUIDE	1130643264	6.63	19116	-0.026	-0.047	0.077	0.123	160.322990	-59.676912	1843.51	1153.47
7	GUIDE	1130629840	8.21	19112	-0.208	0.055	0.067	0.111	161.087793	-58.400936	-1785.73	-1998.58

## 2.4 Star Slots

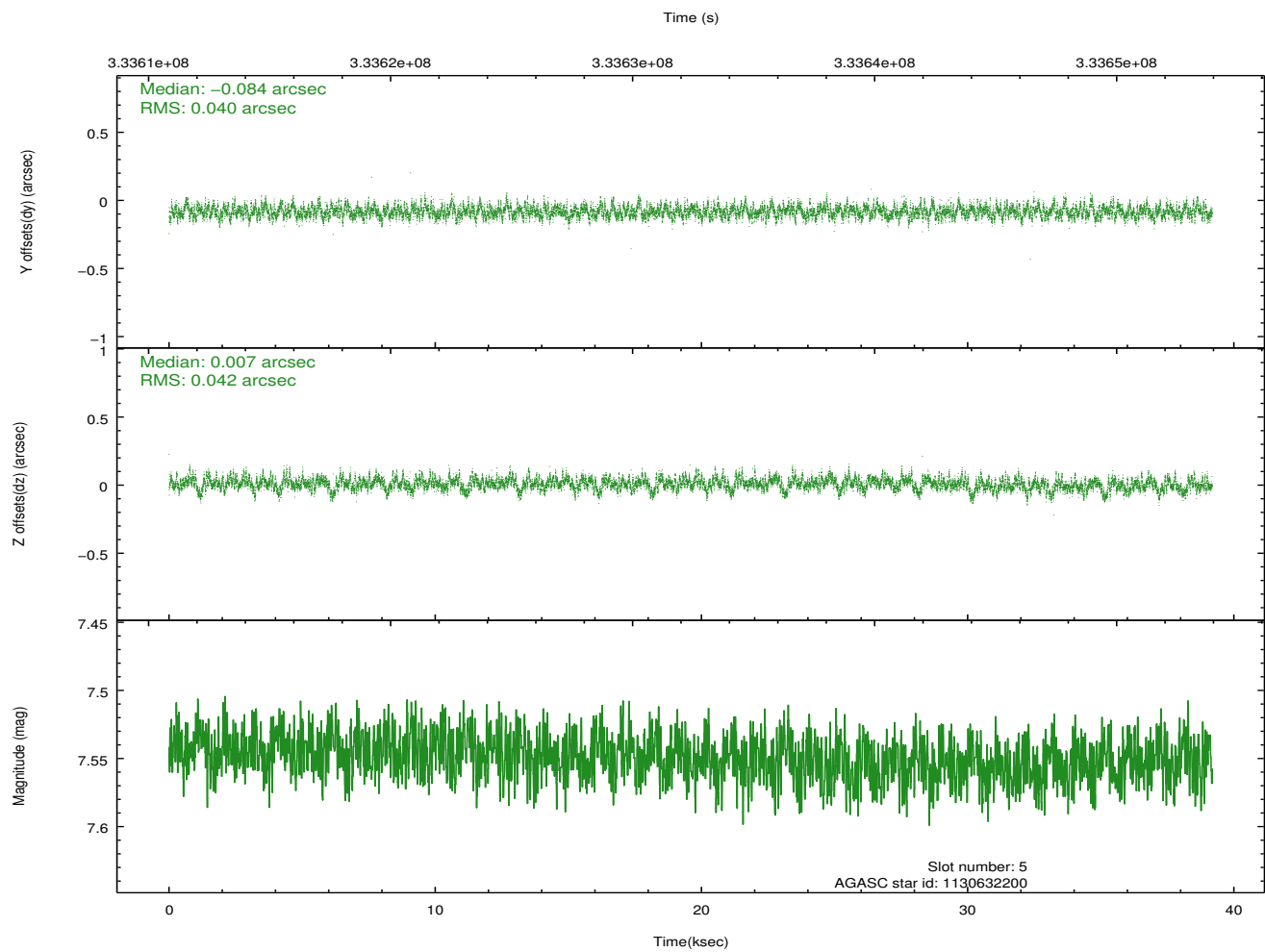
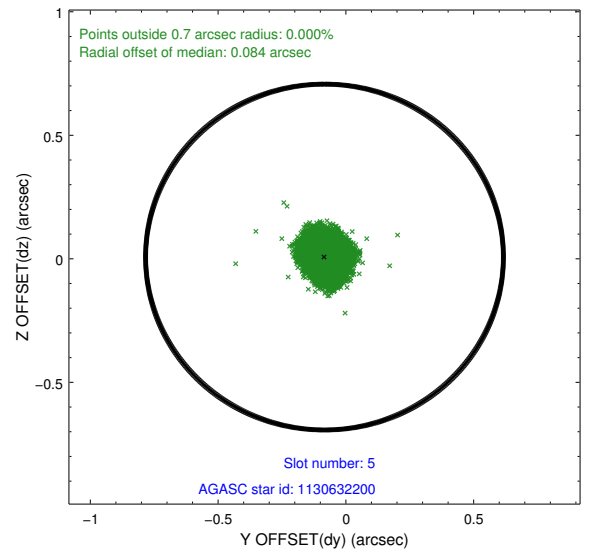
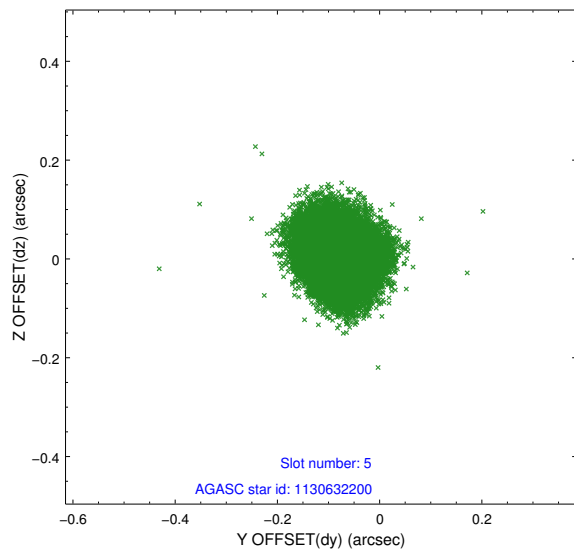
### 2.4.1 Slot 3



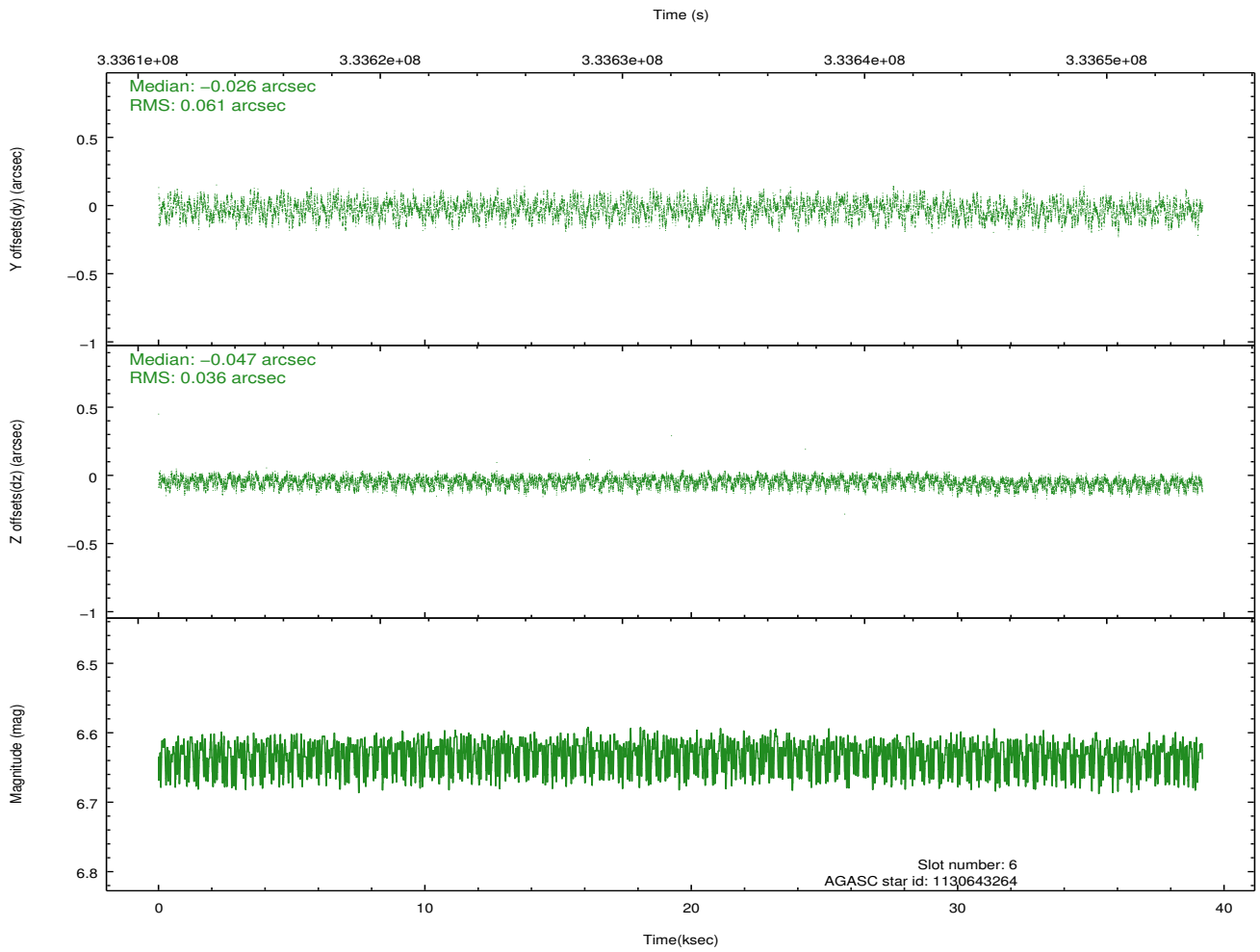
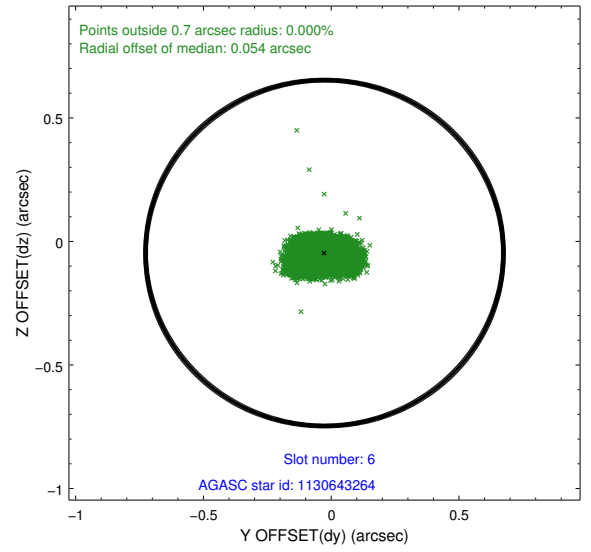
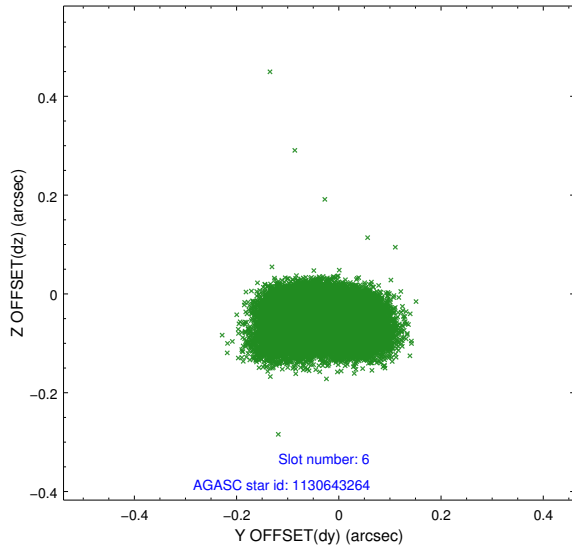
## 2.4.2 Slot 4



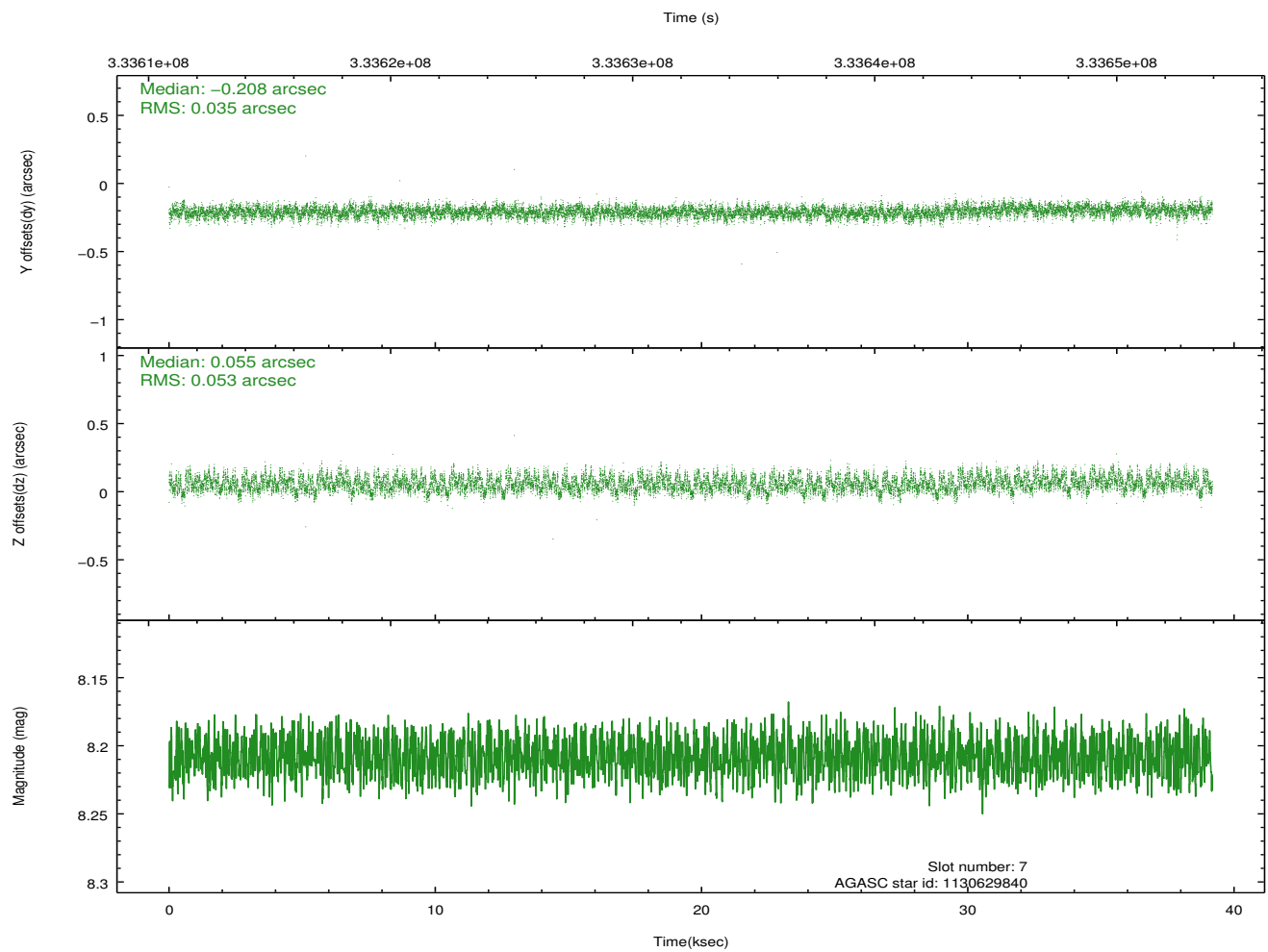
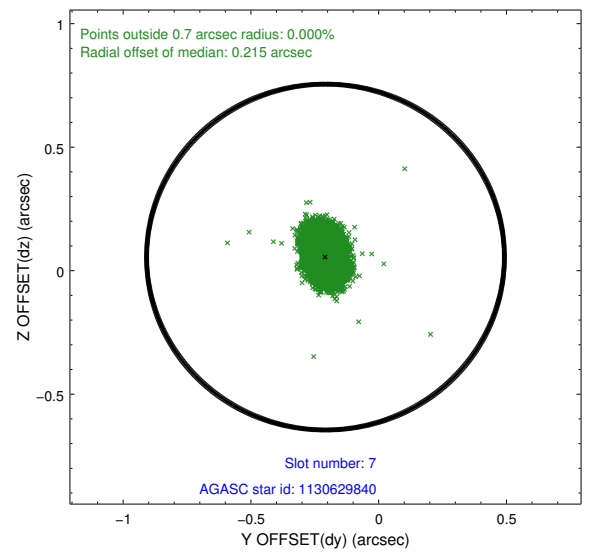
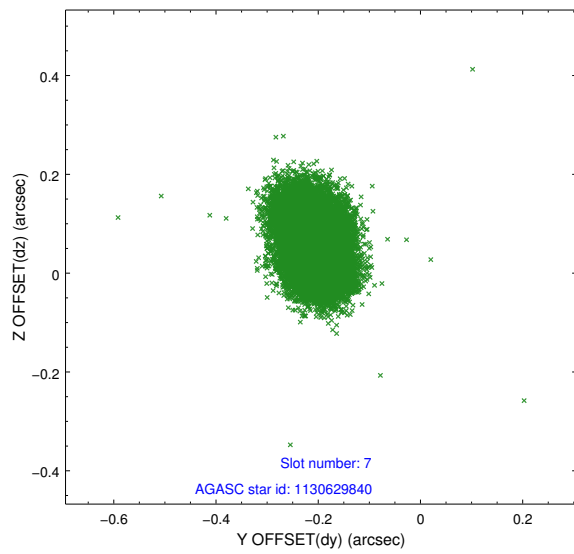
### 2.4.3 Slot 5



### 2.4.4 Slot 6

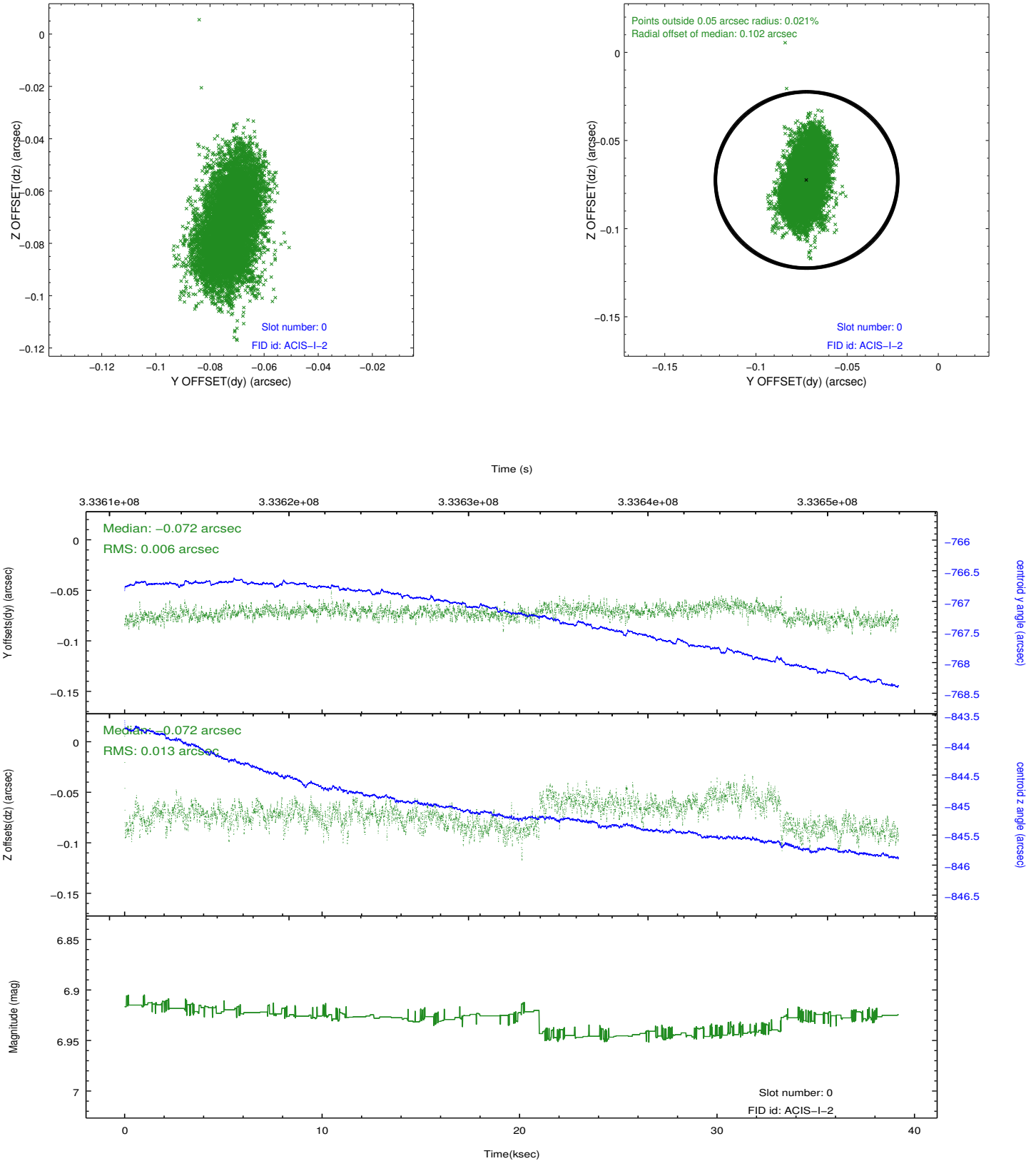


## 2.4.5 Slot 7

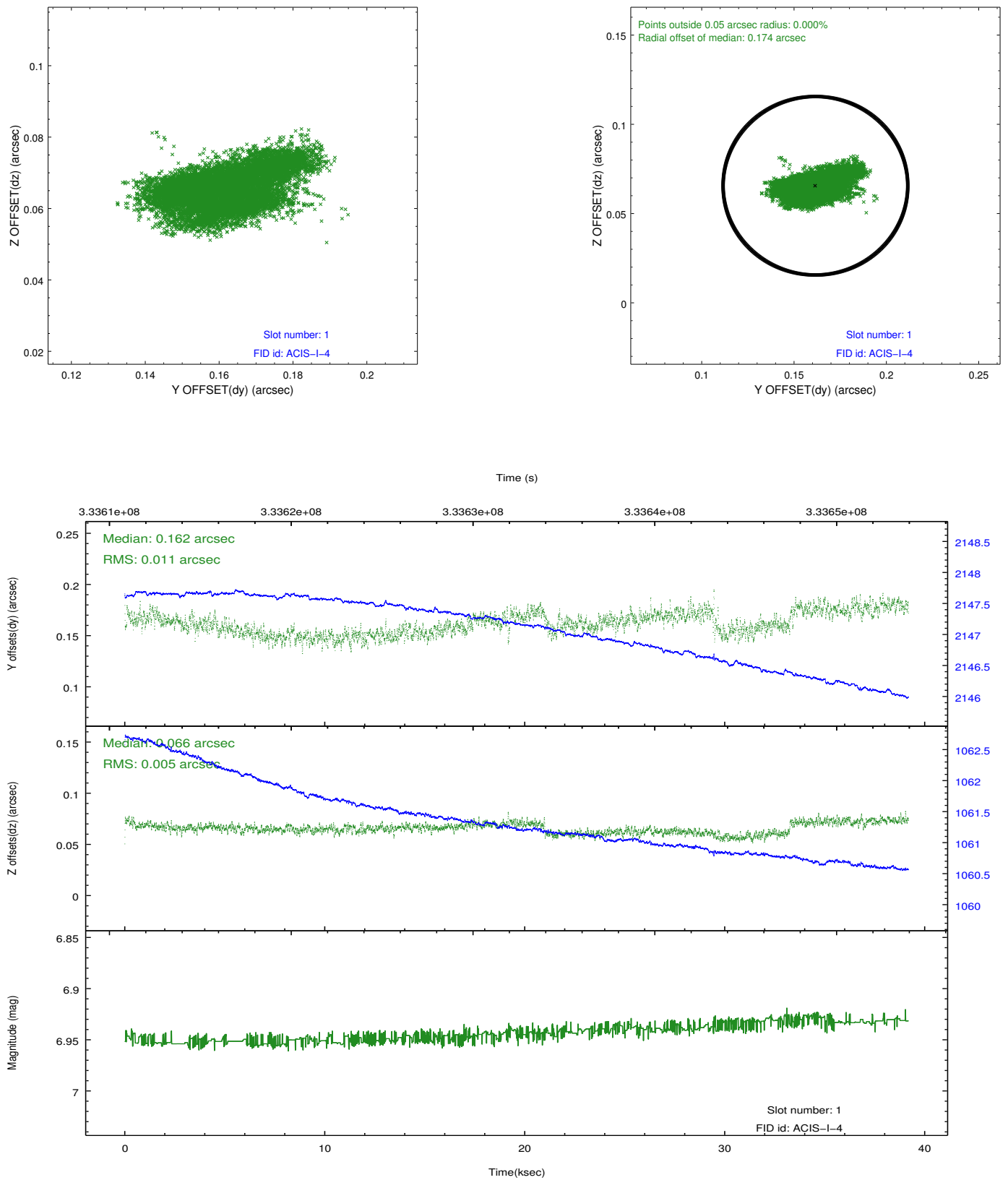


## 2.5 FID Slots

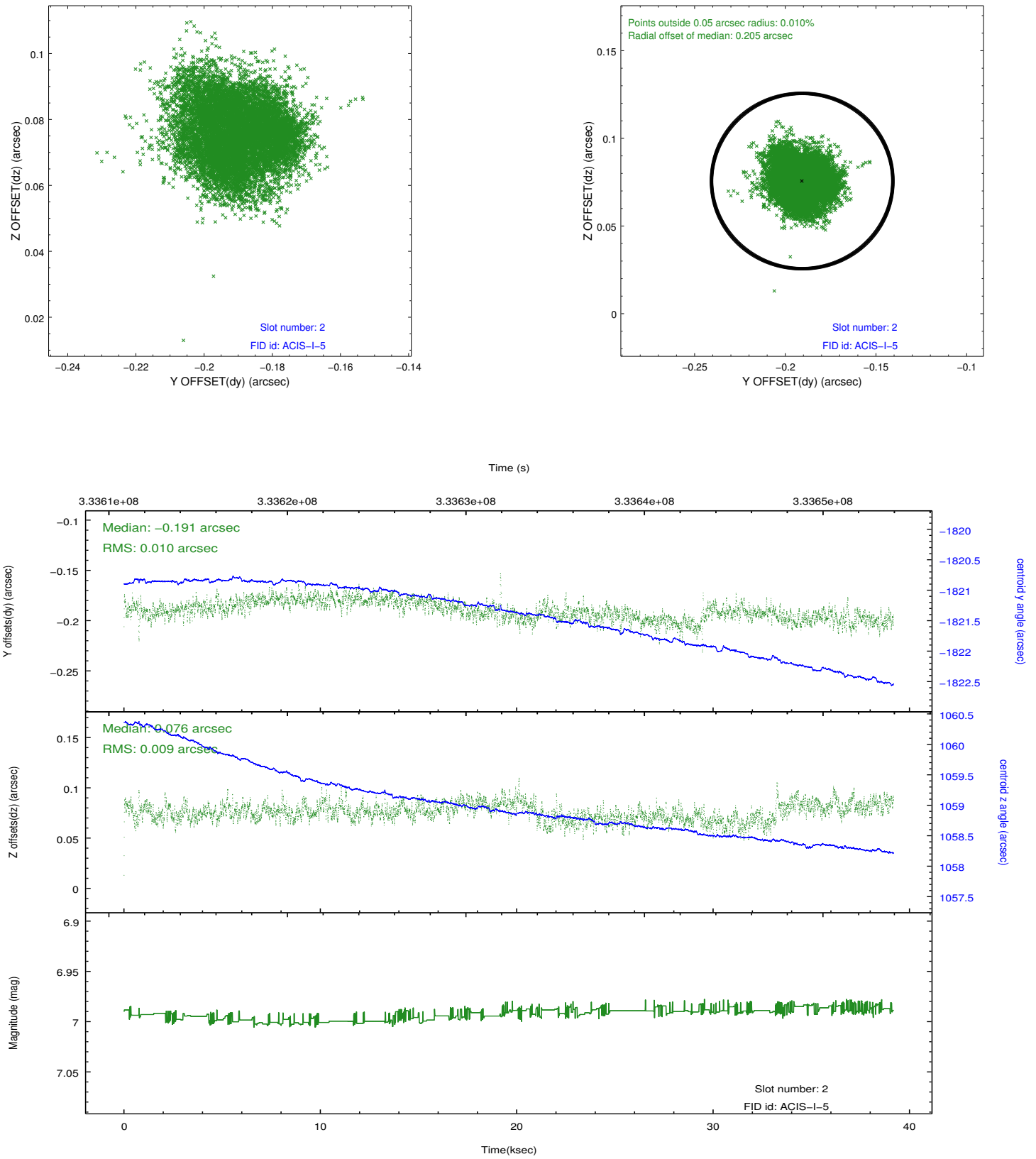
### 2.5.1 Slot 0



## 2.5.2 Slot 1



### 2.5.3 Slot 2



# A Summary

## A.1 Status

V&V Scientist	Beth Sundheim
V&V Date (YYYY-MM-DD)	2012.05.25
V&V Edition	1
V&V Disposition and Status	OK
V&V Charge Time	39.1711178

## A.2 Comments