

# V&V Reference Report

## L2 ASCDS Version : 8.4.4

Observation 9527 - L2 Version 2  
Chandra X-Ray Center

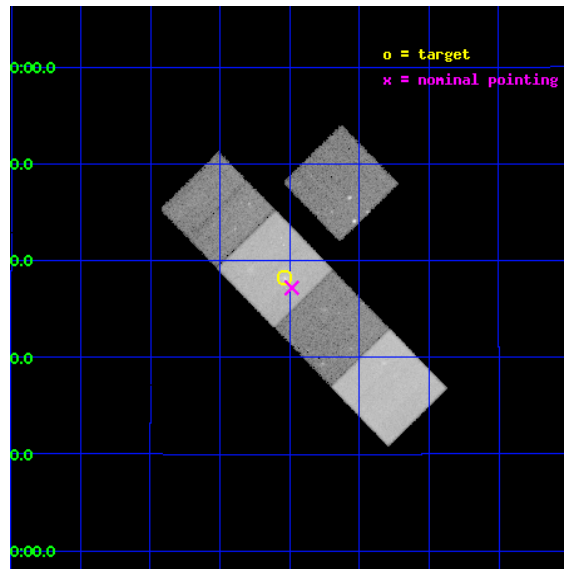
L2 Processing Date : May 13 2012

## Contents

<b>1</b>	<b>Front</b>	<b>2</b>
<b>2</b>	<b>OBI</b>	<b>3</b>
2.1	OBI . . . . .	3
2.1.1	Images . . . . .	3
2.1.2	Bias . . . . .	3
2.1.3	Parameters . . . . .	4
2.1.4	Events . . . . .	4
2.2	Compared Parameters . . . . .	5
2.3	Aspect . . . . .	6
2.4	Star Slots . . . . .	9
2.4.1	Slot 3 . . . . .	9
2.4.2	Slot 4 . . . . .	10
2.4.3	Slot 5 . . . . .	11
2.4.4	Slot 6 . . . . .	12
2.4.5	Slot 7 . . . . .	13
2.5	FID Slots . . . . .	14
2.5.1	Slot 0 . . . . .	14
2.5.2	Slot 1 . . . . .	15
2.5.3	Slot 2 . . . . .	16
<b>A</b>	<b>Summary</b>	<b>17</b>
A.1	Status . . . . .	17
A.2	Comments . . . . .	17

# 1 Front

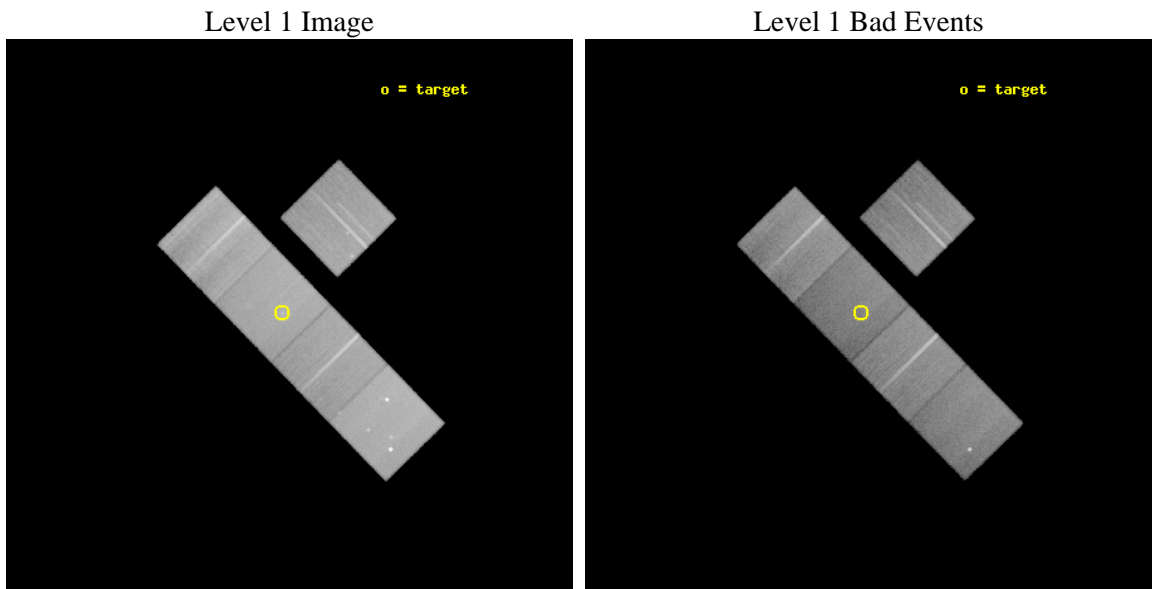
seq_num	600668	Sequence number
obs_id	9527	Observation id
title	Are the X-Ray Binaries in S0 Galaxies Different From Those in Ellipticals?	Proposal title
observer	Dr. CRAIG SARAZIN	Principal investigator
object	NGC4477	Source name
dtycycle	0	&#160
cycle	P	events from which exps? Prim/Second/Both
ra_targ	187.509167	Observer's specified target RA [deg]
dec_targ	13.636444	Observer's specified target Dec [deg]
ra_nom	187.49605664497	Nominal RA [deg]
dec_nom	13.619814760124	Nominal Dec [deg]
roll_nom	225.68496174208	Nominal Roll [deg]
revision	2	Processing version of data
ontime	38179.600293636	Sum of GTIs [s]
livetime	37680.755708387	Livetime [s]
ontime3	38176.45930326	Sum of GTIs [s]
ontime5	38179.600293636	Sum of GTIs [s]
ontime6	38176.45930326	Sum of GTIs [s]
ontime7	38179.600293636	Sum of GTIs [s]
ontime8	38170.177302718	Sum of GTIs [s]
l2events	466228	Number of level 2 events



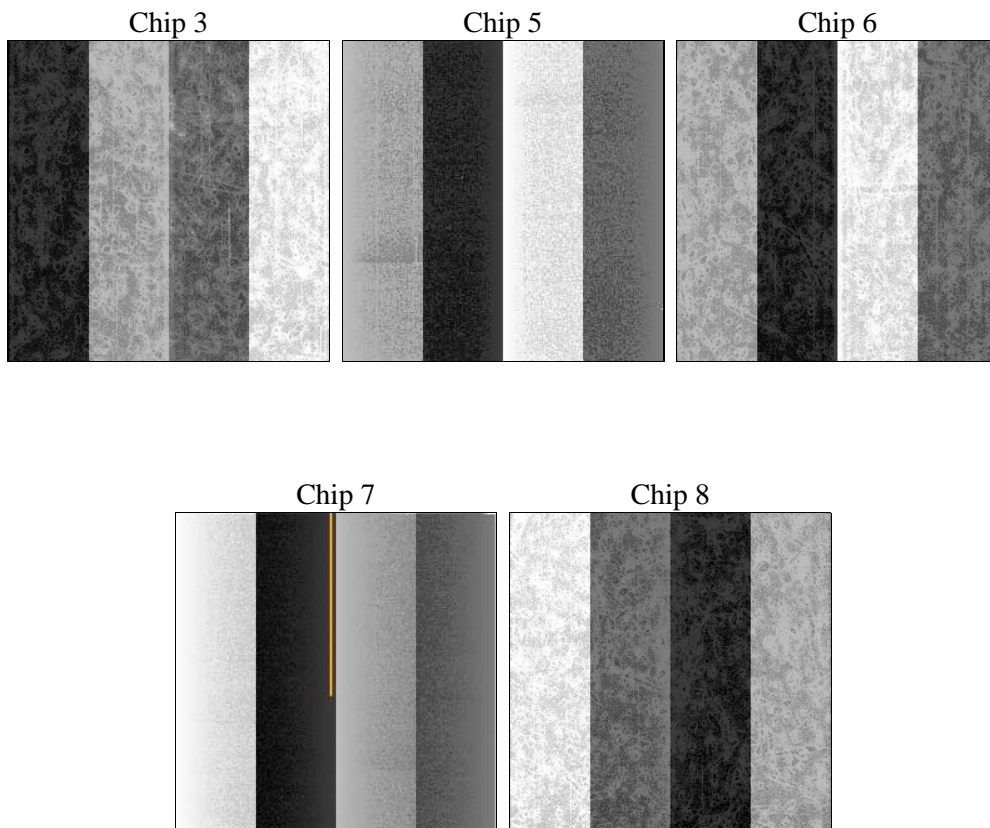
## 2 OBI

### 2.1 OBI

#### 2.1.1 Images



#### 2.1.2 Bias



### 2.1.3 Parameters

obi_num	0	Obi number	sched_exp_time	38000.000000	[s] Scheduled observation exposure time
ascdsver	8.4.4	Processing system revision	ontime	38179.600293636	Sum of GTIs [s]
caldsver	4.4.9	&#160	ontime3	38176.45930326	Sum of GTIs [s]
date	2012-05-13T14:24:08	Date and time of file creation	ontime5	38179.600293636	Sum of GTIs [s]
revision	2	Processing version of data	ontime6	38176.45930326	Sum of GTIs [s]
			ontime7	38179.600293636	Sum of GTIs [s]
			ontime8	38170.177302718	Sum of GTIs [s]
			l1events	1823154	Number of level 1 events

### 2.1.4 Events

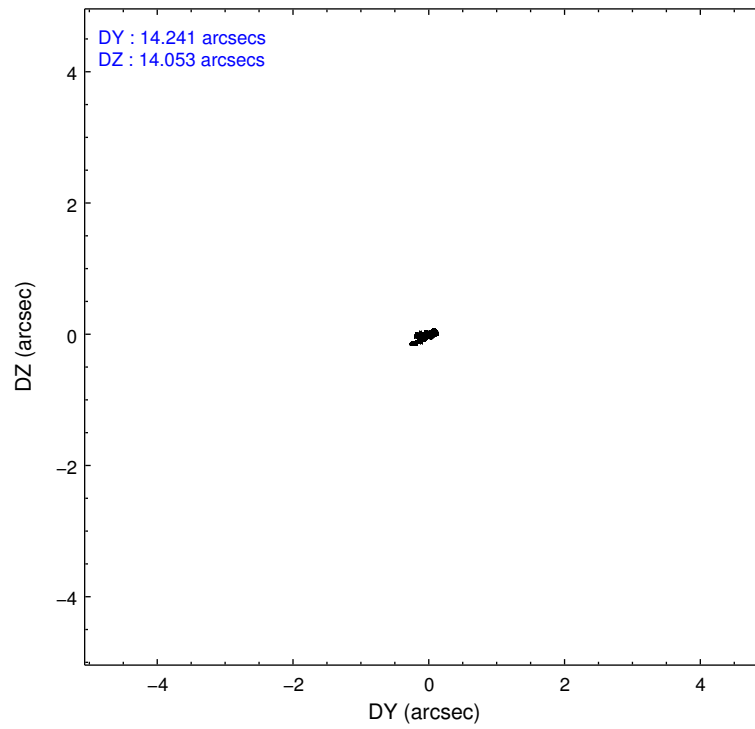
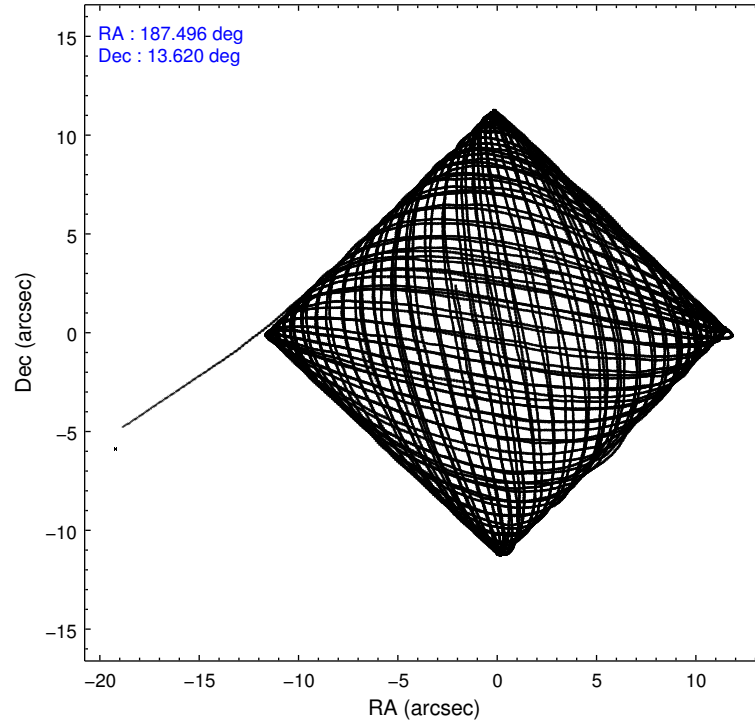
	ccd 3	ccd 5	ccd 6	ccd 7	ccd 8
level 1 events	301433	449281	314214	362267	395959
rejected events	267756	224599	277311	193937	299072
rejected %	88%	49%	88%	53%	75%

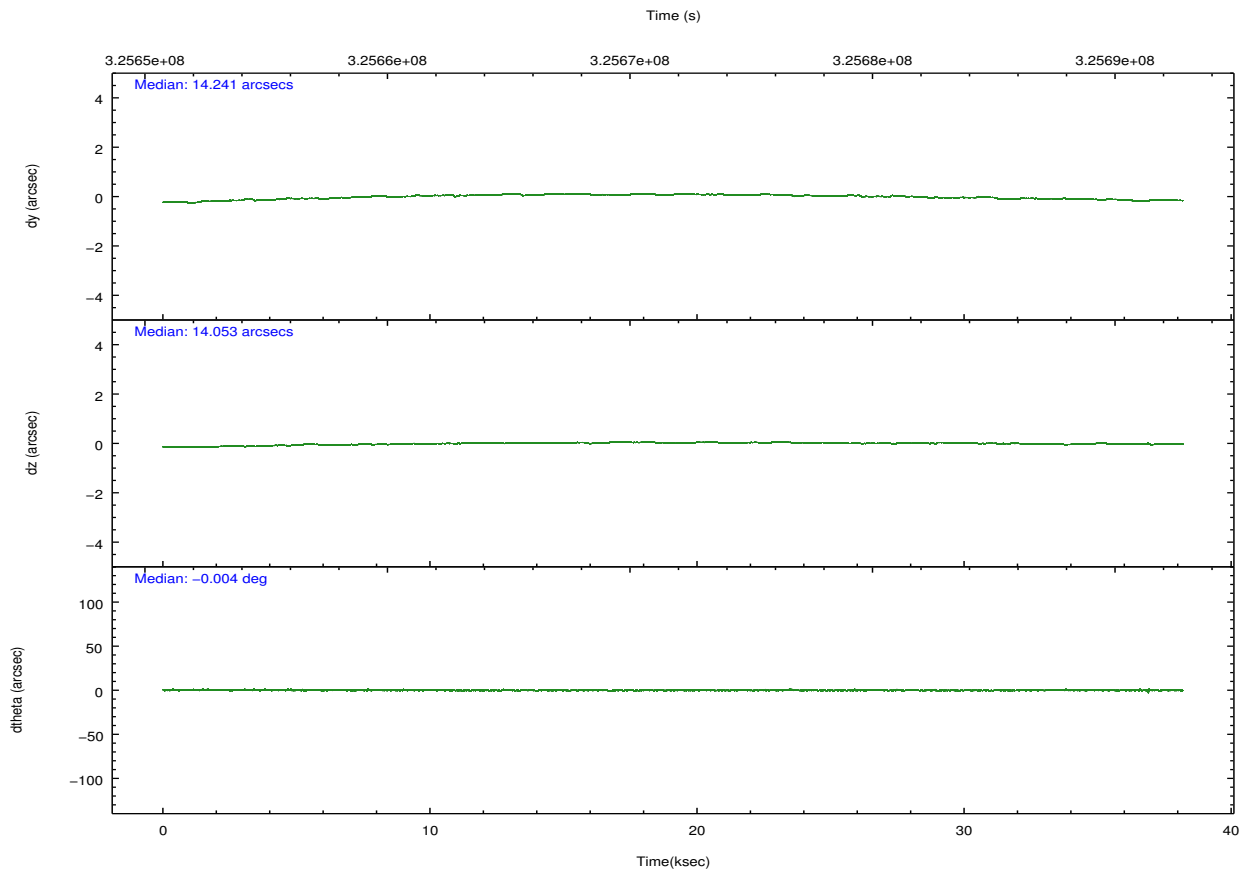
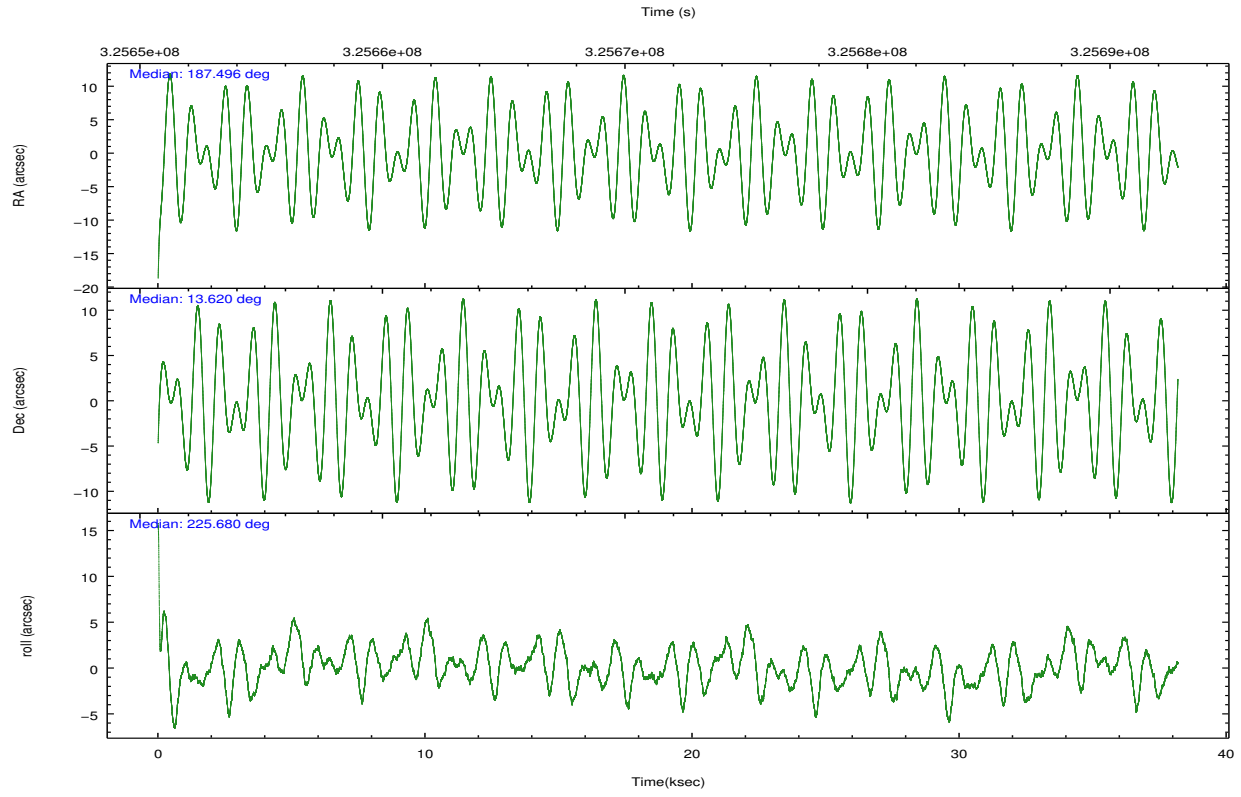
	ccd 3	ccd 5	ccd 6	ccd 7	ccd 8
grade 0 events	14596	27895	15706	18985	31618
	4%	6%	4%	5%	7%
grade 1 events	171	771	182	464	322
	0%	0%	0%	0%	0%
grade 2 events	6748	68410	7731	35269	21888
	2%	15%	2%	9%	5%
grade 3 events	3447	9581	3525	15833	10558
	1%	2%	1%	4%	2%
grade 4 events	3365	9319	3526	15482	9657
	1%	2%	1%	4%	2%
grade 5 events	12380	34266	12705	37092	17933
	4%	7%	4%	10%	4%
grade 6 events	6001	113001	6997	85284	24747
	1%	25%	2%	23%	6%
grade 7 events	254725	186038	263842	153858	279236
	84%	41%	83%	42%	70%

## 2.2 Compared Parameters

Parameter	Planned	Actual	Parameter	Planned	Actual
Instrument	ACIS	ACIS	Obspar format version number	7	7
Detector	ACIS-35678	ACIS-35678	Obspar file type	PREDICTED	ACTUAL
Grating	NONE	NONE	Obspar update status	NONE	UPDATED
Data mode	VFAINT	VFAINT	CCD I0 on	N	N
Observation mode	POINTING	POINTING	CCD I1 on	N	N
[deg] Pointing RA	187.502646	187.4960566449682	CCD I2 on	N	N
[deg] Pointing Dec	13.646407	13.61981476012404	CCD I3 on	O1	Y
[deg] Pointing Roll	225.526781	225.6849617420785	CCD S0 on	N	N
[mm] SIM focus pos	-0.684267	-0.6828225247311905	CCD S1 on	O2	Y
[mm] SIM defocus	0	0.001444936568705701	CCD S2 on	O3	Y
[mm] SIM translation stage pos	-190.132523	-190.1425803651734	CCD S3 on	Y	Y
[mm] SIM translation stage offset	0	0.01005778216563158	CCD S4 on	O4	Y
[s] Observation start time (MET)	325652868.184000	325651579.59443	CCD S5 on	N	N
Observation start date	2008-04-27T03:06:43	2008-04-27T02:46:19	Number of optional ACIS chips dropped	0	0
[s] Observation end time (MET)	325690868.184000	325692279.27142	On-chip summing requested	N	N
Observation end date	2008-04-27T13:40:03	2008-04-27T14:04:39	Subarray requested	NONE	NONE
Read mode	TIMED	TIMED	Alternating exposures requested	N	N
			[s] Primary exposure time	0.000000	3.1

## 2.3 Aspect



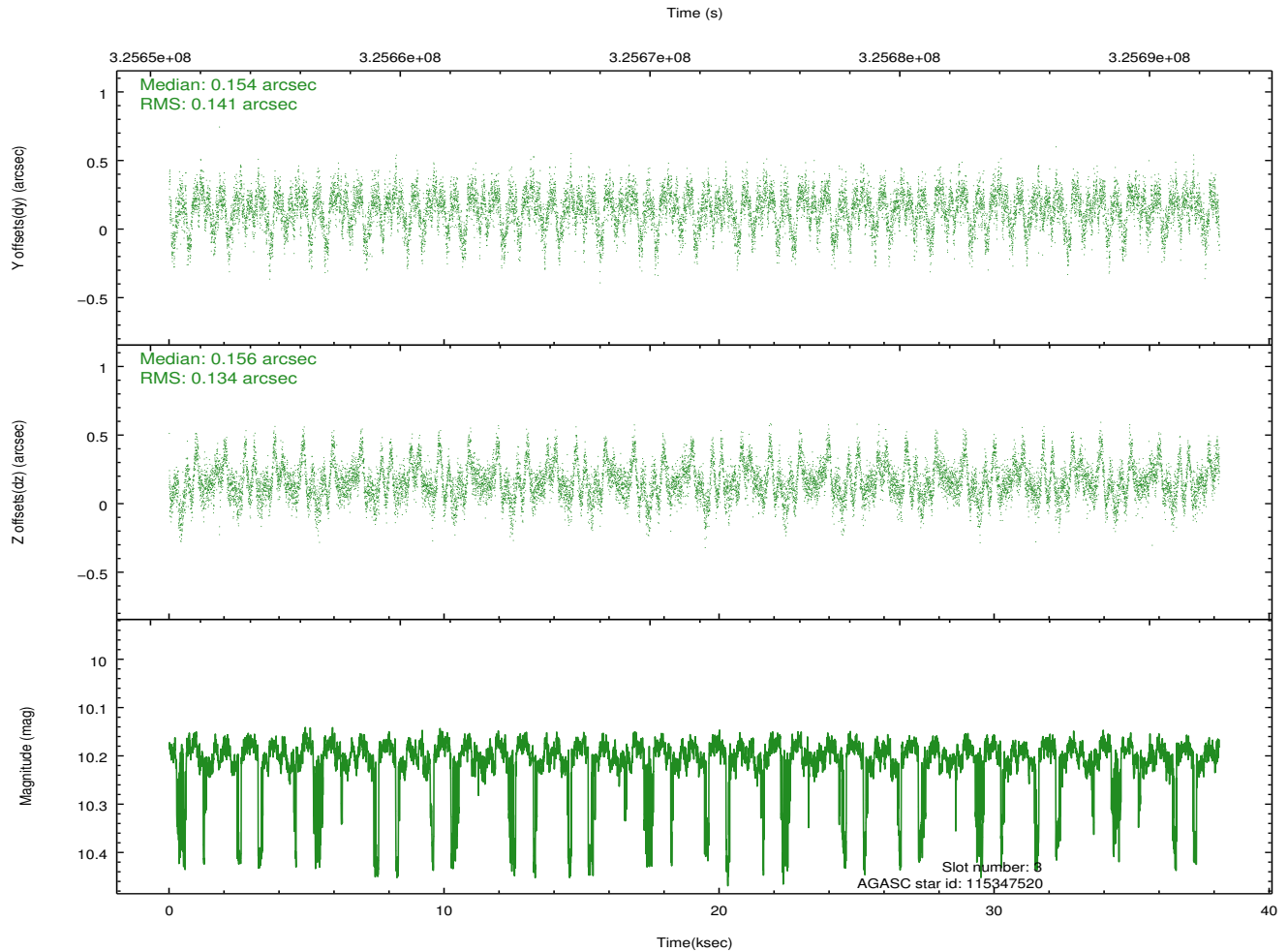
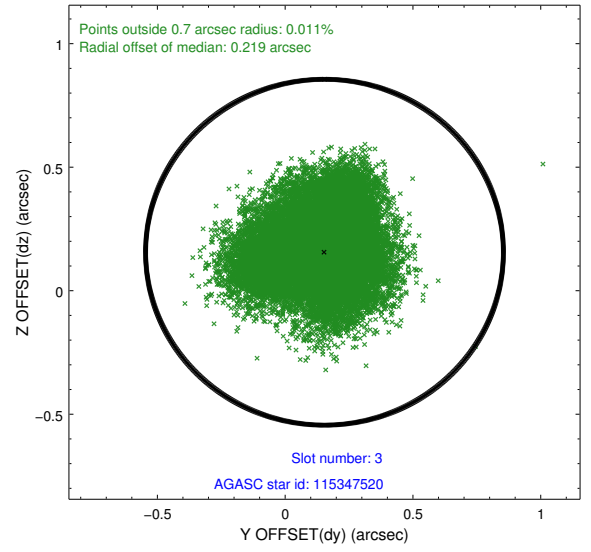
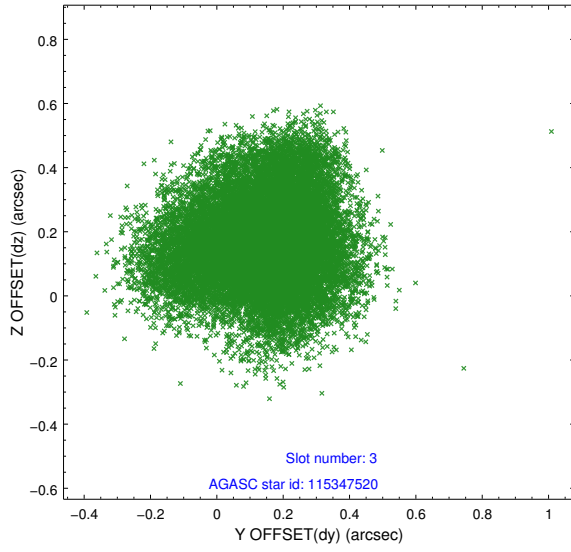


### Slot Statistics

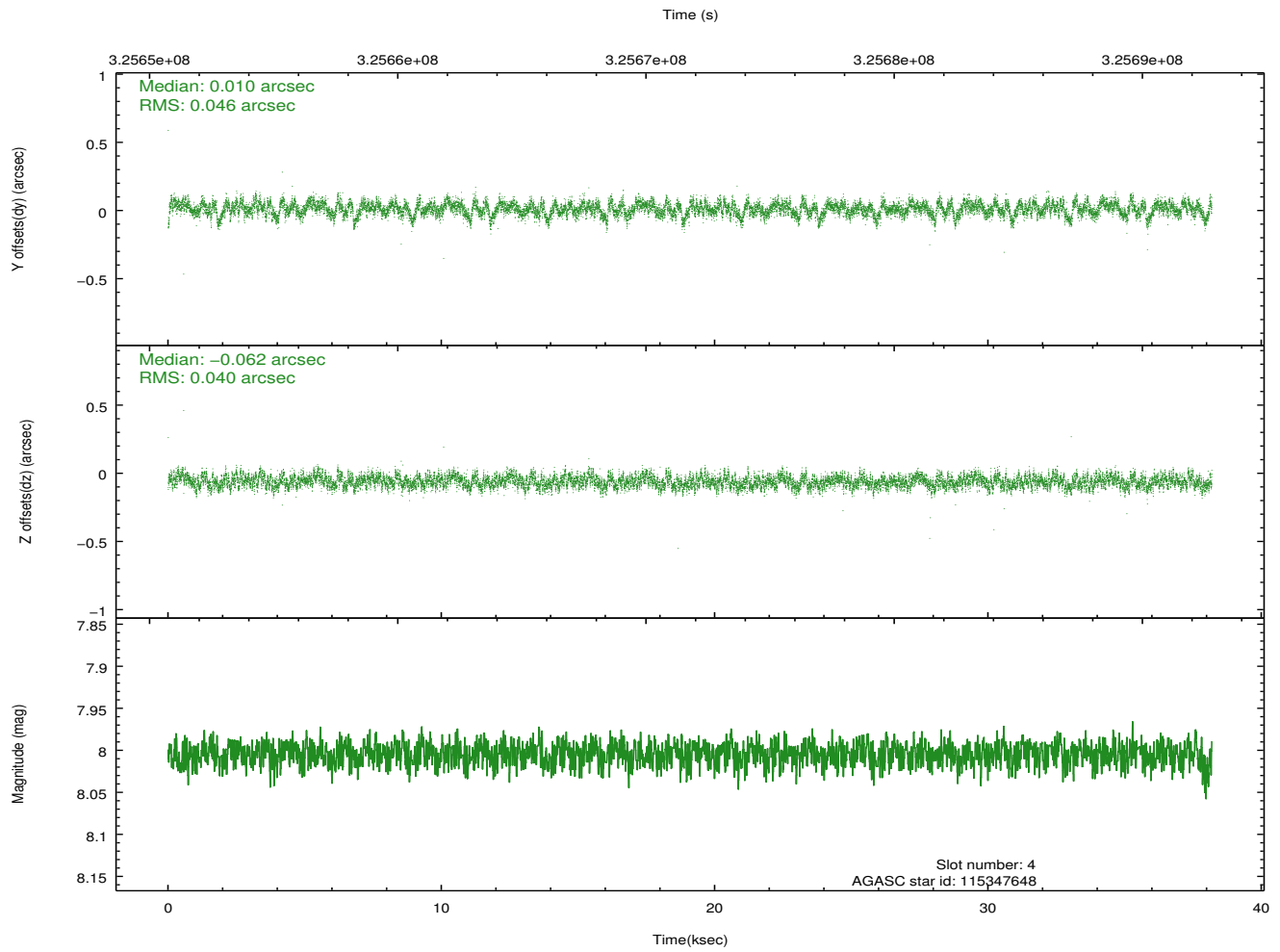
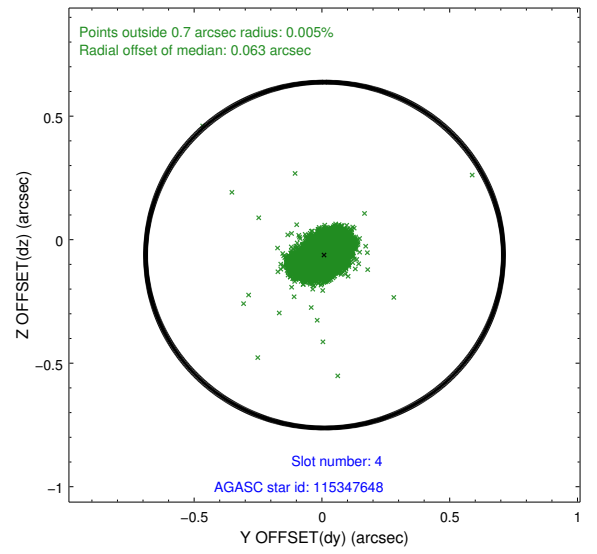
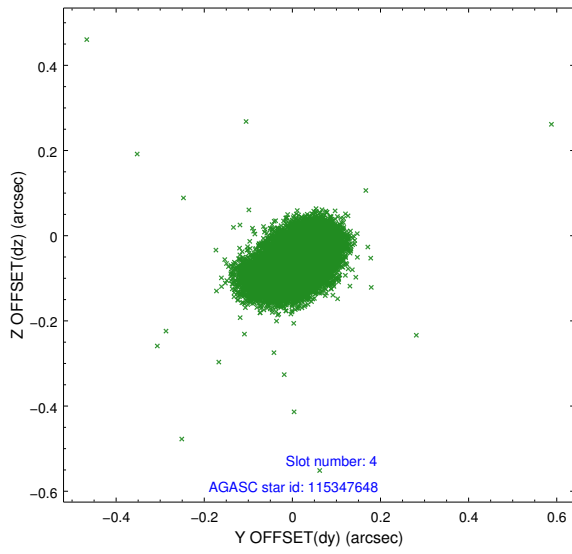
slot	status	id	mag	n_pts	med_dy	med_dz	dr1	dr2	ra	dec	mean_y	mean_z
0	FID	ACIS-S-2	6.91	9314	-0.061	-0.039	0.008	0.015	0.000000	0.000000	-767.23	-1735.38
1	FID	ACIS-S-4	6.99	9313	0.176	0.040	0.008	0.017	0.000000	0.000000	2146.27	173.16
2	FID	ACIS-S-5	7.01	9313	-0.146	0.008	0.006	0.011	0.000000	0.000000	-1820.13	166.82
3	GUIDE	115347520	10.20	18526	0.154	0.156	0.210	0.333	187.517505	12.810279	2111.52	2146.67
4	GUIDE	115347648	8.00	18622	0.010	-0.062	0.064	0.106	187.273687	13.950334	-220.07	-1337.45
5	GUIDE	115348424	9.50	18607	-0.023	-0.062	0.146	0.240	187.199498	13.087929	2179.21	649.98
6	GUIDE	115349560	9.87	18600	-0.081	0.018	0.104	0.172	188.086555	13.583828	-1270.68	1612.70
7	GUIDE	115350296	9.09	18616	-0.033	-0.049	0.090	0.142	187.140806	13.950701	103.64	-1669.99

## 2.4 Star Slots

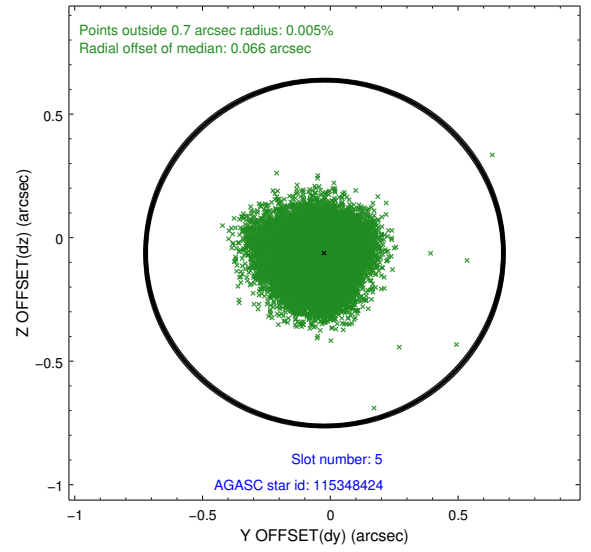
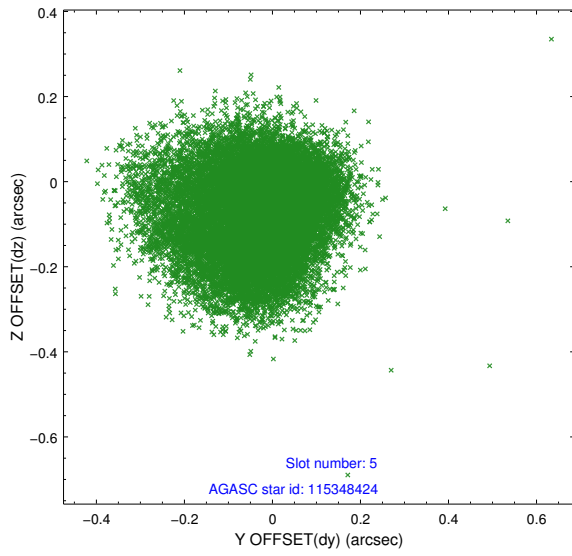
### 2.4.1 Slot 3



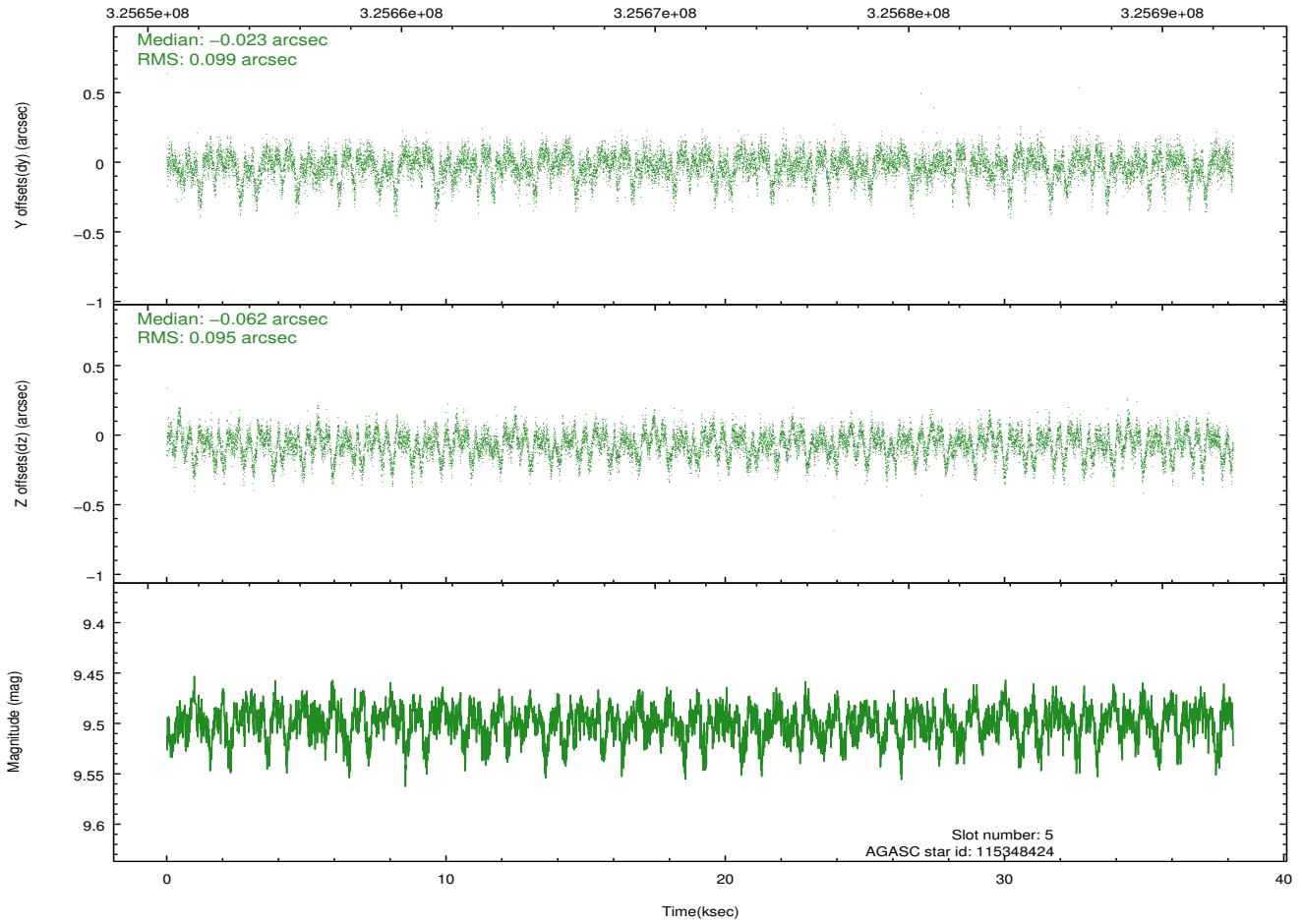
## 2.4.2 Slot 4



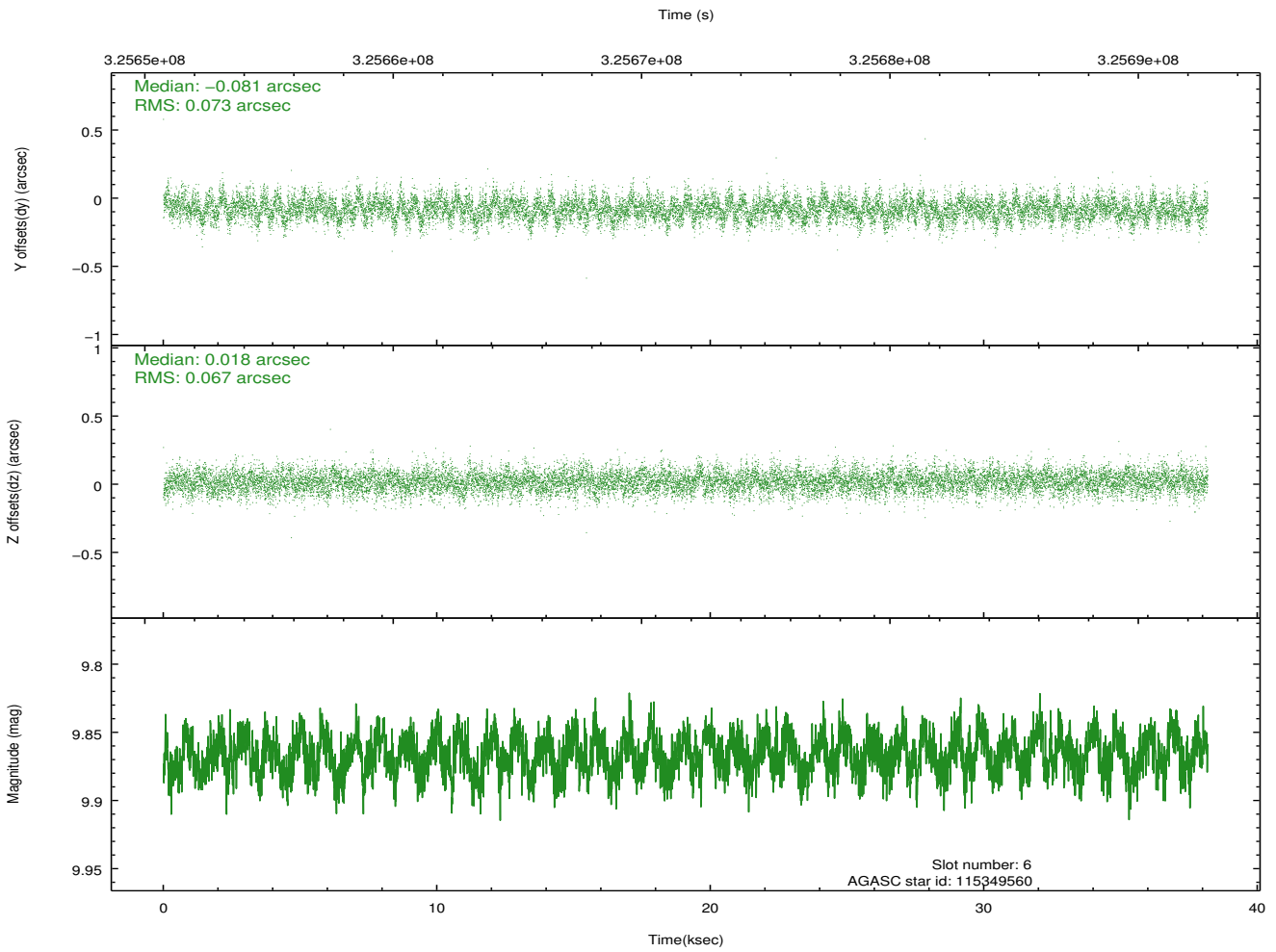
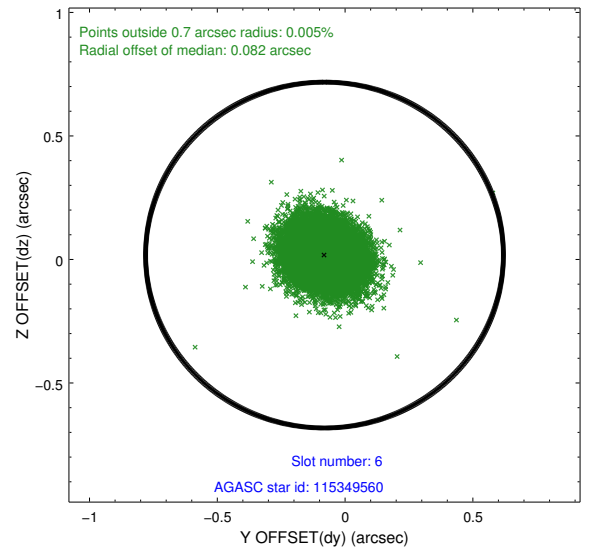
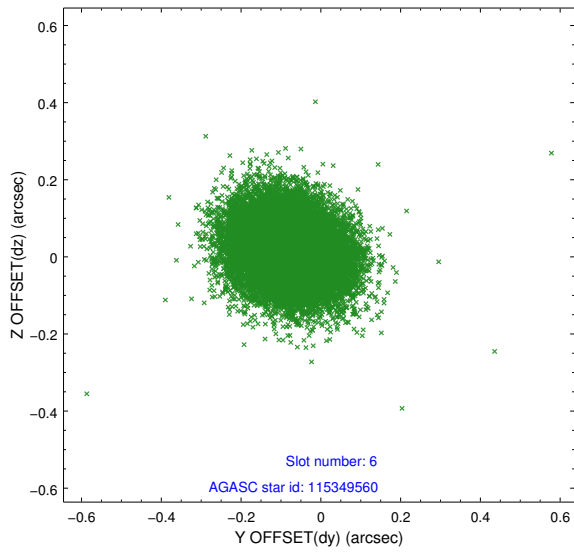
### 2.4.3 Slot 5



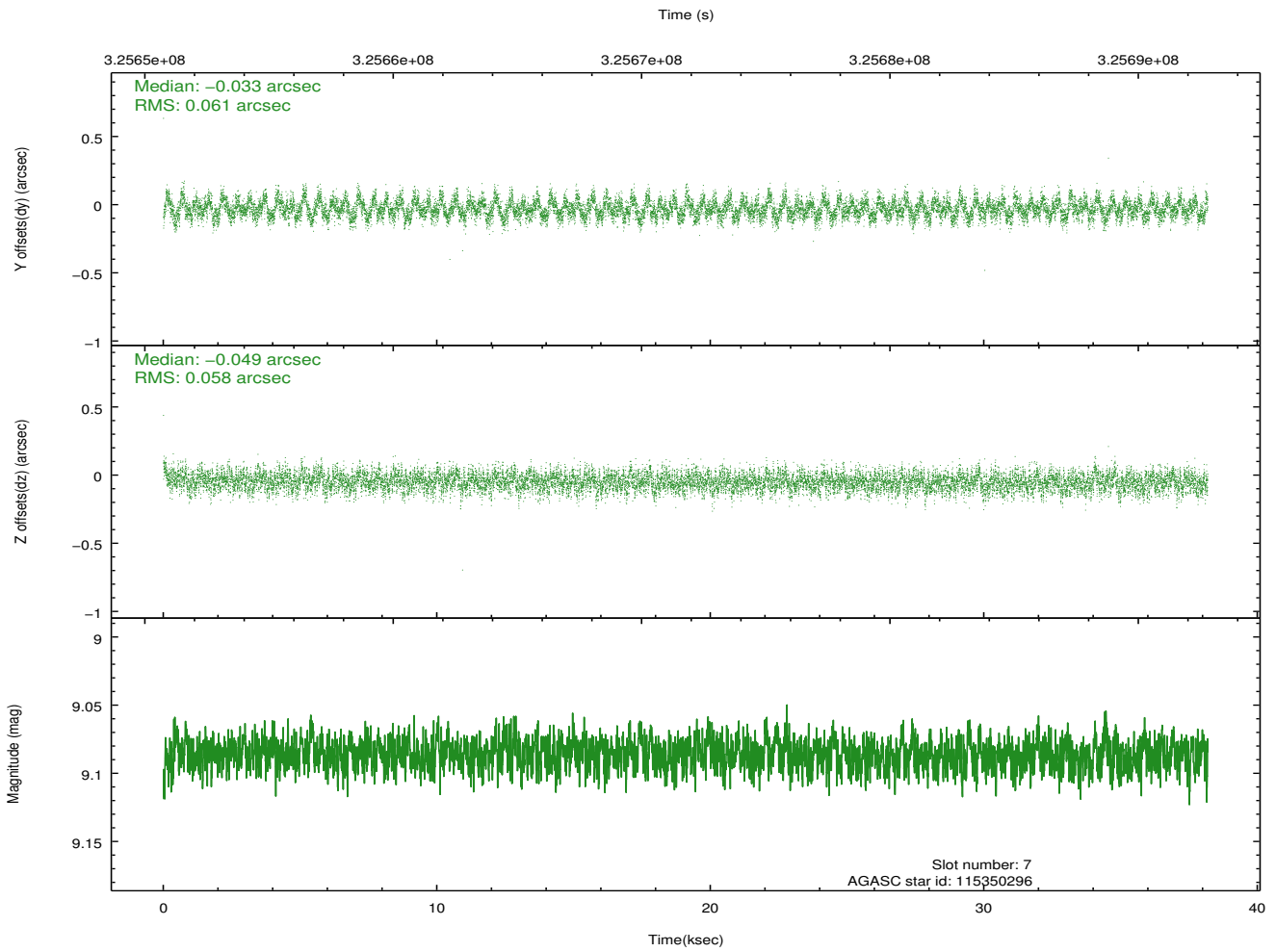
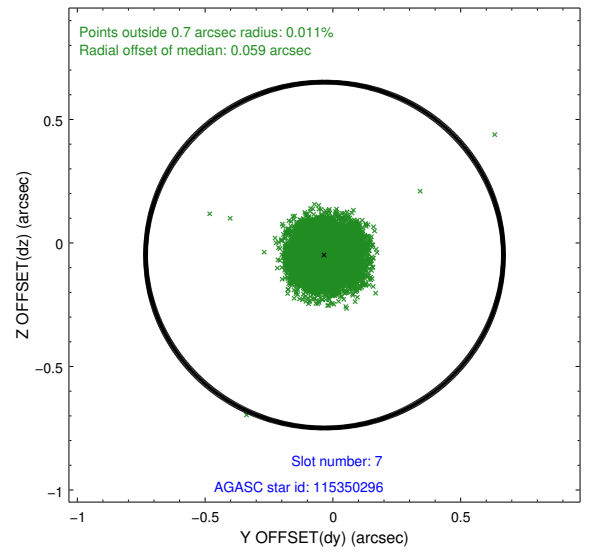
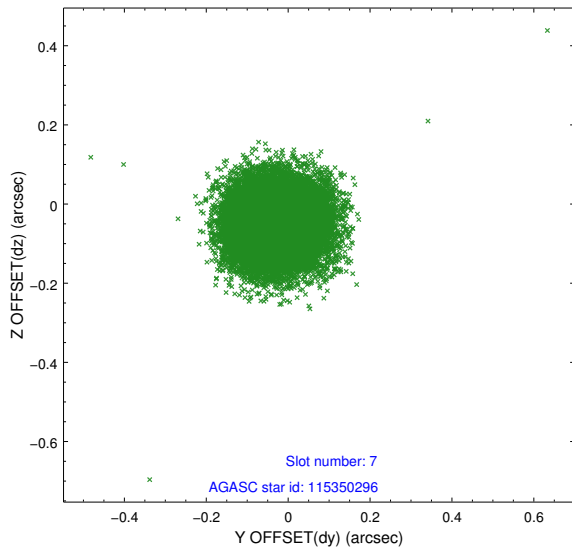
Time (s)



### 2.4.4 Slot 6

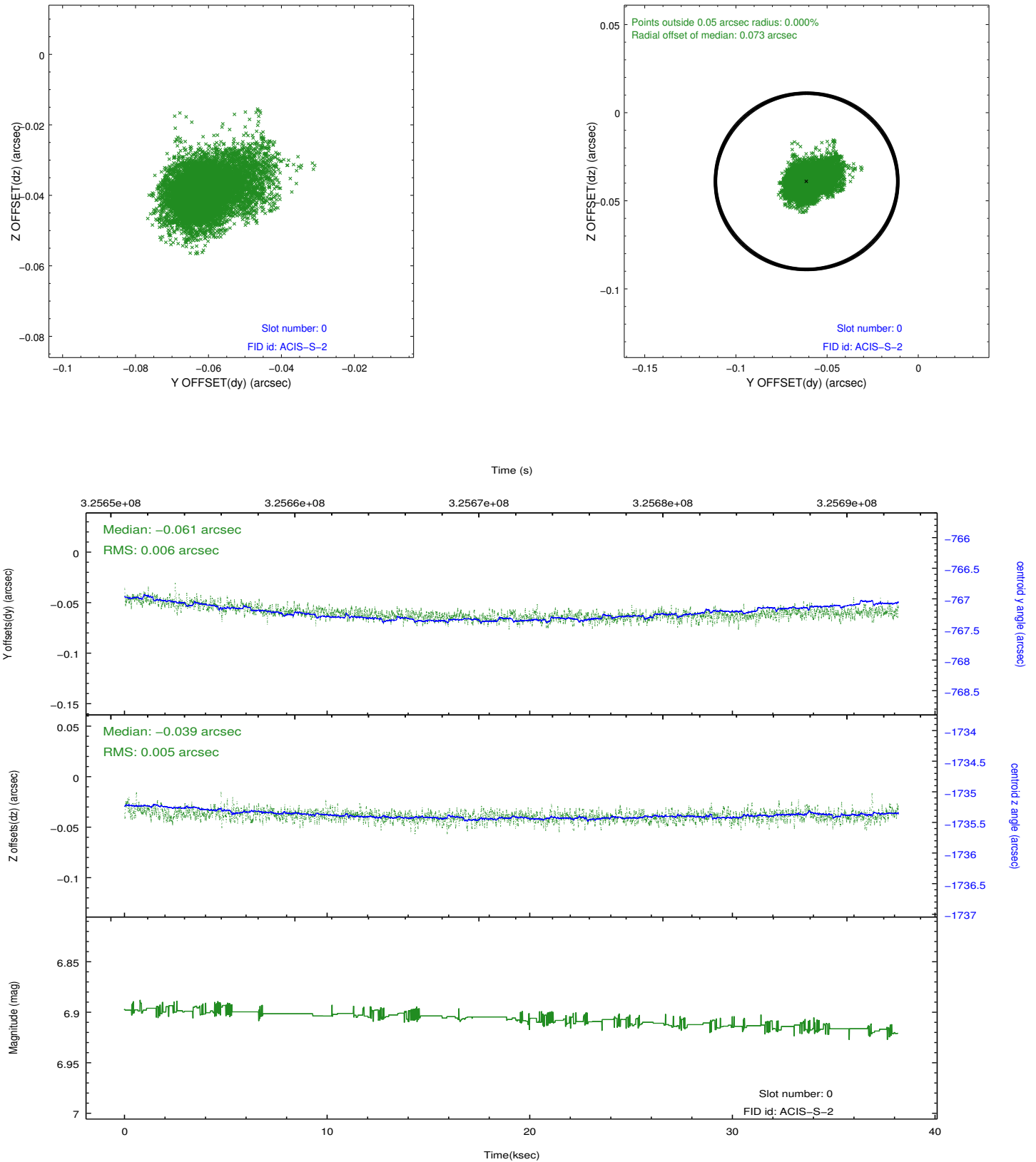


## 2.4.5 Slot 7

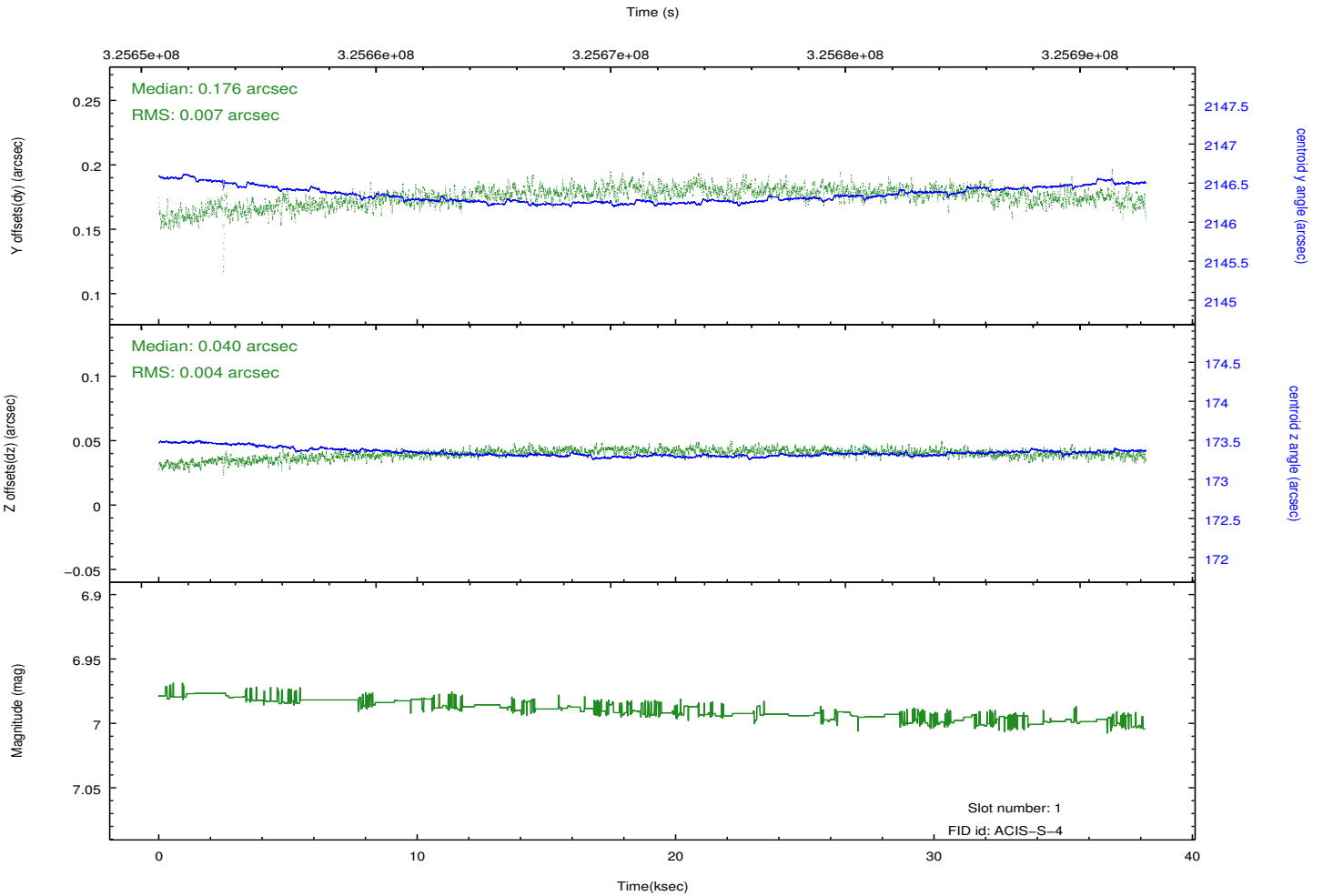
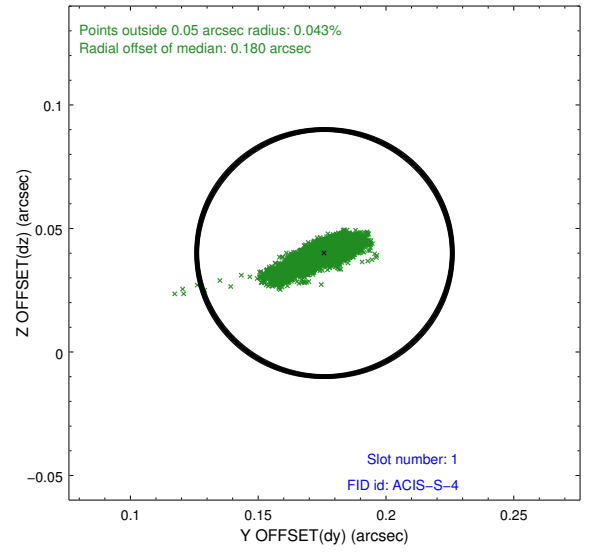
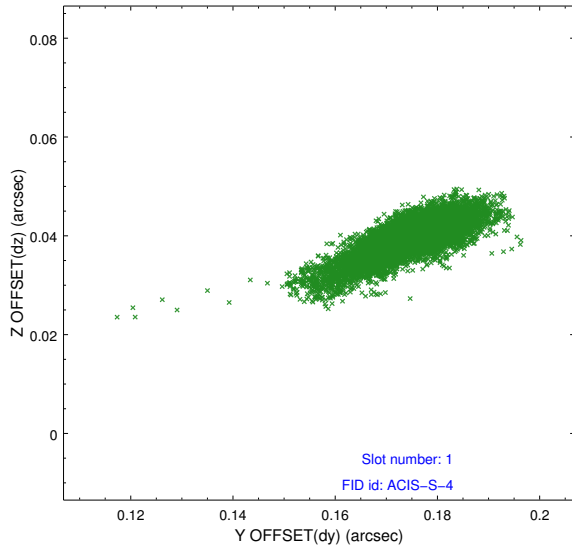


## 2.5 FID Slots

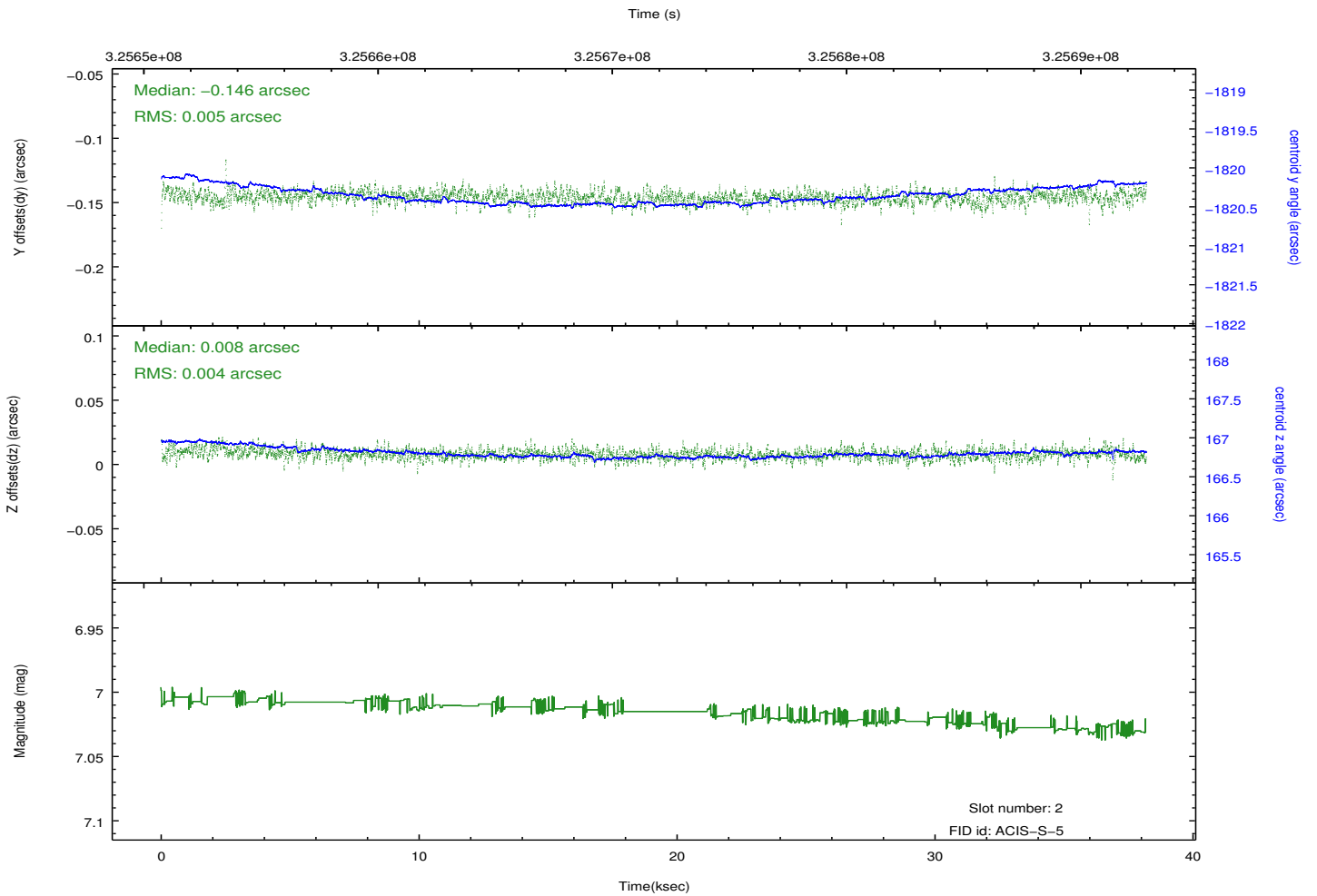
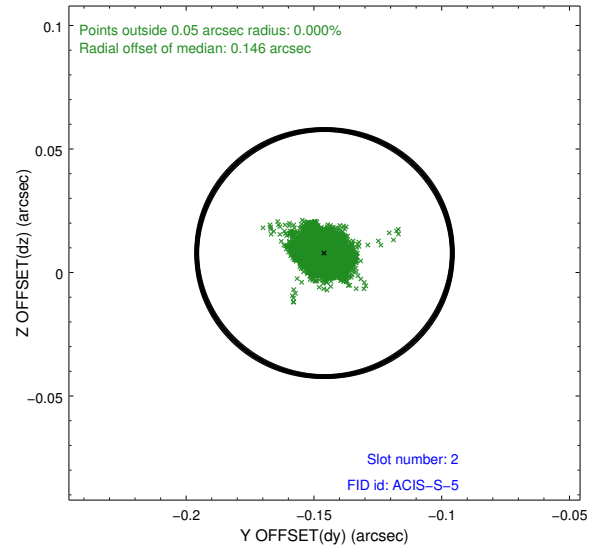
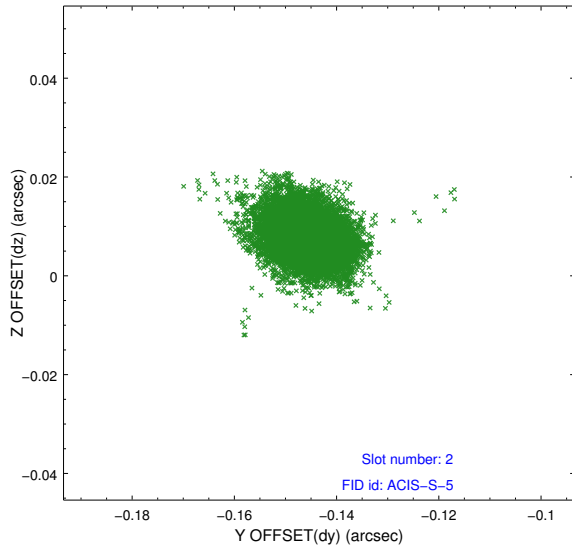
### 2.5.1 Slot 0



## 2.5.2 Slot 1



### 2.5.3 Slot 2



# A Summary

## A.1 Status

V&V Scientist	Jen Lauer
V&V Date (YYYY-MM-DD)	2012.05.15
V&V Edition	1
V&V Disposition and Status	OK
V&V Charge Time	38.1796002

## A.2 Comments