

V&V Reference Report

L2 ASCDS Version : 8.4.4

Observation 9537 - L2 Version 2
Chandra X-Ray Center

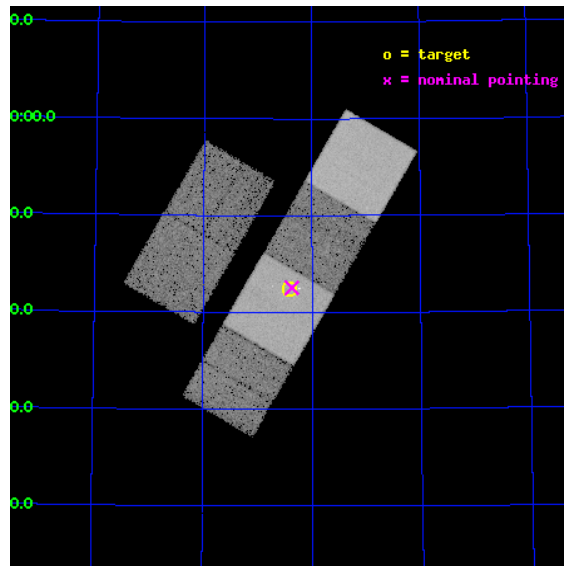
L2 Processing Date : Jun 1 2012

Contents

1	Front	2
2	OBI	3
2.1	OBI	3
2.1.1	Images	3
2.1.2	Bias	3
2.1.3	Parameters	4
2.1.4	Events	4
2.2	Compared Parameters	5
2.3	Aspect	6
2.4	Star Slots	9
2.4.1	Slot 3	9
2.4.2	Slot 4	10
2.4.3	Slot 5	11
2.4.4	Slot 6	12
2.4.5	Slot 7	13
2.5	FID Slots	14
2.5.1	Slot 0	14
2.5.2	Slot 1	15
2.5.3	Slot 2	16
A	Summary	17
A.1	Status	17
A.2	Comments	17

1 Front

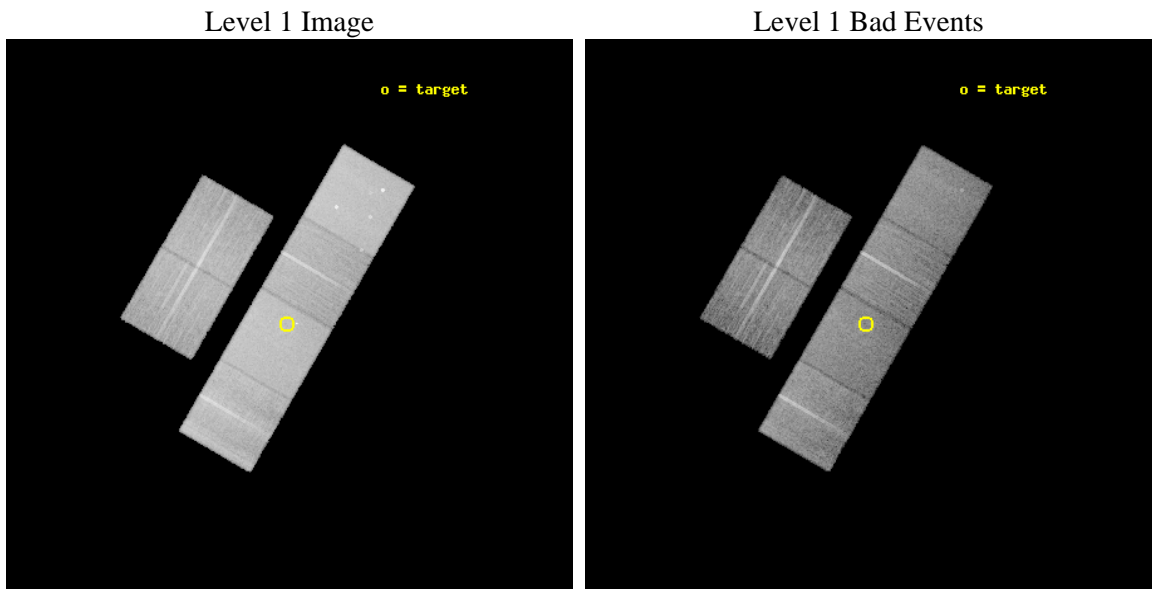
seq_num	600678	Sequence number
obs_id	9537	Observation id
title	Galaxies across the Octaves: A Chandra Legacy Survey of SINGS Galaxies	Proposal title
observer	Dr Leigh Jenkins	Principal investigator
object	DDO 165	Source name
dtcycle	0	
cycle	P	events from which exps? Prim/Second/Both
ra_targ	196.60375	Observer's specified target RA [deg]
dec_targ	67.706944	Observer's specified target Dec [deg]
ra_nom	196.59249290796	Nominal RA [deg]
dec_nom	67.709241112206	Nominal Dec [deg]
roll_nom	120.16707171937	Nominal Roll [deg]
revision	2	Processing version of data
ontime	13715.131955802	Sum of GTIs [s]
livetime	13541.462696717	Livetime [s]
ontime2	13715.172995806	Sum of GTIs [s]
ontime3	13711.767835498	Sum of GTIs [s]
ontime5	13715.090915799	Sum of GTIs [s]
ontime6	13715.049875796	Sum of GTIs [s]
ontime7	13715.131955802	Sum of GTIs [s]
ontime8	13714.967795789	Sum of GTIs [s]
l2events	238429	Number of level 2 events



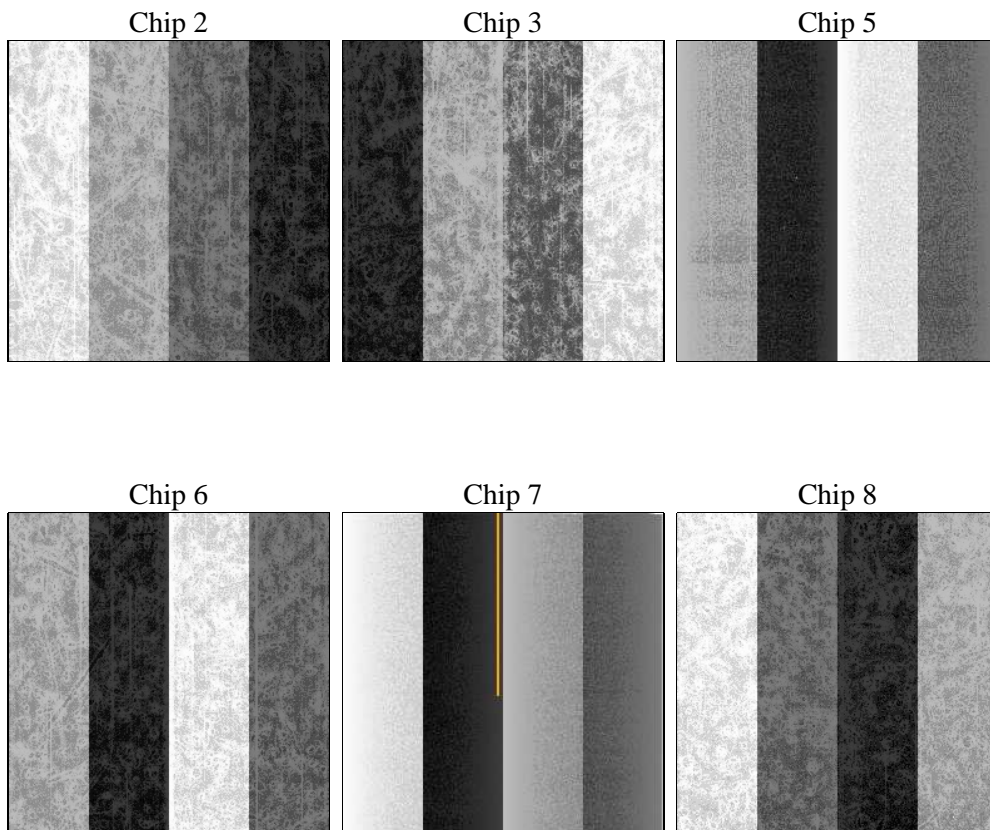
2 OBI

2.1 OBI

2.1.1 Images



2.1.2 Bias



2.1.3 Parameters

obi_num	0	Obi number	sched_exp_time	13800.000000	[s] Scheduled observation exposure time
ascdsver	8.4.4	Processing system revision	ontime	13715.131955802	Sum of GTIs [s]
caldbver	4.4.9	 	ontime2	13715.172995806	Sum of GTIs [s]
date	2012-06-01T10:15:19	Date and time of file creation	ontime3	13711.767835498	Sum of GTIs [s]
revision	2	Processing version of data	ontime5	13715.090915799	Sum of GTIs [s]
			ontime6	13715.049875796	Sum of GTIs [s]
			ontime7	13715.131955802	Sum of GTIs [s]
			ontime8	13714.967795789	Sum of GTIs [s]
			l1events	1024615	Number of level 1 events

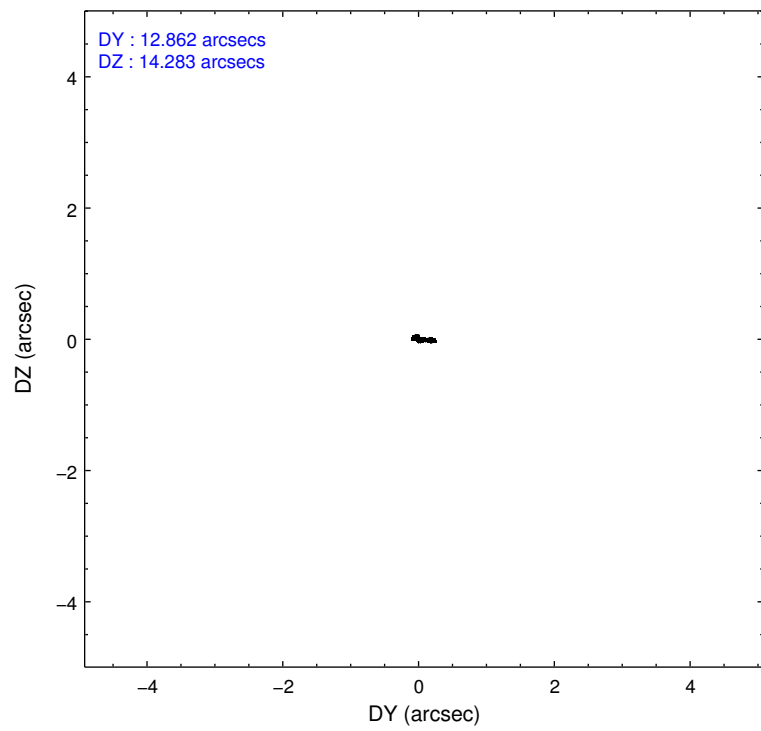
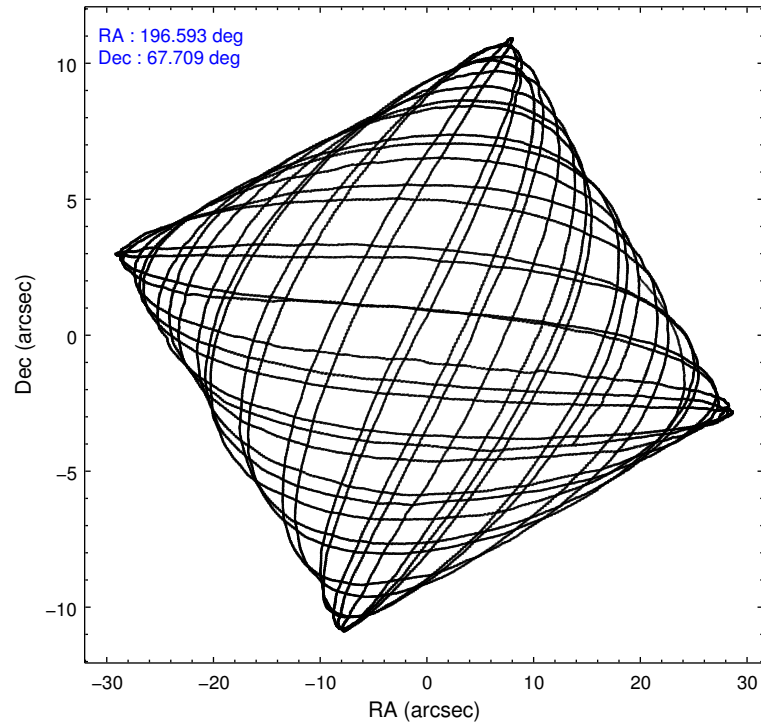
2.1.4 Events

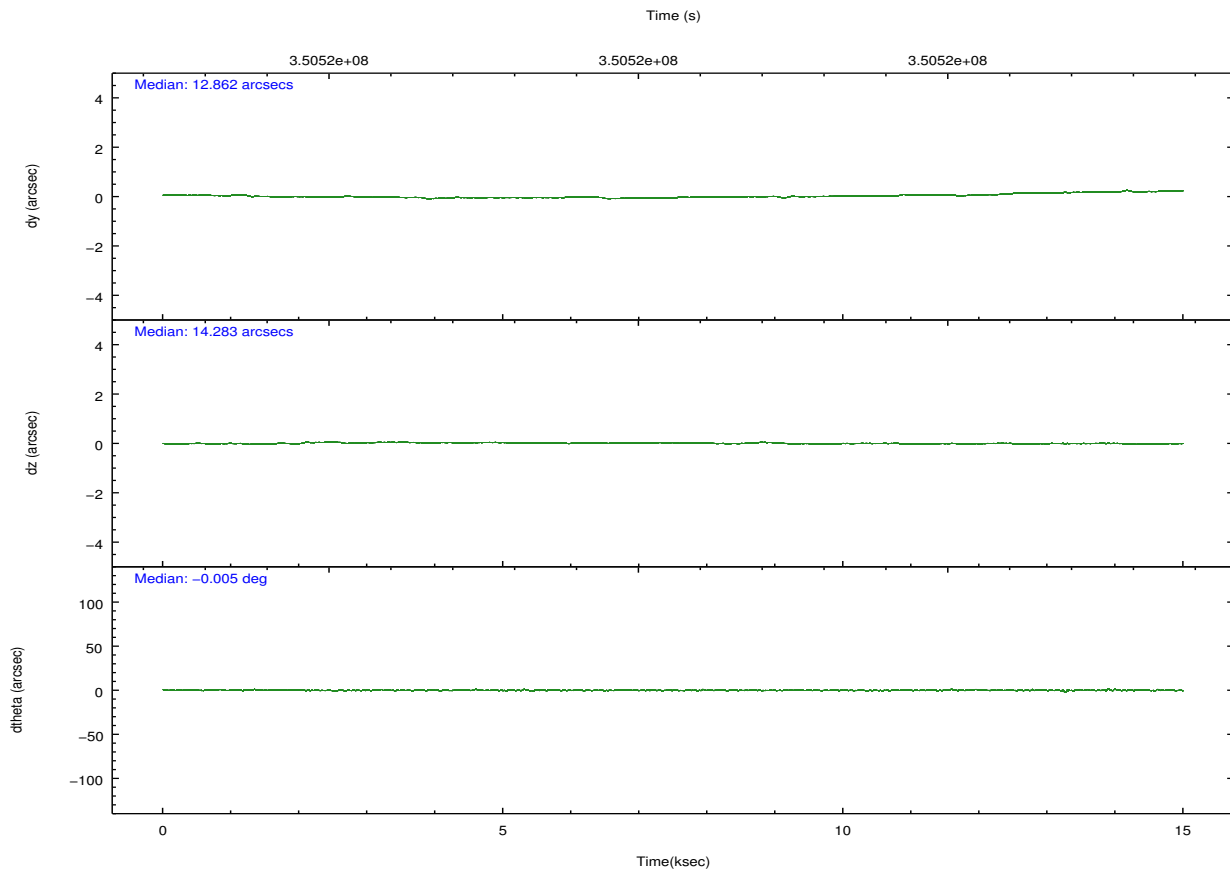
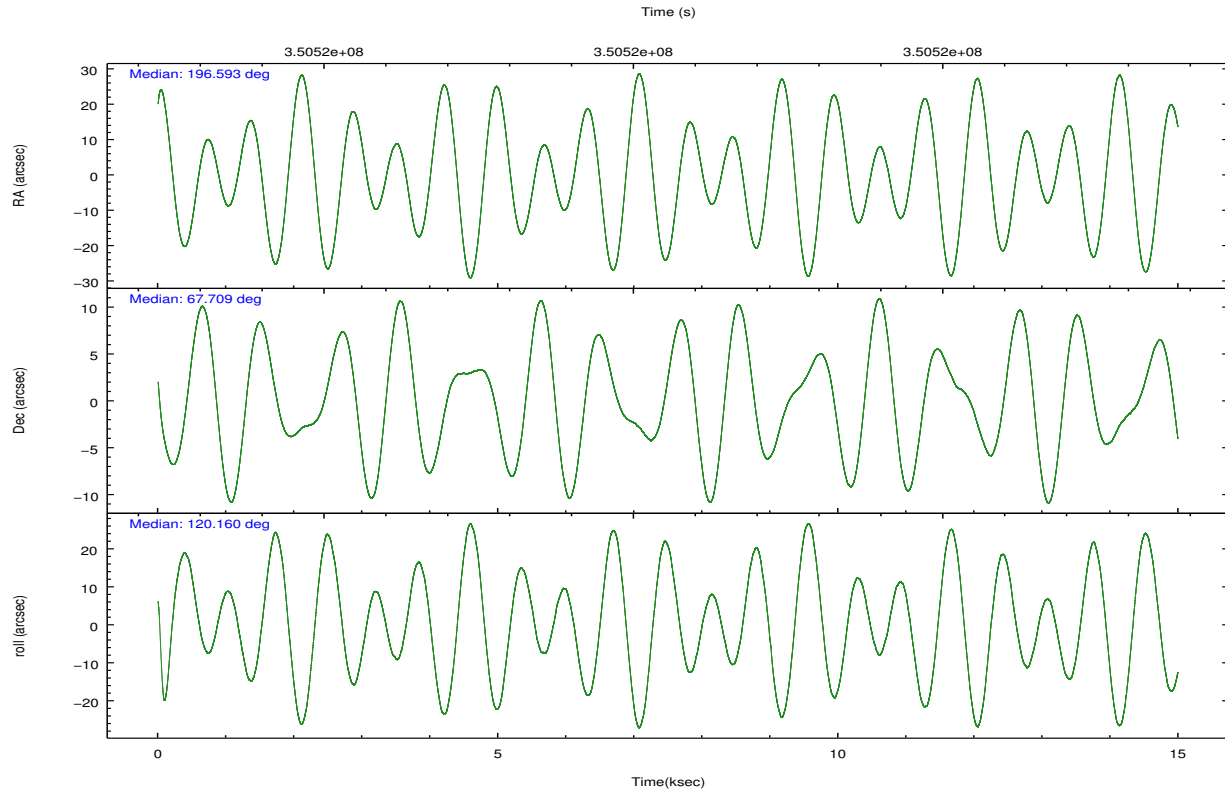
	ccd 2	ccd 3	ccd 5	ccd 6	ccd 7	ccd 8		ccd 2	ccd 3	ccd 5	ccd 6	ccd 7	ccd 8
level 1 events	140608	135890	222017	144565	198338	183197	grade 0 events	6845	7142	8958	7156	7084	12899
rejected events	124307	119391	120014	126760	115603	141463		4%	5%	4%	4%	3%	7%
rejected %	88%	87%	54%	87%	58%	77%	grade 1 events	88	102	407	89	228	143
								0%	0%	0%	0%	0%	0%
							grade 2 events	3547	3316	31839	3872	16999	9673
								2%	2%	14%	2%	8%	5%
							grade 3 events	1519	1532	3583	1678	6959	4267
								1%	1%	1%	1%	3%	2%
							grade 4 events	1513	1565	3388	1641	6897	3873
								1%	1%	1%	1%	3%	2%
							grade 5 events	6011	6693	15766	6947	18731	9000
								4%	4%	7%	4%	9%	4%
							grade 6 events	2880	2948	54257	3462	44813	11027
								2%	2%	24%	2%	22%	6%
							grade 7 events	118205	112592	103819	119720	96627	132315
								84%	82%	46%	82%	48%	72%

2.2 Compared Parameters

Parameter	Planned	Actual	Parameter	Planned	Actual
Instrument	ACIS	ACIS	Obspar format version number	7	7
Detector	ACIS-235678	ACIS-235678	Obspar file type	PREDICTED	ACTUAL
Grating	NONE	NONE	Obspar update status	NONE	UPDATED
Data mode	FAINT	FAINT	CCD I0 on	N	N
Observation mode	POINTING	POINTING	CCD I1 on	N	N
[deg] Pointing RA	196.655460	196.5924929079625	CCD I2 on	O1	Y
[deg] Pointing Dec	67.695936	67.70924111220592	CCD I3 on	O2	Y
[deg] Pointing Roll	119.952154	120.16707171937	CCD S0 on	N	N
[mm] SIM focus pos	-0.684267	-0.6828225247311905	CCD S1 on	Y	Y
[mm] SIM defocus	0	0.001444936568705701	CCD S2 on	Y	Y
[mm] SIM translation stage pos	-190.132523	-190.1400660498719	CCD S3 on	Y	Y
[mm] SIM translation stage offset	0	0.00754346686406393	CCD S4 on	Y	Y
[s] Observation start time (MET)	350514257.184000	350512368.7764	CCD S5 on	N	N
Observation start date	2009-02-08T21:03:11	2009-02-08T20:32:48	Number of optional ACIS chips dropped	0	0
[s] Observation end time (MET)	350528057.184000	350528974.28972	On-chip summing requested	N	N
Observation end date	2009-02-09T00:53:11	2009-02-09T01:09:34	Subarray requested	NONE	NONE
Read mode	TIMED	TIMED	Alternating exposures requested	N	N
			[s] Primary exposure time	0.000000	3.2

2.3 Aspect



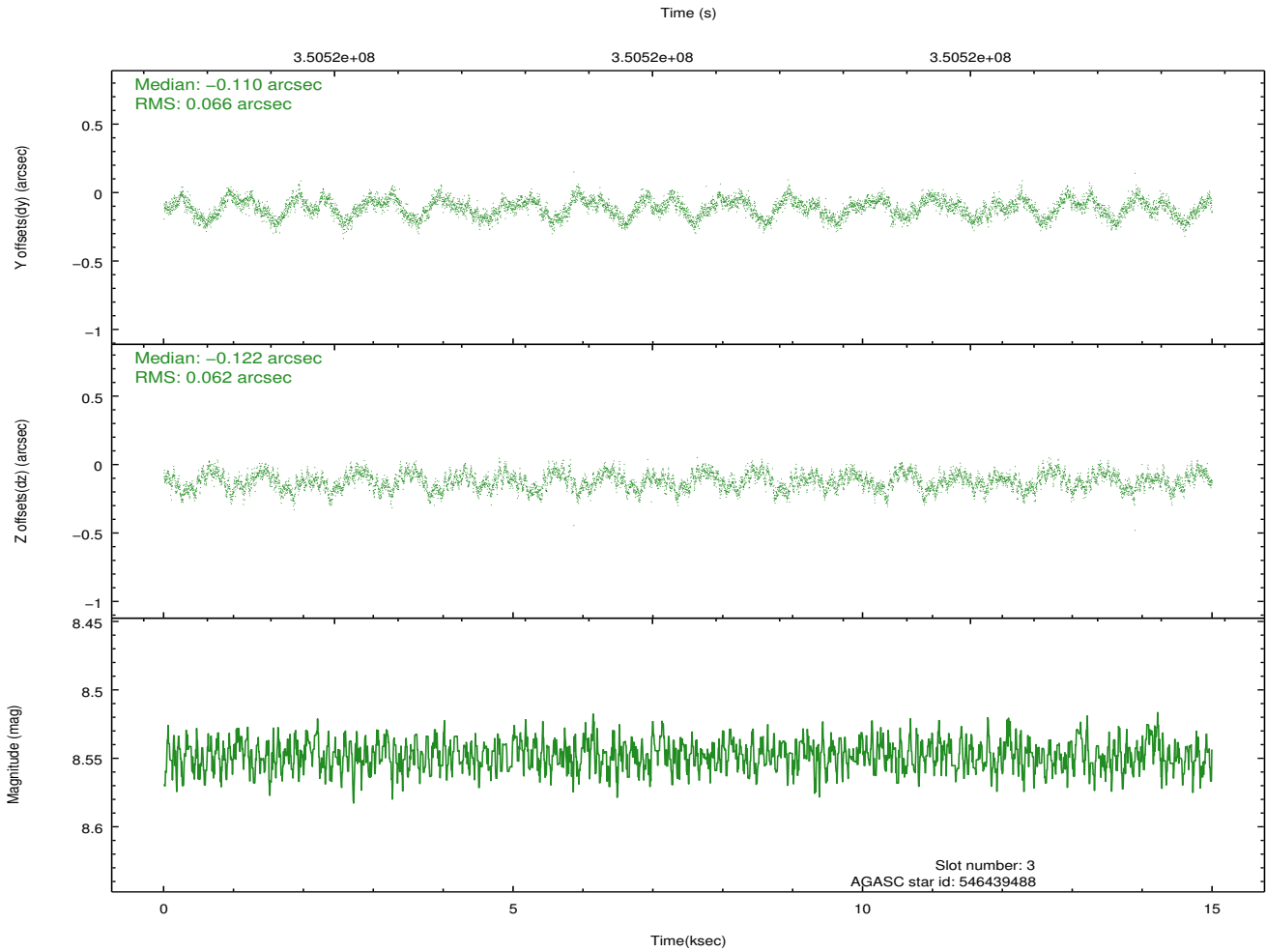
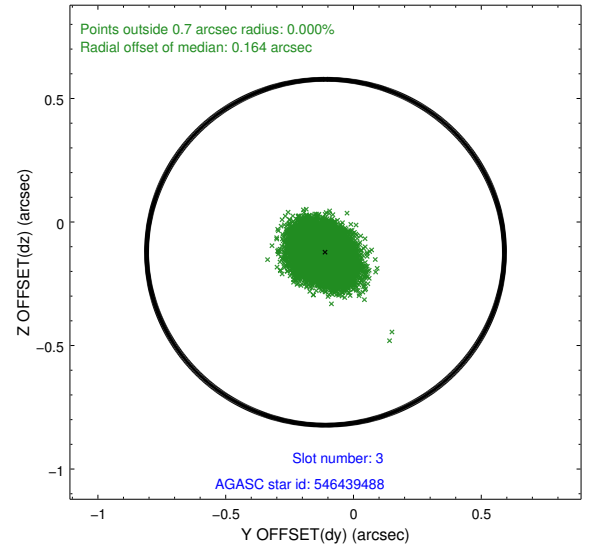
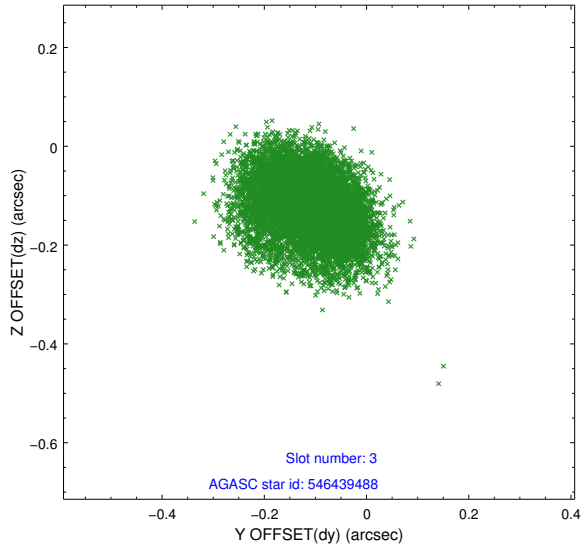


Slot Statistics

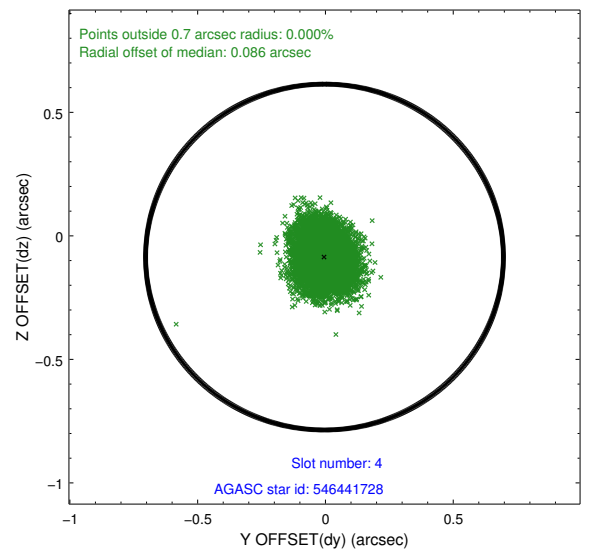
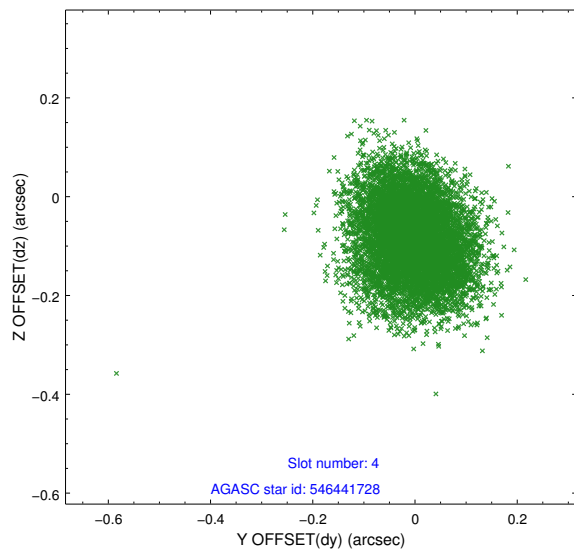
slot	status	id	mag	n_pts	med_dy	med_dz	dr1	dr2	ra	dec	mean_y	mean_z
0	FID	ACIS-S-2	6.92	3657	-0.030	-0.008	0.007	0.011	0.000000	0.000000	-765.81	-1735.66
1	FID	ACIS-S-4	7.00	3656	0.114	0.017	0.006	0.012	0.000000	0.000000	2147.45	172.56
2	FID	ACIS-S-5	7.04	3657	-0.115	-0.000	0.007	0.012	0.000000	0.000000	-1818.37	166.52
3	GUIDE	546439488	8.55	7312	-0.110	-0.122	0.099	0.151	195.857640	67.356703	-500.33	1564.26
4	GUIDE	546441728	9.34	7303	-0.004	-0.086	0.099	0.160	196.111276	67.333453	-750.82	1304.42
5	GUIDE	576847928	9.19	7307	0.064	-0.055	0.102	0.160	196.187152	67.527173	-202.63	860.74
6	GUIDE	576848952	8.93	7308	0.194	0.252	0.089	0.142	198.276729	67.557938	-1517.09	-1696.52
7	GUIDE	546440816	6.76	7313	-0.143	0.016	0.051	0.081	198.250805	67.309688	-2285.49	-1238.55

2.4 Star Slots

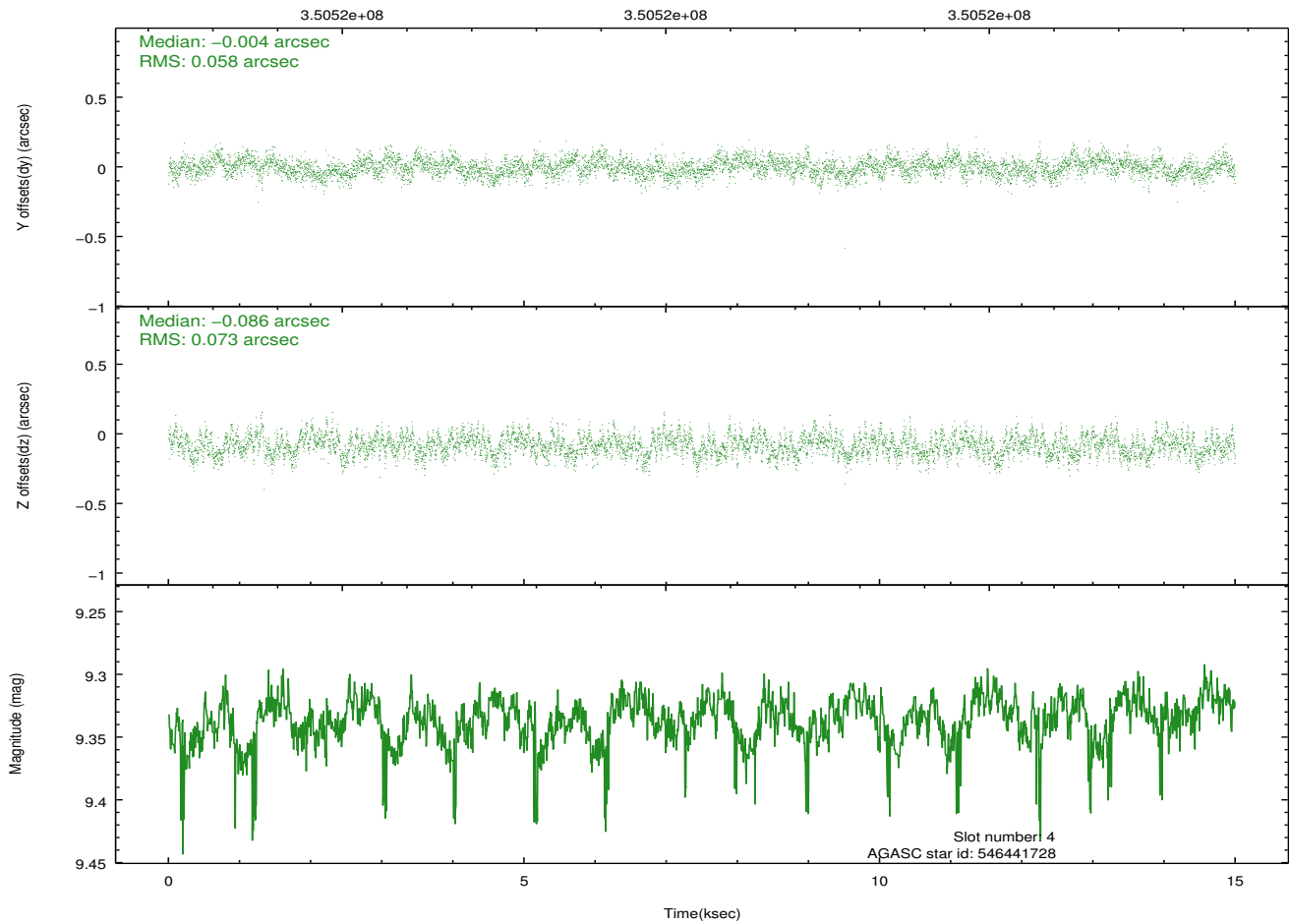
2.4.1 Slot 3



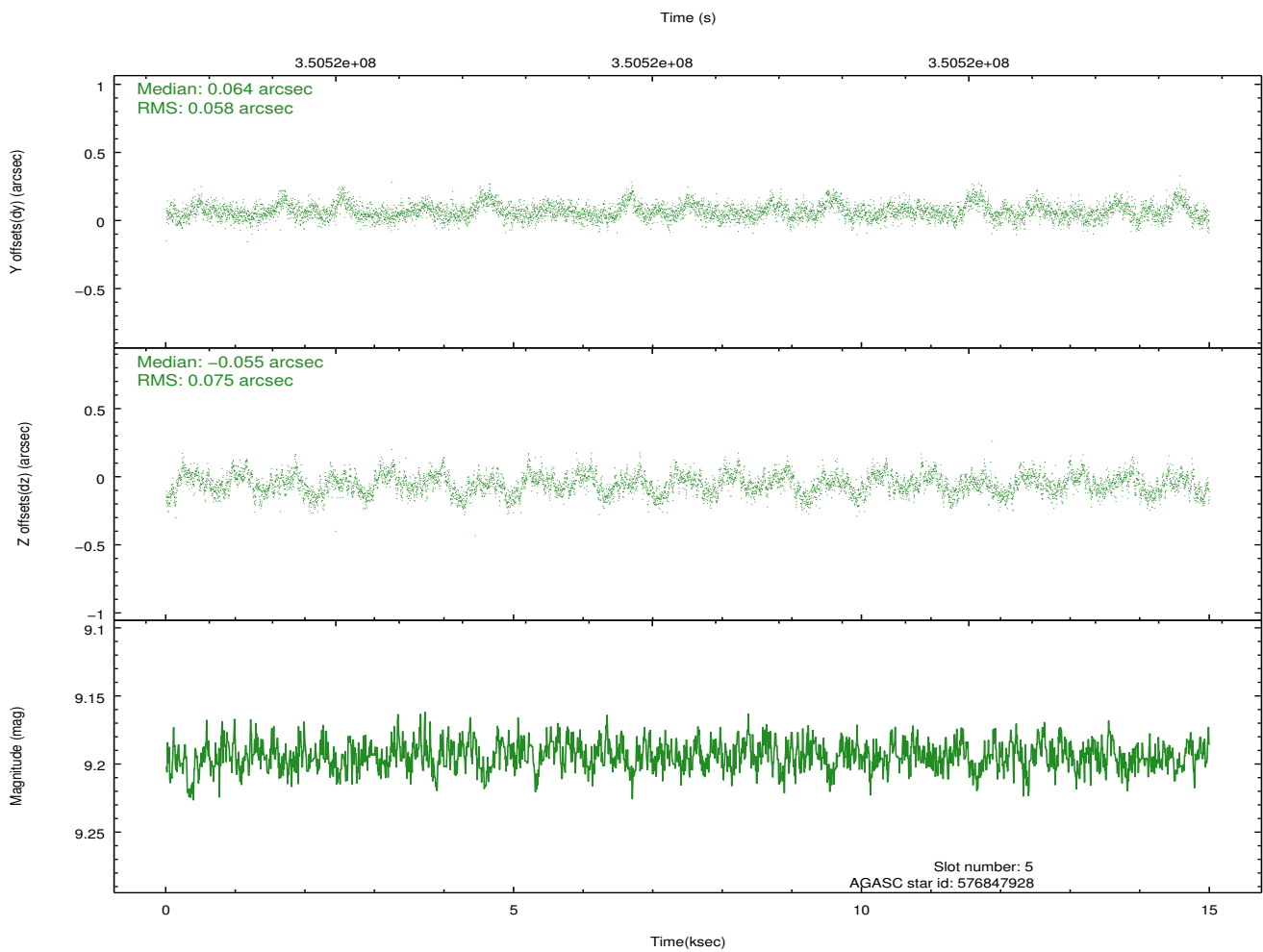
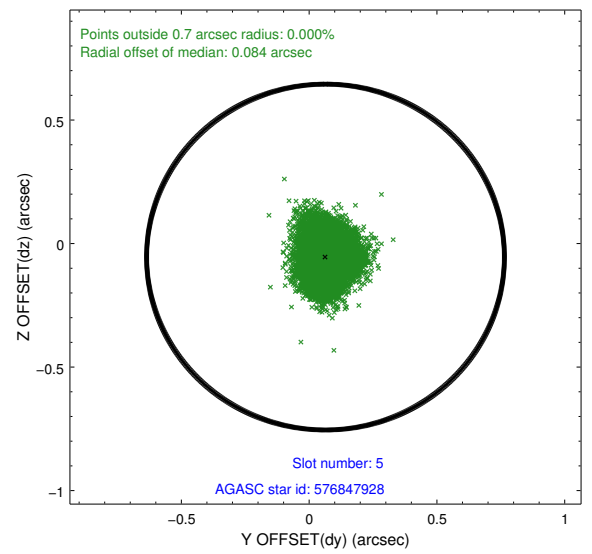
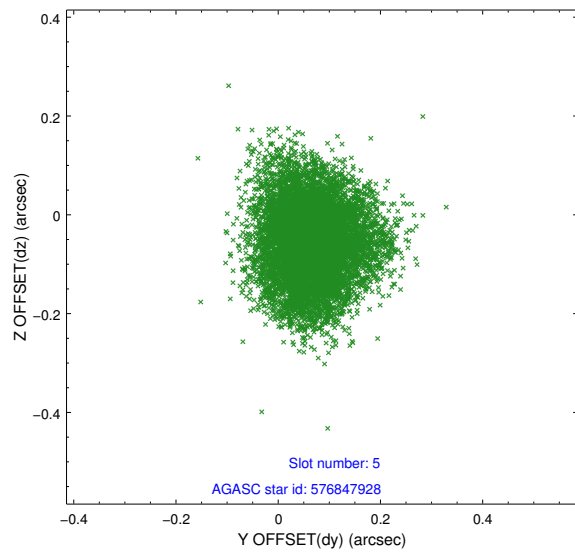
2.4.2 Slot 4



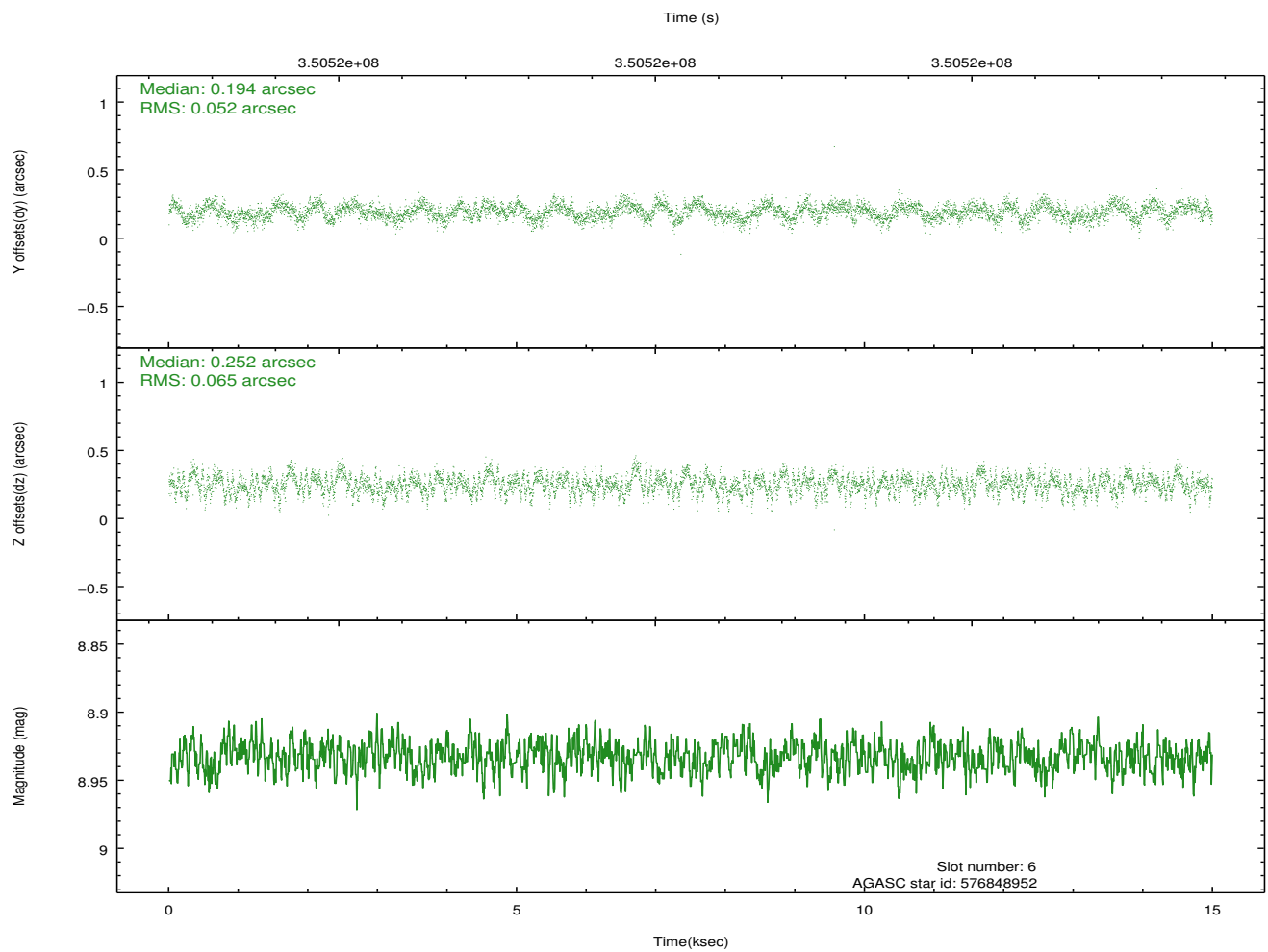
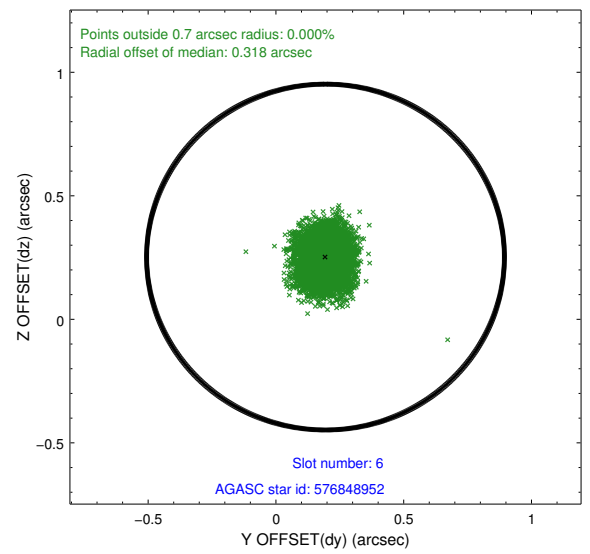
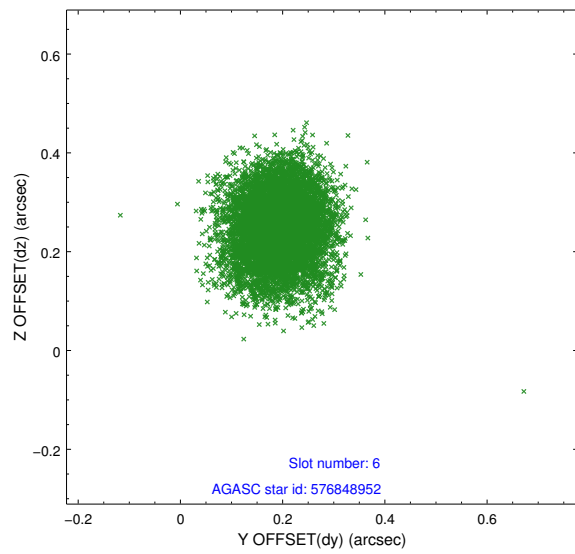
Time (s)



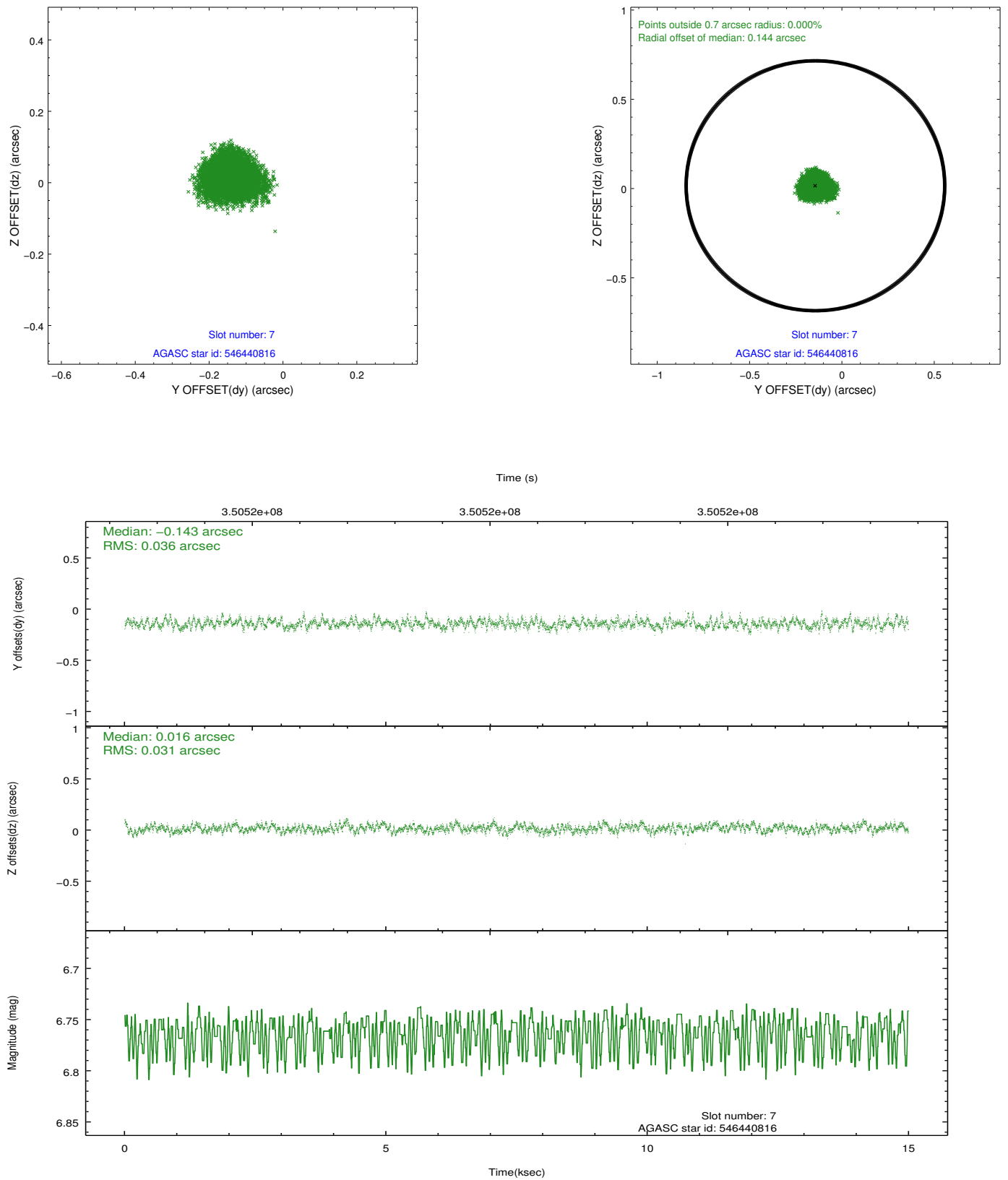
2.4.3 Slot 5



2.4.4 Slot 6

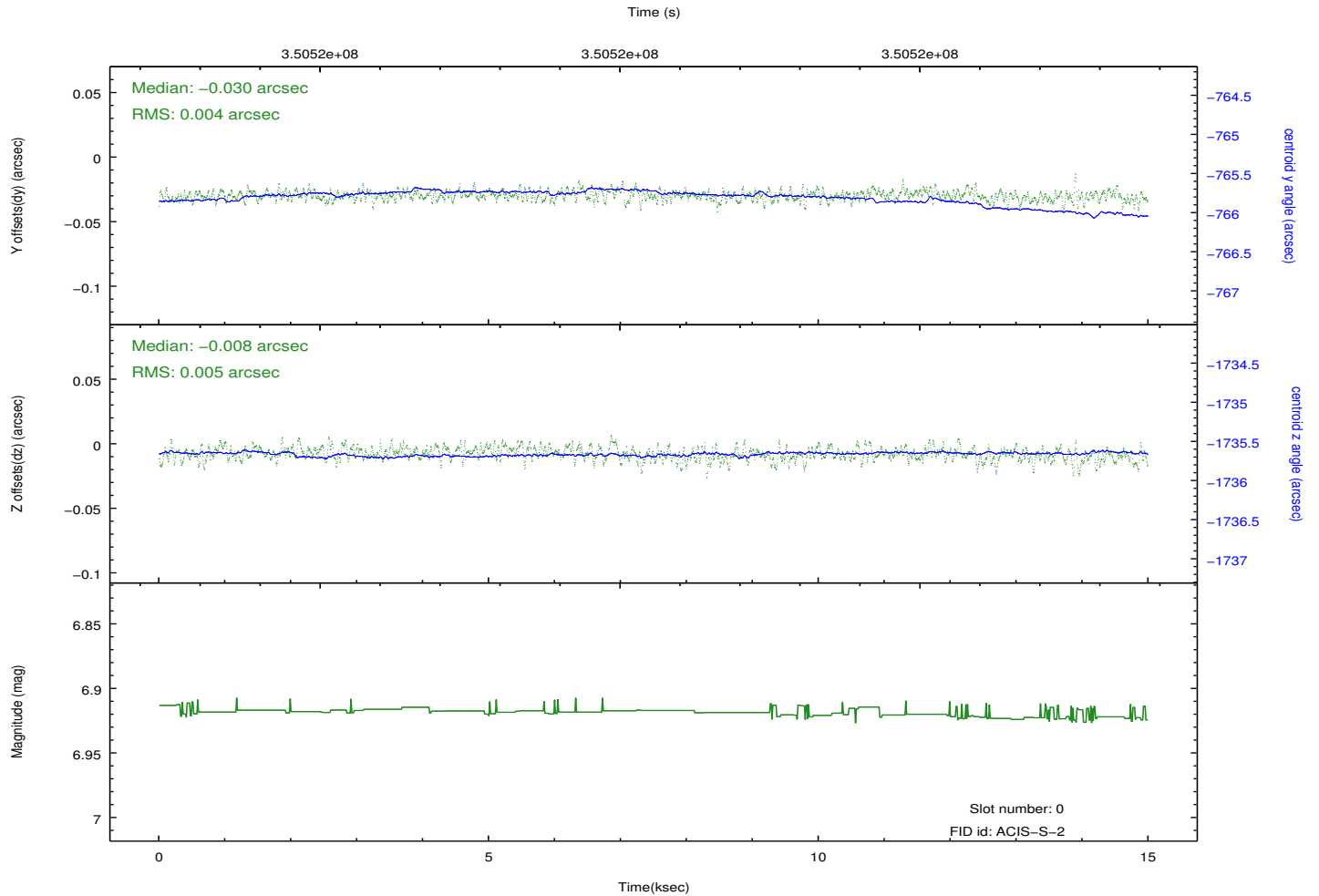
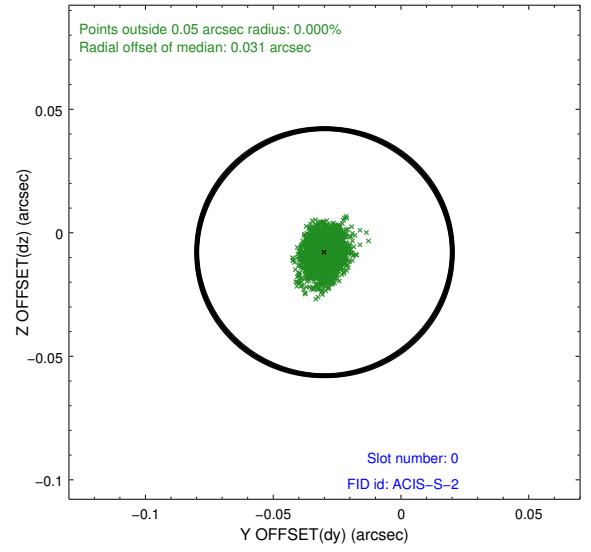
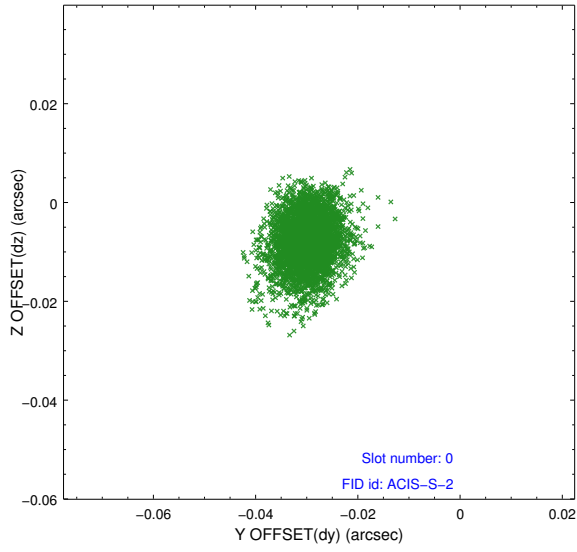


2.4.5 Slot 7

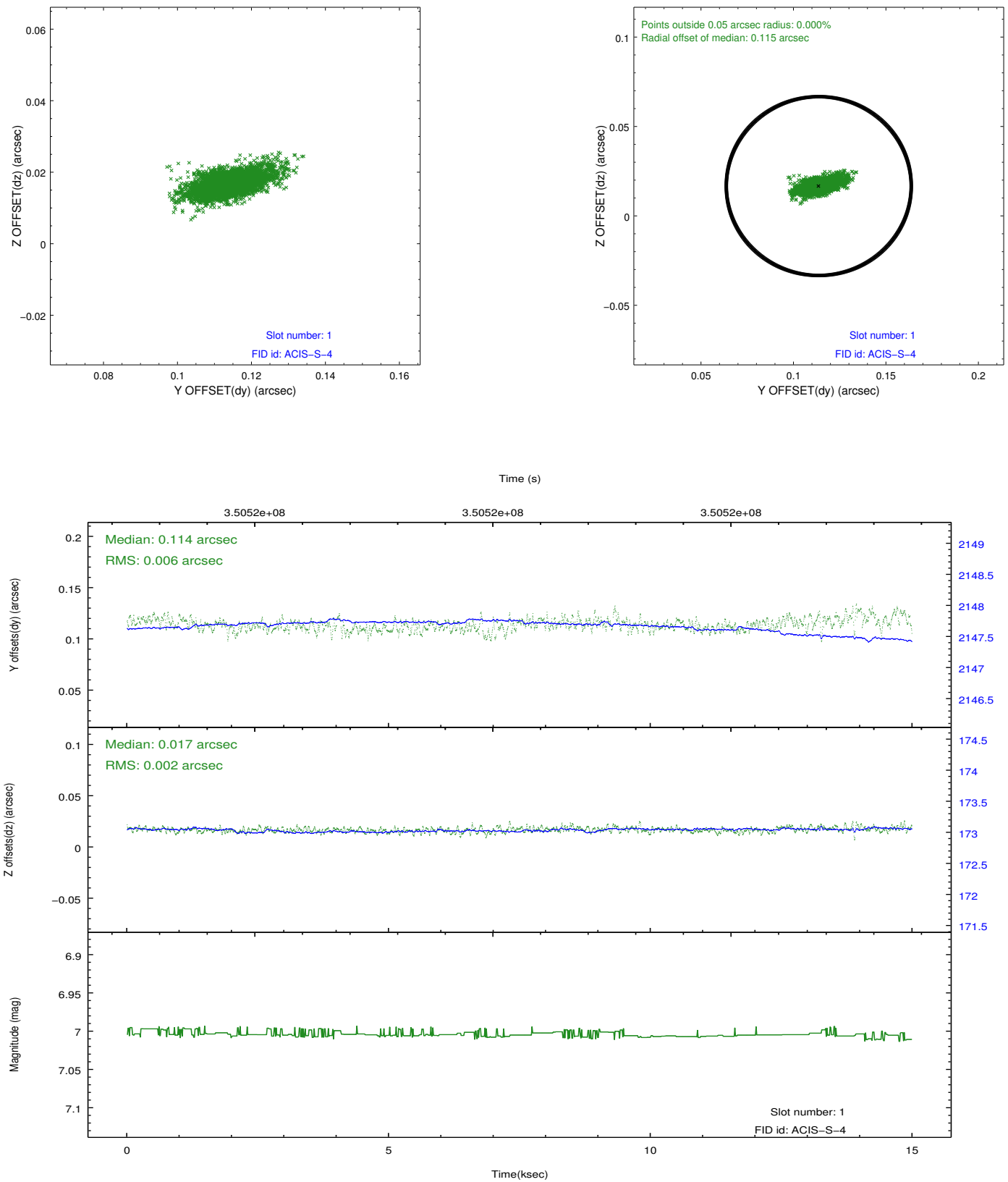


2.5 FID Slots

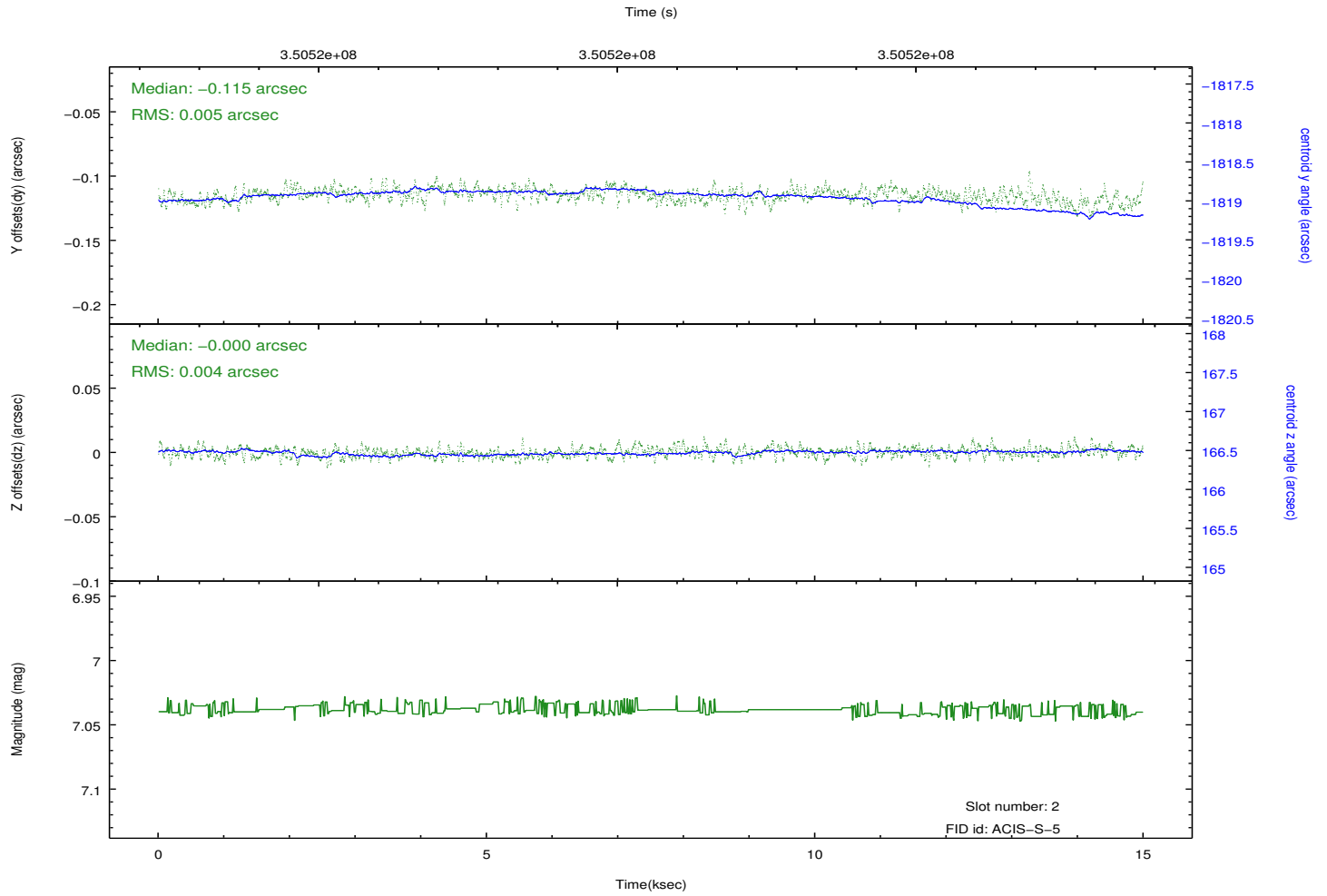
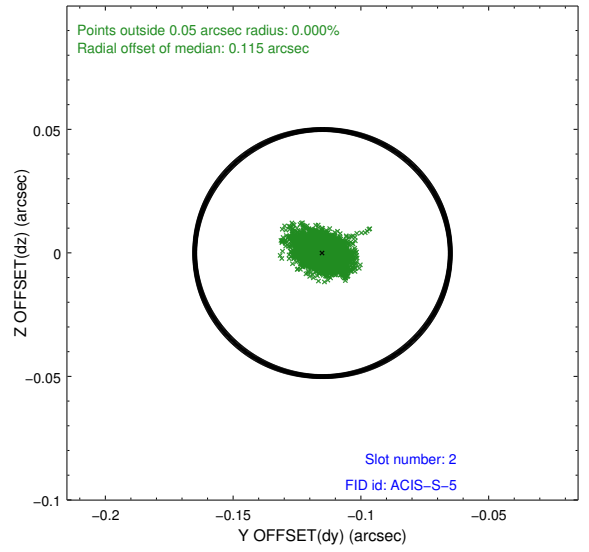
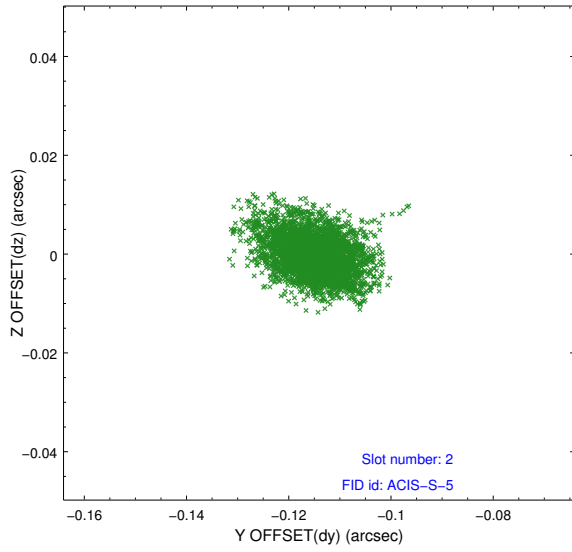
2.5.1 Slot 0



2.5.2 Slot 1



2.5.3 Slot 2



A Summary

A.1 Status

V&V Scientist	Jen Lauer
V&V Date (YYYY-MM-DD)	2012.06.06
V&V Edition	1
V&V Disposition and Status	OK
V&V Charge Time	13.7151999

A.2 Comments

Roll preference not met: preferred roll 90 +/- 30 degrees, actual roll 120.167 degrees.