

V&V Reference Report

L2 ASCDS Version : 8.4.4

Observation 9737 - L2 Version 2
Chandra X-Ray Center

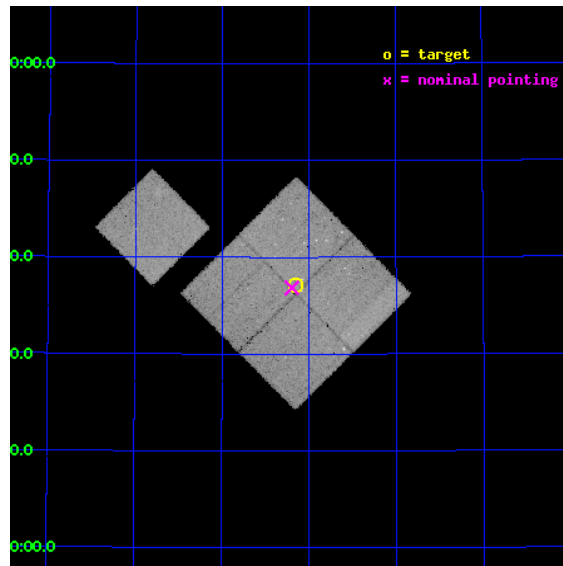
L2 Processing Date : May 21 2012

Contents

1	Front	2
2	OBI	3
2.1	OBI	3
2.1.1	Images	3
2.1.2	Bias	3
2.1.3	Parameters	4
2.1.4	Events	4
2.2	Compared Parameters	5
2.3	Aspect	6
2.4	Star Slots	9
2.4.1	Slot 3	9
2.4.2	Slot 4	10
2.4.3	Slot 5	11
2.4.4	Slot 6	12
2.4.5	Slot 7	13
2.5	FID Slots	14
2.5.1	Slot 0	14
2.5.2	Slot 1	15
2.5.3	Slot 2	16
A	Summary	17
A.1	Status	17
A.2	Comments	17

1 Front

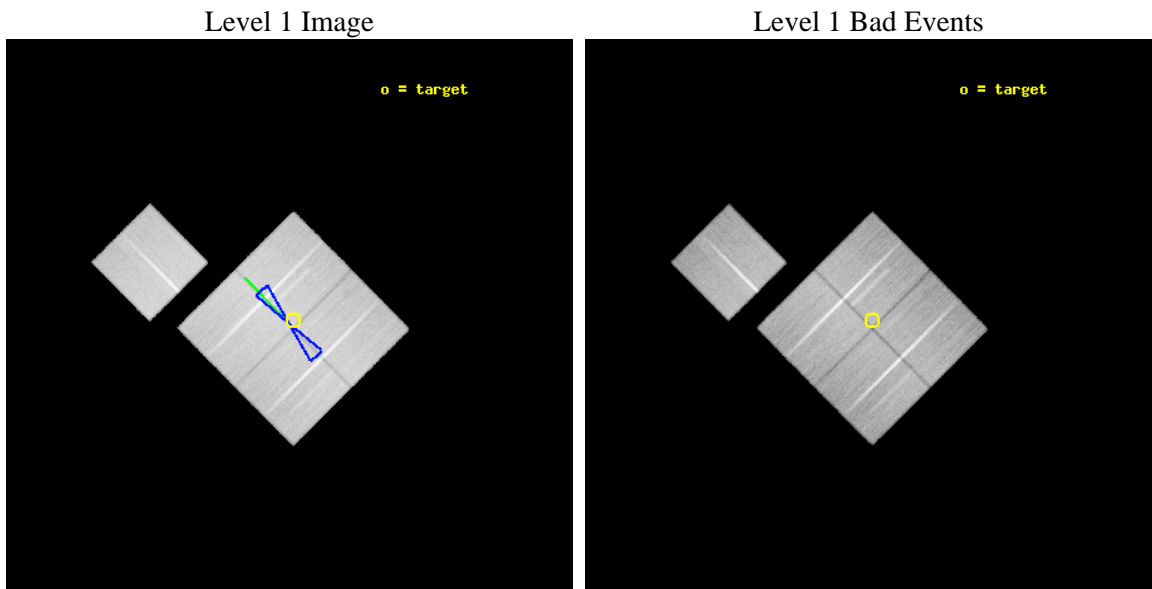
seq_num	900798	Sequence number
obs_id	9737	Observation id
title	The Evolution of Faint AGN at High Redshift	Proposal title
observer	Prof Kirpal Nandra	Principal investigator
object	AEGIS-3	Source name
dtcycle	0	
cycle	P	events from which exps? Prim/Second/Both
ra_targ	214.5375	Observer's specified target RA [deg]
dec_targ	52.617889	Observer's specified target Dec [deg]
ra_nom	214.54931027532	Nominal RA [deg]
dec_nom	52.614148733384	Nominal Dec [deg]
roll_nom	315.19930437364	Nominal Roll [deg]
revision	2	Processing version of data
ontime	50133.159425259	Sum of GTIs [s]
livetime	49478.132789873	Livetime [s]
ontime0	50117.454563797	Sum of GTIs [s]
ontime1	50133.159405351	Sum of GTIs [s]
ontime2	50114.313653171	Sum of GTIs [s]
ontime3	50133.159425259	Sum of GTIs [s]
ontime6	50133.159425259	Sum of GTIs [s]
l2events	177373	Number of level 2 events



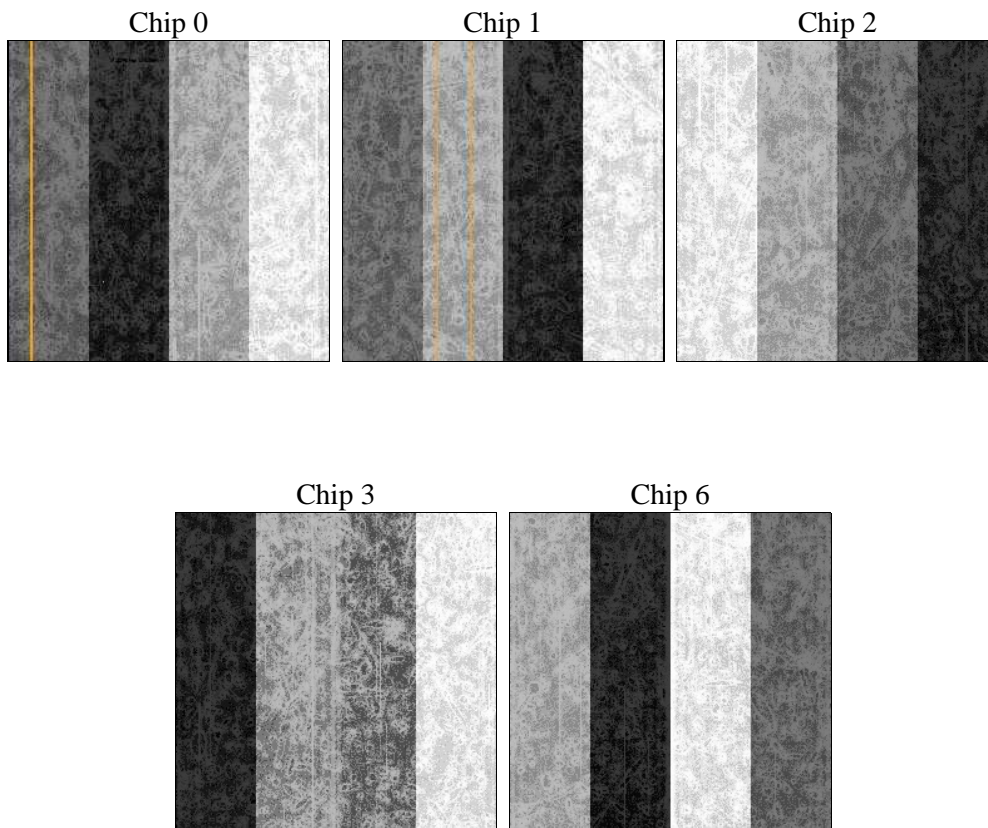
2 OBI

2.1 OBI

2.1.1 Images



2.1.2 Bias



2.1.3 Parameters

obi_num	0	Obi number	sched_exp_time	50000.000000	[s] Scheduled observation exposure time
ascdsver	8.4.4	Processing system revision	ontime	50133.159425259	Sum of GTIs [s]
caldbver	4.4.9	 	ontime0	50117.454563797	Sum of GTIs [s]
date	2012-05-21T22:21:44	Date and time of file creation	ontime1	50133.159405351	Sum of GTIs [s]
revision	2	Processing version of data	ontime2	50114.313653171	Sum of GTIs [s]
			ontime3	50133.159425259	Sum of GTIs [s]
			ontime6	50133.159425259	Sum of GTIs [s]
			l1events	2084615	Number of level 1 events

2.1.4 Events

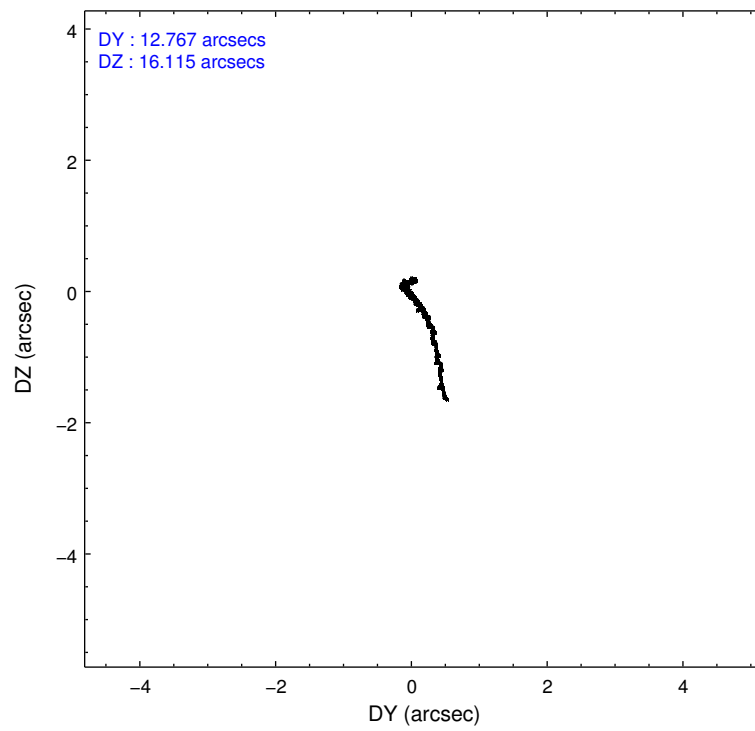
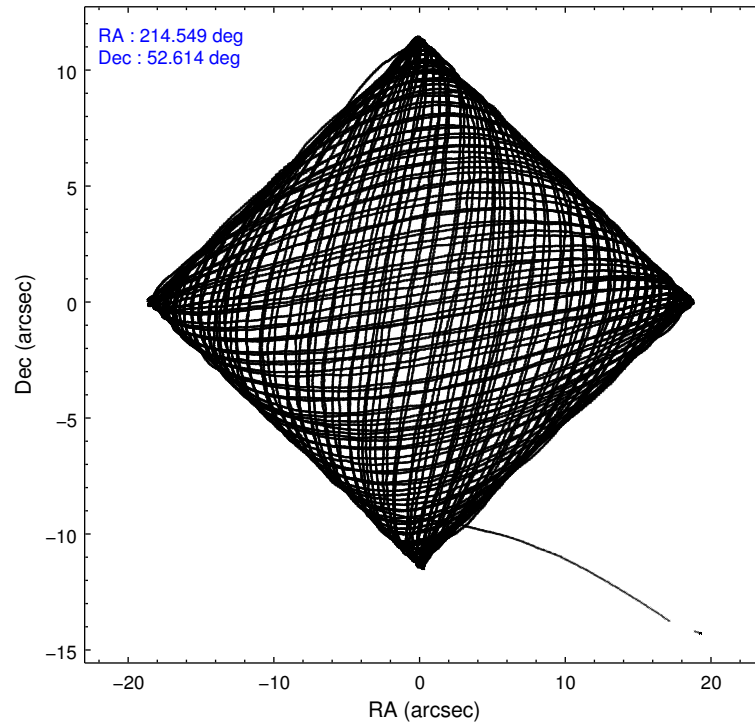
	ccd 0	ccd 1	ccd 2	ccd 3	ccd 6
level 1 events	398248	394562	449931	421792	420082
rejected events	356528	347162	408882	380298	377611
rejected %	89%	87%	90%	90%	89%

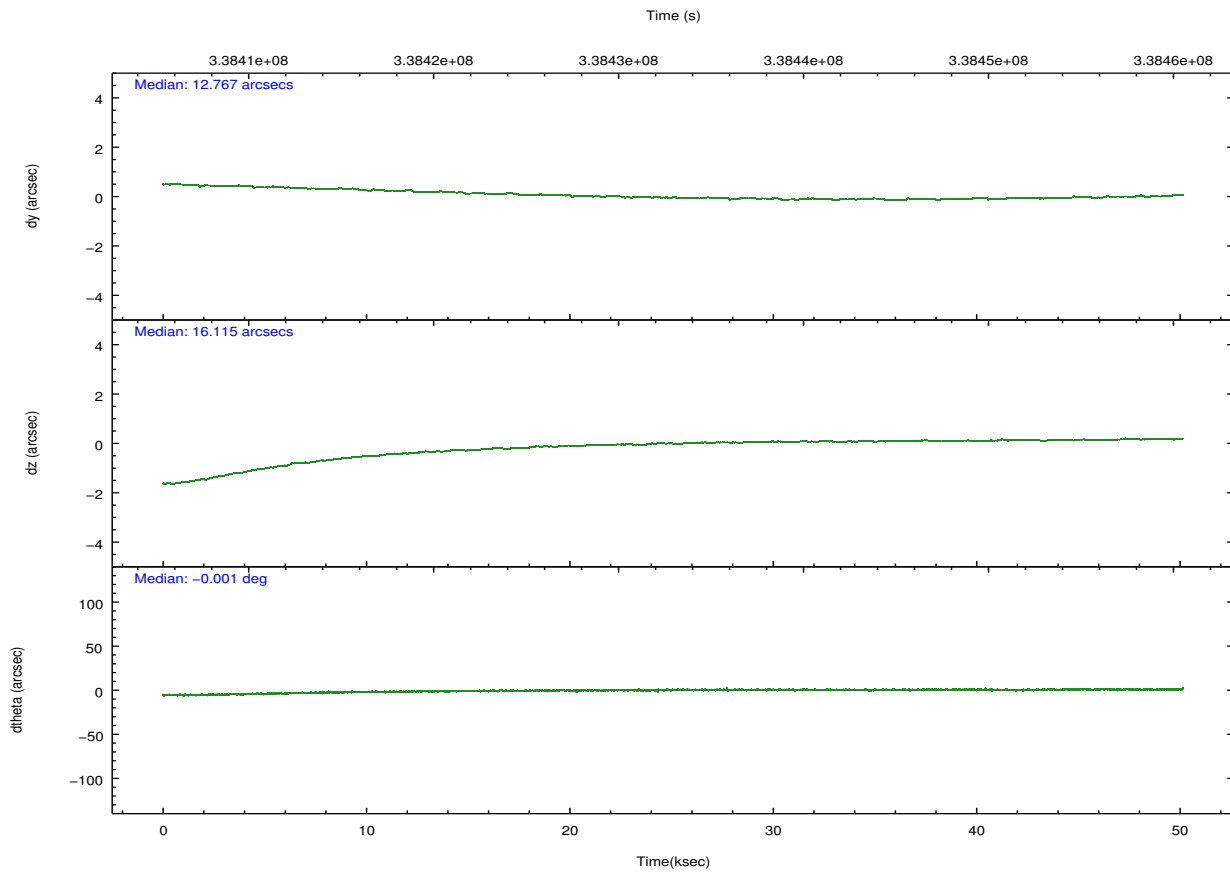
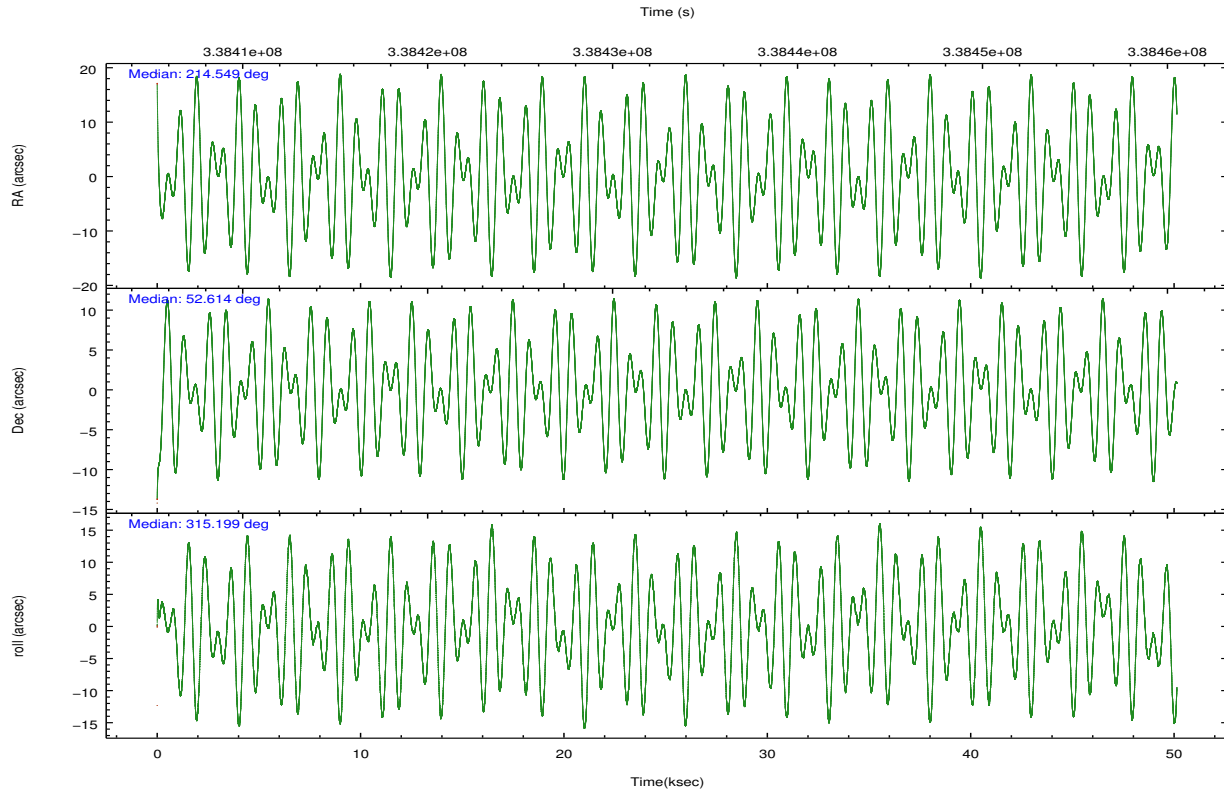
	ccd 0	ccd 1	ccd 2	ccd 3	ccd 6
grade 0 events	14467	17279	14715	15179	14819
	3%	4%	3%	3%	3%
grade 1 events	209	236	234	260	224
	0%	0%	0%	0%	0%
grade 2 events	10476	10825	10126	9085	9589
	2%	2%	2%	2%	2%
grade 3 events	4671	5050	4424	4609	4706
	1%	1%	0%	1%	1%
grade 4 events	4432	4951	4459	4617	4612
	1%	1%	0%	1%	1%
grade 5 events	14741	16367	13815	17391	16818
	3%	4%	3%	4%	4%
grade 6 events	8080	9772	7791	8420	9188
	2%	2%	1%	1%	2%
grade 7 events	341172	330082	394367	362231	360126
	85%	83%	87%	85%	85%

2.2 Compared Parameters

Parameter	Planned	Actual	Parameter	Planned	Actual
Instrument	ACIS	ACIS	Obspar format version number	7	7
Detector	ACIS-01236	ACIS-01236	Obspar file type	PREDICTED	ACTUAL
Grating	NONE	NONE	Obspar update status	NONE	UPDATED
Data mode	VFAINT	VFAINT	CCD I0 on	Y	Y
Observation mode	POINTING	POINTING	CCD I1 on	Y	Y
[deg] Pointing RA	214.505473	214.5493102753233	CCD I2 on	Y	Y
[deg] Pointing Dec	52.621071	52.6141487333843	CCD I3 on	Y	Y
[deg] Pointing Roll	315.025452	315.1993043736388	CCD S0 on	N	N
[deg] Roll angle	50.000000	50.000000	CCD S1 on	N	N
[deg] Roll tolerance	10.000000	10.000000	CCD S2 on	O1	Y
Roll constraint allows 180D rotation	Y	Y	CCD S3 on	N	N
[mm] SIM focus pos	-0.782348	-0.7809083437167272	CCD S4 on	N	N
[mm] SIM defocus	0	0.001439871863259334	CCD S5 on	N	N
[mm] SIM translation stage pos	-233.592463	-233.5874344608287	Number of optional ACIS chips dropped	0	0
[mm] SIM translation stage offset	0	-0.005018542100998502	On-chip summing requested	N	N
[s] Observation start time (MET)	338408012.184000	338406780.95353	Subarray requested	NONE	NONE
Observation start date	2008-09-21T18:12:27	2008-09-21T17:53:00	Alternating exposures requested	N	N
[s] Observation end time (MET)	338458012.184000	338458814.56859	[s] Primary exposure time	0.000000	3.1
Observation end date	2008-09-22T08:05:47	2008-09-22T08:20:14			
Read mode	TIMED	TIMED			

2.3 Aspect



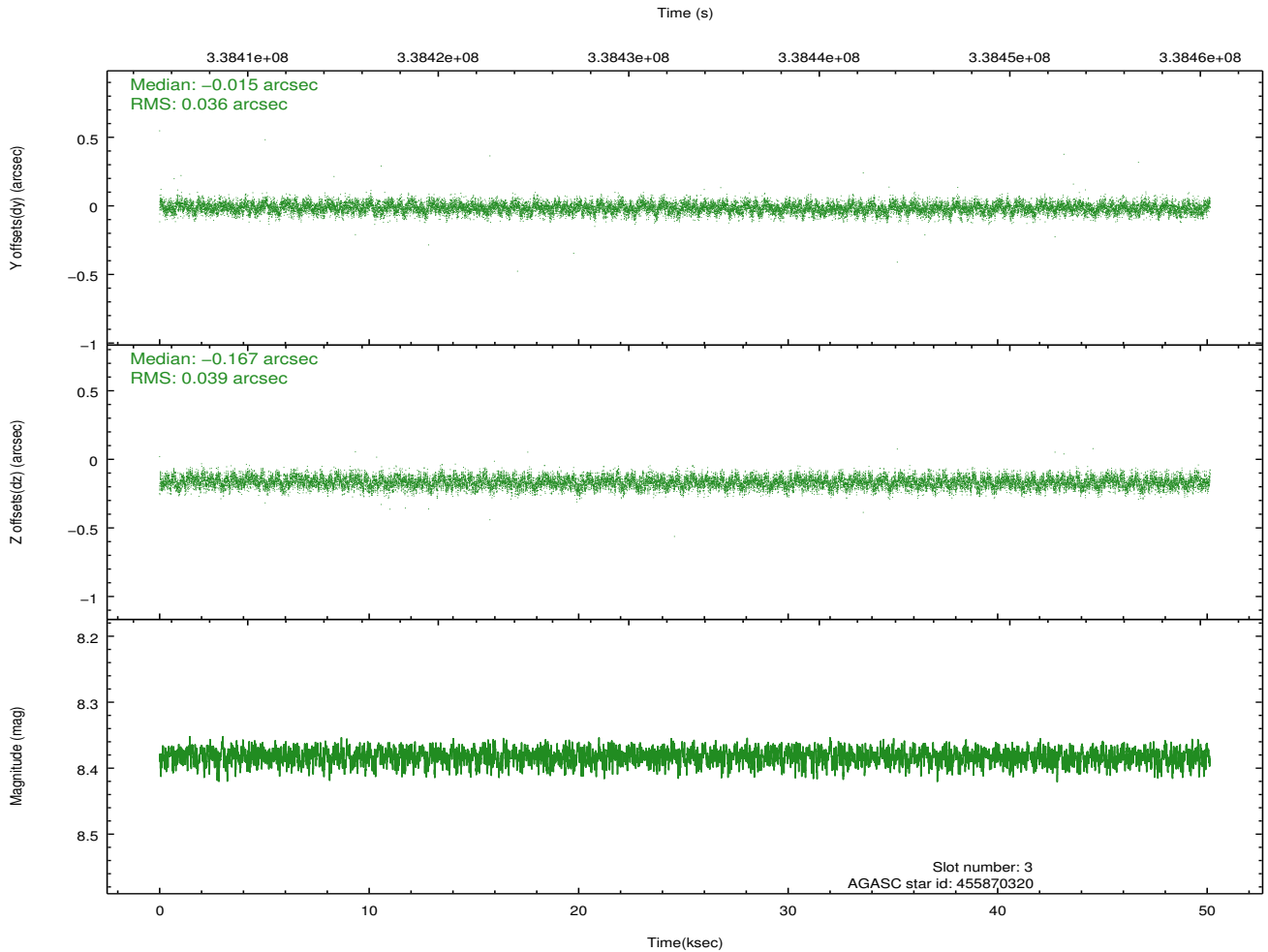
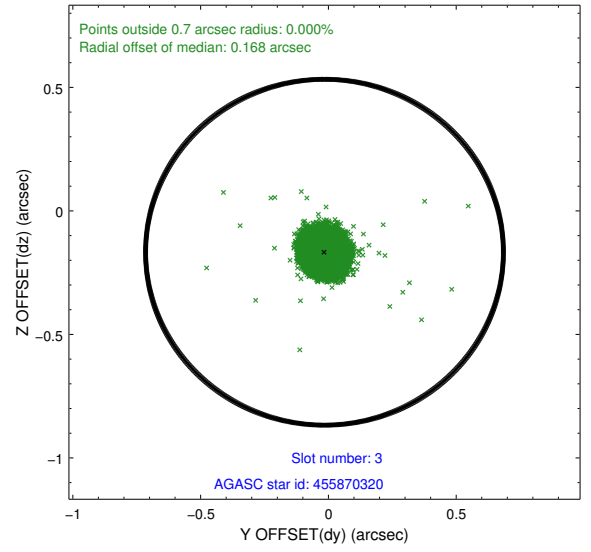
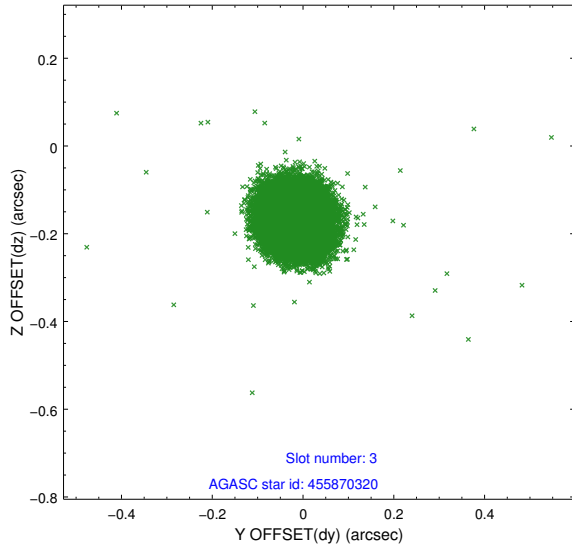


Slot Statistics

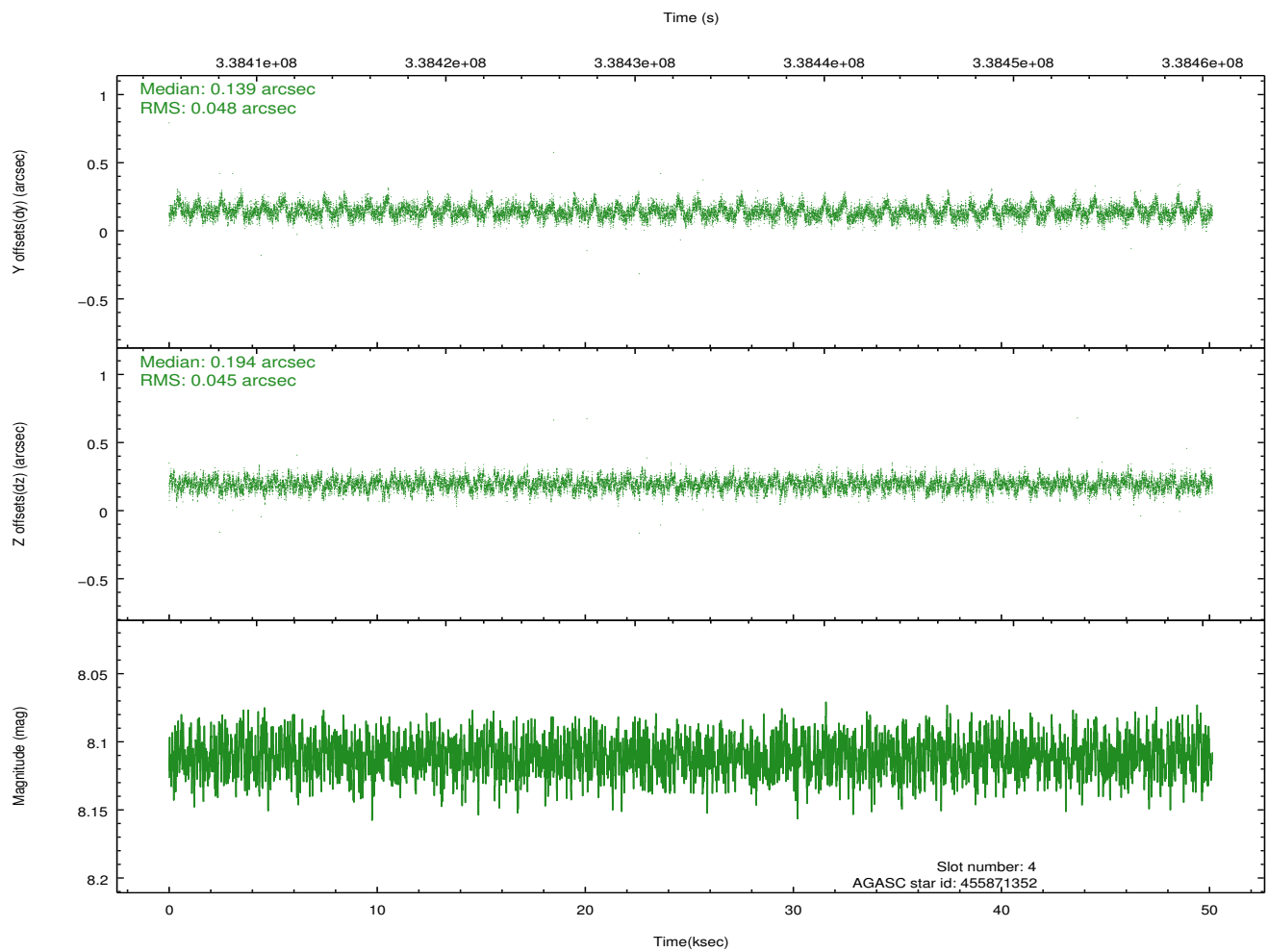
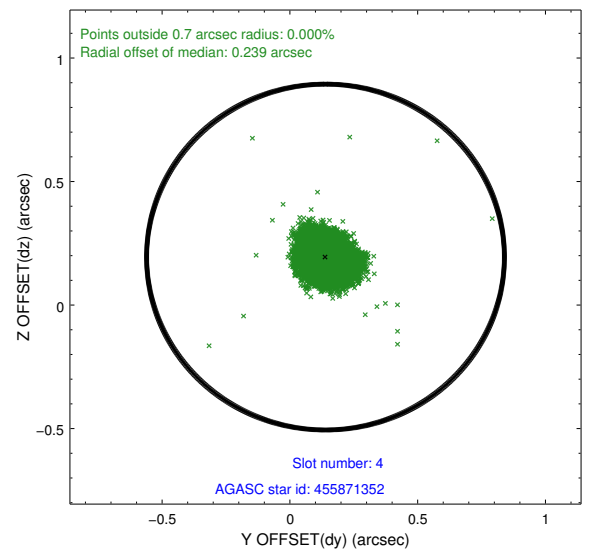
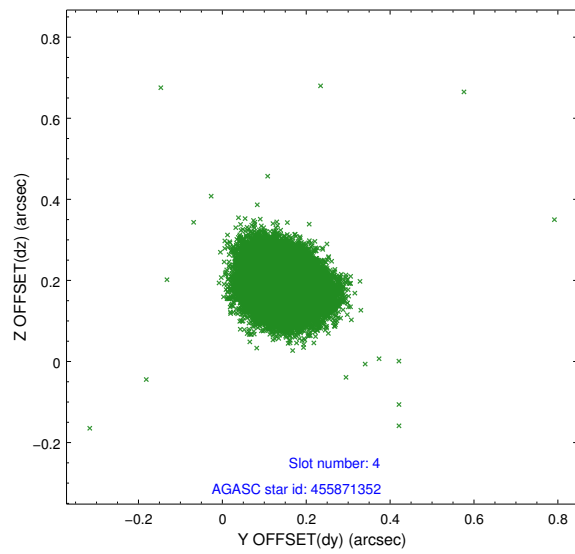
slot	status	id	mag	n_pts	med_dy	med_dz	dr1	dr2	ra	dec	mean_y	mean_z
0	FID	ACIS-I-1	7.00	12228	0.038	-0.016	0.008	0.038	0.000000	0.000000	926.70	-839.54
1	FID	ACIS-I-5	6.98	12229	-0.174	0.052	0.013	0.030	0.000000	0.000000	-1821.61	1058.05
2	FID	ACIS-I-6	6.99	12228	0.043	0.034	0.014	0.045	0.000000	0.000000	392.31	1702.49
3	GUIDE	455870320	8.38	24447	-0.015	-0.167	0.056	0.090	214.874440	52.401638	1130.56	15.51
4	GUIDE	455871352	8.11	24450	0.139	0.194	0.070	0.113	215.099961	52.172669	2066.08	-209.96
5	GUIDE	505806936	7.01	24457	-0.066	-0.139	0.073	0.122	213.820815	52.535927	-848.66	-1271.33
6	GUIDE	505812088	8.13	24453	-0.034	-0.109	0.069	0.108	214.186617	53.263562	-2121.43	1152.15
7	GUIDE	504894728	8.81	24442	-0.032	0.222	0.065	0.106	213.220892	52.722550	-2257.08	-1703.05

2.4 Star Slots

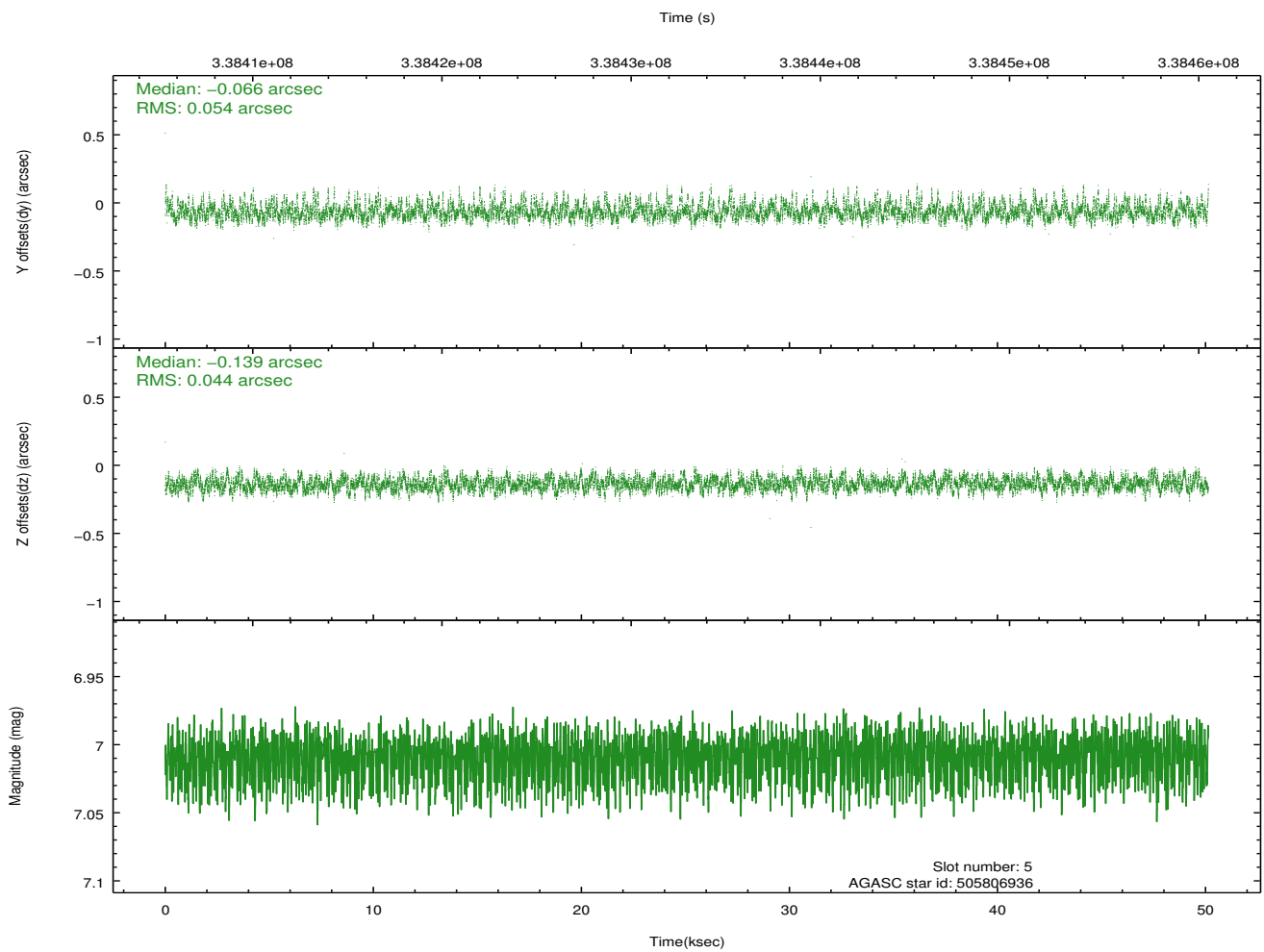
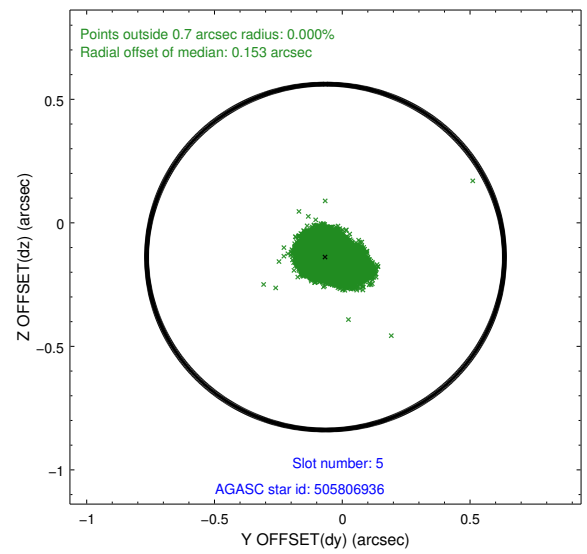
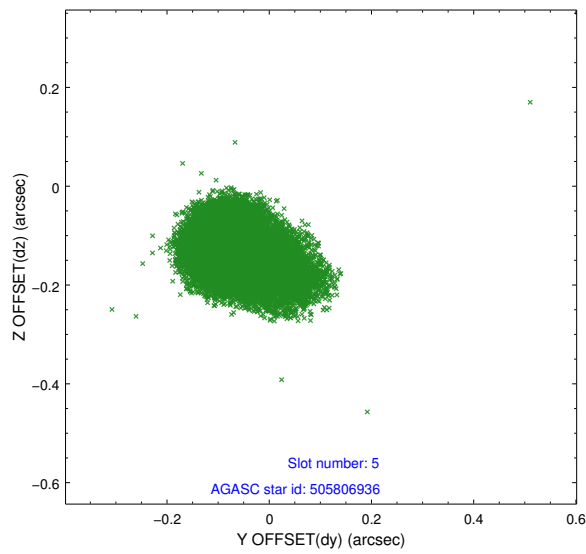
2.4.1 Slot 3



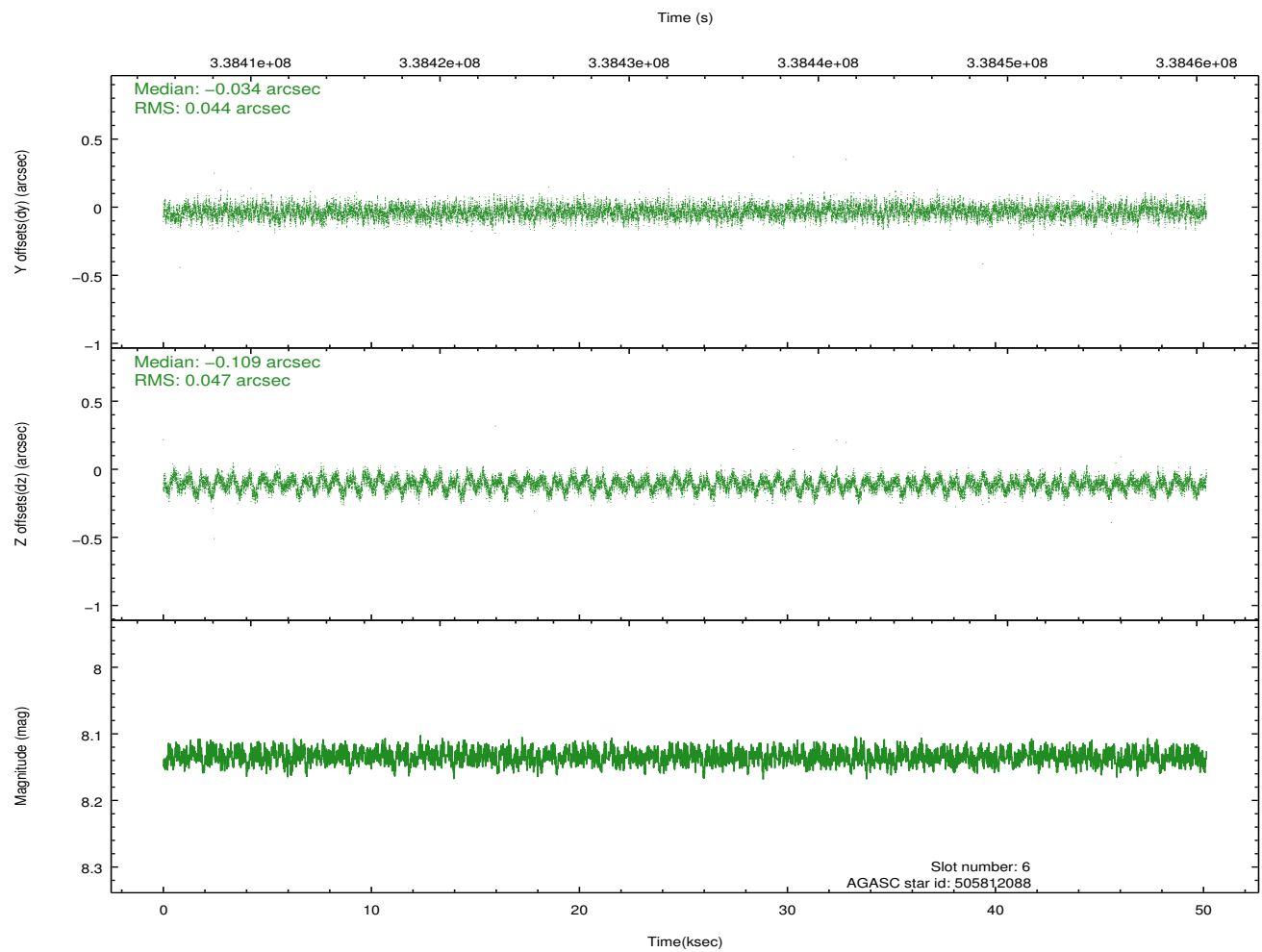
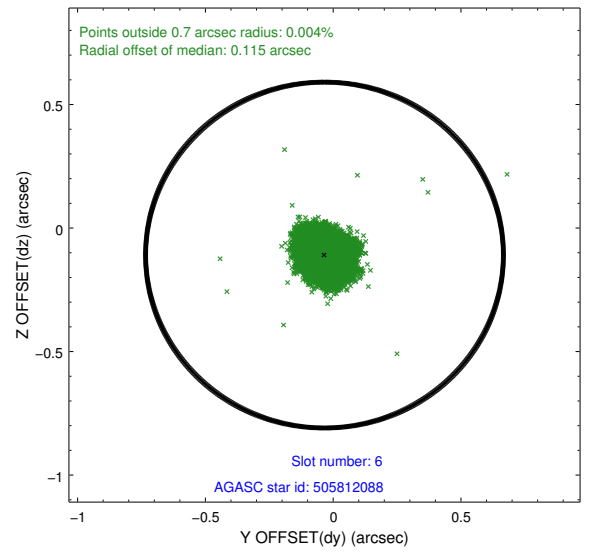
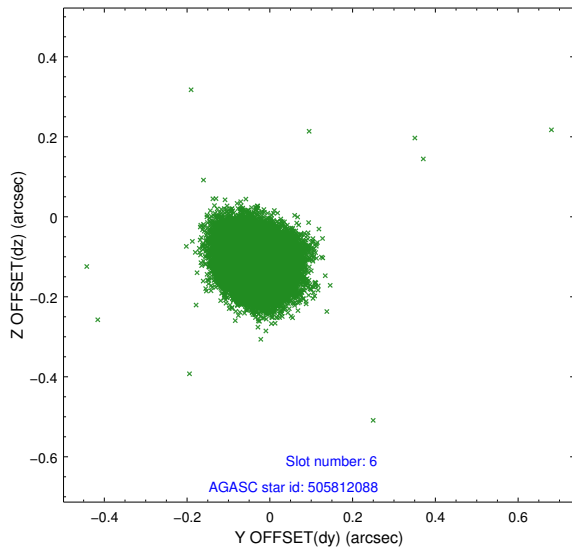
2.4.2 Slot 4



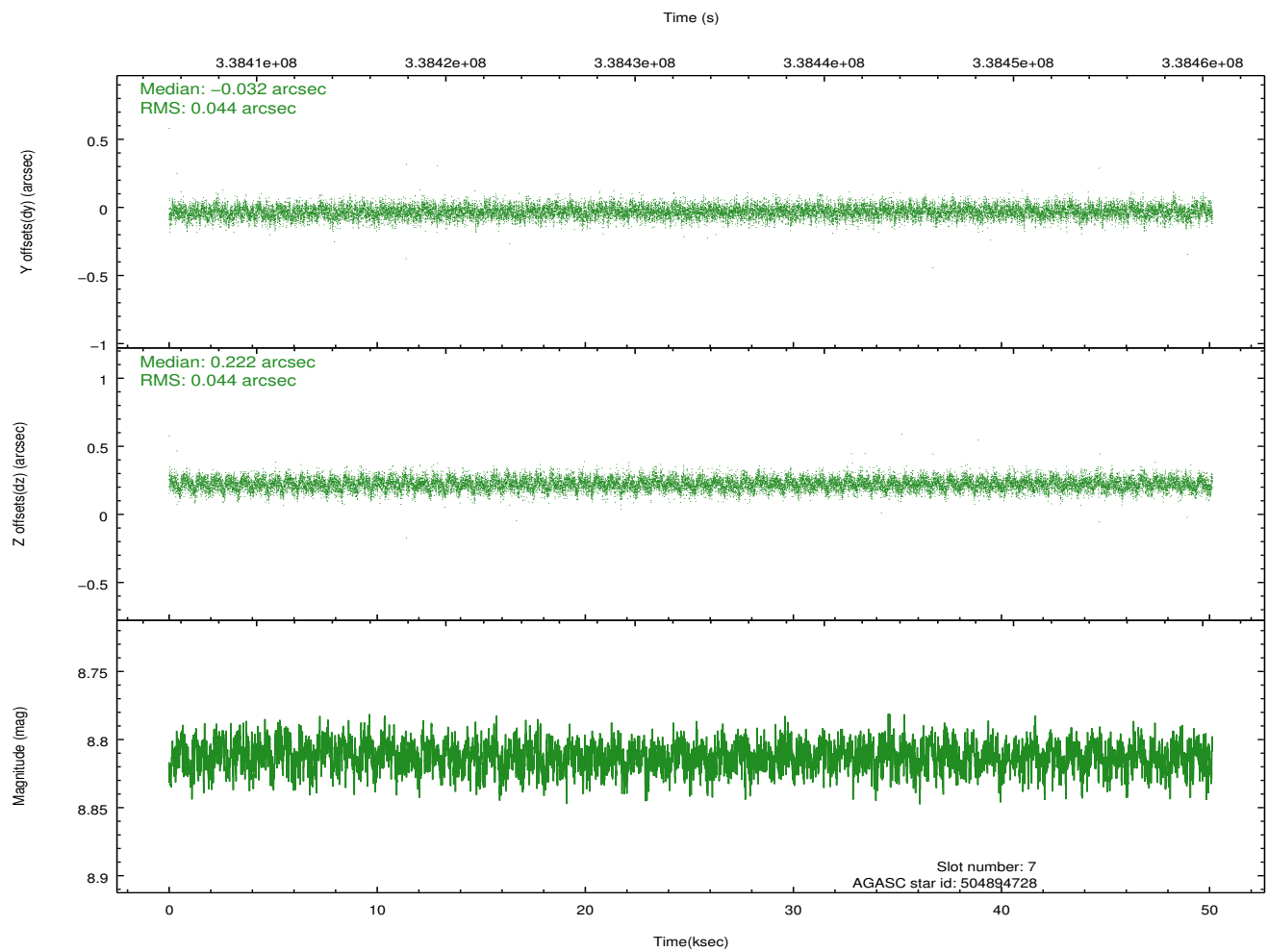
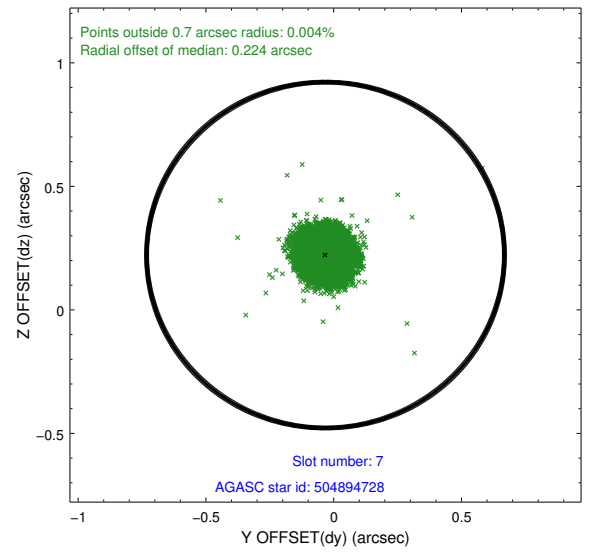
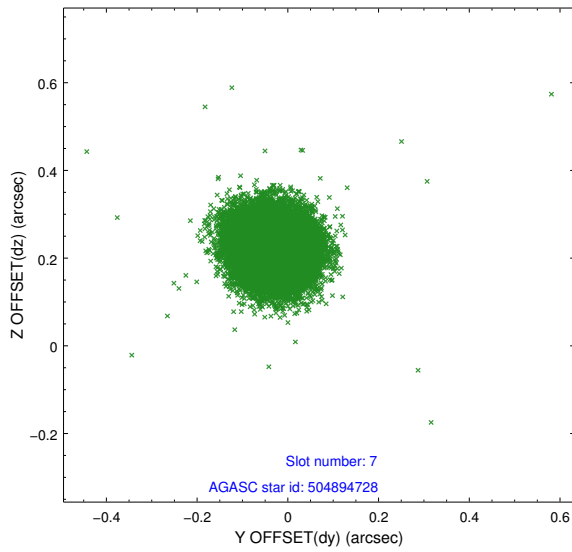
2.4.3 Slot 5



2.4.4 Slot 6

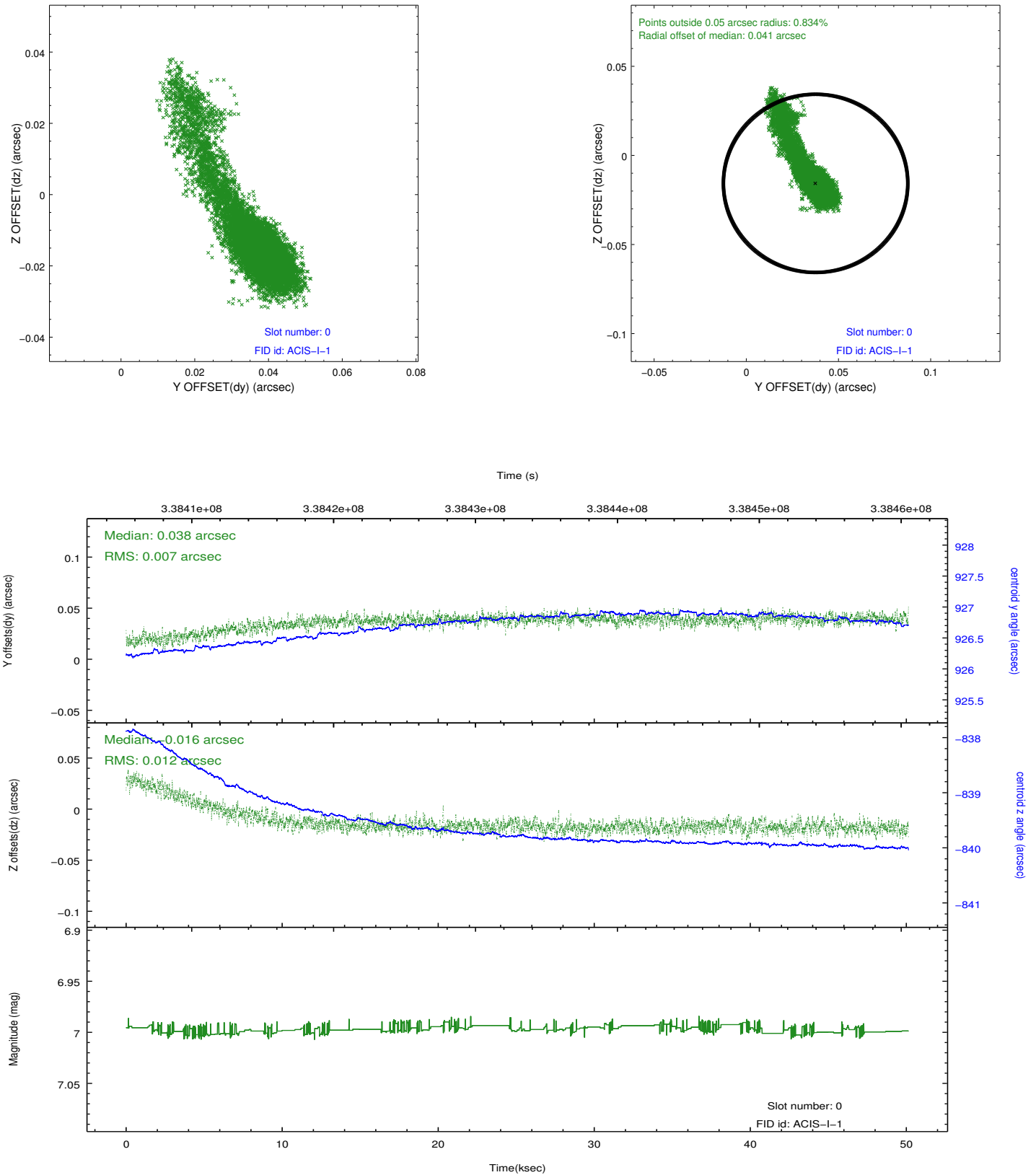


2.4.5 Slot 7

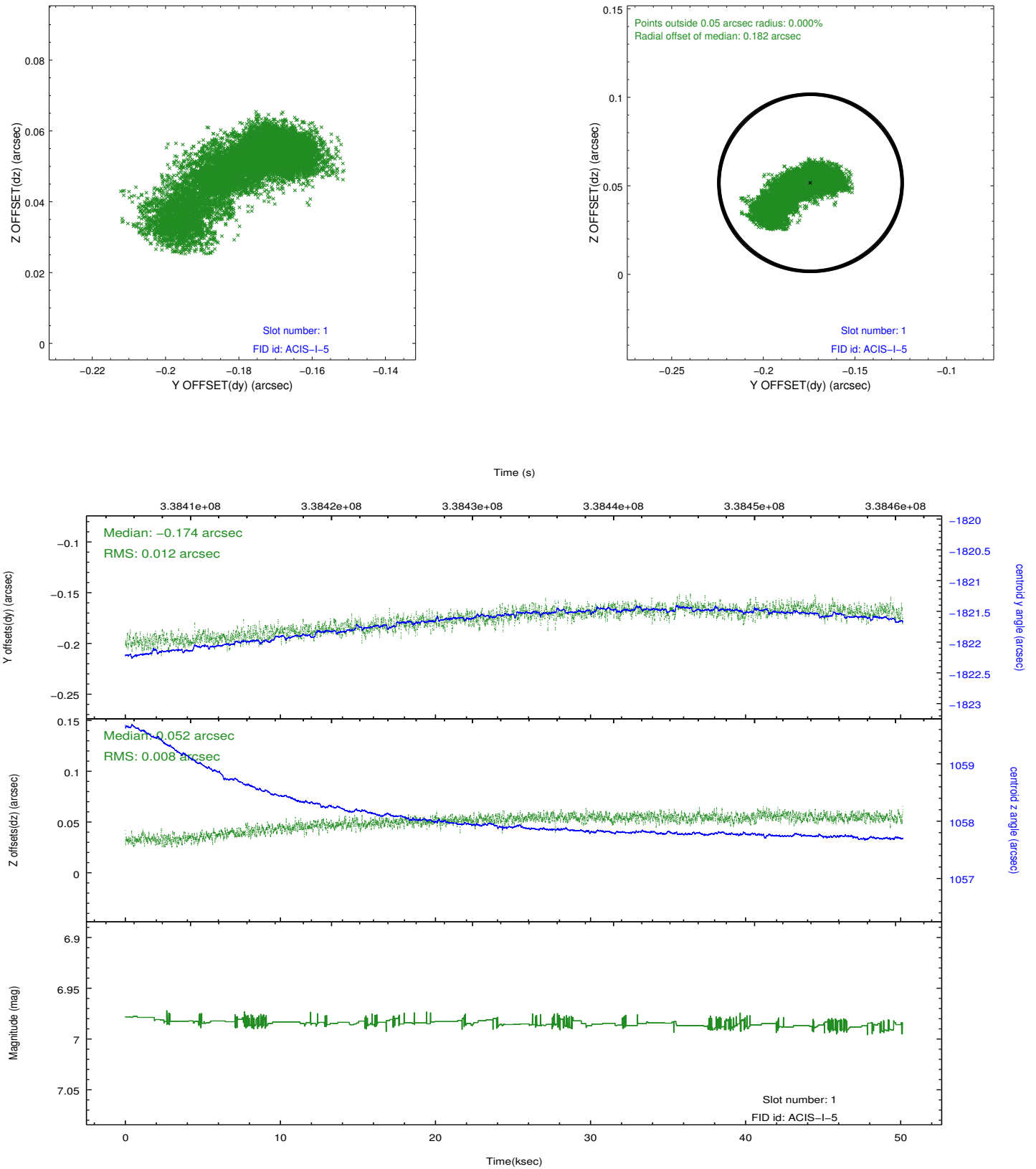


2.5 FID Slots

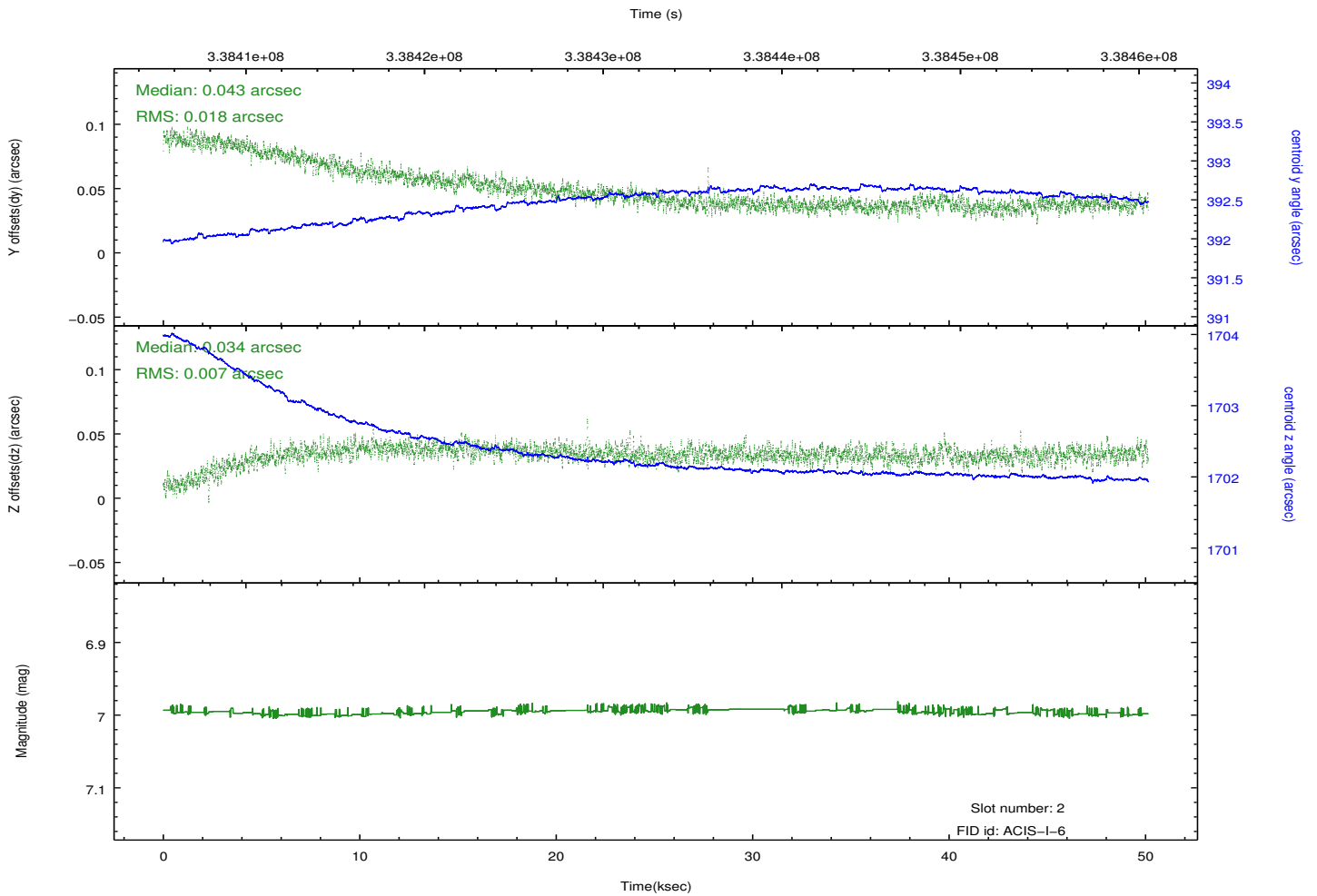
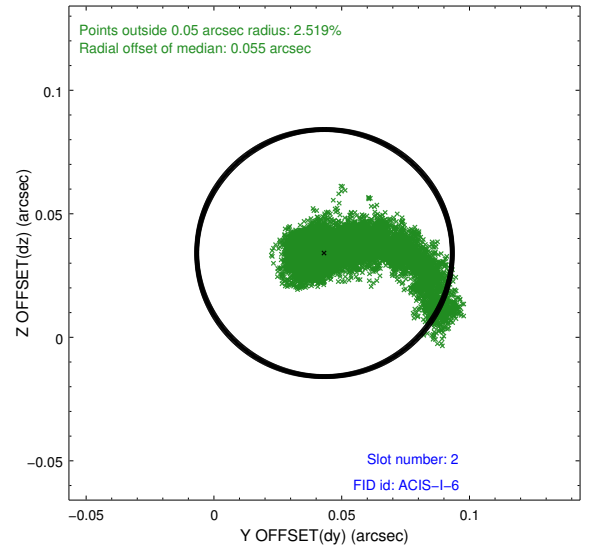
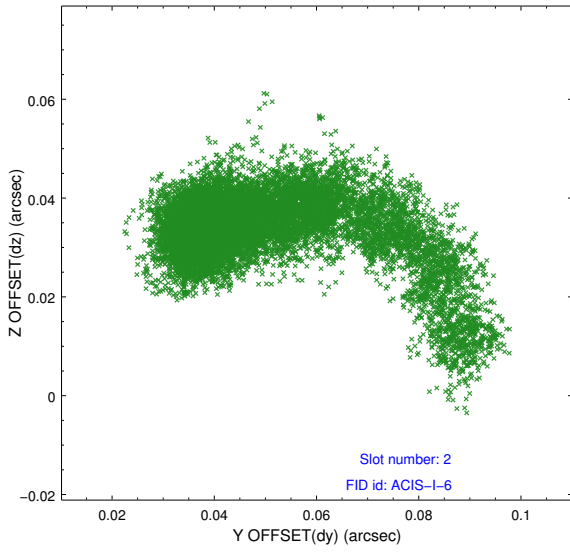
2.5.1 Slot 0



2.5.2 Slot 1



2.5.3 Slot 2



A Summary

A.1 Status

V&V Scientist	Jen Lauer
V&V Date (YYYY-MM-DD)	2012.05.30
V&V Edition	1
V&V Disposition and Status	OK
V&V Charge Time	50.1331594

A.2 Comments

Roll constraint satisfied. Joint Proposal: Spitzer.