

V&V Reference Report

L2 ASCDS Version : 8.4.4

Observation 9757 - L2 Version 2
Chandra X-Ray Center

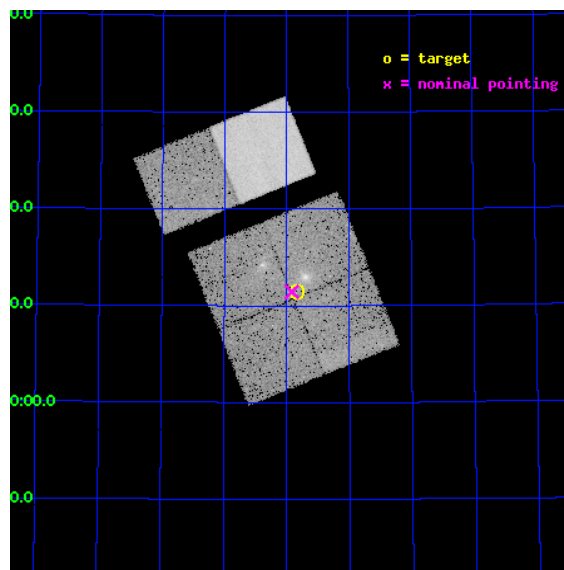
L2 Processing Date : May 4 2012

Contents

1	Front	2
2	OBI	3
2.1	OBI	3
2.1.1	Images	3
2.1.2	Bias	3
2.1.3	Parameters	4
2.1.4	Events	4
2.2	Compared Parameters	5
2.3	Aspect	6
2.4	Star Slots	9
2.4.1	Slot 3	9
2.4.2	Slot 4	10
2.4.3	Slot 5	11
2.4.4	Slot 6	12
2.4.5	Slot 7	13
2.5	FID Slots	14
2.5.1	Slot 0	14
2.5.2	Slot 1	15
2.5.3	Slot 2	16
A	Summary	17
A.1	Status	17
A.2	Comments	17

1 Front

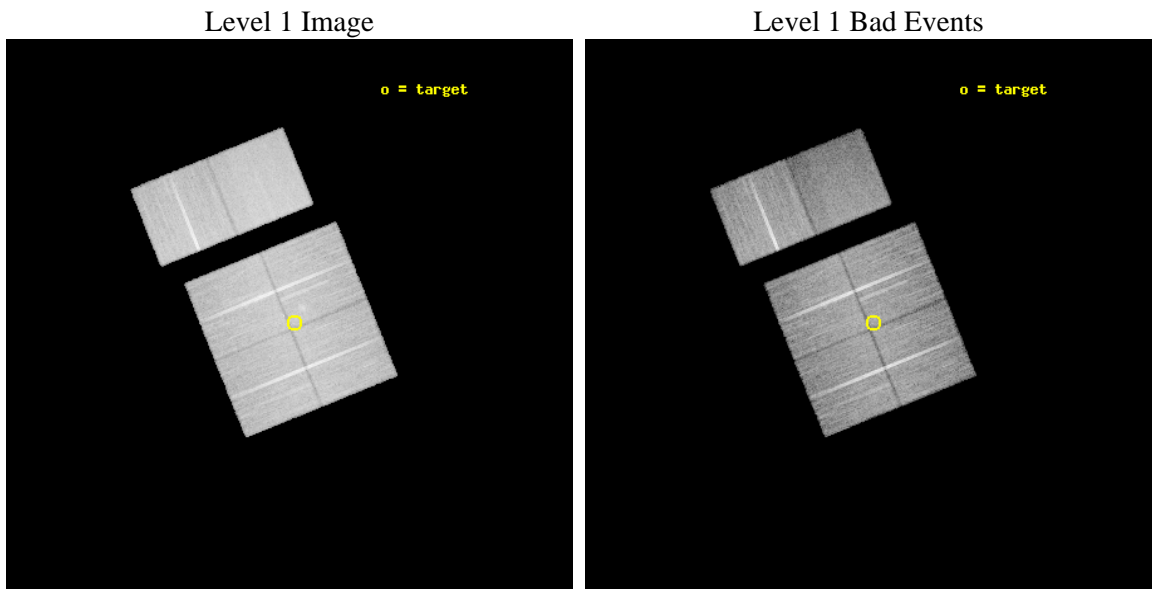
seq_num	900576	Sequence number
obs_id	9757	Observation id
title	AGN in the Cosmic Web: A Proto-Cluster at z=2.3	Proposal title
observer	Prof Kirpal Nandra	Principal investigator
object	HS 1700+643	Source name
dtcycle	0	
cycle	P	events from which exps? Prim/Second/Both
ra_targ	255.210833	Observer's specified target RA [deg]
dec_targ	64.191417	Observer's specified target Dec [deg]
ra_nom	255.2293000727	Nominal RA [deg]
dec_nom	64.190747422442	Nominal Dec [deg]
roll_nom	337.99204541161	Nominal Roll [deg]
revision	2	Processing version of data
ontime	21049.599921644	Sum of GTIs [s]
livetime	20783.057212888	Livetime [s]
ontime0	21049.599921644	Sum of GTIs [s]
ontime1	21049.599921644	Sum of GTIs [s]
ontime2	21046.358931422	Sum of GTIs [s]
ontime3	21049.599921644	Sum of GTIs [s]
ontime6	21049.599921644	Sum of GTIs [s]
ontime7	21049.599921644	Sum of GTIs [s]
l2events	157572	Number of level 2 events



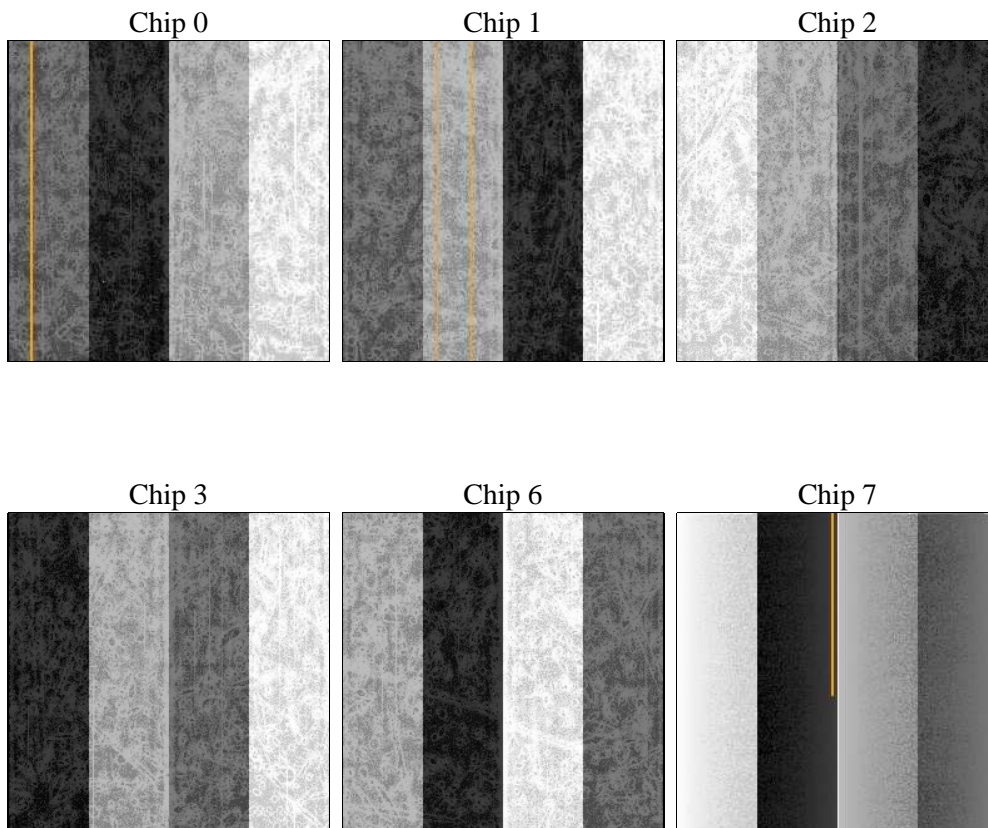
2 OBI

2.1 OBI

2.1.1 Images



2.1.2 Bias



2.1.3 Parameters

obi_num	0	Obi number	sched_exp_time	21010.024000	[s] Scheduled observation exposure time
ascdsver	8.4.4	Processing system revision	ontime	21049.599921644	Sum of GTIs [s]
caldbver	4.4.9	 	ontime0	21049.599921644	Sum of GTIs [s]
date	2012-05-04T14:07:43	Date and time of file creation	ontime1	21049.599921644	Sum of GTIs [s]
revision	2	Processing version of data	ontime2	21046.358931422	Sum of GTIs [s]
			ontime3	21049.599921644	Sum of GTIs [s]
			ontime6	21049.599921644	Sum of GTIs [s]
			ontime7	21049.599921644	Sum of GTIs [s]
			l1events	1016278	Number of level 1 events

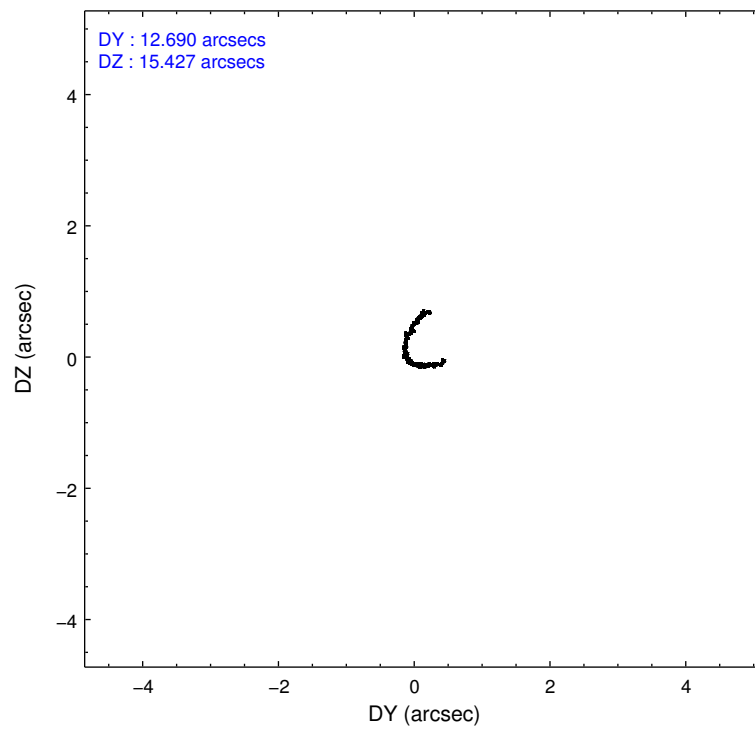
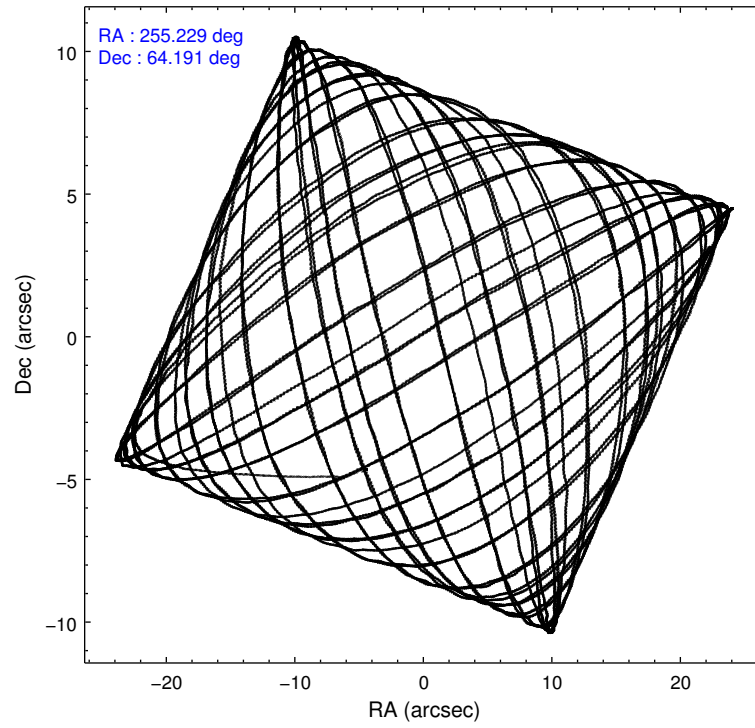
2.1.4 Events

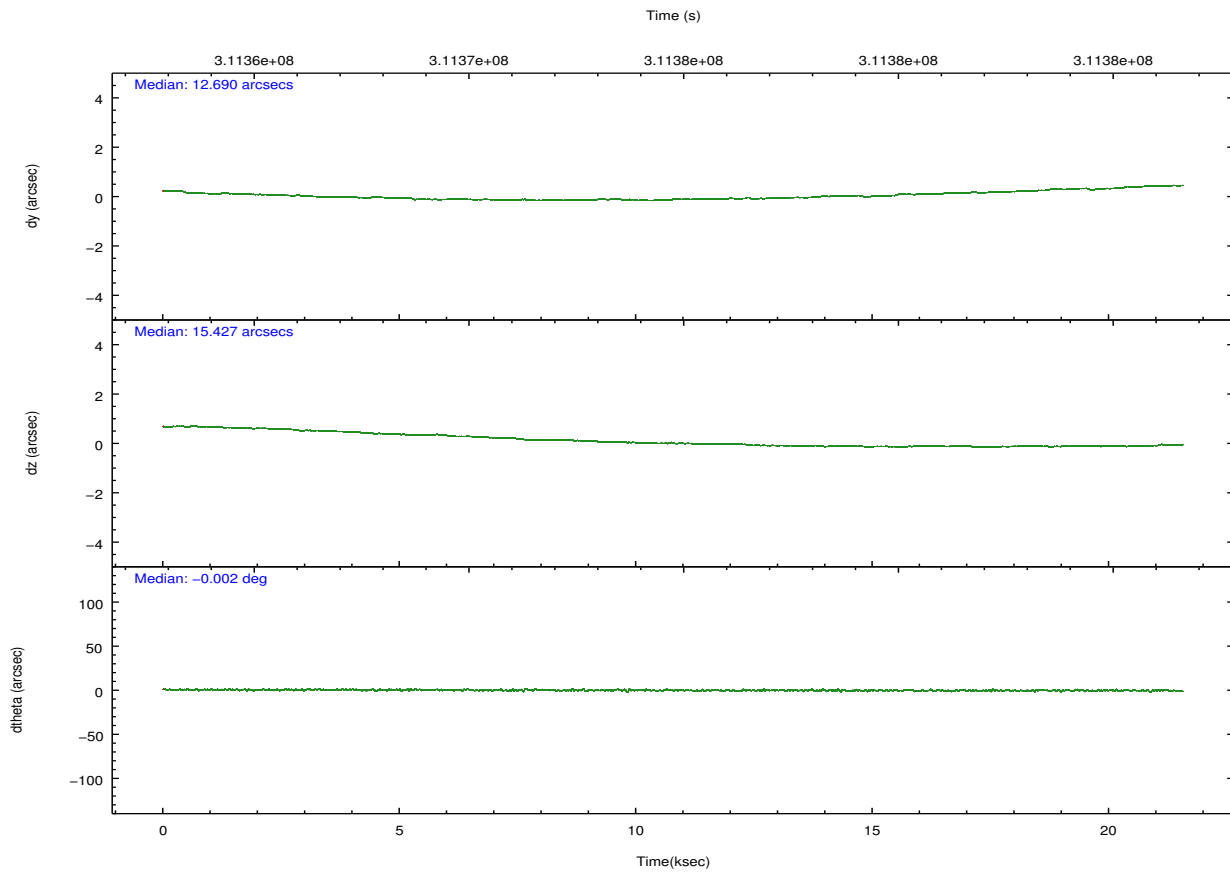
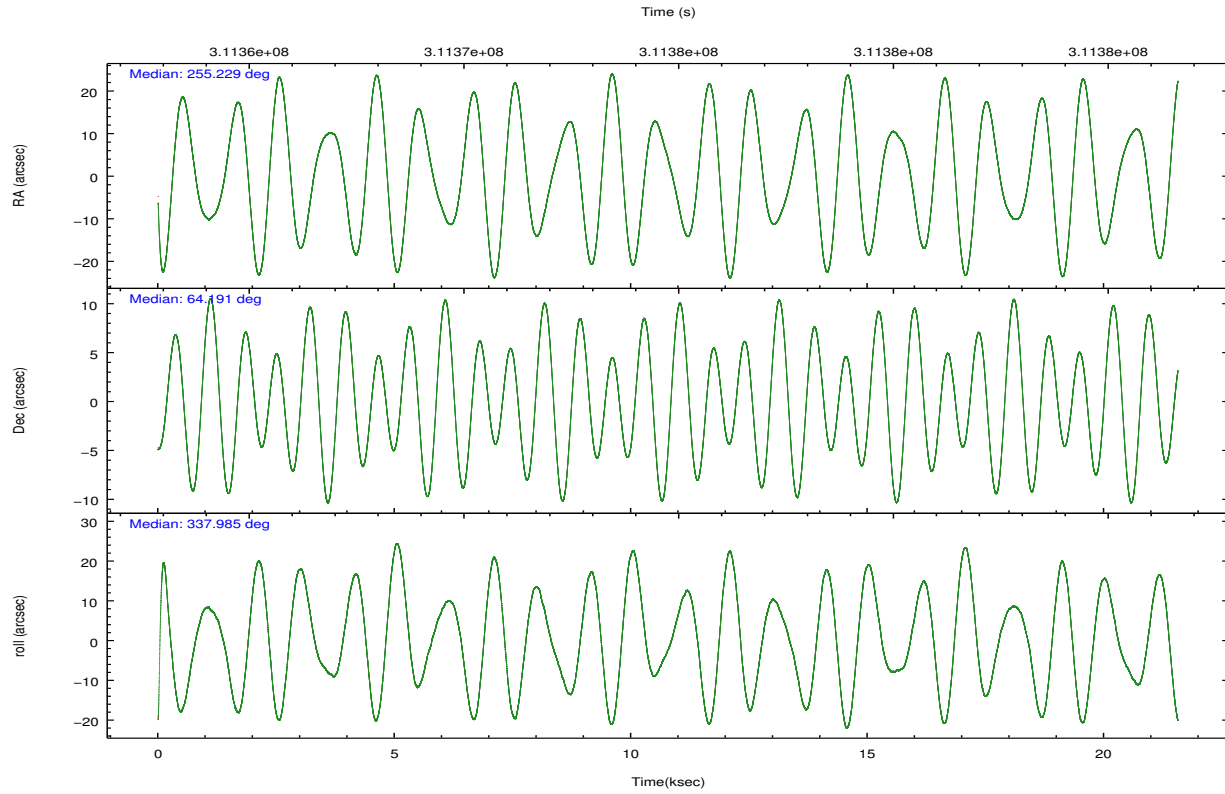
	ccd 0	ccd 1	ccd 2	ccd 3	ccd 6	ccd 7		ccd 0	ccd 1	ccd 2	ccd 3	ccd 6	ccd 7
level 1 events	158285	157113	172343	165129	174818	188590	grade 0 events	5932	6764	7386	7111	6267	8152
rejected events	141770	138534	154487	147450	157079	102231		3%	4%	4%	4%	3%	4%
rejected %	89%	88%	89%	89%	89%	54%	grade 1 events	99	82	107	97	93	260
								0%	0%	0%	0%	0%	0%
							grade 2 events	3996	4227	3948	3786	3926	17379
								2%	2%	2%	2%	2%	9%
							grade 3 events	1833	1959	1793	1782	1895	7788
								1%	1%	1%	1%	1%	4%
							grade 4 events	1647	1980	1786	1816	1859	7597
								1%	1%	1%	1%	1%	4%
							grade 5 events	5752	6456	5313	6668	6957	19419
								3%	4%	3%	4%	3%	10%
							grade 6 events	3113	3652	2944	3187	3793	45473
								1%	2%	1%	1%	2%	24%
							grade 7 events	135913	131993	149066	140682	150028	82522
								85%	84%	86%	85%	85%	43%

2.2 Compared Parameters

Parameter	Planned	Actual	Parameter	Planned	Actual
Instrument	ACIS	ACIS	Obspar format version number	7	7
Detector	ACIS-012367	ACIS-012367	Obspar file type	PREDICTED	ACTUAL
Grating	NONE	NONE	Obspar update status	NONE	UPDATED
Data mode	VFAINT	VFAINT	CCD I0 on	Y	Y
Observation mode	POINTING	POINTING	CCD I1 on	Y	Y
[deg] Pointing RA	255.166840	255.2293000727025	CCD I2 on	Y	Y
[deg] Pointing Dec	64.186820	64.19074742244217	CCD I3 on	Y	Y
[deg] Pointing Roll	337.839603	337.9920454116052	CCD S0 on	N	N
[mm] SIM focus pos	-0.782348	-0.7809083437167272	CCD S1 on	N	N
[mm] SIM defocus	0	0.001439871863259334	CCD S2 on	Y	Y
[mm] SIM translation stage pos	-233.592463	-233.5874344608287	CCD S3 on	O1	Y
[mm] SIM translation stage offset	0	-0.005018542100998502	CCD S4 on	N	N
[s] Observation start time (MET)	311364531.184000	311363340.27633	CCD S5 on	N	N
Observation start date	2007-11-13T18:07:46	2007-11-13T17:49:00	Number of optional ACIS chips dropped	0	0
[s] Observation end time (MET)	311385541.184000	311385774.96491	On-chip summing requested	N	N
Observation end date	2007-11-13T23:57:56	2007-11-14T00:02:54	Subarray requested	NONE	NONE
Read mode	TIMED	TIMED	Alternating exposures requested	N	N
			[s] Primary exposure time	0.000000	3.2

2.3 Aspect



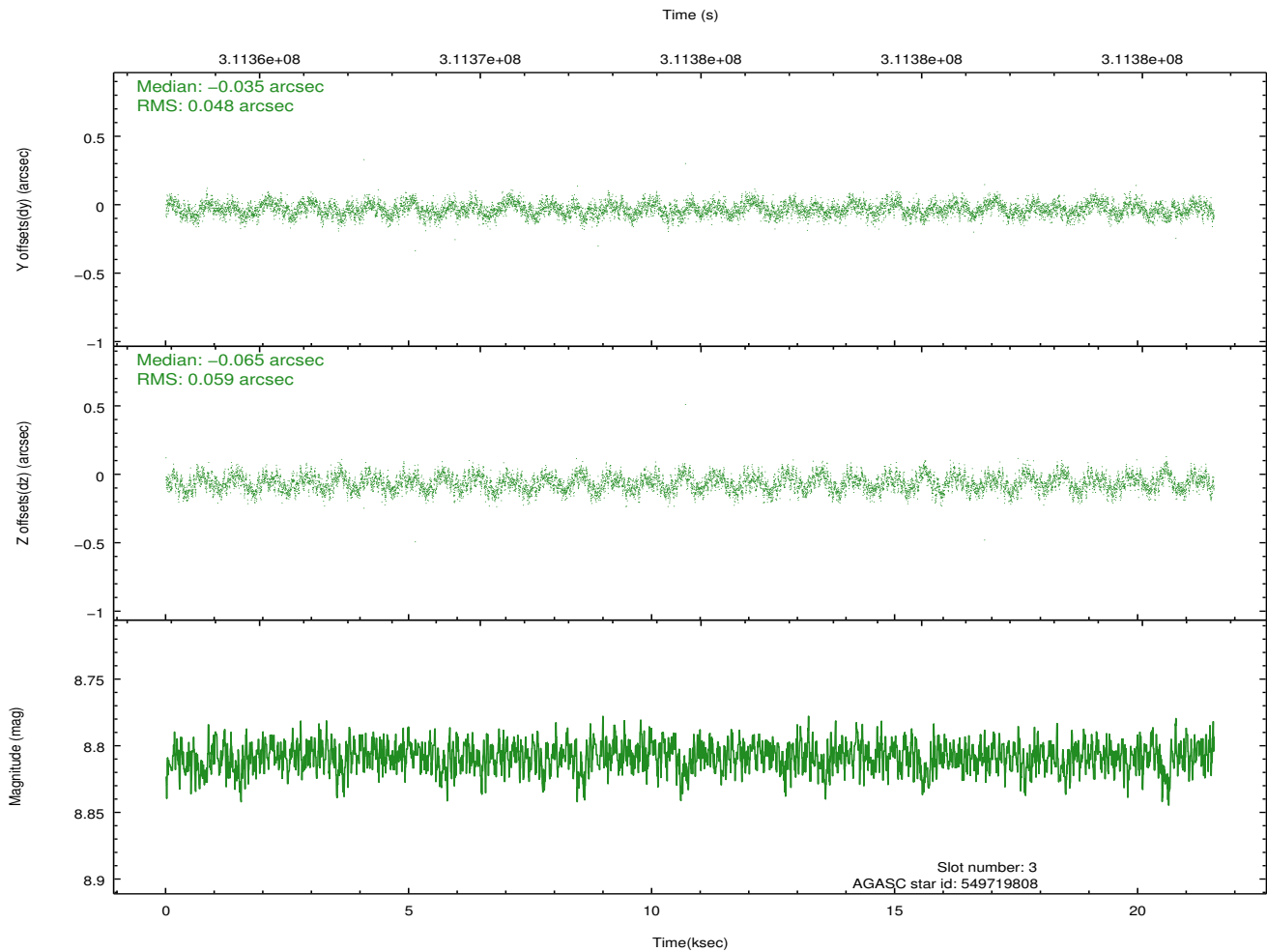
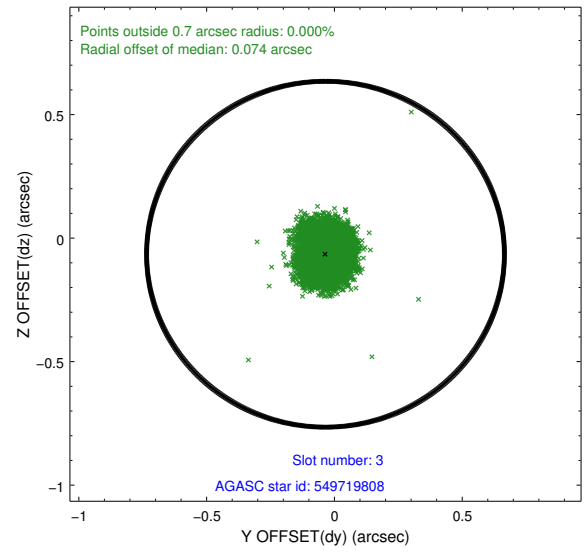
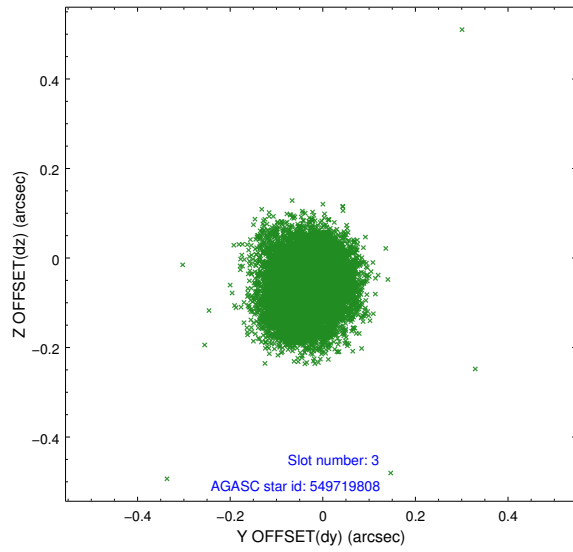


Slot Statistics

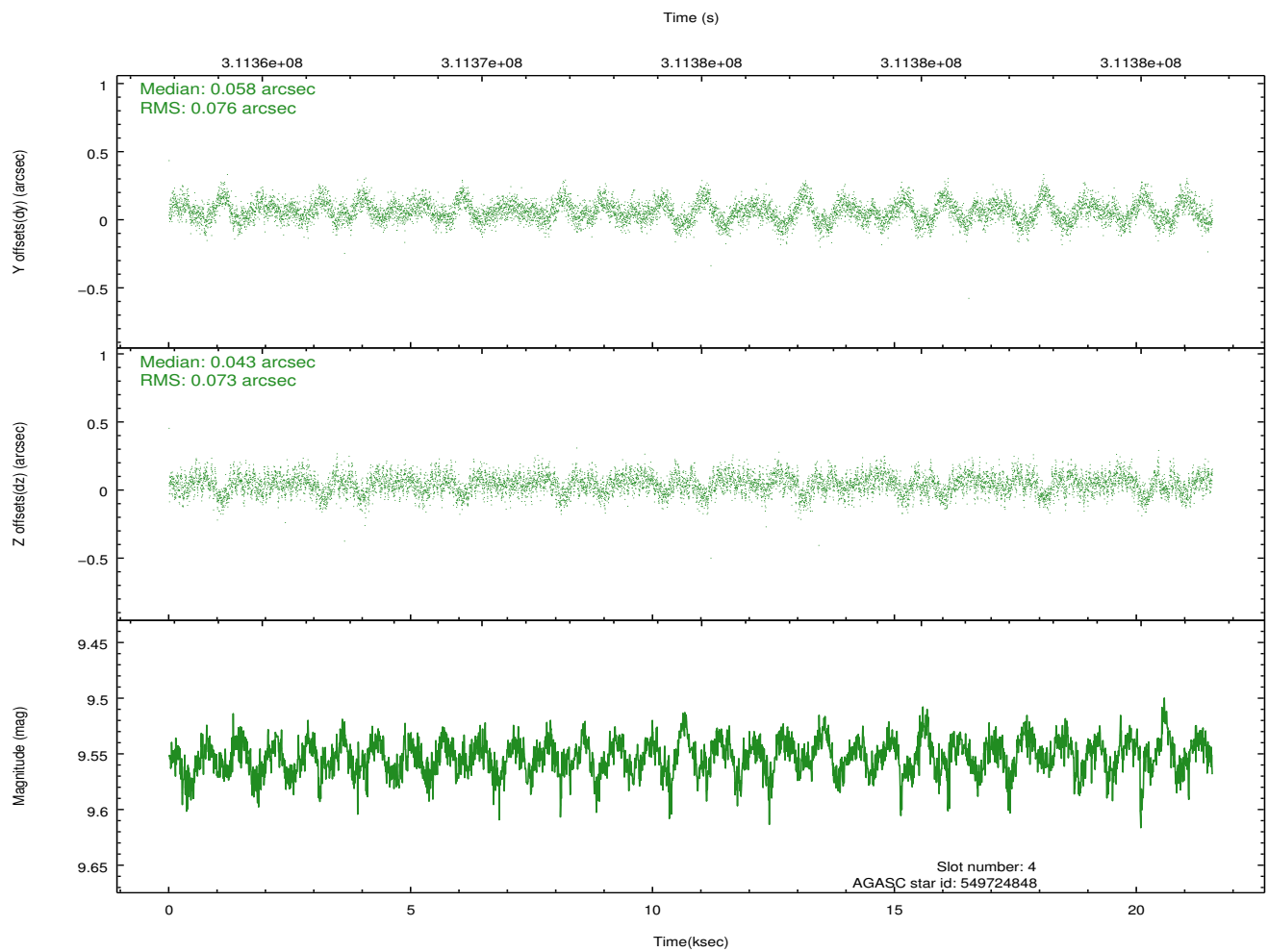
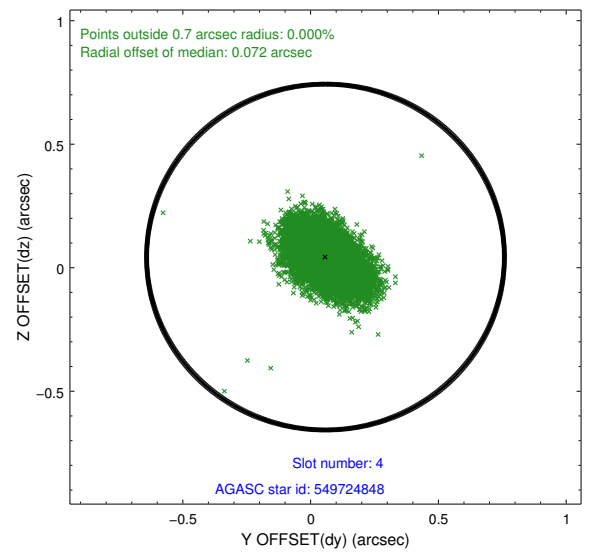
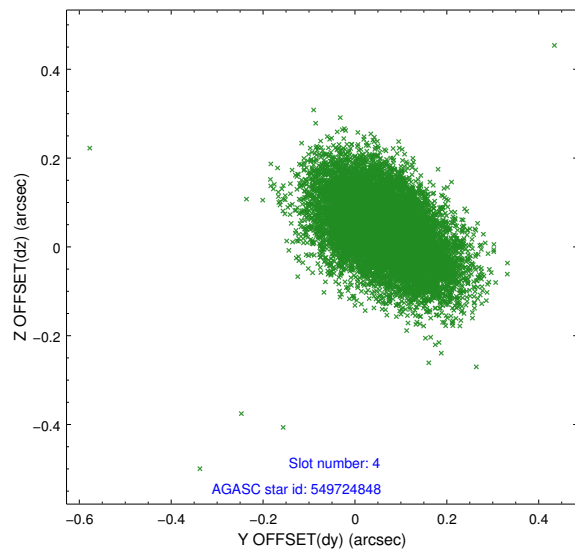
slot	status	id	mag	n_pts	med_dy	med_dz	dr1	dr2	ra	dec	mean_y	mean_z
0	FID	ACIS-I-1	7.23	5258	-0.012	-0.029	0.019	0.044	0.000000	0.000000	926.77	-839.21
1	FID	ACIS-I-4	7.16	5259	0.159	0.050	0.015	0.030	0.000000	0.000000	2147.09	1060.59
2	FID	ACIS-I-5	7.22	5260	-0.245	0.050	0.012	0.020	0.000000	0.000000	-1821.24	1058.66
3	GUIDE	549719808	8.81	10516	-0.035	-0.065	0.082	0.126	255.292775	64.694097	-509.19	1764.79
4	GUIDE	549724848	9.55	10510	0.058	0.043	0.111	0.186	255.389284	63.950133	647.47	-655.29
5	GUIDE	549726784	8.97	10511	0.001	0.031	0.104	0.171	255.680869	64.026795	967.23	-224.40
6	GUIDE	549726944	8.19	10515	-0.039	-0.200	0.088	0.146	254.598381	64.304516	-983.21	61.46
7	GUIDE	549728568	9.33	10513	0.006	0.207	0.093	0.150	253.813006	64.122814	-1890.95	-994.47

2.4 Star Slots

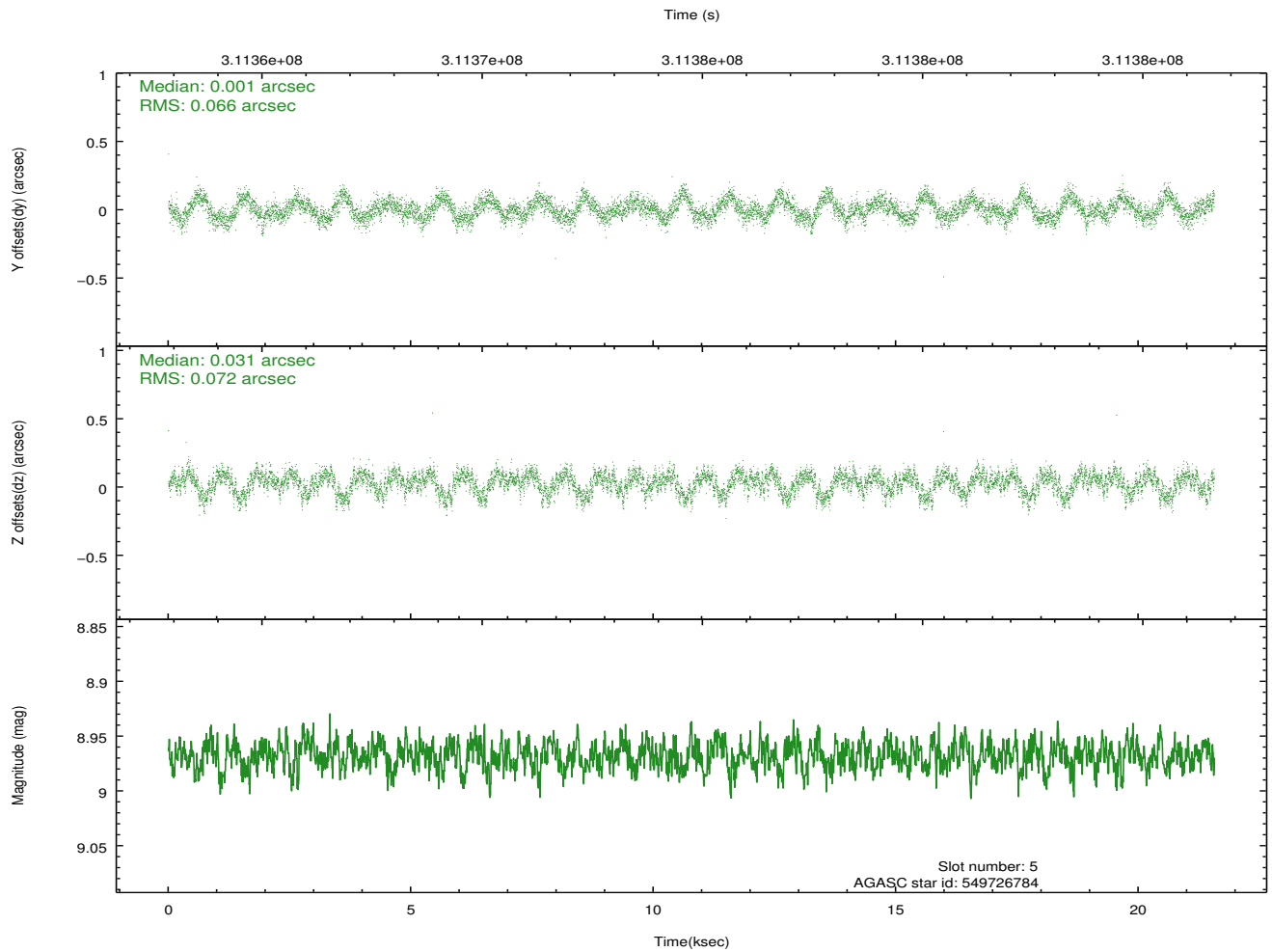
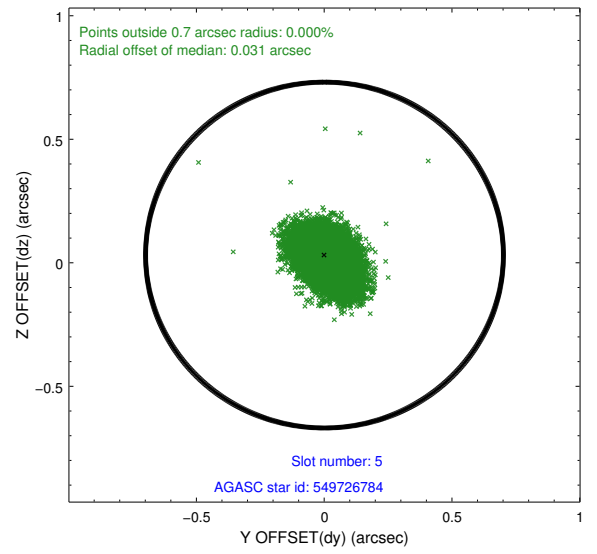
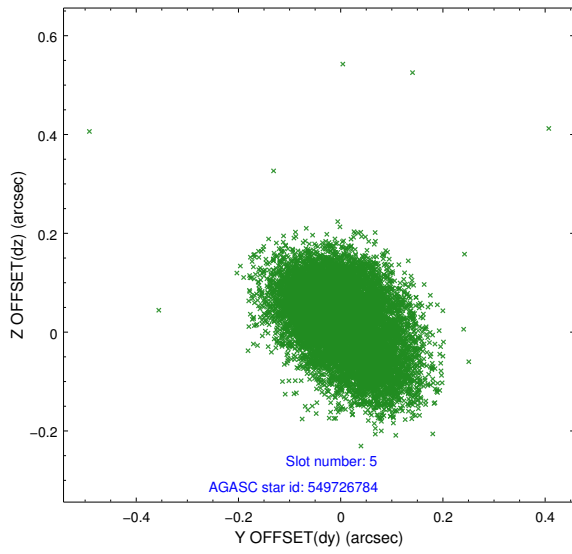
2.4.1 Slot 3



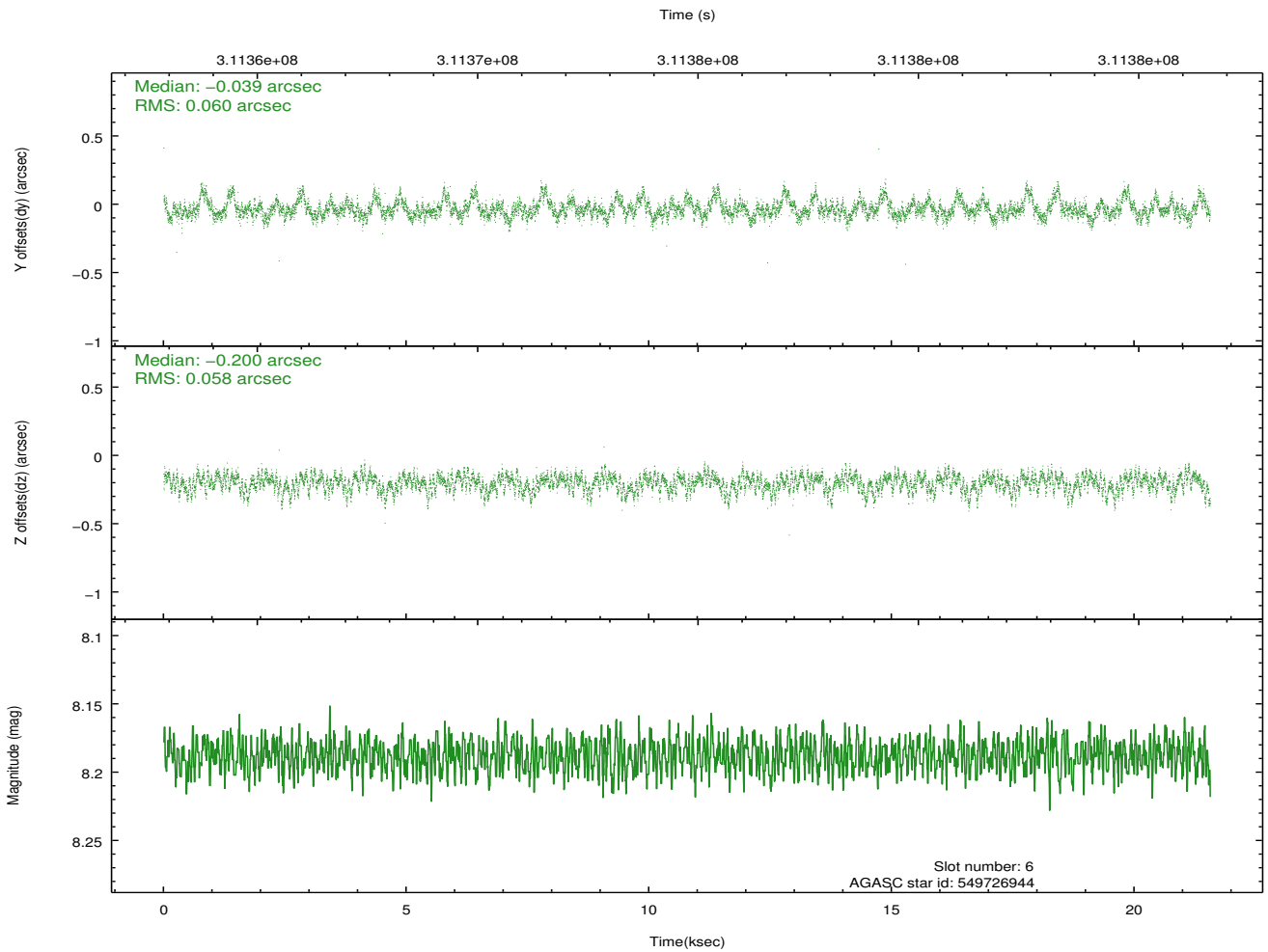
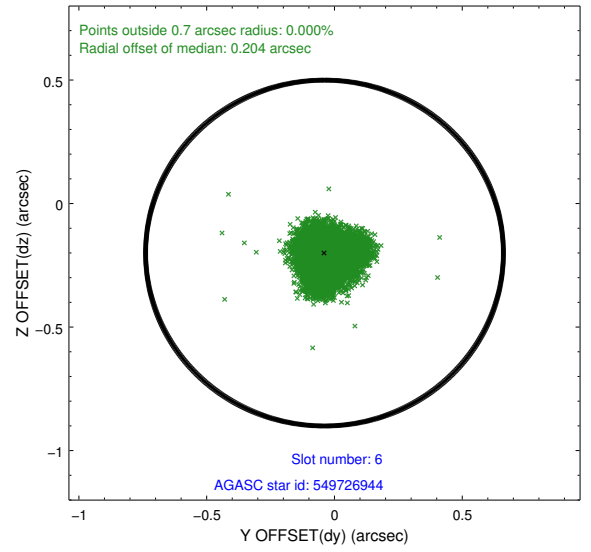
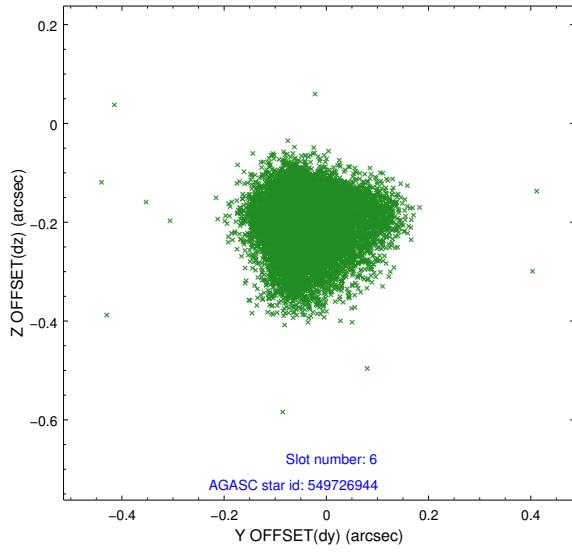
2.4.2 Slot 4



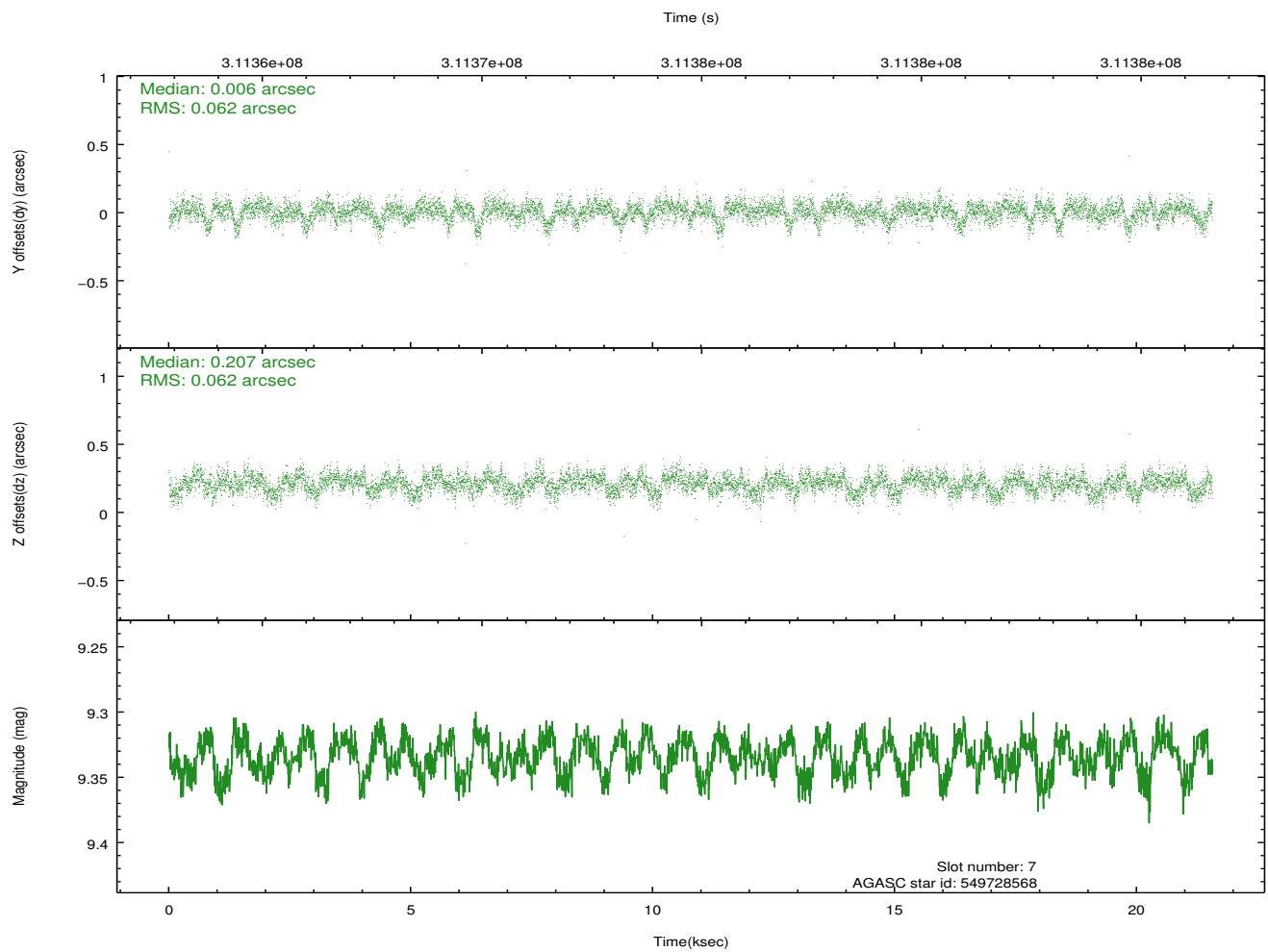
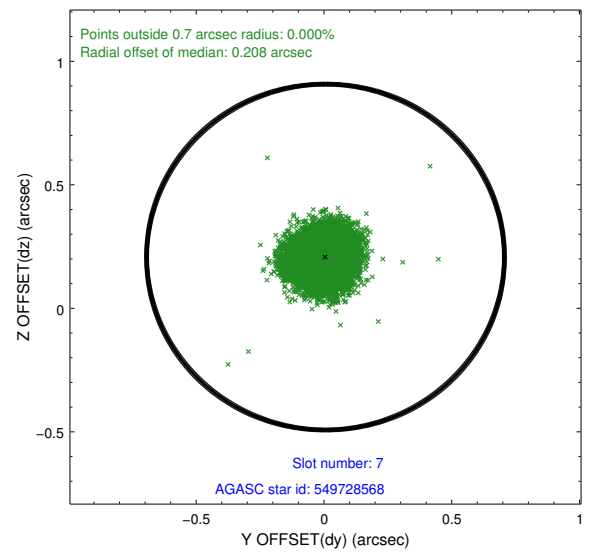
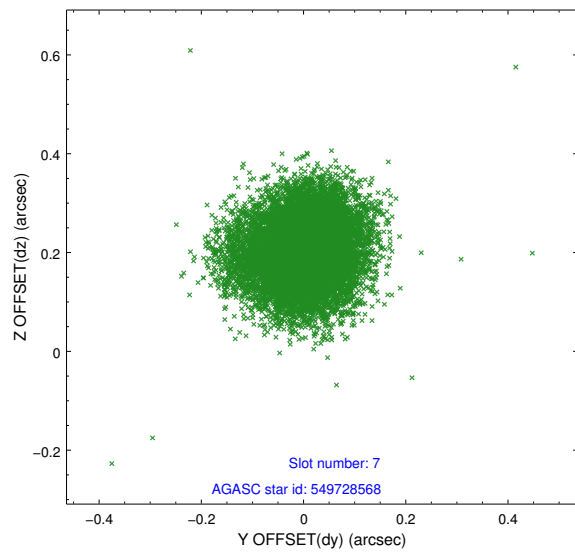
2.4.3 Slot 5



2.4.4 Slot 6

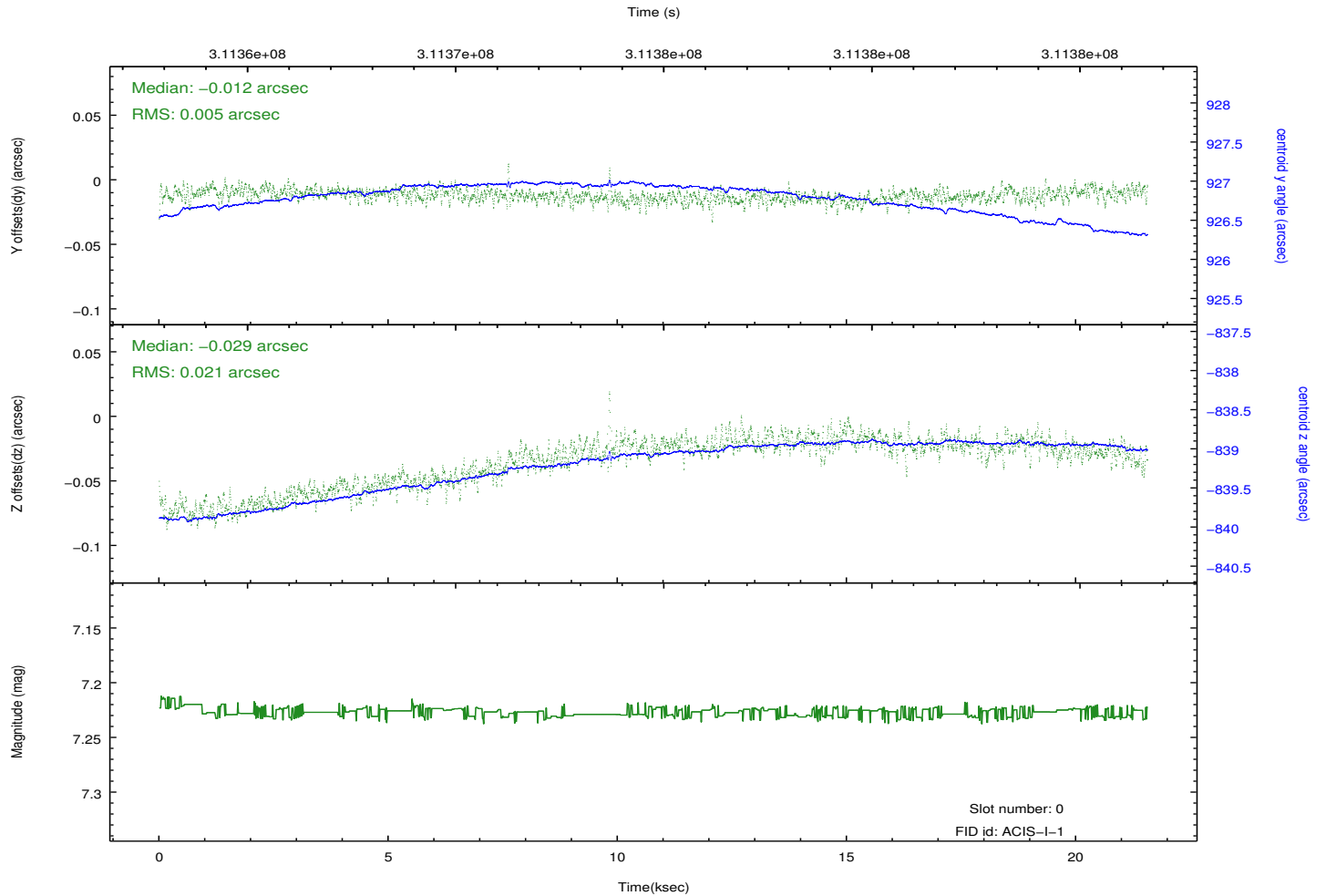
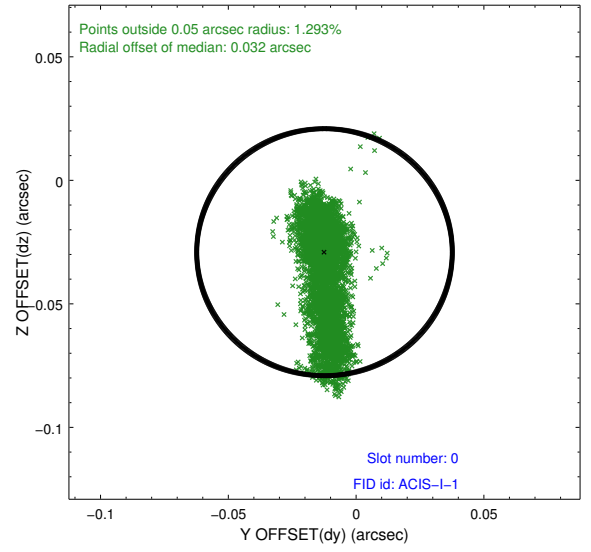
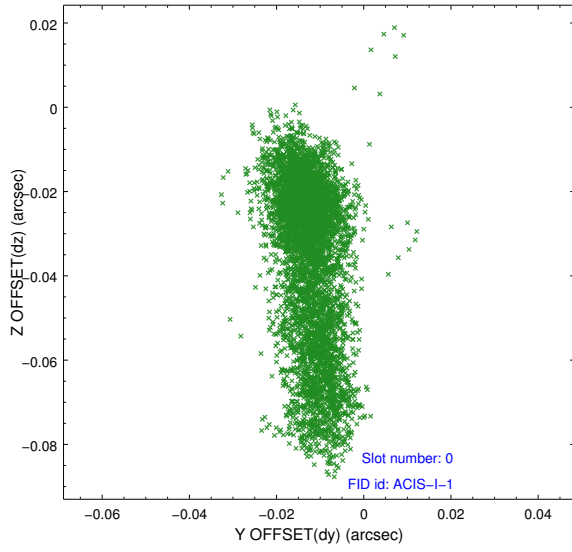


2.4.5 Slot 7

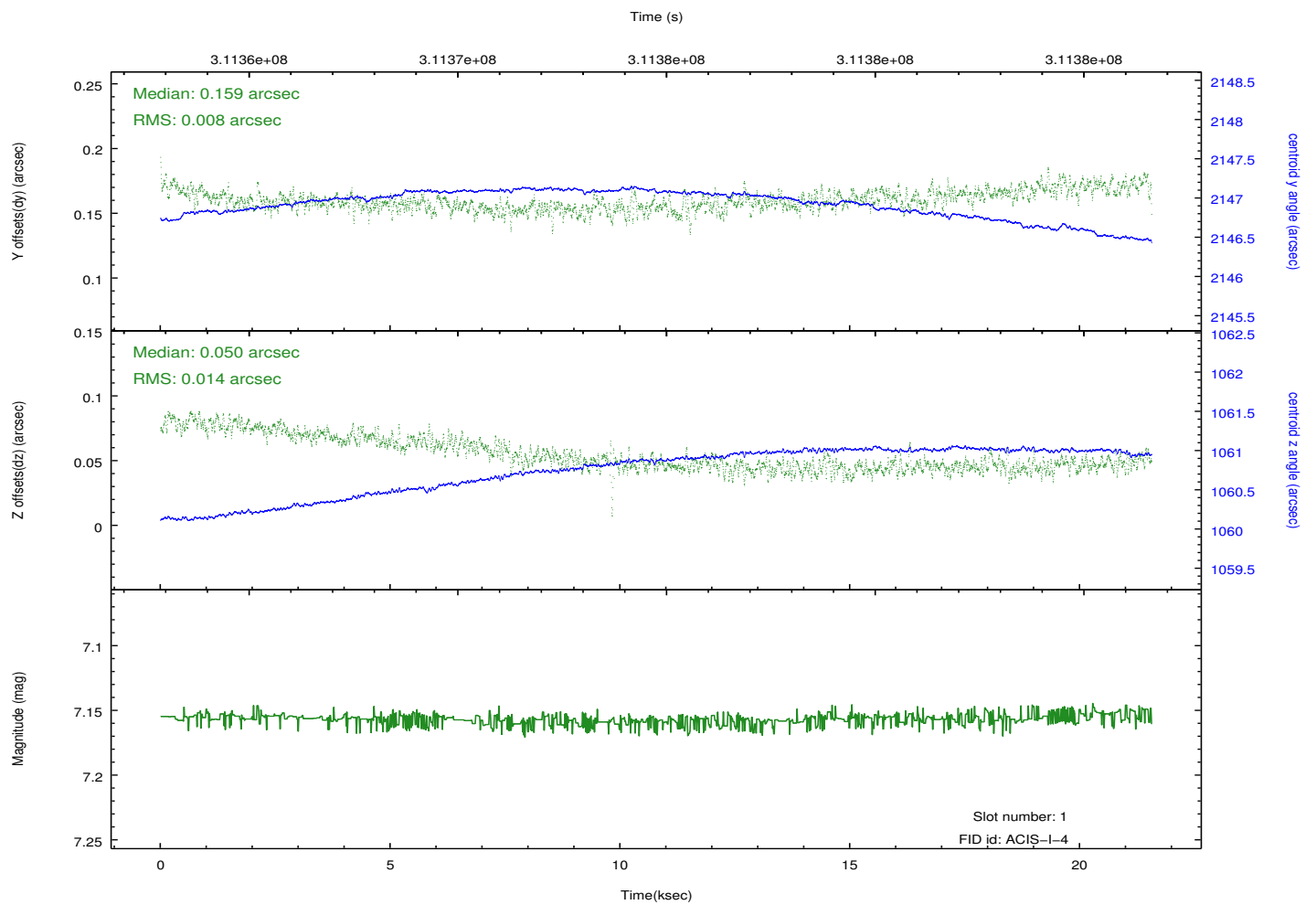
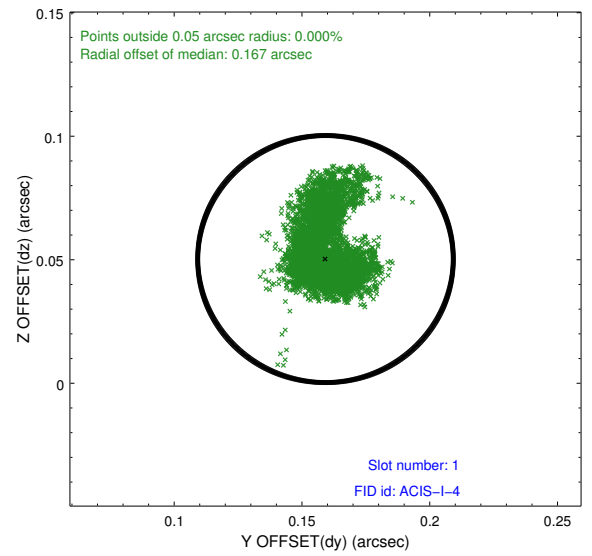
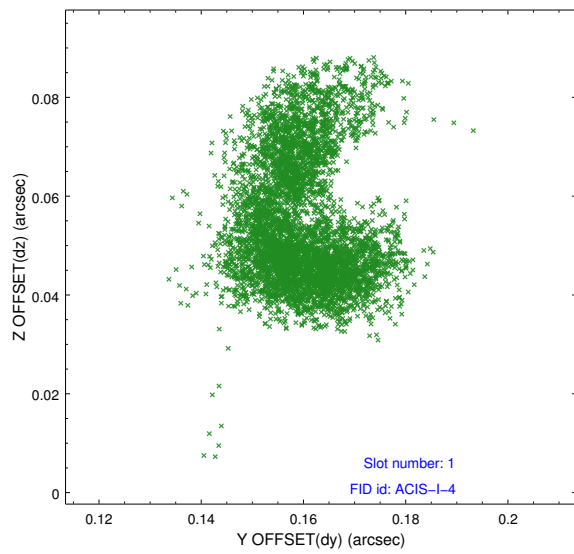


2.5 FID Slots

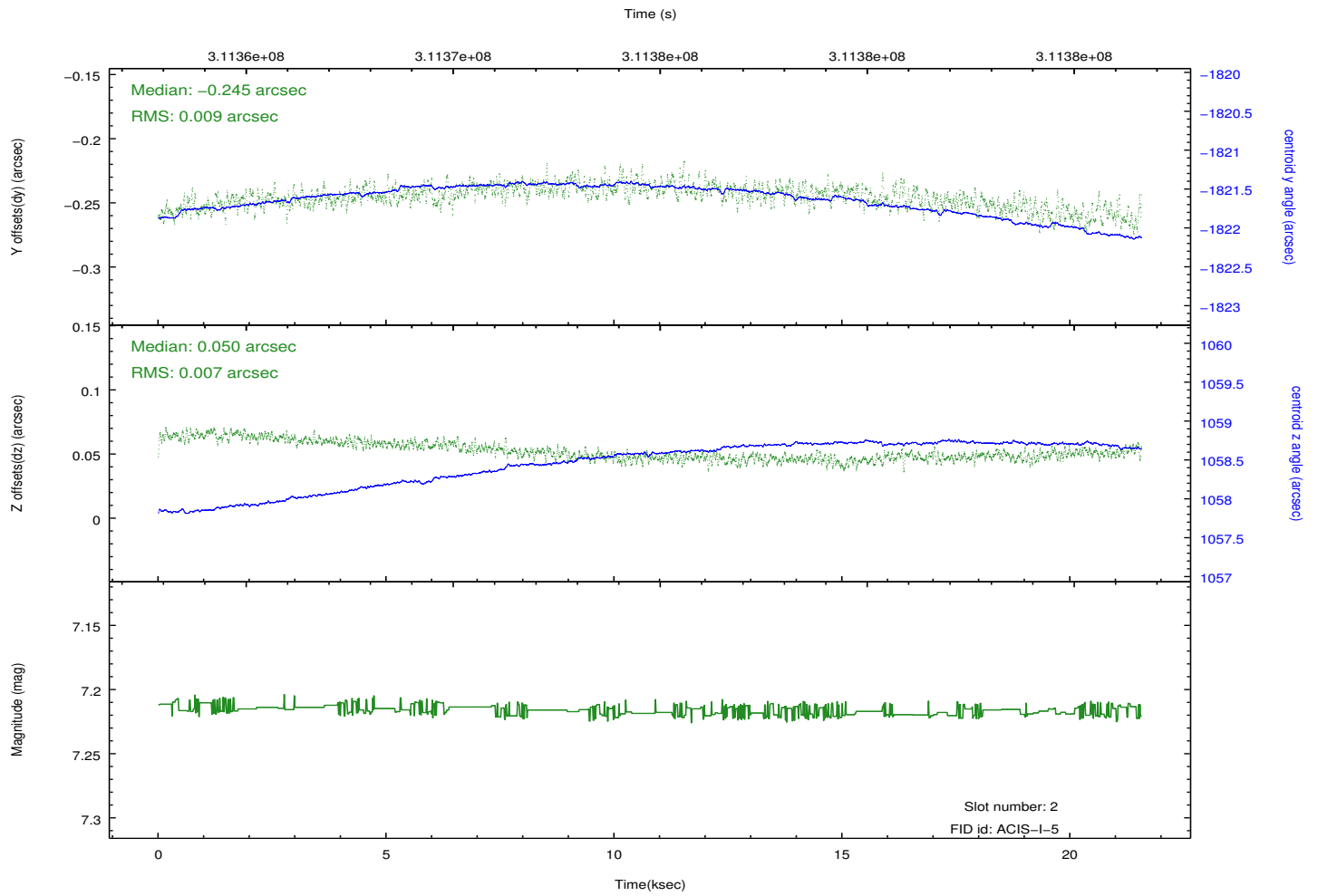
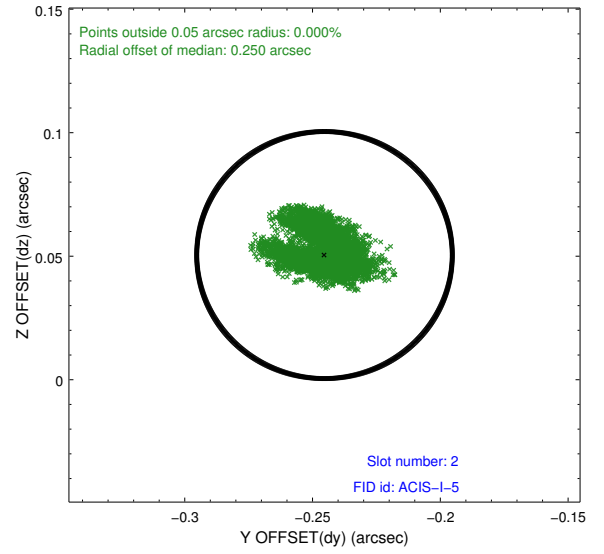
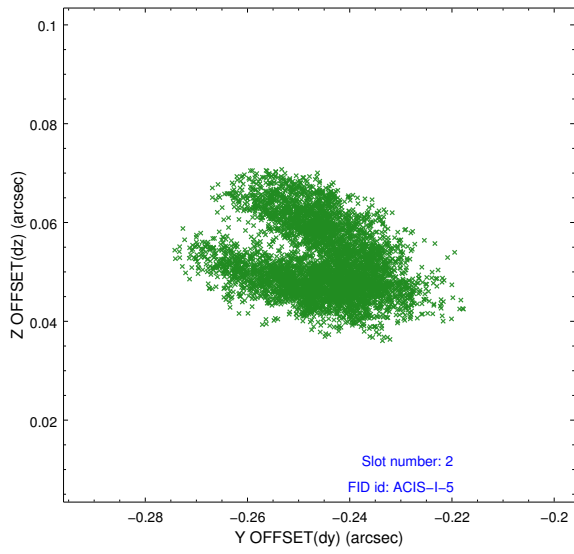
2.5.1 Slot 0



2.5.2 Slot 1



2.5.3 Slot 2



A Summary

A.1 Status

V&V Scientist	Jen Lauer
V&V Date (YYYY-MM-DD)	2012.05.07
V&V Edition	1
V&V Disposition and Status	OK
V&V Charge Time	21.0495999

A.2 Comments

Roll preference met.