

V&V Reference Report

L2 ASCDS Version : 8.4.4

Observation 9917 - L2 Version 2
Chandra X-Ray Center

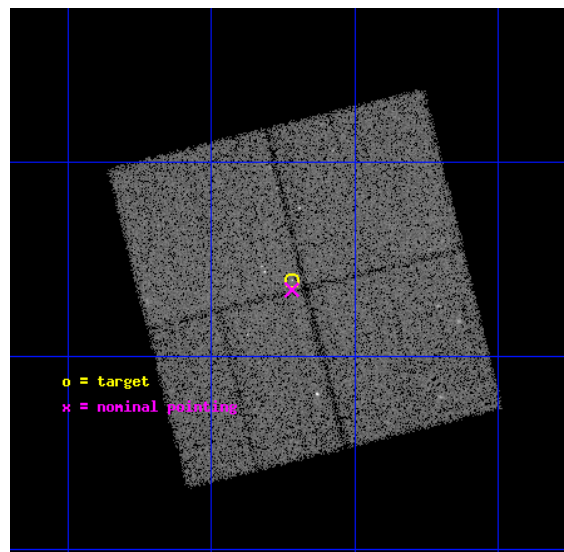
L2 Processing Date : Jun 4 2012

Contents

1	Front	2
2	OBI	3
2.1	OBI	3
2.1.1	Images	3
2.1.2	Bias	3
2.1.3	Parameters	4
2.1.4	Events	4
2.2	Compared Parameters	5
2.3	Aspect	6
2.4	Star Slots	9
2.4.1	Slot 3	9
2.4.2	Slot 4	10
2.4.3	Slot 5	11
2.4.4	Slot 6	12
2.4.5	Slot 7	13
2.5	FID Slots	14
2.5.1	Slot 0	14
2.5.2	Slot 1	15
2.5.3	Slot 2	16
A	Summary	17
A.1	Status	17
A.2	Comments	17

1 Front

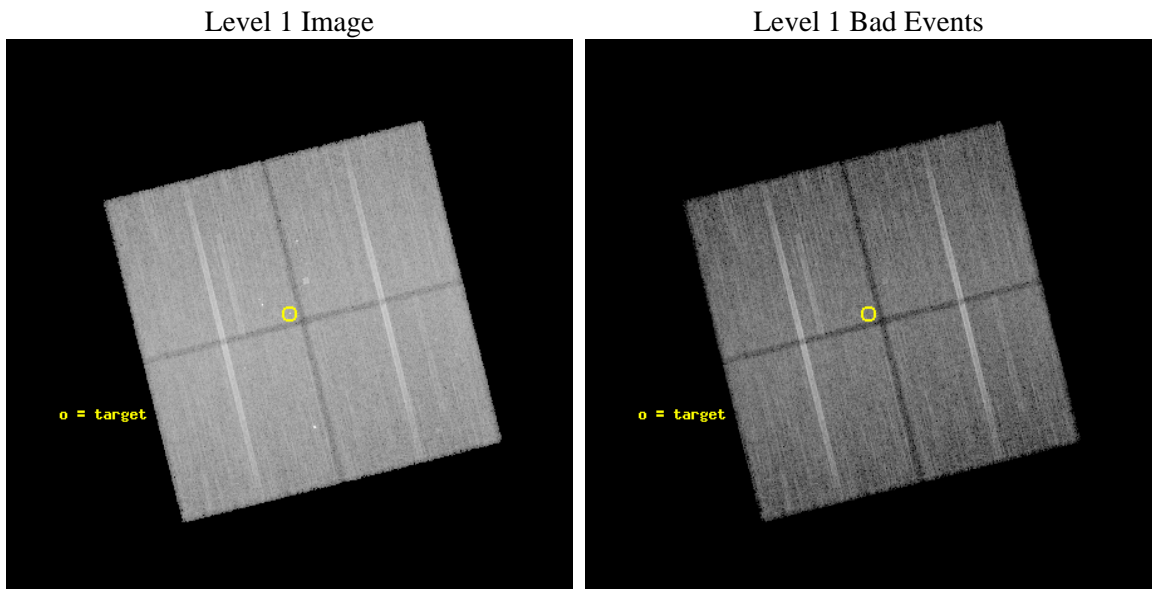
seq_num	200533	Sequence number
obs_id	9917	Observation id
title	ToO Studies with CXO of Pre-Main Sequence Stars Undergoing Optical Outbursts	Proposal title
observer	Professor David Weintraub	Principal investigator
object	V1647 Ori	Source name
dtcycle	0	
cycle	P	events from which exps? Prim/Second/Both
ra_targ	86.554583	Observer's specified target RA [deg]
dec_targ	-0.101333	Observer's specified target Dec [deg]
ra_nom	86.55503251015	Nominal RA [deg]
dec_nom	-0.1094074817707	Nominal Dec [deg]
roll_nom	255.9937431429	Nominal Roll [deg]
revision	2	Processing version of data
ontime	30178.459271848	Sum of GTIs [s]
livetime	29784.155484403	Livetime [s]
ontime0	30181.600232124	Sum of GTIs [s]
ontime1	30181.600232124	Sum of GTIs [s]
ontime2	30181.600232124	Sum of GTIs [s]
ontime3	30178.459271848	Sum of GTIs [s]
l2events	137015	Number of level 2 events



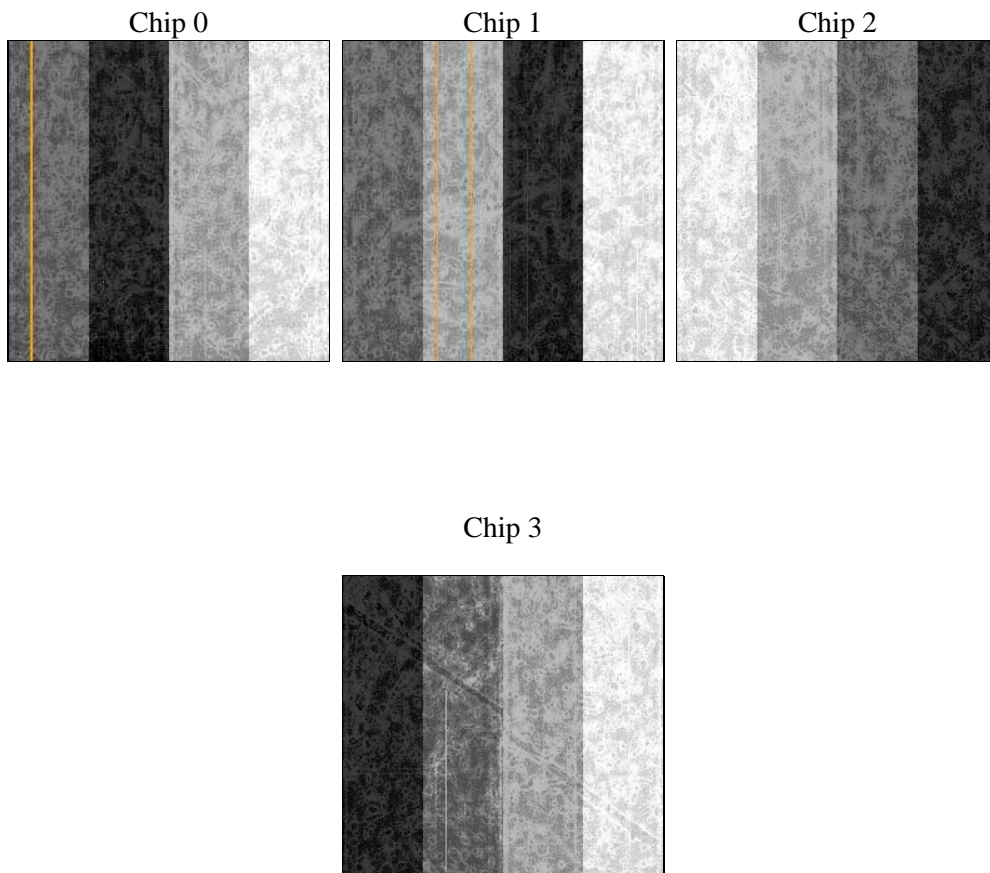
2 OBI

2.1 OBI

2.1.1 Images



2.1.2 Bias



2.1.3 Parameters

obi_num	0	Obi number	sched_exp_time	30000.000000	[s] Scheduled observation exposure time
ascdsver	8.4.4	Processing system revision	ontime	30178.459271848	Sum of GTIs [s]
caldbver	4.4.9	 	ontime0	30181.600232124	Sum of GTIs [s]
date	2012-06-04T16:52:27	Date and time of file creation	ontime1	30181.600232124	Sum of GTIs [s]
revision	2	Processing version of data	ontime2	30181.600232124	Sum of GTIs [s]
			ontime3	30178.459271848	Sum of GTIs [s]
			l1events	1210199	Number of level 1 events

2.1.4 Events

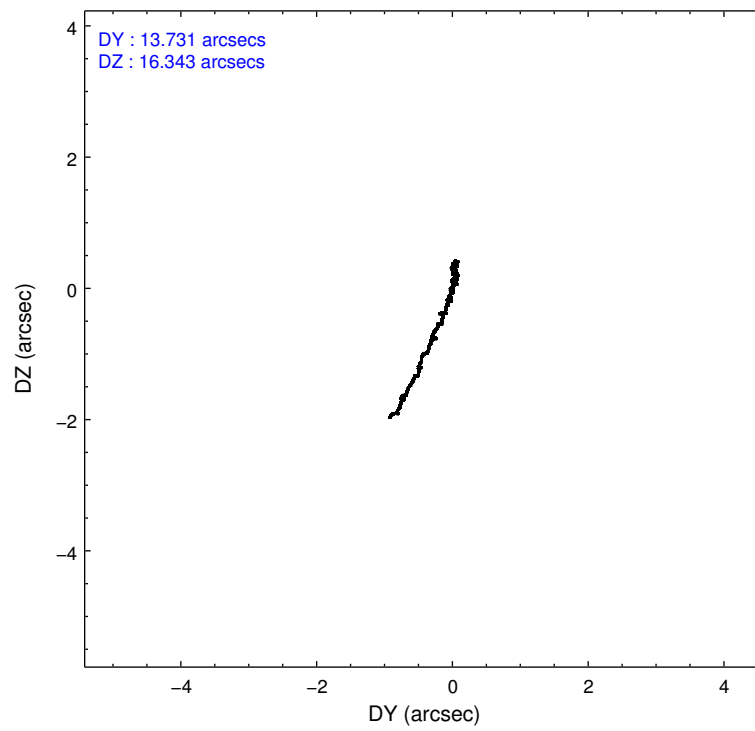
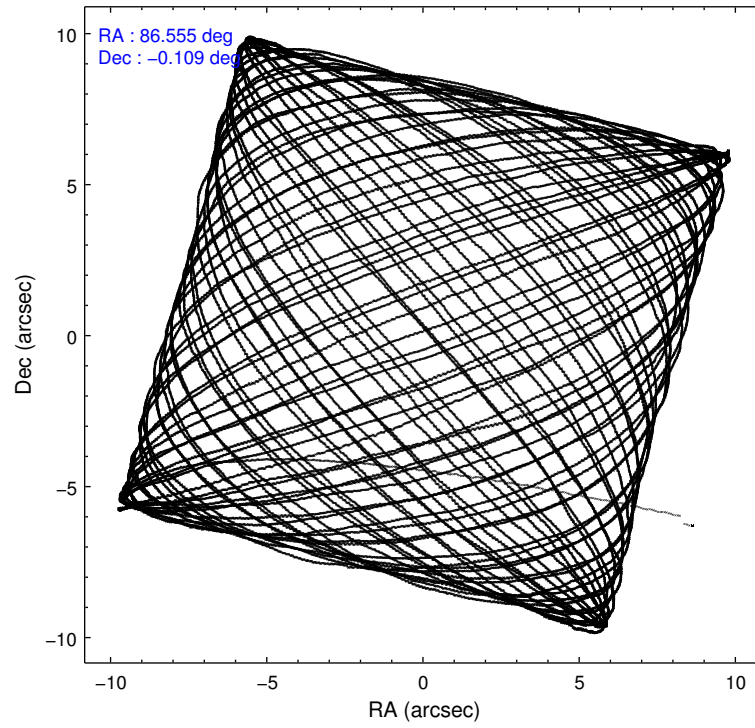
	ccd 0	ccd 1	ccd 2	ccd 3
level 1 events	287560	297689	312416	312534
rejected events	247503	255450	273113	273827
rejected %	86%	85%	87%	87%

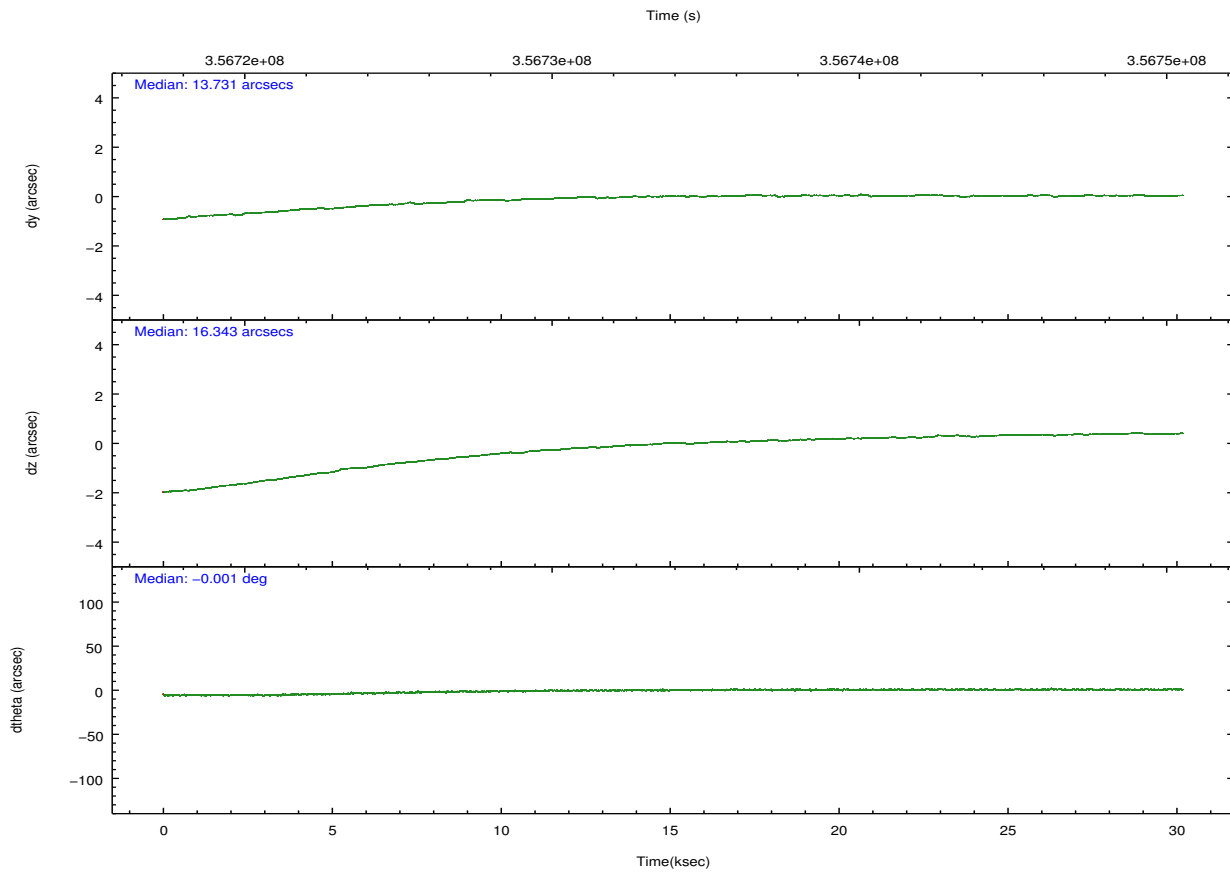
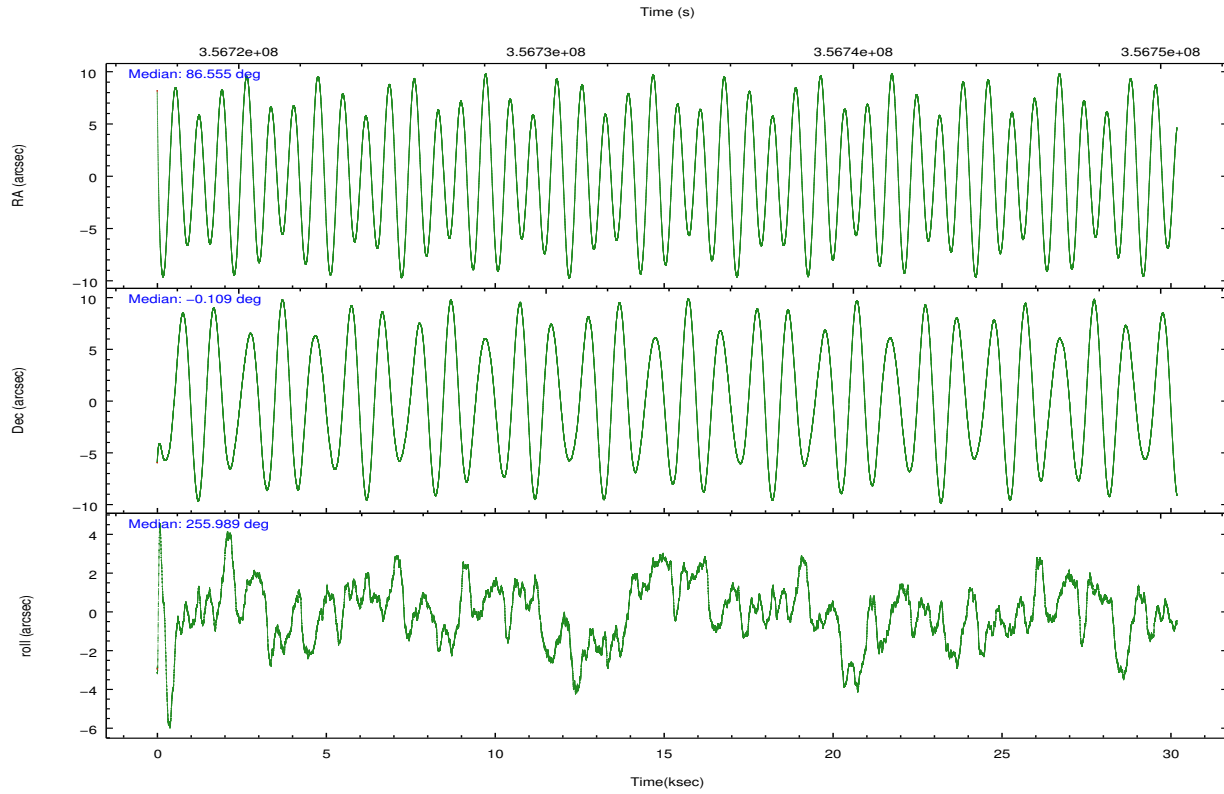
	ccd 0	ccd 1	ccd 2	ccd 3
grade 0 events	16705	16327	17568	16820
	5%	5%	5%	5%
grade 1 events	195	226	232	229
	0%	0%	0%	0%
grade 2 events	9134	9979	8408	7869
	3%	3%	2%	2%
grade 3 events	3741	3895	3431	3505
	1%	1%	1%	1%
grade 4 events	3496	3830	3572	3705
	1%	1%	1%	1%
grade 5 events	13276	14015	12738	14919
	4%	4%	4%	4%
grade 6 events	7158	8352	6464	6968
	2%	2%	2%	2%
grade 7 events	233855	241065	260003	258519
	81%	80%	83%	82%

2.2 Compared Parameters

Parameter	Planned	Actual	Parameter	Planned	Actual
Instrument	ACIS	ACIS	Obspar format version number	7	7
Detector	ACIS-0123	ACIS-0123	Obspar file type	PREDICTED	ACTUAL
Grating	NONE	NONE	Obspar update status	NONE	UPDATED
Data mode	FAINT	FAINT	Number of optional ACIS chips dropped	0	0
Observation mode	POINTING	POINTING	On-chip summing requested	N	N
[deg] Pointing RA	86.547363	86.55503251015024	Subarray requested	NONE	NONE
[deg] Pointing Dec	-0.083005	-0.1094074817707031	Alternating exposures requested	N	N
[deg] Pointing Roll	255.785050	255.9937431428977	[s] Primary exposure time	0.000000	3.1
[mm] SIM focus pos	-0.782348	-0.7809083437167272			
[mm] SIM defocus	0	0.001439871863259334			
[mm] SIM translation stage pos	-233.592463	-233.5874344608287			
[mm] SIM translation stage offset	0	-0.005018542100998502			
[s] Observation start time (MET)	356719026.184000	356717890.7722			
Observation start date	2009-04-21T16:36:00	2009-04-21T16:18:10			
[s] Observation end time (MET)	356749026.184000	356749991.2113			
Observation end date	2009-04-22T00:56:00	2009-04-22T01:13:11			
Read mode	TIMED	TIMED			

2.3 Aspect



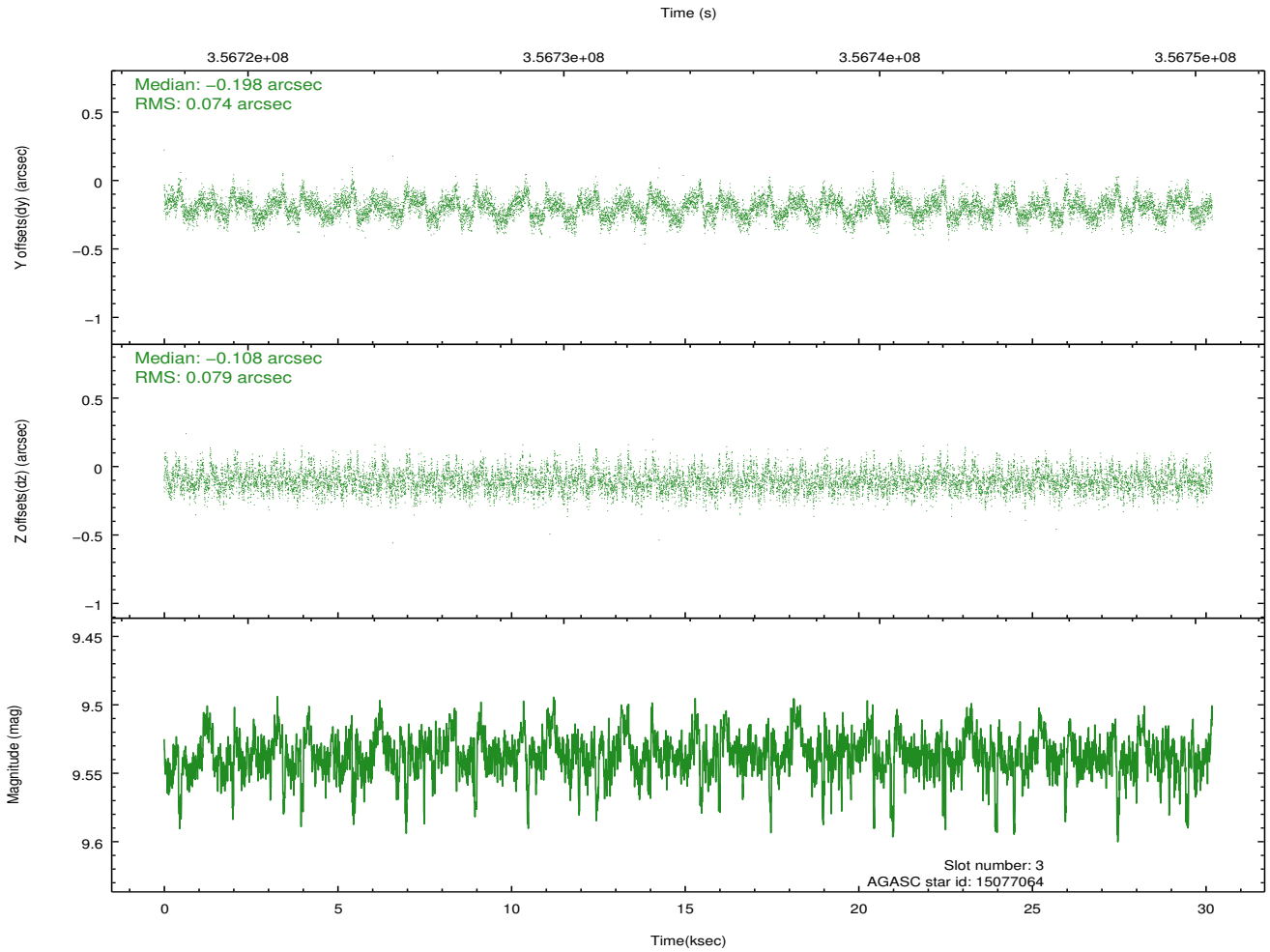
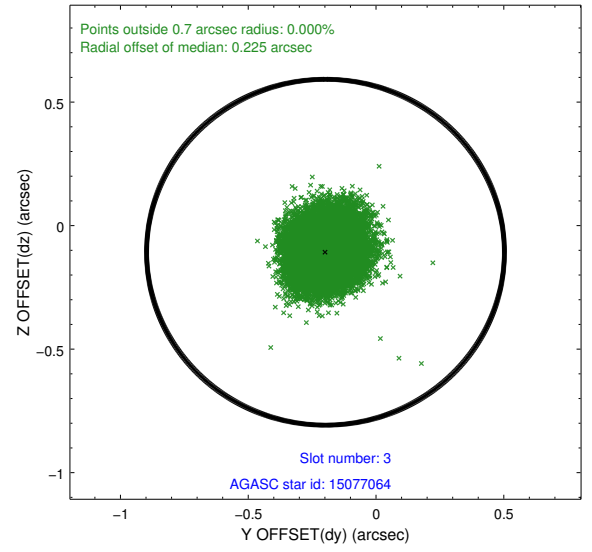
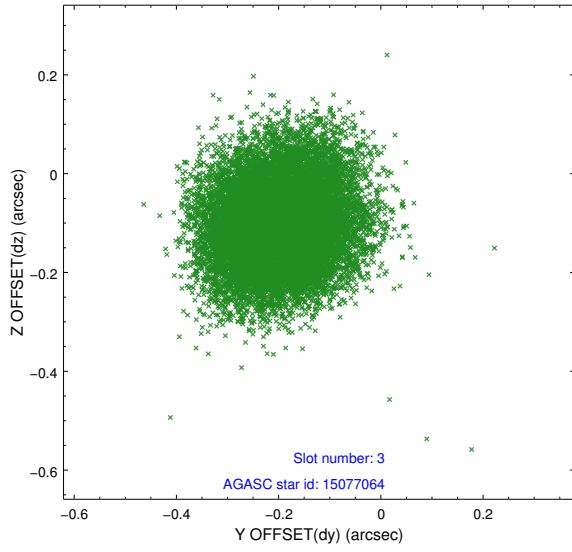


Slot Statistics

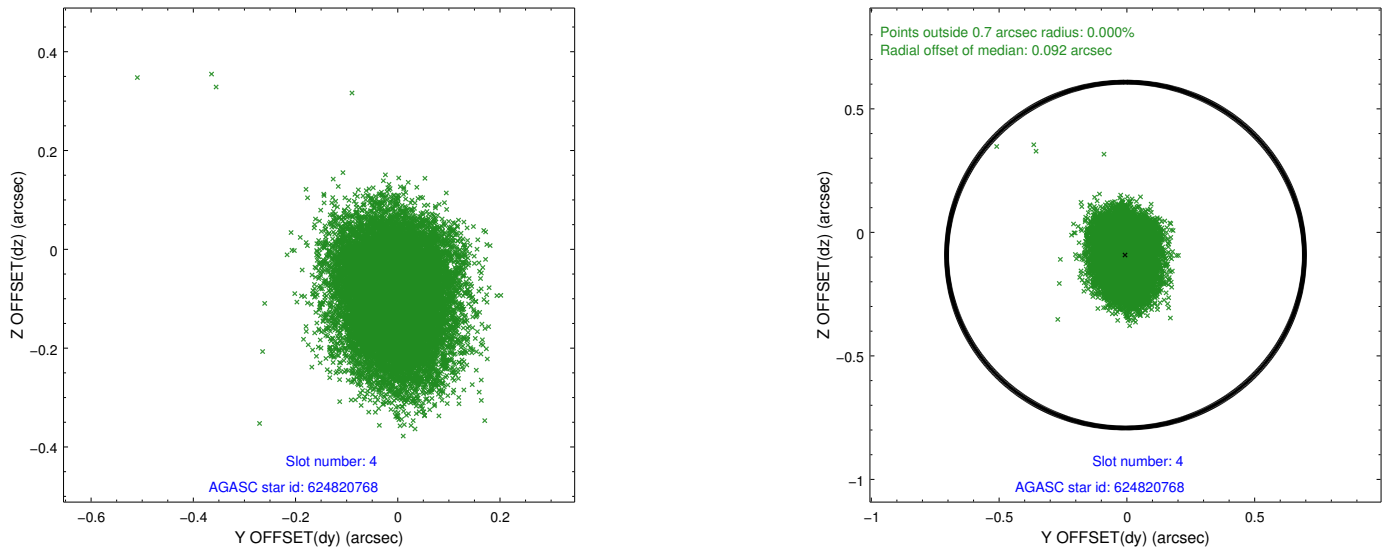
slot	status	id	mag	n_pts	med_dy	med_dz	dr1	dr2	ra	dec	mean_y	mean_z
0	FID	ACIS-I-1	7.03	7363	0.067	-0.038	0.016	0.079	0.000000	0.000000	925.97	-839.71
1	FID	ACIS-I-5	7.02	7362	-0.217	0.066	0.015	0.048	0.000000	0.000000	-1822.35	1057.85
2	FID	ACIS-I-6	7.02	7362	0.062	0.041	0.012	0.029	0.000000	0.000000	391.46	1702.40
3	GUIDE	15077064	9.54	14606	-0.198	-0.108	0.115	0.185	86.127122	0.497728	-1654.87	-1980.09
4	GUIDE	624820768	9.11	14716	-0.005	-0.092	0.107	0.174	86.202480	-0.061953	231.76	-1222.30
5	GUIDE	624954088	9.58	14604	0.094	0.084	0.116	0.187	86.606399	-0.671650	2002.47	726.65
6	GUIDE	624954400	9.17	14707	0.156	-0.126	0.090	0.149	86.607838	-0.762568	2318.65	812.00
7	GUIDE	624956456	8.02	14656	-0.049	0.239	0.064	0.101	87.042614	-0.748935	1886.56	2317.53

2.4 Star Slots

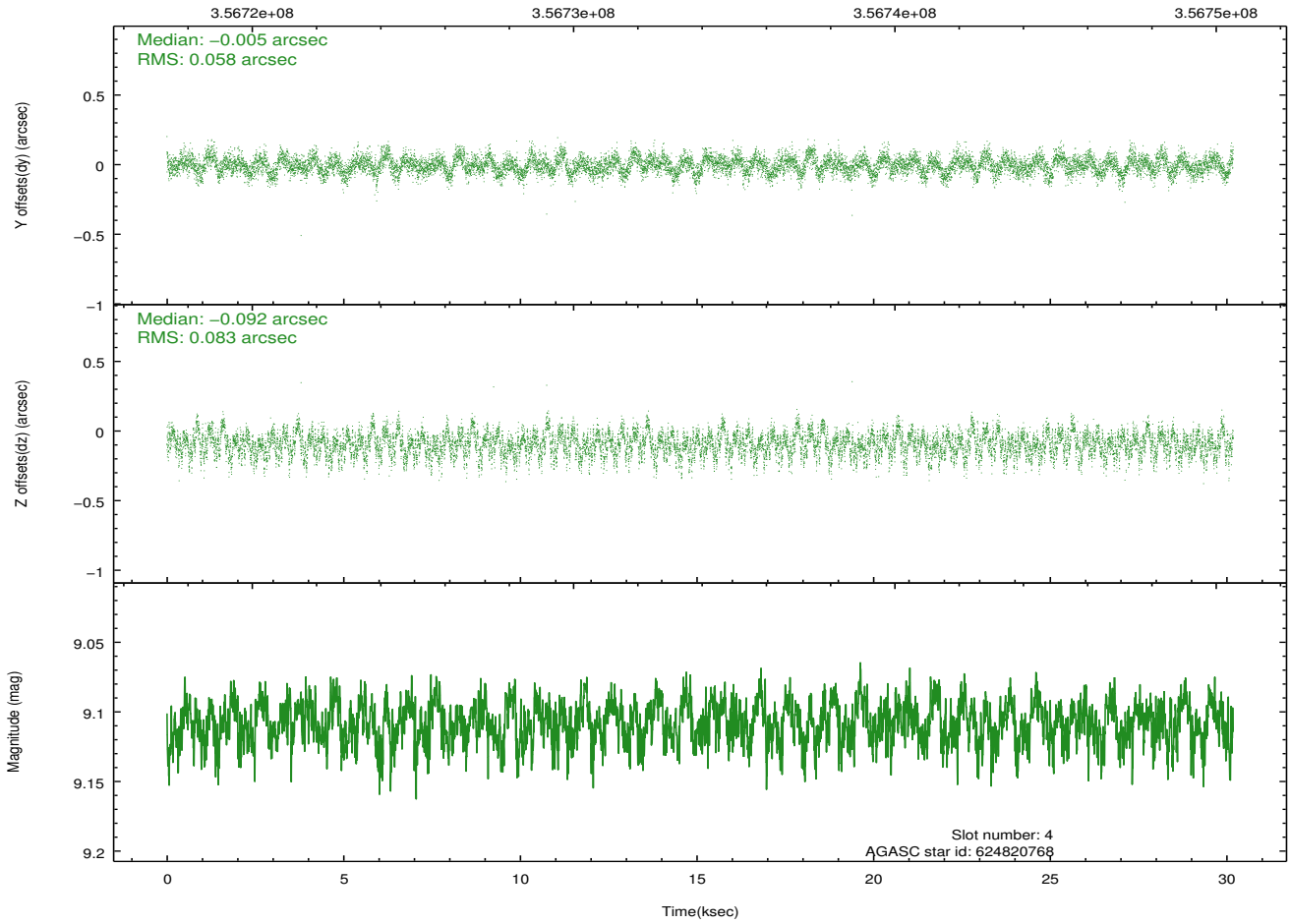
2.4.1 Slot 3



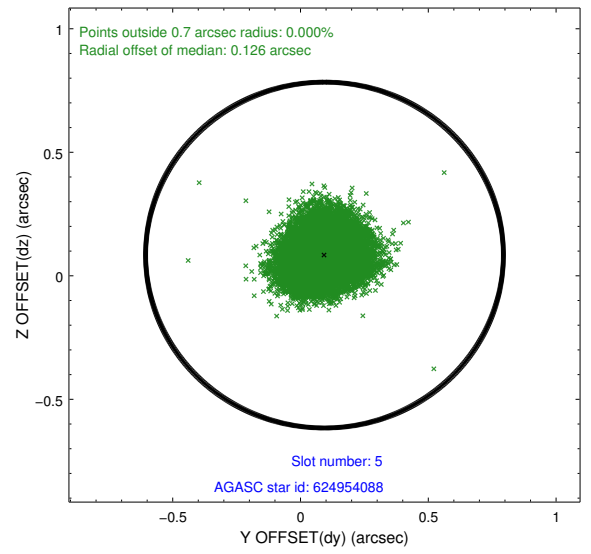
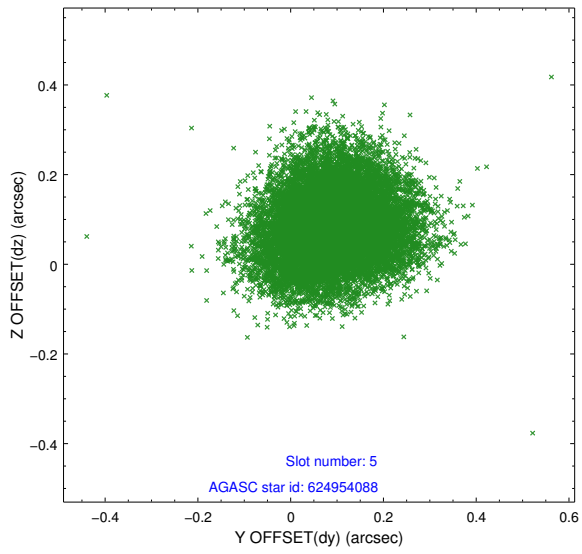
2.4.2 Slot 4



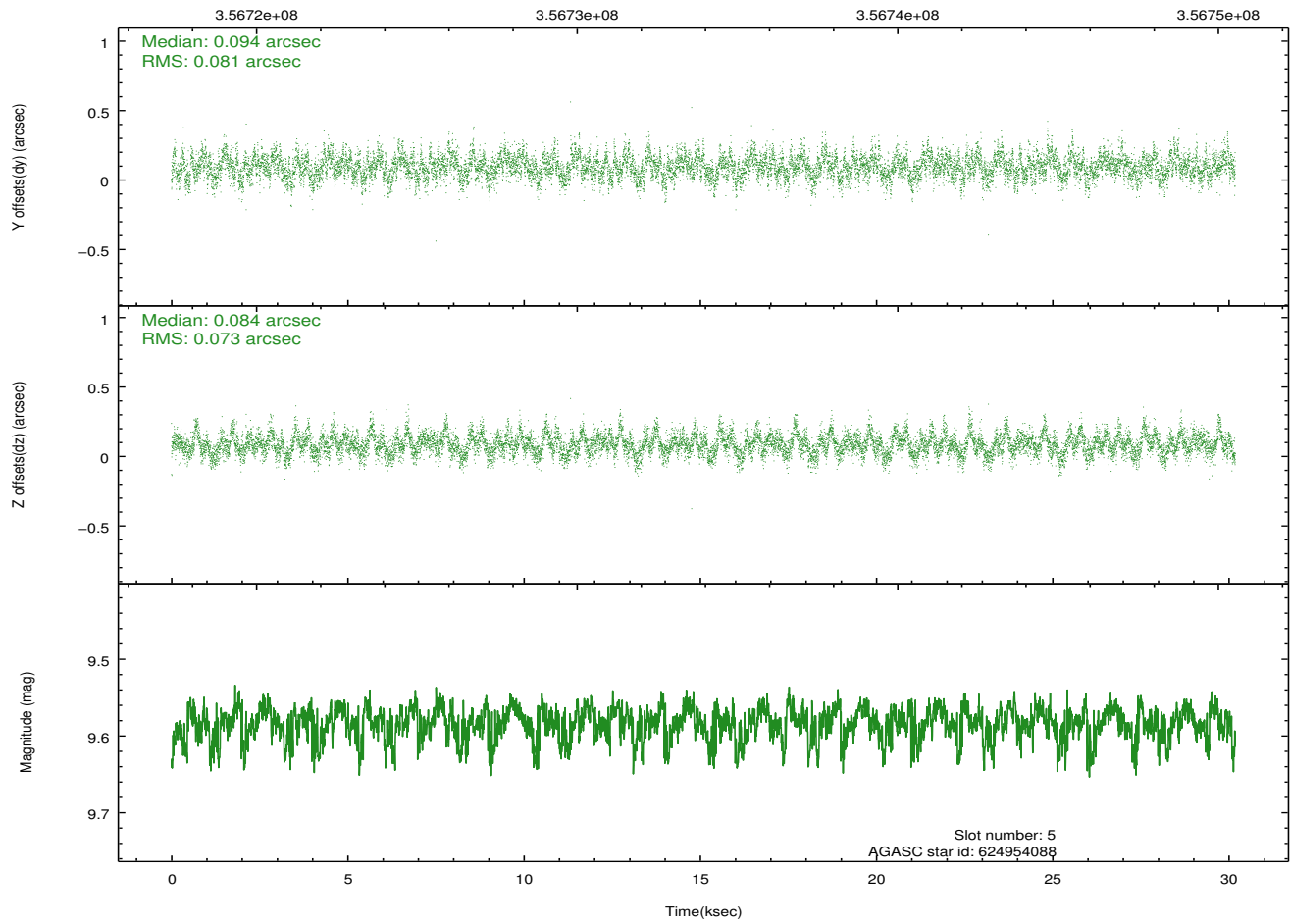
Time (s)



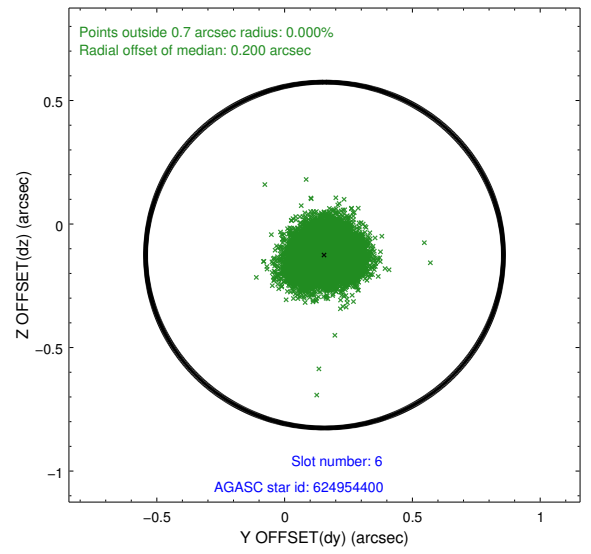
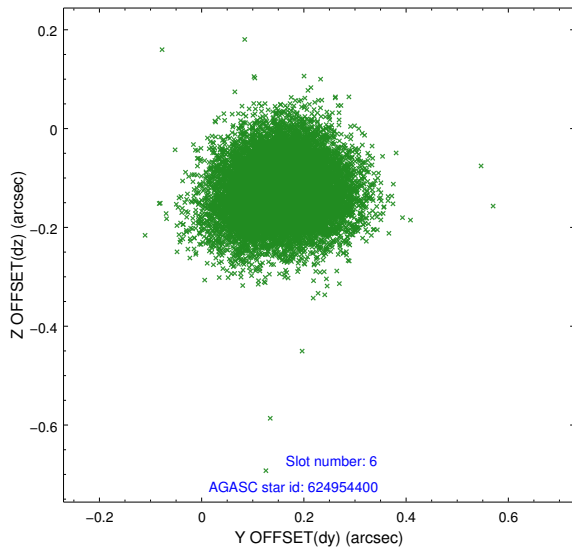
2.4.3 Slot 5



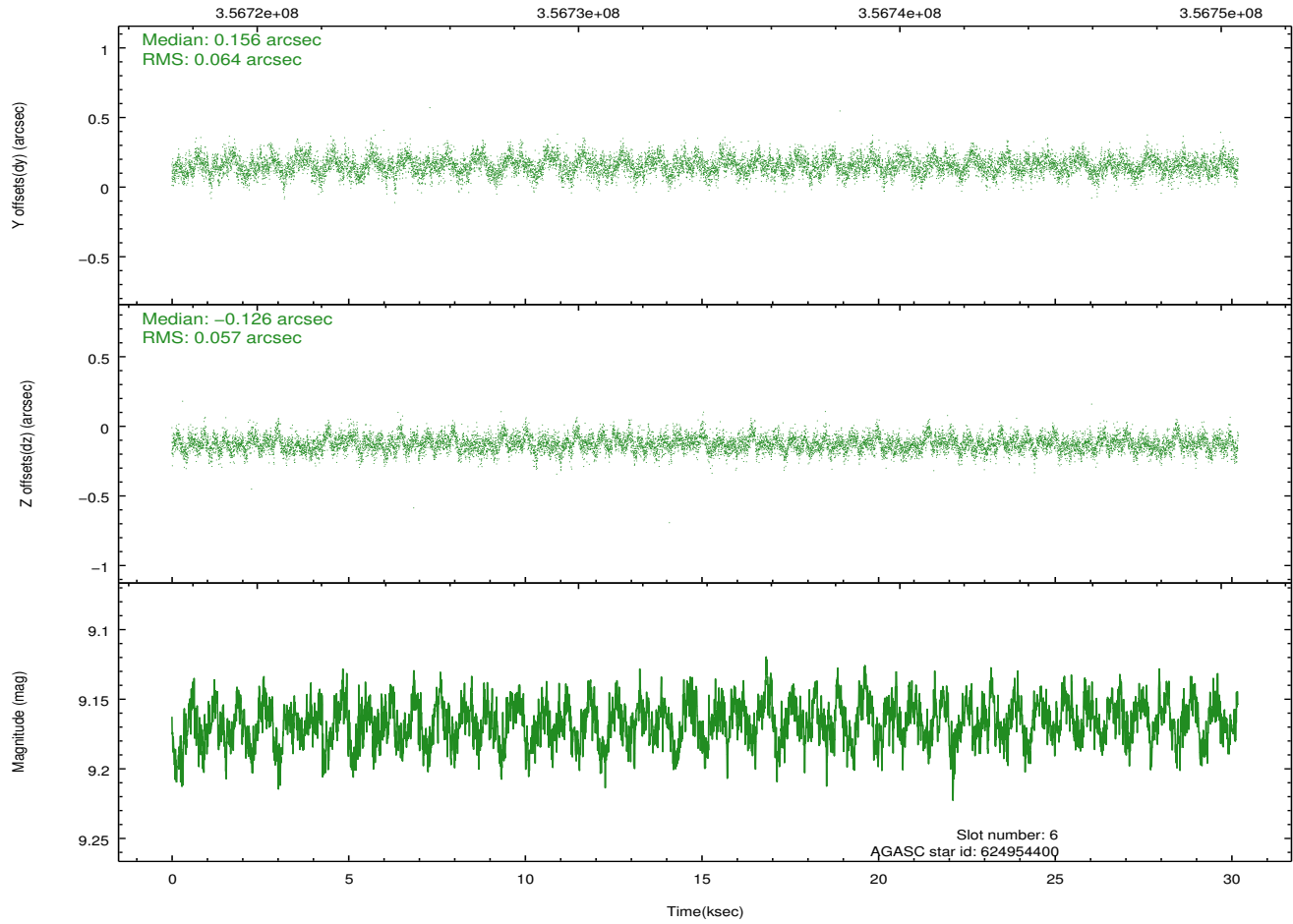
Time (s)



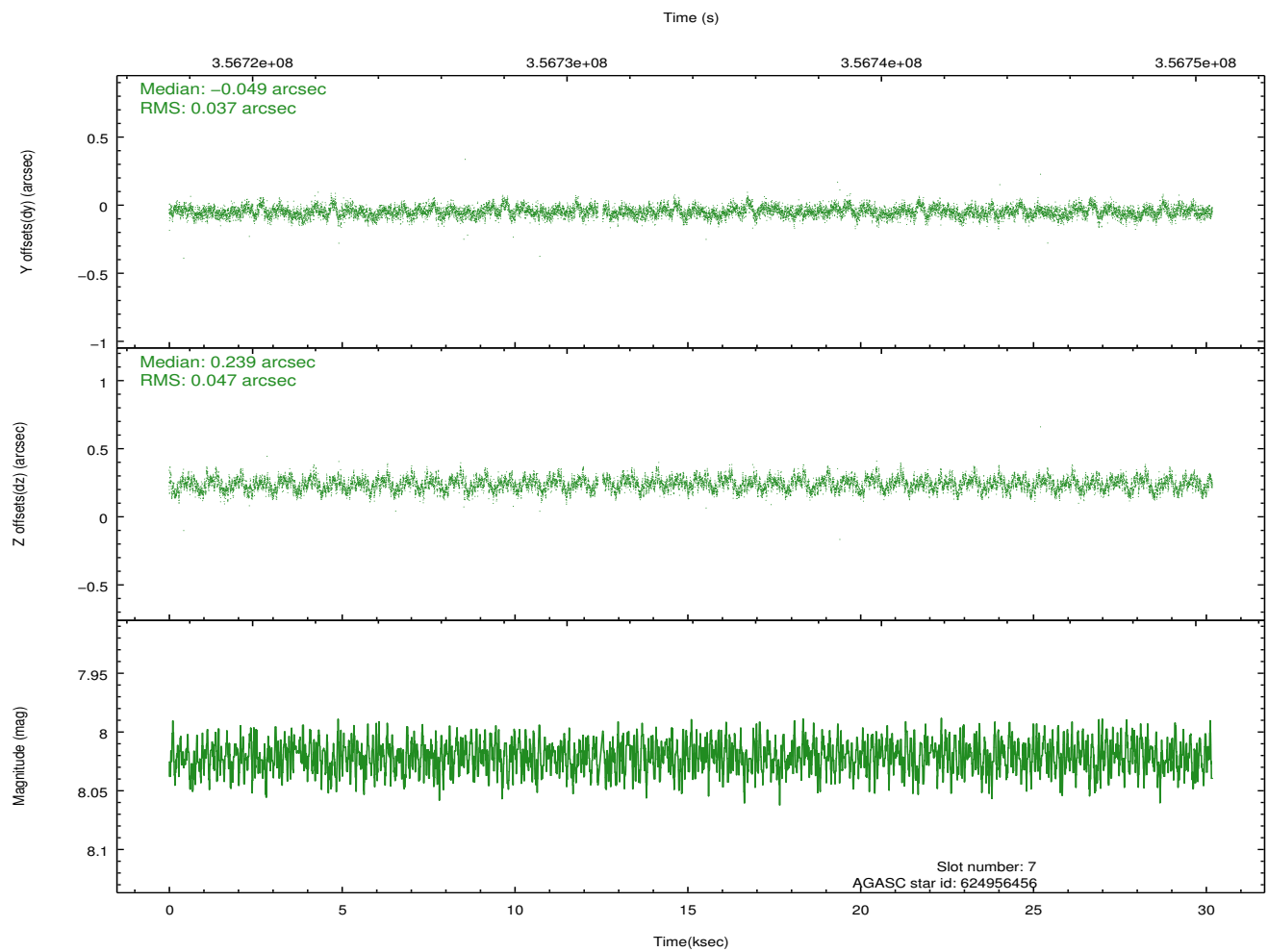
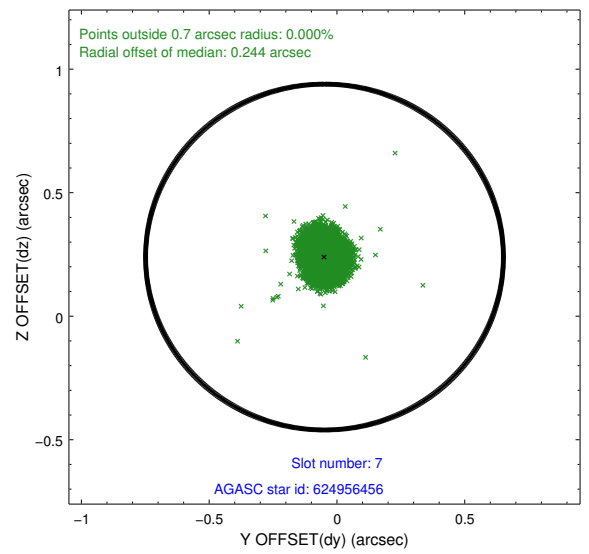
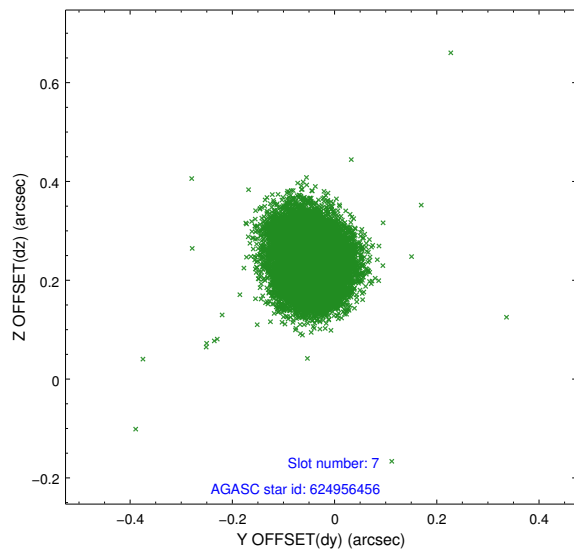
2.4.4 Slot 6



Time (s)

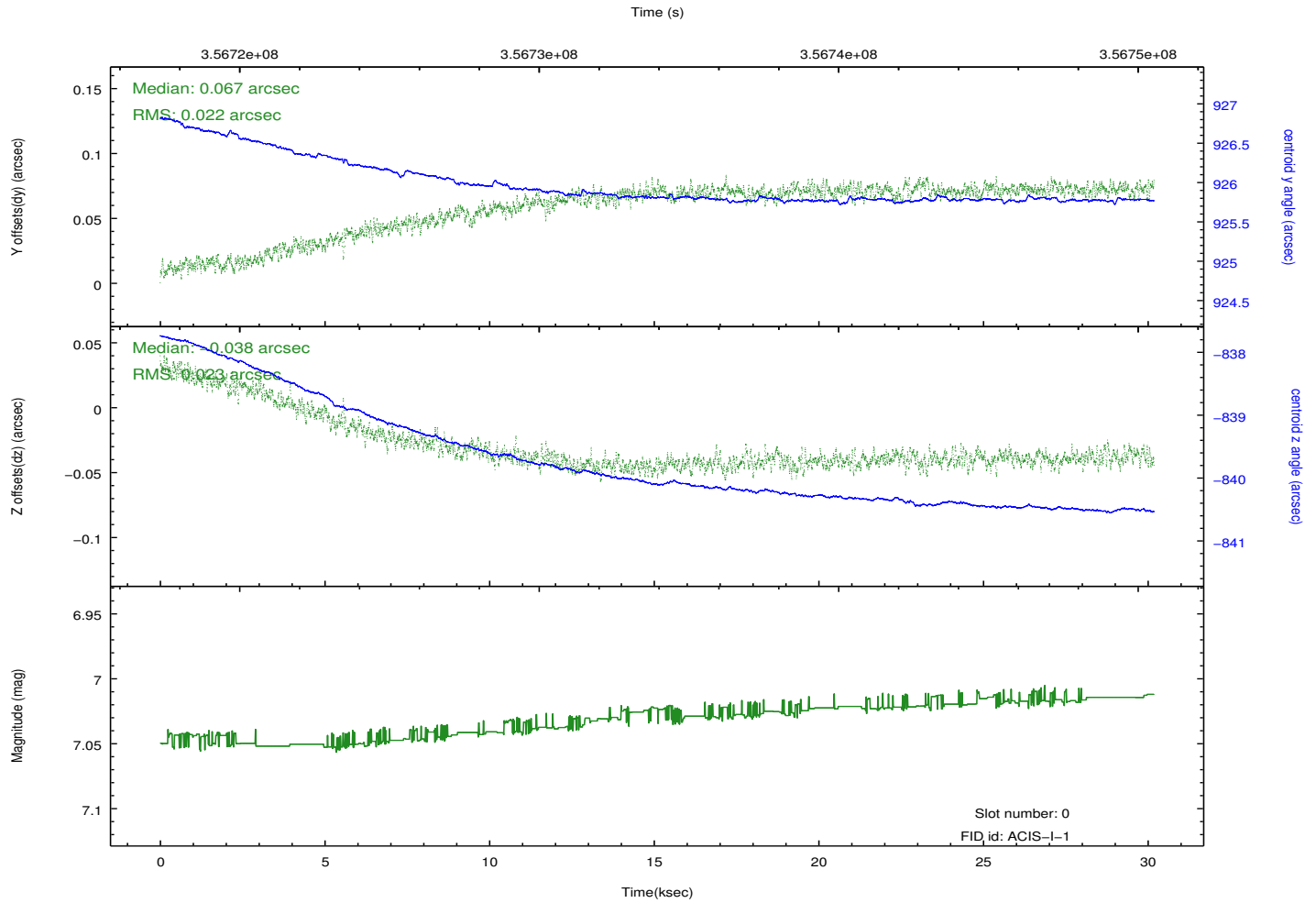
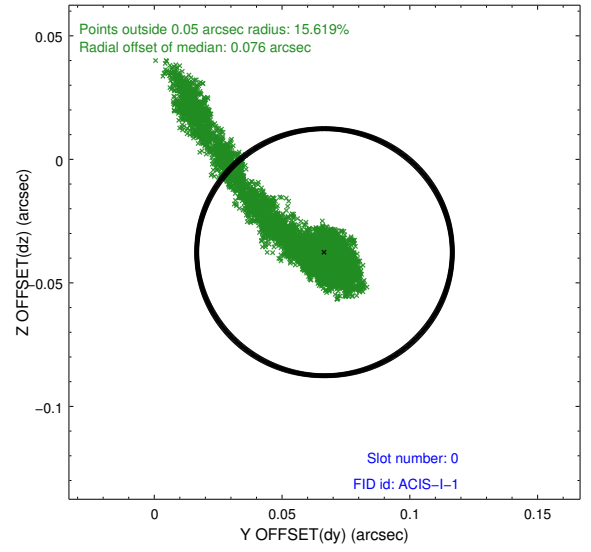
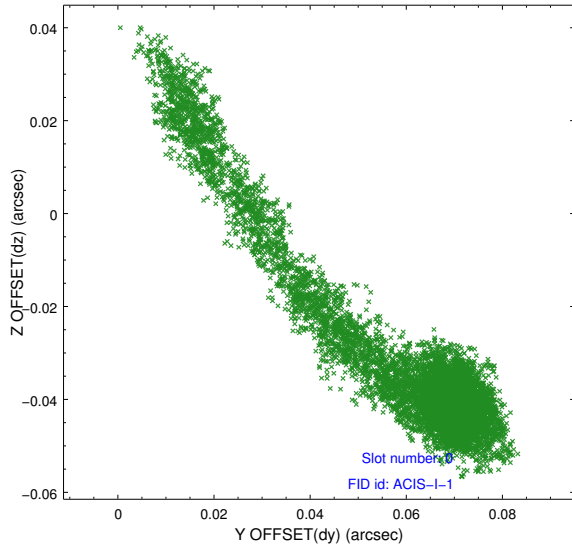


2.4.5 Slot 7

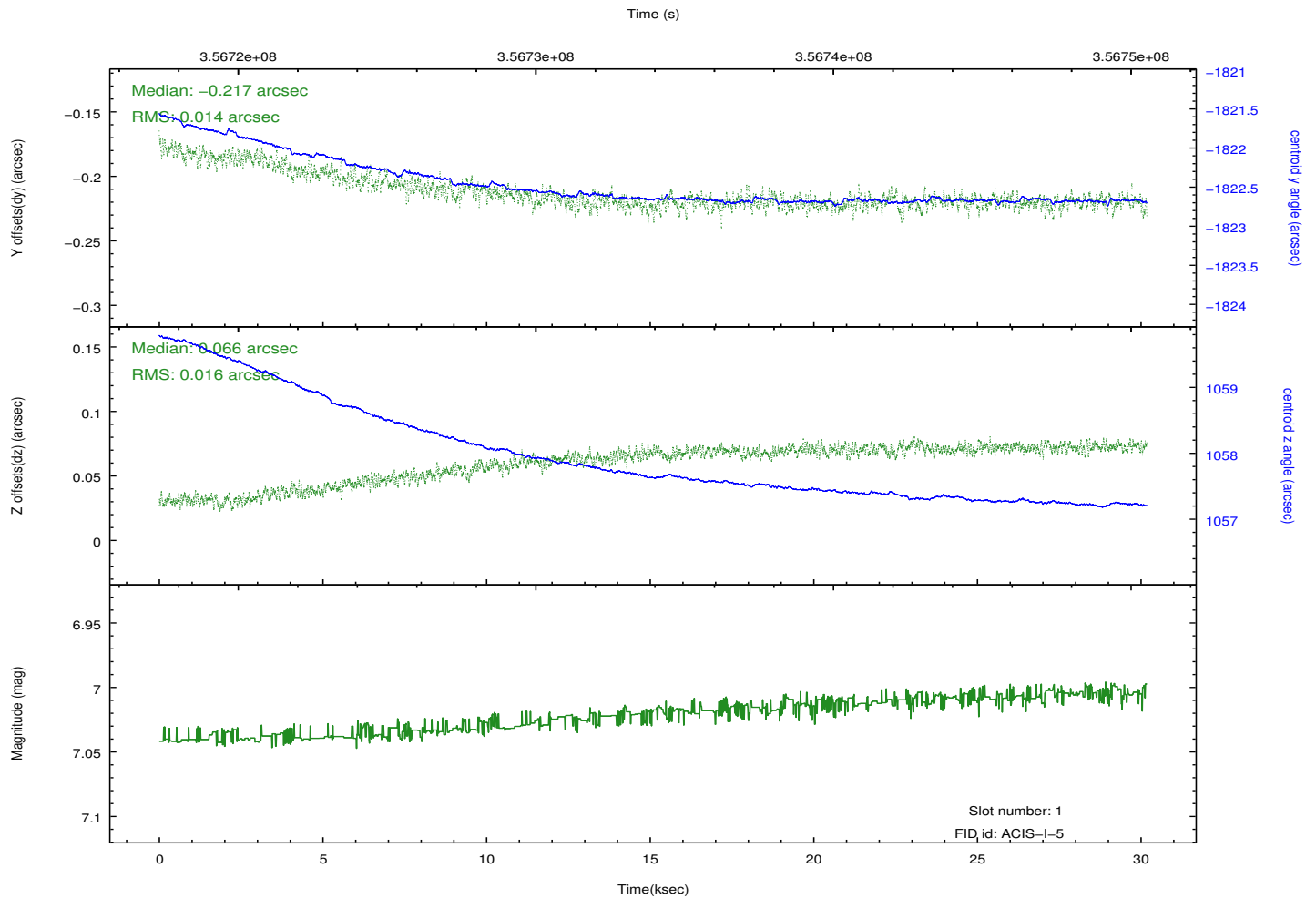
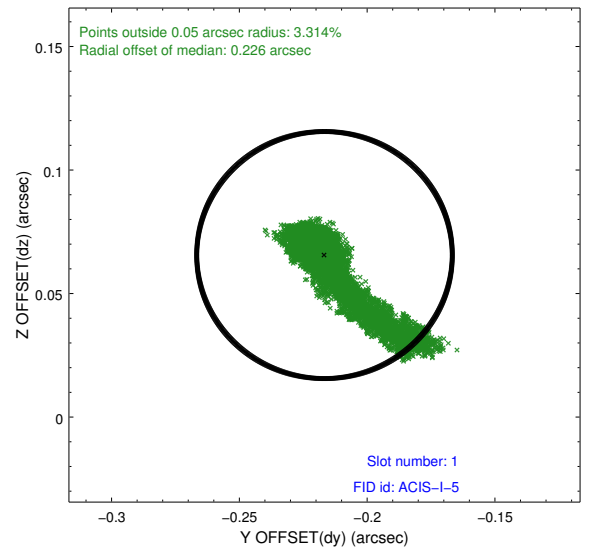
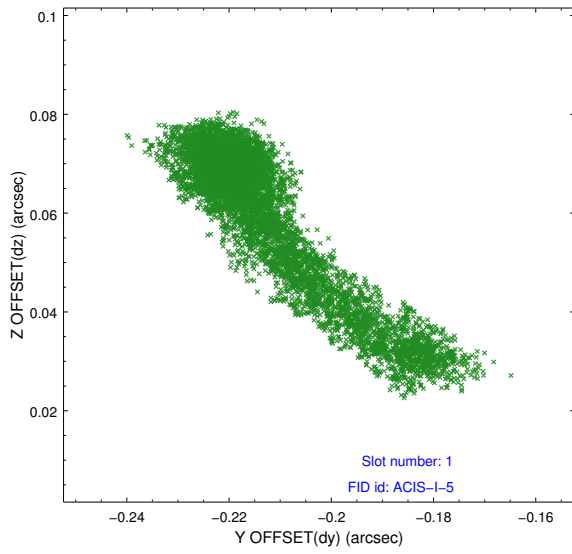


2.5 FID Slots

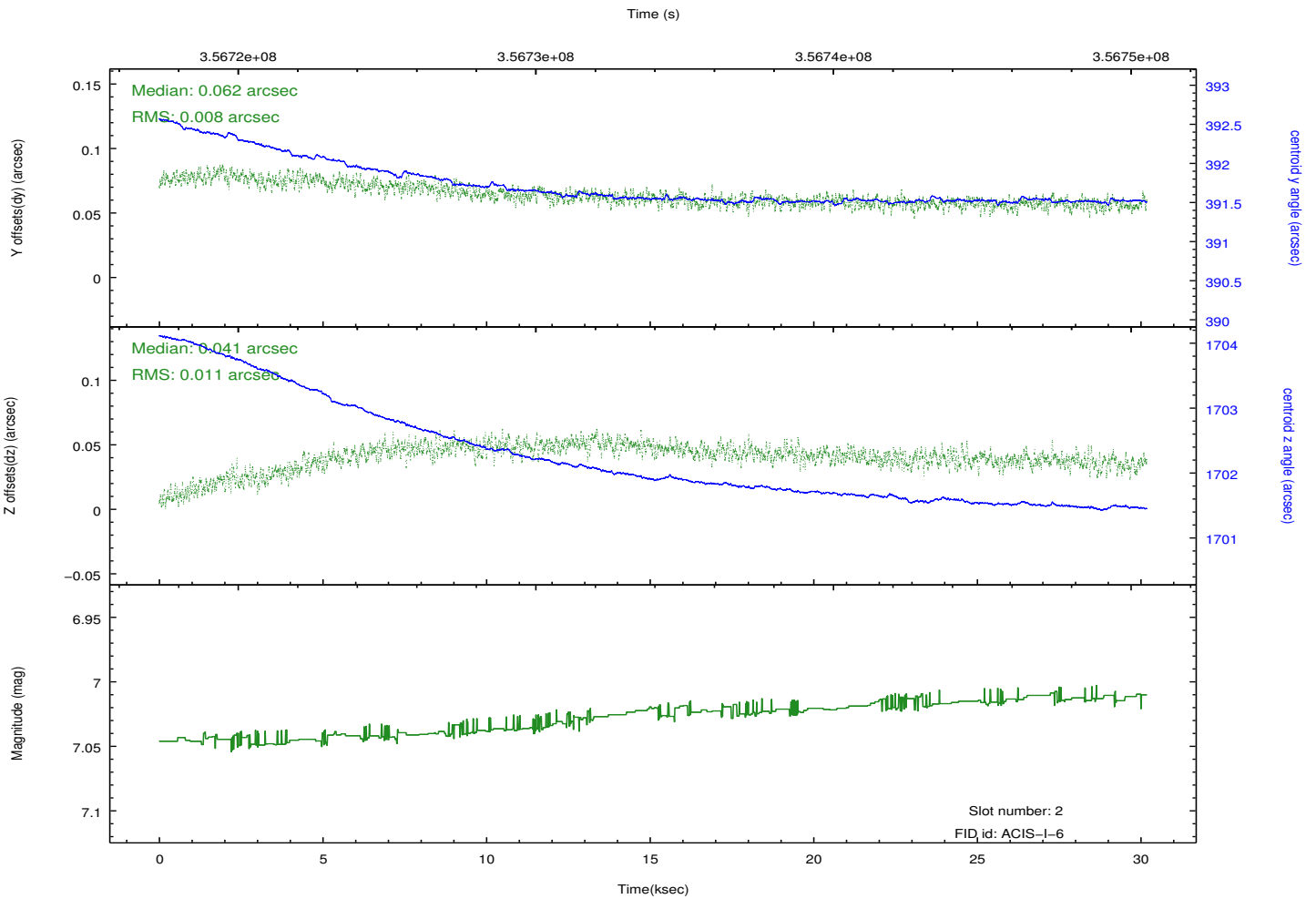
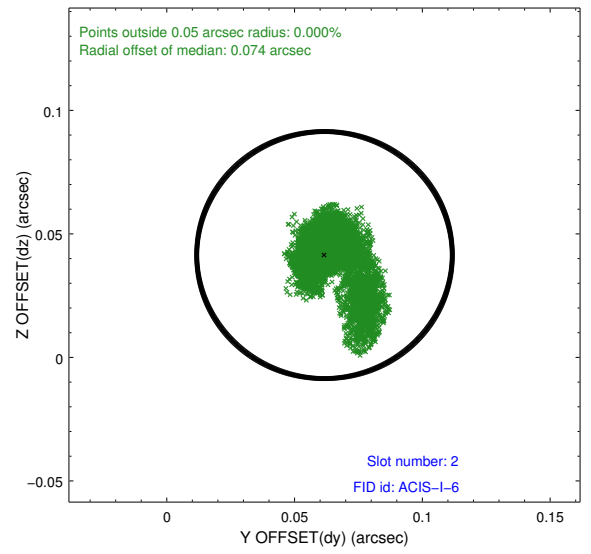
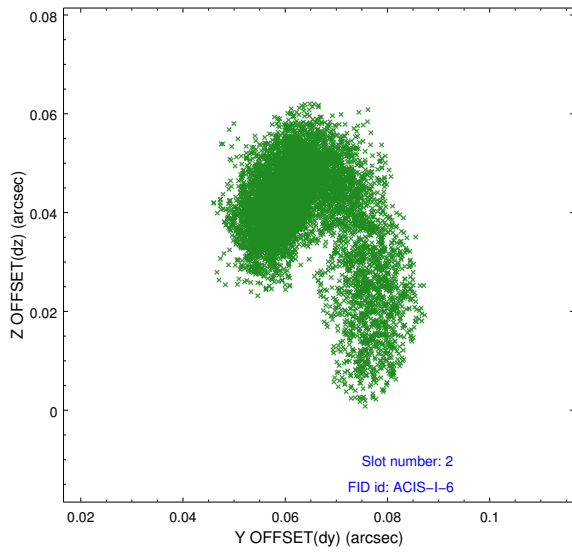
2.5.1 Slot 0



2.5.2 Slot 1



2.5.3 Slot 2



A Summary

A.1 Status

V&V Scientist	Jen Lauer
V&V Date (YYYY-MM-DD)	2012.06.07
V&V Edition	1
V&V Disposition and Status	OK
V&V Charge Time	30.1784592

A.2 Comments