

V&V Reference Report

L2 ASCDS Version : 8.4.5

Observation 10128 - L2 Version 2
Chandra X-Ray Center

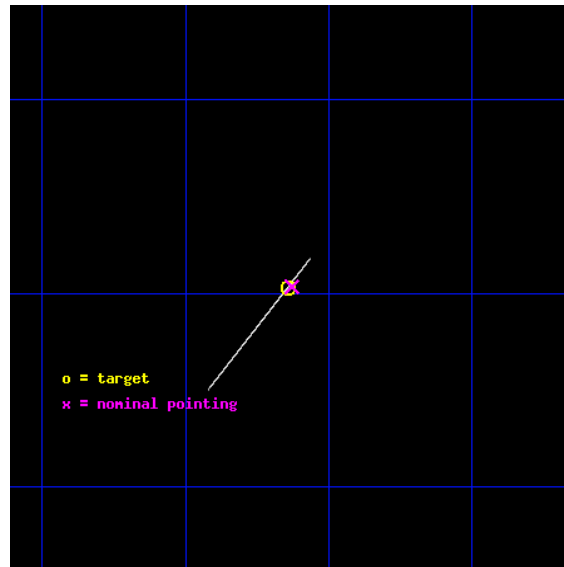
L2 Processing Date : Jun 8 2012

Contents

1	Front	2
2	OBI	3
2.1	OBI	3
2.1.1	Images	3
2.1.2	Bias	3
2.1.3	Parameters	4
2.1.4	Events	4
2.2	Compared Parameters	5
2.3	Aspect	6
2.4	Star Slots	9
2.4.1	Slot 3	9
2.4.2	Slot 4	10
2.4.3	Slot 5	11
2.4.4	Slot 6	12
2.4.5	Slot 7	13
2.5	FID Slots	14
2.5.1	Slot 0	14
2.5.2	Slot 1	15
2.5.3	Slot 2	16
A	Summary	17
A.1	Status	17
A.2	Comments	17

1 Front

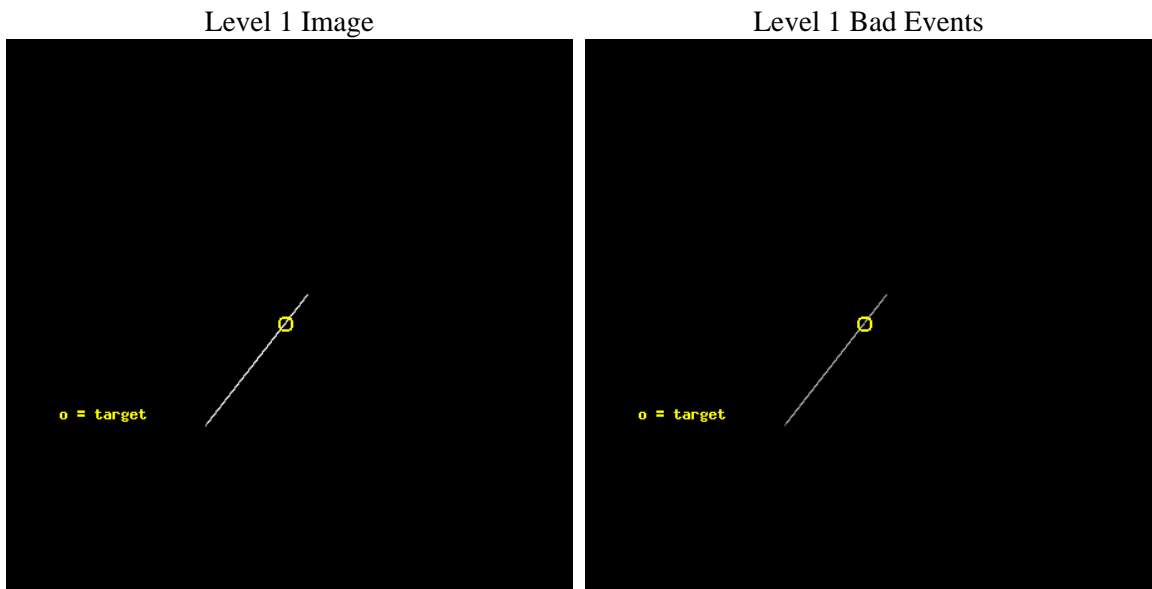
seq_num	501055	Sequence number
obs_id	10128	Observation id
title	The Weakly Magnetized Pulsar in Kes 79	Proposal title
observer	Prof. Jules Halpern	Principal investigator
object	PSR J1852+0040	Source name
ra_targ	283.160833	Observer's specified target RA [deg]
dec_targ	0.672167	Observer's specified target Dec [deg]
ra_nom	283.15729525931	Nominal RA [deg]
dec_nom	0.67252781827214	Nominal Dec [deg]
roll_nom	128.19388493405	Nominal Roll [deg]
revision	2	Processing version of data
ontime	32176.0	Sum of GTIs [s]
liveltime	32050.3125	Livetime [s]
ontime7	32176.0	Sum of GTIs [s]
l2events	227124	Number of level 2 events



2 OBI

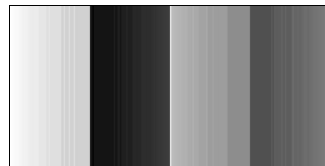
2.1 OBI

2.1.1 Images



2.1.2 Bias

Chip 7



2.1.3 Parameters

obi_num	0	Obi number	sched_exp_time	32000.000000	[s] Scheduled observation exposure time
ascdsver	8.4.5	Processing system revision	ontime	32176.0	Sum of GTIs [s]
caldsver	4.4.10	 	ontime7	32176.0	Sum of GTIs [s]
date	2012-06-08T06:36:24	Date and time of file creation	l1events	273764	Number of level 1 events
revision	2	Processing version of data			

2.1.4 Events

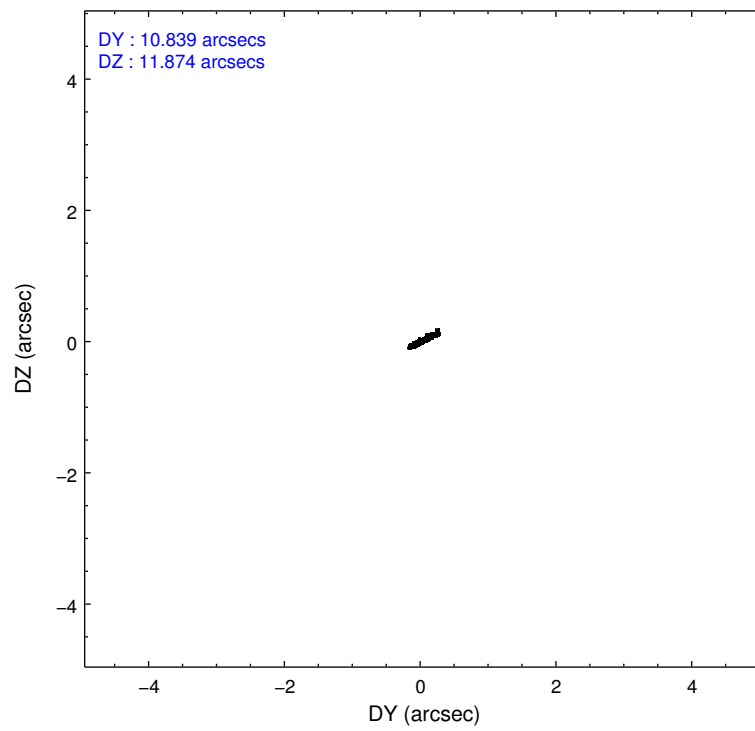
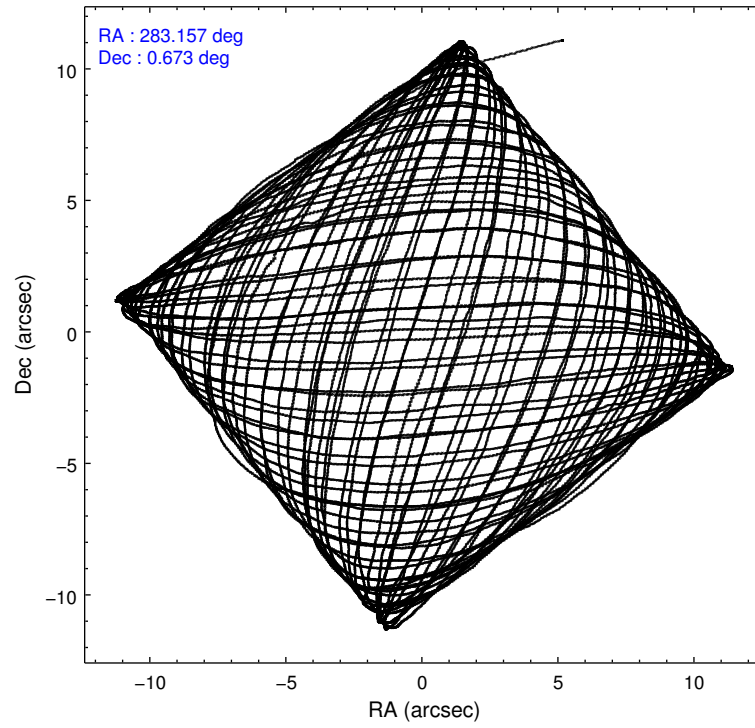
	ccd 7
level 1 events	273764
rejected events	38141
rejected %	13%

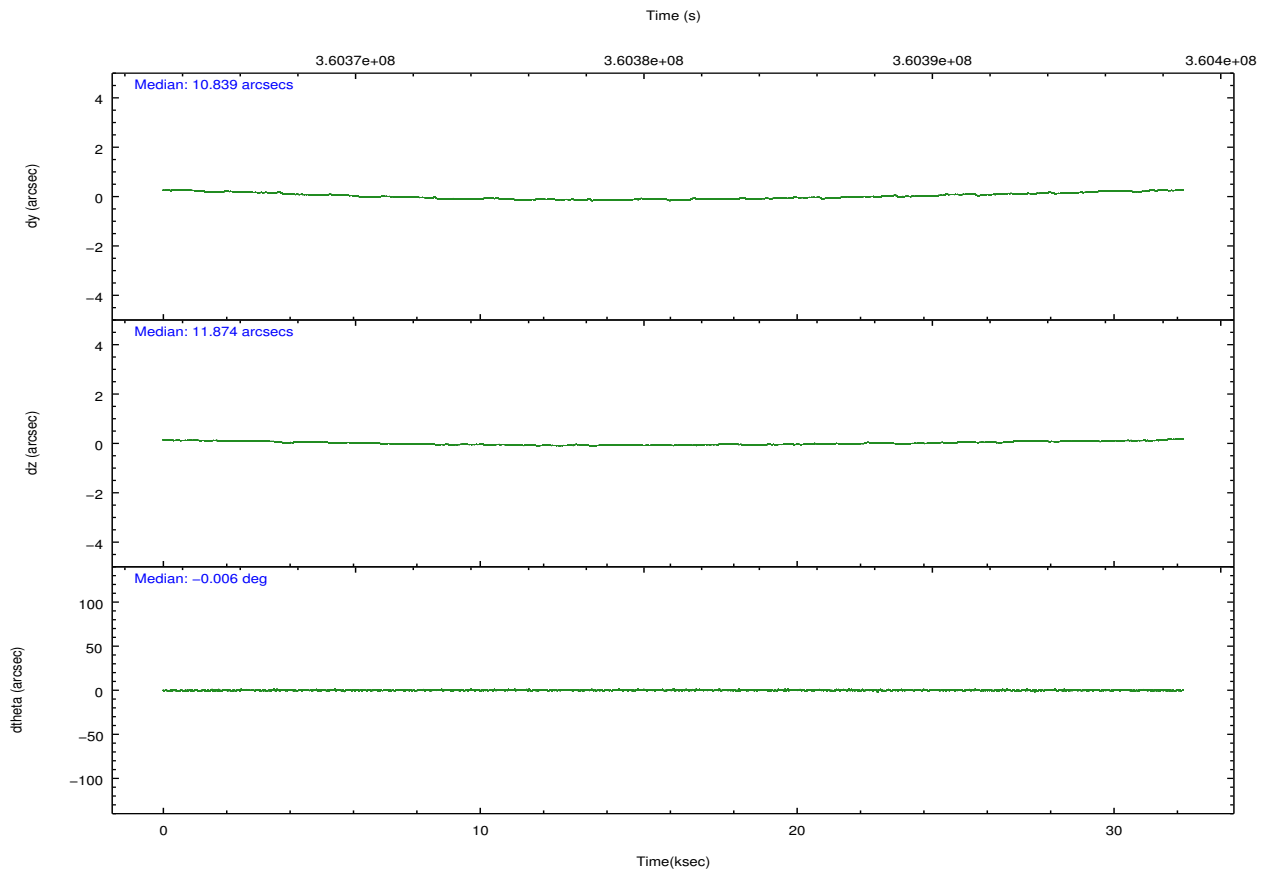
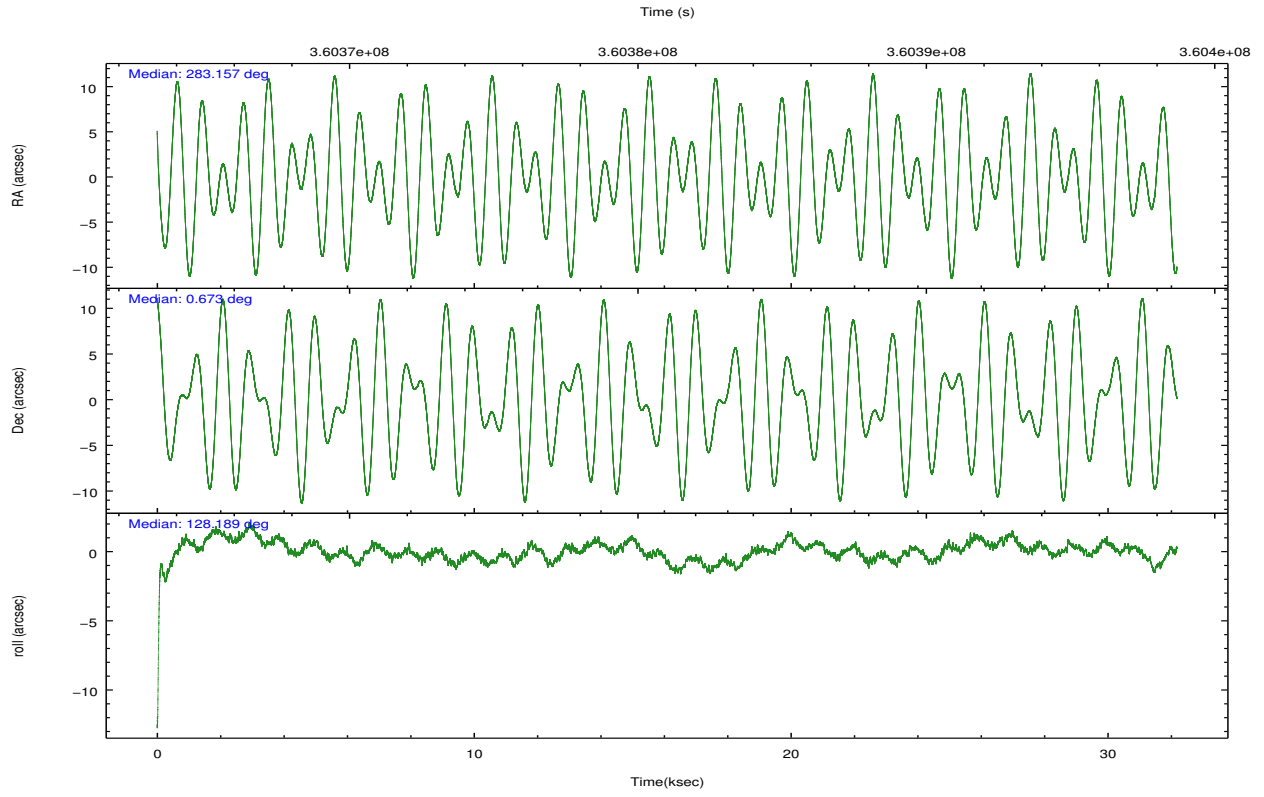
	ccd 7
grade 0 events	24192
	8%
grade 1 events	529
	0%
grade 2 events	64638
	23%
grade 3 events	14693
	5%
grade 4 events	14298
	5%
grade 5 events	36163
	13%
grade 6 events	119251
	43%
grade 7 events	0
	0%

2.2 Compared Parameters

Parameter	Planned	Actual	Parameter	Planned	Actual
Instrument	ACIS	ACIS	Obspar format version number	7	7
Detector	ACIS-7	ACIS-7	Obspar file type	PREDICTED	ACTUAL
Grating	NONE	NONE	Obspar update status	NONE	UPDATED
Data mode	CC33_FAINT	CC33_FAINT	Number of optional ACIS chips dropped	0	0
Observation mode	POINTING	POINTING	On-chip summing requested	N	N
[deg] Pointing RA	283.182836	283.1572952593091	Subarray requested	NONE	NONE
[deg] Pointing Dec	0.662715	0.6725278182721445	Alternating exposures requested	N	N
[deg] Pointing Roll	128.036962	128.1938849340461	[s] Primary exposure time	0.000000	0
[s] Window start time (MET)	360201666.184000	360201666.184000			
[s] Window stop time (MET)	362016006.184000	362016006.184000			
[mm] SIM focus pos	-0.684267	-0.6828225247311905			
[mm] SIM defocus	0	0.001444936568705701			
[mm] SIM translation stage pos	-180.462523	-180.4674950847706			
[mm] SIM translation stage offset	-9.67	-9.665027498237237			
[s] Observation start time (MET)	360365101.184000	360364403.79133			
Observation start date	2009-06-02T21:23:55	2009-06-02T21:13:23			
[s] Observation end time (MET)	360397101.184000	360398220.59301			
Observation end date	2009-06-03T06:17:15	2009-06-03T06:37:00			
Read mode	CONTINUOUS	CONTINUOUS			

2.3 Aspect



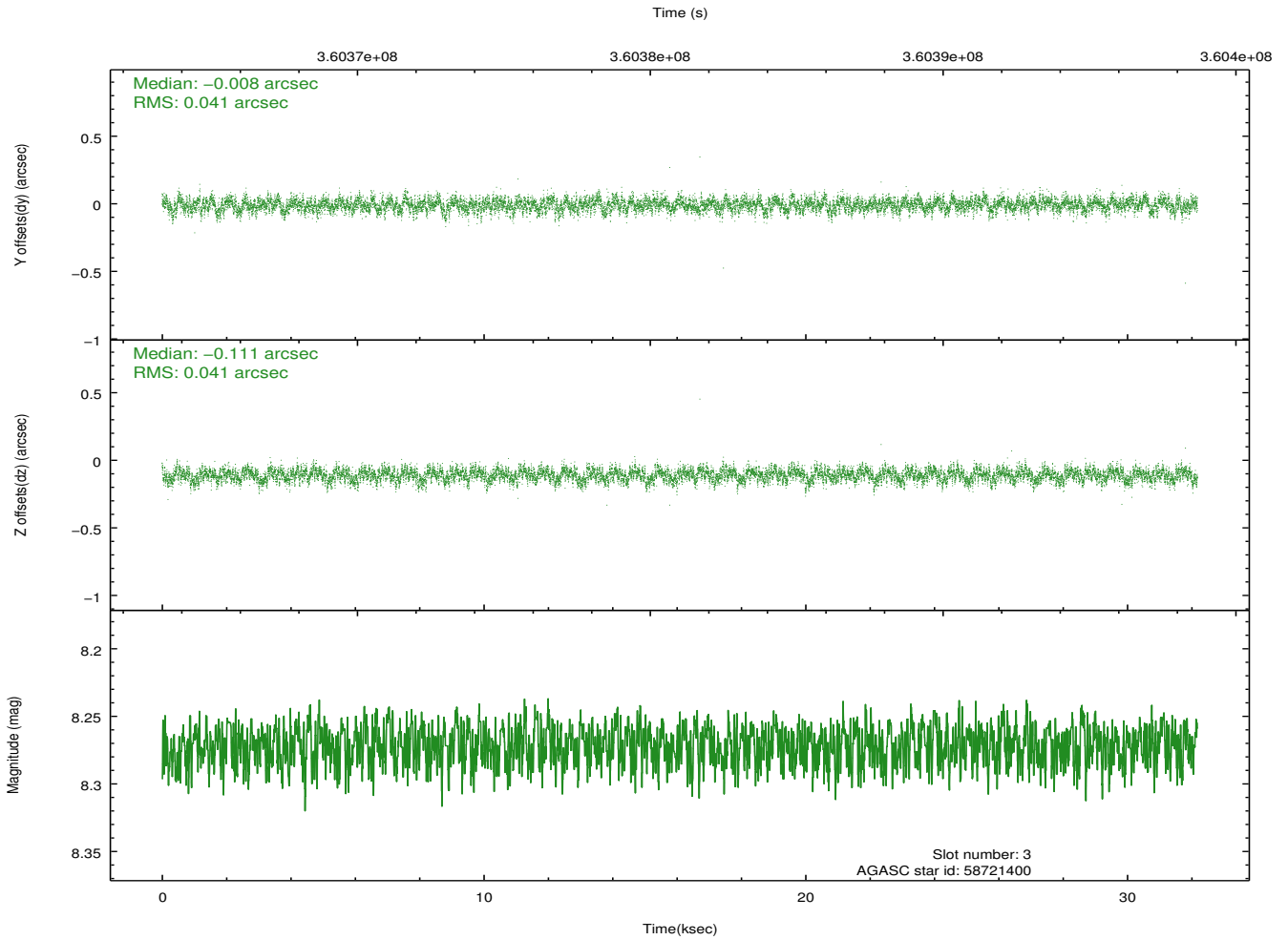
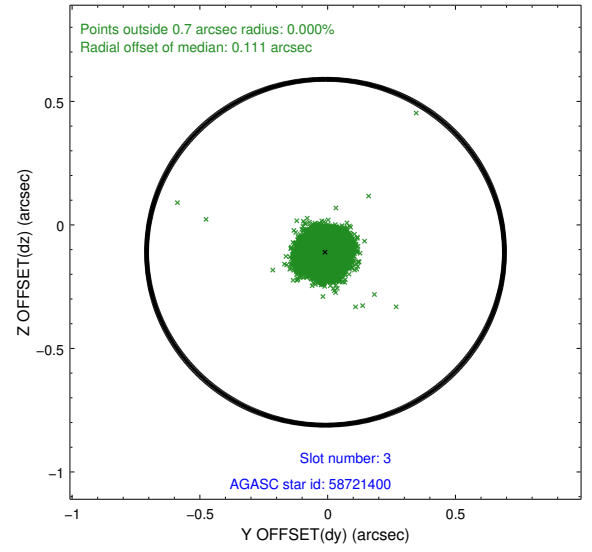
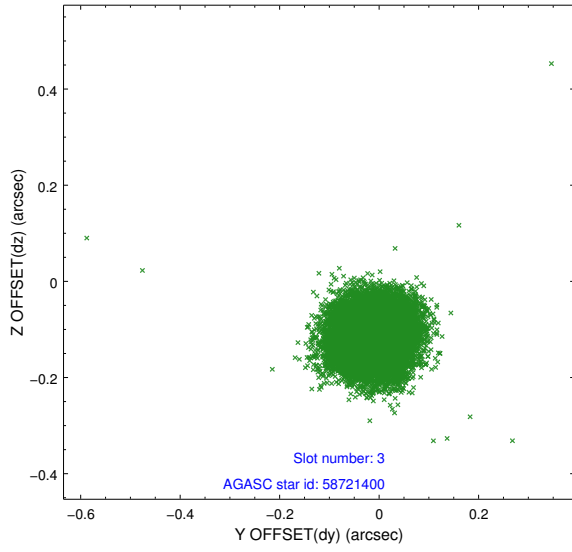


Slot Statistics

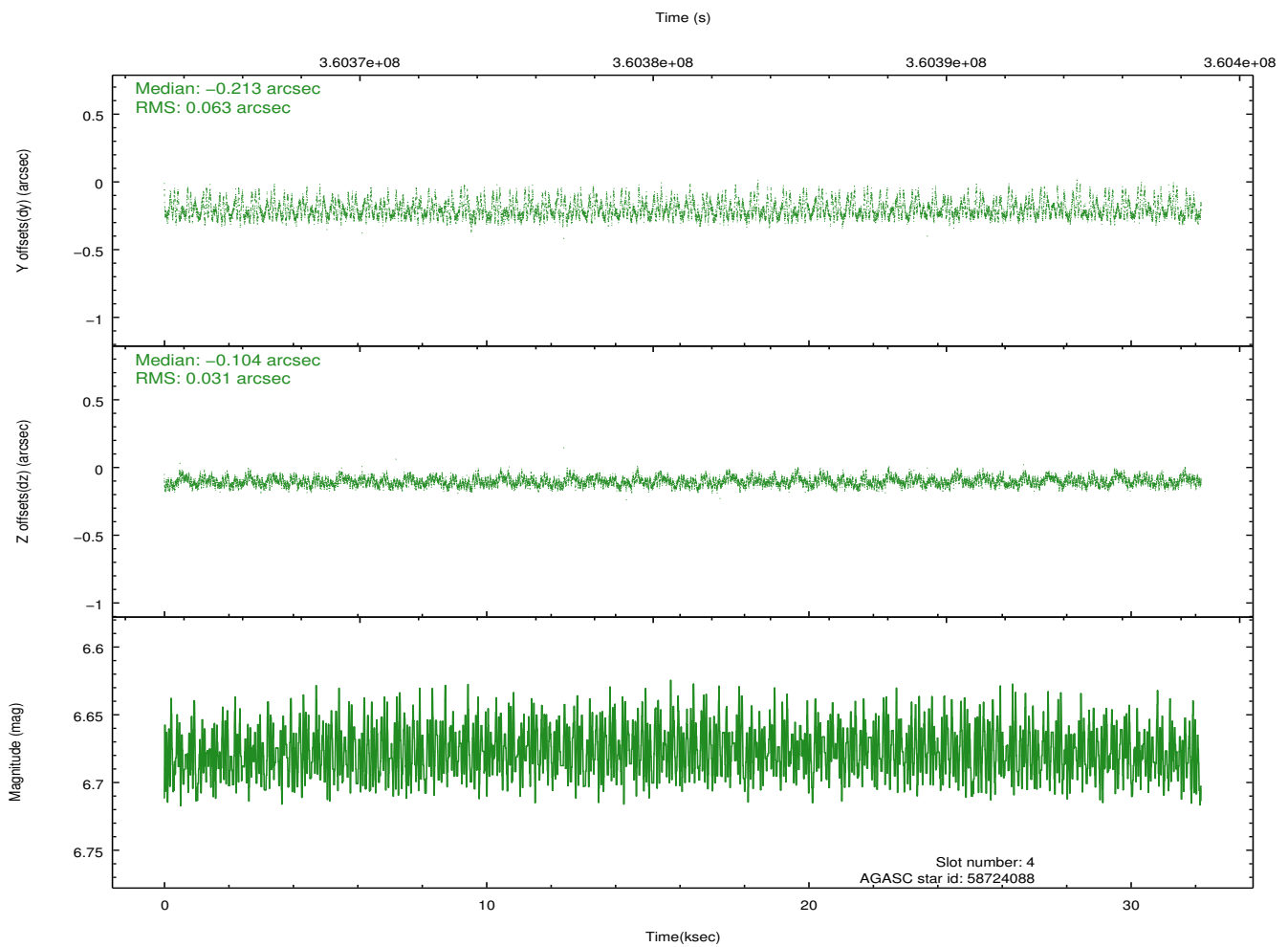
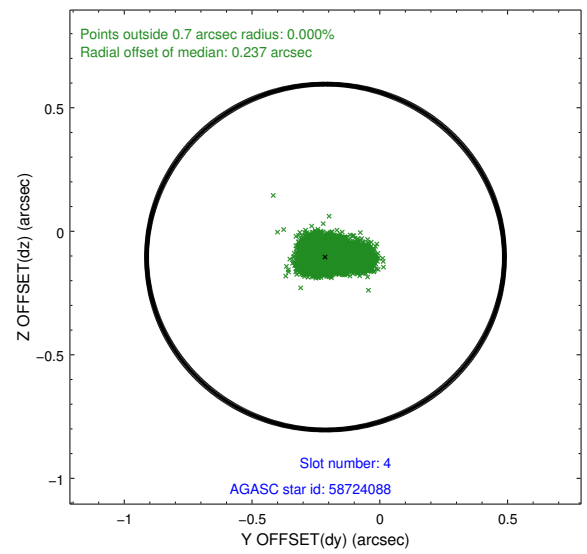
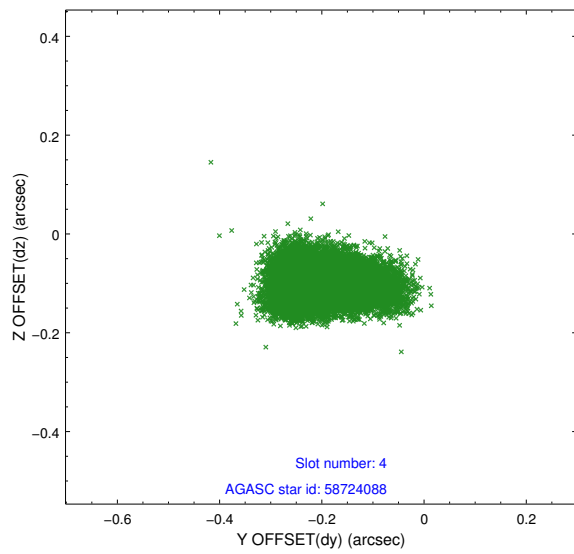
slot	status	id	mag	n_pts	med_dy	med_dz	dr1	dr2	ra	dec	mean_y	mean_z
0	FID	ACIS-S-1	6.99	7849	0.089	0.181	0.007	0.013	0.000000	0.000000	933.14	-1927.65
1	FID	ACIS-S-2	6.89	7849	-0.214	-0.163	0.008	0.013	0.000000	0.000000	-763.04	-1932.65
2	FID	ACIS-S-6	7.20	7849	0.104	-0.015	0.007	0.012	0.000000	0.000000	398.75	613.39
3	GUIDE	58721400	8.27	15684	-0.008	-0.111	0.062	0.099	282.817104	0.833240	1294.51	658.58
4	GUIDE	58724088	6.68	15699	-0.213	-0.104	0.071	0.133	282.404972	0.836197	2217.05	1820.65
5	GUIDE	58852048	8.37	15685	0.071	0.100	0.072	0.115	283.366398	0.870285	181.82	-980.51
6	GUIDE	58857104	9.19	15688	0.078	0.256	0.085	0.140	283.814800	0.638238	-1470.75	-1737.32
7	GUIDE	670303120	8.58	15685	0.059	-0.137	0.089	0.149	283.028951	-0.220247	-2162.57	2394.73

2.4 Star Slots

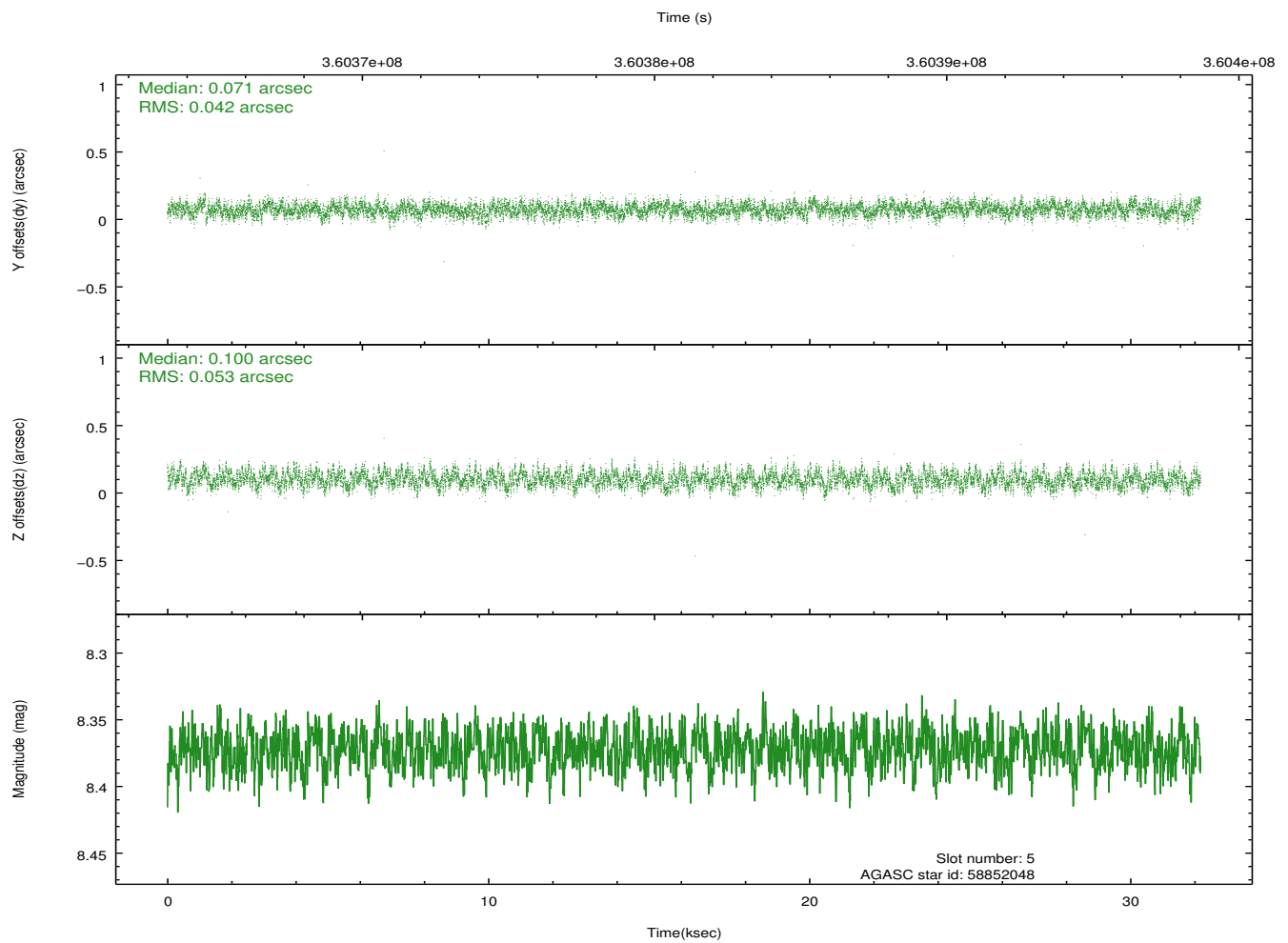
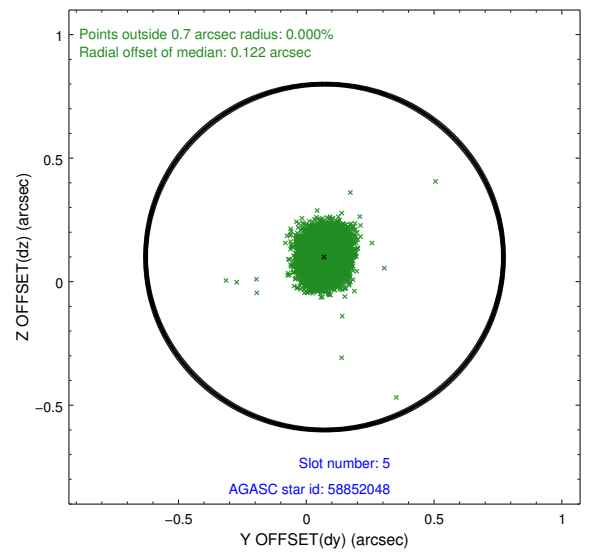
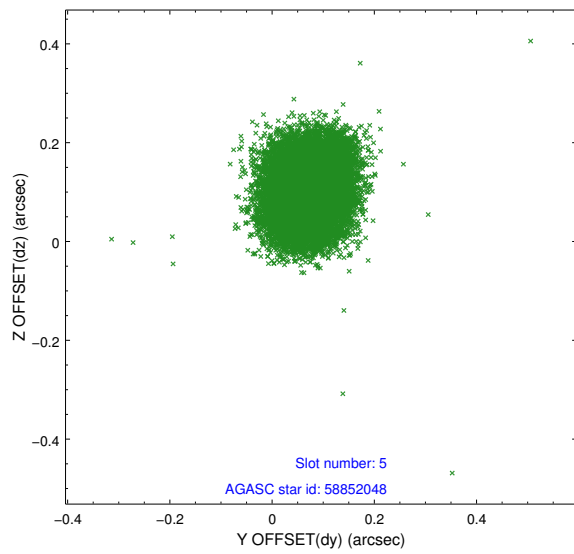
2.4.1 Slot 3



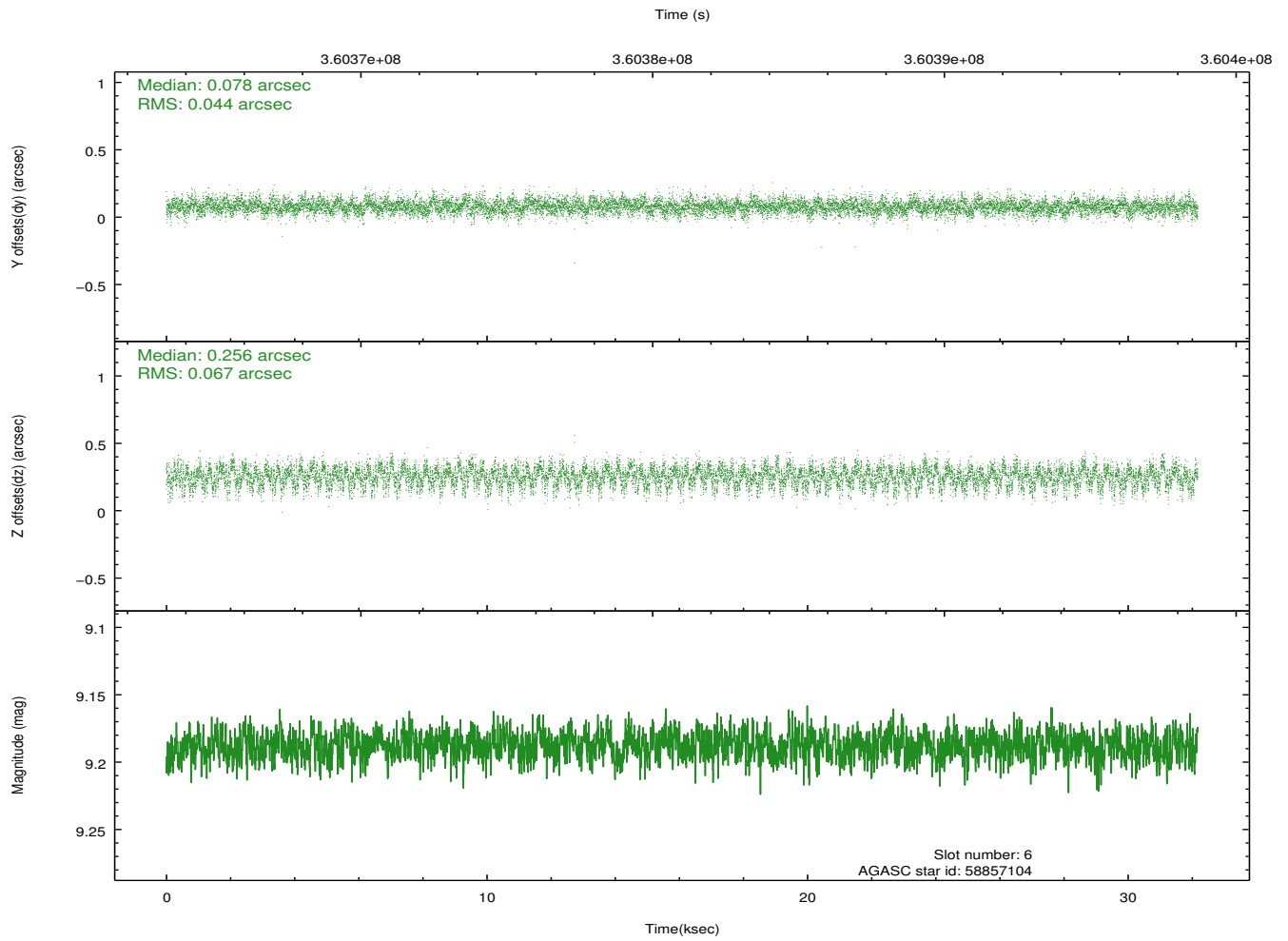
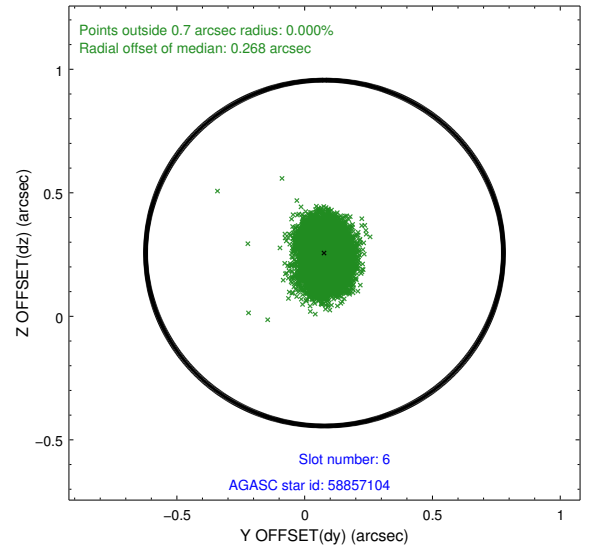
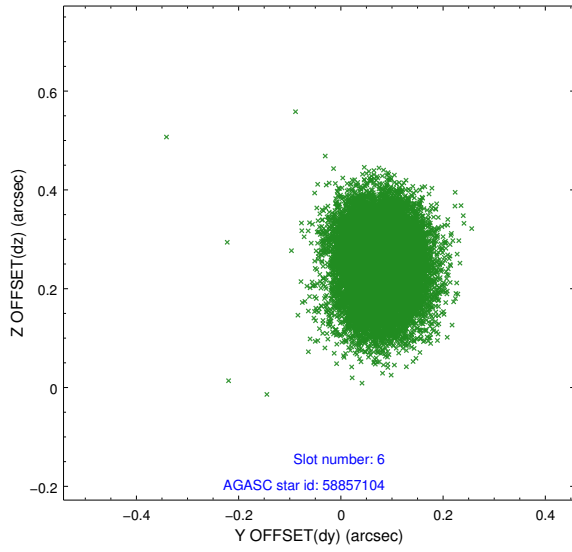
2.4.2 Slot 4



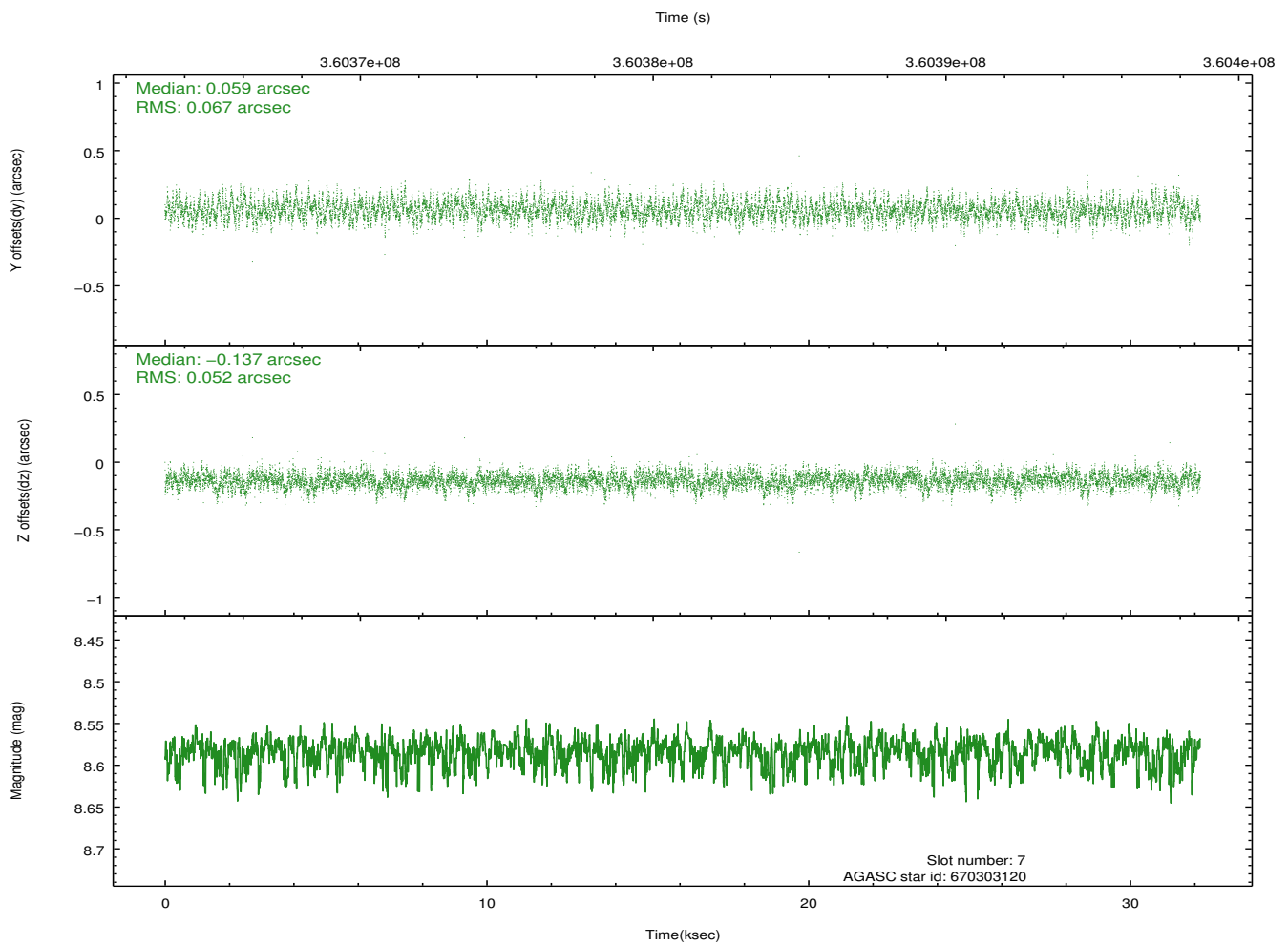
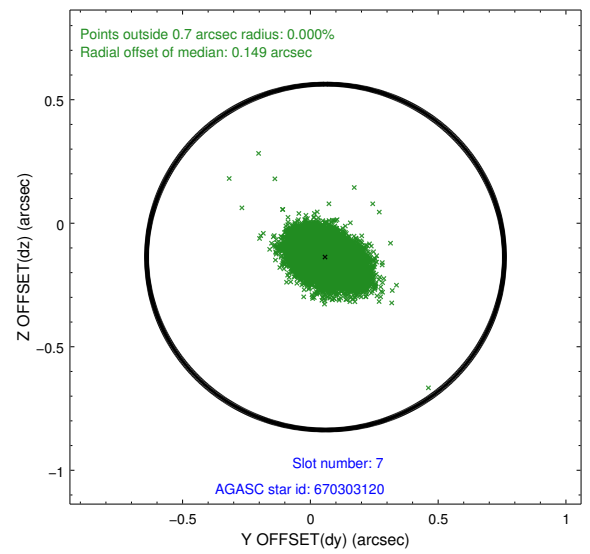
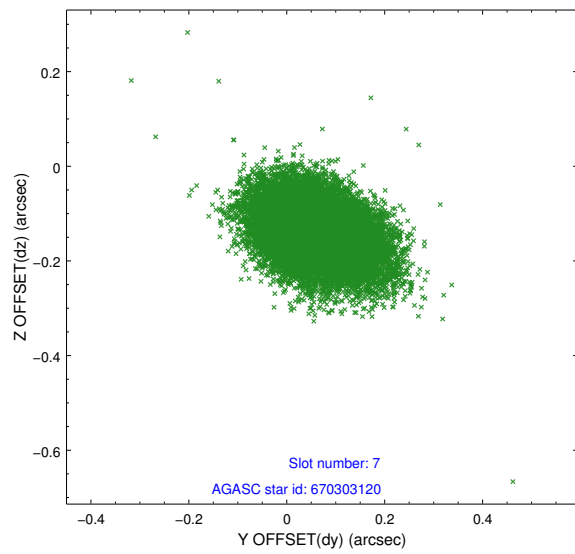
2.4.3 Slot 5



2.4.4 Slot 6

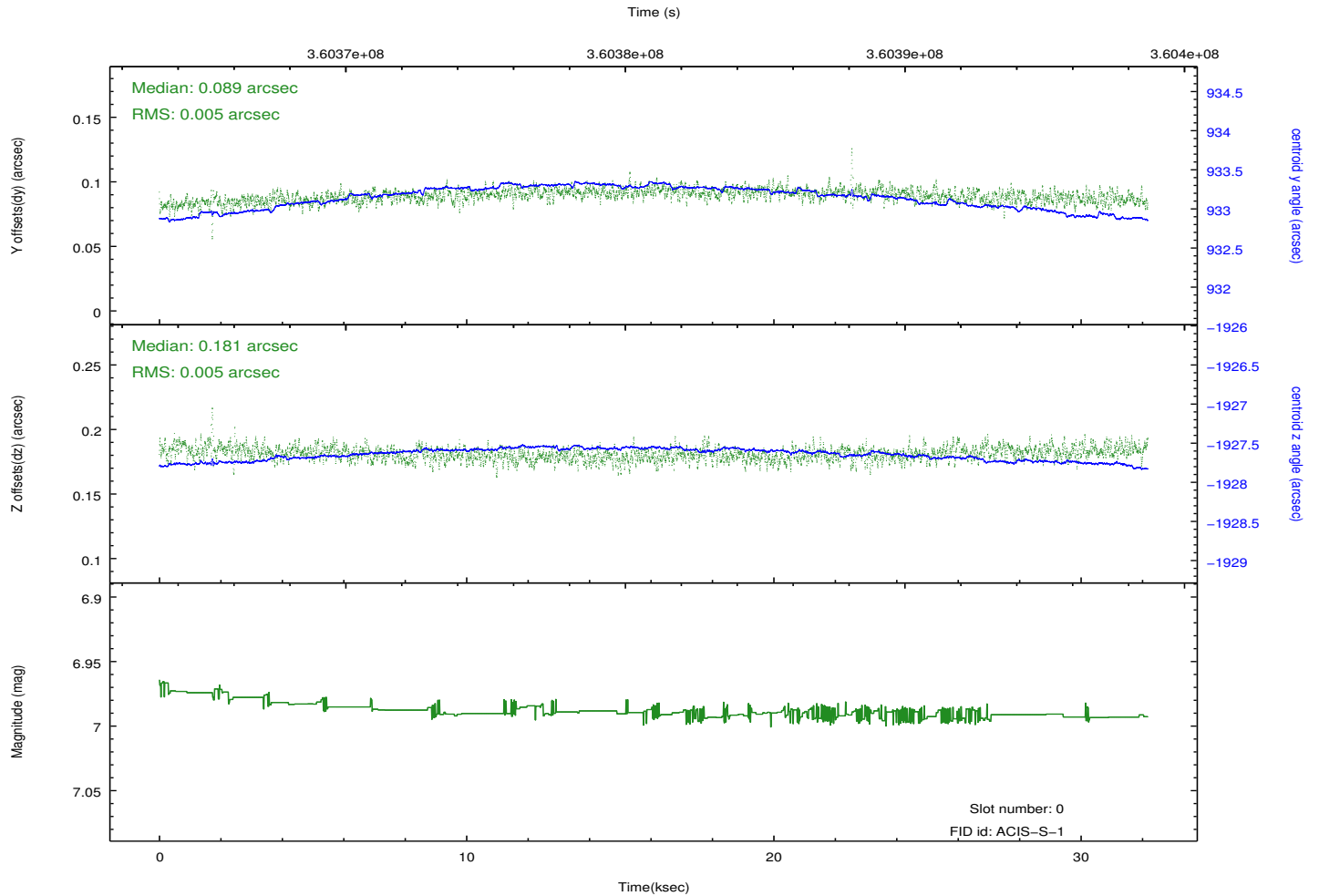
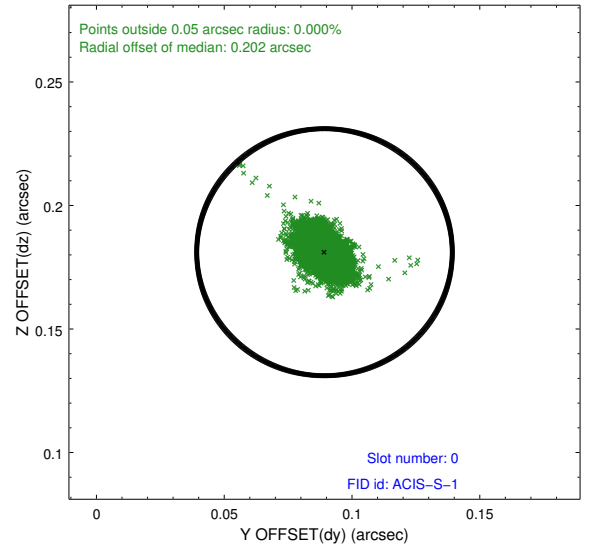
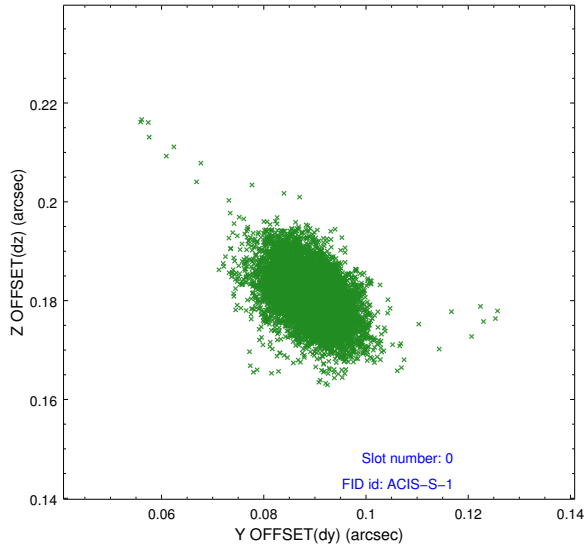


2.4.5 Slot 7

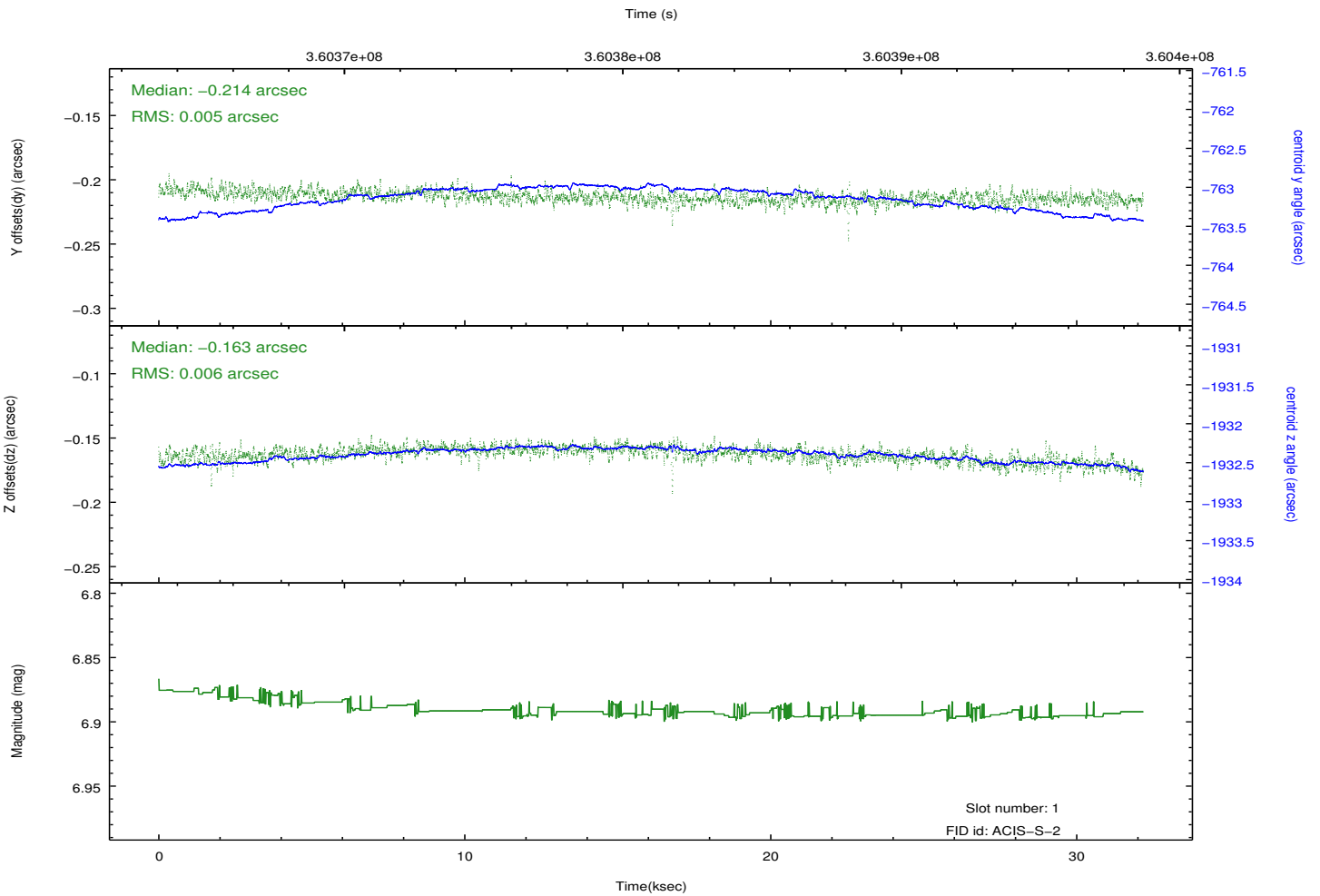
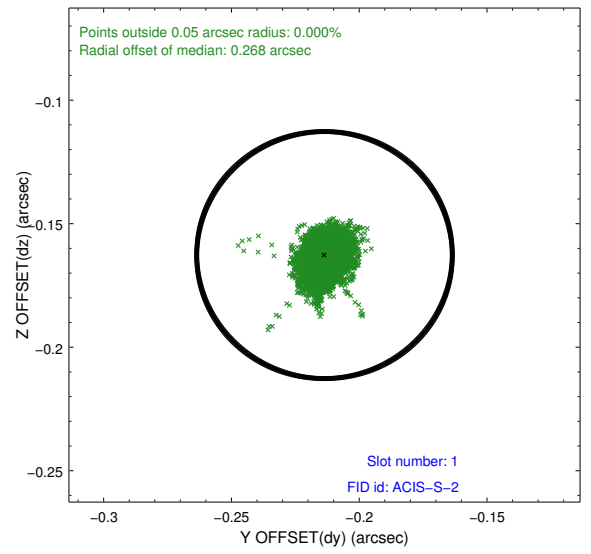
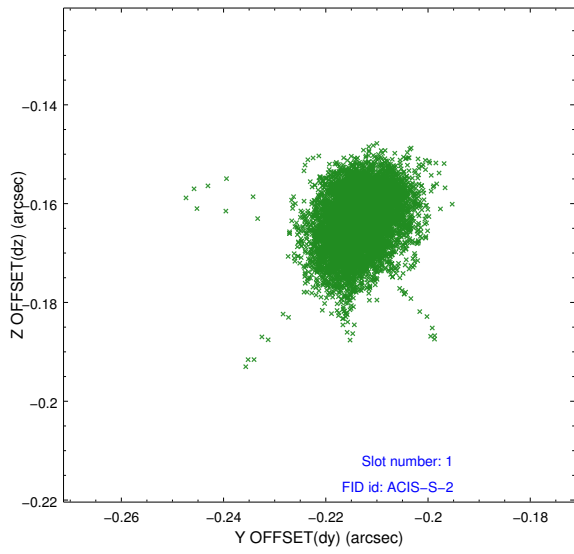


2.5 FID Slots

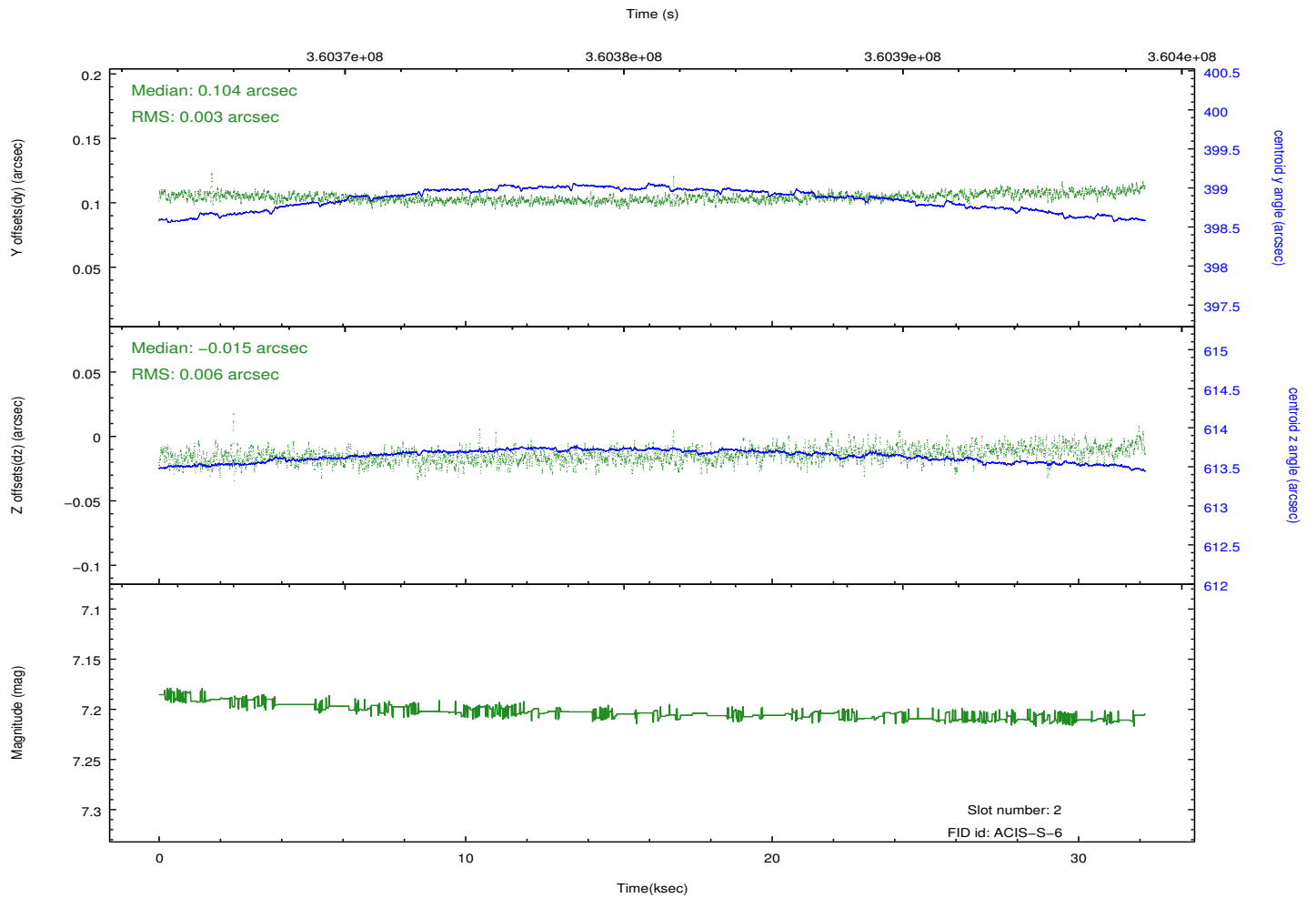
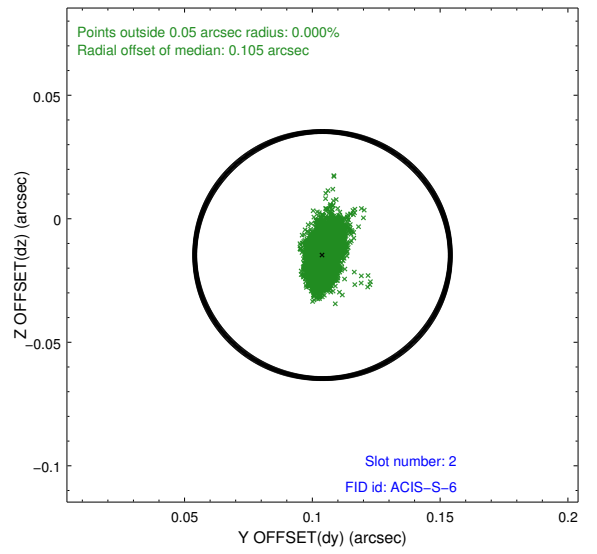
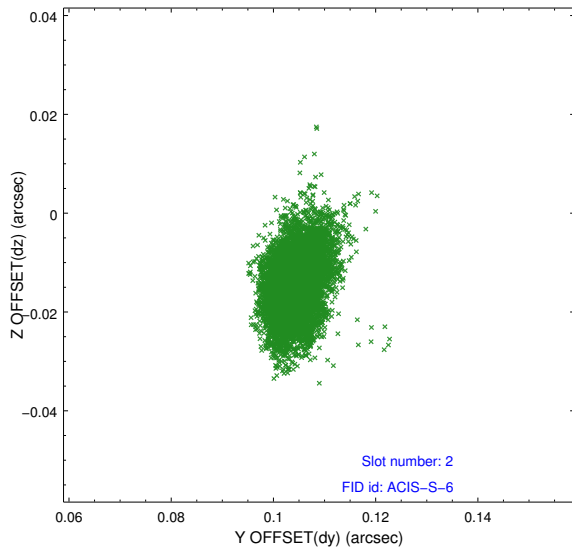
2.5.1 Slot 0



2.5.2 Slot 1



2.5.3 Slot 2



A Summary

A.1 Status

V&V Scientist	Joy Nichols
V&V Date (YYYY-MM-DD)	2012.06.13
V&V Edition	1
V&V Disposition and Status	OK
V&V Charge Time	32.176

A.2 Comments