

# V&V Reference Report

## L2 ASCDS Version : 8.4.4

Observation 10188 - L2 Version 2  
Chandra X-Ray Center

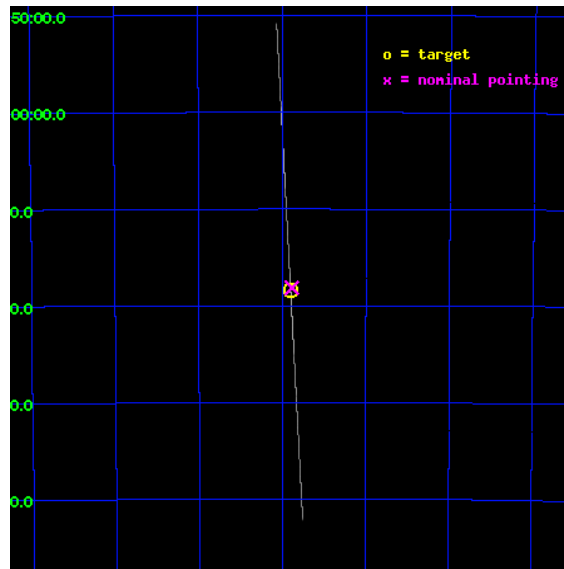
L2 Processing Date : Jun 1 2012

## Contents

<b>1</b>	<b>Front</b>	<b>2</b>
<b>2</b>	<b>OBI</b>	<b>3</b>
2.1	OBI . . . . .	3
2.1.1	Images . . . . .	3
2.1.2	Bias . . . . .	3
2.1.3	Parameters . . . . .	4
2.1.4	Events . . . . .	4
2.2	Compared Parameters . . . . .	5
2.3	Aspect . . . . .	6
2.4	Star Slots . . . . .	9
2.4.1	Slot 3 . . . . .	9
2.4.2	Slot 4 . . . . .	10
2.4.3	Slot 5 . . . . .	11
2.4.4	Slot 6 . . . . .	12
2.4.5	Slot 7 . . . . .	13
2.5	FID Slots . . . . .	14
2.5.1	Slot 0 . . . . .	14
2.5.2	Slot 1 . . . . .	15
2.5.3	Slot 2 . . . . .	16
<b>A</b>	<b>Summary</b>	<b>17</b>
A.1	Status . . . . .	17
A.2	Comments . . . . .	17

# 1 Front

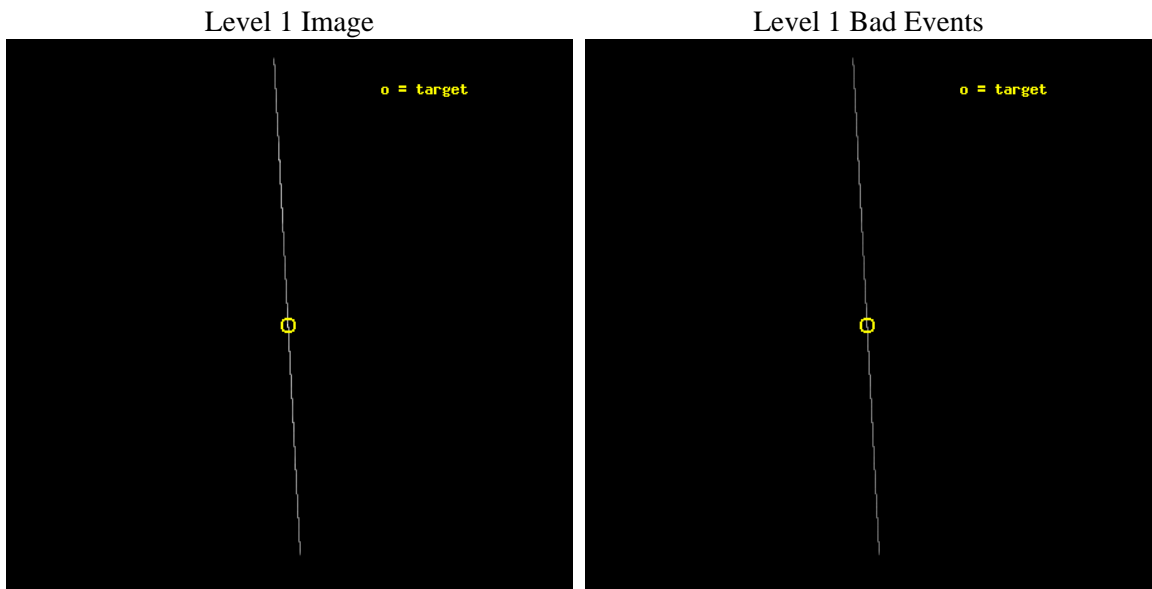
seq_num	501115	Sequence number
obs_id	10188	Observation id
title	Prompt Study of Burst-Selected Outbursts from AXPs	Proposal title
observer	Dr. Gianluca Israel	Principal investigator
object	1E1547.0-5408	Source name
ra_targ	237.725417	Observer's specified target RA [deg]
dec_targ	-54.306611	Observer's specified target Dec [deg]
ra_nom	237.72146819545	Nominal RA [deg]
dec_nom	-54.30240496855	Nominal Dec [deg]
roll_nom	86.916733643529	Nominal Roll [deg]
revision	2	Processing version of data
ontime	14382.75	Sum of GTIs [s]
livetime	14326.567382812	Livetime [s]
ontime4	14382.75	Sum of GTIs [s]
ontime5	14382.75	Sum of GTIs [s]
ontime6	14382.75	Sum of GTIs [s]
ontime7	14382.75	Sum of GTIs [s]
ontime8	14382.75	Sum of GTIs [s]
ontime9	14382.75	Sum of GTIs [s]
l2events	317972	Number of level 2 events



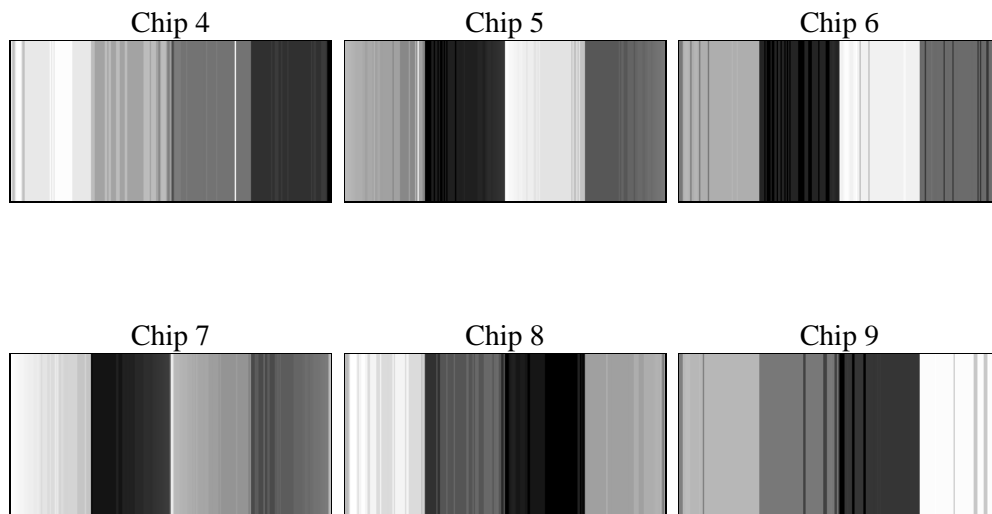
## 2 OBI

### 2.1 OBI

#### 2.1.1 Images



#### 2.1.2 Bias



### 2.1.3 Parameters

obi_num	0	Obi number	sched_exp_time	14200.000000	[s] Scheduled observation exposure time
ascdsver	8.4.4	Processing system revision	ontime	14382.75	Sum of GTIs [s]
caldbver	4.4.9	&#160	ontime4	14382.75	Sum of GTIs [s]
date	2012-06-01T06:50:39	Date and time of file creation	ontime5	14382.75	Sum of GTIs [s]
revision	2	Processing version of data	ontime6	14382.75	Sum of GTIs [s]
			ontime7	14382.75	Sum of GTIs [s]
			ontime8	14382.75	Sum of GTIs [s]
			ontime9	14382.75	Sum of GTIs [s]
			l1events	471815	Number of level 1 events

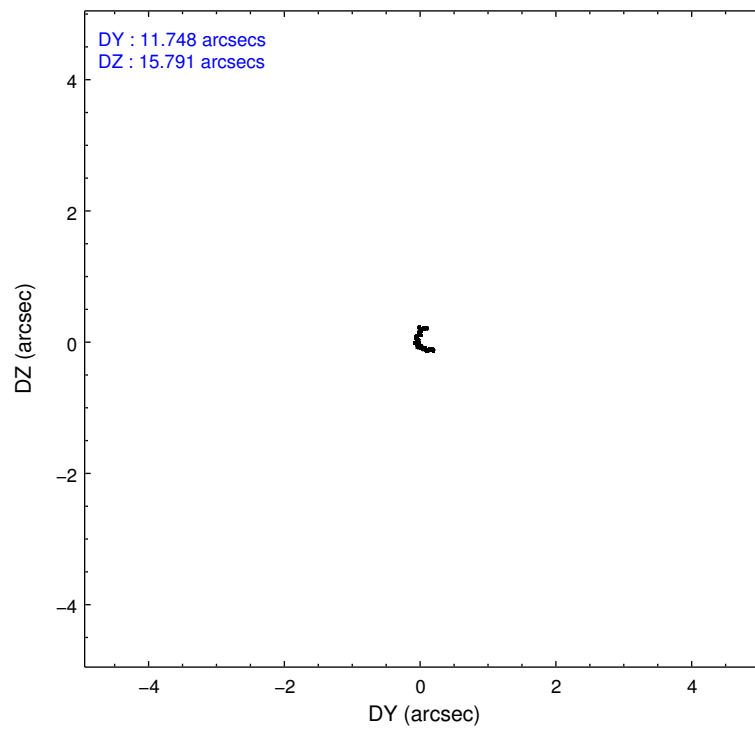
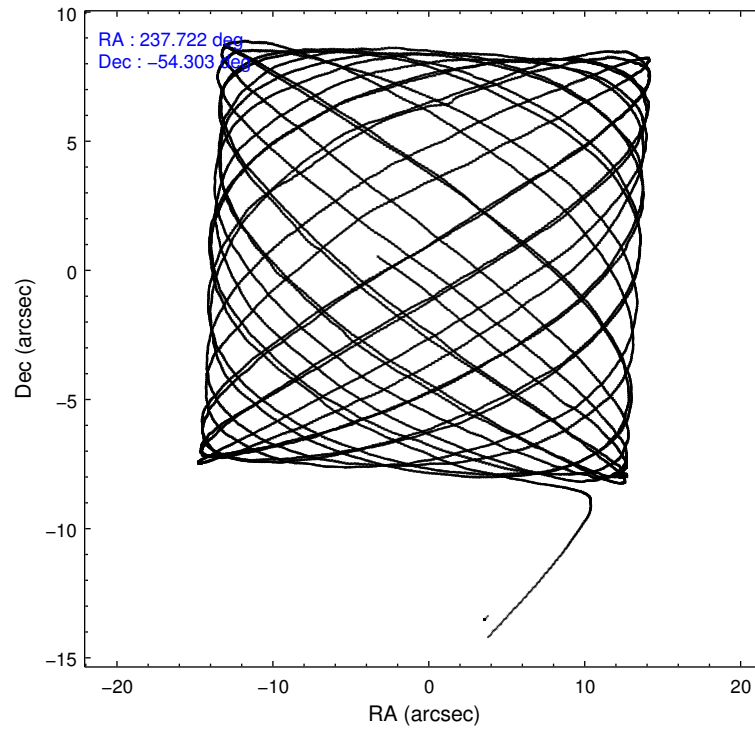
### 2.1.4 Events

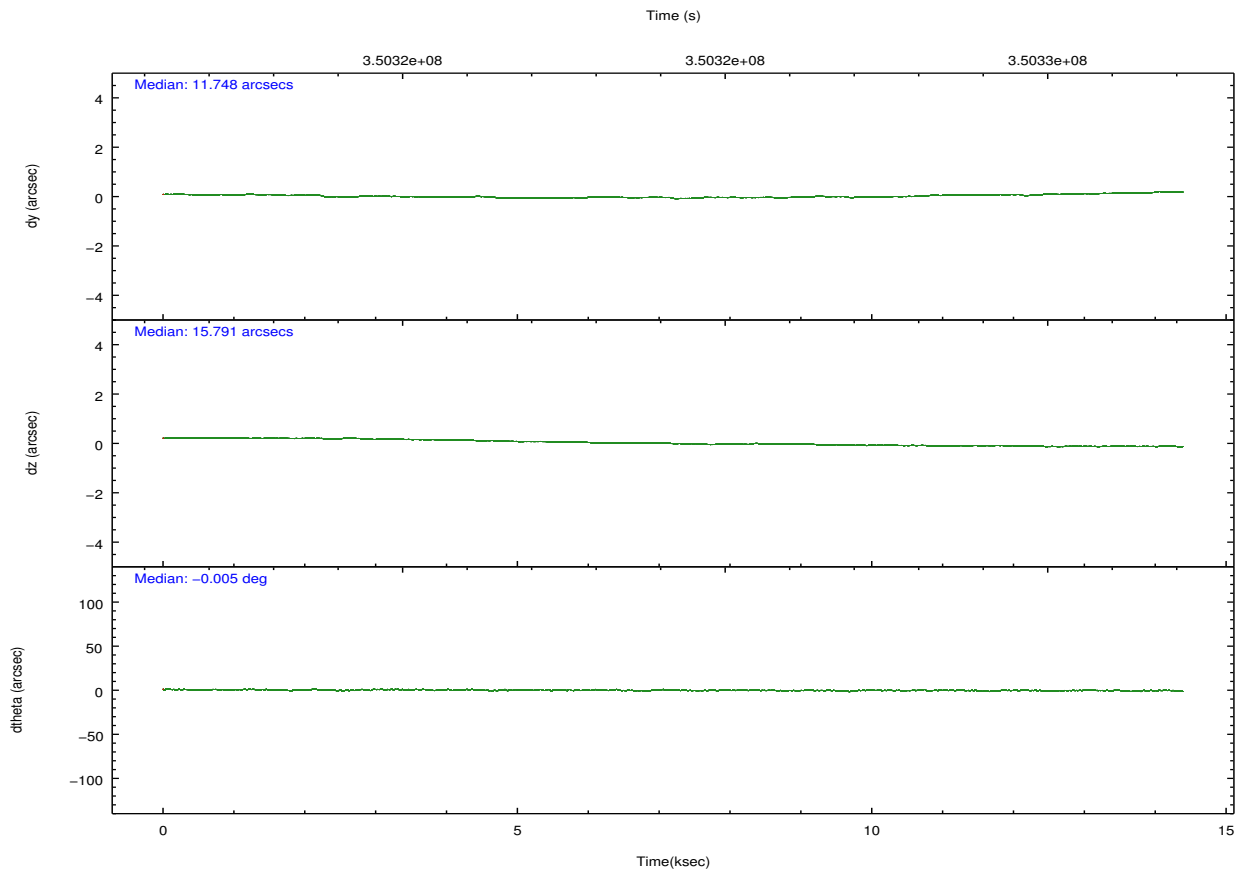
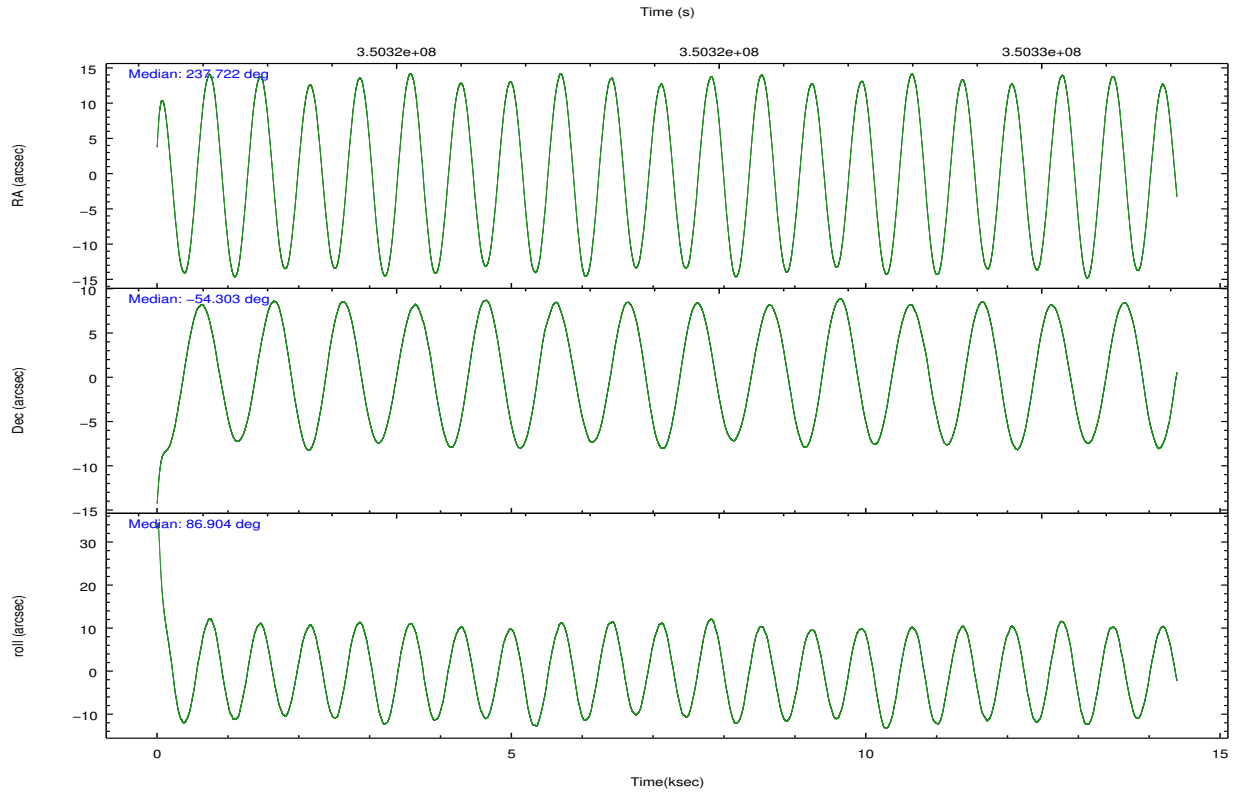
	ccd 4	ccd 5	ccd 6	ccd 7	ccd 8	ccd 9		ccd 4	ccd 5	ccd 6	ccd 7	ccd 8	ccd 9
level 1 events	34164	145452	35174	147940	73423	35662	grade 0 events	4012	22672	3418	15427	13276	3810
rejected events	7445	19723	8174	21189	12855	8908		11%	15%	9%	10%	18%	10%
rejected %	21%	13%	23%	14%	17%	24%	grade 1 events	163	298	124	299	255	169
								0%	0%	0%	0%	0%	0%
							grade 2 events	11063	39290	11310	34955	19543	10706
								32%	27%	32%	23%	26%	30%
							grade 3 events	3535	2711	3418	10005	7076	3062
								10%	1%	9%	6%	9%	8%
							grade 4 events	3587	2544	3162	9900	6934	3310
								10%	1%	8%	6%	9%	9%
							grade 5 events	6121	13852	6917	16817	9783	7521
								17%	9%	19%	11%	13%	21%
							grade 6 events	5683	64085	6825	60537	16556	7084
								16%	44%	19%	40%	22%	19%
							grade 7 events	0	0	0	0	0	0
								0%	0%	0%	0%	0%	0%

## 2.2 Compared Parameters

Parameter	Planned	Actual	Parameter	Planned	Actual
Instrument	ACIS	ACIS	Obspar format version number	7	7
Detector	ACIS-456789	ACIS-456789	Obspar file type	PREDICTED	ACTUAL
Grating	NONE	NONE	Obspar update status	NONE	UPDATED
Data mode	CC33_FAINT	CC33_FAINT	CCD I0 on	N	N
Observation mode	POINTING	POINTING	CCD I1 on	N	N
[deg] Pointing RA	237.743231	237.7214681954452	CCD I2 on	N	N
[deg] Pointing Dec	-54.326564	-54.30240496855001	CCD I3 on	N	N
[deg] Pointing Roll	86.777766	86.91673364352938	CCD S0 on	O1	Y
[mm] SIM focus pos	-0.684267	-0.6828225247311905	CCD S1 on	Y	Y
[mm] SIM defocus	0	0.001444936568705701	CCD S2 on	Y	Y
[mm] SIM translation stage pos	-190.132523	-190.1425803651734	CCD S3 on	Y	Y
[mm] SIM translation stage offset	0	0.01005778216563158	CCD S4 on	Y	Y
[s] Observation start time (MET)	350317182.184000	350316331.87917	CCD S5 on	Y	Y
Observation start date	2009-02-06T14:18:36	2009-02-06T14:05:31	Number of optional ACIS chips dropped	0	0
[s] Observation end time (MET)	350331382.184000	350331892.40494	On-chip summing requested	N	N
Observation end date	2009-02-06T18:15:16	2009-02-06T18:24:52	Subarray requested	NONE	NONE
Read mode	CONTINUOUS	CONTINUOUS	Alternating exposures requested	N	N
			[s] Primary exposure time	0.000000	0

## 2.3 Aspect



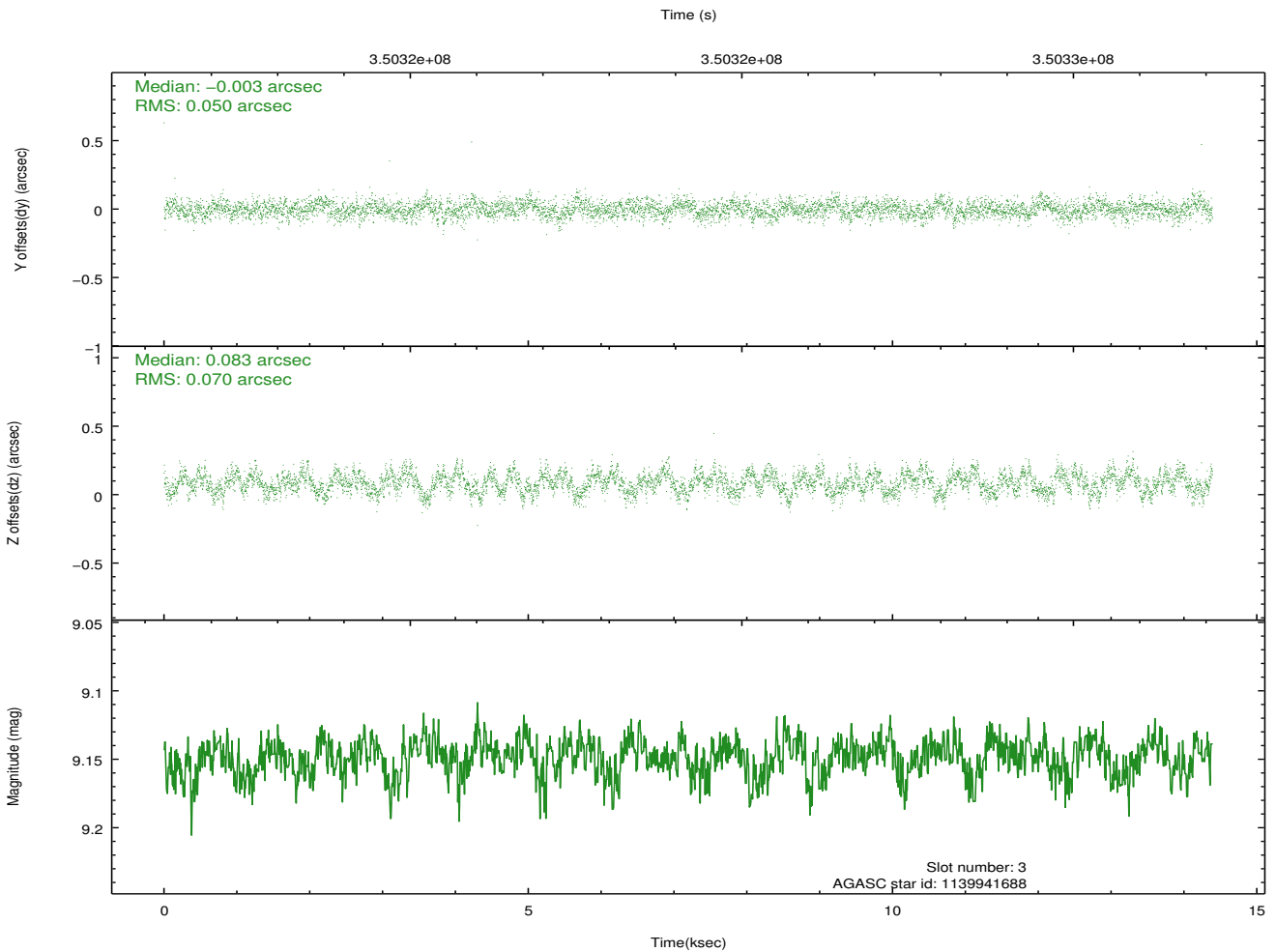
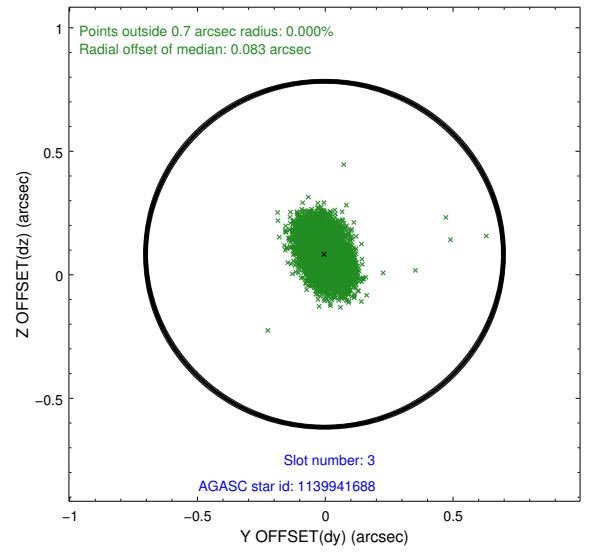
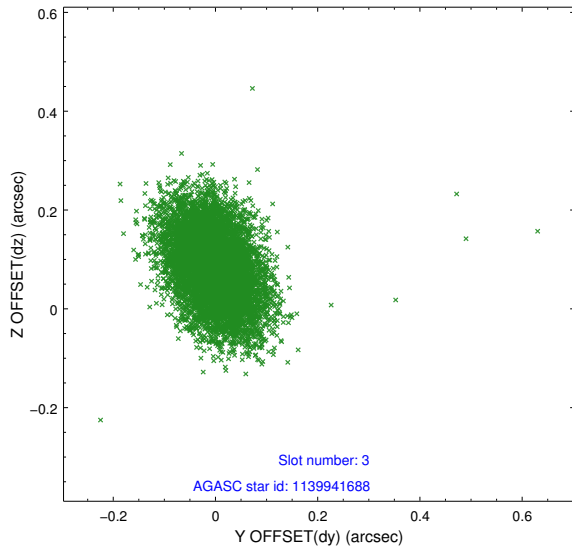


### Slot Statistics

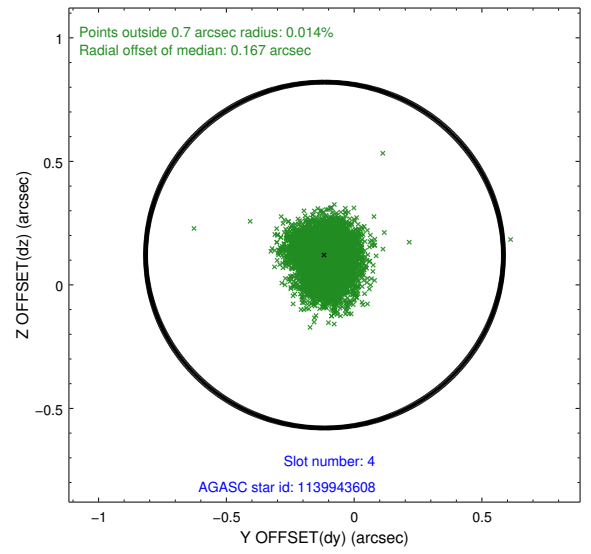
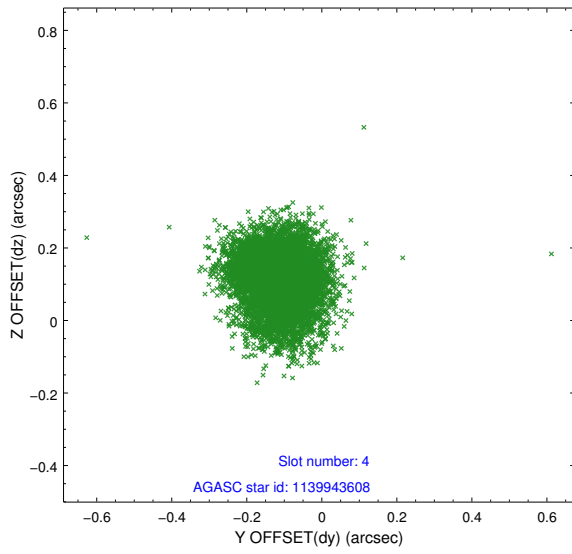
slot	status	id	mag	n_pts	med_dy	med_dz	dr1	dr2	ra	dec	mean_y	mean_z
0	FID	ACIS-S-2	6.88	3510	-0.046	-0.017	0.009	0.016	0.000000	0.000000	-764.67	-1737.20
1	FID	ACIS-S-4	6.97	3510	0.134	0.027	0.007	0.012	0.000000	0.000000	2148.61	171.03
2	FID	ACIS-S-5	7.00	3510	-0.120	-0.001	0.009	0.017	0.000000	0.000000	-1817.20	164.99
3	GUIDE	1139941688	9.15	7014	-0.003	0.083	0.090	0.149	238.371800	-54.158507	672.73	-1288.63
4	GUIDE	1139943608	9.21	7016	-0.116	0.121	0.102	0.168	238.761095	-54.002426	1271.51	-2085.10
5	GUIDE	1139945912	9.13	7012	-0.053	0.066	0.085	0.136	238.361289	-54.201826	516.63	-1274.37
6	GUIDE	1140334088	9.13	7009	0.130	-0.208	0.107	0.168	236.618620	-54.783934	-1794.04	2236.90
7	GUIDE	1140458608	8.43	7016	0.033	-0.057	0.068	0.110	237.337107	-54.507511	-700.55	811.09

## 2.4 Star Slots

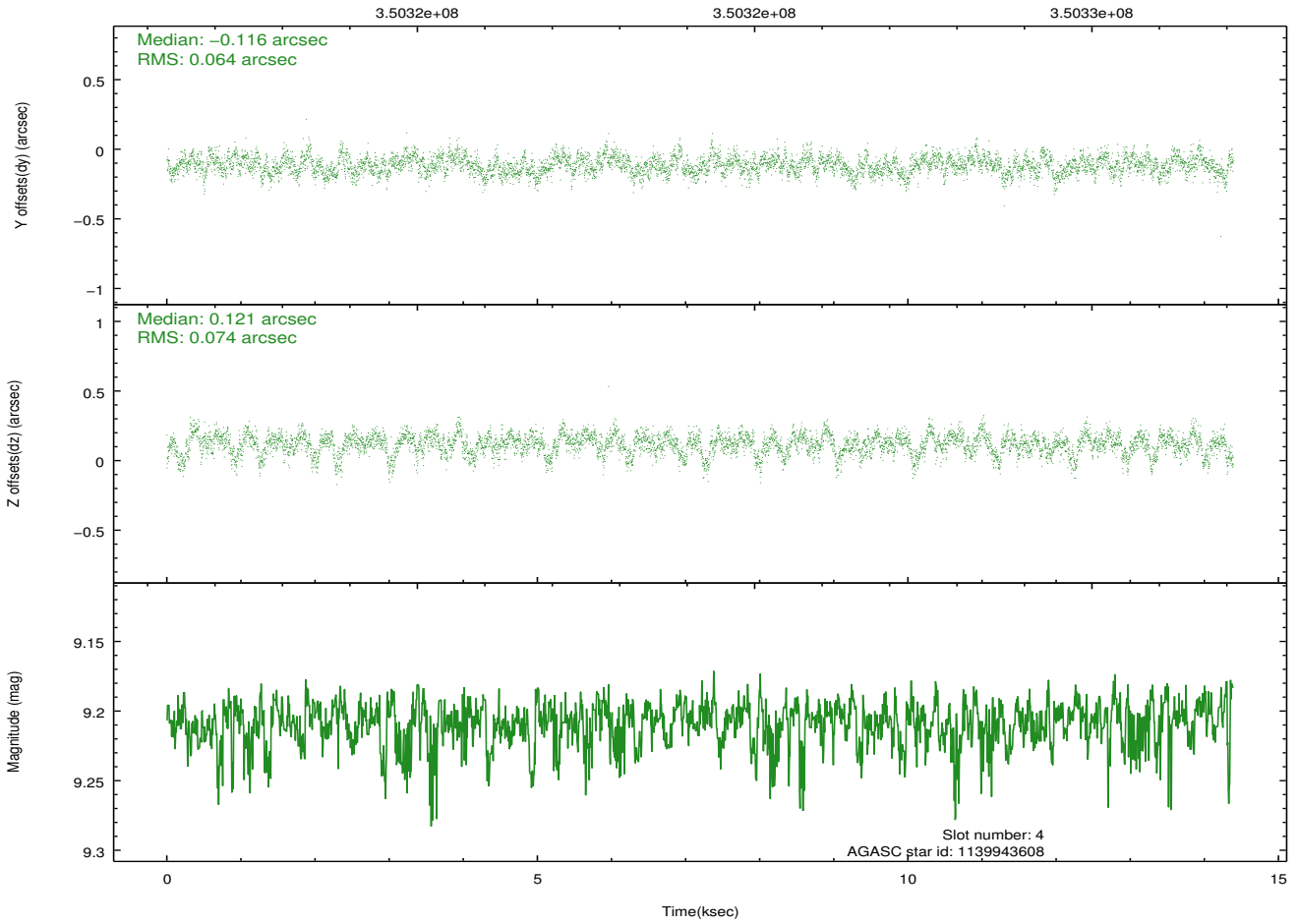
### 2.4.1 Slot 3



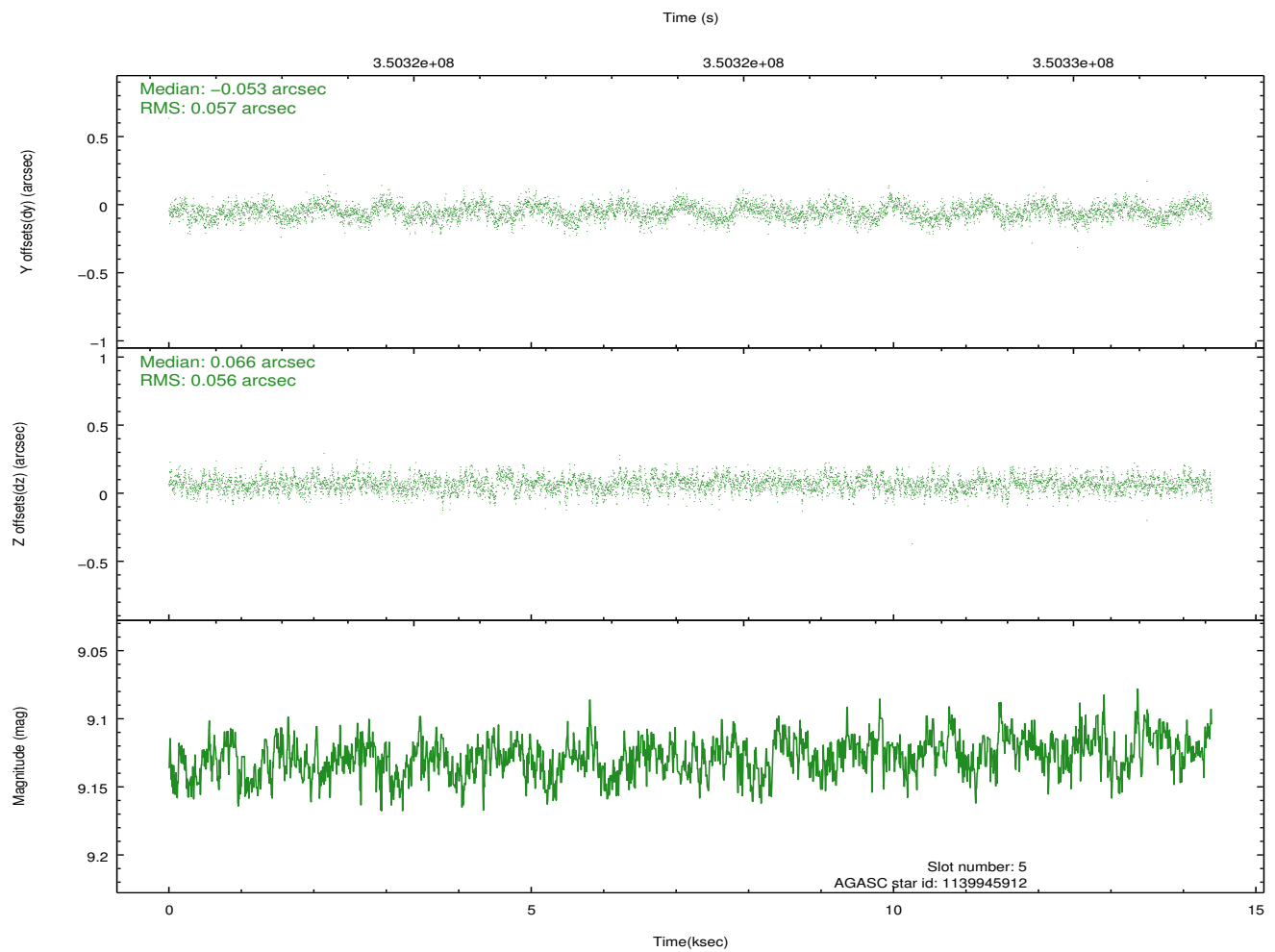
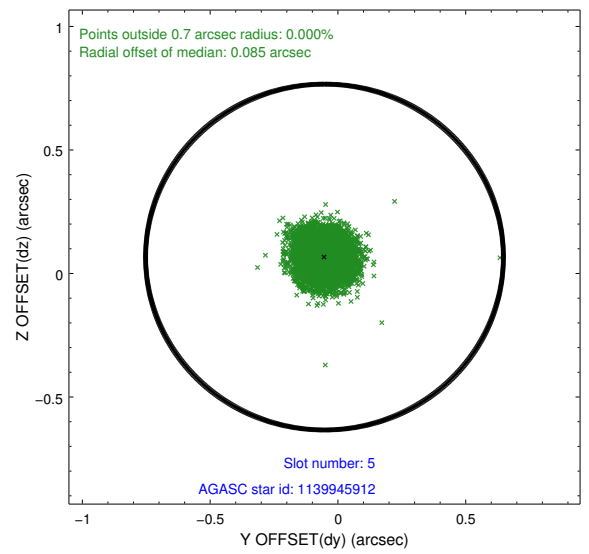
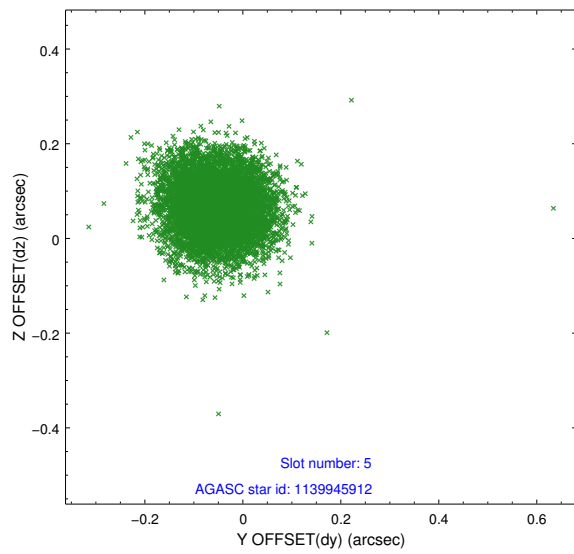
## 2.4.2 Slot 4



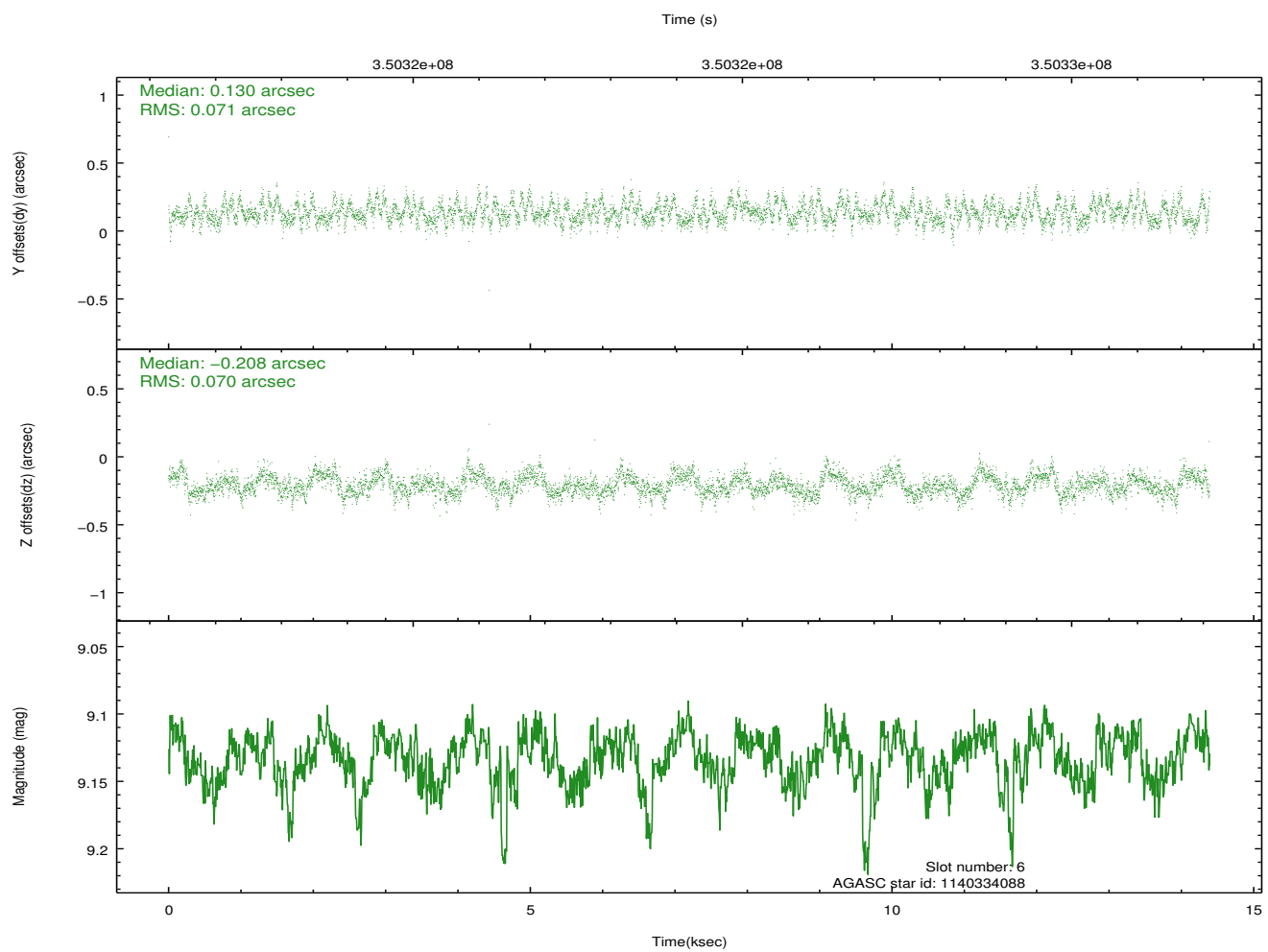
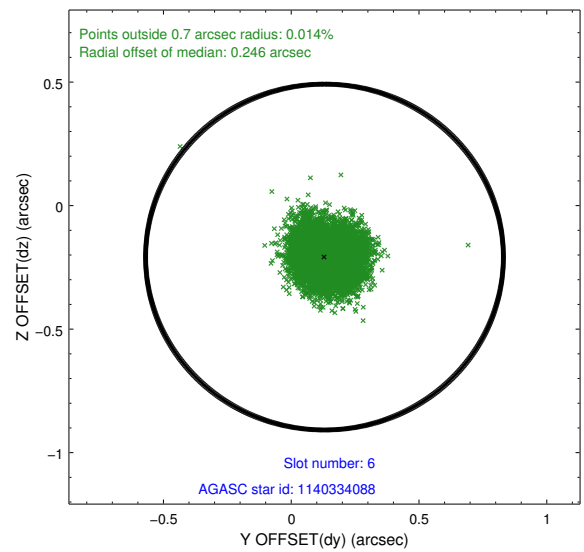
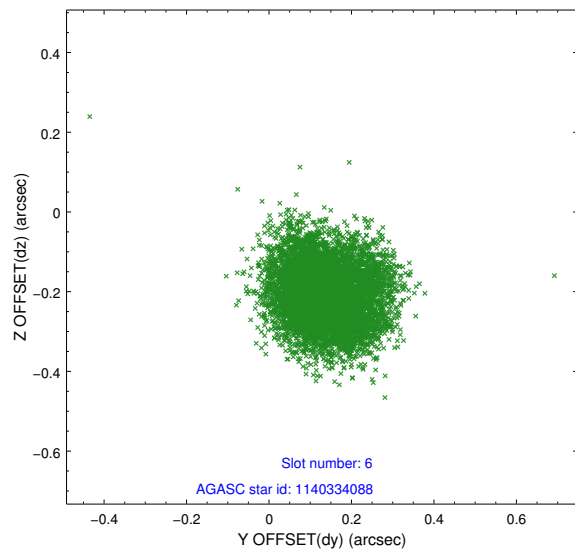
Time (s)



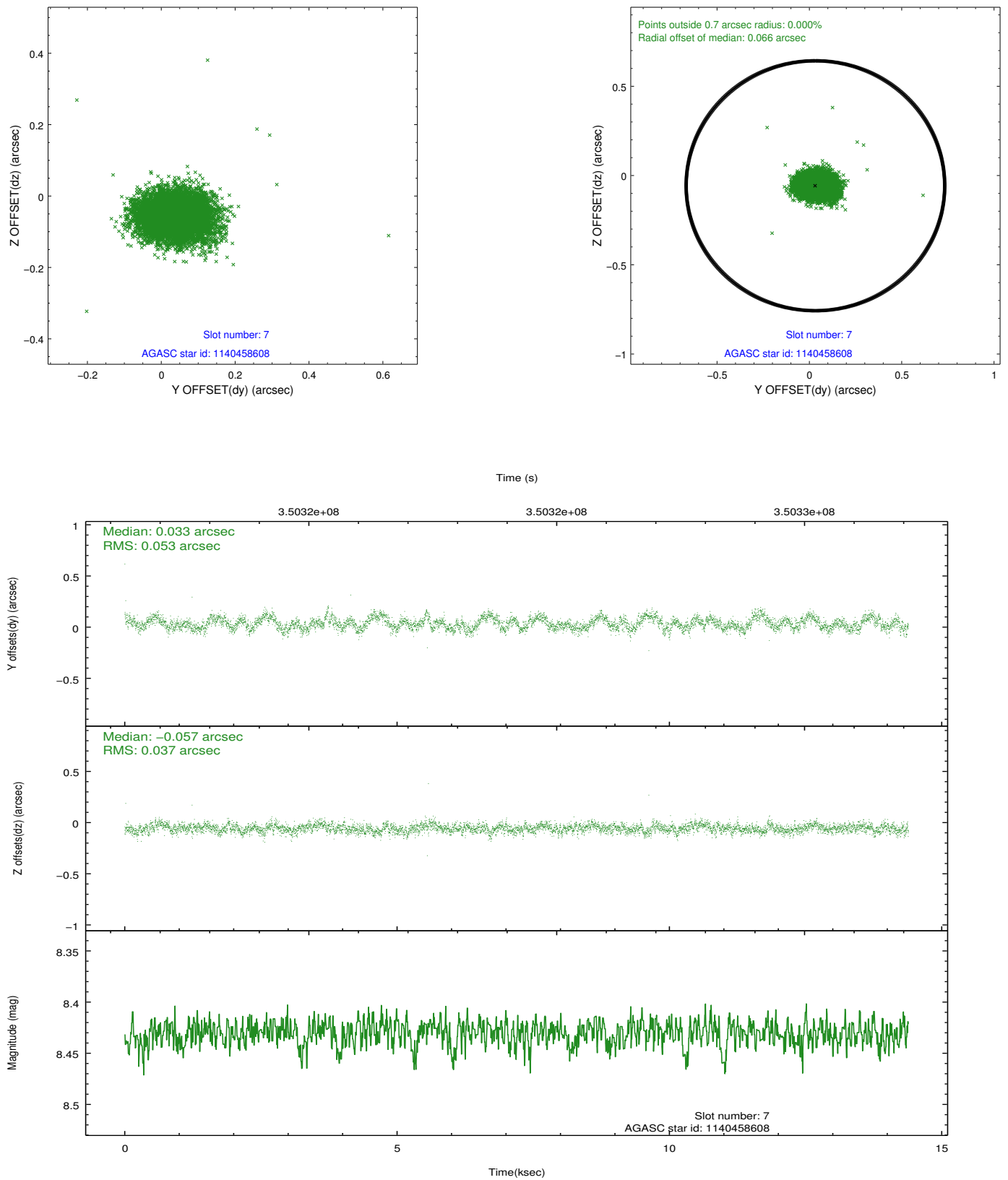
### 2.4.3 Slot 5



## 2.4.4 Slot 6

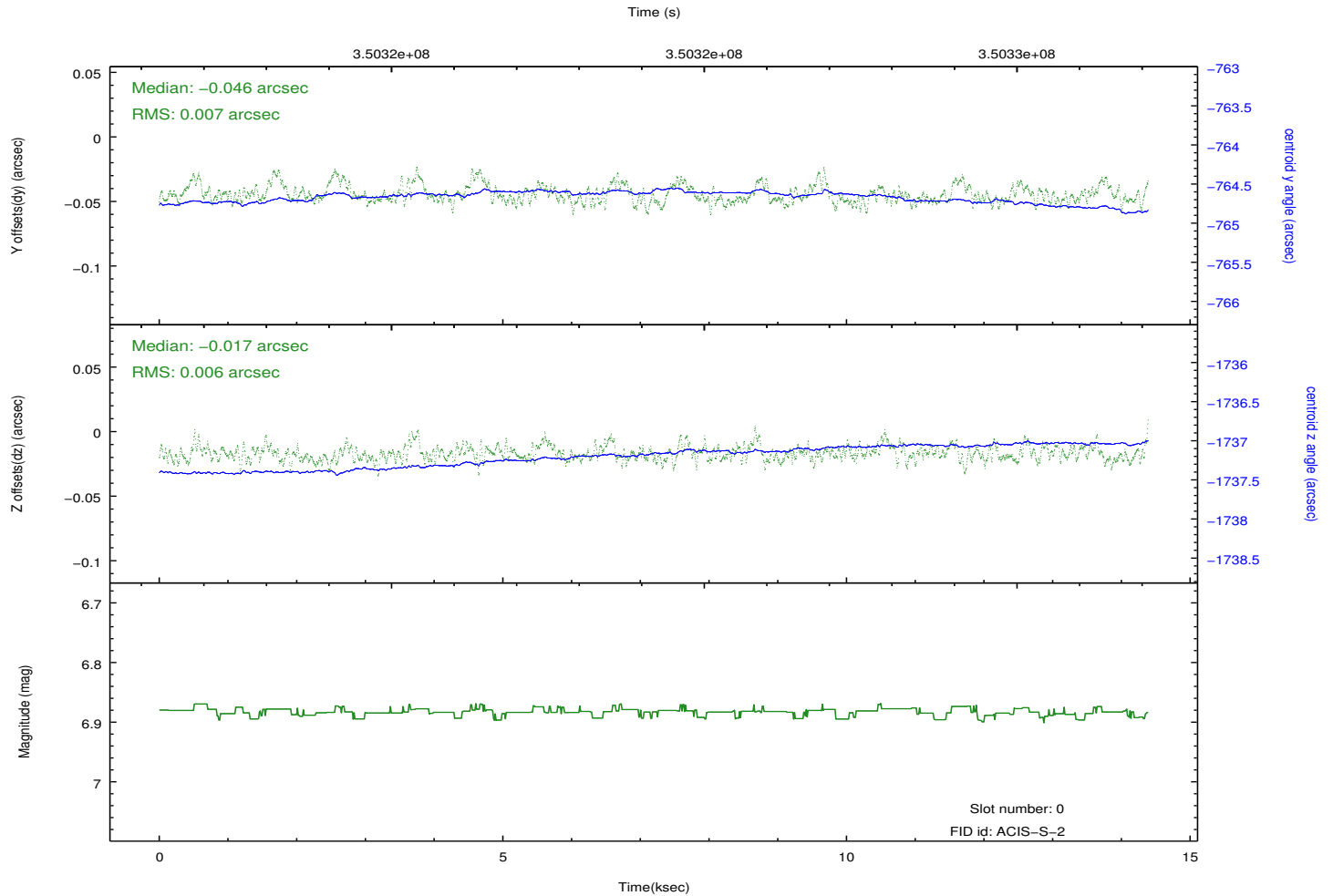
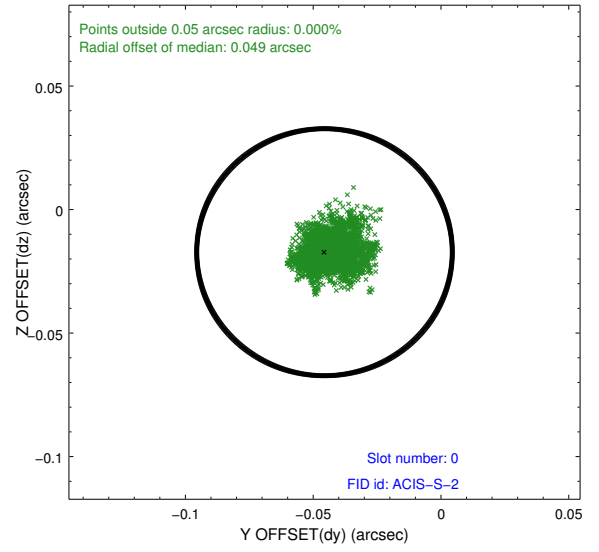
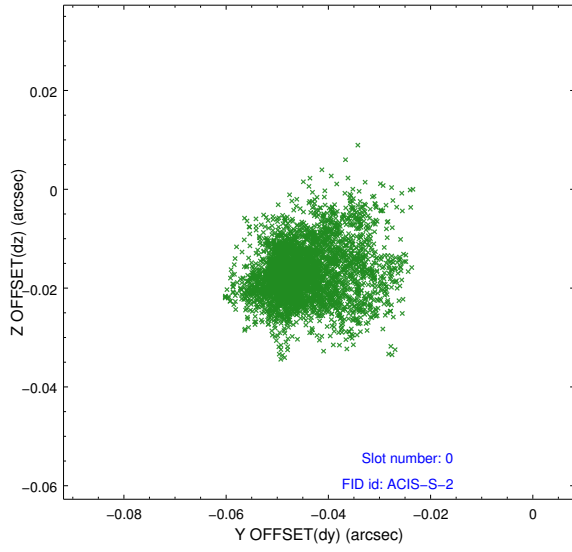


## 2.4.5 Slot 7

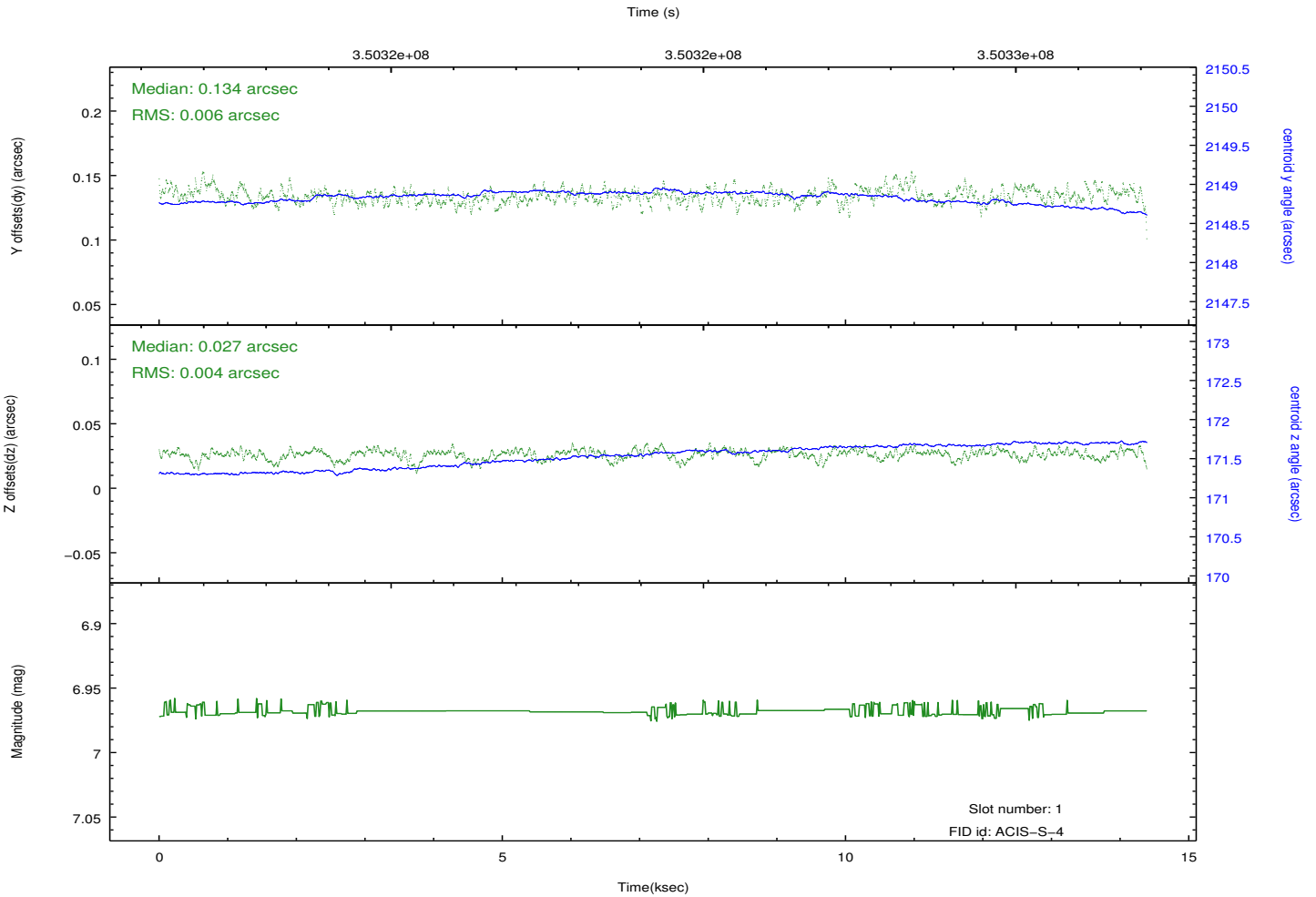
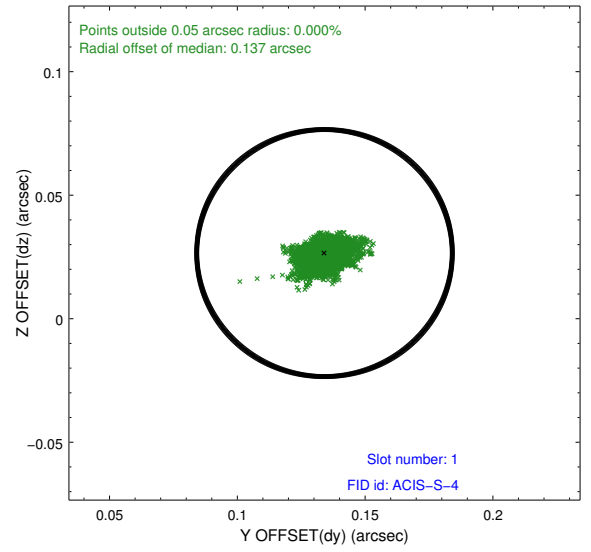
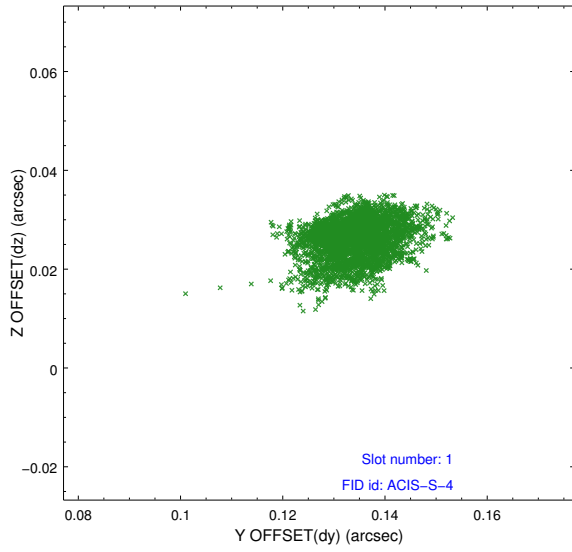


## 2.5 FID Slots

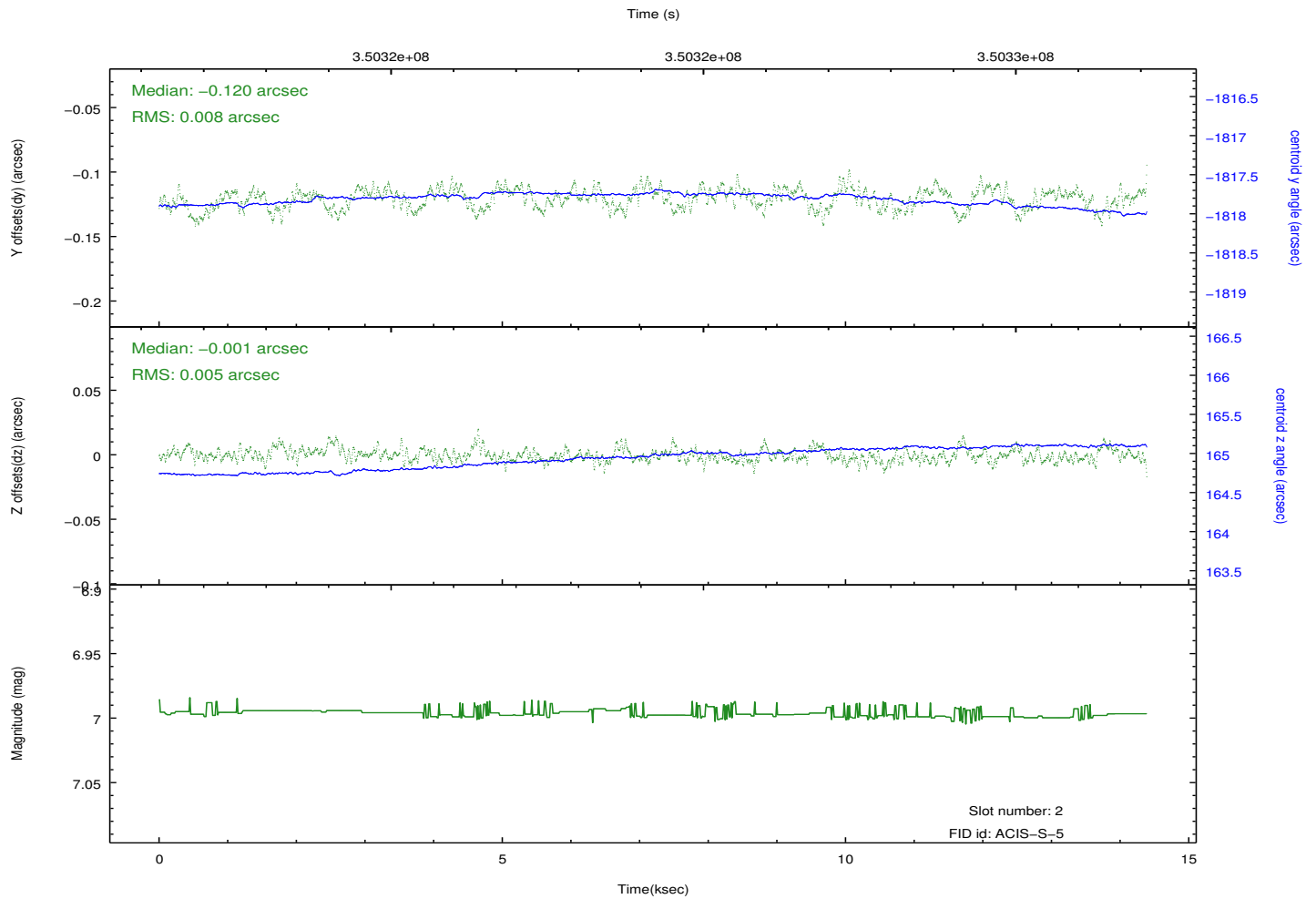
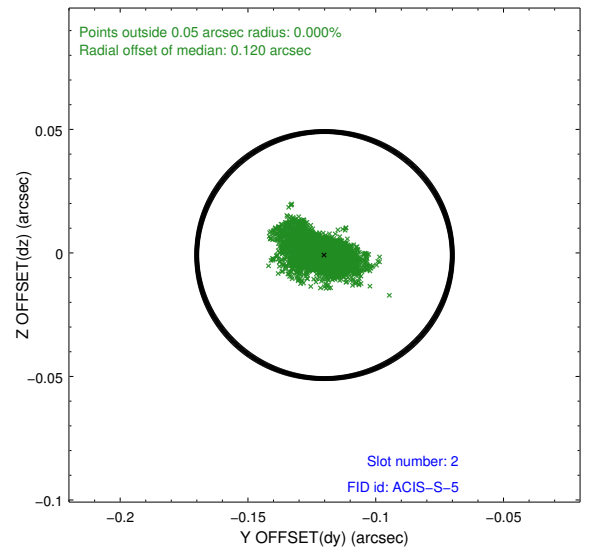
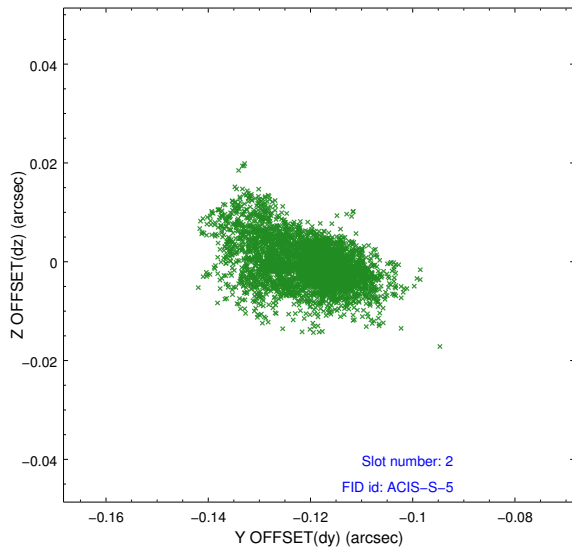
### 2.5.1 Slot 0



## 2.5.2 Slot 1



### 2.5.3 Slot 2



# A Summary

## A.1 Status

V&V Scientist	Joy Nichols
V&V Date (YYYY-MM-DD)	2012.06.01
V&V Edition	1
V&V Disposition and Status	OK
V&V Charge Time	14.38275

## A.2 Comments